

NOTE: KD-4033 is modified from KD-3033.

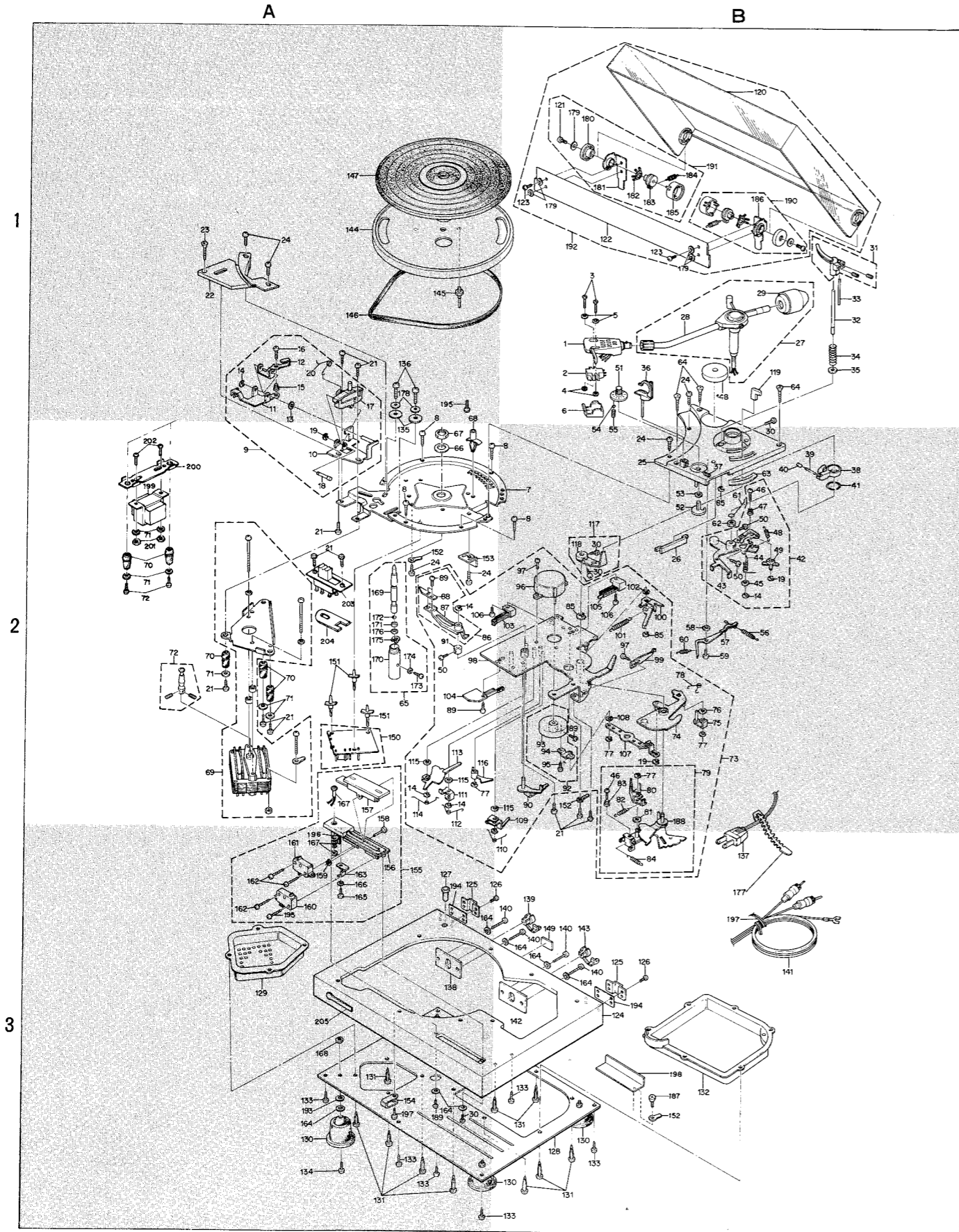


Fig. No.	Parts No.	Description	Re- marks	Fig. No.	Parts No.	Description	Re- marks
1	J92-0017-09	Shell (Black)	1B	66	N19-0142-04	Washer (12.4φ x 20φ x 1t)	2A
2	T21-0046-05	Cartridge	1B	67	N14-0048-14	Nut (12φ P = 0.5)	2A
3	N09-0196-08	Mounting screw (2.6 x 10.5)	1B	68	K29-0229-05	Detecting adjust knob	1A
4	N14-0102-08	Mounting nut	1B	69	T41-0093-15	Motor ass'y	2A
5	N19-0227-08	Nylon washer (2.7φ x 4.7φ x 0.5t)	1B	70	G13-0069-04	Rubber cushion	2A
6	F07-0293-09	Stylus cover	1B	71	N19-0186-14	Washer (3.3φ x 12φ x 1t)	2A
7	A10-0447-12	Main chassis	2B	72	D15-0123-04	Motor pulley (50Hz) D15-0126-04 (60Hz)	2A
8	N61-3813-45	Wood screw (3.8φ x 13)	1A,2A,2B	73	D40-0196-12	Auto mechanism ass'y	2B
9	D40-0154-33	Speed change ass'y	2A	74	D12-0051-24	EL cam calked ass'y	2B
10	A11-0051-24	Speed change chassis calked ass'y	2A	75	D11-0112-04	Travelling arm calked ass'y	2B
11	D11-0169-14	Belt guide arm (A)	1A	76	N19-0153-04	Washer (6φ x 3.5φ x 0.5t)	2B
12	D11-0170-04	Belt guide arm (B)	1A	77	N24-3025-60	E washer (2.5φ)	2A, 2B
13	N19-0025-04	Washer (6.5φ x 4.1φ x 0.5t)	1A	78	G01-0133-04	Torsion spring (A)	2B
14	N24-3030-60	E washer (3φ)	1A,2A,2B	79	D40-0198-04	Select arm ass'y	2B
15	G01-0154-04	Head spring	1A	80	D32-0038-04	Stopper calked ass'y	2B
16	N30-3010-11	Small pan head screw (3 x 10)	1A	81	N19-0157-04	Washer (12φ x 3.6φ x 0.6t)	2B
17	D12-0067-24	Speed selector cam	1A	82	G01-0134-04	Tension spring (D)	2B
18	D21-0303-04	Speed selector cam shaft	2A	83	G01-0135-04	Conical spring	2B
19	N24-3020-60	E washer (2φ)	1A,2B	84	G01-0141-04	Tension spring (B)	2B
20	G01-0217-14	Torsion spring	1A	85	N24-3040-60	E washer (6φ)	2B
21	N30-3006-46	Pan head screw (3 x 6)	3B	86	D40-0115-04	Detecting arm ass'y	2A
22	F07-0360-02	Speed selector cover	1A	87	D11-0116-04	Detecting arm calked ass'y	2A
23	N63-3520-45	Wood screw (3.5φ x 20)	1A	88	D29-0009-04	Tip	2A
24	N87-3008-45	Tap tight screw (3 x 8)	1A,1B,2A,2B	89	N30-2605-11	Small pan head screw (2.6 x 5)	2A,2B
25	A21-0214-21	Dress panel	2B	90	D11-0118-04	Detecting operation arm calked ass'y	2B
26	B08-0002-04	Indicator	2B	91	J31-0074-04	Sleeve	2A
27	J91-0071-05	Tonearm ass'y	1B	92	D40-0116-14	Switch cam ass'y	2B
28	J91-0072-05	Tonearm	1B	93	D12-0053-14	Switch cam	2B
29	D91-0038-19	Main weight	1B	94	J21-0869-04	Bracket calked ass'y	2B
30	N30-3008-41	Pan head screw (3 x 8)	1B,2B,3A	95	N87-2606-41	Tap tight screw	2B
31	D39-0196-04	Support ass'y	1B	96	T41-0091-25	Timing motor	2B
32	D21-0394-04	Elevation shaft	1B	97	N30-3005-11	Small pan head screw (3 x 5)	2B
33	D17-0035-04	Elevation sub rod	1B	98	A10-0286-53	Mechanism chassis calked ass'y	2A
34	G01-0281-04	Elevation spring	1B	99	G02-0031-14	Set spring	2B
35	N15-1040-46	Washer (4.5φ x 10φ x 0.8t)	1B	100	D11-0120-04	Set off arm	2B
36	D39-0012-34	Arm rest ass'y	1B	101	G01-0137-04	Tension spring (A)	2B
37	N73-2605-41	Mounting screw (2.6 x 5)	2B	102	N19-0020-04	Washer (8.0φ x 5.2φ x 0.5t)	2B
38	D12-0074-04	Pause cam	2B	103	S46-2010-15	Arm switch (A1)	2B
39	D17-0034-04	Pause lever	2B	104	S46-2006-75	Arm switch (C1)	2A
40	K29-0223-04	Pause knob	2B	105	S46-2011-05	Arm switch (D1)	2B
41	G09-0013-04	Pause ring	2B	106	N30-2605-11	Small pan head screw (2.6 x 5)	2A,2B
42	D11-0166-14	Position arm ass'y	2B	107	D11-0121-04	Connect bar	2B
43	D11-0167-04	Position arm calked ass'y	2B	108	N19-0153-04	Washer (6.0φ x 3.6φ x 0.5t)	2B
44	G02-0048-04	Cross cam spring	2B	109	D11-0122-04	Return operation arm	2B
45	N19-0082-00	Washer (4.5φ x 8φ x 1.5t)	2B	110	G01-0138-04	Torsion spring (D)	3B
46	N09-0094-04	Adjusting screw (3φ)	2B	111	D11-0123-04	Hook arm	2A
47	G01-0135-04	Conical spring	2B	112	G01-0139-14	Torsion spring (B)	2A
48	G01-0141-04	Tension spring (B)	2B	113	D11-0124-04	Switch arm	2A
49	D12-0054-04	Cross cam	2B	114	G01-0140-14	Torsion spring (C)	2A
50	N30-3006-11	Small pan head screw (3 x 6)	2A, 2B	115	N19-0025-04	Washer (6.1φ x 4.1φ x 0.5t)	2A
51	K29-0239-04	Canceller knob	1B	116	D11-0110-14	Muting arm	2A
52	D21-0396-03	Cam shaft	2B	117	D10-0175-04	Select lever ass'y	2B
53	N19-0024-04	Washer (5.1φ x 10φ x 0.25t)	2B	118	D10-0176-04	Select lever calked ass'y	2B
54	D90-0014-00	Steel ball (2φ)	1B	119	K29-0233-04	Knob ass'y	1B
55	G01-0218-04	Spring for click	1B	120	A53-0009-12	Turntable cover	1B
56	G01-0287-14	Canceller spring	2B	121	N30-3010-15	Flat head screw	1B
57	D10-0173-04	Canceller lever (A)	2B	122	A02-0041-13	Turntable cover sub board	1B
58	N19-0080-00	Special washer (4 x 10φ x 0.5t)	2B	123	N30-3006-46	Pan head screw	1B
59	N09-0197-04	Special screw (3φ P = 0.5)	2B	124	A03-0174-21	Cabinet ass'y	3B
60	G01-0292-04	Tension spring (E)	2B	125	J29-0065-14	Hinge base	3A, 3B
61	D10-0174-04	Canceller lever (B)	2B	126	N61-3113-11	Wood screw	3A, 3B
62	N14-0084-04	Special nut (6φ P = 0.5)	2B	127	J09-0014-14	Shell stand	3A
63	F15-0188-04	Dust sheet	2B	128	A42-0022-13	Bottom board	3B
64	N63-3525-45	Wood screw (3.5φ x 25)	1B	129	F07-0361-03	Motor cover x 2	3A
65	D23-0071-44	Turntable shaft ass'y bearing	2A	130	J03-0022-05	Insulator	3A, 3B

Fig. No.	Parts No.	Description	Re-remarks
131	N29-0042-05	Clip	3A, 3B
132	F07-0373-22	Mechanism cover	3B
133	N09-0171-04	Tap tight screw (3φ x 12)	3A, 3B
134	N30-3010-46	Pan head screw (3 x 10)	3A
135	B59-0020-04	Cramp caution card	1A
136	N30-4014-46	Pan head screw (4 x 14)	1A
137	E30-0459-05	Power cord	3B
138	J19-0345-04	Cord stopper	3A
139	J41-0017-05	Cord bushing	3B
140	N30-3014-46	Pan head screw (3 x 14)	3B
141	E30-0531-05	Audio cable	3B
142	J19-0345-04	Cord stopper	3B
143	J41-0017-05	Cord bushing	3B
144	D02-0013-15	Turntable platter	1A
145	D19-0031-04	Trip pin	1A
146	D16-0037-13	Drive belt	1A
147	G16-0050-12	Turntable sheet	1A
148	W01-0057-04	EP adapter	1B
149	B40-1394-04	Model name plate	3B
150	X27-1090-02	Power supply unit	2A
151	D39-0041-05	PC board support	2A
152	E23-0083-05	Lug type terminal strips	2A, 2B, 3B
153	J21-1355-04	L shaped hardware	2A
154	J61-0044-05	Nylon crammer	3A
155	D10-0241-03	Operation panel ass'y	3A
156	J09-0107-13	Operation panel	3A
157	Operation button	{ D10-0233-03 B42-0634-03	2A
158	D21-0395-14	Shaft	2A
159	N24-3030-60	E washer (3φ)	3A
160	S50-1013-05	Micro switch	3A
161	S50-1012-05	Micro switch	3A
162	N30-2614-46	Pan head screw (2.6 x 14)	3A
163	G02-0062-14	Lock spring	3A
164	N15-1030-46	Washer (3.3φ x 8φ x 0.5t)	3A, 3B
165	N09-3005-46	SEMUS screw (3 x 5)	3A
166	N16-0030-46	Washer (3φ)	3A
167	B30-0101-15	Pilot lamp	2A, 3A
168	N10-2030-46	Nut (3φ)	3A
169	D21-0151-14	Turntable shaft	2A
170	D23-0070-54	Turntable shaft bearing	2A
171	J09-0044-04	Thrust washer	2A
172	D90-0001-04	Steel ball	2A
173	N09-0059-04	Screw (3φ)	2A
174	N16-0030-46	Spring washer	2A
175	N24-2080-45	Stopper ring	2A
176	N19-0082-00	Small washer (4.5φ x 8φ x 0.5t)	2A
177	J61-0014-05	Free up belt	3B
178	N15-1040-46	Flat washer (for 4φ)	1A
179	N15-1030-11	Washer	1B
180	K29-0184-04	Knob	1B
181	J20-0268-04	Left hinge plate	1B
182	G09-0006-14	Plate spring	1B
183	J19-0406-14	Spring holder	1B
184	G01-0250-14	Tension spring	1B
185	J29-0048-34	Cover	1B
186	J20-0277-04	Right hinge plate	1B, 3A
187	N61-3110-46	Wood screw	3B
188	D11-0204-04	Select arm calked ass'y	2B
189	N30-3014-46	Pan head screw	3A
190	J50-0059-23	Right hinge ass'y	1B
191	J50-0060-23	Left hinge ass'y	1B
192	A53-0008-22	Turntable cover ass'y	1B
193	G13-0085-04	Rubber cushion	3A
194	F31-0104-24	Reinforce hardware x 2	3A, 3B
195	N30-2616-46	Pan head screw (2.6 x 16)	1A, 3A

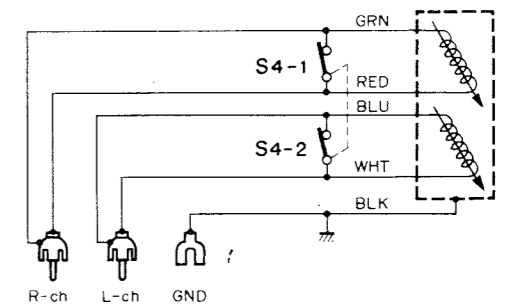
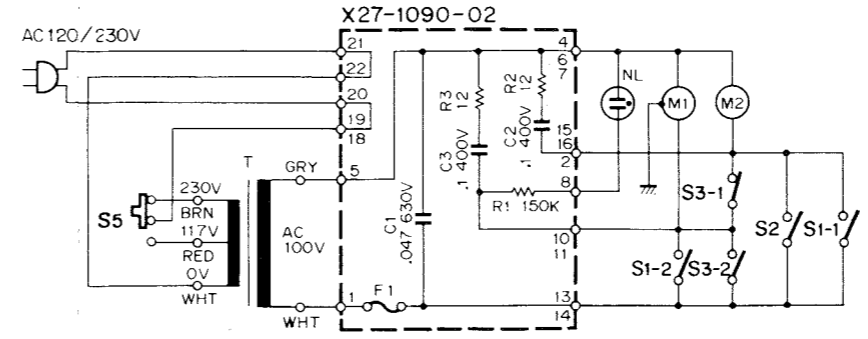
Fig. No.	Parts No.	Description	Re-remarks
196	E23-0089-05	GND lug	3A
197	J61-0054-05	Vinyl tie	3A, 3B
198	F10-0379-04	Shield paper	3B
199	L02-0064-05	Power transformer	2A
200	J20-0302-04	Power transformer mounting hardware	2A
201	N10-2040-46	Nut (4φ)	2A
202	N30-4008-46	Pan head screw (4 x 8)	2A
203	S31-2001-05	Slide switch	2A
204	D32-0075-04	Switch stopper	2A
205	B43-0161-04	Brand badge	3A

POWER SUPPLY (X27-1090-02)

Ref. No.	Parts list	Description	Re-remarks
C1	CQ93M2J473J	Mylar 0.047μF 630WV	
C2,3	CQ93M2G104J	Mylar 0.1μF 400WV	
R1	PD14BY2E154J	Carbon 150kΩ ±5% 1/4W	
R2,3	PD14BY2E120J	Carbon 12Ω ±5% 1/4W	
F1	F05-3112-05	Fuse (315 mA)	
-	J13-0032-05	Fuse holder	
-	B41-0206-04	Fuse sticker	

OTHER PARTS

Ref. No.	Parts list	Description	Re-remarks
-	B22-9003-04	Over hang gage	
-	B41-0104-04	Power voltage sticker	
-	B42-0009-04	Passed sticker	
-	B42-0262-04	SEV sticker	
-	B50-1529-00	Instruction manual	
-	H01-1575-04	Carton case	
-	H10-1081-04	Protection board	
-	H10-1232-13	Buffer fixture	
-	H10-1288-02	Polystyrene foamed fixture (A)	
-	H10-1289-02	Polystyrene foamed fixture (B)	
-	H10-1251-12	Polystyrene foamed fixture (C)	
-	H20-0382-04	Polyethylene cover	
-	H25-0016-00	Polyethylene bag	
-	H25-0029-04	Polyethylene bag x 2	
-	H25-0078-00	Polyethylene bag	
-	J42-0031-04	Oiler	
-	W01-0035-00	Small screw-driver	



- M1 : DRIVE MOTOR
- M2 : TIMING MOTOR
- T : POWER TRANSFORMER
- S1-1: PLAY/CUT SWITCH (MICRO SWITCH)
- S1-2: REP. SWITCH (MICRO SWITCH)
- S2 : AUTO RETURN (ARM SWITCH (C))
- S3 : TIMING SWITCH (ARM SWITCH (A1))
- S4 : MUTING SWITCH (ARM SWITCH (D1))
- S5 : POWER VOLTAGE SELECTOR (SLIDE)