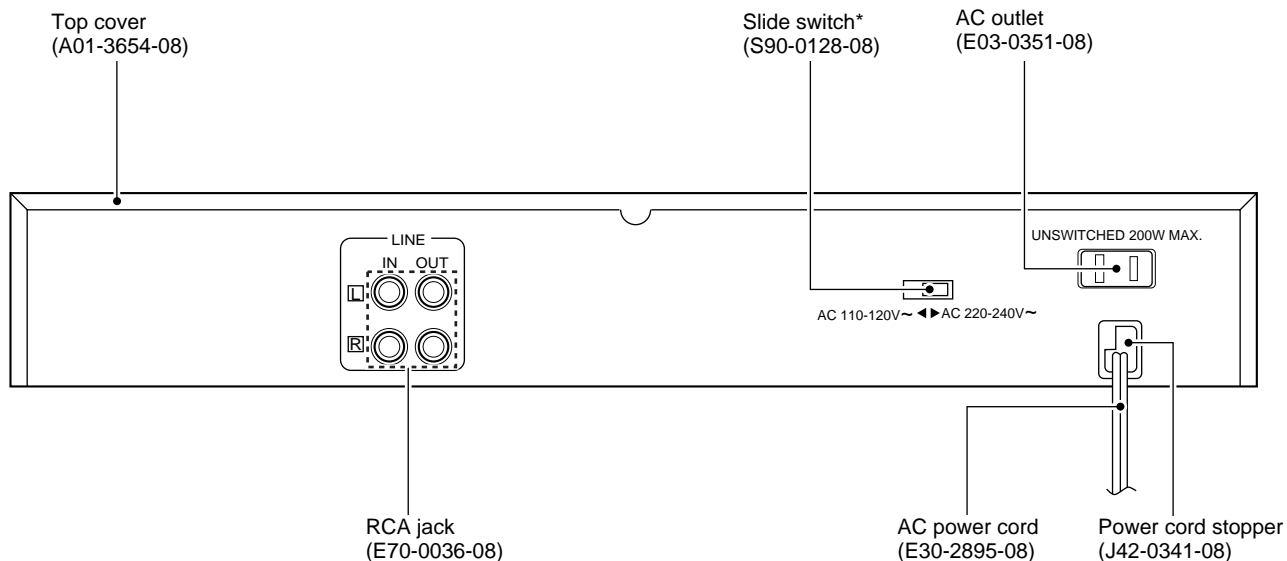
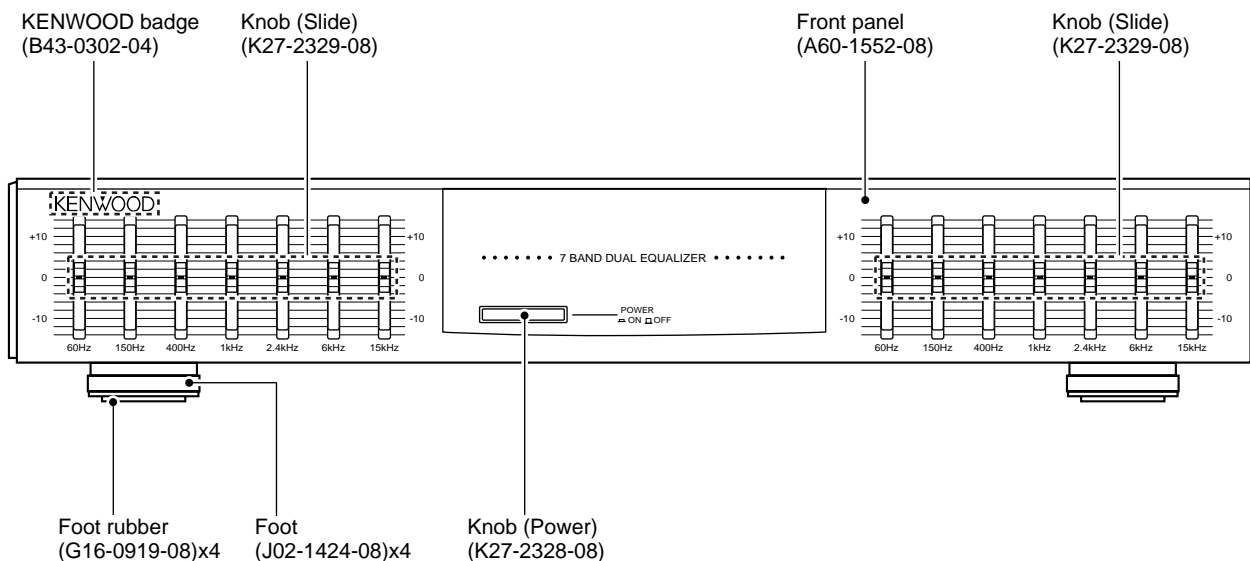


KE-205 SERVICE MANUAL

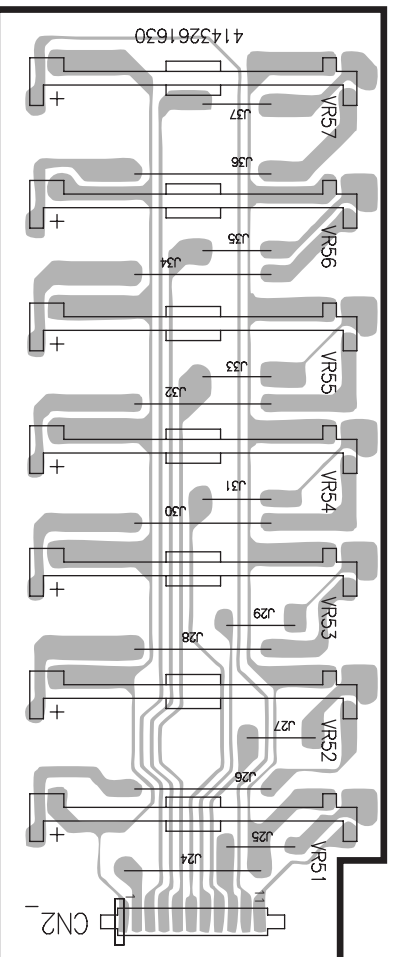
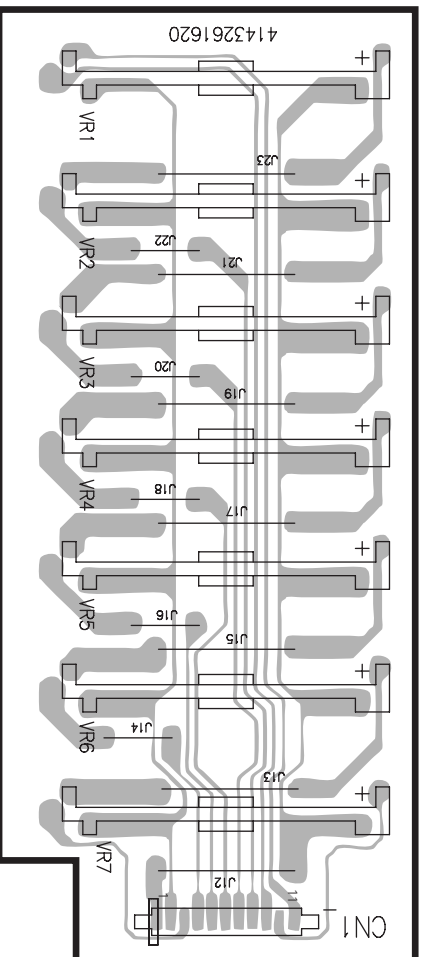
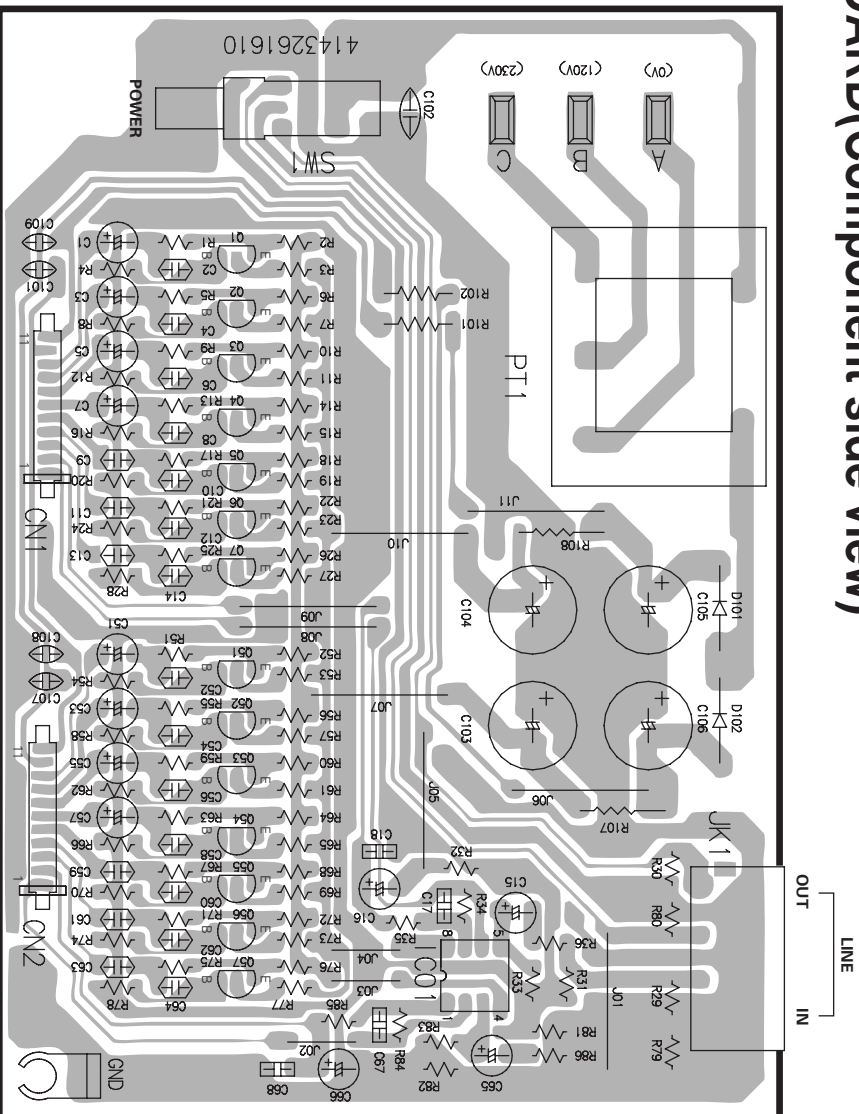
© 1998-5/B51-5429-00 (K/K) 1396



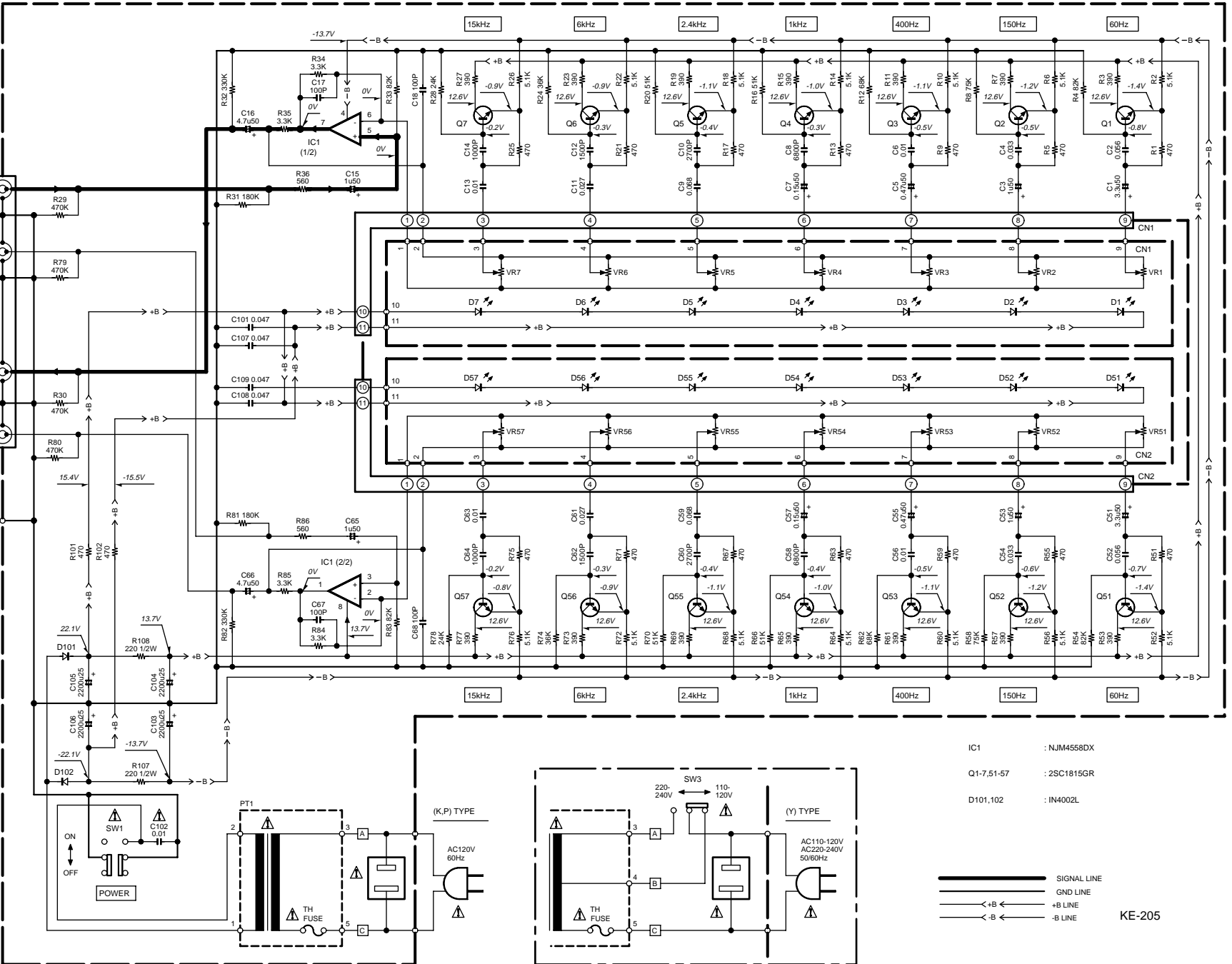
* Refer to parts list on page 5.



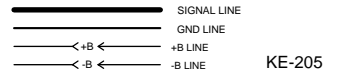
PC BOARD(Component side view)



Refer to the schematic diagram for the value of resistors and capacitors.



- IC1 : NJM4558DX
- Q1-7,51-57 : 2SC1815GR
- D101,102 : IN4002L



KE-205

CAUTION: For continued safety, replace safety critical components only with manufacturer's recommended parts (refer to parts list). Δ indicates safety critical components. For continued protection against risk of fire, replace only with same type and rating fuse(s). To reduce the risk of electric shock, leakage-current or resistance measurements shall be carried out (exposed parts are acceptably insulated from the supply circuit) before the appliance is returned to the customer.

The DC voltage is an actual reading measured with a high impedance type voltmeter. The impedance value may vary depending on the measuring instruments used or on the product.

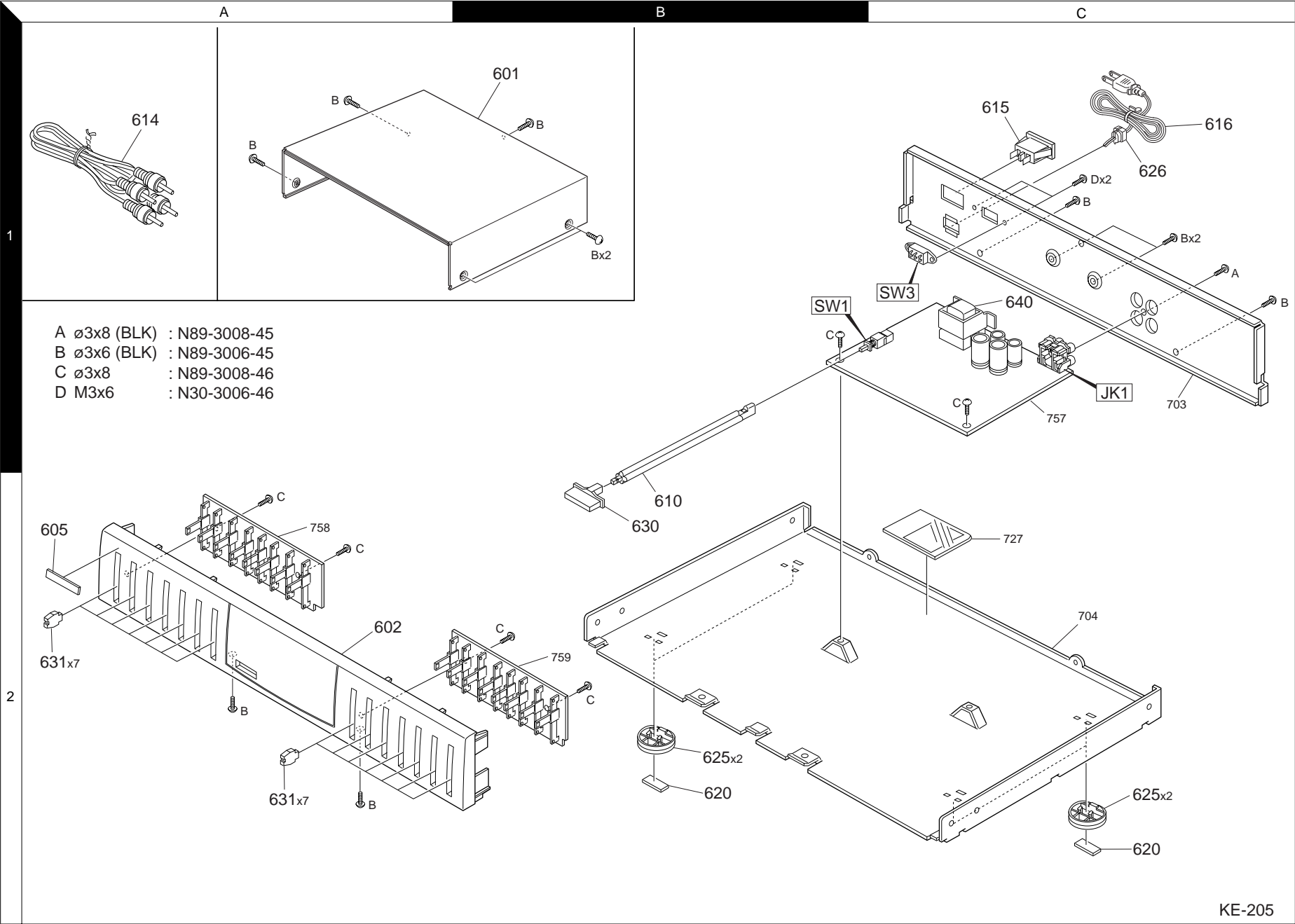
Y09-4260-00

NJM4558DX



KENWOOD
KE-205

Parts with exploded numbers larger than 700 are not supplied.



- A \varnothing 3x8 (BLK) : N89-3008-45
- B \varnothing 3x6 (BLK) : N89-3006-45
- C \varnothing 3x8 : N89-3008-46
- D M3x6 : N30-3006-46

EXPLODED VIEW

KE-205

KE-205

* New Parts

Parts without **Parts No.** are not supplied.Les articles non mentionnés dans le **Parts No.** ne sont pas fournis.Teile ohne **Parts No.** werden nicht geliefert.

①

Ref. No	Add-ress	New Parts	Parts No.	Description	Desti-nation	Re-marks
KE-205						
601	1B	*	A01-3654-08	TOP COVER		
602	2A	*	A60-1552-08	FRONT PANEL		
605	2A		B43-0302-04	BADGE,KENWOOD		
-			B46-0121-33	WARRANTY CARD	P	
-			B46-0302-04	WARRANTY CARD	K	
-		*	B60-3895-08	INSTRUCTION BOOK(E)		
-		*	B60-3896-08	INSTRUCTION BOOK(F)	P	
610	2B	*	D21-1906-08	POWER KNOB SHAFT		
614	1A		E30-0505-05	PATCH CORD BLK-1M		
615	1C		E03-0351-08	AC OUTLET HJC-030A1(P)		
616	1C	*	E30-2895-08	AC CORD 6.5FT BLK SPT-2		
620	2B,2C		G16-0919-08	FOOT RUBBER		
-		*	H10-7494-08	SNOW BOX		
-		*	H50-2987-08	MASTER CARTON		
625	2B,2C		J02-1424-08	KENWOOD FOOT		
626	1C	*	J42-0341-08	CORD STOPPER 5RF-B		
630	2B	*	K27-2328-08	POWER KNOB		
631	2A	*	K27-2329-08	SLIDE KNOB		
640	1C	*	L07-2629-08	POWER TRANS EI-35	KP	
640	1C	*	L07-2630-08	POWER TRANS EI-35	Y	

ELECTRONIC PARTS

C1			CE04KW1H3R3M	ELECTRO	3.3UF	50WV
C2			CQ92FM1H563J	MYLAR	0.056UF	J
C3			CE04KW1H010M	ELECTRO	1.0UF	50WV
C4			CQ92FM1H333J	MYLAR	0.033UF	J
C5			CE04KW1HR47M	ELECTRO	0.47UF	50WV
C6			CQ92FM1H103J	MYLAR	0.010UF	J
C7			CE04KW1HR15M	ELECTRO	0.15UF	50WV
C8			CQ92FM1H682J	MYLAR	6800PF	J
C9			CQ92FM1H683J	MYLAR	0.068UF	J
C10			CQ92FM1H272J	MYLAR	2700PF	J
C11			CQ92FM1H273J	MYLAR	0.027UF	J
C12			CQ92FM1H152J	MYLAR	1500PF	J
C13			CQ92FM1H103J	MYLAR	0.010UF	J
C14			CQ92FM1H102J	MYLAR	1000PF	J
C15			CE04KW1H010M	ELECTRO	1.0UF	50WV
C16			CE04KW1H4R7M	ELECTRO	4.7UF	50WV
C17 ,18			C91-0745-05	CERAMIC	100PF	K
C51			CE04KW1H3R3M	ELECTRO	3.3UF	50WV
C52			CQ92FM1H563J	MYLAR	0.056UF	J
C53			CE04KW1H010M	ELECTRO	1.0UF	50WV
C54			CQ92FM1H333J	MYLAR	0.033UF	J
C55			CE04KW1HR47M	ELECTRO	0.47UF	50WV
C56			CQ92FM1H103J	MYLAR	0.010UF	J
C57			CE04KW1HR15M	ELECTRO	0.15UF	50WV
C58			CQ92FM1H682J	MYLAR	6800PF	J
C59			CQ92FM1H683J	MYLAR	0.068UF	J
C60			CQ92FM1H272J	MYLAR	2700PF	J

L : Scandinavia K : USA P : Canada R : Mexico C : China I : Malaysia

Y : PX(Far East, Hawaii) T : Europe E : Europe G : Germany V : China(Shanghai)

Y : AAFES(Europe) X : Australia Q : Russia H : Korea M : Other Areas

⚠ indicates safety critical components.

* New Parts

Parts without **Parts No.** are not supplied.Les articles non mentionnés dans le **Parts No.** ne sont pas fournis.Teile ohne **Parts No.** werden nicht geliefert.

②

Ref. No	Add-ress	New Parts	Parts No.	Description	Desti-nation	Re-marks
C61			CQ92FM1H273J	MYLAR	0.027UF	J
C62			CQ92FM1H152J	MYLAR	1500PF	J
C63			CQ92FM1H103J	MYLAR	0.010UF	J
C64			CQ92FM1H102J	MYLAR	1000PF	J
C65			CE04KW1H010M	ELECTRO	1.0UF	50WV
C66			CE04KW1H4R7M	ELECTRO	4.7UF	50WV
C67 ,68			C91-0745-05	CERAMIC	100PF	K
C101			CK45FB1H473Z	CERAMIC	0.047UF	Z
C102			C91-0647-05	CERAMIC	0.010UF	P
C103,104			CE04KW1E222M	ELECTRO	2200UF	25WV
C105,106			CE04KW1E102M	ELECTRO	1000UF	25WV
C107-109			CK45FB1H473Z	CERAMIC	0.047UF	Z
JK1	1C		E70-0036-08	4P RCA JACK HSP-244V1-01		
R107,108			R92-1741-08	FUSE RESIST 220 1/2W		
VR1 -7		*	R33-0002-08	SLIDE VR NC308N 100KBX1		
VR51-57		*	R33-0002-08	SLIDE VR NC308N 100KBX1		
SW1	1B	*	S68-0108-08	PUSH SWITCH,SPUN19C604-CP5		
SW3	1C	*	S90-0128-08	SLIIDE (VOLTAGE)	Y	
D101,102			1N4002L	DIODE		
IC1			NJM4558DX	IC(OP AMP X2)		
Q1 -7			2SC1815GR	TRANSISTOR		
Q51 -57			2SC1815GR	TRANSISTOR		

L : Scandinavia K : USA P : Canada R : Mexico C : China I : Malaysia

Y : PX(Far East, Hawaii) T : Europe E : Europe G : Germany V : China(Shanghai)

Y : AAFES(Europe) X : Australia Q : Russia H : Korea M : Other Areas

⚠ indicates safety critical components.

SPECIFICATIONS

Equalizer characteristic

Variable range	± 10 dB
Center frequencies	60 Hz, 150 Hz, 400Hz, 1kHz, 2.4 kHz, 6 kHz, 15 kHz
Total harmonic distortion	Less than 0.009% (20 Hz to 20 kHz)
Maximum output voltage	4.3 V (THD 0.01%)
S/N ratio	96 dB (IHF-A network, 1V)
Input impedance	47 kΩ
Output impedance	3.6 kΩ

General

Power consumption	5 W
⚠ AC outlet unswitched	1 (200W max)
Dimensions	W : 440mm (17-5/16") H : 74mm (2-15/16") D : 273mm (10-3/4")
Weight	2.3 kg (5.1lb)



1. KENWOOD follows a policy of continuous advancements in development. For this reason specifications may be changed without notice
2. The full performance may not be exhibited in extremely cold location (under a water-freezing temperature).

Note:

Component and circuit are subject to modification to insure best operation under differing local conditions. This manual is based on Europe (E) standard, and provides information on regional circuit modification through use of alternate schematic diagrams, and information on regional component variations through use of parts list.

KENWOOD CORPORATION

14-6, Dogenzaka 1-chome, Shibuya-ku, Tokyo, 150-8501 Japan

KENWOOD SERVICE CORPORATION

P.O BOX 22745, 2201 East Dominguez St., Long Beach, CA 90801-5745, U.S.A.

KENWOOD ELECTRONICS CANADA INC.

6070 Kestrel Road, Mississauga, Ontario, Canada L5T 1S8

KENWOOD ELECTRONICS LATIN AMERICA S.A.

P.O BOX 55-2791, Piso 6 plaza Chase, Cl. 47 y Aquilino de la Guardia Panama, Republic de Panama

KENWOOD ELECTRONICS BRASIL LTDA.

Av Indianópolis, 628, 04062-001 Planalto Paullista São Paulo-SP-Brasil

KENWOOD ELECTRONICS U.K. LIMITED

KENWOOD House, Dwight Road, Watford, Herts., WD1 8EB., United Kingdom

KENWOOD ELECTRONICS BELGIUM N.V.

Meachelsesteenweg 418, B-1930 Zaventem, Belgium

KENWOOD ELECTRONICS DEUTSCHLAND GMBH

Rembrücker Str. 15, 63150 Heusenstamm, Germany

KENWOOD ELECTRONICS FRANCE S.A.

13 Boulevard Ney, 75018 Paris, France

KENWOOD ELECTRONICS ITALIA S.p.A.

Via G. Sirtori, 7/9 20129, Milano, Italy

KENWOOD IBÉRICA S.A.

Bolivia, 239-08020 Barcelona, Spain

KENWOOD ELECTRONICS AUSTRALIA PTY. LTD.

(A.C.N. 001499 074)
P.O Box 504, 8 Figtree Drive, Australia Centre, Homebush, N.S.W. 2140, Australia

KENWOOD & LEE ELECTRONICS, LTD.

Unit 3712-3724, Level 37, Tower 1, Metroplaza, 223 Hing Fong Road, Kwai Fong N.T., Hong Kong

KENWOOD ELECTRONICS GULF FZE

P.O.Box 61318, Jebel Ali, Dubai, U.A.E.

KENWOOD ELECTRONICS SINGAPORE PTE LTD.

No. 1 Genting Lane #02-02, KENWOOD Building, Singapore, 349544

KENWOOD ELECTRONICS (MALAYSIA) SDN BHD.

#4.01 Level 4, Wisma Academy Lot 4A, Jalan 19/1 46300 Petaling Jaya Selangor Darul Ehsan Malaysia

KENWOOD ELECTRONICS (THAILAND) CO., LTD.

573/111 Soi Ramkhamhaeng 39, Ramkhamhaeng Road, Wangthonglang, Bangkok, Bangkok 10301 Thailand