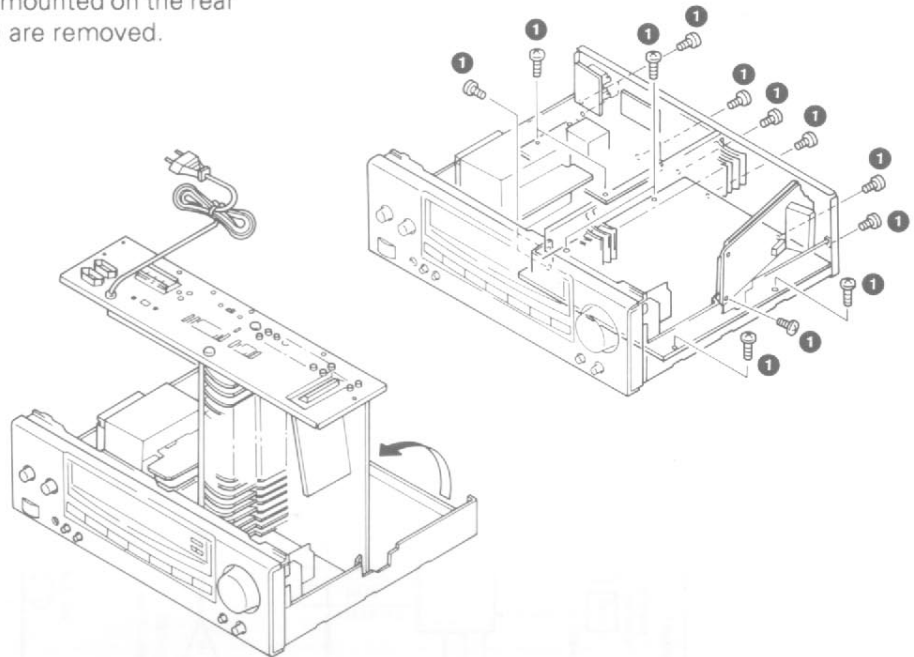


KR-A3070 [E, G]

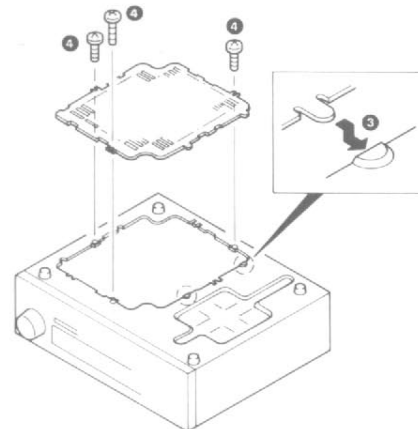
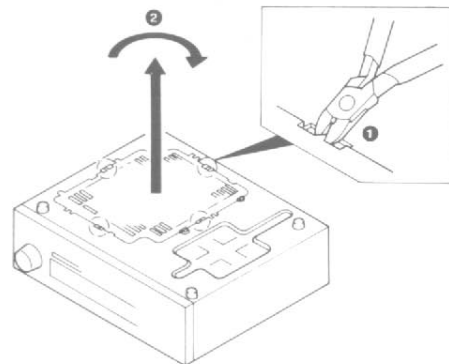
DISASSEMBLY FOR REPAIR

[Illustrations are reference materials.]

1. Repair can be carried out with the Main (AUDIO) PCB and the power supply PCB mounted on the rear panel when the 17 screws (❶) are removed.

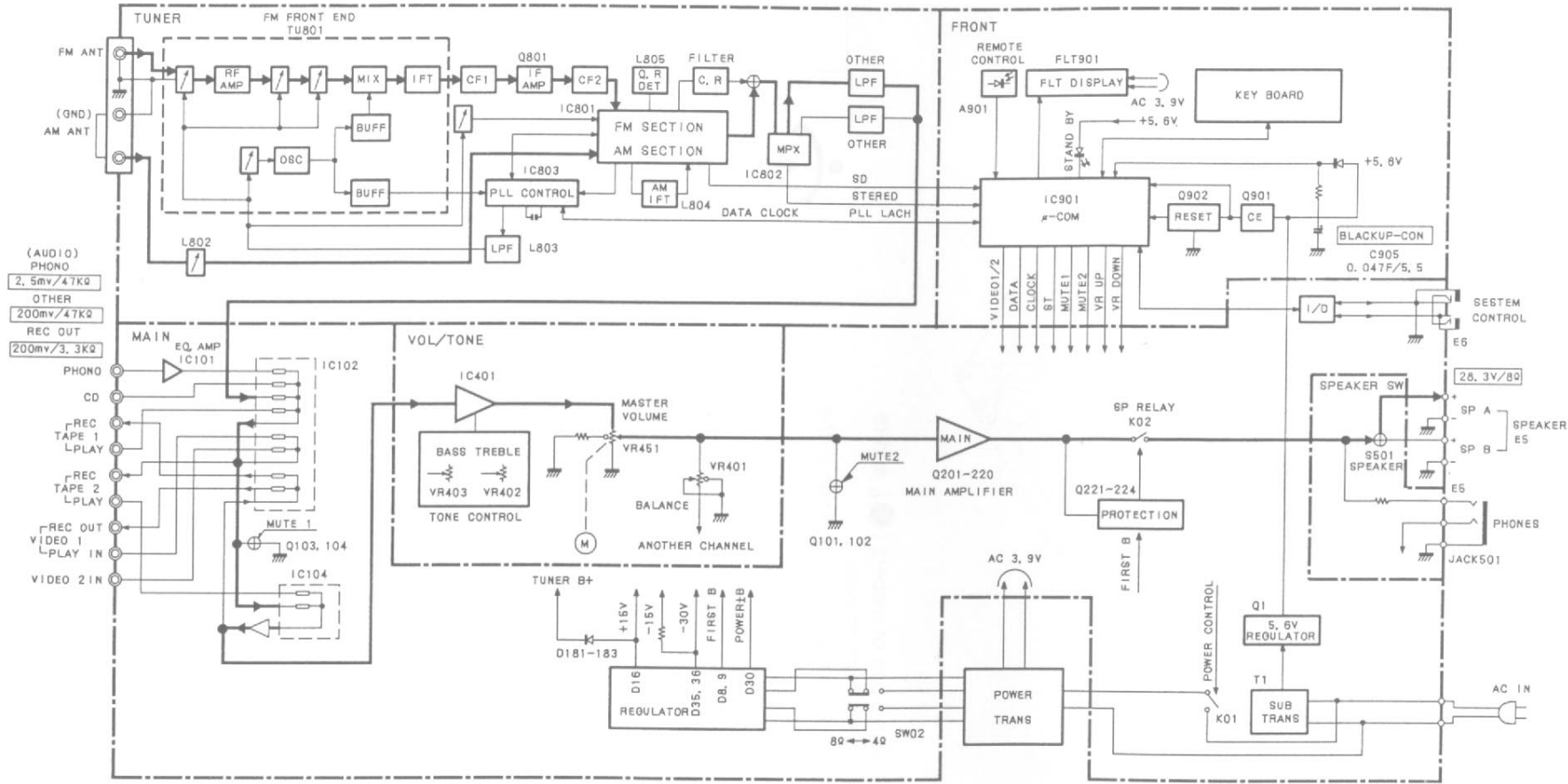


2. Cut the 4 places with a pair of nippers (❶), and remove the bottom panel from chassis.
3. Move the unit holder from the current position to the open mounting position.
4. Rotate the lid, which was cut off, by 180° degrees (❷).
5. Insert the lids in the 2 places of the chassis (❸), and mount them with the 3 screws (❹).



KR-A3070 [E, G]

BLOCK DIAGRAM



KR-A3070 [E, G]

ADJUSTMENT

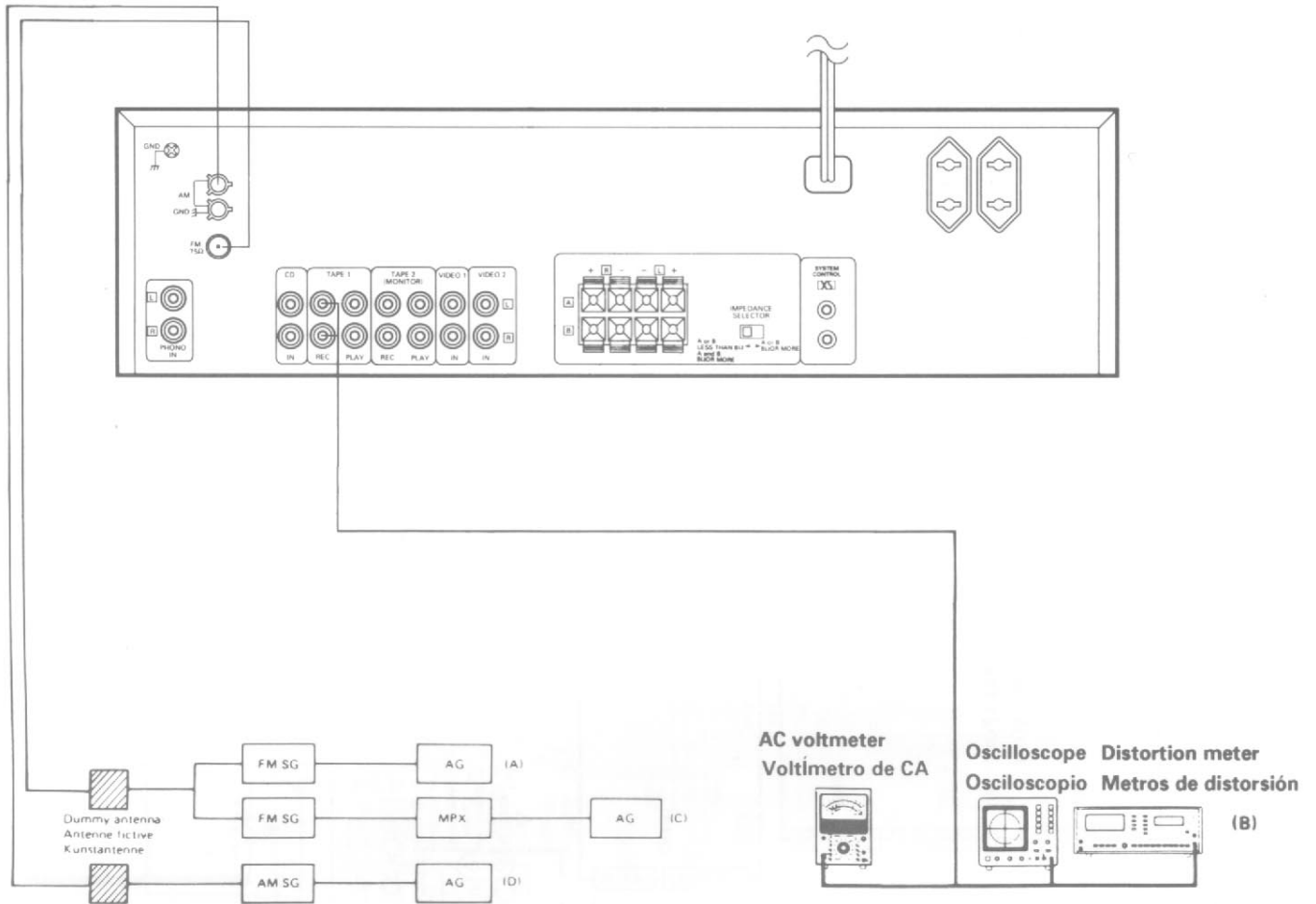
AM. Section: If alignment point is "—", Confirm the value.
If not, replace the front end pack.

No.	ITEM	INPUT SETTINGS	OUTPUT SETTINGS	TUNER SETTINGS	ALIGNMENT POINTS	ALIGN FOR	FIG.
FM SECTION		SELECTOR: FM					
1	DISCRIMINATOR	(A) 98.0MHz 1kHz, ±75kHz dev. 60dBμ(ANT. input)	Connect a DC voltmeter between TP803 and TP804. (TUNER UNIT)	AUTO or MONO 98.0MHz	L806 (TUNER UNIT)	0V	(a)
2	VCO	(A) 98.0MHz 0 dev. 60dBμ(ANT. input)	Connect a frequency counter between TP805 and TP806. (TUNER UNIT)	AUTO 98.0MHz	VR802 (TUNER UNIT)	19.00kHz	(b)
3	DISTORTION (STEREO)	(C) 98.0MHz 1kHz, ±68.25kHz dev. Selector: L or R Pilot: ±6.75kHz dev. 60dBμ(ANT. input)	(B)	98.0MHz	IFT (W02-)	Minimum distortion. (L or R)	
4	SEPARATION	(C) 98.0 MHz 1kHz, ±40kHz dev. Pilot : 6kHz dev. Selector : L or R 60dB μ (ANT. input)	(B)	AUTO 98.0MHz	VR803 (TUNER UNIT)	Minimum crosstalk	
5	TUNING LEVEL	(A) 98.0MHz 0 dev 18dBμ(ANT. input)	(B)	AUTO or MONO 98.0MHz	VR801 (TUNER UNIT)	Adjust VR801 and stop at the point where FLT901(TUNED) goes on.	
AM SECTION		SELECTOR: AM					
(1)	TUNING LEVEL	(D) 1000(999)kHz 26dBμ(ANT. input)	(B)	-	VR804 (TUNER UNIT)	Adjust VR804 and stop at the point where FLT901(TUNED) goes on.	
AUDIO SECTION							
<1>	IDLE CURRENT	—	Connect a DC voltmeter across CP1 or TP2(L) CP2 or TP1(R) (MAIN UNIT)	Volume:0	VR101(L) VR102(R) (MAIN UNIT)	5mV	(d)

KR-A3070 [E, G]

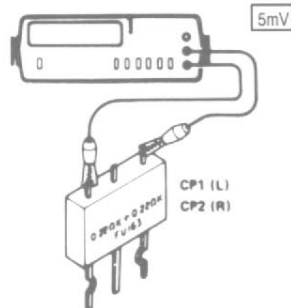
ADJUSTMENT/AJUSTES

SYSTEM CONNECTIONS/CONEXIONES DEL SISTEMA



System connections/Conexiones del sistema

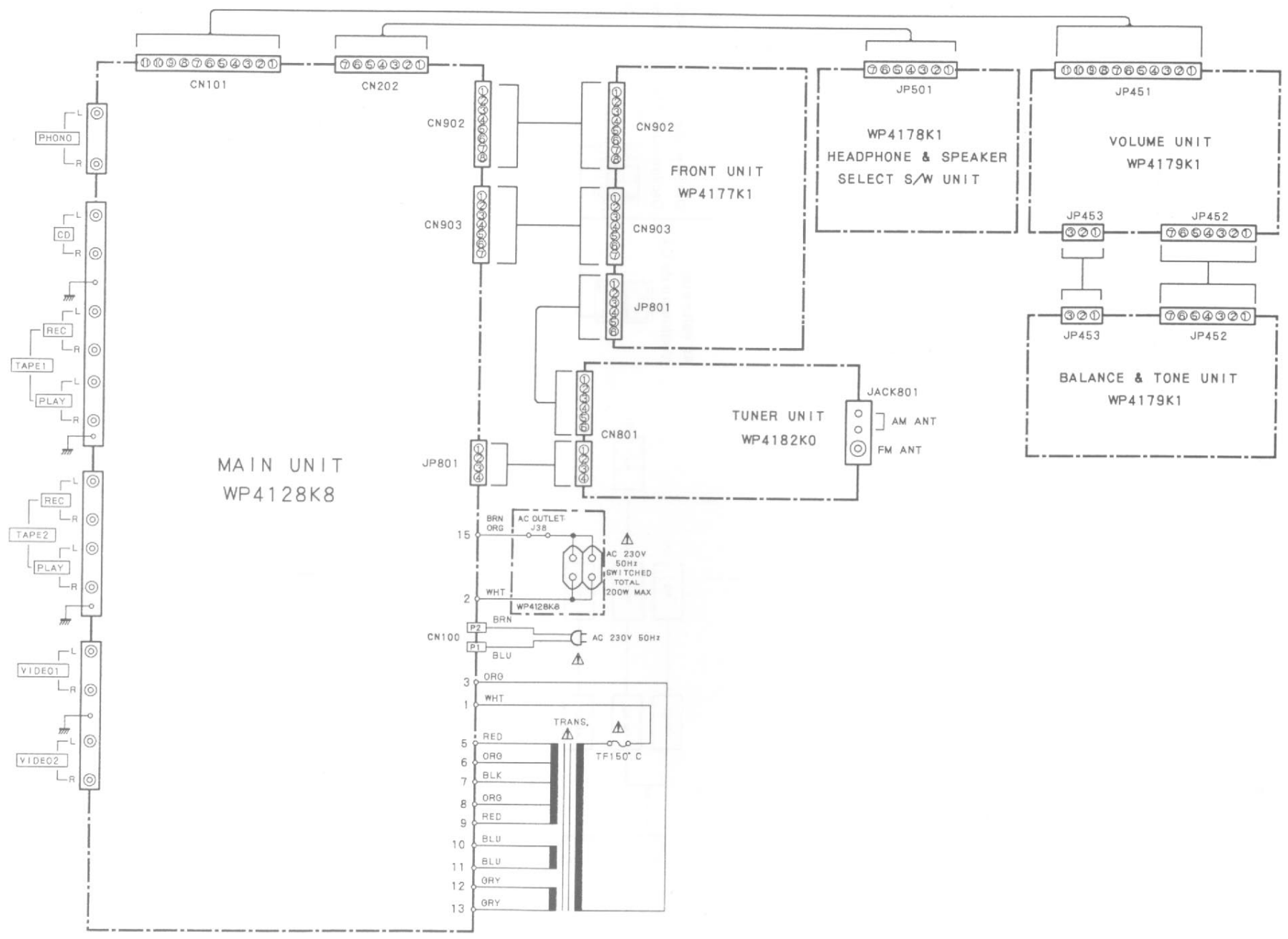
(e) DC voltmeter
Voltímetro de CC



(E)

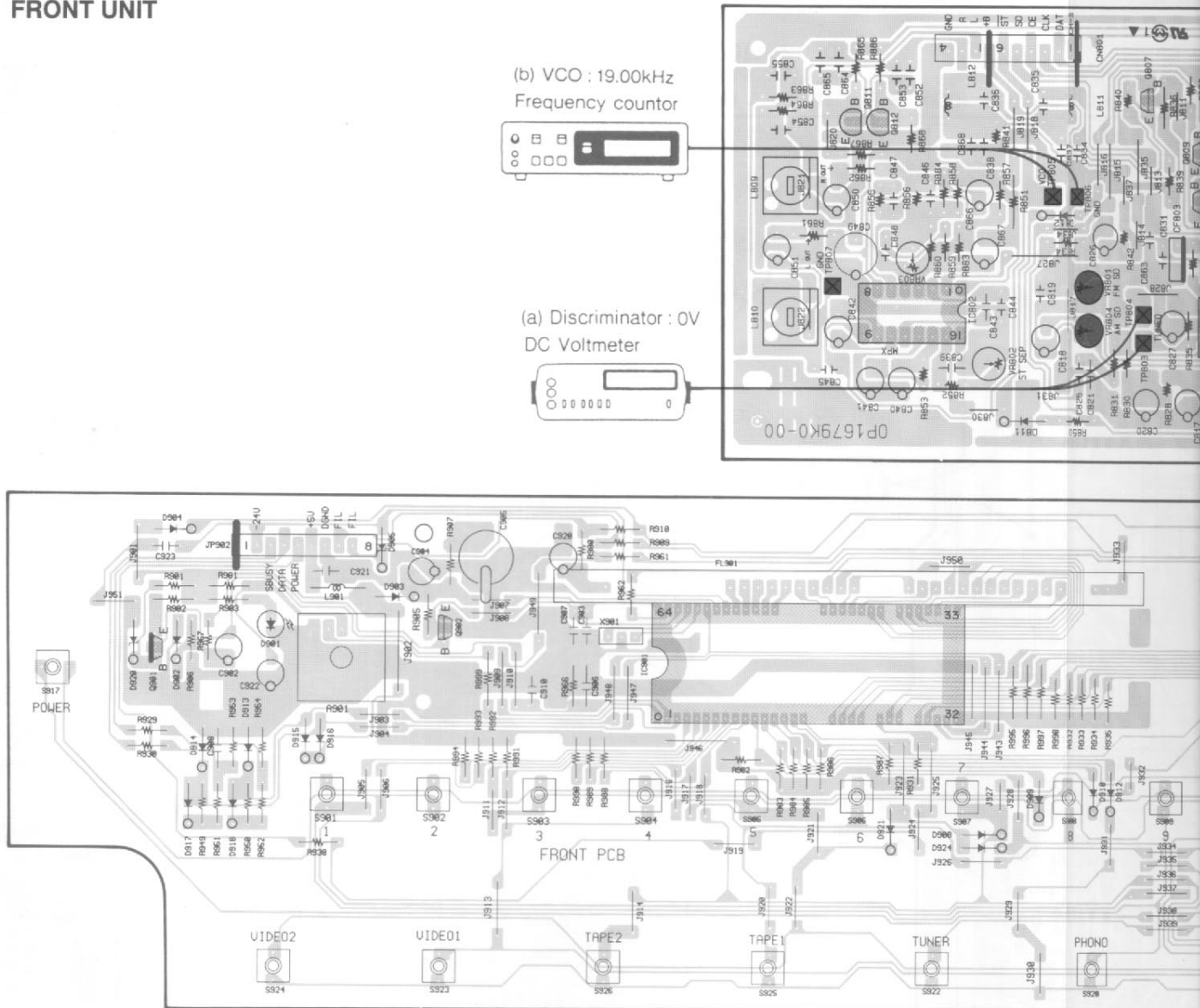
KR-A3070 [E, G]

WIRING DIAGRAM



PC BOARD (Component side view)

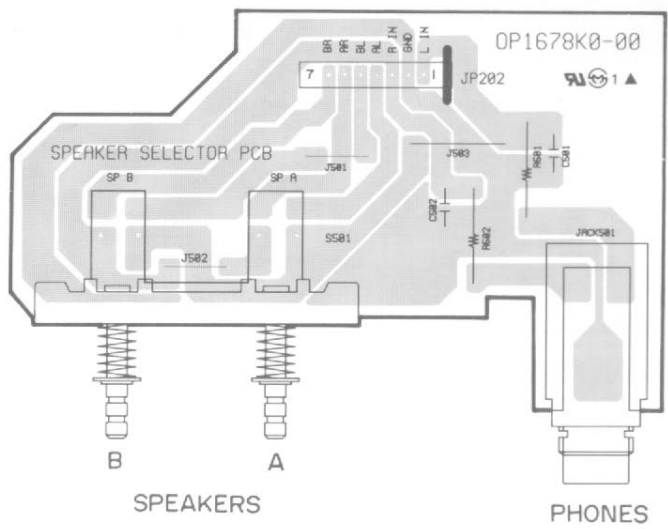
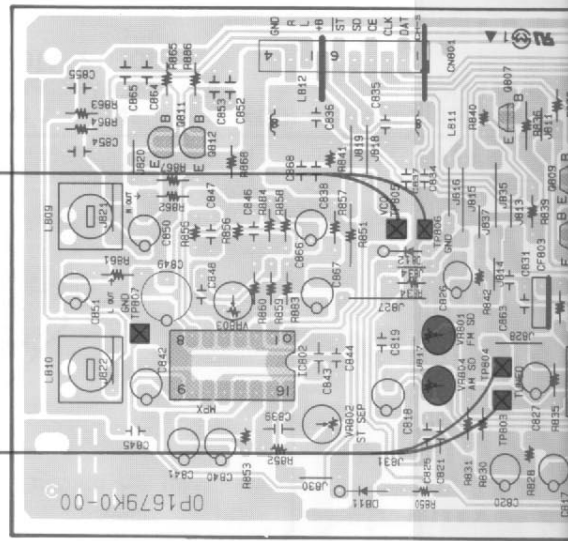
FRONT UNIT



(b) VCO : 19.00kHz
Frequency counter

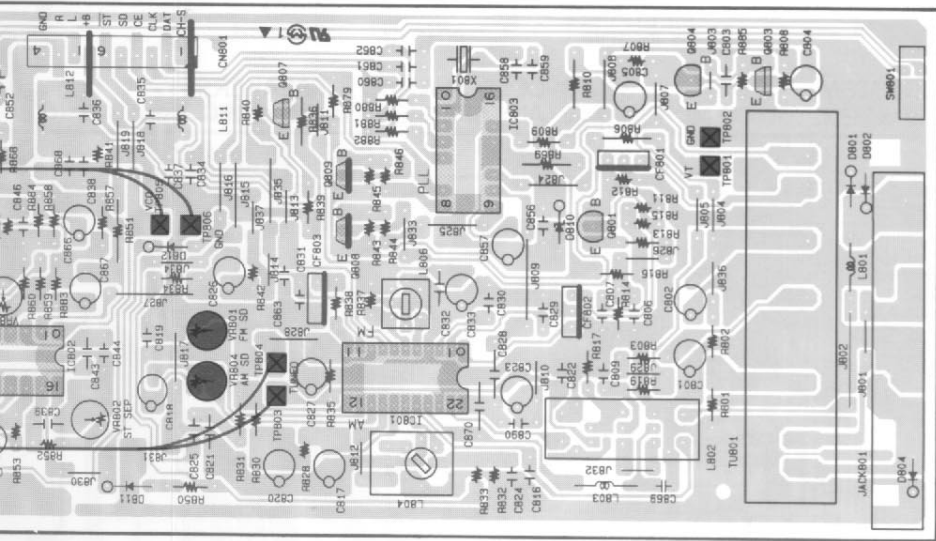


(a) Discriminator : 0V
DC Voltmeter

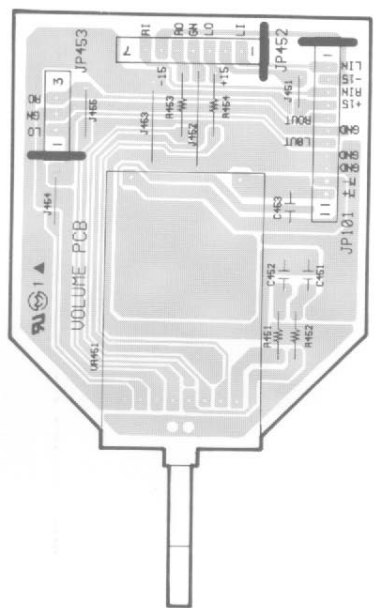
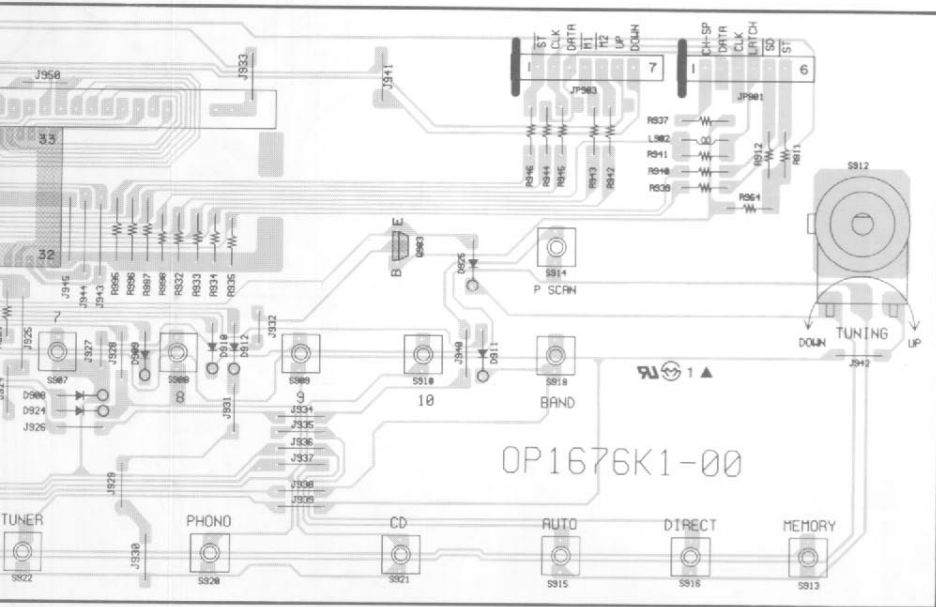


SPEAKERS

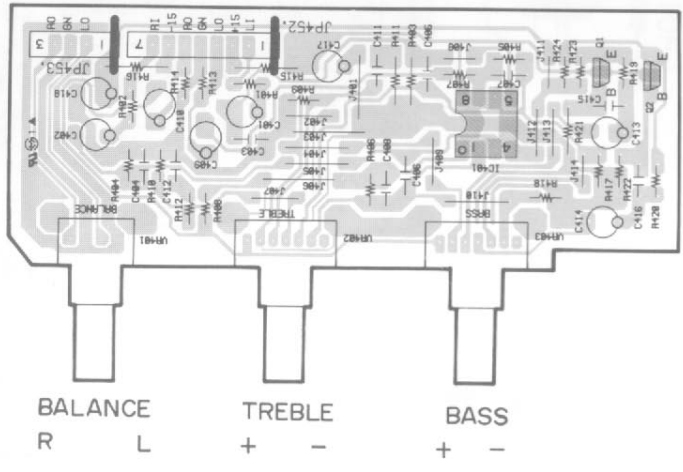
PHONES



FM ANTENNA
AM



VOLUME CONTROL



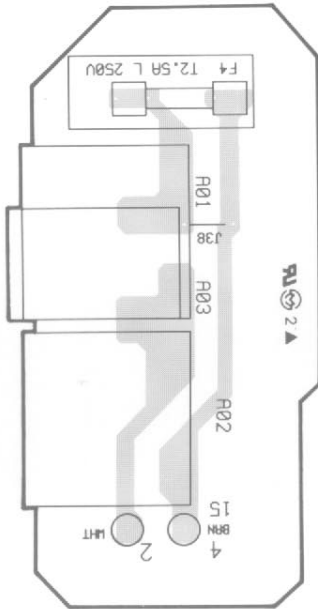
BALANCE R L
TREBLE + -
BASS + -



PC BOARD (Component side view)

MAIN UNIT

SWITCHED TOTAL 200W MAX.
AC230V ~ 50HZ

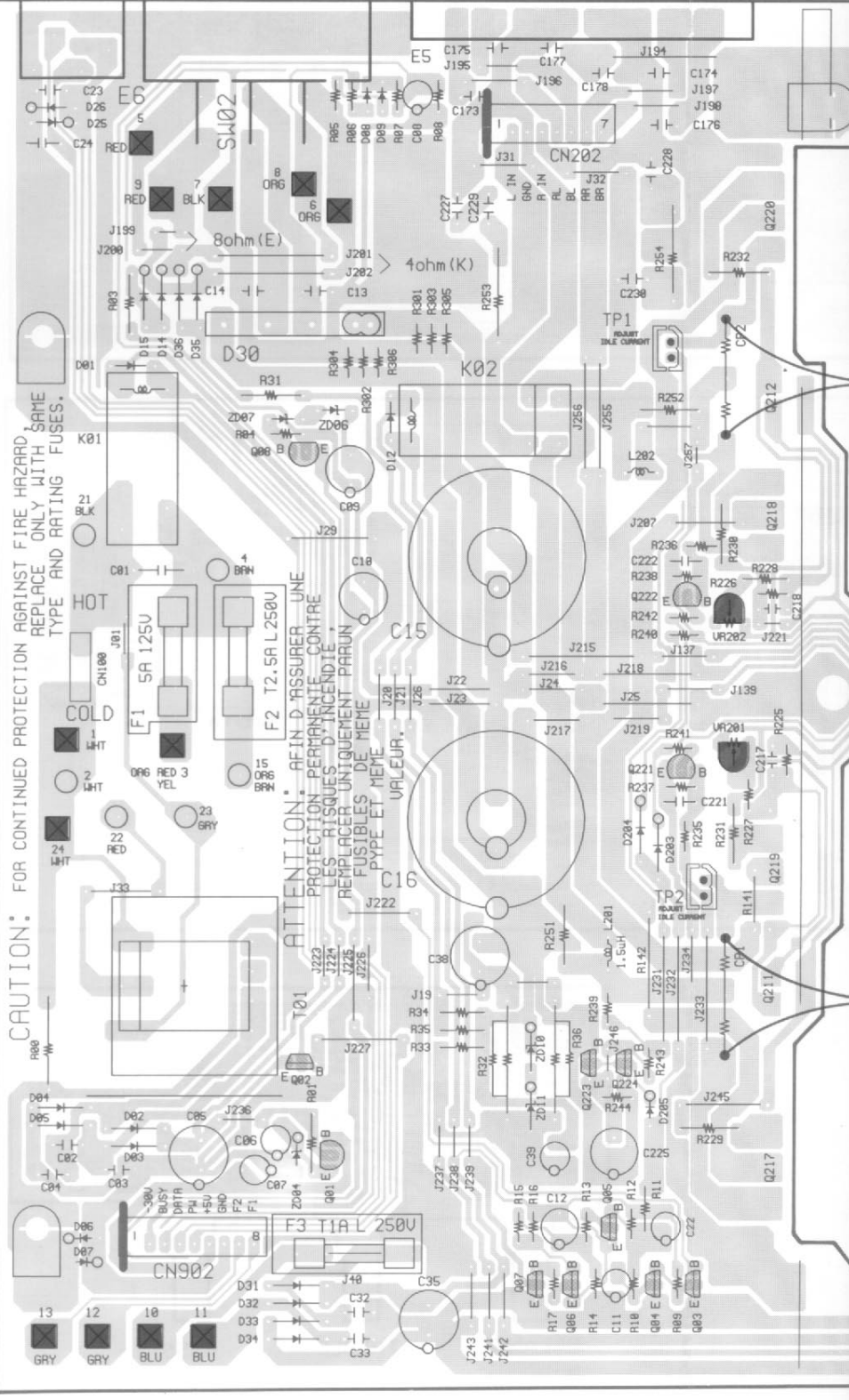


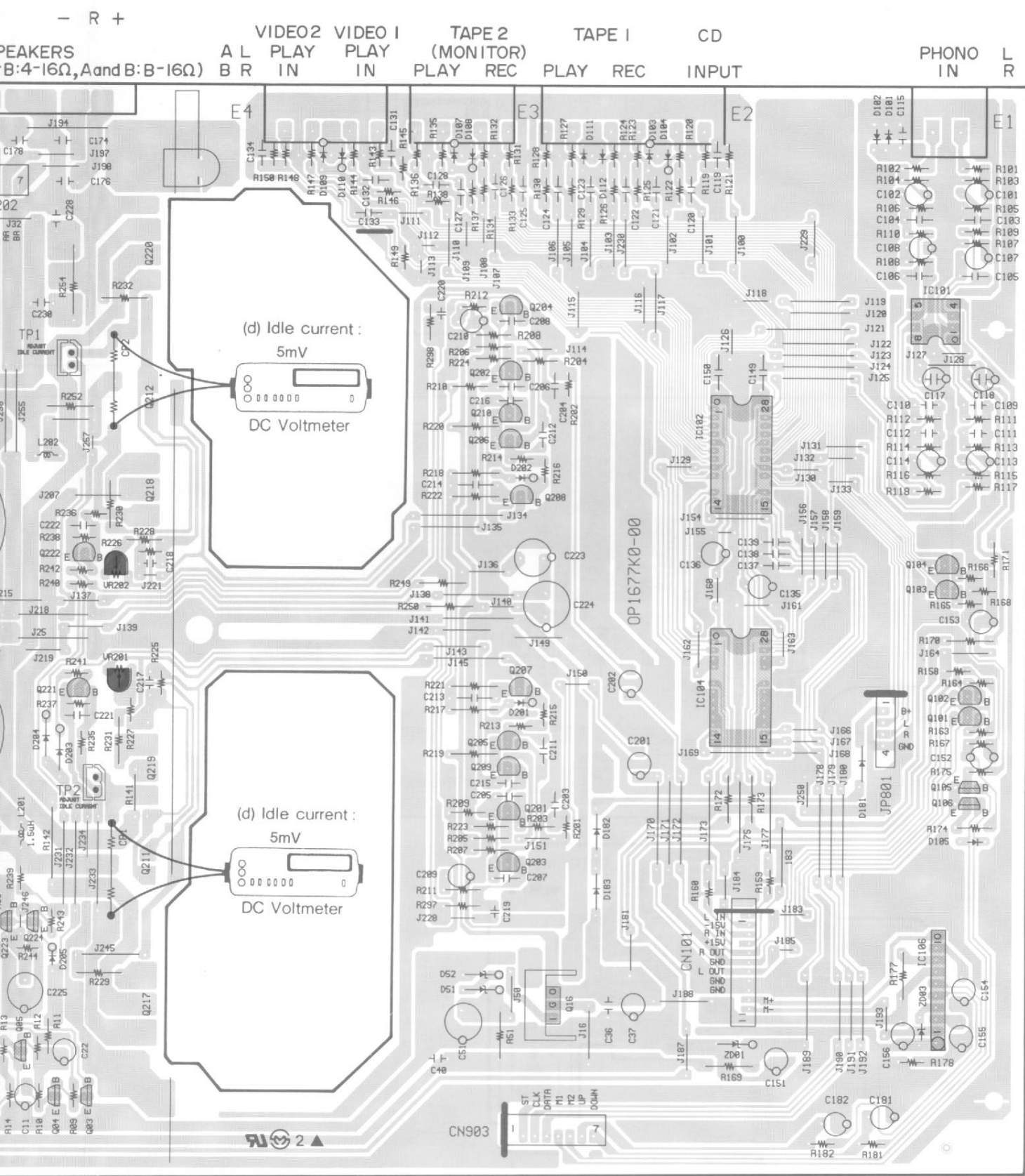
FRONT

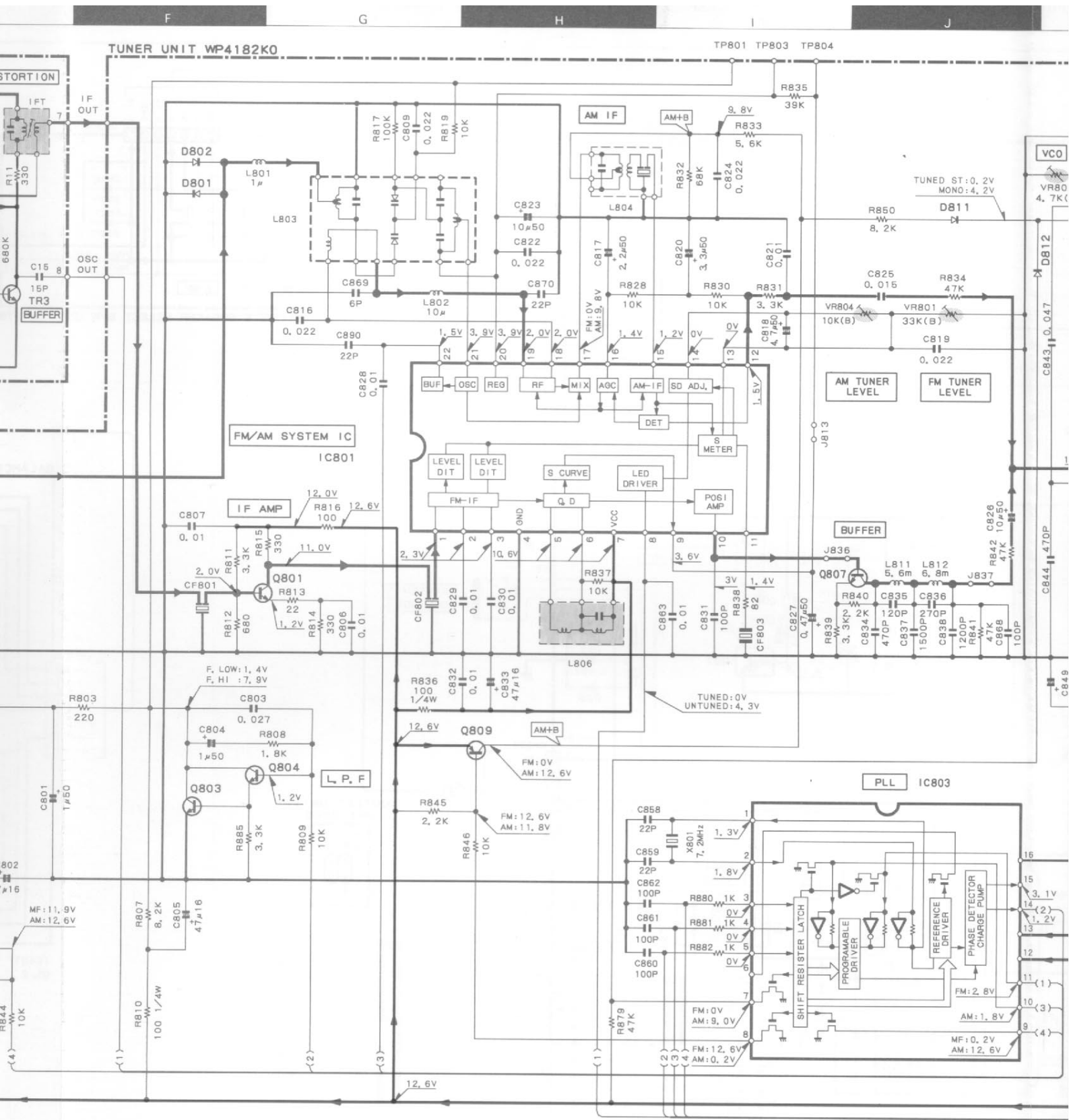
IMPEDANCE SELECTOR

+ L - - R +

SYSTEM A or B: ◀ ▶ A or B: LESS THAN 8Ω SPEAKERS
CONTROL 8Ω OR MORE A or B: ANY SPEAKERS (A or B: 4-16Ω, A and B: B-16Ω)





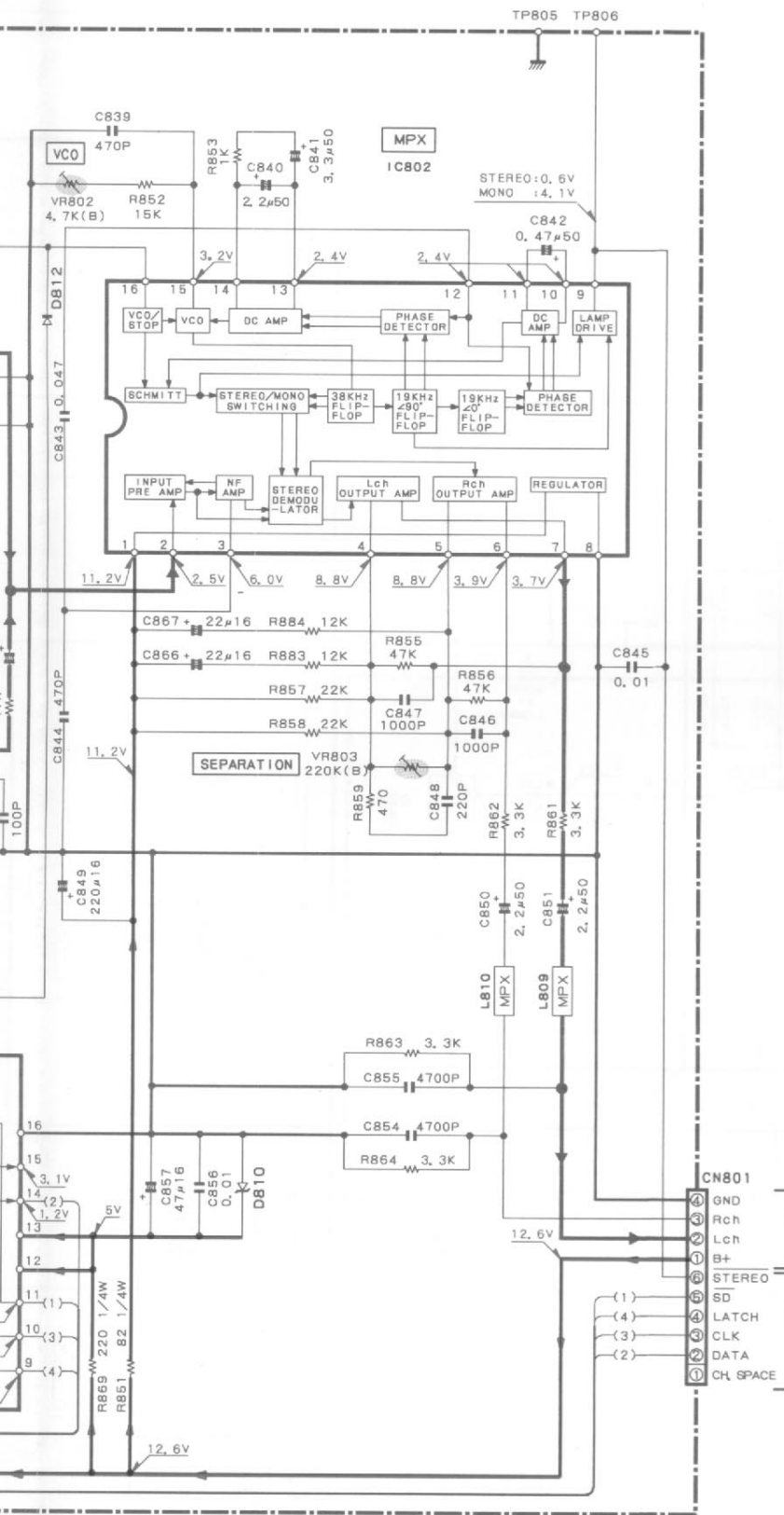


1265
17470
17001

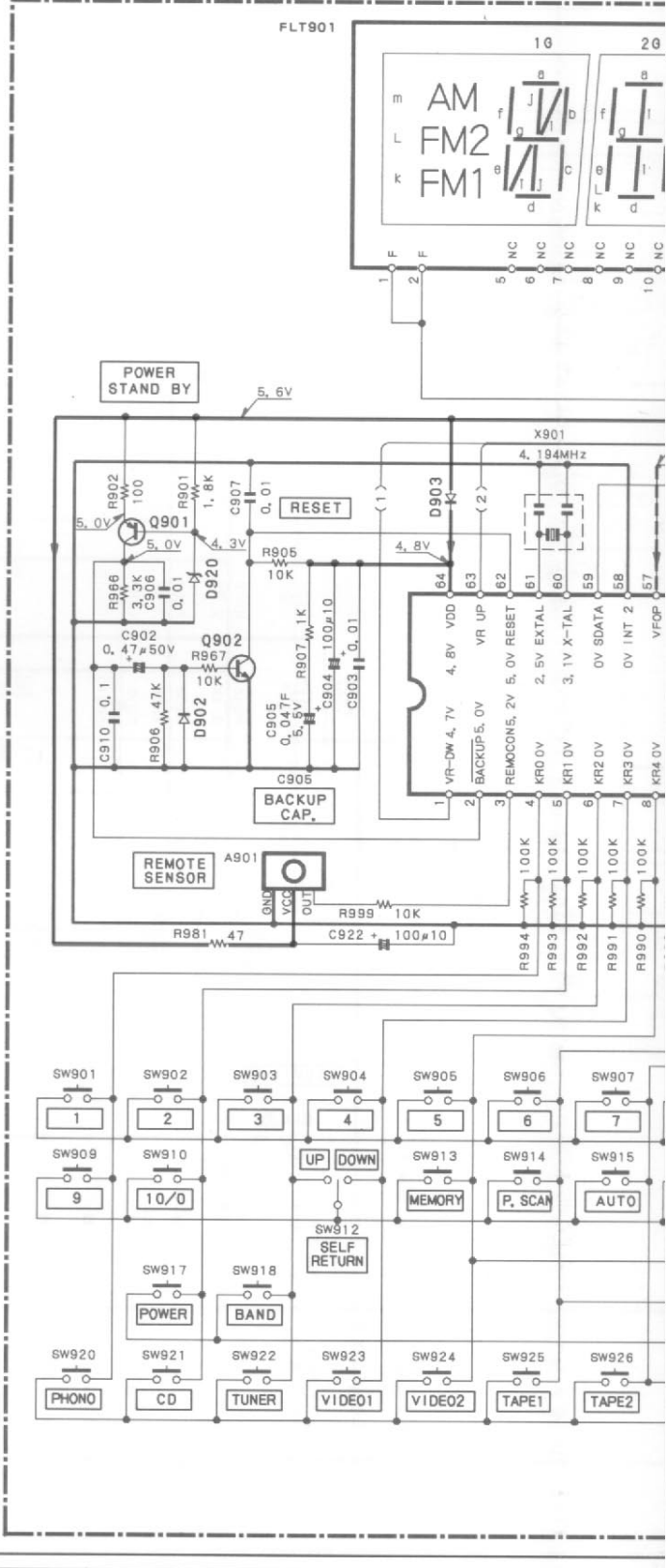
Q801 : 2SC31940
Q803, 807 : 2SC1740S-R
Q804 : 2SC1845F
Q808, 809 : 2SA933S

D801, 802 : 1SS133
804, 811, 812 : 1SS133
D810 : RD5, 1ES(B2)

DC voltages are as measured with a high impedance meter. Values may vary slightly due to variations between components or/and units.



FRONT UNIT WP4177K1



IC901 : CXP5016-531S

D901 : B30-0413-05

Q901 : 2SA933S

D902-904

908-918, 921, 925 : 1SS133

Q902 : 2SC1740S-R

D905 : MTZJ8, 2B

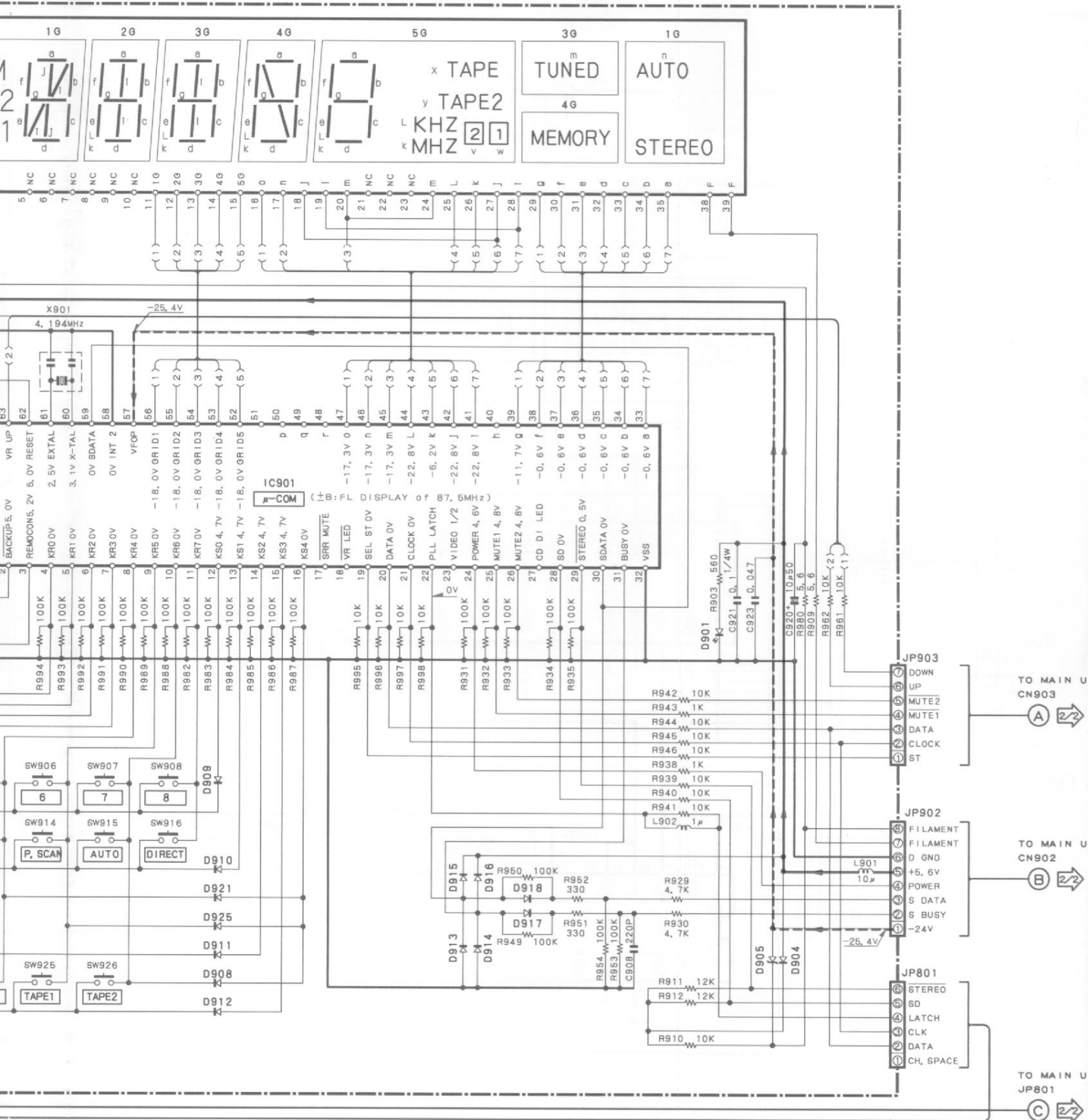
D920 : MTZJ4, 7V

... a high impedance voltmeter.
... between individual instru-

Les tensions c.c. doivent être mesurées avec un voltmètre à haute impédance. Les valeurs peuvent différer légèrement du fait des variations inhérentes aux appareils et aux instruments de mesure individuels.

Die angegebenen Gleichspannungswerte wurden mit einem hochohmigen Spannungsmesser gemessen. Dabei schwanken die Meßwerte aufgrund von Unterschieden zwischen einzelnen Instrumenten oder Geräten u. U. geringfügig.

CAUTION
Components
to parts
reduce
measur
ably ins
returned

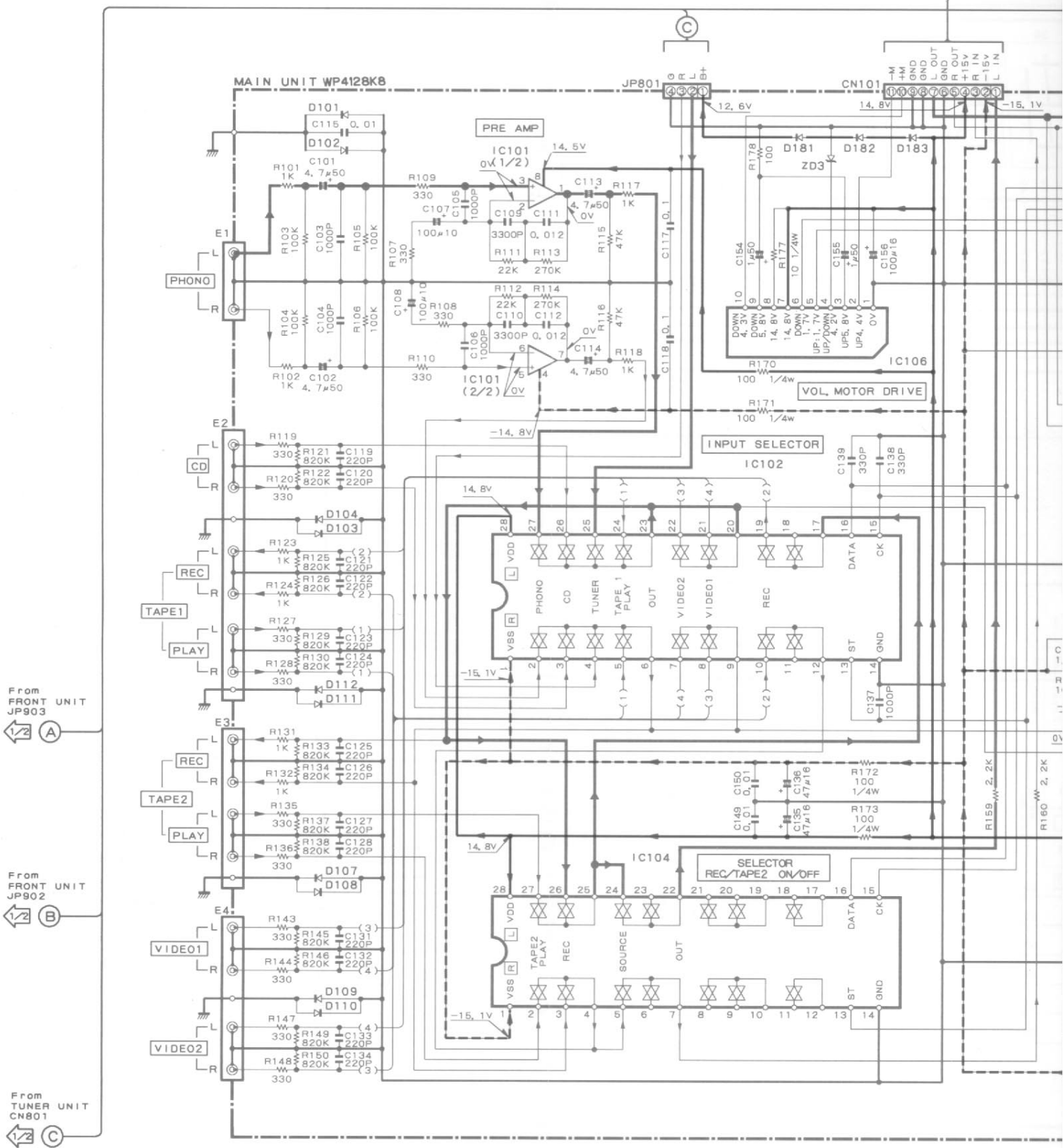


:B30-0413-05
 :1SS133
 :MTZ J8, 2B
 :MTZ J4, 7V

— SIGNAL LINE
 — GND LINE
 — +B LINE
 - - - -B LINE

CAUTION: For continued safety, replace safety critical components only with manufacturer's recommended parts (refer to parts list). Δ indicates safety critical components. To reduce the risk of electric shock, leakage-current or resistance measurements shall be carried out (exposed parts are acceptably insulated from the supply circuit) before the appliance is returned to the customer.



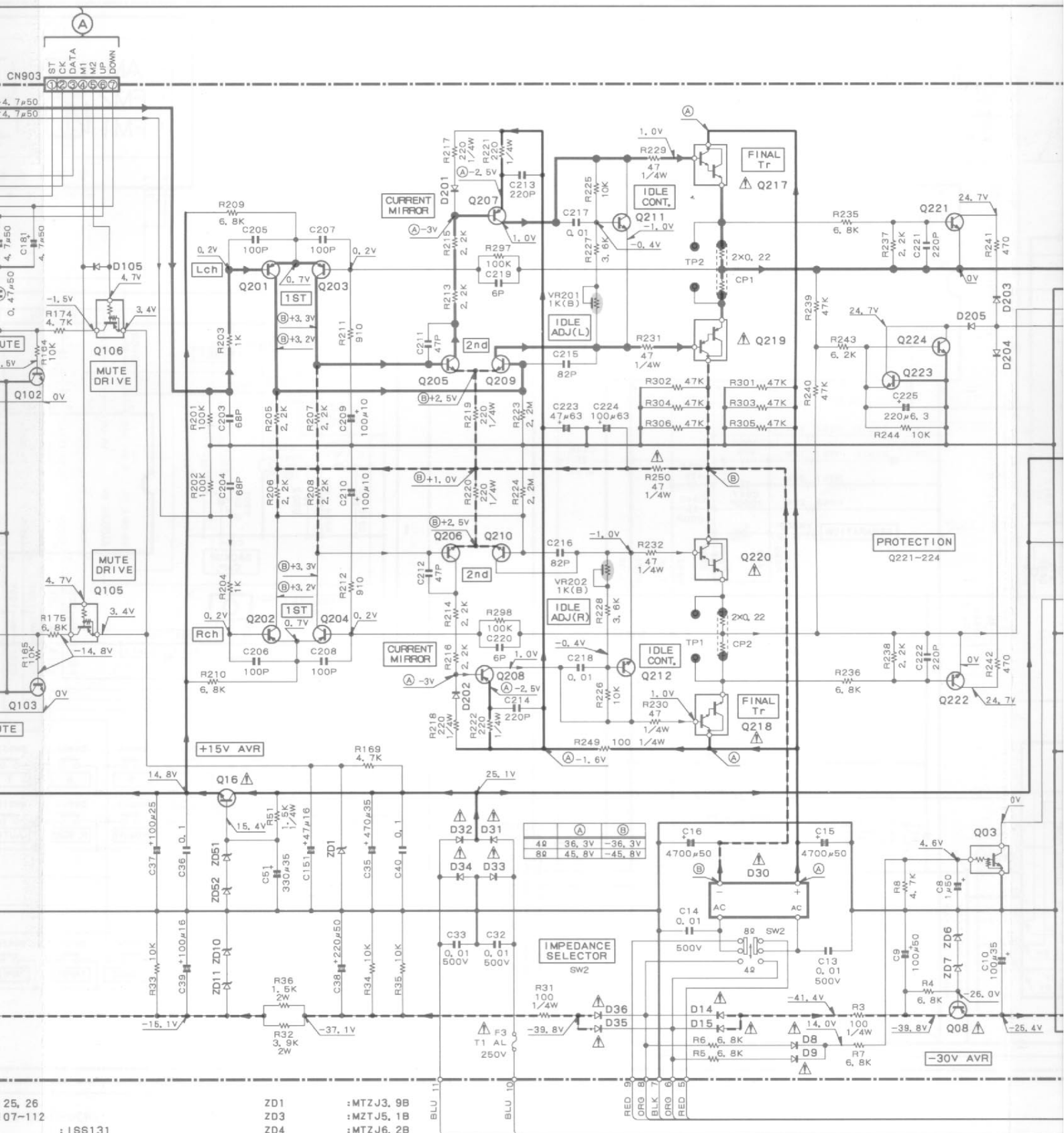


IC101 : NJM4558DD
 IC102 : NJU7313L
 IC104 : NJU7311L
 IC106 : BA6209N

Q01 : 2SC2316Y
 Q02, 03, 07 : DTC114ES
 Q04, 223, 224 : 2SC1740S-R
 Q05, 06 : 2SA933S
 Q08 : 2SA916
 Q16 : 2SD2058Y
 Q101-104 : 2SC2878B

Q105, 106 : DTA114TS
 Q201-204, 207, 208 : 2SA992
 Q205, 206, 209, 210 : 2SC1845F
 221, 222 : 2SC4137V
 Q211, 212 : 2SC4137V
 Q217, 218 : 2SD2389Y
 Q219, 220 : 2SB1559Y

D1
 1
 D2
 1
 D3

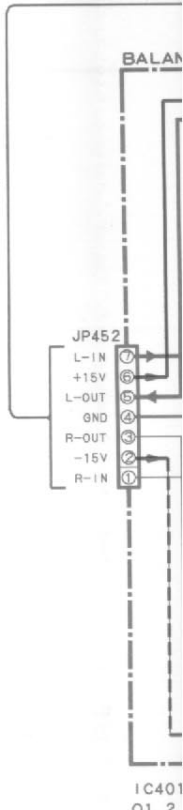
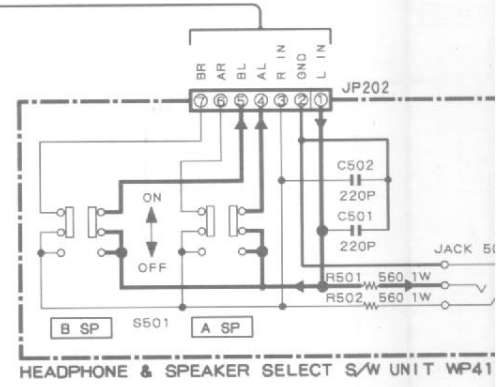
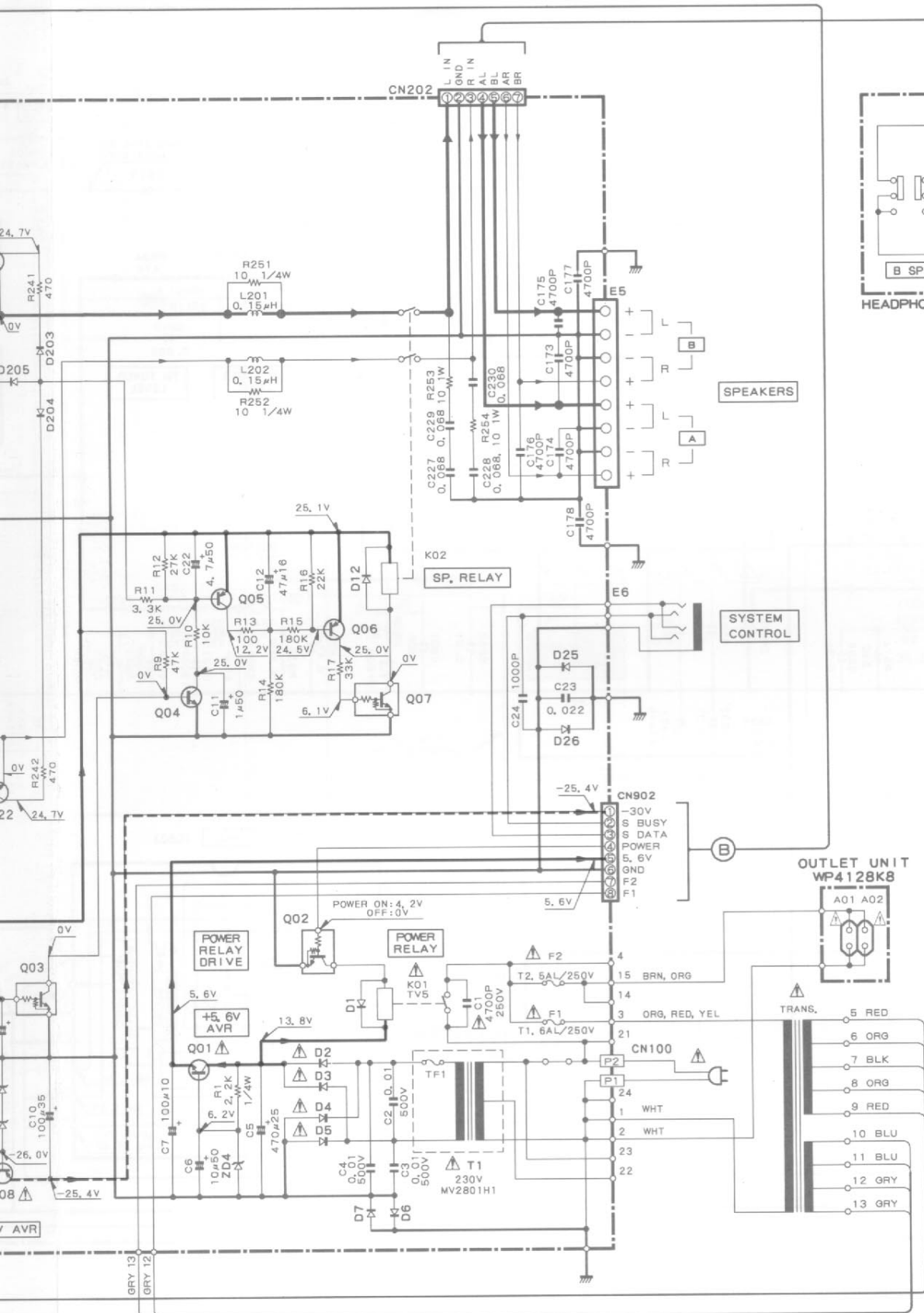


- 25, 26 : ISS131
- 07-112 : IN4002A
- 3, 31-36 : DBF40C or D38B20

- ZD1 : MTZJ3, 9B
- ZD3 : MZTJ5, 1B
- ZD4 : MTZJ6, 2B
- ZD6 : MTZJ15VA
- ZD7 : MTZJ12B
- ZD10, 11, 51 : MTZJ7, 5
- ZD52 : MTZJ8, 2B

	(A)	(B)
4Ω	36, 3V	-36, 3V
8Ω	45, 8V	-45, 8V

DC voltages are as measured with a high impedance meter. Values may vary slightly due to variations between components or/and units.

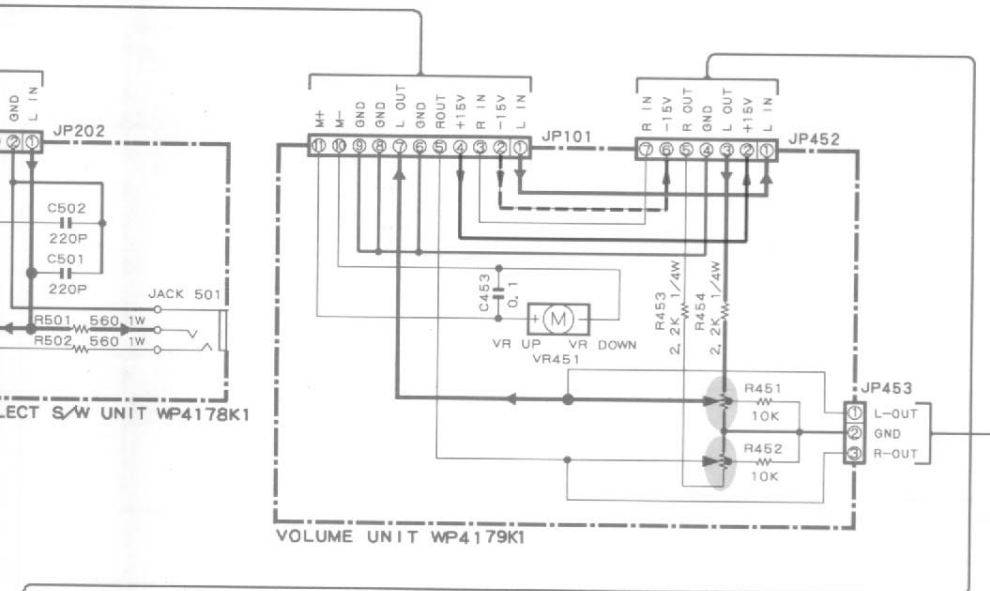


with a high impedance voltmeter. variations between individual instru-

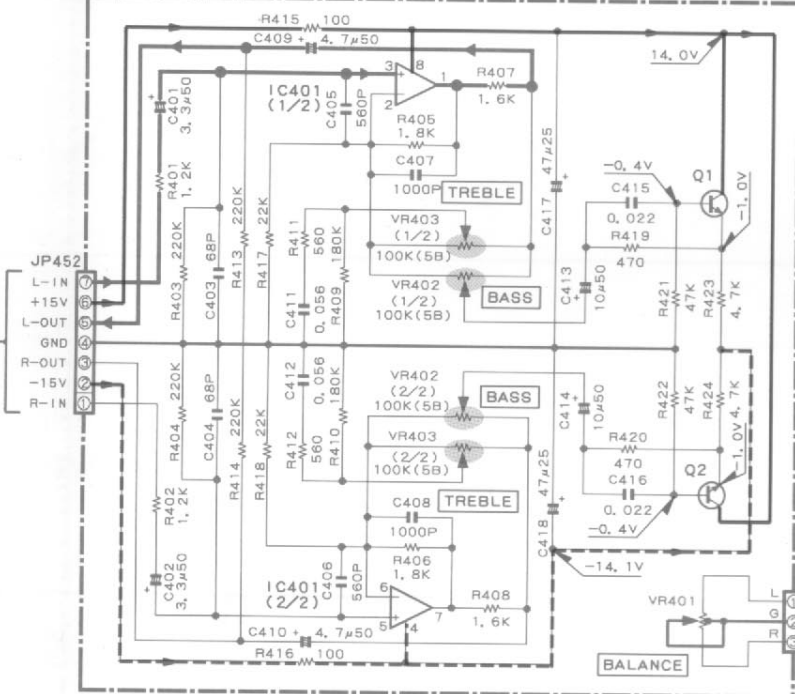
Les tensions c.c. doivent être mesurées avec un voltmètre à haute impédance. Les valeurs peuvent différer légèrement du fait des variations inhérentes aux appareils et aux instruments de mesure individuels.

Die angegebenen Gleichspannungswerte wurden mit einem hochohmigen Spannungsmesser gemessen. Dabei schwanken die Meßwerte aufgrund von Unterschieden zwischen einzelnen Instrumenten oder Geräten u. U. geringfügig.

CAUTION: Do not connect to power supply. Measure only when power is off. Return to factory.



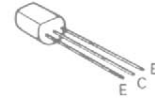
BALANCE & TONE UNIT WP4179K1



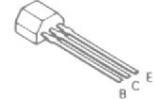
IC401 : NJM4565DD
Q1, 2 : 2SC1740S-R

— SIGNAL LINE
— GND LINE
— +B LINE
- - - -B LINE

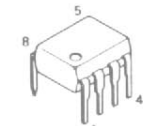
2SA992
2SC2878B



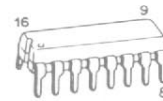
DTC114ES
2SA933S
2SC1740S-R



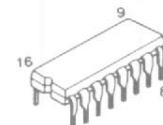
NJM4558DD



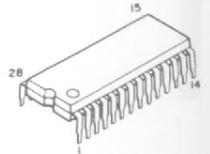
LM7001



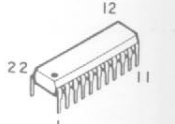
AN7470



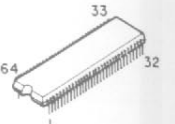
NJU7311L
NJU7313L



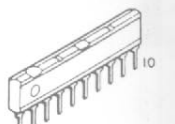
LA1265



CXP5016-531S



BA6209N



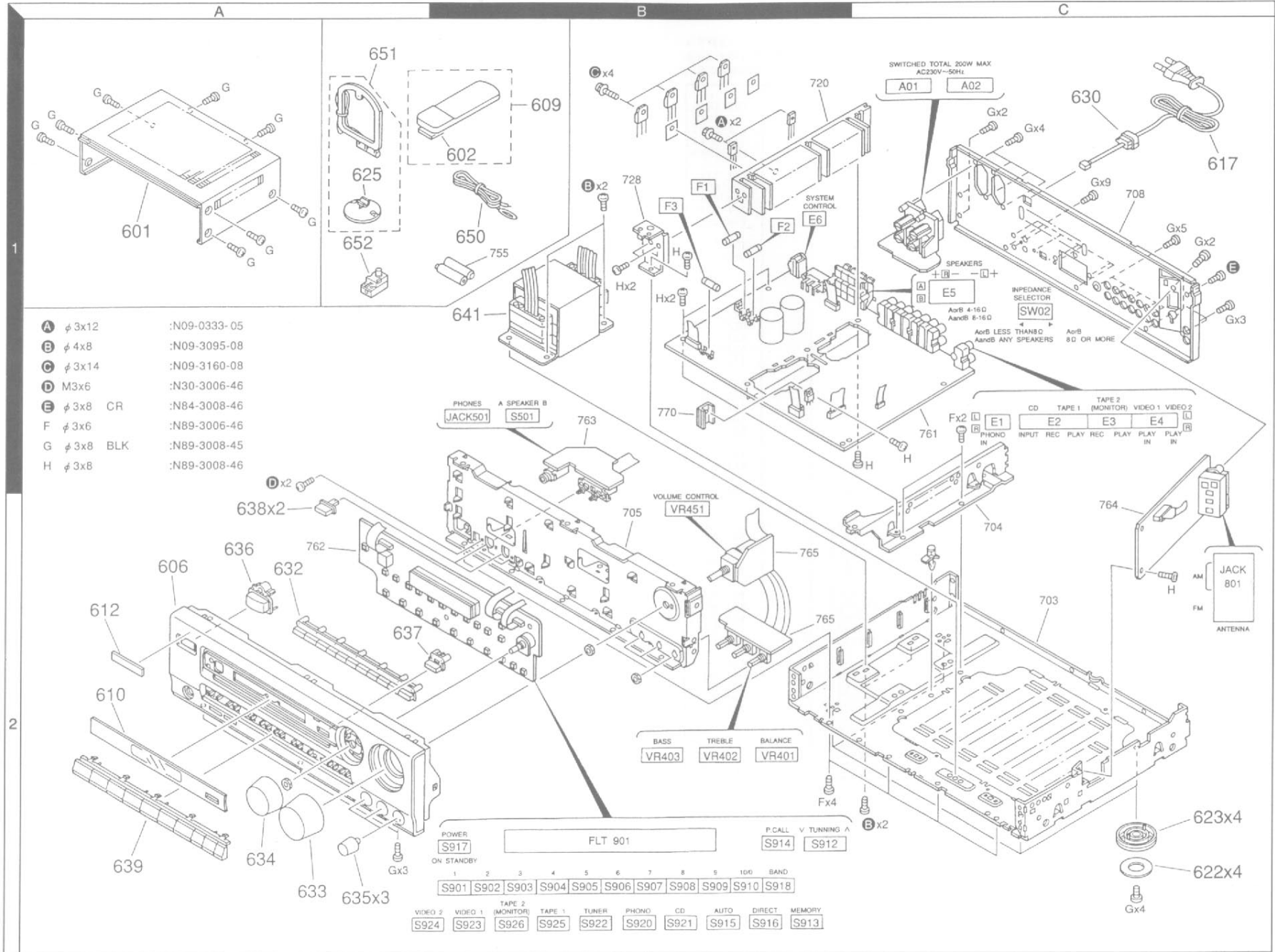
CAUTION: For continued safety, replace safety critical components only with manufacturer's recommended parts (refer to parts list). ⚠ indicates safety critical components. To reduce the risk of electric shock, leakage-current or resistance measurements shall be carried out (exposed parts are acceptably insulated from the supply circuit) before the appliance is returned to the customer.

KR-A3070 [E, G]

KENWOOD

EXPLODED VIEW

KR-A3070 [E, G]



Parts with exploded numbers larger than 700 are not supplied.

KR-A3070 [E, G]

SPECIFICATIONS

Audio section

Rated power output	
(DIN) 1,000 Hz at 8 Ω	50 W + 50 W
at 4 Ω	50 W + 50 W
Total harmonic distortion (1 kHz, 8 Ω)	0.03% at 25 W
Signal to noise ratio	
PHONO (MM)	56 dB (DIN, 50 mW output)
CD, TAPE, VIDEO	57 dB (DIN, 50 mW output)
Input sensitivity / impedance	
PHONO (MM)	2.5 mV / 47 k Ω
CD, TAPE, VIDEO	200 mV / 47k Ω
Tone controls	
BASS	± 10 dB (at 100 Hz)
TREBLE	± 10 dB (at 10 kHz)

FM Tuner section

Tuning frequency range	87.5 MHz~108 MHz
Usable sensitivity (DIN at 75 Ω)	
MONO	1.0 μ V
STEREO	45 μ V
Total harmonic distortion at 1 kHz (DIN)	
MONO	0.2%
STEREO	0.7%
Signal to noise ratio (DIN weighted at 1 kHz)	
MONO	65 dB (65.2 dBf input)
STEREO	58 dB (65.2 dBf input)
Selectivity (DIN \pm 300 kHz)	50 dB
Stereo separation (DIN)	
1 kHz	40 dB
6.3 kHz	33 dB
Frequency response	30 Hz~15 kHz, + 0.5 dB, - 2.0 dB

AM Tuner section

Tuning frequency range	531 kHz ~ 1,602 kHz
Usable sensitivity	12 μ V / (500 μ V / m)
Total harmonic distortion	0.7 %
Signal to noise ratio	
(at 30% mod. 1mV input)	46 dB
Selectivity	30 dB

General

Power consumption	120 W
AC outlet	
SWITCHED	2: (total 200 W max)
Dimensions	W:440 mm
	H:133 mm
	D:350 mm
Weight (net)	6.7 kg

KENWOOD follows a policy of continuous advancements in development. For this reason specifications may be changed without notice.

KENWOOD CORPORATION

14-6, Dogenzaka 1-chome, Shibuya-ku, Tokyo, 150 Japan

KENWOOD SERVICE CORPORATION

P.O. BOX 22745, 2201 East Dominguez St., Long Beach, CA 90801-5745 U.S.A.

KENWOOD ELECTRONICS CANADA INC.

6070 Kestrel Road, Mississauga, Ontario, Canada L5T 1S8

KENWOOD ELECTRONICS LATIN AMERICA S.A.

P.O. BOX 55-2791, Piso 6 Plaza Chase, Cl. 47 y Aquilino de la Guardia, Panama, Republic de Panama

TRIO-KENWOOD U.K. LIMITED

KENWOOD House, Dwight Road, Watford, Herts, WD1 8EB United Kingdom

KENWOOD ELECTRONICS BENELUX N.V.

Mecheissteenweg 418 B-1930 Zaventem, Belgium

KENWOOD ELECTRONICS DEUTSCHLAND GMBH

Rembrucker Str. 15, 63150 Heusenstamm, Germany

TRIO-KENWOOD FRANCE S.A.

13 Boulevard Ney, 75018 Paris, France

KENWOOD ELECTRONICS ITALIA S.p.A.

Via G. Sironi, 7/9 20129 Milano, Italy

KENWOOD ESPAÑA S.A.

Bolivia, 239-08020 Barcelona, Spain

KENWOOD ELECTRONICS AUSTRALIA PTY. LTD. (A.C.N. 001 499 074)

P.O. BOX 504, 8 Figtree Drive, Australia Centre, Homebush, N.S.W. 2140, Australia

KENWOOD & LEE ELECTRONICS, LTD.

Unit 3712-3724, Level 37 Tower 1, Metroplaza, 223 Hing Fong Road, Kwai Fong N.T., Hong Kong

KENWOOD ELECTRONICS SINGAPORE PTE LTD.

No. 1 Genting Lane # 07-00, KENWOOD Building, Singapore, 1334

KENWOOD ELECTRONICS (MALAYSIA) SDN BHD

10 th Floor, Block B, Wisma Semantan, No. 12, Jalan Gelenggang, Bukit Damansara, 50490 Kuala Lumpur, Malaysia

Note:

Component and circuitry are subject to modification to insure best operation under differing local conditions. This manual is based on the Europe (E) standard, and provides information on regional circuit modification through use of alternate schematic diagrams, and information on regional component variations through use of parts list.