

SPECIFICATIONS

Tuner section

Tuning frequency range
 FM 87.5 MHz to 108.0 MHz
 AM 531 kHz to 1602 kHz

Amplifier section

Rated power output
 (IEC) 1kHz at 3.2 Ω 4.8W+4.8W
 Frequency response 20Hz to 20,000Hz

CD player section

Pickup Semiconductor laser
 Frequency response 20Hz to 20,000Hz
 Wow & flutter under the measurable limit

Cassette deck section

Type 4 track 2 channel
 Recording system (dack B) AC bias
 Playback / recording head 1
 Erase head 1
 Playback head 1
 Frequency response 50Hz to 14,000Hz

Speakers section

Type Bass-reflex type
 Units 8.5cm diameter, coaxial two way type (3.2Ω)×2

General

Power source
 DC DC 12V (UM-1, R20×8)
 AC AC 230V (50Hz)

Battery life (approx.)

Batteries type	During CD play (EIAJ)	During tape operation (EIAJ)	Tuner recording operation (EIAJ)
Manganese dry batteries	4 hours	8 hours	6 hours
Alkaline dry batteries	10 hours	17 hours	15 hours

Power consumption 38W
 Maximum dimensions 452 (W)× 182 (H)×280 (D) mm
 Weight 5.0kg (except dry batteries)

Note : We follows a policy of continuous advancements in development. For this reason specifications may be changed without notice.

In compliance with Federal Regulations, following are reproductions of labels on, or inside the product relation to laser product safety.

KENWOOD-Corp. certifies this equipment conforms to DHHS Regulations No. 21 CFR 1040. 10, Chapter 1, Subchapter J.

DANGER : Laser radiation when open and interlock defeated. AVOID DIRECT EXPOSURE TO BEAM.

PMS-F3 is addition of Silver color(S) in Europe(E) and PX(Y) markets. This manual is available for the different parts from the original service manual (B51-5265-00). Please keep and use this with old manual.

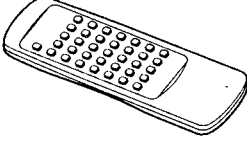
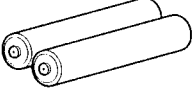
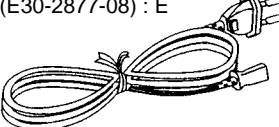
PMS-F3

CONTENTS / ACCESSORIES / CAUTION

Contents

SPECIFICATIONS	Top cover	EXPLODED VIEW	9
CONTENTS / ACCESSORIES / CAUTION	2	PARTS LIST	11
SCHEMATIC DIAGRAM	3		

Accessories

Remote control unit(1) (A70-1135-08)	Batteries (R6/AA).....(2)	Power cord(1) (E30-2865-08) : Y (E30-2866-08) : T (E30-2877-08) : E
		

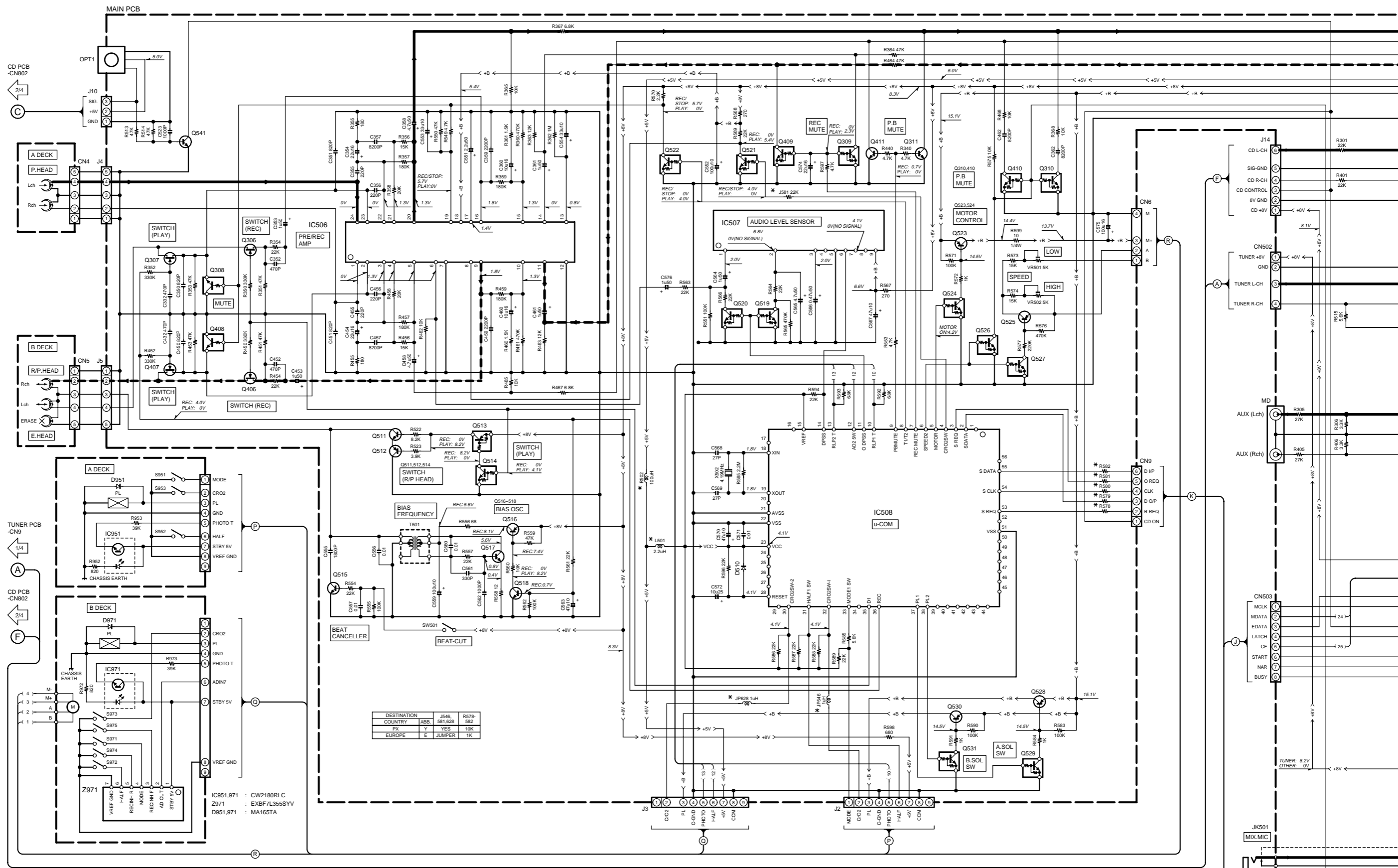
Cautions

Beware of condensation

When water vapor comes into contact with the surface of cold material, water drops are produced. If condensation occurs, correct operation may not be possible, or the unit may not function correctly. This is not a malfunction, however, and the unit should be dried. (To do this, turn the POWER switch ON and leave the unit for several hours.)

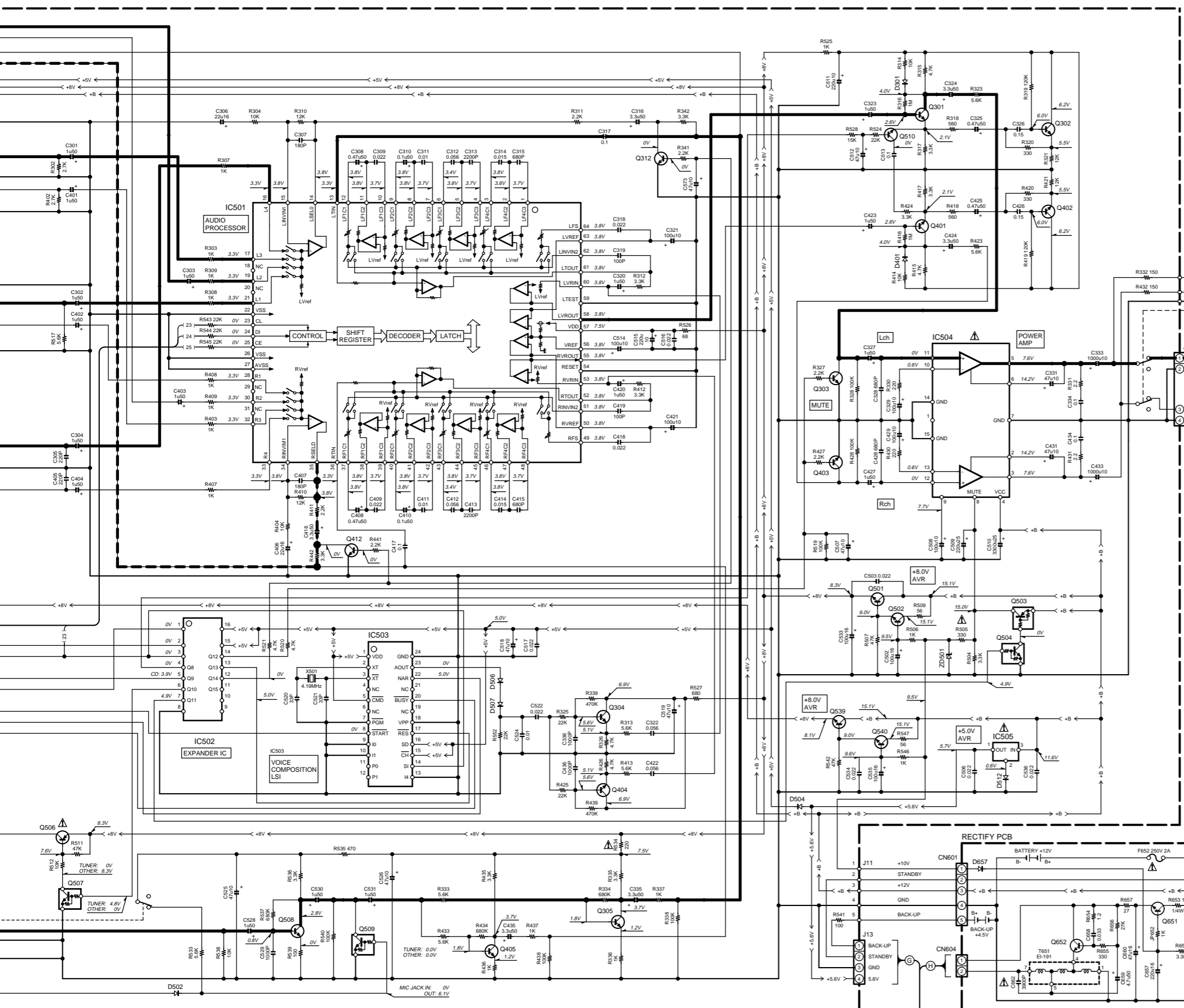
Be especially careful in the following conditions:

- When the unit is brought from a cold place to a warm place, and there is a large temperature difference.
- When a heater starts operating.
- When the unit is brought from an air-conditioned place to a place of high temperature with high humidity.
- When there is a large difference between the internal temperature of the unit and the ambient temperature, or in conditions where condensation occurs easily.

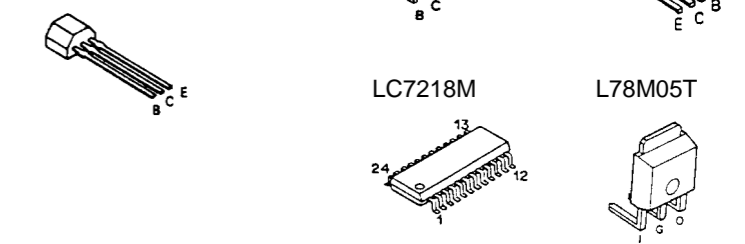


CAUTION: For continued safety, replace safety critical components only with manufacturer's recommended parts (refer to parts list). indicates safety critical components. For continued protection against risk of fire, replace only with same type and rating fuse(s). To reduce the risk of electric shock, leakage-current or resistance measurements shall be carried out (exposed parts are acceptably insulated from the supply circuit) before the appliance is returned to the customer.

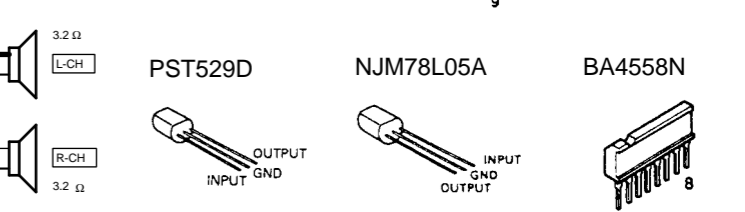
The DC voltage is an actual reading measured with a high impedance type voltmeter. The measurement value may vary depending on the measuring instruments used or on the product. Refer to the voltage during PLAY unless otherwise specified; The value shown in () is the voltage measured at the moment of STOP.



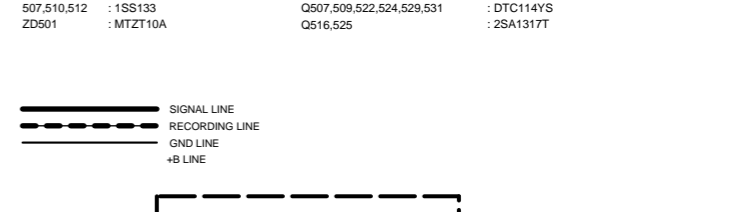
- DTA114YS
- DTA124ES
- DTC114ES
- DTC114TS
- DTC124ES



- 2SC2786
- LC7218M
- L78M05T



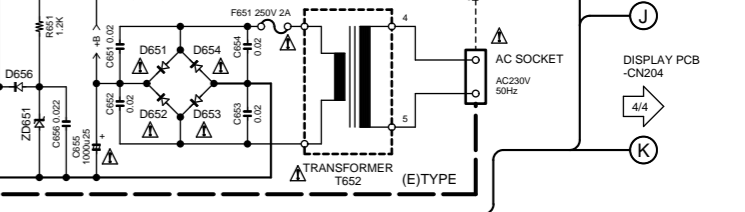
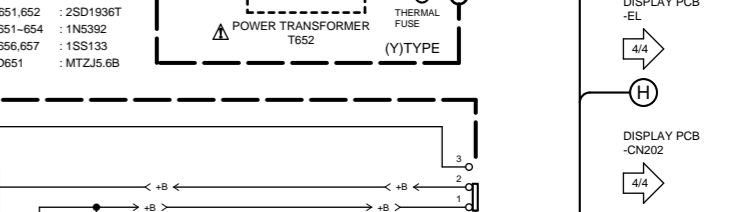
- 2SD2012
- TA7358AP
- MC14094B
- PST529D
- NJM78L05A
- BA4558N



MAIN PCB
 IC501 : LC75394NE
 IC502 : MC14094B
 IC503 : MSM6654A-512GS
 IC504 : TA8229K
 IC505 : NJM78L05A
 IC506 : TA8189N
 IC507 : BA335
 IC508 : M37471M4-655FP

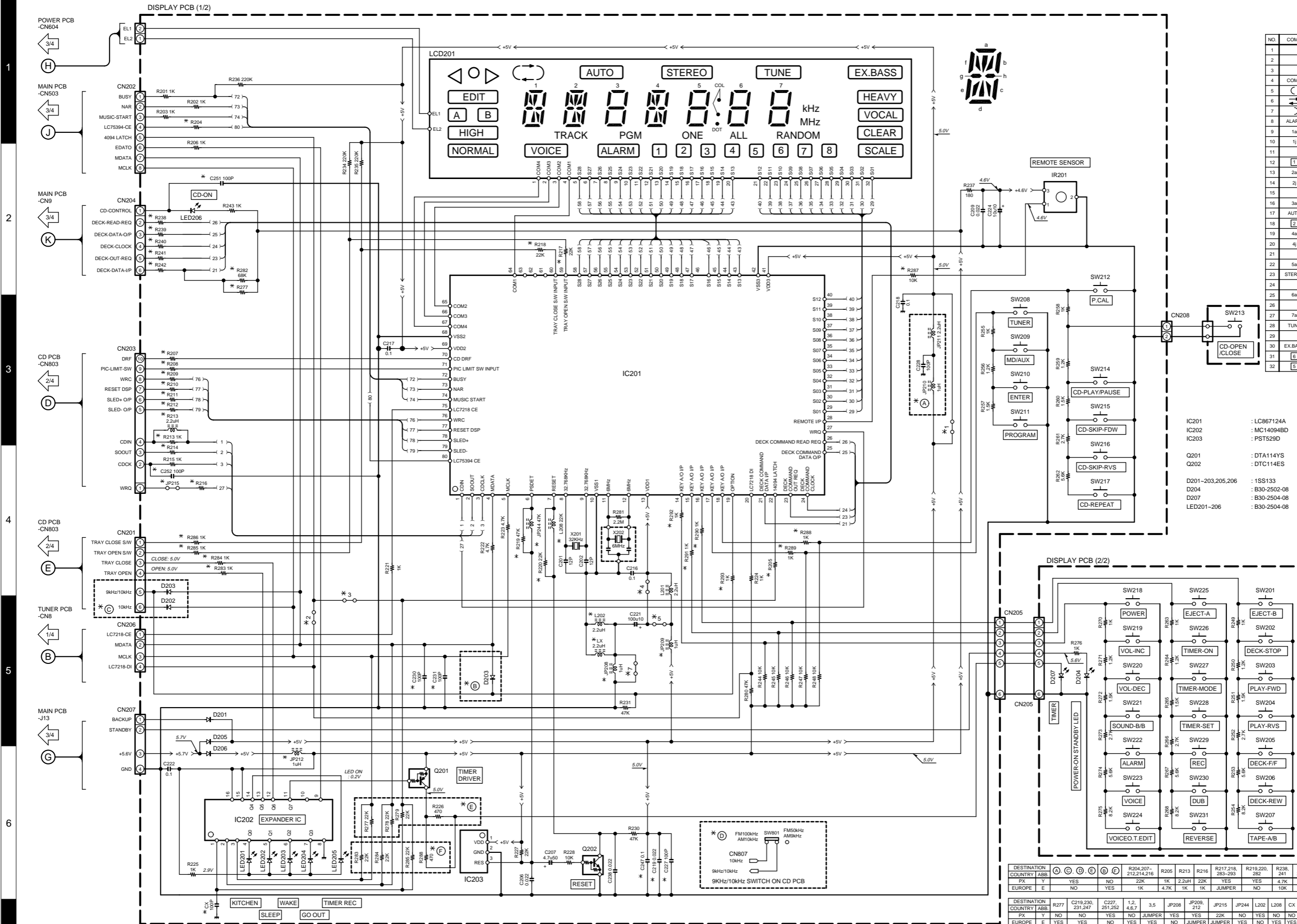
D301,401,502,504,506, 507,510,512 : 1SS133
ZD501 : MTZT10A

Q301,302,304,305,311,401,402,404,405,411,502,508, 510-512,515,518,540,541 : 2SC3330(S,T)
Q303,312,403,412,517 : 2SD1936T
Q306,307,406,407 : 2SJ164R
Q308,309,408,409 : DTC114TS
Q310,410,504,514,519-521,526,527 : DTC124ES
Q501,539 : 2SD2012
Q503,513 : DTA124ES
Q506,523,528,530 : 2SB926T
Q507,509,522,524,529,531 : DTC114YS
Q516,525 : 2SA1317T



PMS-F3(E, Y) (3/4)
 Y39-2502-71
PMS-F3
KENWOOD





NO.	COM.1	COM.2	COM.3	COM.4
1				COM.4
2			COM.3	
3		COM.2		
4	COM.1			
5			EDIT	NORMAL
6			A	HIGH
7			B	
8	ALARM	1f	1e	VOICE
9	1a	1i	1g	1m
10	1j	1h	1i	1d
11		1b	1c	1d
12	1	2f	2e	TRACK
13	2a	2i	2g	2m
14	2j	2k	2h	2i
15		2b	2c	2d
16	3a	3f	3g	3e
17	AUTO	3b	3c	3d
18	2	4f	4a	PGM
19	4a	4i	4g	4m
20	4j	4h	4i	
21		4b	4c	4d
22	5a	5f	5g	5e
23	STEREO	5b	5c	5d
24		COL	DOT	ALL
25	6a	6f	6g	6e
26		6b	6c	6d
27	7a	7i	7g	7e
28	TUNE	7b	7c	7d
29		HEAVY	MHz	RANDOM
30	EX.BASS	HEAVY	VOCAL	CLEAR
31	6	7	8	SCALE
32	5	4	3	ONE

- IC201 : LC867124A
- IC202 : MC14094BD
- IC203 : PST529D
- Q201 : DT114YS
- Q202 : DTC114ES
- D201-203,205,206 : 1SS133
- D204 : B30-2502-08
- D207 : B30-2504-08
- LED201-206 : B30-2504-08

DESTINATION COUNTRY ABB.	R204	R205	R206	R207	R208	R209	R210	R211	R212	R213	R214	R215	R216	R217	R218	R219	R220	R221	R222	R223	R224	R225	R226	R227	R228	R229	R230
PX	YES	NO	22K	1K	2.2uH	22K	YES	YES	22K	YES	22K	NO	NO	NO	NO	NO	NO	NO	NO	NO	NO	NO	NO	NO	NO	NO	NO
EUROPE	E	NO	YES	1K	4.7K	1K	1K	JUMPER	NO	10K	1K																

CAUTION: For continued safety, replace safety critical components only with manufacturer's recommended parts (refer to parts list). Δ indicates safety critical components. For continued protection against risk of fire, replace only with same type and rating fuse(s). To reduce the risk of electric shock, leakage-current or resistance measurements shall be carried out (exposed parts are acceptably insulated from the supply circuit) before the appliance is returned to the customer.

The DC voltage is an actual reading measured with a high impedance type voltmeter. The measurement value may vary depending on the measuring instruments used or on the product. Refer to the voltage during PLAY unless otherwise specified; The value shown in () is the voltage measured at the moment of STOP.

PMS-F3(E,Y) (4/4)

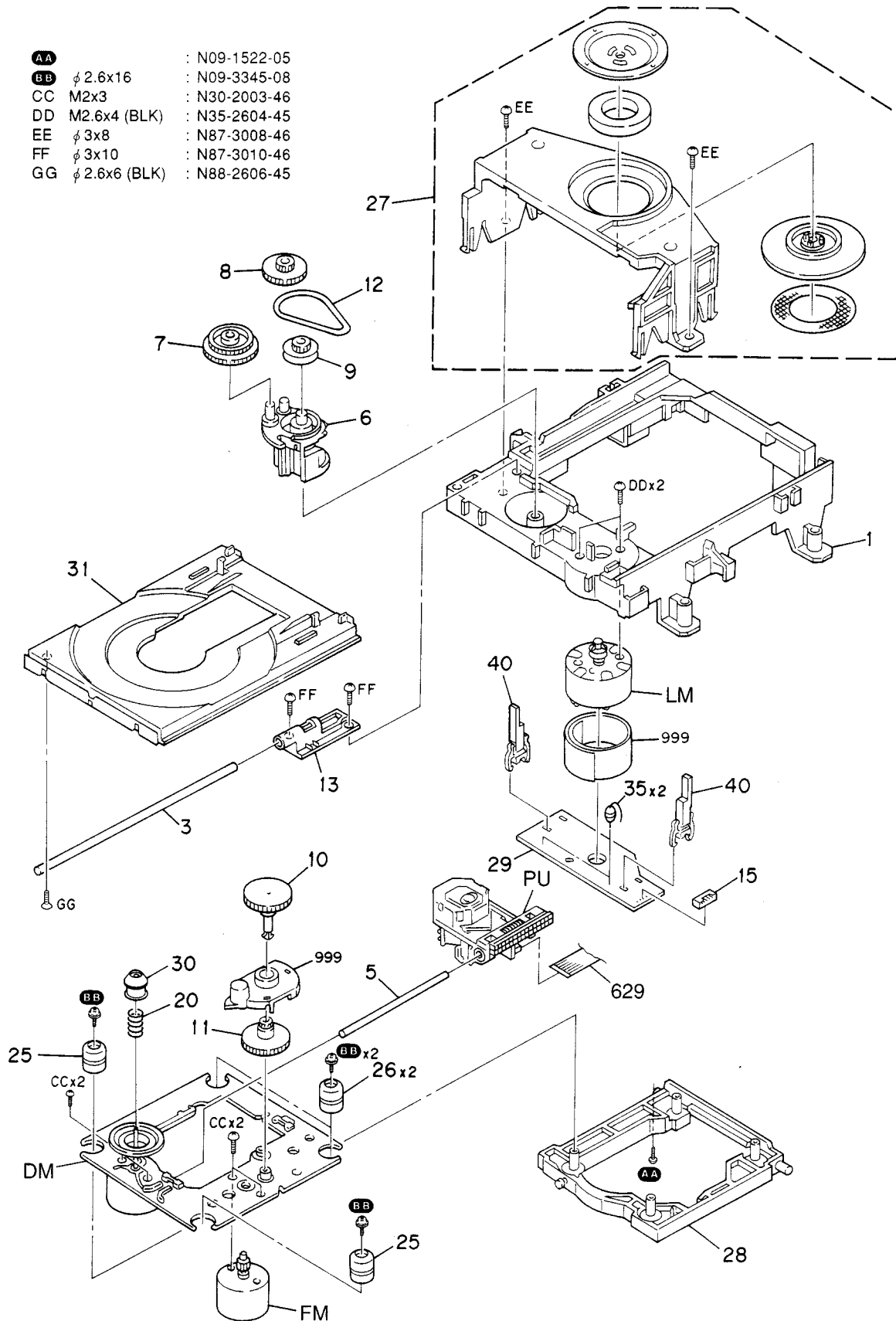
Y39-2502-71



PMS-F3

EXPLODED VIEW (CD MECHANISM)

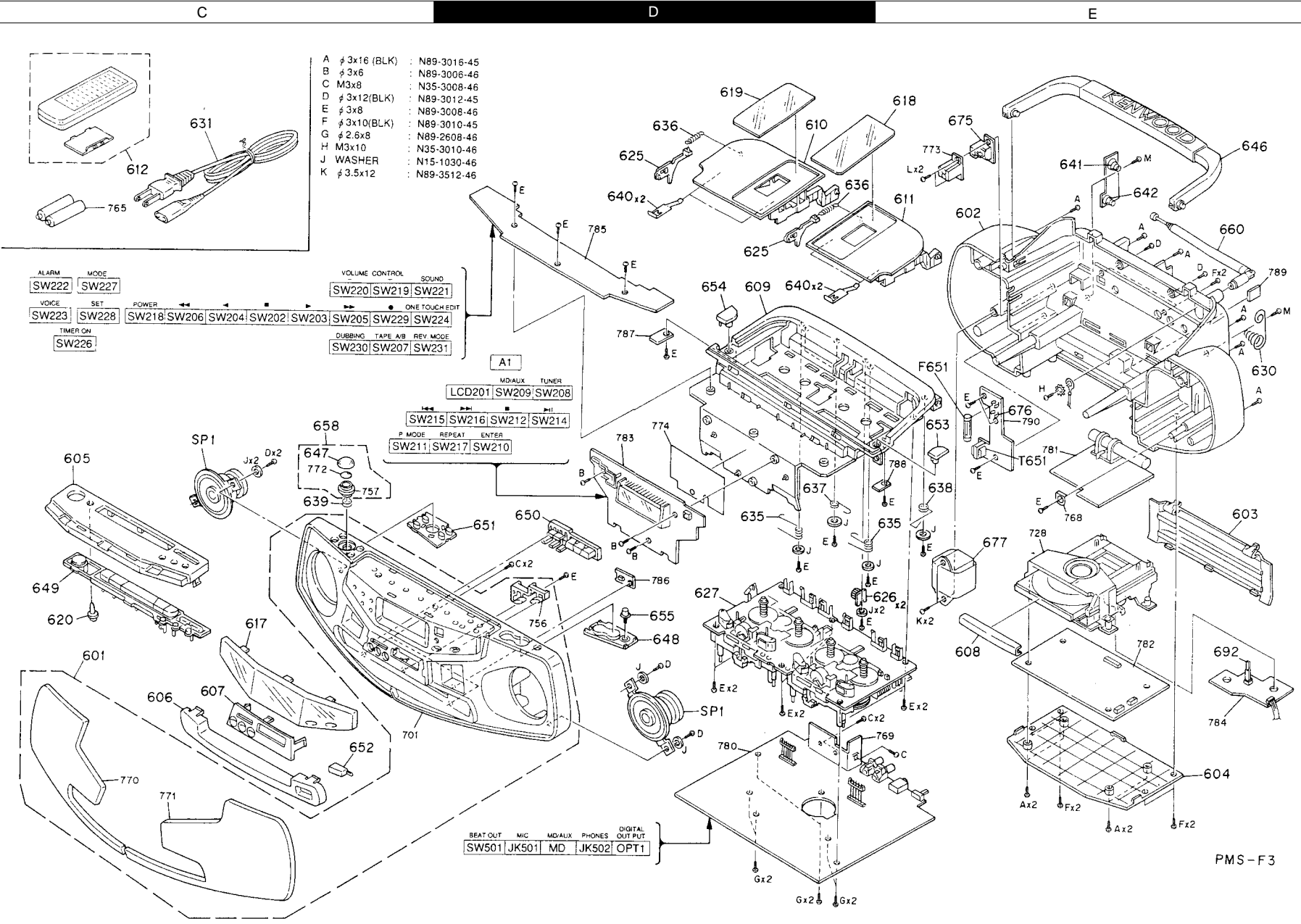
- | | | |
|----|---------------|---------------|
| AA | : | N09-1522-05 |
| BB | φ 2.6x16 | : N09-3345-08 |
| CC | M2x3 | : N30-2003-46 |
| DD | M2.6x4 (BLK) | : N35-2604-45 |
| EE | φ 3x8 | : N87-3008-46 |
| FF | φ 3x10 | : N87-3010-46 |
| GG | φ 2.6x6 (BLK) | : N88-2606-45 |



Parts with exploded numbers larger than 700 are not supplied.

EXPLODED VIEW (UNIT)

PMS-F3



* New Parts
Parts without **Parts No.** are not supplied.
Les articles non mentionnés dans le **Parts No.** ne sont pas fournis.
Teile ohne **Parts No.** werden nicht geliefert.

1

Ref. No	Add-ress	New Parts	Parts No.	Description	Desti-nation	Re-marks
PMS-F3 G: Grey, L: Blue, S: Silver						
601	2C	*	A60-1153-08	PANEL ASSY	G	
601	2C	*	A60-1154-08	PANEL ASSY	L	
601	2C	*	A60-1337-08	PANEL ASSY	S	
602	1E	*	A02-1345-08	PLASTIC CABINET/REAR	G	
602	1E	*	A02-1347-08	PLASTIC CABINET/REAR	L	
602	1E	*	A02-1381-08	PLASTIC CABINET/REAR	SE	
602	1E	*	A02-2807-08	PLASTIC CABINET/REAR	SY	
603	2E	*	A09-0372-08	BATTERY COVER	G	
603	2E	*	A09-0373-08	BATTERY COVER	L	
603	2E	*	A09-0390-08	BATTERY COVER	S	
604	2E	*	A11-1120-08	SUB CHASSIS	G	
604	2E	*	A11-1121-08	SUB CHASSIS	L	
604	2E	*	A11-1138-08	SUB CHASSIS	SE	
604	2E	*	A11-1139-08	SUB CHASSIS	SY	
605	1C	*	A22-1760-08	SUB PANEL(CASSETTE)	G	
605	1C	*	A22-1764-08	SUB PANEL(CASSETTE)	L	
605	1C	*	A22-1794-08	SUB PANEL(CASSETTE)	S	
606	2C	*	A22-1761-08	SUB PANEL(CD)	GL	
606	2C	*	A22-1801-08	SUB PANEL(CD)	S	
607	2C	*	A22-1762-08	SUB PANEL(ESCUTCHEON)	GL	
607	2C	*	A22-1797-08	SUB PANEL(ESCUTCHEON)	S	
608	2E	*	A22-1763-08	SUB PANEL(CD COVER)	G	
609	1D	*	A53-1997-08	CASSETTE HOLDER	L	
609	1D	*	A53-2001-08	CASSETTE HOLDER	S	
609	1D	*	A53-2027-08	CASSETTE HOLDER	S	
610	1D	*	A53-1999-08	CASSETTE LID L	G	
610	1D	*	A53-2003-08	CASSETTE LID L	L	
610	1D	*	A53-2031-08	CASSETTE LID L	S	
611	1E	*	A53-1998-08	CASSETTE LID R	GL	
611	1E	*	A53-2002-08	CASSETTE LID R	L	
611	1E	*	A53-2029-08	CASSETTE LID R	S	
612	1C	*	A70-1135-08	REMOCON ASSY		
617	2C	*	B03-2996-08	DRESSING PLATE(DISPLAY LENS)		
618	1E	*	B03-2997-08	DRESSING PLATE(CASS LENS R)		
619	1D	*	B03-2998-08	DRESSING PLATE(CASS LENS L)		
620	2C	*	B03-2999-08	DRESSING PLATE(LED LENS)		
-			B46-0100-08	WARRANTY CARD		
-		*	B60-2965-08	INSTRUCTION MANUAL(ENGLISH)		
-		*	B60-2969-08	INSTRUCTION MANUAL(DUTCH)		
-		*	B60-3654-08	INSTRUCTION MANUAL(ITALIAN)		
-		*	B60-3655-08	INSTRUCTION MANUAL(SPANISH)		
-		*	B60-3656-08	INSTRUCTION MANUAL(FRENCH)		
-		*	B60-3657-08	INSTRUCTION MANUAL(PORTUGAL)		
625	1D	*	D32-0353-08	STOPPER		
626	2E	*	D39-0330-08	DAMPER B		
627	2D	*	D40-1549-08	CASSETTE MECHANISM ASSY		
629	2B	*	E35-1573-05	FLAT CABLE (16P)		
630	1E	*	E23-1739-08	TERMINAL		
631	1C	*	E30-2865-08	AC CORD	Y	
631	1C	*	E30-2866-08	AC CORD	T	
631	1C	*	E30-2877-08	AC CORD	E	

L : Scandinavia K : USA P : Canada R : Mexico
Y : PX(Far East, Hawaii) T : Europe E : Europe G : Germany
Y : AAFES(Europe) X : Australia M : Other Areas

⚠ indicates safety critical components.

* New Parts
Parts without **Parts No.** are not supplied.
Les articles non mentionnés dans le **Parts No.** ne sont pas fournis.
Teile ohne **Parts No.** werden nicht geliefert.

2

Ref. No	Add-ress	New Parts	Parts No.	Description	Desti-nation	Re-marks
635	2D,2E	*	G01-3984-08	TORSION COIL SPRING		
636	1D	*	G01-3985-08	TORSION COIL SPRING		
637	2D	*	G01-3986-08	TORSION COIL SPRING		
638	2E	*	G01-3987-08	TORSION COIL SPRING		
639	2C	*	G01-3989-08	COMPRESSION SPRING		
640	1D	*	G02-1622-08	FLAT SPRING		
641	1E	*	G09-0661-08	FORMED SPRING		
642	1E	*	G09-0662-08	FORMED SPRING		
-		*	H10-7302-08	POLYSTYRENE FOAMED FIXTURE R		
-		*	H10-7303-08	POLYSTYRENE FOAMED FIXTURE L		
-		*	H25-1607-08	PROTECTION SHEET		
-		*	H50-2182-08	ITEM CARTON CASE	G	
-		*	H50-2184-08	ITEM CARTON CASE	L	
-		*	H50-2774-08	ITEM CARTON CASE	S	
646	1E	*	K01-0091-08	HANDLE	G	
646	1E	*	K01-0092-08	HANDLE	L	
646	1E	*	K01-0093-08	HANDLE	S	
647	1C	*	K29-6650-08	KEY TOP		
648	2D	*	K29-6651-08	KNOB (VOLUME)	GL	
648	2D	*	K29-6943-08	KNOB (VOLUME)	S	
649	2C	*	K29-6652-08	KNOB (CASS FUNCTION KEY)	GL	
649	2C	*	K29-6944-08	KNOB (CASS FUNCTION KEY)	S	
650	2D	*	K29-6653-08	KNOB (CD FUNCTION KEY)	GL	
650	2D	*	K29-6940-08	KNOB (CD FUNCTION KEY)	S	
651	2D	*	K29-6654-08	KNOB (CLOCK FUNCTION KEY)	GL	
651	2D	*	K29-6941-08	KNOB (CLOCK FUNCTION KEY)	S	
652	2C	*	K29-6655-08	KNOB (CD OPEN/CLOSE)		
653	1E	*	K29-6656-08	KNOB (CASS DOOR OPEN KEY R)	GL	
653	1E	*	K29-6891-08	KNOB (CASS DOOR OPEN KEY R)	S	
654	1D	*	K29-6657-08	KNOB (CASS DOOR OPEN KEY L)	GL	
654	1D	*	K29-6893-08	KNOB (CASS DOOR OPEN KEY L)	S	
655	2D	*	K29-6658-08	KNOB (SOUND KEY)	GL	
655	2D	*	K29-6887-08	KNOB (SOUND KEY)	S	
658	1C	*	K29-6686-08	KNOB ASSY(TIMER)	GL	
658	1C	*	K29-6942-08	KNOB ASSY(TIMER)	S	
660	1E	*	T90-0831-08	ROD ANTENNA		
SP1	1C,2D	*	T15-0012-08	FULLRANGE		
POWER SUPPLY						
C651-654		*	CK45FB1H203K	CERAMIC	0.020UF	K
C655		*	CE04KW1E102M	ELECTRO	1000UF	25WV
C656		*	C91-0684-05	CERAMIC	0.022UF	K
C657		*	CE04KW1C221M	ELECTRO	220UF	16WV
C658		*	CQ92FM1H333J	MYLAR	0.033UF	J
C659		*	CE04KW1H4R7M	ELECTRO	4.7UF	50WV
C660		*	CE04KW1C470M	ELECTRO	47UF	16WV
C662		*	CQ92FM1H392J	MYLAR	3900PF	J
675	1E	*	E03-0352-08	AC SOCKET		E
675	1E	*	E03-0359-08	AC SOCKET		Y
676	1E	*	J13-0041-05	FUSE HOLDER		
-		*	E35-1785-08	WIRING HARNESS (CD OPEN KEY)		
-		*	E35-1786-08	WIRING HARNESS (TO EL)		

L : Scandinavia K : USA P : Canada R : Mexico
Y : PX(Far East, Hawaii) T : Europe E : Europe G : Germany
Y : AAFES(Europe) X : Australia M : Other Areas

⚠ indicates safety critical components.

PARTS LIST

PMS-F3

1

* New Parts
Parts without **Parts No.** are not supplied.
Les articles non mentionnés dans le **Parts No.** ne sont pas fournis.
Teile ohne **Parts No.** werden nicht geliefert.

3

Ref. No	Add-ress	New Parts	Parts No.	Description	Desti-nation	Re-marks
CN601		*	E40-8087-08	PIN ASSY		
Δ F651			F06-2021-05	FUSE 2A,250V		
Δ F652			F53-0160-08	FUSE 2A,125V		
Δ T651		*	L07-2350-08	POWER TRANSFORMER	E	
Δ T652		*	L07-2367-08	POWER TRANSFORMER	Y	
Δ T652		*	L07-2541-08	POWER TRANSFORMER		
R653			R92-0219-05	FUSE RESIST 10 G 1/4W		
SW601			S62-0067-08	SILDE SWITCH VOLTAGE	Y	
D651-654			1N5392	DIODE		
D656,657			1SS133	DIODE		
Q651,652		*	2SD1936T	TRANSISTOR		
TUNER						
C1			C91-0729-05	CERAMIC 22PF J		
C2			C91-0757-05	CERAMIC 1000PF K		
C5			C91-0718-05	CERAMIC 5.6PF K		
C6			C91-0745-05	CERAMIC 100PF K		
C7			C91-0751-05	CERAMIC 330PF K		
C9			C91-0721-05	CERAMIC 10PF J		
C10 ,11		*	CK45FB1E103K	CERAMIC 0.010UF K		
C12			C91-0757-05	CERAMIC 1000PF K		
C13			C91-0725-05	CERAMIC 15PF J		
C14			C91-0727-05	CERAMIC 18PF J		
C15			C91-0713-05	CERAMIC 2.2PF K		
C16			C91-0745-05	CERAMIC 100PF K		
C17 ,18		*	CK45FB1E103K	CERAMIC 0.010UF K		
C19			CK45FB1E223K	CERAMIC 0.022UF K		
C21 ,22		*	CK45FB1E103K	CERAMIC 0.010UF K		
C23			C91-0745-05	CERAMIC 100PF K		
C24			CQ92FM1H223J	MYLAR 0.022UF J		
C25			CE04KW1H4R7M	ELECTRO 4.7UF 50WV		
C27			CK45FB1E223K	CERAMIC 0.022UF K		
C28			C91-0713-05	CERAMIC 2.2PF K		
C29			C91-0751-05	CERAMIC 330PF K		
C30 ,31			CE04KW1H010M	ELECTRO 1.0UF 50WV		
C32		*	CM93BF1H683K	MICA 0.068UF K		
C33		*	CM93BF1H823J	MICA 0.082UF J		
C34		*	CM93BF1H562K	MICA 5600PF K		
C35		*	CM93BF1H823J	MICA 0.082UF J		
C36			CK45FB1E223K	CERAMIC 0.022UF K		
C37			CE04KW1A101M	ELECTRO 100UF 10WV		
C38			CK45FB1H473K	CERAMIC 0.047UF K		
C39			CK45FB1H104Z	CERAMIC 0.10UF Z		
C40			C91-0745-05	CERAMIC 100PF K		
C41		*	CK45FB1E103K	CERAMIC 0.010UF K		
C42			CE04KW1HR47M	ELECTRO 0.47UF 50WV		
C43		*	CM93BF1H332K	MICA 3300PF K		
C44			C91-0757-05	CERAMIC 1000PF K		
C45			CK45FB1H473K	CERAMIC 0.047UF K		
C46			C91-0723-05	CERAMIC 12PF J		
C47		*	CQ92FM1H391J	MYLAR 390PF J		
C48			C91-0718-05	CERAMIC 5.6PF K		
C49			CK45FB1H104Z	CERAMIC 0.10UF Z		

L : Scandinavia K : USA P : Canada R : Mexico
Y : PX(Far East, Hawaii) T : Europe E : Europe G : Germany
Y : AAFES(Europe) X : Australia M : Other Areas

Δ indicates safety critical components.

* New Parts
Parts without **Parts No.** are not supplied.
Les articles non mentionnés dans le **Parts No.** ne sont pas fournis.
Teile ohne **Parts No.** werden nicht geliefert.

4

Ref. No	Add-ress	New Parts	Parts No.	Description	Desti-nation	Re-marks
C52 ,53			C91-0723-05	CERAMIC 12PF J		
C69 ,70			CQ92FM1H153J	MYLAR 0.015UF J		
C71 ,72			CE04KW1HR47M	ELECTRO 0.47UF 50WV		
C77			C91-0757-05	CERAMIC 1000PF K		
C80			C91-0751-05	CERAMIC 330PF K		
C84			CK45FB1H473K	CERAMIC 0.047UF K		
C85 ,86			C91-0757-05	CERAMIC 1000PF K		
C87 ,88		*	CK45FB1E103K	CERAMIC 0.010UF K		
C91			C91-0727-05	CERAMIC 18PF J		
C92 ,93		*	CK45FB1E103K	CERAMIC 0.010UF K		
C97 ,98			CK45FB1E223K	CERAMIC 0.022UF K		
JP29			C91-0749-05	CERAMIC 220PF K		
TC1 ,2		*	C05-0236-08	CERAMIC TRIMMER		
CN1		*	E35-1787-08	WIRING HARNESS 20-62021-00R		
CN1		*	E40-8089-08	PIN ASSY		
CN8		*	E40-8088-08	PIN ASSY		
CN9		*	E40-8090-08	PIN ASSY		
BPF1		*	L79-1247-08	CERAMIC FILTER		
CF1 ,2		*	L72-0601-08	CERAMIC FILTER		
CF3		*	L72-0603-08	CERAMIC FILTER		
CF4		*	L72-0602-08	CERAMIC FILTER		
CF5		*	L72-0604-08	CERAMIC FILTER		
L1		*	L31-0632-08	FM-RF COIL		
L2		*	L31-0631-08	FM-RF COIL		
L3		*	T90-0832-08	BER ANTENNA		
L4		*	L30-0945-08	AM-IFT		
L7		*	L39-1361-08	DRIVE COIL		
T1		*	L31-0628-08	FM-RF COIL		
T2		*	L30-0946-08	AM-IFT		
X1		*	L77-2210-08	CRYSTAL RESONATOR		
R43			1SS133	DIODE		
D1 ,2			1SS133	DIODE		
D3 ,4			KV1330NT	DIODE		
D7			SVC346	DIODE		
IC1			TA7358AP	IC(FM FRONT END)		
IC2			TA8132AN	IC		
IC3			LC7218M	IC(PLL FREQUENCY SYNTHESIZER)		
IC5			NJM78L05A	IC(VOLTAGE REGULATOR/ +5V)		
Q1		*	2SC2786(L)	TRANSISTOR		
Q2		*	2SC930E	TRANSISTOR		
Q3		*	DTC114YS	TRANSISTOR		
Q4 -5			DTA114YS	TRANSISTOR		
Q7			DTA114YS	TRANSISTOR		
Q8 ,9			2SC3330(S,T)	TRANSISTOR		
AUDIO						
C301-304			CE04KW1H010M	ELECTRO 1.0UF 50WV		
C305			C91-0749-05	CERAMIC 220PF K		
C306			CE04KW1C220M	ELECTRO 22UF 16WV		
C307			C91-0748-05	CERAMIC 180PF K		
C308			CE04GW1HR47M	LL-ELEC 0.47UF 50WV		
C309			CQ92FM1H223J	MYLAR 0.022UF J		
C310			CE04GW1H0R1M	LL-ELEC 0.1UF 50WV		
C311			CQ92FM1H103J	MYLAR 0.010UF J		

L : Scandinavia K : USA P : Canada R : Mexico
Y : PX(Far East, Hawaii) T : Europe E : Europe G : Germany
Y : AAFES(Europe) X : Australia M : Other Areas

Δ indicates safety critical components.

* New Parts
Parts without **Parts No.** are not supplied.
Les articles non mentionnés dans le **Parts No.** ne sont pas fournis.
Teile ohne **Parts No.** werden nicht geliefert.

5

Ref. No	Add-ress	New Parts	Parts No.	Description	Desti-nation	Re-marks
C312			CQ92FM1H563J	MYLAR 0.056UF J		
C313			MYLAR CQ92FM1H222J	2200PF J		
C314			CQ92FM1H153J	MYLAR 0.015UF J		
C315			C91-0755-05	CERAMIC 680PF K		
C316			CE04KW1H3R3M	ELECTRO 3.3UF 50WV		
C317			CE04KW1H0R1M	ELECTRO 0.1UF 50WV		
C318			CQ92FM1H223J	MYLAR 0.022UF J		
C319			C91-0745-05	CERAMIC 100PF K		
C320			CE04KW1H010M	ELECTRO 1.0UF 50WV		
C321			CE04KW1A101M	ELECTRO 100UF 10WV		
C322			CQ92FM1H563J	MYLAR 0.056UF J		
C323			CE04KW1H010M	ELECTRO 1.0UF 50WV		
C324			CE04KW1H3R3M	ELECTRO 3.3UF 50WV		
C325			CE04GW1HR47M	LL-ELEC 0.47UF 50WV		
C326			CQ92FM1H154J	MYLAR 0.15UF J		
C327			CE04KW1H010M	ELECTRO 1.0UF 50WV		
C328			C91-0755-05	CERAMIC 680PF K		
C329			CE04KW1A101M	ELECTRO 100UF 10WV		
C331			CE04KW1A470M	ELECTRO 47UF 10WV		
C332			C91-0753-05	CERAMIC 470PF K		
C333			CE04KW1A102M	ELECTRO 1000UF 10WV		
C334			CQ92FM1H104J	MYLAR 0.10UF J		
C335			CE04KW1H3R3M	ELECTRO 3.3UF 50WV		
C336			C91-0757-05	CERAMIC 1000PF K		
C350,351			C91-0756-05	CERAMIC 820PF K		
C352			C91-0753-05	CERAMIC 470PF K		
C353			CE04KW1H010M	ELECTRO 1.0UF 50WV		
C354			CE04KW1C220M	ELECTRO 22UF 16WV		
C355,356			C91-0749-05	CERAMIC 220PF K		
C357			CQ92FM1H822J	MYLAR 8200PF J		
C358			CE04KW1H4R7M	ELECTRO 4.7UF 50WV		
C359			CK45FB1H222Z	CERAMIC 2200PF Z		
C360			CE04KW1C100M	ELECTRO 10UF 16WV		
C361			CE04KW1H010M	ELECTRO 1.0UF 50WV		
C362			CQ92FM1H822J	MYLAR 8200PF J		
C401-404			CE04KW1H010M	ELECTRO 1.0UF 50WV		
C405			C91-0749-05	CERAMIC 220PF K		
C406			CE04KW1C220M	ELECTRO 22UF 16WV		
C407			C91-0748-05	CERAMIC 180PF K		
C408			CE04GW1HR47M	LL-ELEC 0.47UF 50WV		
C409			CQ92FM1H223J	MYLAR 0.022UF J		
C410			CE04GW1H0R1M	LL-ELEC 0.1UF 50WV		
C411			CQ92FM1H103J	MYLAR 0.010UF J		
C412			CQ92FM1H563J	MYLAR 0.056UF J		
C413			CQ92FM1H222J	MYLAR 2200PF J		
C414			CQ92FM1H153J	MYLAR 0.015UF J		
C415			C91-0755-05	CERAMIC 680PF K		
C416			CE04KW1H3R3M	ELECTRO 3.3UF 50WV		
C417			CQ92FM1H104J	MYLAR 0.10UF J		
C418			CQ92FM1H223J	MYLAR 0.022UF J		
C419			C91-0745-05	CERAMIC 100PF K		
C420			CE04KW1H010M	ELECTRO 1.0UF 50WV		
C421			CE04KW1A101M	ELECTRO 100UF 10WV		
C422			CQ92FM1H563J	MYLAR 0.056UF J		
C423			CE04KW1H010M	ELECTRO 1.0UF 50WV		

L : Scandinavia K : USA P : Canada R : Mexico
Y : PX(Far East, Hawaii) T : Europe E : Europe G : Germany
Y : AAFES(Europe) X : Australia M : Other Areas

⚠ indicates safety critical components.

* New Parts
Parts without **Parts No.** are not supplied.
Les articles non mentionnés dans le **Parts No.** ne sont pas fournis.
Teile ohne **Parts No.** werden nicht geliefert.

6

Ref. No	Add-ress	New Parts	Parts No.	Description	Desti-nation	Re-marks
C424			CE04KW1H3R3M	ELECTRO 3.3UF 50WV		
C425			CE04GW1HR47M	LL-ELEC 0.47UF 50WV		
C426			CQ92FM1H154J	MYLAR 0.15UF J		
C427			CE04KW1H010M	ELECTRO 1.0UF 50WV		
C428			C91-0755-05	CERAMIC 680PF K		
C429			CE04KW1A101M	ELECTRO 100UF 10WV		
C431			CE04KW1A470M	ELECTRO 47UF 10WV		
C432			C91-0753-05	CERAMIC 470PF K		
C433			CE04KW1A102M	ELECTRO 1000UF 10WV		
C434			CQ92FM1H104J	MYLAR 0.10UF J		
C435			CE04KW1H3R3M	ELECTRO 3.3UF 50WV		
C436			C91-0757-05	CERAMIC 1000PF K		
C450,451			C91-0756-05	CERAMIC 820PF K		
C452			C91-0753-05	CERAMIC 470PF K		
C453			CE04KW1H010M	ELECTRO 1.0UF 50WV		
C454			CE04KW1C220M	ELECTRO 22UF 16WV		
C455,456			C91-0749-05	CERAMIC 220PF K		
C457			CQ92FM1H822J	MYLAR 8200PF J		
C458			CE04KW1H4R7M	ELECTRO 4.7UF 50WV		
C459			CK45FB1H222Z	CERAMIC 2200PF Z		
C460			CE04KW1C100M	ELECTRO 10UF 16WV		
C461			CE04KW1H010M	ELECTRO 1.0UF 50WV		
C462			CQ92FM1H822J	MYLAR 8200PF J		
C502			CE04KW1C101M	ELECTRO 100UF 16WV		
C503			CK45FB1H223Z	CERAMIC 0.022UF Z		
C506			CK45FB1H223Z	CERAMIC 0.022UF Z		
C507			CE04KW1A470M	ELECTRO 47UF 10WV		
C508			CE04KW1A101M	ELECTRO 100UF 10WV		
C509			CE04KW1E221M	ELECTRO 220UF 25WV		
C510			CE04KW1E332M	ELECTRO 3300UF 25WV		
C511			CE04KW1A221M	ELECTRO 220UF 10WV		
C512			CE04KW1A470M	ELECTRO 47UF 10WV		
C513			CK45FB1H104Z	CERAMIC 0.10UF Z		
C514			CE04KW1A101M	ELECTRO 100UF 10WV		
C515			CE04KW1A221M	ELECTRO 220UF 10WV		
C516,517			CK45FB1H223Z	CERAMIC 0.022UF Z		
C518,519			CE04KW1A470M	ELECTRO 47UF 10WV		
C520,521			C91-0733-05	CERAMIC 33PF J		
C522			CK45FB1H223Z	CERAMIC 0.022UF Z		
C523			C91-0757-05	CERAMIC 1000PF K		
C524			C91-0769-05	CERAMIC 0.010UF K		
C525,526			CE04KW1A470M	ELECTRO 47UF 10WV		
C528			CE04KW1H010M	ELECTRO 1.0UF 50WV		
C529			C91-0757-05	CERAMIC 1000PF K		
C530,531			CE04KW1H010M	ELECTRO 1.0UF 50WV		
C533			CE04KW1C101M	ELECTRO 100UF 16WV		
C534			CK45FB1H223Z	CERAMIC 0.022UF Z		
C535			CE04KW1C101M	ELECTRO 100UF 16WV		
C536			CK45FB1H223Z	CERAMIC 0.022UF Z		
C551			CE04KW1H2R2M	ELECTRO 2.2UF 50WV		
C552			CE04KW1A101M	ELECTRO 100UF 10WV		
C553,554			CE04KW1A330M	ELECTRO 33UF 10WV		
C555			CQ92FM1H182J	MYLAR 1800PF J		
C556			CQ92FM1H103J	MYLAR 0.010UF J		
C557			C91-0769-05	CERAMIC 0.010UF K		

L : Scandinavia K : USA P : Canada R : Mexico
Y : PX(Far East, Hawaii) T : Europe E : Europe G : Germany
Y : AAFES(Europe) X : Australia M : Other Areas

⚠ indicates safety critical components.

PARTS LIST

PMS-F3

* New Parts

Parts without **Parts No.** are not supplied.Les articles non mentionnés dans le **Parts No.** ne sont pas fournis.Teile ohne **Parts No.** werden nicht geliefert.

7

Ref. No	Add-ress	New Parts	Parts No.	Description	Desti-nation	Re-marks
C559			CE04KW1A101M	ELECTRO	100UF	10WV
C560			CQ92FM1H103J	MYLAR	0.010UF	J
C561			C91-0751-05	CERAMIC	330PF	K
C562			CQ92FM1H102J	MYLAR	1000PF	J
C563			CE04KW1A470M	ELECTRO	47UF	10WV
C564			CE04KW1H010M	ELECTRO	1.0UF	50WV
C565			CE04KW1H4R7M	ELECTRO	4.7UF	50WV
C566			CE04GW1HR47M	LL-ELEC	0.47UF	50WV
C567			CE04KW1A470M	ELECTRO	47UF	10WV
C568,569			CC45FSL1H270J	CERAMIC	27PF	J
C570			CE04KW1A470M	ELECTRO	47UF	10WV
C571			C91-0769-05	CERAMIC	0.010UF	K
C572			CE04KW1E100M	ELECTRO	10UF	25WV
C573			CE04KW1A470M	ELECTRO	47UF	10WV
C574			CE04KW1C220M	ELECTRO	22UF	16WV
C575			CE04KW1C101M	ELECTRO	100UF	16WV
C576			CE04KW1H010M	ELECTRO	1.0UF	50WV
CN9		*	E35-1792-08	WIRING HARNESS		
CN502		*	E35-1794-08	WIRING HARNESS		
CN503		*	E35-1793-08	WIRING HARNESS		
J2 ,3		*	E40-8093-08	PIN ASSY		
J4 ,5		*	E40-8094-08	PIN ASSY		
J10		*	E35-1788-08	WIRING HARNESS		
J11		*	E35-1790-08	WIRING HARNESS		
J12		*	E35-1789-08	WIRING HARNESS		
J12		*	E40-8090-08	PIN ASSY		
J13		*	E35-1791-08	WIRING HARNESS		
J14		*	E40-8091-08	PIN ASSY		
JK501,502		*	E11-0358-08	MINIATURE PHONE JACK		
MD		*	E11-0359-08	MINIATURE PHONE JACK		
JP546			L39-1370-08	COIL	1UH	
JP628			L39-1370-08	COIL	1UH	
L501		*	L39-1362-08	DRIVE COIL		
T501		*	L32-0597-08	BIAS OSCILLATING		
X501,502		*	L72-0606-08	CERAMIC FILTER		
R502		*	L39-1371-08	COIL	100UH	
R509		*	RD14GB2B560J	FL-PROOF RD	56	J 1/8W
R599			R92-1865-05	FUSE RESIST	10	G 1/2W
VR501,502		*	R31-0087-08	VARIABLE RESISTOR		
SW501		*	S62-0065-08	SLIDE SWITCH		
D301			1SS133	DIODE		
D401			1SS133	DIODE		
D502			1SS133	DIODE		
D504			1SS133	DIODE		
D506,507			1SS133	DIODE		
D510			1SS133	DIODE		
D512			1SS133	DIODE		
IC501		*	LC75394NE	IC		
IC502		*	MC14094B	IC(8ST SHIFT/STORE REGISTER)		
IC503		*	MSM6654A-512GS	IC(ADPCM)		
IC504			TA8229K	IC		
IC505			NJM78L05A	IC(VOLTAGE REGULATOR/ +5V)		
IC506			TA8189N	IC		

L : Scandinavia

K : USA

P : Canada

R : Mexico

Y : PX(Far East, Hawaii)

T : Europe

E : Europe

G : Germany

Y : AAFES(Europe)

X : Australia

M : Other Areas

⚠ indicates safety critical components.

* New Parts

Parts without **Parts No.** are not supplied.Les articles non mentionnés dans le **Parts No.** ne sont pas fournis.Teile ohne **Parts No.** werden nicht geliefert.

8

Ref. No	Add-ress	New Parts	Parts No.	Description	Desti-nation	Re-marks
IC507			BA335	IC		
IC508		*	M37471M4-655FP	IC		
Q301,302			2SC3330(S,T)	TRANSISTOR		
Q303		*	2SD1936T	TRANSISTOR		
Q304,305			2SC3330(S,T)	TRANSISTOR		
Q306,307			2SJ164R	FET		
Q308,309			DTC114TS	TRANSISTOR		
Q310			DTC124ES	TRANSISTOR		
Q311			2SC3330(S,T)	TRANSISTOR		
Q312		*	2SD1936T	TRANSISTOR		
Q401,402			2SC3330(S,T)	TRANSISTOR		
Q403		*	2SD1936T	TRANSISTOR		
Q404,405			2SC3330(S,T)	TRANSISTOR		
Q406,407			2SJ164R	FET		
Q408,409			DTC114TS	TRANSISTOR		
Q410			DTC124ES	TRANSISTOR		
Q411			2SC3330(S,T)	TRANSISTOR		
Q412		*	2SD1936T	TRANSISTOR		
Q501			2SD2012	TRANSISTOR		
Q502			2SC3330(S,T)	TRANSISTOR		
Q503			DTA124ES	TRANSISTOR		
Q504			DTC124ES	TRANSISTOR		
Q506		*	2SB926T	TRANSISTOR		
Q507			DTC114YS	TRANSISTOR		
Q508			2SC3330(S,T)	TRANSISTOR		
Q509			DTC114YS	TRANSISTOR		
Q510-512			2SC3330(S,T)	TRANSISTOR		
Q513			DTA124ES	TRANSISTOR		
Q514			DTC124ES	TRANSISTOR		
Q515			2SC3330(S,T)	TRANSISTOR		
Q516			2SA1317T	TRANSISTOR		
Q517		*	2SD1936T	TRANSISTOR		
Q518			2SC3330(S,T)	TRANSISTOR		
Q519-521			DTC124ES	TRANSISTOR		
Q522			DTC114YS	TRANSISTOR		
Q523		*	2SB926T	TRANSISTOR		
Q524			DTC114YS	TRANSISTOR		
Q525			2SA1317T	TRANSISTOR		
Q526,527			DTC124ES	TRANSISTOR		
Q528		*	2SB926T	TRANSISTOR		
Q529			DTC114YS	TRANSISTOR		
Q530		*	2SB926T	TRANSISTOR		
Q531			DTC114YS	TRANSISTOR		
Q539			2SD2012	TRANSISTOR		
Q540,541			2SC3330(S,T)	TRANSISTOR		
ZD501		*	MTZT10A	ZENER DIODE		
OPT1			W02-1114-05	ELECTRIC CIRCUIT MODULE		
DISPLAY						
-		*	B30-2503-08	BACK LIGHT ELEMENT		
D204		*	B30-2502-08	LED		
D207		*	B30-2504-08	LED		
LED201-6		*	B30-2504-08	LED		
C201,202			C91-0723-05	CERAMIC	12PF	J

L : Scandinavia

K : USA

P : Canada

R : Mexico

Y : PX(Far East, Hawaii)

T : Europe

E : Europe

G : Germany

Y : AAFES(Europe)

X : Australia

M : Other Areas

⚠ indicates safety critical components.

* New Parts
 Parts without **Parts No.** are not supplied.
 Les articles non mentionnés dans le **Parts No.** ne sont pas fournis.
 Teile ohne **Parts No.** werden nicht geliefert.

9

Ref. No	Add-ress	New Parts	Parts No.	Description	Desti-nation	Re-marks
C206			C91-0684-05	CERAMIC 0.022UF K		
C207			CE04KW1H4R7M	ELECTRO 4.7UF 50WV		
C209			C91-0684-05	CERAMIC 0.022UF K		
C216-218			CK45FB1H104Z	CERAMIC 0.10UF Z		
C219			C91-0684-05	CERAMIC 0.022UF K	E	
C221			CE04KW1A101M	ELECTRO 100UF 10WV		
C222			CK45FB1H104Z	CERAMIC 0.10UF Z		
C224			CE04KW1A100M	ELECTRO 10UF 10WV	Y	
C227,228			C91-0745-05	CERAMIC 100PF K		
C230,231			C91-0745-05	CERAMIC 100PF K	E	
C238			C91-0684-05	CERAMIC 0.022UF K		
C247			CK45FB1H104Z	CERAMIC 0.10UF Z	E	
C251,252			C91-0745-05	CERAMIC 100PF K	Y	
CX			C91-0745-05	CERAMIC 100PF K	E	
CN201		*	E40-8096-08	PIN ASSY	E	
CN201		*	E40-8097-08	PIN ASSY	Y	
CN202		*	E40-8098-08	PIN ASSY	Y	
CN203		*	E40-8099-08	PIN ASSY		
CN204,205		*	E40-8097-08	PIN ASSY		
CN205		*	E35-1782-08	WIRING HARNESS		
CN206		*	E40-8101-08	PIN ASSY		
CN207		*	E40-8096-08	PIN ASSY		
CN208		*	E40-8095-08	PIN ASSY		
EL		*	E40-8100-08	PIN ASSY		
J3		*	E35-1783-08	WIRING HARNESS (L CAS OPEN)		
J3		*	E35-1784-08	WIRING HARNESS (R CAS OPEN)		
LCD201		*	B38-0160-08	LIQUID CRYSTAL		
JP211			L39-1369-08	COIL 2.2UH	Y	
L201			L39-1369-08	COIL 2.2UH		
L202			L39-1369-08	COIL 2.2UH	Y	
LX			L39-1369-08	COIL 2.2UH	E	
X201		*	L77-2211-08	CRYSTAL RESONATOR		
X202		*	L78-0673-08	CRYSTAL RESONATOR		
JP208-210			L39-1370-08	COIL 1UH	Y	
JP212			L39-1370-08	COIL 1UH	Y	
R213			L39-1369-08	COIL 2.2UH	Y	
SW201			S70-0049-08	TACT SWITCH		
SW202-212		*	S70-0048-08	TACT SWITCH		
SW213			S70-0049-08	TACT SWITCH		
SW214-224		*	S70-0048-08	TACT SWITCH		
SW225			S70-0049-08	TACT SWITCH		
SW226-231		*	S70-0048-08	TACT SWITCH		
D201			1SS133	DIODE		
D202			1SS133	DIODE	Y	
D203			1SS133	DIODE		
D205,206			1SS133	DIODE		
IC201		*	LC867124A-5F09	IC		
IC202		*	MC14094BD	IC		
IC203			PST529D	IC(SYSTEM RESET)		
IR201		*	W02-2594-08	ELECTRIC CIRCUIT MODULE		

L : Scandinavia K : USA P : Canada R : Mexico
 Y : PX(Far East, Hawaii) T : Europe E : Europe G : Germany
 Y : AAFES(Europe) X : Australia M : Other Areas

⚠ indicates safety critical components.

* New Parts
 Parts without **Parts No.** are not supplied.
 Les articles non mentionnés dans le **Parts No.** ne sont pas fournis.
 Teile ohne **Parts No.** werden nicht geliefert.

10

Ref. No	Add-ress	New Parts	Parts No.	Description	Desti-nation	Re-marks
Q201			DTA114YS	TRANSISTOR		
Q202			DTC114ES	TRANSISTOR		
CD CONTROL						
C801			CE04KW1C102M	ELECTRO 1000UF 16WV		
C805			CE04KW1A221M	ELECTRO 220UF 10WV		
C806			CK45FB1H104Z	CERAMIC 0.10UF Z		
C807,808			C91-0757-05	CERAMIC 1000PF K		
C809,810			CE04KW1E100M	ELECTRO 10UF 25WV		
C811,812			C91-0746-05	CERAMIC 120PF K		
C813,814			C91-0745-05	CERAMIC 100PF K		
C815			CE04KW1A221M	ELECTRO 220UF 10WV		
C816,817			C91-0749-05	CERAMIC 220PF K		
C818			C91-0745-05	CERAMIC 100PF K		
C819			CE04KW1A221M	ELECTRO 220UF 10WV		
C820			C91-0684-05	CERAMIC 0.022UF K	E	
C822			CQ92FM1H153J	MYLAR 0.015UF J		
C823,824			C91-0684-05	CERAMIC 0.022UF K		
C825			CE04KW1A331M	ELECTRO 330UF 10WV		
C826			CE04KW1E100M	ELECTRO 10UF 25WV		
C827			CK45FB1H104Z	CERAMIC 0.10UF Z	E	
C828			C91-0684-05	CERAMIC 0.022UF K		
C830			CE04KW1C331M	ELECTRO 330UF 16WV		
C831		*	CK45FB1E332K	CERAMIC 3300PF K		
C832			CE04KW1A470M	ELECTRO 47UF 10WV		
C833			CE04KW1H010M	ELECTRO 1.0UF 50WV		
C834			C91-0745-05	CERAMIC 100PF K		
C835			CE04KW1HR47M	ELECTRO 0.47UF 50WV		
C836			CK45FB1H104Z	CERAMIC 0.10UF Z		
C837		*	CK45FB1E332K	CERAMIC 3300PF K		
C838			C91-0733-05	CERAMIC 33PF J		
C839			CQ92FM1H123J	MYLAR 0.012UF J		
C840			CQ92FM1H104J	MYLAR 0.10UF J	E	
C841			CK45FB1H104Z	CERAMIC 0.10UF Z	Y	
C842			CQ92FM1H473J	MYLAR 0.047UF J		
C843			CE04KW1H0R1M	ELECTRO 0.1UF 50WV		
C844			CQ92FM1H683J	MYLAR 0.068UF J		
C845,846			CQ92FM1H333J	MYLAR 0.033UF J		
C847			C91-0757-05	CERAMIC 1000PF K		
C848			CE04KW1H0R1M	ELECTRO 0.1UF 50WV		
C849			C91-0757-05	CERAMIC 1000PF K		
C850			CE04KW1E100M	ELECTRO 10UF 25WV		
C851			C91-0676-05	CERAMIC 0.010UF K		
C852			CE04KW1A470M	ELECTRO 47UF 10WV		
C853			CE04KW1A221M	ELECTRO 220UF 10WV		
C854			C91-0684-05	CERAMIC 0.022UF K		
C855			CE04KW1A331M	ELECTRO 330UF 10WV		
C856			CK45FB1H104Z	CERAMIC 0.10UF Z		
C857			CE04KW1A101M	ELECTRO 100UF 10WV		
C859			CE04KW1HR33M	ELECTRO 0.33UF 50WV		
C860			CK45FB1H104Z	CERAMIC 0.10UF Z		
C861			C91-0676-05	CERAMIC 0.010UF K		
C862			CE04KW1E100M	ELECTRO 10UF 25WV		
C864			CK45FB1E223Z	CERAMIC 0.022UF Z	Y	
C864			CK45FB1H104Z	CERAMIC 0.10UF Z	E	

L : Scandinavia K : USA P : Canada R : Mexico
 Y : PX(Far East, Hawaii) T : Europe E : Europe G : Germany
 Y : AAFES(Europe) X : Australia M : Other Areas

⚠ indicates safety critical components.

PARTS LIST

PMS-F3

12

* New Parts
Parts without **Parts No.** are not supplied.
Les articles non mentionnés dans le **Parts No.** ne sont pas fournis.
Teile ohne **Parts No.** werden nicht geliefert.

Ref. No	Add-ress	New Parts	Parts No.	Description	Desti-nation	Re-marks
7	1A		D13-1793-08	GEAR (P)		
8	1A		D13-1794-08	GEAR (C)		
9	1A		D13-1795-08	PULLEY (S)		
10	2A		D13-1796-08	GEAR (A)(S)		
11	3A		D13-1797-08	GEAR (B)(RP)		
12	1A		D16-0713-08	BELT		
13	2A		D23-0328-08	BEARING		
15	2B		E40-8051-08	CONNECTOR PIN (5P)		
20	3A		G01-3969-08	COMPRESSION SPRING		
25	3A		J02-1179-08	INSULATING RUBBER		
26	3A		J02-1180-08	INSULATING RUBBER		
27	1A		J19-5768-08	HOLDER ASSY		
28	3B		J19-5769-08	HOLDER ASSY		
29	2B		J70-0995-08	PRINTED WIRING BOARD(LOADING)		
30	3A		J90-0846-08	CENTER RING (LO)(S)		
31	2A		J99-0592-08	DISC TABLE		
35	2B		L33-0543-08	INDUCTOR (47uH)		
BB			N09-3345-08	TAPTITE SCREW (2.6X16)		
40	2B		S74-0075-08	LEAF SWITCH		
DM	3A		T42-0874-08	MOTOR CHASSIS ASSY		
FM	3A		T42-0875-08	MOTOR GEAR ASSY		
LM	2B		T42-0873-08	LOADING MOTOR ASSY		
PU	3B		T25-0061-08	PICK UP ASSY (KSS-213C/Q-RP)		

L : Scandinavia K : USA P : Canada R : Mexico
Y : PX(Far East, Hawaii) T : Europe E : Europe G : Germany
Y : AAFES(Europe) X : Australia M : Other Areas

⚠ indicates safety critical components.

11

* New Parts
Parts without **Parts No.** are not supplied.
Les articles non mentionnés dans le **Parts No.** ne sont pas fournis.
Teile ohne **Parts No.** werden nicht geliefert.

Ref. No	Add-ress	New Parts	Parts No.	Description	Desti-nation	Re-marks
C865			CE04KW1H4R7M	ELECTRO 4.7UF 50WV		
C866			CQ92FM1H333J	MYLAR 0.033UF J		
C867			CQ92FM1H102J	MYLAR 1000PF J		
C868			C91-0725-05	CERAMIC 15PF J		
C869			CQ92FM1H272J	MYLAR 2700PF J		
C870			CK45FB1H104Z	CERAMIC 0.10UF Z		
C871			CE04KW1A101M	ELECTRO 100UF 10WV		
C872			CQ92FM1H104J	MYLAR 0.10UF J		
C873			CK45FB1H104Z	CERAMIC 0.10UF Z	E	
C874			CE04KW1A101M	ELECTRO 100UF 10WV		
C875			CK45FB1H104Z	CERAMIC 0.10UF Z		
C876,877			CC45FCH1H330J	CERAMIC 33PF J		
C878			CE04KW1A101M	ELECTRO 100UF 10WV		
C879			C91-0684-05	CERAMIC 0.022UF K	E	
C880			CK45FB1H104Z	CERAMIC 0.10UF Z		
C881			C91-0684-05	CERAMIC 0.022UF K	E	
C886-888			CK45FB1H104Z	CERAMIC 0.10UF Z		
C889			CK45FB1E223Z	CERAMIC 0.022UF Z	Y	
C890			C91-0684-05	CERAMIC 0.022UF K	E	
C891			CQ92FM1H333J	MYLAR 0.033UF J		
-		*	E35-1797-08	WIRING HARNESS (TO LM)		
-		*	E35-1799-08	WIRING HARNESS (TO PICKUP)		
CN801		*	E35-1796-08	WIRING HARNESS		
CN802		*	E40-8102-08	PIN ASSY		
CN803		*	E35-1798-08	WIRING HARNESS		
CN805		*	E35-1795-08	WIRING HARNESS		
CN805		*	E40-8103-08	PIN ASSY	Y	
CN806		*	E40-8104-08	PIN ASSY		
CN807		*	E35-1798-08	WIRING HARNESS		
J821,822			L39-1370-08	COIL 1UH		
X801		*	L77-2212-08	CRYSTAL RESONATOR		
VR801		*	R31-0087-08	VARIABLE RESISTOR 5K		
VR802		*	R31-0095-08	VARIABLE RESISTOR 100K		
692	2E	*	S62-0066-08	SLIDE SWITCH PICKUP		
SW801		*	S62-0074-08	SLIDE SWITCH	Y	
D801			MTZJ5.6B	ZENER DIODE		
D802			1N4001	DIODE		
IC801		*	LA9240	IC		
IC802		*	LC78621	IC		
IC803		*	BA4558N	IC(OP AMP X2)		
IC804			BA6396FP	IC		
IC805			TA7291S	IC(BRIDGE DRIVER)		
IC806		*	L78M05T	IC(VOLTAGE REGULATOR/ +5V)		
Q801		*	2SC3330(S,T)	TRANSISTOR		
Q802		*	2SB926T	TRANSISTOR		
Q803			2SA1317T	TRANSISTOR		
Q804			DTC124ES	TRANSISTOR		
CD MECHANISM						
1	2B		A10-3325-08	CHASSIS		
3	2A		D10-3695-08	TABLE GUIDE SHAFT		
5	3A		D10-3696-08	FEDD SHAFT		
6	2A		D12-0156-08	CAM		

L : Scandinavia K : USA P : Canada R : Mexico
Y : PX(Far East, Hawaii) T : Europe E : Europe G : Germany
Y : AAFES(Europe) X : Australia M : Other Areas

⚠ indicates safety critical components.

Note:
Component and circuitry are subject to modification to insure best operation under differing local conditions. This manual is based on Europe (E) standard, and provides information on regional circuit modification through use of alternate schematic diagrams, and information on regional component variations through use of parts list.

KENWOOD CORPORATION
14-6, Dogenzaka 1-chome, Shibuya-ku, Tokyo, 150 Japan
KENWOOD SERVICE CORPORATION
P.O. BOX 22745, 2201 East Dominguez St., Long Beach, CA 90801-5745, U.S.A.