

RXD-M505USB-B/M505USB-S

LS-M505-B/M505-S

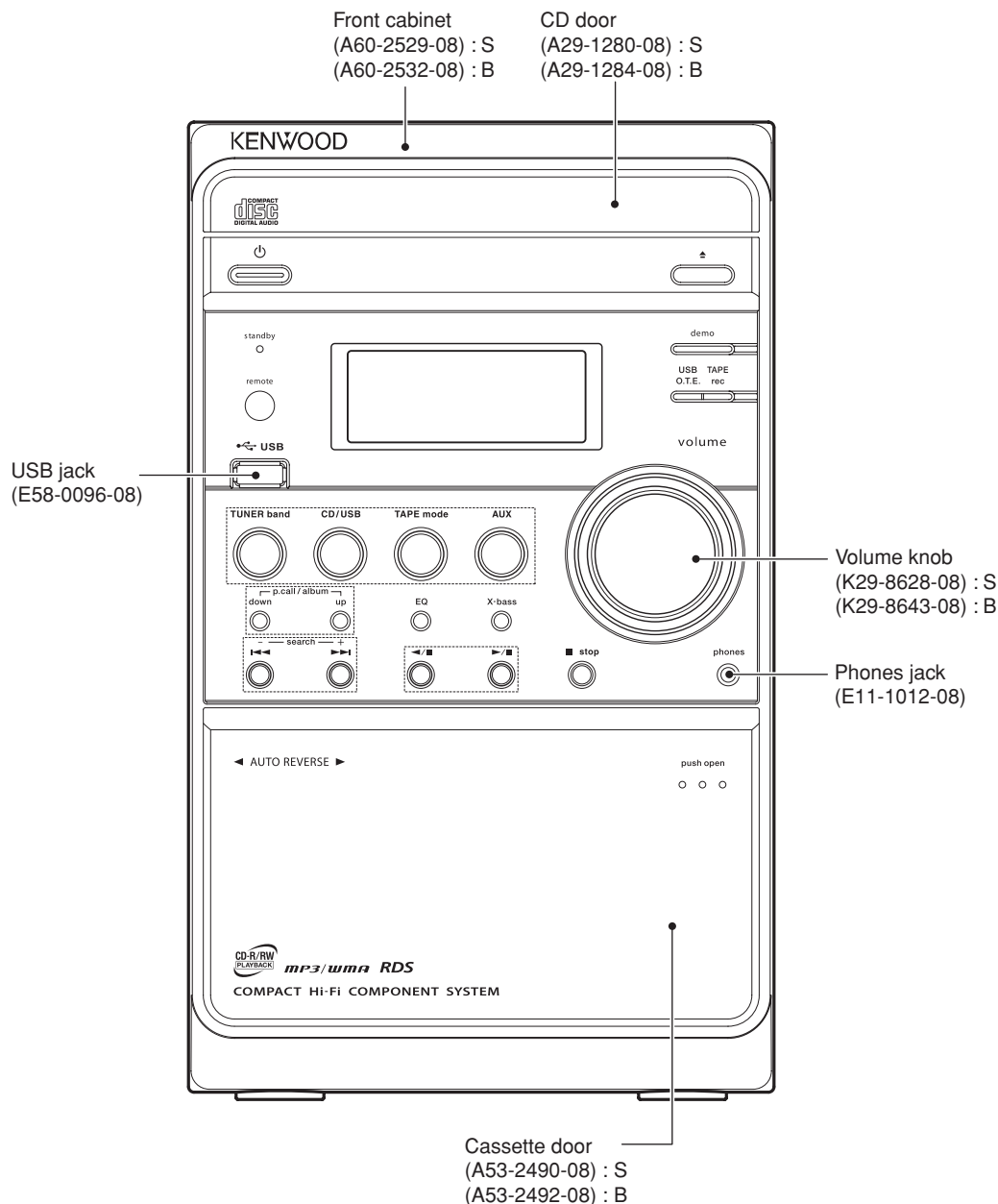
SERVICE MANUAL

(M-505USB)

KENWOOD

Kenwood Corporation

© 2007-10 PRINTED IN JAPAN
B53-4023-00 (N/J) 122



DANGER:
Please do not look at the laser beam directly during repair or operation check.

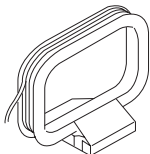
S : Silver
B : Black

RXD-M505USB/LS-M505

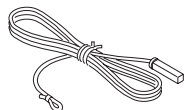
ACCESSORIES / CAUTIONS

Accessories

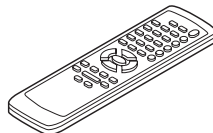
AM loop antenna (1)
(T90-0926-08)



FM ANT Wire (1)
(T90-0925-08)



Remote control unit (1)
RC-F0320E
(A70-1727-08)



Batteries (R6/AA) (2)
(-)



SYSTEM vs COLOR

SYSTEM	RECEIVER	SPEAKER	COLOR
M-505USB-B	RXD-M505USB-B	LS-M505-B	BLACK
M-505USB-S	RXD-M505USB-S	LS-M505-S	SILVER

Cautions

Resetting the Microcomputer

The microcomputer may malfunction (unit cannot be operated, or shows an erroneous display) if the power cord is unplugged while the power is ON, or due to some other external factor. If this happens, execute the following procedure to reset the microcomputer and return the unit to its normal operating condition.

When the power is on and TUNER input is selected, press and hold down the (■ stop) button on the unit for more than 2 seconds. Unplug the AC cord and plug it back in if "INIT. OK" is appears.

- Please note that resetting the microcomputer will clear the contents of the memory and return the unit to the state it was in when it left the factory.

The marking of products using lasers

**CLASS 1 LASER PRODUCT
LASER KLASSE 1
APPAREIL A LASER DE CLASSE 1
LUOKAN 1 LASERLAITE
KLASS 1 LASERAPPARAT**

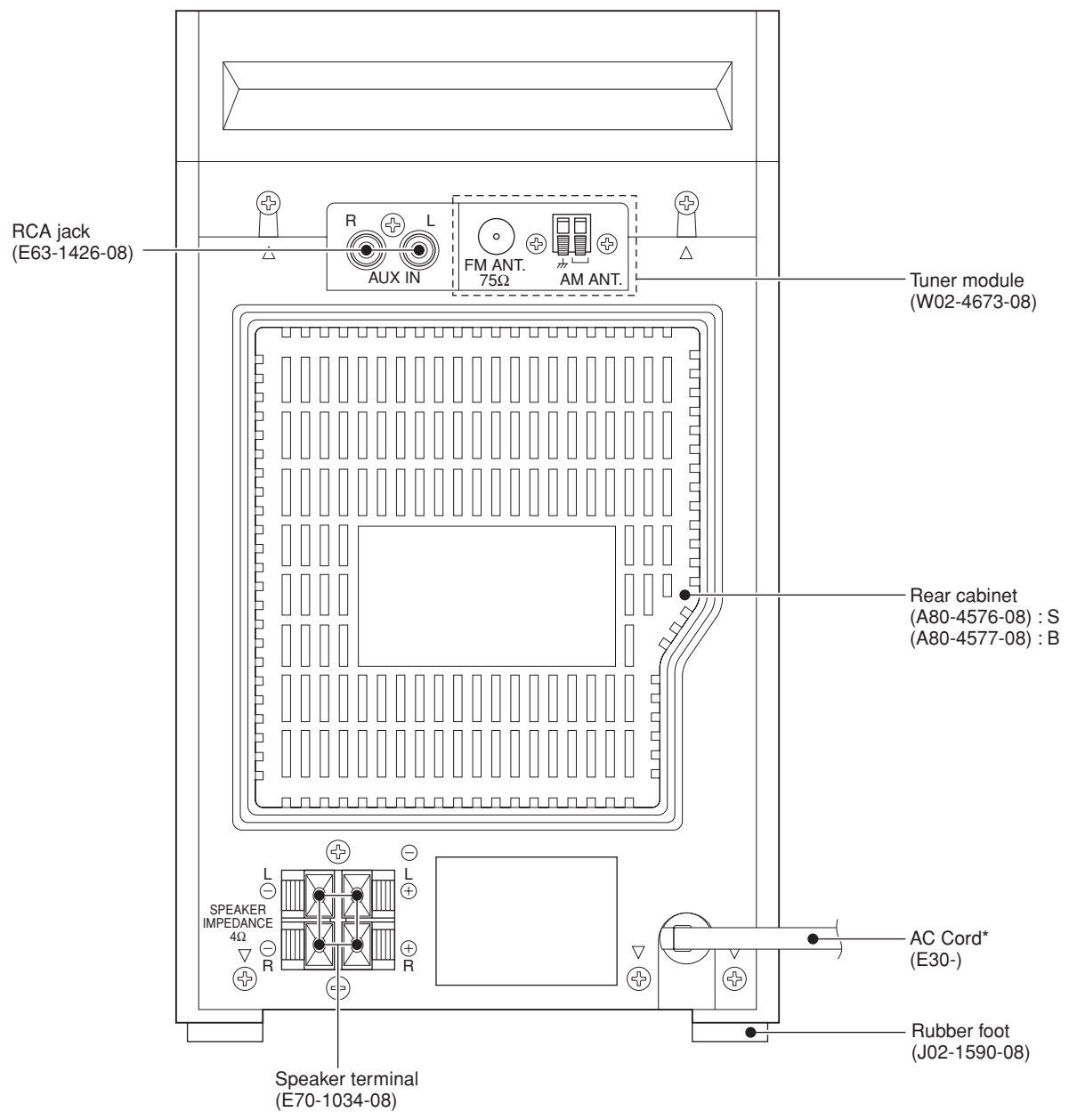
The marking this product has been classified as Class 1. It means that there is no danger of hazardous radiation outside the product.

Location: Bottom



RXD-M505USB/LS-M505

EXTERNAL VIEW



* Refer to parts list on page 20.

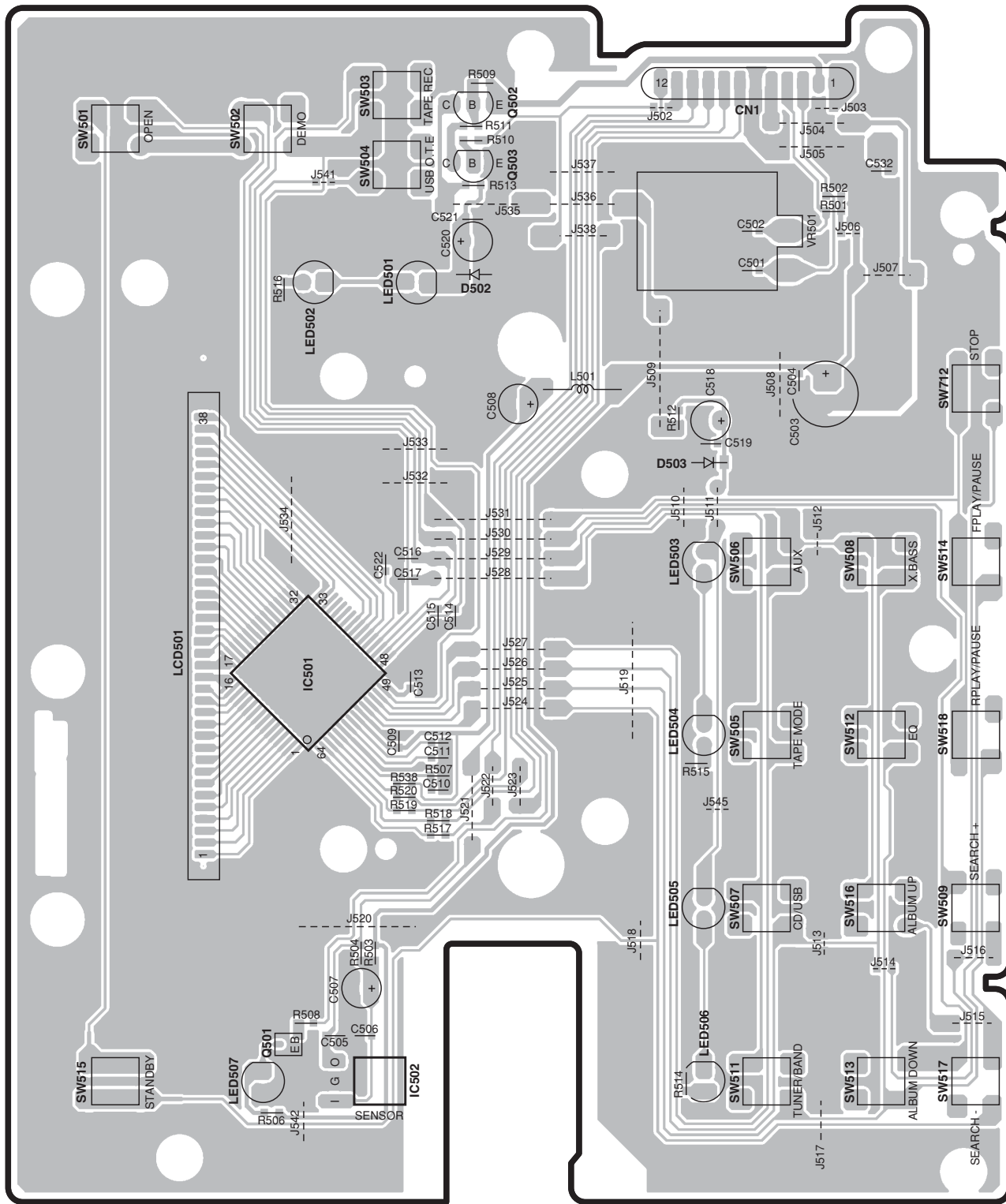
RXD-M505USB/LS-M505

ADJUSTMENT

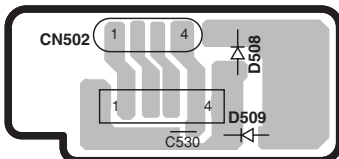
No	ITEM	INPUT SETTING	OUTPUT SETTING	RECEIVER SETTING	ALIGNMENT POINT	ALIGNMENT SETTING	FIG.
Cassette deck							
1	Demagnetization and cleaning	-	-	Power: OFF Demagnetization and cleaning	Heads, capstan and pinch roller	Demagnetize heads with the head eraser (Demagnetizer). Clean heads capstan and pinch roller using a cotton swab slightly damped with alcohol	
2	Azimuth of Heads	MTT-114: 10kHz,-10dB	Connect the oscilloscope and VOM to PHONE jack.	PLAYBACK	Screw fixing heads	Adjust the output to maximum and turn the azimuth adjusting screw for Lissajours waveform pattern of the oscilloscope to become close to a 45-degrees straight line.	
3	Tape Speed	MTT-111 3kHz	Connect the oscilloscope and VOM to PHONE jack.	PLAYBACK	Potentiometer in motor	Adjust the tape speed so that 3kHz is obtained at the center of tape.	
4	Bias Frequency	Normal tape	Connect the frequency counter across C202	RECORD	L203	The frequency counter shows 85kHz±0.5kHz	

PC BOARD

DISPLAY



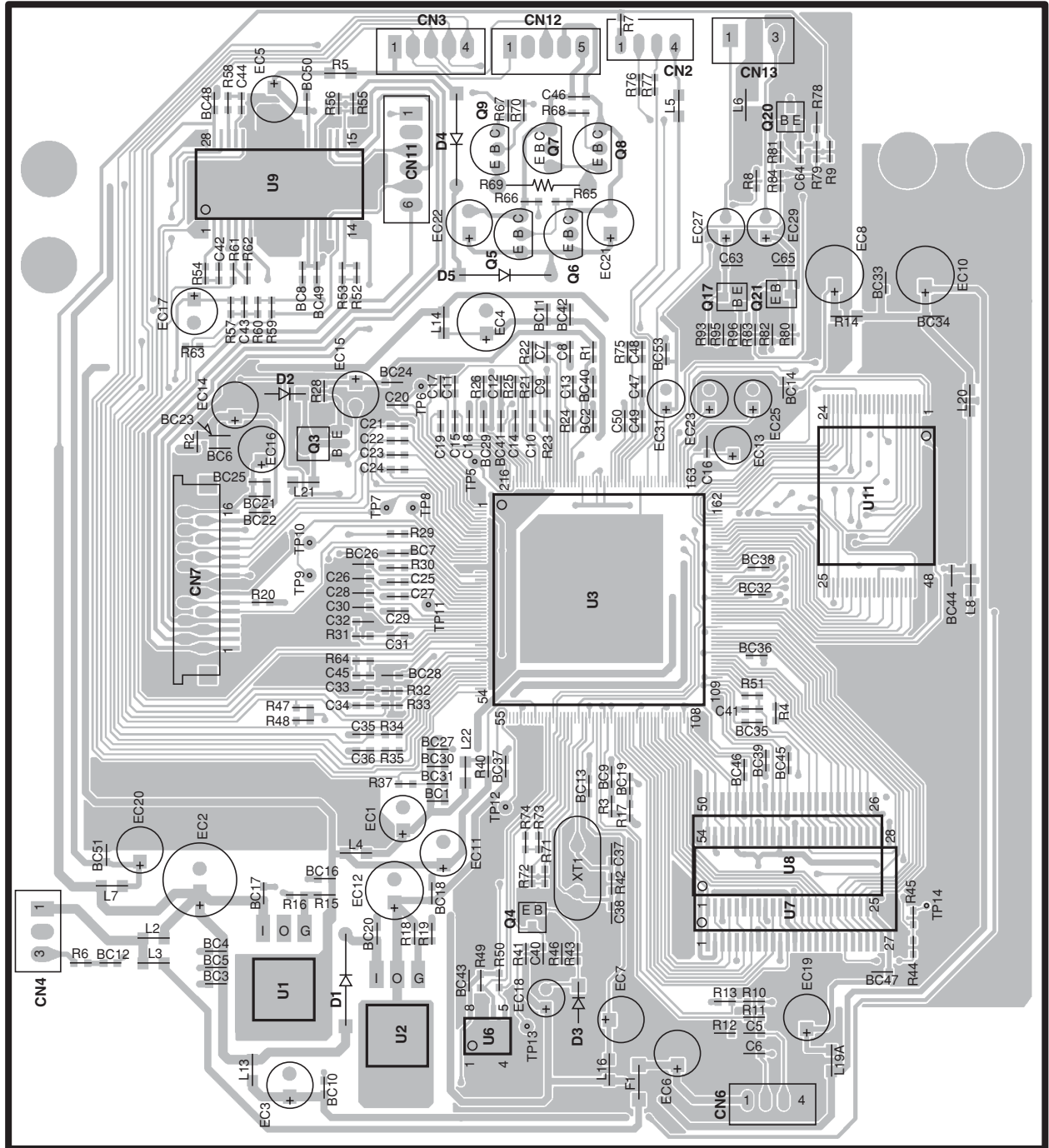
USB



Refer to the schematic diagram for the values of resistors and capacitors.

RXD-M505USB/LS-M505 PC BOARD

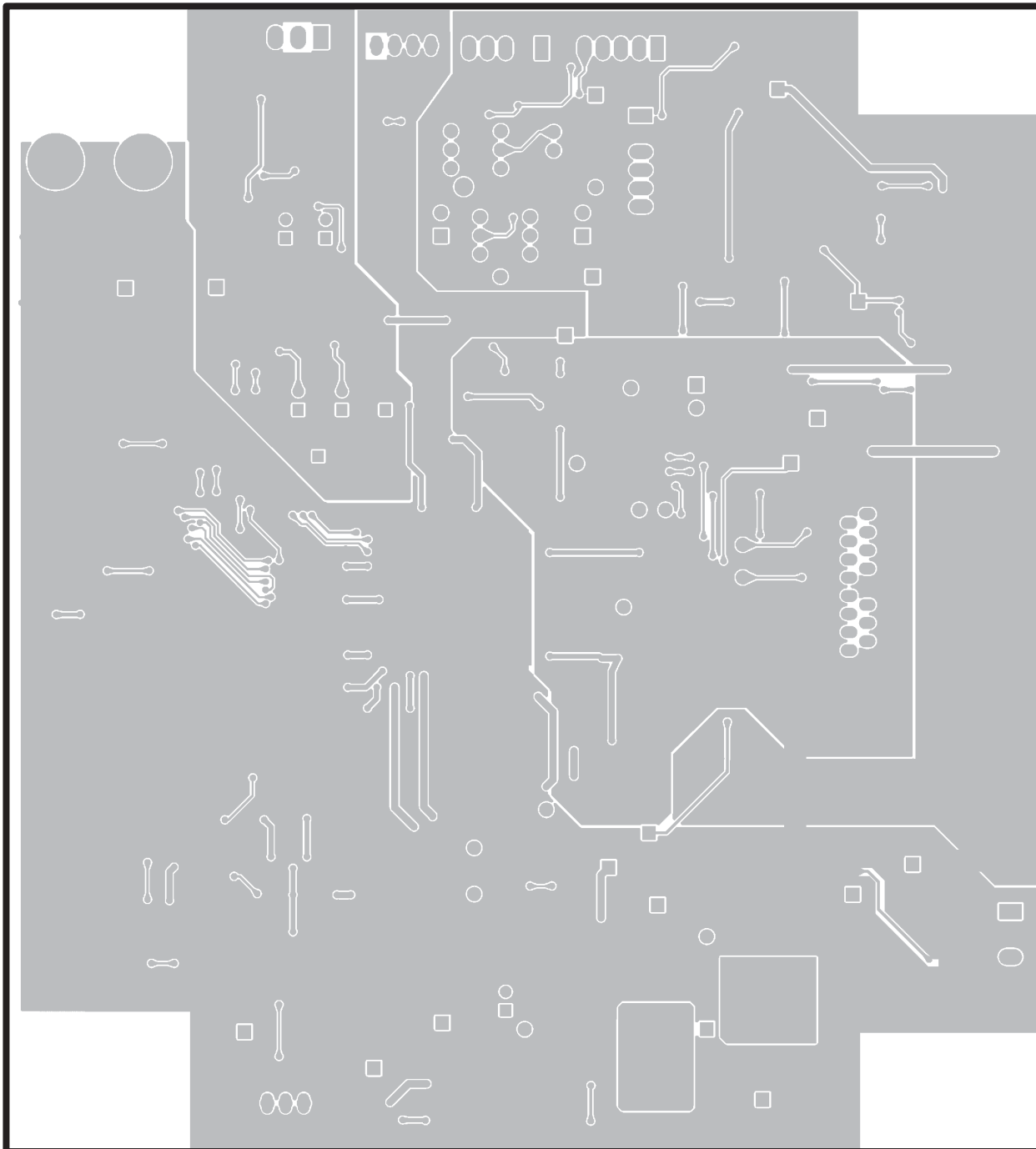
CD (SIDE A)



Refer to the schematic diagram for the values of resistors and capacitors.

PC BOARD

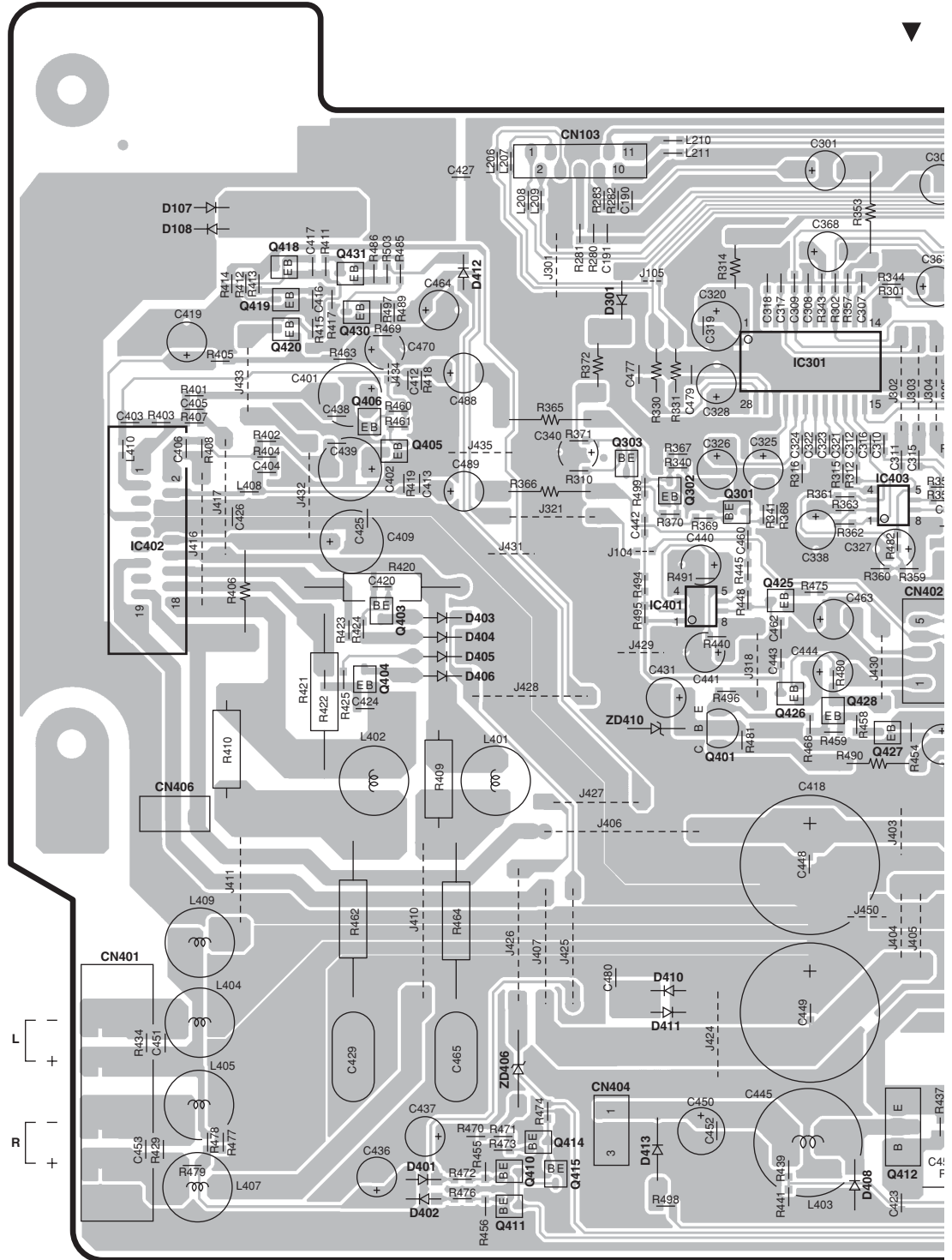
CD (SIDE B)



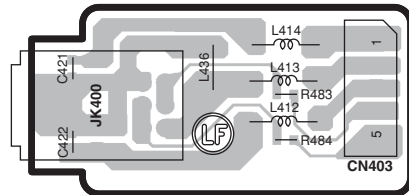
Refer to the schematic diagram for the values of resistors and capacitors.

RXD-M505USB/LS-M505 PC BOARD

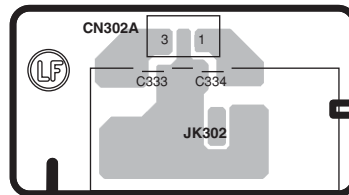
MAIN

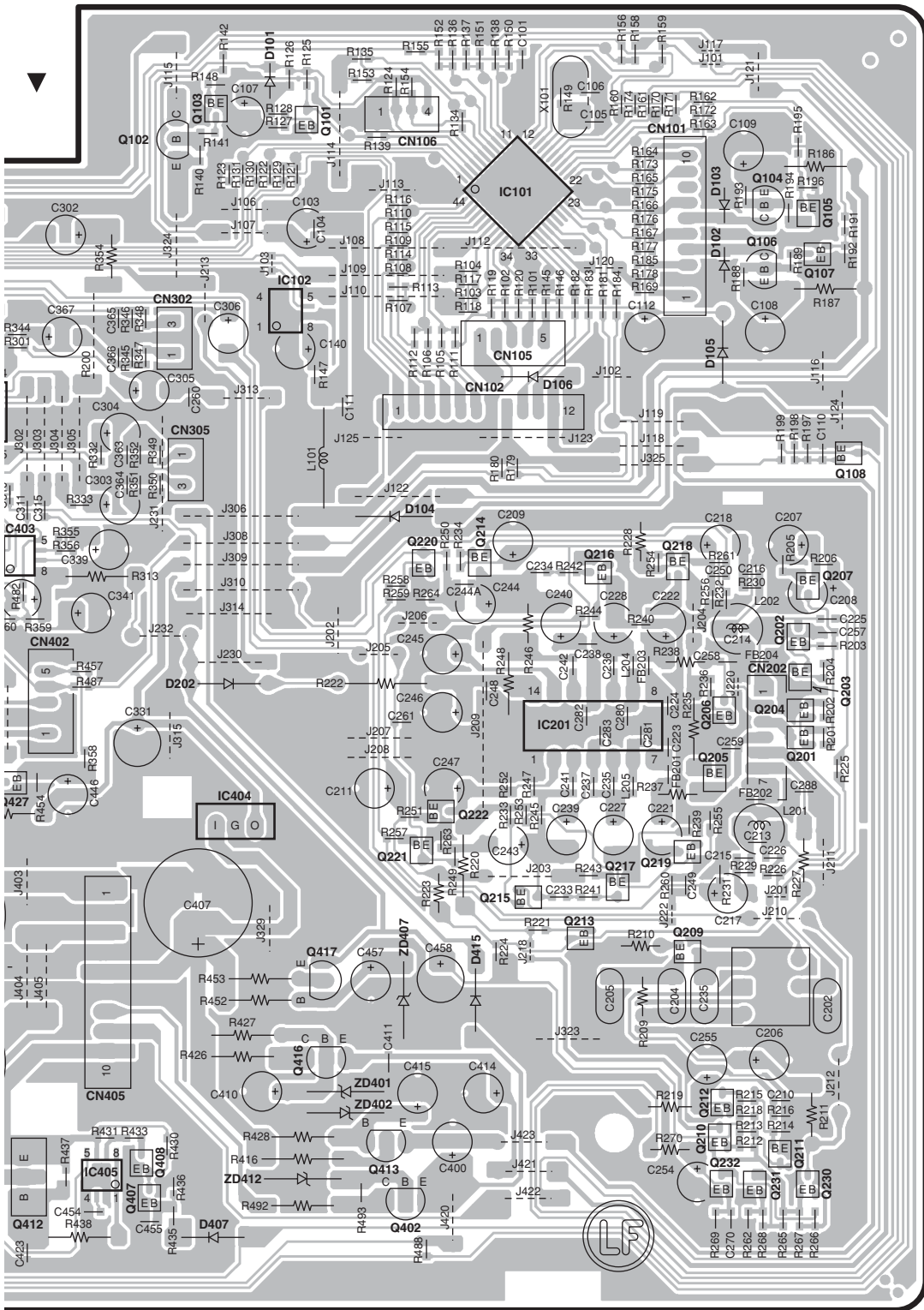


PHONE



AUX

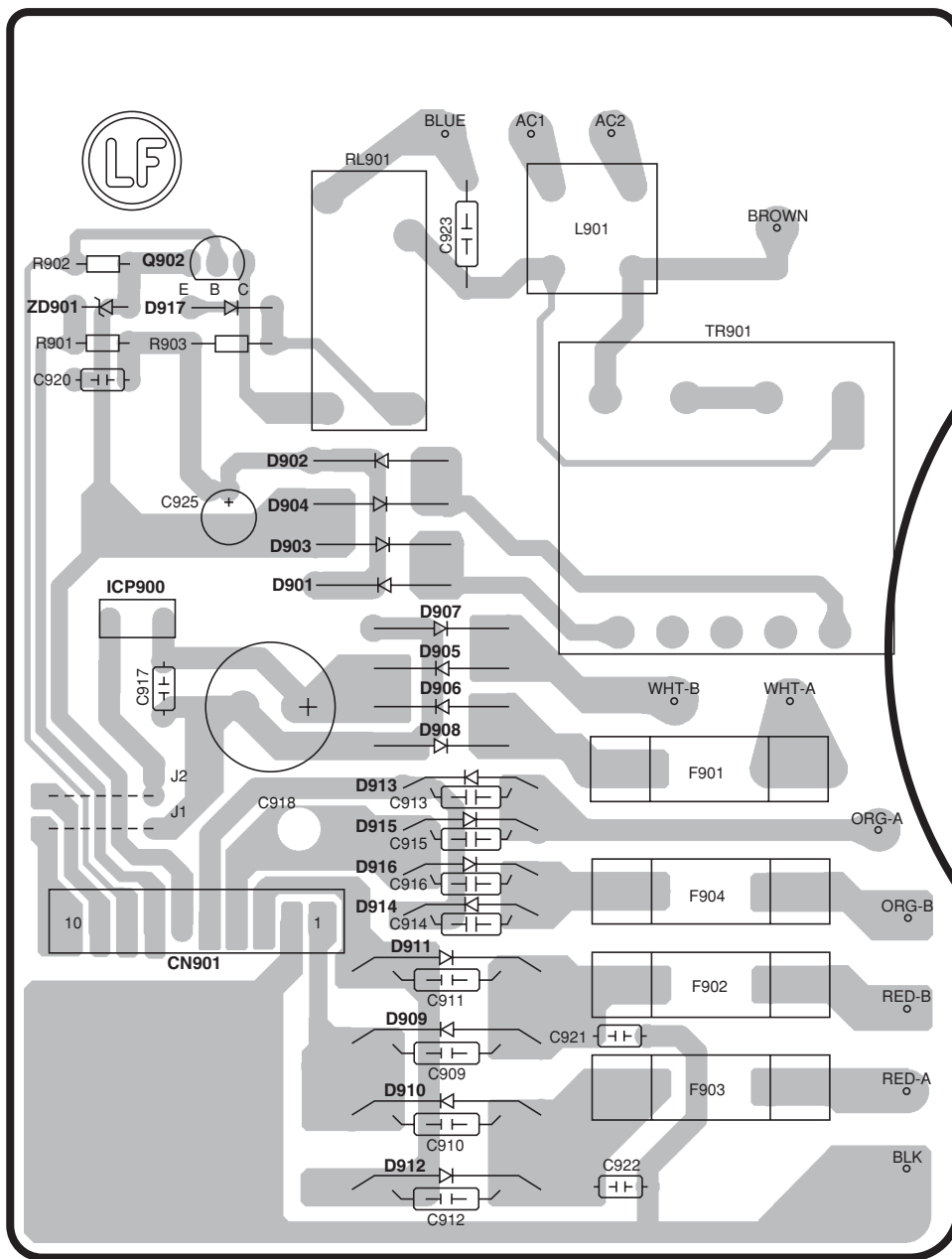




Refer to the schematic diagram for the values of resistors and capacitors.

RXD-M505USB/LS-M505 PC BOARD

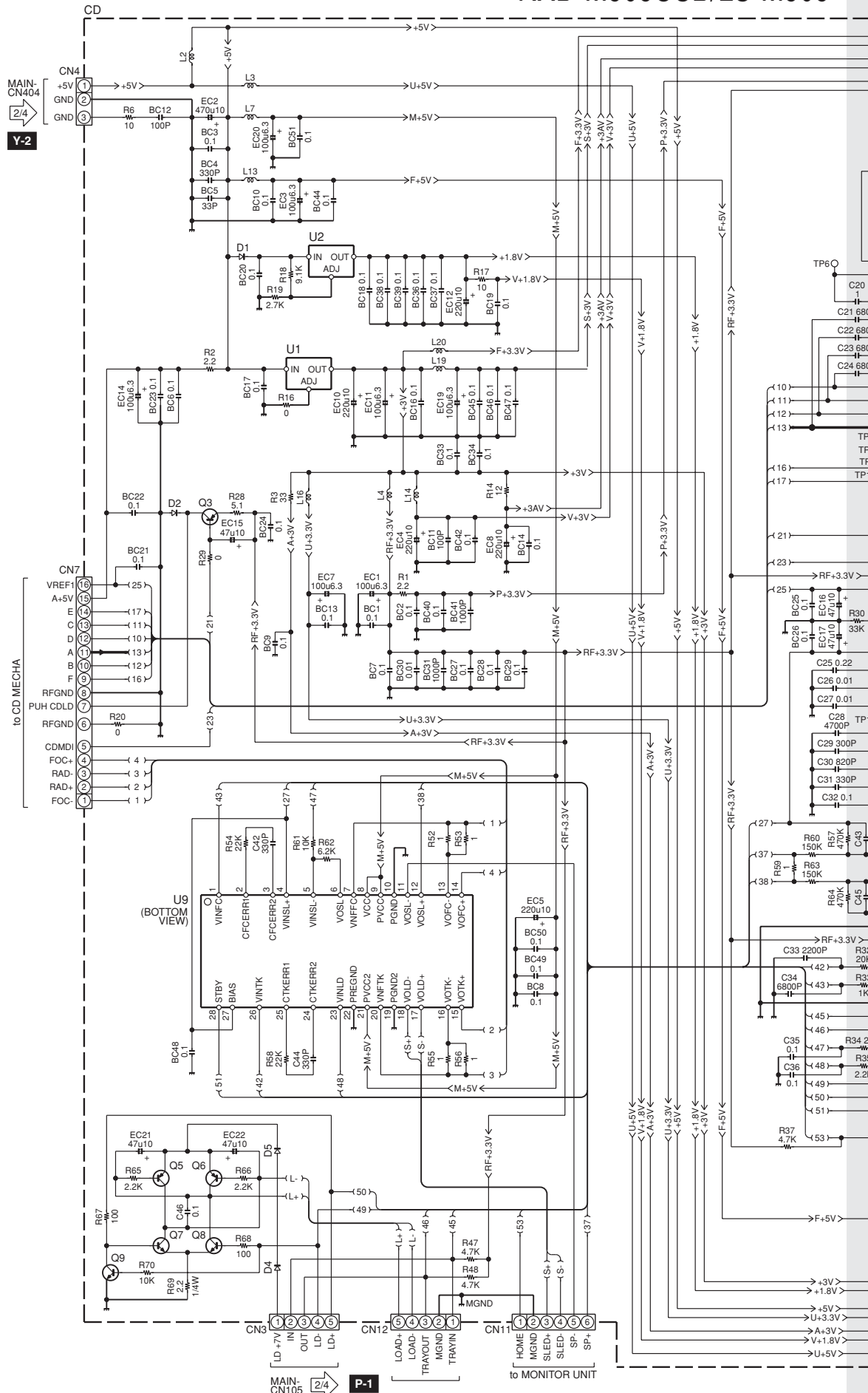
POWER



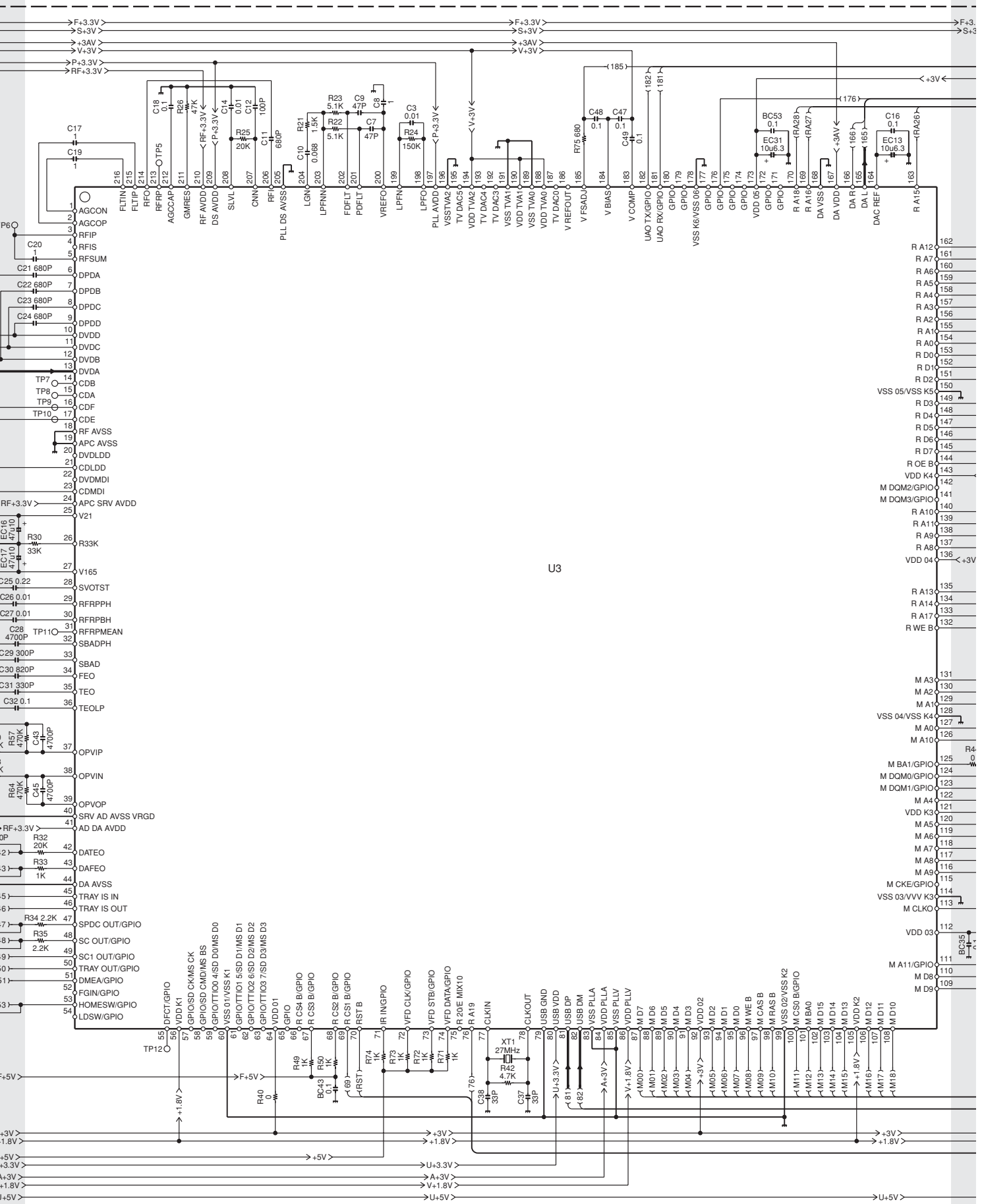
Refer to the schematic diagram for the values of resistors and capacitors.

RXD-M505USB/LS-M505

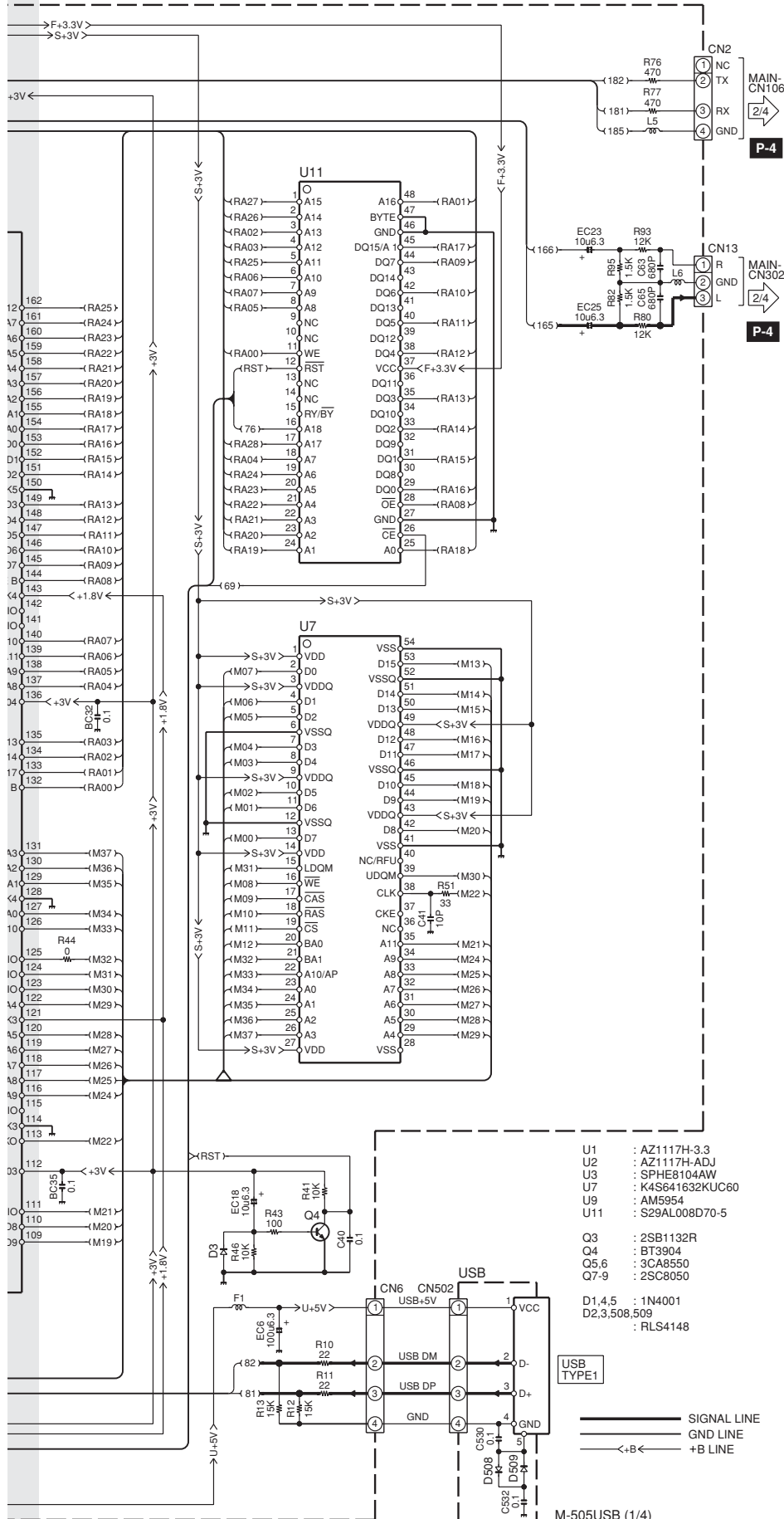
1
2
3
4
5
6
7



RXD-M505USB/LS-M505



RXD-M505USB/LS-M505



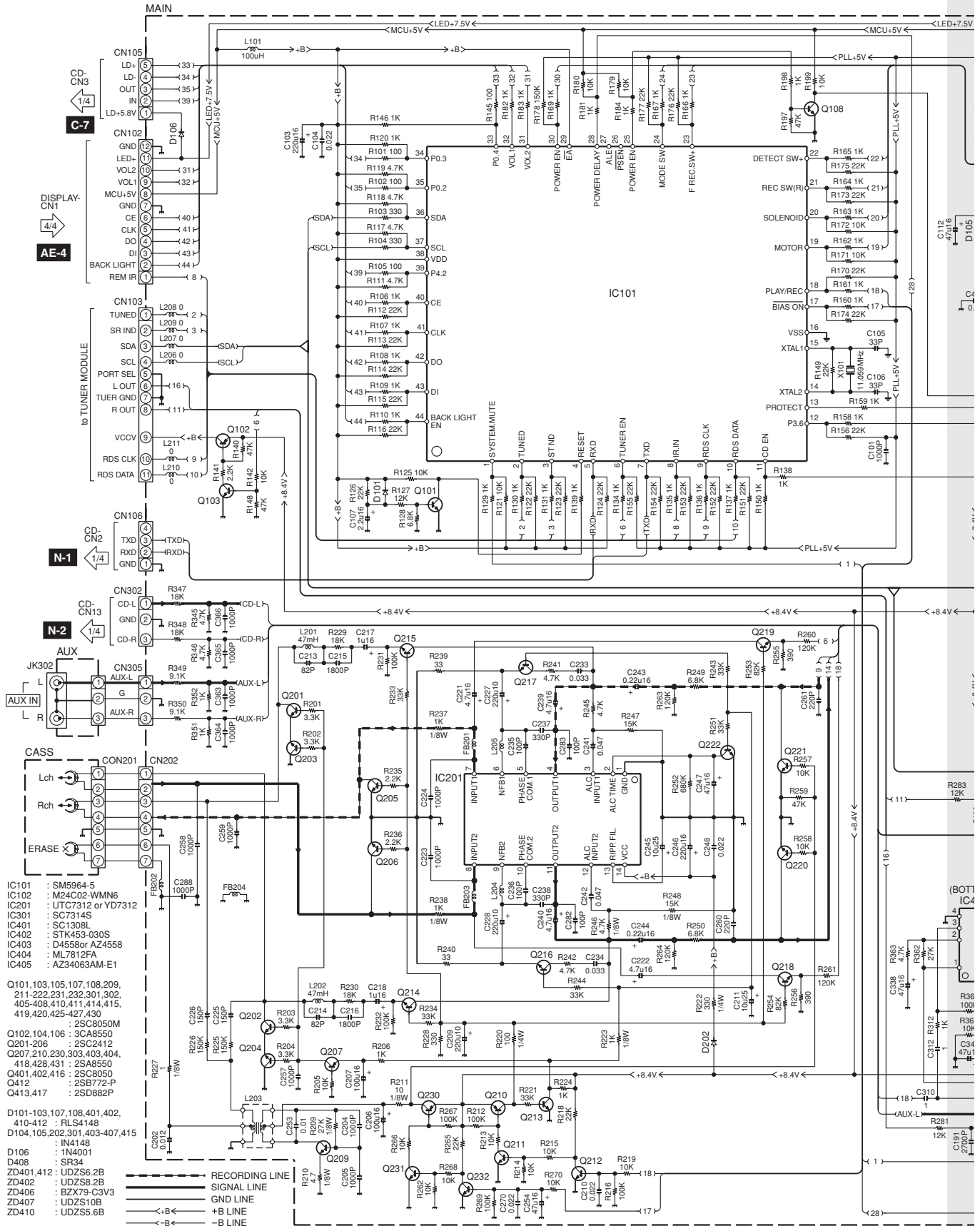
- U1 : AZ1117H-3.3
 - U2 : AZ1117H-ADJ
 - U3 : SPHE8104AW
 - U7 : K4S641632KUC60
 - U9 : AM5954
 - U11 : S29AL008D70-5
-
- Q3 : 2SB1132R
 - Q4 : BT3904
 - Q5,6 : 3CA8550
 - Q7-9 : 2SC8050
-
- D1,4,5 : 1N4001
 - D2,3,508,509 : RLS41448

CAUTION: For continued safety, replace safety critical components only with manufacturer's recommended parts (refer to parts list). Δ indicates safety critical components. For continued protection against risk of fire, replace only with same type and rating fuse(s). To reduce the risk of electric shock, leakage-current or resistance measurements shall be carried out (exposed parts are acceptably insulated from the supply circuit) before the appliance is returned to the customer.

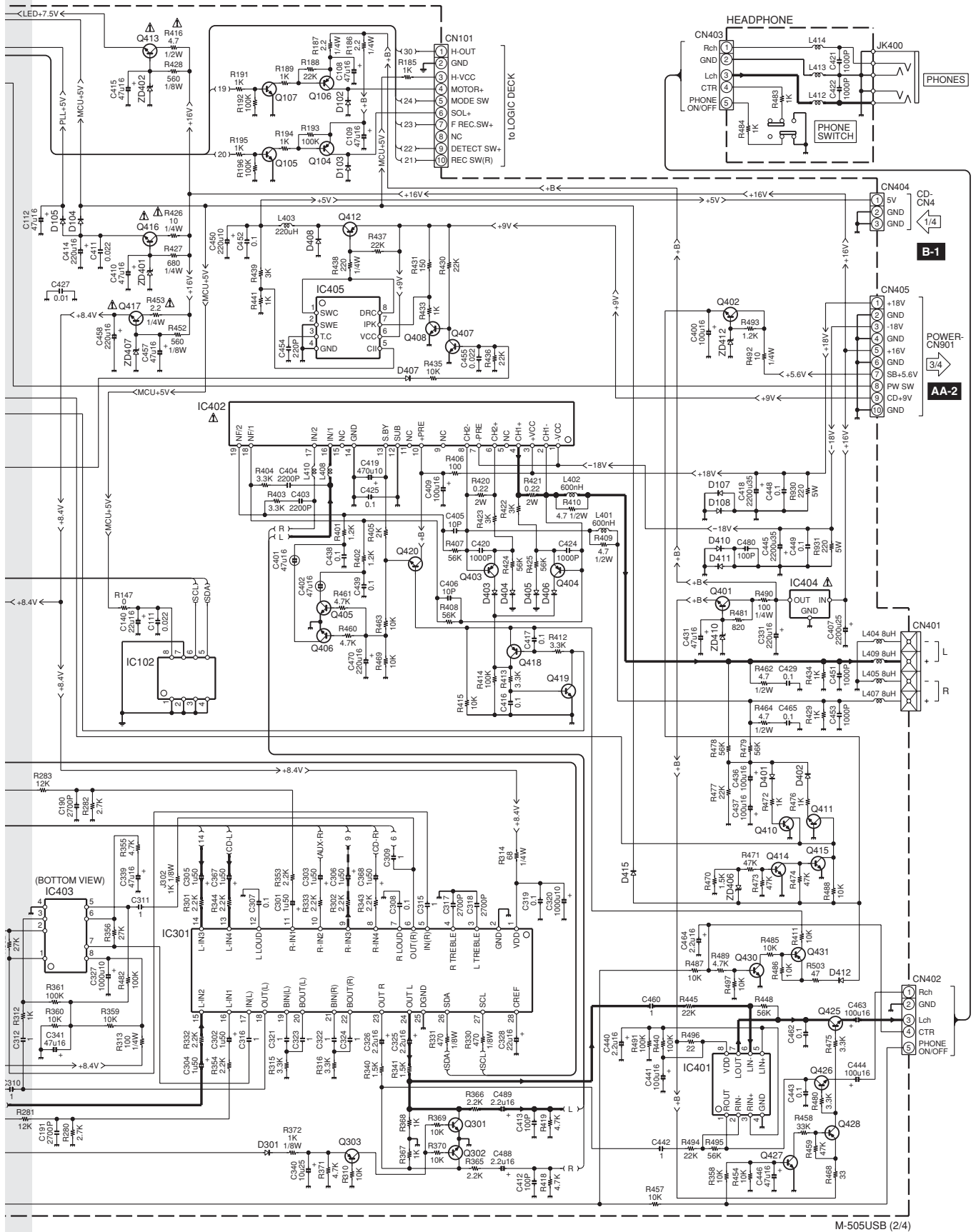
The DC voltage is an actual reading measured with a high impedance type voltmeter with no signal input. The measurement value may vary depending on the measuring instruments used or on the product.

M-505USB (1/4)

RXD-M505USB/LS-M505

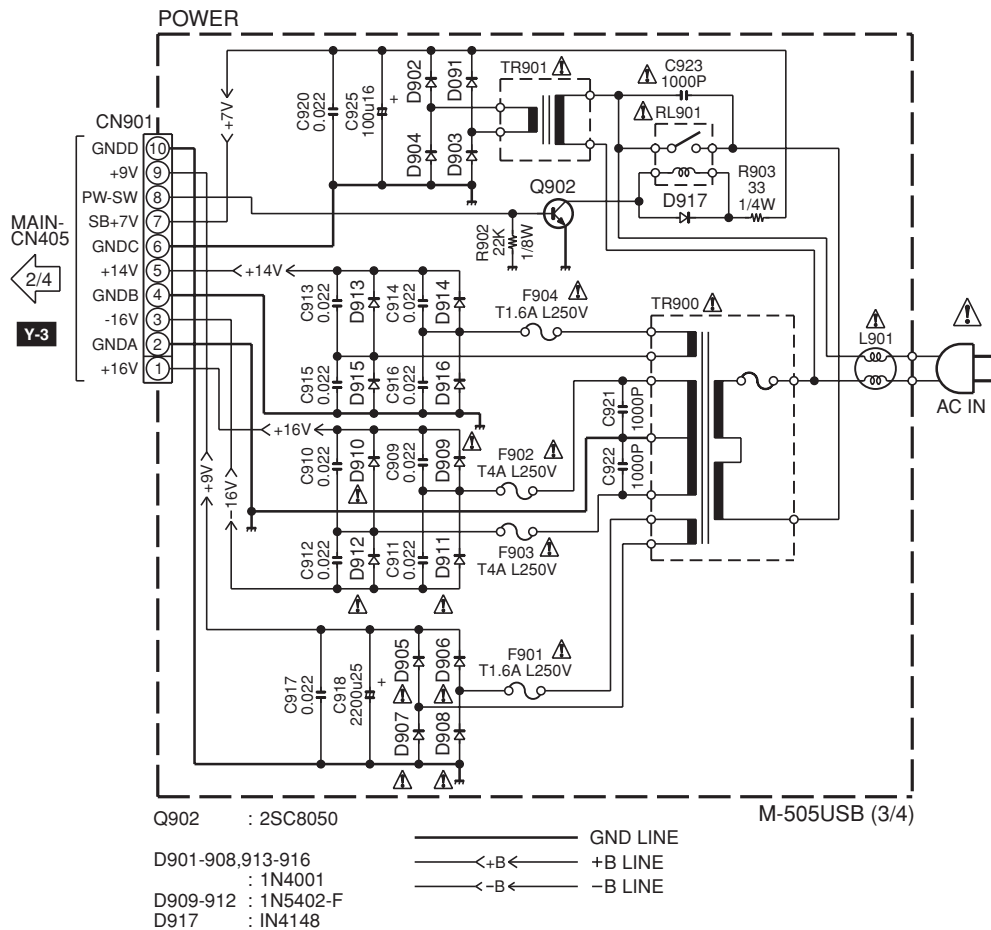


CAUTION: For continued safety, replace safety critical components only with manufacturer's recommended parts (refer to parts list). Δ indicates safety critical components. For continued protection against risk of fire, replace only with same type and rating fuse(s). To reduce the risk of electric shock, leakage-current or resistance measurements shall be carried out (exposed parts are acceptably insulated from the supply circuit) before the appliance is returned to the customer.



The DC voltage is an actual reading measured with a high impedance type voltmeter with no signal input. The measurement value may vary depending on the measuring instruments used or on the product.

RXD-M505USB/LS-M505



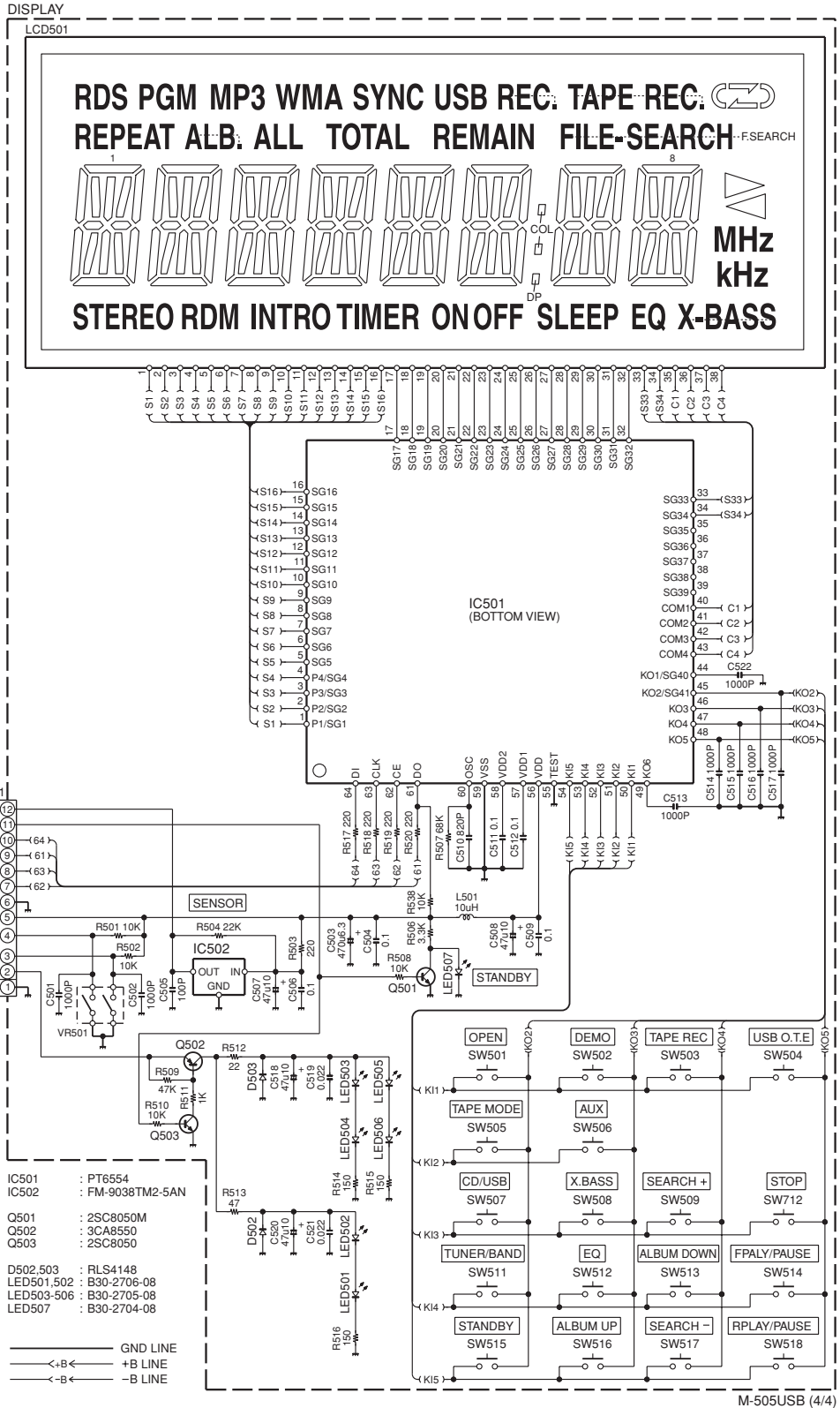
CAUTION: For continued safety, replace safety critical components only with manufacturer's recommended parts (refer to parts list). \triangle indicates safety critical components. For continued protection against risk of fire, replace only with same type and rating fuse(s). To reduce the risk of electric shock, leakage-current or resistance measurements shall be carried out (exposed parts are acceptably insulated from the supply circuit) before the appliance is returned to the customer.

The DC voltage is an actual reading measured with a high impedance type voltmeter with no signal input. The measurement value may vary depending on the measuring instruments used or on the product.

RXD-M505USB/LS-M505

1
2
3
4
5
6
7

		COMO1	COMO2	COMO3	COMO4
PIN01	SEG01	1F	1G	1E	STEREO
PIN02	SEG02	1H	1I	1M	REPEAT
PIN03	SEG03	1A	1J	1L	1D
PIN04	SEG04	1B	1K	1C	PGM
PIN05	SEG05	2F	2G	2E	RDM
PIN06	SEG06	2H	2I	2M	ALB.
PIN07	SEG07	2A	2J	2L	2D
PIN08	SEG08	2B	2K	2C	RDS
PIN09	SEG09	3F	3G	3E	INTRO
PIN10	SEG10	3H	3I	3M	ALL
PIN11	SEG11	3A	3J	3L	3D
PIN12	SEG12	3B	3K	3C	MP3
PIN13	SEG13	4F	4G	4E	TIMER
PIN14	SEG14	4H	4I	4M	TOTAL
PIN15	SEG15	4A	4J	4L	4D
PIN16	SEG16	4B	4K	4C	WMA
PIN17	SEG17	5F	5G	5E	ON
PIN18	SEG18	5H	5I	5M	REMAIN
PIN19	SEG19	5A	5J	5L	5D
PIN20	SEG20	5B	5K	5C	SYNC
PIN21	SEG21	6F	6G	6E	OFF
PIN22	SEG22	6H	6I	6M	USB
PIN23	SEG23	6A	6J	6L	6D
PIN24	SEG24	6B	6K	6C	DP
PIN25	SEG25	7F	7G	7E	COL
PIN26	SEG26	7H	7I	7M	SLEEP
PIN27	SEG27	7A	7J	7L	7D
PIN28	SEG28	7B	7K	7C	F.SEARCH
PIN29	SEG29	8F	8G	8E	REC.
PIN30	SEG30	8H	8I	8M	EQ
PIN31	SEG31	8A	8J	8L	8D
PIN32	SEG32	8B	8K	8C	X-BASS
PIN33	SEG33	kHz	MHz	▶◀	
PIN34	SEG34	⏪	⏩	⏸	TAPE REC.
PIN35	COM01	COMO1			
PIN36	COM02		COMO2		
PIN37	COM03			COMO3	
PIN38	COM04				COMO4



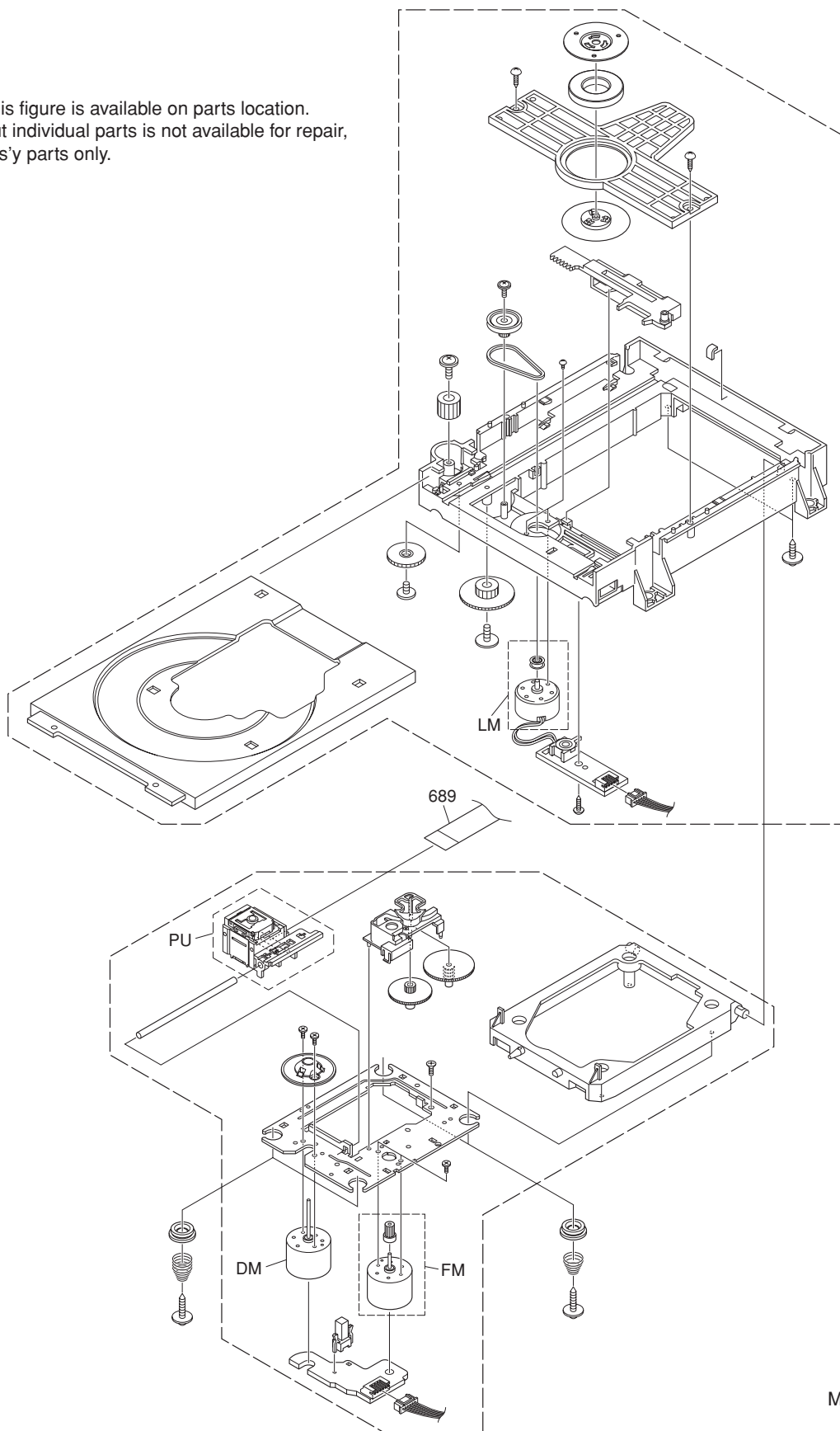
CAUTION: For continued safety, replace safety critical components only with manufacturer's recommended parts (refer to parts list). Δ indicates safety critical components. For continued protection against risk of fire, replace only with same type and rating fuse(s). To reduce the risk of electric shock, leakage-current or resistance measurements shall be carried out (exposed parts are acceptably insulated from the supply circuit) before the appliance is returned to the customer.

The DC voltage is an actual reading measured with a high impedance type voltmeter with no signal input. The measurement value may vary depending on the measuring instruments used or on the product.

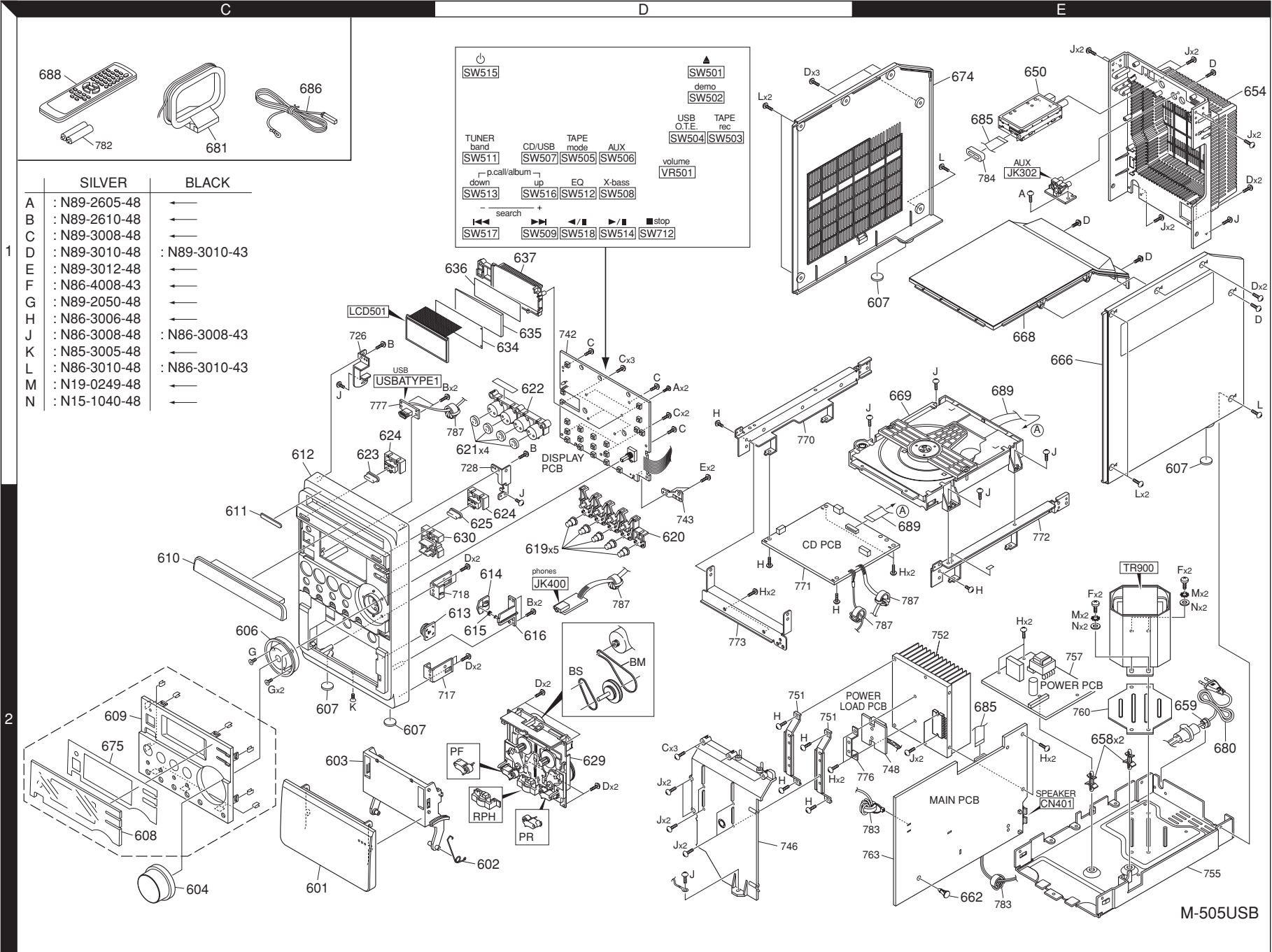
RXD-M505USB/LS-M505

EXPLODED VIEW (MECHANISM)

This figure is available on parts location.
But individual parts is not available for repair,
ass'y parts only.



M-505USB



EXPLODED VIEW (UNIT)

RXD-M505USB/LS-M505

M-505USB

* New parts

Parts without **Parts No.** are not supplied.Les articles non mentionnés dans le **Parts No.** ne sont pas fournis.Teile ohne **Parts No.** werden nicht geliefert.

①

Ref. No.	Add-ress	New Parts	Parts No.	Description	Desti-nation	Re-marks
RXD-M505USB-B/M505USB-S/LS-M505-B/M505-S						
-		*	B60-5693-08	I/B (E.X) (ENGLI		
-		*	B60-5694-08	I/B (E.) (5 LANG		
-		*	T19-0503-08	SPEAKER BOX SI	E	
-		*	T19-0504-08	SPEAKER BOX BL	S	
601	2C	*	A53-2490-08	CASSETTE DOOR,	S	
601	2C	*	A53-2492-08	CASSETTE DOOR,	B	
602	2D	*	G01-4382-08	CASS DOOR SPRI		
603	2C	*	A53-2491-08	CASSETTE DOOR	S	
603	2C	*	A53-2493-08	CASSETTE DOOR	B	
604	2C	*	K29-8628-08	VOLUME KNOB,AB	S	
604	2C	*	K29-8643-08	VOLUME KNOB,AB	B	
606	2C	*	B07-2764-08	VOLUME RING,AB	S	
606	2C	*	B07-2766-08	VOLUME RING,AB	B	
607	2C,1E	*	J02-1590-08	RUBBER FOOT		
608	2C	*	B10-5636-08	DISPLAY LENS,S		
609	2C	*	A21-5520-08	PANEL COVER,SP		
610	2C	*	A29-1280-08	CD DOOR,SILKSC	S	
610	2C	*	A29-1284-08	CD DOOR,SPRAY	B	
611	2C	*	B43-0336-04	KENWOOD BADGE		
612	1C	*	A60-2529-08	FRONT CANINET,	S	
612	1C	*	A60-2532-08	FRONT CANINET,	B	
613	2D	*	D39-0364-08	DAMPER GEAR B4		
614	2D	*	J52-0048-08	CASS LID LATCH		
615	2D	*	G01-4383-08	CASS LATCH SPR		
616	2D	*	J52-0049-08	CASS LID LATCH		
619	2D	*	K29-8649-08	STOP KNOB COVE		
620	2D	*	K29-8626-08	EQ KNOB/STOP K		
621	1D	*	K29-8644-08	FUNCTION KNOB		
622	1D	*	K29-8625-08	FUNCTION KNOB		
623	1C	*	K29-8647-08	STANDBY/ON KNO	S	
623	1C	*	K29-8648-08	STANDBY/ON KNO	B	
624	1C,2D	*	K29-8627-08	STANDBY/ON KNO		
625	2D	*	K29-8645-08	CD DOOR OPEN K	S	
625	2D	*	K29-8646-08	CD DOOR OPEN K	B	
629	2D	*	D40-1875-08	CASSETTE DECK		
630	2D	*	K29-8642-08	DEMO KNOB,ABS		
634	1D	*	B11-1637-08	LCD FILTER		
635	1D	*	J19-6482-08	LIGHT GUIDE PM		
636	1D	*	B11-1636-08	LIGHT GUIDE PA		
637	1D	*	J19-6478-08	LIGHT GUIDE BK		
650	1E	*	W02-4673-08	TUNER MODULE K		
654	1E	*	A80-4576-08	REAR CABINET H	S	
654	1E	*	A80-4577-08	REAR CABINET B	B	
658	2E	*	J19-6484-08	LOCKING PCB SU		
659	2E	*	J42-0361-08	STRAIN RELIEF		
662	2E	*	J19-6483-08	LOCKING PCB SU		
666	1E	*	A02-3156-08	RIGHT-SIDE PLA	S	
666	1E	*	A02-3157-08	RIGHT-SIDE PLA	B	
668	1E	*	A02-3152-08	TOP CABINET HI	S	
668	1E	*	A02-3153-08	TOP CABINET BL	B	
669	1E	*	D40-1874-08	CD MECHANISM D		
674	1E	*	A02-3154-08	LEFT-SIDE PLAT	S	
674	1E	*	A02-3155-08	LEFT-SIDE PLAT	B	

L: Scandinavia K: USA P: Canada R: Mexico C: China I: Malaysia
 Y: PX(Far East,Hawaii) T: England E: Europe G: Germany V: China(Shanghai)
 Y: AAFES(Europe) X: Australia Q: Russia H: Korea M: Other Areas △ Indicates safety critical components.

* New parts

Parts without **Parts No.** are not supplied.Les articles non mentionnés dans le **Parts No.** ne sont pas fournis.Teile ohne **Parts No.** werden nicht geliefert.

②

Ref. No.	Add-ress	New Parts	Parts No.	Description	Desti-nation	Re-marks
675	2C	*	J69-0242-08	M505 DOUBLE SI		
680	2E	*	E30-7392-08	AC CORD VDE 23	E	
680	2E	*	E30-7393-08	AC CORD SAA PH	X	
681	1C	*	T90-0926-08	AM ANT 5T 1300		
685	1E,2E	*	E35-4009-08	FFC CABLE 11P		
686	1C	*	T90-0925-08	FM WIRE ANTENN		
688	1C	*	A70-1727-08	REMOTE CONTROL		
689	1E,2E	*	E35-4010-08	FFC CABLE 16PI		
TR900	2E	*	L07-3378-08	POWER TRANSFOR	E	
TR900	2E	*	L07-3379-08	POWER TRANSFOR	X	
ELECTRIC PARTS						
LED501,2		*	B30-2706-08	LED DIA 3MM 1L		1316-103450000
LED503-6		*	B30-2705-08	LED DIA:3MM BL		1316-103412000
LED507		*	B30-2704-08	LED DIA 3MM RE		1316-039340000
BC1-3			CK73GB1H103K	CHIP C		0.010UF K
BC4			CC73GCH1H331J	CHIP C		330PF J
BC5			CC73GCH1H330J	CHIP C		33PF J
BC6 10			CK73GB1H104K	CHIP C		0.10UF K
BC11,12			CC73GCH1H101J	CHIP C		100PF J
BC13,14			CK73GB1H104K	CHIP C		0.10UF K
BC16-30			CK73GB1H104K	CHIP C		0.10UF K
BC31			CK73GB1H102K	CHIP C		1000PF K
BC32-40			CK73GB1H104K	CHIP C		0.10UF K
BC41			CK73GB1H102K	CHIP C		1000PF K
BC42-51			CK73GB1H104K	CHIP C		0.10UF K
BC53			CK73GB1H104K	CHIP C		0.10UF K
C5			CK73GB1H103K	CHIP C		0.010UF K
C7			CC73GCH1H470J	CHIP C		47PF J
C8			CK73GB1C105K	CHIP C		1.0UF K
C9			CC73GCH1H470J	CHIP C		47PF J
C10			CK73GB1H683K	CHIP C		0.068UF K
C11			CC73GCH1H681J	CHIP C		680PF J
C12			CC73GCH1H101J	CHIP C		100PF J
C13,14			CK73GB1H103K	CHIP C		0.010UF K
C15			CK73GB1C105K	CHIP C		1.0UF K
C16			CK73GB1H104K	CHIP C		0.10UF K
C18			CK73GB1H104K	CHIP C		0.10UF K
C19,20			CK73GB1C105K	CHIP C		1.0UF K
C21-24			CC73GCH1H681J	CHIP C		680PF J
C25			CK73GB1C224K	CHIP C		0.22UF K
C26,27			CK73GB1H103K	CHIP C		0.010UF K
C28			CK73GB1H473K	CHIP C		0.047UF K
C29		*	C90-5860-08	CHIP C		300PF J
C30		*	CC73GCH1H821J	CHIP C		820PF J
C31			CC73GCH1H331J	CHIP C		330PF J
C32			CK73GB1H104K	CHIP C		0.10UF K
C33			CK73GB1H222K	CHIP C		2200PF K
C34			CK73GB1H682K	CHIP C		6800PF K
C35,36			CK73GB1H104K	CHIP C		0.10UF K
C37,38			CC73GCH1H330J	CHIP C		33PF J
C40			CK73GB1H104K	CHIP C		0.10UF K
C41			CC73GCH1H100J	CHIP C		10PF J
C42			CC73GCH1H331J	CHIP C		330PF J
C43			CK73GB1H472K	CHIP C		4700PF K

L: Scandinavia K: USA P: Canada R: Mexico C: China I: Malaysia
 Y: PX(Far East,Hawaii) T: England E: Europe G: Germany V: China(Shanghai)
 Y: AAFES(Europe) X: Australia Q: Russia H: Korea M: Other Areas △ Indicates safety critical components.

* New parts

Parts without **Parts No.** are not supplied.

Les articles non mentionnes dans le **Parts No.** ne sont pas fournis.

Teile ohne **Parts No.** werden nicht geliefert.

3

Ref. No.	Add-ress	New Parts	Parts No.	Description	Desti-nation	Re-marks
C44			CC73GCH1H331J	CHIP C 330PF J		
C45			CK73GB1H472K	CHIP C 4700PF K		
C46 49			CK73GB1H104K	CHIP C 0.10UF K		
C63			CC73GCH1H681J	CHIP C 680PF J		
C65			CC73GCH1H681J	CHIP C 680PF J		
C101			CK73GB1H102K	CHIP C 1000PF K		
C103			CD04BJ1C221M	ELECTRO 220UF 16WV		
C104			CK73GB1H223K	CHIP C 0.022UF K		
C105,106			CC73GCH1H330J	CHIP C 33PF J		
C107			CD04BJ1H2R2M	ELECTRO 2.2UF 50WV		
C108,109			CD04BJ1C470M	ELECTRO 47UF 16WV		
C111			CK73GB1H223K	CHIP C 0.022UF K		
C112			CD04BJ1C470M	ELECTRO 47UF 16WV		
C140			CD04BJ1C220M	ELECTRO 22UF 16WV		
C190,191			CK73GB1H272J	CHIP C 2700PF J		
C202			CQ93FMG1H123J	MYLAR 0.012UF J		
C204,205		*	C90-5859-08	MYLAR 0.001UF K		
C206,207			CD04BJ1C101M	ELECTRO 100UF 16WV		
C209			CD04BJ1A221M	ELECTRO 220UF 10WV		
C210			CK73GB1H223K	CHIP C 0.022UF K		
C211			CD04BJ1E100M	ELECTRO 10UF 25WV		
C213,214			CC73GCH1H820J	CHIP C 82PF J		
C215,216			CK73GB1H182K	CHIP C 1800PF K		
C217,218			CD04BJ1H010M	ELECTRO 1.0UF 50WV		
C221,222			CD04AT1C4R7M	ELECTRO 4.7UF 16WV		
C223,224			CK73GB1H102K	CHIP C 1000PF K		
C225,226			CC73GCH1H151J	CHIP C 150PF J		
C227,228			CD04BJ1A221M	ELECTRO 220UF 10WV		
C233,234			CK73GB1H333K	CHIP C 0.033UF K		
C235,236			CC73GCH1H101J	CHIP C 100PF J		
C237,238			CC73GCH1H331J	CHIP C 330PF J		
C239,240			CD04AT1C4R7M	ELECTRO 4.7UF 16WV		
C241,242			CK73GB1C473J	CHIP C 0.047UF J		
C243,244			CD04BJ1HR22M	ELECTRO 0.22UF 50WV		
C245			CD04BJ1E100M	ELECTRO 10UF 25WV		
C246			CD04BJ1C221M	ELECTRO 220UF 16WV		
C247			CD04BJ1C470M	ELECTRO 47UF 16WV		
C248			CK73GB1H223K	CHIP C 0.022UF K		
C253		*	C90-5864-08	CHIP C 0.01UF K		
C254			CD04BJ1C470M	ELECTRO 47UF 16WV		
C257-259			CK73GB1H102K	CHIP C 1000PF K		
C260,261			CC73GCH1H221J	CHIP C 220PF J		
C270			CK73GB1H223K	CHIP C 0.022UF K		
C282,283			CC73GCH1H101J	CHIP C 100PF J		
C288			CK73GB1H102K	CHIP C 1000PF K		
C301-306			CD04BJ1H010M	ELECTRO 1.0UF 50WV		
C307,308			CK73GB1H104K	CHIP C 0.10UF K		
C309-312			CK73GB1C105K	CHIP C 1.0UF K		
C315,316			CK73GB1C105K	CHIP C 1.0UF K		
C317,318			CK73GB1H272J	CHIP C 2700PF J		
C319			CK73GB1H104K	CHIP C 0.10UF K		
C320			CD04BJ1A102M	ELECTRO 1000UF 10WV		
C321-324			CK73GB1C105K	CHIP C 1.0UF K		
C325,326			CD04BJ1H2R2M	ELECTRO 2.2UF 50WV		
C327			CD04BJ1A102M	ELECTRO 1000UF 10WV		

L: Scandinavia K: USA P: Canada R: Mexico C: China I: Malaysia
 Y: PX(Far East,Hawaii) T: England E: Europe V: China(Shanghai)
 Y: AAFES(Europe) X: Australia Q: Russia H: Korea M: Other Areas
 ΔIndicates safety critical components.

* New parts

Parts without **Parts No.** are not supplied.

Les articles non mentionnes dans le **Parts No.** ne sont pas fournis.

Teile ohne **Parts No.** werden nicht geliefert.

4

Ref. No.	Add-ress	New Parts	Parts No.	Description	Desti-nation	Re-marks
C328			CD04BJ1C220M	ELECTRO 22UF 16WV		
C331			CD04BJ1C221M	ELECTRO 220UF 16WV		
C338,339			CD04BJ1C470M	ELECTRO 47UF 16WV		
C340			CD04BJ1E100M	ELECTRO 10UF 25WV		
C341			CD04BJ1C470M	ELECTRO 47UF 16WV		
C363-366			CK73GB1H102K	CHIP C 1000PF K		
C367,368			CD04BJ1H010M	ELECTRO 1.0UF 50WV		
C400			CD04BJ1C101M	ELECTRO 100UF 16WV		
C401,402		*	CD04AU1E470M	NP-ELEC 47UF 25WV		
C403,404			CK73GB1H222K	CHIP C 2200PF K		
C405,406			CC73GCH1H100J	CHIP C 10PF J		
C407			CD04BJ1E222M	ELECTRO 2200UF 25WV		
C409			CD04BJ1C101M	ELECTRO 100UF 16WV		
C410			CD04BJ1C470M	ELECTRO 47UF 16WV		
C411			CK73GB1H223K	CHIP C 0.022UF K		
C412,413			CC73GCH1H101J	CHIP C 100PF J		
C414			CD04BJ1C221M	ELECTRO 220UF 16WV		
C415			CD04BJ1C470M	ELECTRO 47UF 16WV		
C416,417			CK73GB1H104K	CHIP C 0.10UF K		
C418			CD04BJ1V222M	ELECTRO 2200UF 35WV		
C419			CD04BJ1A471M	ELECTRO 470UF 10WV		
C420-422			CK73GB1H102K	CHIP C 1000PF K		MAIN PHONE
C421,422			CK73GB1H102K	CHIP C 1000PF K		
C424			CK73GB1H102K	CHIP C 1000PF K		
C425			CK73GB1H104K	CHIP C 0.10UF K		
C427			CK73GB1H103K	CHIP C 0.010UF K		
C429			CQ93FMG1H104K	MYLAR 0.10UF K		
C431			CD04BJ1C470M	ELECTRO 47UF 16WV		
C436,437			CD04BJ1C101M	ELECTRO 100UF 16WV		
C438,439			CK73GB1H104K	CHIP C 0.10UF K		
C440			CD04BJ1H2R2M	ELECTRO 2.2UF 50WV		
C441			CD04BJ1C101M	ELECTRO 100UF 16WV		
C442			CK73GB1C105K	CHIP C 1.0UF K		
C443			CK73GB1H104K	CHIP C 0.10UF K		
C444			CD04BJ1C101M	ELECTRO 100UF 16WV		
C445			CD04BJ1V222M	ELECTRO 2200UF 35WV		
C446			CD04BJ1C470M	ELECTRO 47UF 16WV		
C448,449			CK73GB1H104K	CHIP C 0.10UF K		
C450			CD04BJ1C221M	ELECTRO 220UF 16WV		
C451			CK73GB1H102K	CHIP C 1000PF K		
C452			CK73GB1H104K	CHIP C 0.10UF K		
C453			CK73GB1H102K	CHIP C 1000PF K		
C454			CC73GCH1H221J	CHIP C 220PF J		
C455			CK73GB1H223K	CHIP C 0.022UF K		
C457			CD04BJ1C470M	ELECTRO 47UF 16WV		
C458			CD04BJ1C221M	ELECTRO 220UF 16WV		
C460			CK73GB1C105K	CHIP C 1.0UF K		
C462			CK73GB1H104K	CHIP C 0.10UF K		
C463			CD04BJ1C101M	ELECTRO 100UF 16WV		
C464			CD04BJ1H2R2M	ELECTRO 2.2UF 50WV		
C465			CQ93FMG1H104K	MYLAR 0.10UF K		
C470			CD04BJ1C221M	ELECTRO 220UF 16WV		
C480			CC73GCH1H101J	CHIP C 100PF J		
C488,489			CD04BJ1H2R2M	ELECTRO 2.2UF 50WV		
C501,502			CK73GB1H102K	CHIP C 1000PF K		

L: Scandinavia K: USA P: Canada R: Mexico C: China I: Malaysia
 Y: PX(Far East,Hawaii) T: England E: Europe V: China(Shanghai)
 Y: AAFES(Europe) X: Australia Q: Russia H: Korea M: Other Areas
 ΔIndicates safety critical components.

PARTS LIST

RXD-M505USB/LS-M505

* New parts

Parts without **Parts No.** are not supplied.Les articles non mentionnés dans le **Parts No.** ne sont pas fournis.Teile ohne **Parts No.** werden nicht geliefert.

5

Ref. No.	Add-ress	New Parts	Parts No.	Description	Desti-nation	Re-marks
C503			CD04BJ1C221M	ELECTRO 220UF 16WV		
C504			CK73GB1H104K	CHIP C 0.10UF K		
C505			CC73GCH1H101J	CHIP C 100PF J		
C506			CK73GB1H104K	CHIP C 0.10UF K		
C507,508			CD04BJ1A470M	ELECTRO 47UF 10WV		
C509			CK73GB1H104K	CHIP C 0.10UF K		
C510			CC73GCH1H821J	CHIP C 820PF J		
C511,512			CK73GB1H104K	CHIP C 0.10UF K		
C513-517			CK73GB1H102K	CHIP C 1000PF K		
C518			CD04BJ1A470M	ELECTRO 47UF 10WV		
C519			CK73GB1H223K	CHIP C 0.022UF K		
C520			CD04BJ1A470M	ELECTRO 47UF 10WV		
C521			CK73GB1H223K	CHIP C 0.022UF K		
C522			CK73GB1H102K	CHIP C 1000PF K		
C530			CK73GB1H104K	CHIP C 0.10UF K	USB	
C532			CK73GB1H104K	CHIP C 0.10UF K	USB	
C909-917			CK73GB1H222K	CHIP C 2200PF K		
C918			CD04BJ1E222M	ELECTRO 2200UF 25WV		
C920			CK73GB1H222K	CHIP C 2200PF K		
C921,922			CK73GB1H102K	CHIP C 1000PF K		
△ C923		*	C91-1736-08	FILM 0.001UF 250WV		
C925			CD04BJ1C101M	ELECTRO 100UF 16WV		
EC1			CE32BJ1C101M	CHIP EL 100UF 16WV		
EC2			CD04BJ1A471M	ELECTRO 470UF 10WV		
EC3			CE32BJ1C101M	CHIP EL 100UF 16WV		
EC4,5			CD04BJ1A221M	ELECTRO 220UF 10WV		
EC6,7			CE32BJ1C101M	CHIP EL 100UF 16WV		
EC8			CD04BJ1A221M	ELECTRO 220UF 10WV		
EC10			CD04BJ1A221M	ELECTRO 220UF 10WV		
EC11			CE32BJ1C101M	CHIP EL 100UF 16WV		
EC12			CD04BJ1A221M	ELECTRO 220UF 10WV		
EC13			CD04BJ1H100M	ELECTRO 10UF 50WV		
EC14			CE32BJ1C101M	CHIP EL 100UF 16WV		
EC15-17			CD04BJ1H470M	ELECTRO 47UF 50WV		
EC18			CD04BJ1H100M	ELECTRO 10UF 50WV		
EC19,20			CE32BJ1C101M	CHIP EL 100UF 16WV		
EC21,22			CD04BJ1A470M	ELECTRO 47UF 10WV		
EC23			CD04BJ1H100M	ELECTRO 10UF 50WV		
EC25			CD04BJ1H100M	ELECTRO 10UF 50WV		
EC31			CD04BJ1H100M	ELECTRO 10UF 50WV		
CN7		*	E41-1893-08	FFC CONNECTOR 3106-101611010		
CN103		*	E41-1894-08	CONNECTOR, FFC 3106-121111020		
CN401		*	E70-1034-08	SPEAKER TERMIN 3401-000000270		
USBATYPE1	2E	*	E58-0096-08	USB JACK USB-1 3209-040200000		
JK302	1C	*	E63-1426-08	RCA JACK RED/W 3204-020183020		
JK400	2D	*	E11-1012-08	PHONE JACK CK- 3202-110135000		
△ F901		*	F50-0364-08	FUSE TSD 1.6A 2001-160250130		
△ F902,903		*	F50-0365-08	FUSE TSD 4A 25 2001-400250100		
△ F904		*	F50-0364-08	FUSE TSD 1.6A 2001-160250130		
F1		*	L92-0863-08	CH-FERRITE BEA 2721-601030000		
FB201-204		*	L92-0864-08	CH-FERRITE BEA 2721-701020000		
L2-7		*	L92-0863-08	CH-FERRITE BEA 2721-601030000		
L13,14		*	L92-0863-08	CH-FERRITE BEA 2721-601030000		
L16		*	L92-0863-08	CH-FERRITE BEA 2721-601030000		

L: Scandinavia K: USA P: Canada R: Mexico C: China I: Malaysia USB: USB PCB
 Y: PX(Far East,Hawaii) T: England E: Europe G: Germany V: China(Shanghai)
 Y: AAFES(Europe) X: Australia Q: Russia H: Korea M: Other Areas △Indicates safety critical components.

* New parts

Parts without **Parts No.** are not supplied.Les articles non mentionnés dans le **Parts No.** ne sont pas fournis.Teile ohne **Parts No.** werden nicht geliefert.

6

Ref. No.	Add-ress	New Parts	Parts No.	Description	Desti-nation	Re-marks
L19,20		*	L92-0863-08	CH-FERRITE BEA 2721-601030000		
L101		*	L40-1011-58	RADIAL AXIAL T 1604-101350000		
L201,202		*	L33-1753-08	CHOKE COIL 47M 1608-473015000		
L203		*	L32-1069-08	REC BIAS OSCIL 1609-000000000		
L204,205		*	L92-0864-08	CH-FERRITE BEA 2721-701020000		
L401,402		*	L90-0513-08	TOROIDAL COIL 1608-000000604		
L403		*	L33-1756-08	INDUCTOR LINE 1608-221000001		
L404,405		*	L33-1754-08	CHOKE COIL 8UH 1614-080008000		
L407,409		*	L33-1754-08	CHOKE COIL 8UH 1614-080008000		
L408		*	L92-0864-08	CH-FERRITE BEA 2721-701020000		
L410		*	L92-0864-08	CH-FERRITE BEA 2721-701020000		
L412-414		*	-	JUMPER WIRE 3005-000000000		
L501		*	L40-1001-58	RADIAL AXIAL T 1604-100800000		
L901		*	L33-1755-08	COMMON MODE CH 2101-000000020		
△ TR901		*	L07-3377-08	POWER TRANSFOR 2302-285050510		
X101		*	L77-2475-08	CRYSTAL 11.059 1001-110592200		
XT1		*	L77-2476-08	CRYSTAL 27MHz 1001-270000250		
J101-105			RK73GB2A000J	CHIP R 0.0 J 1/10W		
J117			RK73GB2A000J	CHIP R 0.0 J 1/10W		
J120			RK73GB2A000J	CHIP R 0.0 J 1/10W		
J201			RK73GB2A000J	CHIP R 0.0 J 1/10W		
J218			RK73GB2A000J	CHIP R 0.0 J 1/10W		
J220			RK73GB2A000J	CHIP R 0.0 J 1/10W		
J222			RK73GB2A000J	CHIP R 0.0 J 1/10W		
J434			RK73GB2A000J	CHIP R 0.0 J 1/10W		
J502,503			RK73GB2A000J	CHIP R 0.0 J 1/10W		
J506			RK73GB2A000J	CHIP R 0.0 J 1/10W		
J512-514			RK73GB2A000J	CHIP R 0.0 J 1/10W		
J541			RK73GB2A000J	CHIP R 0.0 J 1/10W		
J545			RK73GB2A000J	CHIP R 0.0 J 1/10W		
L206-211			RK73GB2A000J	CHIP R 0.0 J 1/10W		
L510			RK73GB2A000J	CHIP R 0.0 J 1/10W		
R3			RK73GB2A330J	CHIP R 33 J 1/10W		
R6			RK73GB2A100J	CHIP R 10 J 1/10W		
R10,11			RK73GB2A220J	CHIP R 22 J 1/10W		
R12,13			RK73GB2A153J	CHIP R 15K J 1/10W		
R14			RK73GB2A120J	CHIP R 12 J 1/10W		
R16			RK73GB2A000J	CHIP R 0.0 J 1/10W		
R17			RK73GB2A100J	CHIP R 10 J 1/10W		
R18			RK73GB2A912J	CHIP R 9.1K J 1/10W		
R19			RK73GB2A272J	CHIP R 2.7K J 1/10W		
R20			RK73GB2A000J	CHIP R 0.0 J 1/10W		
R21			RK73GB2A152J	CHIP R 1.5K J 1/10W		
R22,23			RK73GB2A512J	CHIP R 5.1K J 1/10W		
R24			RK73GB2A154J	CHIP R 150K J 1/10W		
R25			RK73GB2A203J	CHIP R 20K J 1/10W		
R26			RK73GB2A472J	CHIP R 4.7K J 1/10W		
R28			RK73GB2A5R1J	CHIP R 5.1 J 1/10W		
R29			RK73GB2A000J	CHIP R 0.0 J 1/10W		
R30			RK73GB2A333J	CHIP R 33K J 1/10W		
R32			RK73GB2A203J	CHIP R 20K J 1/10W		
R33			RK73GB2A102J	CHIP R 1.0K J 1/10W		
R34,35			RK73GB2A222J	CHIP R 2.2K J 1/10W		
R37			RK73GB2A472J	CHIP R 4.7K J 1/10W		

L: Scandinavia K: USA P: Canada R: Mexico C: China I: Malaysia
 Y: PX(Far East,Hawaii) T: England E: Europe G: Germany V: China(Shanghai)
 Y: AAFES(Europe) X: Australia Q: Russia H: Korea M: Other Areas △Indicates safety critical components.

* New parts

Parts without **Parts No.** are not supplied.

Les articles non mentionnes dans le **Parts No.** ne sont pas fournis.

Teile ohne **Parts No.** werden nicht geliefert.

7

Ref. No.	Add-ress	New Parts	Parts No.	Description	Desti-nation	Re-marks
R40			RK73GB2A000J	CHIP R 0.0 J 1/10W		
R41			RK73GB2A103J	CHIP R 10K J 1/10W		
R42			RK73GB2A472J	CHIP R 4.7K J 1/10W		
R43			RK73GB2A101J	CHIP R 100 J 1/10W		
R44			RK73GB2A000J	CHIP R 0.0 J 1/10W		
R46			RK73GB2A103J	CHIP R 10K J 1/10W		
R47,48			RK73GB2A472J	CHIP R 4.7K J 1/10W		
R49,50			RK73GB2A102J	CHIP R 1.0K J 1/10W		
R51			RK73GB2A330J	CHIP R 33 J 1/10W		
R52,53			RK73GB2A1R0J	CHIP R 1.0 J 1/10W		
R54			RK73GB2A223J	CHIP R 22K J 1/10W		
R55,56			RK73GB2A1R0J	CHIP R 1.0 J 1/10W		
R57			RK73GB2A474J	CHIP R 470K J 1/10W		
R58			RK73GB2A223J	CHIP R 22K J 1/10W		
R59			RK73GB2A1R0J	CHIP R 1.0 J 1/10W		
R60			RK73GB2A154J	CHIP R 150K J 1/10W		
R61			RK73GB2A103J	CHIP R 10K J 1/10W		
R62			RK73GB2A622J	CHIP R 6.2K J 1/10W		
R63			RK73GB2A154J	CHIP R 150K J 1/10W		
R64			RK73GB2A474J	CHIP R 470K J 1/10W		
R65,66			RK73GB2A222J	CHIP R 2.2K J 1/10W		
R67,68			RK73GB2A101J	CHIP R 100 J 1/10W		
R70			RK73GB2A103J	CHIP R 10K J 1/10W		
R71-74			RK73GB2A102J	CHIP R 1.0K J 1/10W		
R75			RK73GB2A681J	CHIP R 680 J 1/10W		
R76,77			RK73GB2A471J	CHIP R 470 J 1/10W		
R80			RK73GB2A123J	CHIP R 12K J 1/10W		
R82			RK73GB2A152J	CHIP R 1.5K J 1/10W		
R93			RK73GB2A123J	CHIP R 12K J 1/10W		
R95			RK73GB2A152J	CHIP R 1.5K J 1/10W		
R101,102			RK73GB2A101J	CHIP R 100 J 1/10W		
R103,104			RK73GB2A331J	CHIP R 330 J 1/10W		
R105			RK73GB2A101J	CHIP R 100 J 1/10W		
R106-110			RK73GB2A102J	CHIP R 1.0K J 1/10W		
R111			RK73GB2A472J	CHIP R 4.7K J 1/10W		
R112-116			RK73GB2A223J	CHIP R 22K J 1/10W		
R117-119			RK73GB2A472J	CHIP R 4.7K J 1/10W		
R120			RK73GB2A102J	CHIP R 1.0K J 1/10W		
R121			RK73GB2A103J	CHIP R 10K J 1/10W		
R122-124			RK73GB2A223J	CHIP R 22K J 1/10W		
R125			RK73GB2A103J	CHIP R 10K J 1/10W		
R126			RK73GB2A223J	CHIP R 22K J 1/10W		
R127			RK73GB2A123J	CHIP R 12K J 1/10W		
R128			RK73GB2A682J	CHIP R 6.8K J 1/10W		
R129-131			RK73GB2A102J	CHIP R 1.0K J 1/10W		
R134-139			RK73GB2A102J	CHIP R 1.0K J 1/10W		
R140			RK73GB2A473J	CHIP R 47K J 1/10W		
R141			RK73GB2A222J	CHIP R 2.2K J 1/10W		
R142			RK73GB2A103J	CHIP R 10K J 1/10W		
R145			RK73GB2A101J	CHIP R 100 J 1/10W		
R146			RK73GB2A102J	CHIP R 1.0K J 1/10W		
R147			RK73GB2A000J	CHIP R 0.0 J 1/10W		
R148			RK73GB2A473J	CHIP R 47K J 1/10W		
R149			RK73GB2A223J	CHIP R 22K J 1/10W		
R150			RK73GB2A102J	CHIP R 1.0K J 1/10W		

L: Scandinavia K: USA P: Canada R: Mexico C: China I: Malaysia
 Y: PX(Far East,Hawaii) T: England G: Germany V: China(Shanghai)
 Y: AAFES(Europe) X: Australia Q: Russia H: Korea M: Other Areas ΔIndicates safety critical components.

* New parts

Parts without **Parts No.** are not supplied.

Les articles non mentionnes dans le **Parts No.** ne sont pas fournis.

Teile ohne **Parts No.** werden nicht geliefert.

8

Ref. No.	Add-ress	New Parts	Parts No.	Description	Desti-nation	Re-marks
R151-156			RK73GB2A223J	CHIP R 22K J 1/10W		
R158-167			RK73GB2A102J	CHIP R 1.0K J 1/10W		
R169			RK73GB2A102J	CHIP R 1.0K J 1/10W		
R170			RK73GB2A223J	CHIP R 22K J 1/10W		
R171,172			RK73GB2A103J	CHIP R 10K J 1/10W		
R173-177			RK73GB2A223J	CHIP R 22K J 1/10W		
R178			RK73GB2A154J	CHIP R 150K J 1/10W		
R179,180			RK73GB2A103J	CHIP R 10K J 1/10W		
R181-185			RK73GB2A102J	CHIP R 1.0K J 1/10W		
R188			RK73GB2A223J	CHIP R 22K J 1/10W		
R189			RK73GB2A102J	CHIP R 1.0K J 1/10W		
R191			RK73GB2A102J	CHIP R 1.0K J 1/10W		
R192,193			RK73GB2A104J	CHIP R 100K J 1/10W		
R194,195			RK73GB2A102J	CHIP R 1.0K J 1/10W		
R196			RK73GB2A104J	CHIP R 100K J 1/10W		
R197			RK73GB2A473J	CHIP R 47K J 1/10W		
R198			RK73GB2A102J	CHIP R 1.0K J 1/10W		
R199			RK73GB2A103J	CHIP R 10K J 1/10W		
R201-204			RK73GB2A332J	CHIP R 3.3K J 1/10W		
R205			RK73GB2A103J	CHIP R 10K J 1/10W		
R206			RK73GB2A102J	CHIP R 1.0K J 1/10W		
R212			RK73GB2A104J	CHIP R 100K J 1/10W		
R213-215			RK73GB2A103J	CHIP R 10K J 1/10W		
R216			RK73GB2A104J	CHIP R 100K J 1/10W		
R218			RK73GB2A223J	CHIP R 22K J 1/10W		
R221			RK73GB2A333J	CHIP R 33K J 1/10W		
R224			RK73GB2A102J	CHIP R 1.0K J 1/10W		
R225,226			RK73GB2A154J	CHIP R 150K J 1/10W		
R229,230			RK73GB2A183J	CHIP R 18K J 1/10W		
R231,232			RK73GB2A104J	CHIP R 100K J 1/10W		
R233,234			RK73GB2A333J	CHIP R 33K J 1/10W		
R236			RK73GB2A222J	CHIP R 2.2K J 1/10W		
R239,240			RK73GB2A330J	CHIP R 33 J 1/10W		
R241,242			RK73GB2A472J	CHIP R 4.7K J 1/10W		
R243,244			RK73GB2A333J	CHIP R 33K J 1/10W		
R245			RK73GB2A472J	CHIP R 4.7K J 1/10W		
R247			RK73GB2A153J	CHIP R 15K J 1/10W		
R249,250			RK73GB2A682J	CHIP R 6.8K J 1/10W		
R251			RK73GB2A333J	CHIP R 33K J 1/10W		
R252			RK73GB2A684J	CHIP R 680K J 1/10W		
R253,254			RK73GB2A823J	CHIP R 82K J 1/10W		
R255,256			RK73GB2A391J	CHIP R 390 J 1/10W		
R257,258			RK73GB2A103J	CHIP R 10K J 1/10W		
R259			RK73GB2A473J	CHIP R 47K J 1/10W		
R260,261			RK73GB2A124J	CHIP R 120K J 1/10W		
R262			RK73GB2A103J	CHIP R 10K J 1/10W		
R263,264			RK73GB2A124J	CHIP R 120K J 1/10W		
R265			RK73GB2A223J	CHIP R 22K J 1/10W		
R266			RK73GB2A103J	CHIP R 10K J 1/10W		
R267			RK73GB2A104J	CHIP R 100K J 1/10W		
R268			RK73GB2A103J	CHIP R 10K J 1/10W		
R269			RK73GB2A104J	CHIP R 100K J 1/10W		
R280			RK73GB2A272J	CHIP R 2.7K J 1/10W		
R281			RK73GB2A123J	CHIP R 12K J 1/10W		
R282			RK73GB2A272J	CHIP R 2.7K J 1/10W		

L: Scandinavia K: USA P: Canada R: Mexico C: China I: Malaysia
 Y: PX(Far East,Hawaii) T: England G: Germany V: China(Shanghai)
 Y: AAFES(Europe) X: Australia Q: Russia H: Korea M: Other Areas ΔIndicates safety critical components.

PARTS LIST

RXD-M505USB/LS-M505

* New parts

Parts without **Parts No.** are not supplied.Les articles non mentionnés dans le **Parts No.** ne sont pas fournis.Teile ohne **Parts No.** werden nicht geliefert.

9

Ref. No.	Add-ress	New Parts	Parts No.	Description	Desti-nation	Re-marks
R283			RK73GB2A123J	CHIP R 12K J 1/10W		
R301,302			RK73GB2A222J	CHIP R 2.2K J 1/10W		
R310			RK73GB2A103J	CHIP R 10K J 1/10W		
R312			RK73GB2A102J	CHIP R 1.0K J 1/10W		
R315,316			RK73GB2A332J	CHIP R 3.3K J 1/10W		
R332,333			RK73GB2A222J	CHIP R 2.2K J 1/10W		
R340,341			RK73GB2A152J	CHIP R 1.5K J 1/10W		
R343,344			RK73GB2A222J	CHIP R 2.2K J 1/10W		
R345,346			RK73GB2A472J	CHIP R 4.7K J 1/10W		
R347,348			RK73GB2A183J	CHIP R 18K J 1/10W		
R349,350			RK73GB2A912J	CHIP R 9.1K J 1/10W		
R351,352			RK73GB2A102J	CHIP R 1.0K J 1/10W		
R355,366			RK73GB2A472J	CHIP R 4.7K J 1/10W		
R356			RK73GB2A273J	CHIP R 27K J 1/10W		
R357			RK73GB2A000J	CHIP R 0.0 J 1/10W		
R358-360			RK73GB2A103J	CHIP R 10K J 1/10W		
R361			RK73GB2A104J	CHIP R 100K J 1/10W		
R362			RK73GB2A273J	CHIP R 27K J 1/10W		
R363			RK73GB2A472J	CHIP R 4.7K J 1/10W		
R367,368			RK73GB2A102J	CHIP R 1.0K J 1/10W		
R369,370			RK73GB2A103J	CHIP R 10K J 1/10W		
R371			RK73GB2A472J	CHIP R 4.7K J 1/10W		
R401,402			RK73GB2A122J	CHIP R 1.2K J 1/10W		
R403,404			RK73GB2A332J	CHIP R 3.3K J 1/10W		
R405			RK73GB2A202J	CHIP R 2.0K J 1/10W		
R407,408			RK73GB2A563J	CHIP R 56K J 1/10W		
R409,410			RD14BB2H4R7J	RD 4.7 J 1/2W		
R411			RK73GB2A103J	CHIP R 10K J 1/10W		
R412,413			RK73GB2A332J	CHIP R 3.3K J 1/10W		
R414			RK73GB2A104J	CHIP R 100K J 1/10W		
R415			RK73GB2A103J	CHIP R 10K J 1/10W		
R416			RD14BB2H4R7J	RD 4.7 J 1/2W		
R417			RK73GB2A000J	CHIP R 0.0 J 1/10W		
R418,419			RK73GB2A472J	CHIP R 4.7K J 1/10W		
R420,421			RS14KB3DR22J	FL-PROOF RS 0.22 J 2W		
R422,423			RK73GB2A302J	CHIP R 3.0K J 1/10W		
R424,425			RK73GB2A563J	CHIP R 56K J 1/10W		
R426			RD14BB2E100J	RD 10 J 1/4W		
R429			RK73GB2A102J	CHIP R 1.0K J 1/10W		
R430			RK73GB2A223J	CHIP R 22K J 1/10W		
R431			RK73GB2A151J	CHIP R 150 J 1/10W		
R433,434			RK73GB2A102J	CHIP R 1.0K J 1/10W		
R435			RK73GB2A103J	CHIP R 10K J 1/10W		
R436,437			RK73GB2A223J	CHIP R 22K J 1/10W		
R439			RK73GB2A302J	CHIP R 3.0K J 1/10W		
R440			RK73GB2A104J	CHIP R 100K J 1/10W		
R441			RK73GB2A102J	CHIP R 1.0K J 1/10W		
R445			RK73GB2A223J	CHIP R 22K J 1/10W		
R448			RK73GB2A563J	CHIP R 56K J 1/10W		
R453			RD14BB2E2R2J	RD 2.2 J 1/4W		
R454			RK73GB2A103J	CHIP R 10K J 1/10W		
R457			RK73GB2A103J	CHIP R 10K J 1/10W		
R458			RK73GB2A333J	CHIP R 33K J 1/10W		
R459			RK73GB2A473J	CHIP R 47K J 1/10W		
R460,461			RK73GB2A472J	CHIP R 4.7K J 1/10W		

L: Scandinavia K: USA P: Canada R: Mexico C: China I: Malaysia
 Y: PX(Far East,Hawaii) T: England E: Europe G: Germany V: China(Shanghai)
 Y: AAFES(Europe) X: Australia Q: Russia H: Korea M: Other Areas Δ Indicates safety critical components.

* New parts

Parts without **Parts No.** are not supplied.Les articles non mentionnés dans le **Parts No.** ne sont pas fournis.Teile ohne **Parts No.** werden nicht geliefert.

10

Ref. No.	Add-ress	New Parts	Parts No.	Description	Desti-nation	Re-marks
R462			RD14BB2H4R7J	RD 4.7 J 1/2W		
R463			RK73GB2A103J	CHIP R 10K J 1/10W		
R464			RD14BB2H4R7J	RD 4.7 J 1/2W		
R468			RK73GB2A330J	CHIP R 33 J 1/10W		
R469			RK73GB2A103J	CHIP R 10K J 1/10W		
R470			RK73GB2A152J	CHIP R 1.5K J 1/10W		
R471			RK73GB2A473J	CHIP R 47K J 1/10W		
R472			RK73GB2A102J	CHIP R 1.0K J 1/10W		
R473,474			RK73GB2A473J	CHIP R 47K J 1/10W		
R475			RK73GB2A332J	CHIP R 3.3K J 1/10W		
R476			RK73GB2A102J	CHIP R 1.0K J 1/10W		
R477			RK73GB2A223J	CHIP R 22K J 1/10W		
R478,479			RK73GB2A563J	CHIP R 56K J 1/10W		
R480			RK73GB2A332J	CHIP R 3.3K J 1/10W		
R481			RK73GB2A821J	CHIP R 820 J 1/10W		
R482			RK73GB2A104J	CHIP R 100K J 1/10W		
R483,484			RK73GB2A102J	CHIP R 1.0K J 1/10W		
R485-488			RK73GB2A103J	CHIP R 10K J 1/10W		
R489			RK73GB2A472J	CHIP R 4.7K J 1/10W		
R491			RK73GB2A104J	CHIP R 100K J 1/10W		
R493			RK73GB2A122J	CHIP R 1.2K J 1/10W		
R494			RK73GB2A223J	CHIP R 22K J 1/10W		
R495			RK73GB2A563J	CHIP R 56K J 1/10W		
R496			RK73GB2A220J	CHIP R 22 J 1/10W		
R497			RK73GB2A103J	CHIP R 10K J 1/10W		
R499			RK73GB2A000J	CHIP R 0.0 J 1/10W		
R501,502			RK73GB2A103J	CHIP R 10K J 1/10W		
R503			RK73GB2A221J	CHIP R 220 J 1/10W		DISPLY
R503			RK73GB2A470J	CHIP R 47 J 1/10W		MAIN
R504			RK73GB2A223J	CHIP R 22K J 1/10W		
R506			RK73GB2A332J	CHIP R 3.3K J 1/10W		
R507			RK73GB2A683J	CHIP R 68K J 1/10W		
R508			RK73GB2A103J	CHIP R 10K J 1/10W		
R509			RK73GB2A473J	CHIP R 47K J 1/10W		
R510			RK73GB2A103J	CHIP R 10K J 1/10W		
R511			RK73GB2A102J	CHIP R 1.0K J 1/10W		
R512			RK73GB2A220J	CHIP R 22 J 1/10W		
R513			RK73GB2A470J	CHIP R 47 J 1/10W		
R514-516			RK73GB2A151J	CHIP R 150 J 1/10W		
R517-520			RK73GB2A221J	CHIP R 220 J 1/10W		
R538			RK73GB2A103J	CHIP R 10K J 1/10W		
R901			-	JUMPER WIRE 3005-00000000		
R930,931			* R92-4705-08	CEMENT 220 J 5W		
VR501			* T99-0703-08	ENCODER ROTARY 3300-000000160		
RL901			* S76-0151-08	RELAY SW. JZC- 2501-005000000		
SW501-509			* S70-0131-08	TACT SWITCH EV 3302-010150030		
SW511-518			* S70-0131-08	TACT SWITCH EV 3302-010150030		
SW712			* S70-0131-08	TACT SWITCH EV 3302-010150030		
D1			1N4001	DIODE 1N4001 T 1311-140010010		
D2,3			RLS4148	CH-DIODE RLS41 1321-041480020		
D4,5			1N4001	DIODE 1N4001 T 1311-140010010		
D101-103			RLS4148	CH-DIODE RLS41 1321-041480020		
D104,105			* IN4148	DIODE IN4148 T 1311-141480020		
D106			1N4001	DIODE 1N4001 T 1311-140010010		

L: Scandinavia K: USA P: Canada R: Mexico C: China I: Malaysia DISPLY: Display PCB
 Y: PX(Far East,Hawaii) T: England E: Europe G: Germany V: China(Shanghai) MAIN : Main PCB
 Y: AAFES(Europe) X: Australia Q: Russia H: Korea M: Other Areas Δ Indicates safety critical components.

* New parts

Parts without **Parts No.** are not supplied.

Les articles non mentionnes dans le **Parts No.** ne sont pas fournis.

Teile ohne **Parts No.** werden nicht geliefert.

11

Ref. No.	Add-ress	New Parts	Parts No.	Description	Desti-nation	Re-marks
D107,108			RLS4148	CH-DIODE RLS41		
D202		*	IN4148	DIODE IN4148 T		
D301		*	IN4148	DIODE IN4148 T		
D401,402			RLS4148	CH-DIODE RLS41		
D403-407		*	IN4148	DIODE IN4148 T		
D408		*	SR34	DIODE SR34 SMB		
D410-412			RLS4148	CH-DIODE RLS41		
D415		*	IN4148	DIODE IN4148 T		
D502,503			RLS4148	CH-DIODE RLS41		
D508,509			RLS4148	CH-DIODE RLS41	USB	
D901-908			1N4001	DIODE 1N4001.		
D909-912			1N5402-F	DIODE 1N5402-F		
D913-916			1N4001	DIODE 1N4001.		
D917		*	IN4148	DIODE IN4148 T		
IC101		*	SM5964-5	IC SM5964 QFP4		
IC102		*	M24C02-WMN6	IC M24C02-WMN6		
IC201		*	UTC7312	IC, UTC7312 PR		
IC201		*	YD7312	IC, YD7312 PRE		
IC301		*	SC7314S	IC SC7314S SIL		
IC401		*	SC1308L	IC AMP SC1308L		
IC402		*	STK453-030S	IC POWER AMP S		
IC403		*	AZ4558	IC, AZ4558 OPE		
IC403		*	D4558	IC, D4558 SOP8		
IC404		*	ML7812FA	IC ML7812FA RE		
IC405		*	AZ34063AM-E1	IC AZ34063AM-E		
IC501		*	PT6554	IC PT6554 LCD		
IC502		*	FM-9038TM2-5AN	SENSOR FM-9038		
ICP900			-	JUMPER WIRE		
LCD501	1C	*	B38-0285-08	LCD TC0380TTN-		
Q3		*	2SB1132R	CH-TRANSISTOR,		
Q4		*	BT3904	CH-TRANSISTOR,		
Q5,6		*	3CA8550	TRANSISTOR,PNP		
Q7-9		*	2SC8050	TRANSISTOR NPN		
Q101		*	2SC8050M	CH-TRANSISTOR		
Q102		*	3CA8550	TRANSISTOR,PNP		
Q103		*	2SC8050M	CH-TRANSISTOR		
Q104		*	3CA8550	TRANSISTOR,PNP		
Q105		*	2SC8050M	CH-TRANSISTOR		
Q106		*	3CA8550	TRANSISTOR,PNP		
Q107,108		*	2SC8050M	CH-TRANSISTOR		
Q201-206			2SC2412	TRANSISTOR, 2S		
Q207			2SA8550	TRANSISTOR PNP		
Q209		*	2SC8050M	CH-TRANSISTOR		
Q210		*	2SA8550	TRANSISTOR PNP		
Q211-222		*	2SC8050M	CH-TRANSISTOR		
Q230		*	2SA8550	TRANSISTOR PNP		
Q231,232		*	2SC8050M	CH-TRANSISTOR		
Q301,302		*	2SC8050M	CH-TRANSISTOR		
Q303		*	2SA8550	TRANSISTOR PNP		
Q401,402		*	2SC8050	TRANSISTOR NPN		
Q403,404		*	2SA8550	TRANSISTOR PNP		
Q405-408		*	2SC8050M	CH-TRANSISTOR		
Q410,411		*	2SC8050M	CH-TRANSISTOR		
Q412		*	2SB772-P	TRANSISTOR 2SB		
Q413		*	2SD882P	TRANSISTOR NPN		

L: Scandinavia K: USA P: Canada R: Mexico C: China I: Malaysia USB: USB PCB
 Y: PX(Far East,Hawaii) T: England E: Europe G: Germany V: China(Shanghai)
 Y: AAFES(Europe) X: Australia Q: Russia H: Korea M: Other Areas Δ Indicates safety critical components.

* New parts

Parts without **Parts No.** are not supplied.

Les articles non mentionnes dans le **Parts No.** ne sont pas fournis.

Teile ohne **Parts No.** werden nicht geliefert.

12

Ref. No.	Add-ress	New Parts	Parts No.	Description	Desti-nation	Re-marks
Q414,415		*	2SC8050M	CH-TRANSISTOR		
Q416		*	2SC8050	TRANSISTOR NPN		
Q417		*	2SD882P	TRANSISTOR NPN		
Q418		*	2SA8550	TRANSISTOR PNP		
Q419,420		*	2SC8050M	CH-TRANSISTOR		
Q425-427		*	2SC8050M	CH-TRANSISTOR		
Q428		*	2SA8550	TRANSISTOR PNP		
Q430		*	2SC8050M	CH-TRANSISTOR		
Q431		*	2SA8550	TRANSISTOR PNP		
Q501		*	2SC8050M	CH-TRANSISTOR		
Q502		*	3CA8550	TRANSISTOR,PNP		
Q503		*	2SC8050	TRANSISTOR NPN		
Q902		*	2SC8050	TRANSISTOR NPN		
U1		*	AZ1117H-3.3	IC, AZ1117H-3.		
U2		*	AZ1117H-ADJ	IC AZ1117H-ADJ		
U3		*	SPHE8104AW	IC SPHE8104AW		
U7		*	K4S641632KUC60	IC K4S641632K-		
U9		*	AM5954	IC, AM5954 MOT		
U11		*	S29AL008D70-5	IC 8M S29AL008		
ZD401		*	UDZS6.2B	ZENER DIODE 6.		
ZD402		*	UDZS8.2B	ZENER DIODE 8.		
ZD406		*	BZX79-C3V3	ZENER DIODE BZ		
ZD407		*	UDZS10B	ZENER DIODE 10		
ZD410		*	UDZS5.6B	ZENER DIODE 5.		
ZD412		*	UDZS6.2B	ZENER DIODE 6.		

L: Scandinavia K: USA P: Canada R: Mexico C: China I: Malaysia
 Y: PX(Far East,Hawaii) T: England E: Europe G: Germany V: China(Shanghai)
 Y: AAFES(Europe) X: Australia Q: Russia H: Korea M: Other Areas Δ Indicates safety critical components.

PARTS LIST

RXD-M505USB/LS-M505

RXD-M505USB/LS-M505

SPECIFICATIONS

Main unit

Amplifier section

Rated output power
.....30 W + 30 W (1 kHz, 10% T.H.D., at 4 Ω)

Tuner section

FM tuner section
Tuning frequency range
.....87.5 MHz ~ 108 MHz

AM tuner section
Tuning frequency range
.....531 kHz ~ 1,602 kHz

CD player section

Laser.....Semiconductor laser
Over sampling 8 fs (352.8 kHz)
Laser wave length..... 760 ~ 800 nm
Laser power class..... Class 1 (IEC)
D/A conversion 1 Bit

USB interface

USB standard USB 1.1/2.0
Maximum supply current 500 mA
File system FAT 12/ 16/ 32
MP3 decode
.....Compliant with MPEG-1/2 Audio Layer-3
WMA decode
.....Compliant with Windows Media Audio 9
Recording format
..... MP3, 128 kbps/44.1 kHz

Cassette deck section

Track4-track, 2-channel stereo

AUX section

Input (Sensitivity/ Impedance)
.....1000 mV/10 kΩ

General

Power consumption 75 W
Dimensions..... W : 160 mm (6-5/16")
H : 269 mm (10-9/16")
D : 345 mm (13-15/16")
Weight (net) 5.5 kg (11.7 lb)

Speakers

Enclosure.....Bass-reflex type
Speaker configuration
Woofers 100 mm, cone type
Tweeter 35 mm, cone type
Impedance..... 4 Ω
Maximum input level 60 W
Dimensions..... W : 160 mm (6-5/16")
H : 268 mm (10-9/16")
D : 218 mm (8-9/16")
Weight (net) 2.2 kg (4.9 lb) (1 piece)

Notes:

- Kenwood follows a policy of continuous advancements in development. For this reason specifications may be changed without notice.
- Sufficient performance may not be exhibited at extremely cold locations (where water freezes).

HOW TO READ THE PARTS LIST

ABBREVIATION OF MODEL AND MASS PRODUCTION'S DESTINATIONS

MODEL	ABB.	Australia	Europe
		X	E
M-505USB-B	B	XB	EB
M-505USB-S	S	XS	ES

