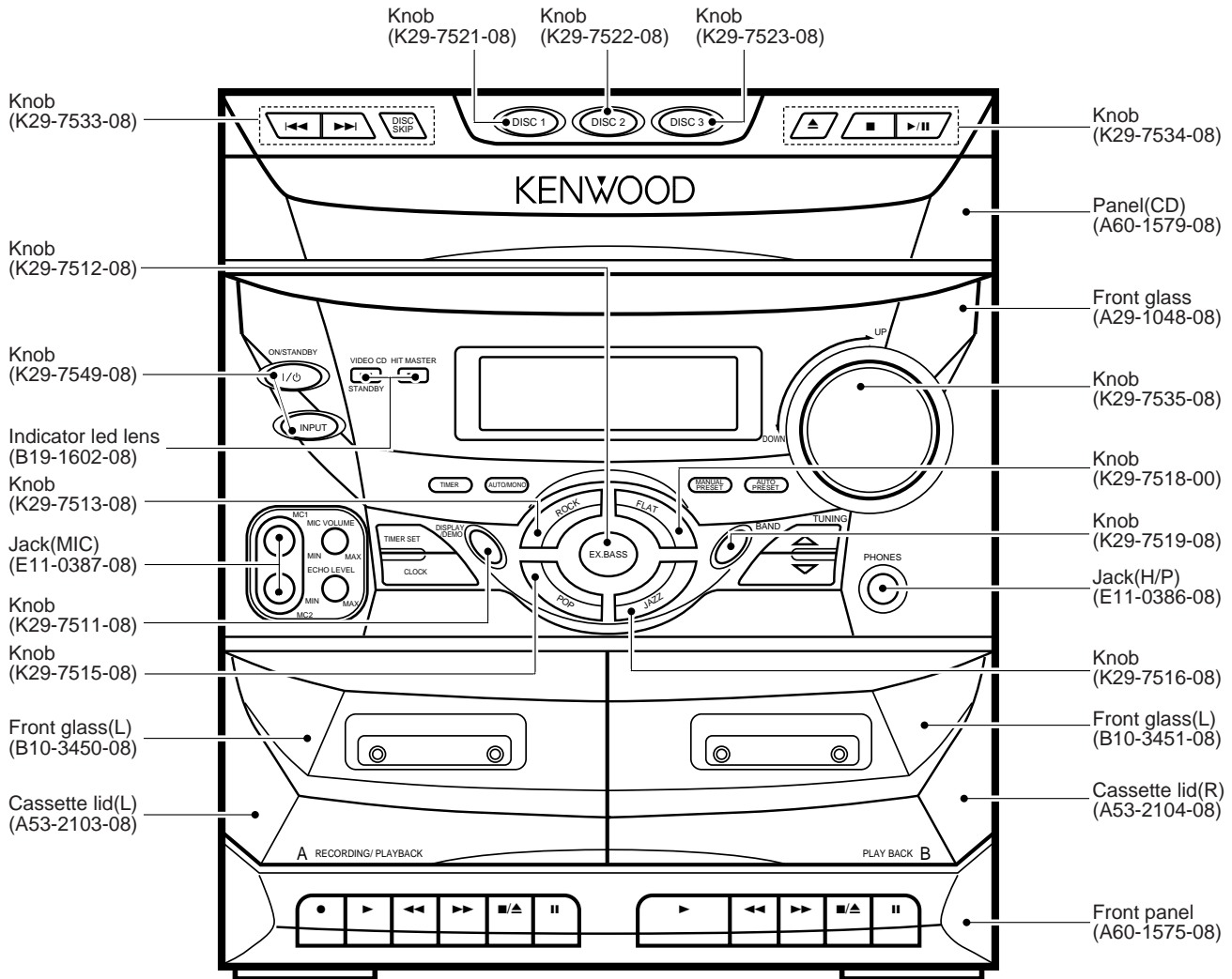


RXD-V313

SERVICE MANUAL (XD-V313)



In compliance with Federal Regulations, following are reproductions of labels on, or inside the product relating to laser product safety.

KENWOOD-Crop. certifies this equipment conforms to DHHS Regulations No. 21 DFR 1040. 10, Chapter 1, Subchapter J.

**DANGER : Laser radiation when open and interlock defeated.
AVOID DIRECT EXPOSURE TO BEAM**

Refer to RXD-251/301/301E/301W/351/351E/351W/371S/A3 service manual(B51-5454-00), if you require mechanism operation description in detail.

Please replace with the new pcb and/or mechanism on CD player if it doesn't work.

RXD-V313

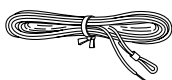
CONTENTS / ACCESSORIES / CAUTIONS

Contents

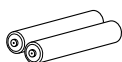
CONTENTS / ACCESSORIES / CAUTIONS.....	2	PC BOARD	11
EXTERNAL VIEW	3	SCHEMATIC DIAGRAM	15
BLOCK DIAGRAM	4	EXPLODED VIEW	26
CIRCUIT DESCRIPTION.....	5	PARTS LIST.....	27
ADJUSTMENT	8	SPECIFICATIONS	Back cover
WIRING DIAGRAM.....	10		

Accessories

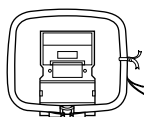
FM indoor antenna (1)
(T90-0801-05)



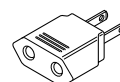
Batteries (R6/AA) (2)



AM loop antenna (1)
(T90-0815-08)

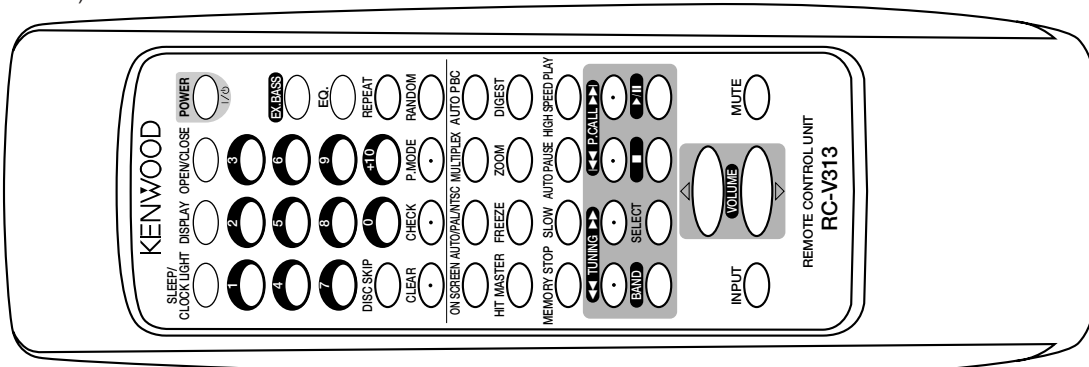


AC plug adaptor (1)
(E03-0115-05)



Use to adapt the plug on the power cord to the shape of the wall outlet.
(Accessory only for regions where use is necessary.)

Remote control unit (1)
(A70-1261-08) : RC-V313



Cautions

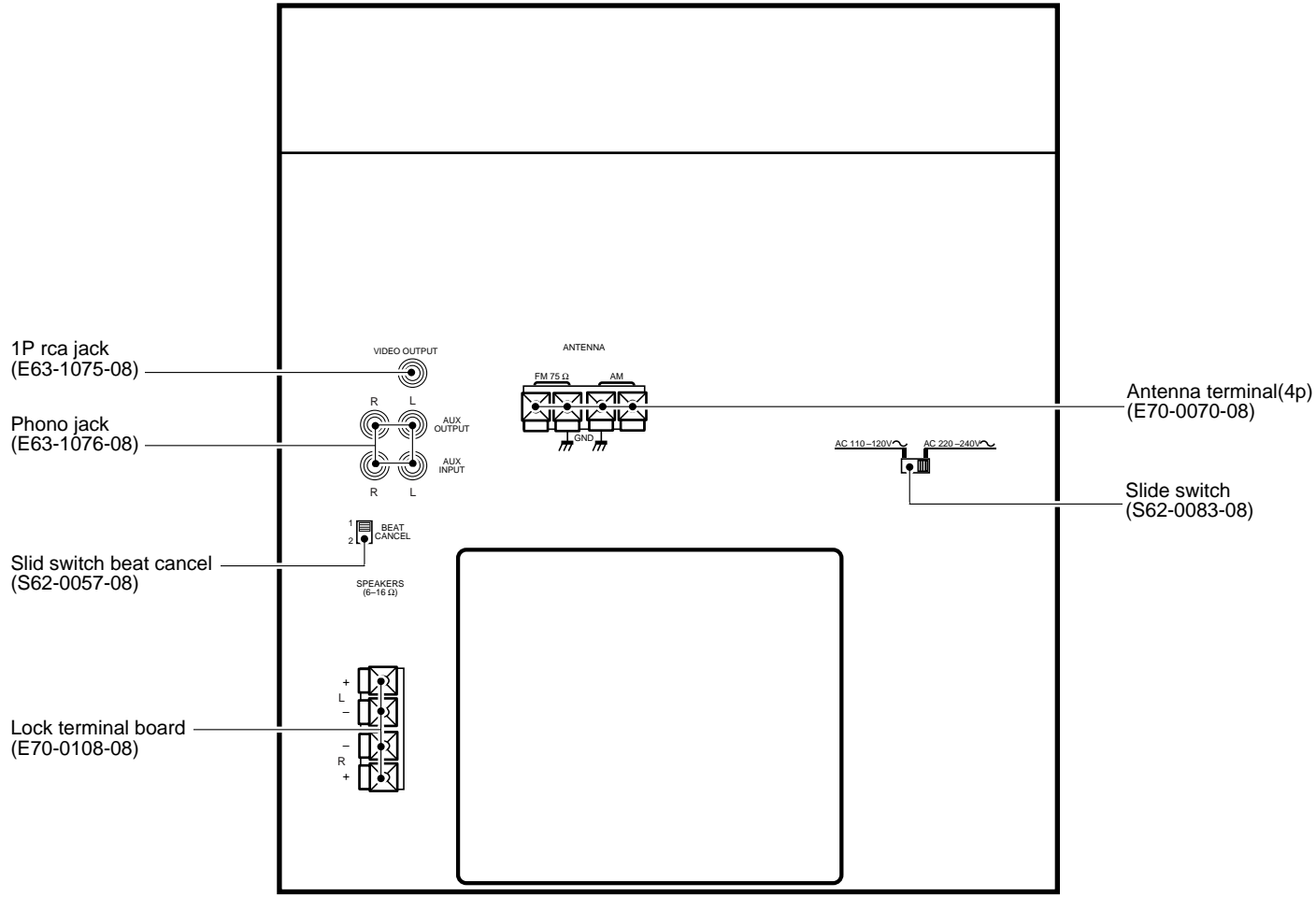
Operation to reset

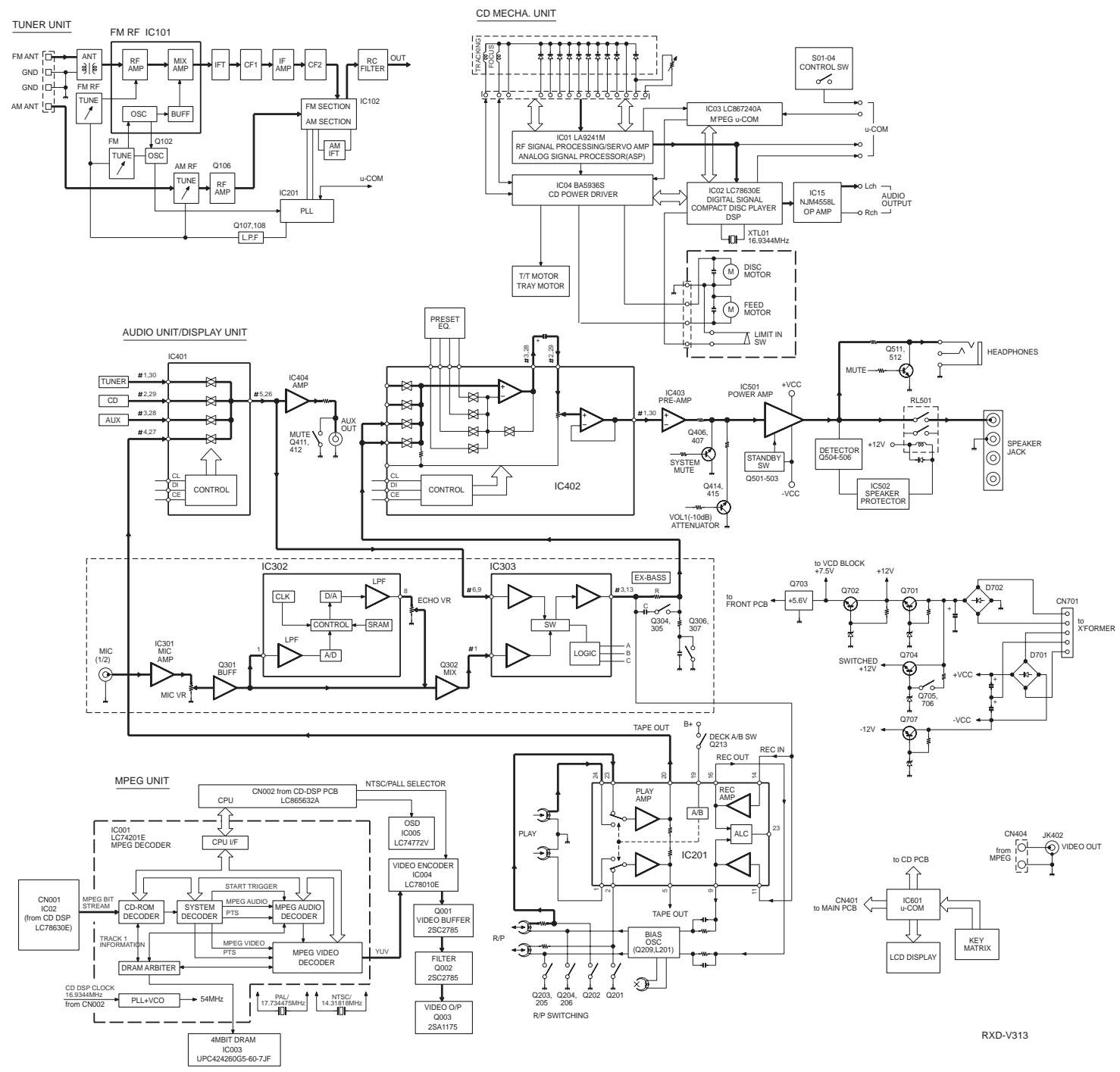
The microcomputer may fall into malfunction (impossibility to operate, erroneous display, etc.) when the power cord is unplugged while power is ON or due to an external factor. In this case, execute the following procedure to reset the microcomputer and return it to normal condition.

Press the "POWER" key while holding the Stop (■) key of the CD section pressed, to switch off the power, and then switch the power on again after a few seconds.

- Please note that resetting the microcomputer clears the contents stored in and returns and to condition when it left the factory.

EXTERNAL VIEW





CIRCUIT DESCRIPTION

1. Microprocessor : (IC601, LC867224A-5H95)

1-1. Pin description

No.	Name	I/O	Description	Active	
				H	L
1	CE	I	LC7218, LC75392 CE out		
2	RESET-OUT	O	Reset out IC03 (LC867240A)		O
3	DI	I	LC7218, LC75392, LC78211 data out		
4	DO	O	Data output to LC7218		
5	CLK	I	LC 7218, LC75392, LC78211 clock out		
6	DATA-OUT	O	Serial data out to LC867240A		
7	DATA-IN	I	Serial output of SUBQ 80BIT		
8	CLK-OUT	O	Clock output		
9	N/C	O	No used		
10	STB-OUT	O	Strobe out		
11	BUSY-IN	I	Busy input		
12	RESET	I	Reset signal input		O
13	POWER-DOWN	I	Power down input		O
14	GND	-	GND		
15	VSS	-	Vss		
16	X1	-	Xtal 6.0MHz		
17	X2	-	Xtal 6.0MHz		
18	VDD1	-	Vdd		
19~24	K1~K6	I	Key input (K1~K4),K5/K6 (No used)		
25	MODE-SW2	I	Model discrimination		
26	MODE-SW1	I	Model discrimination		
27, 28	GND	I	GND		
29	REMOTE IN	I	Remote signal input		O
30	VR +	I	VR encoder input A		
31	VR -	I	VR encoder input B		
32	PIC-UP	I	Pick-up SW		
33	PIC-DOWN	I	Pick-down SW		
34	DISC-COUNT	I	Disc counter SW		
35	TURNTABLE-SW	I	Turntable SW		
36	TRAY-OPEN	I	Tray open SW		
37	TRAY-CLOSE	I	Tray close SW		
38	TURNTABLE MOTOR +	O	Turntable motor (+)	O	
39	TURNTABLE MOTOR -	O	Turntable motor (-)	O	
40	TRAY MOTOR +	O	Tray motor control (+)	O	
41	TRAY MOTOR -	O	Tray motor control (-)	O	
42	MOTOR SPEED	O	Motor speed control	Nor	Down
43	LED HIT MASTER	O	LED control (hit master)		O
44	TUNER	O	No used		O
45	CD	O			
46	AUX	O			
47	TAPE	O			
48	FLAT	O			
49	ROCK	O			
50	JAZZ	O			
51	POP	O			
52~55	S1-S4	O	Segment out (1~4)		
56	VDD2	-	Vdd		
57	VSS2	-	Vss		
58~79	S5~S26	O	Segment out (5~26)		
80~82	BIAS3~1	-	GND		

RXD-V313

CIRCUIT DESCRIPTION

No.	Name	I/O	Description	Active	
				H	L
83~86	COM-0~3	O	FL Common 0~3		
87	FM-STEREO	I	FM stereo signal input	Mono	Stereo
88	SYN REC	I	Synchro start input		O
89	VSS3	-	Vss		
90	VDD3	-	Vdd		
91	POWER-SW	O	Power SW out	On	Off
92	SYS-MUT	O	System mute out	Off	On
93	TU-MUT	O	Tuner mute out	On	Off
94	FUNCTION-TAPE	O	No used		
95	LCD-BACK-LIGHT	O	LCD back light control	On	Off
96	N/C	I	No used		
97	VR-1	O	VR step extend out	1step	Others
98	REC-MUTE	O	IC03 (LC867240A) rec out mute	On	Off
99	EX-BASS	O	EX-bass control	On	Off
100	VOICE	O	Voice cancel out	Off	On

2. MPEG Microprocessor : LC867240A (CD PCB, IC03)

2-1. Pin description

No.	Name	I/O	Description	Active	
				H	L
1	N/P SEL OUT	O	NTSC/PAL sel out to IC004 (LC78010E)		O
2	RESET OUT	O	IC001 (LC74201JE) reset out		
3	DI	I	DI (IC001, LC74201JE)/SIN (IC005, LC74772V)		
4	DO	O	DO (IC001, LC74201JE)		
5	CL	I	Clock (IC005, LC74772V)		
6	DATA OUT	O	Data out to IC601 (LC867724A)		
7	DATA IN	I	Data input from IC601 (LC867724A)		
8	SCK	I	Clock out from IC601 (LC867724A)		
9	STB IN	I	Strobe input from IC601 (LC867724A)		
10	BUSY OUT	O	Busy out to IC601 (LC867724A)		
11	MIRQ	I	MIRQ (LC74201JE)		O
12	RESET	I	Reset input		
13, 14	I/P	-	Vss		
15	VSS	-	Vss		
16, 17	CF1/CF2	-	Xtal 6.0 MHz		
18	VDD	-	Vdd		
19	FUNCTION 4/3	-	Vss		
20	8300/8301	-	Vss		
21	MULTI 9/16	-	Vss		
22	IM DRAM	-	Vss		
23~26	-	-	Vss		
27	WRQ	I	Sub-code Q input stand by		
28, 29	-	-	Vss		
30	VIDEO LED	O	LED control (Video)		O
31~37	N/C	-	No used		
38	VDD CONTROL	O	MPEG Vdd control	Other	CD
39~55	N/C	-	No used		
56	VDD	-	Vdd		
57	VSS	-	Vss		
58~73	-	-	No used		
74	SL +	O	Sled motor control (+)	O	

CIRCUIT DESCRIPTION

No.	Name	I/O	Description	Active	
				H	L
75	SL -	O	Sled motor control (-)	O	
76	SPEED B	O	Speed control terminal to IC01 (LA9241)		
77	SPEED A	O	Speed control terminal to IC01 (LA9241)		
78	AUDIO MUTE	O	Audio mute control	On	Off
79	MUTE	O	IC04 (BA6536S) mute control	CD	Other
80	PIC LIMIT SW	I	Pic limit switch input		O
81~86	-	-	Vss		
87	CQCK	O	Command clock output to IC2 (LC78630E)		
88	DAT	O	Command output to IC2 (LC78630E)		
89	VSS	-	Vss		
90	VDD	-	Vdd		
91	SQ OUT	I	Sub-code Q input from IC2 (LC78630E)		
92	RWC	O	IC02 (LA9241), CE		
93	RES	O	Chip reset out to IC2 (LC78630E)		
94	DRF	I	DRF from IC01 (LA9241)		
95, 96	N/C	-	No used		
97	CE	O	CE to IC001 (LC74201JE)		
98	VOE	O	VOE to IC001 (LC74201JE)		
99	CS	O	CS to IC005 (LC74772V)		
100	RESET OUT	O	Reset out		O

3. Key matrix

PORT	SW 1	SW 2	SW 3	SW 4	SW 5	SW 6	SW 7	SW 8	SW 9	SW 10
Pin 19 (K1)	Power	Input	Clock Set	Timer Mode	Timer Set	-	EQ Off	Rock	Jazz	Pop
Pin 20 (K2)	Tuning Up	Tuning Down	Band	Auto/ Mono	Auto Preset	Manual Preset	EX Bass	-	-	-
Pin 21 (K3)	CD AMS +	CD AMS -	-	-	Disc Skip	Disc 1	Disc 2	Disc 3	Open Close	-
Pin 22 (K4)	CD Stop	CD Play Pause	-	-	-	-	-	-	-	-

4. All LCD light on mode

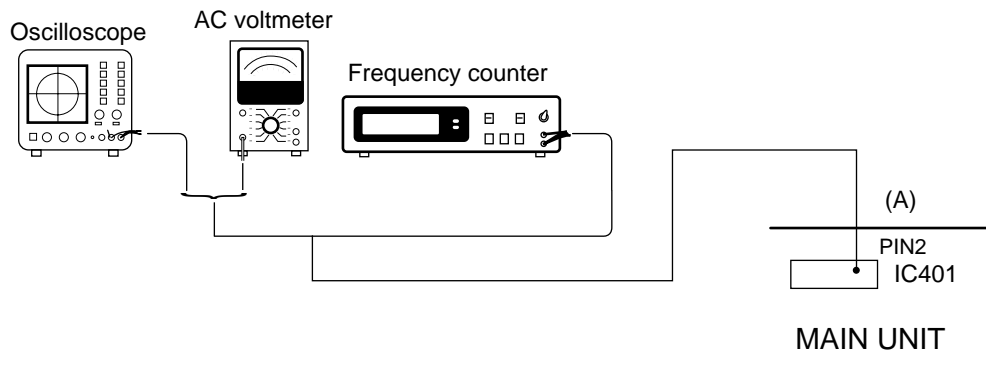
- The all LCD light up when the STOP key and TIMER SET key are pressed simultaneously, while the power is ON.
- When the ON/STANDBY key is pressed, the all LCD light on mode is canceled.

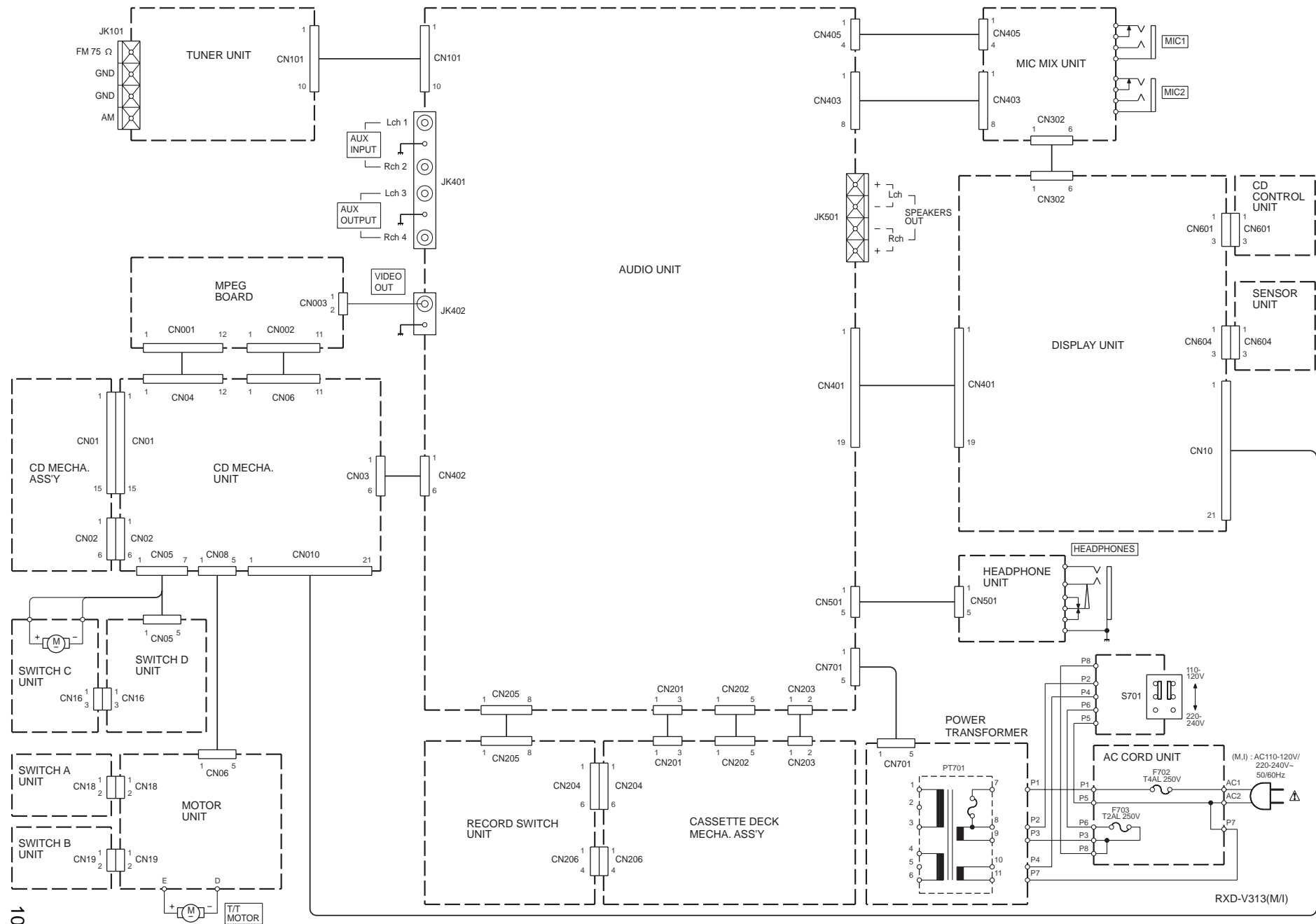
ADJUSTMENT

CASSETTE DECK SECTION

NO.	ITEM	INPUT SETTINGS	OUTPUT SETTINGS	CASSETTE TAPE DECK SETTINGS	ALIGNMENT POINT	ALGN FOR	FIG.
Unless otherwise specified : each ; switch should be set as follows : BEAT SW : OFF I. Cassette mechanism section (REC/PB head adjustment)							0dBs = 0.775V
[1]	Demagnetization and cleaning	-	-	Power OFF, demagnetization, cleaning play	REC/PB head, erase head, capstan, pinch roller	Demagnetize the REC/PB head by head eraser. Clean the REC/PB head, erase head capstan and pinch roller with a cotton swab immersed in alcohol.	
[2]	REC/PB head azimuth	MTT-114, TCC-153 SCC-1727 10 kHz, -10dB	(A)	PLAY	Azimuth adjustment screw	In a setting wher the output is maximized, adjust the azimuth adjustment screw so that the Lissajous figure appearing on the oscilloscope screen comes near to a line slanted45° Note : The head should be installed in such a manner that it approaches the tape face.	
II. PC board adjustment							
< 1 >	Tape speed	MTT-111 TCC-100 SCC-1727 3 kHz, -4 dB	(A)	PLAY	SFR201	Adjust so that Frequency is 3 kHz at the center of the tape.	
< 2 >	Playback level	TCC-120 315 Hz 0dB	(A)	PLAY		Approx. -5dBm <i>f</i> reference level	
< 3 >	Recording level	Put standard test tape (TCC-120) into B deck. Put standard blank tape into A deck.	(A)	Dubbing and playback.		Approx. -5dBm <i>f</i> reference level	

INSTRUMENTS CONNECTION

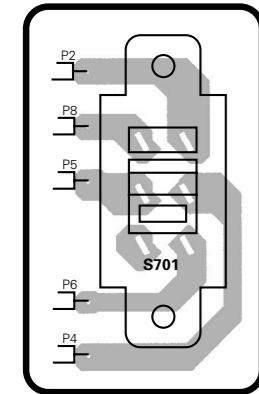




PC BOARD(Component side view)

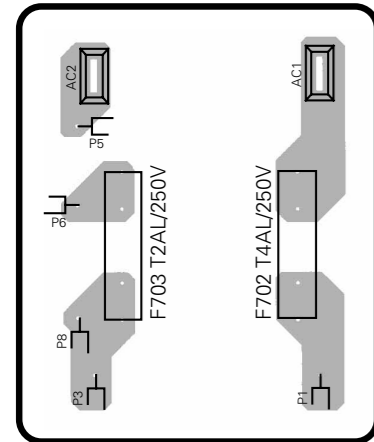
AUDIO UNIT

AC SW PCB



AC110-120V
↕
AC220-240V

AC CORD UNIT

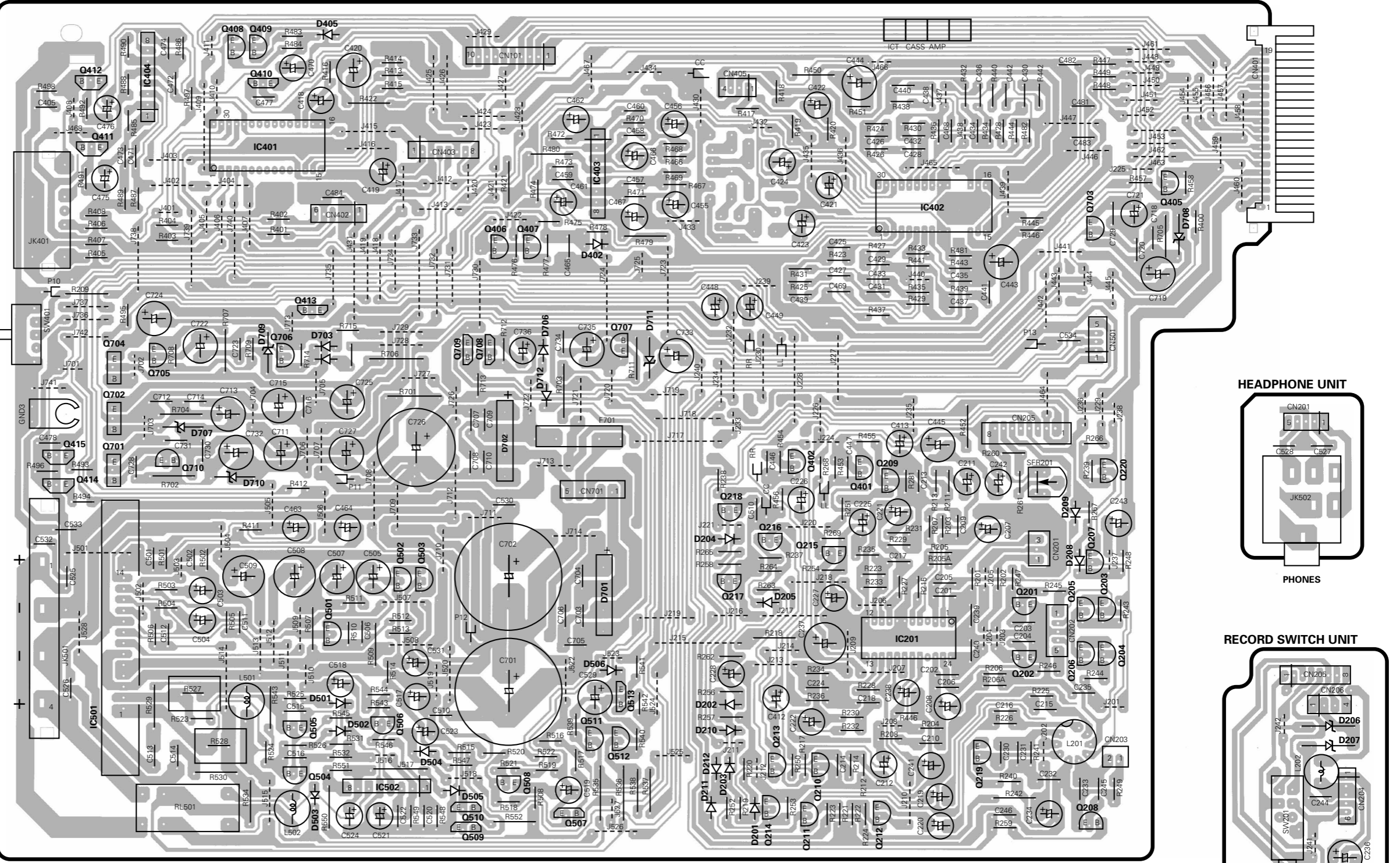


SPEAKERS
L
R

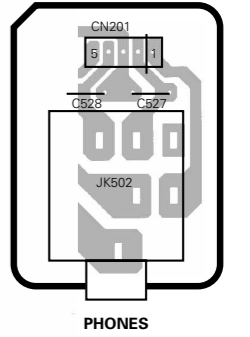
AUX OUT

AUX IN

BEAT CANCEL
1
2

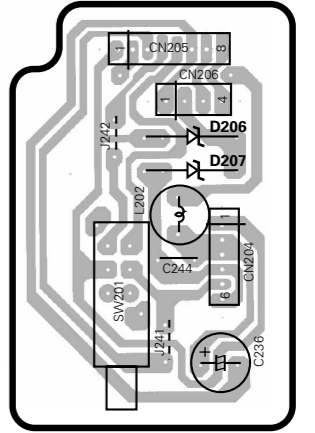


HEADPHONE UNIT



PHONES

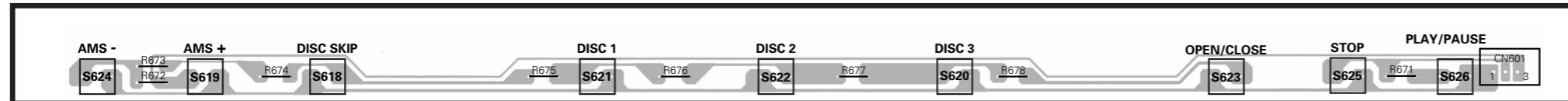
RECORD SWITCH UNIT



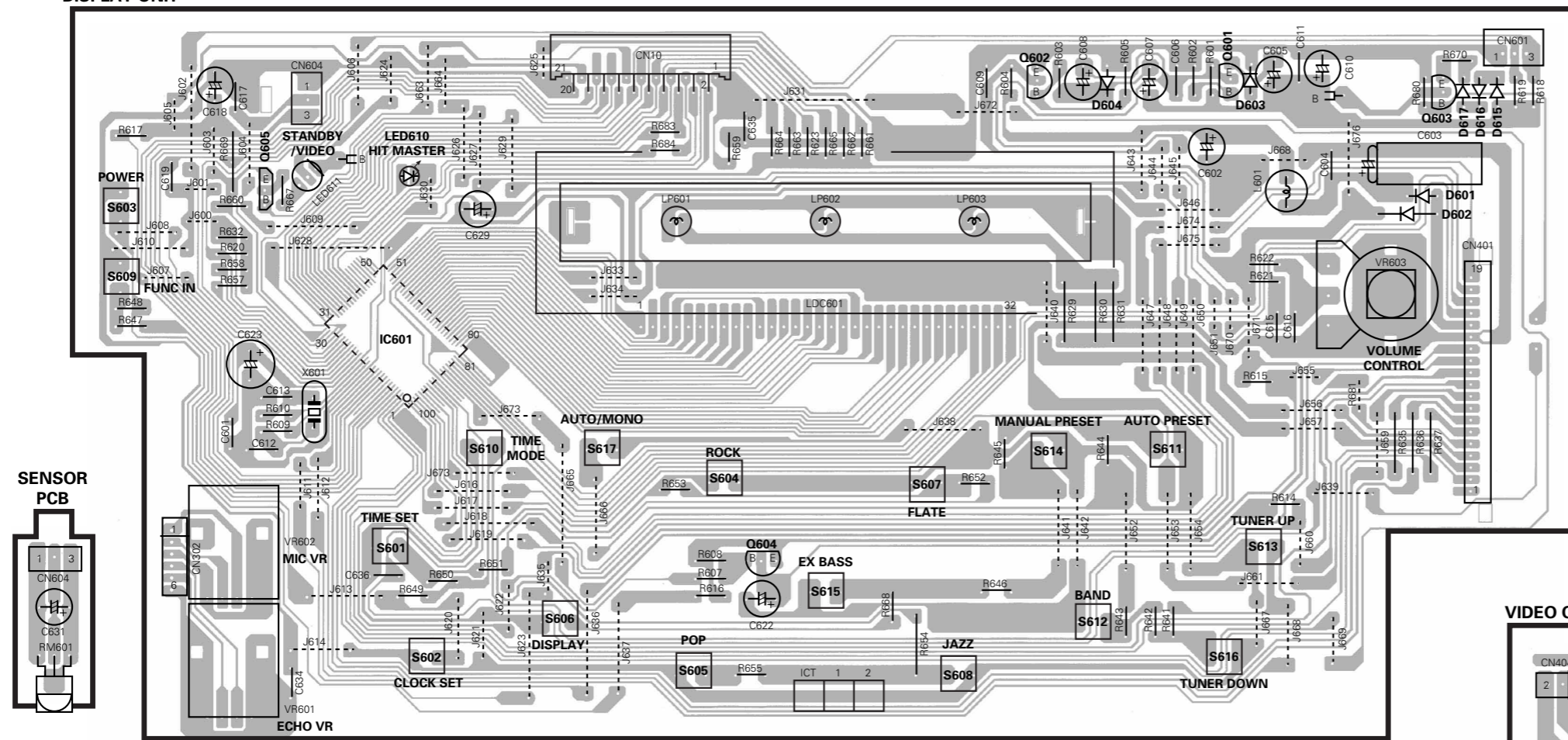
REC SW

PC BOARD(Component side view)

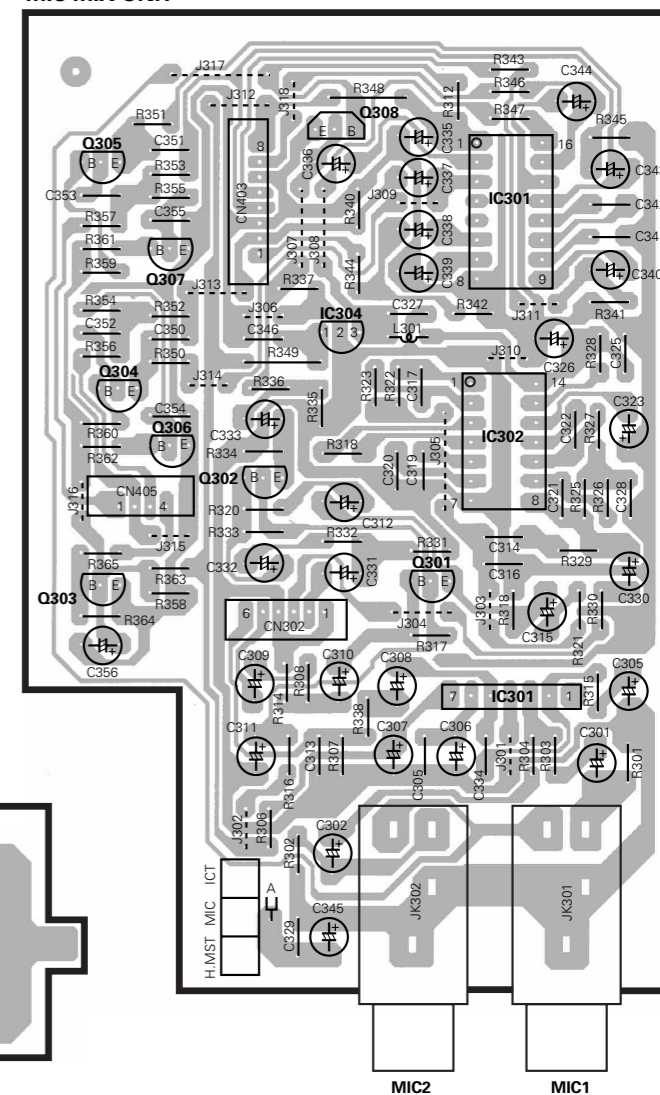
CD CONTROL PCB



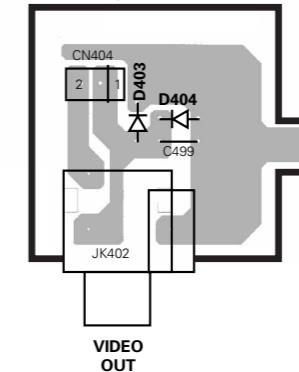
DISPLAY UNIT



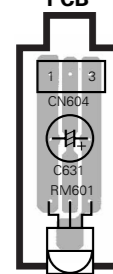
MIC MIX UNIT

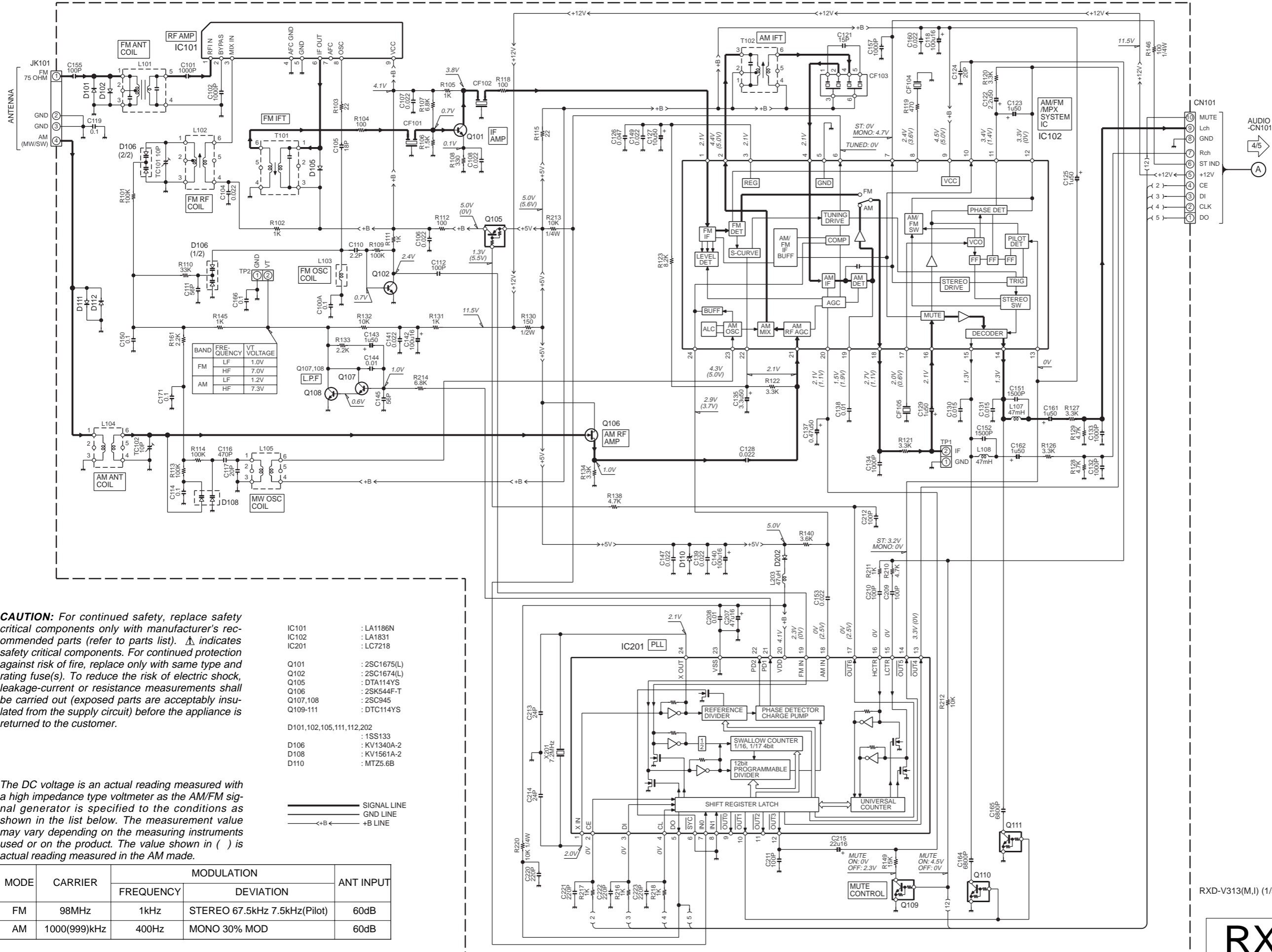


VIDEO O/P PCB



SENSOR PCB





CAUTION: For continued safety, replace safety critical components only with manufacturer's recommended parts (refer to parts list). ⚠ indicates safety critical components. For continued protection against risk of fire, replace only with same type and rating fuse(s). To reduce the risk of electric shock, leakage-current or resistance measurements shall be carried out (exposed parts are acceptably insulated from the supply circuit) before the appliance is returned to the customer.

- IC101 : LA1186N
- IC102 : LA1831
- IC201 : LC7218
- Q101 : 2SC1675(L)
- Q102 : 2SC1674(L)
- Q105 : DTA114YS
- Q106 : 2SK544F-T
- Q107,108 : 2SC945
- Q109-111 : DTC114YS
- D101,102,105,111,112,202 : 1SS133
- D106 : KV1340A-2
- D108 : KV1561A-2
- D110 : MT25.6B

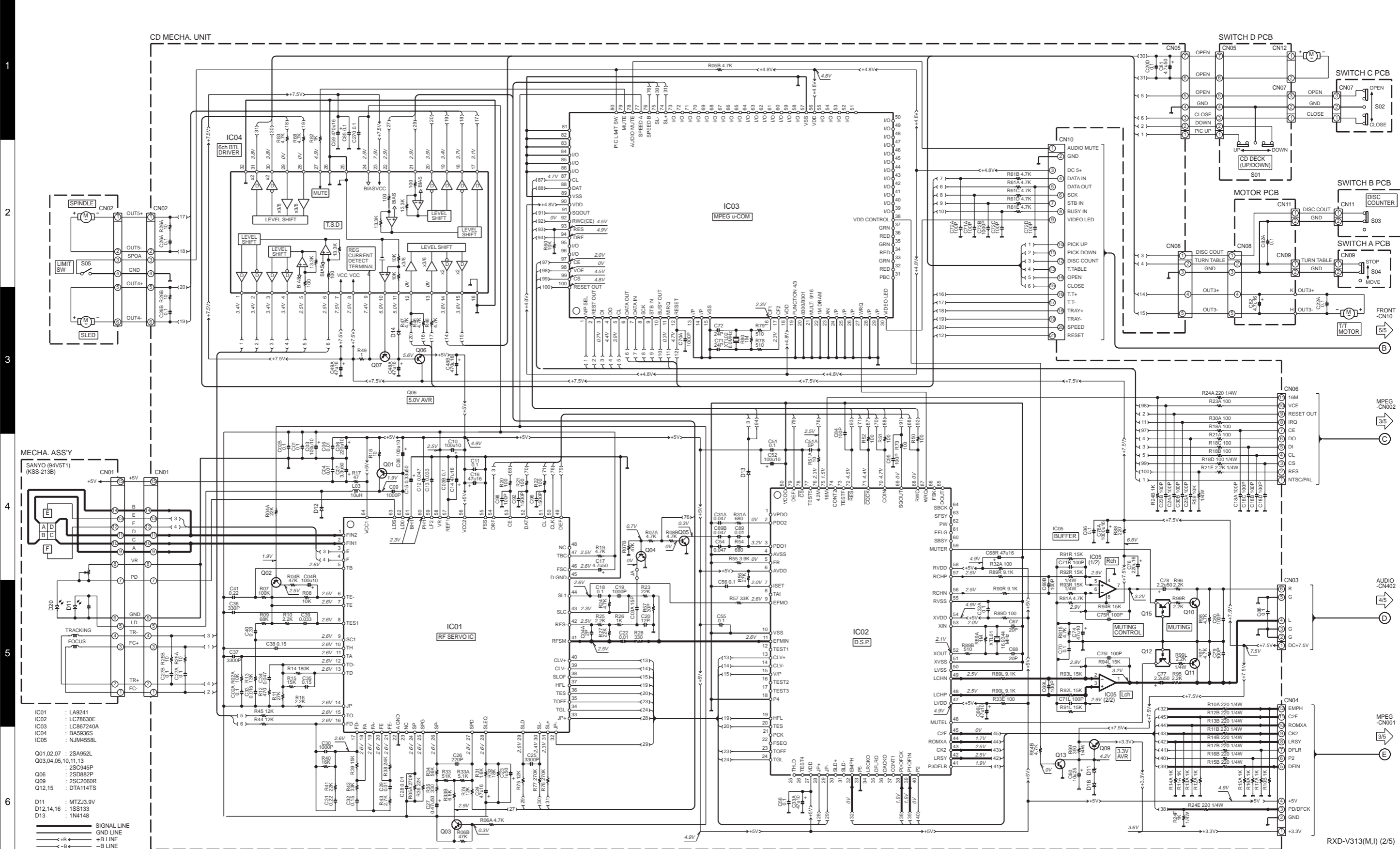
The DC voltage is an actual reading measured with a high impedance type voltmeter as the AM/FM signal generator is specified to the conditions as shown in the list below. The measurement value may vary depending on the measuring instruments used or on the product. The value shown in () is actual reading measured in the AM made.

— SIGNAL LINE
 — GND LINE
 ←+B→ +B LINE

MODE	CARRIER	MODULATION		ANT INPUT
		FREQUENCY	DEVIATION	
FM	98MHz	1kHz	STEREO 67.5kHz 7.5kHz(Pilot)	60dB
AM	1000(999)kHz	400Hz	MONO 30% MOD	60dB

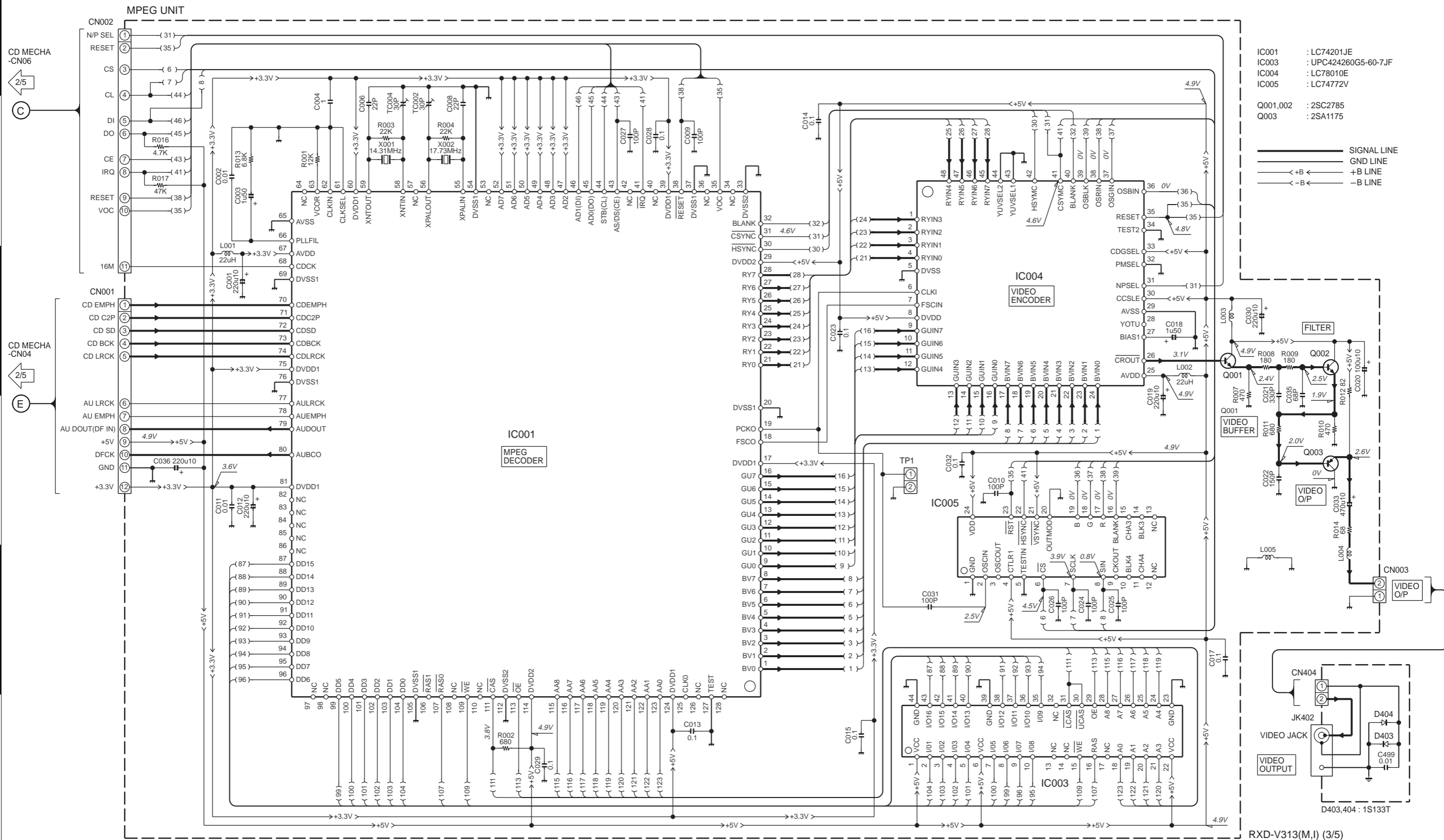
RXD-V313(M,I) (1/5)

RXD-V313
KENWOOD



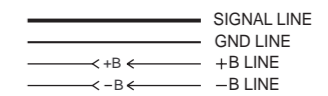
CAUTION: For continued safety, replace safety critical components only with manufacturer's recommended parts (refer to parts list). Δ indicates safety critical components. For continued protection against risk of fire, replace only with same type and rating fuse(s). To reduce the risk of electric shock, leakage-current or resistance measurements shall be carried out (exposed parts are acceptably insulated from the supply circuit) before the appliance is returned to the customer.

The DC voltage is an actual reading measured with a high impedance type voltmeter. The measurement value may vary depending on the measuring instruments used or on the product. Refer to the voltage during PLAY unless otherwise specified; The value shown in () is the voltage measured at the moment of STOP.



- IC001 : LC74201JE
- IC003 : UPC424260G5-60-7JF
- IC004 : LC78010E
- IC005 : LC74772V

- Q001,002 : 2SC2785
- Q003 : 2SA1175

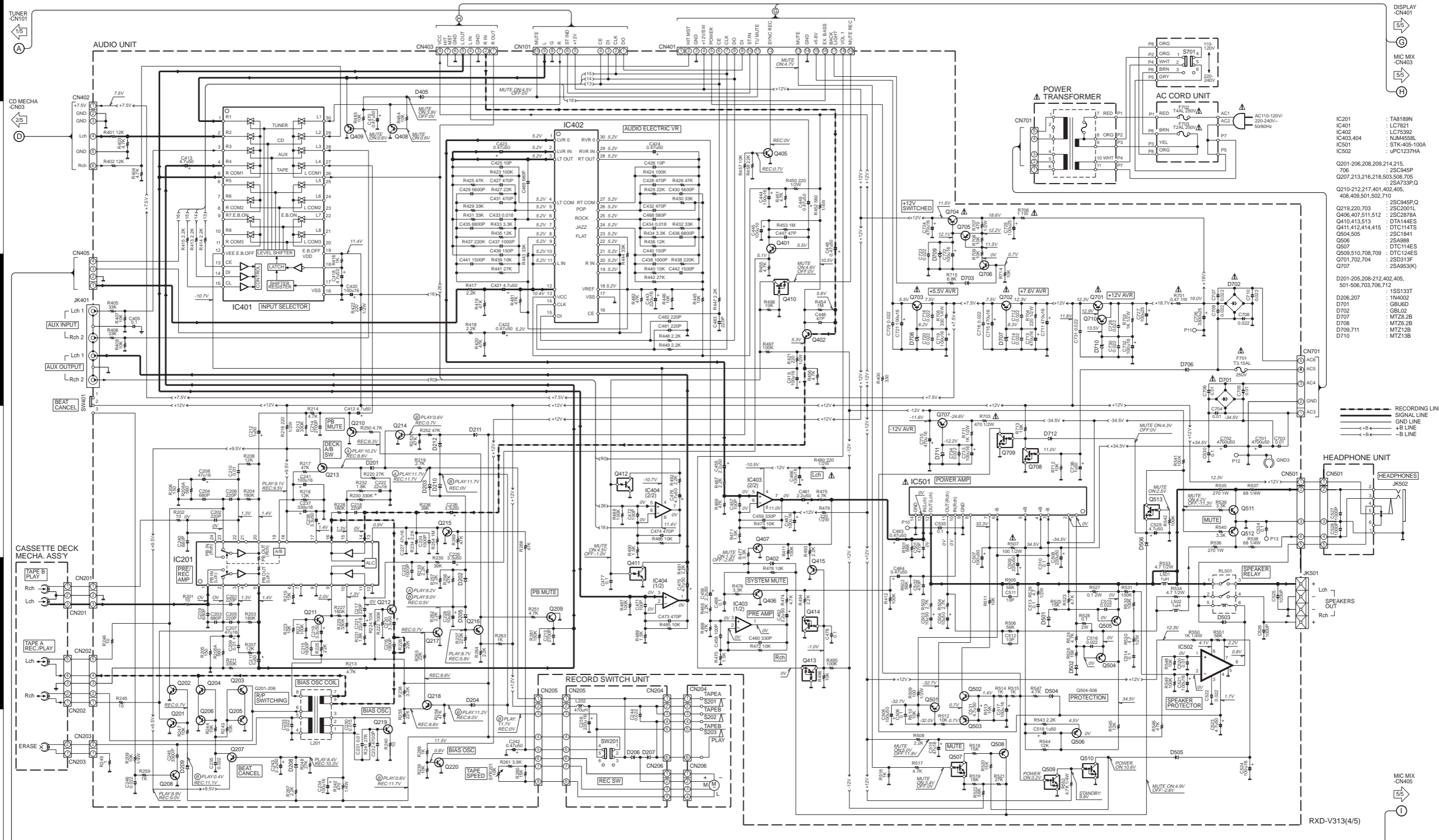


CAUTION: For continued safety, replace safety critical components only with manufacturer's recommended parts (refer to parts list). Δ indicates safety critical components. For continued protection against risk of fire, replace only with same type and rating fuse(s). To reduce the risk of electric shock, leakage-current or resistance measurements shall be carried out (exposed parts are acceptably insulated from the supply circuit) before the appliance is returned to the customer.

The DC voltage is an actual reading measured with a high impedance type voltmeter with no signal input. The measurement value may vary depending on the measuring instruments used or on the product.

RXD-V313
KENWOOD

RXD-V313(M,I) (3/5)



CAUTION: For continued safety, replace safety critical components only with manufacturer's recommended parts (refer to parts list). Δ indicates safety critical components. For continued protection against risk of fire, replace only with same type and rating fuse(s). To reduce the risk of electric shock, leakage-current or resistance measurements shall be carried out (exposed parts are acceptably insulated from the supply circuit) before the appliance is returned to the customer.

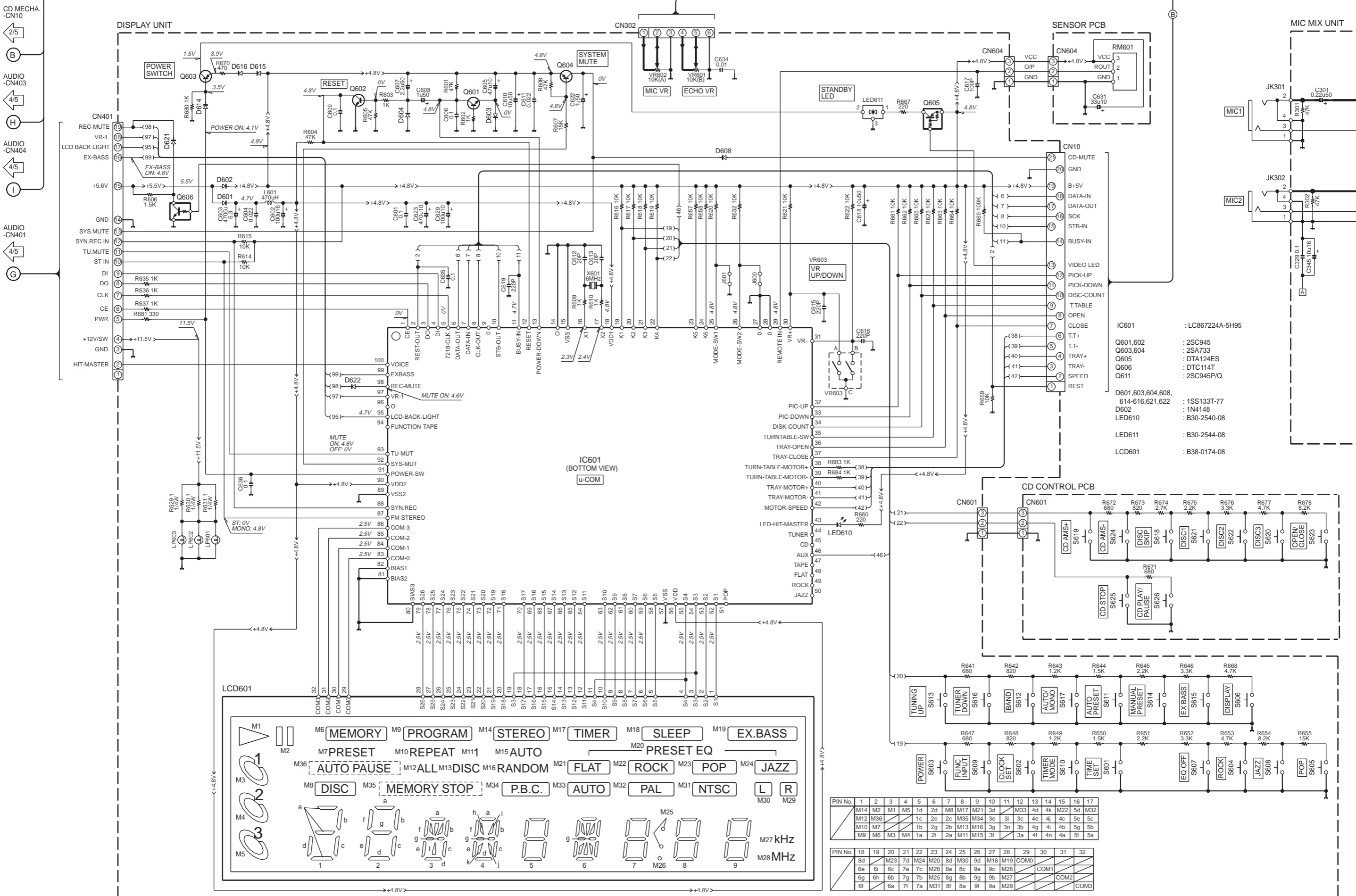
DOLBY and the double-D symbol are trademarks of Dolby Laboratories Licensing Corporation. Noise reduction circuit made under license from Dolby Laboratories Licensing Corporation.

The DC voltage is an actual reading measured with a high impedance type voltmeter with a cassette loaded at playback mode. The measurement value may vary depending on the measuring instruments used or on the product. Bias circuit DC voltage is measured while in the record mode.

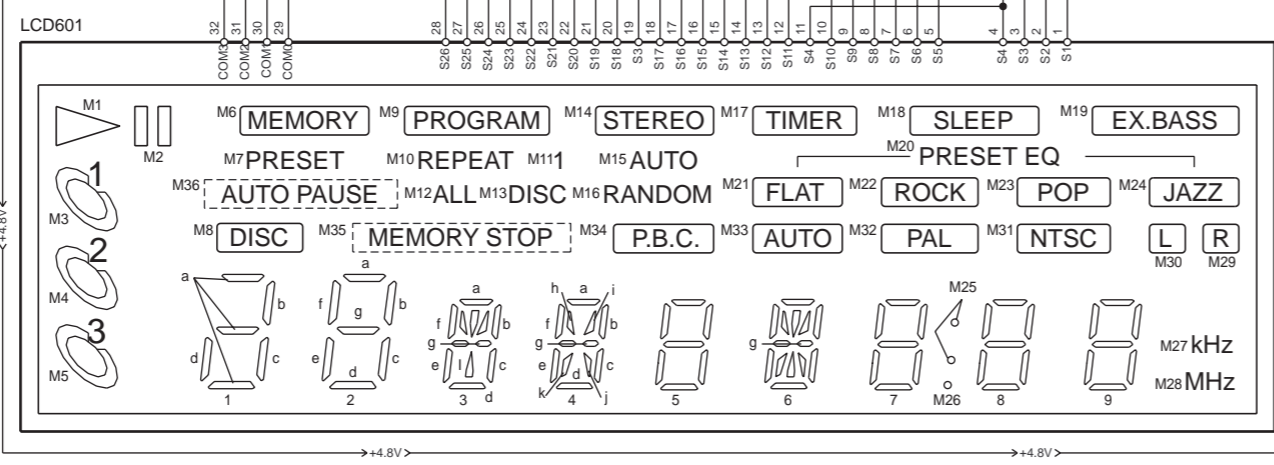
RXD-V313

Y39-2910-20

KENWOOD

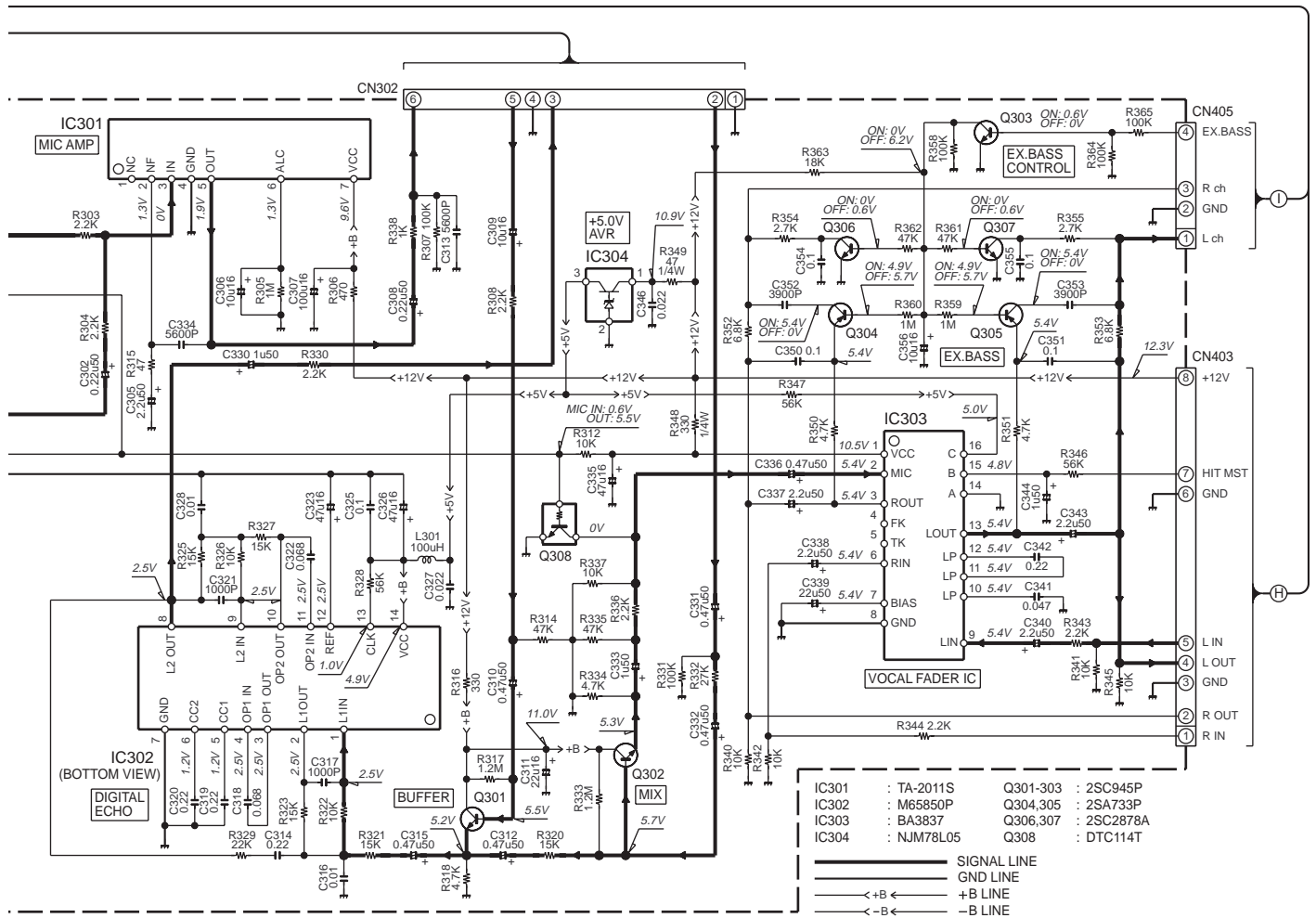


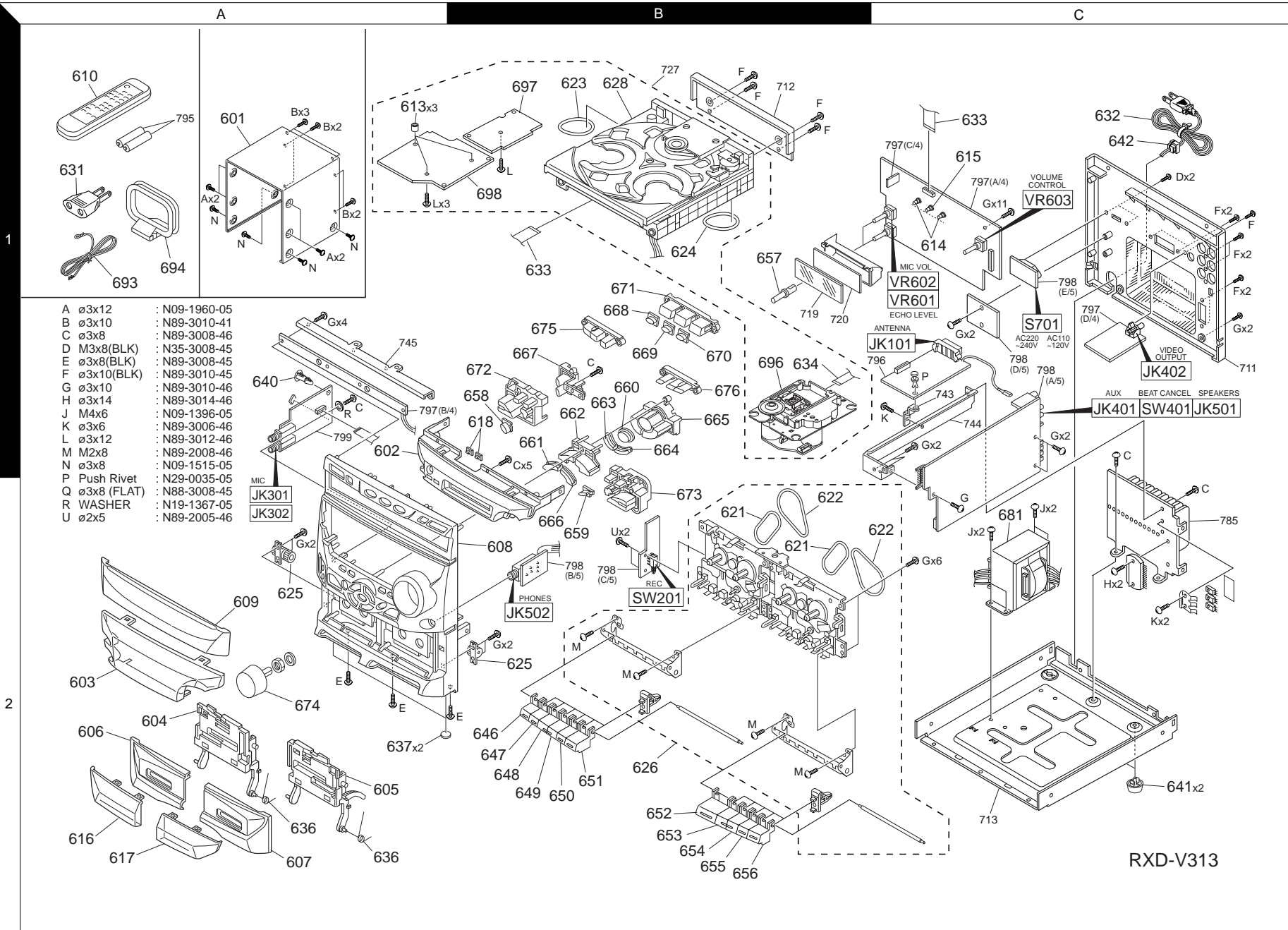
- IC601 : LC867224A-5H95
- Q601,602 : 2SC945
- Q603,604 : 2SA733
- Q605 : DTA124ES
- Q606 : DTC114T
- Q611 : 2SC945P/Q
- D601,603,604,608,614-616,621,622 : 1SS133T-77
- D602 : 1N4148
- LED610 : B30-2540-08
- LED611 : B30-2544-08
- LCD601 : B38-0174-08



PIN No.	1	2	3	4	5	6	7	8	9	10	11	12	13	14	15	16	17
M14	M2	M1	M5	1d	2d	M8	M17	M21	3d	M33	4d	4k	M22	5d	M32		
M12	M36			1c	2c	M35	M34	3e	3i	3c	4e	4j	4c	5e	5c		
M10	M7			1b	2g	2b	M13	M16	3g	3n	3b	4g	4i	4b	5g	5b	
M9	M6	M3	M4	1a	2f	2a	M11	M15	3f	3a	4f	4n	4a	5f	5a		

PIN No.	18	19	20	21	22	23	24	25	26	27	28	29	30	31	32
8d		M23	7d	M24	M20	8d	M30	9d	M18	M19	COM0				
6e	6i	6c	7e	7c	M26	8e	8c	9c	9c	M28		COM1			
6g	6h	6b	7g	7b	M25	8g	8b	9g	9b	M27			COM2		
6f		6a	7f	7a	M31	8f	8a	9f	9a	M29				COM3	





RXD-V313

* New Parts

Parts without **Parts No.** are not supplied.

Les articles non mentionnés dans le **Parts No.** ne sont pas fournis.

Teile ohne **Parts No.** werden nicht geliefert.

①

Ref. No	Add-ress	New Parts	Parts No.	Description	Desti-nation	Re-marks
RXD-V313						
601	1A		A01-3678-08	CABINET		
602	1A		A22-1819-08	SUB PANEL(FRONT CHASSIS)		
603	2A	*	A29-1048-08	FRONT GLASS		
604	2A		A53-2097-08	CASSETTE HOLDER(L)		
605	2A		A53-2098-08	CASSETTE HOLDER(R)		
606	2A	*	A53-2103-08	CASSETTE LID(L)		
607	2A	*	A53-2104-08	CASSETTE LID(R)		
608	2B	*	A60-1575-08	FRONT PANEL		
609	2A	*	A60-1579-08	PANEL(CD)		
610	1A	*	A70-1261-08	REMOTE CONTROLLER(RC-V313)		
613	1A	*	B09-0264-08	BOSS CUP D22 SUPPLY		
614	1C		B09-0262-08	LAMP CAP		
615	1C		B09-0263-08	LED COVER		
616	2A		B10-3450-08	FRONT GLASS(CASSETTE)L		
617	2A		B10-3451-08	FRONT GLASS(CASSETTE)R		
618	1B		B19-1602-08	INDICATOR(LED LENS)		
-		*	B60-3891-08	INSTRUCTION MANUAL(ENGLISH)		
-		*	B60-3892-08	INSTRUCTION MANUAL(TAIWAN)		
-		*	B60-3893-08	INSTRUCTION MANUAL(SPANISH)		
621	2B		D16-0725-08	F BELT(CASSETTE DECK)		
622	2B, 2C		D16-0726-08	M BELT(CASSETTE DECK)		
623	1B		D16-0727-08	LOADING BELT(CD)		
624	1B		D16-0728-08	LOADING GEAR BELT(CD)		
625	2A, 2B		D39-0325-08	GEAR DAMPER		
626	2B		D40-1621-08	CASSETTE MECHANISM.4380605120		
628	1B	*	D40-1633-08	CD MECHANISM ASSY(920F-C1)		
△ 631	1A		E03-0115-05	AC PLUG ADAPTER		
△ 632	1C		E30-2906-08	AC POWER CORD		
633	1B, 1C	*	E35-2307-08	FFC 21P 160MM CN10-CD ASSY		
634	1B	*	E35-2306-08	FLAT CABLE(15P)(CD CN01-CN01)		
636	2A		G01-4106-08	EJECT SPRING		
637	2A		G11-2432-08	FOOT RUBBER		
-			H10-7538-08	POLYSTYRENE FOAMED FIXTURE(L)		
-			H10-7539-08	POLYSTYRENE FOAMED FIXTURE(R)		
-			H21-0366-08	SOFT SEET(1500X700X0.5)		
-			H25-1527-08	POLY BAG		
-		*	H50-2999-08	ITEM CARTON CASE		
640	1A	*	J19-5970-08	UNIT HOLDER (SPACER SUPPORT)		
641	2C		J02-1433-08	FOOT(REAR)		
642	1C		J42-0330-08	CORD STOPPER		
646	2B		K29-7498-08	CASSETTE RECORD BUTTON(A)		
647	2B		K29-7499-08	CASSETTE PLAY BUTTON(A)		
648	2B		K29-7500-08	CASSETTE REWIND BUTTON(A)		
649	2B		K29-7501-08	CASSETTE FAST FORWARD BUTTON(A)		
650	2B		K29-7502-08	CASSETTE STOP/EJECT BUTTON(A)		
651	2B		K29-7503-08	CASSETTE PAUSE BUTTON(A)		
652	2B		K29-7504-08	CASSETTE PLAY BUTTON(B)		
653	2B		K29-7505-08	CASSETTE REWIND BUTTON(B)		
654	2B		K29-7506-08	CASSETTE FAST FORWARD BUTTON(B)		
655	2B		K29-7507-08	CASSETTE STOP/EJECT BUTTON(B)		
656	2B		K29-7508-08	CASSETTE PAUSE BUTTON(B)		

L : Scandinavia K : USA P : Canada R : Mexico C : China I : Malaysia
 Y : PX(Far East, Hawaii) T : Europe E : Europe G : Germany V : China(Shanghai)
 Y : AAFES(Europe) X : Australia Q : Russia H : Korea M : Other Areas △ indicates safety critical components.

* New Parts

Parts without **Parts No.** are not supplied.

Les articles non mentionnés dans le **Parts No.** ne sont pas fournis.

Teile ohne **Parts No.** werden nicht geliefert.

②

Ref. No	Add-ress	New Parts	Parts No.	Description	Desti-nation	Re-marks
657	1B		K29-7509-08	KNOB(MIC)		
658	1B		K29-7511-08	KNOB(MODE)		
659	2B		K29-7519-08	KNOB(BAND)		
660	1B		K29-7512-08	KNOB(EX.BASS)		
661	1B		K29-7513-08	KNOB(ROCK)		
662	1B		K29-7514-08	KNOB(BASE ROCK)		
663	1B		K29-7515-08	KNOB(POP)		
664	1B		K29-7516-08	KNOB(JAZZ)		
665	1B		K29-7517-08	KNOB(BASE JAZZ)		
666	2B		K29-7518-08	KNOB(FLAT)		
667	1B		K29-7549-08	KNOB(ON STANDBY/INPUT)		
668	1B		K29-7521-08	KNOB(DISC 1)		
669	1B		K29-7522-08	KNOB(DISC 2)		
670	1B		K29-7523-08	KNOB(DISC 3)		
671	1B		K29-7524-08	KNOB(BASE DISC)		
672	1B		K29-7530-08	KNOB(TIMER)		
673	2B		K29-7531-08	KNOB(TUNING)		
674	2A		K29-7535-08	KNOB(VOLUME)		
675	1B		K29-7533-08	KNOB(REPEAT)		
676	1B		K29-7534-08	KNOB(OPEN/CLOSE)		
△ 681	2C	*	L07-2706-08	POWER TRANSFORMER		
693	1A		T90-0801-05	LEAD WIRE ANTENNA(FM)		
694	1A		T90-0815-08	LOOP ANTENNA		
696	1B		T25-0079-08	TRAVERSE ASSY		
697	1B	*	W02-2683-08	MPEG PCB ASSY		
698	1B	*	W02-2686-08	CD PCB ASSY		
TUNER UNIT						
C100A			CK45FB1H104Z	CERAMIC	0.10UF	Z
C101, 102			C91-0757-05	CERAMIC	1000PF	K
C104			C91-0085-05	CERAMIC	0.022UF	N
C105			CC45FSL1H180J	CERAMIC	18PF	J
C106-108			C91-0085-05	CERAMIC	0.022UF	N
C110			C91-0713-05	CERAMIC	2.2PF	K
C111			C91-0739-05	CERAMIC	56PF	J
C112			C91-0745-05	CERAMIC	100PF	K
C114			CK45FB1H104Z	CERAMIC	0.10UF	Z
C116			CQ93FMG1H471J	MYLAR	470PF	J
C117			CC45FSL1H200J	CERAMIC	20PF	J
C118			CE04KW1C101M	ELECTRO	100UF	16WV
C119			CK45FB1H104Z	CERAMIC	0.10UF	Z
C121			C91-0725-05	CERAMIC	15PF	J
C122			CE04KW1H2R2M	ELECTRO	2.2UF	50WV
C123			CE04KW1H010M	ELECTRO	1.0UF	50WV
C124			CC45FSL1H200J	CERAMIC	20PF	J
C125			CE04KW1H010M	ELECTRO	1.0UF	50WV
C126			CK45FB1H473Z	CERAMIC	0.047UF	Z
C127			CE04KW1H100M	ELECTRO	10UF	50WV
C128			C91-0085-05	CERAMIC	0.022UF	N
C129			CE04KW1H010M	ELECTRO	1.0UF	50WV
C130, 131			CQ92FM1H153J	MYLAR	0.015UF	J
C132, 133			CQ92FM1H102J	MYLAR	1000PF	J
C134			C91-0757-05	CERAMIC	1000PF	K
C135			CE04KW1H3R3M	ELECTRO	3.3UF	50WV

L : Scandinavia K : USA P : Canada R : Mexico C : China I : Malaysia
 Y : PX(Far East, Hawaii) T : Europe E : Europe G : Germany V : China(Shanghai)
 Y : AAFES(Europe) X : Australia Q : Russia H : Korea M : Other Areas △ indicates safety critical components.

PARTS LIST

RXD-V313

* New Parts
Parts without **Parts No.** are not supplied.
Les articles non mentionnés dans le **Parts No.** ne sont pas fournis.
Teile ohne **Parts No.** werden nicht geliefert.

3

Ref. No	Add-ress	New Parts	Parts No.	Description	Desti-nation	Re-marks
C137			CE04KW1HR47M	ELECTRO 0.47UF 50WV		
C138			C91-0769-05	CERAMIC 0.010UF K		
C139			C91-0085-05	CERAMIC 0.022UF N		
C140			CE04KW1C101M	ELECTRO 100UF 16WV		
C141			C91-0085-05	CERAMIC 0.022UF N		
C142			CE04KW1C101M	ELECTRO 100UF 16WV		
C143			CE04KW1H010M	ELECTRO 1.0UF 50WV		
C144			C91-0769-05	CERAMIC 0.010UF K		
C145			C91-0739-05	CERAMIC 56PF J		
C147			C91-0085-05	CERAMIC 0.022UF N		
C149			C91-0085-05	CERAMIC 0.022UF N		
C150			CK45FB1H104Z	CERAMIC 0.10UF Z		
C151, 152			C91-0759-05	CERAMIC 1500PF M		
C153			C91-0085-05	CERAMIC 0.022UF N		
C155			C91-0745-05	CERAMIC 100PF K		
C157			C91-0757-05	CERAMIC 1000PF K		
C160			C91-0085-05	CERAMIC 0.022UF N		
C161, 162			CE04KW1H010M	ELECTRO 1.0UF 50WV		
C164, 165			CK45FB1H682K	CERAMIC 6800PF K		
C166			CK45FB1H104Z	CERAMIC 0.10UF Z		
C171			CK45FB1H104Z	CERAMIC 0.10UF Z		
C207			CE04KW1C470M	ELECTRO 47UF 16WV		
C208			C91-0769-05	CERAMIC 0.010UF K		
C209			C91-0745-05	CERAMIC 100PF K		
C210~212			C91-0745-05	CERAMIC 100PF K		
C213, 214			CC45FCH1H240J	CERAMIC 24PF J		
C215			CE04KW1C220M	ELECTRO 22UF 16WV		
C220~223			C91-0749-05	CERAMIC 220PF K		
TC101, 102			C05-0238-08	TRIMMER CON 10PS TZ-03N100TR		
CN101			E40-8336-08	PIN ASSY (10P)		
JK101			E70-0070-08	ANTENNA TERMINAL(4P)		
CF101			L72-0591-08	CERAMIC F SFE10.7MA5 RED		
CF102			L72-0586-08	CERAMIC F SFE10.7MSG3GYM RED		
CF103			L72-0587-08	CERAMIC F SFZ450B		
CF104			L78-0651-08	RESONATOR CDA10.7MG43-A		
CF105			L78-0641-08	RESONATOR CSB456F15		
L101			L31-0622-08	FM ANT COIL PC-8474-1		
L102			L31-0623-08	FM RF COIL PC-8867		
L103			L32-0584-08	FM OSC COIL R22-F036X ORG		
L104			L31-0618-08	AM ANT COIL TWS-358-762		
L105			L32-0581-08	MW OSC COIL TWS-358-751		
L107, 108			L39-1340-08	INDUCTANCE 473K		
L203			L39-1344-08	P. COIL 470K-T		
T101			L30-0926-08	FM IFT TWS-358-412		
T102			L30-0922-08	AM IFT R22-E792		
X201			L77-2243-08	X'TAL(7.2MHZ)		
R130			RD14GB2H151J	FL-PROOF RD 150 J 1/2W		
D101, 102			1SS133T	DIODE		
D105			1SS133T	DIODE		
D106			KV1340A-2	DIODE		
D108			KV1561A-2	DIODE		
D110			MTZ5.6B	ZENER DIODE		
D111, 112			1SS133T	DIODE		

L : Scandinavia K : USA P : Canada R : Mexico C : China I : Malaysia
Y : PX(Far East, Hawaii) T : Europe E : Europe V : China(Shanghai)
Y : AAFES(Europe) X : Australia Q : Russia H : Korea M : Other Areas Δ indicates safety critical components.

* New Parts
Parts without **Parts No.** are not supplied.
Les articles non mentionnés dans le **Parts No.** ne sont pas fournis.
Teile ohne **Parts No.** werden nicht geliefert.

4

Ref. No	Add-ress	New Parts	Parts No.	Description	Desti-nation	Re-marks
IC101			LA1186N	IC		
IC102			LA1831	IC(AM/FM TUNER)		
IC201			LC7218	IC(PLL FREQUENCY SYNTHESIZER)		
Q101			2SC1675(L)	TRANSISTOR		
Q102			2SC1674(L)	TRANSISTOR		
Q105			DTA114YS	TRANSISTOR		
Q106			2SK544F-T	FET		
Q107, 108			2SC945	TRANSISTOR		
Q109~111			DTC114YS	TRANSISTOR		
AUDIO UNIT						
C201, 202			CK45FB1H221K	CERAMIC 220PF K		
C203, 204			CK45FB1H681K	CERAMIC 680PF K		
C205, 206			CK45FB1H221K	CERAMIC 220PF K		
C207, 208			CE04KW1C470M	ELECTRO 47UF 16WV		
C209, 210			CQ92FM1H103J	MYLAR 0.010UF J		
C211, 212			CE04KW1H1R0M	ELECTRO 1.0UF 50WV		
C213, 214			CK45FB1H272K	CERAMIC 2700PF K		
C215, 216			CK45FB1H182K	CERAMIC 1800PF K		
C217, 218			CK45FB1H221K	CERAMIC 220PF K		
C219, 220			CE04KW1H3R3M	ELECTRO 3.3UF 50WV		
C221, 222			CE04KW1C220M	ELECTRO 22UF 16WV		
C223, 224			CK45FB1H102K	CERAMIC 1000PF K		
C225, 226			CE04KW1H3R3M	ELECTRO 3.3UF 50WV		
C227			CE04KW1C470M	ELECTRO 47UF 16WV		
C228			CE04KW1H100M	ELECTRO 10UF 50WV		
C230			CQ93FMG2A153J	MYLAR 0.015UF J		
C231			CQ92FM1H103J	MYLAR 0.010UF J		
C232			CQ92FM1H472J	MYLAR 4700PF J		
C233			CQ92FM1H223J	MYLAR 0.022UF J		
C234			CE04KW1C101M	ELECTRO 100UF 16WV		
C235			CK45FB1E223Z	CERAMIC 0.022UF Z		
C236			CE04KW1C102M	ELECTRO 1000UF 16WV		
C237			CE04KW1C331M	ELECTRO 330UF 16WV		
C238			CE04KW1H3R3M	ELECTRO 3.3UF 50WV		
C239, 240			CK45FB1H681K	CERAMIC 680PF K		
C241			CE04KW1C101M	ELECTRO 100UF 16WV		
C242			CE04KW1HR47M	ELECTRO 0.47UF 50WV		
C243			CE04KW1H2R2M	ELECTRO 2.2UF 50WV		
C244			CK45FB1E223Z	CERAMIC 0.022UF Z		
C245		*	CQ93FMG2A332J	MYLAR 3300PF J		
C246			CK45FB1E223Z	CERAMIC 0.022UF Z		
C405			C91-1525-08	CERAMIC 0.1UF Z		
C412, 413			CE04KW1H4R7M	ELECTRO 4.7UF 50WV		
C418			CE04KW1H4R7M	ELECTRO 4.7UF 50WV		
C419, 420			CE04KW1C101M	ELECTRO 100UF 16WV		
C421~424			CE04KW1HR47M	ELECTRO 0.47UF 50WV		
C425, 426			CC45FSL1H100J	CERAMIC 10PF J		
C427, 428			CK45FB1H471K	CERAMIC 470PF K		
C429, 430			CQ92FM1H562J	MYLAR 5600PF J		
C431, 432			CK45FB1H471K	CERAMIC 470PF K		
C433, 434			CQ92FM1H183J	MYLAR 0.018UF J		
C435, 436			CK45FB1H682K	CERAMIC 6800PF K		
C437, 438			CK45FB1H102K	CERAMIC 1000PF K		
C439, 440			CK45FB1H151K	CERAMIC 150PF K		
C441, 442			CK45FB1H152K	CERAMIC 1500PF K		

L : Scandinavia K : USA P : Canada R : Mexico C : China I : Malaysia
Y : PX(Far East, Hawaii) T : Europe E : Europe V : China(Shanghai)
Y : AAFES(Europe) X : Australia Q : Russia H : Korea M : Other Areas Δ indicates safety critical components.

* New Parts

Parts without **Parts No.** are not supplied.

Les articles non mentionnés dans le **Parts No.** ne sont pas fournis.

Teile ohne **Parts No.** werden nicht geliefert.

5

Ref. No	Add-ress	New Parts	Parts No.	Description	Desti-nation	Re-marks
C443			CE04KW1C221M	ELECTRO 220UF 16WV		
C444, 445			CE04KW1C101M	ELECTRO 100UF 16WV		
C446, 447			CC45FSL1H470J	CERAMIC 47PF J		
C448, 449			CE04KW1HR47M	ELECTRO 0.47UF 50WV		
C455, 456			CE04KW1H2R2M	ELECTRO 2.2UF 50WV		
C457, 458			CK45FB1H101K	CERAMIC 100PF K		
C459, 460			CK45FB1H331K	CERAMIC 330PF K		
C461, 462			CE04KW1H2R2M	ELECTRO 2.2UF 50WV		
C463, 464			CE04KW1HR47M	ELECTRO 0.47UF 50WV		
C465			C91-1525-08	CERAMIC 0.1UF Z		
C466, 467			CE04KW1C101M	ELECTRO 100UF 16WV		
C468, 469			CK45FB1H681K	CERAMIC 680PF K		
C470			CE04KW1HR47M	ELECTRO 0.47UF 50WV		
C471, 472			CK45FB1H101K	CERAMIC 100PF K		
C473, 474			CK45FB1H471K	CERAMIC 470PF K		
C475, 476			CE04KW1H4R7M	ELECTRO 4.7UF 50WV		
C477, 478			C91-1525-08	CERAMIC 0.1UF Z		
C481-483			CK45FB1H221K	CERAMIC 220PF K		
C499			CK45FB1H104Z	CERAMIC 0.10UF Z		
C501, 502			CK45FB1H471K	CERAMIC 470PF K		
C503, 504			CE04KW1H100M	ELECTRO 10UF 50WV		
C505			CE04KW1H101M	ELECTRO 100UF 50WV		
C506			C91-1525-08	CERAMIC 0.1UF Z		
C507			CE04KW1H101M	ELECTRO 100UF 50WV		
C508, 509			CE04KW1H221M	ELECTRO 220UF 50WV		
C510			C91-1525-08	CERAMIC 0.1UF Z		
C511, 512			CC45FSL1H100J	CERAMIC 10PF J		
C513, 514			CQ92FM1H104J	MYLAR 0.10UF J		
C515, 516			CK45FB1E223Z	CERAMIC 0.022UF Z		
C517			CE04KW1C101M	ELECTRO 100UF 16WV		
C518			CE04KW1H1R0M	ELECTRO 1.0UF 50WV		
C519			CE04KW1C470M	ELECTRO 47UF 16WV		
C520			CK45FB1H103K	CERAMIC 0.010UF K		
C521			CE04KW1C101M	ELECTRO 100UF 16WV		
C522			CK45FB1E223Z	CERAMIC 0.022UF Z		
C523			CE04KW1H4R7M	ELECTRO 4.7UF 50WV		
C524			CE04KW1C101M	ELECTRO 100UF 16WV		
C525, 526			CK45FB1H102K	CERAMIC 1000PF K		
C527, 528			CK45FB1H102K	CERAMIC 1000PF K		
C529			CE04KW1H4R7M	ELECTRO 4.7UF 50WV		
C530			C91-1525-08	CERAMIC 0.1UF Z		
C531			CE04KW1H4R7M	ELECTRO 4.7UF 50WV		
C534, 535			C91-1525-08	CERAMIC 0.1UF Z		
C701, 702			CE04KW1H472M	ELECTRO 4700UF 50WV		
C703-706			CK45FB1E103Z	CERAMIC 0.010UF Z		
C707-710			CK45FB1E223Z	CERAMIC 0.022UF Z		
C711			CE04KW1C471M	ELECTRO 470UF 16WV		
C712			CK45FB1E223Z	CERAMIC 0.022UF Z		
C713			CE04KW1C471M	ELECTRO 470UF 16WV		
C714			CK45FB1E223Z	CERAMIC 0.022UF Z		
C715			CE04KW1C471M	ELECTRO 470UF 16WV		
C716			CK45FB1E223Z	CERAMIC 0.022UF Z		
C718			CK45FB1E223Z	CERAMIC 0.022UF Z		
C719			CE04KW1C101M	ELECTRO 100UF 16WV		
C720			CK45FB1E223Z	CERAMIC 0.022UF Z		

L : Scandinavia K : USA P : Canada R : Mexico C : China I : Malaysia

Y : PX(Far East, Hawaii) T : Europe E : Europe G : Germany V : China(Shanghai)

Y : AAFES(Europe) X : Australia Q : Russia H : Korea M : Other Areas

Δ indicates safety critical components.

* New Parts

Parts without **Parts No.** are not supplied.

Les articles non mentionnés dans le **Parts No.** ne sont pas fournis.

Teile ohne **Parts No.** werden nicht geliefert.

6

Ref. No	Add-ress	New Parts	Parts No.	Description	Desti-nation	Re-marks
C721, 722			CE04KW1C101M	ELECTRO 100UF 16WV		
C723			CK45FB1E223Z	CERAMIC 0.022UF Z		
C724			CE04KW1C471M	ELECTRO 470UF 16WV		
C725			CE04KW1E101M	ELECTRO 100UF 25WV		
C726			CE04KW1E332M	ELECTRO 3300UF 25WV		
C727			CE04KW1E101M	ELECTRO 100UF 25WV		
C728-731			CK45FB1E223Z	CERAMIC 0.022UF Z		
C732, 733			CE04KW1C101M	ELECTRO 100UF 16WV		
C734			CK45FB1E223Z	CERAMIC 0.022UF Z		
C735			CE04KW1C471M	ELECTRO 470UF 16WV		
C736			CE04KW1H010M	ELECTRO 1.0UF 50WV		
CN201			E40-3261-05	PIN ASSY(3P)		
CN202		*	E40-8367-08	PIN ASSY(5P)		
CN203			E40-3260-05	PIN ASSY(2P)		
CN205			E40-9861-08	PIN ASSY(8P)		
CN401		*	E40-8368-08	PIN ASSY 19P(AUDIO UNIT)		
CN701			E40-9863-08	PIN ASSY(5P)		
JK401			E63-1076-08	PHONO JACK(4P)		
JK402			E63-1075-08	1P RCA JACK 4500800432		
JK501			E70-0108-08	LOCK TERMINAL BOARD(4P)		
JK502			E11-0386-08	JACK(H/P)		
Δ F701			F05-3121-05	FUSE T3.15AL250V		
Δ F702			F05-4025-05	FUSE T4AL250V		
Δ F703			F06-2021-05	FUSE T2AL250V		
L201			L32-1007-08	COIL(BIAS OSC)		
L202			L39-1375-08	MOTOR CHOKE COIL,4328247186		
L501, 502			L39-1341-08	COIL(SPRING) 1.0UH		
R218			RD14GB2H221J	FL-PROOF RD 220 J 1/2W		
R421, 422			RD14GB2H221J	FL-PROOF RD 220 J 1/2W		
R450			RD14GB2H221J	FL-PROOF RD 220 J 1/2W		
Δ R479, 480			RD14GB2H221J	FL-PROOF RD 220 J 1/2W		
Δ R507			RS14GB2H101J	FL-PROOF RS 100 J 1/2W		
R509			RS14GB2H101J	FL-PROOF RS 100 J 1/2W		
R527, 528			R92-1913-08	WIRE WOUND 0.1 J 2W		
R529, 530			RD14GB2H4R7J	FL-PROOF RD 4.7 J 1/2W		
R533, 534			RD14GB2H4R7J	FL-PROOF RD 4.7 J 1/2W		
R535, 536			RS14GB3A271J	FL-PROOF RS 270 J 1W		
Δ R701			RS14KB3AR47J	FL-PROOF RS 0.47 J 1W		
R702			RD14BB2H102J	RD 1.0K J 1/2W		
Δ R703			RS14GB2H471J	FL-PROOF RS 470 J 1/2W		
R704			RD14GB2H221J	FL-PROOF RD 220 J 1/2W		
Δ R706			RS14GB3A1R0J	FL-PROOF RS 1 J 1W		
R707			RS14GB2H471J	FL-PROOF RS 470 J 1/2W		
R711			RD14BB2H102J	RD 1.0K J 1/2W		
SFR201			R32-0006-08	TRIMMING POT BIAS		
RL501			S76-0048-08	MAGNETIC RELAY		
Δ S701			S62-0083-08	SLIDE SWITCH		
SW201			S68-0114-08	SWITCH		
SW401			S62-0057-08	SLIDE SWITCH(BEAT CANCEL)		
D201-205			1SS133T-77	DIODE		
D202			1SS133T	DIODE		
D206, 207			1N4002	DIODE		
D208-212			1SS133T-77	DIODE		

L : Scandinavia K : USA P : Canada R : Mexico C : China I : Malaysia

Y : PX(Far East, Hawaii) T : Europe E : Europe G : Germany V : China(Shanghai)

Y : AAFES(Europe) X : Australia Q : Russia H : Korea M : Other Areas

Δ indicates safety critical components.

PARTS LIST

RXD-V313

* New Parts
Parts without **Parts No.** are not supplied.
Les articles non mentionnés dans le **Parts No.** ne sont pas fournis.
Teile ohne **Parts No.** werden nicht geliefert.

7

Ref. No	Add-ress	New Parts	Parts No.	Description	Desti-nation	Re-marks
D402			1SS133T-77	DIODE		
D403, 404			1SS133T-77	DIODE		
D405			1SS133T-77	DIODE		
D501-506			1SS133T-77	DIODE		
D701			GBU6D	DIODE		
D702		*	GBL02	DIODE		
D703			1SS133T-77	DIODE		
D706			1SS133T-77	DIODE		
D707			MTZ8.2B	ZENER DIODE		
D708			MTZ6.2B	ZENER DIODE		
D709			MTZ12B	ZENER DIODE		
D710			MTZ13B	ZENER DIODE		
D711			MTZ12B	ZENER DIODE		
D712			1SS133T-77	DIODE		
IC201			TA8189N	IC		
IC401			LC7821	IC(FUNCTION CONTROL SWITCH)		
IC402			LC75392	IC		
IC403, 404			NUM4558L	IC(OP AMP X2)		
IC501			STK-405-100A	IC		
IC502			UPC1237HA	IC(POWER AMP)		
Q201-206			2SC945	TRANSISTOR		
Q207			2SA733	TRANSISTOR		
Q208			2SC945	TRANSISTOR		
Q209-212			2SC945	TRANSISTOR		
Q213			2SA733	TRANSISTOR		
Q214, 215			2SC945	TRANSISTOR		
Q216			2SA733	TRANSISTOR		
Q217			2SC945	TRANSISTOR		
Q218			2SA733	TRANSISTOR		
Q219, 220			2SC2001L	TRANSISTOR		
Q401, 402			2SC945	TRANSISTOR		
Q405			2SC945	TRANSISTOR		
Q406, 407			2SC2878A	TRANSISTOR		
Q408, 409			2SC945	TRANSISTOR		
Q410			DTA144ES	TRANSISTOR		
Q411, 412			DTC114TS	TRANSISTOR		
Q413			DTA144ES	TRANSISTOR		
Q414, 415			DTC114TS	TRANSISTOR		
Q501, 502			2SC945	TRANSISTOR		
Q503			2SA733	TRANSISTOR		
Q504, 505			2SC1841	TRANSISTOR		
Q506			2SA988	TRANSISTOR		
Q507			DTC114ES	TRANSISTOR		
Q508			2SA733	TRANSISTOR		
Q509, 510			DTC124ES	TRANSISTOR		
Q511, 512			2SC2878A	TRANSISTOR		
Q513			DTA144ES	TRANSISTOR		
Q701, 702			2SD313(F)	TRANSISTOR		
Q703			2SC2001L	TRANSISTOR		
Q704			2SD313(F)	TRANSISTOR		
Q705			2SA733	TRANSISTOR		
Q706			2SC945	TRANSISTOR		
Q707			2SA953(K)	TRANSISTOR		
Q708, 709			DTC124ES	TRANSISTOR		
Q710			2SC945	TRANSISTOR		

L : Scandinavia K : USA P : Canada R : Mexico C : China I : Malaysia
Y : PX(Far East, Hawaii) T : Europe E : Europe G : Germany V : China(Shanghai)
Y : AAFES(Europe) X : Australia Q : Russia H : Korea M : Other Areas Δ indicates safety critical components.

* New Parts
Parts without **Parts No.** are not supplied.
Les articles non mentionnés dans le **Parts No.** ne sont pas fournis.
Teile ohne **Parts No.** werden nicht geliefert.

8

Ref. No	Add-ress	New Parts	Parts No.	Description	Desti-nation	Re-marks
DISPLAY UNIT						
LCD601			B38-0174-08	LCD DISPLAY		
LED610			B30-2540-08	LED 3Q EL1254IT(RED)		
LED611		*	B30-2544-08	LED 3Q EL1259-7HWG(GRN/ORG)		
LP601-603			B30-2539-08	PILOT LAMP		
C301, 302			CE04KW1HR22M	ELECTRO	0.22UF	50WV
C305			CE04KW1H2R2M	ELECTRO	2.2UF	50WV
C306			CE04KW1C100M	ELECTRO	10UF	16WV
C307			CE04KW1C101M	ELECTRO	100UF	16WV
C308			CE04KW1HR22M	ELECTRO	0.22UF	50WV
C309			CE04KW1C100M	ELECTRO	10UF	16WV
C310			CE04KW1HR47M	ELECTRO	0.47UF	50WV
C311			CE04KW1C220M	ELECTRO	22UF	16WV
C312			CE04KW1HR47M	ELECTRO	0.47UF	50WV
C313			CK45FB1H562K	CERAMIC	5600PF	K
C314			CK45FB1H224Z	CERAMIC	0.22UF	Z
C315			CE04KW1HR47M	ELECTRO	0.47UF	50WV
C316			CK45FB1H103K	CERAMIC	0.010UF	K
C317			CK45FB1H102K	CERAMIC	1000PF	K
C318			CK45FB1H683K	CERAMIC	0.068UF	K
C319, 320			CK45FB1H224Z	CERAMIC	0.22UF	Z
C321			CK45FB1H102K	CERAMIC	1000PF	K
C322			CK45FB1H683K	CERAMIC	0.068UF	K
C323			CE04KW1C470M	ELECTRO	47UF	16WV
C325			CK45FB1H104Z	CERAMIC	0.10UF	Z
C326			CE04KW1C470M	ELECTRO	47UF	16WV
C327			CK45FB1E223Z	CERAMIC	0.022UF	Z
C328			CK45FB1H103K	CERAMIC	0.010UF	K
C329			CK45FB1H104Z	CERAMIC	0.10UF	Z
C330			CE04KW1H010M	ELECTRO	1.0UF	50WV
C331, 332			CE04KW1HR47M	ELECTRO	0.47UF	50WV
C333			CE04KW1H010M	ELECTRO	1.0UF	50WV
C334			CK45FB1H562K	CERAMIC	5600PF	K
C335			CE04KW1C470M	ELECTRO	47UF	16WV
C336			CE04KW1HR47M	ELECTRO	0.47UF	50WV
C337, 338			CE04KW1H2R2M	ELECTRO	2.2UF	50WV
C339			CE04KW1H220M	ELECTRO	22UF	50WV
C340			CE04KW1H2R2M	ELECTRO	2.2UF	50WV
C341			CK45FB1H473Z	CERAMIC	0.047UF	Z
C342			CK45FB1H224Z	CERAMIC	0.22UF	Z
C343			CE04KW1H2R2M	ELECTRO	2.2UF	50WV
C344			CE04KW1H010M	ELECTRO	1.0UF	50WV
C345			CE04KW1C100M	ELECTRO	10UF	16WV
C346			CK45FB1E223Z	CERAMIC	0.022UF	Z
C350, 351			CK45FB1H104Z	CERAMIC	0.10UF	Z
C352, 353			CK45FB1H392K	CERAMIC	3900PF	K
C354, 355			CK45FB1H104Z	CERAMIC	0.10UF	Z
C356			CE04KW1C100M	ELECTRO	10UF	16WV
C601			C91-1525-08	CERAMIC	0.1UF	Z
C603			C90-3824-08	ELECTRO	4700UF	5.5WV
C604			CK45FB1E223Z	CERAMIC	0.022UF	Z
C605			CE04KW1A470M	ELECTRO	47UF	10WV
C606			C91-1525-08	CERAMIC	0.1UF	Z
C607			CE04KW1H2R2M	ELECTRO	2.2UF	50WV

L : Scandinavia K : USA P : Canada R : Mexico C : China I : Malaysia
Y : PX(Far East, Hawaii) T : Europe E : Europe G : Germany V : China(Shanghai)
Y : AAFES(Europe) X : Australia Q : Russia H : Korea M : Other Areas Δ indicates safety critical components.

* New Parts
 Parts without **Parts No.** are not supplied.
 Les articles non mentionnés dans le **Parts No.** ne sont pas fournis.
 Teile ohne **Parts No.** werden nicht geliefert.

9

Ref. No	Add-ress	New Parts	Parts No.	Description	Desti-nation	Re-marks
C608			CE04KW1H010M	ELECTRO 1.0UF 50WV		
C609			C91-1525-08	CERAMIC 0.1UF Z		
C610			CE04KW1H100M	ELECTRO 10UF 50WV		
C611			CK45FB1E223Z	CERAMIC 0.022UF Z		
C612, 613			CC45CH1H200J	CERAMIC 20PF J		
C615, 616			C91-0749-05	CERAMIC 220PF K		
C617			CK45FB1H101K	CERAMIC 100PF K		
C618			CE04KW1H100M	ELECTRO 10UF 50WV		
C619			C91-0749-05	CERAMIC 220PF K		
C622			CE04KW1H010M	ELECTRO 1.0UF 50WV		
C623			CE04KW1A471M	ELECTRO 470UF 10WV		
C629			CE04KW1A101M	ELECTRO 100UF 10WV		
C631			CE04KW1A330M	ELECTRO 33UF 10WV		
C634			CK45FB1E103Z	CERAMIC 0.010UF Z		
C635, 636			C91-1525-08	CERAMIC 0.1UF Z		
CN10		*	E40-8370-08	FLAT CABLE CN(1.25)(DISPLAY)		
CN302			E40-8351-08	PIN ASSY(6P)(MIC UNIT)		
CN401		*	E40-8369-08	PIN ASSY 19P(DISPLAY UNIT)		
CN403			E40-9861-08	PIN ASSY(8P)(MIC UNIT)		
CN405			E40-8335-08	PIN ASSY(4P)(MIC UNIT)		
JK301, 302			E11-0387-08	JACK(MIC)		
L301		*	L39-1377-08	P. COIL		
L601			L33-0521-08	CHOKE COIL,4327471150		
X601			L77-2244-08	CRYSTAL		
VR601			R31-0100-08	POTENTIOMETER,ECHO		
VR602			R31-0099-08	POTENTIOMETER,MIC,5020114297		
VR603			T99-0616-08	ENCODER,VOLUME		
S601-617			S70-0036-08	TACT SWITCH		
S618-626			S70-0036-08	TACT SWITCH		
D601			1SS133T-77	DIODE		
D602			1N4148	DIODE		
D603, 604			1SS133T-77	DIODE		
D614-617			1SS133T-77	DIODE		
IC301			TA2011S	IC		
IC302		*	M65850P	IC		
IC303			BA3837	IC		
IC304			NJM78L05A	IC(VOLTAGE REGULATOR/ +5V)		
IC601		*	LC867224A-5H95	IC		
Q301-303			2SC945	TRANSISTOR		
Q304, 305			2SA733	TRANSISTOR		
Q306, 307			2SC2878A	TRANSISTOR		
Q308			DTC114TS	TRANSISTOR		
Q601, 602			2SC945	TRANSISTOR		
Q603, 604			2SA733	TRANSISTOR		
Q605			DTA124ES	TRANSISTOR		
RM601			W02-2680-08	REMOTE RECEIVER		
SPEAKER (LS-N313)						
-		*	H50-3000-08	ITEM CARTON CASE		
-			T03-0505-08	TWEETER UNIT(MULTIPLE)		
-			T10-1006-08	WOOFER UNIT		
-		*	W03-5843-05	SPEAKER		

L : Scandinavia K : USA P : Canada R : Mexico C : China I : Malaysia
 Y : PX(Far East, Hawaii) T : Europe E : Europe G : Germany V : China(Shanghai)
 Y : AAFES(Europe) X : Australia Q : Russia H : Korea M : Other Areas ▲ indicates safety critical components.

PARTS LIST

RXD-V313

RXD-V313

SPECIFICATIONS

Main unit

[Amplifier section]

Effective output power during STEREO operation
1 kHz, 10 % T.H.D., 6 Ω 60 W + 60 W

Input sensitivity / impedance

AUX 300 mV / 40 k Ω
MIC 1, 2 2.5 mV / 2.2 k Ω

Output level / impedance

AUX 200mV / 2.2 k Ω

[Tuner section]

FM tuner section

Tuning frequency range 87.5 MHz ~ 108 MHz

AM Tuner section

Tuning frequency range

9 kHz step 531 kHz ~ 1,602 kHz
10 kHz step 530 kHz ~ 1,610 kHz

[Cassette deck section]

Track 4-track, 2-channel stereo
Recording system AC bias system
(Frequency: 105 kHz)

Heads

A deck Playback / recording head 1
Erasing head 1
B deck Playback head 1

Motor 1
Fast winding time Approx. 100 seconds
(C-60 tape)

[VIDEO CD player section]

Laser Semiconductor laser
Wow & Flutter Less than unmeasurable Limit
Video output format NTSC/PAL
Composit video output level 1 Vp-p
(75 Ω , negative sync)
Compression format MPEG1

[General]

Power consumption 180 W
Dimensions W: 280 mm (11")
H: 320 mm (12-5/8")
D: 405 mm (15-15/16")
Weight (net) 9.1kg (20.1 lb)

Speakers (LS-N313)

Enclosure Bass-reflex type
Speaker configuration
Woofer 160 mm, cone type
Tweeter 50 mm, cone type
Impedance 6 Ω
Maximum input level 60 W
Dimensions W: 220 mm (8-11/16")
H: 320 mm (12-5/8")
D: 295 mm (11-5/8")
Weight (net) 3.7 kg (8.2 lb) (1 piece)



1. KENWOOD follows a policy of continuous advancements in development. For this reason specifications may be changed without notice.
2. Sufficient performance may not be possible at very low temperatures (0°C or less).

Note:

Component and circuit are subject to modification to insure best operation under differing local conditions. This manual is based on Europe (E) standard, and provides information on regional circuit modification through use of alternate schematic diagrams, and information on regional component variations through use of parts list.

KENWOOD CORPORATION

14-6, Dogenzaka 1-chome, Shibuya-ku, Tokyo, 150-8501 Japan

KENWOOD SERVICE CORPORATION

P.O. BOX 22745, 2201 East Dominguez St., Long Beach, CA 90801-5745, U.S.A.

KENWOOD ELECTRONICS CANADA INC.

6070 Kestrel Road, Mississauga, Ontario, Canada L5T 1S8

KENWOOD ELECTRONICS LATIN AMERICA S.A.

P.O. BOX 55-2791, Piso 6 plaza Chase, Cl. 47 y Aquilino de la Guardia Panama, Republic of Panama

KENWOOD ELECTRONICS BRASIL LTDA.

Av Indianópolis, 628, 04062-001 Planalto Paullista São Paulo-SP-Brasil

KENWOOD ELECTRONICS U.K. LIMITED

KENWOOD House, Dwight Road, Watford, Herts., WD1 8EB., United Kingdom

KENWOOD ELECTRONICS BELGUM N.V.

Meachelsesteenweg 418, B-1930 Zaventem, Belgium

KENWOOD ELECTRONICS DEUTSCHLAND GMBH

Rembrücker Str. 15, 63150 Heusenstamm, Germany

KENWOOD ELECTRONICS FRANCE S.A.

13 Boulevard Ney, 75018 Paris, France

KENWOOD ELECTRONICS ITALIA S.p.A.

Via G. Sirtori, 7/9 20129, Milano, Italy

KENWOOD IBÉRICA S.A.

Bolivia, 239-08020 Barcelona, Spain

KENWOOD ELECTRONICS AUSTRALIA PTY. LTD.

(A.C.N. 001499 074)

P.O. Box 504, 8 Figtree Drive, Australia Centre, Homebush, N.S.W. 2140, Australia

KENWOOD & LEE ELECTRONICS, LTD.

Unit 3712-3724, Level 37, Tower 1, Metroplaza, 223 Hing Fong Road, Kwai Fong N.T., Hong Kong

KENWOOD ELECTRONICS GULF FZE

P.O.Box 61318, Jebel Ali, Dubai, U.A.E.

KENWOOD ELECTRONICS SINGAPORE PTE LTD.

No. 1 Genting Lane #02-02, KENWOOD Building, Singapore, 349544

KENWOOD ELECTRONICS (MALAYSIA) SDN BHD.

#4.01 Level 4, Wisma Academy Lot 4A, Jalan 19/1 46300 Petaling Jaya Selangor Darul Ehsan Malaysia

KENWOOD ELECTRONICS (THAILAND) CO., LTD.

573/111 Soi Ramkhamhaeng 39, Ramkhamhaeng Road, Wangthonglang, Bangkok, Bangkok 10301 Thailand