

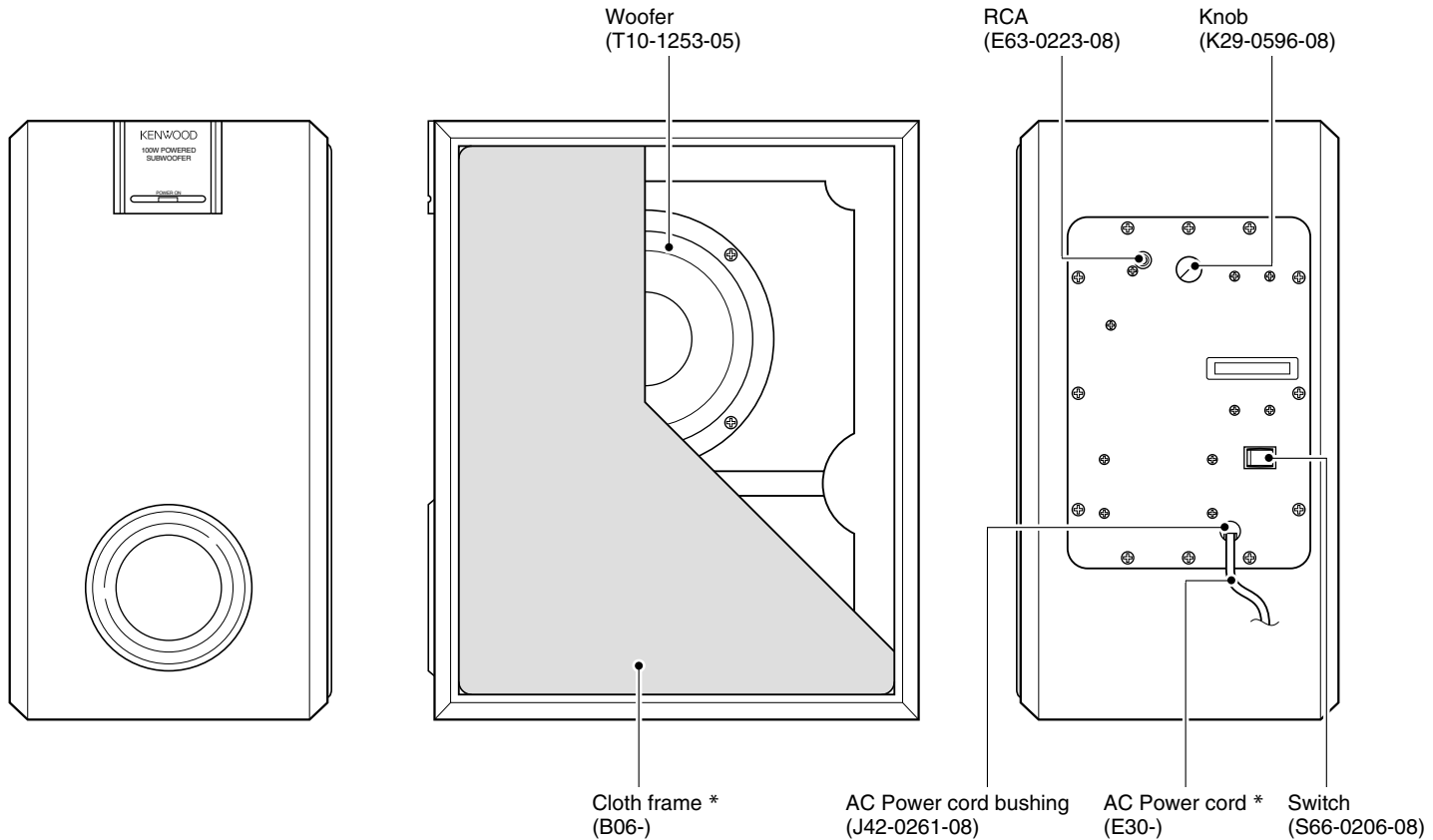
POWERED SUBWOOFER

# SW-38HT/-38HT-B

## SERVICE MANUAL

# KENWOOD

© 2004-6 PRINTED IN KOREA  
B51-5905-00 (K/K) 876



## SPECIFICATIONS

Type ..... Subwoofer system with built-in amplifier

### [Amplifier]

Dynamic Power ..... 100 W (6Ω)

(For U.S.A. and Canada)

Rated Output Power (FTC)

75 W RMS, at 6 Ω 100 Hz, with no more than 0.7 % T.H.D.

Input Sensitivity & Input Impedance ..... 300 mV (37 kΩ)

Rated Power Consumption ..... 70 W

Frequency Responce..... 35 Hz ~ 200 Hz

(For other countries)

Rated Output Power ..... 75 W RMS (100 Hz, 6 Ω)

Input Sensitivity & Input Impedance ..... 300 mV (37 kΩ)

Rated Power Consumption ..... 70 W

Frequency Responce..... 35 Hz ~ 200 Hz

### [Speaker]

Enclosure ..... Bass-Reflex, Floor Standing Type

Speaker Units ..... 160 mm (6-1/2") Cone type

Nominal Impedance ..... 6 Ω

### Dimensions

Width ..... : 210 mm (8-1/4")

Height ..... : 400 mm (15-3/4")

Depth ..... : 350 mm (13-3/4")

Net Weight ..... 9.2 kg (20.3 lb)

### Supplied accessories

Pin-plug cord ..... 1

**NOTE: THE GRILLE CANNOT BE REMOVED**

### Notes:

- Kenwood follows a policy of continuous advancements in development. For this reason, specifications may be changed without notice.
- Full performance may not be exhibited in extremely cold locations (below 0 deg. C).

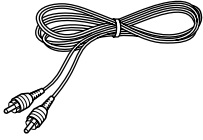


# SW-38HT

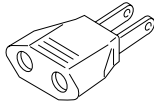
## ACCESSORIES

### Accessories

Pin-plug cord (1)  
(E30-7068-05)



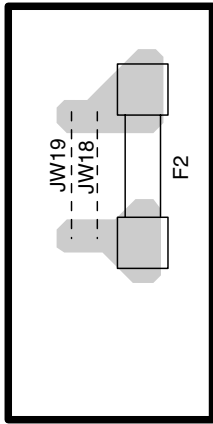
AC plug adapter(1)  
(E03-0260-05)



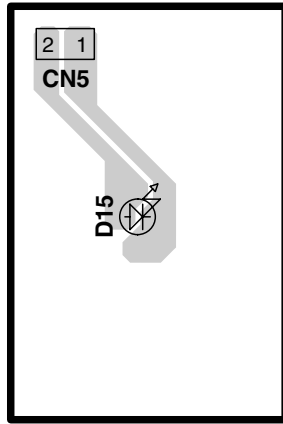
### How to Replace Woofer

Cut the cloth of cloth frame ass'y and replace it with new one after mount the speaker.

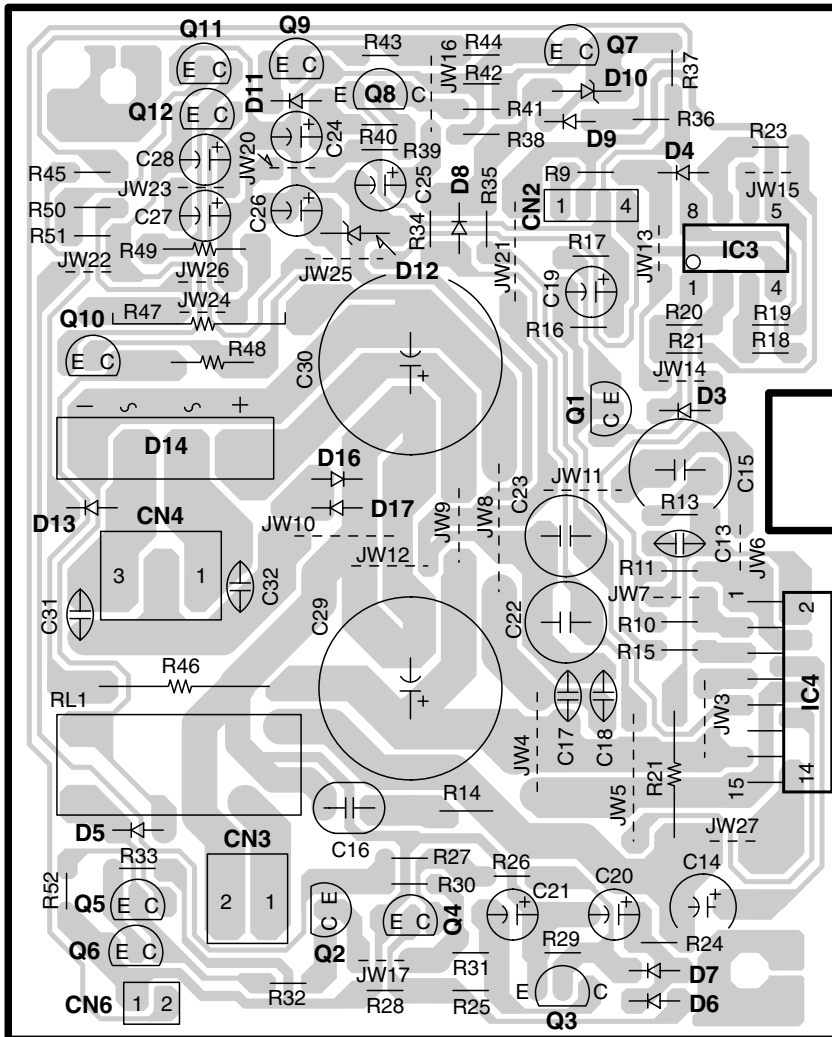
# PC BOARD (Component side view)



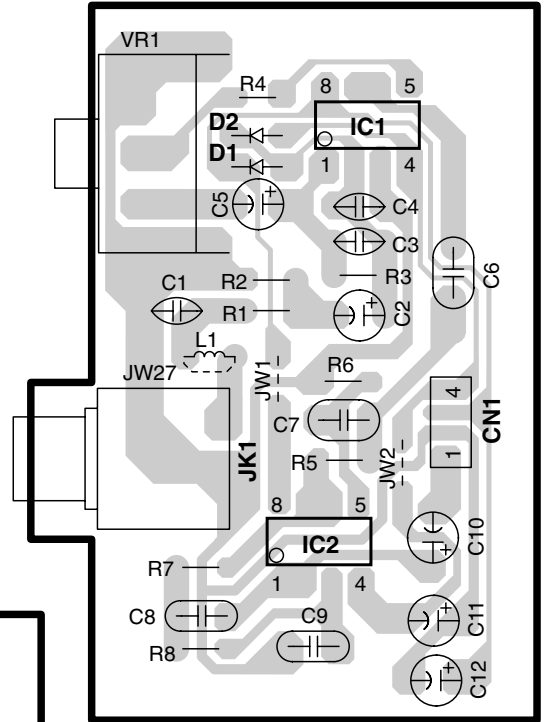
## LED



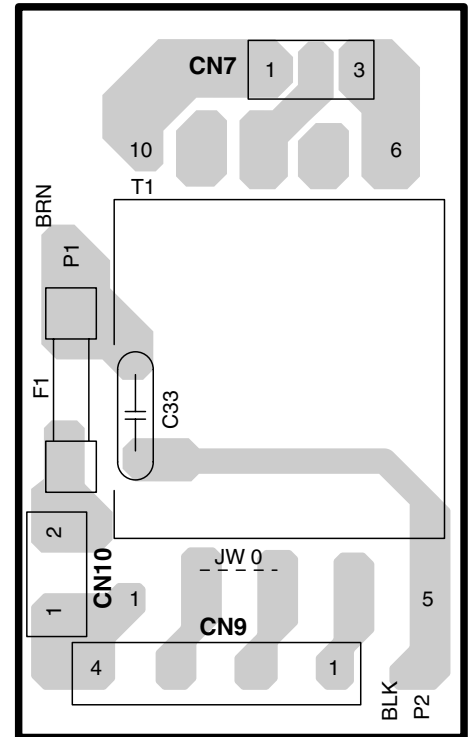
## MAIN



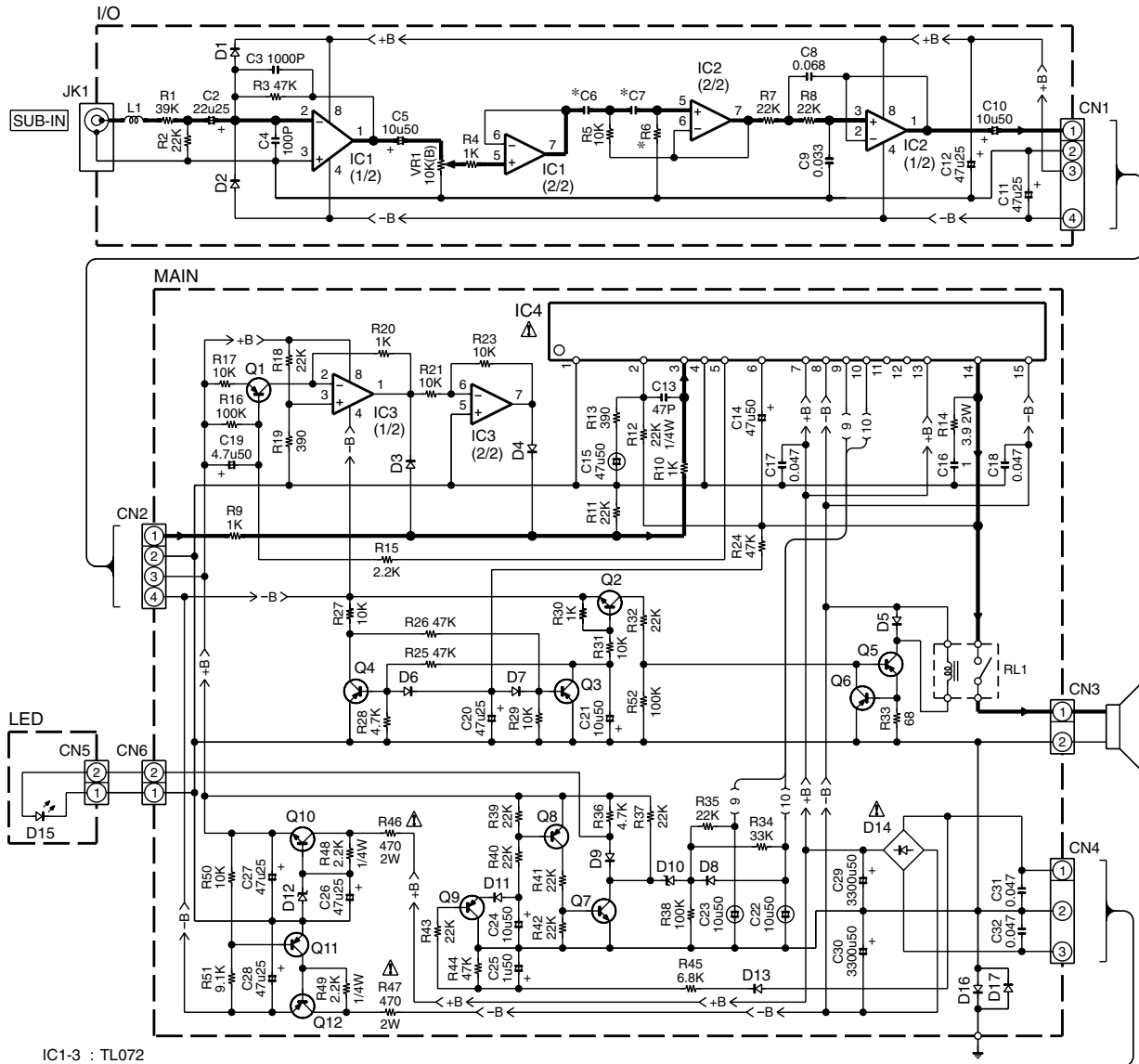
## I/O



## POWER SUPPLY



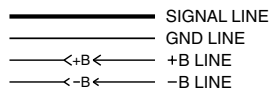
# SW-38HT



IC1-3 : TL072  
IC4 : TDA7293V

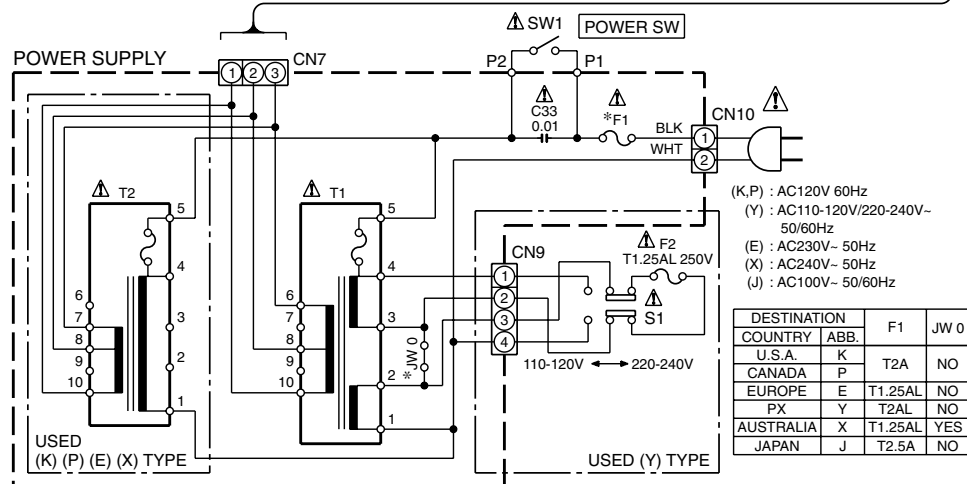
Q1,3,4,6,8,9,11 : 2N3906  
Q2,7 : 2N3904  
Q5 : 2N5401  
Q10 : MPSW06  
Q12 : MPSW56

D1-9,11,13,16,17 : 1N4148  
D10 : 1N5240B  
D12 : 1N5246B  
D14 : KBU4D



## SW-38HT

	K,P	EXYJ
C6,7	0.068	0.68
R6	270K	18K



(K,P) : AC120V 60Hz  
(Y) : AC110-120V/220-240V-50/60Hz  
(E) : AC230V-50Hz  
(X) : AC240V-50Hz  
(J) : AC100V-50/60Hz

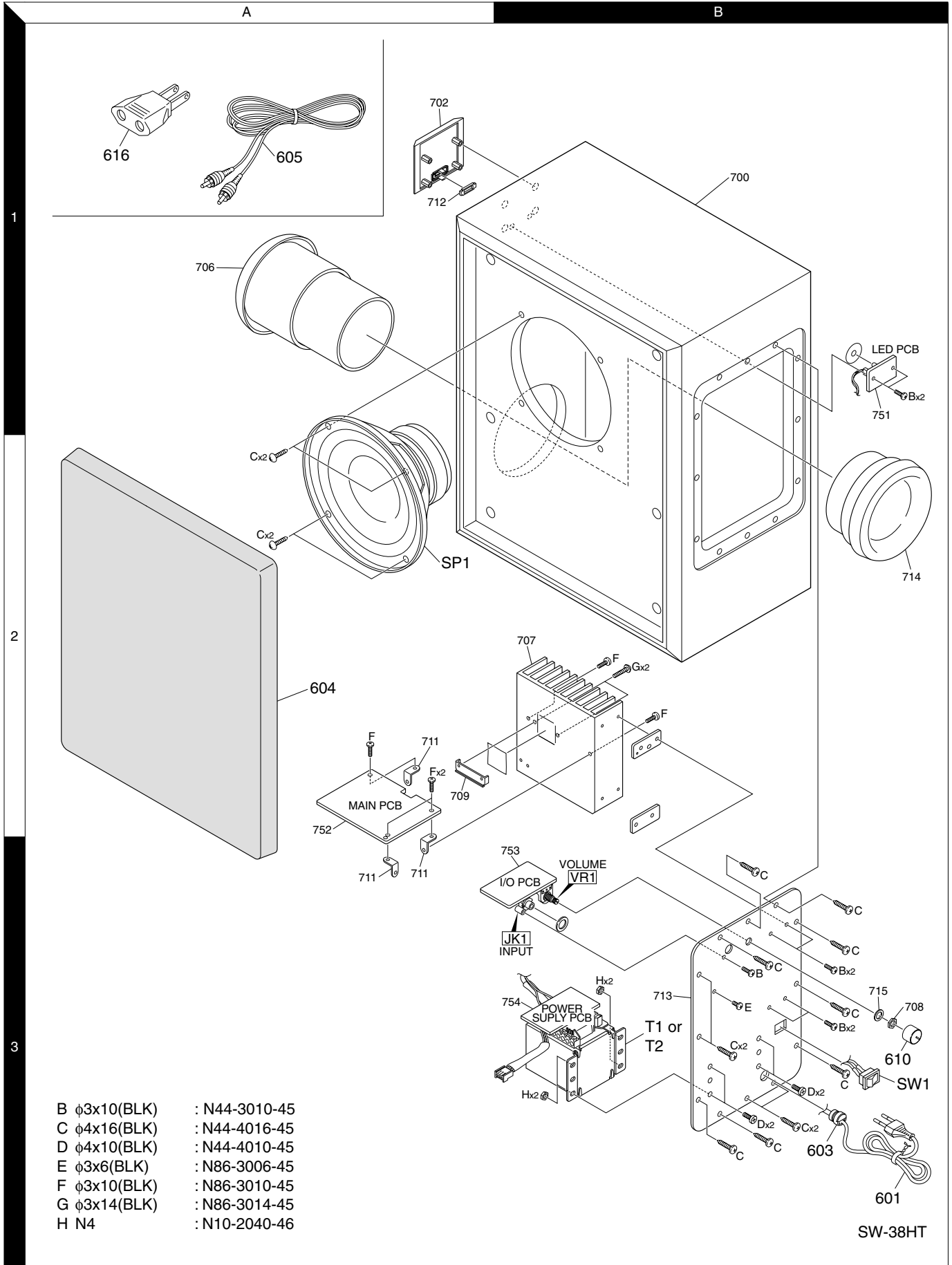
DESTINATION	COUNTRY	ABB.	F1	JW 0
U.S.A.	K		T2A	NO
CANADA	P			
EUROPE	E	T1,25AL		NO
PX	Y	T2AL		NO
AUSTRALIA	X	T1,25AL		YES
JAPAN	J	T2.5A		NO

SW-38HT

**CAUTION:** For continued safety, replace safety critical components only with manufacturer's recommended parts (refer to parts list).  $\Delta$  indicates safety critical components. For continued protection against risk of fire, replace only with same type and rating fuse(s). To reduce the risk of electric shock, leakage-current or resistance measurements shall be carried out (exposed parts are acceptably insulated from the supply circuit) before the appliance is returned to the customer.

The DC voltage is an actual reading measured with a high impedance type voltmeter with no signal input. The measurement value may vary depending on the measuring instruments used or on the product.

## EXPLODED VIEW



Parts with exploded numbers larger than 700 are not supplied.

\* New Parts  
 Parts without **Parts No.** are not supplied.  
 Les articles non mentionnés dans le **Parts No.** ne sont pas fournis.  
 Teile ohne **Parts No.** werden nicht geliefert.

1

Ref. No	Add-ress	New Parts	Parts No.	Description	Desti-nation	Re-marks
<b>SW-38HT Y=YS+YB, YS=SW-38HT, YB=SW-38HT-B</b>						
-		*	B61-1221-00	INSTRUCTION MAN640-SW38HT-00	KPEX	
-		*	B61-1227-00	INSTRUCTION MAN640-SW38HY-00	Y	
-		*	H10-8443-08	POLYFOAM TOP SW720-TSW38T-00		
-		*	H10-8444-08	POLYFOAM BTM SW720-BSW38T-00		
-		*	H51-2069-08	CARTON SW38HT K730-0SW38H-10	KPEX	
-		*	H51-2070-09	CARTON SW38HT K730-0S38HY-10	YS	
-		*	H51-2071-09	CARTON SW38HT K730-0SW38BY-10	YB	
Δ 601	3B	*	E30-7084-05	AC POWER CORD (316-KP3555-01	K	
Δ 601	3B	*	E30-7085-05	AC CORD 2M EU 316-0E3555-00	E	
Δ 601	3B	*	E30-7086-05	AC CORD 2M 115/316-0M3555-00	Y	
Δ 601	3B	*	E30-7087-05	AC CORD 2M AS 316-0X3555-00	X	
Δ 603	3B	*	J42-0261-08	BUSHING 5RF-4 P408-005RF4-00		
604	2A	*	B06-1790-08	CLOTH FRAME ASSK201-SW380HT-10	KPEXYS	
604	2A	*	B06-1802-08	CLOTH FRAME ASSK201-SW380HB-10	YB	
605	1A	*	E30-7068-05	CORD RCA PIN SL394-0SL307-00		
610	3B	*	K29-0596-08	KNOB SW38HT K218-SW3801B-00		
Δ 616	1A	*	E03-0260-05	AC PLUG ADAPTER344-0JT475-00	Y	
SP1	2A	*	T10-1253-05	WOOFER SW-38HT 300-K038HT1600		
Δ SW1	3B	*	S66-0206-08	SW1/ROCKER/OR-L327-0RL17DDB2		
<b>AMP</b>						
D15		*	B30-1848-08	LED L-7113CGCK 335-151102-00		
C2			CE04KW1E220M	ELECTRO 22UF 25WV		
C3			CK45FB1H102K	CERAMIC 1000PF K		
C4			CK45FB1H101K	CERAMIC 100PF K		
C5			CE04KW1H100M	ELECTRO 10UF 50WV		
C6,7			CK45FB1H684K	CERAMIC 0.68UF K	EXY	
C6,7			CK45FB1H683K	CERAMIC 0.068UF K	KP	
C8			CK45FB1H683K	CERAMIC 0.068UF K		
C9			CK45FB1H333K	CERAMIC 0.033UF K		
C10			CE04KW1H100M	ELECTRO 10UF 50WV		
C11,12			CE04KW1E470M	ELECTRO 47UF 25WV		
C13			CC45FCH1H470J	CERAMIC 47PF J		
C14			CE04KW1H470M	ELECTRO 47UF 50WV		
C15			CE04BP1H470M	NP-ELEC 47UF 50WV		
C16		*	C91-0217-05	M.POLYESTER 357-11051JJ13		
C17,18			CK45FB1H473K	CERAMIC 0.047UF K		
C19			CE04KW1H4R7M	ELECTRO 4.7UF 50WV		
C20			CE04KW1E470M	ELECTRO 47UF 25WV		
C21			CE04KW1H100M	ELECTRO 10UF 50WV		
C22,23			CE04BP1H100M	NP-ELEC 10UF 50WV		
C24			CE04KW1H100M	ELECTRO 10UF 50WV		
C25			CE04KW1H010M	ELECTRO 1.0UF 50WV		
C26-28			CE04KW1E470M	ELECTRO 47UF 25WV		
C29,30			CE04KW1H332M	ELECTRO 3300UF 50WV		
C31,32			CK45FB2A473M	CERAMIC 0.047UF M		
Δ C33		*	C90-6583-05	CAP MP/10n/250V357-51032FM03		
JK1		*	E63-0223-08	RCA/1P/RJ-1081-399-RRJ10810103		
Δ F1		*	F50-0250-05	FUSE 250/2A 51M365-312200102	KP	
Δ F1		*	F50-0230-05	FUSE 250V/2A 50365-312200101	Y	
Δ F1		*	F50-0228-05	FUSE 250V/1.25A365-312125101	EX	
Δ F2		*	F50-0228-05	FUSE 250V/1.25A365-312125101	Y	

L : Scandinavia K : USA P : Canada R : Mexico C : China I : Malaysia  
 Y : PX(Far East,Hawaii) T : England E : Europe G : Germany V : China(Shanghai)  
 Y : AAFES(Europe) X : Australia Q : Russia H : Korea M : Other Areas Δ indicates safety critical components .

\* New Parts  
 Parts without **Parts No.** are not supplied.  
 Les articles non mentionnés dans le **Parts No.** ne sont pas fournis.  
 Teile ohne **Parts No.** werden nicht geliefert.

2

Ref. No	Add-ress	New Parts	Parts No.	Description	Desti-nation	Re-marks
Δ T2	3B	*	L07-3047-05	TRANSFORMER 120326-1228A17310	KP	
Δ T2	3B	*	L07-3048-05	TRANSFORMER 230326-1328A17310	E	
Δ T1/T2	3B	*	L07-3049-05	TRANSFORMER 115326-1528A17310	Y/X	
R14			RS14GB3D3R9J	FL-PROOF RS 3.9 J 2W		
Δ R46,47			RS14GB3D471J	FL-PROOF RS 470 J 2W		
VR1		*	R31-0432-08	POT1/B10K/RV16A371-1B14RV16AE		
RL1		*	S76-0218-08	RELAY OMRON/SPS372-1G5PA1DC24		
S1		*	S62-0219-08	SWITCH VOLT VEV327-VEV1261BCT	Y	
D1-9			1N4148	DIODE IN4148 D0334-31N4148		
D10		*	1N5240B	DIODE-Z/1N5240B334-41N5240B		
D11			1N4148	DIODE IN4148 D0334-31N4148		
D12		*	1N5246B	DIODE-Z/1N5246B334-41N5246B		
D13			1N4148	DIODE IN4148 D0334-31N4148		
Δ D14		*	KBU4D	BRIDGE DIODE KB331-2KBU4D		
D16,17			1N4148	DIODE IN4148 D0334-31N4148		
IC1-3		*	TL072	IC/TL072/DIP8 331-1TL072		
Δ IC4		*	TDA7293V	IC ST TDA7293V 331-A7293V-00		
Q1			2N3906	TR 2N3906 PNP T384-62N3906		
Q2			2N3904	TR 2N3904 NPN T383-62N3904		
Q3,4			2N3906	TR 2N3906 PNP T384-62N3906		
Q5			2N5401	TR2N5401PNPT384-2N5401-00		
Q6			2N3906	TR2N3906PNPT384-62N3906		
Q7			2N3904	TR 2N3904 NPN T383-62N3904		
Q8,9			2N3906	TR 2N3906 PNP T384-62N3906		
Q10		*	MPSW06	TR/T0226/MPSW06383-9MPSW06		
Q11			2N3906	TR 2N3906 PNP T384-62N3906		
Q12		*	MPSW56	TRANS/PNP/MPSW5384-9MPSW56		

L : Scandinavia K : USA P : Canada R : Mexico C : China I : Malaysia  
 Y : PX(Far East,Hawaii) T : England E : Europe G : Germany V : China(Shanghai)  
 Y : AAFES(Europe) X : Australia Q : Russia H : Korea M : Other Areas Δ indicates safety critical components .

SW-38HT

PARTS LIST