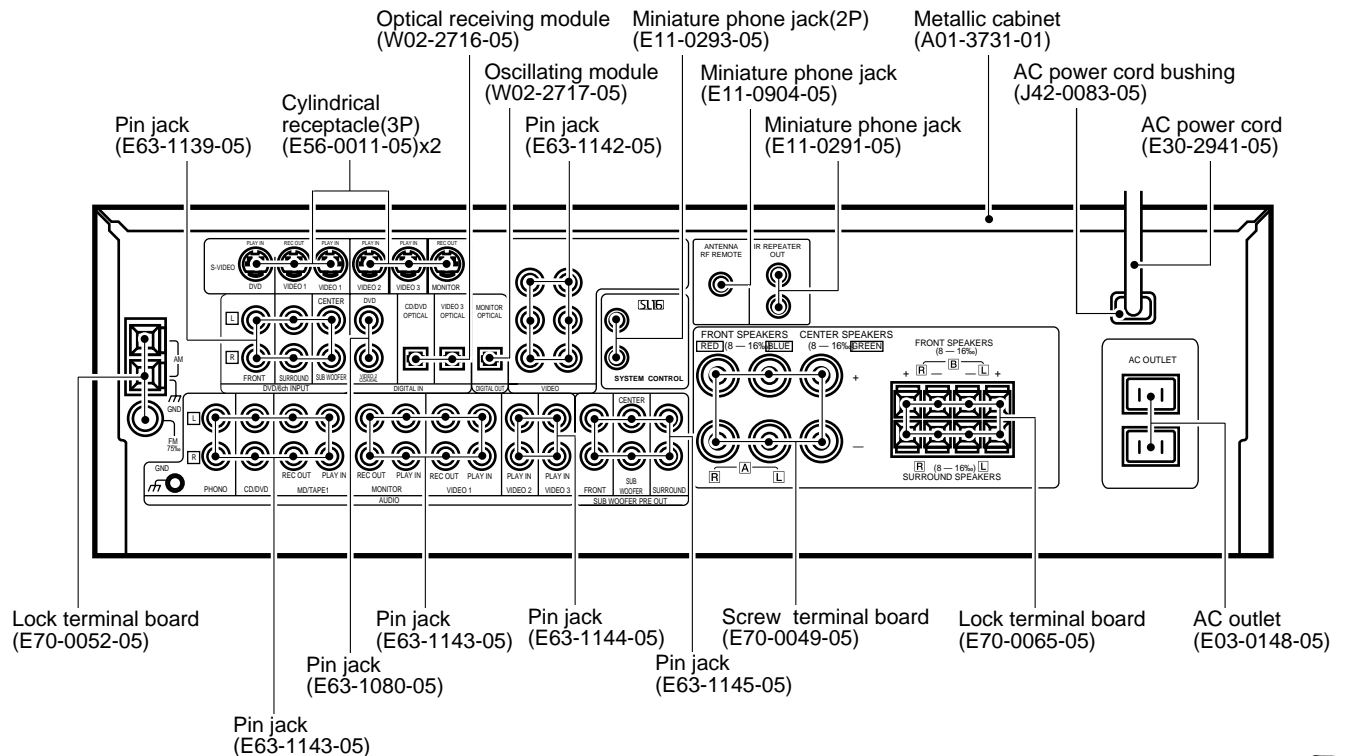
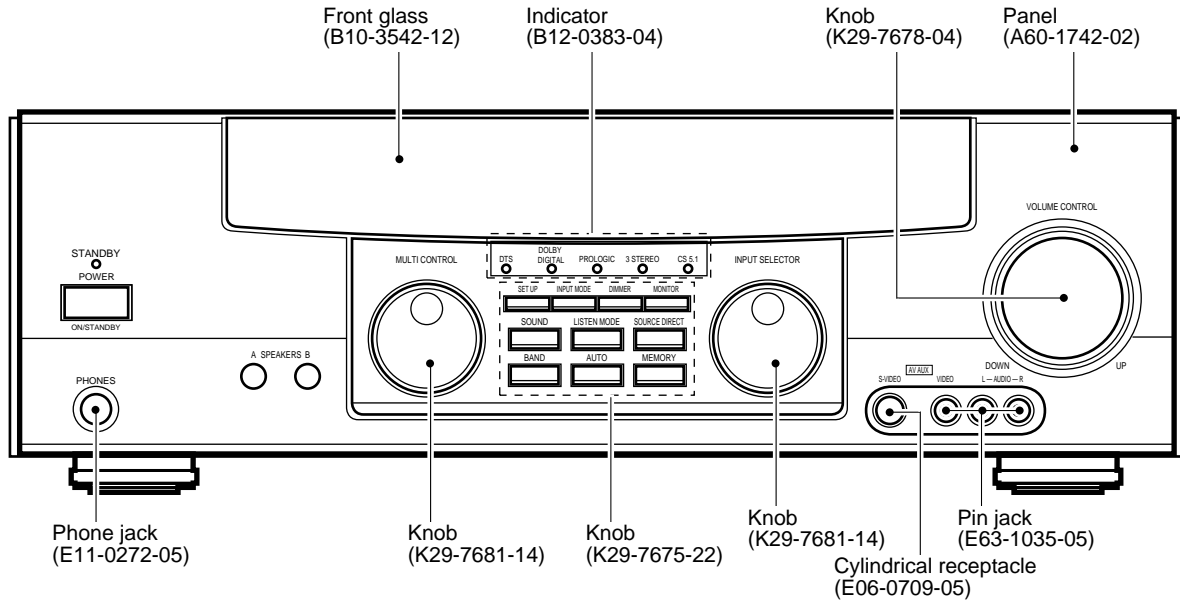


VR-410

SERVICE MANUAL

© 2000-5/B51-5617-00 (K/K) 1380



Please refer to VR-407/409 service manual (B51-5598-00) on circuit description.



VR-410

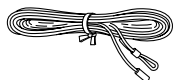
CONTENTS / ACCESSORIES / CAUTIONS

Contents

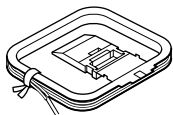
CONTENTS / ACCESSORIES / CAUTIONS.....	2	EXPLODED VIEW	27
ADJUSTMENT	3	PARTS LIST.....	28
PC BOARD	4	SPECIFICATIONS	Back cover
SCHEMATIC DIAGRAM	9		

Accessories

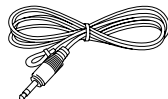
FM indoor antenna (1)
(T90-0836-05)



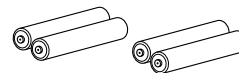
AM loop antenna (1)
(T90-0852-05)



RF remote antenna (1)
(T90-0850-05)



Batteries (R6/AA) (4)



Remote control unit (1)
(A70-1314-05): RC-R0810



Battery cover(A09-1166-08)

Cautions

Resetting the Microcomputer

If the microcomputer may malfunction (unit cannot be operated, or shows an erroneous display) if the power cord is unplugged while the power is ON, or due to some other external factor. If this happens, execute the following procedure to reset the microcomputer and return the unit to its normal operating condition.

Unplug the power cord from the wall outlet, then plug it back in while holding down the POWER key.

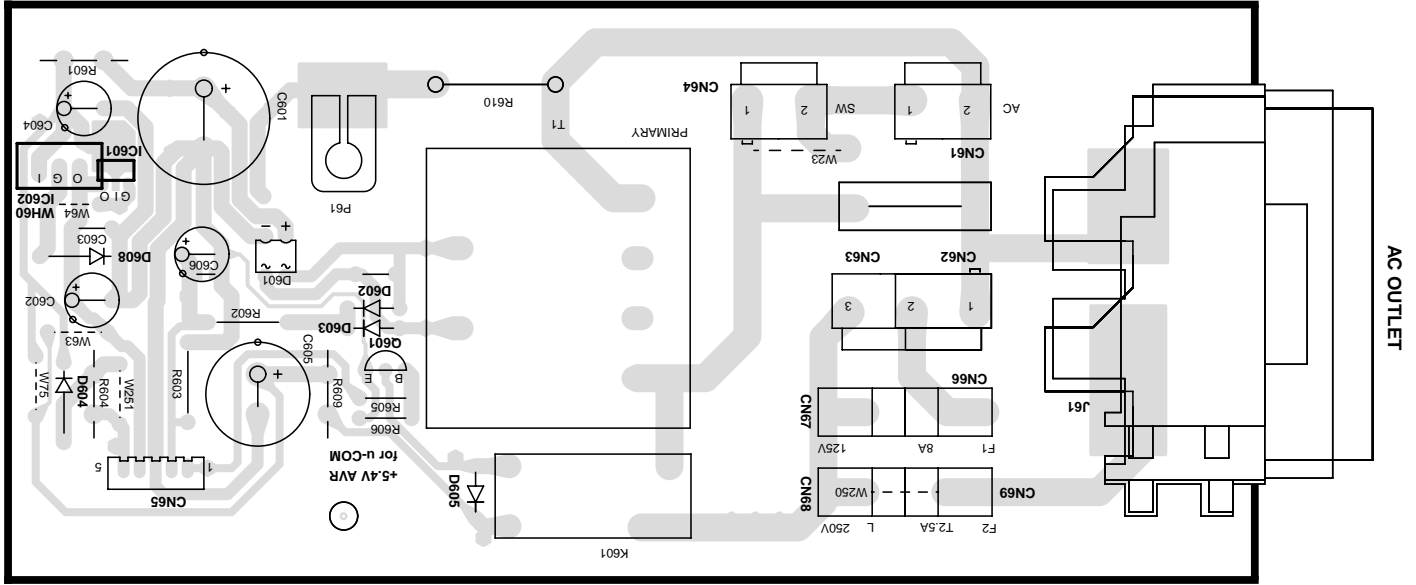
- Please note that resetting the microcomputer will clear the contents of the memory and returns the unit to the state it was in when it left the factory.

ADJUSTMENT

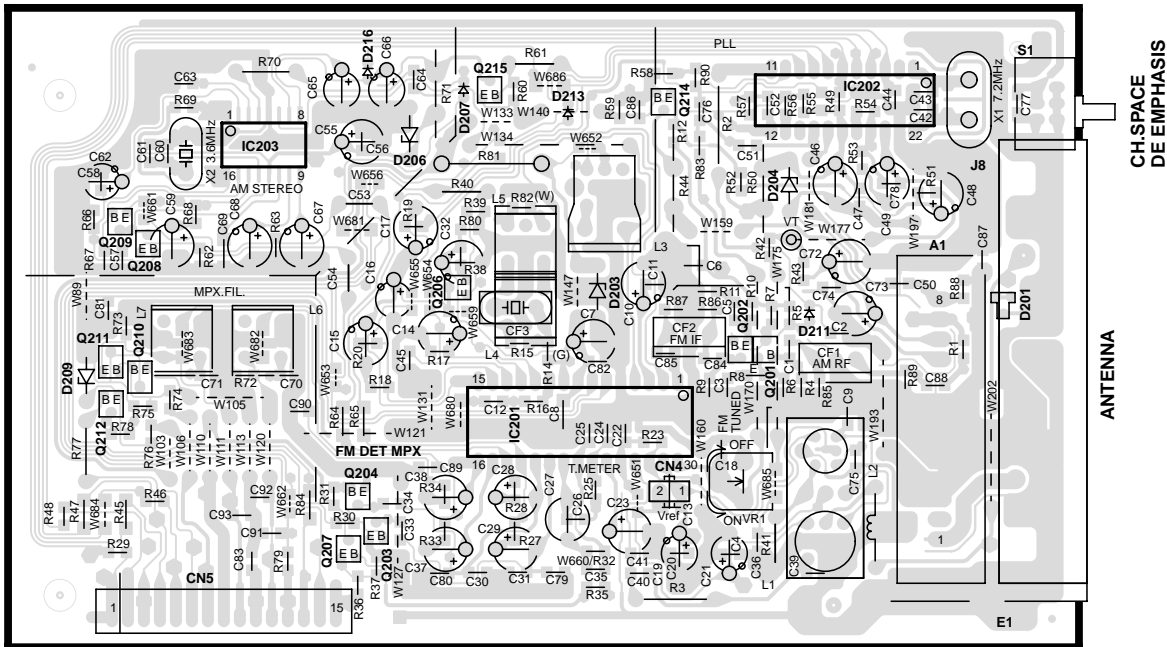
No.	ITEM	INPUT SETTINGS	OUTPUT SETTINGS	RECEIVER SETTINGS	ALIGNMENT POINTS	ALIGN FOR	FIG.
FM SECTION :		SELECTOR : FM					
1	DISCRIMINATOR (K,P only)	98.0MHz 1kHz, ±75kHz dev. 70dBf (ANT. input)	Connect a DC voltmeter between CN4 ① and CN4 ② (X07)	98.0MHz	L4 (X07)	0V	
2	TUNING LEVEL	98.0MHz MONO 1kHz, ±75kHz dev. 29.2dBf (ANT. input)	—	MONO 98.0MHz	VR1 (X07)	Adjust VR1 and stop at the point where ED1 (TUNED) goes on.	

PC BOARD (Component side view)

X07-3120-10 C/3 (J70-1362-41)

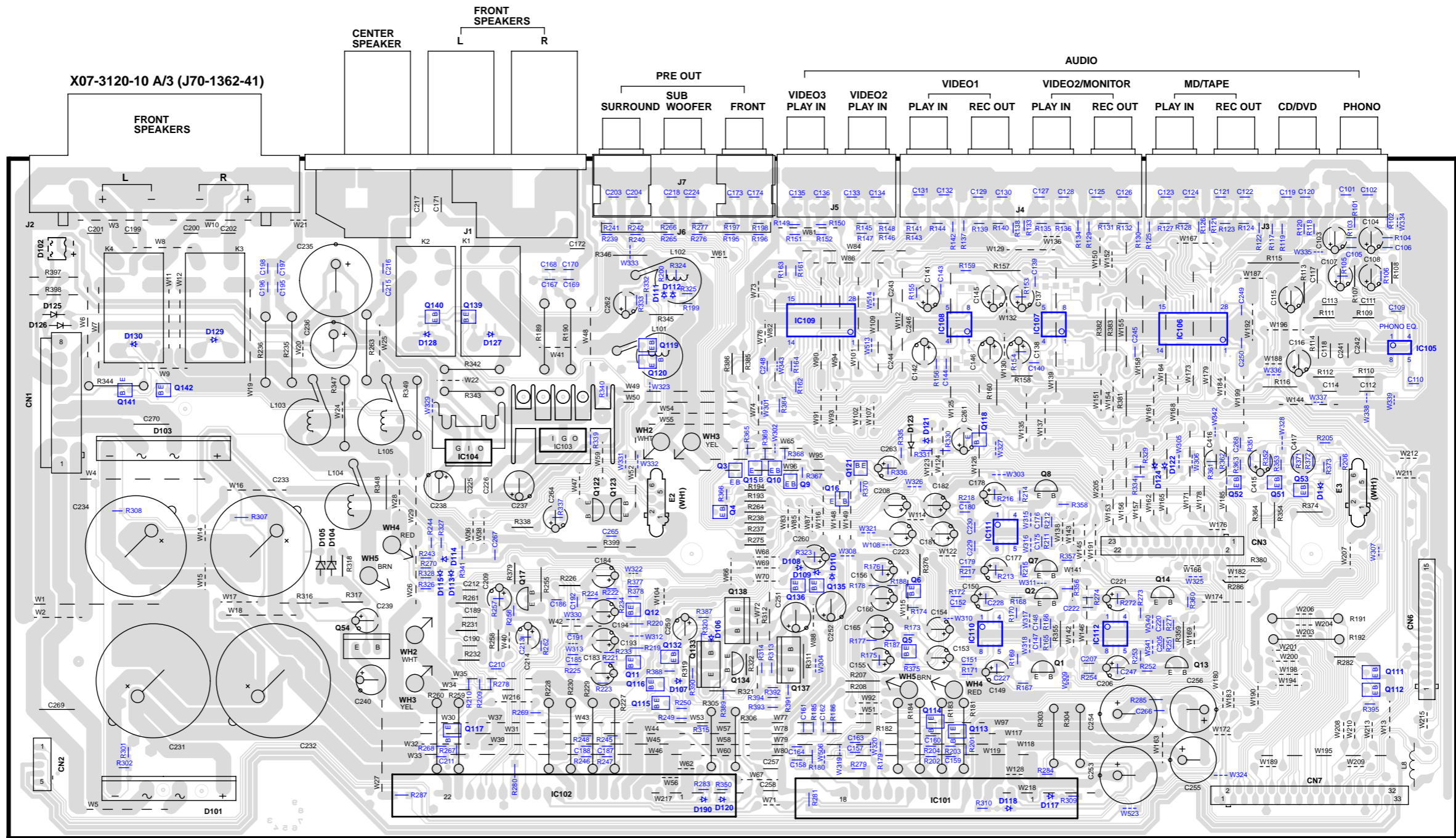


X07 B/3

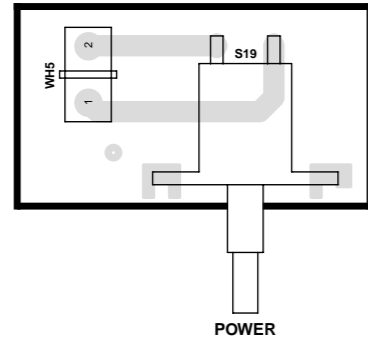


Refer to the schematic diagram for the value of resistors and capacitors.

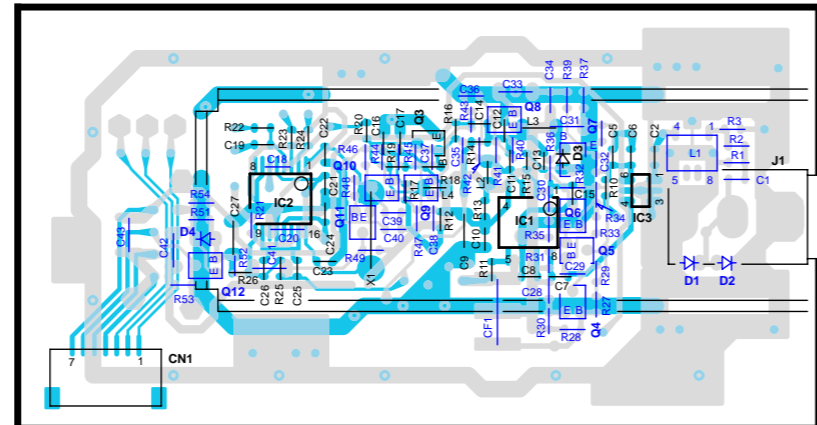
PC BOARD(Component side view)



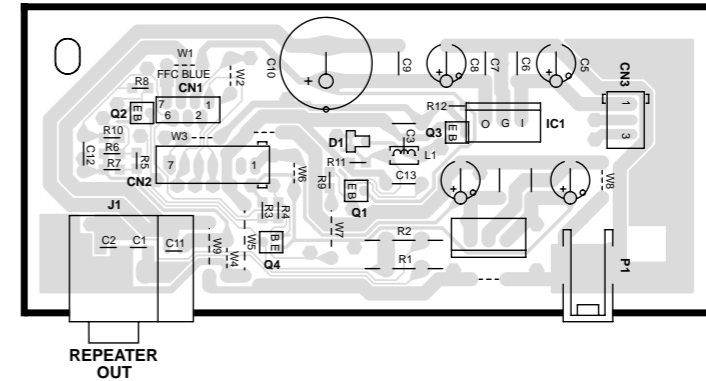
X14 F/6



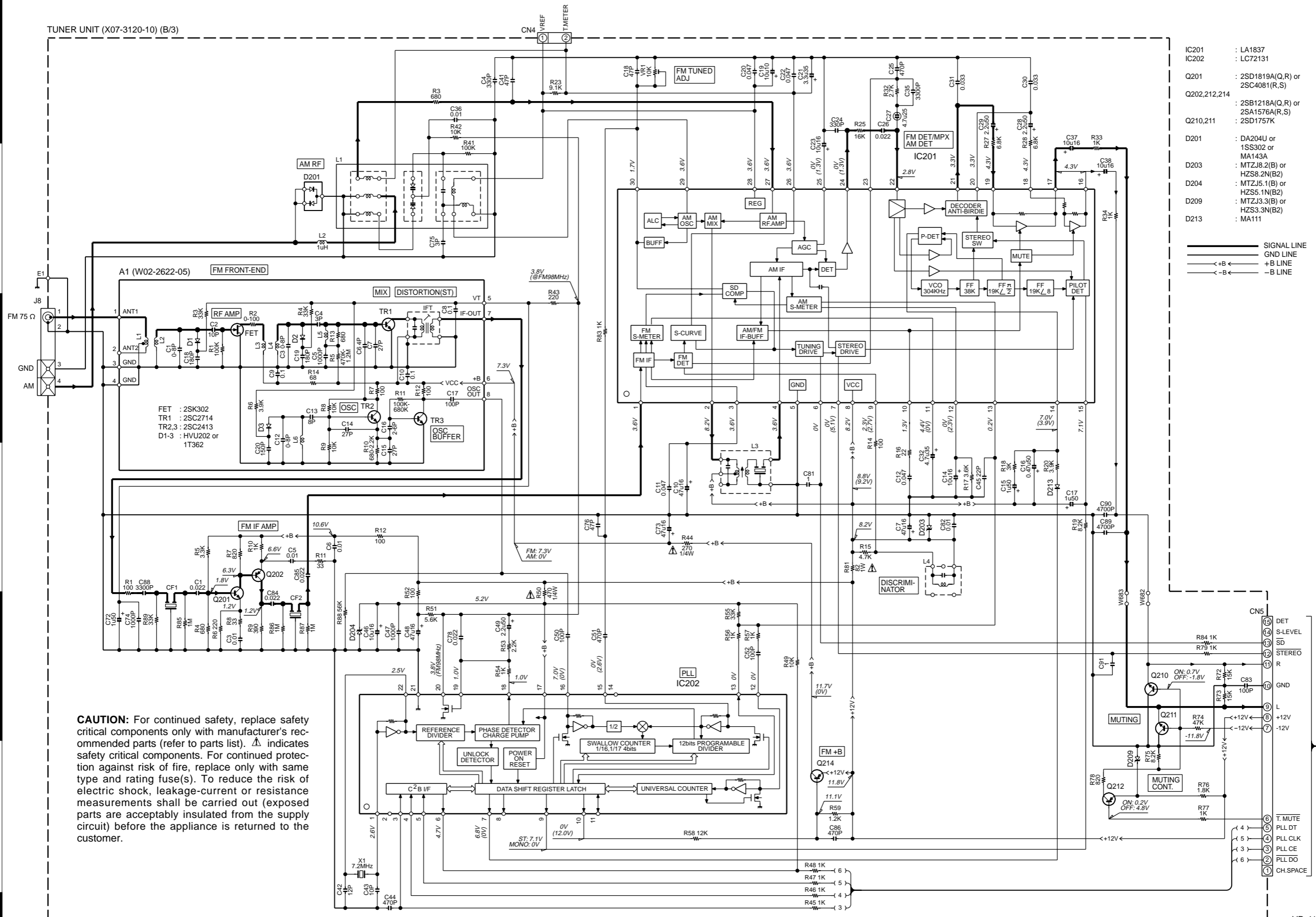
X05-5150-10 (J70-1391-22)



X13-7790-10 (J70-1451-11)



TUNER UNIT (X07-3120-10) (B/3)



- IC201 : LA1837
- IC202 : LC72131
- Q201 : 2SD1819A(Q,R) or 2SC4081(R,S)
- Q202,212,214 : 2SB1218A(Q,R) or 2SA1576A(R,S)
- Q210,211 : 2SD1757K
- D201 : DA204U or 1SS302 or MA143A
- D203 : MTZJ8.2(B) or HZS8.2N(B2)
- D204 : MTZJ5.1(B) or HZS5.1N(B2)
- D209 : MTZJ3.3(B) or HZS3.3N(B2)
- D213 : MA111

— SIGNAL LINE
 — GND LINE
 — +B LINE
 — -B LINE

CAUTION: For continued safety, replace safety critical components only with manufacturer's recommended parts (refer to parts list). ⚠ indicates safety critical components. For continued protection against risk of fire, replace only with same type and rating fuse(s). To reduce the risk of electric shock, leakage-current or resistance measurements shall be carried out (exposed parts are acceptably insulated from the supply circuit) before the appliance is returned to the customer.

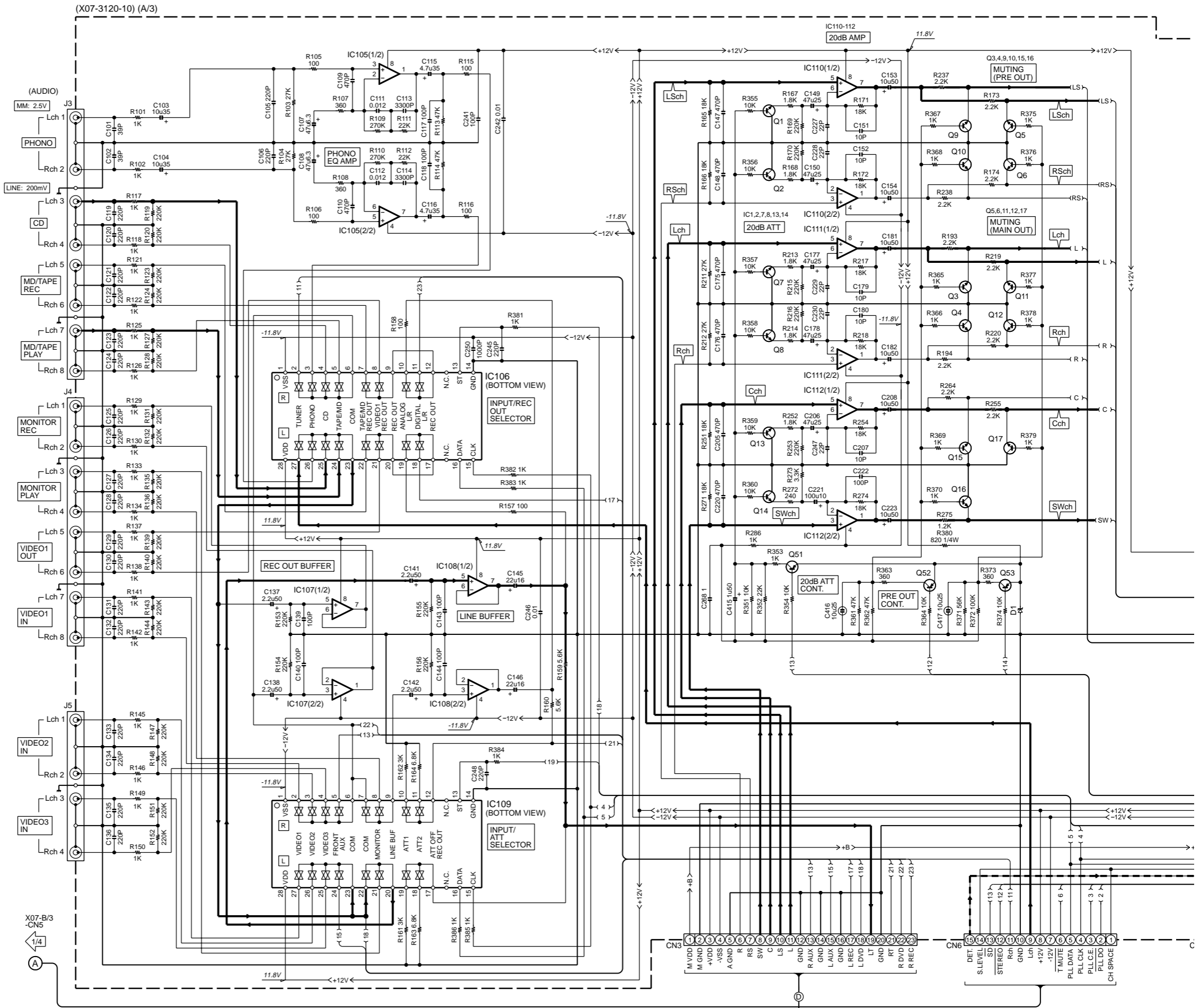
VR-410 (1/4)

The DC voltage is an actual reading measured with a high impedance type voltmeter as the AM/FM signal generator is specified to the conditions as shown in the list below. The measurement value may vary depending on the measuring instruments used or on the product. The value shown in () is actual reading measured in the AM mode.

MODE	CARRIER	MODULATION		ANT INPUT
		FREQUENCY	DEVIATION	
FM	98MHz	1kHz	STEREO 67.5kHz 7.5kHz(Pilot)	60dB
AM	1000(999)kHz	400Hz	MONO 30% MOD	60dB

Y05-3970-10

VR-410
KENWOOD



CAUTION: For continued safety, replace safety critical components only with manufacturer's recommended parts (refer to parts list). Δ indicates safety critical components. For continued protection against risk of fire, replace only with same type and rating fuse(s). To reduce the risk of electric shock, leakage-current or resistance measurements shall be carried out (exposed parts are acceptably insulated from the supply circuit) before the appliance is returned to the customer.

The DC voltage is an actual reading measured with a high impedance type voltmeter with no signal input. The measurement value may vary depending on the measuring instruments used or on the product.

DOLBY and the double-D symbol are trademarks of Dolby Laboratories Licensing Corporation. Noise reduction circuit made under license from Dolby Laboratories Licensing Corporation.

(X07-3120-10) (A/3)

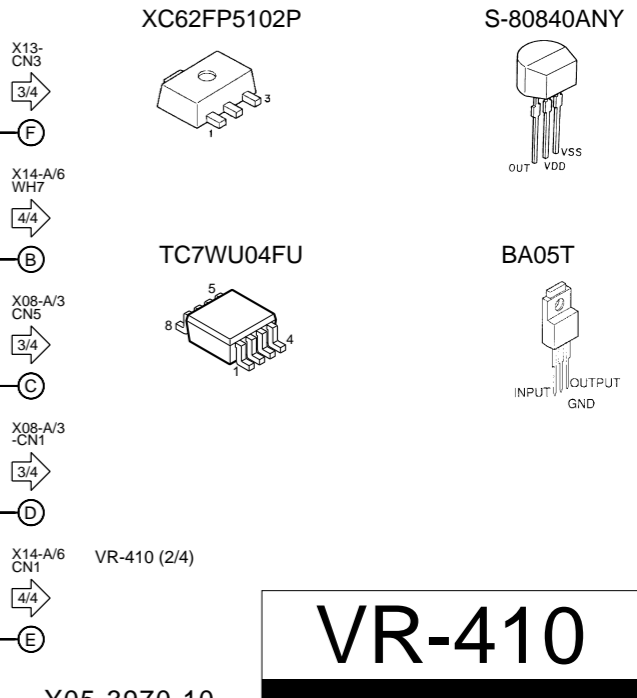
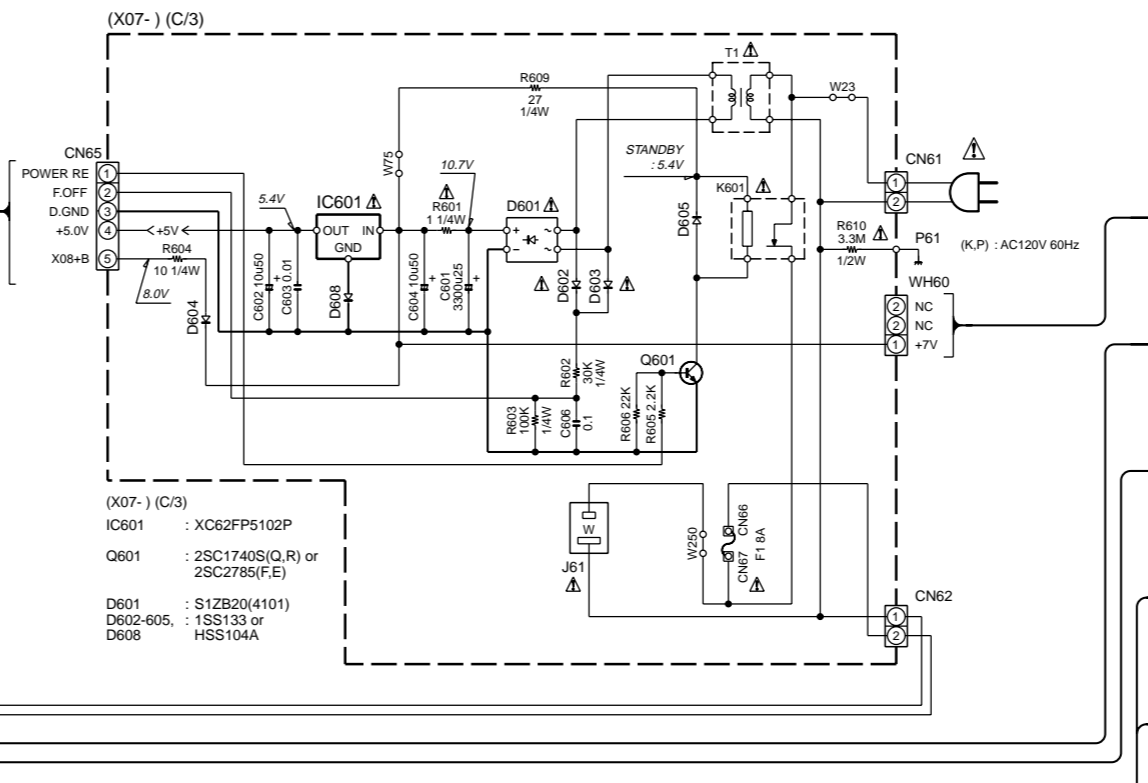
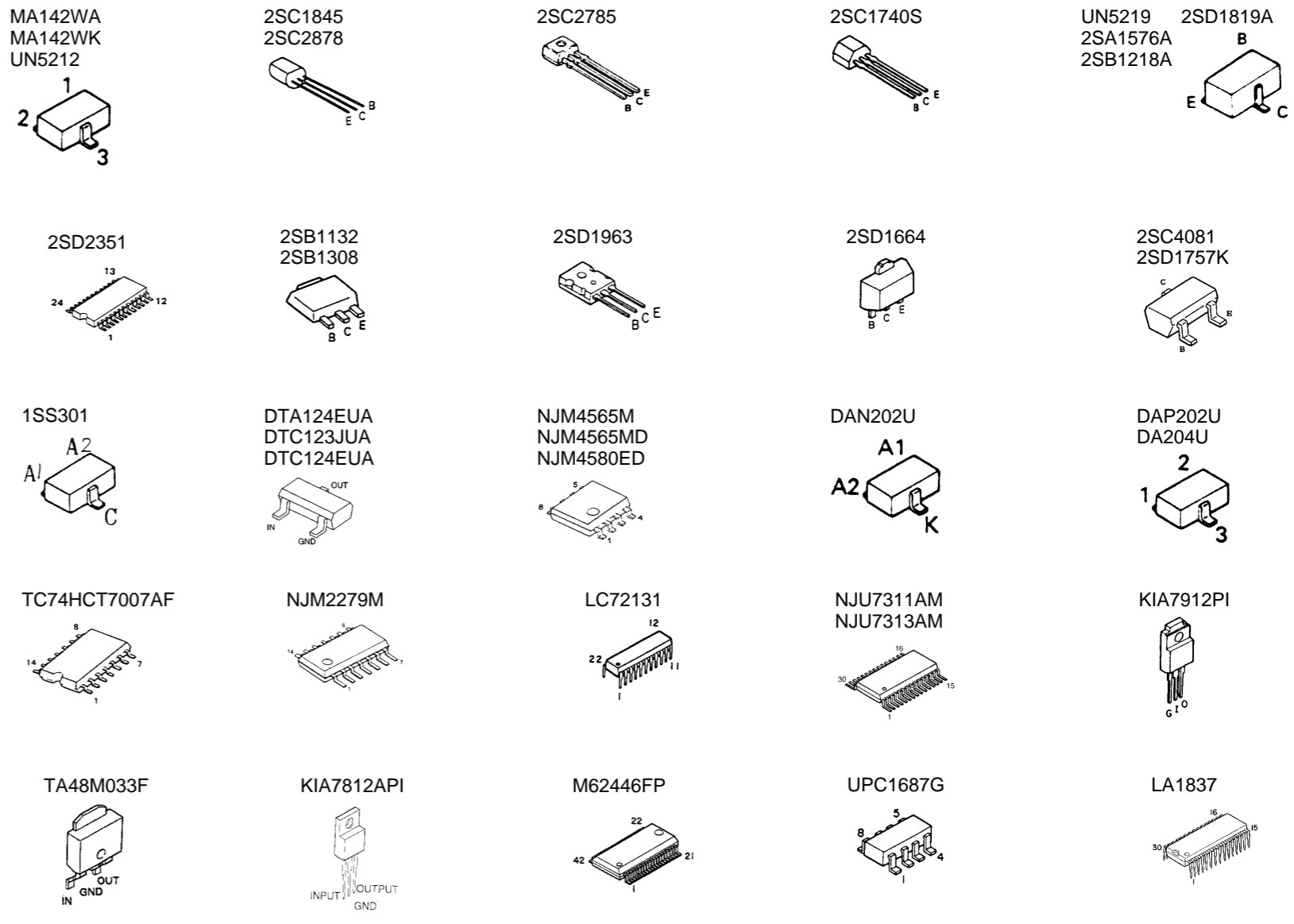
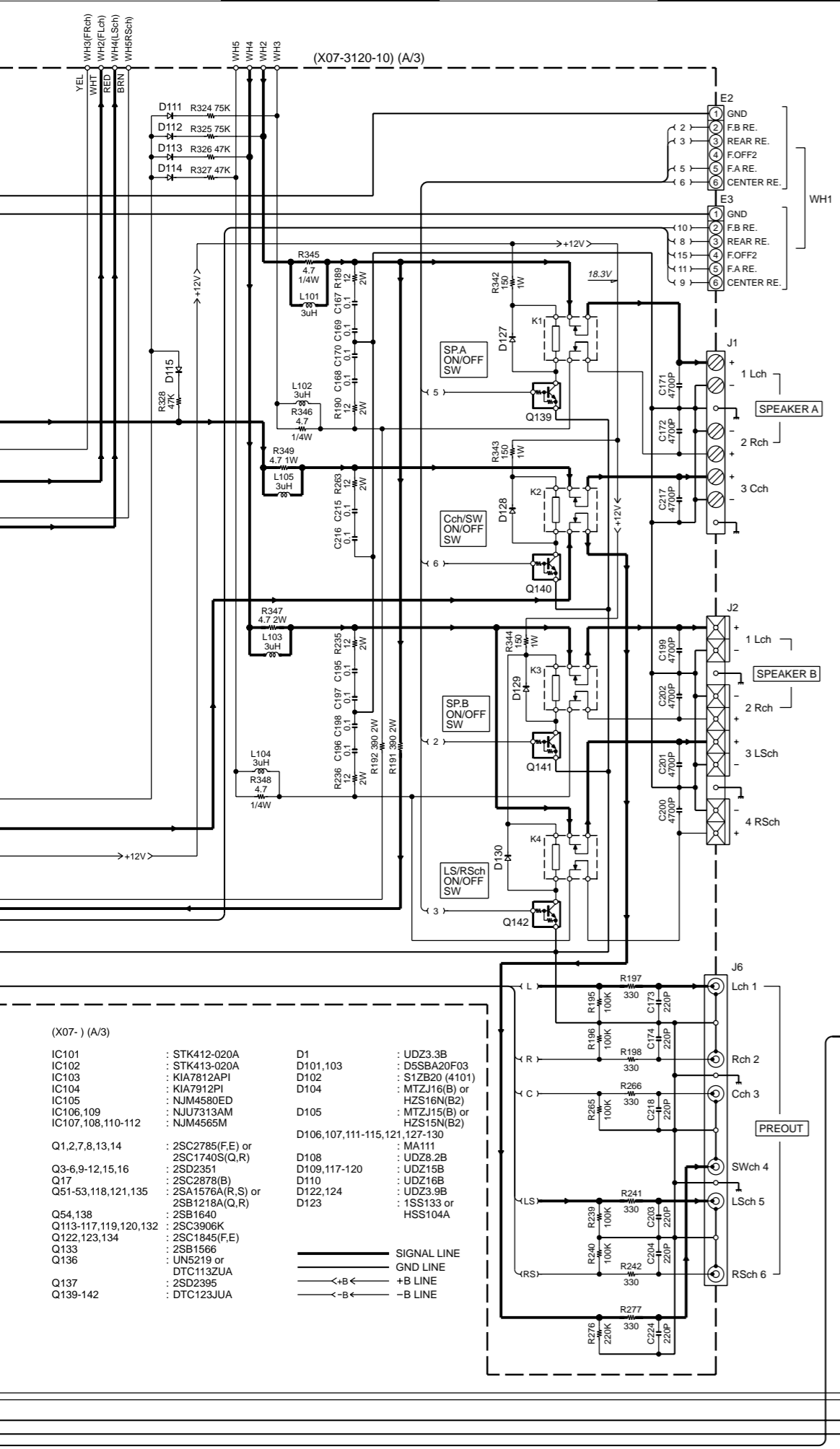
MM: 2.5V
PHONO
LINE: 200mV
CD
MD/TAPE REC
MD/TAPE PLAY
MONITOR REC
MONITOR PLAY
VIDEO1 OUT
VIDEO1 IN
VIDEO2 IN
VIDEO3 IN

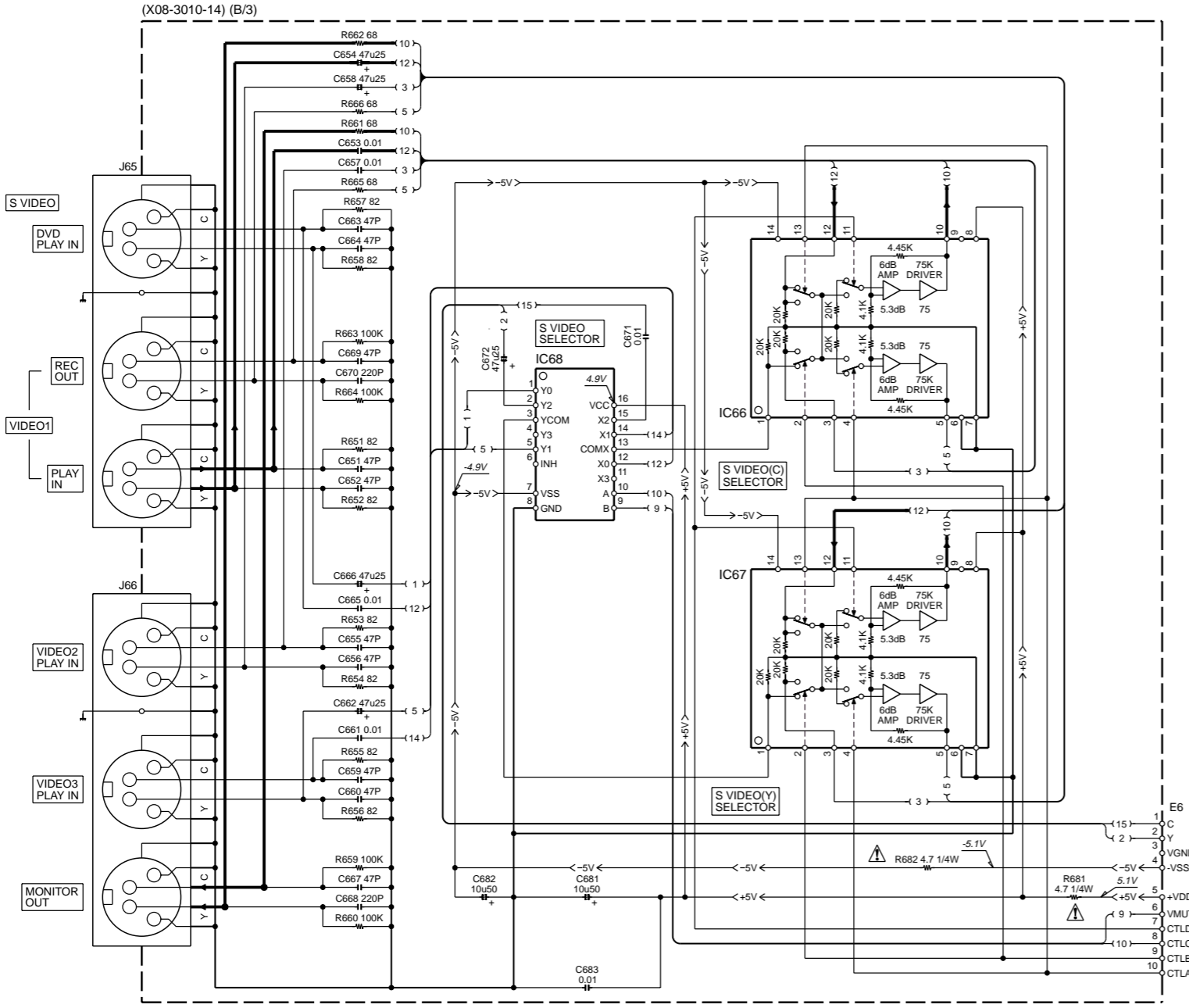
J3
J4
J5

Lch 1-8
Rch 1-8
Lch 1-4
Rch 1-4

CNS3
CN6

DET.
S LEVEL
SD
STEREO
Rch
GND
+12V
-12V
T MUTE
PLL DATA
PLL CLK
PLL CLK
PLL CLK
PLL DD
CH SPACE

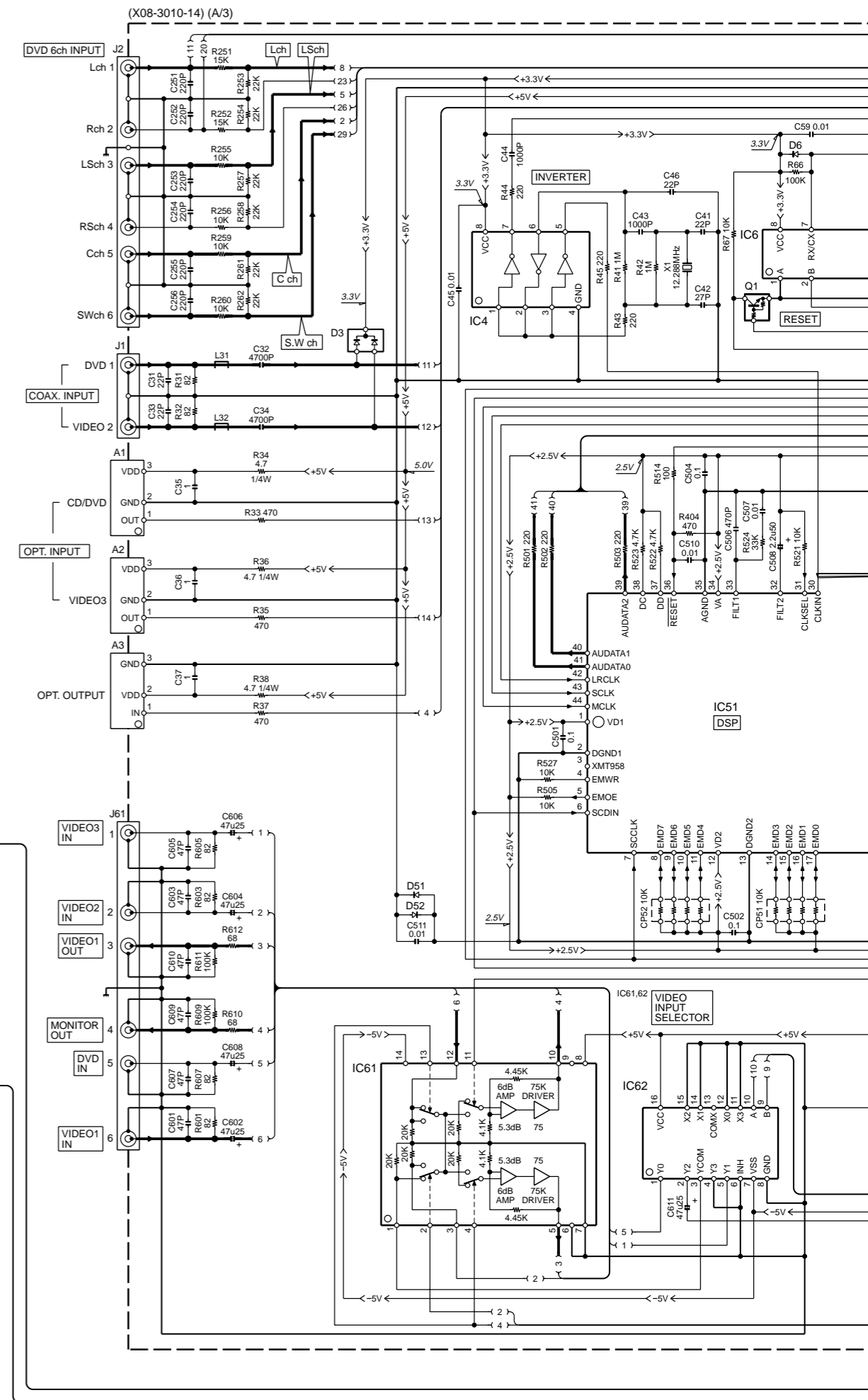
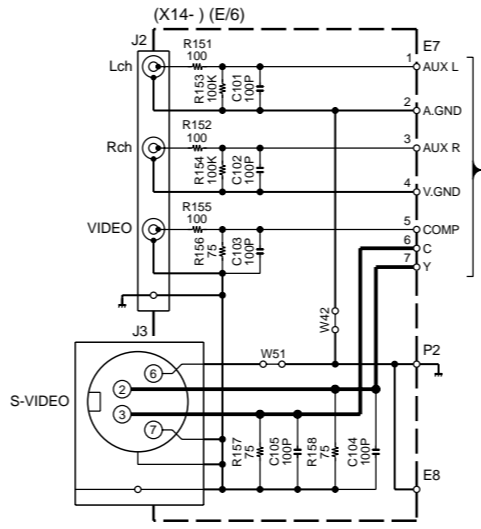
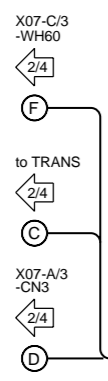


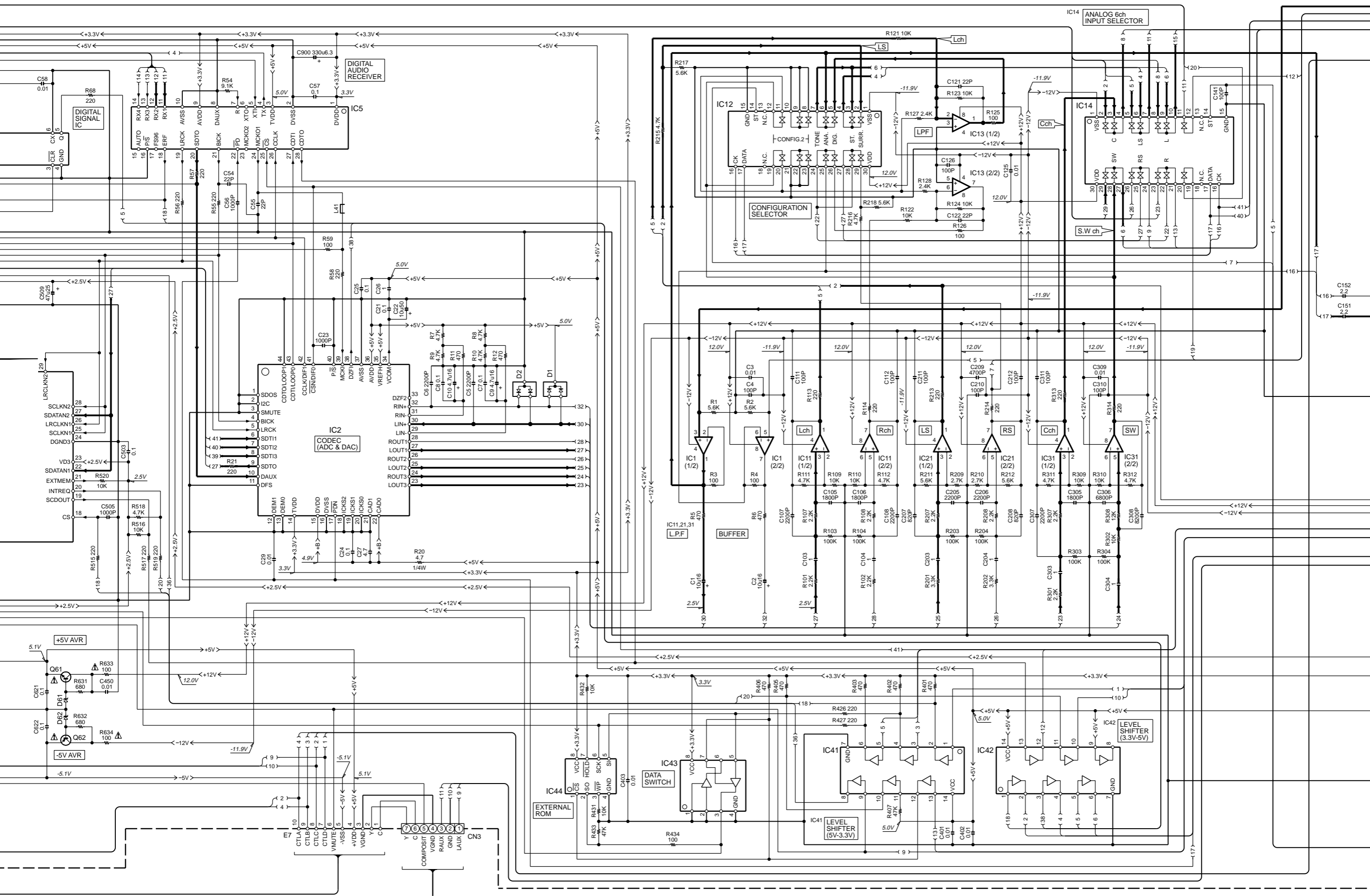


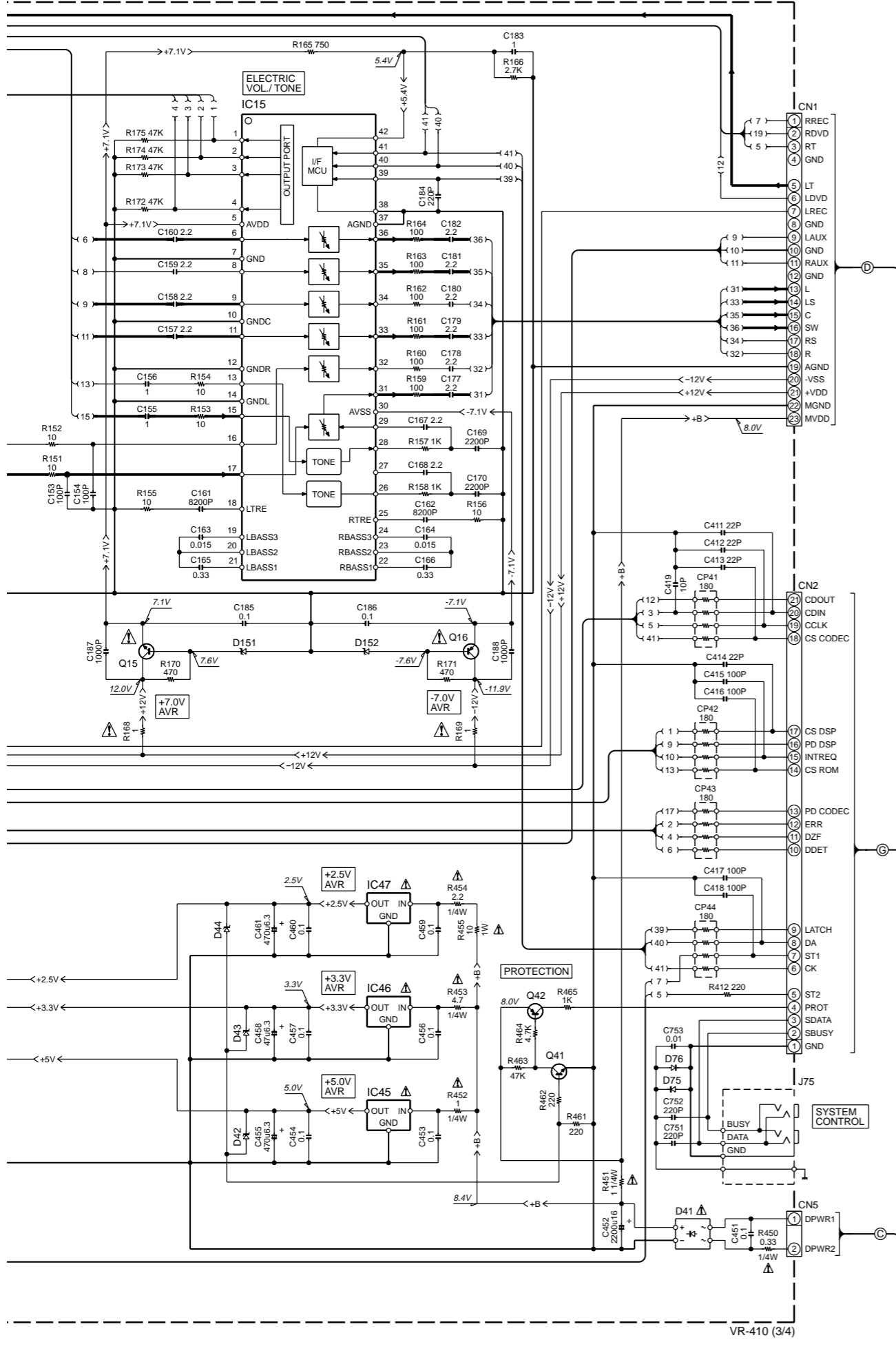
IC66,67 : NJM2279M
 IC68 : TC74HC4052AFT or NJU4052BV

CAUTION: For continued safety, replace safety critical components only with manufacturer's recommended parts (refer to parts list). Δ indicates safety critical components. For continued protection against risk of fire, replace only with same type and rating fuse(s). To reduce the risk of electric shock, leakage-current or resistance measurements shall be carried out (exposed parts are acceptably insulated from the supply circuit) before the appliance is returned to the customer.

DOLBY and the double-D symbol are trademarks of Dolby Laboratories Licensing Corporation. Noise reduction circuit made under license from Dolby Laboratories Licensing Corporation.

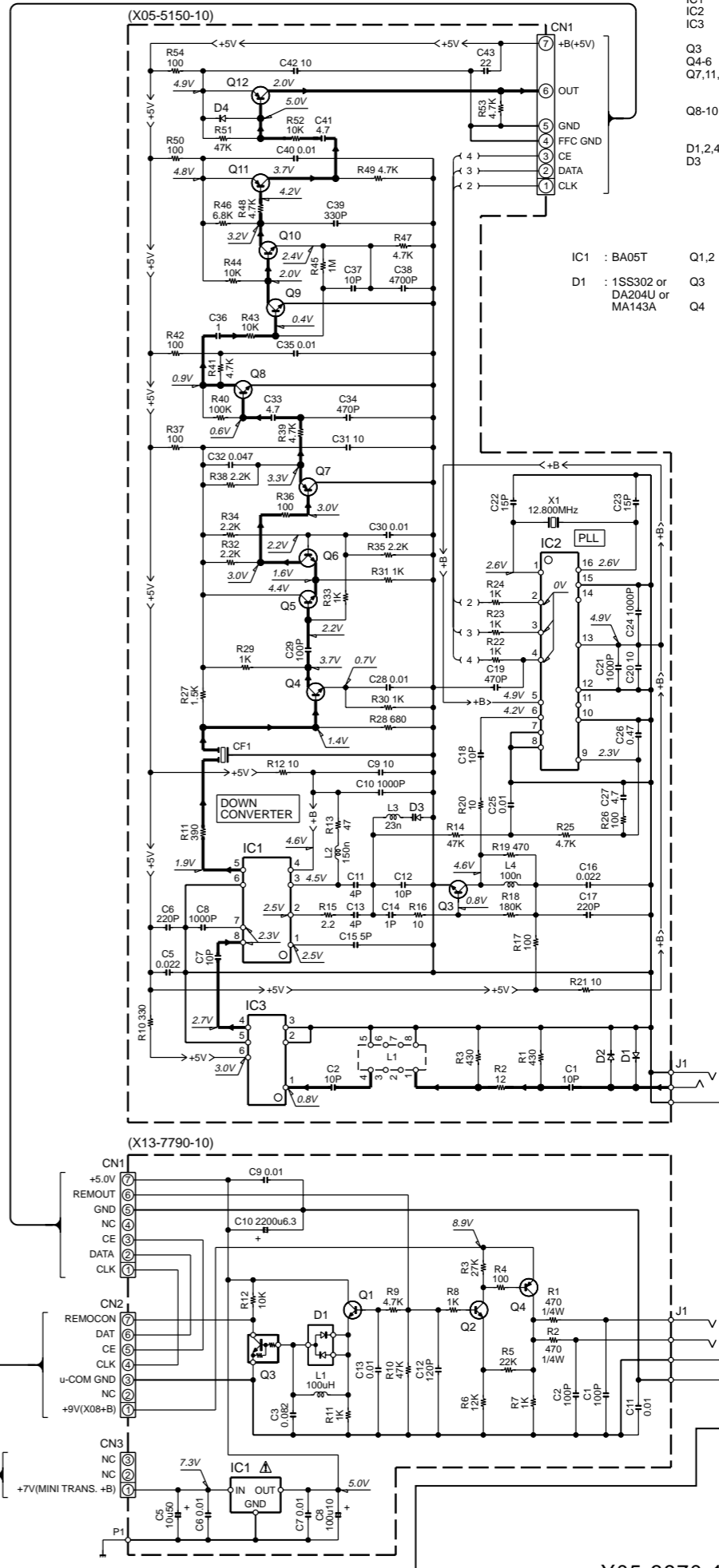
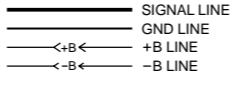


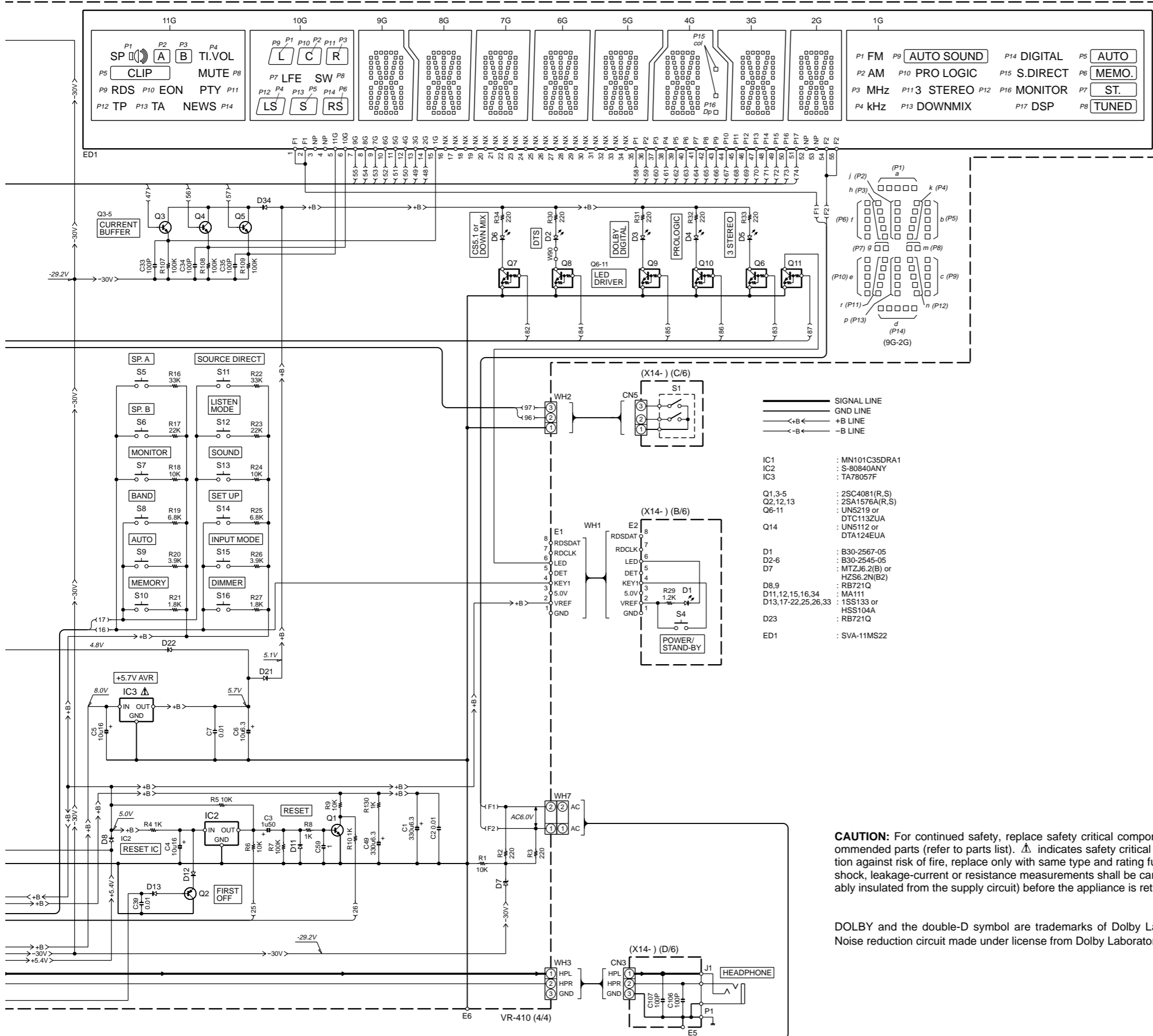




VR-410 (3/4)

- IC1,11,13,21,31 : NJM4565MD
 - IC2 : AK4527-VQ
 - IC4 : TC7WU04FU
 - IC5 : AK4110-VF
 - IC6 : TC7WH123FU
 - IC12,14 : NJU7311AM
 - IC15 : M62446FP
 - IC41 : TC74HC07AF
 - IC42 : TC74HCT7007AF
 - IC43 : TC7WH126FU
 - IC44 : AT25256WS2701
 - IC45 : TA48M05F
 - IC46 : TA48M033F
 - IC47 : TA48M025F
 - IC51 : CS493263-CLR
 - IC61 : NJM2279M
 - IC62 : TC74HC4052AFT or NJU4052BV
- Q1 : DTC124EUA or UN5212
 - Q15,61 : 2SD1664(Q,R) or 2SD1963(R,S)-G
 - Q16,62 : 2SB1132(Q,R) or 2SB1308(Q,R)-G
 - Q41 : 2SC4081(R,S) or 2SD1819A(Q,R,S)
 - Q42 : 2SA1576A(R,S) or 2SB1218A(Q,R)
- D1,3 : 1SS301 or DAN202U or MA142WK
 - D2 : 1SS300 or DAP202U or MA142WA
 - D6,51,52,75,76 : MA111
 - D41 : S1ZB20(4072)
 - D42,43,61,62 : UDZ5.6B
 - D44 : UDZ3.9B
 - D151,152 : UDZ7.5B





CAUTION: For continued safety, replace safety critical components only with manufacturer's recommended parts (refer to parts list). Δ indicates safety critical components. For continued protection against risk of fire, replace only with same type and rating fuse(s). To reduce the risk of electric shock, leakage-current or resistance measurements shall be carried out (exposed parts are acceptably insulated from the supply circuit) before the appliance is returned to the customer.

DOLBY and the double-D symbol are trademarks of Dolby Laboratories Licensing Corporation. Noise reduction circuit made under license from Dolby Laboratories Licensing Corporation.

* New Parts
 Parts without **Parts No.** are not supplied.
 Les articles non mentionnes dans le **Parts No.** ne sont pas fournis.
 Teile ohne **Parts No.** werden nicht geliefert.

7

Ref. No	Add- ress	New Parts	Parts No.	Description	Desti- nation	Re- marks
VR-410						
601	1A	*	A01-3731-01	METALLIC CABINET		
602	1A	*	A09-1166-08	BATTERY COVER		
604	2B		A46-0309-04	REAR COVER		
605	2A	*	A60-1742-02	PANEL		
606	1A	*	A70-1314-05	REMOTE CONTROLLER(RC-R0810)		
608	2A	*	A22-1833-31	SUB PANEL		
611	2A	*	B10-3542-12	FRONT GLASS		
612	2A	*	B12-0383-04	INDICATOR		
613	2A		B12-0341-04	INDICATOR		
614	2A		B43-0314-04	KENWOOD BADGE		
-			B46-0328-03	WARRANTY CARD		K
-			B46-0347-03	WARRANTY CARD		P
-		*	B46-0352-00	QUESTIONAIRE CARD		K
-			B58-0964-13	CAUTION CARD (UL)		K
-			B58-0967-03	CAUTION CARD (PL)		P
-		*	B58-1674-03	CAUTION CARD (P1,PRA,A4,1)		K
-		*	B60-4590-00	INSTRUCTION MANUAL(EN)		
-		*	B60-4591-00	INSTRUCTION MANUAL(FR)		P
-		*	B60-4608-00	INSTRUCTION MANUAL(EN)		
-		*	B60-4609-00	INSTRUCTION MANUAL(FR)		P
Δ 621	1C		E30-2941-05	AC POWER CORD		
622	2B,1C		E35-2456-05	FLAT CABLE (33P)		
623	1C		E35-2480-05	FLAT CABLE (23P)		
624	2B,1C	*	E35-2627-05	FLAT CABLE (21P)		
625	1C	*	E35-2623-05	FLAT CABLE (RF)		
632	2A		G10-0481-04	NON-WOVEN FABRIC		
-			G11-2416-04	CUSHION		
-			H10-7628-02	POLYSTYRENE FOAMED FIXTURE		
-			H10-7629-02	POLYSTYRENE FOAMED FIXTURE		
-			H25-0232-04	PROTECTION BAG (235X350X0.03)		
-			H25-0391-04	PROTECTION BAG		
-		*	H50-3597-04	ITEM CARTON CASE		
636	2C		J02-1464-03	FOOT		
638	2B,2C		J19-3752-14	UNIT HOLDER		
639	1C	*	J19-6078-05	UNIT HOLDER		
Δ 643	1C		J42-0083-05	POWER CORD BUSHING		
-			J61-0307-05	WIRE BAND		
651	2A		K29-7675-22	KNOB		
652	2A		K29-7678-04	KNOB		
653	2A		K29-7681-14	KNOB		
Δ 660	2B		L07-2896-15	POWER TRANSFORMER		
670	1A		T90-0836-05	LEAD WIRE ANTENNA		
671	1A		T90-0852-05	LOOP ANTENNA		
672	1A	*	T90-0850-05	ANTENNA ASSY		

L : Scandinavia K : USA P : Canada R : Mexico C : China I : Malaysia
 Y : PX(Far East,Hawaii) T : England E : Europe G : Germany V : China(Shanghai)
 Y : AAFES(Europe) X : Australia Q : Russia H : Korea M : Other Areas Δ indicates safety critical components .

VR-410

PARTS LIST

PARTS LIST

* New Parts
 Parts without **Parts No.** are not supplied.
 Les articles non mentionnés dans le **Parts No.** ne sont pas fournis.
 Teile ohne **Parts No.** werden nicht geliefert.

2

Ref. No	New Parts	Parts No.	Desti-nation
RF-RC DEMODULATOR(X05-5150-10)			
C1 ,2		CC73GCH1H100D	
C5		CK73GB1E223K	
C6		CC73GCH1H221J	
C7		CC73GCH1H100D	
C8		CK73GB1H102K	
C9		C93-0037-05	
C10		CK73GB1H102K	
C11		CC73GCH1H040C	
C12		CC73GCH1H100D	
C13		CC73GCH1H040C	
C14		CC73GCH1H010C	
C15		CC73GCH1H050C	
C16		CK73GB1E223K	
C17		CC73GCH1H221J	
C18		CC73GCH1H100D	
C19		CC73GCH1H471J	
C20		C93-0037-05	
C21		CK73GB1H102K	
C22 ,23		CC73GCH1H150J	
C24		CK73GB1H102K	
C25		CK73GB1E103K	
C26		CK73GF1A474Z	
C27		C93-0036-05	
C28		CK73GB1E103K	
C29		CC73GCH1H101J	
C30		CK73GB1E103K	
C31		C93-0037-05	
C32		CK73GB1C473K	
C33		C93-0036-05	
C34		CC73GCH1H471J	
C35		CK73GB1E103K	
C36		CK73GF1A105Z	
C37		CC73GCH1H100D	
C38		CK73GB1H472K	
C39		CC73GCH1H331J	
C40		CK73GB1E103K	
C41		C93-0036-05	
C42		C93-0037-05	
C43		C93-0039-05	
CN1		E40-8530-05	
J1		E11-0904-05	
CF1	*	L72-0626-05	
L1	*	L79-1263-05	
L2	*	L40-1585-67	
L3	*	L32-1021-05	
L4	*	L40-1085-67	
X1	*	L77-2274-05	
R1		RK73GB1J431J	
R2		RK73GB1J120J	
R3		RK73GB1J431J	
R10		RK73GB1J331J	
R11		RK73GB1J391J	
R12		RK73GB1J100J	
R13		RK73GB1J470J	
R14		RK73GB1J473J	
R15		RK73GB1J2R2J	
R16		RK73GB1J100J	
R17		RK73GB1J101J	
R18		RK73GB1J184J	
R19		RK73GB1J471J	
R20 ,21		RK73GB1J100J	
R22 -24		RK73GB1J102J	
R25		RK73GB1J472J	
R26		RK73GB1J101J	
R27		RK73GB1J152J	
R28		RK73GB1J681J	
R29 -31		RK73GB1J102J	
R32		RK73GB1J222J	
R33		RK73GB1J102J	
R34 ,35		RK73GB1J222J	
R36 ,37		RK73GB1J101J	
R38		RK73GB1J222J	
R39		RK73GB1J472J	

Ref. No	New Parts	Parts No.	Desti-nation
R40		RK73GB1J104J	
R41		RK73GB1J472J	
R42		RK73GB1J101J	
R43 ,44		RK73GB1J103J	
R45		RK73GB1J105J	
R46		RK73GB1J682J	
R47 -49		RK73GB1J472J	
R50		RK73GB1J101J	
R51		RK73GB1J473J	
R52		RK73GB1J103J	
R53		RK73GB1J472J	
R54		RK73GB1J101J	
D1 ,2		MA111	
D3		KV1832E	
D4		MA111	
IC1	*	UPC1687G	
IC2	*	LV2105V	
IC3	*	UPC2748T-E3	
Q3		2SC5065(O,Y)	
Q4 -6		2SC4178(F13,14)	
Q7		2SA1576A(R,S)	
Q7		2SB1218A(Q,R)	
Q8 -10		2SC4081(R,S)	
Q8 -10		2SD1819A(Q,R)	
Q11 ,12		2SA1576A(R,S)	
Q11 ,12		2SB1218A(Q,R)	
POWER AMP(X07-3120-10)			
C1		CK73FB1H223K	
C3		CK73FB1H103K	
C4		CC73FCH1H331J	
C5 ,6		CK73FB1H103K	
C7		CE04LW1C470M	
C10		CE04LW1C470M	
C11 ,12		CK73FB1H473K	
C14		CE04LW1C100M	
C15		CE04LW1H010M	
C16		CE04RW1HR47M	
C17		CE04LW1H010M	
C18		CC73FCH1H470J	
C19		CE04RW1A100M	
C20		CK73FB1H473K	
C21		CE04RW1V3R3M	
C22		CK73FB1H473K	
C23		CE04LW1C100M	
C24		CK73FB1H331K	
C25		CC73FCH1H471J	
C26		CK73FB1H223K	
C27		CE04HW1E4R7M	
C28 ,29		CE04LW1H2R2M	
C30 ,31		CK73FB1H333K	
C32		CE04LW1V4R7M	
C35		CK73FB1H332K	
C36		CK73FB1H103K	
C37 ,38		CE04LW1C100M	
C41		CC73FCH1H470J	
C42		CC73FCH1H120J	
C43		CC73FCH1H100D	
C44		CK73FB1H471K	
C45		CC73FCH1H220J	
C46		CE04LW1C100M	
C47		CK73FB1H102K	
C48		CE04LW1C470M	
C49		CE04LW1H2R2M	
C50		CC73FCH1H101J	
C51		CK73FB1H471K	
C52		CC73FCH1H101J	
C72		CE04LW1H010M	
C73		CE04LW1C470M	
C74		CK73FB1H102K	
C75		CC73FCH1H030C	
C76		CC73FCH1H470J	
C78		CK73FB1H223K	
C81		CK73FF1C105Z	
C82		CK73FB1H103K	
C83		CC73FCH1H101J	

Ref. No	New Parts	Parts No.	Desti-nation
C84 ,85		CK73FB1H223K	
C86		CK73FB1H471K	
C88		CK73FB1H332K	
C89 ,90		CK73FB1H472K	
C91		CK73FF1C105Z	
C101,102		CC73FCH1H390J	
C103,104		CE04RW1V100M	
C105,106		CC73FCH1H221J	
C107,108		CE04RW0J470M	
C109,110		CC73FCH1H471J	
C111,112		CQ93FMG1H123J	
C113,114		CK45FB1H332K	
C115,116		CE04LW1V4R7M	
C117,118		CC45FCH1H101J	
C119-136		CC73FCH1H221J	
C137,138		CE04LW1H2R2M	
C139,140		CC73FCH1H101J	
C141,142		CE04LW1H2R2M	
C143,144		CC73FCH1H101J	
C145,146		CE04LW1C220M	
C147,148		CC73FCH1H471J	
C149,150		CE04LW1E470M	
C151,152		CC73FCH1H100D	
C153,154		CE04KW1H100M	
C155,156		CE04KW1H2R2M	
C157,158		CC73FCH1H102J	
C159,160		CK73FB1H222K	
C161,162		CC73FCH1H220J	
C163,164		CC73FCH1H102J	
C165,166		CE04KW1A101M	
C167-170		CK73FF1E104Z	
C171,172		CQ93FMG1H472J	
C173,174		CC73FCH1H221J	
C175,176		CC73FCH1H471J	
C177,178		CE04LW1E470M	
C179,180		CC73FCH1H100D	
C181,182		CE04KW1H100M	
C183,184		CE04KW1H2R2M	
C185,186		CC73FCH1H102J	
C187,188		CK73FB1H222K	
C189,190		CC45FCH1H220J	
C191,192		CC73FCH1H102J	
C193,194		CE04KW1A101M	
C195-198		CK73FF1E104Z	
C199-202		CQ93FMG1H472J	
C203,204		CC73FCH1H221J	
C205		CC73FCH1H471J	
C206		CE04LW1E470M	
C207		CC73FCH1H100D	
C208		CE04KW1H100M	
C209		CE04KW1H2R2M	
C210		CC73FCH1H102J	
C211		CK73FB1H222K	
C212		CC45FCH1H220J	
C213		CC73FCH1H102J	
C214		CE04KW1A101M	
C215,216		CK73FF1E104Z	
C217		CQ93FMG1H472J	
C218		CC73FCH1H221J	
C220		CC73FCH1H471J	
C221		CE04LW1A101M	
C222		CC73FCH1H101J	
C223		CE04LW1H100M	
C224		CC73FCH1H221J	
C225,226		CK45FF1H103Z	
C227-230		CC73FCH1H220J	
C231,232		C90-3916-05	
C233,234		C90-3917-05	
C235		CE04KW1E222M	
C236		CE04KW1E471M	
C237,238		CE04LW1C101M	
C239		CE04LW1H220M	
C240		CE04LW1V470M	
C241		CC45FCH1H101J	
C242		CK45FF1H103Z	
C245		CC73FCH1H221J	

L : Scandinavia
 Y : PX(Far East,Hawaii)
 Y : AAFES(Europe)

K : USA
 T : England
 X : Australia

P : Canada
 E : Europe
 Q : Russia

R : Mexico
 G : Germany
 H : Korea

C : China
 V : China(Shanghai)
 M : Other Areas

I : Malaysia

△ indicates safety critical components .

PARTS LIST

* New Parts

Parts without **Parts No.** are not supplied.

Les articles non mentionnés dans le **Parts No.** ne sont pas fournis.

Teile ohne **Parts No.** werden nicht geliefert.

3

Ref. No	New Parts	Parts No.	Destination
C246		CK45FF1H103Z	
C247		CC73FCH1H220J	
C248		CC73FCH1H221J	
C250		CC73FCH1H102J	
C251,252		CE04KW2A100M	
C253,254		CE04KW2A101M	
C255,256		CE04DW1J101M	
C259		CE04LW1A101M	
C260		CE04LW0J221M	
C261		CE04LW1V4R7M	
C262		CE04LW0J221M	
C263		CE04LW1V4R7M	
C264		CE04LW1H010M	
C265-267		CC73FCH1H102J	
C268		CK73FF1C105Z	
C415		CE04LW1H010M	
C416,417		CE04HW1E100M	
C601		CE04LW1E332M	
C602		CE04LW1H100M	
C603		CK45FF1H103Z	
C604		CE04LW1H100M	
C606		CK73FB1E104K	
CN1		E40-8364-05	
CN2		E40-8197-05	
CN3		E40-8485-05	
CN4		E40-4871-05	
CN5		E40-9831-05	
CN6		E40-9848-05	
CN7		E40-8490-05	
CN61,62		E40-4245-05	
CN65		E40-8196-05	
J1		E70-0049-05	
J2		E70-0065-05	
J3,4		E63-1143-05	
J5	*	E63-1144-05	
J6	*	E63-1145-05	
J8		E20-0321-05	
J8		E70-0052-05	
J61		E03-0148-05	
WH60	*	E35-2663-05	
E1		F10-1129-14	
F1		F50-0077-05	
CN66,67		J13-0075-05	
CF1,2		L72-0596-05	
L1		L39-1384-05	
L2		L40-1091-82	
L3		L30-0911-05	
L4		L30-0933-05	
L101-105		L39-1373-05	
T1		L07-2809-05	
X1		L77-2232-05	
R1		RK73FB2A101J	
R4		RK73FB2A681J	
R5		RK73FB2A332J	
R6		RK73FB2A221J	
R7		RK73FB2A821J	
R8		RK73FB2A330J	
R9		RK73FB2A391J	
R10		RK73FB2A102J	
R11		RK73FB2A330J	
R12		RK73FB2A101J	
R14		RK73FB2A101J	
R15		RK73FB2A472J	
R16		RK73FB2A220J	
R17		RK73FB2A362J	
R18		RK73FB2A302J	
R19		RK73FB2A822J	
R20		RK73FB2A392J	
R23		RK73FB2A912J	
R25		RK73FB2A163J	
R27,28		RK73FB2A682J	
R32		RK73FB2A272J	
R33,34		RK73FB2A102J	
R42		RK73FB2A103J	

Ref. No	New Parts	Parts No.	Destination
R43		RK73FB2A221J	
R44	Δ	RD14NB2E271J	
R45		RK73EB2B102J	
R46		RK73FB2A102J	
R47		RK73EB2B102J	
R48		RK73FB2A102J	
R49		RK73FB2A103J	
R50	Δ	RD14NB2E471J	
R51		RK73FB2A562J	
R52		RK73FB2A101J	
R53		RK73FB2A222J	
R54		RK73FB2A102J	
R55		RK73FB2A333J	
R56,57		RK73FB2A102J	
R58		RK73FB2A123J	
R59		RK73FB2A122J	
R72,73		RK73FB2A153J	
R74		RK73FB2A473J	
R75		RK73FB2A822J	
R76		RK73FB2A182J	
R78		RK73FB2A821J	
R79		RK73FB2A102J	
R81	Δ	RS14KB3A820J	
R83		RK73FB2A102J	
R84		RK73EB2B102J	
R85-87		RK73FB2A105J	
R88		RK73FB2A563J	
R89		RK73FB2A333J	
R101,102		RK73FB2A102J	
R103,104		RK73FB2A273J	
R105,106		RK73FB2A101J	
R117,118		RK73FB2A102J	
R119,120		RK73FB2A224J	
R121,122		RK73FB2A102J	
R123,124		RK73FB2A224J	
R125,126		RK73FB2A102J	
R127,128		RK73FB2A224J	
R129,130		RK73FB2A102J	
R131,132		RK73FB2A224J	
R133,134		RK73FB2A102J	
R135,136		RK73FB2A224J	
R137,138		RK73FB2A102J	
R139,140		RK73FB2A224J	
R141,142		RK73FB2A102J	
R143,144		RK73FB2A224J	
R145,146		RK73FB2A102J	
R147,148		RK73FB2A224J	
R149,150		RK73FB2A102J	
R151-156		RK73FB2A224J	
R159		RK73FB2A562J	
R161,162		RK73FB2A302J	
R163,164		RK73FB2A682J	
R165,166		RK73FB2A183J	
R167,168		RK73FB2A182J	
R169,170		RK73FB2A224J	
R171,172		RK73FB2A183J	
R173,174		RK73FB2A222J	
R175,176		RK73FB2A104J	
R177,178		RK73FB2A563J	
R179		RK73FB2A102J	
R180		RK73EB2B102J	
R181-184		RS14KB3DR22J	
R185,186		RK73FB2A563J	
R187,188		RK73FB2A182J	
R189,190		RS14KB3D120J	
R191,192		RS14KB3D391J	
R195,196		RK73FB2A104J	
R197,198		RK73FB2A331J	
R199,200		RK73FB2A333J	
R201,202		RK73FB2A303J	
R203,204		RK73FB2A912J	
R205,206		RK73FB2A471J	
R209,210		RK73FB2A102J	
R211,212		RK73FB2A273J	
R213,214		RK73FB2A182J	
R215,216		RK73FB2A224J	

Ref. No	New Parts	Parts No.	Destination
R217,218		RK73FB2A183J	
R219,220		RK73EB2B222J	
R221,222		RK73FB2A104J	
R223,224		RK73FB2A563J	
R225		RK73FB2A102J	
R227-230		RS14KB3DR22J	
R233,234		RK73FB2A182J	
R235,236		RS14KB3D120J	
R239,240		RK73FB2A104J	
R241,242		RK73FB2A331J	
R243,244		RK73FB2A333J	
R245,246		RK73FB2A303J	
R247,248		RK73FB2A912J	
R249,250		RK73FB2A471J	
R251		RK73FB2A183J	
R252		RK73FB2A182J	
R253		RK73FB2A224J	
R254		RK73FB2A183J	
R256		RK73FB2A104J	
R257		RK73FB2A563J	
R259,260		RS14KB3DR22J	
R262		RK73FB2A182J	
R263		RS14KB3D120J	
R265		RK73FB2A104J	
R266		RK73FB2A331J	
R267		RK73FB2A303J	
R268		RK73FB2A912J	
R269		RK73FB2A471J	
R270		RK73FB2A333J	
R271		RK73FB2A183J	
R272		RK73FB2A241J	
R273		RK73FB2A332J	
R274		RK73FB2A183J	
R276		RK73FB2A224J	
R277		RK73FB2A331J	
R278		RK73FB2A102J	
R279,280		R92-1956-05	
R281	Δ	R92-1945-05	
R283	Δ	RK73FB2A1R0J	
R284		RK73FB2A104J	
R285	Δ	R92-1945-05	
R287	Δ	RK73EB2B101J	
R301,302		RK73FB2A513J	
R303-306		RS14KB3A392J	
R307		RK73EB2B273J	
R308		RK73FB2A273J	
R309,310	Δ	RK73FB2A1R0J	
R312		RD14NB2E103J	
R313,314		RK73FB2A473J	
R315	Δ	RK73FB2A1R0J	
R316	Δ	RD14NB2E101J	
R320		RK73FB2A103J	
R323		RK73FB2A393J	
R324,325		RK73FB2A753J	
R326-328		RK73FB2A473J	
R329		RK73FB2A123J	
R330		RK73FB2A153J	
R331		RK73FB2A332J	
R332		RK73FB2A682J	
R333		RK73FB2A223J	
R334		RK73FB2A123J	
R335		RK73FB2A153J	
R336		RK73FB2A332J	
R337		RK73FB2A682J	
R339,340		RK73FB2A472J	
R341	Δ	R92-1945-05	
R342-344		RS14KB3A151J	
R347		RS14KB3D4R7J	
R349		RS14KB3A4R7J	
R350	Δ	RK73FB2A1R0J	
R351		RK73FB2A103J	
R352		RK73FB2A223J	
R353		RK73FB2A102J	
R356-358		RK73FB2A103J	
R360		RK73FB2A103J	
R361,362		RK73FB2A473J	

L : Scandinavia
Y : PX(Far East,Hawaii)
Y : AAFES(Europe)

K : USA
T : England
X : Australia

P : Canada
E : Europe
Q : Russia

R : Mexico
G : Germany
H : Korea

C : China
V : China(Shanghai)
M : Other Areas

I : Malaysia

Δ indicates safety critical components.

PARTS LIST

* New Parts
 Parts without **Parts No.** are not supplied.
 Les articles non mentionnés dans le **Parts No.** ne sont pas fournis.
 Teile ohne **Parts No.** werden nicht geliefert.



Ref. No	New Parts	Parts No.	Desti-nation	Ref. No	New Parts	Parts No.	Desti-nation	Ref. No	New Parts	Parts No.	Desti-nation
R363		RK73FB2A361J		△ D601		S1ZB20(4101)		C33		CC73FCH1H220J	
R365-370		RK73FB2A102J		△ D602-605		HSS104A		C34		CK73FB1H472K	
R371		RK73FB2A563J		△ D602-605		1SS133		C35-37		CK73FF1C105Z	
R372		RK73FB2A104J		D608		HSS104A		C41		CC73FCH1H220J	
R373		RK73FB2A361J		D608		1SS133		C42		CC73FCH1H270J	
R375		RK73FB2A102J		△ IC101		STK412-020A		C43,44		CK73FB1H102K	
R377,378		RK73FB2A102J		△ IC102		STK413-020A		C45		CK73FB1H103K	
R384		RK73EB2B102J		△ IC103		KIA7812API		C46		CC73FCH1H220J	
R387,388		RK73FB2A473J		△ IC104		KIA7912PI		C54,55		CC73FCH1H220J	
R389		RK73FB2A472J		△ IC105		NUM4580ED		C56		CK73FB1H102K	
R390		RK73FB2A473J		IC106		NUJ7313AM		C57		CK73FF1C105Z	
△ R391-394		RK73FB2A470J		△ IC107,108		NUM4565M		C58,59		CK73FB1H103K	
△ R397-399		RD14NB2E1R0J		IC109		NUJ7313AM		C103,104		CK73FF1C105Z	
△ R601		RD14NB2E1R0J		△ IC110-112		NUM4565M		C105,106		CK73FB1H182K	
△ R604		RD14NB2E100J		IC201		LA1837		C107,108		CK73FB1H222K	
R609		RD14NB2E270J		IC202		LC72131		C111,112		CC73FCH1H101J	
△ R610		R92-1844-05		△ IC601		XC62FP5102P		C121,122		CC73FCH1H220J	
VR1		R32-0037-05		Q1,2		2SC1740S(Q,R)		C125		CK73FB1H103K	
W108		R92-0670-05		Q1,2		2SC2785(F,E)		C126		CC73FCH1H101J	
W301		R92-0679-05		Q3-6		2SD2351		C141		CC73FCH1H101J	
W302		R92-0670-05		Q7,8		2SC1740S(Q,R)		C151,152		CK73FF1C225Z	
W303-306		R92-0679-05		Q7,8		2SC2785(F,E)		C153,154		CC73FCH1H101J	
W307		R92-0670-05		Q9-12		2SD2351		C155,156		CK73FF1C105Z	
W308		R92-0679-05		Q13,14		2SC1740S(Q,R)		C157-160		CK73FF1C225Z	
W309-311		R92-0670-05		Q13,14		2SC2785(F,E)		C161,162		CK73FB1H822K	
W312		R92-0679-05		Q15,16		2SD2351		C163,164		CK73FB1H153K	
W313		R92-0670-05		Q17		2SC2878(B)		C165,166		CK73FB1C334K	
W315-318		R92-0679-05		Q51-53		2SA1576A(R,S)		C167,168		CK73FF1C225Z	
W319,320		R92-0670-05		Q51-53		2SB1218A(Q,R)		C169,170		CK73FB1H222K	
W321		R92-0679-05		△ Q54		2SB1640		C177-182		CK73FF1C225Z	
W322,323		R92-0670-05		Q113-117		2SC3906K		C183		CK73FF1C105Z	
W324-333		R92-0679-05		Q118		2SA1576A(R,S)		C184		CC73FCH1H221J	
W336		R92-0679-05		Q118		2SB1218A(Q,R)		C185,186		CK73FB1E104K	
W338,339		R92-0670-05		Q119,120		2SC3906K		C187,188		CK73FB1H102K	
W340,341		R92-0679-05		Q121		2SA1576A(R,S)		C203,204		CK73FF1C105Z	
W342,343		R92-0670-05		Q121		2SB1218A(Q,R)		C205,206		CK73FB1H222K	
W506		R92-0679-05		Q122,123		2SC1845(F,E)		C207,208		CK73FB1H821K	
W513,514		R92-0679-05		Q132		2SC3906K		C209		CK73FB1H472K	
W523		R92-0679-05		Q133		2SB1566		C210-212		CC73FCH1H101J	
W651-655		R92-0670-05		Q134		2SC1845(F,E)		C251-256		CC73FCH1H221J	
W659		R92-0670-05		Q135		2SA1576A(R,S)		C303,304		CK73FF1C105Z	
W662		R92-0670-05		Q135		2SB1218A(Q,R)		C305		CK73FB1H182K	
W680		R92-0679-05		Q136		DTC113ZUA		C306		CK73FB1H682K	
W682-685		R92-0679-05		Q136		UN5219		C307		CK73FB1H222K	
				Q137		2SD2395		C308		CK73FB1H822K	
△ K1-4		S76-0042-05		△ Q138		2SB1640		C309		CK73FB1H103K	
△ K601		S76-0099-05		△ Q139-142		DTC123JUA		C310,311		CC73FCH1H101J	
D1		UDZ3.3B		Q201		2SC4081(R,S)		C401-403		CK73FB1H103K	
△ D101		D5SBA20F03		Q201		2SD1819A(Q,R)		C411-414		CC73FCH1H220J	
△ D102		S1ZB20(4101)		Q202		2SA1576A(R,S)		C415-418		CC73FCH1H101J	
△ D103		D5SBA20F03		Q202		2SB1218A(Q,R)		C419		CC73FCH1H100D	
△ D104		HZS16N(B2)		Q210,211		2SD1757K		C450		CK73FB1H103K	
D104		MTZJ16(B)		Q212		2SA1576A(R,S)		C451		CK73FB1E104K	
D105		HZS15N(B2)		Q212		2SB1218A(Q,R)		C452		CE04LW1C222M	
D105		MTZJ15(B)		Q214		2SA1576A(R,S)		C453,454		CK73FB1E104K	
D106,107		MA111		Q214		2SA1576A(R,S)					
D108		UDZ8.2B		Q214		2SA1576A(R,S)					
D109		UDZ15B		Q214		2SB1218A(Q,R)		C455		CE04LW0J471M	
D110		UDZ16B		Q601		2SC1740S(Q,R)		C456,457		CK73FB1E104K	
D111-115		MA111		Q601		2SC2785(F,E)		C458		C92-0047-05	
D117-120		UDZ15B		A1		W02-2622-05		C459,460		CK73FB1E104K	
D121		MA111						C461		CE04LW0J471M	
D122		UDZ3.9B		PREAMP(X08-3010-14)				C501-504		CK73FB1E104K	
D123		HSS104A		C1,2		CE04RW1C100M		C505		CK73FB1H102K	
D123		1SS133		C3		CK73FB1H103K		C506		CC73FCH1H471J	
D123		1SS133		C4		CC73FCH1H101J		C507		CK73FB1H103K	
D124		UDZ3.9B		C5,6		CK73FB1H222K		C508		CE04LW1H2R2M	
D127-130		MA111		C7,8		CK73FB1E104K					
D201		DA204U		C9,10		CE04RW1C4R7M		C509		CE04LW1E470M	
D201		MA143A		C21		CK73FB1E104K		C510,511		CK73FB1H103K	
D201		1SS302		C22		CE04LW1H100M		C601		CC73FCH1H470J	
D203		HZS8.2N(B2)		C23		CK73FB1H102K		C602		CE04LW1E470M	
D203		MTZJ8.2(B)		C24,25		CK73FB1E104K		C603		CC73FCH1H470J	
D204		HZS5.1N(B2)		C26		CK73FF1C105Z		C604		CE04LW1E470M	
D204		MTZJ5.1(B)		C27		C91-1597-05		C605		CC73FCH1H470J	
D209		HZS3.3N(B2)		C29		CK73FB1H103K		C606		CE04LW1E470M	
D209		MTZJ3.3(B)		C31		CC73FCH1H220J		C607		CC73FCH1H470J	
D213		MA111		C32		CK73FB1H472K		C608		CE04LW1E470M	
								C609,610		CC73FCH1H470J	

L : Scandinavia K : USA P : Canada R : Mexico C : China
 Y : PX(Far East,Hawaii) T : England E : Europe G : Germany V : China(Shanghai)
 Y : AAFES(Europe) X : Australia Q : Russia H : Korea M : Other Areas

I : Malaysia

△ indicates safety critical components.

PARTS LIST

5

* New Parts
 Parts without **Parts No.** are not supplied.
 Les articles non mentionnés dans le **Parts No.** ne sont pas fournis.
 Teile ohne **Parts No.** werden nicht geliefert.

Ref. No	New Parts	Parts No.	Desti-nation
C611 C621,622 C651,652 C653		CE04LW1E470M CK73FB1E104K CC73FCH1H470J CK73FB1H103K	
C654 C655,656 C657 C658 C659,660		CE04LW1E470M CC73FCH1H470J CK73FB1H103K CE04LW1E470M CC73FCH1H470J	
C661 C662 C663,664 C665 C666		CK73FB1H103K CE04LW1E470M CC73FCH1H470J CK73FB1H103K CE04LW1E470M	
C667 C668 C669 C670 C671		CC73FCH1H470J CC73FCH1H221J CC73FCH1H470J CC73FCH1H221J CK73FB1H103K	
C672 C681,682 C683 C751,752 C753		CE04LW1E470M CE04LW1H100M CK73GB1H103K CC73FCH1H221J CK73FB1H103K	
C900		CE04LW0J331M	
CN1 CN2 CN3 CN5 CN5		E40-8485-05 E40-8484-05 E40-4297-05 E40-4248-05 E40-8358-05	
J1 J2 J61 J65,66 J75	*	E63-1080-05 E63-1139-05 E63-1142-05 E56-0011-05 E11-0293-05	
L31,32 L41 X1		L92-0511-05 L92-0510-05 L77-2296-05	
CP41-44 CP51,52 R1,2 R3,4 R5,6		R90-0728-05 R90-0714-05 RK73FB2A562J RK73FB2A101J RK73FB2A471J	
R7,10 R11,12 R20 R21 R31,32		RK73FB2A472J RK73FB2A471J R92-1946-05 RK73FB2A221J RK73FB2A820J	
R33 R34 R35 R36 R37		RK73FB2A471J RD14NB2E4R7J RK73FB2A471J RD14NB2E4R7J RK73FB2A471J	
R38 R41,42 R43-45 R54 R55-58		RD14NB2E4R7J RK73FB2A105J RK73FB2A221J RK73FB2A912J RK73FB2A221J	
R59 R66 R67 R68 R101,102		RK73FB2A101J RK73FB2A104J RK73FB2A103J RK73FB2A221J RK73FB2A222J	
R103,104 R107,108 R109,110 R111,112 R113,114		RK73FB2A104J RK73FB2A222J RK73FB2A103J RK73FB2A472J RK73FB2A221J	
R121-124 R125,126 R127,128 R151-156 R157,158		RK73FB2A103J RK73FB2A101J RK73FB2A242J RK73FB2A100J RK73FB2A102J	
R159-164 R165		RK73FB2A101J RK73FB2A751J	

Ref. No	New Parts	Parts No.	Desti-nation
R166 R168,169 R170,171	△	RK73FB2A272J RK73FB2A1R0J RK73FB2A471J	
R172-175 R201,202 R203,204 R207,208 R209,210		RK73FB2A473J RK73FB2A332J RK73FB2A104J RK73FB2A222J RK73FB2A272J	
R211,212 R213,214 R215,216 R217,218 R251,252		RK73FB2A562J RK73FB2A221J RK73FB2A472J RK73FB2A562J RK73FB2A153J	
R253,254 R255,256 R257,258 R259,260 R261,262		RK73FB2A223J RK73FB2A103J RK73FB2A223J RK73FB2A103J RK73FB2A223J	
R301 R302 R303,304 R307 R308		RK73FB2A222J RK73FB2A103J RK73FB2A104J RK73FB2A222J RK73FB2A123J	
R309,310 R311,312 R313,314 R401-406 R407		RK73FB2A103J RK73FB2A472J RK73FB2A221J RK73FB2A471J RK73FB2A473J	
R412 R426,427 R431,432 R433 R434		RK73FB2A221J RK73FB2A221J RK73FB2A103J RK73FB2A471J RK73FB2A101J	
R450 R451,452 R453 R454 R455	△ △ △ △	R92-1918-05 R92-1945-05 R92-1946-05 R92-1960-05 R92-2170-05	
R461,462 R463 R464 R465 R501-503		RK73FB2A221J RK73FB2A473J RK73FB2A472J RK73FB2A102J RK73FB2A221J	
R505 R514 R515 R516 R517		RK73FB2A103J RK73FB2A101J RK73FB2A221J RK73FB2A103J RK73FB2A221J	
R518 R519 R520,521 R522,523 R524		RK73FB2A472J RK73FB2A221J RK73FB2A103J RK73FB2A472J RK73FB2A333J	
R527 R601 R603 R605 R607		RK73FB2A103J RK73FB2A820J RK73FB2A820J RK73FB2A820J RK73FB2A820J	
R609 R610 R611 R612 R631,632		RK73FB2A104J RK73FB2A680J RK73FB2A104J RK73FB2A680J RK73FB2A681J	
R633,634 R651-658 R659,660 R661,662 R663,664	△	R92-1954-05 RK73FB2A820J RK73FB2A104J RK73FB2A680J RK73FB2A104J	
R665,666 R681,682	△	RK73FB2A680J RD14NB2E4R7J	
D1 D1 D1 D2 D2		DAN202U MA142WK 1SS301 DAP202U MA142WA	

Ref. No	New Parts	Parts No.	Desti-nation
D2 D3 D3 D3 D6		1SS300 DAN202U MA142WK 1SS301 MA111	
D41 D42,43 D44 D51,52 D61,62	△	S1ZB20(4072) UDZ5.6B UDZ3.9B MA111 UDZ5.6B	
D75,76 D151,152 IC1 IC2 IC4		MA111 UDZ7.5B NJM4565MD AK4527-VQ TC7WU04FU	
IC5 IC6 IC11 IC12 IC13		AK4110-VF TC7WH123FU NJM4565MD NJU7311AM NJM4565MD	
IC14 IC15 IC21 IC31 IC41		NJU7311AM M62446FP NJM4565MD NJM4565MD TC74HC07AF	
IC42 IC43 IC44 IC45 IC46		TC74HCT7007AF TC7WH126FU AT25256WS2701 TA48M05F TA48M033F	
IC47 IC51 IC61 IC62 IC62	△ △ △ △ △	TA48M025F CS493263-CLR NJM2279M NJU4052BV TC74HC4052AFT	
IC66,67 IC68 IC68 Q1 Q1		NJM2279M NJU4052BV TC74HC4052AFT DTC124EUA UN5212	
Q15 Q15 Q16 Q16 Q41	△ △ △ △ △	2SD1664(Q,R) 2SD1963(R,S)-G 2SB1132(Q,R) 2SB1308(Q,R)-G 2SC4081(R,S)	
Q41 Q42 Q42 Q61 Q61		2SD1819A(Q,R) 2SA1576A(R,S) 2SB1218A(Q,R) 2SD1664(Q,R) 2SD1963(R,S)-G	
Q62 Q62	△ △	2SB1132(Q,R) 2SB1308(Q,R)-G	
A1,2 A3		W02-2716-05 W02-2717-05	
SUB(X13-7790-10)			
C1,2 C3 C5 C6,7 C8		CC73GCH1H101J CK73GB1C823K CE04LW1H100M CQ93FMG1H103J CE04LW1A101M	
C9 C10 C11 C12 C13		CQ93FMG1H103J CE04LW0J222M CK73GB1H103K CC45FSL1H121J CQ93FMG1H103J	
CN1 CN2 CN3 J1	*	E40-8559-05 E40-3251-05 E40-3247-05 E11-0291-05	
L1		L40-1011-58	
R1,2 R3 R4 R5		RD14NB2E471J RK73FB2A273J RK73FB2A101J RK73FB2A223J	

L : Scandinavia K : USA P : Canada R : Mexico C : China
 Y : PX(Far East,Hawaii) T : England E : Europe G : Germany V : China(Shanghai)
 Y : AAFES(Europe) X : Australia Q : Russia H : Korea M : Other Areas

I : Malaysia

△ indicates safety critical components.

VR-410

SPECIFICATIONS

AUDIO section

Rated power output during STEREO operation

100 watts per channel minimum RMS, both channels driven, at 8 Ω from 20 Hz to 20 kHz with no more than 0.7% total harmonic distortion. (FTC)

Effective power output during SURROUND operation

FRONT (20-20kHz, 0.7% T.H.D. at 8 Ω, one channel driven)	100 W + 100 W
CENTER (20-20kHz, 0.7% T.H.D. at 8 Ω, one channel driven)	100 W
SURROUND (20-20kHz, 0.7% T.H.D. at 8 Ω, one channel driven)	100 W + 100 W
Total harmonic distortion	0.055% (1 kHz, 50W, 8 Ω)
Frequency response (IHF'66)	
CD	10 Hz ~ 53 kHz, +0 dB, -3.0 dB
Signal to noise ratio (IHF'66)	
PHONO (MM)	75 dB
CD	91 dB
Input sensitivity / impedance	
PHONO (MM)	2.5 mV / 27 kΩ
CD	200 mV / 47 kΩ
DVD / 6CH INPUT	200 mV / 47 kΩ
Output level / impedance	
TAPE REC	200 mV / 1 kΩ
MONITOR OUT	200 mV / 1 kΩ
PRE OUT (SUBWOOFER)	2 V / 2.2 kΩ
Tone control	
BASS	±10 dB (at 100 Hz)
TREBLE	±10 dB (at 10 kHz)

DIGITAL AUDIO section

Sampling frequency	32 kHz, 44.1 kHz, 48 kHz, 96kHz
Input level / impedance / wave length	
Optical	(-15 dBm ~ -21 dBm), 660 nm ±30nm
Coaxial	0.5 Vp-p / 75 Ω

Notes

1. KENWOOD follows a policy of continuous advancements in development. For this reason specifications may be changed without notice.
2. The full performance may not be exhibited in an extremely cold location (under a water-freezing temperature).

VIDEO section

VIDEO inputs / outputs

VIDEO (composite)	1 Vp-p / 75 Ω
S VIDEO (luminance signal)	1 Vp-p / 75 Ω
(chrominance signal)	0.286 Vp-p / 75 Ω

FM tuner section

Tuning frequency range	87.5 MHz ~ 108 MHz
Usable sensitivity (MONO)	1.6 μV (75 Ω) / 15.2 dBf (75 kHz DEV., SINAD 30 dB)
50dB quieting sensitivity	
STEREO	31.6 μV (75 Ω) / 41.2 dBf
Total harmonic distortion (1 kHz)	
MONO	0.6% (65 dBf input)
STEREO	0.7% (65 dBf input)
Signal to noise ratio (1 kHz, 75 kHz DEV.)	
MONO	75 dB (65 dBf input)
STEREO	68 dB (65 dBf input)
Stereo separation (1 kHz)	38 dB
Selectivity (±400 kHz)	70 dB
Frequency response	(30 Hz ~ 15kHz), +0.5 dB, -3.0 dB

AM tuner section

Tuning frequency range	
10 kHz step	530 kHz ~ 1,700 kHz
Usable sensitivity (30% mod., S/N 20 dB)	16 μV / (600 μV/m)
Signal to noise ratio (30% mod. 1 mV input)	50 dB

GENERAL

Power consumption	2.6 A
AC outlet	
SWITCHED	(total 150 W, 1.25 A max.)
Dimensions	
	W : 440 mm (17-5/16")
	H : 143 mm (5-5/8")
	D : 400 mm (15-3/4")
Weight (Net)	7.2 kg (15.8 lb)

Note:

Component and circuit are subject to modification to insure best operation under differing local conditions. This manual is based on Europe (E) standard, and provides information on regional circuit modification through use of alternate schematic diagrams, and information on regional component variations through use of parts list.

KENWOOD CORPORATION

14-6,Dogenzaka 1-chome, Shibuya-ku, Tokyo, 150-8501 Japan

KENWOOD SERVICE CORPORATION

P.O BOX 22745, 2201 East Dominguez St., Long Beach, CA 90801-5745, U.S.A.

KENWOOD ELECTRONICS CANADA INC.

6070 Kestrel Road, Mississauga, Ontario, Canada L5T 1S8

KENWOOD ELECTRONICS LATIN AMERICA S.A.

P.O BOX 55-2791, Piso 6 plaza Chase, Cl. 47 y Aquilino de la Guardia Panama, Republic de Panama

KENWOOD ELECTRONICS BRASIL LTDA.

Av. Moema, 170-17, Andar-Cobertura "B", Ed. Maximum Service Center, 04077-020 Moema, São Paulo-SP-Brasil

KENWOOD ELECTRONICS U.K. LIMITED

KENWOOD House, Dwight Road, Watford, Herts., WD1 8EB., United Kingdom

KENWOOD ELECTRONICS BELGIUM N.V.

Meachelsesteenweg 418, B-1930 Zaventem, Belgium

KENWOOD ELECTRONICS DEUTSCHLAND GMBH

Rembrücker Str. 15, 63150 Heusenstamm, Germany

KENWOOD ELECTRONICS FRANCE S.A.

13 Boulevard Ney, 75018 Paris, France

KENWOOD ELECTRONICS ITALIA S.p.A.

Via G. Sirtori, 7/9 20129, Milano, Italy

KENWOOD IBÉRICA S.A.

Bolivia, 239-08020 Barcelona, Spain

KENWOOD ELECTRONICS AUSTRALIA PTY. LTD.

(A.C.N. 001 499 074)
16 Giffnock Avenue, North Ryde, N.S.W. 2113, Australia

KENWOOD ELECTRONICS (HONG KONG) LTD.

Unit 3712-3724, Level 37, Tower 1, Metroplaza, 223 Hing Fong Road, Kwai Fong N.T., Hong Kong

KENWOOD ELECTRONICS GULF FZE

P.O.Box 61318, Jebel Ali, Dubai, U.A.E.

KENWOOD ELECTRONICS SINGAPORE PTE LTD.

No. 1 Genting Lane #02-02, KENWOOD Building, Singapore, 349544

KENWOOD ELECTRONICS (MALAYSIA) SDN BHD.

#4.01 Level 4, Wisma Academy Lot 4A, Jalan 19/1 46300 Petaling Jaya Selangor Darul Ehsan Malaysia

KENWOOD ELECTRONICS (THAILAND) CO., LTD.

2019 New Pechburi Road, Bangkapi, Huaykwang, Bangkok, 10320 Thailand