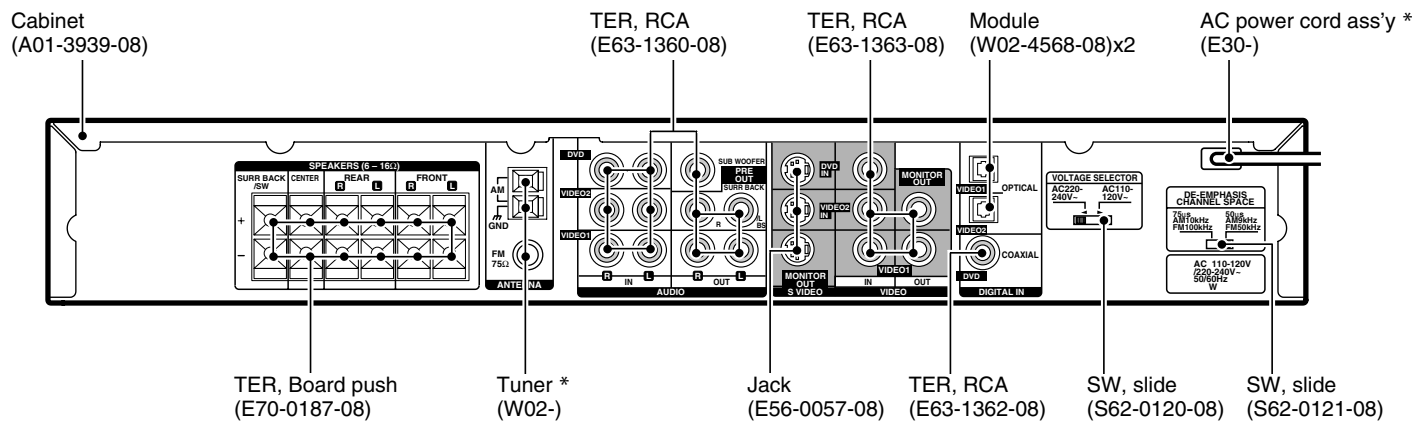
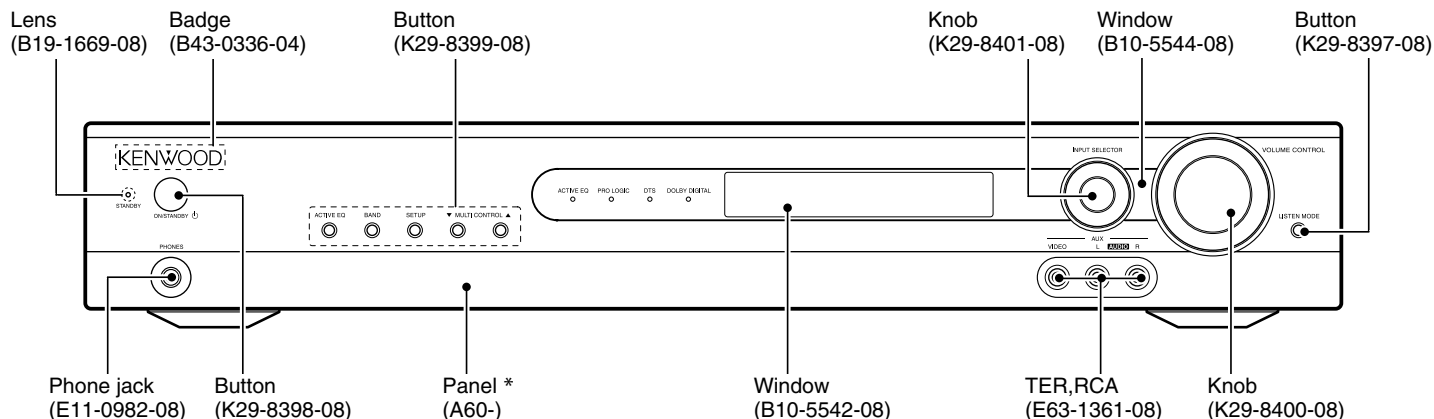


VRS-5100

SERVICE MANUAL



* Refer to parts list on page 20.

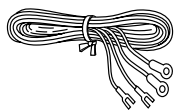


VRS-5100

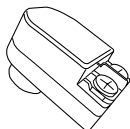
ACCESSORIES / CAUTIONS

Accessories

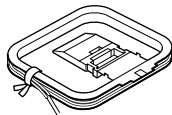
FM indoor antenna (1)
(T90-0913-08)



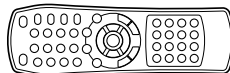
FM antenna adapter (1)
(T90-0914-08)



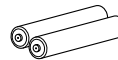
AM loop antenna (1)
(T90-0903-08)



Remote control unit (1)
(A70-1665-08) :
RC-R0516E (for the Europe)
(A70-1666-08) :
RC-R0516 (except for the Europe)



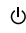
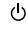
Batteries (R03/AAA) (2)



Cautions

Resetting the Microcomputer

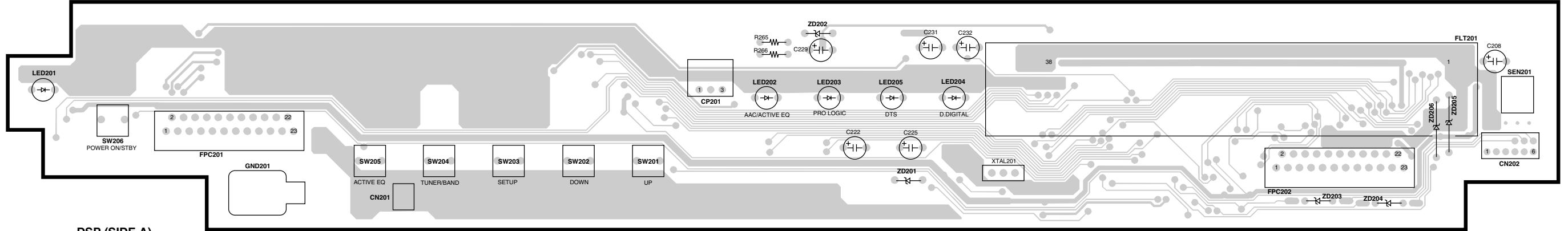
The microcomputer may malfunction (unit cannot be operated, or shows an erroneous display) if the power cord is unplugged while the power is ON, or due to some other external factor. If this happens, execute the following procedure to reset the microcomputer and return the unit to its normal operating condition.

Unplug the power cord after turn the ON/STANDBY  key OFF. Then, while holding down the ON/STANDBY  key, plug the power cord.

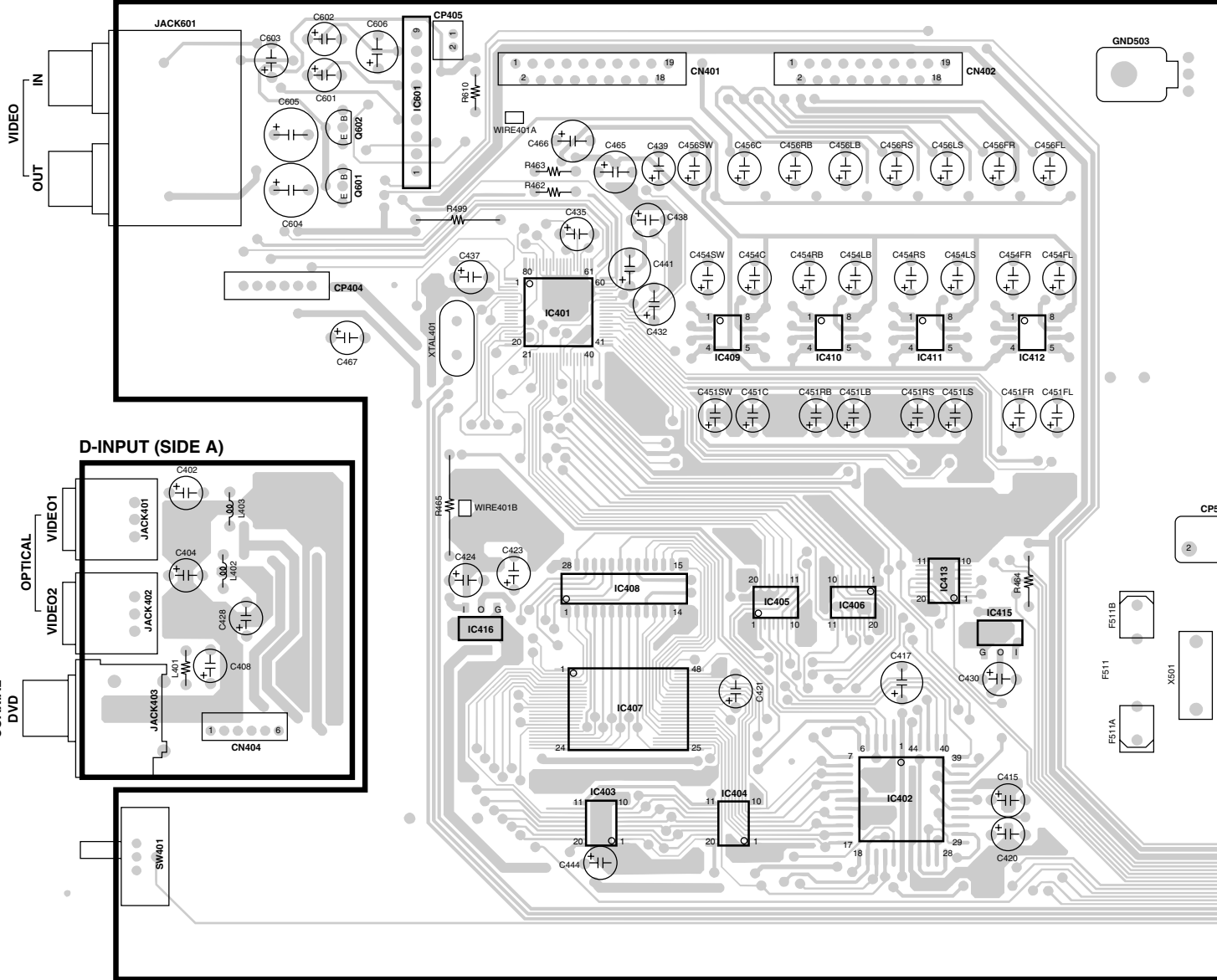
- Please note that resetting the microcomputer will clear the contents of the memory and return the unit to the state it was in when it left the factory

PC BOARD

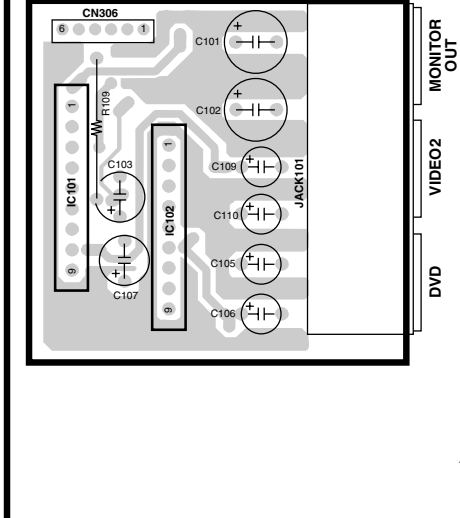
FRONT (SIDE A)



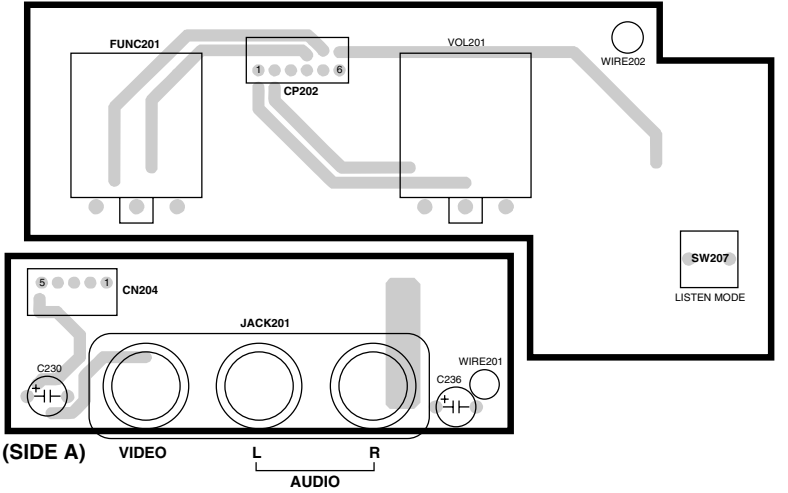
DSP (SIDE A)



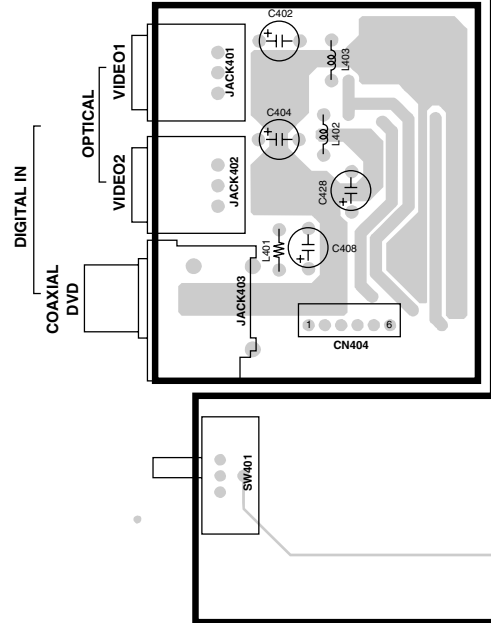
S-VIDEO (SIDE A)



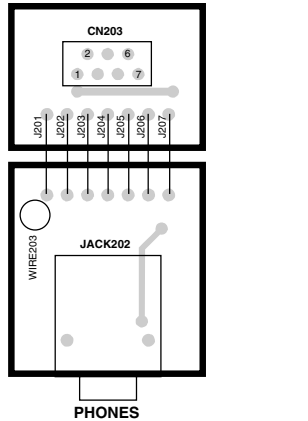
VOLUME & FUNCTION (SIDE A)



D-INPUT (SIDE A)

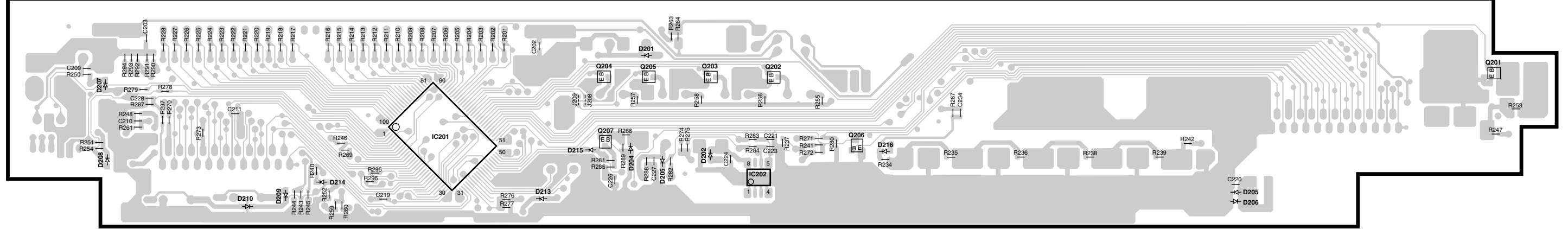


HEADPHONE (SIDE A)

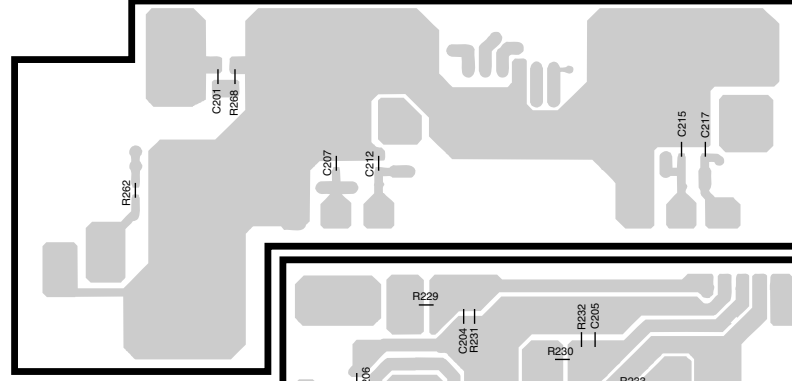


PC BOARD

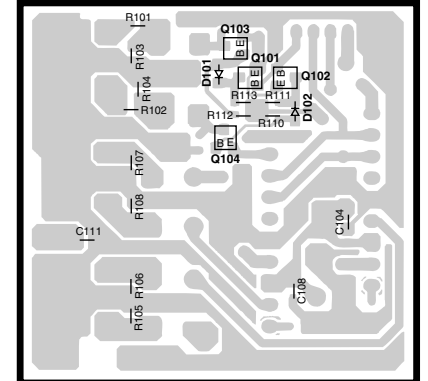
FRONT (SIDE B)



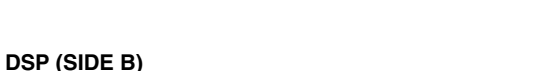
VOLUME & FUNCTION (SIDE B)



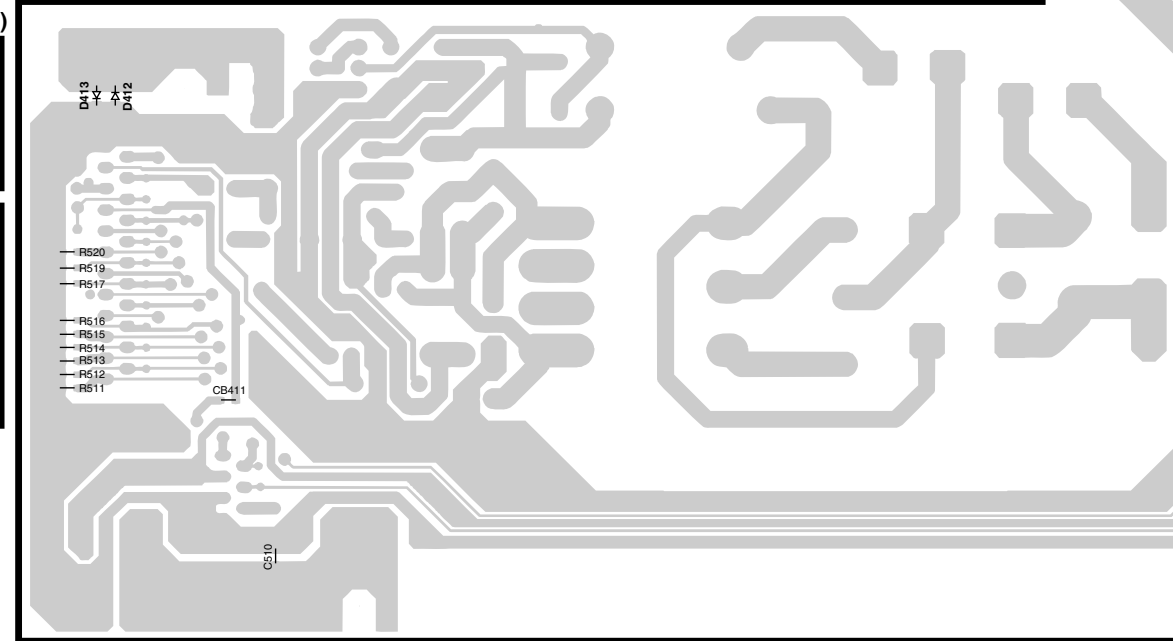
S-VIDEO (SIDE B)



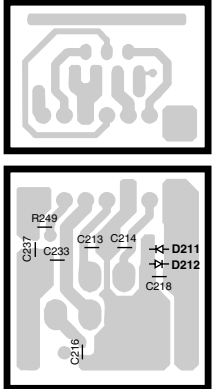
AUX (SIDE B)



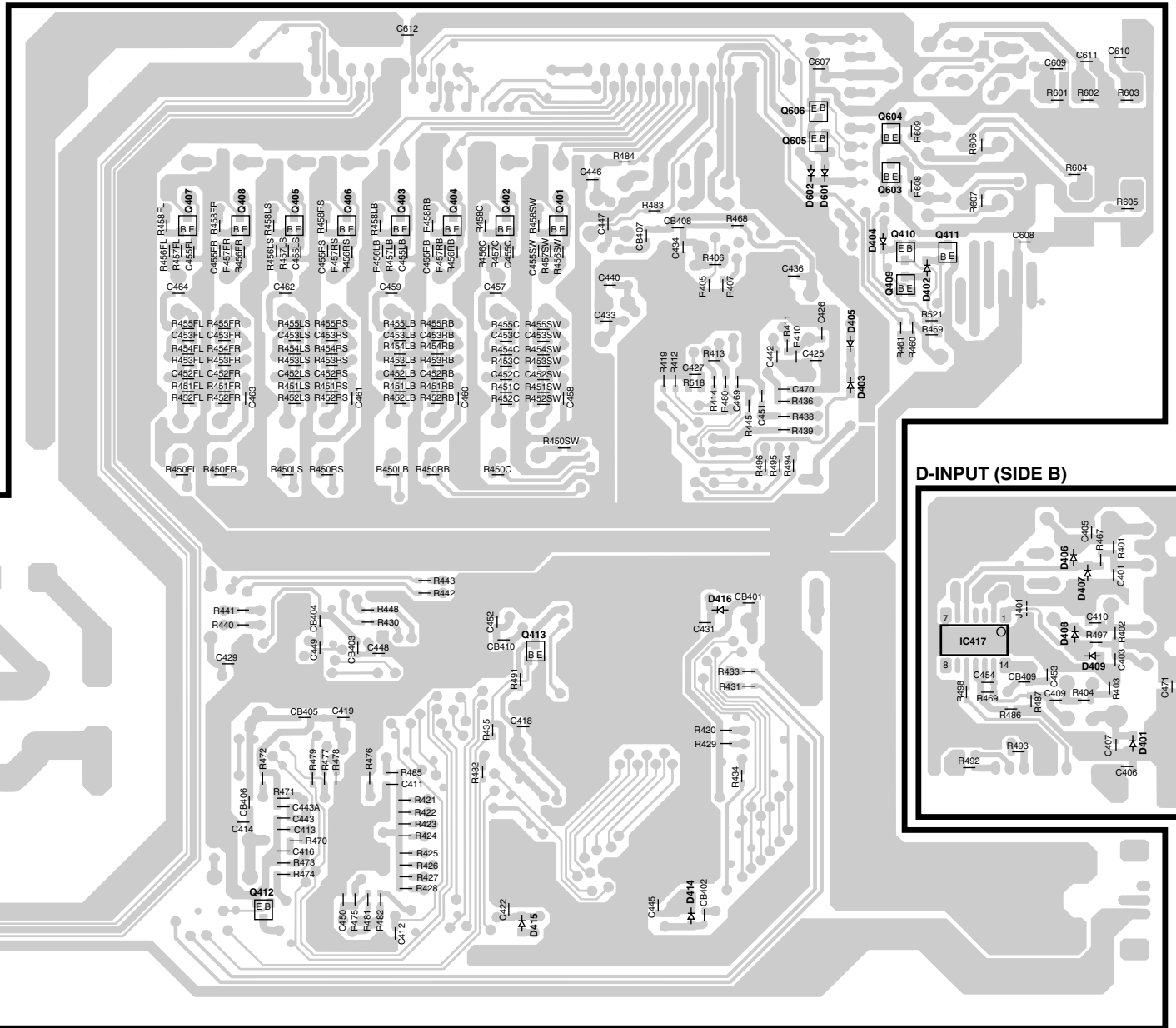
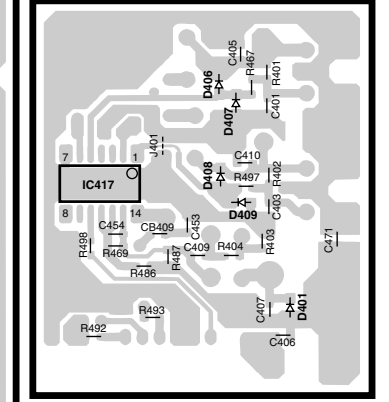
DSP (SIDE B)



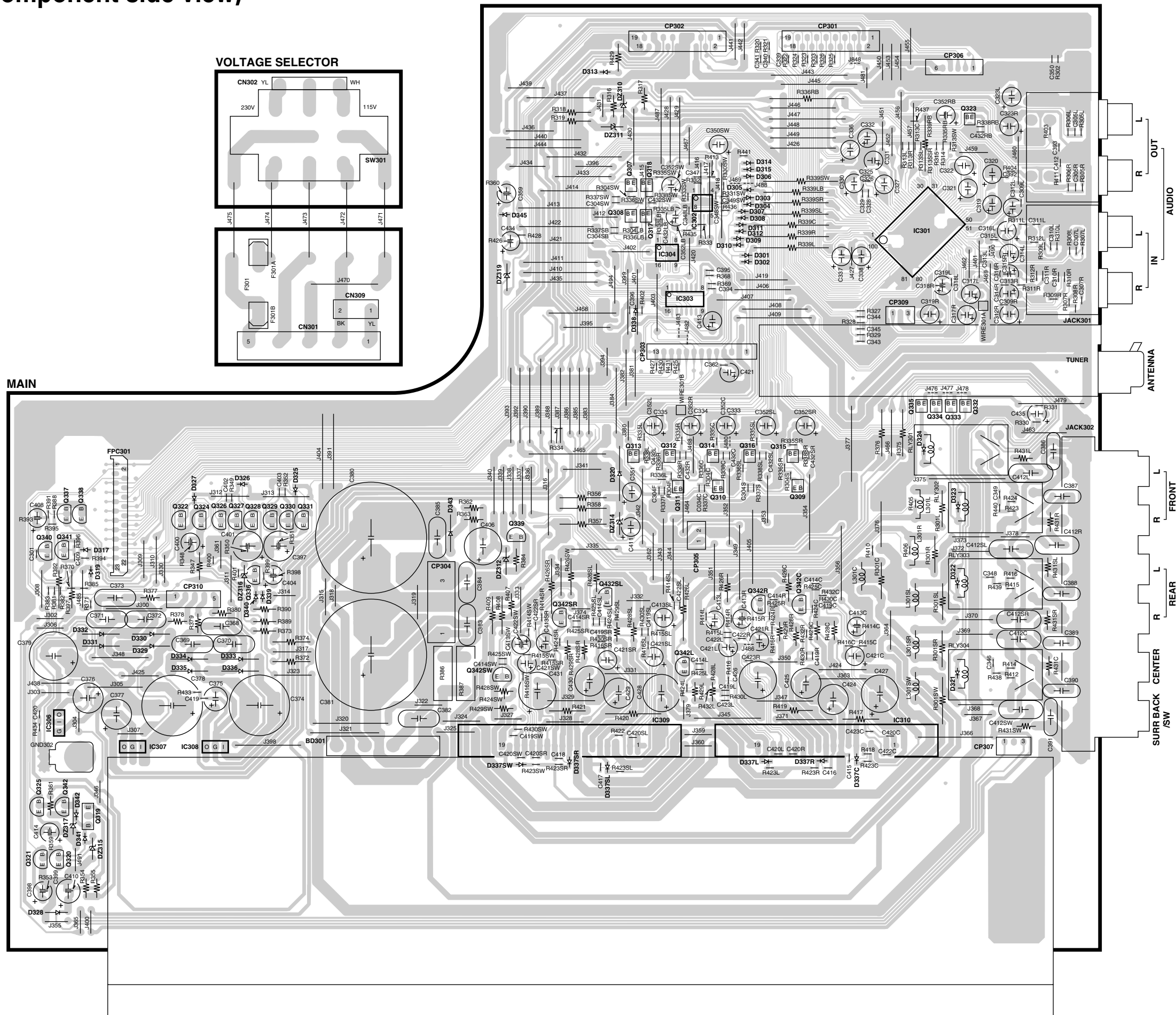
HEADPHONE (SIDE B)



D-INPUT (SIDE B)

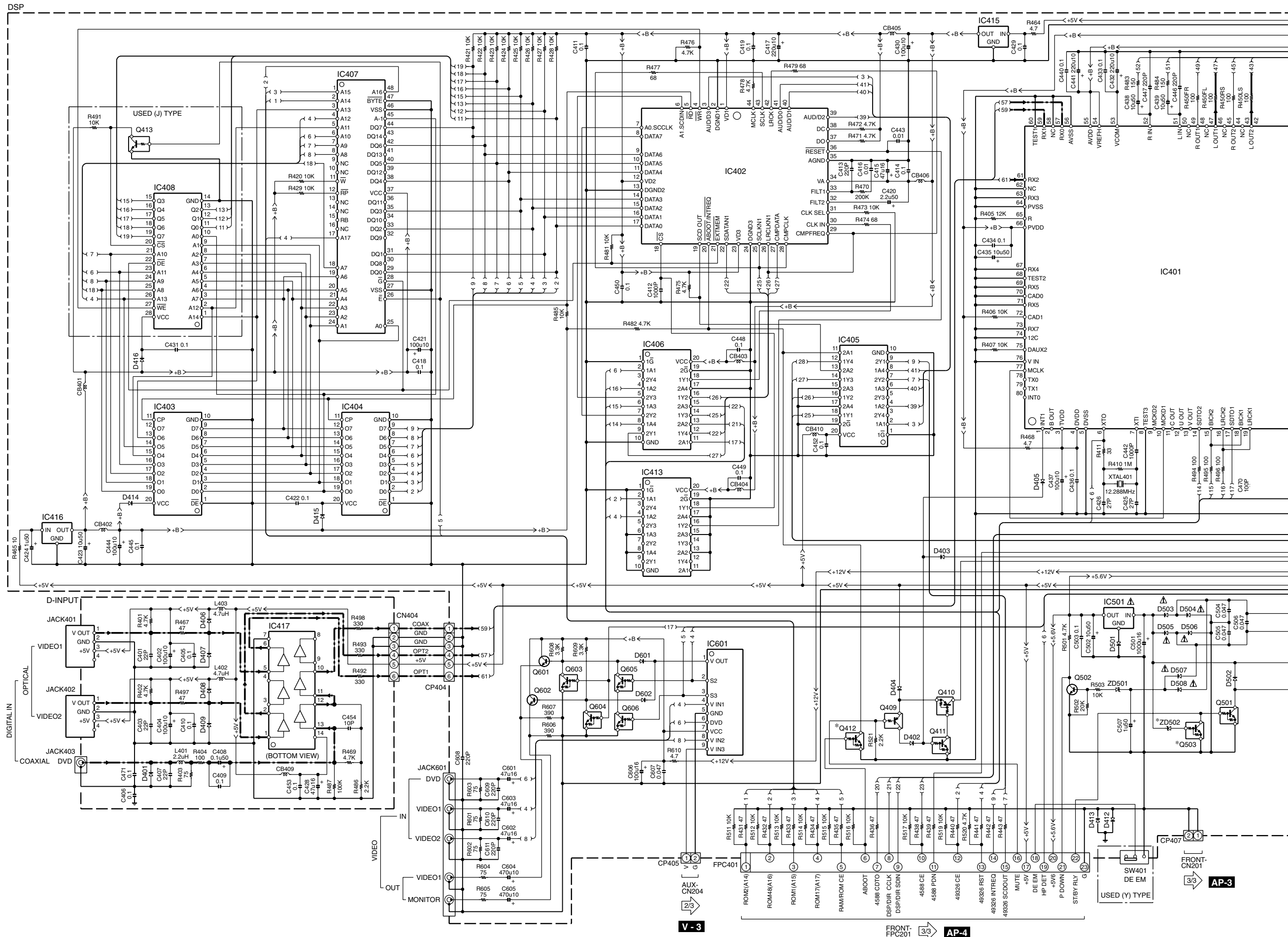


PC BOARD(Component side view)



Refer to the schematic diagram for the value of resistors and capacitors.

VRS-5100

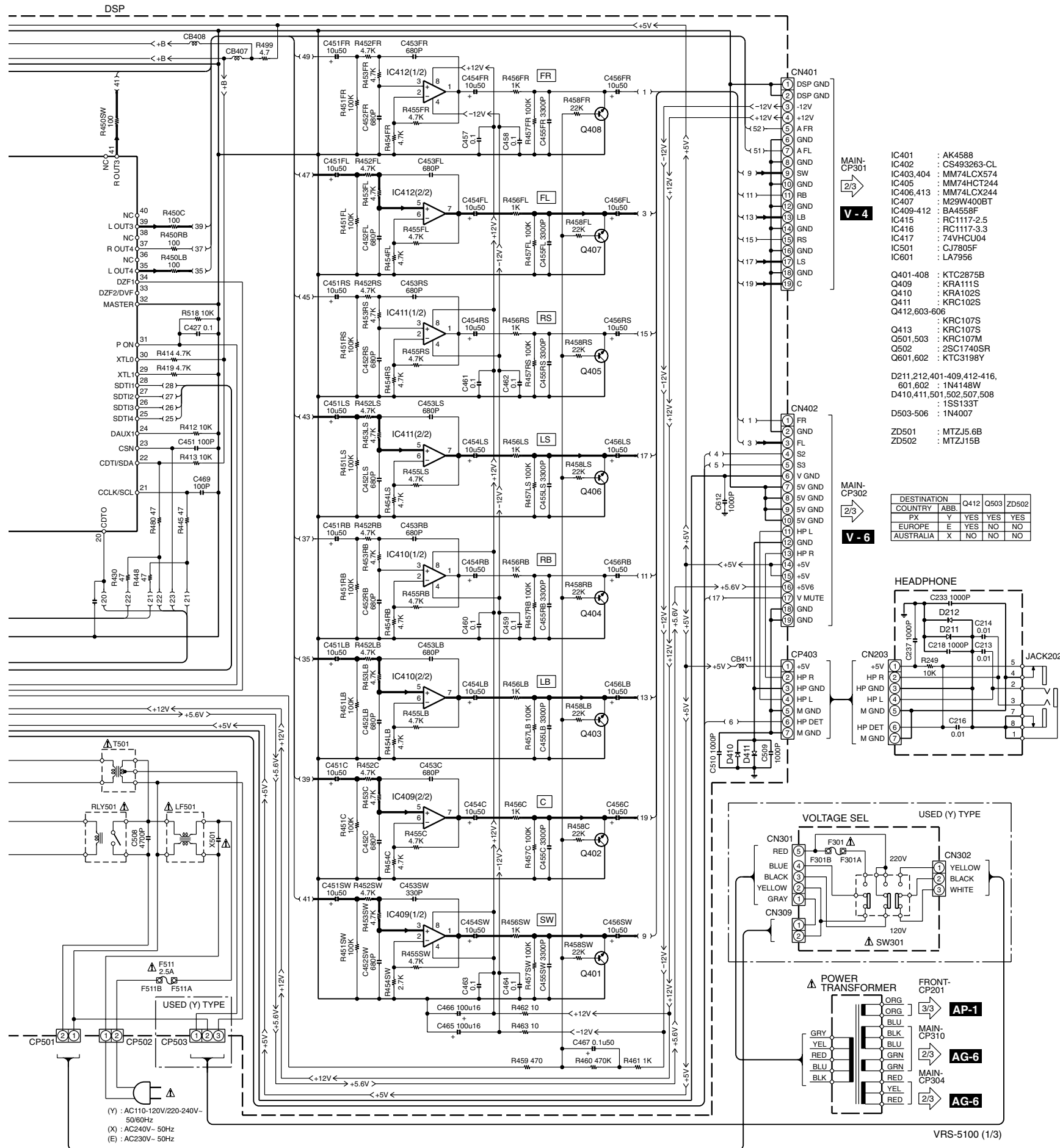


V-3

FRONT-FPC201

AP-4

AP-3



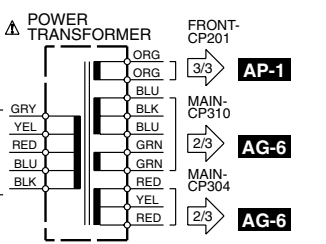
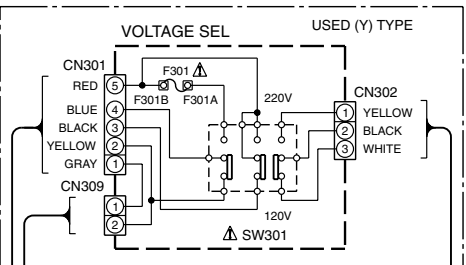
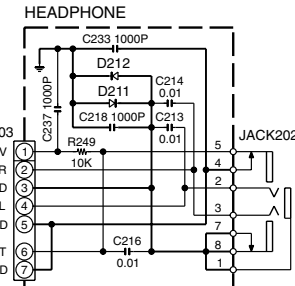
CAUTION: For continued safety, replace safety critical components only with manufacturer's recommended parts (refer to parts list). Δ indicates safety critical components. For continued protection against risk of fire, replace only with same type and rating fuse(s). To reduce the risk of electric shock, leakage-current or resistance measurements shall be carried out (exposed parts are acceptably insulated from the supply circuit) before the appliance is returned to the customer.

The DC voltage is an actual reading measured with a high impedance type voltmeter with no signal input. The measurement value may vary depending on the measuring instruments used or on the product.

- MAIN-CP301**
- IC401 : AK4588
 - IC402 : CS493263-CL
 - IC403,404 : MM74LCX574
 - IC405 : MM74HCX244
 - IC406,413 : MM74LCX244
 - IC407 : M29W400BT
 - IC409-412 : BA4558F
 - IC415 : RC1117-2.5
 - IC416 : RC1117-3.3
 - IC417 : 74VHC04
 - IC501 : CJ7805F
 - IC601 : LA7956
- Q401-408 : KTC2875B**
Q409 : KRA111S
Q410 : KRA102S
Q411 : KRC102S
Q412,603-606
Q413 : KRC107S
Q501,503 : KRC107M
Q502 : 2SC17405R
Q601,602 : KTC3198Y
- D211,212,401-409,412-416, 601,602 : 1N4148W**
D410,411,501,502,507,508 : 1SS133T
D503-506 : 1N4007
- ZD501 : MTZJ5.6B**
ZD502 : MTZJ15B

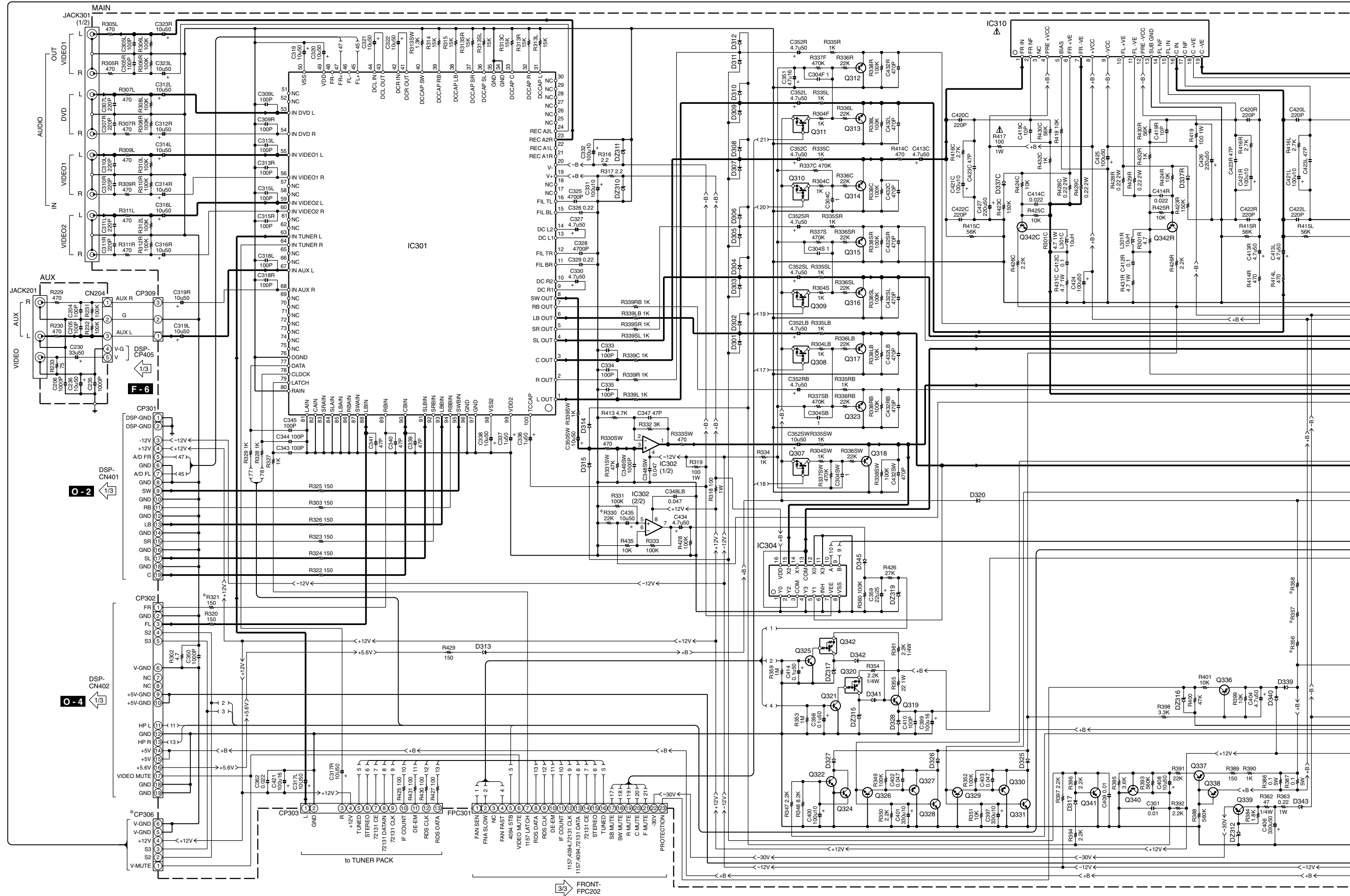
MAIN-CP302

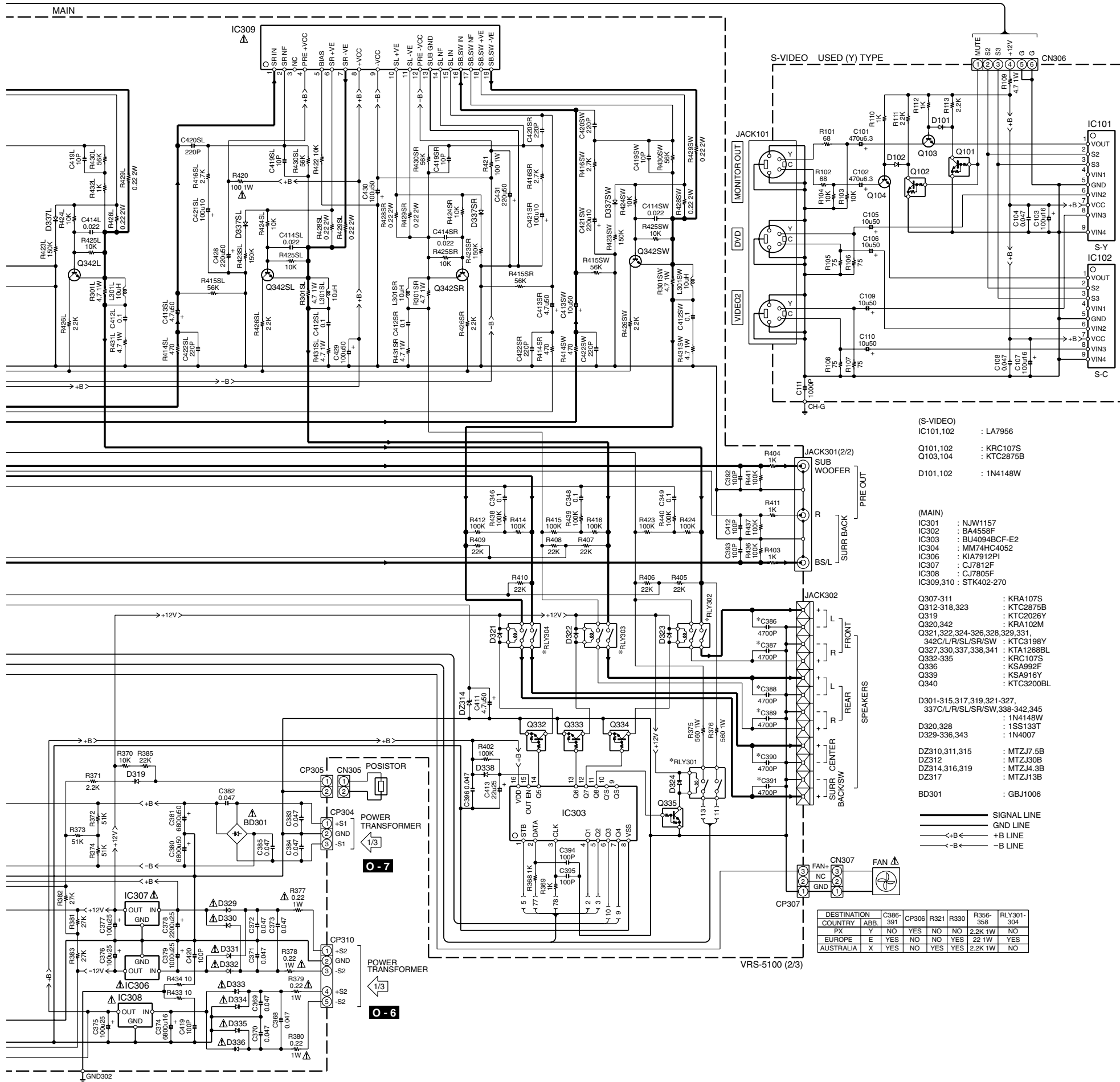
DESTINATION	COUNTRY	ABB.	Q412	Q503	ZD502
FX	Y	YES	YES	YES	YES
EUROPE	E	YES	NO	NO	NO
AUSTRALIA	X	NO	NO	NO	NO



(Y) : AC110-120V/220-240V-50/60Hz
 (X) : AC240V-50Hz
 (E) : AC230V-50Hz

VRS-5100





- (S-VIDEO)
- IC101,102 : LA7956
 - Q101,102 : KRC107S
 - Q103,104 : KTC2875B
 - D101,102 : 1N4148W
- (MAIN)
- IC301 : NJW1157
 - IC302 : BA4558F
 - IC303 : BU4094BCF-E2
 - IC304 : MM74HC4052
 - IC306 : KIA7312P1
 - IC307 : CJ7812F
 - IC308 : CJ7805F
 - IC309,310 : STK402-270
 - Q307-311 : KRA107S
 - Q312-318,323 : KTC2875B
 - Q319 : KTC2026Y
 - Q320,342 : KRA102M
 - Q321,322,324-326,328,329,331,342C/L/R/SL/SR/SW : KTC3198Y
 - Q327,330,337,338,341 : KTA1268BL
 - Q332-335 : KRC107S
 - Q336 : KSA982F
 - Q339 : KSA916Y
 - Q340 : KTC3200BL
 - D301-315,317,319,321-327,337C/L/R/SL/SR/SW,338-342,345 : 1N4148W
 - D320,328 : 1SS133T
 - D329-336,343 : 1N4007
 - DZ310,311,315 : MTZJ7.5B
 - DZ312 : MTZJ30B
 - DZ314,316,319 : MTZJ4.3B
 - DZ317 : MTZJ13B
 - BD301 : GBJ1006

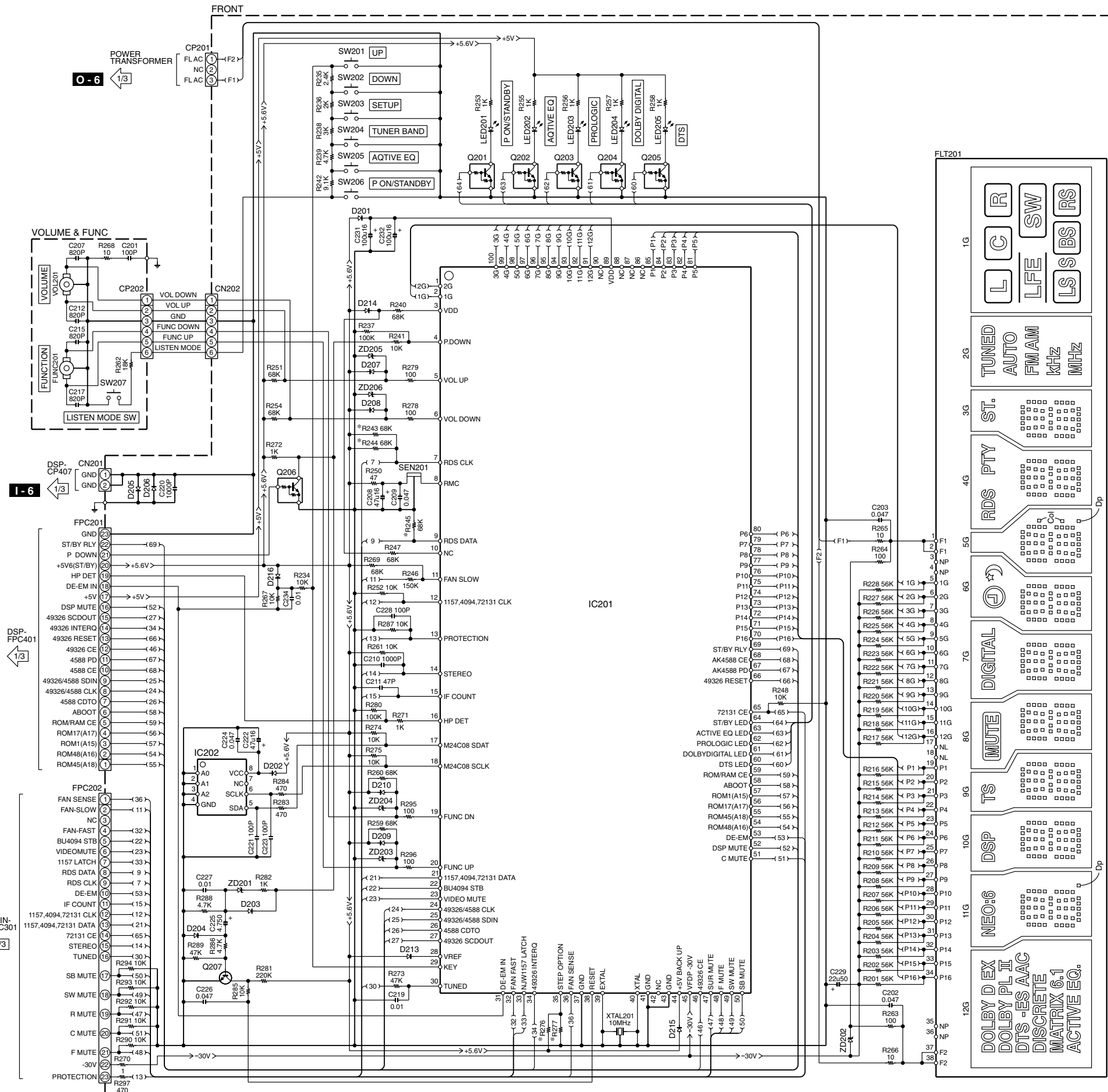
— SIGNAL LINE
 — GND LINE
 <-+B- - +B LINE
 <-B- -B LINE

DESTINATION	C386-391	CP306	R321	R330	R356-358	RLY301-304
COUNTRY	ABB	YES	NO	NO	2.2K 1W	NO
PX	Y	NO	YES	NO	22 1W	YES
EUROPE	E	YES	NO	NO	YES	22 1W
AUSTRALIA	X	YES	NO	YES	YES	2.2K 1W

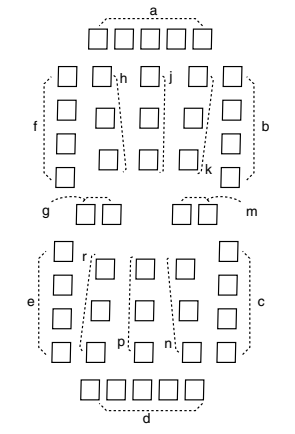
CAUTION: For continued safety, replace safety critical components only with manufacturer's recommended parts (refer to parts list). Δ indicates safety critical components. For continued protection against risk of fire, replace only with same type and rating fuse(s). To reduce the risk of electric shock, leakage-current or resistance measurements shall be carried out (exposed parts are acceptably insulated from the supply circuit) before the appliance is returned to the customer.

The DC voltage is an actual reading measured with a high impedance type voltmeter with no signal input. The measurement value may vary depending on the measuring instruments used or on the product.

VRS-5100

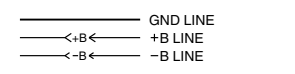


	12G	11G	10G	9G	8G	7G	6G	5G	4G	3G	2G	1G
P1	EX	a	a	a	a	a	a	a	a	a	—	R
P2	DOLBY D	b	b	b	b	b	b	b	b	b	—	(R)
P3	DOLBY PL	f	f	f	f	f	f	f	f	f	—	C
P4	I	j	j	j	j	j	j	j	j	j	—	(C)
P5	DTS	h	h	h	h	h	h	h	h	h	—	L
P6	-ES	k	k	k	k	k	k	k	k	k	—	(L)
P7	AAC	g	g	g	g	g	g	g	g	g	—	SW
P8	DISCRETE	m	m	m	m	m	m	m	m	m	—	(SW)
P9	MATRIX	r	r	r	r	r	r	r	r	r	—	LFE
P10	6.1	n	n	n	n	n	n	n	n	n	—	RS
P11	ACTIVE EQ.	p	p	p	p	p	p	p	p	p	TUNED	(RS)
P12	—	c	c	c	c	c	c	c	c	c	AUTO	BS
P13	—	e	e	e	e	e	e	e	e	e	AM	(BS)
P14	—	d	d	d	d	d	d	d	d	d	FM	S
P15	—	NEO:6	DSP	TS	(MUTE)	DIGITAL	(Co)	RDS	ST.	kHz	LS	
P16	—	Dp	—	—	—	—	—	Dp	PTY	—	MHz	(LS)



(3G-11G)

- IC201 : CXP82860-505Q
- IC202 : M24C08-WMN6
- Q201-206 : KRC102S
- Q207 : KTC3875S
- D201-210,213-216 : 1N4148W
- ZD201 : MTZJ3.3B
- ZD202 : MTZJ6.2B
- ZD203-206 : MTZJ5.1B
- LED201-205 : B30-2675-08

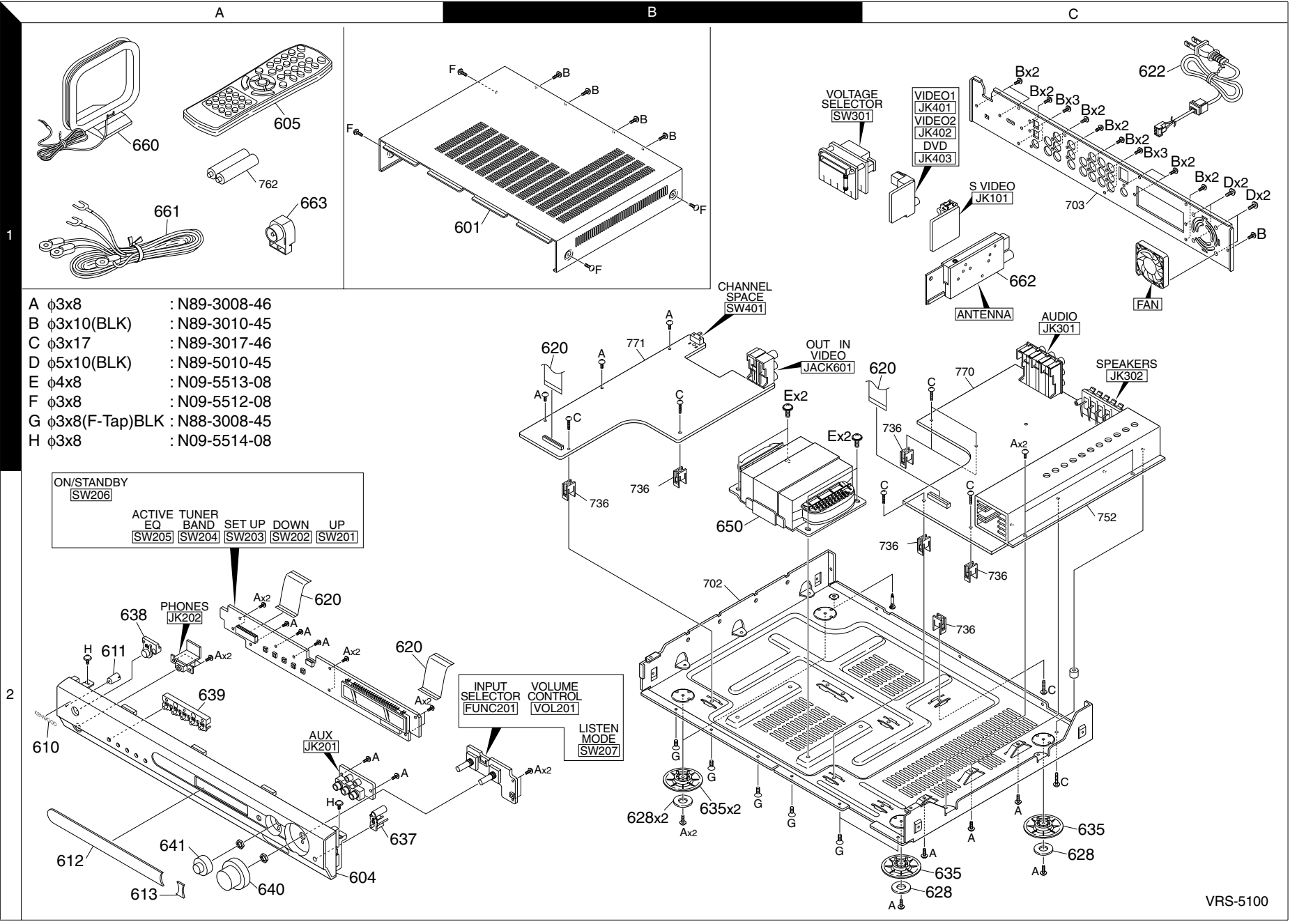


DESTINATION	COUNTRY	ABB.	R243	R276	R277
PX	Y	NO	15K	10K	
EUROPE	E	YES	5.1K	47K	
AUSTRALIA	X	NO	NO	47K	

CAUTION: For continued safety, replace safety critical components only with manufacturer's recommended parts (refer to parts list). Δ indicates safety critical components. For continued protection against risk of fire, replace only with same type and rating fuse(s). To reduce the risk of electric shock, leakage-current or resistance measurements shall be carried out (exposed parts are acceptably insulated from the supply circuit) before the appliance is returned to the customer.

The DC voltage is an actual reading measured with a high impedance type voltmeter with no signal input. The measurement value may vary depending on the measuring instruments used or on the product.

Parts with exploded numbers larger than 700 are not supplied.



- A ϕ 3x8 : N89-3008-46
- B ϕ 3x10(BLK) : N89-3010-45
- C ϕ 3x17 : N89-3017-46
- D ϕ 5x10(BLK) : N89-5010-45
- E ϕ 4x8 : N09-5513-08
- F ϕ 3x8 : N09-5512-08
- G ϕ 3x8(F-Tap)BLK : N88-3008-45
- H ϕ 3x8 : N09-5514-08

ON/STANDBY	[SW206]				
ACTIVE TUNER	EQ	BAND	SET UP	DOWN	UP
	[SW205]	[SW204]	[SW203]	[SW202]	[SW201]

INPUT SELECTOR	VOLUME CONTROL
[FUNC201]	[VOL201]
LISTEN MODE [SW207]	

EXPLODED VIEW

VRS-5100

VRS-5100

* New Parts

Parts without **Parts No.** are not supplied.Les articles non mentionnés dans le **Parts No.** ne sont pas fournis.Teile ohne **Parts No.** werden nicht geliefert.

①

Ref. No	Add-ress	New Parts	Parts No.	Description	Desti-nation	Re-marks
VRS-5100						
601	1B	*	A01-3939-08	CABINET 3000210456000		
604	2A	**	A60-2399-08	PANEL 3067211681000	E	
604	2A	**	A60-2401-08	PANEL 3067211681020	XY	
605	1A	**	A70-1665-08	REMOCON 8300470300010	E	
605	1A	**	A70-1666-08	REMOCON 8300470300020	XY	
-		*	B60-5473-08	INSTRUCTION MAN5707047420180		
-		*	B60-5474-08	INSTRUCTION MAN5707047420200	E	
610	2A	**	B43-0336-04	BADGE 5630000721010	E	
611	2A	**	B19-1669-08	LENS 3710210493000		
612	2A	**	B10-5542-08	WINDOW 5077211102000		
613	2A	*	B10-5544-08	WINDOW 5077211112000		
620	2A,1B	**	E35-3704-08	CABLE,FLAT CARDL.301700230020		
△ 622	1C	**	E30-7326-08	CORD ASSY L068000000210	Y	
△ 622	1C	**	E30-7327-08	CORD ASSY L068040230040	X	
△ 622	1C	**	E30-7328-08	CORD ASSY L068040270030	E	
△ FAN	1C	*	F09-0189-08	FAN,DC G720124500090	F	
628	2B,2C	*	G13-2526-08	CUSHION 4050210375000		
-		*	H10-7926-08	CUSHION,SNOW 6230210954000		
-		**	H50-4939-08	BOX,GIFT 6007210640000	E	
-		**	H50-4941-08	BOX,GIFT 6007210640020	XY	
635	2B,2C	*	J02-1568-08	FOOT 4000210241000		
637	2A	**	K29-8397-08	BUTTON 5097212261000		
638	2A	**	K29-8398-08	BUTTON 5097212271000		
639	2A	**	K29-8399-08	BUTTON 5097212281000		
640	2A	**	K29-8400-08	KNOB 5087210881000		
641	2A	**	K29-8401-08	KNOB 5087210891000		
△ 650	2B	*	L07-3295-08	POWER TRANS 8200960840010	E	
△ 650	2B	*	L07-3297-08	POWER TRANS 8200960840030	Y	
△ 650	2B	*	L07-3298-08	POWER TRANS 8200960840040	X	
660	1A	*	T90-0903-08	ANTENNA,LOOP E601016000000		
661	1A	*	T90-0913-08	ANTENNA,WIRE E605010010000		
662	1C	**	W02-4565-08	TUNER,FM/AM E903011200010	XY	
662	1C	**	W02-4567-08	TUNER,FM/AM E903114100050	E	
663	1A	*	T90-0914-08	ANTENNA ADAPTER		
MAIN						
C301			CK73GB1H103K	CHIP C 0.010UF K		
C304C			CK73GB1H105Z	CHIP C 1.0UF Z		
C304F			CK73GB1H105Z	CHIP C 1.0UF Z		
C304S			CK73GB1H105Z	CHIP C 1.0UF Z		
C304SB			CK73GB1H105Z	CHIP C 1.0UF Z		
C304SW			CK73GB1H105Z	CHIP C 1.0UF Z		
C305L			CK73GB1H101J	CHIP C 100PF J		
C305R			CK73GB1H101J	CHIP C 100PF J		
C307L			CK73GB1H221K	CHIP C 220PF K		
C307R			CK73GB1H221K	CHIP C 220PF K		
C309L			CK73GB1H101J	CHIP C 100PF J		
C309R			CK73GB1H101J	CHIP C 100PF J		
C310L			CK73GB1H221K	CHIP C 220PF K		
C310R			CK73GB1H221K	CHIP C 220PF K		
C311L			CK73GB1H221K	CHIP C 220PF K		

L : Scandinavia K : USA P : Canada R : Mexico C : China I : Malaysia

Y : PX(Far East,Hawaii) T : England E : Europe G : Germany V : China(Shanghai)

Y : AAFES(Europe) X : Australia Q : Russia H : Korea M : Other Areas △ indicates safety critical components.

* New Parts

Parts without **Parts No.** are not supplied.Les articles non mentionnés dans le **Parts No.** ne sont pas fournis.Teile ohne **Parts No.** werden nicht geliefert.

②

Ref. No	Add-ress	New Parts	Parts No.	Description	Desti-nation	Re-marks
C311R			CK73GB1H221K	CHIP C 220PF K		
C312L			CE04KW1H100M	ELECTRO 10UF 50WV		
C312R			CE04KW1H100M	ELECTRO 10UF 50WV		
C313L			CK73GB1H101J	CHIP C 100PF J		
C313R			CK73GB1H101J	CHIP C 100PF J		
C314L			CE04KW1H100M	ELECTRO 10UF 50WV		
C314R			CE04KW1H100M	ELECTRO 10UF 50WV		
C315L			CK73GB1H101J	CHIP C 100PF J		
C315R			CK73GB1H101J	CHIP C 100PF J		
C316L			CE04KW1H100M	ELECTRO 10UF 50WV		
C316R			CE04KW1H100M	ELECTRO 10UF 50WV		
C317L			CE04KW1H100M	ELECTRO 10UF 50WV		
C317R			CE04KW1H100M	ELECTRO 10UF 50WV		
C318L			CK73GB1H101J	CHIP C 100PF J		
C318R			CK73GB1H101J	CHIP C 100PF J		
C319			CE04KW1H100M	ELECTRO 10UF 50WV		
C319L			CE04KW1H100M	ELECTRO 10UF 50WV		
C319R			CE04KW1H100M	ELECTRO 10UF 50WV		
C320			CE04KW1H100M	ELECTRO 10UF 50WV		
C321			CE04KW1H100M	ELECTRO 10UF 50WV		
C322			CE04KW1H100M	ELECTRO 10UF 50WV		
C323L			CE04KW1H100M	ELECTRO 10UF 50WV		
C323R			CE04KW1H100M	ELECTRO 10UF 50WV		
C325			CK73GB1H472K	CHIP C 4700PF K		
C326			CK73GB1H224K	CHIP C 0.22UF K		
C327			CE04KW1H4R7M	ELECTRO 4.7UF 50WV		
C328			CK73GB1H472K	CHIP C 4700PF K		
C329			CK73GB1H224K	CHIP C 0.22UF K		
C330			CE04KW1H4R7M	ELECTRO 4.7UF 50WV		
C331,2			CE04KW1A101M	ELECTRO 100UF 10WV		
C333-5			CK73GB1H101J	CHIP C 100PF J		
C336			CE04KW1H010M	ELECTRO 1.0UF 50WV		
C337,338			CE04KW1H100M	ELECTRO 10UF 50WV		
C339-41			CC73GCH1H470J	CHIP C 47PF J		
C343-5			CK73GB1H101J	CHIP C 100PF J		
C346			CK73GB1H104K	CHIP C 0.10UF K		
C347			CC73GCH1H470J	CHIP C 47PF J		
C348			CK73GB1H104K	CHIP C 0.10UF K		
C348LB			CK73GB1H473K	CHIP C 0.047UF K		
C348SW			CK73GB1H473K	CHIP C 0.047UF K		
C349			CK73GB1H104K	CHIP C 0.10UF K		
C349SW			CK73GB1H102K	CHIP C 1000PF K		
C350			CK73GB1H102K	CHIP C 1000PF K		
C350SW			CE04KW1H100M	ELECTRO 10UF 50WV		
C351			CE04KW1C470M	ELECTRO 47UF 16WV		
C352C			CE04KW1H4R7M	ELECTRO 4.7UF 50WV		
C352L			CE04KW1H4R7M	ELECTRO 4.7UF 50WV		
C352LB			CE04KW1H4R7M	ELECTRO 4.7UF 50WV		
C352R			CE04KW1H4R7M	ELECTRO 4.7UF 50WV		
C352RB			CE04KW1H4R7M	ELECTRO 4.7UF 50WV		
C352SL			CE04KW1H4R7M	ELECTRO 4.7UF 50WV		
C352SR			CE04KW1H4R7M	ELECTRO 4.7UF 50WV		
C352SW			CE04KW1H100M	ELECTRO 10UF 50WV		
C359			CE04KW1E220M	ELECTRO 22UF 25WV		
C362			CK73GB1H223K	CHIP C 0.022UF K		

L : Scandinavia K : USA P : Canada R : Mexico C : China I : Malaysia

Y : PX(Far East,Hawaii) T : England E : Europe G : Germany V : China(Shanghai)

Y : AAFES(Europe) X : Australia Q : Russia H : Korea M : Other Areas △ indicates safety critical components.

* New Parts
 Parts without **Parts No.** are not supplied.
 Les articles non mentionnés dans le **Parts No.** ne sont pas fournis.
 Teile ohne **Parts No.** werden nicht geliefert.

3

Ref. No	Add-ress	New Parts	Parts No.	Description	Desti-nation	Re-marks
C368-73		*	C91-1677-08	FILM 0.047UF 100WV		
C374			CE04KW1C682M	ELECTRO 6800UF 16WV		
C375-7			CE04KW1E101M	ELECTRO 100UF 25WV		
C378			CE04KW1E222M	ELECTRO 2200UF 25WV		
C379			CE04KW1E102M	ELECTRO 1000UF 25WV		
C380,1			CE04KW1H682M	ELECTRO 6800UF 50WV		
C382-5		*	C91-1677-08	FILM 0.047UF 100WV	EX	
C386-91		*	C91-1677-08	FILM 0.047UF 100WV		
C392-5		*	CK73GB1H101J	CHIP C 100PF J		
C396		*	CK73GB1H473K	CHIP C 0.047UF K		
C397			CE04KW1A331M	ELECTRO 330UF 10WV		
C398			CE04KW1H0R1M	ELECTRO 0.1UF 50WV		
C399			CE04KW1C101M	ELECTRO 100UF 16WV		
C400			CE04KW1A101M	ELECTRO 100UF 10WV		
C401			CE04KW1A331M	ELECTRO 330UF 10WV		
C402,3			CK73GB1H473K	CHIP C 0.047UF K		
C404			CE04KW1H4R7M	ELECTRO 4.7UF 50WV		
C406			CE04KW1H331M	ELECTRO 330UF 50WV		
C408			CE04KW1H100M	ELECTRO 10UF 50WV		
C409			CK73GB1H103K	CHIP C 0.010UF K		
C410			CK73GB1H101J	CHIP C 100PF J		
C411			CE04KW1H4R7M	ELECTRO 4.7UF 50WV		
C412			CK73GB1H101J	CHIP C 100PF J		
C412C		*	C91-1678-08	FILM 0.1UF 100WV		
C412L		*	C91-1678-08	FILM 0.1UF 100WV		
C412R		*	C91-1678-08	FILM 0.1UF 100WV		
C412SL		*	C91-1678-08	FILM 0.1UF 100WV		
C412SR		*	C91-1678-08	FILM 0.1UF 100WV		
C412SW		*	C91-1678-08	FILM 0.1UF 100WV		
C413		*	CE04KW1E220M	ELECTRO 22UF 25WV		
C413C			CE04KW1H4R7M	ELECTRO 4.7UF 50WV		
C413L			CE04KW1H4R7M	ELECTRO 4.7UF 50WV		
C413R			CE04KW1H4R7M	ELECTRO 4.7UF 50WV		
C413SL			CE04KW1H4R7M	ELECTRO 4.7UF 50WV		
C413SR			CE04KW1H4R7M	ELECTRO 4.7UF 50WV		
C413SW			CE04KW1H100M	ELECTRO 10UF 50WV		
C414			CE04KW1H0R1M	ELECTRO 0.1UF 50WV		
C414C			CK73GB1H223K	CHIP C 0.022UF K		
C414L			CK73GB1H223K	CHIP C 0.022UF K		
C414R			CK73GB1H223K	CHIP C 0.022UF K		
C414SL			CK73GB1H223K	CHIP C 0.022UF K		
C414SR			CK73GB1H223K	CHIP C 0.022UF K		
C414SW			CK73GB1H223K	CHIP C 0.022UF K		
C419			CK73GB1H101J	CHIP C 100PF J		
C419C			CC73GCH1H100J	CHIP C 10PF J		
C419L			CC73GCH1H100J	CHIP C 10PF J		
C419R			CC73GCH1H100J	CHIP C 10PF J		
C419SL			CC73GCH1H100J	CHIP C 10PF J		
C419SR			CC73GCH1H100J	CHIP C 10PF J		
C419SW			CC73GCH1H100J	CHIP C 10PF J		
C420			CK73GB1H101J	CHIP C 100PF J		
C420C			CK73GB1H221K	CHIP C 220PF K		
C420L			CK73GB1H221K	CHIP C 220PF K		
C420R			CK73GB1H221K	CHIP C 220PF K		
C420SL			CK73GB1H221K	CHIP C 220PF K		

L : Scandinavia K : USA P : Canada R : Mexico C : China I : Malaysia
 Y : PX(Far East,Hawaii) T : England E : Europe G : Germany V : China(Shanghai)
 Y : AAFES(Europe) X : Australia Q : Russia H : Korea M : Other Areas Δ indicates safety critical components .

* New Parts
 Parts without **Parts No.** are not supplied.
 Les articles non mentionnés dans le **Parts No.** ne sont pas fournis.
 Teile ohne **Parts No.** werden nicht geliefert.

4

Ref. No	Add-ress	New Parts	Parts No.	Description	Desti-nation	Re-marks
C420SR			CK73GB1H221K	CHIP C 220PF K		
C420SW			CK73GB1H221K	CHIP C 220PF K		
C421			CE04KW1C101M	ELECTRO 100UF 16WV		
C421C			CE04KW1A101M	ELECTRO 100UF 10WV		
C421L			CE04KW1A101M	ELECTRO 100UF 10WV		
C421R			CE04KW1A101M	ELECTRO 100UF 10WV		
C421SL			CE04KW1A101M	ELECTRO 100UF 10WV		
C421SR			CE04KW1A101M	ELECTRO 100UF 10WV		
C421SW			CE04KW1A221M	ELECTRO 220UF 10WV		
C422C			CK73GB1H221K	CHIP C 220PF K		
C422L			CK73GB1H221K	CHIP C 220PF K		
C422R			CK73GB1H221K	CHIP C 220PF K		
C422SL			CK73GB1H221K	CHIP C 220PF K		
C422SR			CK73GB1H221K	CHIP C 220PF K		
C422SW			CK73GB1H221K	CHIP C 220PF K		
C423C			CC73GCH1H470J	CHIP C 47PF J		
C423L			CC73GCH1H470J	CHIP C 47PF J		
C423R			CC73GCH1H470J	CHIP C 47PF J		
C424			CE04KW1H101M	ELECTRO 100UF 50WV		
C425			CE04KW1H101M	ELECTRO 100UF 50WV		
C426			CE04KW1H221M	ELECTRO 220UF 50WV		
C427			CE04KW1H221M	ELECTRO 220UF 50WV		
C428			CE04KW1H221M	ELECTRO 220UF 50WV		
C429			CE04KW1H101M	ELECTRO 100UF 50WV		
C430			CE04KW1H101M	ELECTRO 100UF 50WV		
C431			CE04KW1H221M	ELECTRO 220UF 50WV		
C432C			CK73GB1H471K	CHIP C 470PF K		
C432L			CK73GB1H471K	CHIP C 470PF K		
C432LB			CK73GB1H471K	CHIP C 470PF K		
C432R			CK73GB1H471K	CHIP C 470PF K		
C432RB			CK73GB1H471K	CHIP C 470PF K		
C432SL			CK73GB1H471K	CHIP C 470PF K		
C432SR			CK73GB1H471K	CHIP C 470PF K		
C432SW			CK73GB1H471K	CHIP C 470PF K		
C434			CE04KW1H4R7M	ELECTRO 4.7UF 50WV		
C435			CE04KW1H100M	ELECTRO 10UF 50WV		
CP301.2		*	E41-1276-08	CN.FPC 1.25MM L131019000010		
FPC301		*	E41-1277-08	CN.FPC 1.25MM L131112300010		
JACK301		*	E63-1360-08	TER,RCA G6081201A070Y		
JACK302		*	E70-0187-08	TER,BOARD PUSH G5901201C0600		
Δ F301		*	F50-0257-08	FUSE GLASS TUBEN751225001110	Y	
L301C		*	L39-1630-08	COIL,FILTER-INDD330900001320		
L301L		*	L39-1630-08	COIL,FILTER-INDD330900001320		
L301R		*	L39-1630-08	COIL,FILTER-INDD330900001320		
L301SL		*	L39-1630-08	COIL,FILTER-INDD330900001320		
L301SR		*	L39-1630-08	COIL,FILTER-INDD330900001320		
L301SW		*	L39-1630-08	COIL,FILTER-INDD330900001320		
J476-8			RK73GB1J000J	CHIP R 0.0 J 1/16W		
J480			RK73GB1J000J	CHIP R 0.0 J 1/16W		
J482-4			RK73GB1J000J	CHIP R 0.0 J 1/16W		
J486			RK73GB1J000J	CHIP R 0.0 J 1/16W		
J488-90			RK73GB1J000J	CHIP R 0.0 J 1/16W		

L : Scandinavia K : USA P : Canada R : Mexico C : China I : Malaysia
 Y : PX(Far East,Hawaii) T : England E : Europe G : Germany V : China(Shanghai)
 Y : AAFES(Europe) X : Australia Q : Russia H : Korea M : Other Areas Δ indicates safety critical components .

PARTS LIST

VRS-5100

* New Parts

Parts without **Parts No.** are not supplied.

Les articles non mentionnés dans le **Parts No.** ne sont pas fournis.

Teile ohne **Parts No.** werden nicht geliefert.

7

Ref. No	Add-ress	New Parts	Parts No.	Description	Desti-nation	Re-marks
R403,4			RK73GB1J102J	CHIP R 1.0K	J	1/16W
R405,6			RK73GB1J223J	CHIP R 22K	J	1/16W
R410			RK73GB1J223J	CHIP R 22K	J	1/16W
R411			RK73GB1J102J	CHIP R 1.0K	J	1/16W
R412			RK73GB1J104J	CHIP R 100K	J	1/16W
R413			RK73GB1J472J	CHIP R 4.7K	J	1/16W
R414			RK73GB1J104J	CHIP R 100K	J	1/16W
R414C			RK73GB1J471J	CHIP R 470	J	1/16W
R414L			RK73GB1J471J	CHIP R 470	J	1/16W
R414R			RK73GB1J471J	CHIP R 470	J	1/16W
R414SL			RK73GB1J471J	CHIP R 470	J	1/16W
R414SR			RK73GB1J471J	CHIP R 470	J	1/16W
R414SW			RK73GB1J471J	CHIP R 470	J	1/16W
R415			RK73GB1J104J	CHIP R 100K	J	1/16W
R415C			RK73GB1J563J	CHIP R 56K	J	1/16W
R415L			RK73GB1J563J	CHIP R 56K	J	1/16W
R415R			RK73GB1J563J	CHIP R 56K	J	1/16W
R415SL			RK73GB1J563J	CHIP R 56K	J	1/16W
R415SR			RK73GB1J563J	CHIP R 56K	J	1/16W
R415SW			RK73GB1J563J	CHIP R 56K	J	1/16W
R416			RK73GB1J104J	CHIP R 100K	J	1/16W
R416C			RK73GB1J272J	CHIP R 2.7K	J	1/16W
R416L			RK73GB1J272J	CHIP R 2.7K	J	1/16W
R416R			RK73GB1J272J	CHIP R 2.7K	J	1/16W
R416SL			RK73GB1J272J	CHIP R 2.7K	J	1/16W
R416SR			RK73GB1J272J	CHIP R 2.7K	J	1/16W
R416SW			RK73GB1J272J	CHIP R 2.7K	J	1/16W
△ R417			RS14GB3A101J	FL-PROOF RS 100	J	1W
△ R418			RK73GB1J103J	CHIP R 10K	J	1/16W
△ R419-21			RS14GB3A101J	FL-PROOF RS 100	J	1W
R422			RK73GB1J103J	CHIP R 10K	J	1/16W
R423			RK73GB1J104J	CHIP R 100K	J	1/16W
R423C			RK73GB1J154J	CHIP R 150K	J	1/16W
R423L			RK73GB1J154J	CHIP R 150K	J	1/16W
R423R			RK73GB1J154J	CHIP R 150K	J	1/16W
R423SL			RK73GB1J154J	CHIP R 150K	J	1/16W
R423SR			RK73GB1J154J	CHIP R 150K	J	1/16W
R423SW			RK73GB1J154J	CHIP R 150K	J	1/16W
R424			RK73GB1J104J	CHIP R 100K	J	1/16W
R424C			RK73GB1J103J	CHIP R 10K	J	1/16W
R424L			RK73GB1J103J	CHIP R 10K	J	1/16W
R424R			RK73GB1J103J	CHIP R 10K	J	1/16W
R424SL			RK73GB1J103J	CHIP R 10K	J	1/16W
R424SR			RK73GB1J103J	CHIP R 10K	J	1/16W
R424SW			RK73GB1J103J	CHIP R 10K	J	1/16W
R425			RK73GB1J101J	CHIP R 100	J	1/16W
R425C			RK73GB1J103J	CHIP R 10K	J	1/16W
R425L			RK73GB1J103J	CHIP R 10K	J	1/16W
R425R			RK73GB1J103J	CHIP R 10K	J	1/16W
R425SL			RK73GB1J103J	CHIP R 10K	J	1/16W
R425SR			RK73GB1J103J	CHIP R 10K	J	1/16W
R425SW			RK73GB1J103J	CHIP R 10K	J	1/16W
R426			RK73GB1J273J	CHIP R 27K	J	1/16W
R427			RK73GB1J101J	CHIP R 100	J	1/16W
R428			RK73GB1J104J	CHIP R 100K	J	1/16W

L : Scandinavia K : USA P : Canada R : Mexico C : China I : Malaysia
Y : PX(Far East,Hawaii) T : England E : Europe G : Germany V : China(Shanghai)
Y : AAFES(Europe) X : Australia Q : Russia H : Korea M : Other Areas △ indicates safety critical components .

* New Parts

Parts without **Parts No.** are not supplied.

Les articles non mentionnés dans le **Parts No.** ne sont pas fournis.

Teile ohne **Parts No.** werden nicht geliefert.

8

Ref. No	Add-ress	New Parts	Parts No.	Description	Desti-nation	Re-marks
R428C		*	R92-4666-08	FL-PROOF RS 0.22	J	2W
R428L		*	R92-4666-08	FL-PROOF RS 0.22	J	2W
R428R		*	R92-4666-08	FL-PROOF RS 0.22	J	2W
R428SL		*	R92-4666-08	FL-PROOF RS 0.22	J	2W
R428SR		*	R92-4666-08	FL-PROOF RS 0.22	J	2W
R428SW		*	R92-4666-08	FL-PROOF RS 0.22	J	2W
R429C		*	R92-4666-08	FL-PROOF RS 0.22	J	2W
R429L		*	R92-4666-08	FL-PROOF RS 0.22	J	2W
R429R		*	R92-4666-08	FL-PROOF RS 0.22	J	2W
R429SL		*	R92-4666-08	FL-PROOF RS 0.22	J	2W
R429SR		*	R92-4666-08	FL-PROOF RS 0.22	J	2W
R429SW		*	R92-4666-08	FL-PROOF RS 0.22	J	2W
R430			RK73GB1J101J	CHIP R 100	J	1/16W
R430C			RK73GB1J563J	CHIP R 56K	J	1/16W
R430L			RK73GB1J563J	CHIP R 56K	J	1/16W
R430R			RK73GB1J563J	CHIP R 56K	J	1/16W
R430SL			RK73GB1J563J	CHIP R 56K	J	1/16W
R430SR			RK73GB1J563J	CHIP R 56K	J	1/16W
R430SW			RK73GB1J563J	CHIP R 56K	J	1/16W
R431			RK73GB1J101J	CHIP R 100	J	1/16W
R431C			RS14GB3A4R7J	FL-PROOF RS 4.7	J	1W
R431L			RS14GB3A4R7J	FL-PROOF RS 4.7	J	1W
R431R			RS14GB3A4R7J	FL-PROOF RS 4.7	J	1W
R431SL			RS14GB3A4R7J	FL-PROOF RS 4.7	J	1W
R431SR			RS14GB3A4R7J	FL-PROOF RS 4.7	J	1W
R431SW			RS14GB3A4R7J	FL-PROOF RS 4.7	J	1W
R432C			RK73GB1J102J	CHIP R 1.0K	J	1/16W
R432L			RK73GB1J102J	CHIP R 1.0K	J	1/16W
R432R			RK73GB1J102J	CHIP R 1.0K	J	1/16W
R433,4			RK73GB1J100J	CHIP R 10	J	1/16W
R435			RK73GB1J103J	CHIP R 10K	J	1/16W
R436-41			RK73GB1J104J	CHIP R 100K	J	1/16W
△ RLY301-4		*	S76-0142-08	RELAY G680120502040	E	
△ SW301		*	S62-0120-08	SW,SLIDE G060268320010	Y	
△ BD301		*	GBJ1006	D,RECTIFIER BRIK047100600010		
D301-17		*	1N4148W	D,SWITCHING CHIK005041480020		
D319		*	1N4148W	D,SWITCHING CHIK005041480020		
D320		*	1SS133T	D,SWITCHING K000013300520		
D321-7		*	1N4148W	D,SWITCHING CHIK005041480020		
D328		*	1SS133T	D,SWITCHING K000013300520		
△ D329-36		*	IN4007	D,SWITCHING K000400700520		
D337C		*	1N4148W	D,SWITCHING CHIK005041480020		
D337L		*	1N4148W	D,SWITCHING CHIK005041480020		
D337R		*	1N4148W	D,SWITCHING CHIK005041480020		
D337SL		*	1N4148W	D,SWITCHING CHIK005041480020		
D337SR		*	1N4148W	D,SWITCHING CHIK005041480020		
D337SW		*	1N4148W	D,SWITCHING CHIK005041480020		
D338-42		*	1N4148W	D,SWITCHING CHIK005041480020		
D343		*	IN4007	D,SWITCHING K000400700520		
D345		*	1N4148W	D,SWITCHING CHIK005041480020		
DZ310,1		*	MTZJ7.5B	D,ZENER K06007R544520		
DZ312		*	MTZJ30B	D,ZENER K06030R044520		
DZ314		*	MTZJ4.3B	D,ZENER K06004R344520		
DZ315		*	MTZJ7.5B	D,ZENER K06007R544520		

L : Scandinavia K : USA P : Canada R : Mexico C : China I : Malaysia
Y : PX(Far East,Hawaii) T : England E : Europe G : Germany V : China(Shanghai)
Y : AAFES(Europe) X : Australia Q : Russia H : Korea M : Other Areas △ indicates safety critical components .

PARTS LIST

VRS-5100

VRS-5100

PARTS LIST

* New Parts
 Parts without **Parts No.** are not supplied.
 Les articles non mentionnes dans le **Parts No.** ne sont pas fournis.
 Teile ohne **Parts No.** werden nicht geliefert.

* New Parts
 Parts without **Parts No.** are not supplied.
 Les articles non mentionnes dans le **Parts No.** ne sont pas fournis.
 Teile ohne **Parts No.** werden nicht geliefert.

Ref. No	Address	New Parts	Parts No.	Description	Destination	Remarks
DZ316			MTZJ4.3B	D.ZENER K06004R344520		
DZ317			MTZJ13B	D.ZENER K06013R044520		
DZ319			MTZJ4.3B	D.ZENER K06004R344520		
IC301		*	NJW1157	IC.ELECT VR J084115700010		
IC302		*	BA4558F	IC(OP AMP X2) J121455800140		
IC303		*	BU4094BCF-E2	IC(8-STAGE SHIFT/STORE REGISTE		
IC304		*	MM74HC4052	IC.LOGIC J040744052040		
IC306		*	KIA7912PI	IC(ANALOGUE IC)J126791200060		
IC307		*	CJ7812F	IC.LINEAR-REGULJ126781200220		
IC308		*	CJ7805F	IC.LINEAR-REGULJ126780500400		
IC309,10		*	STK402-270	IC.LINEAR POWERJ122402270010		
POSISTOR		*	P43T8D100BW70	POSISTOR F320550001070		
Q307-11		*	KRA107S	SEMI.CHIP TR/PNJ5200107S0050		
Q312-8		*	KTC2875B	SEMI.CHIP TR/NPJ5222875B0010		
Q319		*	KTC2026Y	SEMI,TR/GE NPN J5032026Y0010		
Q320			KRA102M	SEMI,BRT/PNP RAJ6002202M0010		
Q321,2			KTC3198Y	SEMI,TR/GE NPN J5023198Y0000		
Q323		*	KTC2875B	SEMI.CHIP TR/NPJ5222875B0010		
Q324-6		*	KTC3198Y	SEMI,TR/GE NPN J5023198Y0000		
Q327		*	KTA1268BL	SEMI,TR/GE PNP J5001268B0050		
Q328,9		*	KTC3198Y	SEMI,TR/GE NPN J5023198Y0000		
Q330		*	KTA1268BL	SEMI,TR/GE PNP J5001268B0050		
Q331		*	KTC3198Y	SEMI,TR/GE NPN J5023198Y0000		
Q332-5		*	KRC107S	SEMI.CHIP TR/NPJ522107S00210		
Q336		*	KSA992F	SEMI,TR/GE PNP J5000992F0050		
Q337,8		*	KTA1268BL	SEMI,TR/GE PNP J5001268B0050		
Q339		*	KSA916Y	SEMI,TR/GE PNP J5000916Y0050		
Q340		*	KTC3200BL	SEMI,TR/GE NPN J5023200B0050		
Q341		*	KTA1268BL	SEMI,TR/GE PNP J5001268B0050		
Q342		*	KRA102M	SEMI,BRT/PNP RAJ6002202M0010		
Q342C			KTC3198Y	SEMI,TR/GE NPN J5023198Y0000		
Q342L			KTC3198Y	SEMI,TR/GE NPN J5023198Y0000		
Q342R			KTC3198Y	SEMI,TR/GE NPN J5023198Y0000		
Q342SL			KTC3198Y	SEMI,TR/GE NPN J5023198Y0000		
Q342SR			KTC3198Y	SEMI,TR/GE NPN J5023198Y0000		
Q342SW			KTC3198Y	SEMI,TR/GE NPN J5023198Y0000		
FRONT						
FLT201		*	HNA-12SM54T	DISPLAY,FLT K5301254000010		
LED201-5		*	B30-2675-08	LED,ROUND K500032000130		
C101,2			CE04KW0J471M	ELECTRO 470UF 6.3WV	Y	
C103			CE04KW1C101M	ELECTRO 100UF 16WV	Y	
C104			CK73GB1H473K	CHIP C 0.047UF K	Y	
C105,6			CE04KW1H100M	ELECTRO 10UF 50WV	Y	
C107			CE04KW1C101M	ELECTRO 100UF 16WV	Y	
C108			CK73GB1H473K	CHIP C 0.047UF K	Y	
C109,10			CE04KW1H100M	ELECTRO 10UF 50WV	Y	
C111			CK73GB1H102K	CHIP C 1000PF K	Y	
C201			CK73GB1H101J	CHIP C 100PF J		
C202,3			CK73GB1H473K	CHIP C 0.047UF K		
C204,5			CK73GB1H101J	CHIP C 100PF J		
C206,7			CK73GB1H102K	CHIP C 1000PF K		
C208			CE04KW1C470M	ELECTRO 47UF 16WV		
C209			CK73GB1H473K	CHIP C 0.047UF K		
C210			CK73GB1H102K	CHIP C 1000PF K		

Ref. No	Address	New Parts	Parts No.	Description	Destination	Remarks
C211			CC73GCH1H470J	CHIP C 47PF J		
C212			CK73GB1H821K	CHIP C 820PF K		
C213,4			CK73GB1H103K	CHIP C 0.010UF K		
C215			CK73GB1H821K	CHIP C 820PF K		
C216			CK73GB1H103K	CHIP C 0.010UF K		
C217			CK73GB1H821K	CHIP C 820PF K		
C218			CK73GB1H102K	CHIP C 1000PF K		
C219			CK73GB1H103K	CHIP C 0.010UF K		
C220			CK73GB1H102K	CHIP C 1000PF K		
C221			CK73GB1H101J	CHIP C 100PF J		
C222			CE04KW1C470M	ELECTRO 47UF 16WV		
C223			CK73GB1H101J	CHIP C 100PF J		
C224			CK73GB1H473K	CHIP C 0.047UF K		
C225			CE04KW1H4R7M	ELECTRO 4.7UF 50WV		
C226			CK73GB1H473K	CHIP C 0.047UF K		
C227			CK73GB1H103K	CHIP C 0.010UF K		
C228			CK73GB1H101J	CHIP C 100PF J		
C229			CE04KW1H220M	ELECTRO 22UF 50WV		
C230			CE04KW1H330M	ELECTRO 33UF 50WV		
C231,2			CE04KW1C101M	ELECTRO 100UF 16WV		
C233			CK73GB1H102K	CHIP C 1000PF K		
C234			CK73GB1H103K	CHIP C 0.010UF K		
C235			CK73GB1H102K	CHIP C 1000PF K		
C236			CE04KW1H100M	ELECTRO 10UF 50WV		
C237			CK73GB1H102K	CHIP C 1000PF K		
C401			CC73GCH1H220J	CHIP C 22PF J		
C402			CE04KW1A101M	ELECTRO 100UF 10WV		
C403			CC73GCH1H220J	CHIP C 22PF J		
C404			CE04KW1A101M	ELECTRO 100UF 10WV		
C405,6			CK73GB1H104K	CHIP C 0.10UF K		
C407			CC73GCH1H220J	CHIP C 22PF J		
C408			CE04KW1H0R1M	ELECTRO 0.1UF 50WV		
C409-11			CK73GB1H104K	CHIP C 0.10UF K		
C412			CK73GB1H102K	CHIP C 1000PF K		
C413			CK73GB1H221K	CHIP C 220PF K		
C414			CK73GB1H104K	CHIP C 0.10UF K		
C415			CE04KW1C470M	ELECTRO 47UF 16WV		
C416			CK73GB1H103K	CHIP C 0.010UF K		
C417			CE04KW1A221M	ELECTRO 220UF 10WV		
C418,9			CK73GB1H104K	CHIP C 0.10UF K		
C420			CE04KW1H2R2M	ELECTRO 2.2UF 50WV		
C421			CE04KW1A101M	ELECTRO 100UF 10WV		
C422			CK73GB1H104K	CHIP C 0.10UF K		
C423			CE04KW1H100M	ELECTRO 10UF 50WV		
C424			CE04KW1H010M	ELECTRO 1.0UF 50WV		
C425,6			CC73GCH1H270J	CHIP C 27PF J		
C427			CK73GB1H104K	CHIP C 0.10UF K		
C428			CE04KW1C470M	ELECTRO 47UF 16WV		
C429			CK73GB1H104K	CHIP C 0.10UF K		
C430			CE04KW1A101M	ELECTRO 100UF 10WV		
C431			CK73GB1H104K	CHIP C 0.10UF K		
C432			CE04KW1A221M	ELECTRO 220UF 10WV		
C433,4			CK73GB1H104K	CHIP C 0.10UF K		
C435			CE04KW1H100M	ELECTRO 10UF 50WV		
C436			CK73GB1H104K	CHIP C 0.10UF K		

L : Scandinavia K : USA P : Canada R : Mexico C : China I : Malaysia
 Y : PX(Far East,Hawaii) T : England E : Europe G : Germany V : China(Shanghai)
 Y : AAFES(Europe) X : Australia Q : Russia H : Korea M : Other Areas Δ indicates safety critical components .

L : Scandinavia K : USA P : Canada R : Mexico C : China I : Malaysia
 Y : PX(Far East,Hawaii) T : England E : Europe G : Germany V : China(Shanghai)
 Y : AAFES(Europe) X : Australia Q : Russia H : Korea M : Other Areas Δ indicates safety critical components .

* New Parts
Parts without **Parts No.** are not supplied.
Les articles non mentionnes dans le **Parts No.** ne sont pas fournis.
Teile ohne **Parts No.** werden nicht geliefert.

15

Ref. No	Add-ress	New Parts	Parts No.	Description	Desti-nation	Re-marks	
R454LS R454RB R454RS R454SW R455C			RK73GB1J472J RK73GB1J472J RK73GB1J472J RK73GB1J272J RK73GB1J472J	CHIP R CHIP R CHIP R CHIP R CHIP R	4.7K 4.7K 4.7K 2.7K 4.7K	J J J J J	1/16W 1/16W 1/16W 1/16W 1/16W
R455FL R455FR R455LB R455LS R455RB			RK73GB1J472J RK73GB1J472J RK73GB1J472J RK73GB1J472J RK73GB1J472J	CHIP R CHIP R CHIP R CHIP R CHIP R	4.7K 4.7K 4.7K 4.7K 4.7K	J J J J J	1/16W 1/16W 1/16W 1/16W 1/16W
R455RS R455SW R456C R456FL R456FR			RK73GB1J472J RK73GB1J472J RK73GB1J102J RK73GB1J102J RK73GB1J102J	CHIP R CHIP R CHIP R CHIP R CHIP R	4.7K 4.7K 1.0K 1.0K 1.0K	J J J J J	1/16W 1/16W 1/16W 1/16W 1/16W
R456LB R456LS R456RB R456RS R456SW			RK73GB1J102J RK73GB1J102J RK73GB1J102J RK73GB1J102J RK73GB1J102J	CHIP R CHIP R CHIP R CHIP R CHIP R	1.0K 1.0K 1.0K 1.0K 1.0K	J J J J J	1/16W 1/16W 1/16W 1/16W 1/16W
R457C R457FL R457FR R457LB R457LS			RK73GB1J104J RK73GB1J104J RK73GB1J104J RK73GB1J104J RK73GB1J104J	CHIP R CHIP R CHIP R CHIP R CHIP R	100K 100K 100K 100K 100K	J J J J J	1/16W 1/16W 1/16W 1/16W 1/16W
R457RB R457RS R457SW R458C R458FL			RK73GB1J104J RK73GB1J104J RK73GB1J104J RK73GB1J223J RK73GB1J223J	CHIP R CHIP R CHIP R CHIP R CHIP R	100K 100K 100K 22K 22K	J J J J J	1/16W 1/16W 1/16W 1/16W 1/16W
R458FR R458LB R458LS R458RB R458RS			RK73GB1J223J RK73GB1J223J RK73GB1J223J RK73GB1J223J RK73GB1J223J	CHIP R CHIP R CHIP R CHIP R CHIP R	22K 22K 22K 22K 22K	J J J J J	1/16W 1/16W 1/16W 1/16W 1/16W
R458SW R459 R460 R461 R467			RK73GB1J223J RK73GB1J471J RK73GB1J474J RK73GB1J102J RK73GB1J470J	CHIP R CHIP R CHIP R CHIP R CHIP R	22K 470 470K 1.0K 47	J J J J J	1/16W 1/16W 1/16W 1/16W 1/16W
R468 R469 R470 R471,2 R473			RK73GB1J477J RK73GB1J472J RK73GB1J204J RK73GB1J472J RK73GB1J103J	CHIP R CHIP R CHIP R CHIP R CHIP R	4.7 4.7K 200K 4.7K 10K	J J J J J	1/16W 1/16W 1/16W 1/16W 1/16W
R474 R475,6 R477 R478 R479			RK73GB1J680J RK73GB1J472J RK73GB1J680J RK73GB1J472J RK73GB1J680J	CHIP R CHIP R CHIP R CHIP R CHIP R	68 4.7K 68 4.7K 68	J J J J J	1/16W 1/16W 1/16W 1/16W 1/16W
R480 R481 R482 R483,4 R485			RK73GB1J470J RK73GB1J103J RK73GB1J472J RK73GB1J151J RK73GB1J103J	CHIP R CHIP R CHIP R CHIP R CHIP R	47 10K 4.7K 150 10K	J J J J J	1/16W 1/16W 1/16W 1/16W 1/16W

L : Scandinavia
Y : PX(Far East,Hawaii)
Y : AAFES(Europe)

K : USA
T : England
X : Australia

P : Canada
E : Europe
Q : Russia

R : Mexico
G : Germany
H : Korea

C : China
V : China(Shanghai)
M : Other Areas

I : Malaysia

Δ indicates safety critical components .

* New Parts
Parts without **Parts No.** are not supplied.
Les articles non mentionnes dans le **Parts No.** ne sont pas fournis.
Teile ohne **Parts No.** werden nicht geliefert.

16

Ref. No	Add-ress	New Parts	Parts No.	Description	Desti-nation	Re-marks	
R486 R487 R492 R493 R494-6			RK73GB1J222J RK73GB1J104J RK73GB1J331J RK73GB1J331J RK73GB1J101J	CHIP R CHIP R CHIP R CHIP R CHIP R	2.2K 100K 330 330 100	J J J J J	1/16W 1/16W 1/16W 1/16W 1/16W
R497 R498 R511-9 R520 R521			RK73GB1J470J RK73GB1J331J RK73GB1J103J RK73GB1J472J RK73GB1J222J	CHIP R CHIP R CHIP R CHIP R CHIP R	47 330 10K 4.7K 2.2K	J J J J J	1/16W 1/16W 1/16W 1/16W 1/16W
R601-5 R606,7 R608,9			RK73GB1J750J RK73GB1J391J RK73GB1J332J	CHIP R CHIP R CHIP R	75 390 3.3K	J J J	1/16W 1/16W 1/16W
Δ RLY501 SW201-7 SW401		*	S76-0143-08 S70-0105-08 S62-0121-08	RELAY SW,TACT SW,SLIDE	G680090102010 G180000270010 G060112011010		Y
FUNC201 VOL201		*	T99-0693-08 T99-0686-08	SW,ENCODER SW,ENCODER	G121161210010 G121162401200		Y
D101,2 D201-16 D401-9 D410,1 D412-6		*	1N4148W 1N4148W 1N4148W 1SS133T 1N4148W	D,SWITCHING D,SWITCHING D,SWITCHING D,SWITCHING D,SWITCHING	CHIK005041480020 CHIK005041480020 CHIK005041480020 K000013300520 CHIK005041480020		Y
D501,2 Δ D503-6 Δ D507,8 D601,2 IC101,2		*	1SS133T IN4007 1SS133T 1N4148W LA7956	D,SWITCHING D,SWITCHING D,SWITCHING D,SWITCHING IC,MONITOR SW	K000013300520 K000400700520 K000013300520 CHIK005041480020 J171795600010		Y
IC201 IC202 IC401 IC402 IC403,4		*	CXP82860-505Q MC24C08-WMN6 AK4588 CS493263-CL MM74LXC574	IC,CPU MICRO IC,MEMORY-EEPROM IC,ANALOG IC,ANALOG IC,LOGIC	PRJ020828605050 J000240860010 J080458800010 J080493260030 J040745740060		Y
IC405 IC406 IC407 IC409-12 IC413		*	MM74HCT244 MM74LXC244 M29W400BT BA4558F MM74LXC244	IC,LOGIC IC,LOGIC IC,MEMORY FLASH IC(OP AMP X2) IC,LOGIC	J040742440190 J040742440180 J005294000010 J121455800140 J040742440180		Y
IC415 IC416 IC417 Δ IC501 IC601		*	RC1117-2.5 RC1117-3.3 74VHCU04 CJ7805F LA7956	IC,LINEAR-REGULJ IC,LINEAR-REGULJ IC,LOGIC IC,LINEAR-REGULJ IC,MONITOR SW	J126111725020 J126111733020 J040740400260 J126780500400 J171795600010		Y
Q101,2 Q103,4 Q201-6 Q207 Q401-8		*	KRC107S KTC2875B KRC102S KTC3875S KTC2875B	SEMI,CHIP TR/NP SEMI,CHIP TR/NP SEMI,CHIP TR/NP SEMI,CHIP TR/NP SEMI,CHIP TR/NP	J522107S00210 J522875B0010 J522010200210 J522038750210 J522875B0010		Y
Q409 Q410 Q411 Q412 Q413		*	KRA111S KRA102S KRC102S KRC107S KRC107S	SEMI,CHIP TR/PNJ SEMI,CHIP TR/PNJ SEMI,CHIP TR/PNJ SEMI,CHIP TR/NP SEMI,CHIP TR/NP	J520011100210 J520010200210 J520010200210 J522107S00210 J522107S00210		EY X

L : Scandinavia
Y : PX(Far East,Hawaii)
Y : AAFES(Europe)

K : USA
T : England
X : Australia

P : Canada
E : Europe
Q : Russia

R : Mexico
G : Germany
H : Korea

C : China
V : China(Shanghai)
M : Other Areas

I : Malaysia

Δ indicates safety critical components .

PARTS LIST

VRS-5100

* New Parts
 Parts without **Parts No.** are not supplied.
 Les articles non mentionnés dans le **Parts No.** ne sont pas fournis.
 Teile ohne **Parts No.** werden nicht geliefert.

17

Ref. No	Add- ress	New Parts	Parts No.	Description	Desti- nation	Re- marks
Q501			KRC107M	SEMI,BRT/NPN RCJ6020107M0010		
Q502			2SC1740SR	SEMI,TR/GE NPN J5021740S0010		
Q503			KRC107M	SEMI,BRT/NPN RCJ6020107M0010	Y	
Q601.2			KTC3198Y	SEMI,TR/GE NPN J5023198Y0000		
Q603-6			KRC107S	SEMI,CHIP TR/NPJ522107S00210		
SEN201			W02-2995-08	MODULE.REMOCON E940633800000		
ZD201			MTZJ3.3B	D,ZENER K06003R344520		
ZD202			MTZJ6.2B	D,ZENER K06006R244520		
ZD203-6			MTZJ5.1B	D,ZENER K06005R144520		
ZD501			MTZJ5.6B	D,ZENER K06005R644520		
ZD502			MTZJ15B	D,ZENER K06015R044520	Y	

L : Scandinavia K : USA P : Canada R : Mexico C : China I : Malaysia
 Y : PX(Far East,Hawaii) T : England E : Europe G : Germany V : China(Shanghai)
 Y : AAFES(Europe) X : Australia Q : Russia H : Korea M : Other Areas Δ indicates safety critical components .

VRS-5100

SPECIFICATIONS

AUDIO section

Rated power output during STEREO operation (63 Hz ~ 12.5 kHz, 0.7% T.H.D., at 6 Ω, DIN/IEC)	50 W + 50 W
(1 kHz, 10% T.H.D., at 6 Ω)	60 W + 60 W
Effective power output during SURROUND operation	
FRONT	
(63 Hz ~ 12.5 kHz, 0.7 % T.H.D. at 6 Ω one channel driven)	50 W + 50 W
(1kHz, 10% T.H.D. at 6 Ω one channel driven)	60 W + 60 W
CENTER	
(63 Hz ~ 12.5 kHz, 0.7 % T.H.D. at 6 Ω one channel driven)	50 W
(1kHz, 10% T.H.D. at 6 Ω one channel driven)	60 W
SURROUND	
(63 Hz ~ 12.5 kHz, 0.7 % T.H.D. at 6 Ω one channel driven)	50 W + 50 W
(1kHz, 10% T.H.D. at 6 Ω one channel driven)	60 W + 60 W
SURROUND BACK	
(63 Hz ~ 12.5 kHz, 0.7 % T.H.D. at 6 Ω one channel driven)	50 W
(1kHz, 10% T.H.D. at 6 Ω one channel driven)	60 W
SUBWOOFER	
(60 Hz, 0.7 % T.H.D. at 6 Ω one channel driven)	50 W
(60 Hz, 10% T.H.D. at 6 Ω one channel driven)	60 W
Total harmonic distortion	0.02 % (1 kHz, 30 W, 6 Ω)
Frequency response (IHF'66)	
DVD, VIDEO 1, VIDEO 2, AUX	10 Hz ~ 95 kHz, +0 dB ~ -3.0 dB
Signal to noise ratio (IHF'66)	
DVD, VIDEO 1, VIDEO 2, AUX	95 dB
Input sensitivity / impedance	
DVD, VIDEO 1, VIDEO 2, AUX	350 mV / 47 kΩ
Output level / impedance	
VIDEO1	350 mV / 1 kΩ
PRE OUT (SUBWOOFER/SURROUND BACK)	1V / 1 kΩ
Tone control	
BASS	10 dB (at 100 Hz)
TREBLE	10 dB (at 10 kHz)

DIGITAL AUDIO section

Sampling frequency	32 kHz, 44.1 kHz, 48 kHz, 96 kHz
Input level / impedance / wave length	
Optical	(-15 dBm ~ -24 dBm), 660 nm ±30 nm
Coaxial	0.5 Vp-p / 75 Ω

VIDEO section

VIDEO inputs / outputs	
VIDEO (composite)	1 Vp-p / 75 Ω
S-VIDEO inputs / outputs (For U.S. Military only)	
S-VIDEO (luminance signal)	1 Vp-p / 75 Ω
S-VIDEO (chrominance signal)	0.286 Vp-p / 75 Ω

FM tuner section

Tuning frequency range	87.5 MHz ~ 108.0 MHz
Usable sensitivity (DIN at 75 Ω)	
MONO	1.3 V / 13.2 dBf (40 kHz DEV., S/N 26 dB)
STEREO	45 μV / 42.1 dBf (40+6 kHz DEV., S/N 46 dB)
Total harmonic distortion (DIN at 1 kHz)	
MONO (1 kHz, 40 kHz DEV.)	0.3% (65.2 dBf input)
STEREO (1 kHz, 40+6 kHz DEV.)	0.8% (65.2 dBf input)
Signal to noise ratio (DIN weighted at 1 kHz)	
MONO	65 dB (65.2 dBf input)
STEREO	60 dB (65.2 dBf input)
Stereo separation (DIN 1 kHz)	36 dB
Selectivity (DIN ±300 kHz)	64 dB
Frequency response (30 Hz ~ 15 kHz)	+0.5 dB, -3.0 dB

AM tuner section

Tuning frequency range	531 kHz ~ 1,602 kHz
For U.S. Military	
10 kHz step	530 kHz ~ 1,610 kHz
9 kHz step	531 kHz ~ 1,602 kHz
Usable sensitivity (30% mod, S/N 20 dB)	16 μV / (600 μV/m)
Signal to noise ratio (30% mod, 1mV input)	50 dB

GENERAL

Power consumption	170 W
Dimensions	W: 440 mm (17-5/16")
	H: 70 mm (2-3/4")
	D: 360 mm (14-3/16")
Weight (Net)	7.8 kg (17.2 lb)

Notes

1. KENWOOD follows a policy of continuous advancements in development. For this reason specifications may be changed without notice.
2. The full performance may not be exhibited in an extremely cold location (under a water-freezing temperature).