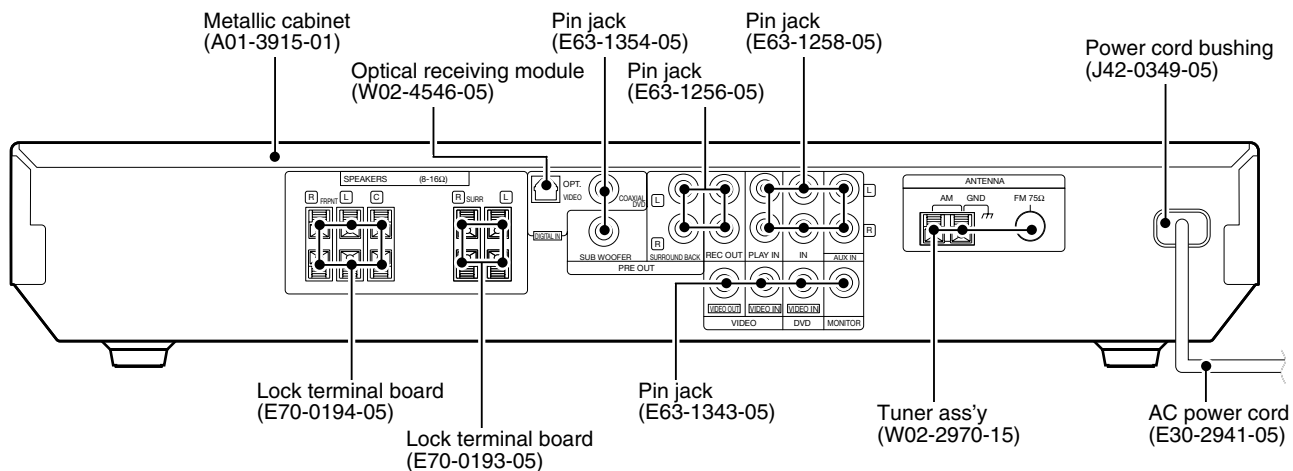
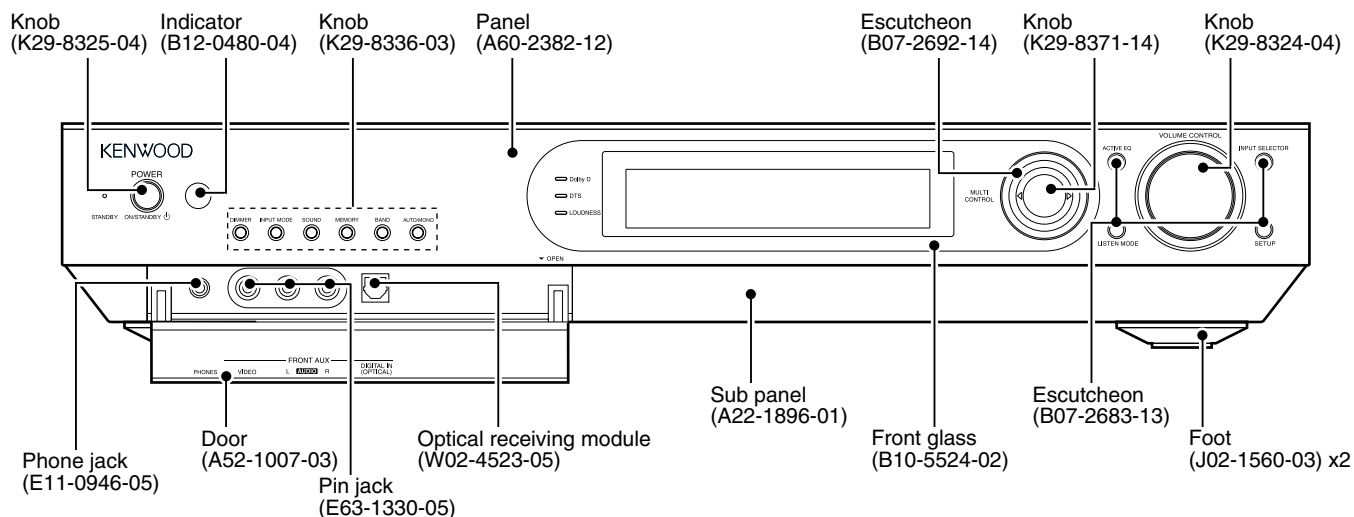


VRS-6100

SERVICE MANUAL



VRS-6100

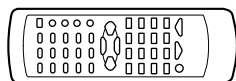
CONTENTS / ACCESSORIES / CAUTIONS

CONTENTS

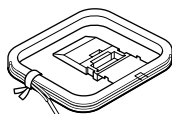
CONTENTS / ACCESSORIES / CAUTIONS	2	EXPLODED VIEW	19
PC BOARD	3	PARTS LIST.....	20
SCHEMATIC DIAGRAM	11	SECIFICATIONS.....	28

ACCESSORIES

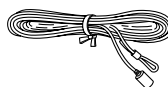
Remote control unit (1)
RC-R0629(A70-1658-05)



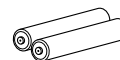
AM loop antenna (1)
(T90-0893-05)



FM indoor antenna (1)
(T90-0905-05)



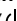
Batteries (R6/AA) (2)



CAUTIONS

Resetting the Microcomputer

The microcomputer may malfunction (unit cannot be operated, or shows an erroneous display) if the power cord is unplugged while the power is ON, or due to some other external factor. If this happens, execute the following procedure to reset the microcomputer and return the unit to its normal operating condition.

Unplug the power cord from the wall outlet, then plug it back in while holding down the POWER ON/STANDBY  key.

- Please note that resetting the microcomputer will clear the contents of the memory and returns the unit to the state it was in when it left the factory.

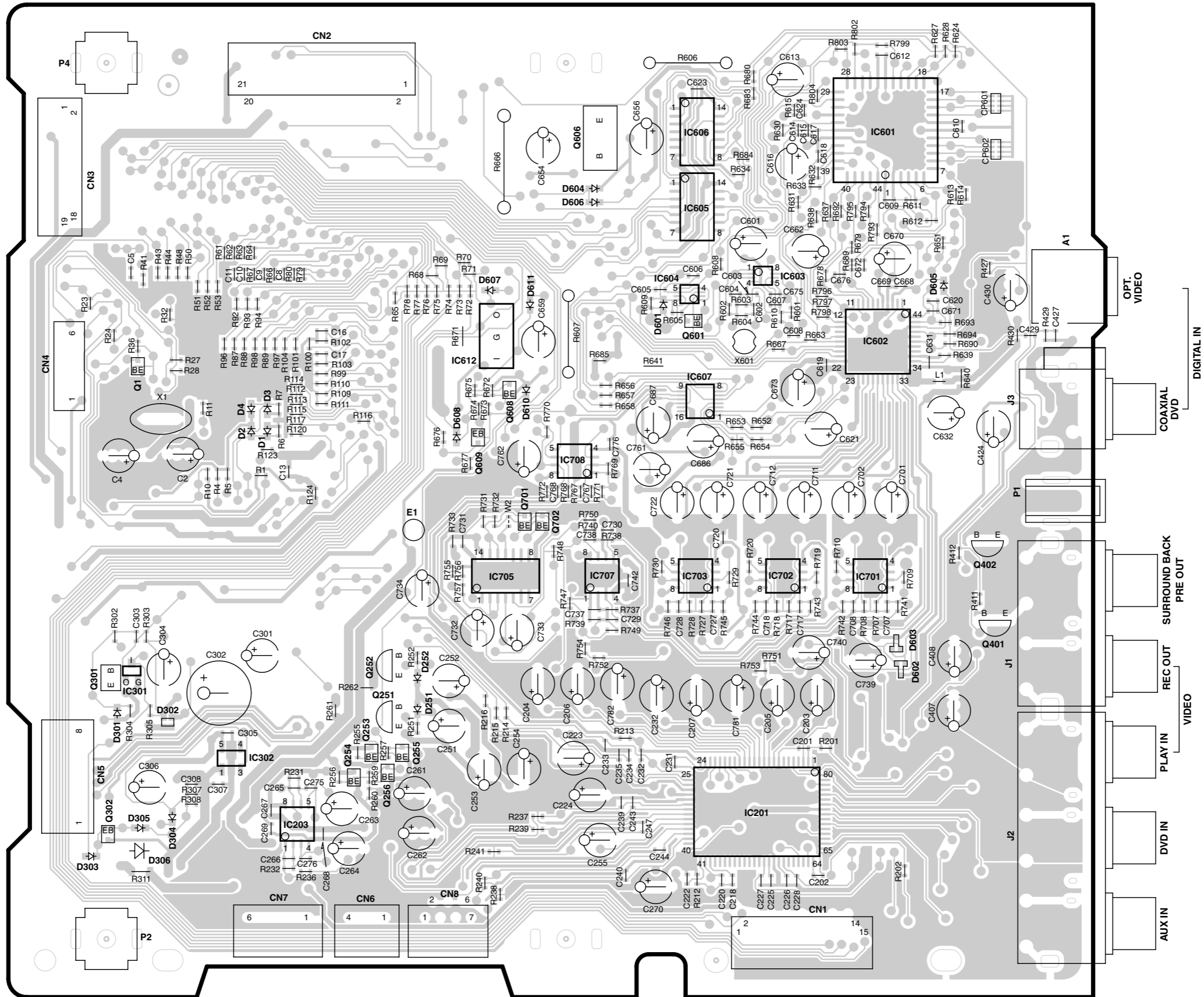
Memory back-up function

If the power supply to the receiver is shut down for about a day or more, the following settings will be reset to the initial conditions. Please be careful.

- Power mode = OFF
- Volume level = - 66 dB
- Dimmer level = OFF (Brightest condition)
- Broadcast band = FM
- Frequency setting = 87.50 MHz
- Tuning mode = AUTO
- Listen mode setting = STEREO
- Input selector settings = TUNER
- TONE ON/OFF = OFF
- LOUDNESS ON/OFF = OFF
- BASS BOOST ON/OFF = OFF

PC BOARD (Component side view)

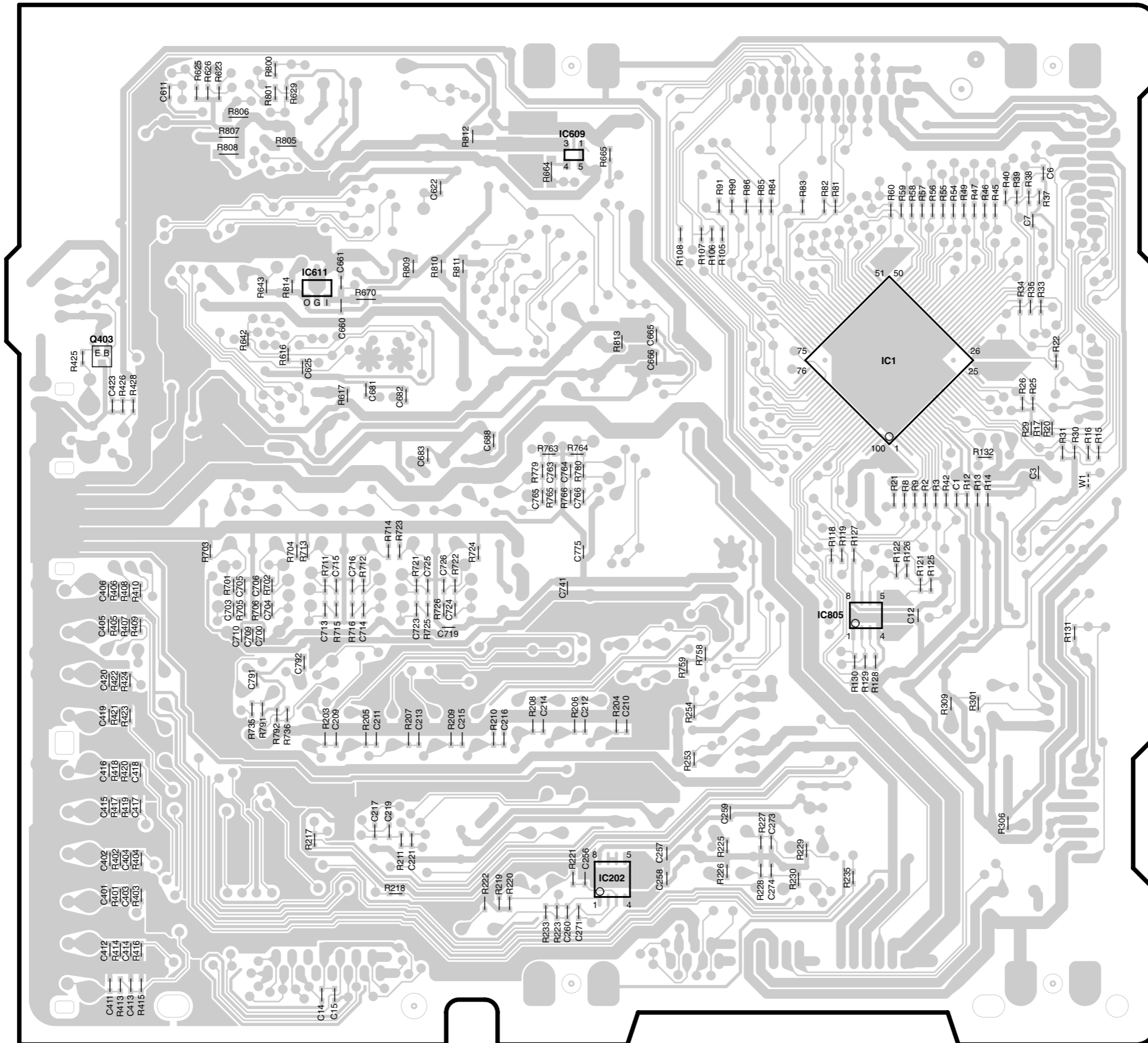
X08-3330-10 (J75-0029-12) (SIDE A)



Refer to the schematic diagram for the value of resistors and capacitors.

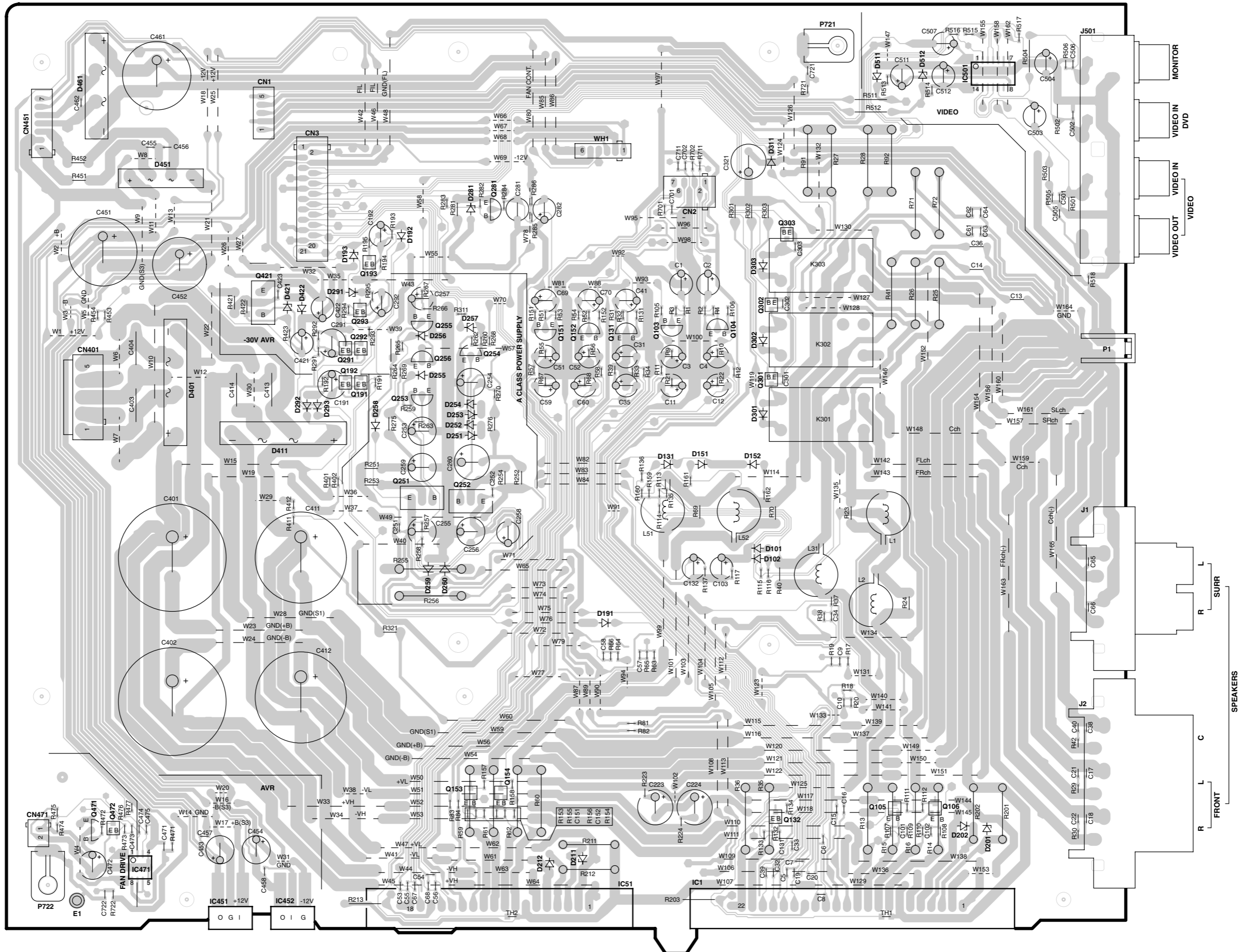
PC BOARD (Component side view)

X08-3330-10 (J75-0029-12) (SIDE B)



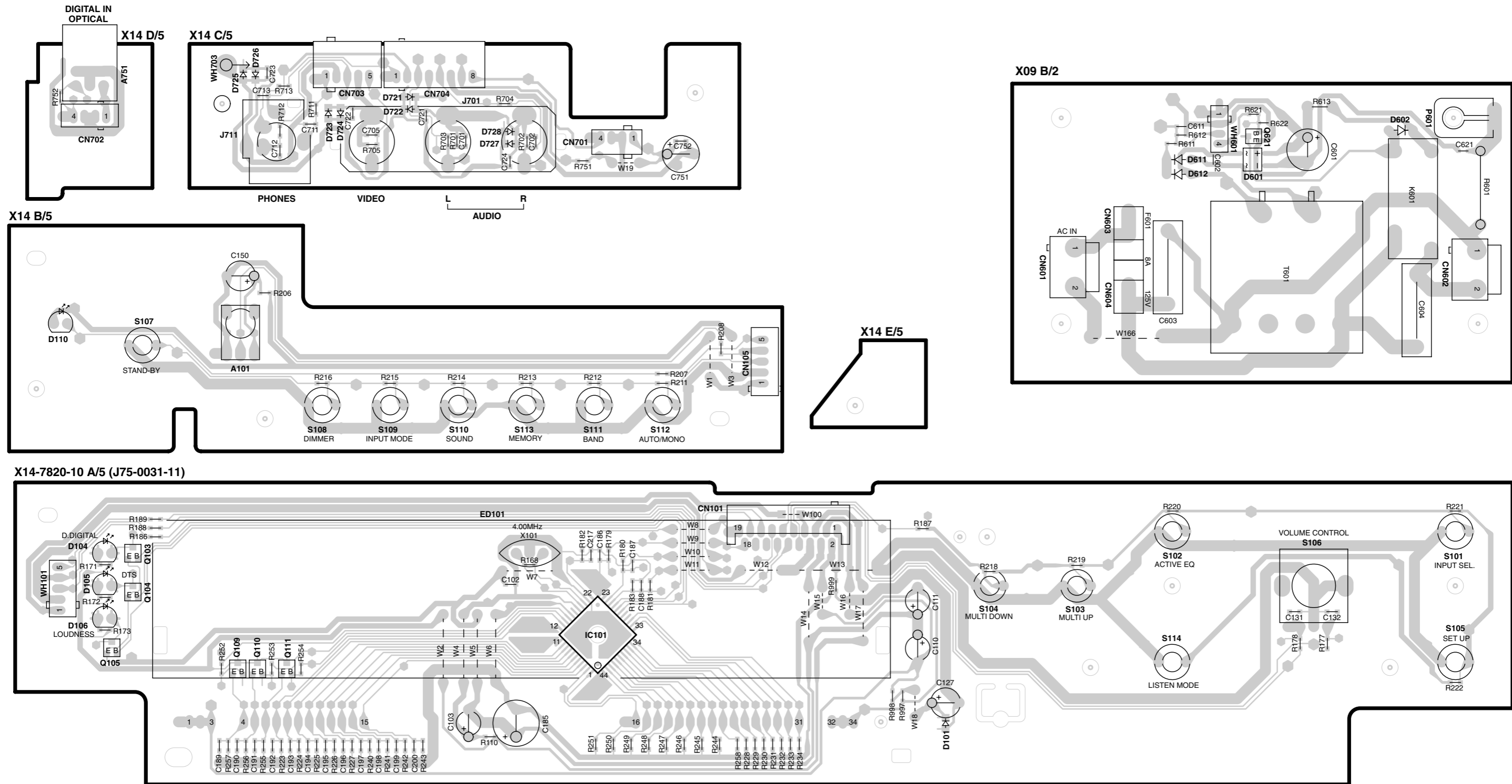
PC BOARD(Component side view)

X09-6890-10 A/2 (J70-1725-11)



Refer to the schematic diagram for the value of resistors and capacitors.

PC BOARD(Component side view)



IC1 : MN101C49KLH
 IC201 : M61516FP
 IC202,203,701-703,707,708 : NUM4565MD
 IC301 : XC61CN4002MR
 IC302 : XC62HR5102P
 IC601 : CS493263-CLG
 IC602 : AK4586
 IC603 : TC7WU04FU
 IC604 : TC7WH123FU

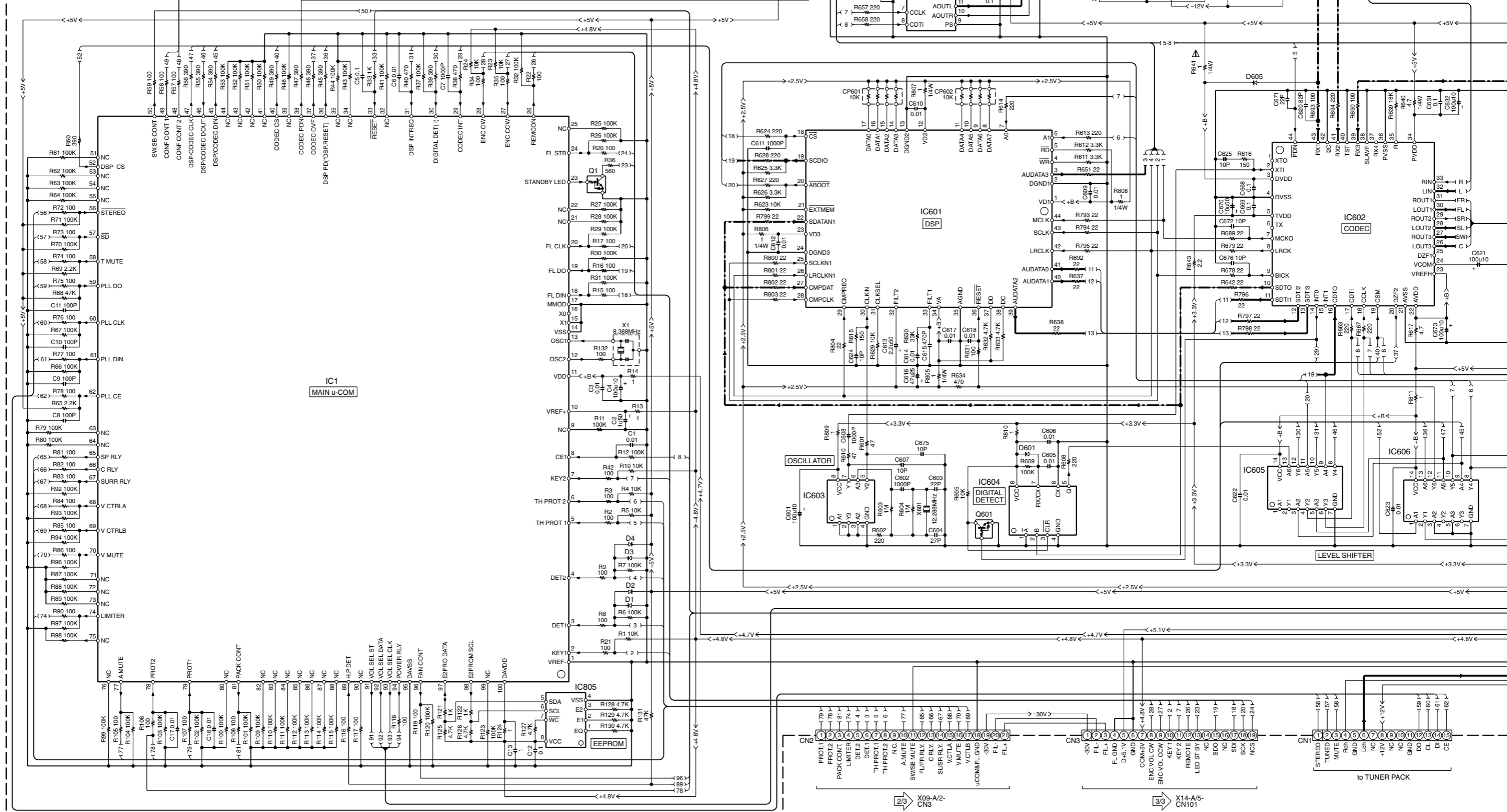
IC605 : TC74HCT7007AF
 IC606 : TC74HC07AF
 IC607 : AK4384
 IC609 : XC62EP2502MR
 IC611 : XC6201P332PR
 IC612 : BA05T
 IC705 : TC74HC4066AF
 IC805 : M24C02WMN-1ASA

Q1,255,601,701,702 : DTC124EUA or KRC403
 Q251 : 2SC2003(L,K)
 Q252 : 2SA954(L,K)
 Q253,608 : 2SC4081(R,S) or 2SD1819A(R,I)
 Q254,256,302,609 : 2SA1576A(R,S) or 2SC1399(Y,G,R) or 2SC1740S(Y,G) or 2SC2785(F,E)
 Q401,402 : 2SC2878(B)
 Q403 : 2SC4213(B)
 Q606 : 2SB1375

D1-4,301,303-305,601,605,608 : MA111
 D251,252 : HZU7.5(B2) or UDZS7.5B
 D302 : 1SS402
 D306 : SE5688 (TPB5)
 D602 : DAN202U or 1SS301
 D603 : DAP202U or 1SS300
 D604 : HZU3.9(B2) or UDZS3.9B
 D606,607 : HZU5.6(B2) or UDZS5.6B
 D610 : HZU5.1(B2) or UDZS5.1B
 D611 : HZU3.3(B2) or UDZS3.3B

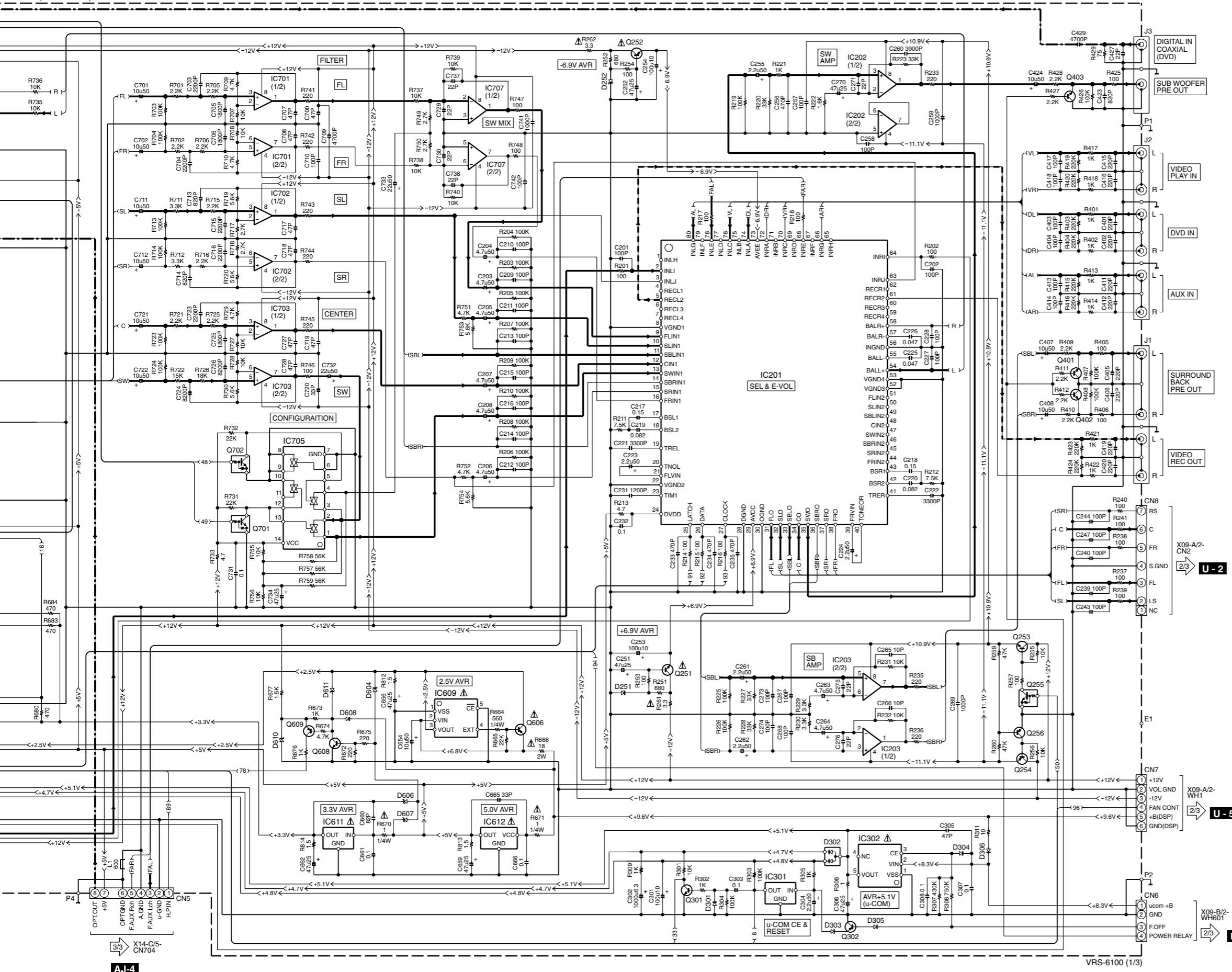
--- RECORDING LINE
 --- DIGITAL LINE
 --- SIGNAL LINE
 --- GND LINE
 --- +B
 --- -B

(X08-3330-10)



VRS-6100

(X08-3330-10)



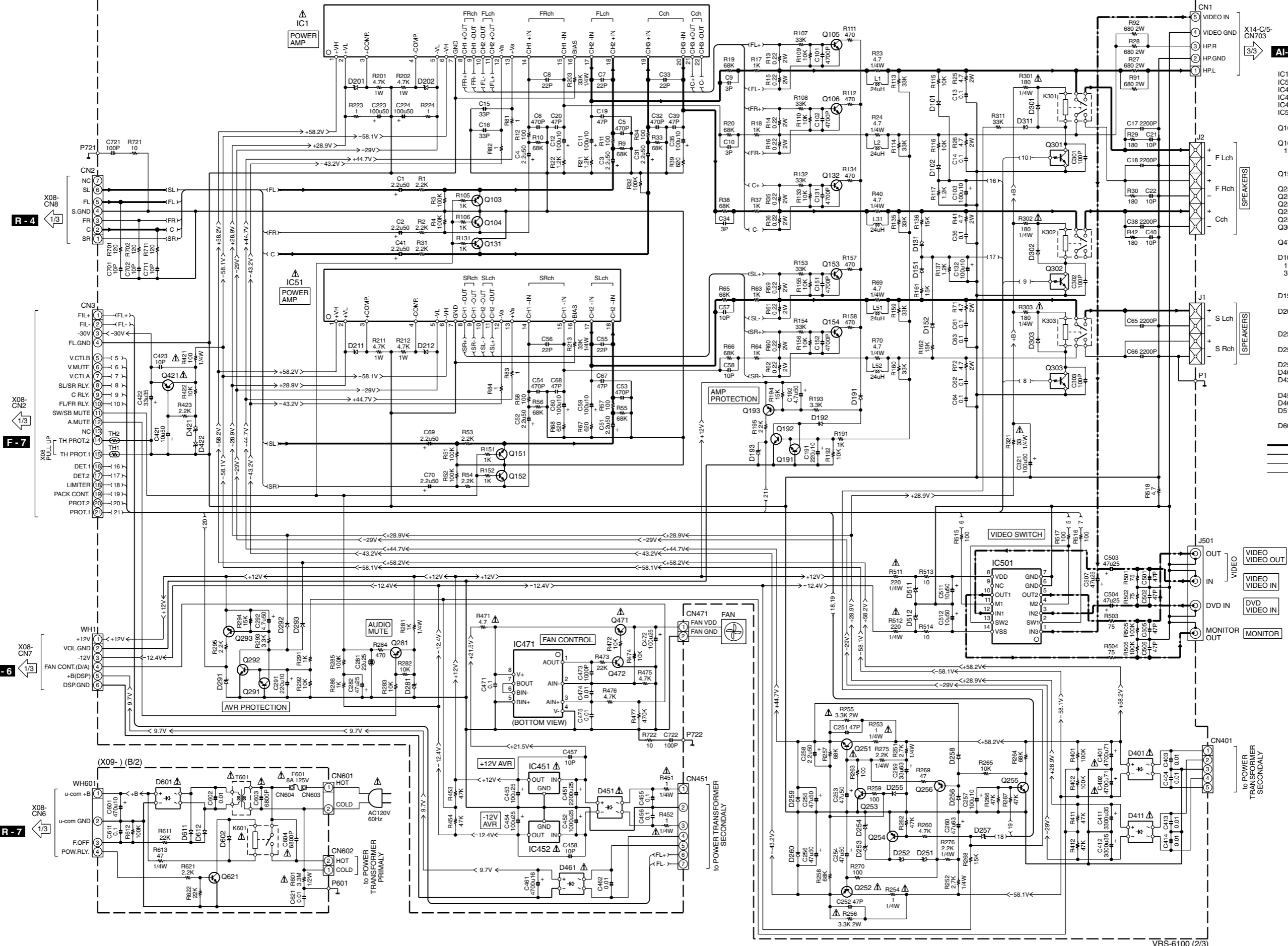
CAUTION: For continued safety, replace safety critical components only with manufacturer's recommended parts (refer to parts list). Δ indicates safety critical components. For continued protection against risk of fire, replace only with same type and rating fuse(s). To reduce the risk of electric shock, leakage-current or resistance measurements shall be carried out (exposed parts are acceptably insulated from the supply circuit) before the appliance is returned to the customer.

The DC voltage is an actual reading measured with a high impedance type voltmeter with no signal input. The measurement value may vary depending on the measuring instruments used or on the product.

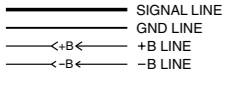
AJ-4

VRS-6100 (1/3)

(X09-6890-10) (A/2)



- AI-5**
- IC1 : STK413-210A
 - IC51 : STK412-210A
 - IC451 : KIA7812API
 - IC452 : KIA7912PI
 - IC471 : NJM2904M
 - IC501 : NJM2279M
- Q103,104,131,151,152 : 2SC2878(B)
- Q105,106,132,153,154, 191,192,291,292,472,621 : 2SC4081(R,S) or 2SD1819A(Q,R)
- Q193,293 : 2SA1576A(R,S) or 2SD1216A(Q,R)
- Q251 : 2SD2525
- Q252,421 : 2SB1640
- Q253,255 : 2SC1845(F,E)
- Q254,281 : 2SA992(F,E)
- Q256 : 2SA1123(R,S)
- Q301-303 : KRC410 or DTC143TUA
- Q471 : 2SA1534A(R,S)
- D101,102,131,151,152,191, 192,255,256,258,292,293, 301-303,311,602,611,612 : HSS104A or 1SS133
- D193,281,291 : MTZJ4.7(B) or RD4.7ES(B2)
- D201,202,211,212,422 : MTZJ15(B) or RD15ES(B2)
- D251-254 : MTZJ11(B) or RD11ES(B2)
- D257 : MTZJ3.9(B) or RD3.9ES(B2)
- D259,260 : S5688B(TP5)
- D401,411 : D5SBA20F03
- D421 : MTZJ16(B) or RD16ES(B2)
- D451 : D2SBA20F03
- D461 : D3SBA20F03
- D511,512 : MTZJ5.6(B) or RD5.6ES(B2)
- D601 : S1ZB20(4072)

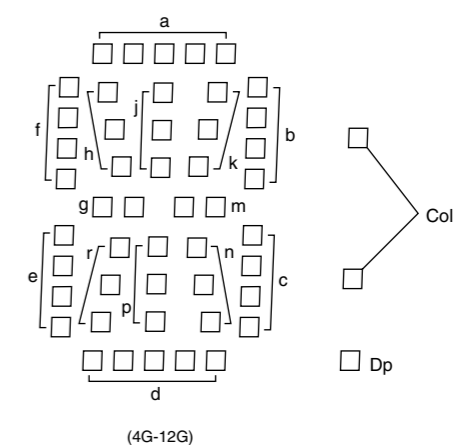
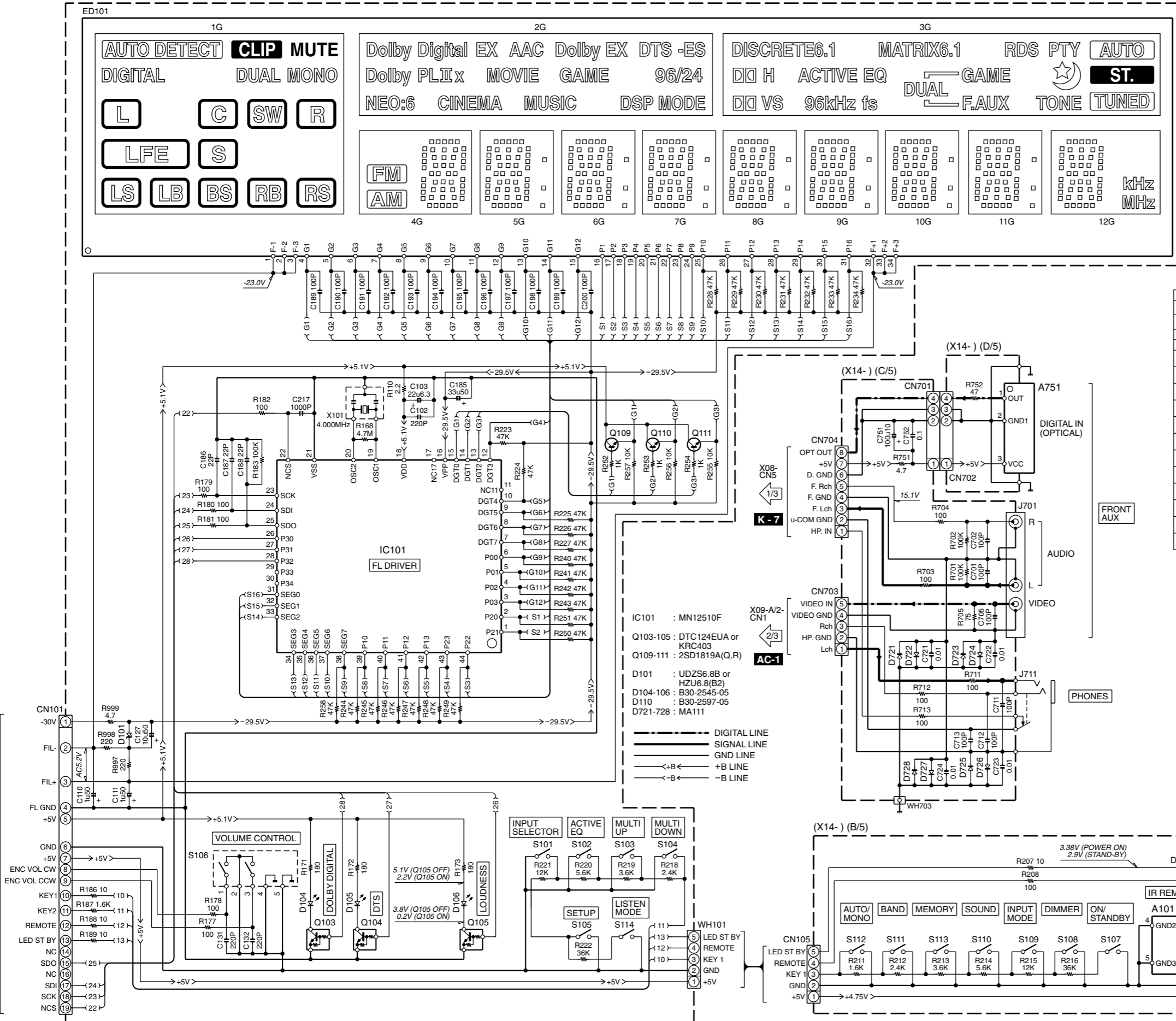


CAUTION: For continued safety, replace safety critical components only with manufacturer's recommended parts (refer to parts list). Δ indicates safety critical components. For continued protection against risk of fire, replace only with same type and rating fuse(s). To reduce the risk of electric shock, leakage-current or resistance measurements shall be carried out (exposed parts are acceptably insulated from the supply circuit) before the appliance is returned to the customer.

The DC voltage is an actual reading measured with a high impedance type voltmeter with no signal input. The measurement value may vary depending on the measuring instruments used or on the product.

VRS-6100

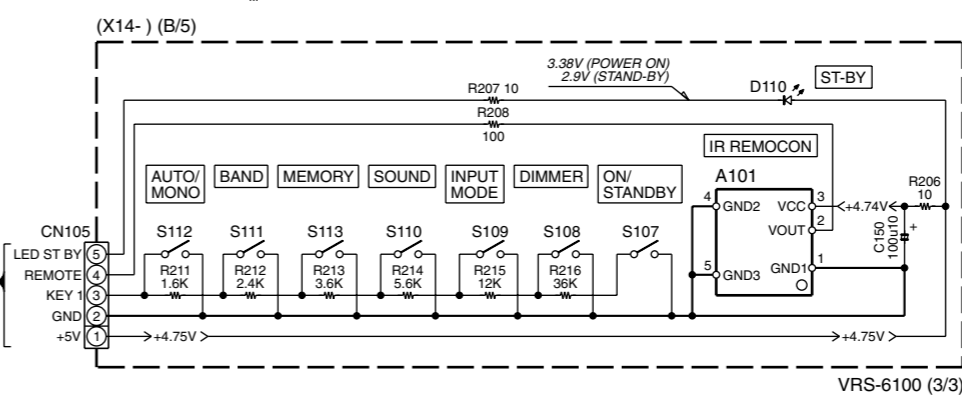
(X14-7820-10) (A/5)

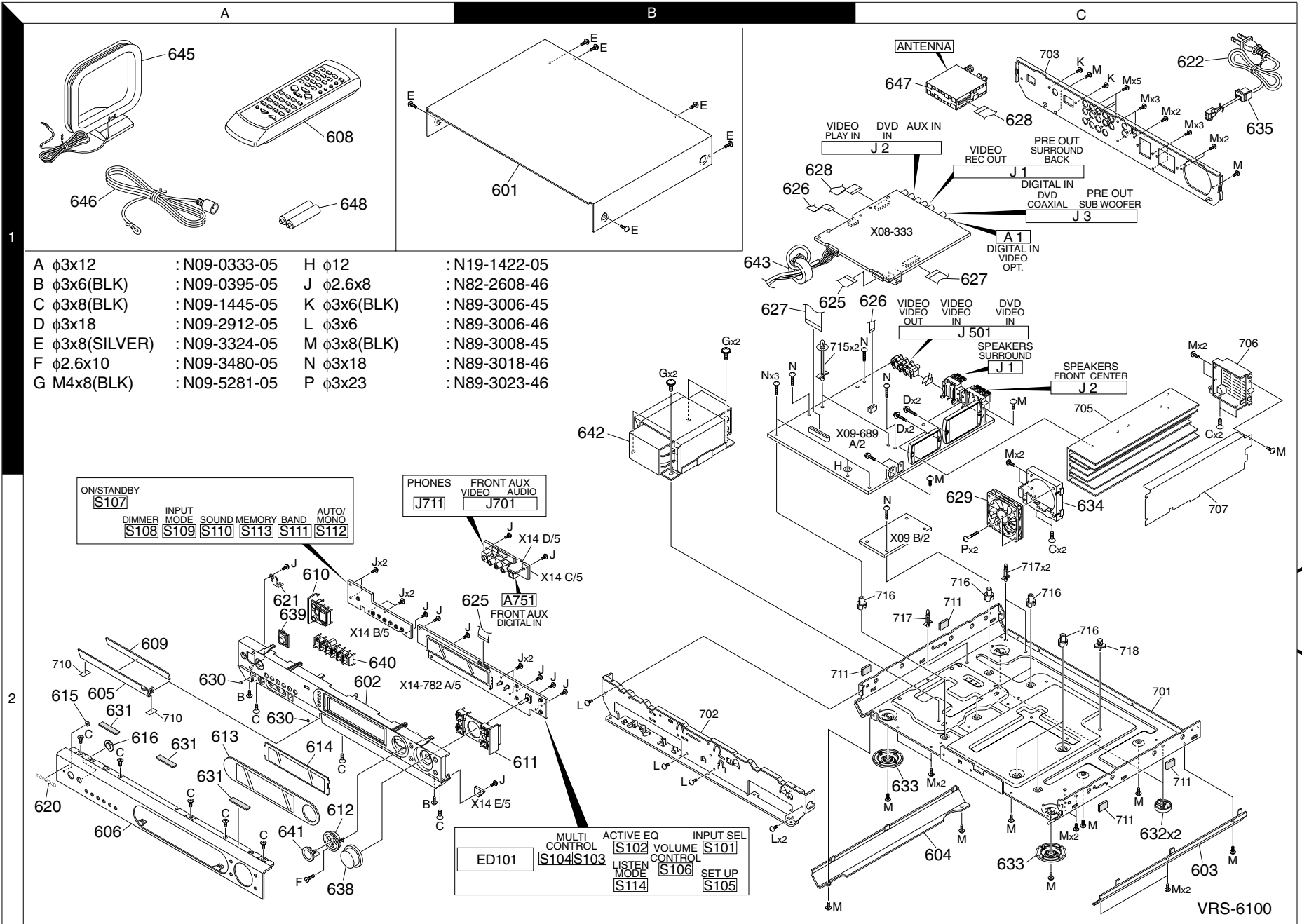


	1G	2G	3G	4G	5G	6G	7G	8G	9G	10G	11G	12G
P1	AUTO DETECT	Dolby Digital	DISCRETE6.1	a	a	a	a	a	a	a	a	a
P2	CLIP	EX	MATRIX6.1	h	h	h	h	h	h	h	h	h
P3	MUTE	AAC	RDS	j	j	j	j	j	j	j	j	j
P4	DIGITAL	Dolby EX	PTY	k	k	k	k	k	k	k	k	k
P5	DUAL MONO	DTS	AUTO	b	b	b	b	b	b	b	b	b
P6	L	-ES	DI H	f	f	f	f	f	f	f	f	f
P7	C	Dolby PL	ACTIVE EQ	m	m	m	m	m	m	m	m	m
P8	SW	II	DUAL	g	g	g	g	g	g	g	g	g
P9	R	x	GAME	c	c	c	c	c	c	c	c	c
P10	LFE	MOVIE	ST	e	e	e	e	e	e	e	e	e
P11	S	GAME	ST	r	r	r	r	r	r	r	r	r
P12	LS	96/24	DI VS	p	p	p	p	p	p	p	p	p
P13	LB	NEO:6	96kHz fs	n	n	n	n	n	n	n	n	n
P14	BS	CINEMA	F.AUX	d	d	d	d	d	d	d	d	d
P15	RB	MUSIC	TONE	Col	Col	Col	Col	Col	Col	Col	Col	Col
P16	RS	DSP MODE	TUNED	AM	Dp	Dp	Dp	Dp	Dp	Dp	Dp	Dp

CAUTION: For continued safety, replace safety critical components only with manufacturer's recommended parts (refer to parts list). Δ indicates safety critical components. For continued protection against risk of fire, replace only with same type and rating fuse(s). To reduce the risk of electric shock, leakage-current or resistance measurements shall be carried out (exposed parts are acceptably insulated from the supply circuit) before the appliance is returned to the customer.

The DC voltage is an actual reading measured with a high impedance type voltmeter with no signal input. The measurement value may vary depending on the measuring instruments used or on the product.





A	φ3x12	:	N09-0333-05	H	φ12	:	N19-1422-05
B	φ3x6(BLK)	:	N09-0395-05	J	φ2.6x8	:	N82-2608-46
C	φ3x8(BLK)	:	N09-1445-05	K	φ3x6(BLK)	:	N89-3006-45
D	φ3x18	:	N09-2912-05	L	φ3x6	:	N89-3006-46
E	φ3x8(SILVER)	:	N09-3324-05	M	φ3x8(BLK)	:	N89-3008-45
F	φ2.6x10	:	N09-3480-05	N	φ3x18	:	N89-3018-46
G	M4x8(BLK)	:	N09-5281-05	P	φ3x23	:	N89-3023-46

EXPLODED VIEW (UNIT)

VRS-6100

* New Parts

Parts without **Parts No.** are not supplied.Les articles non mentionnés dans le **Parts No.** ne sont pas fournis.Teile ohne **Parts No.** werden nicht geliefert.

①

Ref. No	Add-ress	New Parts	Parts No.	Description	Desti-nation	Re-marks
VRS-6100						
601	1B	*	A01-3915-01	METALLIC CABINET		
602	2A	*	A22-1896-01	SUB PANEL		
603	2C	*	A50-1416-02	SIDE PLATE		
604	2C	*	A50-1417-02	SIDE PLATE		
605	2A	*	A52-1007-03	DOOR		
606	2A	*	A60-2382-12	PANEL		
608	1A	*	A70-1658-05	REMOTE CONTROLLER ASSY		
-		*	B60-5484-00	INSTRUCTION MANUAL (EN)		
-		*	B60-5485-00	INSTRUCTION MANUAL (FR)		
609	2A	*	B03-3937-04	DRESSING PLATE	P1	
610	2A	*	B07-2682-03	ESCUTCHEON		
611	2B	*	B07-2683-13	ESCUTCHEON		
612	2A	*	B07-2692-14	ESCUTCHEON		
613	2A	*	B10-5524-02	FRONT GLASS		
614	2A	*	B11-1599-03	COLOR FILTER		
615	2A	*	B12-0341-04	INDICATOR		
616	2A	*	B12-0480-04	INDICATOR		
620	2A	*	B43-0336-04	BADGE		
621	2A	*	E29-1705-04	LEAD PLATE		
△ 622	1C	*	E30-2941-05	AC POWER CORD		
625	1B,2B	*	E35-3665-05	FLAT CABLE 19P 172MM		
626	1B,1C	*	E35-3668-05	FLAT CABLE 7P 90MM		
627	1B,1C	*	E35-3680-05	FLAT CABLE 21P 250MM		
628	1B,1C	*	E35-3681-05	FLAT CABLE 15P 90MM		
629	2C	*	F09-0183-05	FAN		
630	2A	*	G11-2888-04	CUSHION		
631	2A	*	G11-2948-04	CUSHION		
-		*	H10-7922-02	POLYSTYRENE FOAMED FIXTURE		
-		*	H10-7923-02	POLYSTYRENE FOAMED FIXTURE		
-		*	H12-3640-04	PACKING FIXTURE		
-		*	H25-0232-04	PROTECTION BAG (235X350X0.03)		
-		*	H25-0391-04	PROTECTION BAG		
-		*	H50-4927-04	ITEM CARTON CASE		
632	2C	*	J02-0370-05	FOOT		
633	2C	*	J02-1560-03	FOOT		
634	2C	*	J19-6406-02	HOLDER		
△ 635	1C	*	J42-0349-05	POWER CORD BUSHING		
638	2A	*	K29-8324-04	KNOB		
639	2A	*	K29-8325-04	KNOB		
640	2A	*	K29-8336-03	KNOB		
641	2A	*	K29-8371-14	KNOB		
△ 642	1B	*	L07-3283-05	POWER TRANSFORMER		
643	1B	*	L92-0094-05	FERRITE CORE		
647	1C	*	W02-2970-15	TUNER ASSY		
648	1A	*	W09-0022-05	BATTERY		
PREAMPLIFIER X08-3330-10						
C1			CK73GB1H103K	CHIP C		0.010UF K
C2			CE04KW1H010M	ELECTRO		1.0UF 50WV
C3			CK73GB1H103K	CHIP C		0.010UF K
C4			CE04KW1A101M	ELECTRO		100UF 10WV
C5			CK73GB1H104K	CHIP C		0.10UF K

L : Scandinavia K : USA P : Canada R : Mexico C : China I : Malaysia
 Y : PX(Far East,Hawaii) T : England E : Europe G : Germany V : China(Shanghai)
 Y : AAFES(Europe) X : Australia Q : Russia H : Korea M : Other Areas △ indicates safety critical components .

* New Parts

Parts without **Parts No.** are not supplied.Les articles non mentionnés dans le **Parts No.** ne sont pas fournis.Teile ohne **Parts No.** werden nicht geliefert.

②

Ref. No	Add-ress	New Parts	Parts No.	Description	Desti-nation	Re-marks
C6			CK73GB1H103K	CHIP C		0.010UF K
C7			CK73GB1H102K	CHIP C		100PF K
C8 -11			CC73GCH1H101J	CHIP C		100PF J
C12			CK73GB1H104K	CHIP C		0.10UF K
C13			CK73GF1A105Z	CHIP C		1.0UF Z
C16 ,17			CK73GB1H103K	CHIP C		0.010UF K
C201,202			CC73GCH1H101J	CHIP C		100PF J
C203-208			CE04KW1H4R7M	ELECTRO		4.7UF 50WV
C209-216			CC73GCH1H101J	CHIP C		100PF J
C217,218		*	CK73GB1E154K	CHIP C		0.15UF K
C219,220			CK73GB1C823K	CHIP C		0.082UF K
C221,222			CK73GB1H332K	CHIP C		3300PF K
C223,224			CE04KW1H2R2M	ELECTRO		2.2UF 50WV
C225,226			CK73GB1E473K	CHIP C		0.047UF K
C227,228			CC73GCH1H101J	CHIP C		100PF J
C231			CK73GB1H122K	CHIP C		1200PF K
C232			CK73GB1H104K	CHIP C		0.10UF K
C233-235			CC73GCH1H471J	CHIP C		470PF J
C239,240			CC73GCH1H101J	CHIP C		100PF J
C243,244			CC73GCH1H101J	CHIP C		100PF J
C247			CC73GCH1H101J	CHIP C		100PF J
C251,252			CE04KW1E470M	ELECTRO		47UF 25WV
C253,254			CE04KW1A101M	ELECTRO		100UF 10WV
C255			CE04KW1H2R2M	ELECTRO		2.2UF 50WV
C256			CC73GCH1H471J	CHIP C		470PF J
C257,258			CC73GCH1H101J	CHIP C		100PF J
C259			CK73GB1H102K	CHIP C		1000PF K
C260			CK73GB1H392K	CHIP C		3900PF K
C261,262			CE04KW1H2R2M	ELECTRO		2.2UF 50WV
C263,264			CE04KW1H4R7M	ELECTRO		4.7UF 50WV
C265,266			CC73GCH1H100D	CHIP C		10PF D
C267,268			CC73GCH1H101J	CHIP C		100PF J
C269			CK73GB1H102K	CHIP C		1000PF K
C270			CE04KW1E470M	ELECTRO		47UF 25WV
C271			CC73GCH1H220J	CHIP C		22PF J
C273,274			CC73GCH1H101J	CHIP C		100PF J
C275,276			CC73GCH1H220J	CHIP C		22PF J
C301			CE04KW1A101M	ELECTRO		100UF 10WV
C302			CE04KW0J102M	ELECTRO		1000UF 6.3WV
C303			CK73GB1H104K	CHIP C		0.10UF K
C304			CE04KW1H2R2M	ELECTRO		2.2UF 50WV
C305			CC73GCH1H470J	CHIP C		47PF J
C306			CE04KW1E470M	ELECTRO		47UF 25WV
C307,308			CK73GB1H104K	CHIP C		0.10UF K
C401,402			CC73GCH1H221J	CHIP C		220PF J
C403,404			CC73GCH1H101J	CHIP C		100PF J
C405,406			CC73GCH1H221J	CHIP C		220PF J
C407,408			CE04KW1H100M	ELECTRO		10UF 50WV
C411,412			CC73GCH1H221J	CHIP C		220PF J
C413,414			CC73GCH1H101J	CHIP C		100PF J
C415,416			CC73GCH1H221J	CHIP C		220PF J
C417,418			CC73GCH1H101J	CHIP C		100PF J
C419,420			CC73GCH1H221J	CHIP C		220PF J
C423			CK73GB1H821K	CHIP C		820PF K
C424			CE04KW1H100M	ELECTRO		10UF 50WV

L : Scandinavia K : USA P : Canada R : Mexico C : China I : Malaysia
 Y : PX(Far East,Hawaii) T : England E : Europe G : Germany V : China(Shanghai)
 Y : AAFES(Europe) X : Australia Q : Russia H : Korea M : Other Areas △ indicates safety critical components .

* New Parts

Parts without **Parts No.** are not supplied.

Les articles non mentionnés dans le **Parts No.** ne sont pas fournis.

Teile ohne **Parts No.** werden nicht geliefert.



Ref. No	Add-ress	New Parts	Parts No.	Description	Desti-nation	Re-marks
C427			CC73GCH1H220J	CHIP C	22PF	J
C429			CK73GB1H472K	CHIP C	4700PF	K
C430			CE04KW1A101M	ELECTRO	100UF	10WV
C601			CE04KW1A101M	ELECTRO	100UF	10WV
C602			CK73GB1H102K	CHIP C	1000PF	K
C603			CC73GCH1H220J	CHIP C	22PF	J
C604			CC73GCH1H270J	CHIP C	27PF	J
C605,606			CK73GB1H103K	CHIP C	0.010UF	K
C607			CC73GCH1H100D	CHIP C	10PF	D
C608			CK73GB1H102K	CHIP C	1000PF	K
C609,610			CK73GB1H103K	CHIP C	0.010UF	K
C611			CK73GB1H102K	CHIP C	1000PF	K
C612			CK73GB1H103K	CHIP C	0.010UF	K
C613			CE04KW1H2R2M	ELECTRO	2.2UF	50WV
C614			CK73GB1H103K	CHIP C	0.010UF	K
C615			CC73GCH1H471J	CHIP C	470PF	J
C616			CE04KW1E470M	ELECTRO	47UF	25WV
C617,618			CK73GB1H103K	CHIP C	0.010UF	K
C620			CC73GCH1H820J	CHIP C	82PF	J
C621			CE04KW1A101M	ELECTRO	100UF	10WV
C622,623			CK73GB1H103K	CHIP C	0.010UF	K
C624,625			CC73GCH1H100D	CHIP C	10PF	D
C631			CK73GB1H104K	CHIP C	0.10UF	K
C632			CE04KW1A101M	ELECTRO	100UF	10WV
C654			CE04KW1H100M	ELECTRO	10UF	50WV
C656			CE04KW1E470M	ELECTRO	47UF	25WV
C659			CE04KW1E470M	ELECTRO	47UF	25WV
C660			CC73GCH1H820J	CHIP C	82PF	J
C661			CK73GB1H104K	CHIP C	0.10UF	K
C662			CE04KW1E470M	ELECTRO	47UF	25WV
C665			CC73GCH1H330J	CHIP C	33PF	J
C666			CK73GB1H104K	CHIP C	0.10UF	K
C668,669			CK73GB1H104K	CHIP C	0.10UF	K
C670			CE04KW1H100M	ELECTRO	10UF	50WV
C671			CC73GCH1H220J	CHIP C	22PF	J
C672			CC73GCH1H100D	CHIP C	10PF	D
C673			CE04KW1A101M	ELECTRO	100UF	10WV
C675,676			CC73GCH1H100D	CHIP C	10PF	D
C681,682			CC73GCH1H220J	CHIP C	22PF	J
C683			CK73GB1H104K	CHIP C	0.10UF	K
C686,687			CE04KW1H220M	ELECTRO	22UF	50WV
C688			CK73GB1H104K	CHIP C	0.10UF	K
C700			CC73GCH1H470J	CHIP C	47PF	J
C701,702			CE04KW1H100M	ELECTRO	10UF	50WV
C703,704			CK73GB1H222K	CHIP C	2200PF	K
C705,706			CK73GB1H182K	CHIP C	1800PF	K
C707,708			CC73GCH1H470J	CHIP C	47PF	J
C709			CK73GB1H472K	CHIP C	4700PF	K
C710			CC73GCH1H101J	CHIP C	100PF	J
C711,712			CE04KW1H100M	ELECTRO	10UF	50WV
C713,714			CK73GB1H821K	CHIP C	820PF	K
C715,716			CK73GB1H222K	CHIP C	2200PF	K
C717-719			CC73GCH1H470J	CHIP C	47PF	J
C720			CC73GCH1H330J	CHIP C	33PF	J
C721,722			CE04KW1H100M	ELECTRO	10UF	50WV

L: Scandinavia K: USA P: Canada R: Mexico C: China I: Malaysia
 Y: PX(Far East,Hawaii) T: England E: Europe G: Germany V: China(Shanghai)
 Y: AAFES(Europe) X: Australia Q: Russia H: Korea M: Other Areas Δ indicates safety critical components.

* New Parts

Parts without **Parts No.** are not supplied.

Les articles non mentionnés dans le **Parts No.** ne sont pas fournis.

Teile ohne **Parts No.** werden nicht geliefert.



Ref. No	Add-ress	New Parts	Parts No.	Description	Desti-nation	Re-marks
C723			CK73GB1H222K	CHIP C	2200PF	K
C724			CK73GB1H822K	CHIP C	8200PF	K
C725			CK73GB1H182K	CHIP C	1800PF	K
C726			CK73GB1H822K	CHIP C	8200PF	K
C727,728			CC73GCH1H470J	CHIP C	47PF	J
C729,730			CC73GCH1H220J	CHIP C	22PF	J
C731			CK73GB1H104K	CHIP C	0.10UF	K
C732,733			CE04KW1H220M	ELECTRO	22UF	50WV
C734			CE04KW1E470M	ELECTRO	47UF	25WV
C737,738			CC73GCH1H220J	CHIP C	22PF	J
C739,740			CE04KW1H100M	ELECTRO	10UF	50WV
C741			CK73GB1H102K	CHIP C	1000PF	K
C742			CC73GCH1H101J	CHIP C	100PF	J
C761,762			CE04KW1H100M	ELECTRO	10UF	50WV
C763,764			CK73GB1H182K	CHIP C	1800PF	K
C765,766			CK73GB1H222K	CHIP C	2200PF	K
C767,768			CC73GCH1H470J	CHIP C	47PF	J
C775			CC73GCH1H470J	CHIP C	47PF	J
C776			CC73GCH1H101J	CHIP C	100PF	J
C781,782			CE04KW1H4R7M	ELECTRO	4.7UF	50WV
C791,792			CC73GCH1H471J	CHIP C	470PF	J
CN1			E40-4940-05	FLAT CABLE CONNECTOR		
CN2			E40-4946-05	FLAT CABLE CONNECTOR		
CN3			E40-8903-05	FLAT CABLE CONNECTOR		
CN5		*	E41-0947-05	PIN ASSY		
CN6		*	E41-0943-05	PIN ASSY		
CN7		*	E41-0945-05	PIN ASSY		
CN8		*	E40-4932-05	FLAT CABLE CONNECTOR		
J1			E63-1256-05	PIN JACK		
J2			E63-1258-05	PIN JACK		
J3		*	E63-1354-05	PIN JACK		
E1		*	J11-0898-05	WIRE CLAMPER		
P2		*	J22-1240-04	MOUNTING HARDWARE		
P4		*	J22-1240-04	MOUNTING HARDWARE		
L1			L92-0330-05	CHIP FERRITE		
X1			L78-0725-05	RESONATOR (8.38MHZ)		
X601			L77-2296-05	CRYSTAL RESONATOR(12.288MHZ)		
CP601,602			R90-0714-05	MULTI-COMP	10K	X4
R1			RK73GB1J103J	CHIP R	10K	J 1/16W
R2 ,3			RK73GB1J101J	CHIP R	100	J 1/16W
R4 ,5			RK73GB1J103J	CHIP R	10K	J 1/16W
R6 ,7			RK73GB1J104J	CHIP R	100K	J 1/16W
R8 ,9			RK73GB1J101J	CHIP R	100	J 1/16W
R10			RK73GB1J103J	CHIP R	10K	J 1/16W
R11 ,12			RK73GB1J104J	CHIP R	100K	J 1/16W
R13 ,14			RK73GB1J1R0J	CHIP R	1	J 1/16W
R15 -17			RK73GB1J101J	CHIP R	100	J 1/16W
R20 -22			RK73GB1J101J	CHIP R	100	J 1/16W
R23 ,24			RK73GB1J103J	CHIP R	10K	J 1/16W
R25 -32			RK73GB1J104J	CHIP R	100K	J 1/16W
R33			RK73GB1J102J	CHIP R	1.0K	J 1/16W
R34 ,35			RK73GB1J101J	CHIP R	100	J 1/16W
R36			RK73GB1J561J	CHIP R	560	J 1/16W
R37			RK73GB1J104J	CHIP R	100K	J 1/16W

L: Scandinavia K: USA P: Canada R: Mexico C: China I: Malaysia
 Y: PX(Far East,Hawaii) T: England E: Europe G: Germany V: China(Shanghai)
 Y: AAFES(Europe) X: Australia Q: Russia H: Korea M: Other Areas Δ indicates safety critical components.

PARTS LIST

VRS-6100

* New Parts
Parts without **Parts No.** are not supplied.
Les articles non mentionnés dans le **Parts No.** ne sont pas fournis.
Teile ohne **Parts No.** werden nicht geliefert.

5

Ref. No	Add-ress	New Parts	Parts No.	Description	Desti-nation	Re-marks
R38			RK73GB1J471J	CHIP R 470 J 1/16W		
R39			RK73GB1J391J	CHIP R 390 J 1/16W		
R40			RK73GB1J471J	CHIP R 470 J 1/16W		
R41			RK73GB1J104J	CHIP R 100K J 1/16W		
R42			RK73GB1J101J	CHIP R 100 J 1/16W		
R43, 44			RK73GB1J104J	CHIP R 100K J 1/16W		
R45 -47			RK73GB1J391J	CHIP R 390 J 1/16W		
R48			RK73GB1J104J	CHIP R 100K J 1/16W		
R49			RK73GB1J391J	CHIP R 390 J 1/16W		
R50 -53			RK73GB1J104J	CHIP R 100K J 1/16W		
R54 -56			RK73GB1J391J	CHIP R 390 J 1/16W		
R57 -59			RK73GB1J101J	CHIP R 100 J 1/16W		
R60			RK73GB1J391J	CHIP R 390 J 1/16W		
R61 -64			RK73GB1J104J	CHIP R 100K J 1/16W		
R65			RK73GB1J222J	CHIP R 2.2K J 1/16W		
R66, 67			RK73GB1J104J	CHIP R 100K J 1/16W		
R68			RK73GB1J473J	CHIP R 47K J 1/16W		
R69			RK73GB1J222J	CHIP R 2.2K J 1/16W		
R70, 71			RK73GB1J104J	CHIP R 100K J 1/16W		
R72 -78			RK73GB1J101J	CHIP R 100 J 1/16W		
R79, 80			RK73GB1J104J	CHIP R 100K J 1/16W		
R81 -86			RK73GB1J101J	CHIP R 100 J 1/16W		
R87 -89			RK73GB1J104J	CHIP R 100K J 1/16W		
R90			RK73GB1J101J	CHIP R 100 J 1/16W		
R92 -94			RK73GB1J104J	CHIP R 100K J 1/16W		
R96 -104			RK73GB1J104J	CHIP R 100K J 1/16W		
R105-108			RK73GB1J101J	CHIP R 100 J 1/16W		
R109-115			RK73GB1J104J	CHIP R 100K J 1/16W		
R116-119			RK73GB1J101J	CHIP R 100 J 1/16W		
R120			RK73GB1J104J	CHIP R 100K J 1/16W		
R121, 122			RK73GB1J102J	CHIP R 1.0K J 1/16W		
R123			RK73GB1J104J	CHIP R 100K J 1/16W		
R124			RK73GB1J1R0J	CHIP R 1 J 1/16W		
R125-127			RK73GB1J472J	CHIP R 4.7K J 1/16W		
R131			RK73GB1J473J	CHIP R 47K J 1/16W		
R132			RK73GB1J101J	CHIP R 100 J 1/16W		
R201,202			RK73GB1J101J	CHIP R 100 J 1/16W		
R203-210			RK73GB1J104J	CHIP R 100K J 1/16W		
R211,212			RK73GB1J752J	CHIP R 7.5K J 1/16W		
R213			RK73GB1J4R7J	CHIP R 4.7 J 1/16W		
R214-218			RK73GB1J101J	CHIP R 100 J 1/16W		
R219			RK73GB1J104J	CHIP R 100K J 1/16W		
R220			RK73GB1J333J	CHIP R 33K J 1/16W		
R221			RK73GB1J102J	CHIP R 1.0K J 1/16W		
R222			RK73GB1J162J	CHIP R 1.6K J 1/16W		
R223			RK73GB1J333J	CHIP R 33K J 1/16W		
R225,226			RK73GB1J104J	CHIP R 100K J 1/16W		
R227,228			RK73GB1J333J	CHIP R 33K J 1/16W		
R229,230			RK73GB1J332J	CHIP R 3.3K J 1/16W		
R231,232			RK73GB1J103J	CHIP R 10K J 1/16W		
R233			RK73GB1J221J	CHIP R 220 J 1/16W		
R235,236			RK73GB1J221J	CHIP R 220 J 1/16W		
R237-241			RK73GB1J101J	CHIP R 100 J 1/16W		
R251,252			RK73GB1J681J	CHIP R 680 J 1/16W		
R253,254			RK73GB1J101J	CHIP R 100 J 1/16W		

L : Scandinavia K : USA P : Canada R : Mexico C : China I : Malaysia
Y : PX(Far East,Hawaii) T : England E : Europe G : Germany V : China(Shanghai)
Y : AAFES(Europe) X : Australia Q : Russia H : Korea M : Other Areas Δ indicates safety critical components .

* New Parts
Parts without **Parts No.** are not supplied.
Les articles non mentionnés dans le **Parts No.** ne sont pas fournis.
Teile ohne **Parts No.** werden nicht geliefert.

5

Ref. No	Add-ress	New Parts	Parts No.	Description	Desti-nation	Re-marks
R255,256			RK73GB1J103J	CHIP R 10K J 1/16W		
R257			RK73GB1J101J	CHIP R 100 J 1/16W		
R259,260			RK73GB1J473J	CHIP R 47K J 1/16W		
R261,262			RK73GB1J3R3J	CHIP R 3.3 J 1/16W		
R301			RK73GB1J103J	CHIP R 10K J 1/16W		
R302			RK73GB1J102J	CHIP R 1.0K J 1/16W		
R303,304			RK73GB1J104J	CHIP R 100K J 1/16W		
R305			RK73GB1J102J	CHIP R 1.0K J 1/16W		
R306			RK73GB1J1R0J	CHIP R 1 J 1/16W		
R307			RK73GB1J434J	CHIP R 430K J 1/16W		
R308			RK73GB1J754J	CHIP R 750K J 1/16W		
R309			RK73GB1J102J	CHIP R 1.0K J 1/16W		
R311			RK73EB2B100J	CHIP R 10 J 1/8W		
R401,402			RK73GB1J102J	CHIP R 1.0K J 1/16W		
R403,404			RK73GB1J224J	CHIP R 220K J 1/16W		
R405,406			RK73GB1J101J	CHIP R 100 J 1/16W		
R407,408			RK73GB1J104J	CHIP R 100K J 1/16W		
R409-412			RK73GB1J222J	CHIP R 2.2K J 1/16W		
R413,414			RK73GB1J102J	CHIP R 1.0K J 1/16W		
R415,416			RK73GB1J224J	CHIP R 220K J 1/16W		
R417,418			RK73GB1J102J	CHIP R 1.0K J 1/16W		
R419,420			RK73GB1J224J	CHIP R 220K J 1/16W		
R421,422			RK73GB1J102J	CHIP R 1.0K J 1/16W		
R423,424			RK73GB1J224J	CHIP R 220K J 1/16W		
R425			RK73GB1J101J	CHIP R 100 J 1/16W		
R426			RK73GB1J104J	CHIP R 100K J 1/16W		
R427,428			RK73GB1J222J	CHIP R 2.2K J 1/16W		
R429			RK73GB1J750J	CHIP R 75 J 1/16W		
R430			RK73GB1J4R7J	CHIP R 4.7 J 1/16W		
R601			RK73GB1J470J	CHIP R 47 J 1/16W		
R602			RK73GB1J221J	CHIP R 220 J 1/16W		
R603,604			RK73GB1J105J	CHIP R 1.0M J 1/16W		
R605			RK73GB1J103J	CHIP R 10K J 1/16W		
R608			RK73GB1J221J	CHIP R 220 J 1/16W		
R609			RK73GB1J104J	CHIP R 100K J 1/16W		
R610			RK73GB1J470J	CHIP R 47 J 1/16W		
R611,612			RK73GB1J332J	CHIP R 3.3K J 1/16W		
R613,614			RK73GB1J221J	CHIP R 220 J 1/16W		
R615,616			RK73GB1J151J	CHIP R 150 J 1/16W		
R617			RK73GB1J4R7J	CHIP R 4.7 J 1/16W		
R623			RK73GB1J103J	CHIP R 10K J 1/16W		
R624			RK73GB1J221J	CHIP R 220 J 1/16W		
R625,626			RK73GB1J332J	CHIP R 3.3K J 1/16W		
R627,628			RK73GB1J221J	CHIP R 220 J 1/16W		
R629			RK73GB1J103J	CHIP R 10K J 1/16W		
R630			RK73GB1J333J	CHIP R 33K J 1/16W		
R631			RK73GB1J101J	CHIP R 100 J 1/16W		
R632,633			RK73GB1J472J	CHIP R 4.7K J 1/16W		
R634			RK73GB1J471J	CHIP R 470 J 1/16W		
R637,638			RK73GB1J220J	CHIP R 22 J 1/16W		
R639			RK73GB1J183J	CHIP R 18K J 1/16W		
R640			R92-1946-05	METAL GLAZE 4.7 J 1/4W		
R641			RD14NB2E1R0J	RD 1 J 1/4W		
R642			RK73GB1J220J	CHIP R 22 J 1/16W		
R643			RK73GB1J2R2J	CHIP R 2.2 J 1/16W		

L : Scandinavia K : USA P : Canada R : Mexico C : China I : Malaysia
Y : PX(Far East,Hawaii) T : England E : Europe G : Germany V : China(Shanghai)
Y : AAFES(Europe) X : Australia Q : Russia H : Korea M : Other Areas Δ indicates safety critical components .

* New Parts

Parts without **Parts No.** are not supplied.

Les articles non mentionnés dans le **Parts No.** ne sont pas fournis.

Teile ohne **Parts No.** werden nicht geliefert.



Ref. No	Add-ress	New Parts	Parts No.	Description	Quantity	Unit	Desti-nation	Re-marks
R651-656 R657,658			RK73GB1J220J RK73GB1J221J	CHIP R CHIP R	22 220	J J	1/16W 1/16W	
R663 R664 R665 △ R666 R667			RK73GB1J221J R92-1993-05 RK73GB1J223J RS14KB3D180J RK73GB1J221J	CHIP R METAL GLAZE CHIP R FL-PROOF RS CHIP R	220 560 22K 18 220	J J J J J	1/16W 1/4W 1/16W 2W 1/16W	
△ R670 △ R671 R672 R673 R674			R92-1945-05 RD14NB2E1R0J RK73GB1J221J RK73GB1J102J RK73GB1J472J	METAL GLAZE RD CHIP R CHIP R CHIP R	1 1 220 1.0K 4.7K	J J J J J	1/4W 1/4W 1/16W 1/16W 1/16W	
R675 R676 R677 R678,679 R680			RK73GB1J221J RK73GB1J102J RK73GB1J152J RK73GB1J220J RK73GB1J471J	CHIP R CHIP R CHIP R CHIP R CHIP R	220 1.0K 1.5K 22 470	J J J J J	1/16W 1/16W 1/16W 1/16W 1/16W	
R683,684 R685 R689 R690 R692			RK73GB1J471J RK73GB1J47R7J RK73GB1J220J RK73GB1J101J RK73GB1J220J	CHIP R CHIP R CHIP R CHIP R CHIP R	470 4.7 22 100 22	J J J J J	1/16W 1/16W 1/16W 1/16W 1/16W	
R693 R694 R701,702 R703,704 R705,706			RK73GB1J101J RK73GB1J221J RK73GB1J222J RK73GB1J104J RK73GB1J222J	CHIP R CHIP R CHIP R CHIP R CHIP R	100 220 2.2K 100K 2.2K	J J J J J	1/16W 1/16W 1/16W 1/16W 1/16W	
R707,708 R709,710 R711,712 R713,714 R715,716			RK73GB1J103J RK73GB1J472J RK73GB1J332J RK73GB1J104J RK73GB1J222J	CHIP R CHIP R CHIP R CHIP R CHIP R	10K 4.7K 3.3K 100K 2.2K	J J J J J	1/16W 1/16W 1/16W 1/16W 1/16W	
R717,718 R719,720 R721 R722 R723,724			RK73GB1J272J RK73GB1J562J RK73GB1J222J RK73GB1J153J RK73GB1J104J	CHIP R CHIP R CHIP R CHIP R CHIP R	2.7K 5.6K 2.2K 15K 100K	J J J J J	1/16W 1/16W 1/16W 1/16W 1/16W	
R725 R726 R727,728 R729 R730			RK73GB1J222J RK73GB1J183J RK73GB1J103J RK73GB1J472J RK73GB1J562J	CHIP R CHIP R CHIP R CHIP R CHIP R	2.2K 18K 10K 4.7K 5.6K	J J J J J	1/16W 1/16W 1/16W 1/16W 1/16W	
R731,732 R733 R735-740 R741-745 R746-748			RK73GB1J223J RK73GB1J47R7J RK73GB1J103J RK73GB1J221J RK73GB1J101J	CHIP R CHIP R CHIP R CHIP R CHIP R	22K 4.7 10K 220 100	J J J J J	1/16W 1/16W 1/16W 1/16W 1/16W	
R749,750 R751,752 R753,754 R755,756 R757-759			RK73GB1J272J RK73GB1J472J RK73GB1J562J RK73GB1J103J RK73GB1J563J	CHIP R CHIP R CHIP R CHIP R CHIP R	2.7K 4.7K 5.6K 10K 56K	J J J J J	1/16W 1/16W 1/16W 1/16W 1/16W	
R763,764 R765,766 R767,768			RK73GB1J104J RK73GB1J222J RK73GB1J103J	CHIP R CHIP R CHIP R	100K 2.2K 10K	J J J	1/16W 1/16W 1/16W	

L: Scandinavia K: USA P: Canada R: Mexico C: China I: Malaysia
 Y: PX(Far East,Hawaii) T: England E: Europe G: Germany V: China(Shanghai)
 Y: AAFES(Europe) X: Australia Q: Russia H: Korea M: Other Areas △ indicates safety critical components.

* New Parts

Parts without **Parts No.** are not supplied.

Les articles non mentionnés dans le **Parts No.** ne sont pas fournis.

Teile ohne **Parts No.** werden nicht geliefert.



Ref. No	Add-ress	New Parts	Parts No.	Description	Quantity	Unit	Desti-nation	Re-marks
R769,770 R771,772			RK73GB1J222J RK73GB1J221J	CHIP R CHIP R	2.2K 220	J J	1/16W 1/16W	
R779,780 R791,792 R793-804 R805-808 R809-811			RK73GB1J222J RK73GB1J183J RK73GB1J220J R92-1945-05 RK73FB2A1R0J	CHIP R CHIP R CHIP R METAL GLAZE CHIP R	2.2K 18K 22 1 1	J J J J J	1/16W 1/16W 1/16W 1/4W 1/10W	
R812-814			RK73GB1J1R5J	CHIP R	1.5	J	1/16W	
D1 -4 D251,252 D251,252 D301 D302			MA111 HZU7.5(B2) UDZS7.5B MA111 1SS402	DIODE ZENER DIODE ZENER DIODE DIODE DIODE				
D303-305 D306 D601 D602 D602			MA111 S5688B(TPB5) MA111 DAN202U 1SS301	DIODE DIODE DIODE DIODE DIODE				
D603 D603 D604 D604 D605			DAP202U 1SS300 HZU3.9(B2) UDZS3.9B MA111	DIODE DIODE ZENER DIODE ZENER DIODE DIODE				
D606,607 D606,607 D608 D610 D610			HZU5.6(B2) UDZS5.6B MA111 HZU5.1(B2) UDZS5.1B	ZENER DIODE ZENER DIODE DIODE ZENER DIODE ZENER DIODE				
D611 D611 IC1 IC201 IC202,203			HZU3.3(B2) UDZS3.3B MN101C49KLH M61516FP NJM4565MD	ZENER DIODE ZENER DIODE MICROCONTROLLER IC ANALOGUE IC ANALOGUE IC				
△ IC301 IC302 IC601 IC602 IC603			XC61CN4002MR XC62HR5102P CS493263-CLG AK4586 TC7WU04FU	ANALOGUE IC ANALOGUE IC MOS-IC MOS-IC MOS-IC				
IC604 IC605 IC606 IC607 △ IC609			TC7WH123FU TC74HCT7007AF TC74HC07AF AK4384 XC62EP2502MR	MOS-IC MOS-IC MOS-IC MOS-IC ANALOGUE IC				
△ IC611 △ IC612 IC701-703 IC705 IC707,708			XC6201P332PR BA05T NJM4565MD TC74HC4066AF NJM4565MD	ANALOGUE IC ANALOGUE IC ANALOGUE IC MOS-IC ANALOGUE IC				
IC805 Q1 Q1 △ Q251 △ Q252			M24C02WMN-1ASA DTC124EUA KRC403 2SC2003(L,K) 2SA954(L,K)	ROM IC DIGITAL TRANSISTOR DIGITAL TRANSISTOR TRANSISTOR TRANSISTOR				
Q253			2SC4081(R,S)	TRANSISTOR				

L: Scandinavia K: USA P: Canada R: Mexico C: China I: Malaysia
 Y: PX(Far East,Hawaii) T: England E: Europe G: Germany V: China(Shanghai)
 Y: AAFES(Europe) X: Australia Q: Russia H: Korea M: Other Areas △ indicates safety critical components.

PARTS LIST

VRS-6100

* New Parts
Parts without **Parts No.** are not supplied.
Les articles non mentionnés dans le **Parts No.** ne sont pas fournis.
Teile ohne **Parts No.** werden nicht geliefert.



Ref. No	Add-ress	New Parts	Parts No.	Description	Desti-nation	Re-marks
Q253			2SD1819A(Q,R)	TRANSISTOR		
Q254			2SA1576A(R,S)	TRANSISTOR		
Q255			DTC124EUA	DIGITAL TRANSISTOR		
Q255			KRC403	DIGITAL TRANSISTOR		
Q256			2SA1576A(R,S)	TRANSISTOR		
Q301			KTC3199(Y,GR)	TRANSISTOR		
Q301			2SC1740S(Q,R)	TRANSISTOR		
Q301			2SC2785(F,E)	TRANSISTOR		
Q302			2SA1576A(R,S)	TRANSISTOR		
Q401,402			2SC2878(B)	TRANSISTOR		
Q403			2SC4213(B)	TRANSISTOR		
Q601			DTC124EUA	DIGITAL TRANSISTOR		
Q601			KRC403	DIGITAL TRANSISTOR		
Q606			2SB1375	TRANSISTOR		
Q608			2SC4081(R,S)	TRANSISTOR		
Q608			2SD1819A(Q,R)	TRANSISTOR		
Q609			2SA1576A(R,S)	TRANSISTOR		
Q701,702			DTC124EUA	DIGITAL TRANSISTOR		
Q701,702			KRC403	DIGITAL TRANSISTOR		
A1		*	W02-4546-05	OPTIC RECEIVING MODULE		
AUDIO X09-6890-10						
C1 -4			CE04KW1H2R2M	ELECTRO	2.2UF	50WV
C5 ,6			CK73GB1H471K	CHIP C	470PF	K
C7 ,8			CC73GCH1H220J	CHIP C	22PF	J
C9 ,10			CC73GCH1H030C	CHIP C	3.0PF	C
C11 ,12			CE04KW1A101M	ELECTRO	100UF	10WV
C13 ,14			C91-1567-05	FILM	0.1UF	J
C15 ,16			CC73GCH1H330J	CHIP C	33PF	J
C17 ,18			CK73GB1H222K	CHIP C	2200PF	K
C19 ,20			CC73GCH1H470J	CHIP C	47PF	J
C21 ,22			CC73GCH1H100D	CHIP C	10PF	D
C31			CE04KW1H2R2M	ELECTRO	2.2UF	50WV
C32			CK73GB1H471K	CHIP C	470PF	K
C33			CC73GCH1H220J	CHIP C	22PF	J
C34			CC73GCH1H030C	CHIP C	3.0PF	C
C35			CE04KW1A101M	ELECTRO	100UF	10WV
C36			C91-1567-05	FILM	0.1UF	J
C38			CK73GB1H222K	CHIP C	2200PF	K
C39			CC73GCH1H470J	CHIP C	47PF	J
C40			CC73GCH1H100D	CHIP C	10PF	D
C41			CE04KW1H2R2M	ELECTRO	2.2UF	50WV
C51 ,52			CE04KW1H2R2M	ELECTRO	2.2UF	50WV
C53 ,54			CK73GB1H471K	CHIP C	470PF	K
C55 ,56			CC73GCH1H220J	CHIP C	22PF	J
C57 ,58			CC73GCH1H100D	CHIP C	10PF	D
C59 ,60			CE04KW1A101M	ELECTRO	100UF	10WV
C61 -64			CK73GB1H104K	CHIP C	0.10UF	K
C65 ,66			CK73GB1H222K	CHIP C	2200PF	K
C67 ,68			CC73GCH1H470J	CHIP C	47PF	J
C69 ,70			CE04KW1H2R2M	ELECTRO	2.2UF	50WV
C101,102			CK73GB1H472K	CHIP C	4700PF	K
C103			CE04KW1A101M	ELECTRO	100UF	10WV
C131			CK73GB1H472K	CHIP C	4700PF	K

L : Scandinavia K : USA P : Canada R : Mexico C : China I : Malaysia
Y : PX(Far East,Hawaii) T : England E : Europe G : Germany V : China(Shanghai)
Y : AAFES(Europe) X : Australia Q : Russia H : Korea M : Other Areas Δ indicates safety critical components .



* New Parts
Parts without **Parts No.** are not supplied.
Les articles non mentionnés dans le **Parts No.** ne sont pas fournis.
Teile ohne **Parts No.** werden nicht geliefert.

Ref. No	Add-ress	New Parts	Parts No.	Description	Desti-nation	Re-marks
C132			CE04KW1A101M	ELECTRO	100UF	10WV
C151,152			CK73GB1H472K	CHIP C	4700PF	K
C191			CE04KW1A221M	ELECTRO	220UF	10WV
C192			CE04KW1H4R7M	ELECTRO	4.7UF	50WV
C223,224			C90-3416-05	ALMINIUM ELECTROLYTIC C.		
C251,252			CC73GCH1H470J	CHIP C	47PF	J
C253-256			CE04KW1H470M	ELECTRO	47UF	50WV
C257			CE04KW1A101M	ELECTRO	100UF	10WV
C258			CE04KW1H2R2M	ELECTRO	2.2UF	50WV
C259			CE04KW1J330M	ELECTRO	33UF	63WV
C260			CE04KW1J470M	ELECTRO	47UF	63WV
C281			CE04HW1E220M	NP-ELEC	22UF	25WV
C282			CE04KW1E470M	ELECTRO	47UF	25WV
C291			CE04KW1A221M	ELECTRO	220UF	10WV
C292			CE04KW1H4R7M	ELECTRO	4.7UF	50WV
C301-303			CC73GCH1H101J	CHIP C	100PF	J
C321			CE04KW1H101M	ELECTRO	100UF	50WV
Δ C401,402		*	C90-5812-05	ALMINIUM ELECTROLYTIC C.		
C403,404			CK45FE2H103P	CERAMIC	0.010UF	P
C411,412		*	C90-5813-05	ALMINIUM ELECTROLYTIC C.		
C413,414			CK45FE2H103P	CERAMIC	0.010UF	P
C421			CE04KW1H100M	ELECTRO	10UF	50WV
C422			CE04KW1V330M	ELECTRO	33UF	35WV
C423			CC73GCH1H100D	CHIP C	10PF	D
C451			CE04KW1E222M	ELECTRO	2200UF	25WV
C452			CE04KW1E102M	ELECTRO	1000UF	25WV
C453,454			CE04KW1E101M	ELECTRO	100UF	25WV
C455,456			CK73GB1H104K	CHIP C	0.10UF	K
C457,458			CC73GCH1H100D	CHIP C	10PF	D
C461			CE04KW1C472M	ELECTRO	4700UF	16WV
C462			CK73GB1H103K	CHIP C	0.010UF	K
C471			CK73GF1E104Z	CHIP C	0.10UF	Z
C472			CE04KW1E101M	ELECTRO	100UF	25WV
C473			CK73GB1H102K	CHIP C	1000PF	K
C474,475			CK73GB1H103K	CHIP C	0.010UF	K
C501,502			CC73GCH1H470J	CHIP C	47PF	J
C503,504			CE04KW1E470M	ELECTRO	47UF	25WV
C505,506			CC73GCH1H470J	CHIP C	47PF	J
C507			CE04KW1E470M	ELECTRO	47UF	25WV
C511,512			CE04KW1H100M	ELECTRO	10UF	50WV
C601			CE04KW1A471M	ELECTRO	470UF	10WV
C602			CK73GB1H103K	CHIP C	0.010UF	K
Δ C603,604			C91-1488-05	MF	6800PF	250VAC
C611			CK73GF1E104Z	CHIP C	0.10UF	Z
C621			CK73GB1H103K	CHIP C	0.010UF	K
C701,702			CC73GCH1H100D	CHIP C	10PF	D
C711			CC73GCH1H100D	CHIP C	10PF	D
C721,722			CC73GCH1H101J	CHIP C	100PF	J
CN1		*	E41-0930-05	PIN ASSY		
CN2			E40-4894-05	FLAT CABLE CONNECTOR		
CN3			E40-4908-05	FLAT CABLE CONNECTOR		
CN401		*	E41-1012-05	PIN ASSY		
CN451		*	E41-0932-05	PIN ASSY		
CN471			E41-0927-05	PIN ASSY		

L : Scandinavia K : USA P : Canada R : Mexico C : China I : Malaysia
Y : PX(Far East,Hawaii) T : England E : Europe G : Germany V : China(Shanghai)
Y : AAFES(Europe) X : Australia Q : Russia H : Korea M : Other Areas Δ indicates safety critical components .

* New Parts

Parts without **Parts No.** are not supplied.

Les articles non mentionnés dans le **Parts No.** ne sont pas fournis.

Teile ohne **Parts No.** werden nicht geliefert.

11

Ref. No	Add-ress	New Parts	Parts No.	Description	Desti-nation	Re-marks
CN601,602		*	E41-0969-05	PIN ASSY		
J1		*	E70-0193-05	LOCK TERMINAL BOARD		
J2		*	E70-0194-05	LOCK TERMINAL BOARD		
J501		*	E63-1343-05	PIN JACK		
WH1		*	E35-3639-05	WIRING HARNESS		
WH601		*	E35-3638-05	WIRING HARNESS		
△ F601		*	F50-0223-05	FUSE(5X20)		
CN603,604			J13-0075-05	FUSE CLIP		
L1 ,2			L39-1373-05	PHASE COMPENSATION COIL		
L31			L39-1373-05	PHASE COMPENSATION COIL		
L51 ,52			L39-1373-05	PHASE COMPENSATION COIL		
△ T601			L07-2758-05	POWER TRANSFORMER		
R1 ,2			RK73GB1J222J	CHIP R	2.2K	J 1/16W
R3 ,4			RK73GB1J104J	CHIP R	100K	J 1/16W
R9 ,10			RK73GB1J683J	CHIP R	68K	J 1/16W
R11 ,12			RK73GB1J101J	CHIP R	100	J 1/16W
R13 -16			RS14KB3DR22J	FL-PROOF RS	0.22	J 2W
R17 ,18			RK73GB1J102J	CHIP R	1.0K	J 1/16W
R19 ,20			RK73GB1J683J	CHIP R	68K	J 1/16W
R21 ,22			RK73GB1J122J	CHIP R	1.2K	J 1/16W
R23 ,24			RD14NB2E4R7J	RD	4.7	J 1/4W
R25 ,26			RS14KB3D4R7J	FL-PROOF RS	4.7	J 2W
R27 ,28			RS14KB3D681J	FL-PROOF RS	680	J 2W
R29 ,30			RK73GB1J181J	CHIP R	180	J 1/16W
R31			RK73GB1J222J	CHIP R	2.2K	J 1/16W
R32			RK73GB1J104J	CHIP R	100K	J 1/16W
R33			RK73GB1J683J	CHIP R	68K	J 1/16W
R34			RK73GB1J101J	CHIP R	100	J 1/16W
R35 ,36			RS14KB3DR22J	FL-PROOF RS	0.22	J 2W
R37			RK73GB1J102J	CHIP R	1.0K	J 1/16W
R38			RK73GB1J683J	CHIP R	68K	J 1/16W
R39			RK73GB1J621J	CHIP R	620	J 1/16W
R40			RD14NB2E4R7J	RD	4.7	J 1/4W
R41			RS14KB3D4R7J	FL-PROOF RS	4.7	J 2W
R42			RK73GB1J181J	CHIP R	180	J 1/16W
R51 ,52			RK73GB1J104J	CHIP R	100K	J 1/16W
R53 ,54			RK73GB1J222J	CHIP R	2.2K	J 1/16W
R55 ,56			RK73GB1J683J	CHIP R	68K	J 1/16W
R57 ,58			RK73GB1J101J	CHIP R	100	J 1/16W
R59 -62			RS14KB3DR22J	FL-PROOF RS	0.22	J 2W
R63 ,64			RK73GB1J102J	CHIP R	1.0K	J 1/16W
R65 ,66			RK73GB1J683J	CHIP R	68K	J 1/16W
R67 ,68			RK73GB1J621J	CHIP R	620	J 1/16W
R69 ,70			RD14NB2E4R7J	RD	4.7	J 1/4W
R71 ,72			RS14KB3D4R7J	FL-PROOF RS	4.7	J 2W
R81 -84			RK73GB1J1R0J	CHIP R	1	J 1/16W
R91 ,92			RS14KB3D681J	FL-PROOF RS	680	J 2W
R105,106			RK73GB1J102J	CHIP R	1.0K	J 1/16W
R107,108			RK73GB1J333J	CHIP R	33K	J 1/16W
R109,110			RK73GB1J103J	CHIP R	10K	J 1/16W
R111,112			RK73GB1J471J	CHIP R	470	J 1/16W
R113,114			RK73GB1J333J	CHIP R	33K	J 1/16W

L : Scandinavia K : USA P : Canada R : Mexico C : China I : Malaysia
 Y : PX(Far East,Hawaii) T : England E : Europe G : Germany V : China(Shanghai)
 Y : AAFES(Europe) X : Australia Q : Russia H : Korea M : Other Areas △ indicates safety critical components .

* New Parts

Parts without **Parts No.** are not supplied.

Les articles non mentionnés dans le **Parts No.** ne sont pas fournis.

Teile ohne **Parts No.** werden nicht geliefert.

12

Ref. No	Add-ress	New Parts	Parts No.	Description	Desti-nation	Re-marks
R115,116			RK73GB1J103J	CHIP R	10K	J 1/16W
R117			RK73GB1J122J	CHIP R	1.2K	J 1/16W
R131			RK73GB1J102J	CHIP R	1.0K	J 1/16W
R132			RK73GB1J333J	CHIP R	33K	J 1/16W
R133			RK73GB1J103J	CHIP R	10K	J 1/16W
R134			RK73GB1J471J	CHIP R	470	J 1/16W
R135			RK73GB1J333J	CHIP R	33K	J 1/16W
R136			RK73GB1J153J	CHIP R	15K	J 1/16W
R137			RK73GB1J122J	CHIP R	1.2K	J 1/16W
R151,152			RK73GB1J102J	CHIP R	1.0K	J 1/16W
R153,154			RK73GB1J333J	CHIP R	33K	J 1/16W
R155,156			RK73GB1J103J	CHIP R	10K	J 1/16W
R157,158			RK73GB1J471J	CHIP R	470	J 1/16W
R159,160			RK73GB1J333J	CHIP R	33K	J 1/16W
R161,162			RK73GB1J153J	CHIP R	15K	J 1/16W
R191			RK73GB1J102J	CHIP R	1.0K	J 1/16W
R192			RK73GB1J103J	CHIP R	10K	J 1/16W
R193			RK73GB1J332J	CHIP R	3.3K	J 1/16W
R194			RK73GB1J153J	CHIP R	15K	J 1/16W
R195			RK73GB1J222J	CHIP R	2.2K	J 1/16W
R201,202			RS14KB3A472J	FL-PROOF RS	4.7K	J 1W
R203			RD14BB2E333J	RD	33K	J 1/4W
R211,212			RS14KB3A472J	FL-PROOF RS	4.7K	J 1W
R213			RD14BB2E333J	RD	33K	J 1/4W
R223,224			RK73GB1J1R0J	CHIP R	1	J 1/16W
R251,252			RD14NB2E272J	RD	2.7K	J 1/4W
R253,254			RD14NB2E1R0J	RD	1	J 1/4W
△ R255,256			RS14KB3D332J	FL-PROOF RS	3.3K	J 2W
R257,258			RK73GB1J683J	CHIP R	68K	J 1/16W
R259			RK73GB1J101J	CHIP R	100	J 1/16W
R260			RK73GB1J472J	CHIP R	4.7K	J 1/16W
R262			RK73GB1J473J	CHIP R	47K	J 1/16W
R263			RK73GB1J101J	CHIP R	100	J 1/16W
R264			RK73GB1J683J	CHIP R	68K	J 1/16W
R265			RK73GB1J103J	CHIP R	10K	J 1/16W
R266,267			RK73GB1J473J	CHIP R	47K	J 1/16W
R268			RK73GB1J153J	CHIP R	15K	J 1/16W
R269			RK73GB1J470J	CHIP R	47	J 1/16W
R270			RK73GB1J101J	CHIP R	100	J 1/16W
R275,276			RD14NB2E222J	RD	2.2K	J 1/4W
R281			RD14NB2E102J	RD	1.0K	J 1/4W
R282,283			RK73GB1J103J	CHIP R	10K	J 1/16W
R284			RK73GB1J471J	CHIP R	470	J 1/16W
R285			RK73GB1J104J	CHIP R	100K	J 1/16W
R286			RK73GB1J102J	CHIP R	1.0K	J 1/16W
R291			RK73GB1J102J	CHIP R	1.0K	J 1/16W
R292			RK73GB1J103J	CHIP R	10K	J 1/16W
R293			RK73GB1J332J	CHIP R	3.3K	J 1/16W
R294			RK73GB1J153J	CHIP R	15K	J 1/16W
R295			RK73GB1J222J	CHIP R	2.2K	J 1/16W
△ R301-303			RD14NB2E181J	RD	180	J 1/4W
R311			RK73GB1J333J	CHIP R	33K	J 1/16W
△ R321			RD14NB2E330J	RD	33	J 1/4W
R401,402			RK73GB1J104J	CHIP R	100K	J 1/16W
R411,412			RK73GB1J473J	CHIP R	47K	J 1/16W

L : Scandinavia K : USA P : Canada R : Mexico C : China I : Malaysia
 Y : PX(Far East,Hawaii) T : England E : Europe G : Germany V : China(Shanghai)
 Y : AAFES(Europe) X : Australia Q : Russia H : Korea M : Other Areas △ indicates safety critical components .

PARTS LIST

VRS-6100

* New Parts
Parts without **Parts No.** are not supplied.
Les articles non mentionnés dans le **Parts No.** ne sont pas fournis.
Teile ohne **Parts No.** werden nicht geliefert.

13

Ref. No	Address	New Parts	Parts No.	Description	Destination	Remarks
Δ R421			RD14NB2E101J	RD 100 J 1/4W		
R422			RK73EB2B103J	CHIP R 10K J 1/8W		
R423			RK73GB1J222J	CHIP R 2.2K J 1/16W		
Δ R451,452			RD14NB2E1R0J	RD 1 J 1/4W		
R453,454			RK73GB1J473J	CHIP R 47K J 1/16W		
Δ R471			RK73GB1J4R7J	CHIP R 4.7 J 1/16W		
R472			RK73GB1J103J	CHIP R 10K J 1/16W		
R473			RK73GB1J223J	CHIP R 22K J 1/16W		
R474			RK73GB1J103J	CHIP R 10K J 1/16W		
R475,476			RK73GB1J472J	CHIP R 4.7K J 1/16W		
R477			RK73GB1J474J	CHIP R 470K J 1/16W		
R501-504			RD14BB2C750J	RD 75 J 1/6W		
R505,506			RK73GB1J104J	CHIP R 100K J 1/16W		
Δ R511,512			RD14BB2E221J	RD 220 J 1/4W		
R513,514			RK73GB1J100J	CHIP R 10 J 1/16W		
R515-517			RK73GB1J101J	CHIP R 100 J 1/16W		
R518			RK73GB1J4R7J	CHIP R 4.7 J 1/16W		
Δ R601			R92-1844-05	CARBON 3.3M J 1/2W		
R611			RK73GB1J223J	CHIP R 22K J 1/16W		
R612			RK73GB1J104J	CHIP R 100K J 1/16W		
R613			RD14NB2E470J	RD 47 J 1/4W		
R621			RK73GB1J222J	CHIP R 2.2K J 1/16W		
R622			RK73GB1J223J	CHIP R 22K J 1/16W		
R701,702			RK73GB1J121J	CHIP R 120 J 1/16W		
R711			RK73GB1J121J	CHIP R 120 J 1/16W		
Δ R721,722			RK73GB1J100J	CHIP R 10 J 1/16W		
Δ K301-303			S76-0098-05	MAGNETIC RELAY		
K601			S76-0102-05	MAGNETIC RELAY		
D101,102			HSS104A	DIODE		
D101,102			1SS133	DIODE		
D131			HSS104A	DIODE		
D131			1SS133	DIODE		
D151,152			HSS104A	DIODE		
D151,152			1SS133	DIODE		
D191,192			HSS104A	DIODE		
D191,192			1SS133	DIODE		
D193			MTZJ4.7(B)	ZENER DIODE		
D193			RD4.7ES(B2)	ZENER DIODE		
D201,202			MTZJ15(B)	ZENER DIODE		
D201,202			RD15ES(B2)	ZENER DIODE		
D211,212			MTZJ15(B)	ZENER DIODE		
D211,212			RD15ES(B2)	ZENER DIODE		
D251-254			MTZJ11(B)	ZENER DIODE		
D251-254			RD11ES(B2)	ZENER DIODE		
D255,256			HSS104A	DIODE		
D255,256			1SS133	DIODE		
D257			MTZJ3.9(B)	ZENER DIODE		
D257			RD3.9ES(B2)	ZENER DIODE		
D258			HSS104A	DIODE		
D258			1SS133	DIODE		
D259,260			S5688B(TPB5)	DIODE		
D281			MTZJ4.7(B)	ZENER DIODE		
D281			RD4.7ES(B2)	ZENER DIODE		
D291			MTZJ4.7(B)	ZENER DIODE		

L : Scandinavia K : USA P : Canada R : Mexico C : China I : Malaysia
Y : PX(Far East,Hawaii) T : England E : Europe G : Germany V : China(Shanghai)
Y : AAFES(Europe) X : Australia Q : Russia H : Korea M : Other Areas Δ indicates safety critical components.

* New Parts
Parts without **Parts No.** are not supplied.
Les articles non mentionnés dans le **Parts No.** ne sont pas fournis.
Teile ohne **Parts No.** werden nicht geliefert.

14

Ref. No	Address	New Parts	Parts No.	Description	Destination	Remarks
D291			RD4.7ES(B2)	ZENER DIODE		
D292,293			HSS104A	DIODE		
D292,293			1SS133	DIODE		
D301-303			HSS104A	DIODE		
D301-303			1SS133	DIODE		
D311			HSS104A	DIODE		
D311			1SS133	DIODE		
Δ D401			D5SBA20F03	DIODE		
Δ D411			D5SBA20F03	DIODE		
D421			MTZJ16(B)	ZENER DIODE		
D421			RD16ES(B2)	ZENER DIODE		
D422			MTZJ15(B)	ZENER DIODE		
D422			RD15ES(B2)	ZENER DIODE		
Δ D451			D2SBA20F03	DIODE		
Δ D461			D3SBA20F03	DIODE		
D511,512			MTZJ5.6(B)	ZENER DIODE		
D511,512			RD5.6ES(B2)	ZENER DIODE		
Δ D601			S1ZB20(4072)	DIODE		
D602			HSS104A	DIODE		
D602			1SS133	DIODE		
D611,612			HSS104A	DIODE		
D611,612			1SS133	DIODE		
Δ IC1		*	STK413-210A	HYBRID IC		
Δ IC51		*	STK412-210A	HYBRID IC		
Δ IC451			KIA7812API	ANALOGUE IC		
Δ IC452			KIA7912PI	ANALOGUE IC		
IC471			NJM2904M	ANALOGUE IC		
IC501			NJM2279M	ANALOGUE IC		
Q103,104			2SC2878(B)	TRANSISTOR		
Q105,106			2SC4081(R,S)	TRANSISTOR		
Q105,106			2SD1819A(Q,R)	TRANSISTOR		
Q131			2SC2878(B)	TRANSISTOR		
Q132			2SC4081(R,S)	TRANSISTOR		
Q132			2SD1819A(Q,R)	TRANSISTOR		
Q151,152			2SC2878(B)	TRANSISTOR		
Q153,154			2SC4081(R,S)	TRANSISTOR		
Q153,154			2SD1819A(Q,R)	TRANSISTOR		
Q191,192			2SC4081(R,S)	TRANSISTOR		
Q191,192			2SD1819A(Q,R)	TRANSISTOR		
Q193			2SA1576A(R,S)	TRANSISTOR		
Q193			2SB1218A(Q,R)	TRANSISTOR		
Δ Q251			2SD2525	TRANSISTOR		
Δ Q252			2SB1640	TRANSISTOR		
Q253			2SC1845(F,E)	TRANSISTOR		
Q254			2SA992(F,E)	TRANSISTOR		
Q255			2SC1845(F,E)	TRANSISTOR		
Q256			2SA1123(R,S)	TRANSISTOR		
Q281			2SA992(F,E)	TRANSISTOR		
Q291,292			2SC4081(R,S)	TRANSISTOR		
Q291,292			2SD1819A(Q,R)	TRANSISTOR		
Q293			2SA1576A(R,S)	TRANSISTOR		
Q293			2SB1218A(Q,R)	TRANSISTOR		
Q301-303			DTC143TUA	DIGITAL TRANSISTOR		
Q301-303			KRC410	DIGITAL TRANSISTOR		
Δ Q421			2SB1640	TRANSISTOR		

L : Scandinavia K : USA P : Canada R : Mexico C : China I : Malaysia
Y : PX(Far East,Hawaii) T : England E : Europe G : Germany V : China(Shanghai)
Y : AAFES(Europe) X : Australia Q : Russia H : Korea M : Other Areas Δ indicates safety critical components.

* New Parts

Parts without **Parts No.** are not supplied.

Les articles non mentionnés dans le **Parts No.** ne sont pas fournis.

Teile ohne **Parts No.** werden nicht geliefert.



Ref. No	Add-ress	New Parts	Parts No.	Description	Desti-nation	Re-marks
Q471			2SA1534A(R,S)	TRANSISTOR		
Q472			2SC4081(R,S)	TRANSISTOR		
Q472			2SD1819A(Q,R)	TRANSISTOR		
Q621			2SC4081(R,S)	TRANSISTOR		
Q621			2SD1819A(Q,R)	TRANSISTOR		
TH1_2			NTH20P40B473J	THERMISTOR		
DISPLAY X14-7820-10						
D104-106			B30-2545-05	LED(RED3(160))		
D110			B30-2597-05	LED(RED HI-BRIGHT)		
C102			CC73GCH1H221J	CHIP C	220PF	J
C103			CE04RW0J220M	ELECTRO	22UF	6.3WV
C110,111			CE04RW1H010M	ELECTRO	1.0UF	50WV
C127			CE04KW1H100M	ELECTRO	10UF	50WV
C131,132			CC73GCH1H221J	CHIP C	220PF	J
C150			CE04KW1A101M	ELECTRO	100UF	10WV
C185			CE04RW1H330M	ELECTRO	33UF	50WV
C186-188			CC73GCH1H220J	CHIP C	22PF	J
C189-200			CC73GCH1H101J	CHIP C	100PF	J
C217			CC73GCH1H102J	CHIP C	1000PF	J
C701,702			CC73GCH1H101J	CHIP C	100PF	J
C705			CC73GCH1H101J	CHIP C	100PF	J
C711-713			CC73GCH1H101J	CHIP C	100PF	J
C721-724			CK73GB1H103K	CHIP C	0.010UF	K
C751			CE04RW1A101M	ELECTRO	100UF	10WV
C752			CK73GB1H104K	CHIP C	0.10UF	K
CN101			E40-8903-05	FLAT CABLE CONNECTOR		
CN105	*		E41-0930-05	PIN ASSY		
CN701			E40-9820-05	SOCKET FOR PIN ASSY		
CN702			E40-9837-05	PIN ASSY		
CN703			E41-0944-05	PIN ASSY		
CN704	*		E41-0947-05	PIN ASSY		
J701	*		E63-1330-05	PIN JACK		
J711	*		E11-0946-05	PHONE JACK (MINI BLACK NI)		
WH101	*		E35-3640-05	WIRING HARNESS		
WH703	*		E35-3630-05	WIRING HARNESS		
X101			L78-0747-05	RESONATOR (4MHZ)		
R110			RK73GB1J2R2J	CHIP R	2.2	J 1/16W
R168			RK73GB1J475J	CHIP R	4.7M	J 1/16W
R171-173			RK73GB1J181J	CHIP R	180	J 1/16W
R177-182			RK73GB1J101J	CHIP R	100	J 1/16W
R183			RK73GB1J104J	CHIP R	100K	J 1/16W
R186			RK73GB1J100J	CHIP R	10	J 1/16W
R187			RK73GB1J162J	CHIP R	1.6K	J 1/16W
R188,189			RK73GB1J100J	CHIP R	10	J 1/16W
R206,207			RK73GB1J100J	CHIP R	10	J 1/16W
R208			RK73GB1J101J	CHIP R	100	J 1/16W
R211			RK73GB1J162J	CHIP R	1.6K	J 1/16W
R212			RK73GB1J242J	CHIP R	2.4K	J 1/16W
R213			RK73GB1J362J	CHIP R	3.6K	J 1/16W
R214			RK73GB1J562J	CHIP R	5.6K	J 1/16W
R215			RK73GB1J123J	CHIP R	12K	J 1/16W

L: Scandinavia K: USA P: Canada R: Mexico C: China I: Malaysia
 Y: PX(Far East,Hawaii) T: England E: Europe G: Germany V: China(Shanghai)
 Y: AAFES(Europe) X: Australia Q: Russia H: Korea M: Other Areas Δ indicates safety critical components.

* New Parts

Parts without **Parts No.** are not supplied.

Les articles non mentionnés dans le **Parts No.** ne sont pas fournis.

Teile ohne **Parts No.** werden nicht geliefert.



Ref. No	Add-ress	New Parts	Parts No.	Description	Desti-nation	Re-marks
R216			RK73GB1J363J	CHIP R	36K	J 1/16W
R218			RK73GB1J242J	CHIP R	2.4K	J 1/16W
R219			RK73GB1J362J	CHIP R	3.6K	J 1/16W
R220			RK73GB1J562J	CHIP R	5.6K	J 1/16W
R221			RK73GB1J123J	CHIP R	12K	J 1/16W
R222			RK73GB1J363J	CHIP R	36K	J 1/16W
R223-234			RK73GB1J473J	CHIP R	47K	J 1/16W
R240-251			RK73GB1J473J	CHIP R	47K	J 1/16W
R252-254			RK73GB1J102J	CHIP R	1.0K	J 1/16W
R255-257			RK73GB1J103J	CHIP R	10K	J 1/16W
R258			RK73GB1J473J	CHIP R	47K	J 1/16W
R701,702			RK73GB1J104J	CHIP R	100K	J 1/16W
R703,704			RK73GB1J101J	CHIP R	100	J 1/16W
R705			RK73GB1J750J	CHIP R	75	J 1/16W
R711-713			RK73GB1J101J	CHIP R	100	J 1/16W
R751			RK73GB1J4R7J	CHIP R	4.7	J 1/16W
R752			RK73GB1J470J	CHIP R	47	J 1/16W
R997,998			RK73GB1J221J	CHIP R	220	J 1/16W
R999			RK73GB1J4R7J	CHIP R	4.7	J 1/16W
W100			R92-0679-05	CHIP R	0 OHM	
S101,102			S70-0086-05	TACT SWITCH		
S103,104	*		S70-0112-05	TACT SWITCH		
S105			S70-0086-05	TACT SWITCH		
S107-114			S70-0086-05	TACT SWITCH		
S106			T99-0667-05	ROTARY ENCODER		
D101	*		HZU6.8(B2)	ZENER DIODE		
D101			UDZS6.8B	ZENER DIODE		
D721-728			MA111	DIODE		
ED101	*		HNA-12MM47T	FLUORESCENT INDICATOR TUBE		
IC101			MN12510F	MOS-IC		
Q103-105			DTC124EUA	DIGITAL TRANSISTOR		
Q103-105			KRC403	DIGITAL TRANSISTOR		
Q109-111			2SD1819A(Q,R)	TRANSISTOR		
A101	*		W02-4541-05	ELECTRIC CIRCUIT MODULE		
A751	*		W02-4523-05	OPTIC RECEIVING MODULE		

L: Scandinavia K: USA P: Canada R: Mexico C: China I: Malaysia
 Y: PX(Far East,Hawaii) T: England E: Europe G: Germany V: China(Shanghai)
 Y: AAFES(Europe) X: Australia Q: Russia H: Korea M: Other Areas Δ indicates safety critical components.

PARTS LIST

VRS-6100

VRS-6100

SPECIFICATIONS

AUDIO section

Rated power output during STEREO operation

65 watts per channel minimum RMS, both channels driven, at 8 Ω from 20 Hz to 20 kHz with no more than 0.7% total harmonic distortion. (FTC)

Effective power output during STEREO operation

.....100 W + 100 W
(1 kHz, 10% T.H.D. at 8 Ω)

Effective power output during SURROUND operation

FRONT80 W + 80 W
(1 kHz, 0.7% T.H.D. at 8 Ω one channel driven)

100 W + 100 W
(1 kHz, 10% T.H.D. at 8 Ω one channel driven)

CENTER80 W
(1 kHz, 0.7% T.H.D. at 8 Ω one channel driven)

100 W
(1 kHz, 10% T.H.D. at 8 Ω one channel driven)

SURROUND80 W + 80 W
(1 kHz, 0.7% T.H.D. at 8 Ω one channel driven)

100 W + 100 W
(1 kHz, 10% T.H.D. at 8 Ω one channel driven)

Total harmonic distortion0.05% (1 kHz, 50 W, 8 Ω)

Frequency response

LINE (DVD, VIDEO, AUX, FRONT AUX)
.....20 Hz ~ 90 kHz, +0 dB ~ -3.0 dB

Signal to noise ratio

LINE (DVD, VIDEO, AUX, FRONT AUX)96 dB

Input sensitivity / impedance

LINE (DVD, VIDEO, AUX, FRONT AUX)
.....500 mV / 40 kΩ

Output level / impedance

REC OUT500 mV / 2.2 kΩ

PRE OUT (SURROUND BACK)700 mV / 2.2 kΩ

PRE OUT (SUBWOOFER)1.5 V / 2.2 kΩ

Tone control

BASS±10 dB (at 100 Hz)

TREBLE±10 dB (at 10 kHz)

Loudness control

VOLUME at -30dB level+8 dB (at 100 Hz)

DIGITAL AUDIO section

Sampling frequency32 kHz, 44.1 kHz, 48 kHz, 96 kHz

Input level / impedance / wave length

Optical (VIDEO, FRONT AUX)
.....(-15 dBm ~ -21 dBm), 660 nm ±30 nm

Coaxial (DVD)0.5 Vp-p / 75 Ω

VIDEO section

Input sensitivity / impedance

Composite (DVD, VIDEO, FRONT AUX)1 Vp-p / 75 Ω

Output level / impedance

Composite (VIDEO, MONITOR OUT)1 Vp-p / 75 Ω

FM tuner section

Tuning frequency range87.5 MHz ~ 108 MHz

Usable sensitivity (MONO)

.....1.3 μV (75 Ω) / 13.2 dBf (75 kHz dev, SINAD 30 dB)

50 dB quieting sensitivity

STEREO28 μV (75 Ω) / 40.2 dBf (75 kHz dev)

Total harmonic distortion (1 kHz)

MONO0.5% (71.2 dBf input)

STEREO0.7% (71.2 dBf input)

Signal to noise ratio (1 kHz)

MONO75 dB (71.2 dBf input)

STEREO68 dB (71.2 dBf input)

Selectivity (±400 kHz)70 dB

Stereo separation (1 kHz)40 dB

Frequency response (30 Hz ~ 15kHz)+0.5 dB, -3.0 dB

AM tuner section

Tuning frequency range530 kHz ~ 1,700 kHz

Usable sensitivity (30% mod, S/N 20 dB) 16 μV / (600 μV/m)

Signal to noise ratio (30% mod, 1mV input)50 dB

GENERAL

Power consumption120 W

DimensionsW : 440 mm (17-5/16")

H : 079 mm (3-1/8")

D : 357 mm (14-1/16")

Weight (Net)7.9 kg (17.4 lb)

Notes

1. KENWOOD follows a policy of continuous advancements in development. For this reason specifications may be changed without notice.
2. The full performance may not be exhibited in an extremely cold location (under a water-freezing temperature).