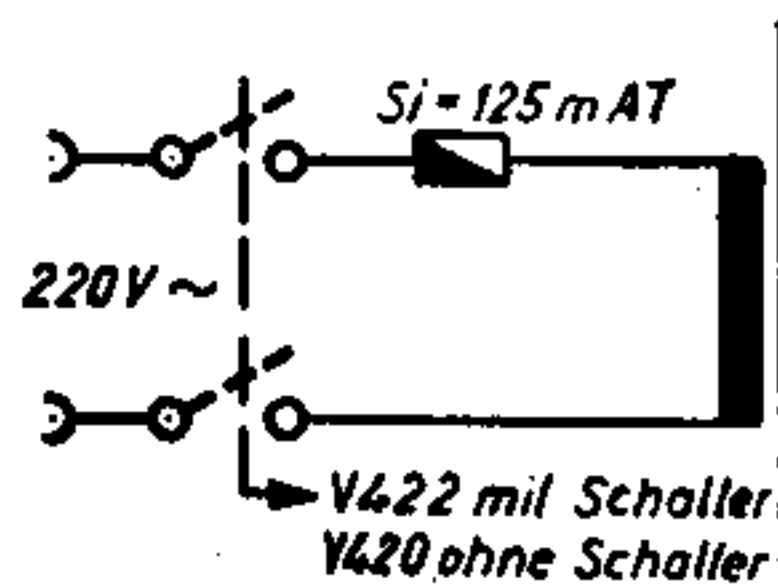
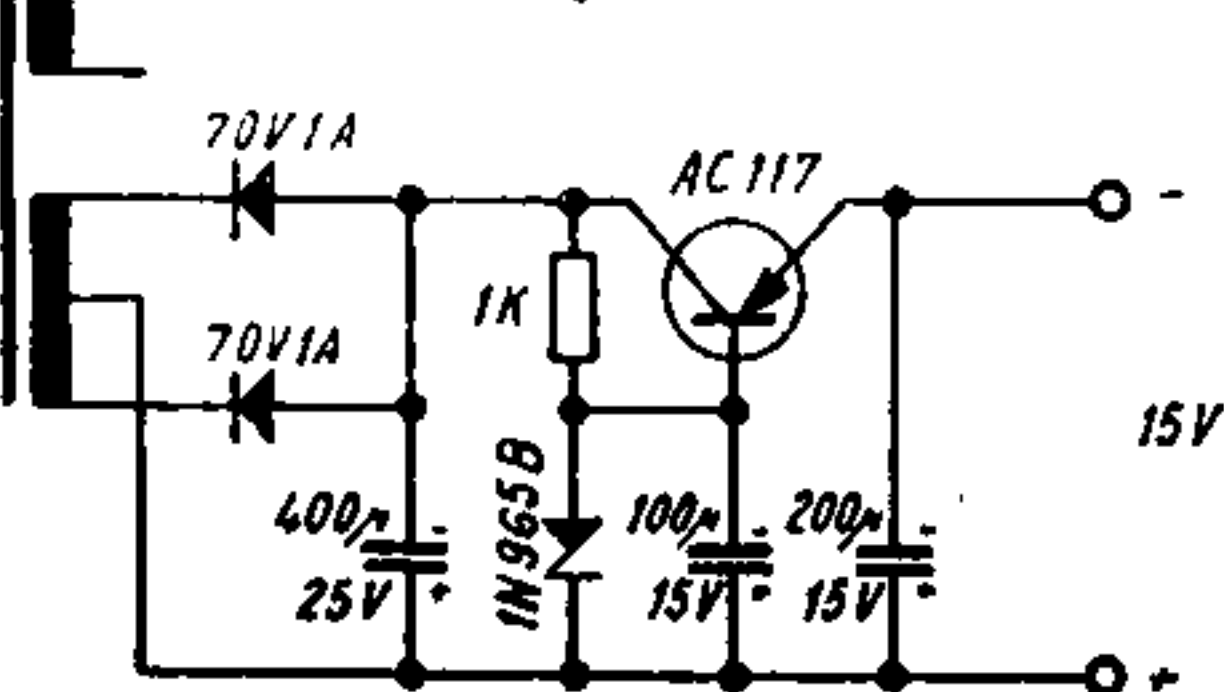


Trafo: Zeich Nr. 40452



Lenco V420
V422

Kanal 2 analog Kanal 1 (Getrennte Verstärker)



Für T ₁	Für T ₃
1. w.	1. bu
2. v	2. gn. v
3. bu	

Für T ₂	
1. og mit R = 8,2K	
2. gb " R = 10K	
3. gn " R = 12K	
(4. bu " R = 15K)	