

- 5.6V
- TUNER L
- TUNER R
- +12V(A)
- GND
- CE
- DO
- CLK
- DI
- ST

- AUX R
- AUX L
- REC L
- REC R
- TAPE R
- TAPE L
- LEAF
- OK-MODE
- HALL-B
- HALL-A
- MTR-CON
- SOL-B
- SOL-A

AM-H

- ECHO B
- ECHO A
- EX-CLK2
- EX-DO
- CD-LATCH
- 12V-MTR

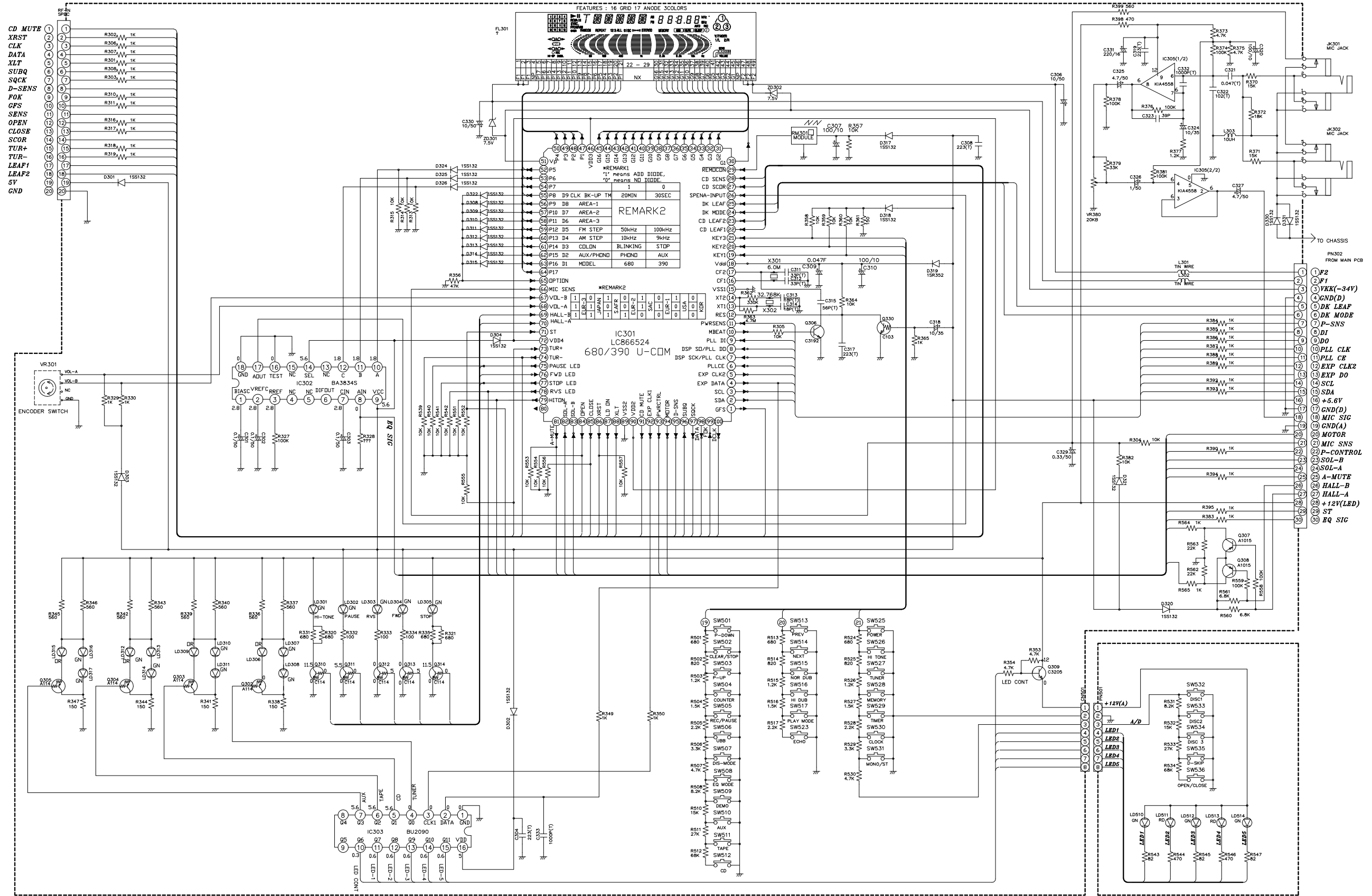
- CD L
- A-GND
- CD R
- +12V (A)
- D-GND
- +5.0V
- +5.6V
- GND (M)
- +12V (M)
- GND

- EQ-SIC
- +12V(LED)
- HALL-A
- HALL-B
- AMUTE
- SOL-A
- SOL-B
- P-CTRL
- MIC-SEN
- MTR-CON
- MIC-SIG
- GND(D)
- GND(T)
- +5.6V
- +5.6V
- P-SNS
- EXP-CLK2
- EXP-CLK1
- PLL-CE
- PLL-CLK
- PLL-CLK
- DI
- DI
- P-SNS
- DA-MODE
- LEAF
- GND(D)
- GND(T)
- VKKF-447
- P1
- P2

JK601
SPK JACK

JK602
HEADPHONE

SINGLE VOLTAGE



- 1 CD MUTE
- 2 XRST
- 3 CLK
- 4 DATA
- 5 XLT
- 6 SUBQ
- 7 SQCK
- 8 D-SENS
- 9 FOK
- 10 CFS
- 11 SENS
- 12 OPEN
- 13 CLOSE
- 14 SCOR
- 15 TUR+
- 16 LEAF1
- 17 LEAF2
- 18 5V
- 19 GND

- 1 F2
- 2 F1
- 3 GND(D)
- 4 DK LEAF
- 5 DK MODE
- 6 P-SNS
- 7 DI
- 8 PLL CLK
- 9 PLL CE
- 10 EXP CLK2
- 11 SCL
- 12 SDA
- 13 +5.6V
- 14 GND(D)
- 15 MIC SIG
- 16 NND(A)
- 17 MOTOR
- 18 MIC SNS
- 19 P-CONTROL
- 20 SOL-B
- 21 SOL-A
- 22 A-MUTE
- 23 HALL-B
- 24 HALL-A
- 25 +12V(LED)
- 26 ST
- 27 EQ SIG

REMARK1
'1' means ADD DIODE.
'0' means NO DIODE.

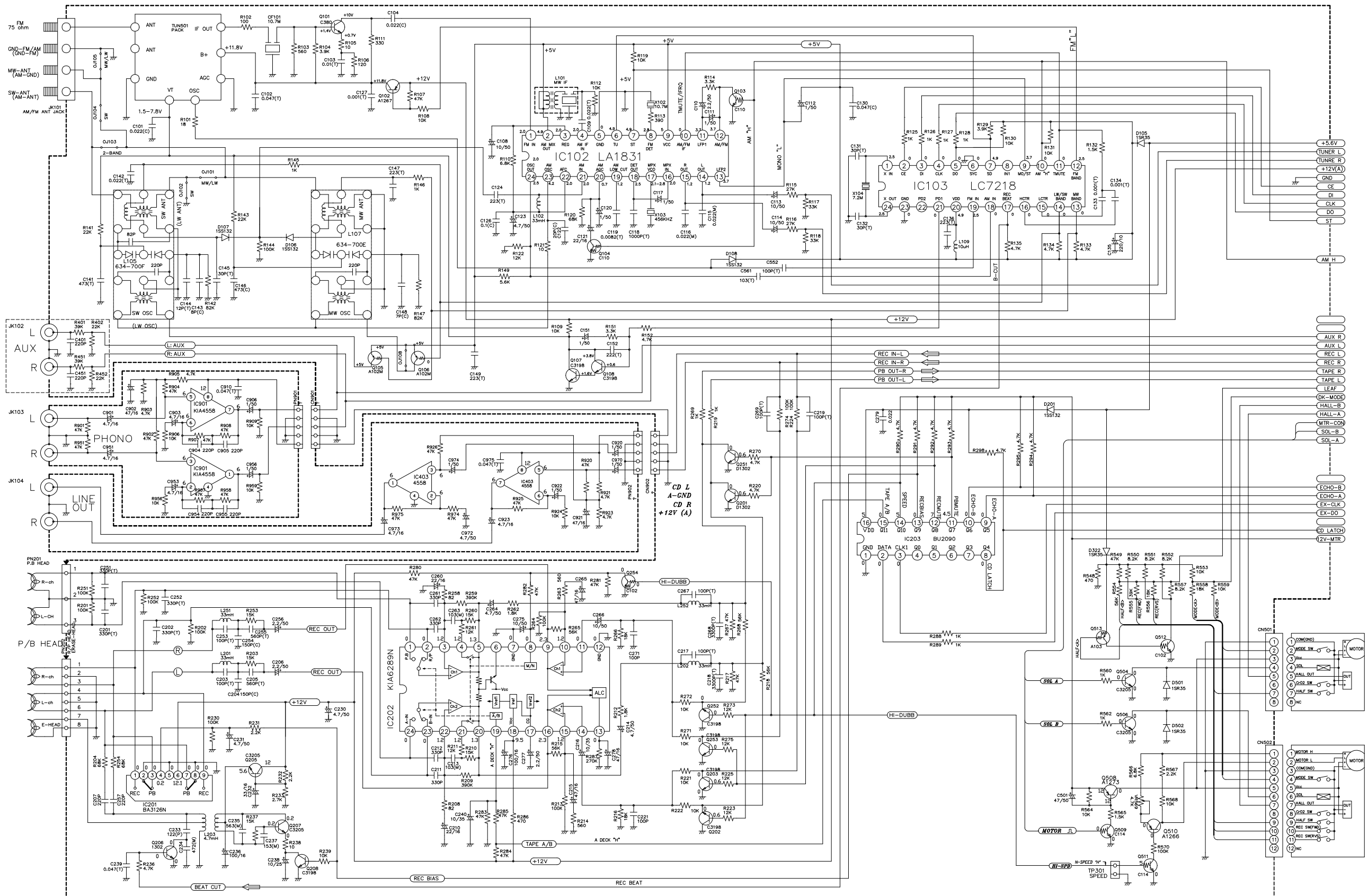
51	P3	0
52	P4	0
53	P5	0
54	P7	0
55	P8	20MIN 30SEC
56	P9	AREA-1
57	P10	AREA-2
58	P11	AREA-3
59	P12	D5 50kHz 100kHz
60	P14	D4 10kHz 9kHz
61	P14	D3 CDLDN BLINKING STDP
62	P15	D2 AUX/PHOND PHOND AUX
63	P16	D1 MDEL 680 390

REMARK2

64	P17	0
65	OPTIION	0
66	MIC SENS	0
67	VLD-B	0
68	VLD-A	0
69	HALL-B	0
70	HALL-A	0
71	ST	0
72	VDD4	0
73	TUR+	0
74	TUR-	0
75	PAUSE LED	0
76	FWD LED	0
77	STDP LED	0
78	RVS LED	0
79	HITON	0

REMARK3

80	A-MUTE	0
81	CD MUTE	0
82	EXP CLK1	0
83	P-CTRL	



- +5.6V
- TUNER L
- TUNER R
- +12(A)
- GND
- CE
- DI
- CLK
- DO
- ST

- AUX R
- AUX L
- REC L
- REC R
- TAPE R
- TAPE L
- LEAF
- OK-MODE
- HALL-B
- HALL-A
- MTR-CON
- SOL-B
- SOL-A

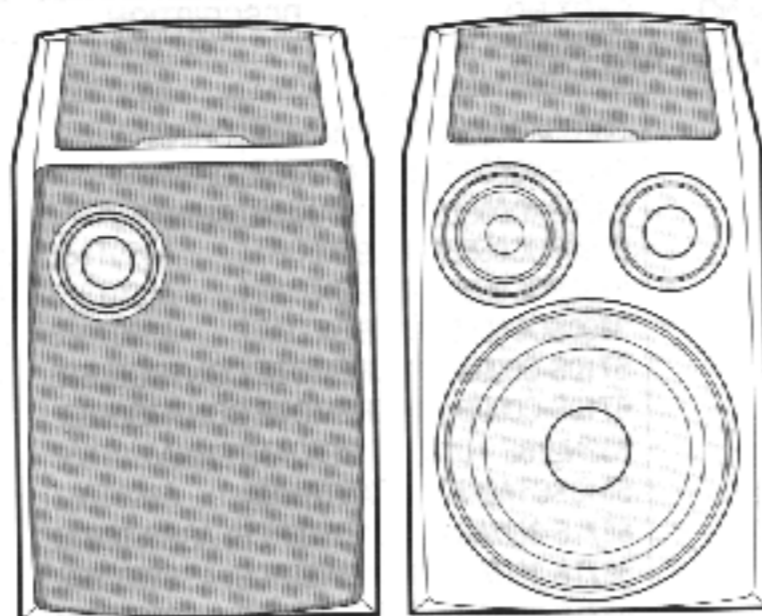
- ECHO-B
- ECHO-A
- EX-CLK
- EX-DO
- CD LATCH
- 2V-MTR

- 1 COM(CHD)
- 2 MODE SW
- 3 Vcc
- 4 SOL
- 5 HALL OUT
- 6 CD2 SW
- 7 HALF SW
- 8 NC

- 1 MOTOR H
- 2 MOTOR L
- 3 COM(CHD)
- 4 MODE SW
- 5 Vcc
- 6 SOL
- 7 HALL OUT
- 8 CD2 SW
- 9 HALF SW
- 10 REC SW(MO)
- 11 REC SW(RV)
- 12 NC

SPEAKER SYSTEM

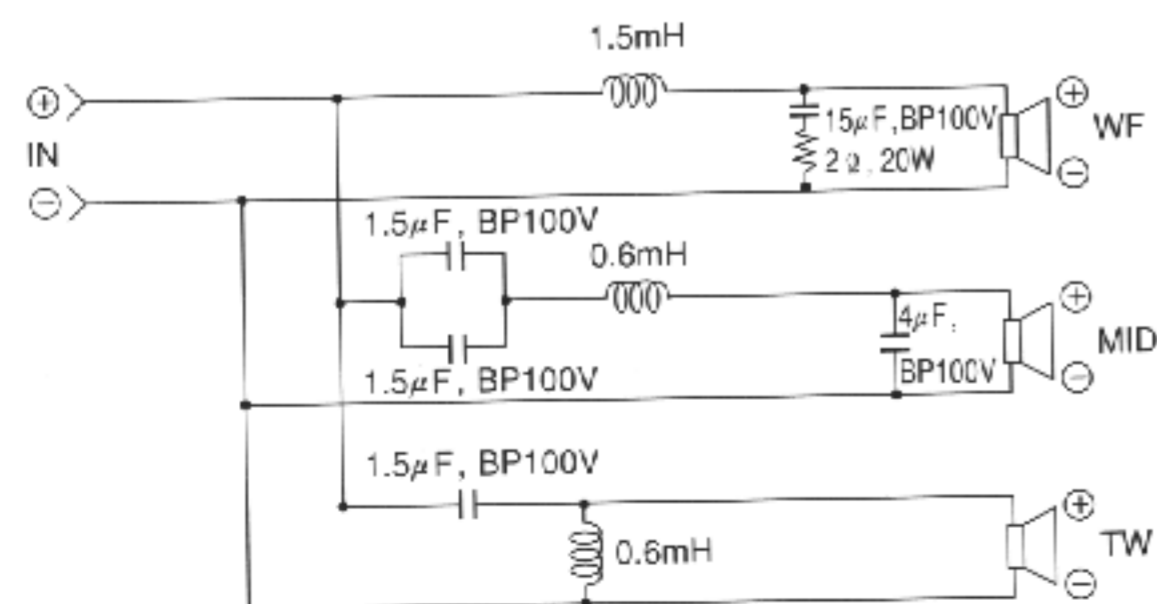
MODEL: FE-680E



SPECIFICATION

● TYPE	: BASS REFLE × 3 WAY 3 SPEAKER SYSTEM
● SPEAKER UNITS	: WOOFER 200mm(8"), MIDRANGE 85mm(3 1/4"), TWEETER 60mm(2 1/4")
● IMPEDANCE	: 6 Ω
● FREQUENCY RANGE	: 60Hz~20,000Hz
● S.P.L.	: 86dB/W(1m)
● RATED INPUT POWER	: 70W
● MAX. INPUT POWER	: 140W
● DIMENSION	NET : 260(W) × 445(H) × 320(D)mm
	SHIPPED : 794(W) × 549(H) × 361(D)mm
● WEIGHT	NET : 6.5kg
	SHIPPED : 15.2kg

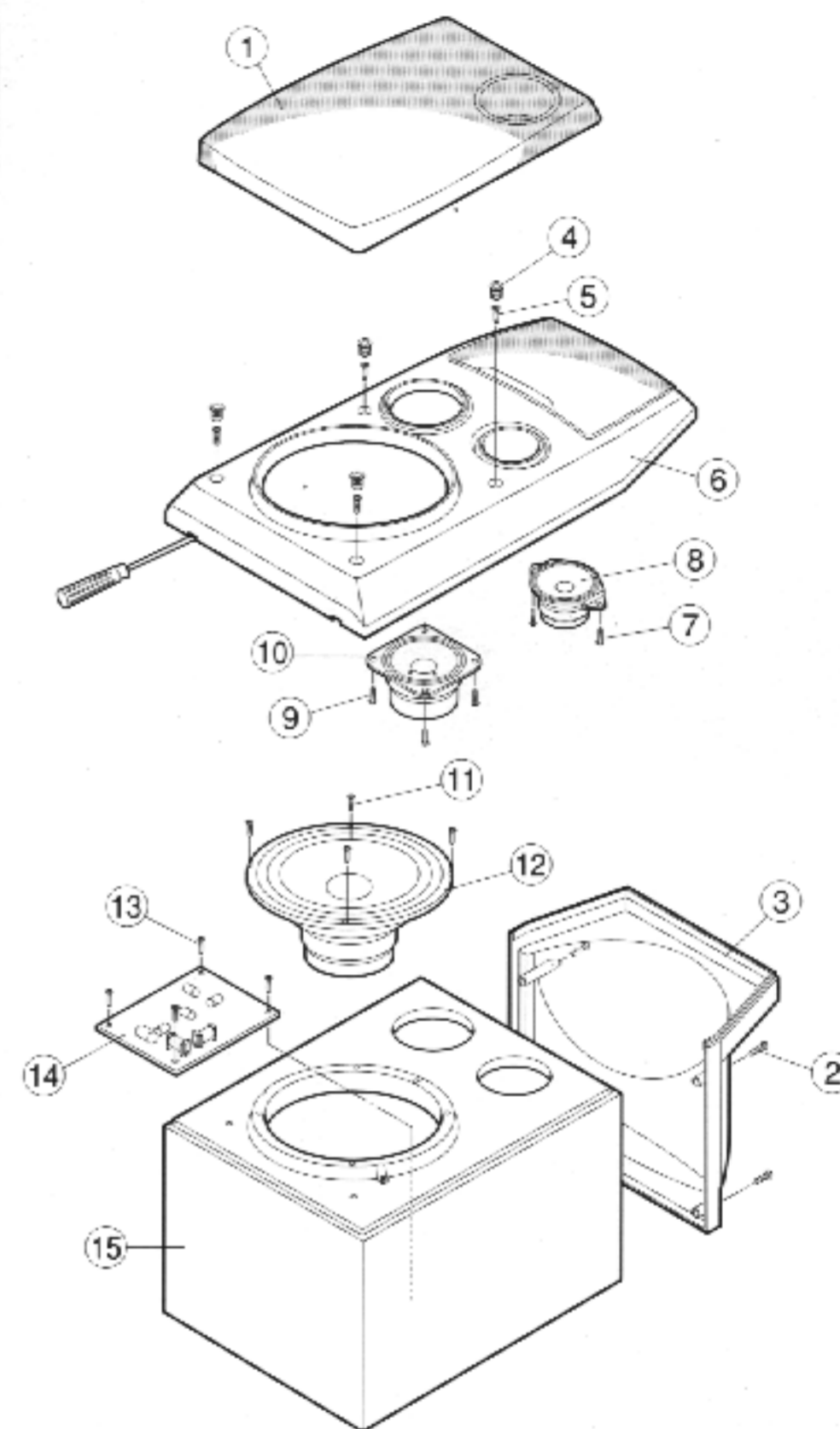
SCHEMATIC DIAGRAM



EXPLODED VIEW/PARTS LIST

NO	DESCRIPTION	PART NO.	Q'TY
1	JERSEY NET ASS'Y	LEFT 3701SM0007A	1
		RIGHT 3701SM0007B	1
2	SCREW(3.5 × 18)	353M052N	4
3	TOP CASE	3110SMM002B	1
4	HOLDER NET	4930SM0004A	4
5	SCREW(3.5 × 18)	353M052N	4
6	FRONT PANEL ASS'Y	LEFT 3721SMM005C	1
		RIGHT 3721SMM005D	1
7	SCREW(3.1 × 12)	353M025K	2
8	TWEETER	6400SCEB02B	1
9	SCREW(3.1 × 12)	353M025K	3
10	MIDRANGE	6400SCEC02B	1
11	SCREW(3.5 × 18)	353M052N	4
12	WOOFER	6400SCEK01B	1
13	SCREW(3.1 × 12)	353M052C	4
14	NETWORK ASS'Y	6871SS356AC	1
15	CABINET ASS'Y	LEFT 3091SMW011C	1
		RIGHT 3091SMW011D	1

※ WHEN IT IS TO BE DISASSEMBLED, PUT THE DRIVER(-) INTO SMALL GROOVE BETWEEN FRONT PANEL ASS'Y(6) AND CABINET ASS'Y(15), THEN PUSH THE DRIVER(-) FORWARD.



(RIGHT)