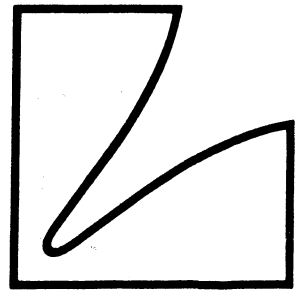
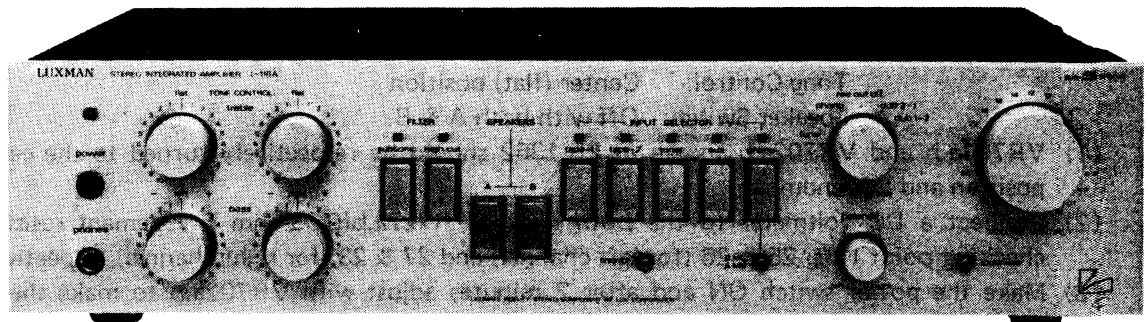


SERVICE MANUAL



LUXMAN SOLID STATE STEREO INTEGRATED AMPLIFIER *L-116A*



CONTENTS

| | |
|---------------------------------------|----|
| ALIGNMENT PROCEDURES..... | 1 |
| FRONT VIEW PARTS LIST..... | 2 |
| REAR VIEW PARTS LIST..... | 3 |
| MECHANISM PARTS LIST..... | 4 |
| PB-1362 PARTS LIST..... | 5 |
| PB-1362. PB-1365 PARTS LIST..... | 6 |
| PB-1363. PB-1364 PARTS LIST..... | 7 |
| PB-1366.PB-1367.PB-1368 PARTS LIST... | 8 |
| PB-1369 PARTS LIST | 9 |
| SCHEMATIC DIAGRAMME..... | 10 |
| BLOCK DIAGRAMME..... | 11 |
| STANDARD CURVES..... | 11 |

L-116A ALIGNMENT PROCEDURES

L-116A Alignment Procedures

1) Idling Current Adjustment

Setting condition — Volume Control: minimum
 Tone Control: Center (flat) position
 Speaker Switch: Off with both A & B.

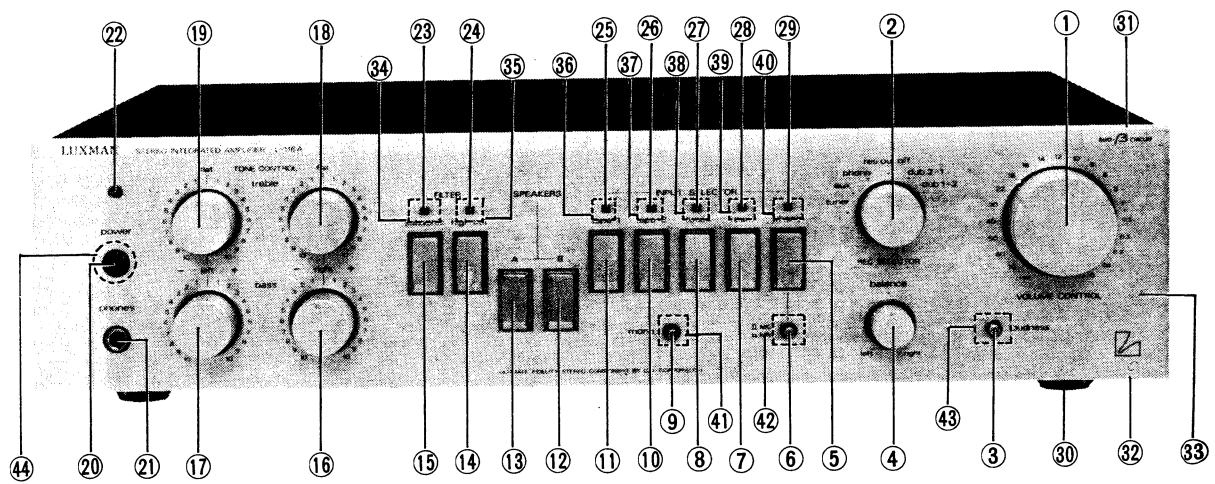
- (1) VR701a.b and VR702a.b shown in PB-1362 should be respectively turned to the center position and left-endmost.
- (2) Connect a DC voltmeter to the both ends of R727a.b(0.33-ohm 5W cement resistor), checking point Nos. 25 & 26 (for left channel) and 27 & 28 (for right channel) respectively.
- (3) Make the power switch ON and after 2 minutes adjust with VR702a.b to make the DC voltmeter connected in above-mentioned procedure (2) read 33mV.

2) Center Voltage Adjustment

- (1) Connect a DC voltmeter to the right and left channels of the speaker terminal "A" respectively.
- (2) Push the speaker switch "A" and adjust with VR701a.b to make the DC voltmeter connected in above-mentioned procedure (1) read 0V.

* The affix a.b of VR701a.b & VR702a.b stands for right and left channels.

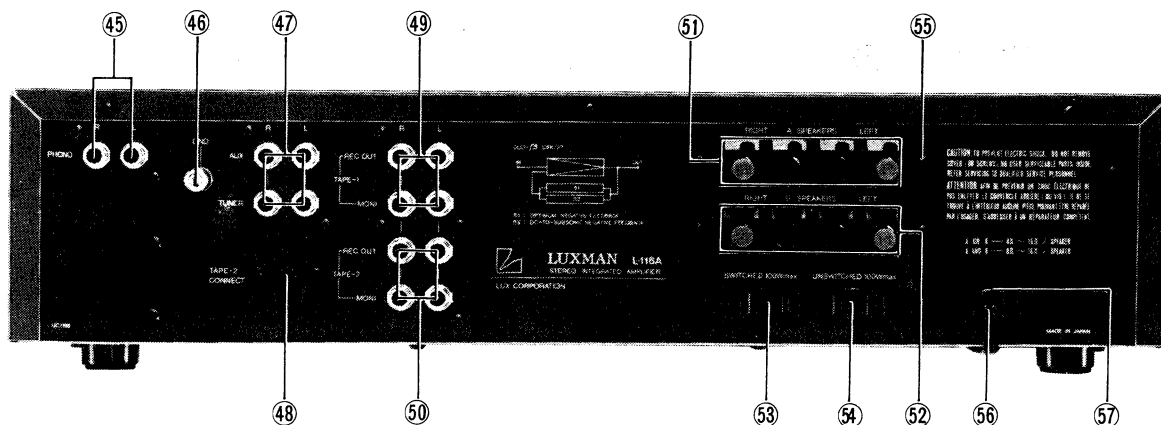
FRONT VIEW



PARTS LIST(COSMETIC)

| SYMBOL NO. | STOCK NO. | DESCRIPTION | REMARK | SYMBOL NO. | STOCK NO. | DESCRIPTION | REMARK |
|---------------------|-----------|----------------------|--------|-------------------|-----------|----------------------|--------|
| (Knob) | | | | | | | |
| 1 | WH1105 | Volume Control | | 11 | WJ1142P | Tape-1 | |
| 2 | WH1117 | Rec Selector | | 12 | WJ1142P | Speaker-B | |
| 3 | WJ1145 | Loudness | | 13 | WJ1142P | Speaker-A | |
| 4 | WJ1118 | Balance Control | | 14 | WJ1142P | High Cut | |
| 5 | WJ1142P | Phono | | 15 | WJ1142P | Subsonic | |
| 6 | WJ1145 | Phono MC.MM Selector | | 16 | WH1117 | Bass Control Right | |
| 7 | WJ1142P | Aux | | 17 | WH1117 | Bass Control Left | |
| 8 | WJ1142P | Tuner | | 18 | WH1117 | Treble Control Right | |
| 9 | WJ1145 | Mode | | 19 | WH1117 | Treble Control Left | |
| 10 | WJ1142P | Tape-2 | | 20 | WJ1133 | Power | |
| (LED) | | | | (Head Phone Jack) | | | |
| 22 | TD0196 | SLR-30UR, Pilot | | 21 | AJ0014 | LJ-264-1-7 | |
| 23 | TD0223 | SEL1910A, Subsonic | | (Case Ass'y) | | | |
| 24 | TD0223 | SEL1910A, High Cut | | 30 | WN0007 | Foot | |
| 25 | TD0222 | SEL1710K, Tape-1 | | 31 | UG1032 | Bonnet 1032 | |
| 26 | TD0222 | SEL1710K, Tape-2 | | 32 | UE1107 | Bottom Plate 1107 | |
| 27 | TD0222 | SEL1710K, Tuner | | | | | |
| 28 | TD0222 | SEL1710K, Aux | | | | | |
| 29 | TD0222 | SEL1710K, Phono | | | | | |
| (Front Panel A'ssy) | | | | | | | |
| 33 | WA1226 | Front Panel 1226 | | | | | |
| 34-40 | WE1097 | Protector 1097 | | | | | |
| 41 | WE10951 | Protector 1095 1/2 | | | | | |
| 42 | WE10951 | Protector 1095 1/2 | | | | | |
| 43 | WE10951 | Protector 1095 1/2 | | | | | |
| 44 | WE1089 | Protector 1089 | | | | | |

REAR VIEW



PARTS LIST

| SYMBOL NO. | STOCK NO. | DESCRIPTION | REMARK | SYMBOL NO. | STOCK NO. | DESCRIPTION | REMARK | |
|------------|-----------|---------------------|----------|--------------------------|-----------|-------------------|----------|-------|
| (Terminal) | | | | (Extra AC Outlet) E Only | | | | |
| 45 | AT0120 | Input 2P, Phono | | *53 | AC0010 | MD-40 Switched | E | |
| 46 | AG0048 | Ground | | *54 | AC0010 | MD-40 Un Switched | E | |
| 47 | AT0122 | Input 4P, Aux Tuner | | (Rear Panel) | | | | |
| 48 | AS0205 | DIN | | *55 | UC1198 | Rear Panel 1198 | E | |
| 49 | AT0109 | Input 4P, Tape-1 | | | UC1197 | Rear Panel 1197 | S | |
| 50 | AT0109 | Input 4P, Tape-2 | | (Power Cord) | | | | |
| 51 | AT0080 | Speaker A | | *56 | BK0018 | A-18BF | EZ | |
| 52 | AT0080 | Speaker B | | | BK0022 | C2-461-B | EK SK | |
| (Bushing) | | | | | | BK0023 | SAA Mini | EG SG |
| *57 | BU0033 | SR-4N-4 | EK EZ SK | | | | | |
| | BU0039 | SR-5N-4 | EG SG | | | | | |

*Note: In this manual the parts, which differs depending on destination and mains voltage, are classified indicated as follows:

- EZ: 120V For North America, South East Asia, Middle East Asia, Middle South America
- E EK: 220V For Europe, South Asia, East Asia, Middle East Asia, Middle South America
- EG: 240V For England, Australia, New Zealand
- SK: 220V For Europe, South East Asia, South America
- S SG: 240V For England, Oceania

* E Type All With Line Voltage Selector

MECHANISM

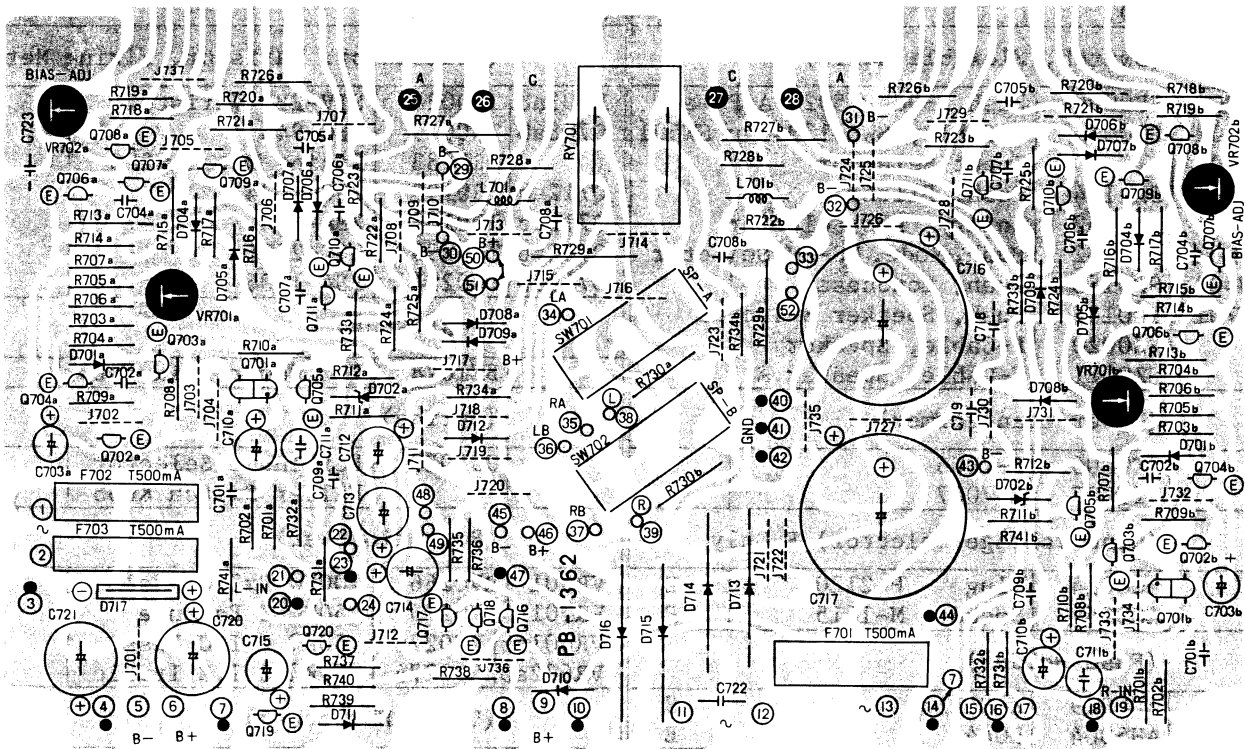
| SYMBOL NO. | STOCK NO. | DESCRIPTION | REMARK | SYMBOL NO. | STOCK NO. | DESCRIPTION | REMARK |
|--------------------------------|-----------|-----------------------------|--------|--------------------------------------|-----------|--|--------|
| (Switch, Flexible Cable) | | | | (Transistor, Varistor, Fixing Metal) | | | |
| SW001 | SP0090 | Push, SDG5P-502 5A Power | | D703ab | TV0026 | STV-2H, Varistor | |
| SW101 | SZ0016 | F-Cable, SWR-1204 For SW501 | | Q708ab | TR0029 | 2SC-945 | |
| SW201 | | Input Selector | | | UR1283 | Fixing Metal 1283 | |
| SW207 | SP0184 | Push, Filter | | Q712ab | TR0190 | 2SC-1624 | |
| SW301 | SR0152 | Rotary, Rec Selector | | Q713ab | TR0188 | 2SA-814 | |
| SW501 | SP0182 | Push, Mode, MC-MM Selector | | Q714ab | TR0295 | 2SC-2581 | |
| SW502 | SP0183 | Push, Loudness | | Q715ab | TR0294 | 2SA-1106 | |
| SW701 | SP0185 | Push, Speaker Selector | | (Heat Sink) | | | |
| | SZ0020 | F-Cable, Speaker B | | | BE1078 | For Power Transistor | |
| | SZ0021 | F-Cable, Speaker A | | (Spring) | | | |
| (Power Transformer) | | | | | UU1038 | For Input Selector Filter Switch Knob | |
| * | PT7006 | P-7006 | S | (Potentiometer) | | | |
| | PT7007 | P-7007 | E | VR001 | RV0266 | 100K Ω Bx2 CT Volume | |
| (Line Voltage Selector) E Only | | | | VR501 | RV0275 | 250K Ω Z Balance | |
| * | AC0014 | Plug P-2120 | E | VR601ab | RV0276 | 50K Ω C T.C Bass | |
| * | AC0054 | Socket M-1615 | E | VR602ab | RV0276 | 50K Ω C T.C Treble | |
| (Fuse Holder) | | | | (LED, LED Socket) | | | |
| *F001 | AH0019 | X-N1153 | S | | TD0196 | SLR-30UR Pilot | |
| | AH5004 | H0445 | E | | AS0206 | Socket, L: 250mm | |
| (Fuse) | | | | D401 | TD0222 | Yellow, Phono | |
| *F001 | BF0210 | 5 x 20 2A(T) | EK.S | D402 | TD0222 | Yellow, Aux | |
| | BF0213 | 5 x 20 4A(T) | EZ | D403 | TD0222 | Yellow, Tuner | |
| F701 | BF0206 | 5 x 20 500mA(T) | | D404 | TD0222 | Yellow, Tape-2 | |
| F702 | BF0206 | 5 x 20 500mA(T) | | D405 | TD0222 | Yellow, Tape-1 | |
| F703 | BF0206 | 5 x 20 500mA(T) | | D406 | TD0223 | Orange, High Cut | |
| | | | | D407 | TD0223 | Orange, Subsonic | |
| (Packing Material) | | | | | | | |
| | XB1046 | Pad A 1046 | | | | | |
| | XA1287 | Carton 1287 | | | | | |
| | ME0190 | Owner's Manial | | | | | |

Notes:

Flexible Cable Switch Ass'y can be disintegrated into 3 components-Switch Body, Flexible Cable, Switch Mechanism. In this list, the respective disintegrated Components are classified into the categories.

Switch Body - PCB Unit Parts List
 Flexible Cable - Mechanism Parts List
 Switch Mechanism - Mechanism Parts List

PB-1362 POWER AMP, PROTECTOR



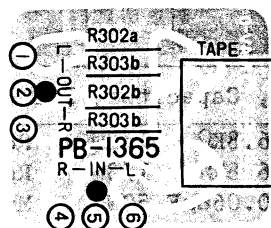
PB-1362 PARTS LIST

| SYMBOL NO. | STOCK NO. | DESCRIPTION | REMARK | SYMBOL NO. | STOCK NO. | DESCRIPTION | REMARK |
|--------------------|-----------|-------------|--------|------------|-----------|-------------|--------|
| (Resistor) Unit: Ω | | | | | | | |
| R111ab | RD0461 | 2.7K 1/3W | Rd | R721ab | RS2508L | 47 1/2W | Ro |
| R701ab | RD0430 | 1M 1/3W | Rd | R723ab | RS2565L | 360 1/2W | Ro |
| R702ab | RD0466 | 1K 1/3W | Rd | R723ab | RS2565L | 360 1/2W | Ro |
| R703ab | RS2522L | 680 1/2W | Ro | R724ab | RD0456 | 6.8K 1/3W | Rd |
| R704ab | RS2522L | 680 1/2W | Ro | R725ab | RD0456 | 6.8K 1/3W | Rd |
| R705ab | RS2513L | 120 1/2W | Ro | R726ab | RS2514L | 150 1/2W | Rd |
| R706ab | RS2513L | 120 1/2W | Ro | R727ab | RG0601 | 0.33 5W | Rc |
| R707ab | RD0441 | 120K 1/3W | Rd | R728ab | RD2530 | 6.8 1/2W | Rd |
| R708ab | RD0446 | 47K 1/3W | Rd | R729ab | RS5044LA | 10 2W | Ro |
| R709ab | RD0476 | 150 1/3W | Rd | R730ab | RS2715LA | 330 1W | Ro |
| R710ab | RD2594 | 3.3K 1/2W | Rd | R731ab | RD0453 | 12K 1/3W | Rd |
| R712ab | RD2618 | 33K 1/2W | Rd | R733ab | RD0489 | 10 1/3W | Rd |
| R713ab | RS2520L | 470 1/2W | Ro | R734ab | RD0455 | 8.2K 1/3W | Rd |
| R714a | RD2620 | 39K 1/2W | Rd | R735 | RD0466 | 1K 1/3W | Rd |
| R715ab | RS2501L | 10 1/2W | Ro | R736 | RD0460 | 3.3K 1/3W | Rd |
| R716ab | RS2514L | 150 1/2W | Ro | R737 | RD0464 | 1.5K 1/3W | Rd |
| R717a | RD2618 | 33K 1/2W | Rd | R738 | RDO469 | 560 1/3W | Rd |
| R718ab | RD0467 | 820 1/3W | Rd | R739 | RD0460 | 3.3K 1/3W | Rd |
| R719ab | RD0469 | 560 1/3W | Rd | R740 | RD0441 | 120K 1/3W | Rd |
| R720ab | RS2508L | 47 1/2W | Ro | R741ab | RD0480 | 68 1/3W | Rd |

PB-1362-1365 PARTS LIST

| SYMBOL NO. | STOCK NO. | DESCRIPTION | REMARK | SYMBOL NO. | STOCK NO. | DESCRIPTION | REMARK |
|--------------------------|-----------|------------------|--------|--------------|-----------|------------------|--------|
| (Capacitor) | | | | (Diode) | | | |
| C115 | CE1702 | 100μF 6.3WV | E1 | D701ab | TD0053 | 1S-2473 | |
| C174 | CE1721 | 100μF 16WV | E1 | D702ab | TD0027 | WZ-120 ZENER 12V | |
| C701ab | CC0006 | 47PF 50WV | Ce | D703ab | TV0026 | STV-3H VARISTOR | |
| C702ab | CC0010 | 330PF 50WV | Ce | D704ab | TD0053 | 1S-2473 | |
| C703ab | CE1717 | 10μF 16WV | E1 | D705ab | TD0053 | 1S-2473 | |
| C704ab | CM0114 | 22PF 500WV | Mi | D706ab | TD0053 | 1S-2473 | |
| C705ab | CQ1319 | 0.033μF 50WV | My | D707ab | TD0053 | 1S-2473 | |
| C706ab | CK0155 | 0.01μF 50WV | Ce | D708ab | TD0053 | 1S-2473 | |
| C707ab | CK0155 | 0.01μF 50WV | Ce | D709ab | TD0053 | 1S-2473 | |
| C708ab | CQ1315 | 0.015μF 50WV | My | D710ab | TD0002 | 1N-4002 | |
| C709ab | CC0038 | 5PF 50WV | Ce | D711 | TD0053 | 1S-2473 | |
| C710ab | CE1701 | 47μF 6.3WV | E1 | D712ab | TD0002 | 1N-4002 | |
| C711ab | CQ1441 | 6800PF 50WV | St | D713 | TD0160F | S3V-40 (F4) | |
| C712 | CE1704 | 330μF 6.3WV | E1 | D714 | TD0160F | S3V-40 (F4) | |
| C713 | CE1704 | 330μF 6.3WV | E1 | D715 | TD0160F | S3V-40 (F4) | |
| C716 | CE1016 | 10000μF 56WV | E1 | D716 | TD0160F | S3V-40 (F4) | |
| C717 | CE1016 | 10000μF 56WV | E1 | D717 | TD0142 | S1VB-20 | |
| C718 | CQ2006 | 0.47μF 125WV | Fi | D718 | TD0002 | 1N-4002 | |
| C719 | CQ2006 | 0.47μF 125WV | Fi | (Transistor) | | | |
| C720 | CE1761 | 470μF 50WV | E1 | Q701ab | TF0014 | 2SK-129A | |
| C721 | CE1761 | 470μF 50WV | E1 | Q702ab | TR0029 | 2SC-945 | |
| (Switch) | | | | Q703ab | TR0029 | 2SC-945 | |
| SW701ab | SS0138 | Slide, SSR22351D | | Q704ab | TR0043 | 2SA-733 | |
| SW702ab | SS0138 | Slide, SSR22351D | | Q705ab | TR0323 | 2SC-1845 | |
| (Trimming Potentiometer) | | | | Q706ab | TR0320 | 2SA-992 | |
| VR701ab | RT0090 | 100Ω (B) SR1PR | | Q707ab | TR0237 | 2SA-949 | |
| VR702ab | RT0007 | 470Ω (B) SR1PR | | Q708ab | TR0029 | 2SC-945 | |
| (Fuse, Fuse Holder) | | | | Q709ab | TR0236 | 2SC-2229 | |
| F701 | BF0206 | 5 x 20 0.5A(T) | | Q710ab | TR0198 | 2SC-1815 | |
| F702 | BF0206 | 5 x 20 0.5A(T) | | Q711ab | TR0087 | 2SA-1015 | |
| F703 | BF0206 | 5 x 20 0.5A(T) | | Q712ab | TR0190 | 2SC-1624 | |
| F701 | AH0028 | 23165102-C | | Q713ab | TR0188 | 2SA-814 | |
| F702 | AH0028 | 23165102-C | | Q714ab | TR0295 | 2SC-2581 | |
| F703 | AH0028 | 23165102-C | | Q715ab | TR0294 | 2SA-1106 | |
| (Relay) | | | | Q716 | TR0029 | 2SC-945 | |
| RY701 | AY0046 | GZ-12H | | Q717 | TR0029 | 2SC-945 | |
| (Choke Coil) | | | | Q718 | TR0320 | 2SA-992 | |
| L701ab | LA1004 | LUX-1004-2M/mH | | Q719 | TR0029 | 2SC-945 | |
| | | | | Q720ab | TR0259 | 2SC-2120 | |
| | | | | (PCB Board) | | | |
| | | | | | PC1362 | PB-1362 | |

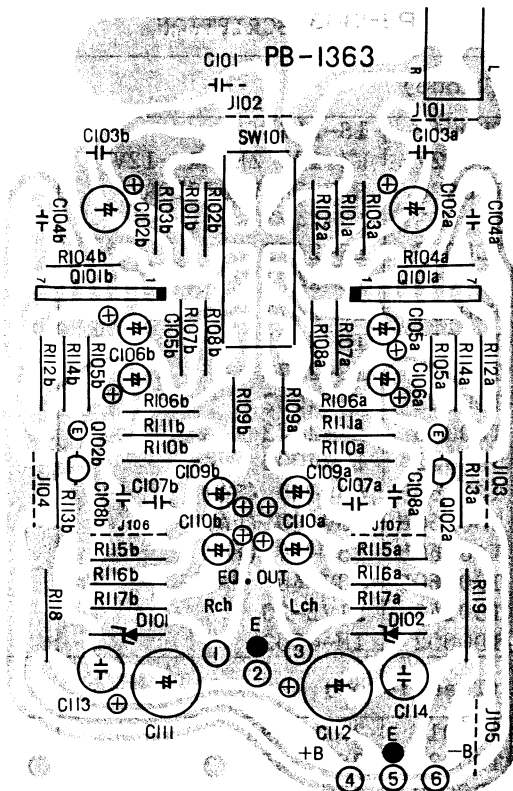
PB-1365(HEAD PHONE)



| (Resistor) | | | | | | | |
|-----------------|--------|------------------|------|----|--|--|--|
| R302ab | RD0440 | 150K | 1/3W | Rd | | | |
| R303ab | RD0440 | 150K | 1/3W | Rd | | | |
| (DIN Connector) | | | | | | | |
| | AS0205 | 5P | | | | | |
| (PCB Board) | | | | | | | |
| | PD1363 | PB-1363, 4, 5, 6 | | | | | |

PB-1363-1364 PARTS LIST

PB-1363-EQUOLIZER



| SYMBOL NO. | STOCK NO. | DESCRIPTION | | | REMARK |
|---------------------------|-----------|-------------|------|----|--------|
| (Resistor) Unit: Ω | | | | | |
| R101ab | RD0474 | 220 | 1/3W | Rd | |
| R102ab | RD0434 | 470K | 1/3W | Rd | |
| R103ab | RD0446 | 47K | 1/3W | Rd | |
| R104ab | RD0472 | 330 | 1/3W | Rd | |
| R105ab | RD0474 | 220 | 1/3W | Rd | |
| R106ab | RD0483 | 39 | 1/3W | Rd | |
| R107ab | RD0434 | 470K | 1/3W | Rd | |
| R108ab | RD0434 | 470K | 1/3W | Rd | |
| R109ab | RD0470 | 470 | 1/3W | Rd | |
| R110ab | RD0451 | 18K | 1/3W | Rd | |
| R111ab | RD2137 | 200K | 1/3W | Rd | |
| R112ab | RD0470 | 470 | 1/3W | Rd | |
| R113ab | RD0454 | 10K | 1/3W | Rd | |
| R114ab | RD0456 | 6.8K | 1/3W | Rd | |
| R115ab | RD0443 | 82K | 1/3W | Rd | |
| R116ab | RD0469 | 560 | 1/3W | Rd | |
| R117ab | RD0438 | 220K | 1/3W | Rd | |
| R118 | RS2746LA | 560 | 1W | Ro | |
| R119 | RS2746LA | 560 | 1W | Ro | |

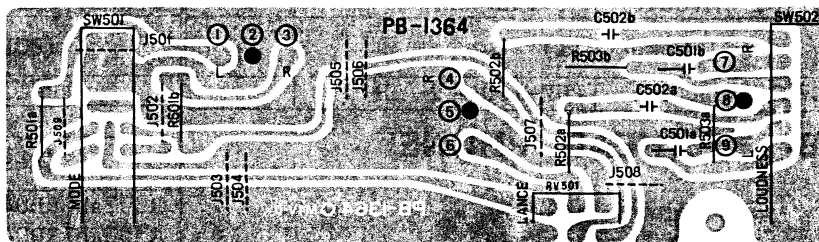
| (Zener) | | | | | |
|---------|--------|--------|--|-----|--|
| D101 | TD0210 | BZ-260 | | 26V | |
| D102 | TD0210 | BZ-260 | | 26V | |

| (IC, Transistor) | | | | | |
|------------------|--------|---------|--|--|--|
| Q101ab | TC0179 | M-5214L | | | |
| Q102ab | TR0320 | 2SA-992 | | | |

| SYMBOL NO. | STOCK NO. | DESCRIPTION | | | REMARK |
|-------------|-----------|-------------------|---------|----|--------|
| (Switch) | | | | | |
| SW101 | SS0139 | Slide, SSR-24351D | | | |
| (Capacitor) | | | | | |
| C101 | CK0157 | 0.047 μ F | 25WV | Ce | |
| C102ab | CE0781 | 22 μ F | 35WV LR | E1 | |
| C103ab | CC0006 | 47PF | 50WV | Ce | |
| C104ab | CC0006 | 47PF | 50WV | Ce | |
| C105ab | CE0784 | 0.33 μ F | 50WV LR | E1 | |
| C106ab | CE0784 | 0.33 μ F | 50WV LR | E1 | |
| C107ab | CQ1617 | 3900PF | 50WV | My | |

| (PCB Board) | | | | | |
|------------------|--------|------------------|---------|----|--|
| | PD1363 | PB-1363, 4, 5, 6 | | | |
| (IC, Transistor) | | | | | |
| C108ab | CQ1618 | 0.015 μ F | 50WV | My | |
| C109ab | CE1709 | 33 μ F | 10WV | E1 | |
| C110ab | CE0787 | 2.2 μ F | 50WV LR | E1 | |
| C111 | CE1744 | 220 μ F | 35WV | E1 | |
| C112 | CE1744 | 220 μ F | 35WV | E1 | |
| C113 | CQ1441 | 6800PF | 50WV | St | |
| C114 | CQ1441 | 6800PF | 50WV | St | |

PB-1364-MODE, LOUDNESS, BALANCE CONTROL

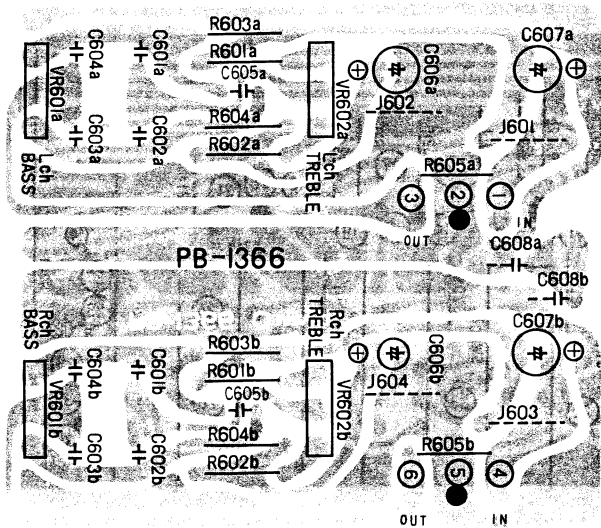


| (Switch, Potentiometer) | | | | | |
|-------------------------|--------|--------------------|--|--|--|
| SW501ab | SP0182 | Push, SUF-12(9250) | | | |
| SW502ab | SP0183 | Push, SUFR-22 | | | |
| VR501ab | RV0275 | 250K 1Z | | | |

| (Resistor, Capacitor, PCB Board) | | | | | |
|----------------------------------|--------|------------------|------|----|--|
| R501ab | RD0456 | 6.8K Ω | 1/3W | Rd | |
| R503ab | RD0456 | 6.8K Ω | 1/3W | Rd | |
| C501ab | CQ1323 | 0.068 μ F | 50WV | My | |
| | PD1363 | PB-1363, 4, 5, 6 | | | |

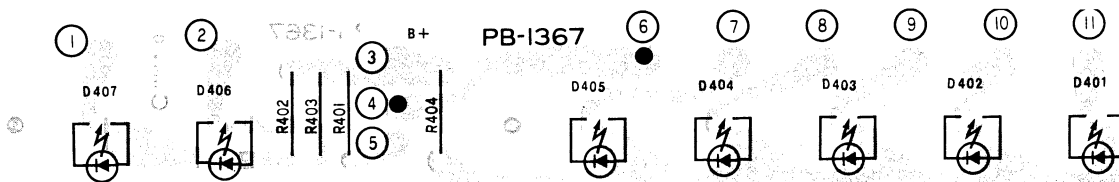
PB-1366 · 1367 · 1368 PARTS LIST

PB-1366-TONE CONTROL



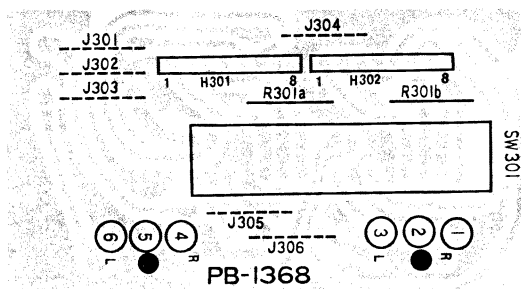
| SYMBOL NO. | STOCK NO. | DESCRIPTION | | | REMARK |
|---------------------------|-----------|------------------|------|----|--------|
| (Resistor) Unit: Ω | | | | | |
| R601ab | RD0463 | 1.8K | 1/3W | Rd | |
| R602ab | RD0472 | 330 | 1/3W | Rd | |
| R603ab | RD0455 | 8.2K | 1/3W | Rd | |
| R604ab | RD0464 | 1.5K | 1/3W | Rd | |
| R605ab | RD0444 | 68K | 1/3W | Rd | |
| (Capacitor) | | | | | |
| C601ab | CQ1308 | 3900PF | 50WV | My | |
| C602ab | CQ1317 | 0.022 μ F | 50WV | My | |
| C603ab | CQ1319 | 0.033 μ F | 50WV | My | |
| C604ab | CQ1311 | 6800PF | 50WV | My | |
| C605ab | CQ1323 | 0.068 μ F | 50WV | My | |
| (Potentiometer) | | | | | |
| VR601ab | RV0276 | 50K Ω | C | | |
| VR602ab | RV0276 | 50K Ω | C | | |
| (PCB Board) | | | | | |
| | PD1363 | PB-1363, 4, 5, 6 | | | |

PB-1367-LED, PILOT



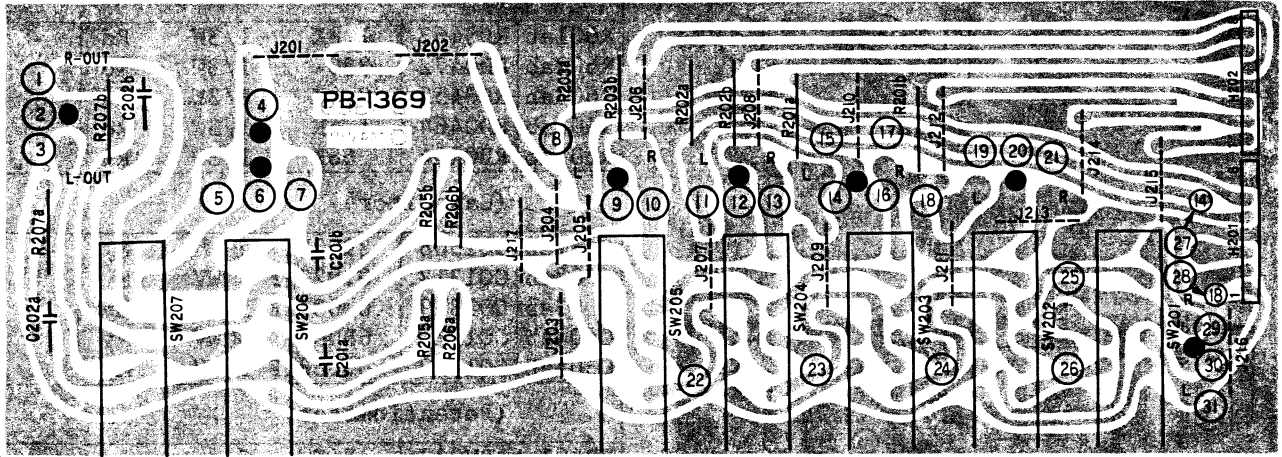
| SYMBOL NO. | STOCK NO. | DESCRIPTION | | | REMARK |
|---------------------------|-----------|--------------------|------|----|--------|
| (Resistor) Unit: Ω | | | | | |
| R401 | RD0463 | 1.8K | 1/3W | Rd | |
| R402 | RD0467 | 820 | 1/3W | Rd | |
| R403 | RD0467 | 820 | 1/3W | Rd | |
| R404 | RD0463 | 1.8K | 1/3W | Rd | |
| (PCB Board) | | | | | |
| | PD1368 | PB-1367, 8, 9 | | | |
| (LED) | | | | | |
| D401 | TD0222 | SEL-1710K (YELLOW) | | | |
| D402 | TD0222 | SEL-1710K (YELLOW) | | | |
| D403 | TD0222 | SEL-1710K (YELLOW) | | | |
| D404 | TD0222 | SEL-1710K (YELLOW) | | | |
| D405 | TD0222 | SEL-1710K (YELLOW) | | | |
| D406 | TD0223 | SEL-1910A (ORANGE) | | | |
| D407 | TD0223 | SEL-1910A (ORANGE) | | | |

PB-1368-REC SELECTOR



| | | | | | |
|-------------|--------|------------------|------|----|--|
| (Switch) | | | | | |
| SW301a | | | | | |
| SW301d | SR0152 | Rotary, SRZW-46N | | | |
| (Resistor) | | | | | |
| R301ab | RD0430 | 1M Ω | 1/3W | Rd | |
| (PCB Board) | | | | | |
| | PD1368 | PB-1367, 8, 9 | | | |

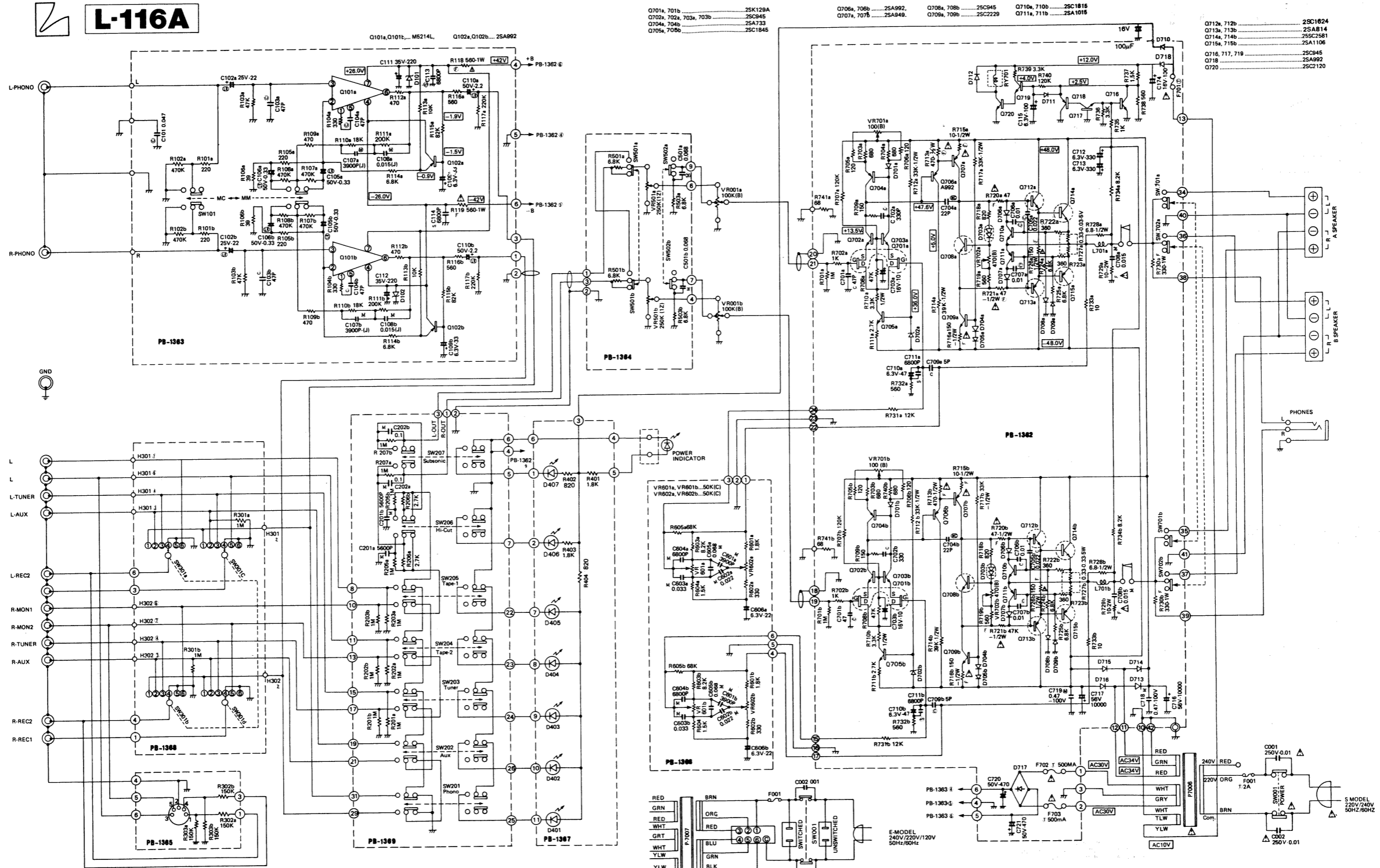
PB-1369-INPUT SELECTOR,HIGH CUT,SUBSONIC



PB-1369 PARTS LIST

| SYMBOL NO. | STOCK NO. | DESCRIPTION | REMARK | SYMBOL NO. | STOCK NO. | DESCRIPTION | REMARK |
|-------------|-----------|---------------|--------|-------------|-----------|----------------|--------|
| (Resistor) | | | | (Capacitor) | | | |
| R201ab | RD0430 | 1M 1/3W Rd | | C201ab | CQ1310 | 5600PF 50WV My | |
| R202ab | RD0430 | 1M 1/3W Rd | | C202ab | CQ1325 | 0.1µF 50WV My | |
| R203ab | RD0430 | 1M 1/3W Rd | | (Switch) | | | |
| R205ab | RD0430 | 1M 1/3W Rd | | SW201 | | | |
| R206ab | RD0461 | 2.7K 1/3W Rd | | SW207 | SP0184 | Push, SUF-73 | |
| R207ab | RD0430 | 1M 1/3W Rd | | | | | |
| (PCB Board) | | | | | | | |
| | PD1368 | PB-1367, 8, 9 | | | | | |

L-116A



NOTE

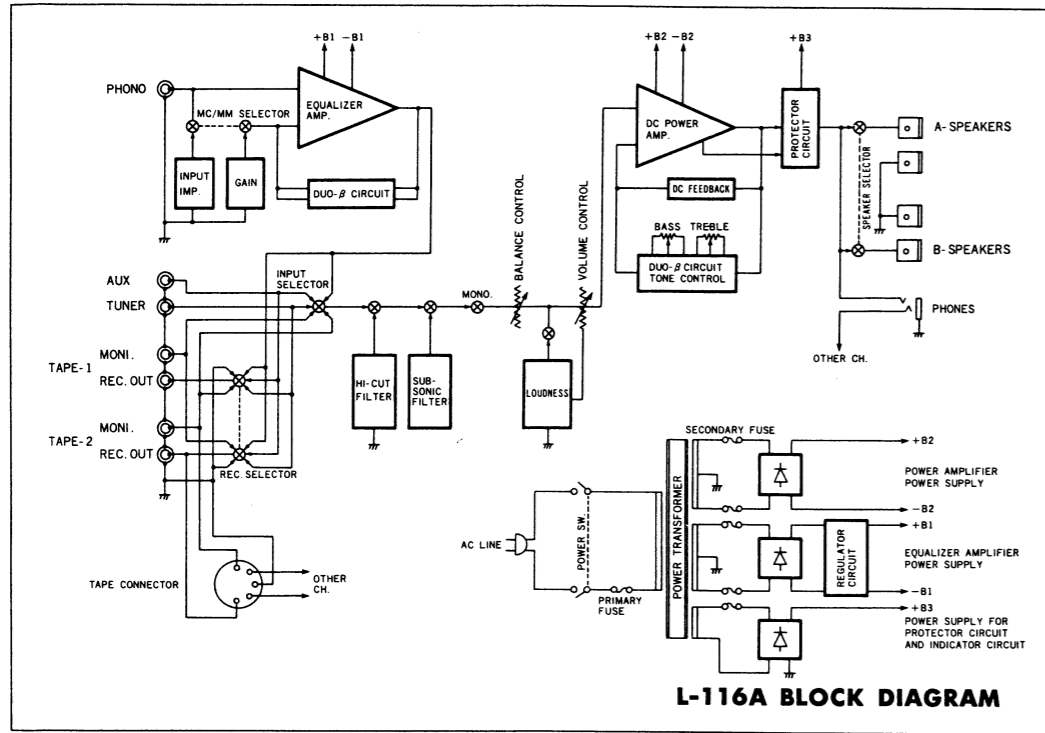
| PCB. NO. | SELECTOR | SPEAKERS A | CONTROLLER |
|----------|----------------------------|------------------|--|
| PB-1362 | SW-701 (a, b) | SPEAKERS A | |
| PB-1362 | SW-702 (a, b) | SPEAKERS B | |
| PB-1363 | SW-101 (a, b, c, d) | MM/MC SELECTOR | |
| PB-1364 | SW-501 (a, b) | MODE | VR-501 (a, b) BALANCE |
| PB-1364 | SW-502 (a, b) | LOUDNESS | VR-601a, VR-601b BASS VR-602a, VR-601b TREBLE |
| PB-1368 | SW-301 (a, b, c, d) | REC. SELECTOR | |
| PB-1369 | SW-201, 202, 203, 204, 205 | INPUT SELECTOR | |
| PB-1369 | SW-206 | HICUT FILTER | |
| PB-1369 | SW-207 | SUB-SONIC FILTER | VR-001 (a, b) VOLUME |

- All resistors are in OHM, 1/4 - watt, unless otherwise specified.
- F Flame-proof resistors
- All Capacitors are in μF , unless otherwise specified.
- Electrolytic capacitors
- Polyester film capacitors, voltage rating 50v
- C Ceramic Capacitors, voltage rating 50v
- S Polystyrene film capacitors, voltage rating 50v.
- MC Dipped mica film capacitors, voltage rating 50v.
- LR Low-leak, electrolytic capacitors
- Transistors and Diodes may be replaced with any types having comparable ratings.
- DC voltage, no input signal
- Due to continued improvements LUX reserve the right to alter the design or the specifications.
- Symbol

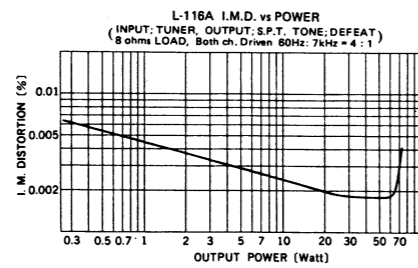
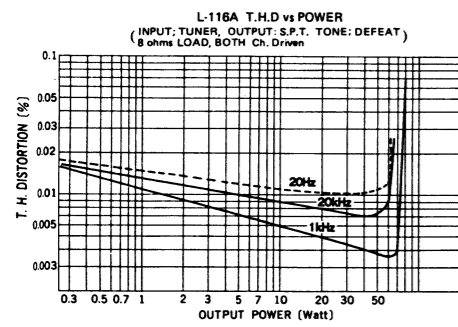
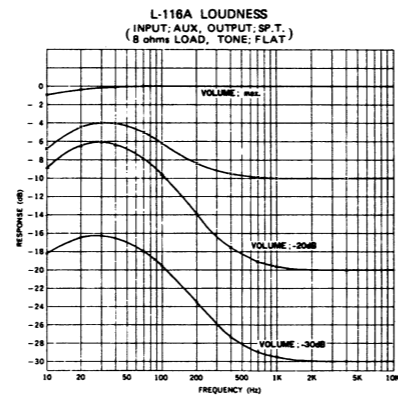
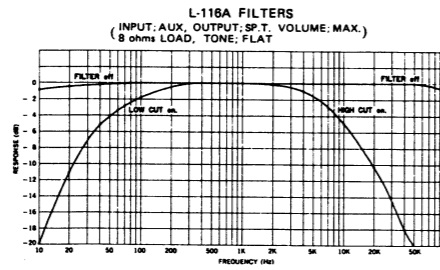
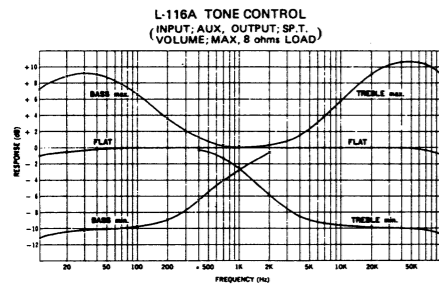
| Bottom View | NPN | PNP | V _{ceo} | V _{ceo} | I _c DC I | P _c | T _j | IT (TYP) (NPN/PNP) |
|-------------|---------|---------|------------------|------------------|---------------------|----------------|----------------|--------------------|
| | 2SC945 | 2SA733 | 60V | 50V | 100mA | 250mW | 125°C | 250MHz/180MHz |
| | 2SC1845 | 2SA992 | 120V | 120V | 50mA | 500mW | 125°C | 110MHz/100MHz |
| | 2SC2229 | 2SA949 | 150V | 150V | 50mA | 800mW | 150°C | 120MHz/120MHz |
| | 2SC2120 | — | 35V | 30V | 800mA | 500mW | 150°C | 120MHz |
| | 2SC2238 | 2SA968 | 160V | 160V | 1.5A | 25W | 150°C | 100MHz/100MHz |
| | 2SC2581 | 2SA1106 | 140V | 140V | — | 100W | 150°C | — |

| Diodes | Symbol No. |
|---------|--|
| IS2473 | D701a, D701b, D704a, D704b, D707a, D705a, D705b, D706a, D706b, D707b, D708a, D708b, D709a, D709b, D711 |
| WZ-120 | D702a, D702b Zener diode |
| STV-2H | D703a, D703b Varistor |
| IN4002 | D710, D718 |
| SIVB-20 | D717 |
| S3V-40 | D713, D714, D715, D716 |
| BZ-260 | D101, D102 Zener diode |

BLOCK DIAGRAMME



STANDARD CURVES



LUX CORPORATION, JAPAN

1-1, 1-CHOME, SHINSENRI-NISHIMACHI, TOYONAKA-SHI, OSAKA
 PHONES: 06-834-0004 CABLE: LUXMAN TOYONAKA TELEX: J63694