

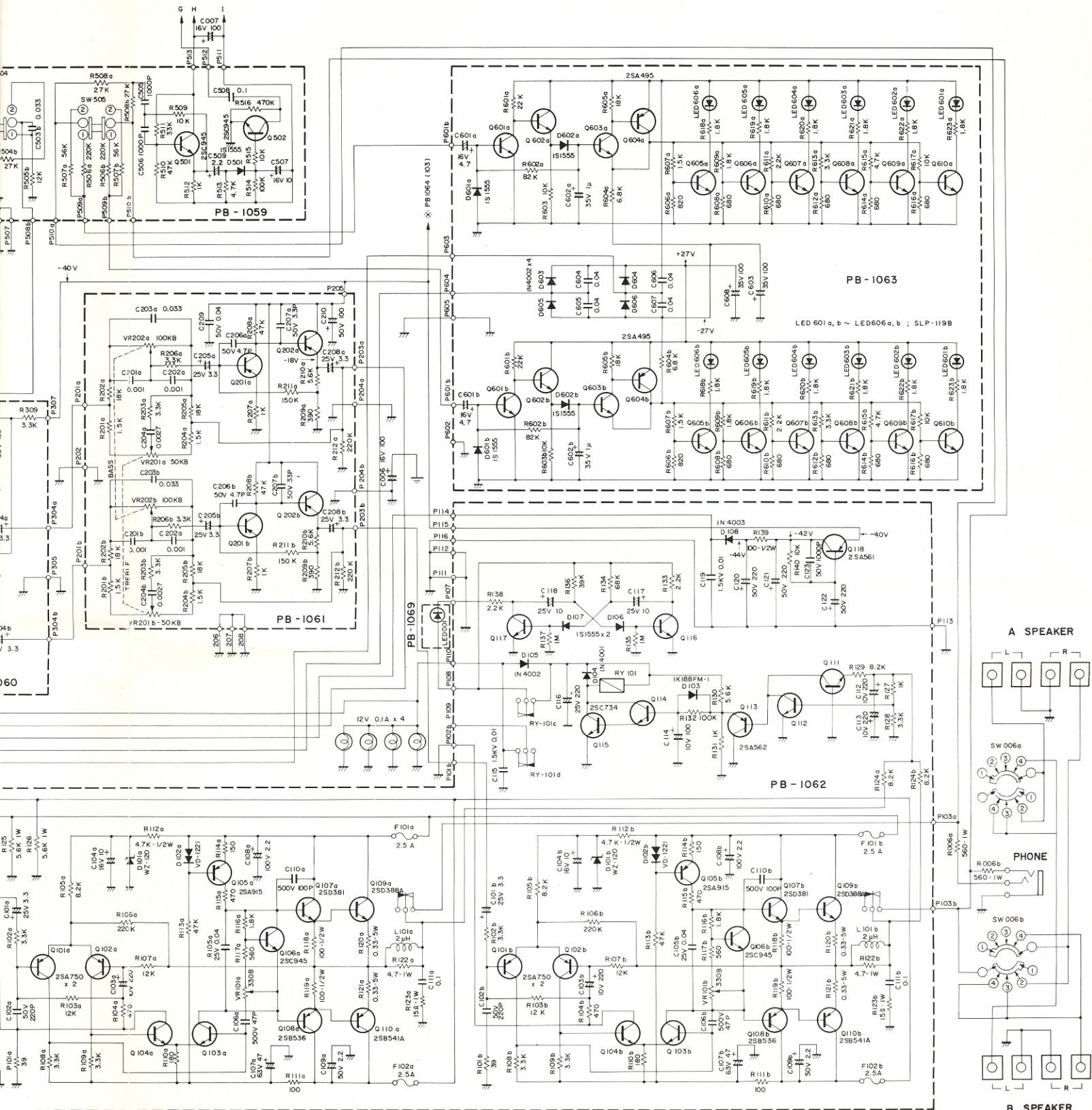
For north European countries, the AC outlet has been removed.

▲ R001 : only for Canada.  
 F006 : 2.5AT (220V north European countries)  
 2.5A (220V, 240V)  
 5A (100V, 120V)

Q101a, 101b, 201a, 201b, 202a, 202b, 301a, 301b, .....	2SA836
Q102a, 102b, 302a, 302b, .....	2SC1345
Q601a, 601b, 602a, 602b, 603a, 603b, 605a, 605b, 606a, .....	2SC733
Q606b, 607a, 607b, 608a, 608b, 609a, 609b, 610a, 610b, .....	2SC733
Q111, 112, 114, 117, .....	2SC733
Q103a, 103b, 104a, 104b, .....	2SC1940

SW001a ~ e
SW002a, b
SW003
SW004
SW005
SW006a, b
SW007
SW008
SW501
SW502
SW503
SW504
SW505

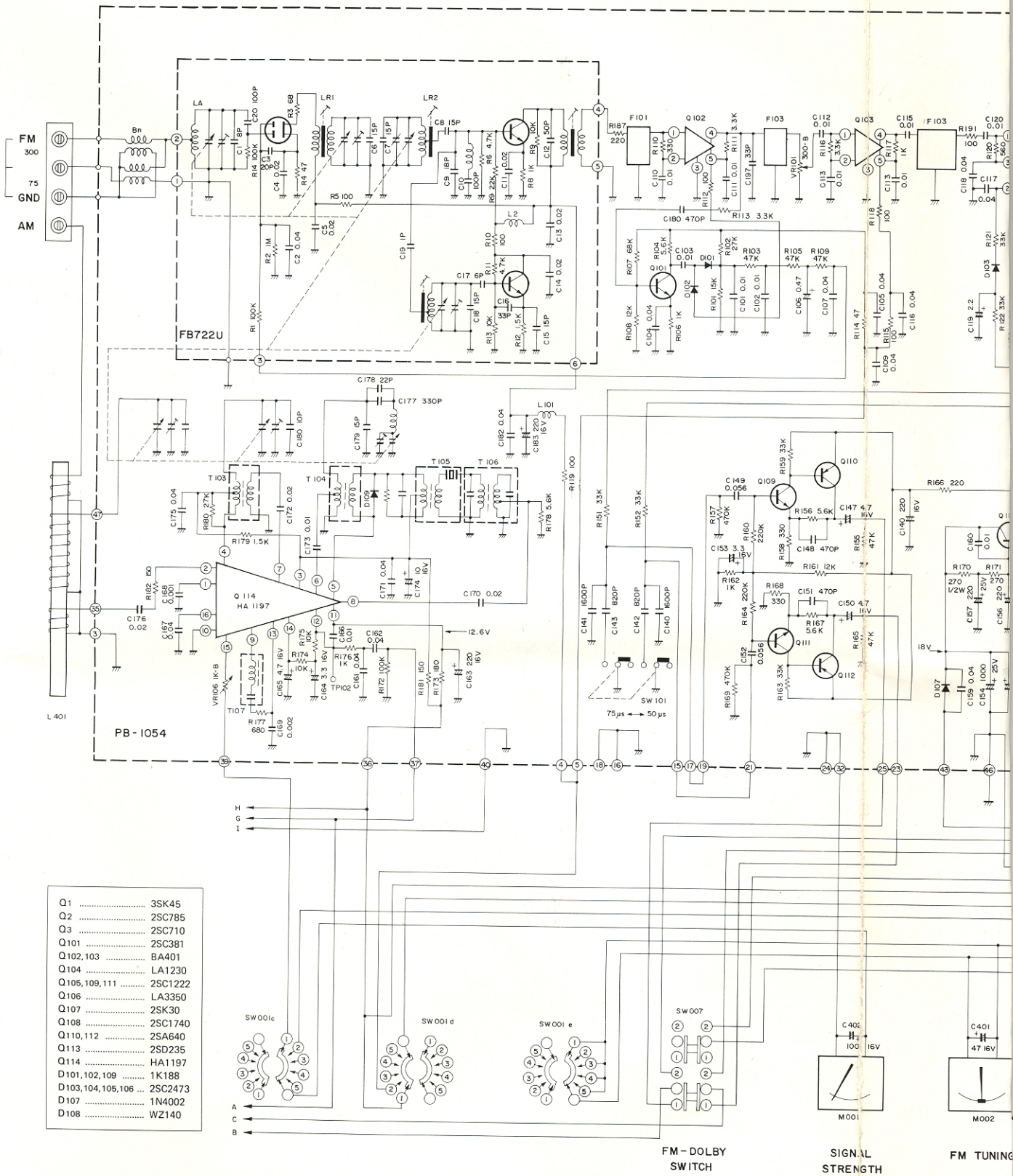




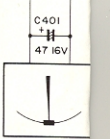
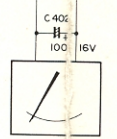
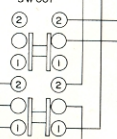
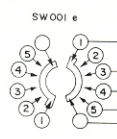
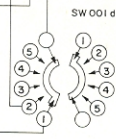
SW 001a - e	FUNCTION	① FM	② AM	③ PHONO 1	④ PHONO 2	⑤ AUX
SW 002a, b	DUBBING	① 1 TO 2	② SOURCE	③ 2 TO 1		
SW 003	MONITOR	① OFF	② ON			
SW 004	MONITOR	① DECK I	② DECK II			
SW 005	MODE	① STEREO	② MONO			
SW 006a, b	SPEAKER	① OFF	② A	③ B	④ A + B	
SW 007	DOLBY	① FM	② DOLBY			
SW 008	POWER					
SW 501	FM MUTING	① OFF	② ON			
SW 502	LOW CUT	① OFF	② ON			
SW 503	HIGH CUT	① OFF	② ON			
SW 504	LOUDNESS	① OFF	② ON			
SW 505	PEAK IND	① 0dB	② -12dB			

1. Unless otherwise specified, all resistors are in ohm  $\frac{1}{4}$  watt, all capacitors are in micro-farad.
2. Transistors and diodes may be replaced with any types having comparable ratings.
3. Due to continued improvements LUX reserve the right to alter the right or specifications





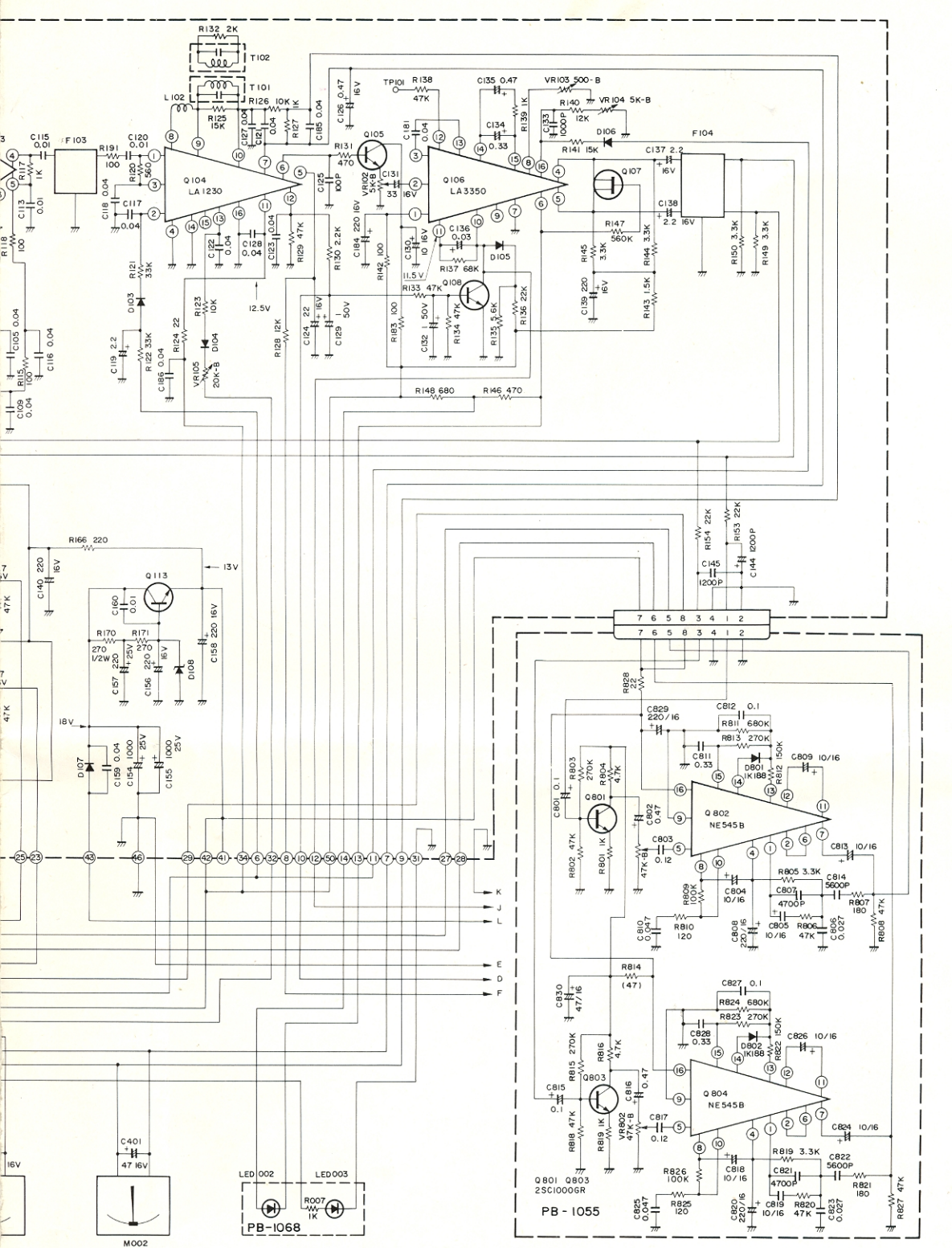
- Q1 ..... 3SK45
- Q2 ..... 2SC785
- Q3 ..... 2SC710
- Q101 ..... 2SC381
- Q102,103 ..... BA401
- Q104 ..... LA1230
- Q105,109,111 ..... 2SC1222
- Q106 ..... LA3350
- Q107 ..... 2SK30
- Q108 ..... 2SC1740
- Q110,112 ..... 2SA640
- Q113 ..... 2SD235
- Q114 ..... HA1197
- D101,102,109 ..... 1K188
- D103,104,105,106 ..... 2SC2473
- D107 ..... 1N4002
- D108 ..... WZ140



FM - DOLBY SWITCH

SIGNAL STRENGTH

FM TUNING



AL  
6TH

FM TUNING

STEREO DOLBY  
IND IND

R-1050 RF SECTION