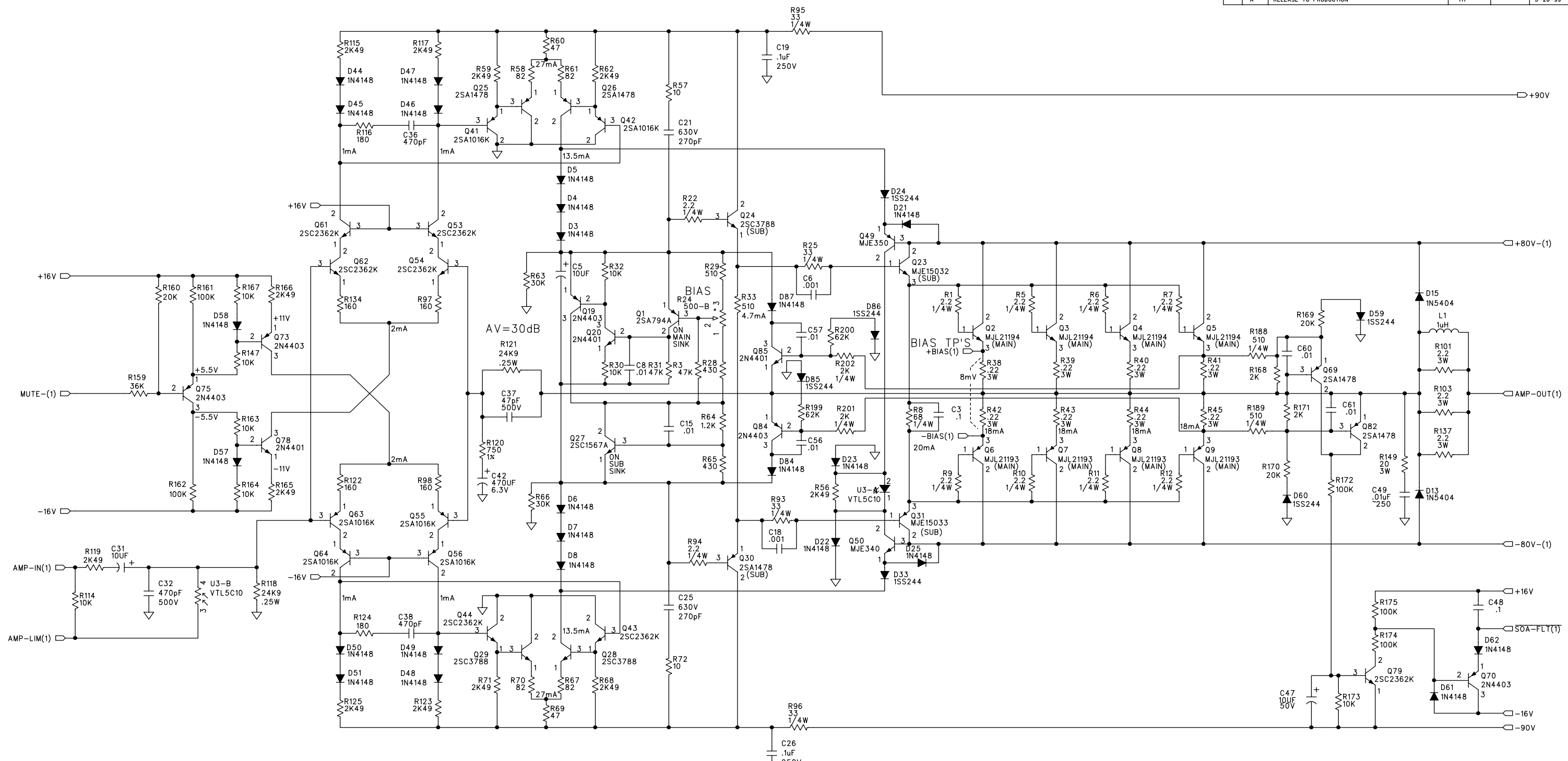


DWG. NO.	990-255-00	SHT	1	REV:	A	1
REV:	ECO#	DESCRIPTION	REV. BY:	APP. BY:	DATE	
1		MADE FROM 990-081-00 W/ DESIGNS CHANGES. INCORP ECOS: 1092,1098, 1142, 1170, 1203, 104, 1359, 1400, 1433 218, 2134	WGW		2-12-99	
A		RELEASE TO PRODUCTION	TH		3-28-99	



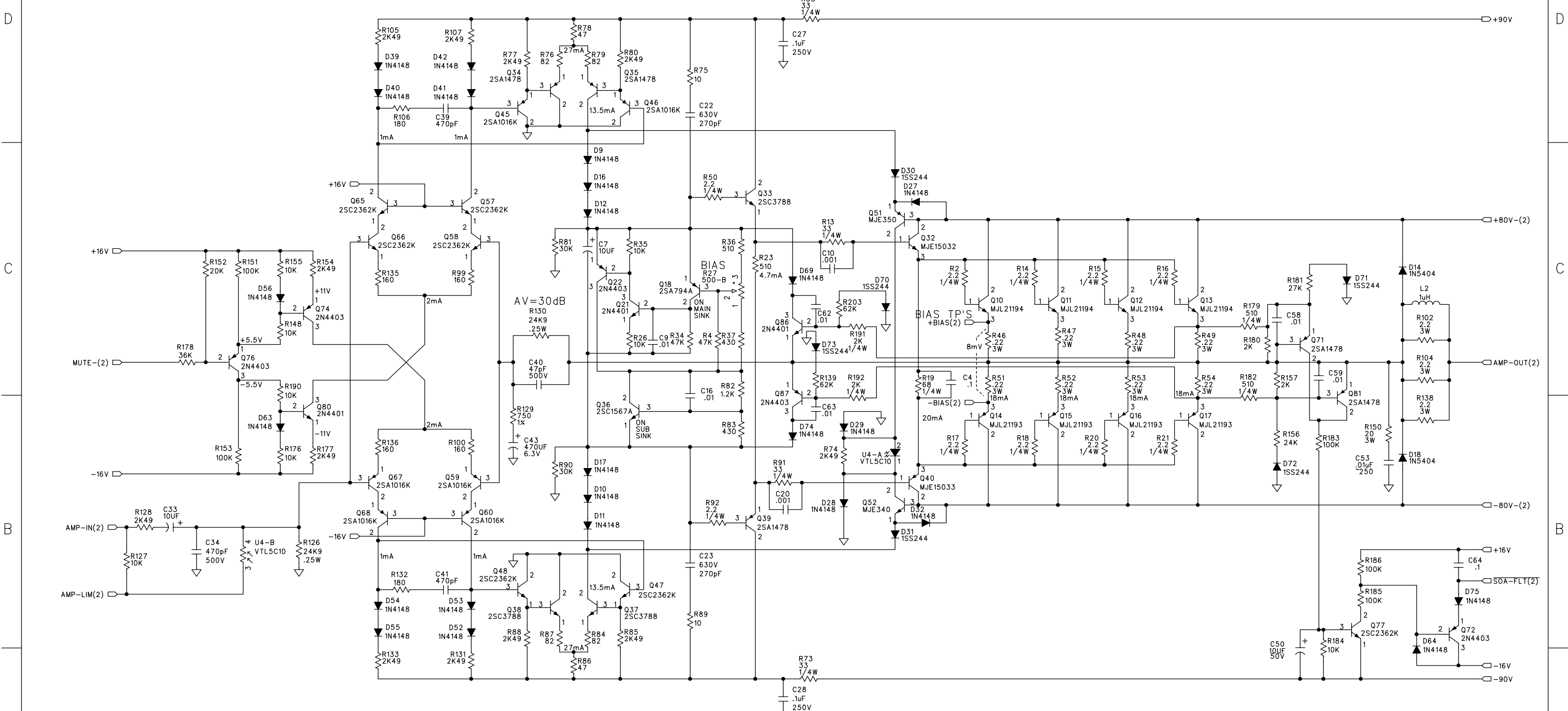
- 450-255-00 PCB, MAIN M-1400-S2
- 400-080-00 FUSE CLIP PC MT 5mm DIA
- 400-129-00 FUSE CLIP PC MT .25" DIA

UNLESS OTHERWISE SPECIFIED DIMENSIONS ARE IN INCHES	APPROVALS	DATE
TOLERANCES ARE:	DRAWN:	1-22-99
FRACTIONS: DECIMALS: ANGLES:	CAM JONES	
±NA .XX ±.01 ±NA	CHECKED:	
.XXX ±.005	NP ENG:	
MATERIAL:	MATERIAL:	
SEE NOTES	MFG:	
FINISH:	MFG ENG:	
SEE NOTES	ISSUED:	
DO NOT SCALE DRAWING		

**MACKIE**  
Mackie Designs Inc. Woodinville, Wa.

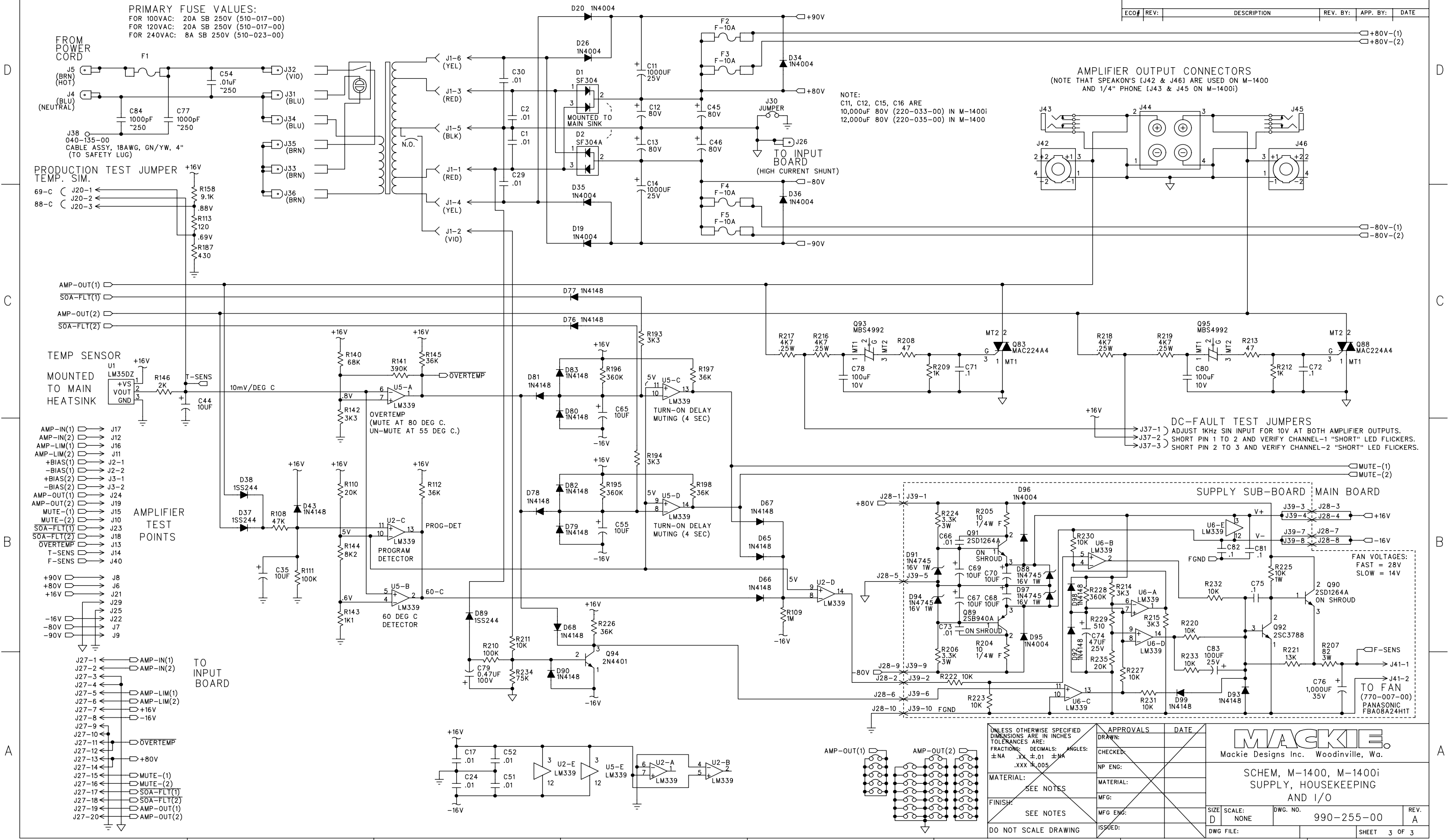
SCHEM, M-1400, M-1400i  
CH-1 MAIN AMP

SIZE	SCALE:	DWG. NO.	REV.
D	NONE	990-255-00	A
DWG FILE:			SHEET 1 OF 3



UNLESS OTHERWISE SPECIFIED DIMENSIONS ARE IN INCHES TOLERANCES ARE: FRACTIONS: DECIMALS: ANGLES: ±NA .XX ±.01 ±NA .XXX ±.005 MATERIAL: SEE NOTES FINISH: SEE NOTES DO NOT SCALE DRAWING	APPROVALS	DATE	<p>SCHEM, M-1400, M-1400i CH-2 MAIN AMP</p>
	DRAWN:		
	CHECKED:		
	NP ENG:		
	MATERIAL:		
MFG:			
MFG ENG:			SIZE: D SCALE: NONE DWG. NO. 990-255-00 REV. A
ISSUED:			DWG FILE: SHEET 2 OF 3

ECO#	REV.	DESCRIPTION	REV. BY:	APP. BY:	DATE



APPROVALS		DATE
CHECKED:		
NP ENG:		
MATERIAL:		
MFG:		
MFG ENG:		
ISSUED:		

UNLESS OTHERWISE SPECIFIED DIMENSIONS ARE IN INCHES  
 TOLERANCES ARE:  
 FRACTIONS: DECIMALS: ANGLES:  
 ±.NA .XX ±.01 ±NA  
 .XXX ±.005

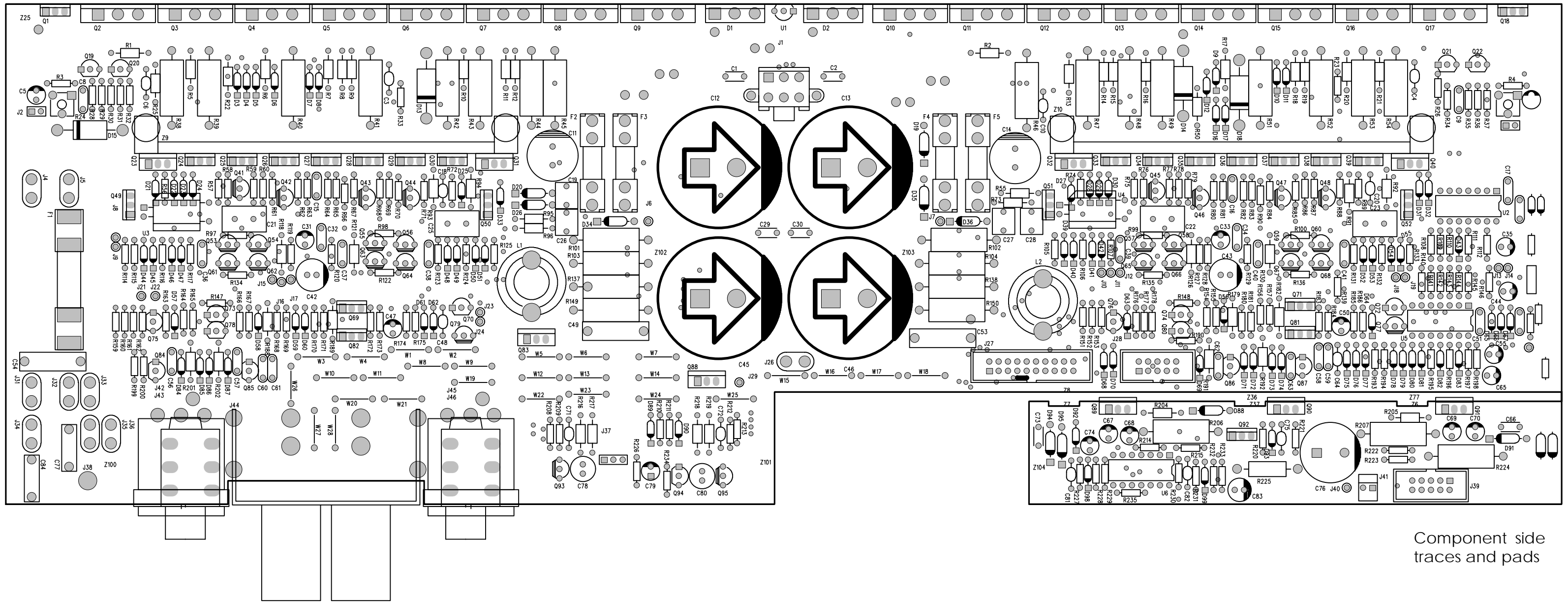
**MATERIAL:** SEE NOTES  
**FINISH:** SEE NOTES

**DO NOT SCALE DRAWING**

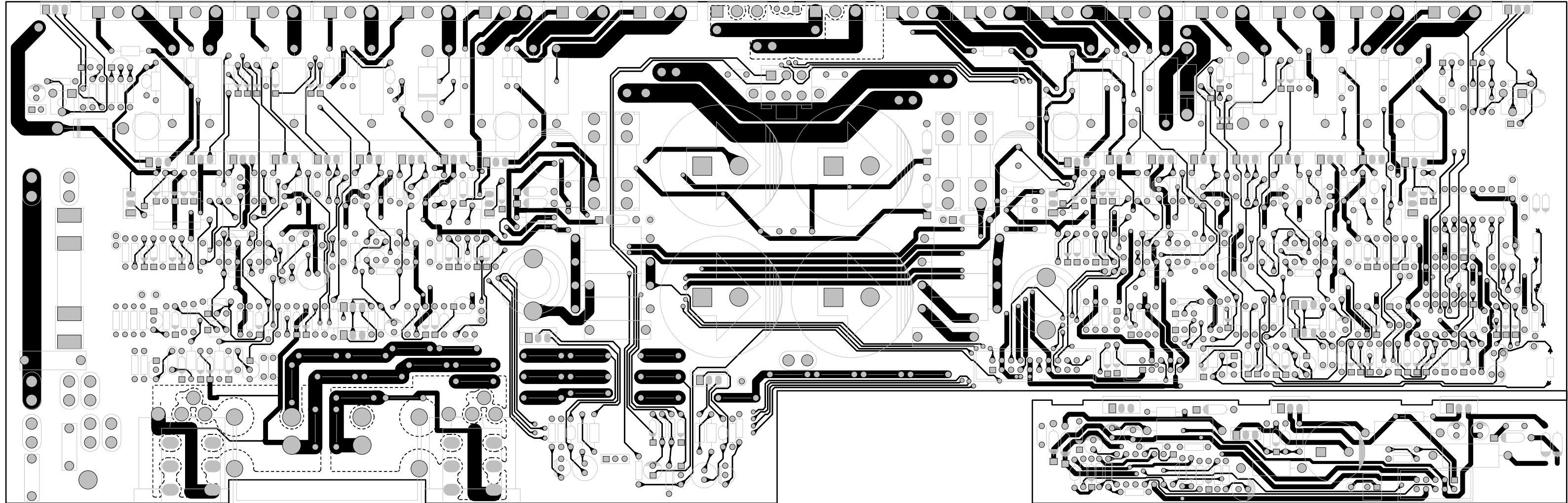
**MACKIE**  
 Mackie Designs Inc. Woodinville, Wa.

SCHEM, M-1400, M-1400i  
 SUPPLY, HOUSEKEEPING  
 AND I/O

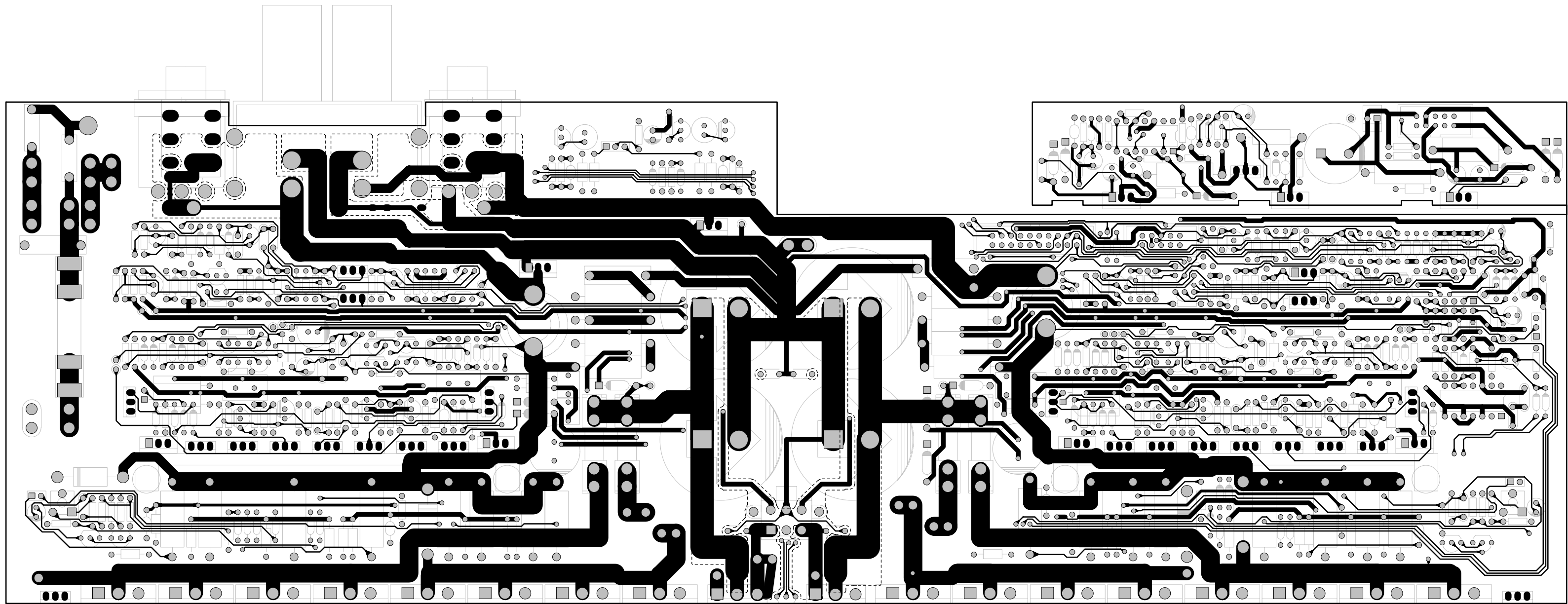
SIZE: D SCALE: NONE DWG. NO. 990-255-00 REV. A  
 DWG FILE: SHEET 3 OF 3



Component side traces and pads



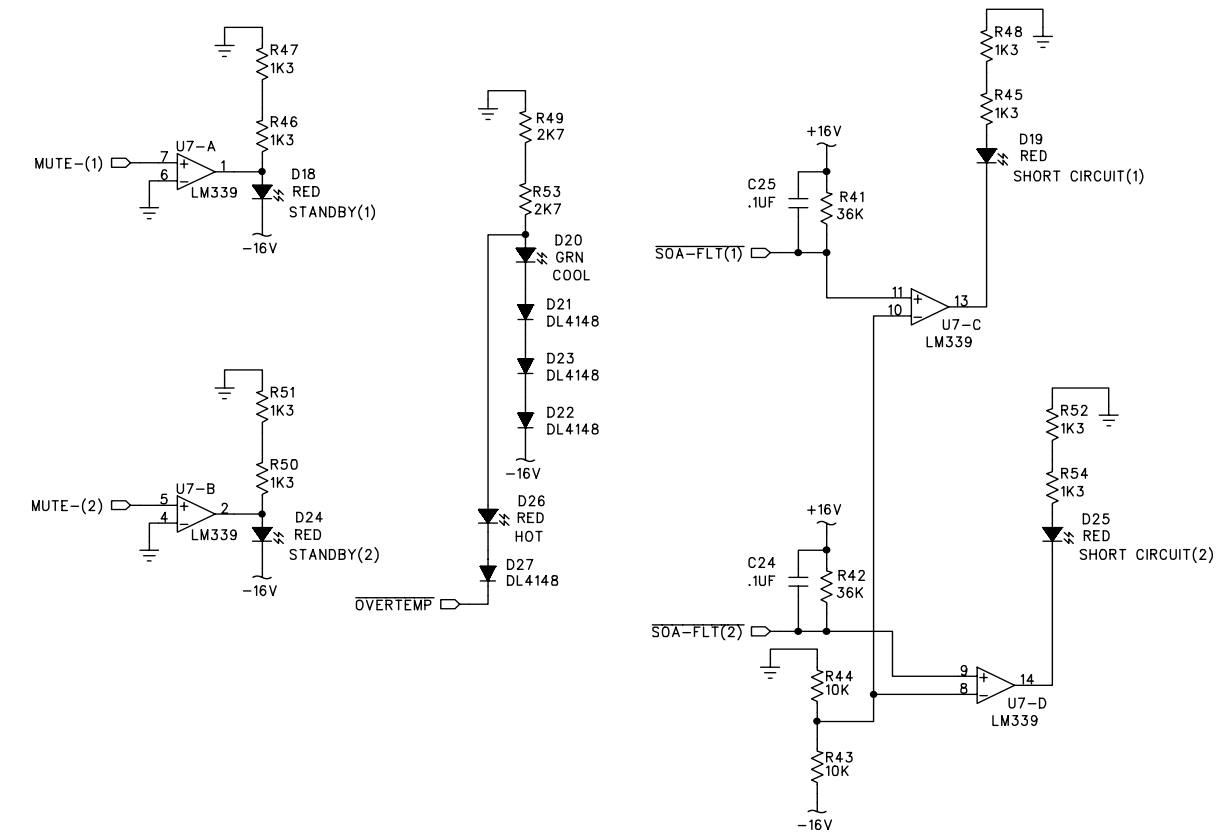
Component side  
traces and pads



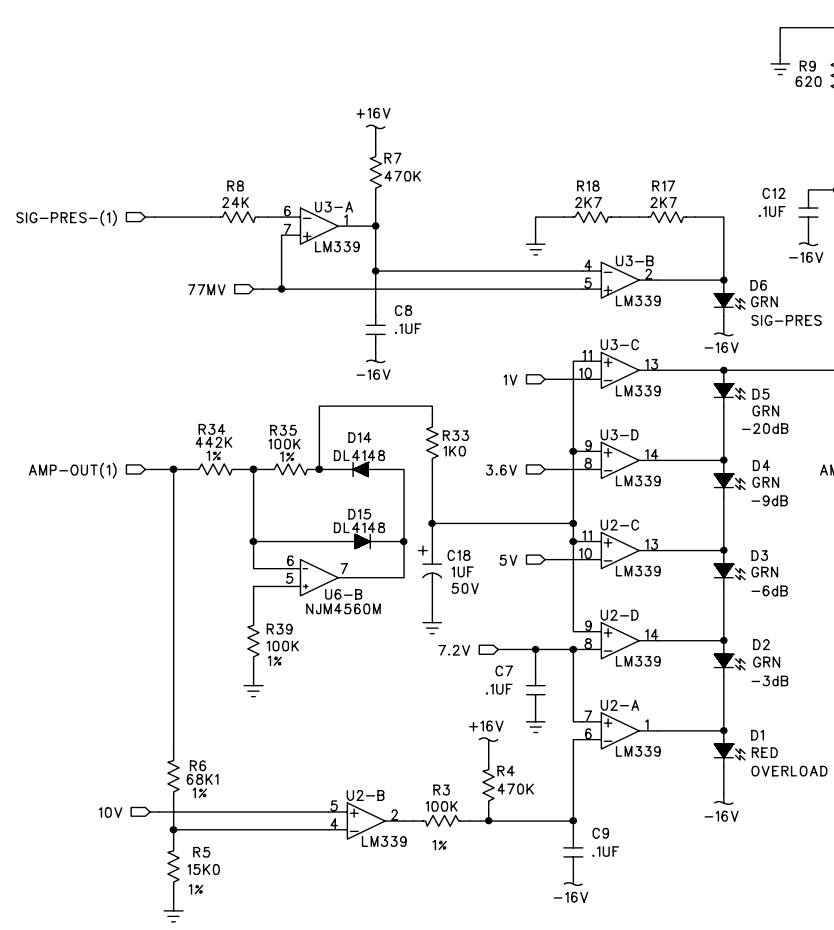
Solder side  
traces and pads

DWG. NO.	990-254-00	SHT	1	REV.	A	1
ECO#	REV.	DESCRIPTION	REV. BY:	APP. BY:	DATE	
1		MADE FROM 990-080 W/DESIGN CHANGES. INCORP ECOS: 1116, 1118, 1121, 1137, 1327, 1359 AND 2100.	TH		2-10-99	
A		RELEASE TO PRODUCTION	TH		3-26-99	

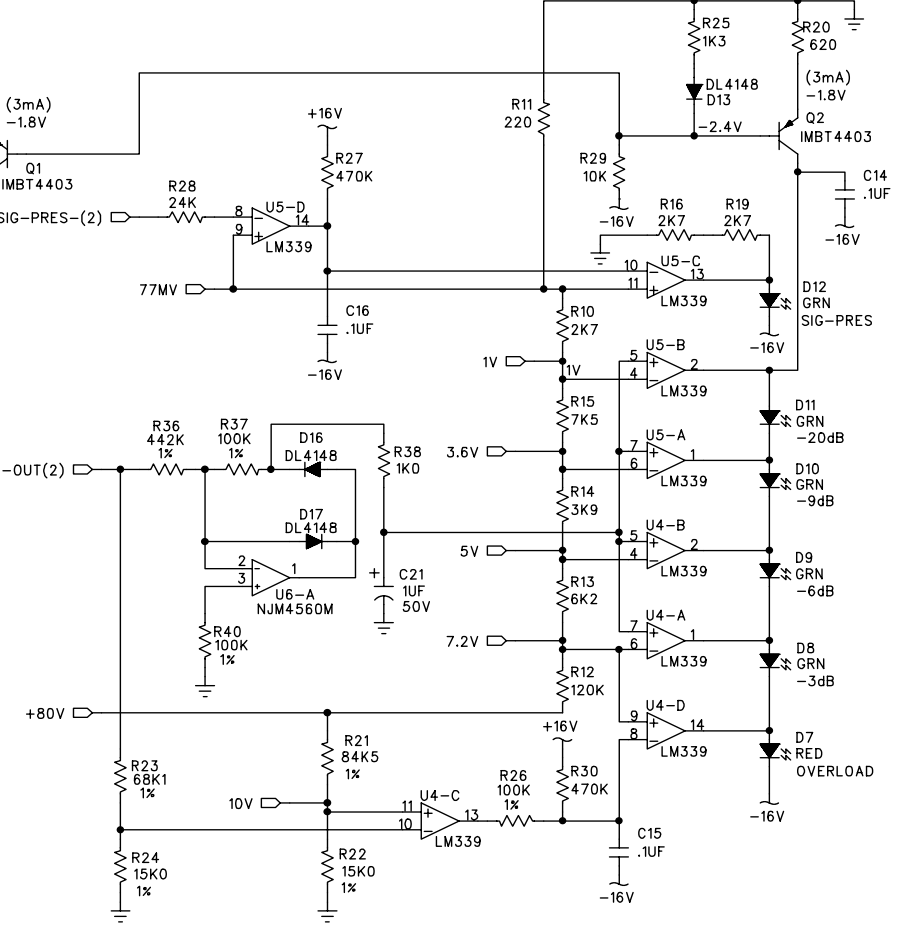
### AMPLIFIER STATUS INDICATORS



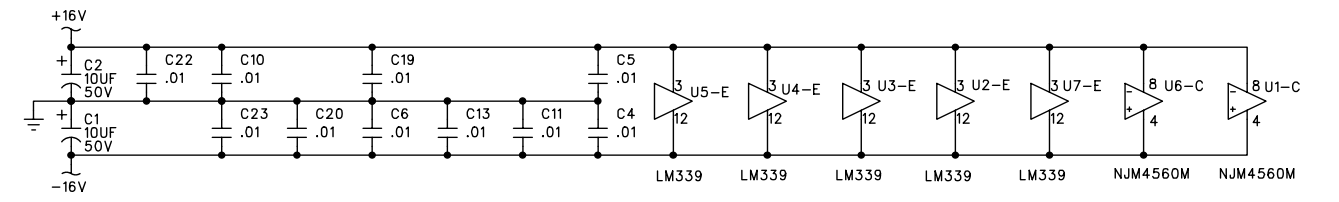
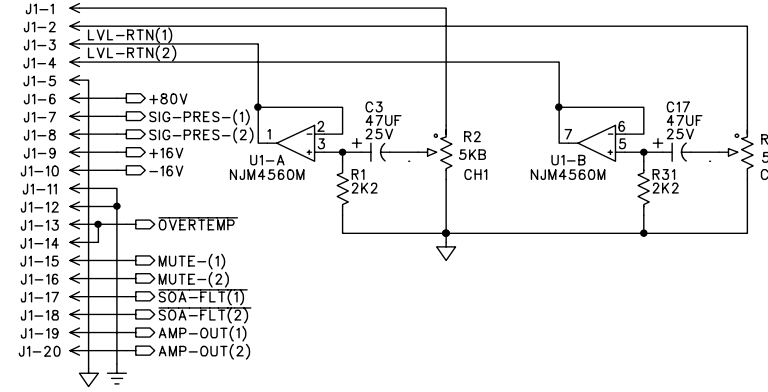
### CH1 METER



### CH2 METER

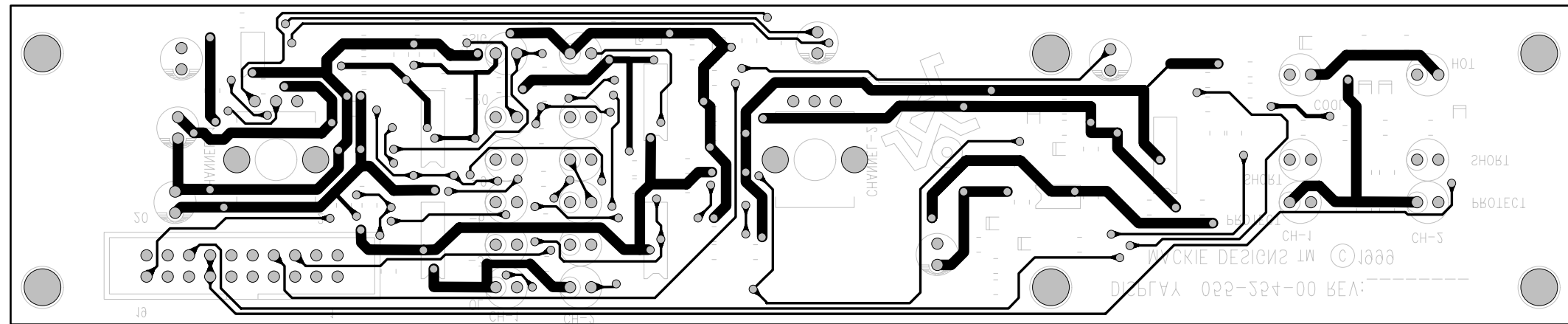


### TO INPUT BOARD OUTPUT LEVEL

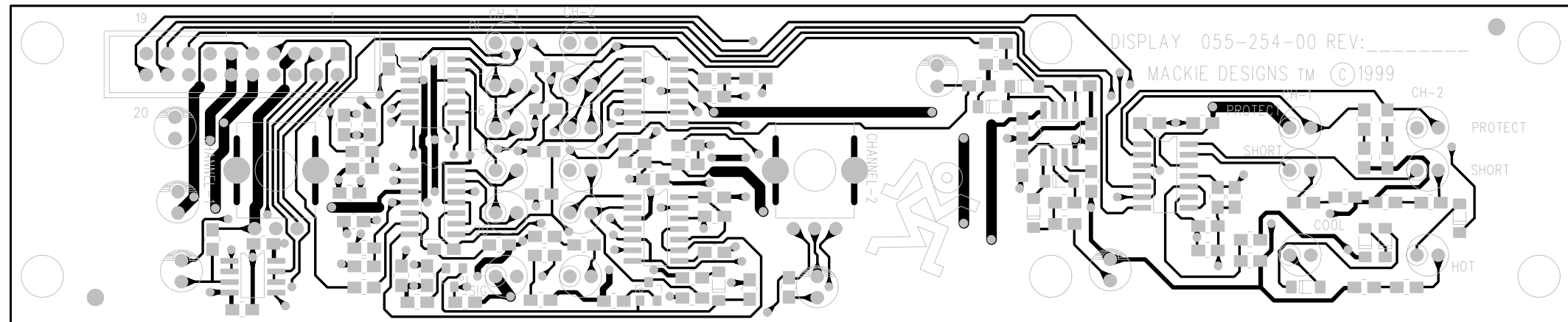


UNLESS OTHERWISE SPECIFIED DIMENSIONS ARE IN INCHES TOLERANCES ARE: FRACTIONS: DECIMALS: ANGLES: ±NA .XX ±.01 ±MA .XXX ±.005	APPROVALS	DATE
	DRAWN: trh	2-9-99
	CHECKED:	
	NP ENG:	
MATERIAL:	MATERIAL:	
SEE NOTES	MFG:	
FINISH:	MFG ENG:	
SEE NOTES	ISSUED:	
DO NOT SCALE DRAWING		

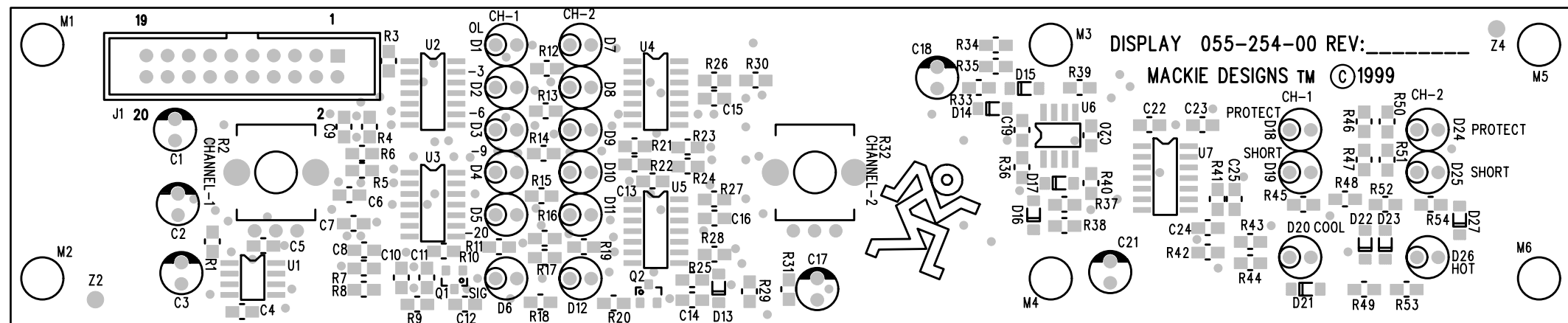
<b>MACKIE</b> Mackie Designs Inc. Woodinville, Wa.	
SCHEMATIC, DISPLAY, M1400 S2	
SIZE: D	SCALE: NONE
DWG. NO. 990-254-00	REV. A
DWG. FILE:	SHEET 1 OF 1



Solder side traces and pads



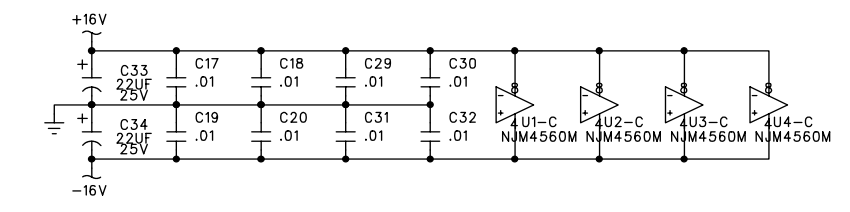
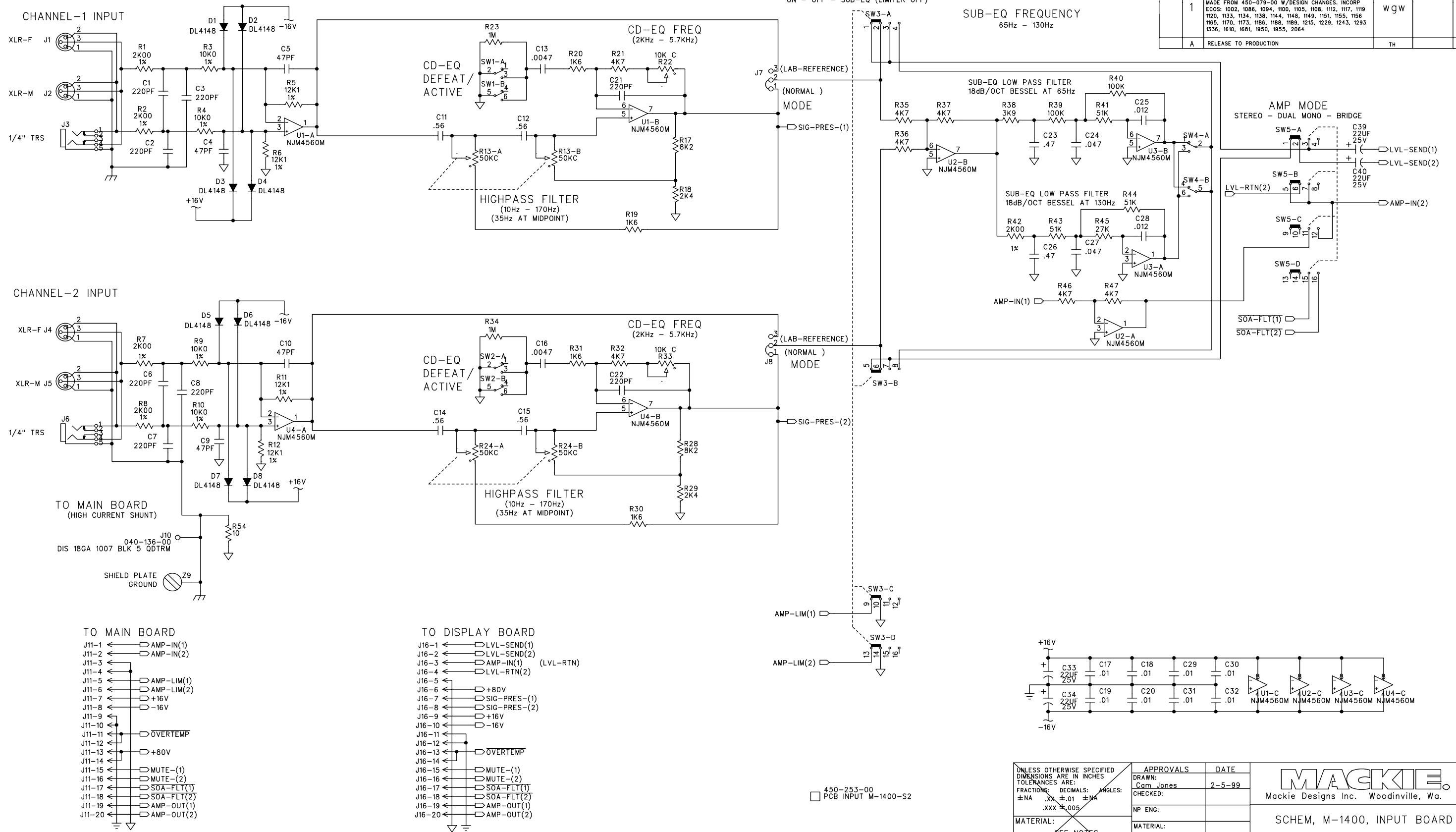
Component side traces and pads



Component side

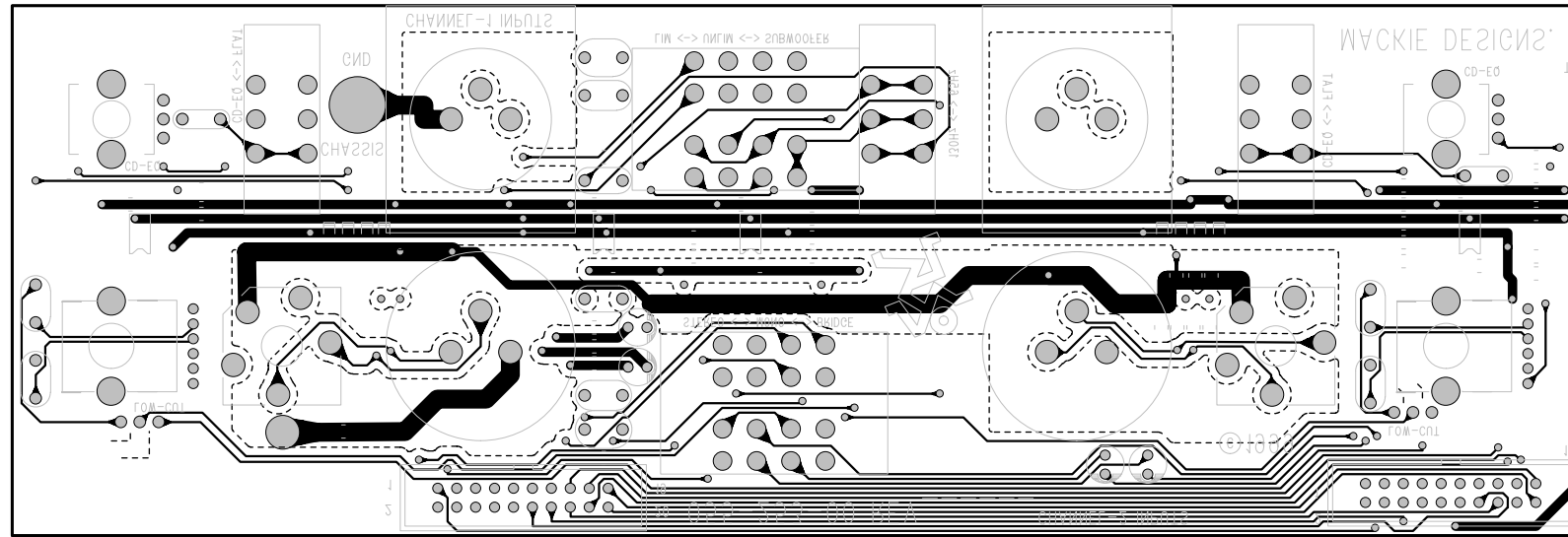


DWG. NO.	990-253-00	SHT	1	REV.	A
ECO#	REV.	DESCRIPTION	REV. BY:	APP. BY:	DATE
1	A	MADE FROM 450-079-00 W/DESIGN CHANGES. INCORP ECOS: 1002, 1086, 1094, 1100, 1105, 1108, 1112, 1117, 1119 1120, 1133, 1134, 1136, 1144, 1148, 1149, 1151, 1155, 1156 1165, 1170, 1173, 1186, 1188, 1189, 1215, 1229, 1243, 1293 1336, 1610, 1681, 1950, 1955, 2064	WJW		2-12-99
		RELEASE TO PRODUCTION	TH		3-26-99

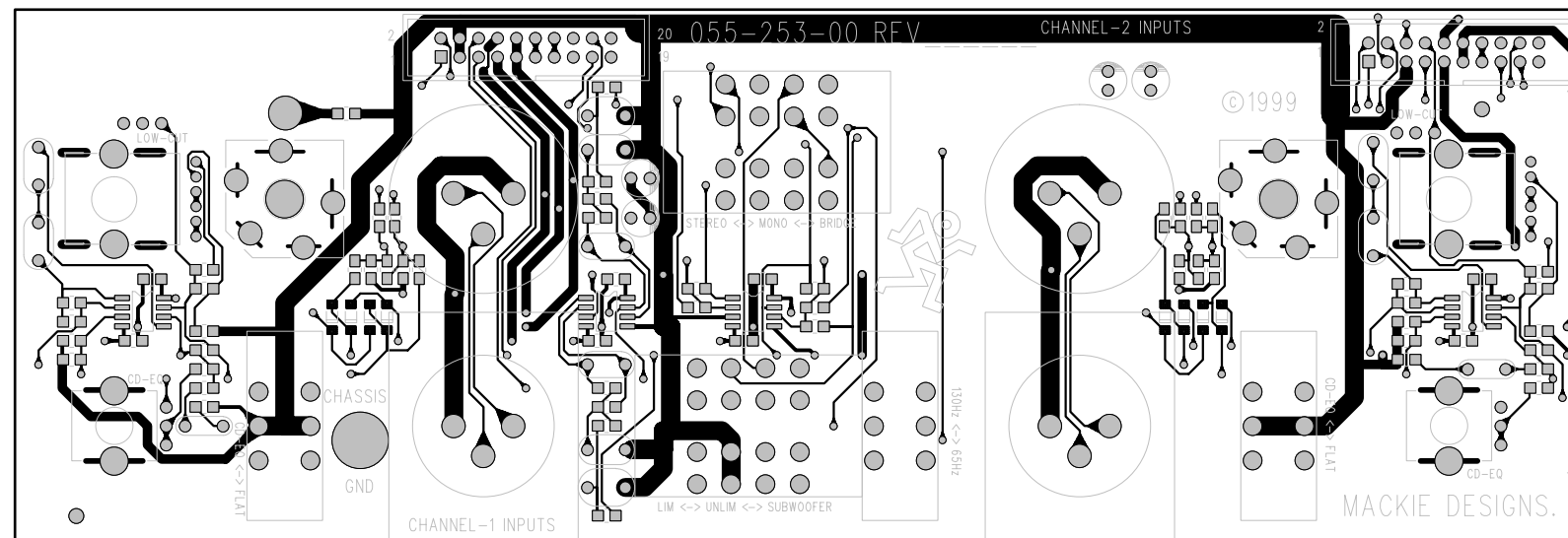


- TO MAIN BOARD**
- J11-1 AMP-IN(1)
  - J11-2 AMP-IN(2)
  - J11-3
  - J11-4
  - J11-5 AMP-LIM(1)
  - J11-6 AMP-LIM(2)
  - J11-7 +16V
  - J11-8 -16V
  - J11-9
  - J11-10
  - J11-11 OVERTEMP
  - J11-12
  - J11-13 +80V
  - J11-14
  - J11-15 MUTE-(1)
  - J11-16 MUTE-(2)
  - J11-17 SOA-FLT(1)
  - J11-18 SOA-FLT(2)
  - J11-19 AMP-OUT(1)
  - J11-20 AMP-OUT(2)
- TO DISPLAY BOARD**
- J16-1 LVL-SEND(1)
  - J16-2 LVL-SEND(2)
  - J16-3 AMP-IN(1) (LVL-RTN)
  - J16-4 LVL-RTN(2)
  - J16-5
  - J16-6 +80V
  - J16-7 SIG-PRES-(1)
  - J16-8 SIG-PRES-(2)
  - J16-9 +16V
  - J16-10 -16V
  - J16-11
  - J16-12
  - J16-13 OVERTEMP
  - J16-14
  - J16-15 MUTE-(1)
  - J16-16 MUTE-(2)
  - J16-17 SOA-FLT(1)
  - J16-18 SOA-FLT(2)
  - J16-19 AMP-OUT(1)
  - J16-20 AMP-OUT(2)

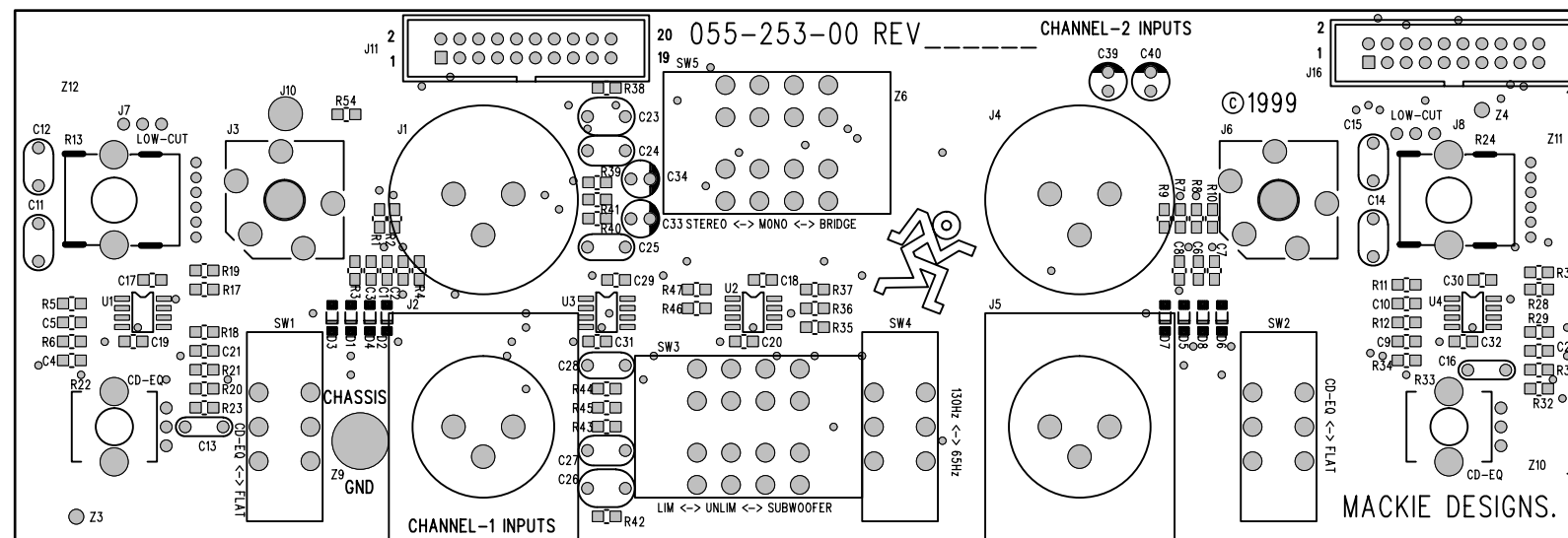
UNLESS OTHERWISE SPECIFIED DIMENSIONS ARE IN INCHES TOLERANCES ARE: FRACTIONS: DECIMALS: ANGLES: ±NA .XX ±.01 ±MA .XXX ±.005	APPROVALS	DATE	<b>MACKIE</b> Mackie Designs Inc. Woodinville, Wa.
	DRAWN: Cam Jones	2-5-99	
MATERIAL: SEE NOTES	MATERIAL:		SCHEM, M-1400, INPUT BOARD
FINISH: SEE NOTES	MFG:		
DO NOT SCALE DRAWING	ISSUED:		SIZE: D SCALE: NONE DWG. NO. 990-253-00 SHEET 1 OF 1



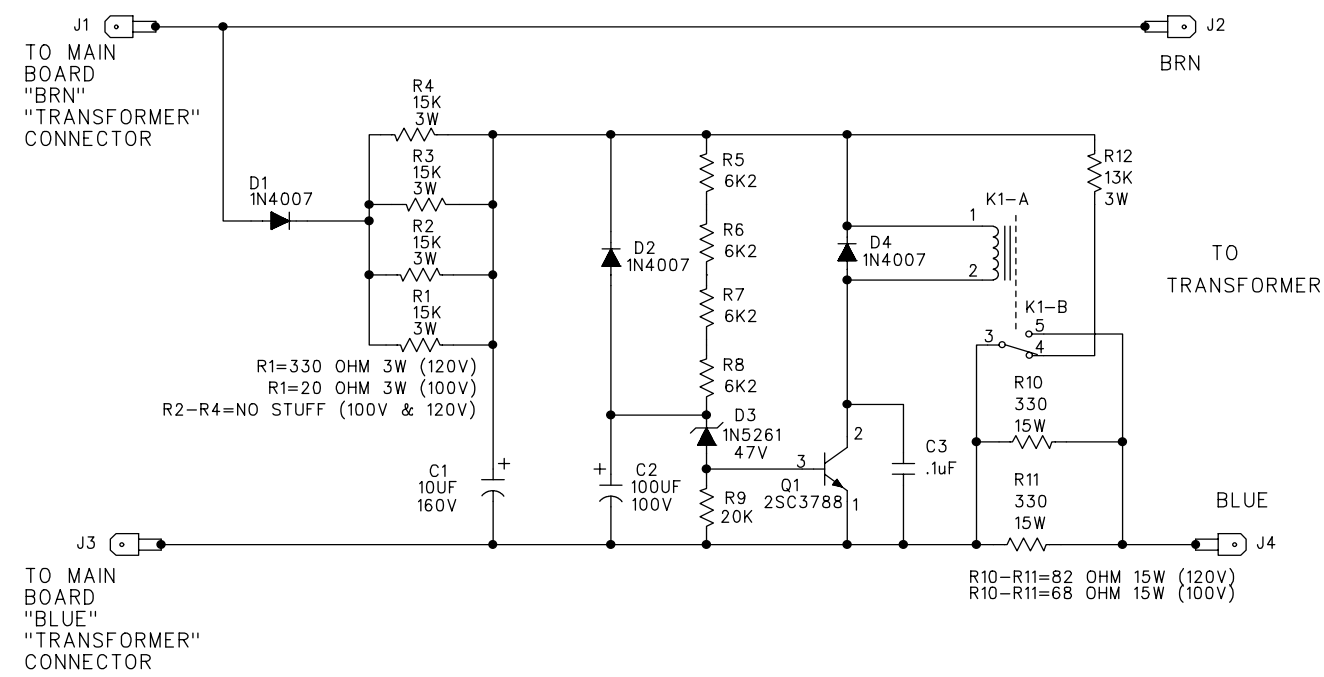
Solder side traces and pads



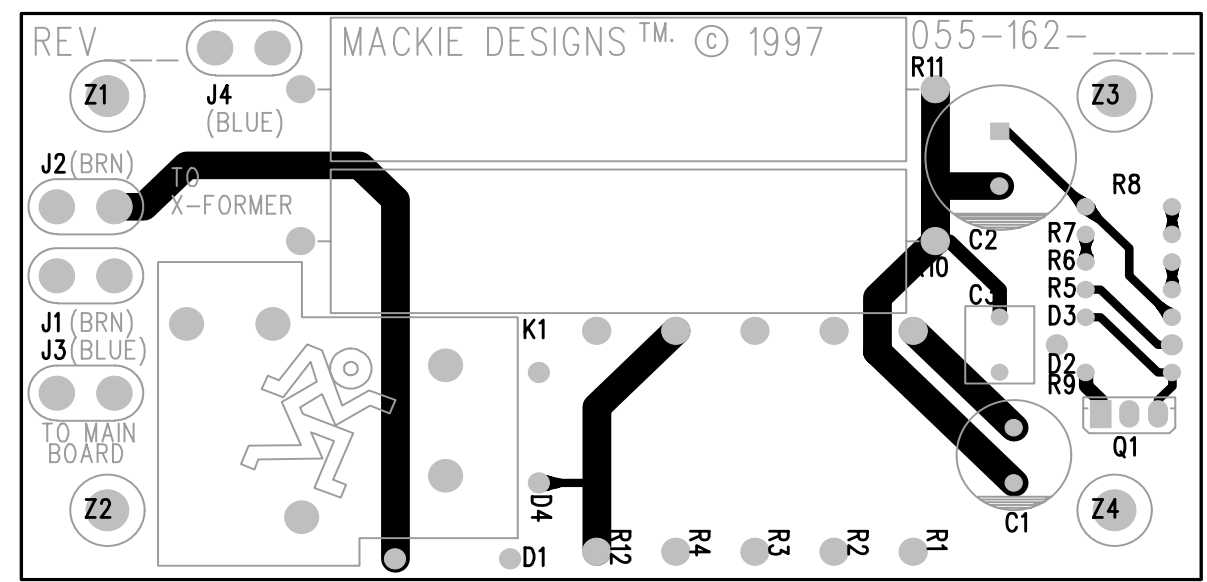
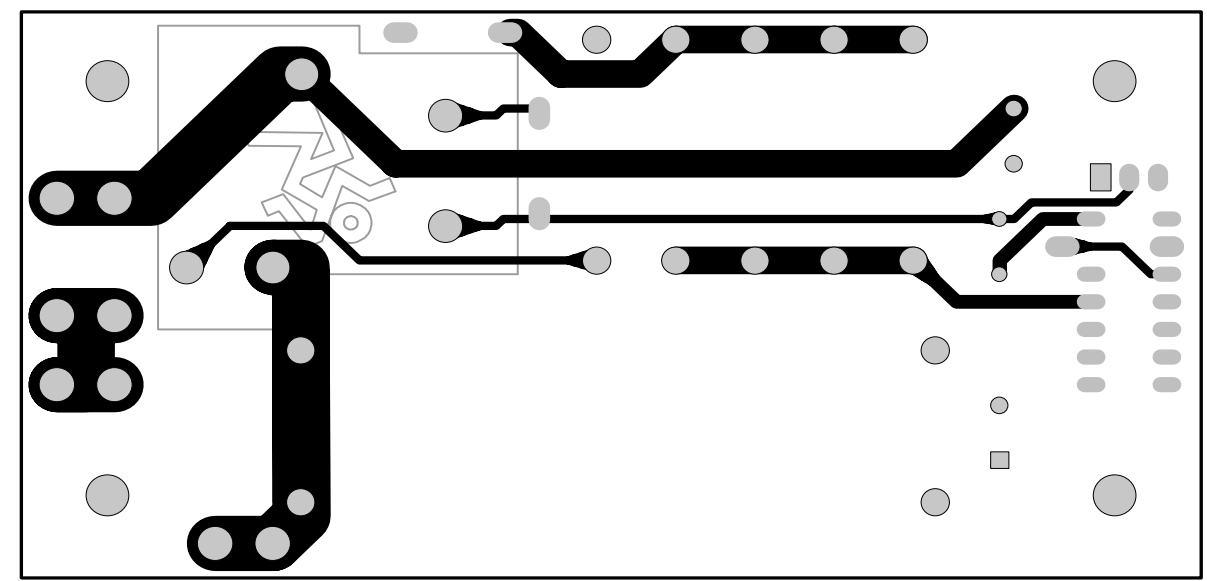
Component side traces and pads



Component side



Solder side



Component side

- NOTE: SCHEMATIC IS SHOWN WITH 240VAC VALUES
- \*\*NO STUFF R2-R4 FOR 100VAC OR 120VAC VERSIONS\*\*  
XXX
  - \*\*REPLACES R10-R11 FOR 120VAC VERSION\*\*  
82 15W
  - \*\*REPLACES R1 FOR 120VAC VERSION\*\*  
330 3W
  - \*\*REPLACES R10-R11 FOR 100VAC VERSION\*\*  
68 15W
  - \*\*REPLACES R1 FOR 100VAC VERSION\*\*  
20 3W
  - PCB, M-1200/M-1400 SOFT START

UNLESS OTHERWISE SPECIFIED DIMENSIONS ARE IN INCHES TOLERANCES ARE: FRACTIONS: DECIMALS: ANGLES: ±NA .XX ±.01 ±MA .XXX ±.005	APPROVALS	DATE	 Mackie Designs Inc. Woodinville, Wa.
	CHECKED: Chuck J	4-15-97	
MATERIAL: SEE NOTES	NP ENG: Cameron Jones	4-25-97	SCHEMATIC, M1400 SOFT START
FINISH: SEE NOTES	MFG:		
DO NOT SCALE DRAWING	MFG ENG:		SIZE: D SCALE: NONE DWG. NO. 990-162-00 REV. A DWG FILE: SHEET 1 OF 1