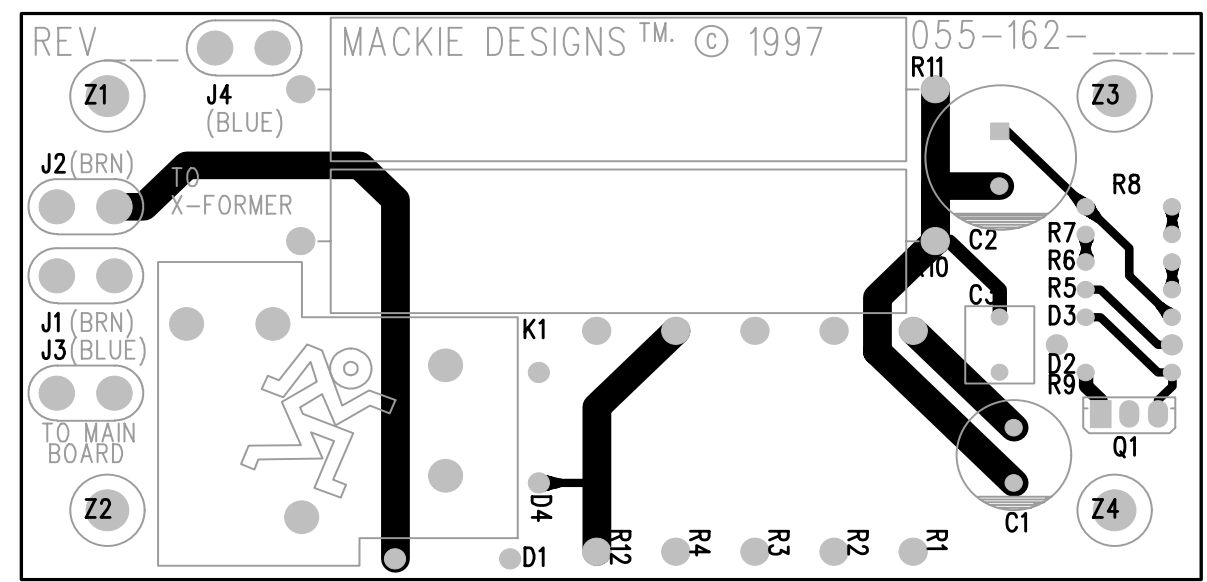
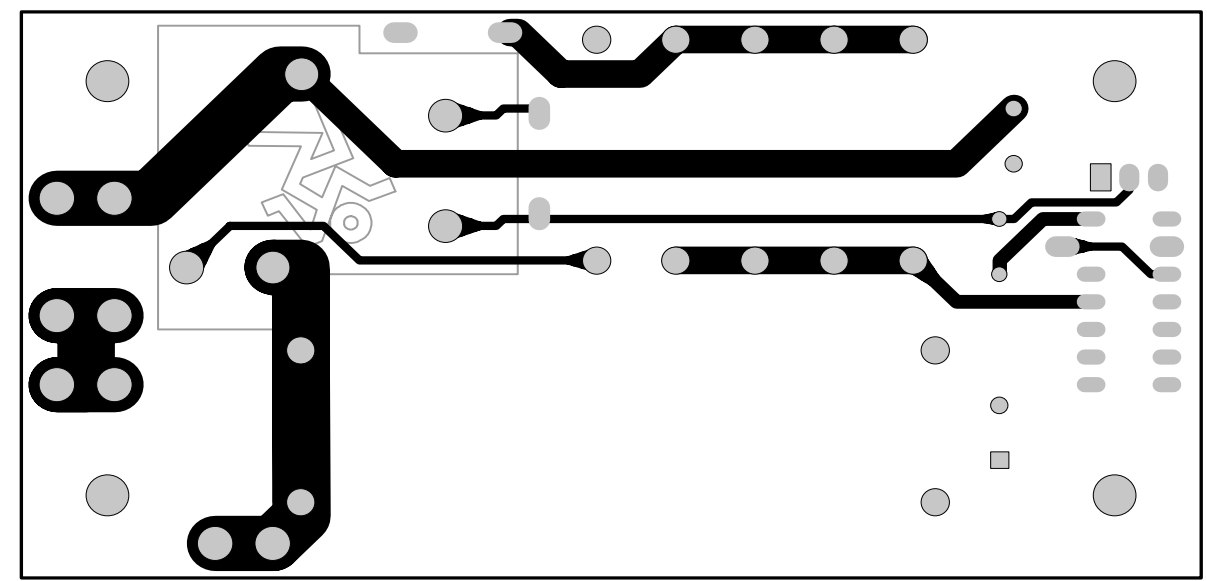


- NOTE: SCHEMATIC IS SHOWN WITH 240VAC VALUES
- **NO STUFF R2-R4 FOR 100VAC OR 120VAC VERSIONS**
XXX
 - **REPLACES R10-R11 FOR 120VAC VERSION**
82 15W
 - **REPLACES R1 FOR 120VAC VERSION**
330 3W
 - **REPLACES R10-R11 FOR 100VAC VERSION**
68 15W
 - **REPLACES R1 FOR 100VAC VERSION**
20 3W
 - PCB, M-1200/M-1400 SOFT START

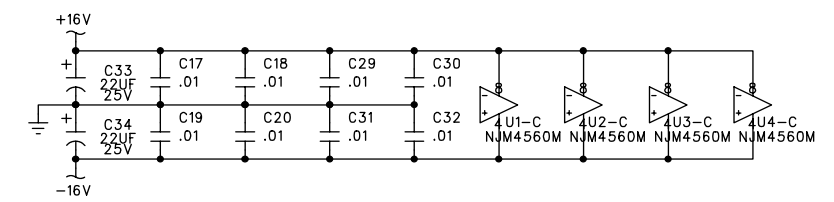
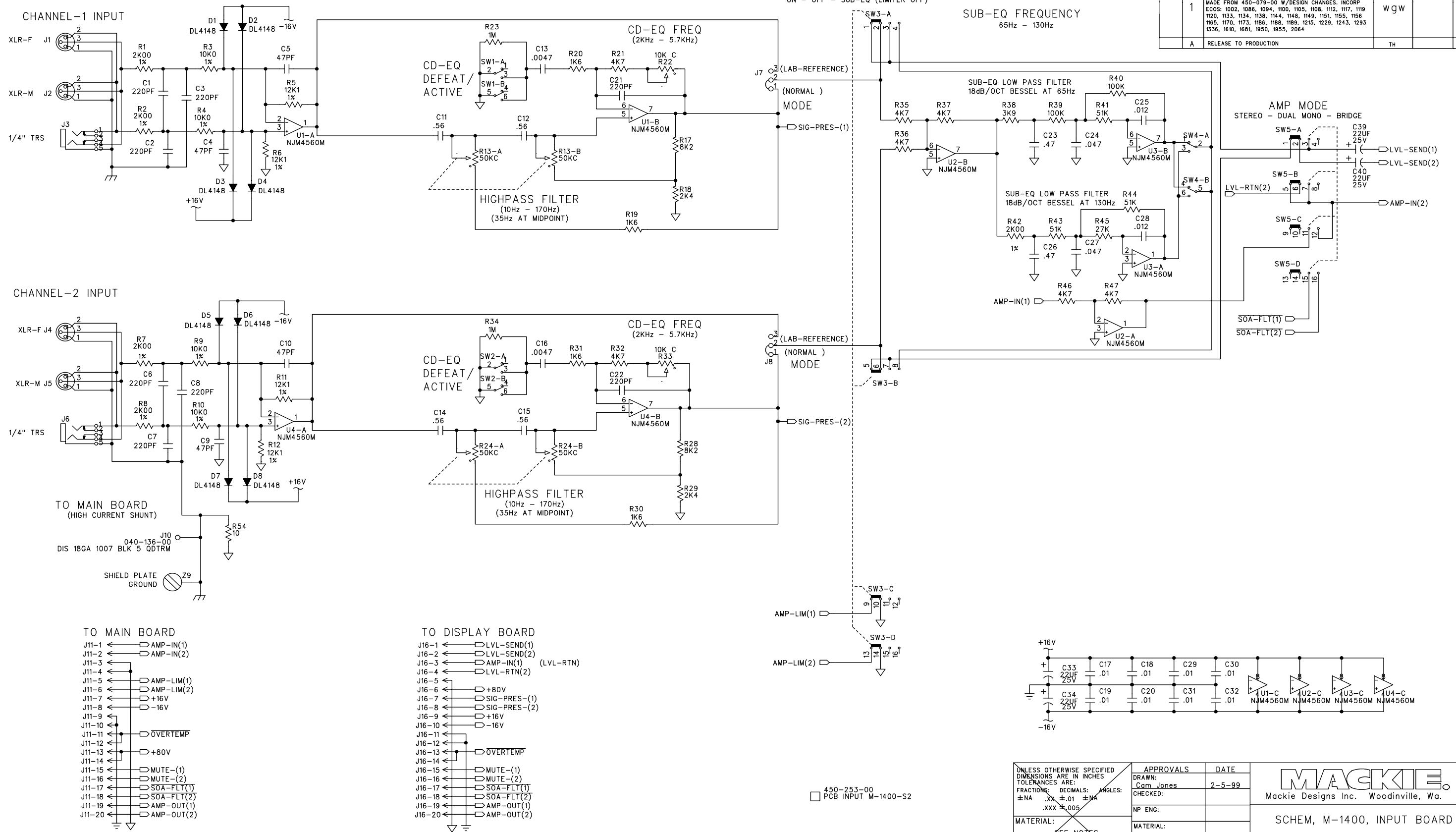
Solder side



Component side

UNLESS OTHERWISE SPECIFIED DIMENSIONS ARE IN INCHES TOLERANCES ARE: FRACTIONS: DECIMALS: ANGLES: ±NA .XX ±.01 ±MA .XXX ±.005	APPROVALS	DATE	 Mackie Designs Inc. Woodinville, Wa.
	CHECKED: Chuck J	4-15-97	
MATERIAL: SEE NOTES	NP ENG:		SCHEMATIC, M1400 SOFT START
	Cameron Jones	4-25-97	
FINISH: SEE NOTES	MFG:		SIZE: D SCALE: NONE DWG. NO. 990-162-00 REV. A DWG FILE: SHEET 1 OF 1
	MFG ENG:		
DO NOT SCALE DRAWING	ISSUED:		

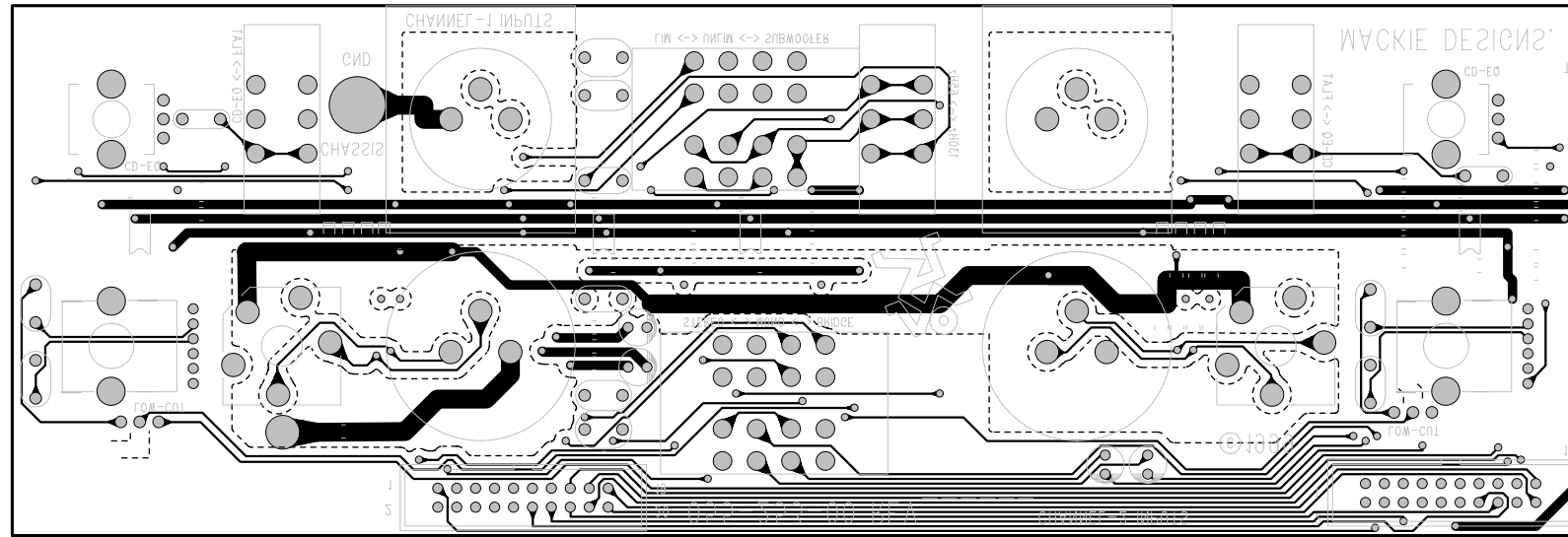
DWG. NO.	990-253-00	SHT	1	REV.	A
ECO#	REV.	DESCRIPTION	REV. BY:	APP. BY:	DATE
1	A	MADE FROM 450-079-00 W/DESIGN CHANGES. INCORP ECOS: 1002, 1086, 1094, 1100, 1105, 1108, 1112, 1117, 1119 1120, 1133, 1134, 1136, 1144, 1148, 1149, 1151, 1155, 1156 1165, 1170, 1173, 1186, 1188, 1189, 1215, 1229, 1243, 1293 1336, 1610, 1681, 1950, 1955, 2064	WJW		2-12-99
		RELEASE TO PRODUCTION	TH		3-26-99



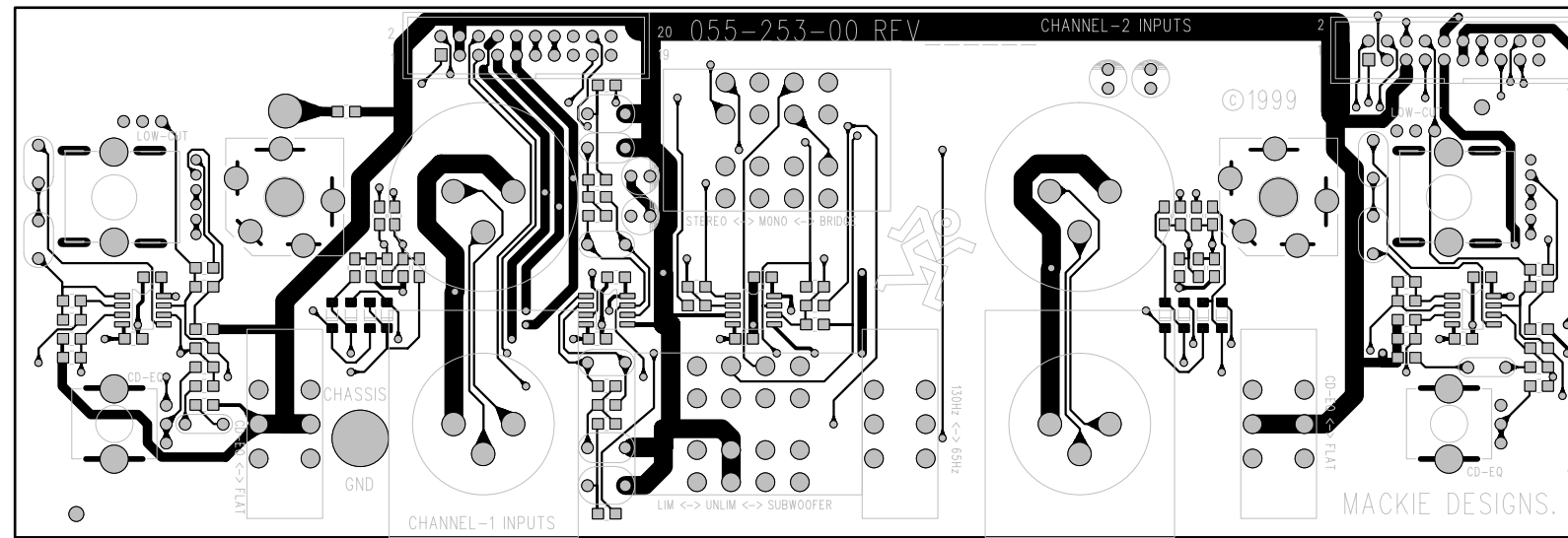
- TO MAIN BOARD**
- J11-1 AMP-IN(1)
 - J11-2 AMP-IN(2)
 - J11-3 AMP-IN(1)
 - J11-4 AMP-LIM(1)
 - J11-5 AMP-LIM(2)
 - J11-6 +16V
 - J11-7 -16V
 - J11-8 OVERTEMP
 - J11-9 +80V
 - J11-10 MUTE-(1)
 - J11-11 MUTE-(2)
 - J11-12 SOA-FLT(1)
 - J11-13 SOA-FLT(2)
 - J11-14 AMP-OUT(1)
 - J11-15 AMP-OUT(2)
- TO DISPLAY BOARD**
- J16-1 LVL-SEND(1)
 - J16-2 LVL-SEND(2)
 - J16-3 AMP-IN(1) (LVL-RTN)
 - J16-4 LVL-RTN(2)
 - J16-5 +80V
 - J16-6 SIG-PRES-(1)
 - J16-7 SIG-PRES-(2)
 - J16-8 +16V
 - J16-9 -16V
 - J16-10 OVERTEMP
 - J16-11 MUTE-(1)
 - J16-12 MUTE-(2)
 - J16-13 SOA-FLT(1)
 - J16-14 SOA-FLT(2)
 - J16-15 AMP-OUT(1)
 - J16-16 AMP-OUT(2)

450-253-00
PCB INPUT M-1400-S2

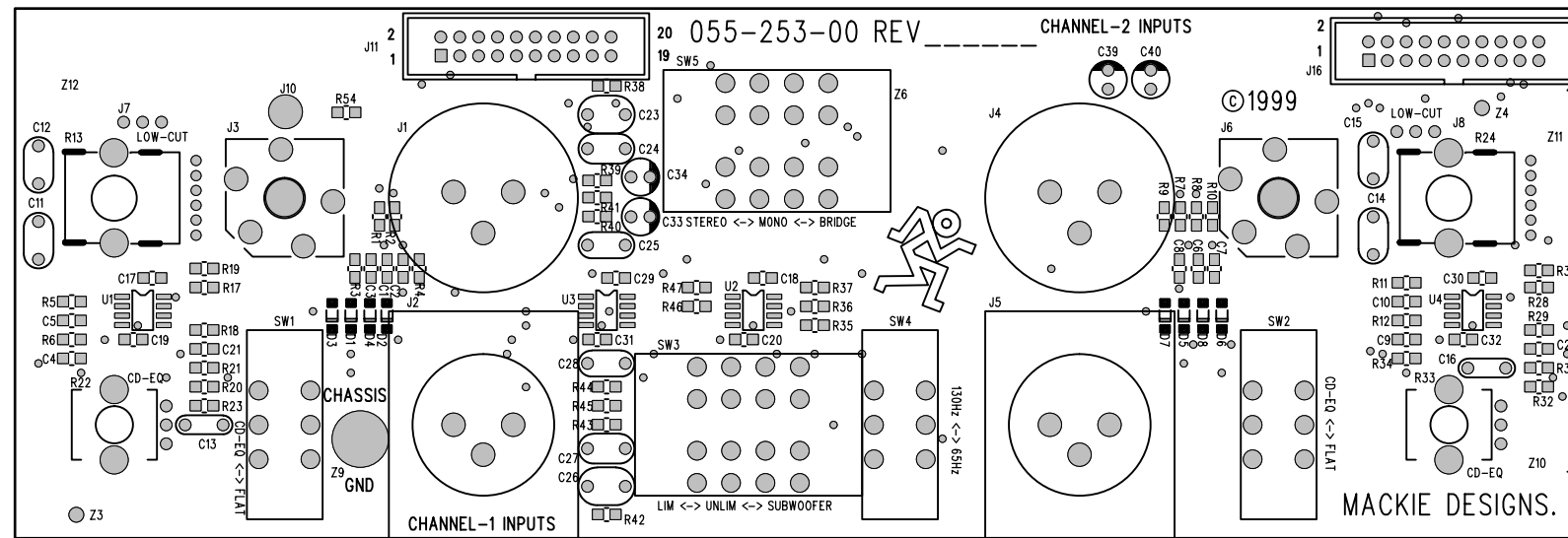
UNLESS OTHERWISE SPECIFIED DIMENSIONS ARE IN INCHES TOLERANCES ARE: FRACTIONS: DECIMALS: ANGLES: ±NA .XX ±.01 ±MA .XXX ±.005	APPROVALS	DATE	MACKIE Mackie Designs Inc. Woodinville, Wa.
	DRAWN: Cam Jones	2-5-99	
MATERIAL: SEE NOTES	MATERIAL:		SCHEM, M-1400, INPUT BOARD
FINISH: SEE NOTES	MFG:		
DO NOT SCALE DRAWING	ISSUED:		SIZE SCALE: DWG. NO. 990-253-00 REV. A
			DWG FILE: SHEET 1 OF 1



Solder side traces and pads



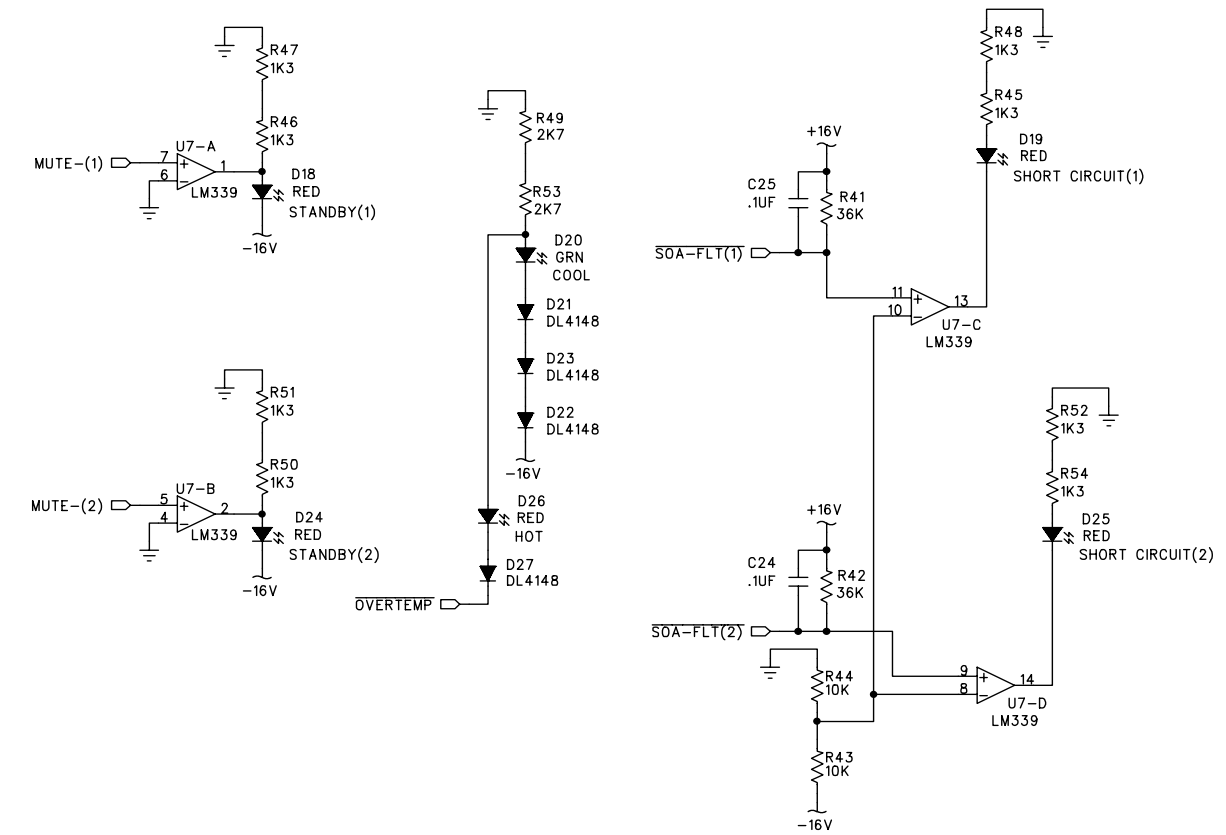
Component side traces and pads



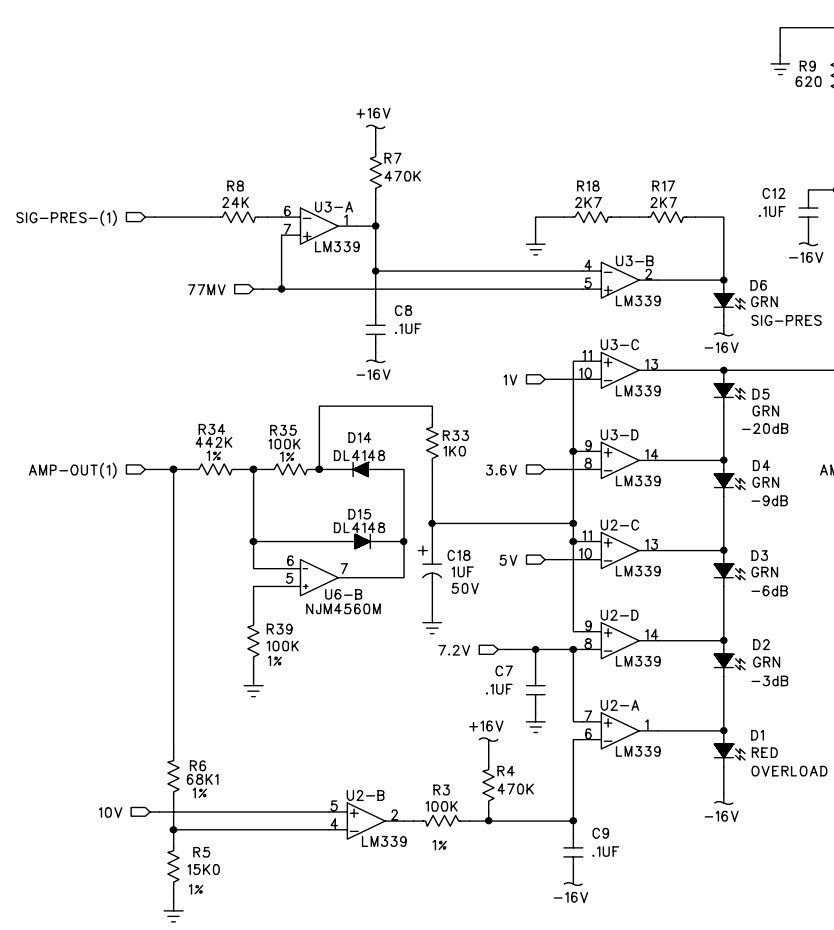
Component side

DWG. NO.	990-254-00	SHT	1	REV.	A	1
ECO#	REV.	DESCRIPTION	REV. BY:	APP. BY:	DATE	
1		MADE FROM 990-080 W/DESIGN CHANGES. INCORP ECOS: 1116, 1118, 1121, 1137, 1327, 1359 AND 2100.	TH		2-10-99	
A		RELEASE TO PRODUCTION	TH		3-26-99	

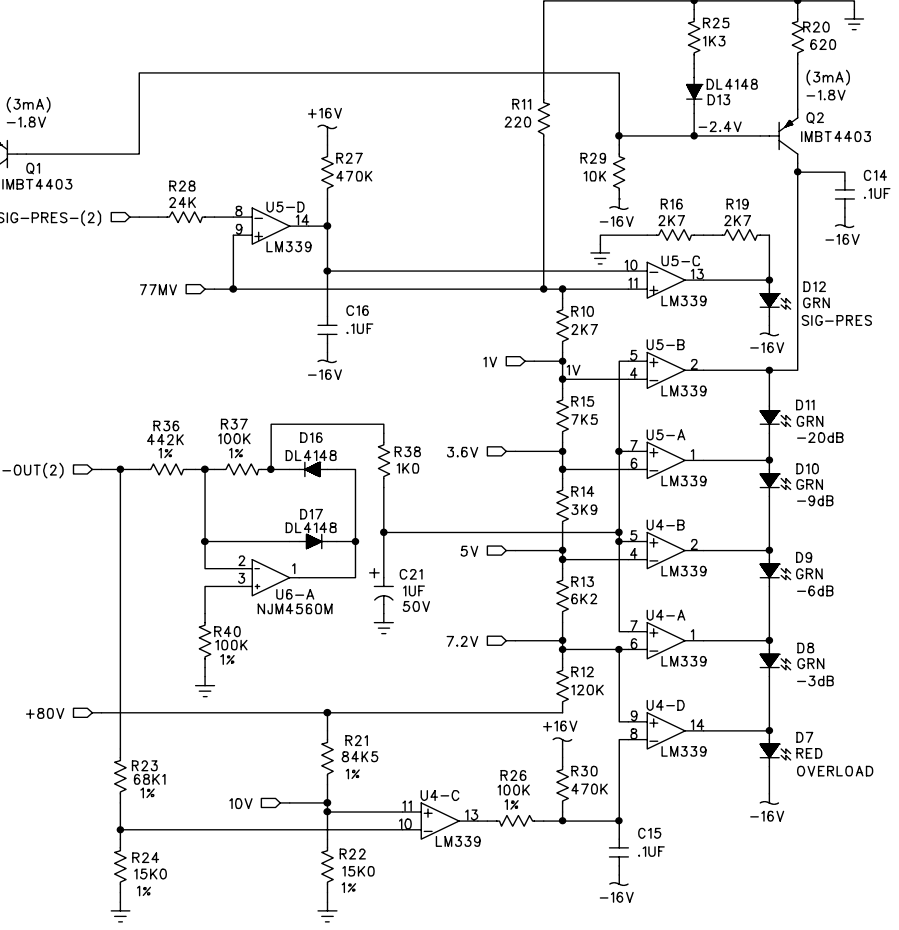
AMPLIFIER STATUS INDICATORS



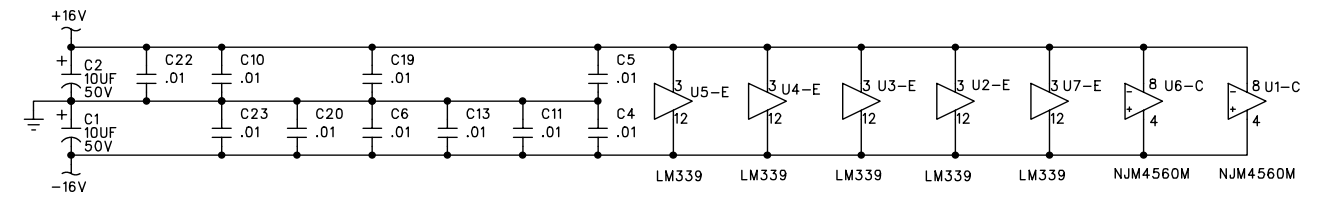
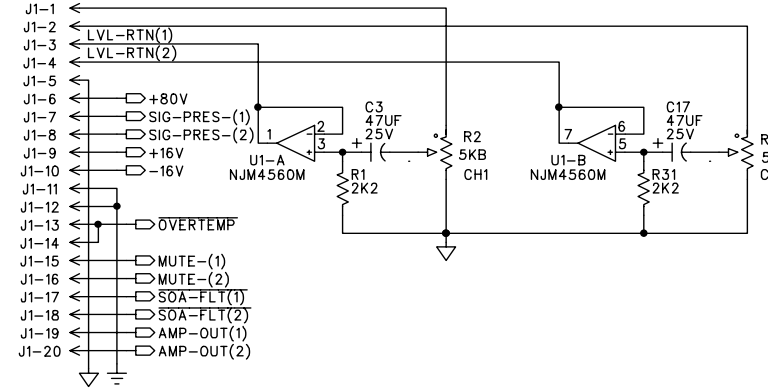
CH1 METER



CH2 METER



TO INPUT BOARD OUTPUT LEVEL



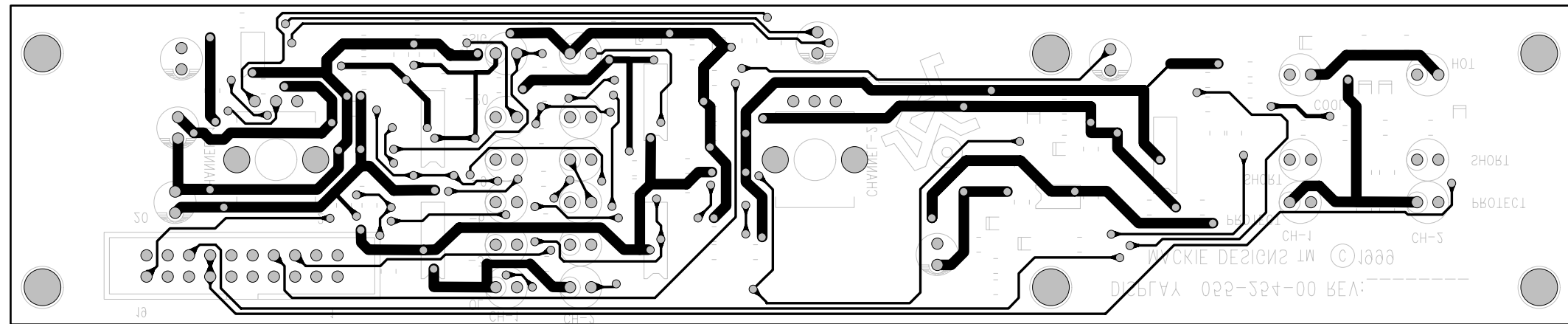
UNLESS OTHERWISE SPECIFIED DIMENSIONS ARE IN INCHES TOLERANCES ARE: FRACTIONS: DECIMALS: ANGLES: ±NA .XX ±.01 ±MA .XXX ±.005	APPROVALS	DATE
	DRAWN: trh	2-9-99
MATERIAL: SEE NOTES	CHECKED:	
	NP ENG:	
FINISH: SEE NOTES	MATERIAL:	
	MFG:	
DO NOT SCALE DRAWING	MFG ENG:	
	ISSUED:	



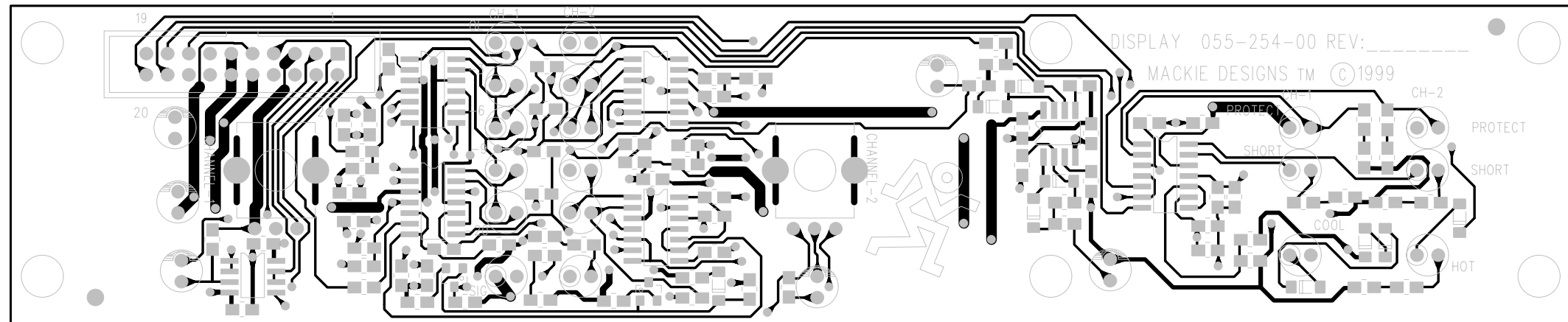
SCHEMATIC, DISPLAY, M1400 S2

SIZE	SCALE:	DWG. NO.	REV.
D	NONE	990-254-00	A
DWG FILE:		SHEET 1 OF 1	

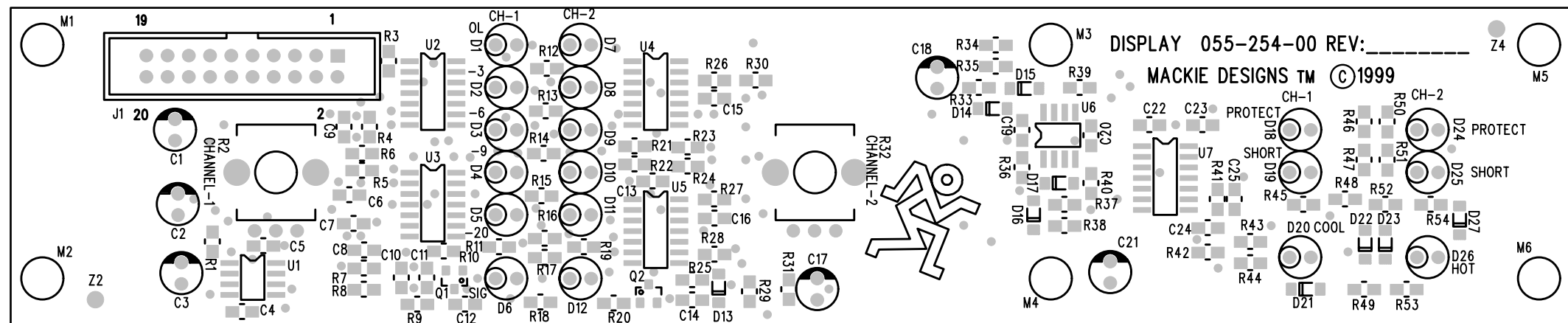
- 706-033-08 STDF SWAGE NO.4 X .665
- 450-254-00 PCB, DISPLAY, M1400 S2



Solder side traces and pads

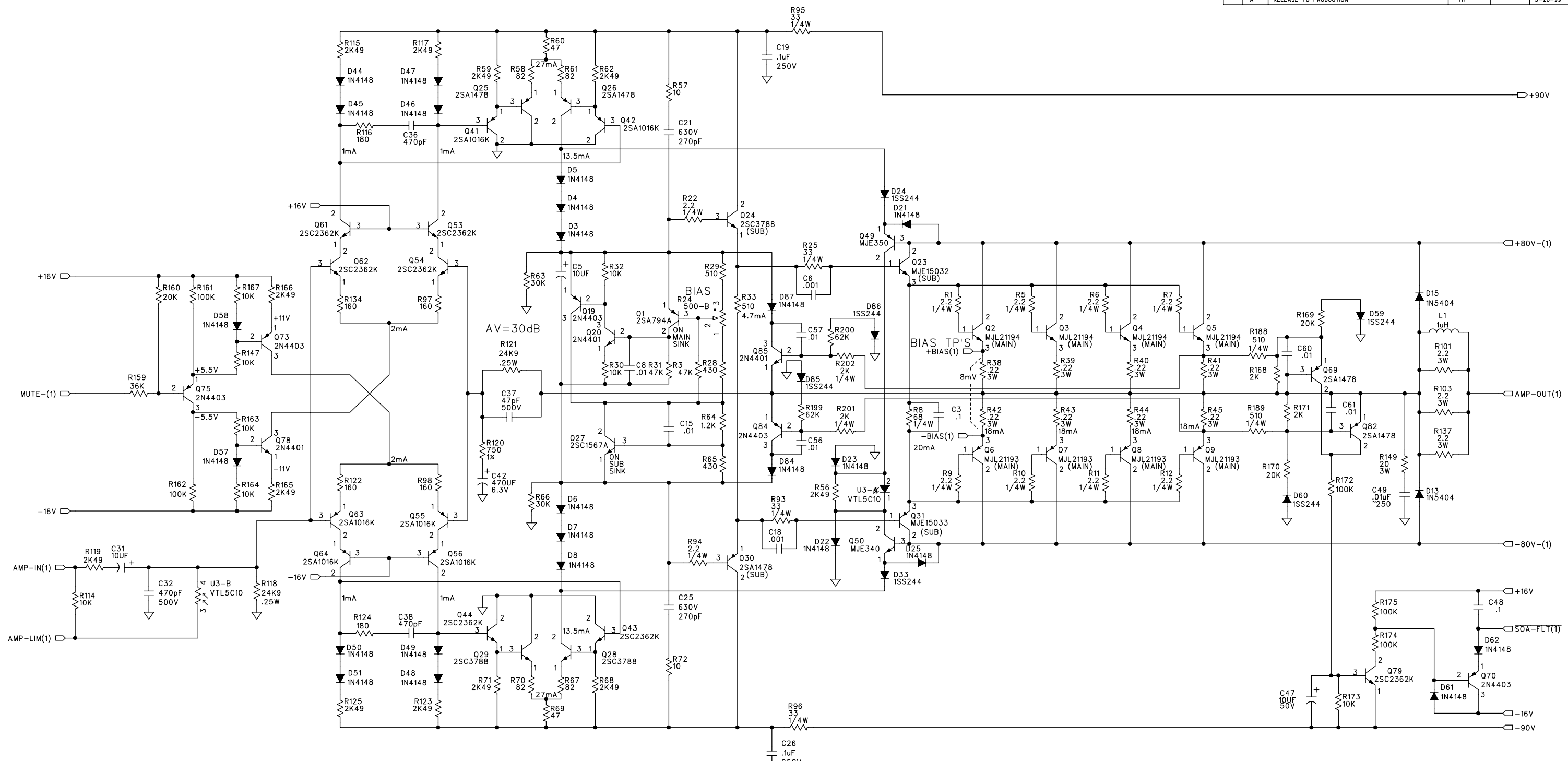


Component side traces and pads



Component side

DWG. NO.	990-255-00	SHT	1	REV:	A	1	
REV:	ECO#	DESCRIPTION			REV. BY:	APP. BY:	DATE
1		MADE FROM 990-081-00 W/ DESIGNS CHANGES. INCORP ECOS: 1092,1098, 1142, 1170, 1203, 104, 1359, 1400, 1433 218, 2134			WGW		2-12-99
A		RELEASE TO PRODUCTION			TH		3-28-99

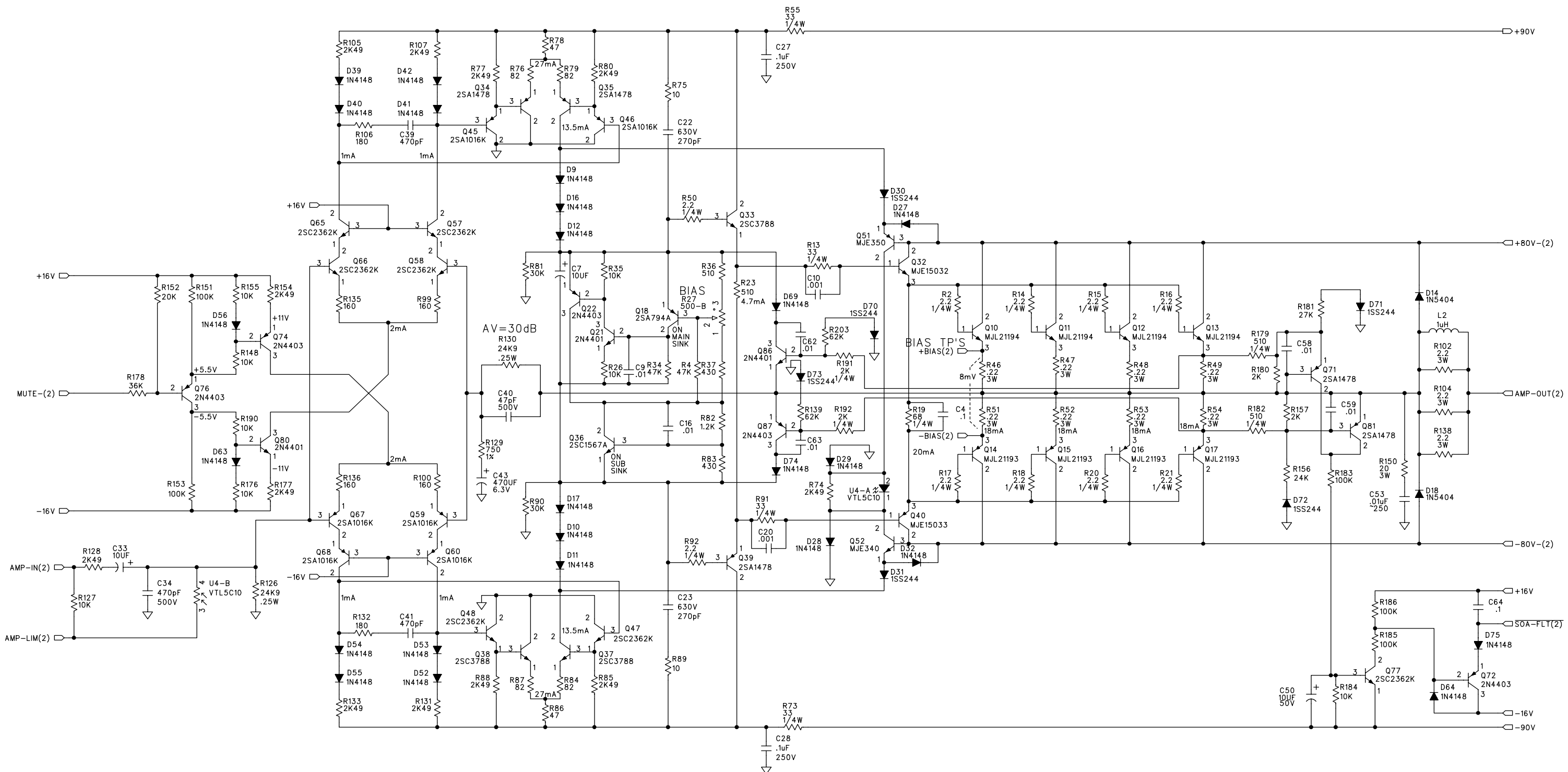


- 450-255-00 PCB, MAIN M-1400-S2
- 400-080-00 FUSE CLIP PC MT 5mm DIA
- 400-129-00 FUSE CLIP PC MT .25" DIA

UNLESS OTHERWISE SPECIFIED DIMENSIONS ARE IN INCHES TOLERANCES ARE: FRACTIONS: DECIMALS: ANGLES: ±NA .XX ±.01 ±NA .XXX ±.005	APPROVALS	DATE
	DRAWN: Cam Jones	1-22-99
	CHECKED:	
	NP ENG:	
MATERIAL:	MATERIAL:	
FINISH:	MFG:	
DO NOT SCALE DRAWING	MFG ENG:	
	ISSUED:	

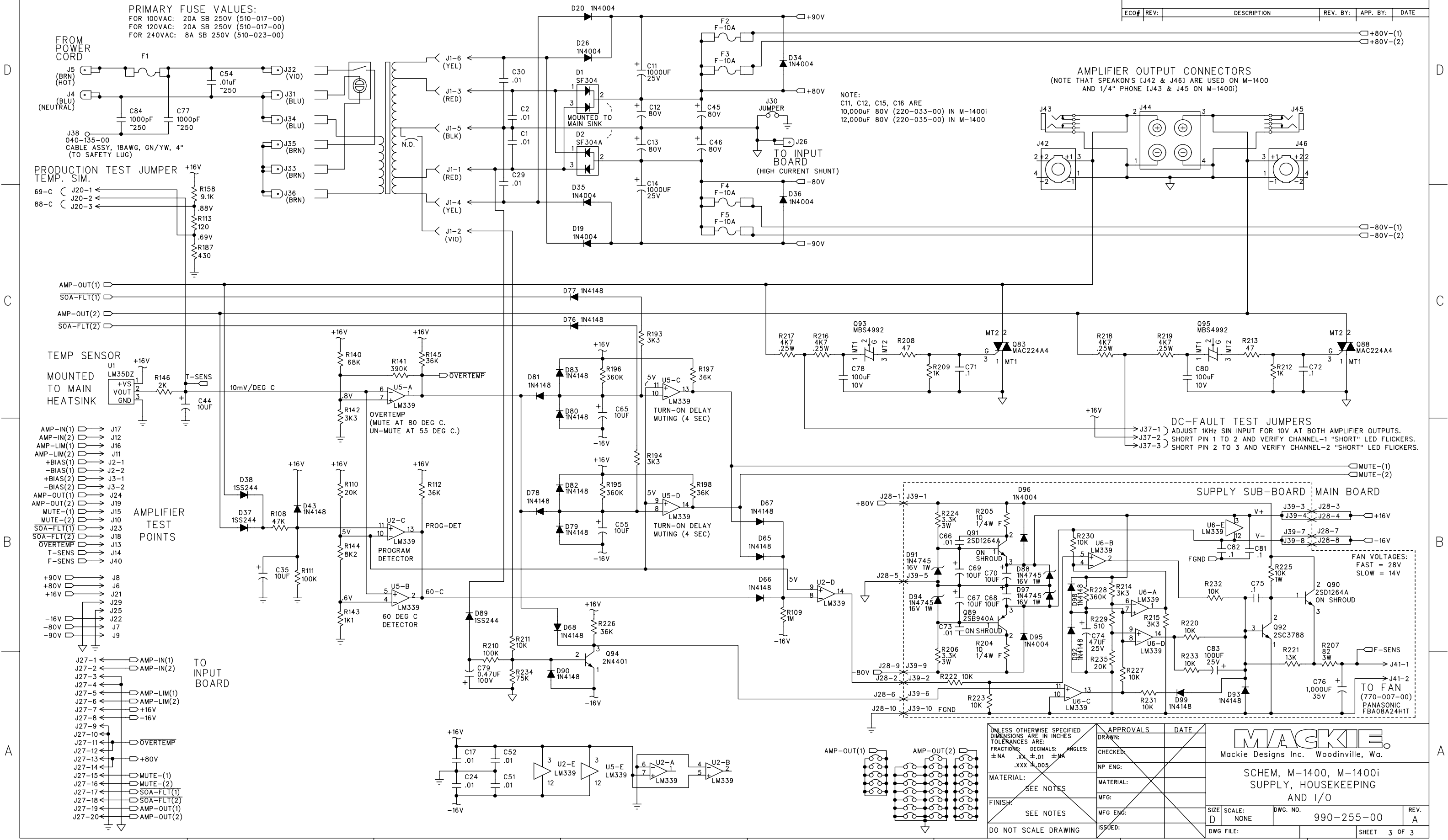
MACKIE Mackie Designs Inc. Woodinville, Wa.	
SCHEM, M-1400, M-1400i CH-1 MAIN AMP	
SIZE D	SCALE NONE
DWG. NO. 990-255-00	REV. A
DWG FILE:	SHEET 1 OF 3

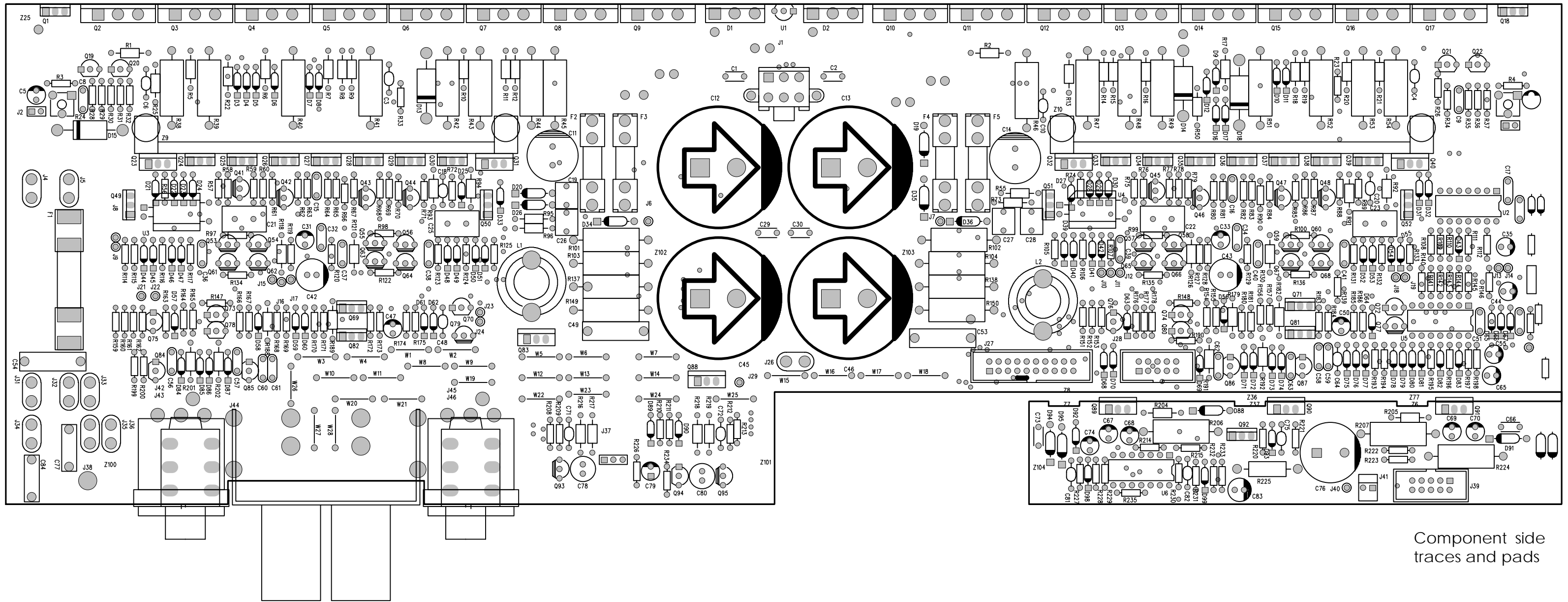
D
C
B
A



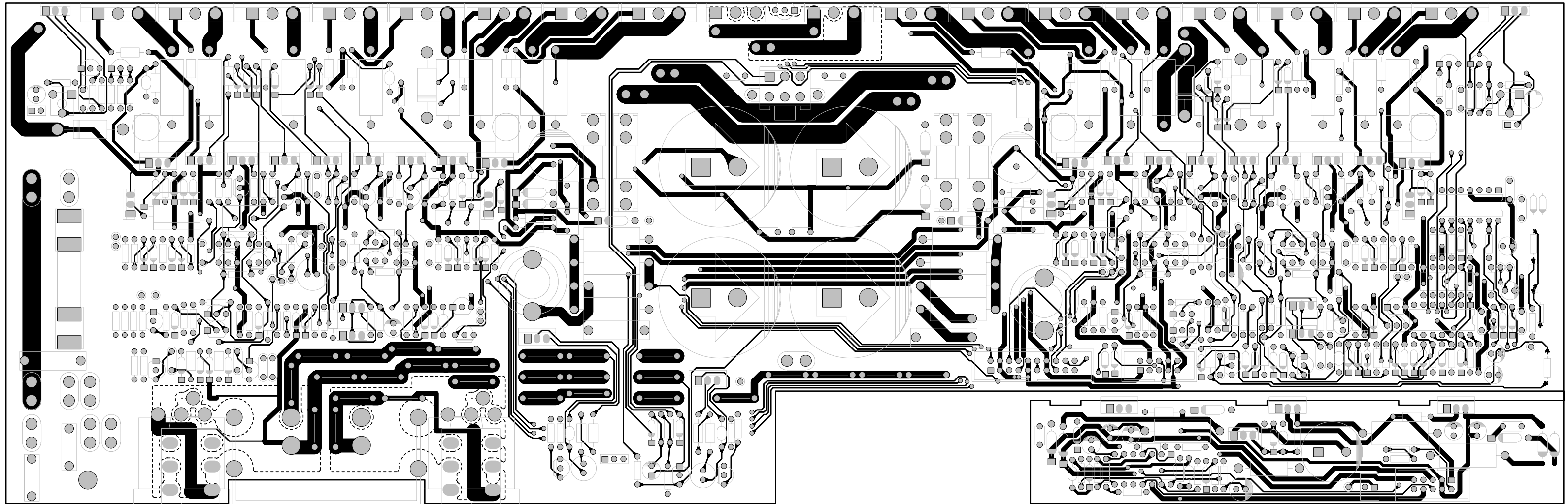
UNLESS OTHERWISE SPECIFIED DIMENSIONS ARE IN INCHES TOLERANCES ARE: FRACTIONS: DECIMALS: ANGLES: ±NA .XX ±.01 ±NA .XXX ±.005	APPROVALS	DATE	
	DRAWN:		
	CHECKED:		
	NP ENG:		
MATERIAL:	MATERIAL:		SCHEM, M-1400, M-1400i CH-2 MAIN AMP
SEE NOTES	MFG:		
FINISH:	MFG ENG:		
SEE NOTES	ISSUED:		
DO NOT SCALE DRAWING			SIZE: D SCALE: NONE DWG. NO. 990-255-00 REV. A SHEET 2 OF 3

ECO#	REV.	DESCRIPTION	REV. BY:	APP. BY:	DATE
------	------	-------------	----------	----------	------

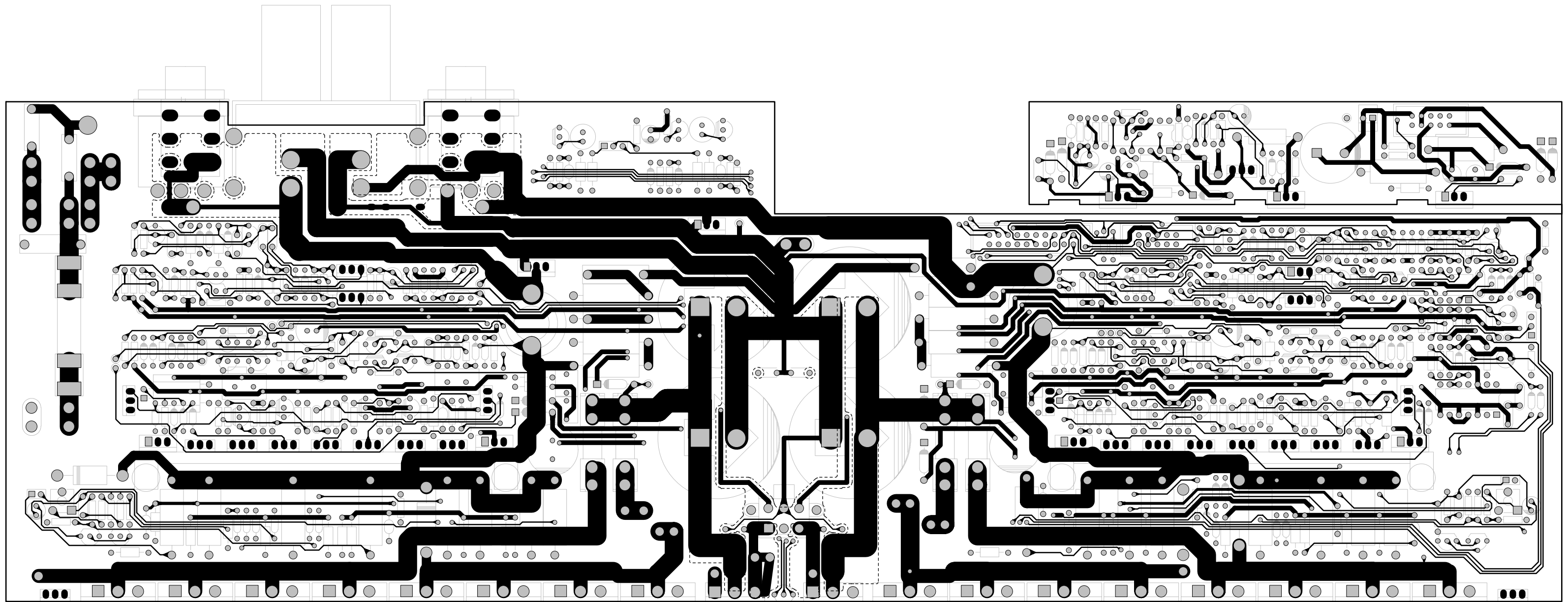




Component side traces and pads



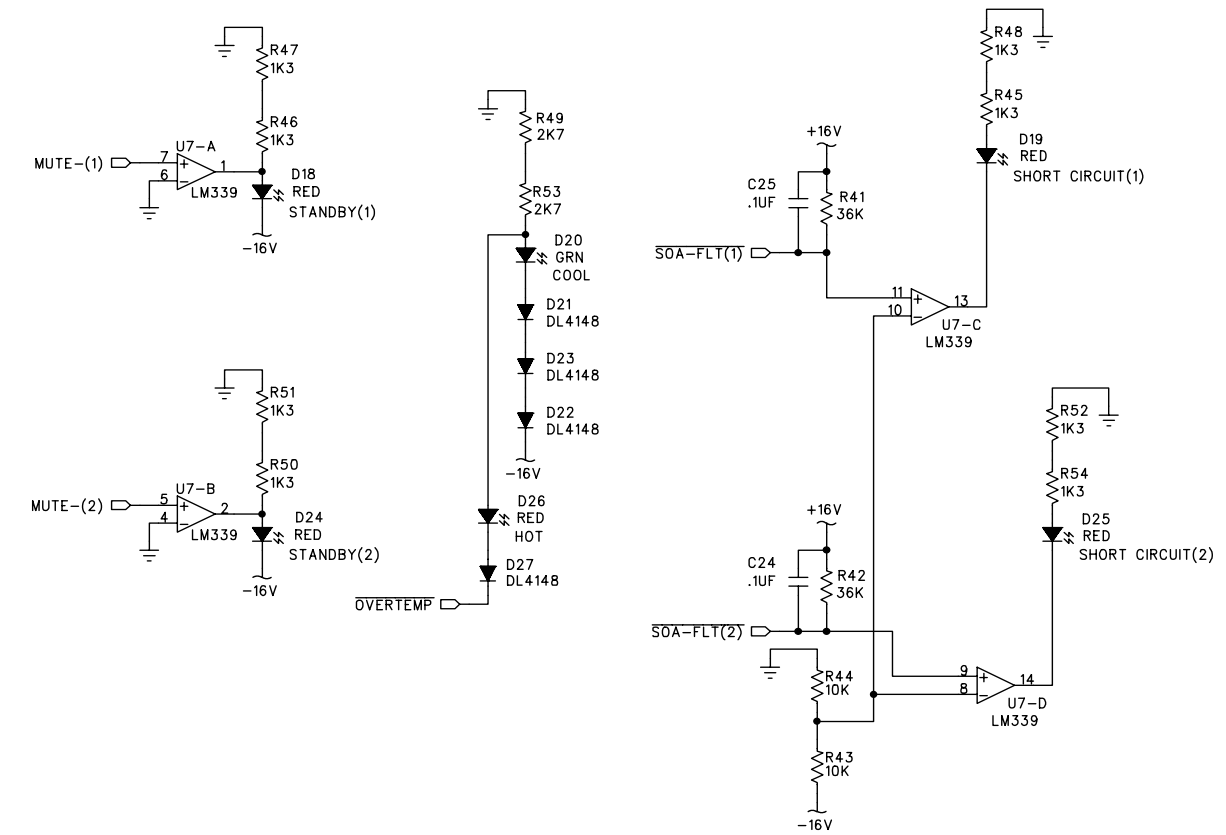
Component side
traces and pads



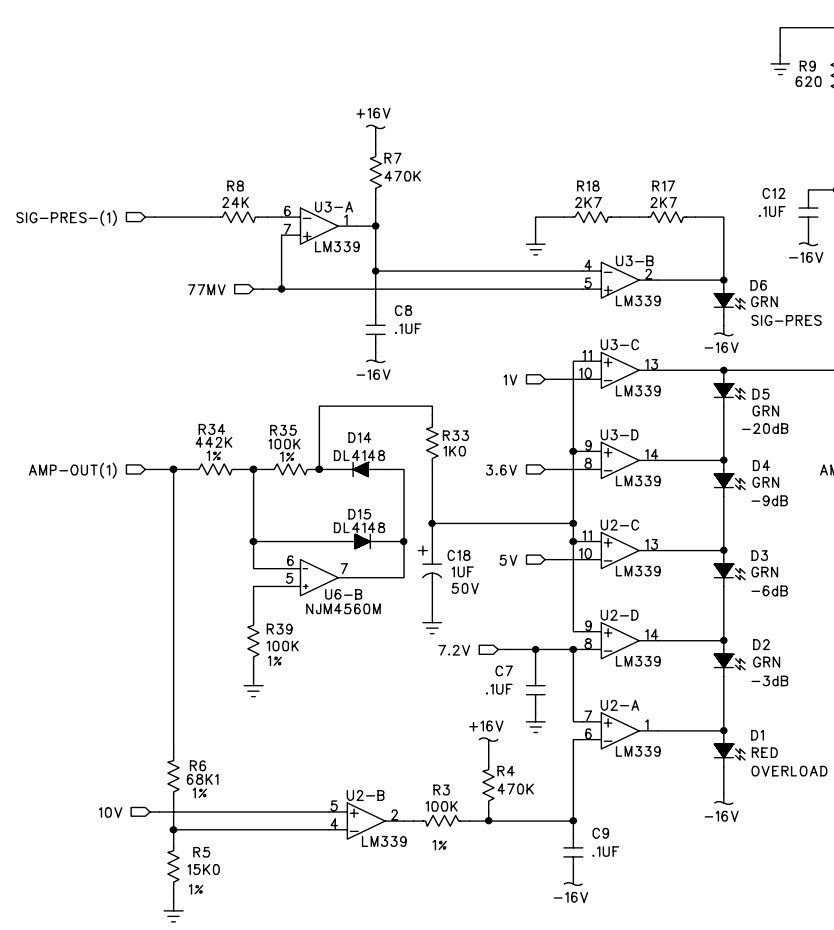
Solder side
traces and pads

DWG. NO.	990-254-00	SHT	1	REV.	A	1
ECO#	REV.	DESCRIPTION	REV. BY:	APP. BY:	DATE	
1		MADE FROM 990-080 W/DESIGN CHANGES. INCORP ECOS: 1116, 1118, 1121, 1137, 1327, 1359 AND 2100.	TH		2-10-99	
A		RELEASE TO PRODUCTION	TH		3-26-99	

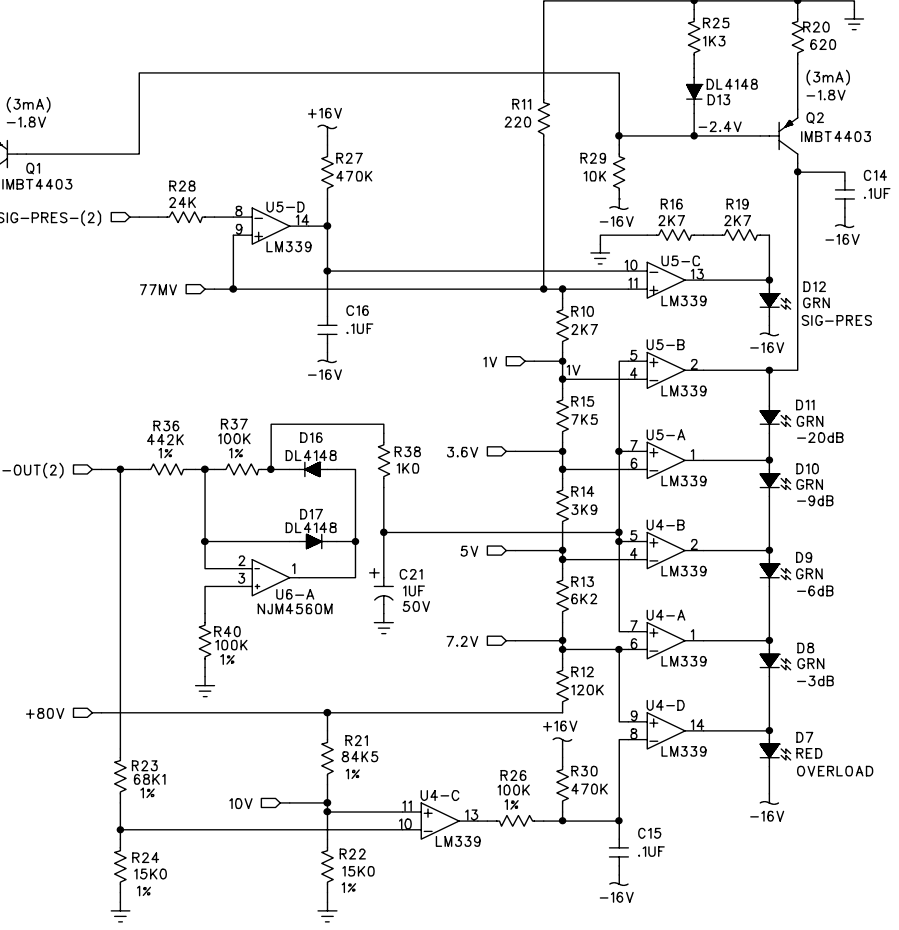
AMPLIFIER STATUS INDICATORS



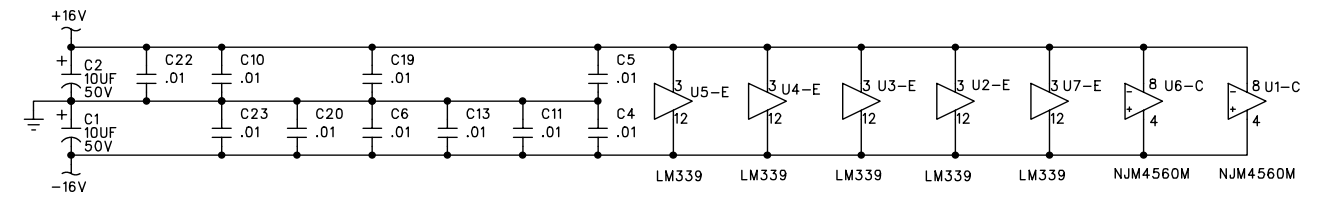
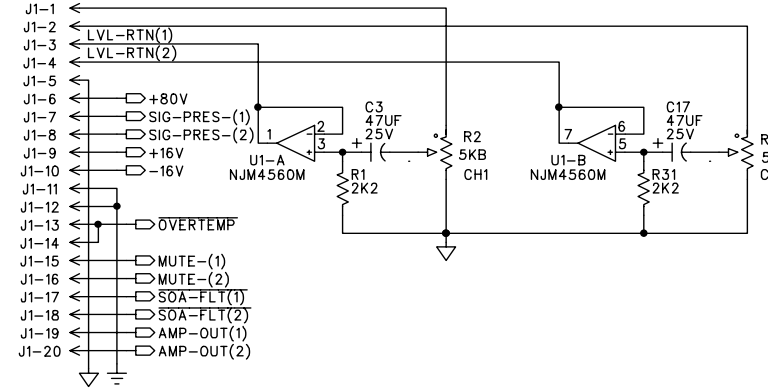
CH1 METER



CH2 METER



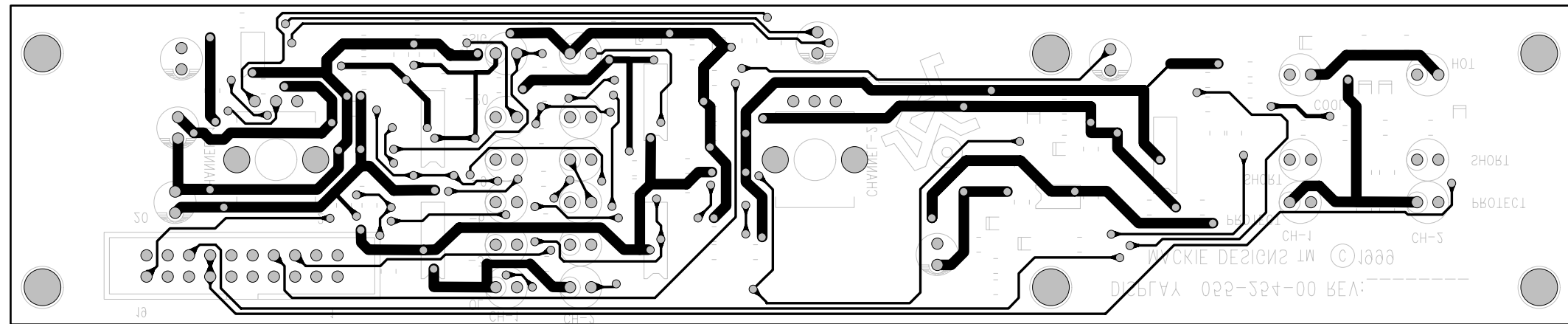
TO INPUT BOARD OUTPUT LEVEL



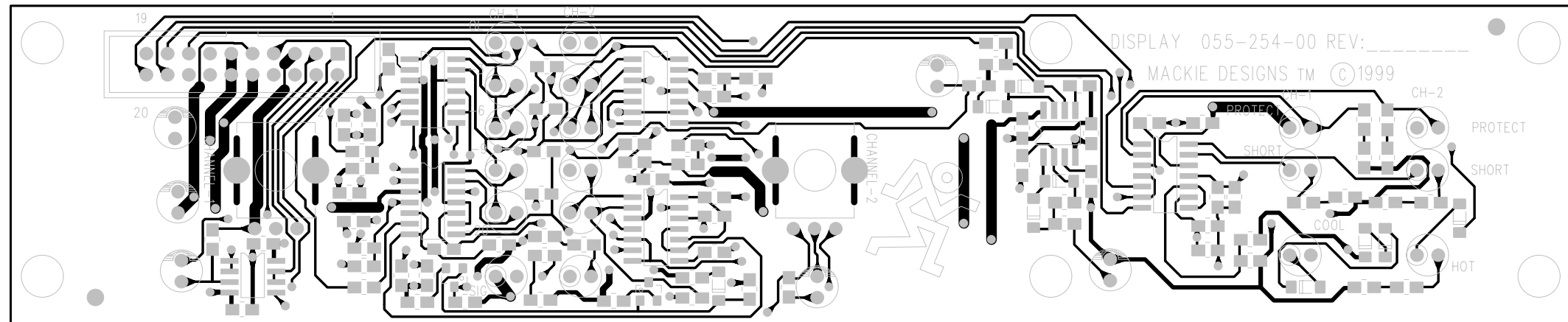
UNLESS OTHERWISE SPECIFIED DIMENSIONS ARE IN INCHES. TOLERANCES ARE: FRACTIONS: DECIMALS: ANGLES: ±NA .XX ±.01 ±MA .XXX ±.005	APPROVALS	DATE
	DRAWN: trh	2-9-99
MATERIAL:	CHECKED:	NP ENG:
SEE NOTES	MATERIAL:	
FINISH:	MFG:	
SEE NOTES	MFG ENG:	
DO NOT SCALE DRAWING	ISSUED:	

MACKIE Mackie Designs Inc. Woodinville, Wa.	
SCHEMATIC, DISPLAY, M1400 S2	
SIZE: D	SCALE: NONE
DWG. NO. 990-254-00	REV. A
DWG. FILE:	SHEET 1 OF 1

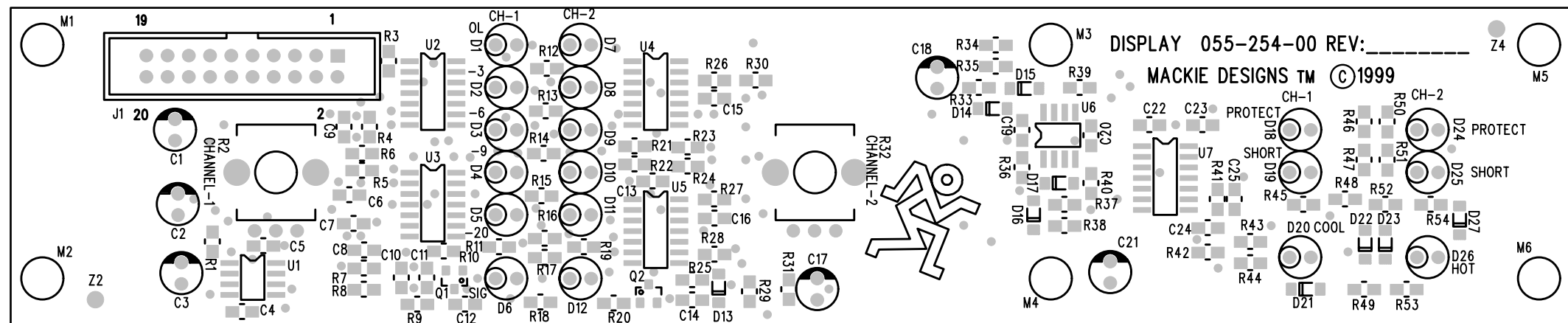
- 706-033-08 STDF SWAGE NO.4 X .665
- 450-254-00 PCB, DISPLAY, M1400 S2



Solder side traces and pads

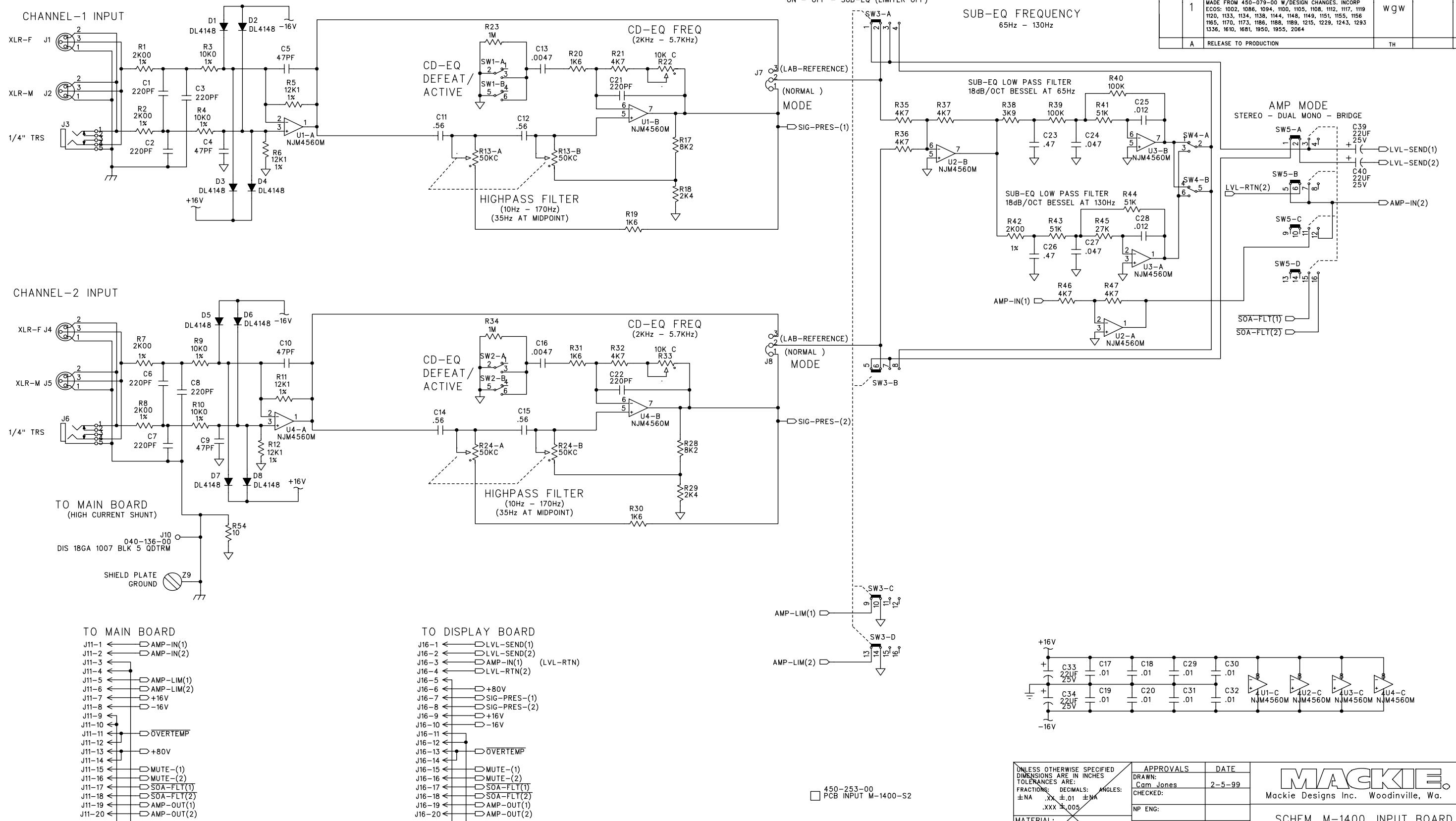


Component side traces and pads



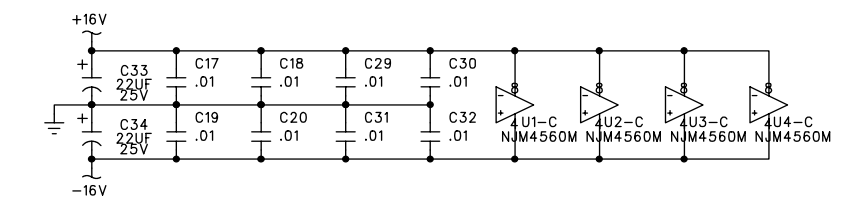
Component side

DWG. NO.	990-253-00	SHT	1	REV.	A
ECO#	REV.	DESCRIPTION	REV. BY:	APP. BY:	DATE
1	A	MADE FROM 450-079-00 W/DESIGN CHANGES. INCORP ECOS: 1002, 1086, 1094, 1100, 1105, 1108, 1112, 1117, 1119 1120, 1133, 1134, 1136, 1144, 1148, 1149, 1151, 1155, 1156 1165, 1170, 1173, 1186, 1188, 1189, 1215, 1229, 1243, 1293 1336, 1610, 1681, 1950, 1955, 2064	WJW		2-12-99
		RELEASE TO PRODUCTION	TH		3-26-99

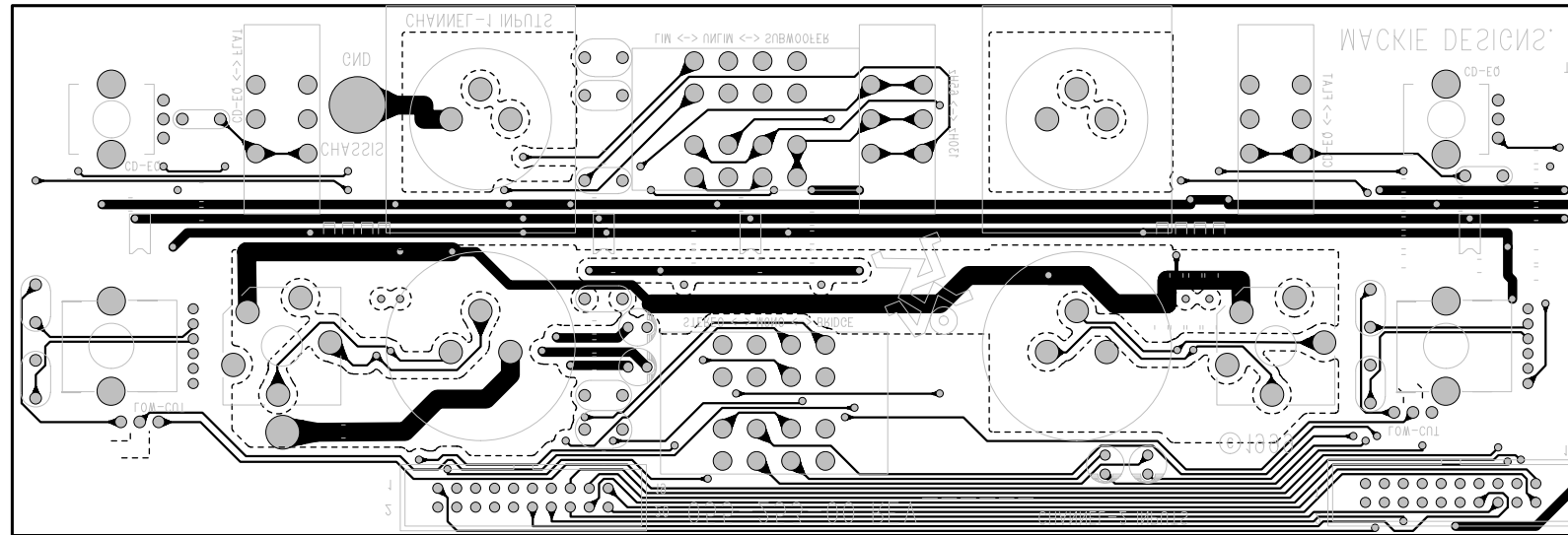


- TO MAIN BOARD
- J11-1 AMP-IN(1)
 - J11-2 AMP-IN(2)
 - J11-3
 - J11-4
 - J11-5 AMP-LIM(1)
 - J11-6 AMP-LIM(2)
 - J11-7 +16V
 - J11-8 -16V
 - J11-9
 - J11-10
 - J11-11 OVERTEMP
 - J11-12
 - J11-13 +80V
 - J11-14
 - J11-15 MUTE-(1)
 - J11-16 MUTE-(2)
 - J11-17 SOA-FLT(1)
 - J11-18 SOA-FLT(2)
 - J11-19 AMP-OUT(1)
 - J11-20 AMP-OUT(2)

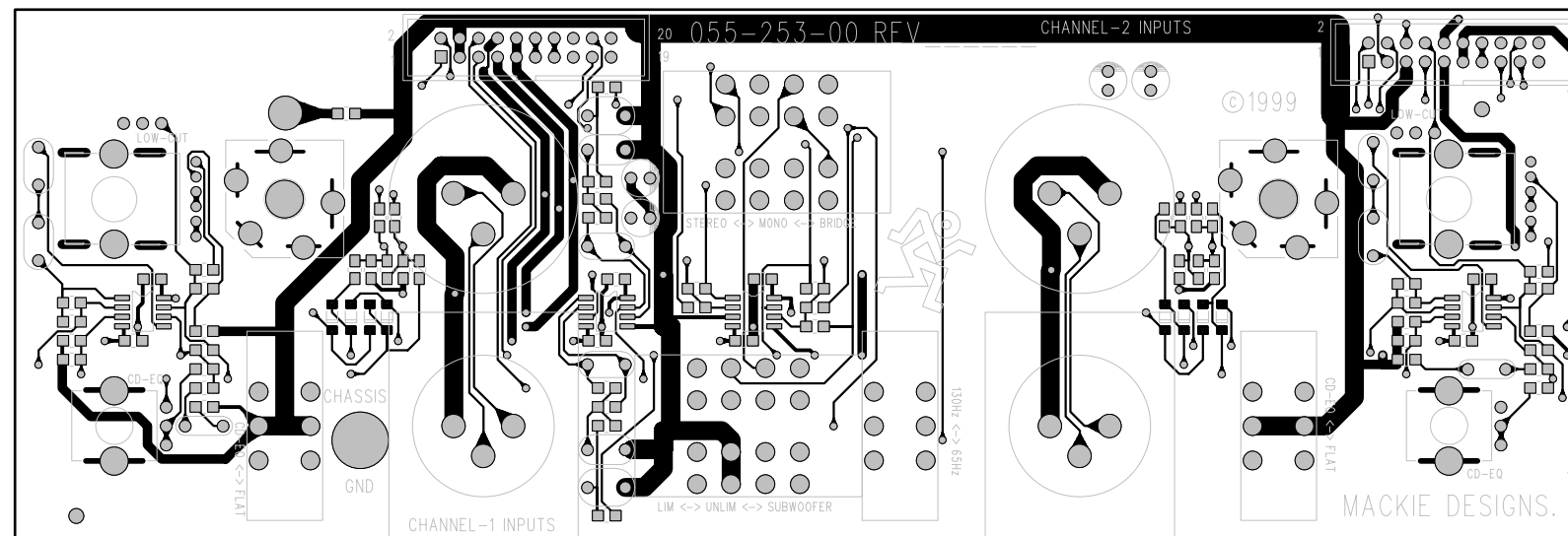
- TO DISPLAY BOARD
- J16-1 LVL-SEND(1)
 - J16-2 LVL-SEND(2)
 - J16-3 AMP-IN(1)
 - J16-4 LVL-RTN(2)
 - J16-5
 - J16-6 +80V
 - J16-7 SIG-PRES-(1)
 - J16-8 SIG-PRES-(2)
 - J16-9 +16V
 - J16-10 -16V
 - J16-11
 - J16-12
 - J16-13 OVERTEMP
 - J16-14
 - J16-15 MUTE-(1)
 - J16-16 MUTE-(2)
 - J16-17 SOA-FLT(1)
 - J16-18 SOA-FLT(2)
 - J16-19 AMP-OUT(1)
 - J16-20 AMP-OUT(2)



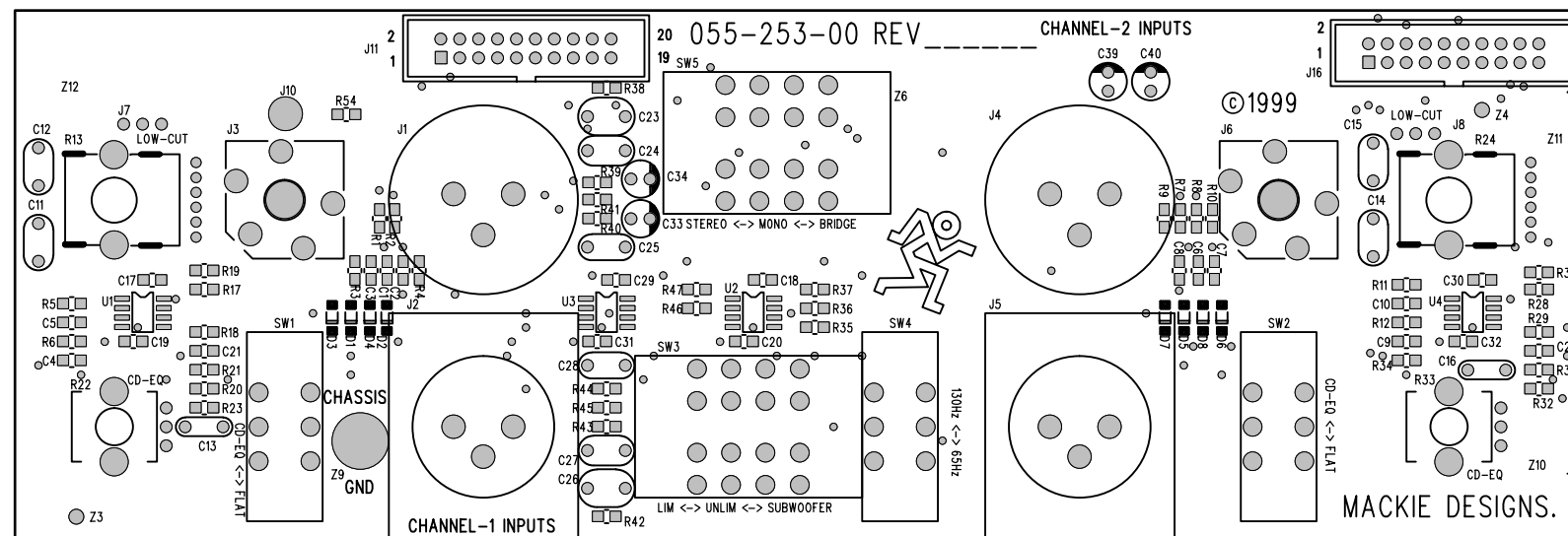
UNLESS OTHERWISE SPECIFIED DIMENSIONS ARE IN INCHES TOLERANCES ARE: FRACTIONS: DECIMALS: ANGLES: ±NA .XX ±.01 ±MA .XXX ±.005	APPROVALS	DATE	MACKIE Mackie Designs Inc. Woodinville, Wa.
	DRAWN: Cam Jones	2-5-99	
MATERIAL: SEE NOTES	MATERIAL:		SCHEM, M-1400, INPUT BOARD
FINISH: SEE NOTES	MFG:		
DO NOT SCALE DRAWING	ISSUED:		SIZE: D SCALE: NONE DWG. NO. 990-253-00 SHEET 1 OF 1



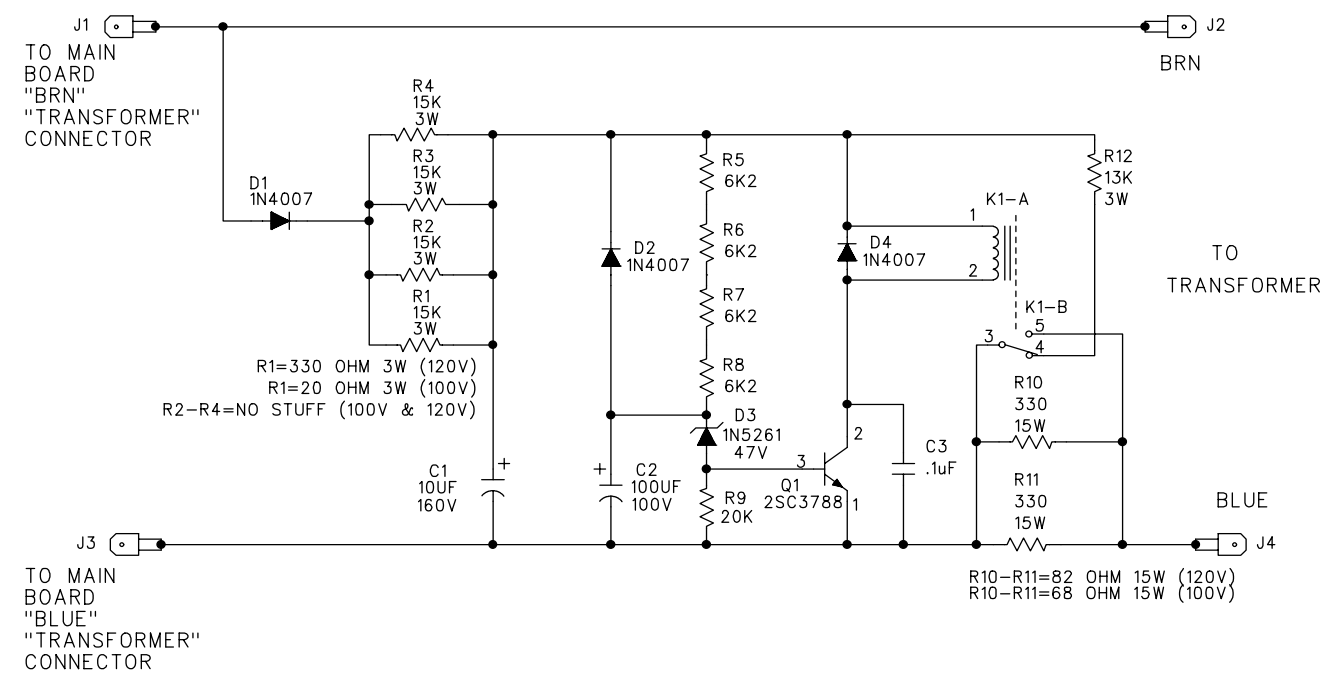
Solder side traces and pads



Component side traces and pads

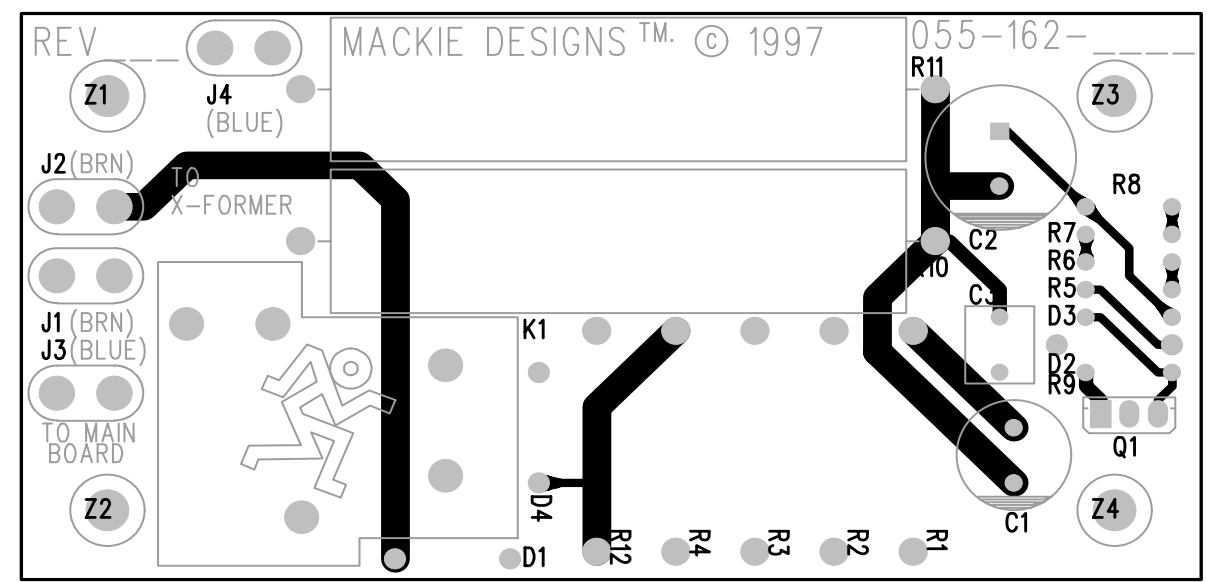
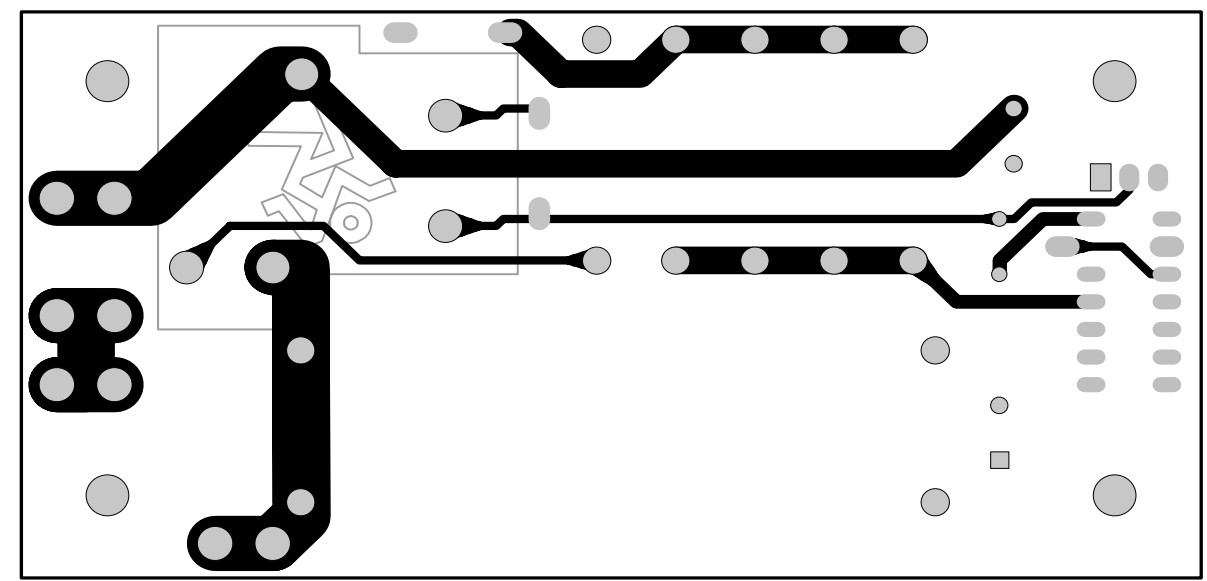


Component side



- NOTE: SCHEMATIC IS SHOWN WITH 240VAC VALUES
- **NO STUFF R2-R4 FOR 100VAC OR 120VAC VERSIONS**
XXX
 - **REPLACES R10-R11 FOR 120VAC VERSION**
82 15W
 - **REPLACES R1 FOR 120VAC VERSION**
330 3W
 - **REPLACES R10-R11 FOR 100VAC VERSION**
68 15W
 - **REPLACES R1 FOR 100VAC VERSION**
20 3W
 - PCB, M-1200/M-1400 SOFT START

Solder side



Component side

UNLESS OTHERWISE SPECIFIED DIMENSIONS ARE IN INCHES TOLERANCES ARE: FRACTIONS: DECIMALS: ANGLES: ±NA .XX ±.01 ±MA .XXX ±.005	APPROVALS	DATE	 Mackie Designs Inc. Woodinville, Wa.
	CHECKED: Chuck J	4-15-97	
MATERIAL: SEE NOTES	NP ENG: Cameron Jones	4-25-97	SCHEMATIC, M1400 SOFT START
FINISH: SEE NOTES	MFG:		
DO NOT SCALE DRAWING	MFG ENG:		SIZE: D SCALE: NONE DWG. NO. 990-162-00 REV. A DWG FILE: SHEET 1 OF 1