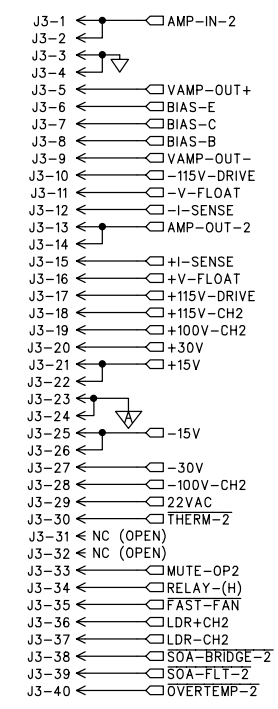
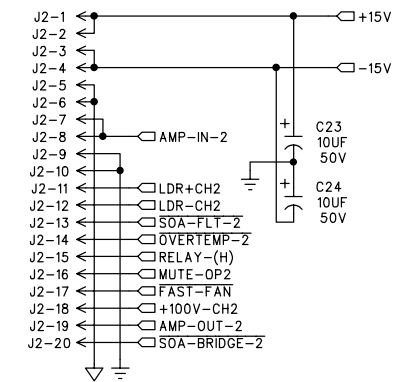


ECO#	REV:	DESCRIPTION	REV. BY:	APP. BY:	DATE
	A	RELEASE TO PRODUCTION	TRH		9-16-98

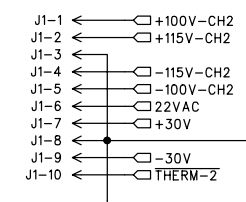
TO V-AMP / PROTECTION PCB
(055-170-00)



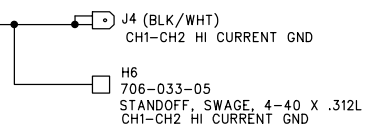
TO INPUT BOARD
(055-131-00)



TO SUPPLY PCB
(055-171-XX)



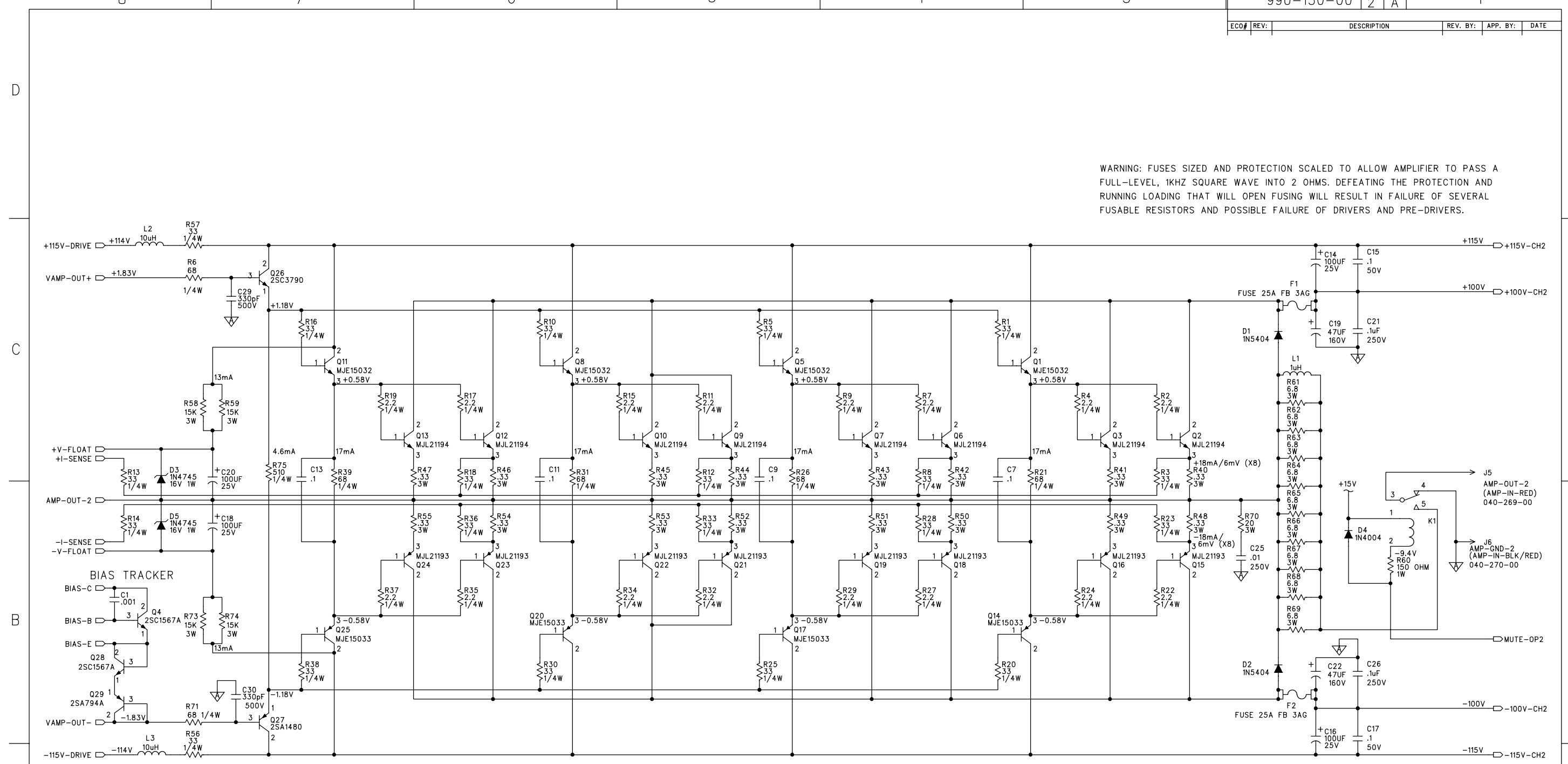
TO AMP-1 PCB
(055-129-00)



- 490-021-00
MAGNET .200 THK X .50 DIA
- 706-033-05
STANDOFF, SWAGE, 4-40 X .312L
- 450-130-00
PCB M2600 CH-2 AMP
- 400-129-00
FUSE CLIP 0.25 DIA PC MNT

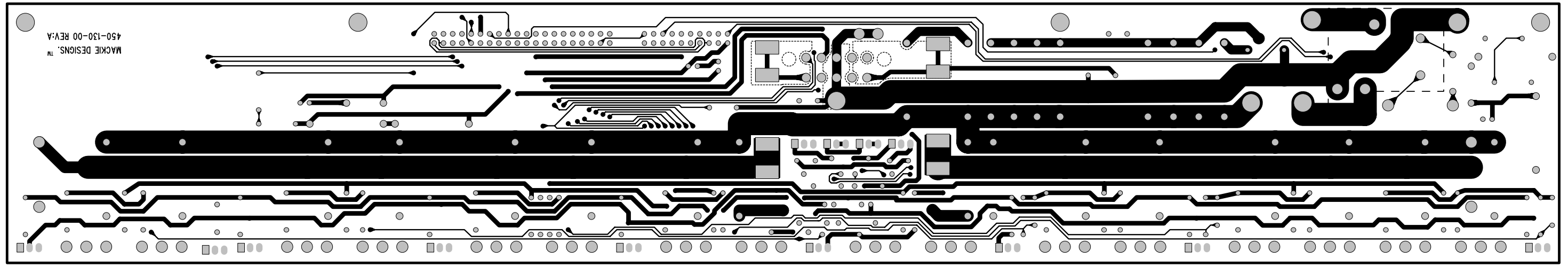
UNLESS OTHERWISE SPECIFIED DIMENSIONS ARE IN INCHES TOLERANCES ARE: FRACTIONS: DECIMALS: ANGLES: ±NA .XX ±.01 ±NA .XXX ±.005	APPROVALS	DATE	 Mackie Designs Inc. Woodinville, Wa.
	DRAWN: Cameron Jones	1-1-98	
	CHECKED:		
	NP ENG:		
MATERIAL: SEE NOTES	MATERIAL:		M2600 CHANNEL-2 AMPLIFIER
FINISH: SEE NOTES	MFG:		
DO NOT SCALE DRAWING	MFG ENG:		
	ISSUED:		SIZE: D SCALE: NONE DWG. NO. 990-130-00 REV. A DWG FILE: SHEET 1 OF 2

WARNING: FUSES SIZED AND PROTECTION SCALED TO ALLOW AMPLIFIER TO PASS A FULL-LEVEL, 1KHZ SQUARE WAVE INTO 2 OHMS. DEFEATING THE PROTECTION AND RUNNING LOADING THAT WILL OPEN FUSING WILL RESULT IN FAILURE OF SEVERAL FUSABLE RESISTORS AND POSSIBLE FAILURE OF DRIVERS AND PRE-DRIVERS.



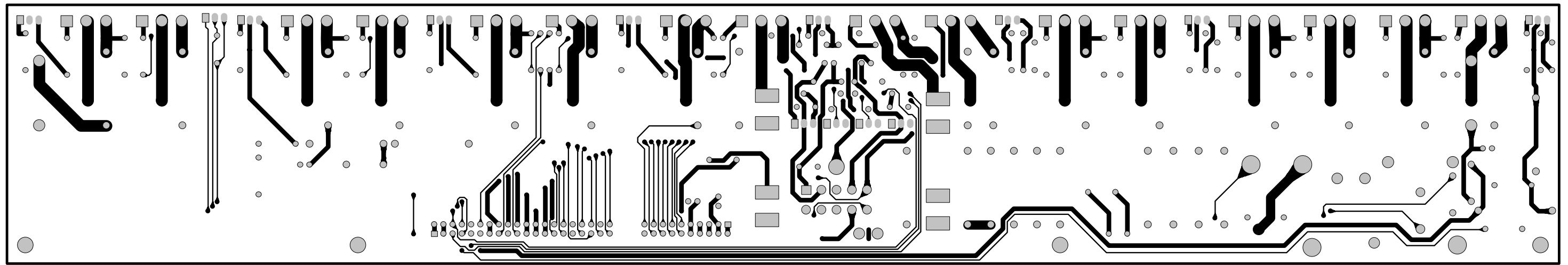
WARNING: FUSES SIZED AND PROTECTION SCALED TO ALLOW AMPLIFIER TO PASS A FULL-LEVEL, 1KHZ SQUARE WAVE INTO 2 OHMS. DEFEATING THE PROTECTION AND RUNNING LOADING THAT WILL OPEN FUSING WILL RESULT IN FAILURE OF SEVERAL FUSABLE RESISTORS AND POSSIBLE FAILURE OF DRIVERS AND PRE-DRIVERS.

UNLESS OTHERWISE SPECIFIED DIMENSIONS ARE IN INCHES TOLERANCES ARE: FRACTIONS: DECIMALS: ANGLES: ±NA .XX ±.01 ±NA .XXX ±.005	APPROVALS	DATE	Mackie Designs Inc. Woodinville, Wa.		
	DRAWN: Cameron Jones	1-1-98			
	CHECKED:				
	NP ENG:				
MATERIAL:	MATERIAL:		M2600 CHANNEL-2 AMPLIFIER		
SEE NOTES	MFG:				
SEE NOTES	MFG ENG:				
DO NOT SCALE DRAWING	ISSUED:				
		SIZE: D	SCALE: NONE	DWG. NO. 990-130-00	REV. A
		DWG FILE:			SHEET 2 OF 2



(finely dotted lines represent the copper pour boundaries)

Bottom traces



Top traces

