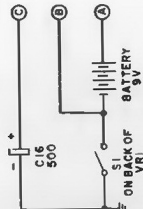
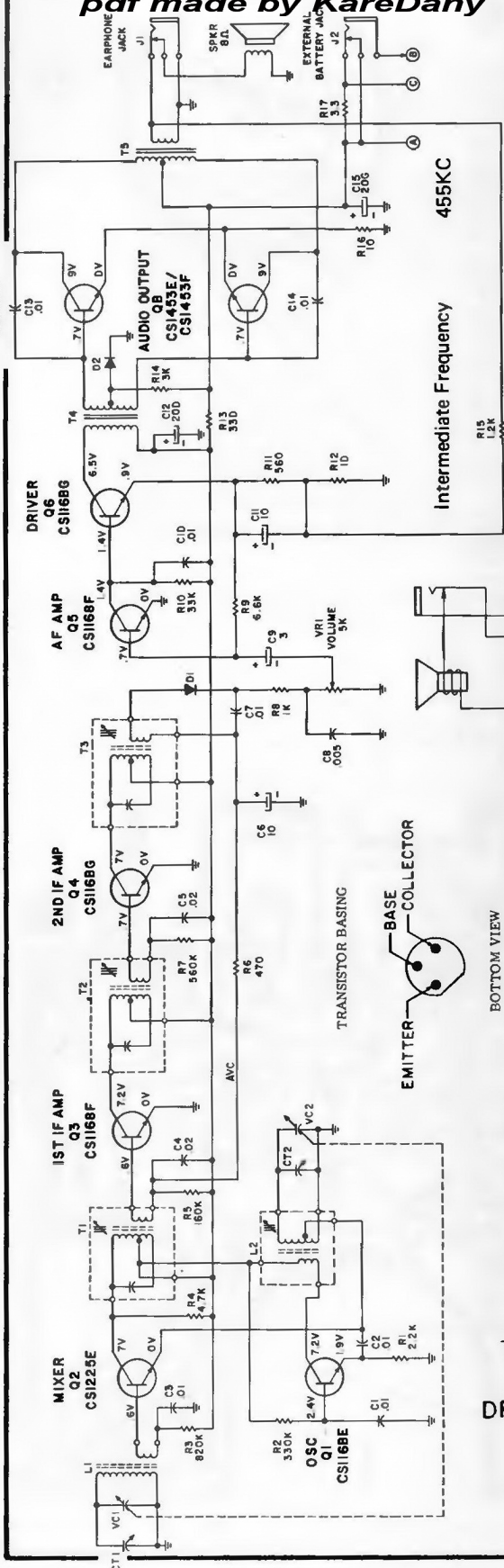


Magnavox

pdf made by KareDany

1R1002 AM SOLID-STATE RADIO

AUDIO OUTPUT
Q7
CSI453E/
CSI453F



- NOTES:
UNLESS OTHERWISE SPECIFIED
1. ALL CAPACITANCE VALUES ARE IN MFD'S.
2. ALL VOLTAGES POSITIVE WITH RESPECT TO GROUND.
3. MINIMUM CURRENT DRAIN IS 5 MA.

CIRCUIT BOARD LAYOUT (VIEWED FROM COPPER SIDE)

