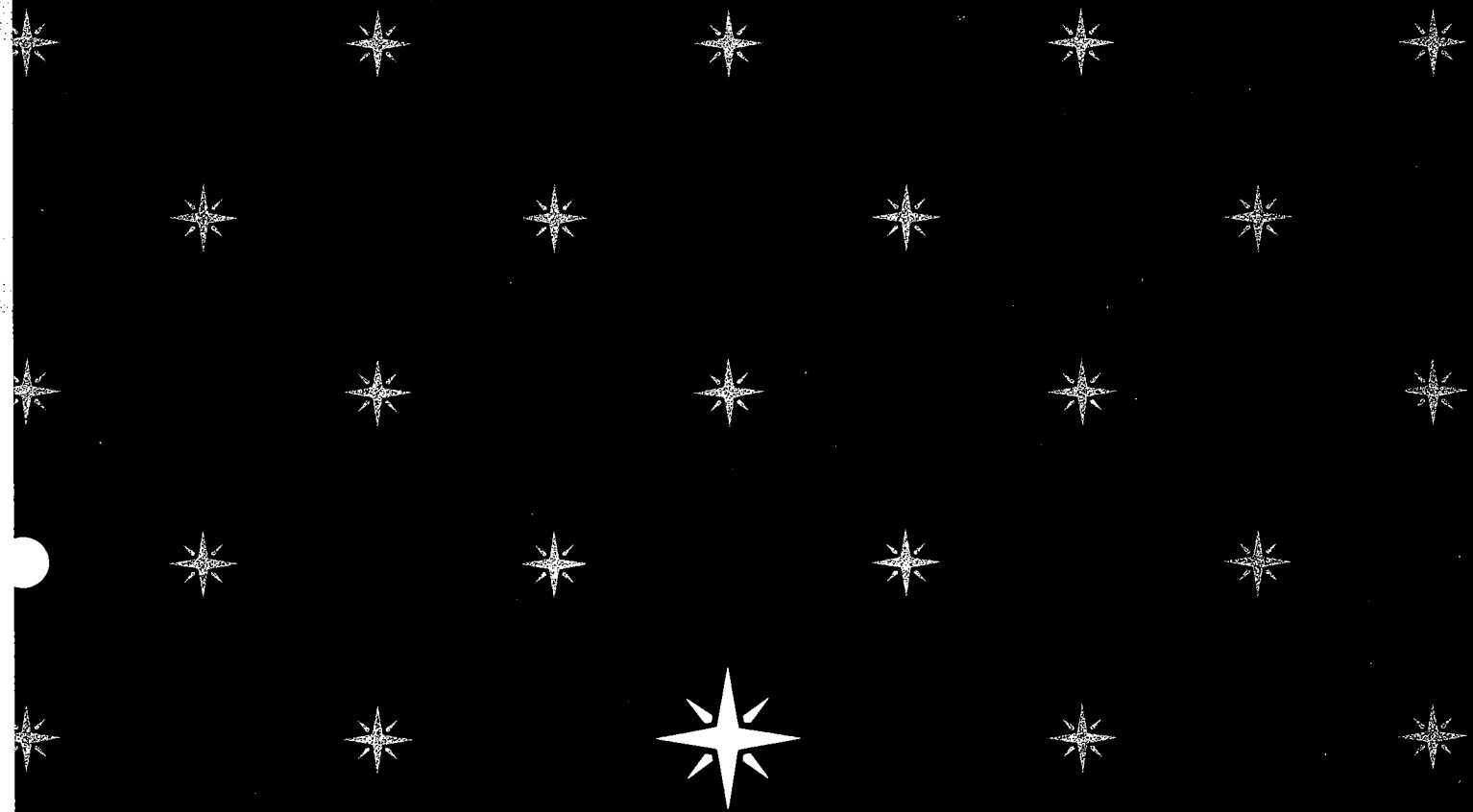


121



**SERVICE  
MANUAL 2265**



**marantz**

**model 2265**

*Stereophonic Receiver*



## TABLE OF CONTENTS

SECTION	PAGE
1. INTRODUCTION .....	1
2. TEST EQUIPMENT REQUIRED FOR SERVICING .....	2
3. AM ALIGNMENT PROCEDURE .....	2
3.1 AM IF Alignment .....	2
3.2 AM Frequency Range and Tracking Alignment .....	2
3.3 AM Signal Strength Meter Alignment .....	3
4. FM ALIGNMENT PROCEDURE .....	3
5. STEREO SEPARATION ALIGNMENT .....	3
6. MUTING CIRCUIT ALIGNMENT .....	3
7. DOLBY FM TAPE OUTPUT SETTING .....	4
8. AUDIO ADJUSTMENT .....	4
9. MAJOR COMPONENT LOCATIONS .....	5
9.1 Front Panel Adjustment and Component Locations .....	5
9.2 Main Chassis Component Locations (Top View) .....	5
9.3 Rear Panel Adjustment and Component Locations .....	6
9.4 Main Chassis Component Locations (Bottom View) .....	6
10. DIAGRAM AND COMPONENT LOCATIONS .....	7
10.1 FM Front End and AM Tuner Assembly (P100) Schematic Diagram and Component Locations .....	7
10.2 AM Tuner Assembly (P150) Schematic Diagram and Component Locations .....	8
10.3 FM IF Amplifier, Detector, Muting Control and Meter Unit Assembly (P200) Schematic Diagram and Component Locations .....	9
10.4 MPX Stereo Decoding Amplifier Assembly (P300) Schematic Diagram and Component Locations .....	10
10.5 Dolby FM Set Assembly (PC01) Schematic Diagram and Component Locations .....	11
10.6 Phono Amplifier Assembly (P400) Schematic Diagram and Component Locations .....	11
10.7 Power Amplifier Assembly (P700) Schematic Diagram and Component Locations .....	12
10.8 Power Supply Assembly (P800) Schematic Diagram and Component Locations .....	13
10.9 Tone Amplifier Assembly (PE01) Schematic Diagram and Component Locations .....	14
10.10 Filter Assembly (PH01) Schematic Diagram and Component Locations .....	15
10.11 Main/Remote Assembly (PT01) Schematic Diagram and Component Locations .....	15
10.12 Dial Lamp Assembly (PZ01) Schematic Diagram and Component Locations .....	16
10.13 Functions Lamp Assembly (PY01) Schematic Diagram and Component Locations .....	16
10.14 ANT. Muting Assembly (PU01) Schematic Diagram and Component Locations .....	16
11. BLOCK DIAGRAM .....	17
12. CONNECTION DIAGRAM .....	18
13. SCHEMATIC DIAGRAM .....	20
14. EXPLODED MECHANICAL DIAGRAM .....	22
15. PARTS LIST .....	24
16. TECHNICAL SPECIFICATIONS .....	36
17. PACKING MATERIAL EXPLODED VIEW .....	38
SERVICE INFORMATION FOR EUROPEAN MODEL .....	39

## 1. INTRODUCTION

This service manual was prepared for use by Authorized Warranty Stations and contains service information for Marantz Model 2265 Stereophonic Receiver.

Servicing information and voltage data included in this manual are intended for use by the knowledgeable and experienced technician only. All instructions should be read carefully. No

attempt should be made to proceed without a good understanding of the operation of the receiver.

The parts list furnishes information by which replacement parts may be ordered from the Marantz Company. A simple description is included for parts which can usually be obtained through local suppliers.

### 1.1 P.W. BOARD

As can be seen from the circuit diagram the chassis of Model 2265 consists of the following units. Each unit mounted on a printed circuit

board is described within the square enclosed by a bold dotted line on the circuit diagram.

1. FM Front End .....	Mounted on P.W. Board, P 100
2. AM Tuner .....	Mounted on P.W. Board, P 150
3. FM-IF .....	Mounted on P.W. Board, P 200
4. MPX .....	Mounted on P.W. Board, P 300
5. ANT. Muting .....	Mounted on P.W. Board, PU01
6. Dolby Level .....	Mounted on P.W. Board, PC01
7. Phone Amp. ....	Mounted on P.W. Board, P 400
8. Dial Lamp .....	Mounted on P.W. Board, PZ01
9. Monitor, SW .....	Mounted on P.W. Board, PT01
10. Function Lamp .....	Mounted on P.W. Board, PY01
11. Pre Tone Amp. ....	Mounted on P.W. Board, PE01
12. Filter, SP SW .....	Mounted on P.W. Board, PH01
13. Power Amp. ....	Mounted on P.W. Board, P 700
14. Power Supply .....	Mounted on P.W. Board, P 800

## 2. TEST EQUIPMENT REQUIRED FOR SERVICING

Table 1 lists the test equipment required for servicing the Model 2265 Receiver.

Item	Manufacturer and Model No.	Use
AM Signal Generator		Signal source for AM alignment
Test Loop		Use with AM Signal Generator
FM Signal Generator MPX Signal Generator	Sound Technology Model 1000A	Signal source for FM alignment Stereo separation alignment and trouble shooting
Distortion Analyzer Audio Oscillator AC VTVM	Sound Technology Model 1700A	Distortion measurements Sinewave and squarewave signal source Voltage measurements (AC)
Oscilloscope	Tektronix Model T932 Philips Model 3232	Waveform analysis and trouble shooting and ASO alignment
Frequency Counter	Fluke Model 1900A	MPX Oscillator adjustment (VCO)
Circuit Tester		Trouble shooting
DC VTVM	Fluke Model 8000 "Digital" Simpson Model 313, Triplet Model 801	Voltage measurements (DC)
AC Wattmeter	Simpson Model 1379	Monitors primary power to amplifier
AC Ammeter	Commercial Grade (1-10A)	Monitors amplifier output under short circuit condition
Line Voltmeter	Simpson Model 1359	Monitors potential of primary power to amplifier
Variable Autotransformer	Superior Electronic Co., Powerstat Model 116B-10A	Adjusts level of primary power to amplifier
Shorting Plug	Use phono plug with 600 ohm across center pin and shell	Shorts amplifier input to eliminate noise pickup
Output Load (8 ohms, 0.5%, 100W)	Commercial Grade	Provides 8-ohm load for amplifier output termination
Output Load (4 ohms, 0.5%, 100W)	Commercial Grade	Provides 4-ohm load for amplifier output termination

## 3. AM ALIGNMENT PROCEDURE

### 3.1 AM IF Alignment

1. Connect a sweep generator to the J153 and an alignment scope to the test point B.
2. Rotate each core of IF transformer L153 for maximum height and flat top symmetrical response.

### 3.2 AM Frequency Range and Tracking Alignment

1. Set AM signal generator to 515 kHz. Turn the tuning capacitor fully closed (place the tuning pointer at the low end) and adjust the oscillator coil L152 for maximum audio output.
2. Set the signal generator to 1650 kHz. Place the tuning pointer in the high frequency end and adjust the oscillator trimmer on the oscillator tuning capacitor for maximum audio output.
3. Repeat steps 1 and 2 until no further adjustment is necessary.
4. Set the generator to 600 kHz and tune the receiver to the same frequency and adjust a slug core of AM ferrite rod antenna and RF coil L151 for maximum output.
5. Set the generator to 1400 kHz and tune the receiver to the same frequency and adjust both trimming capacitors of antenna and RF tuned circuit for maximum output.
6. Repeat steps 4 and 5 until no further adjustment is necessary.

**NOTE:** During tracking alignment reduce the signal generator output as necessary to avoid AGC action.

### 3.3 AM Signal Strength Meter Alignment

Set an AM signal generator to 1000 kHz at  $5\mu\text{V}$ , and adjust R178 so that the signal strength meter may read 90% of the full scale.

## 4. FM ALIGNMENT PROCEDURE

1. Connect an FM signal generator to the FM ANTENNA terminals and an oscilloscope and an audio distortion analyzer to the TAPE OUTPUT jacks on the rear panel.
2. Set the FM SG to 87 MHz and provide about 3 to  $5\mu\text{V}$ . Place the tuning pointer at the low frequency end by rotating the tuning knob and adjust the core of oscillator coil L104 to obtain maximum audio output.
3. Set the FM SG to 109 MHz and provide about 3 to  $5\mu\text{V}$  output. Rotate the tuning knob and place the tuning pointer at the high frequency end and adjust the trimming capacitor C106 for maximum output.
4. Repeat steps 2 and 3 until no further adjustment is necessary.
5. Set the FM SG to 90 MHz and tune the receiver to the same frequency. Decrease signal generator output until the audio output level decreases with the decreasing generator output. Adjust the antenna coil L101, RF coils L102, L103 and L104 and IF transformer L106 for minimum audio distortion.
6. Set the FM SG to 106 MHz and tune the receiver to the same frequency. Adjust the trimming capacitor CF01, CF02 and CF03 for minimum distortion.
7. Repeat steps 5 and 6 until no further adjustment is necessary.
8. Adjust the secondary core (upper) of discriminator transformer L201 so that the center tuning meter pointer indicates its center at no signal applied. Set the FM SG to

98 MHz and increase its output level  $1\mu\text{V}$  and tune the receiver to the same frequency so that the center tuning meter pointer indicates its center.

Adjust the primary core (lower) of L201 for minimum distortion.

9. Set the FM SG to 98 MHz at  $1000\mu\text{V}$ , and adjust R374 so that the signal strength meter may read 90% of the full scale.

## 5. STEREO SEPARATION ALIGNMENT

1. Set the FM SG to provide  $1\mu\text{V}$  at 98 MHz. Tune the receiver to the same frequency so that the center tuning meter pointer indicates its center.
2. Turn the FM SG modulation off (with the pilot signal turned off), connect a frequency counter to test point J310, and adjust R311 so that the frequency counter may precisely read 19 kHz.
3. Modulate the FM SG with stereo composite signal consisting only of subchannel signal (of course a pilot signal must be included).
4. Adjust the trimming resistor R301 for maximum and same separation in both channels.

## 6. MUTING CIRCUIT ALIGNMENT

1. Connect a VTVM across the resistor R363 and adjust the resistor R363 until the meter reads 0.75V DC at no signal.
2. Set the FM SG to provide  $1\mu\text{V}$  at 98 MHz and tune the receiver to the same frequency correctly.
3. Turn on MUTING push switch. Shift the FM signal generator frequency to plus and minus and note both plus and minus shifted frequencies at which undesirable audio side responses are muted out. Adjust the R363 so that the same shifted frequencies mute the undesirable side response.
4. Adjust R362 for proper frequency shift at which the muting circuit operates.

## 7. DOLBY FM TAPE OUTPUT SETTING

1. Set the modulation of FM SG to 400 Hz, 50% ( $\pm 37.5$  kHz Dev.)
2. Set the FM SG to provide  $1 \text{ k}\mu\text{V}$  at 98 MHz. Tune the receiver to the same frequency so that the center tuning meter pointer indicates its center.
3. Turn on DOLBY FM push switch. Set the semifixed resistors RC01 and RC02 so that the output of the TAPE OUTPUT terminals R and L become 580 mV at VTVM.

## 8. AUDIO ADJUSTMENT

1. Voltage adjustment  
Connect a DC voltmeter between pin terminal J804 and J805, and adjust the trimming resistor R806 for 35V DC.
2. Main Amplifier DC off-set alignment  
Connect a DC voltmeter with 0.5 or 1V range between the speaker terminals and adjust the

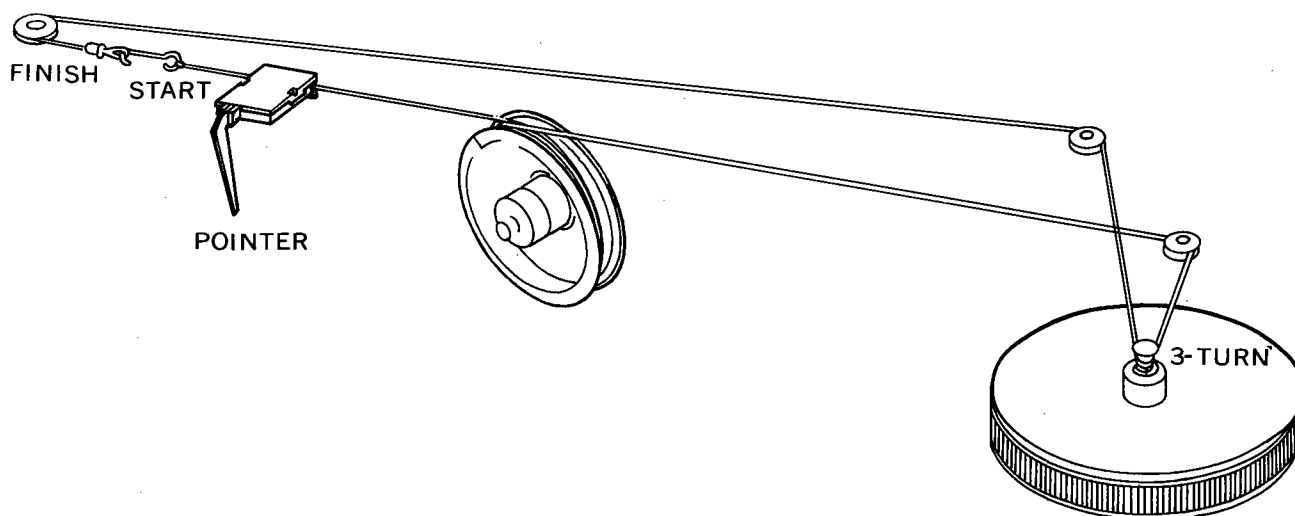
trimming resistor R708 for "zero" DC output on the meter.

Repeat the same procedure for the other channel.

Note: During this alignment no load should be connected to the speaker terminals.

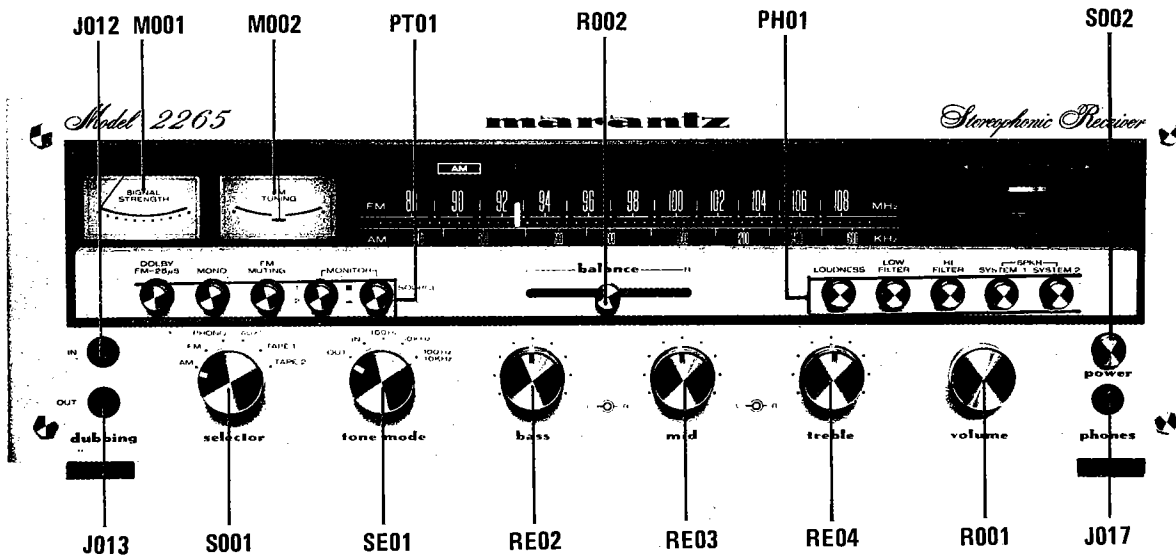
3. Idle-current adjustment  
Connect a VTVM between pin terminals J715 and J716. Next, adjust the trimming resistor R717 so the VTVM reads 13 mV DC. Repeat the same procedure for the other channel.
4. Check DC off-set voltage aligned in the procedure 2 and if any DC output is observed on the DC voltmeter, adjust the R708 again for "zero" output.
5. Phono-amplifier adjustment  
Connect an oscilloscope to the TAPE OUT jacks and an audio signal generator to the PHONO jacks. Place the selector switch in the PHONO position. Increase 1 kHz audio signal gradually until a slight clipping on top of the sine-wave is observed on the oscilloscope. Adjust the trimming resistor R408 for equal clipping level.  
For the other channel adjust R409.

### Dial Stringing

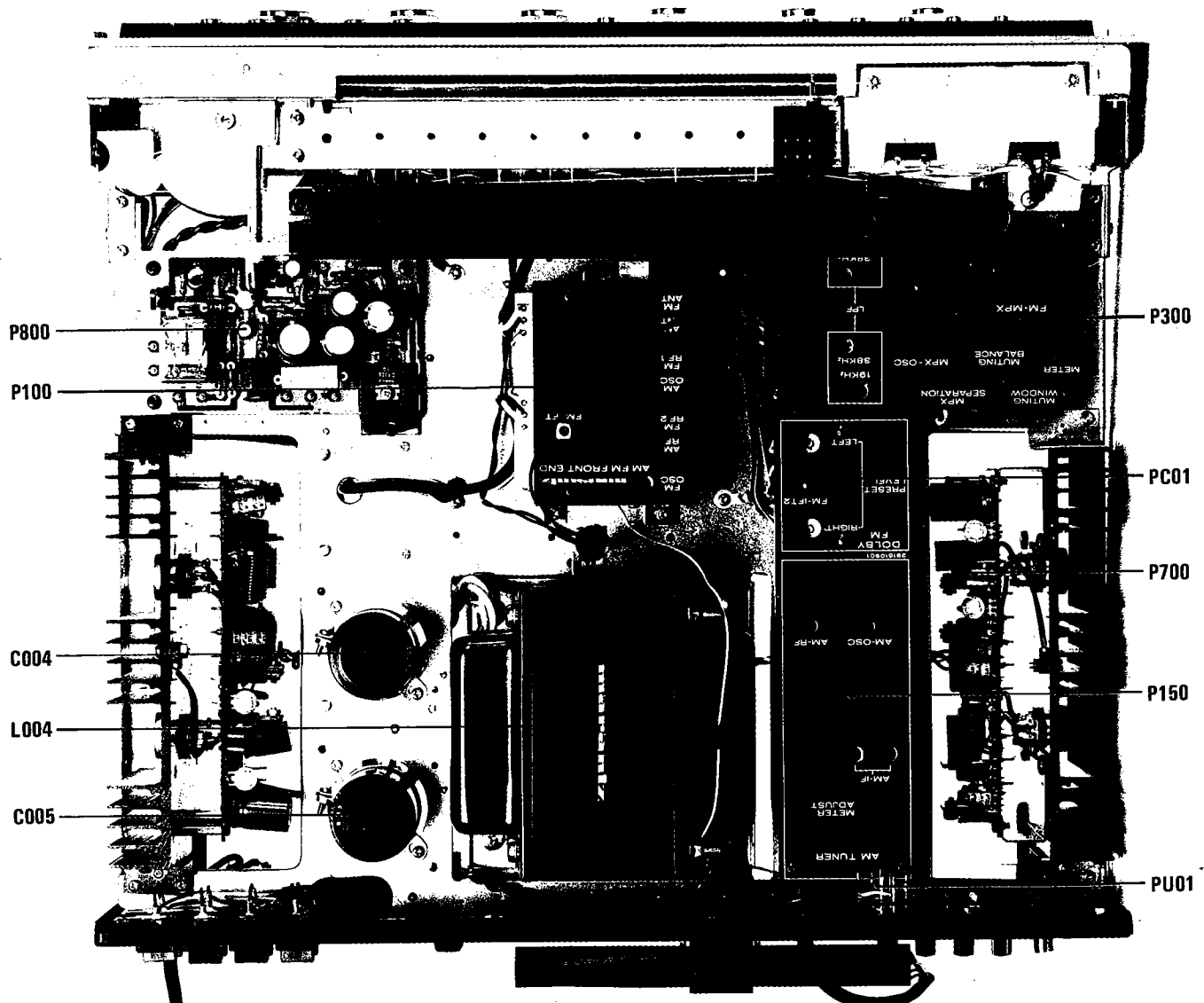


## 9. MAJOR COMPONENT LOCATIONS

### 9.1 Front Panel Adjustment and Component Locations

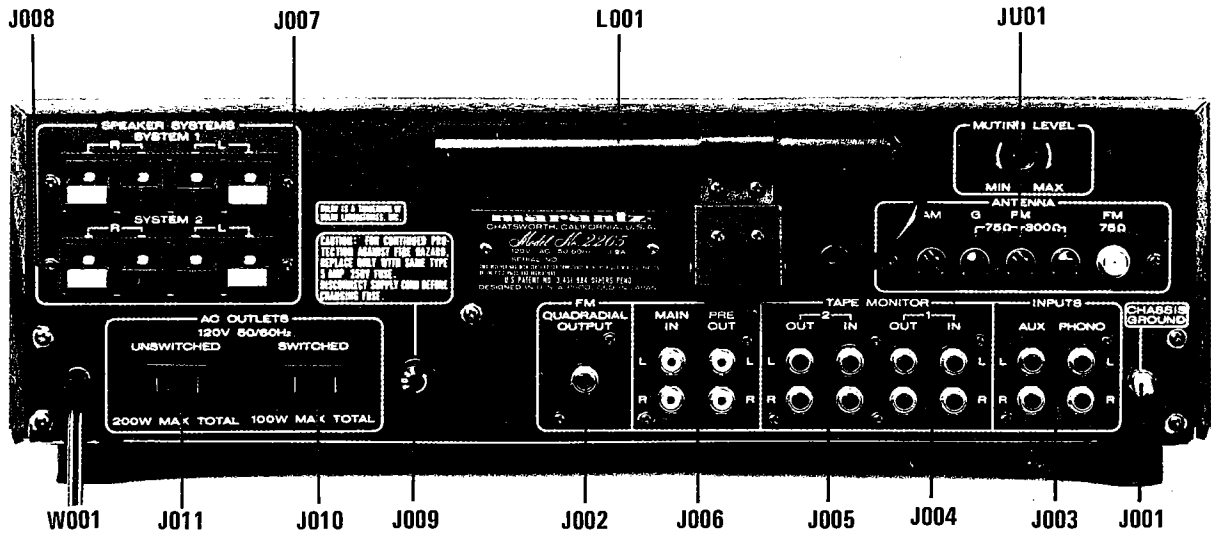


### 9.2 Main Chassis Component Locations (Top View)

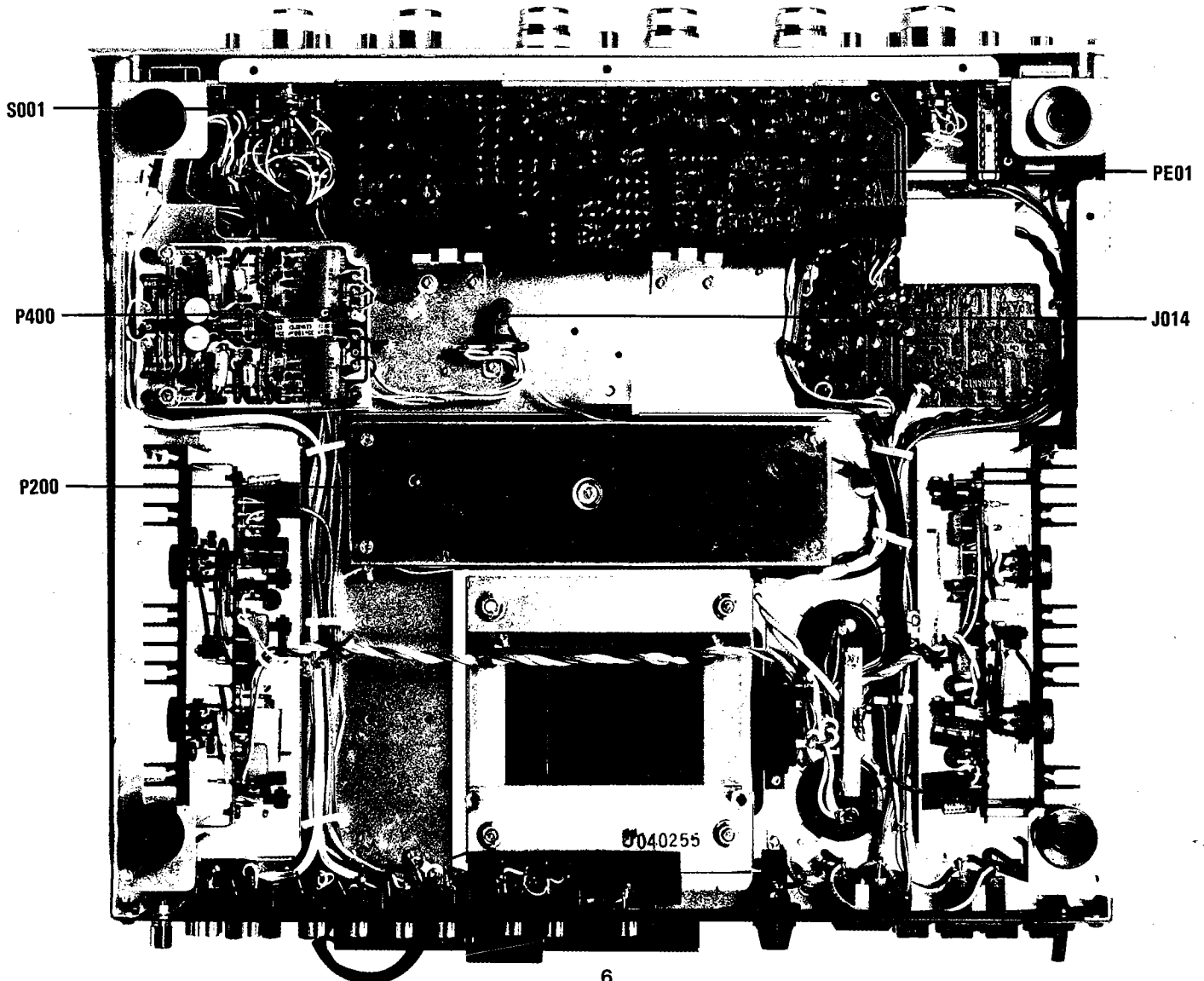




### 9.3 Rear Panel Adjustment and Component Locations

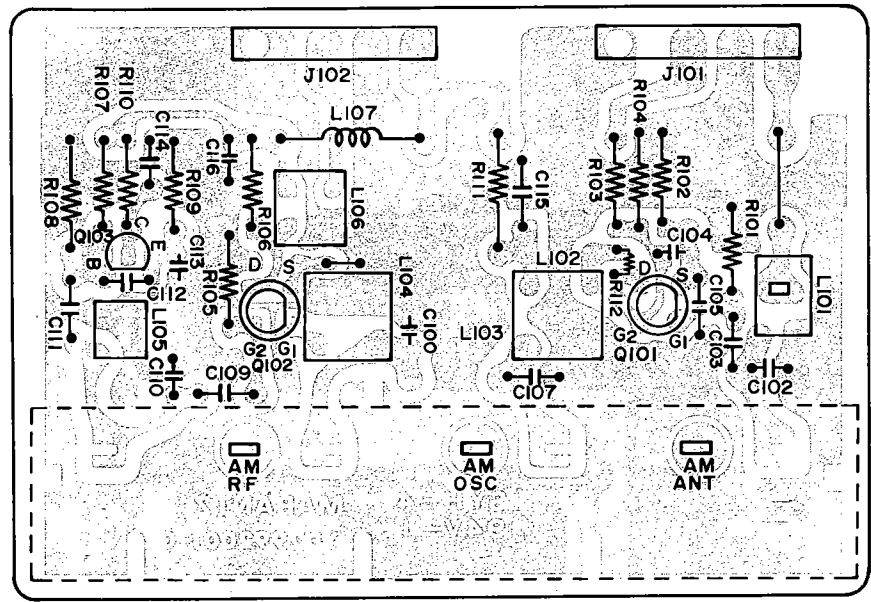
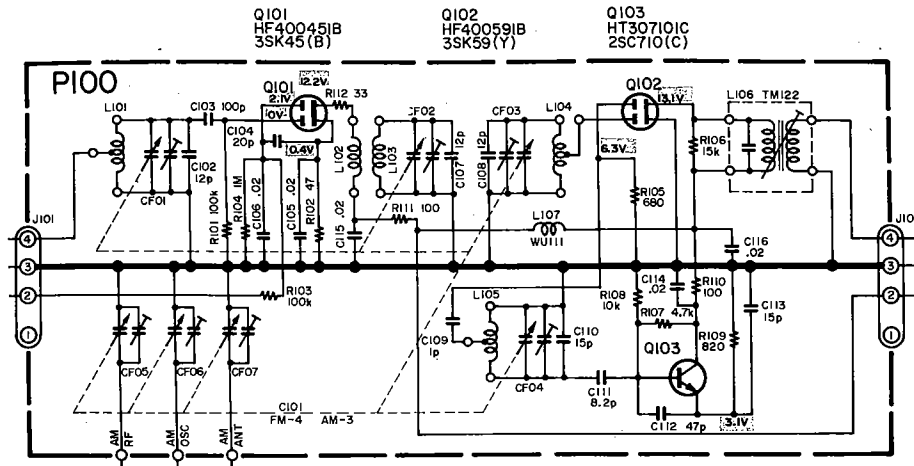


### 9.4 Main Chassis Component Locations (Bottom View)

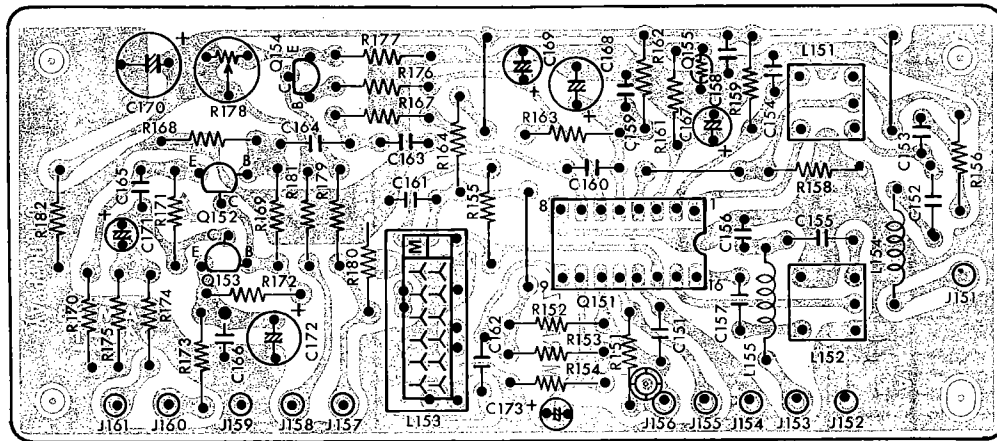
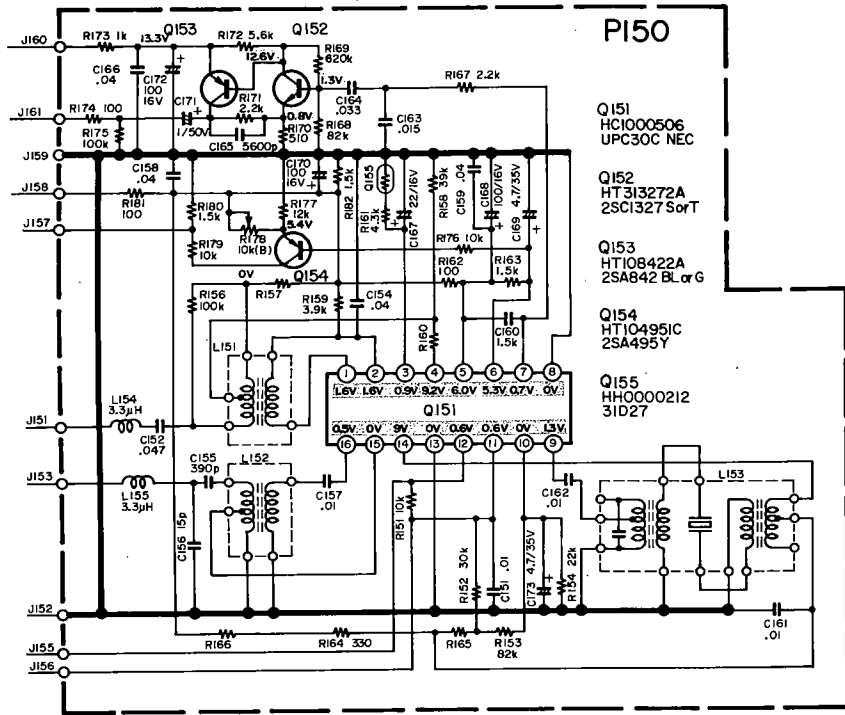


## 10. DIAGRAM AND COMPONENT LOCATIONS

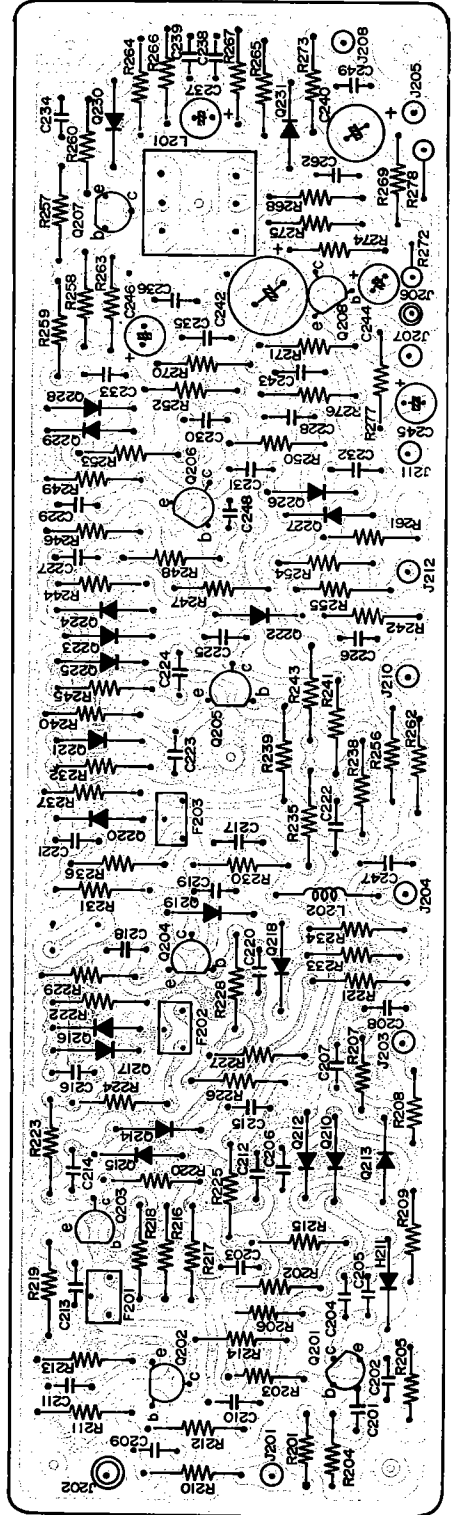
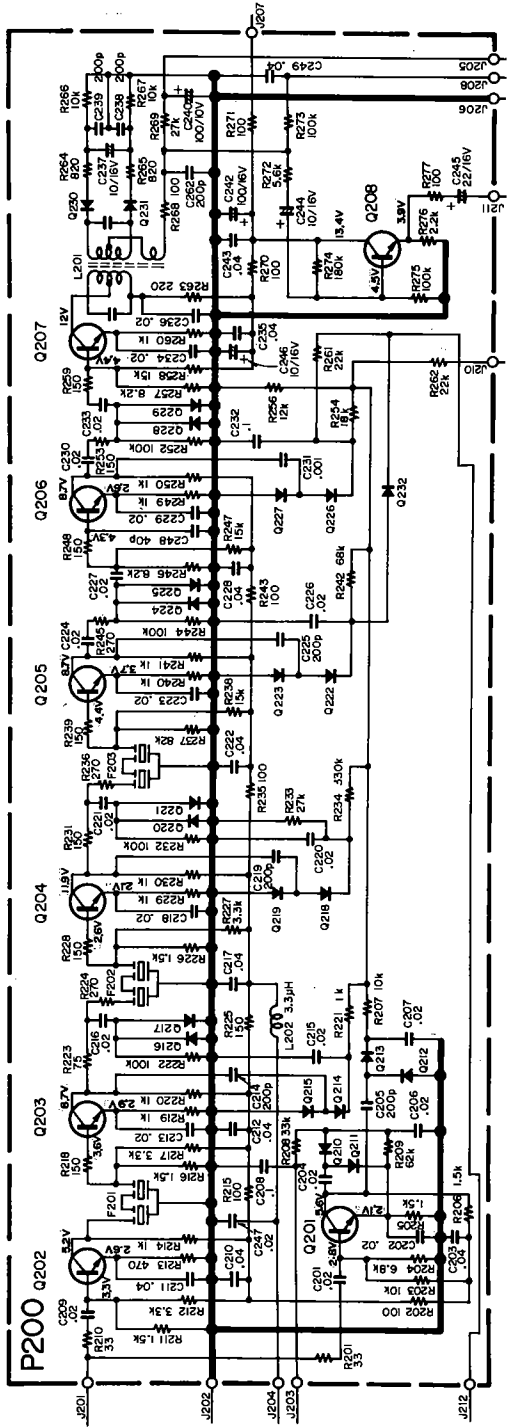
### 10.1 FM Front End and AM Tuner Assembly (P100) Schematic Diagram and Component Locations



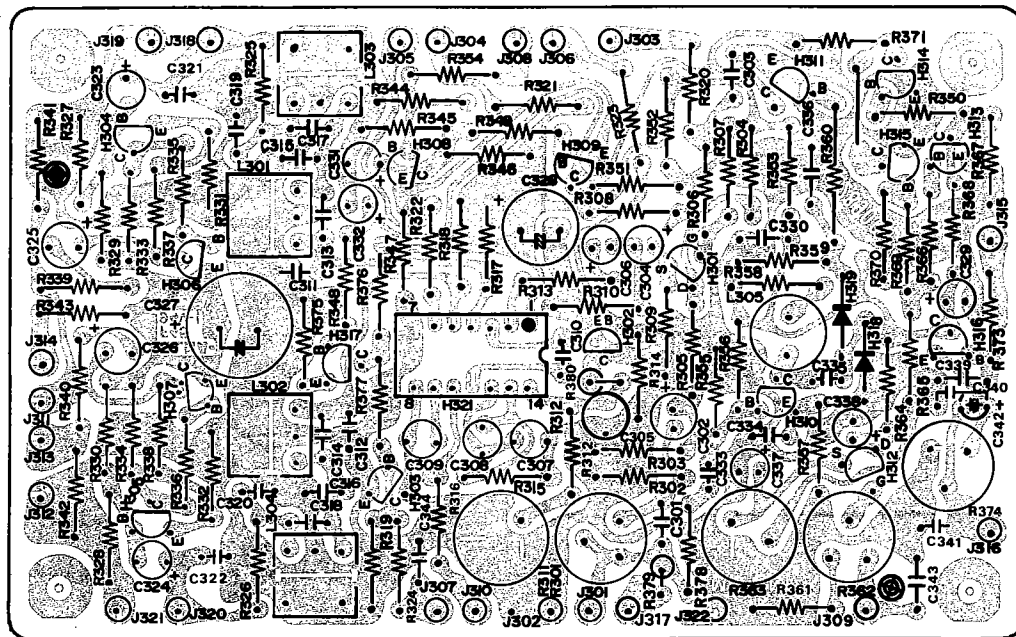
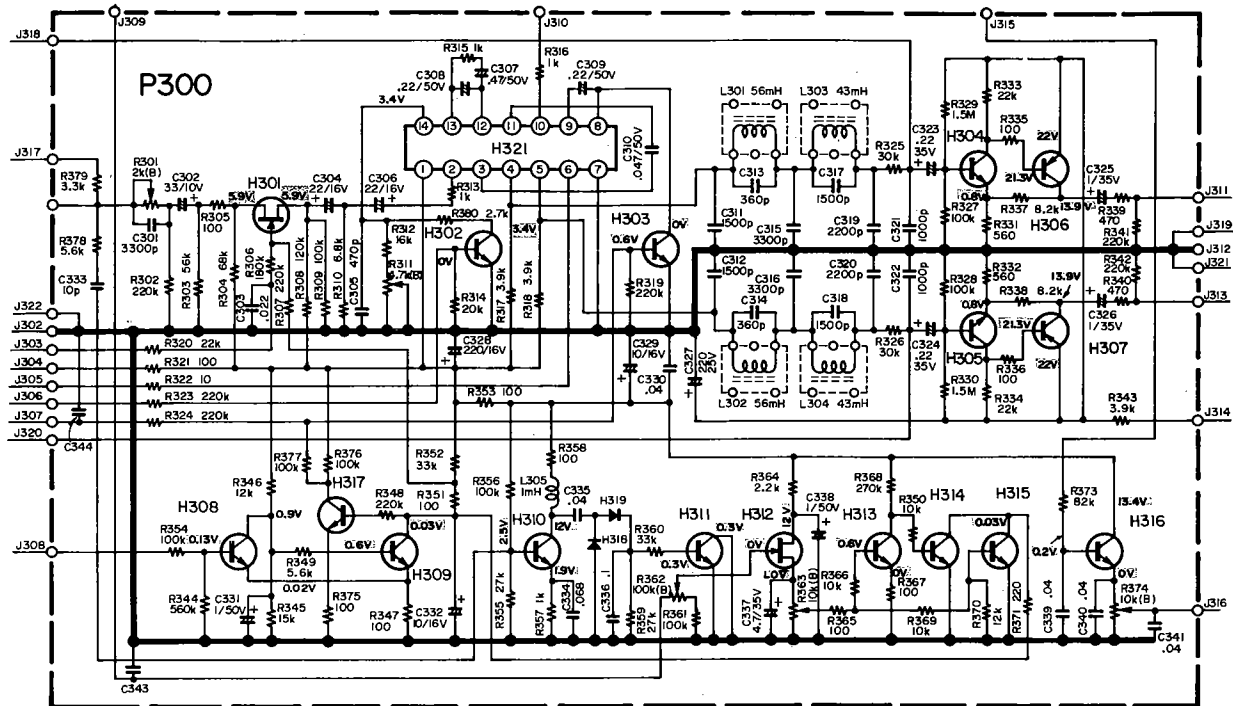
## 10.2 AM Tuner Assembly (P150) Schematic Diagram and Component Locations



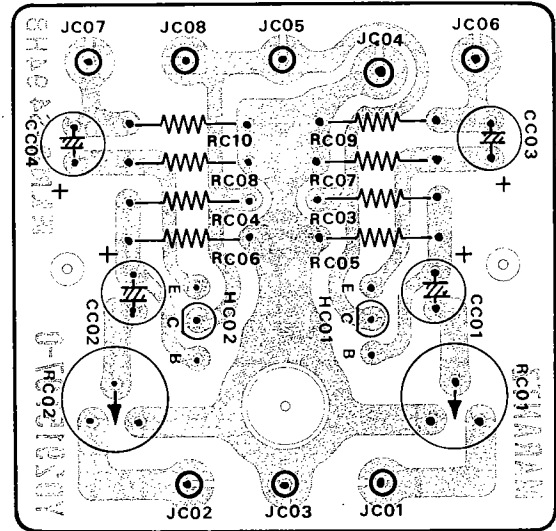
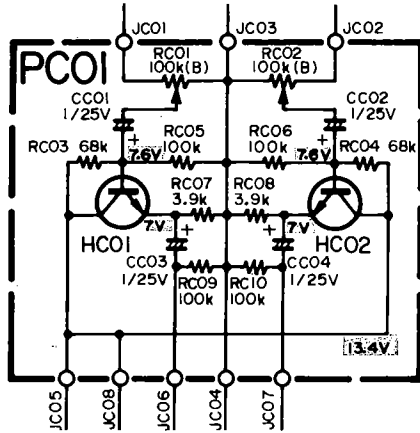
### 10.3 FM IF Amplifier, Detector, Muting Control and Meter Unit Assembly (P200) Schematic Diagram and Component Locations



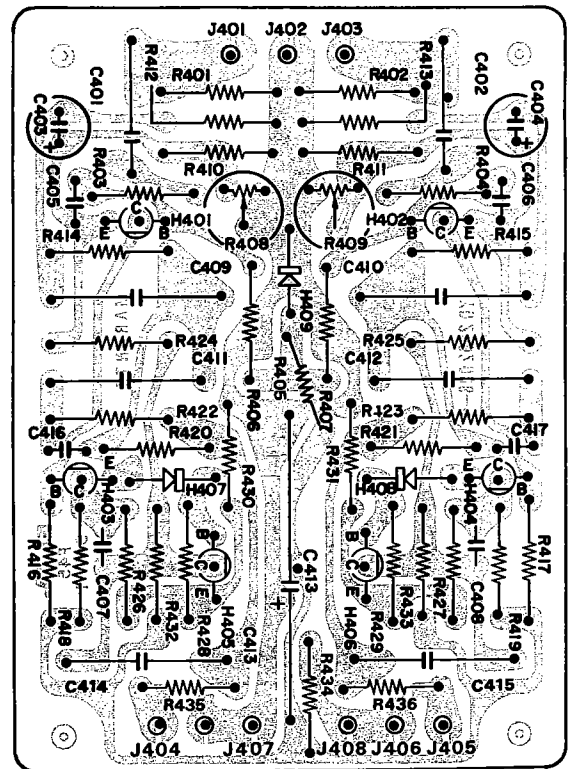
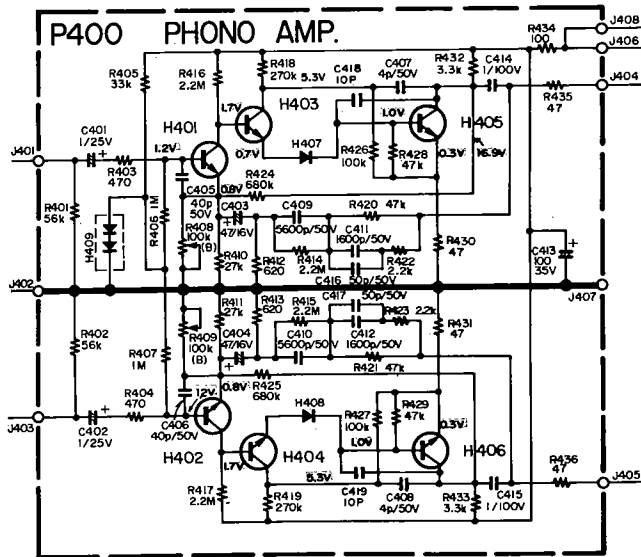
## 10.4 MPX Stereo Decoding Amplifier Assembly (P300) Schematic Diagram and Component Locations



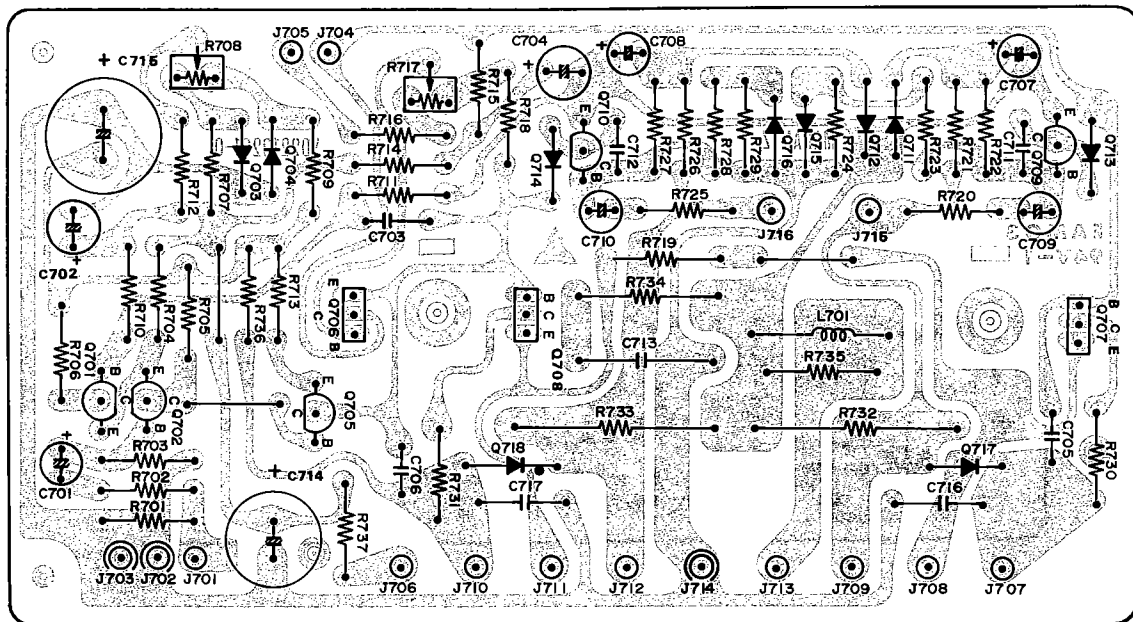
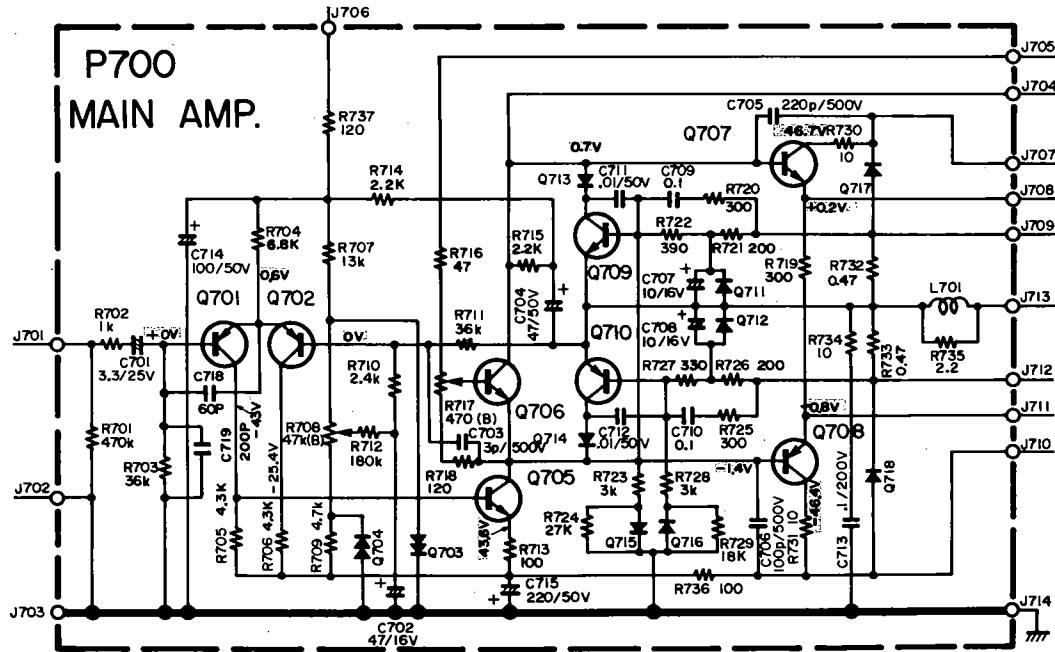
10.5 Dolby FM Set Assembly (PC01) Schematic Diagram and Component Locations



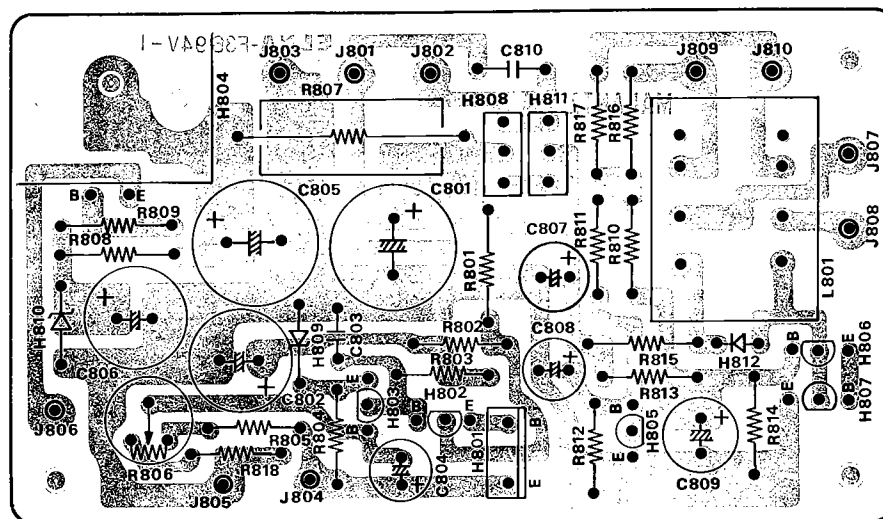
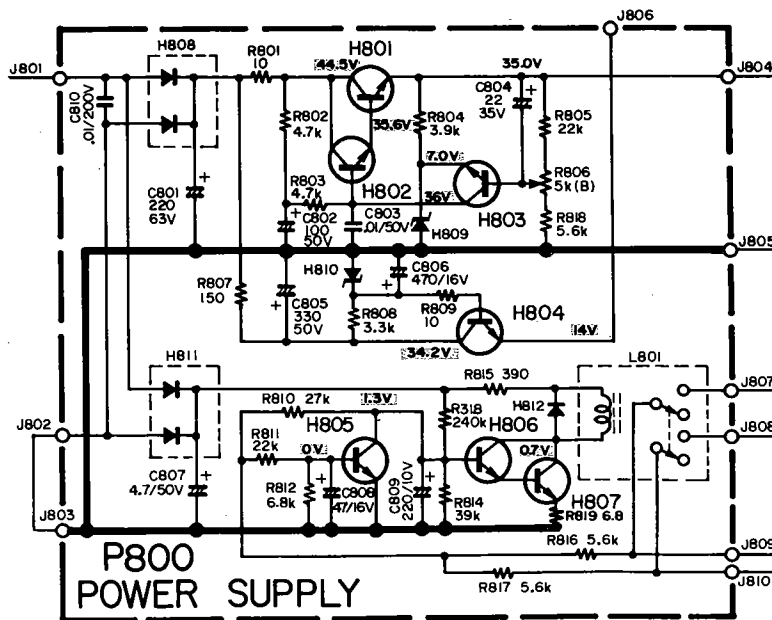
10.6 Phono Amplifier Assembly (P400) Schematic Diagram and Component Locations



## 10.7 Power Amplifier Assembly (P700) Schematic Diagram and Component Locations

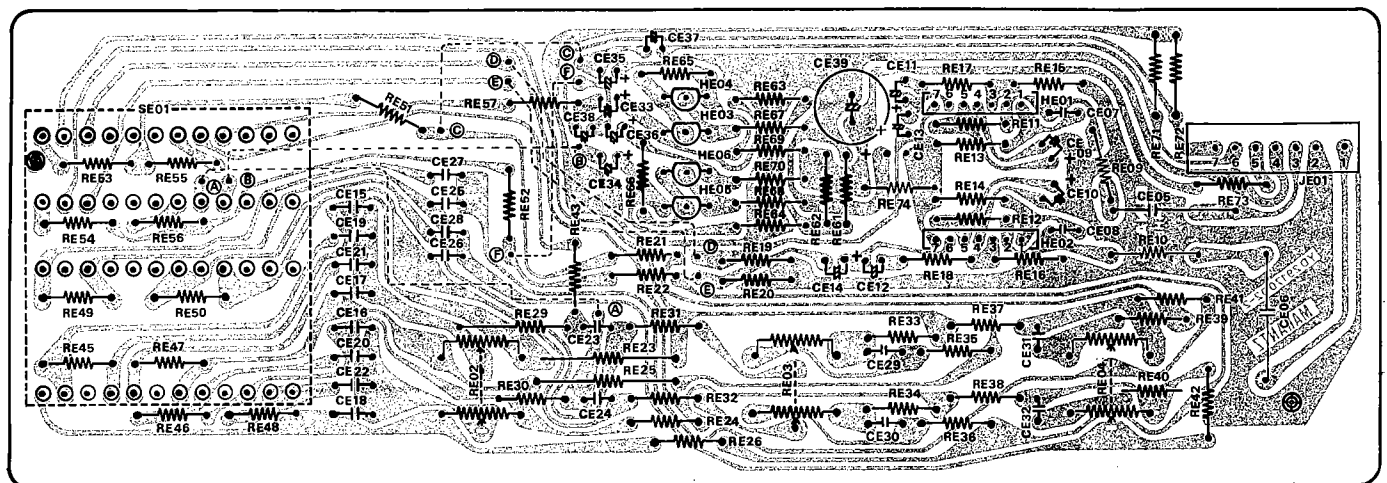
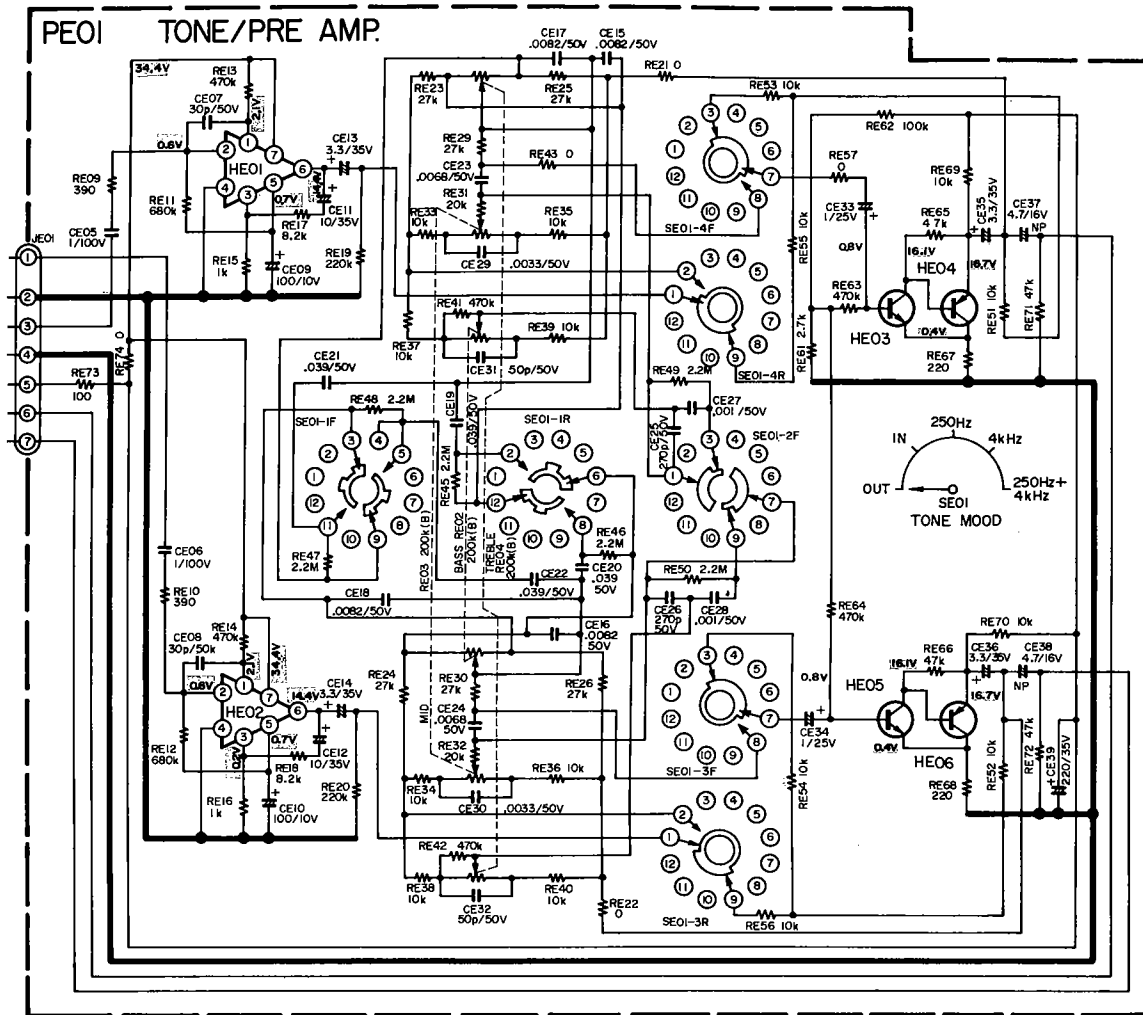


### 10.8 Power Supply Assembly (P800) Schematic Diagram and Component Locations

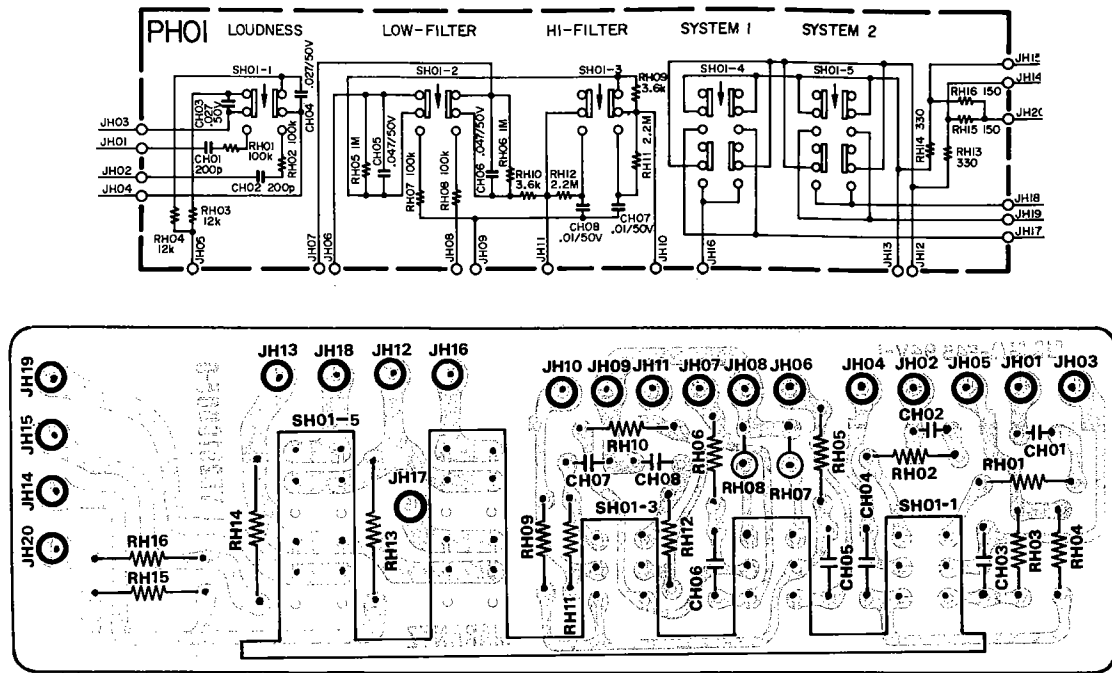




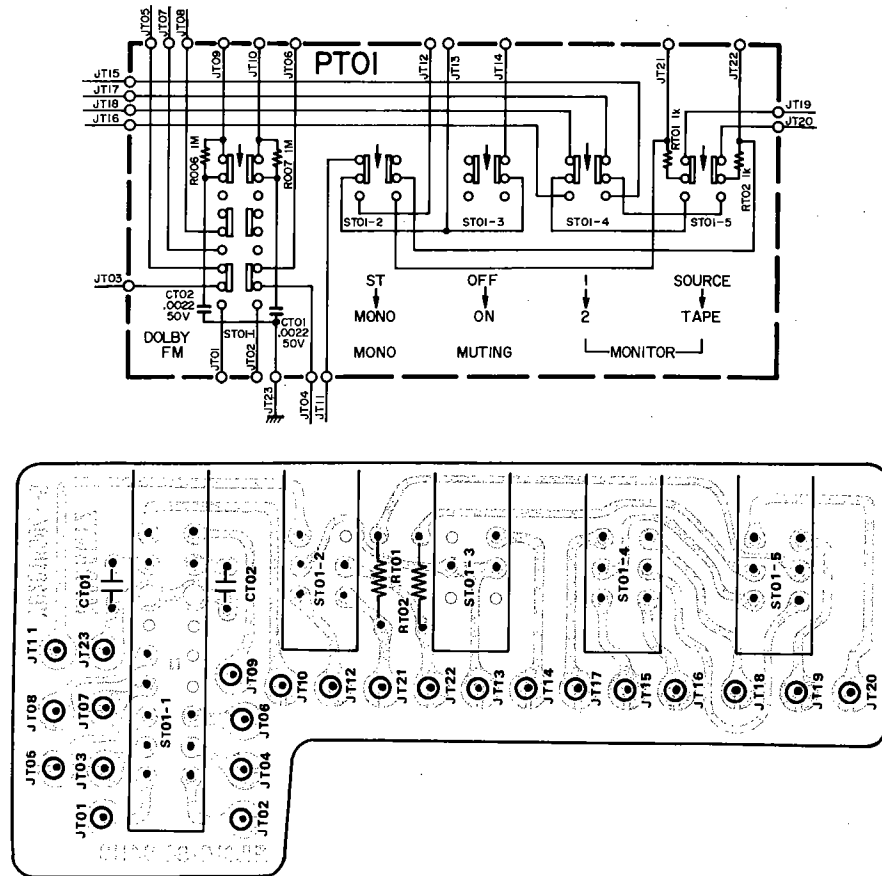
# 10.9 Tone Amplifier Assembly (PE01) Schematic Diagram and Component Locations



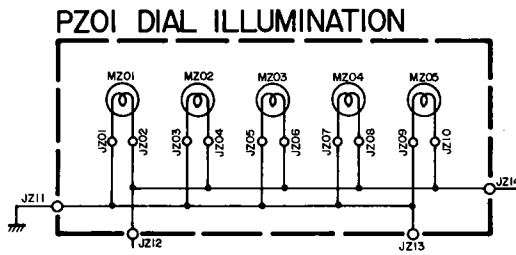
### 10.10 Filter Assembly (PH01) Schematic Diagram and Component Locations



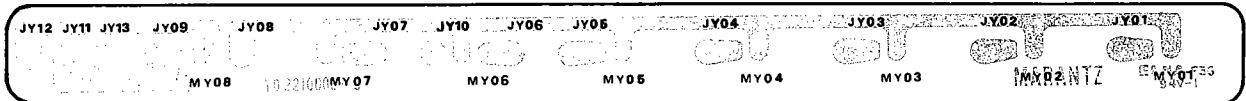
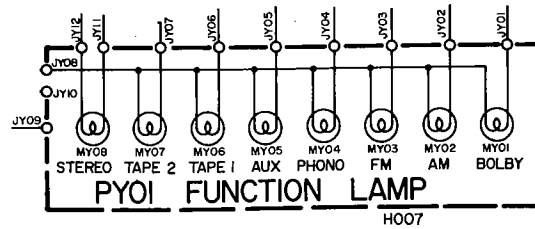
### 10.11 Main/Remote Assembly (PT01) Schematic Diagram and Component Locations



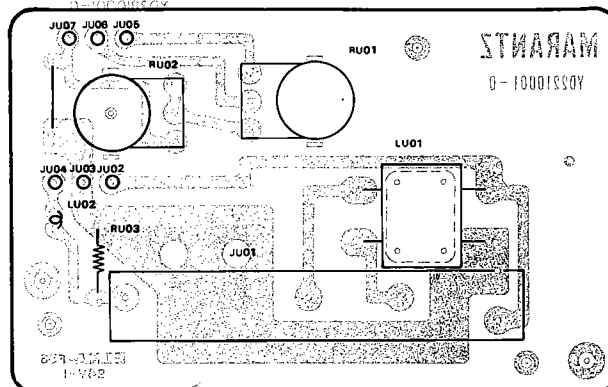
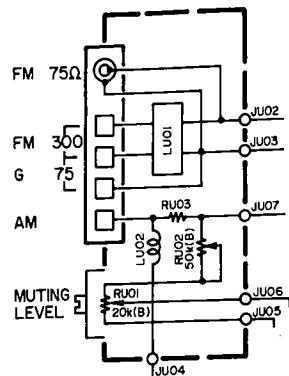
### 10.12 Dial Lamp Assembly (PZ01) Schematic Diagram and Component Locations



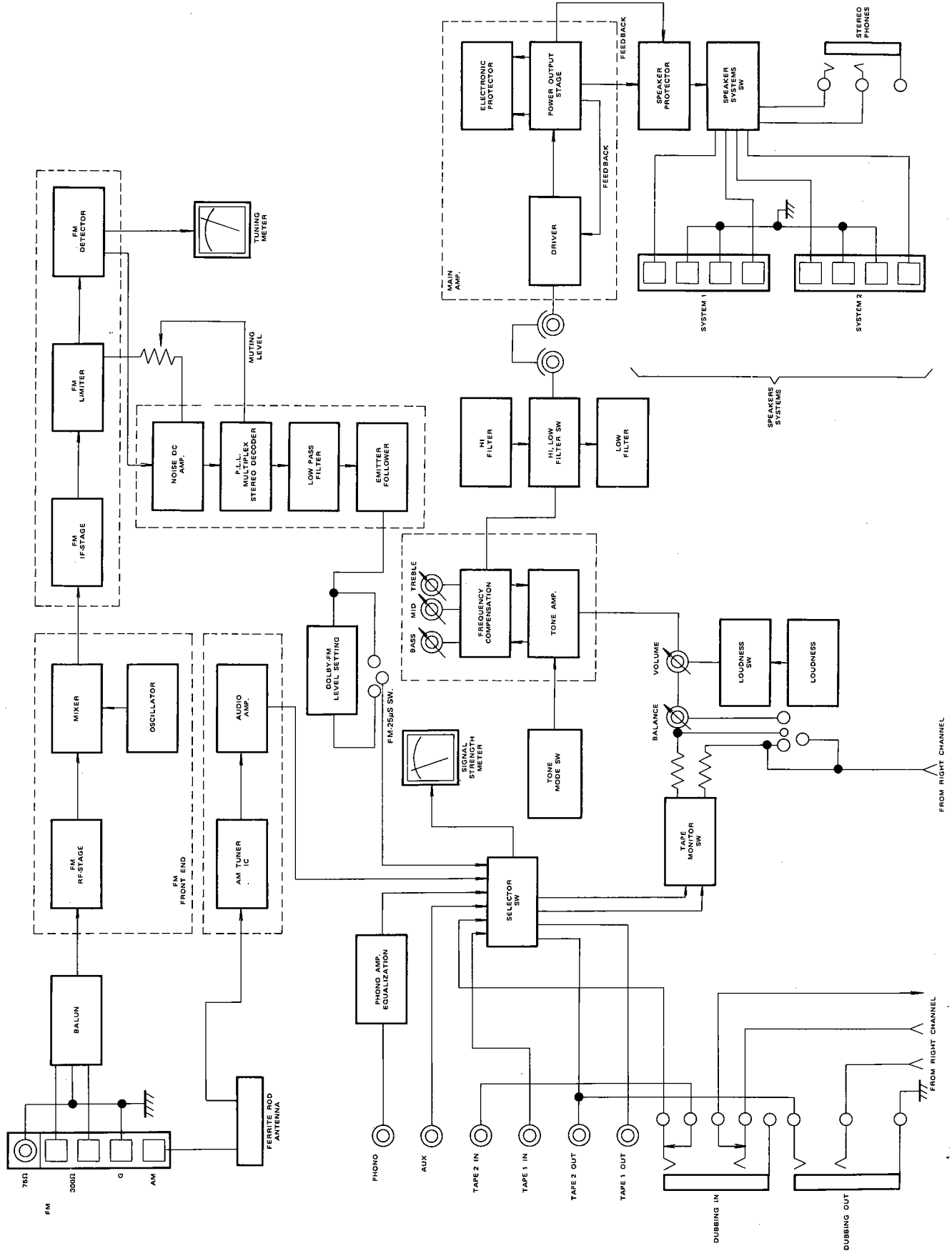
### 10.13 Functions Lamp Assembly (PY01) Schematic Diagram and Component Locations



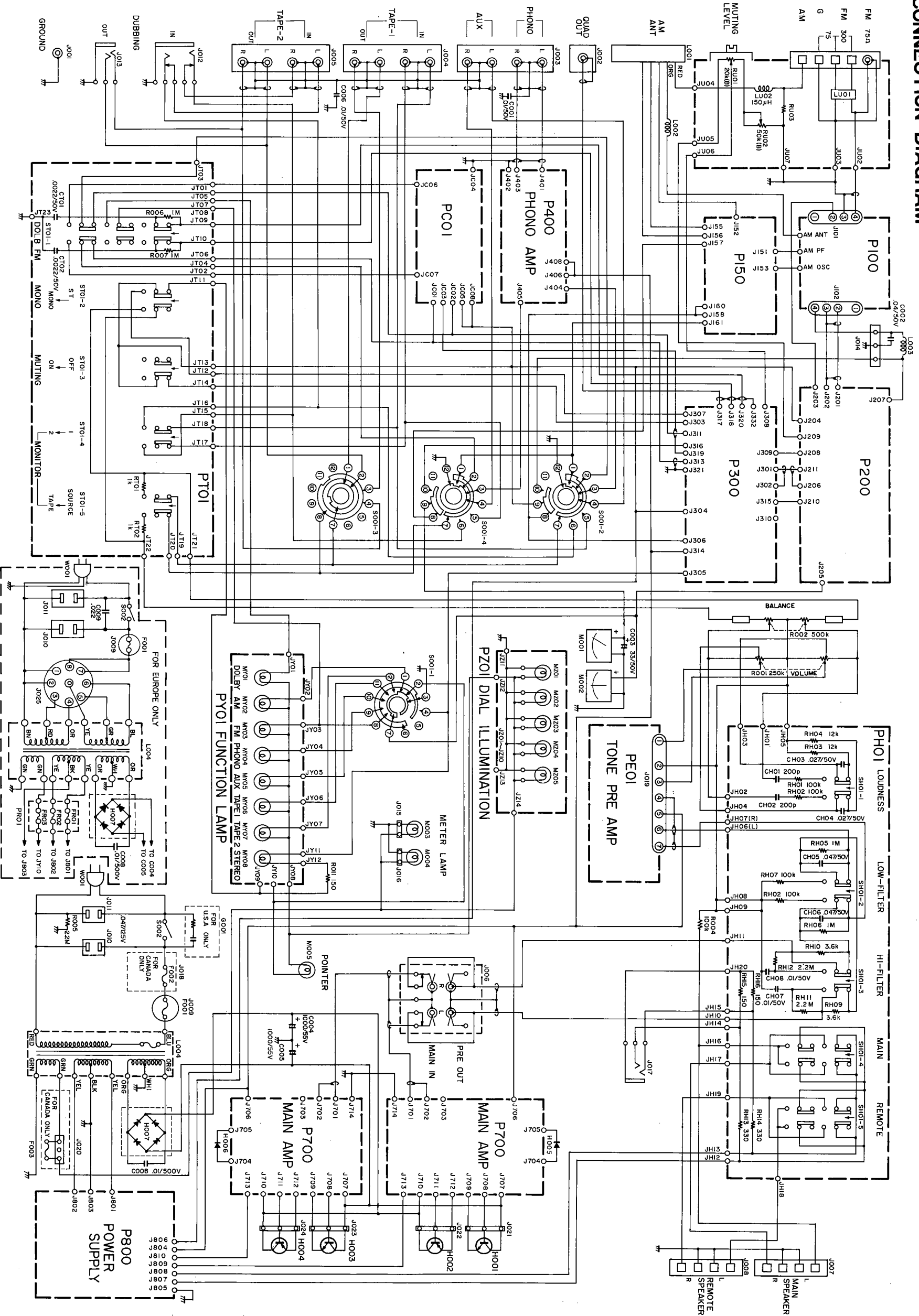
### 10.14 ANT. Muting Assembly (PU01) Schematic Diagram and Component Locations



# 11. BLOCK DIAGRAM

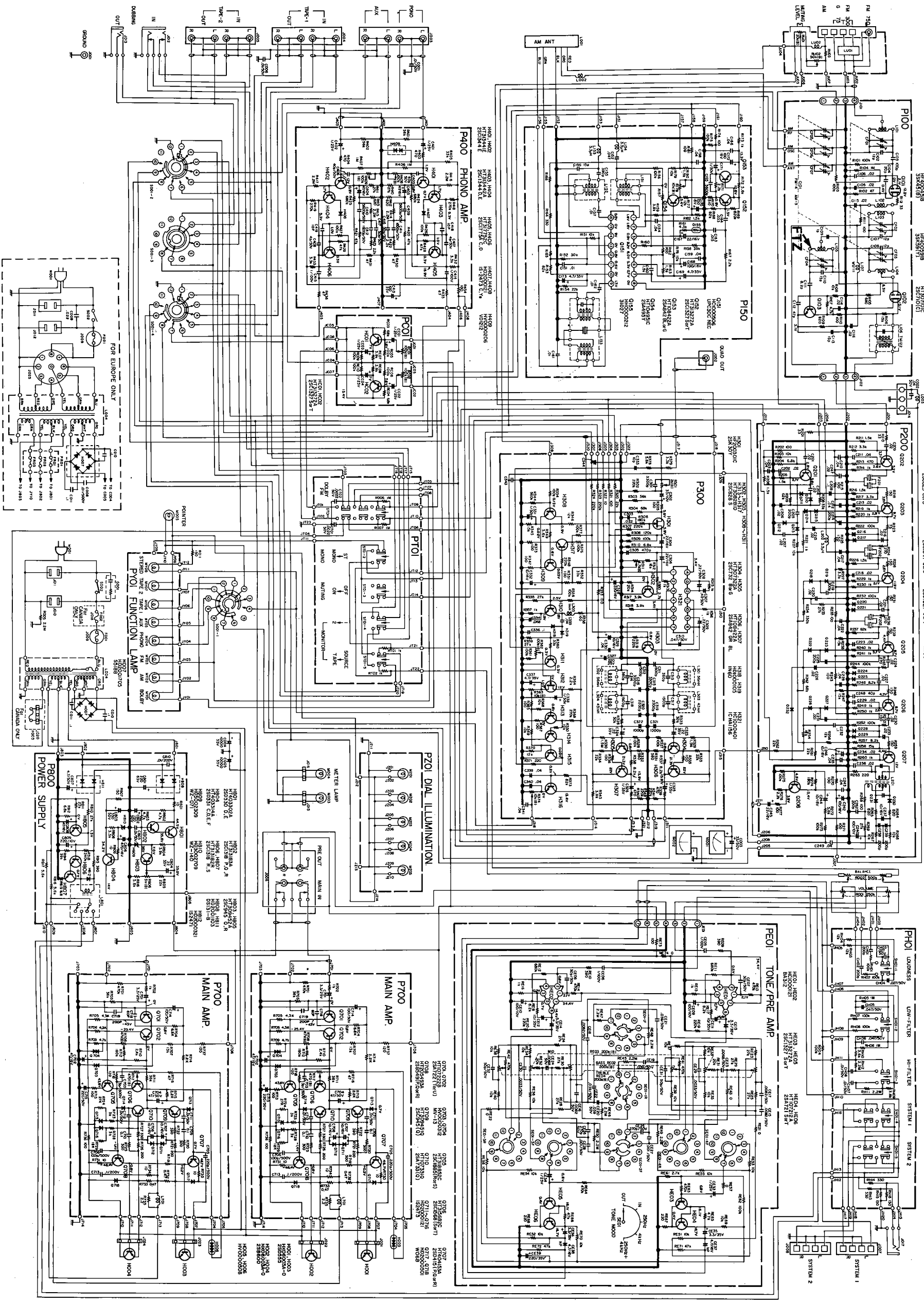


# 12. CONNECTION DIAGRAM

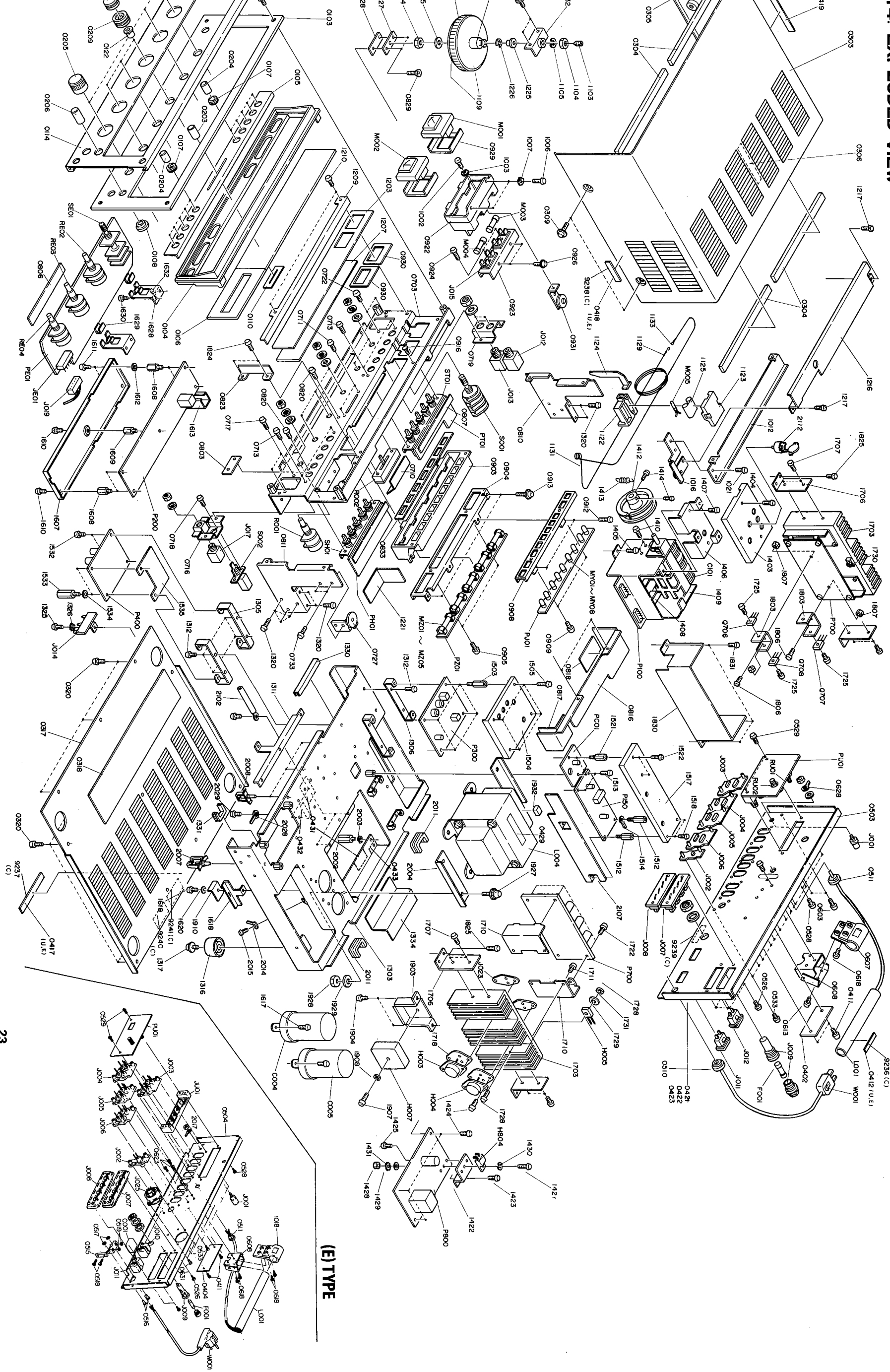


13. SCHEMATIC DIAGRAM

Model 2265



14. EXPLODED VIEW







U: U.S.A.  
C: Canada  
E: Europe

REF. DESIG.	Q'TY			PART NO.	DESCRIPTION
	U	C	E		
1630	4	4	4	51570306B0	P.H. Tapped Screw, P3 x 6
1632	1	1	1	62030039W0	Lug
1703	2	2	2	2928267012	Heatsink
1706	4	4	4	2928160030	Bracket
1707	8	8	8	51380306T0	P.H. Tapped Screw, P3 x 6
1710	4	4	4	2210160020	Bracket
1711	8	8	8	51100406S9	B.H.M. Screw, B4 x 6
1715	8	8	8	51100312E9	B.H.M. Screw, B3 x 12
1718	2	2	2	2818118060	Spacer
1722	8	8	8	51100306S9	B.H.M. Screw, B3 x 6
1728	2	2	2	51100312S9	B.H.M. Screw, B3 x 12
1729	2	2	2	54020301E0	Flat Washer
1730	2	2	2	531100303E9	Hexagon Nut
1731	2	2	2	54040302N0	Spring Washer
1803	4	4	4	2916267012	Heatsink
1804	2	2	2	1126005010	Clamper
1806	4	4	4	51100310B9	B.H.M. Screw, B3 x 10
1807	4	4	4	53110301E9	Hexagon Nut
1825	8	8	8	51570306B0	P.H. Tapped Screw, P3 x 6
1830	1	1	1	2916109030	Shield
1831	3	3	3	51570306B0	P.H. Tapped Screw, P3 x 6
1903	1	1	1	2928267020	Heatsink
1904	2	2	2	51570308B0	P.H. Tapped Screw, P3 x 8
1907	1	1	1	51100314E9	B.H.M. Screw, B3 x 14
1908	1	1	1	54040302N0	Spring Washer
1910	1	1	1	2928120010	Insulator
1927	4	4	4	51490514A9	B.H.M. Screw, B5 x 14
1928	4	4	4	53110501A9	Hexagon Nut
1929	4	4	4	54040602N0	Spring Washer
1932	1	1	1	2818056030	Buffer
2002	2	2	2	2928101022	Support
2003	2	2	2	54040402N0	Spring Washer
2004	2	2	2	2916160070	Bracket
2007	5	5	5	2886005020	Clamper
2008	5	5	5	2886005040	Clamper
2011	2	2	2	2889259010	Bushing
2014	3	3	3	62030039W0	Lug
2015	3	3	3	51570306B0	P.H. Tapped Screw, P3 x 6
2018	2	2	2	62030039W0	Lug
2021	1	1	1	1210005010	Clamper
2022	1	1	1	54050300R0	T.L. Washer or
2025	3	3	3	1210005010	Clamper
2028	1	1	1	62030039W0	Lug
2029	1	1	1	51570306B0	P.H. Tapped Screw, P3 x 6
2032	2	2	2	51570305B0	P.H. Tapped Screw, P3 x 5
2102	2	2	2	2871005010	Clamper
2103	1	1	1	2821005010	Clamper
2105	4	4	4	1382005030	Clamper
2107	1	1	1	2975109010	Shield
2110	1	1	1	2927160050	Bracket
2111	1	1	1	51570306B0	P.H. Tapped Screw, P3 x 6
2112	1	1	1	2908259010	Bushing
2117				2854160030	Bracket
2118	2			51570305B0	P.H. Tapped Screw, B3 x 5
2119	2			51100306S9	B.H.M. Screw, B3 x 6
2120				2917120020	Insulator
2130	1			51570306B0	P.H. Tapped Screw, P3 x 6
2202	1	1	1	2210801010	Packing Case, Inner
2203	1	1	1	2210801110	Packing Case, Outer

REF. DESIG.	Q'TY			PART NO.	DESCRIPTION
	U	C	E		
2211	1	1	1	2886803020	Cushion, Upper
2212	1	1	1	2886803030	Cushion, Lower
2216	1	1	1	9014838380	Polyethylen Bag, Set
2218	1	1	1	9013025010	Polyethylen Bag, Printed Matter
2219	1	1	1	9013025010	Polyethylen Bag, Accessories
2223	1	1	1	2864804010	Sleeve
2224				9560000042	Hang Tag
2226	1	1	1	2731821010	Silicagel
2228	1	1	1	2819056010	Buffer
2231	1	1	1	2918107130	Sheet
2302	4			9522815010	Serial No Card
2303		4		9523015120	Serial No Card
2304			4	9523015110	Serial No Card
2314		2		9510901020	Label
2327	1	1	1	ZA02000070	Ext. Antenna
2404	1			2210851010	Instructions, Set
2406		1	1	2210851310	Instructions, Set
2409		1		2886851100	Instructions, Flysheet
2416	1	1	1	2210856010	Schematic
2504	1			2577813010	Envelope
2505		1		2918813012	Envelope
2506			1	2818813010	Envelope
2511	1			2577851020	Instructions, Important
2512		1	1	2818851120	Instructions, Important
2516	1			2577854012	Guarantee Card
2517		1	1	9630000180	Guarantee Card
2521		1		9650000050	S Station Card
2525	1			2818854022	Guarantee Card
2526		1		2818854040	Guarantee Card
2532	1			2818851040	Instructions, Packing
2533		1	1	2818851140	Instructions, Packing
P100	1	1	1	YD29920010	P100 FM FRONT END BOARD
	1	1	1	AV01202070	P.W. Board, FM Front End
					Front End Assembly
R101	1	1	1	GD05104140	Resistor, 100kΩ ±5% ¼W
R102	1	1	1	GD05470140	Resistor, 47Ω ±5% ¼W
R103	1	1	1	GD05104140	Resistor, 100kΩ ±5% ¼W
R104	1	1	1	GD05105140	Resistor, 1MΩ ±5% ¼W
R105	1	1	1	GD05681140	Resistor, 680Ω ±5% ¼W
R106	1	1	1	GD05153140	Resistor, 15kΩ ±5% ¼W
R107	1	1	1	GD05472140	Resistor, 4.7kΩ ±5% ¼W
R108	1	1	1	GD05103140	Resistor, 10kΩ ±5% ¼W
R109	1	1	1	GD05821140	Resistor, 820Ω ±5% ¼W
R110	1	1	1	GD05101140	Resistor, 100Ω ±5% ¼W
R111	1	1	1	GD05101140	Resistor, 100Ω ±5% ¼W
R112	1	1	1	GD05330140	Resistor, 33Ω ±5% ¼W
C101	1	1	1	CA43700020	Variable Cap., FM-4 AM-3
C102	1	1	1	DD16120020	Ceramic Cap., 12pF ±10% CH
C103	1	1	1	DD16101010	Ceramic Cap., 100pF ±10% SL
C104	1	1	1	DD15200010	Ceramic Cap., 20pF ±5% CH
C105	1	1	1	DK18203030	Ceramic Cap., 0.02μF ±5%
C106	1	1	1	DK18203030	Ceramic Cap., 0.02μF ±5%
C107	1	1	1	DD16120020	Ceramic Cap., 12pF ±10% CH
C108	1	1	1	DD16120020	Ceramic Cap., 12pF ±10% CH
C109	1	1	1	DD10010020	Ceramic Cap., 1pF SL

U: U.S.A.  
C: Canada  
E: Europe

REF. DESIG.	Q'TY			PART NO.	DESCRIPTION
	U	C	E		
C110	1	1	1	DD16150040	Ceramic Cap., 15pF ±10% SH
C111	1	1	1	DD16082010	Ceramic Cap., 8.2pF ±10% CH
C112	1	1	1	DD16470020	Ceramic Cap., 47pF ±10% CH
C113	1	1	1	DD16150030	Ceramic Cap., 15pF ±10% CH
C114	1	1	1	DK18203030	Ceramic Cap., 0.02μF ±8%
C115	1	1	1	DK18203030	Ceramic Cap., 0.02μF ±8%
C116	1	1	1	DK18203030	Ceramic Cap., 0.02μF ±8%
Q101	1	1	1	HF400451B0	F.E.T., 3SK45 (B)
Q102	1	1	1	HF400591A0	F.E.T., 3SK59 (Y)
Q103	1	1	1	HT307101C0	Transistor, 2SC710 (C)
L106	1	1	1	LI70039010	I.F.T., TM122
L107	1	1	1	LC13920010	Choke Coil, WU111
J101	1	1	1	YJ06001150	Plug
J102	1	1	1	YJ06001150	Plug
<b>P150 AM TUNER BOARD</b>					
P150	1	1	1	YA29590310	P.W. Board, AM Tuner
	1	1	1	ZZ29590310	P.W. Board Assembly
P158	2	2	2	2933118020	Spacer
R151	1	1	1	RT05103140	Resistor, 10kΩ ±5% ¼W
R152	1	1	1	RT05303140	Resistor, 30kΩ ±5% ¼W
R153	1	1	1	RT05823140	Resistor, 82kΩ ±5% ¼W
R154	1	1	1	RT05223140	Resistor, 22kΩ ±5% ¼W
R156	1	1	1	RT05104140	Resistor, 100kΩ ±5% ¼W
R158	1	1	1	RT05393140	Resistor, 39kΩ ±5% ¼W
R159	1	1	1	RT05392140	Resistor, 3.9kΩ ±5% ¼W
R161	1	1	1	RT05432140	Resistor, 4.3kΩ ±5% ¼W
R162	1	1	1	RT05101140	Resistor, 100Ω ±5% ¼W
R163	1	1	1	RT05152140	Resistor, 1.5kΩ ±5% ¼W
R164	1	1	1	RT05331140	Resistor, 330Ω ±5% ¼W
R167	1	1	1	RT05222140	Resistor, 2.2kΩ ±5% ¼W
R168	1	1	1	RT05823140	Resistor, 82kΩ ±5% ¼W
R169	1	1	1	RT05624140	Resistor, 620kΩ ±5% ¼W
R170	1	1	1	RT05511140	Resistor, 510Ω ±5% ¼W
R171	1	1	1	RT05222140	Resistor, 2.2kΩ ±5% ¼W
R172	1	1	1	RT05562140	Resistor, 5.6kΩ ±5% ¼W
R173	1	1	1	RT05102140	Resistor, 1kΩ ±5% ¼W
R174	1	1	1	RT05101140	Resistor, 100Ω ±5% ¼W
R175	1	1	1	RT05104140	Resistor, 100kΩ ±5% ¼W
R176	1	1	1	RT05103140	Resistor, 10kΩ ±5% ¼W
R177	1	1	1	RT05123140	Resistor, 12kΩ ±5% ¼W
R178	1	1	1	RA01030250	Trimming Resistor, 10kΩ (B)
R179	1	1	1	RT05103140	Resistor, 10kΩ ±5% ¼W
R180	1	1	1	RT05152140	Resistor, 1.5kΩ ±5% ¼W
R181	1	1	1	RT05101140	Resistor, 100Ω ±5% ¼W
R182	1	1	1	RT05152140	Resistor, 1.5kΩ ±5% ¼W
C151	1	1	1	DK17103010	Ceramic Cap., 0.01μF ±20%
C152	1	1	1	DF17473050	Film Cap., 0.047μF ±20%
C154	1	1	1	DK18403020	Ceramic Cap., 0.04μF ±8%
C155	1	1	1	DF65391010	Film Cap., 390pF ±5%
C156	1	1	1	DD16150010	Ceramic Cap., 15pF ±10%
C157	1	1	1	DK17103010	Ceramic Cap., 0.01μF ±20%
C158	1	1	1	DK18403020	Ceramic Cap., 0.04μF ±8%
C159	1	1	1	DK18403020	Ceramic Cap., 0.04μF ±8%
C160	1	1	1	DK17103010	Ceramic Cap., 0.01μF ±20%
C161	1	1	1	DK17103010	Ceramic Cap., 0.01μF ±20%

REF. DESIG.	Q'TY			PART NO.	DESCRIPTION
	U	C	E		
C162	1	1	1	DK17103010	Ceramic Cap., 0.01μF ±20%
C163	1	1	1	DF16153050	Film Cap., 0.015μF ±10%
C164	1	1	1	DF16333050	Film Cap., 0.033μF ±10%
C165	1	1	1	DF17562050	Film Cap., 5600pF ±20%
C166	1	1	1	DK18403020	Ceramic Cap., 0.04μF ±8%
C167	1	1	1	EA22601690	Electrolytic Cap., 22μF 16V
C168	1	1	1	EA10701690	Electrolytic Cap., 100μF 16V
C169	1	1	1	EA47503590	Electrolytic Cap., 4.7μF 35V
C170	1	1	1	EA10701690	Electrolytic Cap., 100μF 16V
C171	1	1	1	EE10505040	Electrolytic Cap., 1μF 50V
C172	1	1	1	EA10701690	Electrolytic Cap., 100μF 16V
C173	1	1	1	EA47503590	Electrolytic Cap., 4.7μF 35V
Q151	1	1	1	HC10005060	IC, μPC30C
Q152	1	1	1	HT313272A0	Transistor, 2SC1327 S or T
Q153	1	1	1	HT108422A0	Transistor, 2SA842 BL or G
Q154	1	1	1	HT104951C0	Transistor, 2SA495 Y
Q155	1	1	1	HH00002120	Thermistor, 31D27
L151	1	1	1	LA10010190	RF Coil, AM
L152	1	1	1	LO10010500	OSC Coil, AM
L153	1	1	1	LI10280030	I.F.T.
L154	1	1	1	LC13320020	Chork Coil, 3.3μH
L155	1	1	1	LC13320020	Chork Coil, 3.3μH
J151	1	1	1	YP10001130	Plug
J152	1	1	1	YP10001130	Plug
J153	1	1	1	YP10001130	Plug
J155	1	1	1	YP10001130	Plug
J156	1	1	1	YP10001130	Plug
J157	1	1	1	YP10001130	Plug
J158	1	1	1	YP10001130	Plug
J160	1	1	1	YP10001130	Plug
J161	1	1	1	YP10001130	Plug
<b>P200 FM IF BOARD</b>					
P200	1	1	1	YD22100020	P.W. Board, FM IF
	1	1	1	ZZ22100020	P.W. Board Assembly
P208	2	2	2	2933118020	Spacer, R27
R201	1	1	1	GD05330140	Resistor, 33Ω ±10% ¼W
R202	1	1	1	RT05101140	Resistor, 100Ω ±10% ¼W
R203	1	1	1	GD05103140	Resistor, 10kΩ ±10% ¼W
R204	1	1	1	GD05682140	Resistor, 6.8kΩ ±10% ¼W
R205	1	1	1	GD05152140	Resistor, 1.5kΩ ±10% ¼W
R206	1	1	1	GD05152140	Resistor, 1.5kΩ ±10% ¼W
R207	1	1	1	GD05103140	Resistor, 10kΩ ±10% ¼W
R208	1	1	1	GD05333140	Resistor, 33kΩ ±10% ¼W
R209	1	1	1	RT05623140	Resistor, 62kΩ ±10% ¼W
R210	1	1	1	RT05330140	Resistor, 33Ω ±10% ¼W
R211	1	1	1	RT05152140	Resistor, 1.5kΩ ±10% ¼W
R212	1	1	1	RT05332140	Resistor, 3.3kΩ ±10% ¼W
R213	1	1	1	RT05471140	Resistor, 470Ω ±10% ¼W
R214	1	1	1	RT05621140	Resistor, 620Ω ±10% ¼W
R215	1	1	1	RT05101140	Resistor, 100Ω ±10% ¼W
R216	1	1	1	RT05471140	Resistor, 470Ω ±10% ¼W
R217	1	1	1	RT05102140	Resistor, 1kΩ ±10% ¼W
R218	1	1	1	RT05151140	Resistor, 150Ω ±10% ¼W
R219	1	1	1	RT05102140	Resistor, 1kΩ ±10% ¼W

U: U.S.A.  
C: Canada  
E: Europe

REF. DESIG.	Q'TY			PART NO.	DESCRIPTION
	U	C	E		
R220	1	1	1	RT05102140	Resistor, 1kΩ ±10% ¼W
R221	1	1	1	RT05102140	Resistor, 1kΩ ±10% ¼W
R222	1	1	1	RT05104140	Resistor, 100kΩ ±10% ¼W
R223	1	1	1	RT05750140	Resistor, 75Ω ±10% ¼W
R224	1	1	1	RT05271140	Resistor, 270Ω ±10% ¼W
R225	1	1	1	RT05750140	Resistor, 75Ω ±10% ¼W
R226	1	1	1	RT05152140	Resistor, 1.5kΩ ±10% ¼W
R227	1	1	1	RT05332140	Resistor, 3.3kΩ ±10% ¼W
R228	1	1	1	RT05151140	Resistor, 150Ω ±10% ¼W
R229	1	1	1	RT05102140	Resistor, 1kΩ ±10% ¼W
R230	1	1	1	RT05102140	Resistor, 1kΩ ±10% ¼W
R231	1	1	1	RT05151140	Resistor, 150Ω ±10% ¼W
R232	1	1	1	RT05104140	Resistor, 100kΩ ±10% ¼W
R233	1	1	1	RT05273140	Resistor, 27kΩ ±10% ¼W
R234	1	1	1	RT05334140	Resistor, 330kΩ ±5% ¼W
R235	1	1	1	RT05101140	Resistor, 100Ω ±5% ¼W
R236	1	1	1	RT05271140	Resistor, 270Ω ±5% ¼W
R237	1	1	1	RT05822140	Resistor, 82kΩ ±5% ¼W
R238	1	1	1	RT05153140	Resistor, 15kΩ ±5% ¼W
R239	1	1	1	RT05151140	Resistor, 150Ω ±5% ¼W
R240	1	1	1	RT05102140	Resistor, 1kΩ ±5% ¼W
R241	1	1	1	RT05102140	Resistor, 1kΩ ±5% ¼W
R242	1	1	1	RT05683140	Resistor, 68kΩ ±5% ¼W
R243	1	1	1	RT05101140	Resistor, 100Ω ±5% ¼W
R244	1	1	1	RT05104140	Resistor, 100kΩ ±5% ¼W
R245	1	1	1	RT05271140	Resistor, 270Ω ±5% ¼W
R246	1	1	1	RT05822140	Resistor, 8.2kΩ ±5% ¼W
R247	1	1	1	RT05153140	Resistor, 15kΩ ±5% ¼W
R248	1	1	1	RT05151140	Resistor, 150Ω ±5% ¼W
R249	1	1	1	RT05102140	Resistor, 1kΩ ±5% ¼W
R250	1	1	1	RT05102140	Resistor, 1kΩ ±5% ¼W
R252	1	1	1	RT05104140	Resistor, 100kΩ ±5% ¼W
R253	1	1	1	RT05151140	Resistor, 150Ω ±5% ¼W
R254	1	1	1	RT05183140	Resistor, 15kΩ ±5% ¼W
R256	1	1	1	RT05123140	Resistor, 18kΩ ±5% ¼W
R257	1	1	1	RT05822140	Resistor, 8.2kΩ ±5% ¼W
R258	1	1	1	RT05153140	Resistor, 15kΩ ±5% ¼W
R259	1	1	1	RT05151140	Resistor, 150Ω ±5% ¼W
R260	1	1	1	RT05102140	Resistor, 1kΩ ±5% ¼W
R261	1	1	1	RT05223140	Resistor, 22kΩ ±5% ¼W
R262	1	1	1	RT05223140	Resistor, 22kΩ ±5% ¼W
R263	1	1	1	RT05221140	Resistor, 220Ω ±5% ¼W
R264	1	1	1	RT05821140	Resistor, 820Ω ±5% ¼W
R265	1	1	1	RT05821140	Resistor, 820Ω ±5% ¼W
R266	1	1	1	RT05103140	Resistor, 10kΩ ±5% ¼W
R267	1	1	1	RT05103140	Resistor, 10kΩ ±5% ¼W
R268	1	1	1	RT05101140	Resistor, 100Ω ±5% ¼W
R269	1	1	1	RT05273140	Resistor, 27kΩ ±5% ¼W
R270	1	1	1	RT05101140	Resistor, 100Ω ±5% ¼W
R271	1	1	1	RT05101140	Resistor, 100Ω ±5% ¼W
R272	1	1	1	RT05562140	Resistor, 5.6kΩ ±5% ¼W
R273	1	1	1	RT05104140	Resistor, 100kΩ ±5% ¼W
R274	1	1	1	RT05184140	Resistor, 180kΩ ±5% ¼W
R275	1	1	1	RT05104140	Resistor, 100kΩ ±5% ¼W
R276	1	1	1	RT05222140	Resistor, 2.2kΩ ±5% ¼W
R277	1	1	1	RT05101140	Resistor, 100Ω ±5% ¼W
C201	1	1	1	DK18203020	Ceramic Cap., 0.02μF ±8%
C202	1	1	1	DK18203020	Ceramic Cap., 0.02μF ±8%

REF. DESIG.	Q'TY			PART NO.	DESCRIPTION
	U	C	E		
C203	1	1	1	DK18403020	Ceramic Cap., 0.04μF ±8%
C204	1	1	1	DK18203020	Ceramic Cap., 0.02μF ±8%
C205	1	1	1	DD16201010	Ceramic Cap., 200pF ±10%
C206	1	1	1	DK18203020	Ceramic Cap., 0.02μF ±8%
C207	1	1	1	DK18203020	Ceramic Cap., 0.02μF ±8%
C208	1	1	1	DK18104020	Ceramic Cap., 0.1 μF ±8%
C209	1	1	1	DK18203020	Ceramic Cap., 0.02μF ±8%
C210	1	1	1	DK18403020	Ceramic Cap., 0.04μF ±8%
C211	1	1	1	DK18403020	Ceramic Cap., 0.04μF ±8%
C212	1	1	1	DK18403020	Ceramic Cap., 0.04μF ±8%
C213	1	1	1	DK18203020	Ceramic Cap., 0.02μF ±8%
C214	1	1	1	DD16201010	Ceramic Cap., 200pF ±10%
C215	1	1	1	DK18203020	Ceramic Cap., 0.02μF ±8%
C216	1	1	1	DK18203020	Ceramic Cap., 0.02μF ±8%
C217	1	1	1	DK18403020	Ceramic Cap., 0.04μF ±8%
C218	1	1	1	DK18203020	Ceramic Cap., 0.02μF ±8%
C219	1	1	1	DD16201010	Ceramic Cap., 200pF ±10%
C220	1	1	1	DK18203020	Ceramic Cap., 0.02μF ±8%
C221	1	1	1	DK18203020	Ceramic Cap., 0.02μF ±8%
C222	1	1	1	DK18403020	Ceramic Cap., 0.04μF ±8%
C223	1	1	1	DK18203020	Ceramic Cap., 0.02μF ±8%
C224	1	1	1	DK18203020	Ceramic Cap., 0.02μF ±8%
C225	1	1	1	DD16201010	Ceramic Cap., 200pF ±10%
C226	1	1	1	DK18203020	Ceramic Cap., 0.02μF ±8%
C227	1	1	1	DK18203020	Ceramic Cap., 0.02μF ±8%
C228	1	1	1	DK18403010	Ceramic Cap., 0.04μF ±8%
C229	1	1	1	DK18203020	Ceramic Cap., 0.02μF ±8%
C230	1	1	1	DK18203020	Ceramic Cap., 0.02μF ±8%
C231	1	1	1	DK17102010	Ceramic Cap., 0.001μF ±8%
C232	1	1	1	DK18104020	Ceramic Cap., 0.1μF ±8%
C233	1	1	1	DK18203020	Ceramic Cap., 0.02μF ±8%
C234	1	1	1	DK18203020	Ceramic Cap., 0.02μF ±8%
C235	1	1	1	DK18403020	Ceramic Cap., 0.04μF ±8%
C236	1	1	1	DK18203020	Ceramic Cap., 0.02μF ±8%
C237	1	1	1	EA10601690	Electrolytic Cap., 10μF 16V
C238	1	1	1	DD16201010	Ceramic Cap., 100pF ±20%
C239	1	1	1	DD16201010	Ceramic Cap., 200pF ±20%
C240	1	1	1	EA10701090	Electrolytic Cap., 100μF 10V
C242	1	1	1	EA10701690	Electrolytic Cap., 100μF 16V
C243	1	1	1	DK18403020	Ceramic Cap., 0.04μF ±8%
C244	1	1	1	EA10601690	Electrolytic Cap., 10μF 16V
C245	1	1	1	EA22601690	Electrolytic Cap., 22μF 16V
C246	1	1	1	EA10601690	Electrolytic Cap., 10μF 16V
C247	1	1	1	DK18203020	Ceramic Cap., 0.02μF ±8%
C248	1	1	1	DD15400010	Ceramic Cap., 40pF ±5%
C249	1	1	1	DK18403020	Ceramic Cap., 0.04μF ±8%
C262	1	1	1	DD16201010	Ceramic Cap., 200pF ±20%
C263	1	1	1	DA12100010	Ceramic Cap., 10pF
F201	1	1	1	FP11070020	Ceramic Filter, SFE10.7MD-1
F202	1	1	1	FP11070020	Ceramic Filter, SFE10.7MD-1
F203	1	1	1	FP11070020	Ceramic Filter, SFE10.7MD-1
Q201	1	1	1	HT308292B0	Transistor, 2SC829 C or D
Q202	1	1	1	HT310472B0	Transistor, 2SC1047 C or D
Q203	1	1	1	HT310472B0	Transistor, 2SC1047 C or D
Q204	1	1	1	HT308292B0	Transistor, 2SC829 C or D
Q205	1	1	1	HT308292B0	Transistor, 2SC829 C or D
Q206	1	1	1	HT308292B0	Transistor, 2SC829 C or D
Q207	1	1	1	HT308292B0	Transistor, 2SC829 C or D
Q208	1	1	1	HT313272A0	Transistor, 2SC1327 S or T

REF. DESIG.	Q'TY			PART NO.	DESCRIPTION
	U	C	E		
Q210	1	1	1	HD10001050	Diode, IN60
Q211	1	1	1	HD10001050	Diode, IN60
Q212	1	1	1	HD10001050	Diode, IN60
Q213	1	1	1	HD10001050	Diode, IN60
Q214	1	1	1	HD10001050	Diode, IN60
Q215	1	1	1	HD10001050	Diode, IN60
Q216	1	1	1	HD20011050	Diode, IS1555
Q217	1	1	1	HD20011050	Diode, IS1555
Q218	1	1	1	HD10001050	Diode, IN60
Q219	1	1	1	HD10001050	Diode, IN60
Q220	1	1	1	HD20011050	Diode, IS1555
Q221	1	1	1	HD20011050	Diode, IS1555
Q222	1	1	1	HD10001050	Diode, IN60
Q223	1	1	1	HD10001050	Diode, IN60
Q224	1	1	1	HD20011050	Diode, IS1555
Q225	1	1	1	HD20011050	Diode, IS1555
Q226	1	1	1	HD10001050	Diode, IN60
Q227	1	1	1	HD10001050	Diode, IN60
Q228	1	1	1	HD20011050	Diode, IS1555
Q229	1	1	1	HD20011050	Diode, IS1555
Q230	1	1	1	HD10003020	Diode, 20A 90M
Q231	1	1	1	HD10003020	Diode, 20A 90M
Q232	1	1	1	HD10003020	Diode, 20A 90M
L201	1	1	1	LI14016230	IFT, FM
L202	1	1	1	LC13320020	Choke Coil, 3.3μH
J201					
J212	11	11	11	YP10001200	Plug
<b>P300 FM MPX. BOARD</b>					
P300	1	1	1	YD38900033	P.W. Board, FM MPX.
	1	1	1	ZZ22101033	P.W. Board Assembly
P308	2	2	2	2933118020	Spacer
R301	1	1	1	RA02020110	Trimming Resistor, 2kΩ B
R302	1	1	1	RT05224140	Resistor, 220kΩ ±5% ¼W
R303	1	1	1	RT05563140	Resistor, 56kΩ ±5% ¼W
R304	1	1	1	RT05683140	Resistor, 68kΩ ±5% ¼W
R305	1	1	1	RT05101140	Resistor, 100Ω ±5% ¼W
R306	1	1	1	RT05184140	Resistor, 180kΩ ±5% ¼W
R307	1	1	1	RT05224140	Resistor, 220kΩ ±5% ¼W
R308	1	1	1	RT05124140	Resistor, 120kΩ ±5% ¼W
R309	1	1	1	RT05104140	Resistor, 100kΩ ±5% ¼W
R310	1	1	1	RT05682140	Resistor, 6.8kΩ ±5% ¼W
R311	1	1	1	RA04720050	Trimming Resistor 4.7kΩ B
R312	1	1	1	RT05163140	Resistor, 16kΩ ±5% ¼W
R313	1	1	1	RT05102140	Resistor, 1kΩ ±5% ¼W
R314	1	1	1	RT05203140	Resistor, 20kΩ ±5% ¼W
R315	1	1	1	RT05102140	Resistor, 1kΩ ±5% ¼W
R316	1	1	1	RT05102140	Resistor, 1kΩ ±5% ¼W
R317	1	1	1	RT05392140	Resistor, 3.9kΩ ±5% ¼W
R318	1	1	1	RT05392140	Resistor, 3.9kΩ ±5% ¼W
R319	1	1	1	RT05224140	Resistor, 220kΩ ±5% ¼W
R320	1	1	1	RT05223140	Resistor, 22kΩ ±5% ¼W
R321	1	1	1	RT05701140	Resistor, 100Ω ±5% ¼W
R322	1	1	1	RT05100140	Resistor, 10Ω ±5% ¼W
R323	1	1	1	RT05224140	Resistor, 220kΩ ±5% ¼W

REF. DESIG.	Q'TY			PART NO.	DESCRIPTION
	U	C	E		
R324	1	1	1	RT05224140	Resistor, 220kΩ ±5% ¼W
R325	1	1	1	RT05303140	Resistor, 30kΩ ±5% ¼W
R326	1	1	1	RT05303140	Resistor, 30kΩ ±5% ¼W
R327	1	1	1	RT05104140	Resistor, 100kΩ ±5% ¼W
R328	1	1	1	RT05104140	Resistor, 100kΩ ±5% ¼W
R329	1	1	1	RT05155140	Resistor, 1.5MΩ ±5% ¼W
R330	1	1	1	RT05155140	Resistor, 1.5MΩ ±5% ¼W
R331	1	1	1	RT05511140	Resistor, 560Ω ±5% ¼W
R332	1	1	1	RT05511140	Resistor, 560Ω ±5% ¼W
R333	1	1	1	RT05223140	Resistor, 22kΩ ±5% ¼W
R334	1	1	1	RT05223140	Resistor, 22kΩ ±5% ¼W
R335	1	1	1	RT05101140	Resistor, 100Ω ±5% ¼W
R336	1	1	1	RT05101140	Resistor, 100Ω ±5% ¼W
R337	1	1	1	RT05822140	Resistor, 8.2kΩ ±5% ¼W
R338	1	1	1	RT05822140	Resistor, 8.2kΩ ±5% ¼W
R339	1	1	1	RT05471140	Resistor, 470Ω ±5% ¼W
R340	1	1	1	RT05471140	Resistor, 470Ω ±5% ¼W
R341	1	1	1	RT05224140	Resistor, 220kΩ ±5% ¼W
R342	1	1	1	RT05224140	Resistor, 220kΩ ±5% ¼W
R343	1	1	1	RT05392140	Resistor, 3.9kΩ ±5% ¼W
R344	1	1	1	RT05564140	Resistor, 560kΩ ±5% ¼W
R345	1	1	1	RT05153140	Resistor, 15kΩ ±5% ¼W
R346	1	1	1	RT05124140	Resistor, 120kΩ ±5% ¼W
R347	1	1	1	RT05101140	Resistor, 100Ω ±5% ¼W
R348	1	1	1	RT05224140	Resistor, 220kΩ ±5% ¼W
R349	1	1	1	RT05562140	Resistor, 5.6kΩ ±5% ¼W
R350	1	1	1	RT05103140	Resistor, 10kΩ ±5% ¼W
R351	1	1	1	RT05101140	Resistor, 100Ω ±5% ¼W
R352	1	1	1	RT05333140	Resistor, 33kΩ ±5% ¼W
R353	1	1	1	RT05101140	Resistor, 100Ω ±5% ¼W
R354	1	1	1	RT05104140	Resistor, 100kΩ ±5% ¼W
R355	1	1	1	RT05273140	Resistor, 27kΩ ±5% ¼W
R356	1	1	1	RT05104140	Resistor, 100kΩ ±5% ¼W
R357	1	1	1	RT05102140	Resistor, 1kΩ ±5% ¼W
R358	1	1	1	RT05101140	Resistor, 100Ω ±5% ¼W
R359	1	1	1	RT05273140	Resistor, 27kΩ ±5% ¼W
R360	1	1	1	RT05333140	Resistor, 33kΩ ±5% ¼W
R361	1	1	1	RT05104140	Resistor, 100kΩ ±5% ¼W
R362	1	1	1	RA01040180	Trimming Resistor 100kΩ B
R363	1	1	1	RA01030250	Trimming Resistor 10kΩ B
R364	1	1	1	RT05222140	Resistor, 2.2kΩ ±5% ¼W
R365	1	1	1	RT05101140	Resistor, 100Ω ±5% ¼W
R366	1	1	1	RT05103140	Resistor, 10kΩ ±5% ¼W
R367	1	1	1	RT05101140	Resistor, 100Ω ±5% ¼W
R368	1	1	1	RT05274140	Resistor, 270kΩ ±5% ¼W
R369	1	1	1	RT05103140	Resistor, 10kΩ ±5% ¼W
R370	1	1	1	RT05123140	Resistor, 12kΩ ±5% ¼W
R371	1	1	1	RT05221140	Resistor, 220Ω ±5% ¼W
R373	1	1	1	RT05823140	Resistor, 83kΩ ±5% ¼W
R374	1	1	1	RA01030250	Trimming Resistor 10kΩ B
R375	1	1	1	RT05101140	Resistor, 100Ω ±5% ¼W
R376	1	1	1	RT05104140	Resistor, 100kΩ ±5% ¼W
R377	1	1	1	RT05104140	Resistor, 100kΩ ±5% ¼W
R378	1	1	1	RT05562140	Resistor, 5.6kΩ ±5% ¼W
R379	1	1	1	RT05332140	Resistor, 3.3kΩ ±5% ¼W
R380	1	1	1	RT05272140	Resistor, 2.7kΩ ±5% ¼W
C301	1			DF16332050	Film Cap., 3300pF ±10%
C302	1	1	1	EA33601090	Electrolytic Cap., 33μF 10V

U: U.S.A.  
C: Canada  
E: Europe

REF. DESIG.	Q'TY			PART NO.	DESCRIPTION	REF. DESIG.	Q'TY			PART NO.	DESCRIPTION
	U	C	E				U	C	E		
C303	1	1	1	DF17223050	Film Cap., 0.022μF ±20%	H319	1	1	1	HD10001050	Diode, IN60
C304	1	1	1	EA22601690	Electrolytic Cap., 22μF 16V	H321	1	1	1	HC10004010	IC, IC HA1156
C305	1	1	1	DF55471010	Film Cap., 470pF ±5%	L301	1	1	1	LS10290040	MPX Coil, 56 mH
C306	1	1	1	EA22601690	Electrolytic Cap., 22μF 16V	L302	1	1	1	LS10290040	MPX Coil, 56 mH
C307	1	1	1	EQ47405010	Electrolytic Cap., 0.47μF ±20% 50V	L303	1	1	1	LS10290050	MPX Coil, 43 mH
C308	1	1	1	EQ22405010	Electrolytic Cap., 0.22μF ±20% 50V	L304	1	1	1	LS10290050	MPX Coil, 43 mH
C309	1	1	1	EQ22405010	Electrolytic Cap., 0.22μF ±20% 50V	L305	1	1	1	LC21050010	Choke Coil, 1 mH
C310	1	1	1	DF17473010	Film Cap., 0.047μF ±20%	J301	22	22	22	YP10001130	Plug
C311	1	1	1	DF15152050	Film Cap., 1500pF ±5%	J322					
C312	1	1	1	DF15152050	Film Cap., 1500pF ±5%						
C313	1	1	1	DD15361010	Ceramic Cap., 360pF ±5%						
C314	1	1	1	DD15361010	Ceramic Cap., 360pF ±5%						
C315	1	1	1	DF15332050	Film Cap., 3300pF ±5%						
C316	1	1	1	DF15332050	Film Cap., 3300pF ±5%	P400	1	1	1	YD28920084	P400 EOL. AMP. BOARD
C317	1	1	1	DF15152050	Film Cap., 1500pF ±5%		1	1	1	ZZ28920084	P.W. Board, EQL Amp.
C318	1	1	1	DF15152050	Film Cap., 1500pF ±5%						P.W. Board Assembly
C319	1	1	1	DF15222050	Film Cap., 2200pF ±5%	P408	2	2	2	2933118020	Spacer
C320	1	1	1	DF15222050	Film Cap., 2200pF ±5%	R401	1	1	1	RT05563140	Resistor, 56kΩ ±5% ¼W
C321	1	1	1	DF15102050	Film Cap., 1000pF ±5%	R402	1	1	1	RT05563140	Resistor, 56kΩ ±5% ¼W
C322	1	1	1	DF15102050	Film Cap., 1000pF ±5%	R403	1	1	1	RT05471140	Resistor, 470Ω ±5% ¼W
C323	1	1	1	EV22403510	Electrolytic Cap., 0.22μF ±20% 35V	R404	1	1	1	RT05471140	Resistor, 470Ω ±5% ¼W
C324	1	1	1	EV22403510	Electrolytic Cap., 0.22μF ±20% 35V	R405	1	1	1	RN05333140	Resistor, 33kΩ ±5% ¼W
C325	1	1	1	EV10503520	Electrolytic Cap., 1μF ±20% 35V	R406	1	1	1	RN05105140	Resistor, 1MΩ ±5% ¼W
C326	1	1	1	EV10503520	Electrolytic Cap., 1μF ±20% 35V	R407	1	1	1	RN05105140	Resistor, 1MΩ ±5% ¼W
C327	1	1	1	EA22702590	Electrolytic Cap., 220μF 25V	R408	1	1	1	RA01040150	Trimming Resistor 100kΩ ±30% B
C328	1	1	1	EA22701690	Electrolytic Cap., 220μF 16V	R409	1	1	1	RA01040150	Trimming Resistor 100kΩ ±30% B
C329	1	1	1	EA10601690	Electrolytic Cap., 10μF 16V	R410	1	1	1	RN05273140	Resistor, 27kΩ ±5% ¼W
C330	1	1	1	DK18403020	Ceramic Cap., 0.04μF ±30%	R411	1	1	1	RN05273140	Resistor, 27kΩ ±5% ¼W
C331	1	1	1	EA10505090	Electrolytic Cap., 1μF 50V	R412	1	1	1	RT05621140	Resistor, 620Ω ±5% ¼W
C332	1	1	1	EA10601690	Electrolytic Cap., 10μF 16V	R413	1	1	1	RT05621140	Resistor, 620Ω ±5% ¼W
C333	1	1	1	DD12100010	Ceramic Cap., 10P ±10%	R414	1	1	1	RT05225140	Resistor, 2.2MΩ ±5% ¼W
C334	1	1	1	DF16683010	Film Cap., 0.068μF ±10%	R415	1	1	1	RT05225140	Resistor, 2.2MΩ ±5% ¼W
C335	1	1	1	DF17403010	Film Cap., 0.04μF ±20%	R416	1	1	1	RN05225140	Resistor, 2.2MΩ ±5% ¼W
C336	1	1	1	DK18104020	Ceramic Cap., 0.1μF ±30%	R417	1	1	1	RN05225140	Resistor, 2.2MΩ ±5% ¼W
C337	1	1	1	EA47503590	Electrolytic Cap., 4.7μF 35V	R418	1	1	1	RN05274140	Resistor, 270kΩ ±5% ¼W
C338	1	1	1	EA10505090	Electrolytic Cap., 1μF 50V	R419	1	1	1	RN05274140	Resistor, 270kΩ ±5% ¼W
C339	1	1	1	DK18403020	Ceramic Cap., 0.04μF ±30%	R420	1	1	1	RT05473140	Resistor, 47kΩ ±5% ¼W
C340	1	1	1	DK18403020	Ceramic Cap., 0.04μF ±30%	R421	1	1	1	RT05473140	Resistor, 47kΩ ±5% ¼W
C341	1	1	1	DK18403020	Ceramic Cap., 0.04μF ±30%	R422	1	1	1	RT05222140	Resistor, 2.2kΩ ±5% ¼W
C343	1	1	1	DF17104020	Film Cap., 0.04μF ±20%	R423	1	1	1	RT05222140	Resistor, 2.2kΩ ±5% ¼W
C344	1	1	1	DK18203020	Ceramic Cap., 0.04μF ±30%	R424	1	1	1	RN05684140	Resistor, 680kΩ ±5% ¼W
H301	1	1	1	HF200301C0	FET, 2SK 30Y	R425	1	1	1	RN05684140	Resistor, 680kΩ ±5% ¼W
H302	1	1	1	HT308281D0	Transistor, 2SC 828S	R426	1	1	1	RN05104140	Resistor, 100kΩ ±5% ¼W
H303	1	1	1	HT308281D0	Transistor, 2SC 828S	R427	1	1	1	RN05104140	Resistor, 100kΩ ±5% ¼W
H304	1	1	1	HT307322A0	Transistor, 2SC 732 B or G	R428	1	1	1	RN05473140	Resistor, 47kΩ ±5% ¼W
H305	1	1	1	HT307322A0	Transistor, 2SC 732 B or G	R429	1	1	1	RN05473140	Resistor, 47kΩ ±5% ¼W
H306	1	1	1	HT108422A0	Transistor, 2SA 842 GR, BL	R430	1	1	1	RT05470140	Resistor, 47Ω ±5% ¼W
H307	1	1	1	HT108422A0	Transistor, 2SA 842 GR, BL	R431	1	1	1	RT05470140	Resistor, 47Ω ±5% ¼W
H308	1	1	1	HT308281D0	Transistor, 2SC 828S	R432	1	1	1	RN05332140	Resistor, 3.3kΩ ±5% ¼W
H309	1	1	1	HT308281D0	Transistor, 2SC 828S	R433	1	1	1	RN05332140	Resistor, 3.3kΩ ±5% ¼W
H310	1	1	1	HT308281D0	Transistor, 2SC 828S	R434	1	1	1	RT05101140	Resistor, 100Ω ±5% ¼W
H311	1	1	1	HT308281D0	Transistor, 2SC 828S	R435	1	1	1	RT05470140	Resistor, 47Ω ±5% ¼W
H312	1	1	1	HF200300A0	FET, 2SC 828S	R436	1	1	1	RT05470140	Resistor, 47Ω ±5% ¼W
H313	1	1	1	HT308281D0	Transistor, 2SC 828S	C401	1	1	1	EV10502560	Electrolytic Cap., 1μF ±20% 25V
H314	1	1	1	HT308281D0	Transistor, 2SC 828S	C402	1	1	1	EV10502560	Electrolytic Cap., 1μF ±20% 25V
H315	1	1	1	HT308281D0	Transistor, 2SC 828S	C403	1	1	1	EE47601640	Electrolytic Cap., 47μF ±20% 16V
H316	1	1	1	HT308281D0	Transistor, 2SC 828S	C404	1	1	1	EE47601640	Electrolytic Cap., 47μF ±20% 16V
H317	1	1	1	HT308281D0	Transistor, 2SC 828S	C405	1	1	1	DD15400040	Ceramic Cap., 40pF ±50% 50V
H318	1	1	1	HD10001050	Diode, IN60						

REF. DESIG.	Q'TY			PART NO.	DESCRIPTION
	U	C	E		
C406	1	1	1	DD15400040	Ceramic Cap., 40pF ±50% 50V
C407	1	1	1	DD11040010	Ceramic Cap., 4pF ±0.5% 50V
C408	1	1	1	DD11040010	Ceramic Cap., 4pF ±5% 50V
C409	1	1	1	DF65562010	Film Cap., 5600pF ±5% 50V
C410	1	1	1	DF65562010	Film Cap., 5600pF ±5% 50V
C411	1	1	1	DF65162010	Film Cap., 1600pF ±5% 50V
C412	1	1	1	DF65162010	Film Cap., 1600pF ±5% 50V
C413	1	1	1	ED10703510	Electrolytic Cap., 100µF 35V
C414	1	1	1	DF16105500	Film Cap., 1µF ±10% 100V
C415	1	1	1	DF16105500	Film Cap., 1µF ±10% 100V
C416	1	1	1	DD16500010	Ceramic Cap., 50pF ±10% 50V
C417	1	1	1	DD16500010	Ceramic Cap., 50pF ±10% 50V
H401	1	1	1	HT313441E0	Transistor, 2SC 1344E
H402	1	1	1	HT313441E0	Transistor, 2SC 1344E
H403	1	1	1	HT313442A0	Transistor, 2SC 1344D, E
H404	1	1	1	HT313442A0	Transistor, 2SC 1344D, E
H405	1	1	1	HT317752C0	Transistor, 2SC 1775A (C,D)
H406	1	1	1	HT317752C0	Transistor, 2SC 1775A (C,D)
H407	1	1	1	HD20001210	Diode, 1S-2473
H408	1	1	1	HD20001210	Diode, 1S-2473
H409	1	1	1	HV00002060	Varistor, VD1212
J401					
J408	8	8	8	YP10001130	Plug
<b>P700 MAIN AMP. BOARD</b>					
P700	2	2	2	YD22102010	P.W. Board, Main Amp.
	2	2	2	ZZ22102010	P.W. Board Assembly
P708	16	16	16	2933118020	Spacer
R701	2	2	2	RT05474140	Resistor, 470kΩ ±5% ¼W
R702	2	2	2	RT05102140	Resistor, 1kΩ ±5% ¼W
R703	2	2	2	RT05363140	Resistor, 36kΩ ±5% ¼W
R704	2	2	2	RT05082140	Resistor, 6.8kΩ ±5% ¼W
R705	2	2	2	RT05432140	Resistor, 4.3kΩ ±5% ¼W
R706	2	2	2	RT05432140	Resistor, 4.3kΩ ±5% ¼W
R707	2	2	2	RT05133140	Resistor, 13kΩ ±5% ¼W
R708	2	2	2	RA04720060	Resistor, 4.7kΩ (B)
R709	2	2	2	RT05472140	Resistor, 4.7kΩ ±5% ¼W
R710	2	2	2	RT05242140	Resistor, 2.4kΩ ±5% ¼W
R711	2	2	2	RT05363140	Resistor, 36kΩ ±5% ¼W
R712	2	2	2	RT05134140	Resistor, 130kΩ ±5% ¼W
R713	2	2	2	GF05101140	Resistor, 100Ω ±5% ¼W
R714	2	2	2	GF05222140	Resistor, 2.2kΩ ±5% ¼W
R715	2	2	2	RT05472140	Resistor, 2.2kΩ ±5% ¼W
R716	2	2	2	RT05470140	Resistor, 47Ω ±5% ¼W
R717	2	2	2	RA02220080	Resistor, 2.2kΩ (B)
R718	2	2	2	RT05121140	Resistor, 120Ω ±5% ¼W
R719	2	2	2	GF05301120	Resistor, 300Ω ±5% ¼W
R720	2	2	2	GF05301140	Resistor, 300Ω ±5% ¼W
R721	2	2	2	GF05201140	Resistor, 200Ω ±5% ¼W
R722	2	2	2	GF05391140	Resistor, 390Ω ±5% ¼W
R723	2	2	2	GF05302140	Resistor, 3kΩ ±5% ¼W
R724	2	2	2	GF05273140	Resistor, 27kΩ ±5% ¼W
R725	2	2	2	GF05301140	Resistor, 300Ω ±5% ¼W
R726	2	2	2	GF05201140	Resistor, 200Ω ±5% ¼W
R727	2	2	2	GF05331140	Resistor, 330Ω ±5% ¼W
R728	2	2	2	GF05302140	Resistor, 3kΩ ±5% ¼W

REF. DESIG.	Q'TY			PART NO.	DESCRIPTION
	U	C	E		
R729	2	2	2	RT05183140	Resistor, 18kΩ ±5% ¼W
R730	2	2	2	GF05100140	Resistor, 10Ω ±5% ¼W
R731	2	2	2	GF05100140	Resistor, 10Ω ±5% ¼W
R732	2	2	2	GW10472050	Resistor, 106Ω ±10% 5W
R733	2	2	2	GW10472050	Resistor, 106Ω ±10% 5W
R734	2	2	2	GJ05100020	Resistor, 10Ω ±5% 2W
R735	2	2	2	RC10022120	Resistor, 2.2Ω ±10% ½W
R736	2	2	2	GF05101140	Resistor, 100Ω ±5% ¼W
R737	2	2	2	GF05121140	Resistor, 120Ω ±5% ¼W
C701	2	2	2	EE33502540	Electrolytic Cap., 3.3µF 25V
C702	2	2	2	EE47601640	Electrolytic Cap., 47µF 16V
C703	2	2	2	DD10030500	Ceramic Cap., 3pF±0.25% 500V
C704	2	2	2	EA47605090	Electrolytic Cap., 47µF 50V
C705	2	2	2	DK16221510	Ceramic Cap., 220pF ±10% 500V
C706	2	2	2	DK16101500	Ceramic Cap., 100pF ±10% 500V
C707	2	2	2	EE10601640	Electrolytic Cap., 10µF 16V
C708	2	2	2	EE10601640	Electrolytic Cap., 10µF 16V
C709	2	2	2	AF15104050	Film Cap., 0.1µF 50V
C710	2	2	2	AF15104050	Film Cap., 0.1µF 50V
C711	2	2	2	DF16103050	Film Cap., 0.01µF ±10% 50V
C712	2	2	2	DF16103050	Film Cap., 0.01µF ±10% 50V
C713	2	2	2	DF17104520	Film Cap., 0.1µF ±20% 200V
C714	2	2	2	EA10705090	Electrolytic Cap., 100µF 50V
C715	2	2	2	EA22705090	Electrolytic Cap., 220µF 50V
C718	2	2	2	AA10600010	Ceramic Cap., 60pF ±10% 50V V
C719	2	2	2	AA10201010	Ceramic Cap., 200pF ±10% 50V V
Q701	2	2	2	HT107222B0	Transistor, 2SA722 T or U
Q702	2	2	2	HT107222B0	Transistor, 2SA722 T or U
Q703	2	2	2	HV00003120	Varistor, MV-13
Q704	2	2	2	HV00003120	Varistor, MV-13
Q705	2	2	2	HT318852C0	Transistor, 2SC1885 R or S
Q706	2	2	2	HT315682C0	Transistor, 2SC1568 S or T
Q707	2	2	2	HT404153A0	Transistor, 2SD415 P,Q or R
Q708	2	2	2	HT205493A0	Transistor, 2SB549 P,Q or R
Q709	2	2	2	HT309451Q0	Transistor, 2SC945 (Q)
Q710	2	2	2	HT107331Q0	Transistor, 2SA733 (Q)
Q711	2	2	2	HD20001210	Diode, IS2473
Q712	2	2	2	HD20001210	Diode, IS2473
Q713	2	2	2	HD20001210	Diode, IS2473
Q714	2	2	2	HD20001210	Diode, IS2473
Q715	2	2	2	HD20001210	Diode, IS2473
Q716	2	2	2	HD20001210	Diode, IS2473
Q717	2	2	2	HD20005010	Diode, W06B
Q718	2	2	2	HD20005010	Diode, W06B
L701	2	2	2	LC22620010	Coil
J701					
J716	16	16	16	YP10001130	Plug
<b>P800 POWER SUPPLY BOARD</b>					
R800	1	1	1	YD29160020	P.W. Board, Power Supply
	1	1	1	ZZ29283020	P.W. Board Assembly
R801	1	1	1	GJ05100010	Resistor, 10Ω ±5% 1W
R802	1	1	1	RT05472140	Resistor, 3.7kΩ ±5% ¼W
R803	1	1	1	RT05472140	Resistor, 4.7kΩ ±5% ¼W

U: U.S.A.  
C: Canada  
E: Europe

REF. DESIG.	Q'TY			PART NO.	DESCRIPTION
	U	C	E		
R804	1	1	1	RT05392140	Resistor, 3.9kΩ ±5% ¼W
R805	1	1	1	RT05223140	Resistor, 22kΩ ±5% ¼W
R806	1	1	1	RA05020130	Trimming Resistor, 5kΩ (B)
R807	1	1	1	GS10151050	Resistor, 150Ω ±10% 5W
R808	1	1	1	RT05332140	Resistor, 3.3kΩ ±5% ¼W
R809	1	1	1	RT05100140	Resistor, 10Ω ±5% ¼W
R810	1	1	1	RT05273140	Resistor, 27kΩ ±5% ¼W
R811	1	1	1	RT05223140	Resistor, 22kΩ ±5% ¼W
R812	1	1	1	RT05682140	Resistor, 6.8kΩ ±5% ¼W
R813	1	1	1	RT05244140	Resistor, 240kΩ ±5% ¼W
R814	1	1	1	RT05393140	Resistor, 39kΩ ±5% ¼W
R815	1	1	1	GU05391120	Resistor, 390Ω ±5% ½W
R816	1	1	1	GU05562120	Resistor, 5.6kΩ ±5% ½W
R817	1	1	1	GU05562120	Resistor, 5.6kΩ ±5% ½W
R818	1	1	1	GU05562140	Resistor, 5.6kΩ ±5% ¼W
R819	1	1	1	RT05068140	Resistor, 6.8Ω ±5% ¼W
C801	1	1	1	EA22706310	Electrolytic Cap., 220μF 63V
C802	1	1	1	EA10705090	Electrolytic Cap., 100μF 50V
C803	1	1	1	DF17103050	Film Cap., 0.01μF 50V
C804	1	1	1	EA22603590	Electrolytic Cap., 22μF 35V
C805	1	1	1	EA33705090	Electrolytic Cap., 330μF 50V
C806	1	1	1	EA47701690	Electrolytic Cap., 470μF 16V
C807	1	1	1	EA47505090	Electrolytic Cap., 4.7μF 50V
C808	1	1	1	EA47601690	Electrolytic Cap., 47μF 16V
C809	1	1	1	EA22701090	Electrolytic Cap., 220μF 10V
C810	1	1	1	DK18103510	Ceramic Cap., 0.01μF 200V
H801	1	1	1	HT403302A0	Transistor, 2SD330 D, E
H802	1	1	1	HT313183A0	Transistor, 2SC1318 P, O, R
H803	1	1	1	HT309452A0	Transistor, 2SC945 Q, R
H804	1	1	1	HT403314A0	Transistor, 2SD331 C, D, E, F
H805	1	1	1	HT309452A0	Transistor, 2SC945 Q, R
H806	1	1	1	HT313182R0	Transistor, 2SC1318 R, S
H807	1	1	1	HT313182R0	Transistor, 2SC1318 R, S
H808	1	1	1	HD20011030	Diode, DS131-B
H809	1	1	1	HD30023090	Diode, WZ-071
H810	1	1	1	HD30027090	Diode, WZ-140
H811	1	1	1	HD20011030	Diode, DS131-B
H812	1	1	1	HD20003210	Diode, IS2471
L801	1	1	1	LY20240090	Relay
J801	?	10	10	YP10001130	Plug
J810					
P809	2	2	2	2933118010	Spacer
P808	10	10	10	2933118020	Spacer
PE01	1	1	1	YD29170022	PE01 PRE-TONE AMP. BOARD
	1	1	1	ZZ29282020	P.W. Board, Pre-Tone Amp.
					P.W. Board Assembly
PE08	2	2	2	2933118020	Spacer
RE02	1	1	1	RD02040010	Variable Resistor, 200kΩ (B)
RE03	1	1	1	RD02040010	Variable Resistor, 200kΩ (B)
RE04	1	1	1	RD02040010	Variable Resistor, 200kΩ (B)
RE09	1	1	1	RT05391140	Resistor, 390Ω ±5% ¼W
RE10	1	1	1	RT05391140	Resistor, 390Ω ±5% ¼W
RE11	1	1	1	RN05684140	Resistor, 680kΩ ±5% ¼W
RE12	1	1	1	RN05684140	Resistor, 680kΩ ±5% ¼W

REF. DESIG.	Q'TY			PART NO.	DESCRIPTION
	U	C	E		
RE13	1	1	1	RN05474140	Resistor, 470kΩ ±5% ¼W
RE14	1	1	1	RN05474140	Resistor, 470kΩ ±5% ¼W
RE15	1	1	1	RT05102140	Resistor, 1kΩ ±5% ¼W
RE16	1	1	1	RT05102140	Resistor, 1kΩ ±5% ¼W
RE17	1	1	1	RT05822140	Resistor, 8.2kΩ ±5% ¼W
RE18	1	1	1	RT05822140	Resistor, 8.2kΩ ±5% ¼W
RE19	1	1	1	RT05224140	Resistor, 220kΩ ±5% ¼W
RE20	1	1	1	RT05224140	Resistor, 220kΩ ±5% ¼W
RE21	1	1	1	RC00000120	Resistor, 0Ω ±5% ¼W
RE22	1	1	1	RC00000120	Resistor, 0Ω ±5% ¼W
RE23	1	1	1	RT05273140	Resistor, 27kΩ ±5% ¼W
RE24	1	1	1	RT05273140	Resistor, 27kΩ ±5% ¼W
RE25	1	1	1	RT05273140	Resistor, 27kΩ ±5% ¼W
RE26	1	1	1	RT05273140	Resistor, 27kΩ ±5% ¼W
RE29	1	1	1	RT05273140	Resistor, 27kΩ ±5% ¼W
RE30	1	1	1	RT05273140	Resistor, 27kΩ ±5% ¼W
RE31	1	1	1	RT05203140	Resistor, 20kΩ ±5% ¼W
RE32	1	1	1	RT05203140	Resistor, 20kΩ ±5% ¼W
RE33	1	1	1	RT05103140	Resistor, 10kΩ ±5% ¼W
RE34	1	1	1	RT05103140	Resistor, 10kΩ ±5% ¼W
RE35	1	1	1	RT05103140	Resistor, 10kΩ ±5% ¼W
RE36	1	1	1	RT05103140	Resistor, 10kΩ ±5% ¼W
RE37	1	1	1	RT05103140	Resistor, 10kΩ ±5% ¼W
RE38	1	1	1	RT05103140	Resistor, 10kΩ ±5% ¼W
RE39	1	1	1	RT05103140	Resistor, 10kΩ ±5% ¼W
RE40	1	1	1	RT05103140	Resistor, 10kΩ ±5% ¼W
RE41	1	1	1	RT05474140	Resistor, 470kΩ ±5% ¼W
RE42	1	1	1	RT05474140	Resistor, 470kΩ ±5% ¼W
RE43	1	1	1	RC00000120	Resistor, 0Ω ±5% ¼W
RE45	1	1	1	RT05225140	Resistor, 2.2MΩ ±5% ¼W
RE46	1	1	1	RT05225140	Resistor, 2.2MΩ ±5% ¼W
RE47	1	1	1	RT05225140	Resistor, 2.2MΩ ±5% ¼W
RE48	1	1	1	RT05225140	Resistor, 2.2MΩ ±5% ¼W
RE49	1	1	1	RT05225140	Resistor, 2.2MΩ ±5% ¼W
RE50	1	1	1	RT05225140	Resistor, 2.2MΩ ±5% ¼W
RE51	1	1	1	RT05103140	Resistor, 10kΩ ±5% ¼W
RE52	1	1	1	RT05103140	Resistor, 10kΩ ±5% ¼W
RE53	1	1	1	RT05103140	Resistor, 10kΩ ±5% ¼W
RE54	1	1	1	RT05103140	Resistor, 10kΩ ±5% ¼W
RE55	1	1	1	RT05103140	Resistor, 10kΩ ±5% ¼W
RE56	1	1	1	RT05103140	Resistor, 10kΩ ±5% ¼W
RE57	1	1	1	RC00000120	Resistor, 0Ω ±5% ¼W
RE61	1	1	1	RT05272140	Resistor, 27kΩ ±5% ¼W
RE62	1	1	1	RT05104140	Resistor, 100kΩ ±5% ¼W
RE63	1	1	1	RT05474140	Resistor, 470kΩ ±5% ¼W
RE64	1	1	1	RT05474140	Resistor, 470kΩ ±5% ¼W
RE65	1	1	1	RT05473140	Resistor, 47kΩ ±5% ¼W
RE66	1	1	1	RT05473140	Resistor, 47kΩ ±5% ¼W
RE67	1	1	1	RT05221140	Resistor, 220Ω ±5% ¼W
RE68	1	1	1	RT05221140	Resistor, 220Ω ±5% ¼W
RE69	1	1	1	RT05103140	Resistor, 10Ω ±5% ¼W
RE70	1	1	1	RT05103140	Resistor, 10kΩ ±5% ¼W
RE71	1	1	1	RT05473140	Resistor, 47kΩ ±5% ¼W
RE72	1	1	1	RT05473140	Resistor, 47kΩ ±5% ¼W
RE73	1	1	1	RT05101140	Resistor, 100Ω ±5% ¼W
RE74	1	1	1	RC00000120	Resistor, 0Ω ±5% ¼W
CE05	1	1	1	DF16105500	Film Cap., 1μF ±10% 100V
CE06	1	1	1	DF16105500	Film Cap., 1μF ±10% 100V

REF. DESIG.	Q'TY			PART NO.	DESCRIPTION
	U	C	E		
CE07	1	1	1	DD15300010	Ceramic Cap., 30pF ±5% 50V
CE08	1	1	1	DD15300010	Ceramic Cap., 30pF ±5% 50V
CE09	1	1	1	EA10701090	Electrolytic Cap., 100μF $\pm\frac{5}{10}\%$ 10V
CE10	1	1	1	EA10701090	Electrolytic Cap., 100μF $\pm\frac{5}{10}\%$ 10V
CE11	1	1	1	EA10603590	Electrolytic Cap., 10μF 35V
CE12	1	1	1	EA10603590	Electrolytic Cap., 10μF 35V
CE13	1	1	1	EV33503560	Electrolytic Cap., 3.3μF ±20% 35V
CE14	1	1	1	EV33503560	Electrolytic Cap., 3.3μF ±20% 35V
CE15	1	1	1	DF15822050	Film Cap., 0.0082μF ±5% 50V
CE16	1	1	1	DF15822050	Film Cap., 0.0082μF ±5% 50V
CE17	1	1	1	DF15822050	Film Cap., 0.0082μF ±5% 50V
CE18	1	1	1	DF15822050	Film Cap., 0.0082μF ±5% 50V
CE19	1	1	1	DF15393010	Film Cap., 0.039μF ±5% 50V
CE20	1	1	1	DF15393010	Film Cap., 0.039μF ±5% 50V
CE21	1	1	1	DF15393010	Film Cap., 0.039μF ±5% 50V
CE22	1	1	1	DF15393010	Film Cap., 0.039μF ±5% 50V
CE23	1	1	1	DF16682050	Film Cap., 0.0068μF ±10% 50V
CE24	1	1	1	DF16682050	Film Cap., 0.0068μF ±10% 50V
CE25	1	1	1	DF65271510	Film Cap., 270pF ±5% 50V
CE26	1	1	1	DF65271510	Film Cap., 270pF ±5% 50V
CE27	1	1	1	DF15102050	Film Cap., 0.001μF ±5% 50V
CE28	1	1	1	DF15102050	Film Cap., 0.001μF ±5% 50V
CE29	1	1	1	DF16332050	Film Cap., 0.0033μF ±10% 50V
CE30	1	1	1	DF16332050	Film Cap., 0.0033μF ±10% 50V
CE31	1	1	1	DD16500010	Ceramic Cap., 50pF ±10% 50V
CE32	1	1	1	DD16500010	Ceramic Cap., 50pF ±10% 50V
CE33	1	1	1	EV10502560	Electrolytic Cap., 1μF ±20% 25V
CE34	1	1	1	EV10502560	Electrolytic Cap., 1μF ±20% 25V
CE35	1	1	1	EV33503560	Electrolytic Cap., 3.3μF ±20% 35V
CE36	1	1	1	EV33503560	Electrolytic Cap., 3.3μF ±20% 35V
CE37	1	1	1	EQ47501610	Electrolytic Cap., 4.7μF ±30% 16V
CE38	1	1	1	EQ47501610	Electrolytic Cap., 220μF $\pm\frac{5}{10}\%$ 35V
CE39	1	1	1	EA22703590	Electrolytic Cap., 220μF $\pm\frac{5}{10}\%$ 35V
HE01	1	1	1	HC10001210	IC, BA312
HE02	1	1	1	HC10001210	IC, BA312
HE03	1	1	1	HT313272A0	Transistor, 2SC1327 S, T
HE04	1	1	1	HT107212A0	Transistor, 2SA721 S, T
HE05	1	1	1	HT313272A0	Transistor, 2SC1327 S, T
HE06	1	1	1	HT107212A0	Transistor, 2SA721 S, T
JE01	1	1	1	YP06000280	Plug
SE01	1	1	1	SR10050073	Rotary Switch
PH01	1	1	1	YD29160050	<b>PH01 FILTER BOARD</b> P.W. Board, Filter
	1	1	1	ZZ29281050	P.W. Board Assembly
RH01	1	1	1	RT05104140	Resistor, 100kΩ ±5% ¼W
RH02	1	1	1	RT05104140	Resistor, 100kΩ ±5% ¼W
RH03	1	1	1	RT05123140	Resistor, 12kΩ ±5% ¼W
RH04	1	1	1	RT05123140	Resistor, 12kΩ ±5% ¼W
RH05	1	1	1	RT05105140	Resistor, 1MΩ ±5% ¼W
RH06	1	1	1	RT05105140	Resistor, 1MΩ ±5% ¼W
RH07	1	1	1	RT05104140	Resistor, 100kΩ ±5% ¼W
RH08	1	1	1	RT05104140	Resistor, 100kΩ ±5% ¼W
RH09	1	1	1	RT05362140	Resistor, 3.6kΩ ±5% ¼W
RH10	1	1	1	RT05362140	Resistor, 3.6kΩ ±5% ¼W
RH11	1	1	1	RT05225140	Resistor, 2.2MΩ ±5% ¼W

REF. DESIG.	Q'TY			PART NO.	DESCRIPTION
	U	C	E		
RH12	1	1	1	RT05225140	Resistor, 2.2MΩ ±5% ¼W
RH13	1	1	1	GJ05331020	Resistor, 330Ω ±5% 2W
RH14	1	1	1	GJ05331020	Resistor, 330Ω ±5% 2W
RH15	1	1	1	GJ05151010	Resistor, 150Ω ±5% 1W
RH16	1	1	1	GJ05151010	Resistor, 150Ω ±5% 1W
SH01	1	1	1	SP04050120	Push Switch
CH01	1	1	1	DD16201030	Ceramic Cap., 200pF ±10%
CH02	1	1	1	DD16201030	Ceramic Cap., 200pF ±10%
CH03	1	1	1	DF16273050	Film Cap., 0.027μF ±10% 50V
CH04	1	1	1	DF16273050	Film Cap., 0.027μF ±10% 50V
CH05	1	1	1	DF16473050	Film Cap., 0.047μF ±10% 50V
CH06	1	1	1	DF16473050	Film Cap., 0.047μF ±10% 50V
CH07	1	1	1	DF16103050	Film Cap., 0.01μF ±10% 50V
CH08	1	1	1	DF16103050	Film Cap., 0.01μF ±10% 50V
PH07	2	2	2	3444118050	Spacer
PH09	2	2	2	2933118010	Spacer
JH01	?	20	20	YP10001130	Plug
JH20	?	20	20	YP10001130	Plug
PT01	1	1	1	YD29160040	<b>PT01 MONITER DOLBY BOARD</b> P.W. Board, Monitor, Dolby
	1	1	1	ZZ29160040	P.W. Board Assembly
			1	ZZ29168040	P.W. Board Assembly
RT01	1	1	1	RT05102140	Resistor, 1kΩ ±5% ¼W
RT02	1	1	1	RT05102140	Resistor, 1kΩ ±5% ¼W
CT01			1	DF15102050	Film Cap., 0.001μF ±5% 50V
CT01	1	1		DF15222050	Film Cap., 0.0022μF ±5% 50V
CT02	1	1		DF15222050	Film Cap., 0.0022μF ±5% 50V
CT02			1	DF15102050	Film Cap., 0.001μF ±5% 50V
ST01	1	1	1	SP06050070	Push Switch
JT01	?	23	23	YP10001130	Plug
JT23	?	23	23	YP10001130	Plug
PY01	1	1	1	YD22100030	<b>PY01 FUNCTION BOARD</b> P.W. Board, Function
	1	1	1	ZZ22100030	P.W. Board Assembly
MY01	?	8	8	IN10080370	Lamp
MY08	?	8	8	IN10080370	Lamp
JY01	?	12	12	YT10001130	Plug
JY12	?	12	12	YT10001130	Plug
PZ01	1	1	1	YD28860160	<b>PZ01 DIAL LAMP BOARD</b> P.W. Board, Dial Lamp
	1	1	1	ZZ29281160	P.W. Board Assembly
MZ01	?	5	5	IN10080070	Lamp
MZ05	?	5	5	IN10080070	Lamp



U: U.S.A.  
C: Canada  
E: Europe

REF. DESIG.	Q'TY			PART NO.	DESCRIPTION
	U	C	E		
JZ01 ? JZ10 JZ11 ? JZ14	10	10	10	YJ08000170	Socket
	4	4	4	YP10001130	Plug
	<b>PC01 DOLBY LEVEL BOARD</b>				
PC01	1	1	1	YD29151070	P.W. Board, Dolby Level
	1	1	1	ZZ29283070	P.W. Board Assembly
RC01	1	1	1	RA01040150	Trimming Resistor, 100kΩ (B)
RC02	1	1	1	RA01040150	Trimming Resistor, 100kΩ (B)
RC03	1	1	1	RT05683140	Resistor, 68kΩ ±5% ¼W
RC04	1	1	1	RT05683140	Resistor, 68kΩ ±5% ¼W
RC05	1	1	1	RT05104140	Resistor, 100kΩ ±5% ¼W
RC06	1	1	1	RT06104140	Resistor, 100kΩ ±5% ¼W
RC07	1	1	1	RT05392140	Resistor, 3.9kΩ ±5% ¼W
RC08	1	1	1	RT05392140	Resistor, 3.9kΩ ±5% ¼W
RC09	1	1	1	RT05104140	Resistor, 100kΩ ±5% ¼W
RC10	1	1	1	RT05104140	Resistor, 100kΩ ±5% ¼W
CC01 ? CC04	4	4	4	EV10502560	Electrolytic Cap., 1μF 25V
HC01	1	1	1	HT313272A0	Transistor, 2SC1327 S or T
HC02	1	1	1	HT313272A0	Transistor, 2SC1327 S or T
JC01 ? JC08	8	8	8	YP10001130	Plug
	<b>PU01 ANT. MUTING BOARD</b>				
PU01	1	1	1	YD22100010	P.W. Board ANT. Muting
	1	1	1	ZZ22100010	P.W. Board Assembly
RU00	1	1	1	RC00000120	Resistor, 0Ω
RU01	1	1	1	RK02030322	Variable Resistor, 20kΩ (B)
RU02	1	1	1	RK05030170	Variable Resistor, 50kΩ (B)
RU03	1	1	1	RT05392140	Resistor
LU01	1	1	1	LB30075260	Balance Coil, 75Ω ↔ 300Ω
LU02	1	1	1	LC11540020	Choke Coil, 150μH
JU01	1	1	1	BY04050010	Terminal
JU02 ? JU07	6	6	6	YP10001130	Plug
R001	1	1	1	RM02540220	Variable Resistor, Volume 250kΩ
R002	1	1	1	RS05040050	Variable Resistor, Bal. 500kΩ
R004	1	1	1	RT05104140	Resistor, 100kΩ ±5% ¼W
R005	1	1	1	RC10225120	Resistor, 2.2MΩ ±10% ½W
R006	1	1	1	RT05105140	Resistor, 1MΩ ±5% ¼W
R007	1	1	1	RT05105140	Resistor, 1MΩ ±5% ¼W
R011	1	1	1	GF05151120	Resistor, 150Ω ±5% ½W
C001	1	1	1	DK18103010	Ceramic Cap., 0.01μF 50V
C002	1	1	1	DK18403010	Ceramic Cap., 0.04μF 50V
C003	1	1	1	EA33601090	Electrolytic Cap., 33μF 10V
C004	1	1	1	EC10905510	Electrolytic Cap., 10,000μF 55V
C005	1	1	1	EC10905510	Electrolytic Cap., 10,000μF 55V
C006	1	1	1	DK18103010	Ceramic Cap., 0.01μF 50V

REF. DESIG.	Q'TY			PART NO.	DESCRIPTION
	U	C	E		
C009	1	1	1	DF17223800	Ceramic Cap., 0.02μF1000V
H001	1	1	1	HT40555340	Transistor, 2SA555 S, R or Q
H002	1	1	1	HT20600340	Transistor, 2SB600 S, R or Q
H003	1	1	1	HT40555340	Transistor, 2SA555 S, R or Q
H004	1	1	1	HT20600340	Transistor, 2SB600 S, R or Q
H005	1	1	1	HV00005080	Varistor
H006	1	1	1	HV00005080	Varistor
H007	1	1	1	HD20017050	Diode, S5188
L001	1	1	1	LF11200470	ANT Coil
L002	1	1	1	LC13320020	Choke Coil, 3.3μH
L003	1	1	1	LC13320020	Choke Coil, 3.3μH
L004	1	1	1	TS61405040	Power Transformer
L004	1	1	1	TS61405050	Power Transformer
S001	1	1	1	SR10060150	Rotary Switch, Selector
S002	1	1	1	SP02010150	Push Switch, Power
M001	1	1	1	IM11042270	Meter, Signal
M002	1	1	1	IM11042240	Meter, Tuning
M003	1	1	1	IN10080070	Lamp, Meter
M004	1	1	1	IN10080070	Lamp, Meter
M005	1	1	1	IN10080300	Lamp, Pointer
F001	1	1	1	FS10500040	Fuse
F002	1	1	1	FS20500910	Fuse
F003	1	1	1	FS20300900	Fuse
F001	1	1	1	FS10400900	Fuse
G001	1	1	1	BF10400030	Printed Comp.
G001	1	1	1	BF33300020	Printed Comp.
W001	1	1		YC02400220	AC Code
W001			1	YC01900030	AC Code
J001	1	1	1	YT01010050	Terminal
J002	1	1	1	YT02010130	Terminal
J003	1	1	1	YT02040140	Terminal
J004	1	1	1	YT02040140	Terminal
J005	1	1	1	YT02040140	Terminal
J006	1	1	1	YT02040170	Terminal
J007	1	1	1	YT03040160	Terminal
J008	1	1	1	YT03040160	Terminal
J009	1	1	1	YJ08000120	Socket
J010	1	1	1	YJ04000570	Socket
J011	1	1	1	YJ04000570	Socket
J012	1	1	1	YJ01000810	Jack
J013	1	1	1	YJ01000980	Jack
J014	1	1	1	YL01030180	Terminal
J015	1	1	1	YJ08000190	Socket
J016	1	1	1	YJ08000190	Socket
J017	1	1	1	YJ01000980	Jack
J018	1	1	1	YL01030180	Terminal
J019	1	1	1	YJ06000190	Socket
J020	1	1	1	YL01030180	Terminal
J021	1	1	1	YJ05000192	Socket
J022	1	1	1	YJ05000192	Socket
J023	1	1	1	YJ05000192	Socket
J024	1	1	1	YJ05000192	Socket
J025	1	1	1	BY03110010	Terminal

U: U.S.A.  
 C: Canada  
 E: Europe

REF. DESIG.	Q'TY			PART NO.	DESCRIPTION
	U	C	E		
J009	1	1	1	YJ08000220	Socket
<b>PR01 FUSE BOARD</b>					
PR01		1		YD29601030	P.W. Board
		1		ZZ29603030	P.W. Board Assembly
JR01		1		YJ08000200	Jack
JR02		1		YJ08000200	Jack
JR03		1		YJ08000200	Jack
JR04		1		YJ08000200	Jack
JR05		1		YJ08000200	Jack
JR06		1		YJ08000200	Jack
JR07					
?		6		YP10001130	Plug
JR12					
FR01		1		FS10400060	Fuse
FR02		1		FS10100070	Fuse
FR03		1		FS10100070	Fuse

## 16. TECHNICAL SPECIFICATIONS

### Amplifier Section

<b>RATED POWER OUTPUT, MINIMUM CONTINUOUS AVERAGE POWER</b>	
PER CHANNEL, BOTH CHANNELS DRIVEN .....	<b>65 WATTS</b>
<b>POWER BAND</b> .....	<b>20 Hz to 20 kHz</b>
<b>TOTAL HARMONIC DISTORTION</b> .....	<b>0.08%</b>
<b>LOAD IMPEDANCE</b> .....	<b>8 OHMS</b>
Maximum Power Output, DIN 45500 .....	80 W
(less than 1% THD, 10 min. test)	
Power Bandwidth at 1% THD, DIN 45500 .....	10 Hz ~ 60 kHz
I.M. Distortion (I.H.F. method, 60 Hz and 7 kHz mixed 4:1 at rated power output) .....	0.08%
Damping Factor .....	55
Sensitivity (at MAIN IN) .....	1.5 V
Impedance (at MAIN IN) .....	30 k Ohms
Frequency Response for Power Amp only .....	±0.2 dB

### Preamplifier Section

#### Phono

Input Overload at 1 kHz .....	100 mV
Equivalent Input Noise .....	1.25 $\mu$ V
Dynamic Range .....	98 dB
(Dynamic Range is the ratio of input overload to equivalent input noise)	
Input Sensitivity .....	1.8 mV
Input Impedance .....	47 k Ohms
Frequency Response, RIAA 20 Hz to 20 kHz .....	±0.5 dB
Signal-to-Noise Ratio .....	76 dB
(at rated output and 7.75 mV input)	
Signal-to-Noise Ratio, unweighted (DIN 45500) .....	45 dB
High Level (Aux and Tape)	
Input Sensitivity .....	180 mV
Input Impedance .....	100 k Ohms
Frequency Response (includes power amp.) .....	10 Hz to 60 kHz ±1.25 dB
Signal-to-Noise Ratio .....	88 dB
(ref. to rated output and 775 mV input)	

#### Output Levels

Tape Out (ref. 7.75 mV at Phono inputs) .....	775 mV
Pre-Out (ref. 180 mV at Aux inputs) .....	1.5 V
(ref. 500 mV at Aux inputs, main amp disconnected)	4.2 V

#### Output Impedance

Tape Out .....	600 Ohms
Pre-Out .....	900 Ohms

### FM Tuner Section

#### Sensitivity

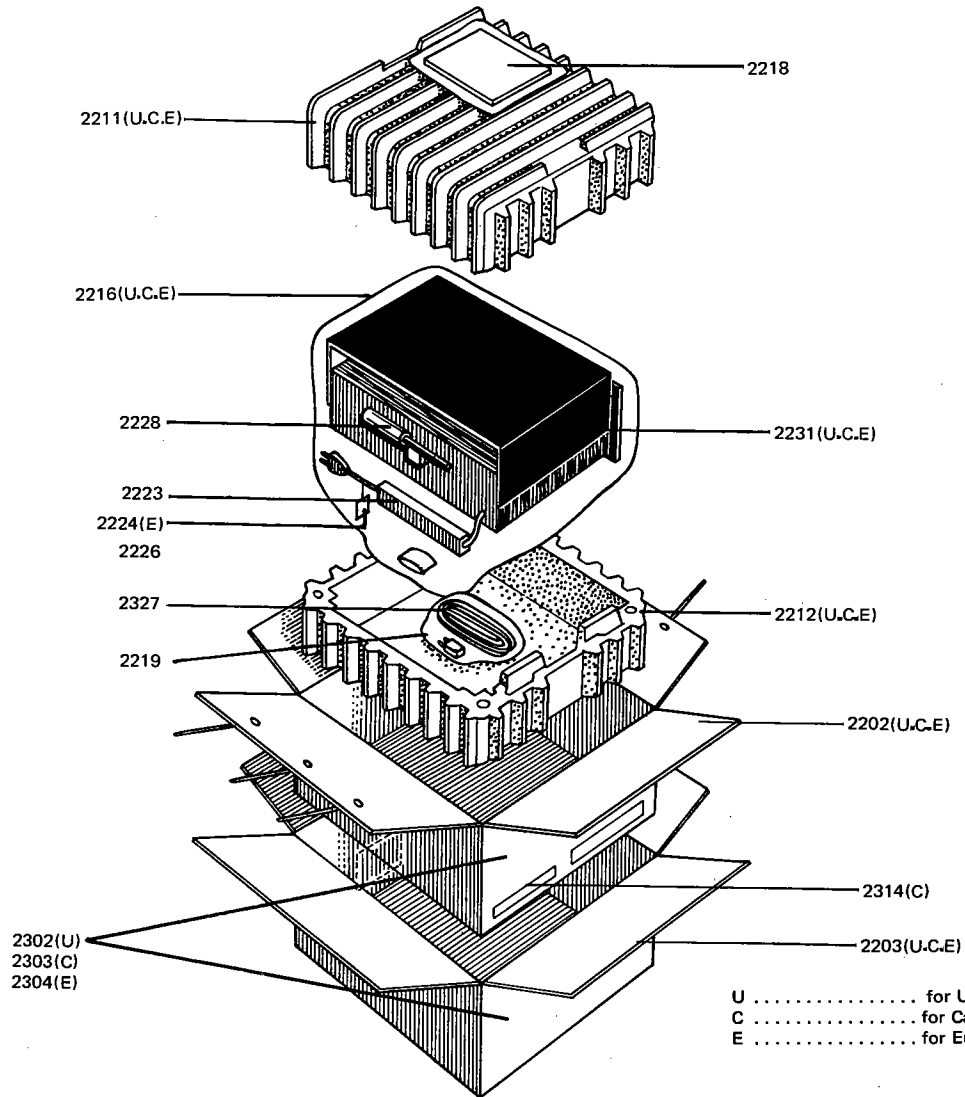
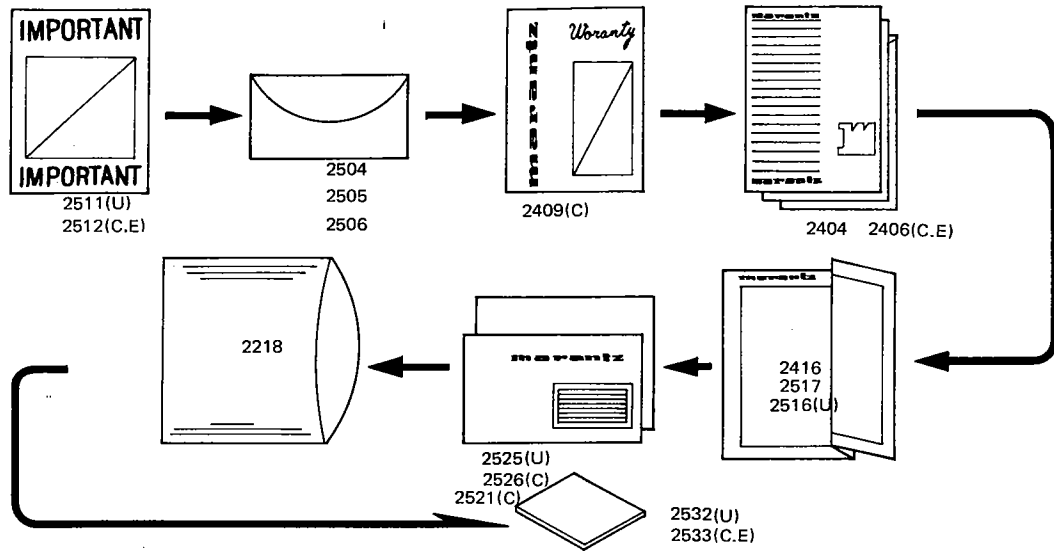
IHF Usable .....	10.3 dBf (1.8 $\mu$ V)
IHF 50 dB Quieting	
(Mono) .....	16.1 dBf (3.5 $\mu$ V)
(Stereo) .....	36 dBf (.35 $\mu$ V)
DIN Sensitivity	
(Mono, 26 dB S/N, 300 ohm input) .....	1.6 $\mu$ V
(Stereo, 46 dB S/N, 300 ohm input) .....	40 $\mu$ V

#### Quieting Slope (Mono)

RF Input for 30 dB Quieting .....	9.8 dBf (1.7 $\mu$ V)
Quieting at:	
20 dBf ( 5.5 $\mu$ V) .....	55 dB
25 dBf ( 10 $\mu$ V) .....	60 dB
40 dBf ( 55 $\mu$ V) .....	70 dB
65 dBf (1000 $\mu$ V) .....	75 dB

<b>Quieting Slope (Stereo)</b>	
Quieting at:	
30 dBf ( 17 $\mu$ V) .....	40 dB
40 dBf ( 55 $\mu$ V) .....	50 dB
50 dBf ( 173 $\mu$ V) .....	58 dB
65 dBf (1000 $\mu$ V) .....	65 dB
<b>Distortion (Mono)</b>	
at 50 dB Quieting, 1000 Hz .....	0.6 %
at 65 dBf (1000 $\mu$ V), 1000 Hz .....	0.15%
<b>Hum and Noise</b>	
at 65 dBf (1000 $\mu$ V)	
Mono .....	73 dB
Stereo .....	63 dB
<b>Frequency Response</b>	
30 Hz to 15 kHz	
Mono .....	$\pm$ 1.0 dB
Stereo .....	$\pm$ 1.0 dB
<b>Capture Ratio</b>	
at 45 dBf ( 100 $\mu$ V) .....	1.5 dB
at 65 dBf (1000 $\mu$ V) .....	1.0 dB
Alternate Channel Selectivity .....	70 dB
Spurious Response Rejection .....	100 dB
Image Response Rejection .....	85 dB
I.F. Rejection (Balanced) .....	100 dB
A.M. Suppression .....	55 dB
<b>Stereo Separation</b>	
100 Hz .....	42 dB
1000 Hz .....	45 dB
10 kHz .....	32 dB
Subcarrier Rejection .....	65 dB
<b>AM Tuner Section</b>	
IHF Usable Sensitivity .....	12 $\mu$ V
Distortion (THD), 30% Modulation .....	0.4%
Signal-to-Noise Ratio .....	54 dB
Frequency Response ( $\pm$ 3 dB) .....	40 Hz to 2.5 kHz
Alternate Channel Selectivity .....	46 dB
Image Rejection .....	70 dB
Spurious Response Rejection .....	70 dB
I.F. Rejection .....	70 dB
<b>General</b>	
Power Requirements .....	120 V $\sim$ , 60 Hz
(E and N versions are featuring an external voltage selector for use on 110/120/240 V. Other versions can be converted by a qualified technician to operate on 110/120/240 V.)	
Power Consumption at rated output, both channels operating .....	260 Watts
Idling Power (Volume Control at zero) .....	33 Watts
<b>Semiconductor Complement</b>	
Integrated Circuits .....	4
Transistors .....	66
Diodes .....	51
Field Effect Transistors .....	4
<b>Dimensions</b>	
Panel Width .....	440 mm (17-1/4 inches)
Panel Height .....	137 mm ( 5-3/8 inches)
Depth .....	365 mm (14-3/8 inches)
<b>Weight</b>	
Unit alone .....	15.9 kg (35.2 lbs.)
Packed for shipment .....	18.9 kg (41.8 lbs.)

# 17 PACKING MATERIAL EXPLODED VIEW



U ..... for U.S.A.  
 C ..... for Canada  
 E ..... for Europe

## **SERVICE INFORMATION FOR EUROPEAN MODEL**

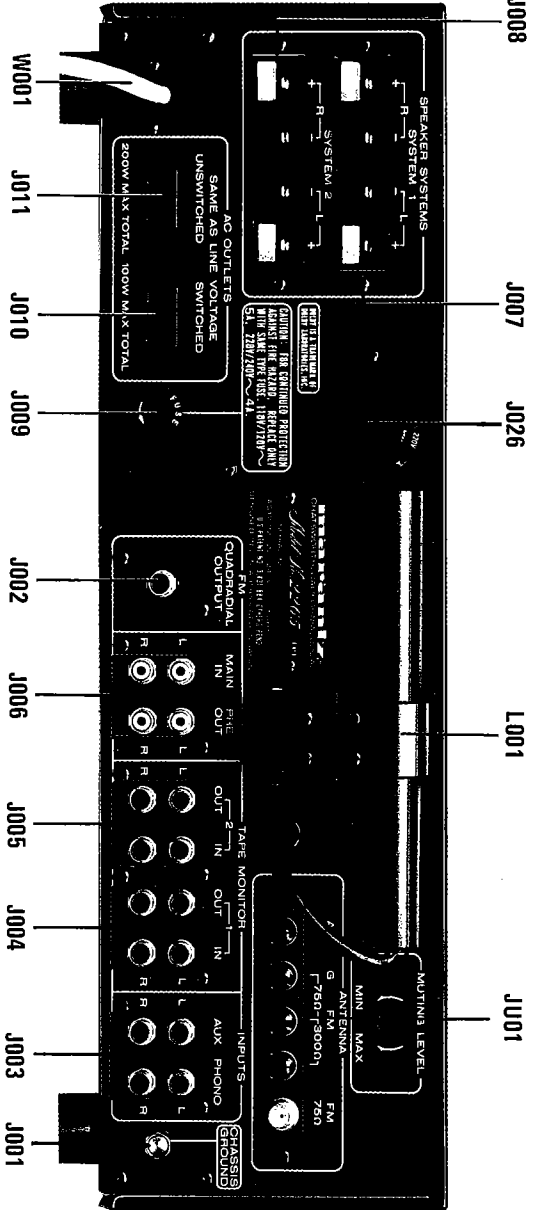
The information contained herein includes rear panel and main chassis component locations, voltage conversion and FTZ regulation. For the alignment procedures, test equipment, and repairing hints, refer to the original service manual.

### **TABLE OF CONTENTS**

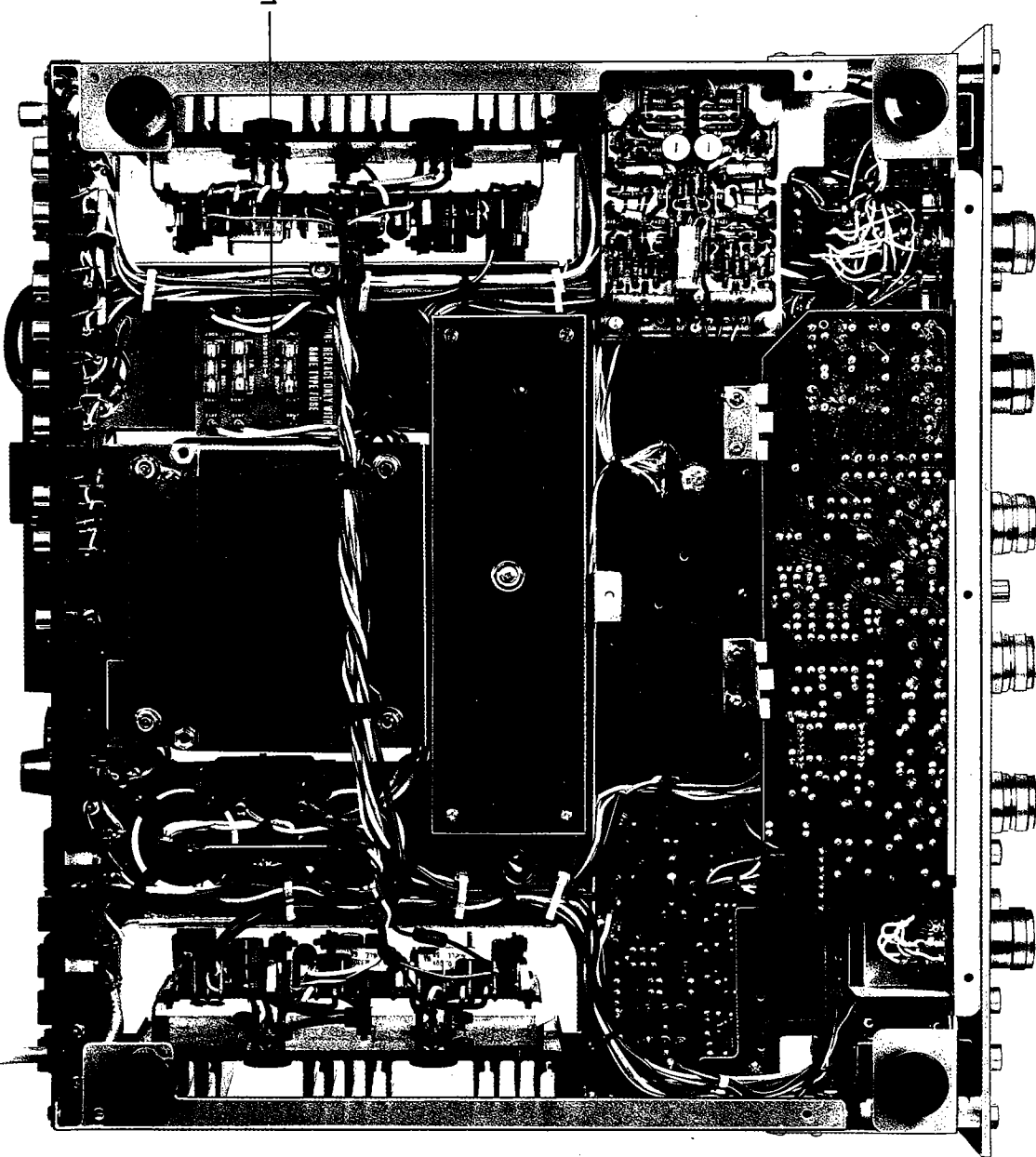
<b>SECTION</b>	<b>PAGE</b>
<b>1. MAJOR COMPONENT LOCATIONS .....</b>	<b>40</b>
<b>1.1 Rear Panel Adjustment and Component Locations .....</b>	<b>40</b>
<b>1.2 Main Chassis Component Locations (Bottom View) .....</b>	<b>40</b>
<b>2. VOLTAGE CONVERSION .....</b>	<b>41</b>
<b>2.1 Voltage Conversion Chart .....</b>	<b>41</b>
<b>3. FTZ REGULATION .....</b>	<b>41</b>

## MAJOR COMPONENT LOCATIONS

### .1 Rear Panel Adjustment and Component Locations



### .2 Main Chassis Component Locations (Bottom View)

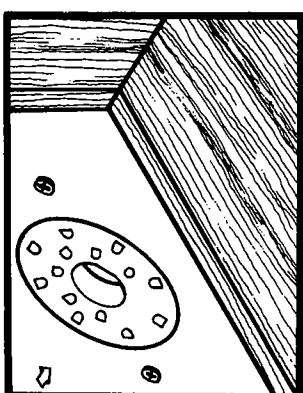


## 2. VOLTAGE CONVERSION

This Model is equipped with a universal power transformer to permit operation at 110, 120, 220 and 240V AC50/60 Hz.

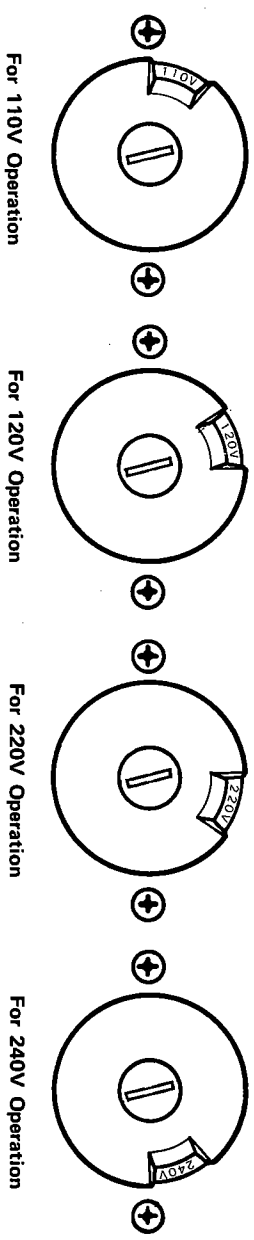
To convert the unit to the required voltage, set the plug as illustrated so that you can adjust the

### 2.1 Voltage Conversion Chart



voltage as required.

**CAUTION: DISCONNECT POWER SUPPLY CORD FROM AC OUTLET BEFORE CONVERTING VOLTAGE.**



## 3. FTZ REGULATION

Instruction for the use in the range other than specified in FTZ codes

Achtung für die Leute, die in dem Gebiet wohnen, wo die FTZ-Bestimmungen vorherrschen sind.

Sollte das Gerät auch für Frequenzen ausserhalb des in den FTZ-Bestimmungen angegebenen Bereiches empfangsbereit sein, bitten wir, den Bereich durch Nachstellen des Kernes in der Oszillatortspule (in der Abbildung mit "FTZ" gekennzeichnet) so zu korrigieren, dass er den Bestimmungen entspricht.



**marantz**

**MARANTZ CO., INC. • P.O. BOX 577 • CHATSWORTH, CALIFORNIA • 91311**

A WHOLLY-OWNED SUBSIDIARY OF SUPERSCOPE INC., CHATSWORTH, CALIFORNIA • 91311