

SERVICE  
MANUAL

6170



**marantz**

model 6170

*Turntable*

## MARANTZ DESIGN AND SERVICE

Using superior design and selected high grade components, MARANTZ company has created the ultimate in stereo sound.

Only **original MARANTZ parts** can insure that your MARANTZ product will continue to perform to the specifications for which it is famous.

Parts for your MARANTZ equipment are generally available to our National Marantz Subsidiary or Agent.

### ORDERING PARTS:

Parts can be ordered either by mail or by telex. In both cases, correct part number has to be specified. If you order by mail, fulfil MARANTZ order forms.

The following information must be supplied to eliminate delays in processing your order:

1. Complete address
2. Complete part numbers and quantities required
3. Description of parts
4. Model number for which part is required
5. Way of shipment
6. Signature: any order form or telex must be signed otherwise such part order will be considered as null and void.

### PARTS ORDERING

Parts may be ordered at the following addresses:

**AUSTRIA**  
HORNYPHON  
Vertriebsgesellschaft GmbH  
Wienerbergstrasse 1  
A 1101 Wien  
Austria  
Telex: 132.332

**AUSTRALIA**  
MARANTZ AUSTRALIA  
PTY., Ltd.  
19 Chard Road  
Brookvale, NSW 2100  
Australia  
Telex: 24121

**BELGIUM**  
SVD DIVISION MARANTZ  
Industrialaan 1  
1720 Groot-Bijgaarden  
Belgium  
Telex: 24466

**CHILE**  
MARANTZ  
DIVISION OF PHILIPS S.A.  
AV. Santa Maria, 0760  
Casilla 2687  
Santiago  
Telex: 240.239

**DENMARK**  
MARANTZ  
DIVISION OF PHILIPS  
SERVICE A/S  
Prags Boulevard 80  
Postbox 1919  
DK-2300 København S  
Denmark  
Telex: 31201

**EIRE**  
MARANTZ IRELAND Ltd.  
Newstead  
Glouceagh  
Dublin 4  
Telex: 25200

**FINLAND**  
MARANTZ  
DIVISION OF OY PHILIPS Ab  
Kaivokatu 8  
00100 Helsinki  
Finland  
Telex: 124811

**FRANCE**  
MARANTZ FRANCE  
4 Rue Bernard Palissy  
92600 Asnières  
France  
Telex: 611651

**GERMANY**  
MARANTZ GERMANY GmbH  
Max-Planck-Strasse 22  
6072 Dreieich 1  
Germany  
Telex: 529821

**THE NETHERLANDS**  
MARANTZ  
De Limiet 3  
4131 NR Vianen  
The Netherlands  
Telex: 47679

**NORWAY**  
MARANTZ  
DIVISION OF PHILIPS A/S  
Sandstuveien 40  
Oslo 6  
Norway  
Telex: 72640

**GREAT BRITAIN**  
MARANTZ AUDIO U.K. Ltd  
Unit 15/16  
Saxon Way Industrial Estate  
Moor Lane  
Harmondsworth UB7 OLW  
Great Britain  
Telex: 935196

**GREECE**  
ADAMCO S.A.  
P.O.Box 21025  
Hippocrates Street 188  
Athens 11410  
Greece  
Telex: 216.795

**ITALY**  
MARANTZ ITALIANA S.p.A.  
Via Monte Napoleone 10  
20121 Milano  
Italia

**JAPAN**  
MARANTZ JAPAN, Inc.  
35-1, 7-chome, Sagami-cho  
Sagamihara-shi, Kanagawa  
Japan

**KUWAIT**  
AL ALAMIAH ELECTRONICS  
Ussama Building  
Fahd al Saleem Street  
P.O.Box 23781  
Safat-Kuwait  
Telex: 22694

**SAUDI ARABIA**  
AL ALAMIAH ELECTRONICS  
P.O.Box 5954  
University Street  
Riyadh 11432  
Saudi Arabia  
Telex: 201530

**SOUTH AFRICA**  
MARANTZ  
DIVISION OF PHILIPS S.A.  
Rainer House  
Ove Street, 10  
Doornfontein  
Johannesburg  
Telex: 483.456

**SPAIN**  
PHONO S.A.  
Ignacio Iglesias 10  
Badalona (Barcelona)  
Spain  
Telex: 59355

**SWEDEN**  
MARANTZ  
DIVISION OF PHILIPS  
Försäljning AB  
Tegeluddsvägen 1  
S-115 84 Stockholm  
Sweden  
Telex: 14060

**SWITZERLAND**  
DYNAVOX ELECTRONICS  
Route de Villars 105  
1701 Fribourg  
Switzerland  
Telex: 942377

**TURKEY**  
DOGRUOL Ltd.  
I.M.C.  
6 Blok N°6310  
Unkapani  
Istanbul  
Turkey  
Telex: 22085

**MALTA**  
CACHIA & GALEA  
Republic Street, 68D  
Valetta  
Telex: 1682

**U.S.A.**  
MARANTZ COMPANY, Inc.  
National Service Department  
P.O.Box 577  
Chatsworth, CA 91311  
U.S.A.

### TECHNICAL ASSISTANCE

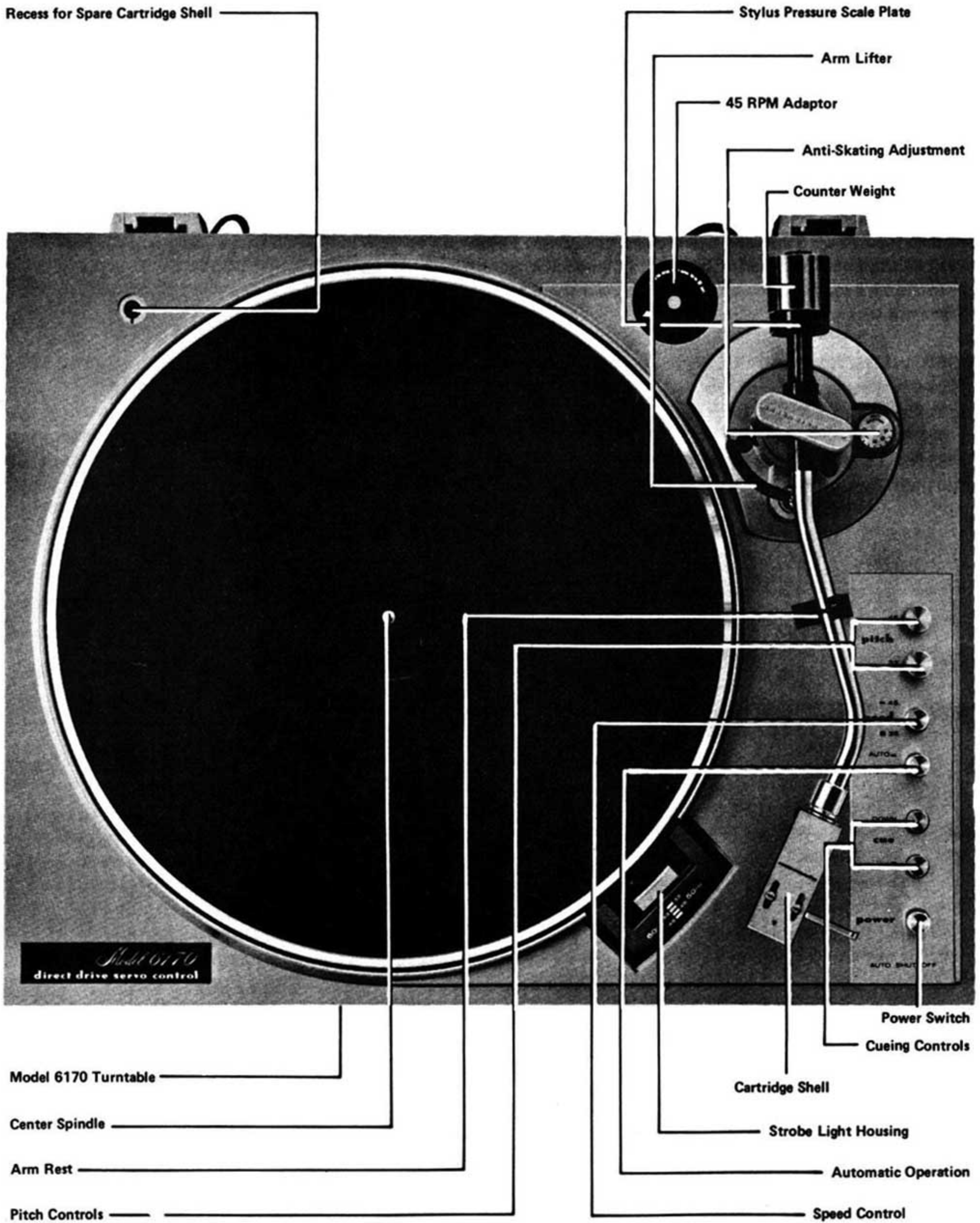
Should you require any other technical support, do not hesitate to contact the Technical Department of MARANTZ EUROPE & Co.  
Avenue Louise 326 - Bte. 32  
B-1050 Brussels  
Belgium  
Telephone: (02) 6407830 (10 l)  
Telex: 26602  
Fax.: (02) 649.29.20

All of the above locations are fully equipped to take care of your total service needs. Because various countries have differing configuration requirements, it is necessary that you contact the service facility in your particular country. In the event that there is no service location listed for your country, please, contact the nearest facility for the necessary assistance.

In case of difficulties, do not hesitate to contact the Technical Department at abovementioned address.

# marantz®

# MARANTZ MODEL 6170 TURNTABLE



# TABLE OF CONTENTS

Section	Title	Page
<b>1.</b>	<b>PERFORMANCE SPECIFICATIONS</b>	<b>3</b>
<b>2.</b>	<b>ADJUSTMENTS</b>	<b>4</b>
2-1.	Automatic Shut-Off Check and Adjustments	4
2-2.	Tone Arm Adjustments	4
<b>3.</b>	<b>SERVICE NOTES</b>	<b>6</b>
3-1.	Voltage Conversion for European Model	6
3-2.	Cartridge Wire Color Code	6
3-3.	Replacement Parts/Technical Assistance	6
<b>4.</b>	<b>DIAGRAMS</b>	<b>7</b>
4-1.	Power Supply Board Schematic Diagram and Component Location - P800	7
4-2.	Connector Board Schematic Diagram and Component Locations - PV03	8
4-3.	Auto/Manual Board Schematic Diagram and Component Locations - PV04	8
4-4.	Lead Swtich Board Schematic Diagram and Component Locations - PV01	9
4-5.	Lead Switch Board Schematic Diagram and Component Locations - PV02	9
4-6.	Schematic Diagram	10
<b>5.</b>	<b>EXPLODED VIEWS AND PARTS LIST</b>	<b>12</b>
5-1.	[C01-99] Case and General Parts	12, 13
5-2.	[P01-99] Turn Table and Motor	14
5-3.	[P02-99] Tone Arm	14
5-4.	[P03-99] Parts Assembled on The Chassis	15, 16
5-5.	[H01-99] Packing Materials	17, 18

## 1. PERFORMANCE SPECIFICATIONS

### GENERAL

Speeds: 33-1/3, 45 rpm  
 Speed Control (PITCH) range: 6% (±3%)  
 Drive System: Direct Drive  
 Drive Motor: DC Servo-Controlled  
 Platter Diameter: 12-1/8 in. (31.0 cm)  
 Rumble (DIN): -65 dB  
 Wow and Flutter: 0.03% (WRMS)  
 Power Requirements: 120 V AC, 60 Hz (USA and Canada Model)  
 110/120/220/240 V AC  
 50/60 Hz (European Model)  
 Power Consumption: 12 Watts  
 Dimensions: 17-3/4 in. Wide x 5-1/8 in. High x 14-1/8 in. Deep.  
 (450 mm x 130 mm x 360 mm)  
 Weight: 15.6 lbs (7.3 kg) Unpacked  
 30 lbs. (9.3 kg) Packed for Shipment

### TONE ARM

Type: Static-Balanced S Shaped Pipe Arm  
 Length: 8-7/16 in. (215 mm)  
 Overhang: 14 mm  
 Tracking Force Adjustment  
 Range: 0—3.0 g  
 Anti-Skating Force  
 Compensation Range: 0—4.0 g

## 2. ADJUSTMENTS

### 2-1. AUTOMATIC SHUT-OFF CHECK AND ADJUSTMENTS

#### 2-1-1. AUTOMATIC SHUT-OFF CHECK

In the automatic mode of operation, the solenoid L002 is in the activated state during playback. The end of playback is detected by the reed switch SV04 for 33 RPM or by the reed switch SV03 for 45 RPM. The switch grounds the positive end of L002 through RV02 temporarily. This returns the solenoid to the non-activated state, which allows the arm lifter to move up.

#### 2.1.2. AUTOMATIC SHUT-OFF ADJUSTMENT

Loosen the lead switch assembly lock screw 016N before making the automatic shut-off adjustment.

Adjust the screw 019N so that the AUTO mechanism may be operated at 45 RPM (for EP record). Change the speed from 45 RPM to 33 RPM after adjustment of 45 RPM (for EP record) has been completed. If the AUTO mechanism is incorrectly operated at 33 RPM (for LP record), adjust the screw 018N. When the speed set to "33" is in normal operation at 33 RPM (for LP record), and when the speed set to "45" is in normal operation at 45 RPM (for EP record), tighten the screw (021F x 2) securely.

### 2-2. TONE ARM ADJUSTMENTS

After a cartridge is mounted, several adjustments must be made to optimize turntable performance. First, the stylus overhang must be adjusted; then the tone arm balance, tracking force, and anti-skating force.

#### 2-2-1. STYLUS OVERHANG

The Model 6170 Turntable is designed to operate with the least distortion when the tip of the stylus is at a particular distance from the tone arm pivot. For this reason, the cartridge shell is slotted, allowing the cartridge with its mounting screws to be slid toward or away from the pivot point. This, in effect, changes the radius of the arc described by the stylus. Supplied in the accessory kit is a 45 RPM spindle adaptor. The adaptor has been specially marked with an arrow and a cross to aid you in setting the proper stylus overhang. Proceed as follows:

- A. With the turntable stopped, place the 45 RPM adaptor on the center spindle with the arrow pointing to the rear of the turntable.
- B. Remove the arm from its arm rest and remove the protective cover (if any) from the stylus.
- C. Place the stylus tip over the 45 RPM adaptor and adjust the cartridge so that the stylus tip will be perfectly centered in the cross.
- D. Make sure that the cartridge is installed straight. The sides of the cartridge must remain parallel to the sides of the shell.
- E. Snug up the mounting screws.

#### 2-2-2. VERTICAL TONE ARM BALANCE

The adjustable counterweight at the end of the tone arm establishes tone arm balance and stylus tracking force. Since no two types of cartridges weigh the same, the balance and tracking force must be adjusted for each cartridge being used.

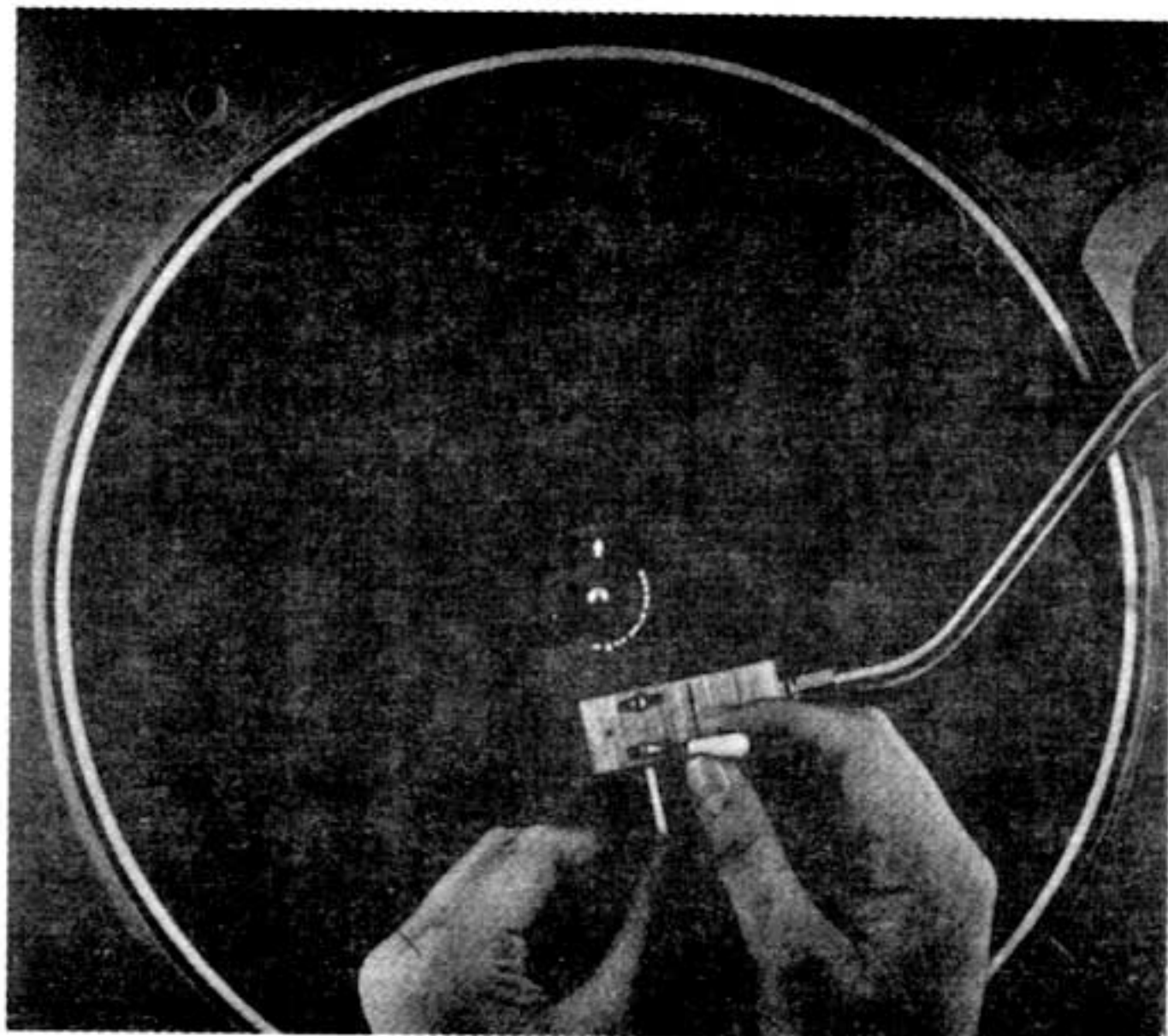


Figure 1. Stylus Overhang Adjustment

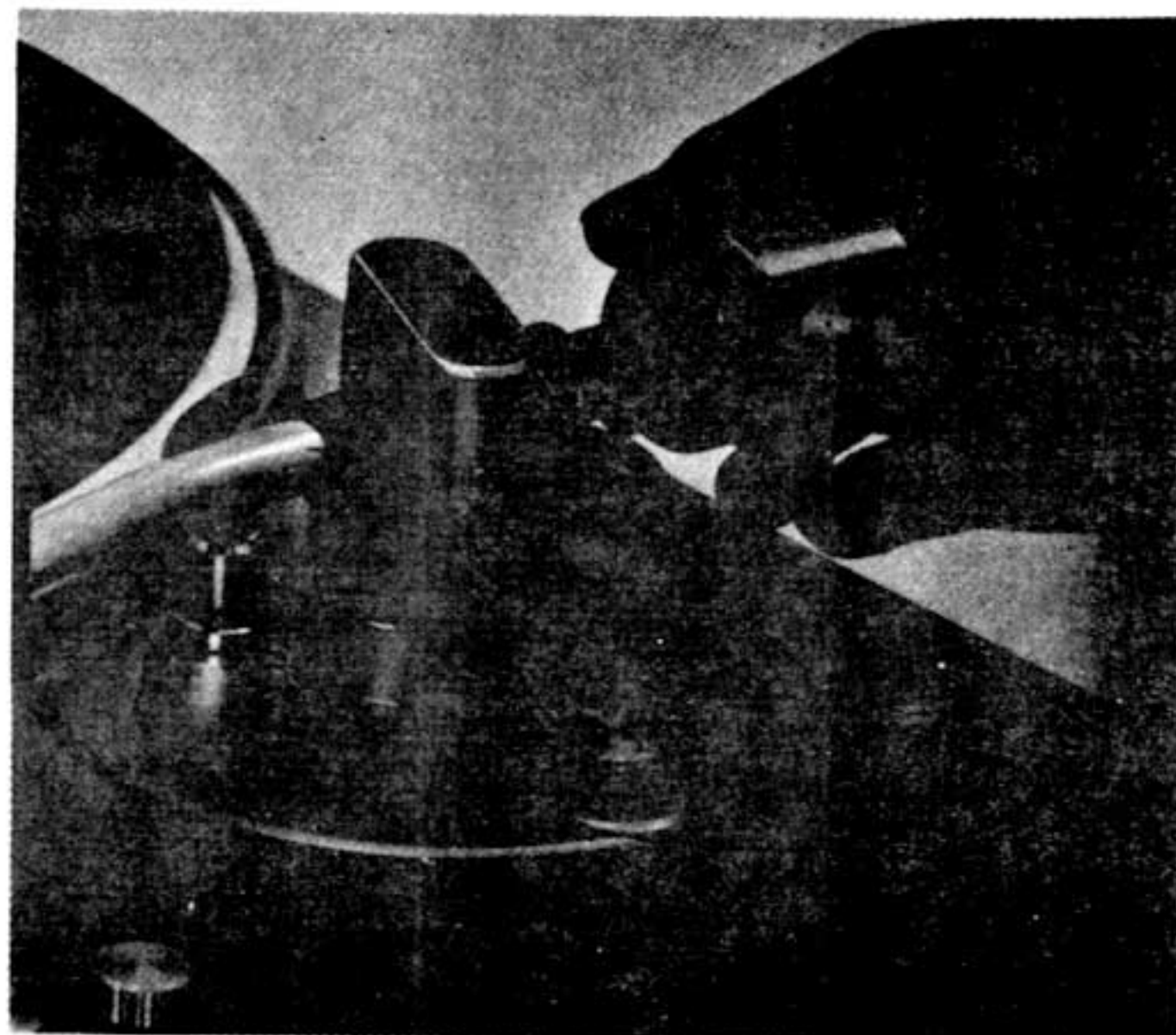


Figure 2. Tone Arm Balance Adjustment

**First**, to establish a point of reference, the entire arm assembly (with cartridge installed) must be balanced. If the cartridge has a removable stylus protector, remove it, (as you would to play a record). Release the tone arm from the arm rest.

To adjust the tone arm balance, set the anti-skate dial at 0.

To balance the arm, adjust the position of the counterweight by rotating it. A numbered stylus pressure scale plate is located immediately in front of the counterweight. Rotating the scale plate alone does not change the counterweight's position. To change the balance, grasp and turn the counterweight itself.

Adjust the weight so that the arm is level (parallel to the turntable surface) with the cartridge suspended in mid air.

Then, without moving the counterweight, set the stylus pressure scale plate to indicate zero. This establishes a reference point for setting the tracking force.

### **2-2-3. TRACKING FORCE**

For the recommended tracking force, refer to the instructions that accompany the cartridge.

Tracking force, the downward pressure of the stylus against the record, is produced by simply setting the arm off balance in the appropriate direction. That is, the counterweight is screwed inward (toward the arm pivot) until the desired downward pressure is achieved.

The stylus pressure scale plate is in frictional contact with the counterweight, so that they rotate together when the counterweight is turned. The numbers on the scale plate correspond to the tracking force measured in grams. So, if the desired tracking force is two grams, turn the counterweight inward until the stylus pressure scale plate registers 2.

### **2-2-4. ANTI-SKATING ADJUSTMENT**

The anti-skating mechanism is provided to counteract the natural tendency for the arm to "skate" toward the center of the record as it is being played. The more tracking force used, the more anti-skating force required.

The anti-skating force is adjustable with continuously graduations that correspond with the tracking force markings on the stylus pressure scale plate. Set the anti-skating force to the same value as the tracking force.

Place the arm in the arm rest, and secure it with the safety lock.

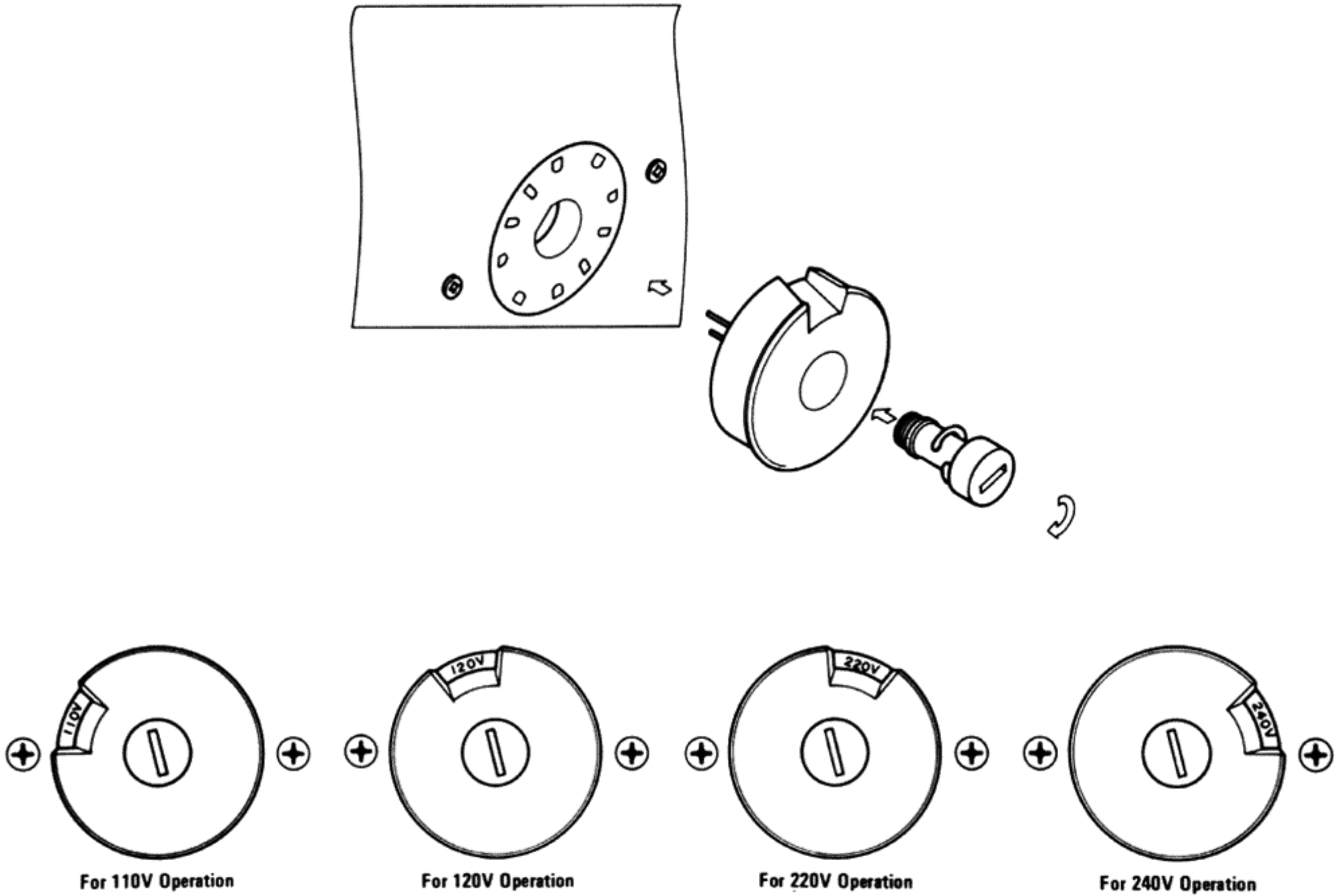
### 3. SERVICE NOTES

#### 3-1. VOLTAGE CONVERSION FOR EUROPEAN MODEL

The European version of the Model 6150 is equipped with a universal power transformer that may be adjusted to operate at 110 V, 120 V, 220 V, or 240 V AC at 50 to 60 Hz.

To convert the unit to a different power source voltage, reposition conversion plug as shown in the illustration below.

**CAUTION: DISCONNECT POWER SUPPLY CORD FROM AC OUTLET BEFORE CONVERTING VOLTAGE.**



#### 3-2. CARTRIDGE WIRE COLOR CODE

Before a cartridge is screwed into the shell, the small clips at the ends of the wires in the tone arm cartridge shell should be pushed onto their corresponding cartridge connection pins.

TONE ARM CARTRIDGES SHELL — WIRE COLOR CODE —	
RIGHT CHANNEL HOT . . . . .	RED
RIGHT CHANNEL GROUND . . . . .	GREEN
LEFT CHANNEL HOT . . . . .	WHITE
LEFT CHANNEL GROUND . . . . .	BLUE

The cartridge or its accompanying technical sheet will identify the cartridge connection pins. It may be necessary to slightly compress the terminals clips with your fingers to make them fit snugly on the prongs of some cartridges.

#### 3-3. REPLACEMENT PARTS/TECHNICAL ASSISTANCE

##### 3-3-1. REPLACEMENT PARTS

Turntable replacement parts may be ordered by writing to;

**MARANTZ COMPANY, INC.  
PARTS DEPARTMENT  
P.O. BOX 577  
CHATSWORTH, CALIFORNIA 91311 USA**

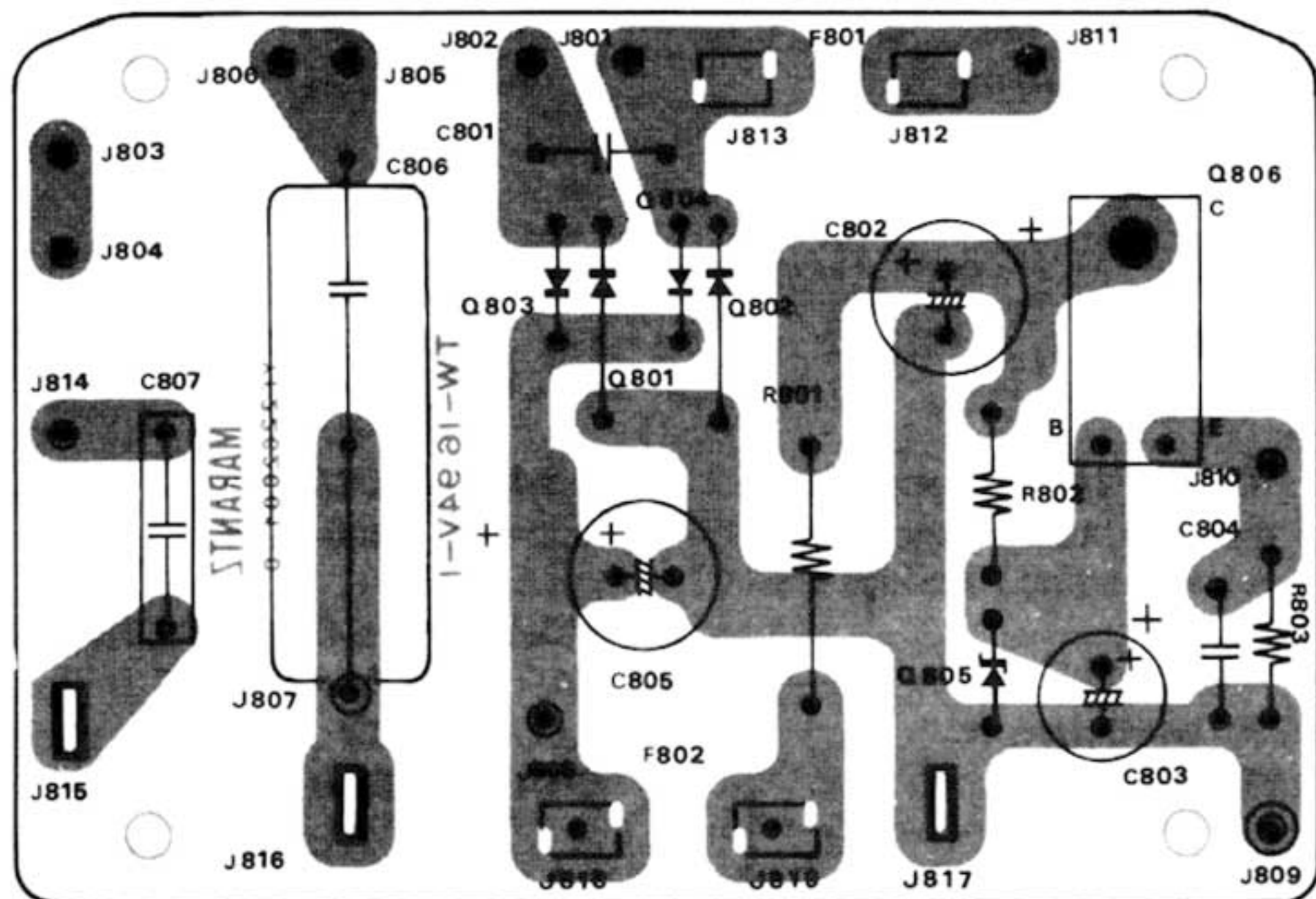
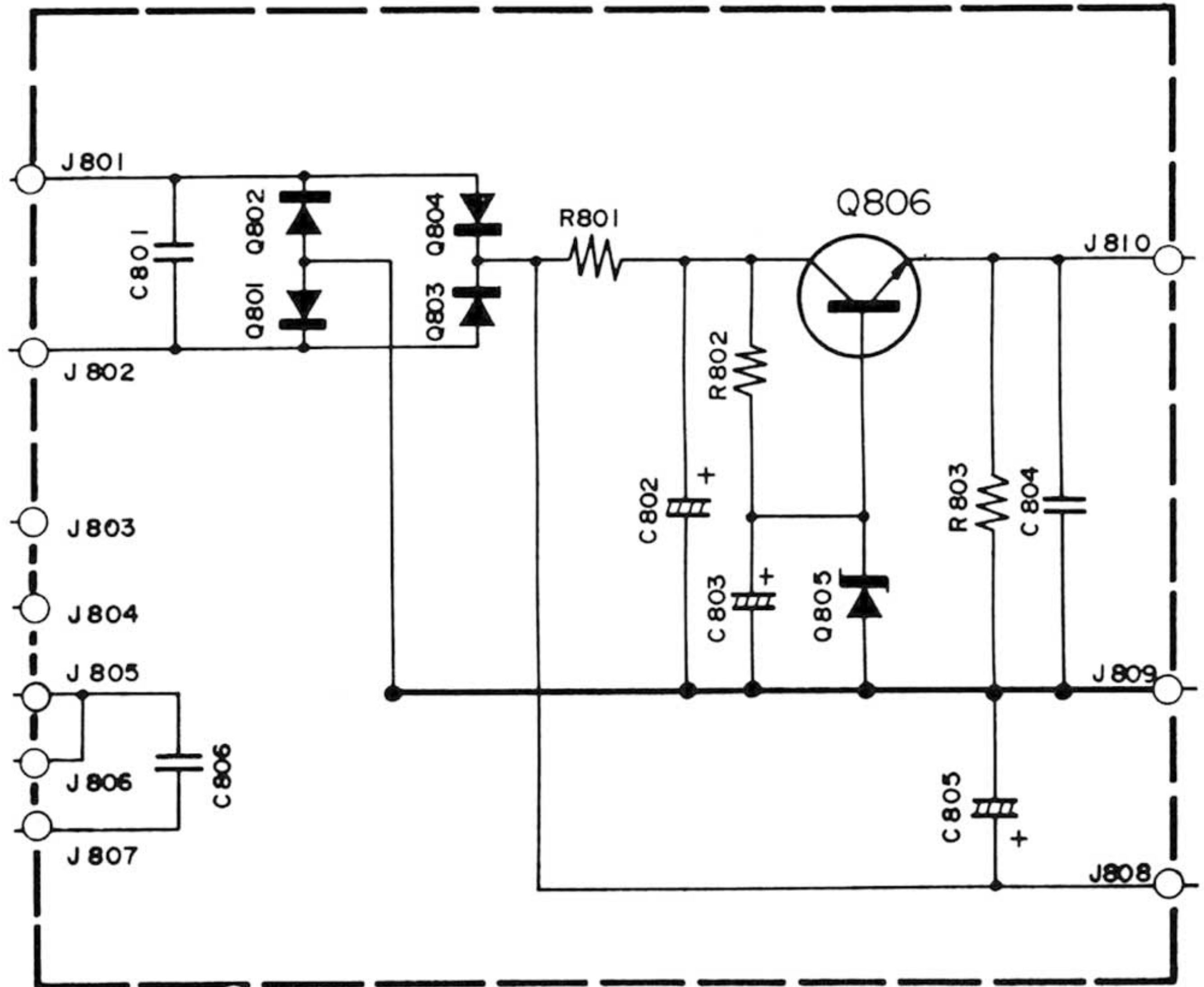
##### 3-3-2. TECHNICAL ASSISTANCE

Inquires regarding the operation and servicing of Marantz equipment should be directed to;

**MARANTZ COMPANY, INC.  
TECHNICAL SERVICES DEPARTMENT  
P.O. BOX 577  
CHATSWORTH, CALIFORNIA 91311 USA**

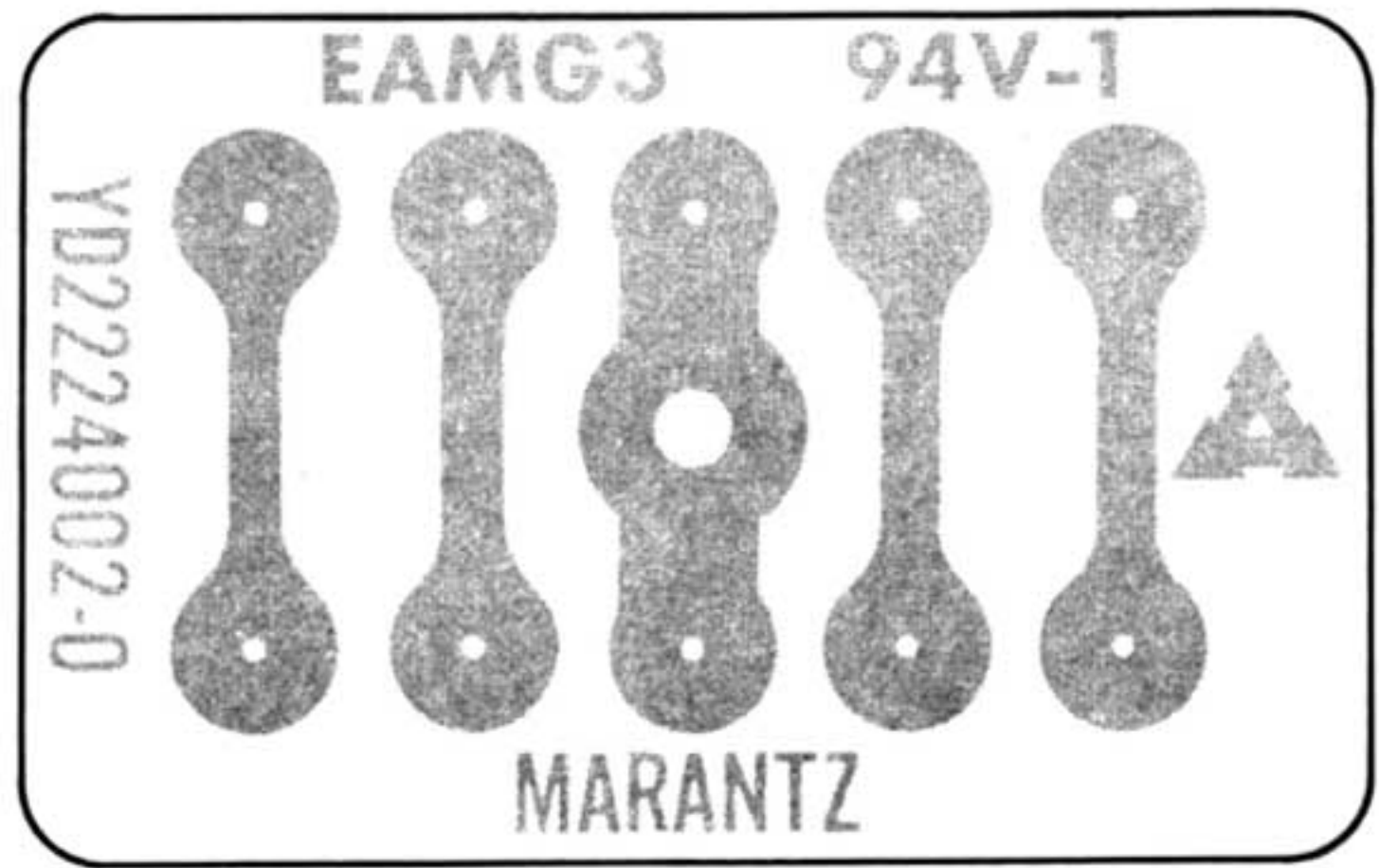
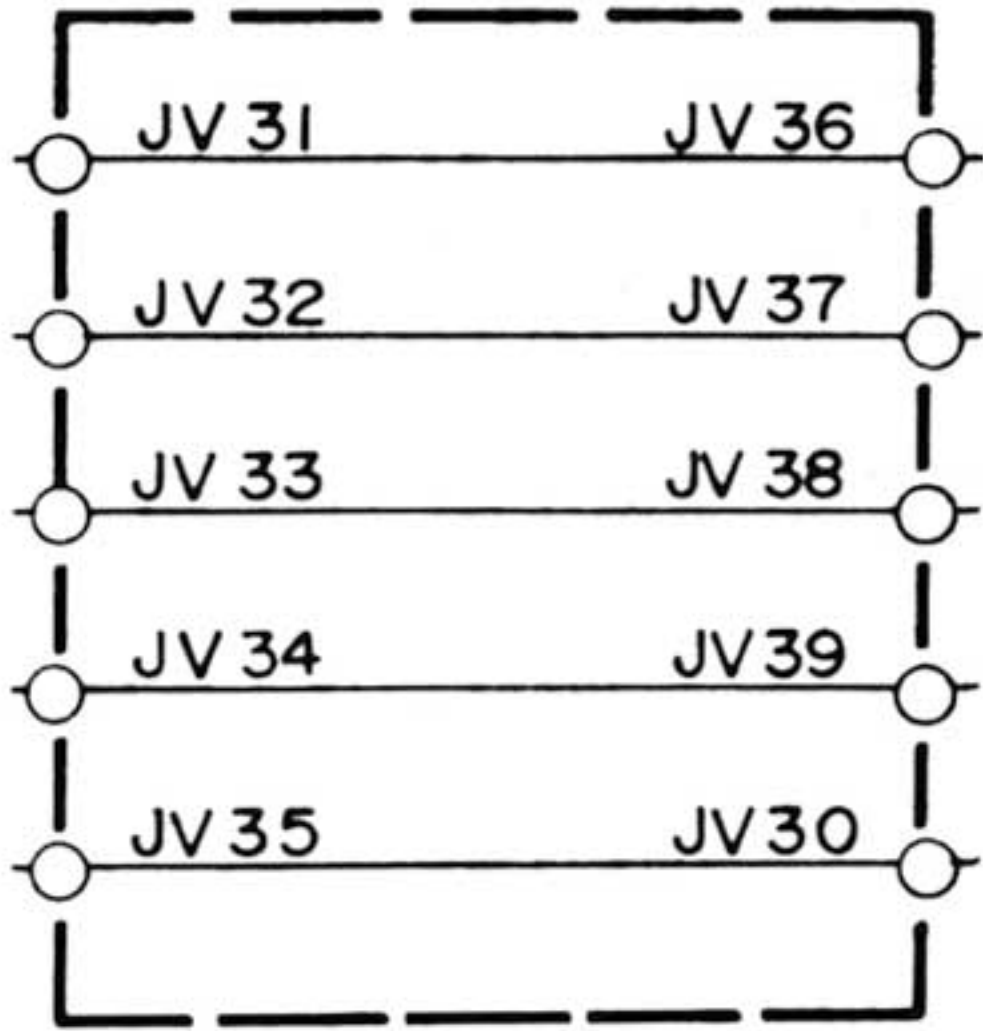
# 4. DIAGRAMS

## 4-1. POWER SUPPLY BOARD SCHEMATIC DIAGRAM AND COMPONENT LOCATIONS - P800

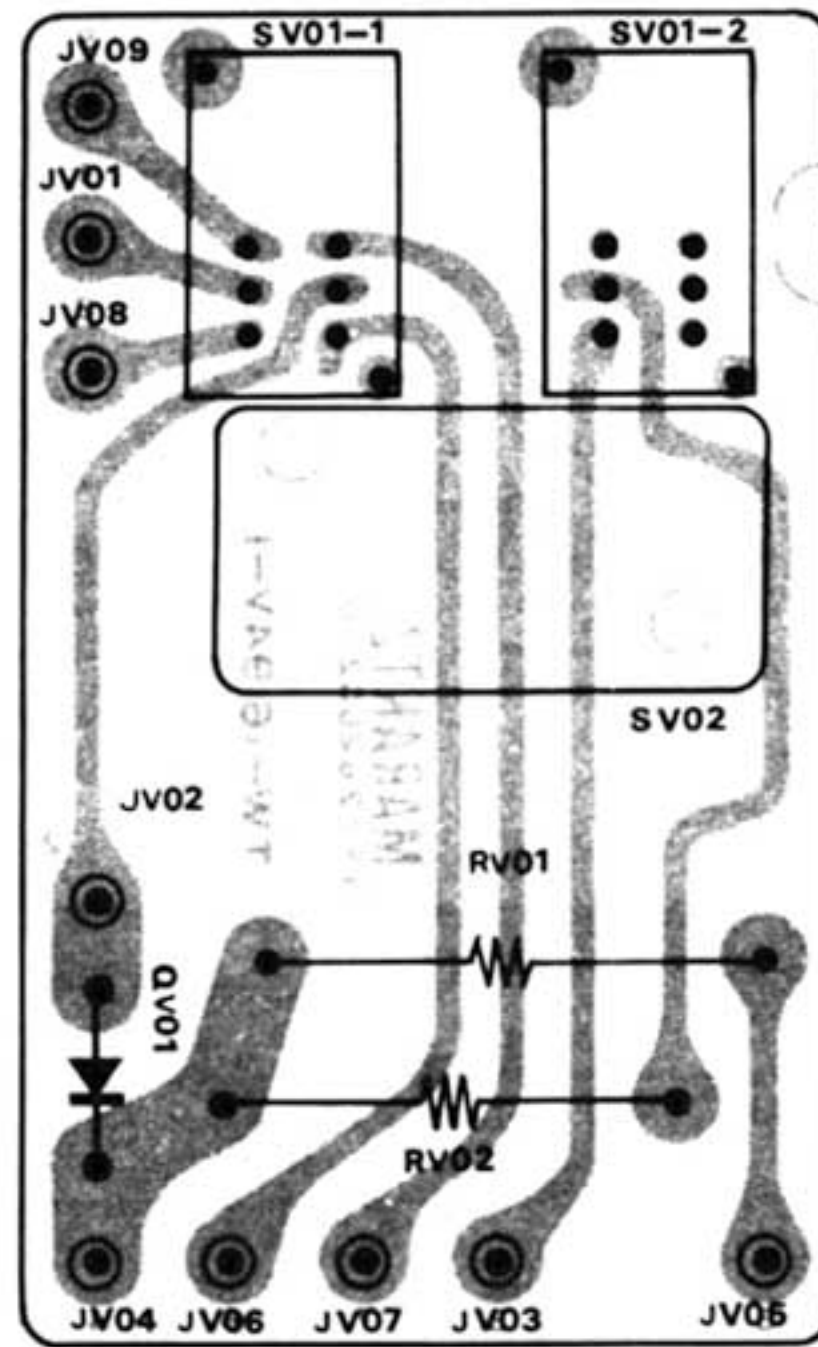
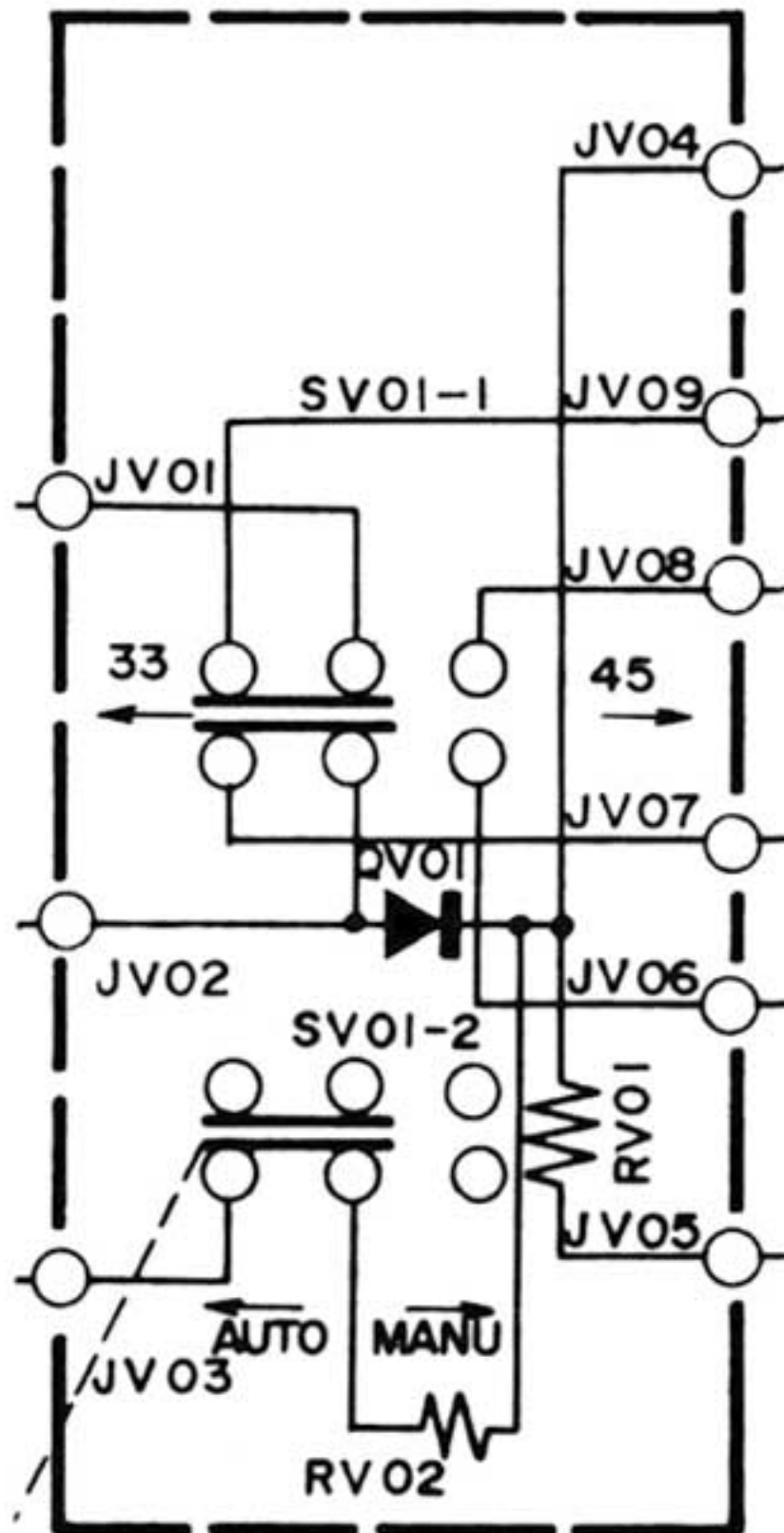




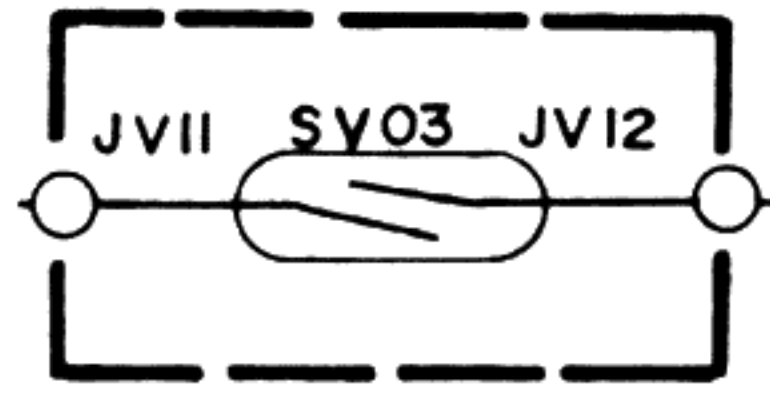
4.2. CONNECTOR BOARD SCHEMATIC DIAGRAM AND COMPONENT LOCATIONS - PV03



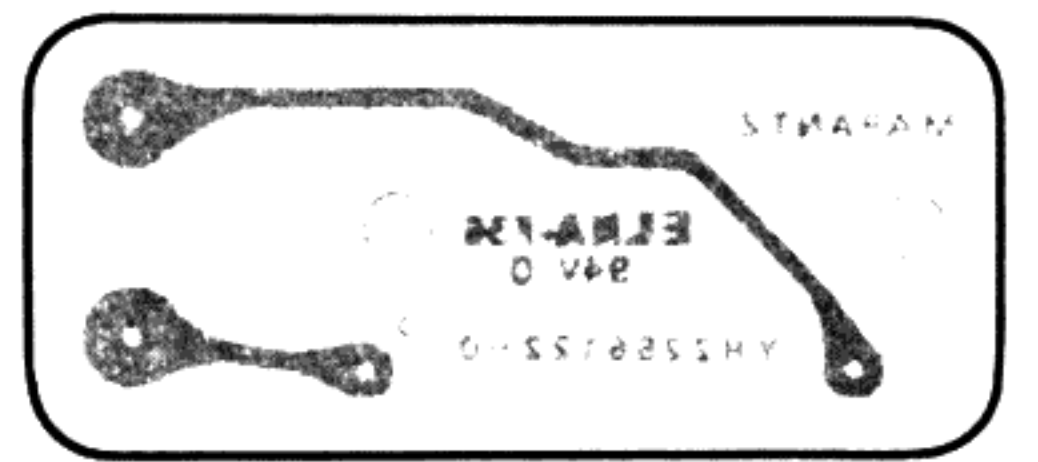
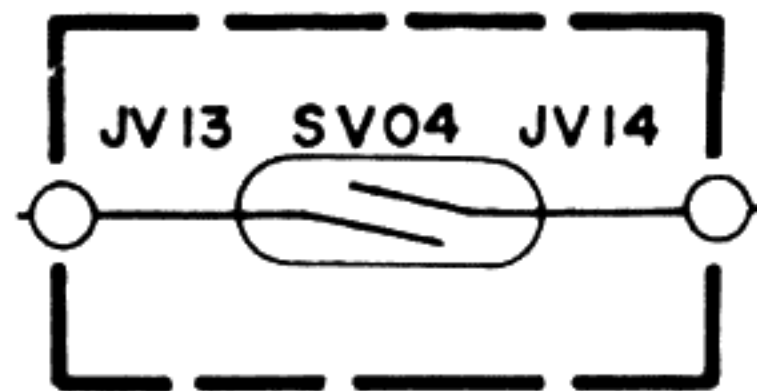
4.3 AUTO/MANUAL BOARD SCHEMATIC DIAGRAM AND COMPONENT LOCATIONS-PV04



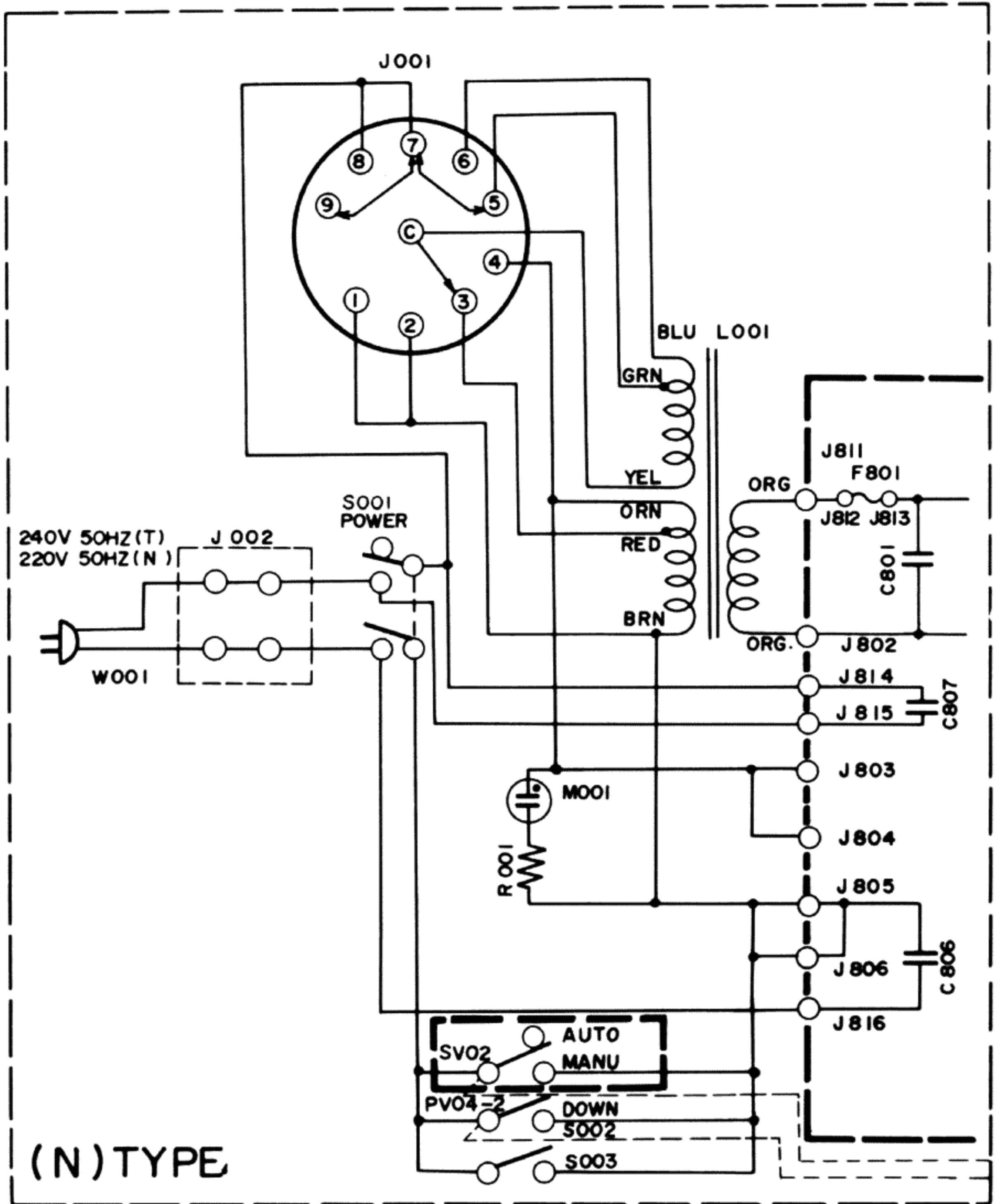
#### 4.4 LEAD SWITCH BOARD SCHEMATIC DIAGRAM AND COMPONENT LOCATIONS-PV01

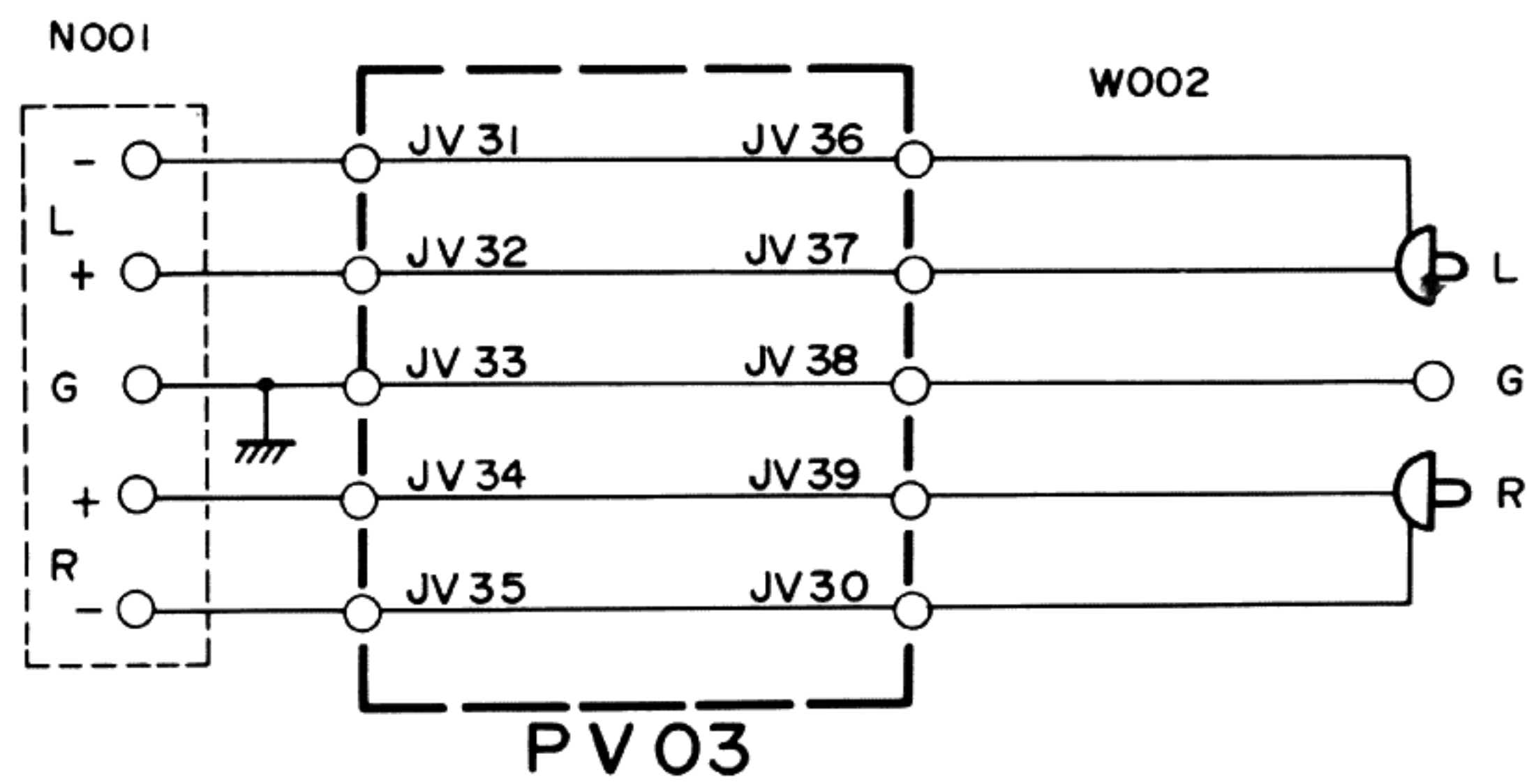
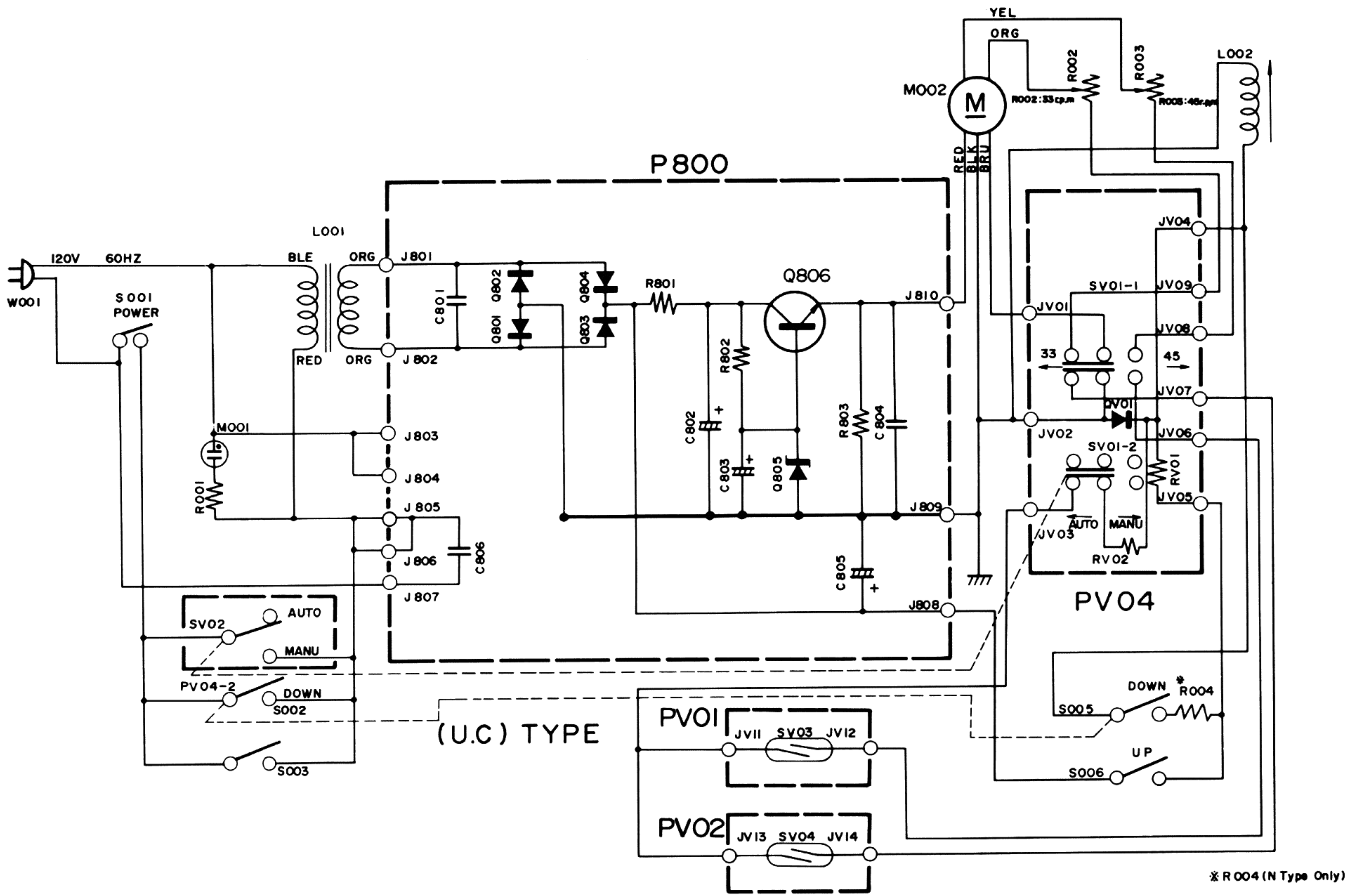


#### 4.5 LEAD SWITCH BOARD SCHEMATIC DIAGRAM AND COMPONENT LOCATIONS-PV02



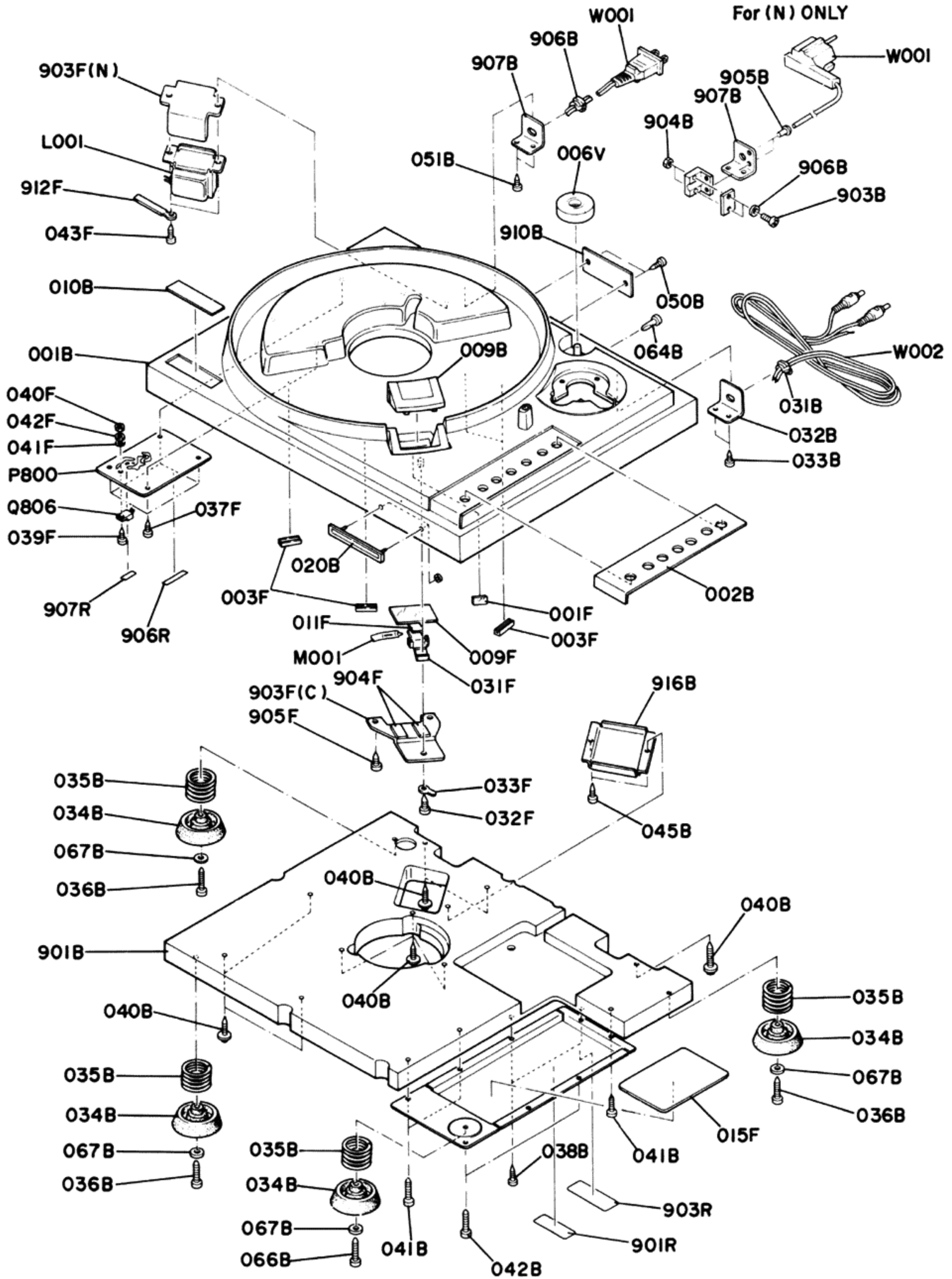
# 4.6 SCHEMATIC DIAGRAM





# 5. EXPLODED VIEWS AND PARTS LIST

## 5.1 [C01-99] CASE AND GENERAL PARTS



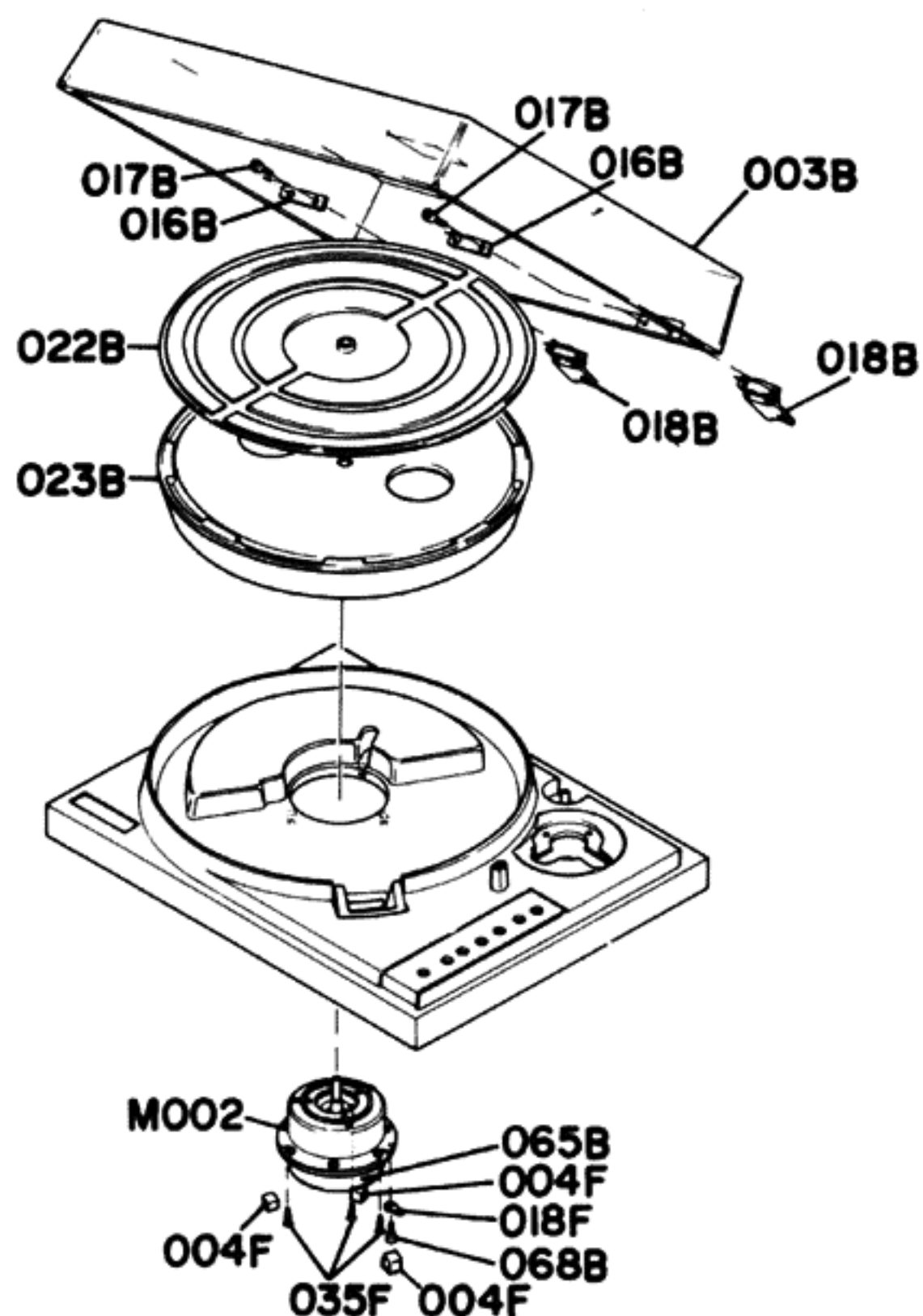
- (U) for U.S.A.
- (C) for Canada
- (N) for Europe

REF. DESIG.	Q'TY			PART NO.	DESCRIPTION
	U	C	N		
A	1	1	1	2262064400	Case Assembly
001B	1	1	1	2262064013	Case
002B	1	1	1	2262063013	Escutcheon
009B	1	1	1	2224158010	Window
010B	1	1	1	2262203010	Name Plate
020B	1	1	1	2988251014	Badge
009F	1	1	1	2224274010	Reflector
011F	1	1	1	2224056020	Buffer
031F	1	1	1	2224104010	Retainer
032F	1	1	1	51280308B0	P.H. Tapped Screw P3 x 8
C			1	2262160400	Bracket Assembly
905B			2	55060305S0	T.R. Rivet
907B			1	2262160050	Bracket
908B			1	2821259010	Bushing
031B	1	1	1	1455259070	Bushing
032B	1	1	1	2224160042	Bracket
033B	2	2	2	51280308B0	B.H. Tapped Screw B3 x 8
034B	4	4	4	2224057010	Leg
035B	4	4	4	2224115030	Spring
036B	3	3	3	51523120A0	R.H. Wood Screw
038B	2	2	2	51523113A0	R.H. Wood Screw
040B	9	9	9	51270019B0	P.H. Tapped Screw, F
041B	2	2	2	51380330P0	P.H. Tapped Screw P3 x 30
042B	3	3	3	51300308B0	P.H. Tapped Screw P3 x 8
045B	2	2	2	51523113A0	R.H. Wood Screw
047B	1	1	1	2262257013	Lid
050B	2	2	2	51770308B0	OS Screw
051B	2	2	2	51280308B0	B.H. Tapped Screw B3 x 8
064B	1	1	1	2262259010	Bushing
066B	1	1	1	51380314P0	P.H. Tapped Screw P3 x 14
067B	4	4	4	54110149A0	Flat Washer, L
901B	1	1		2262004013	Table
901B			1	2262004023	Table
903B			2	51060312A9	P.H.M. Screw P3 x 12
904B			2	53110303A9	Hexagon Nut
906B	1	1		1455259030	Bushing
906B			2	54050300R0	T.L. Washer OR
907B	1	1		2224160032	Bracket
910B	1			2262265010	Indicator
910B			1	2262265020	Indicator
910B			1	2262265030	Indicator
916B	1	1		2224053130	Cover
916B			1	2262053010	Cover
003F	4	4	4	2224259010	Bushing

REF. DESIG.	Q'TY			PART NO.	DESCRIPTION
	U	C	N		
001F	1	1	1	2224158020	Window
015F	1	1	1	2262120020	Insulator
033F	1	1	1	62030039W0	Lug
037F	4	4	4	51280308B0	B.H. Tapped Screw B3 x 8
039F	1	1	1	51100308B9	B.H.M. Screw B3 x 8
040F	1	1	1	53110303E9	Hexagon Nut
041F	1	1	1	54050300R0	T.L. Washer OR
042F	1	1	1	54020301B0	Flat Washer P
043F	2	2	2	51100308A9	B.H.M. Screw B3 x 8
903F			1	2224005040	Clamper
903F			1	2224109012	Shield
904F			2	2224056013	Buffer
905F			2	51300308B0	P.H. Tapped Screw P3 x 8
912F			2	2871005010	Clamper
901R			1	3889861010	Label
903R			1	2882861020	Label
903R		1		2911861180	Label
903R	1			3889861010	Label
906R			1	9512601080	Label
907R			1	9512601170	Label
006V	1	1	1	2272362020	Adaptor
L001	1	1		TS14808180	Power Transformer
L001			1	TS14808190	Power Transformer
M001	1	1	1	IN21200040	Lamp Neon AC 120V
W001			1	YC01800160	A.C. Power Cord
W001	1	1		YC02000140	A.C. Power Cord
W002	1	1	1	YB01000060	Connective Cord
P800	1	1	1	YF22620010	P.W. Board, Power Supply
Q806	1	1	1	HT403311F0	Transistor 2SD331F

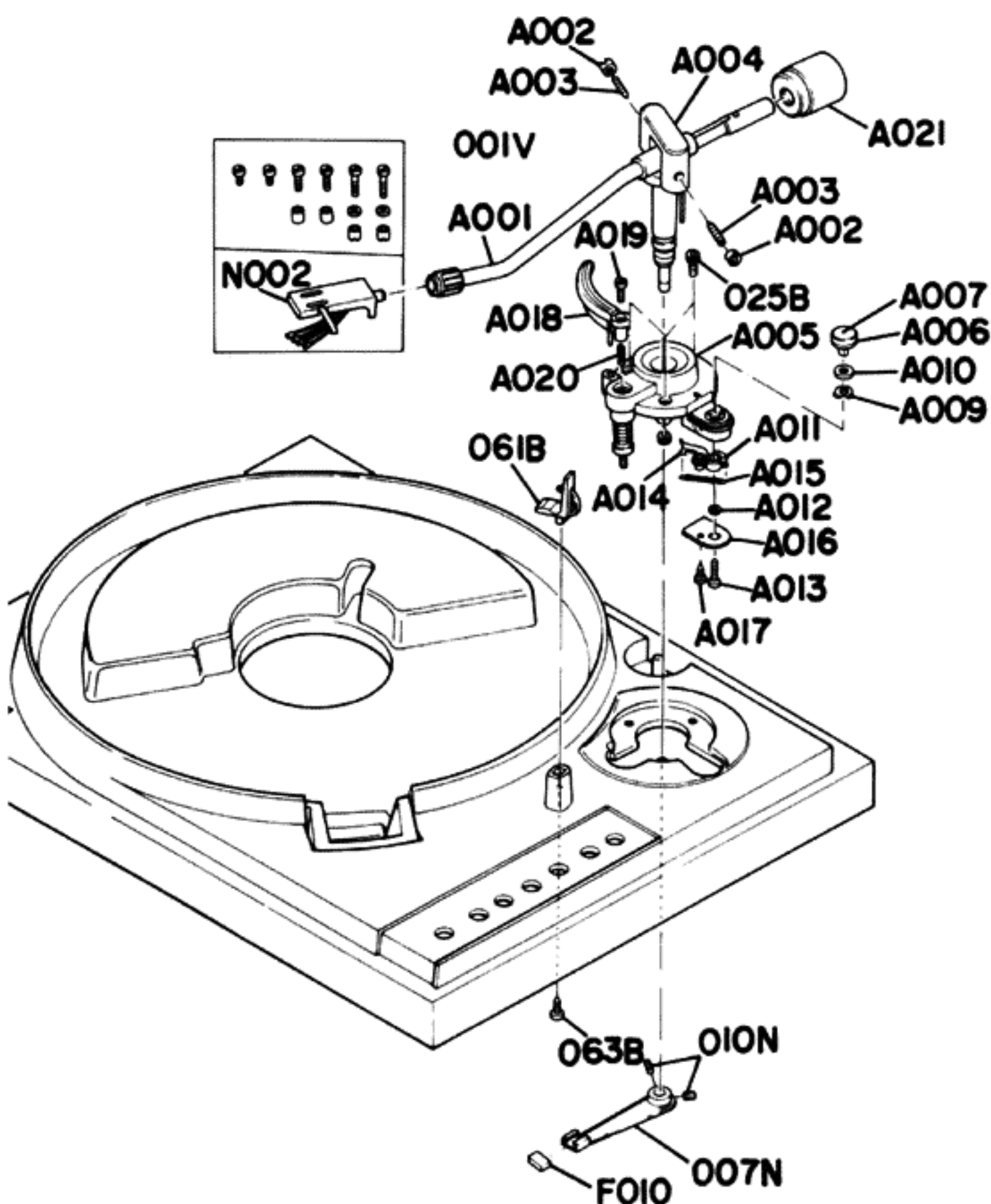
• (U) for U.S.A.  
 • (C) for Canada  
 • (N) for Europe

### 5.2 [P01-99] TURN TABLE AND MOTOR



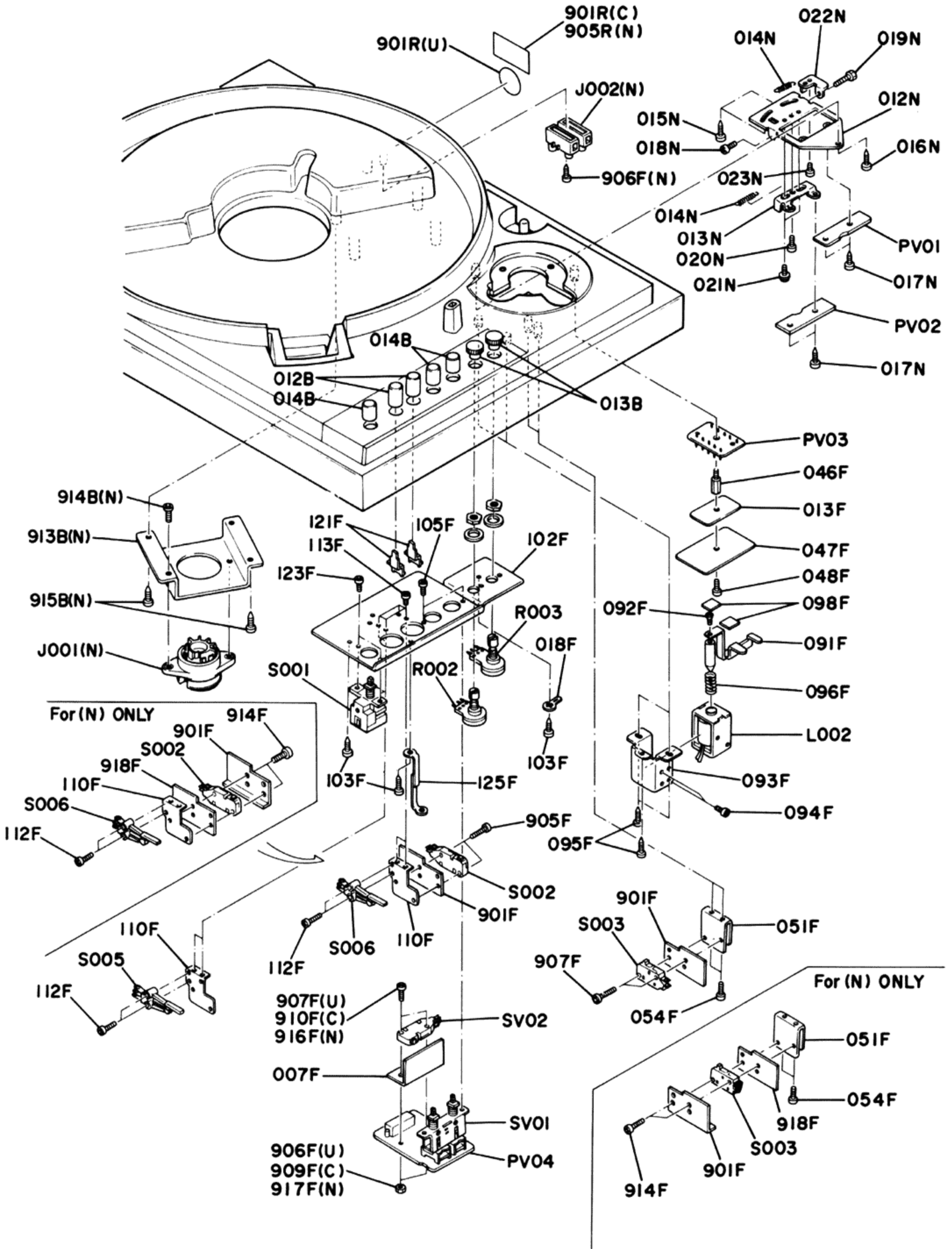
REF. DESIG.	Q'TY			PART NO.	DESCRIPTION
	U	C	N		
B	1	1	1	2224053400	Dust Cover Assembly
003B	1	1	1	2224053513	Cover, K
016B	2	2	2	2224160260	Bracket
017B	4	4	4	51100410S9	B.H.M. Screw B4 x 10
018B	2	2	2	2224153510	Hinge, K
022B	1	1	1	2224107020	Sheet
023B	1	1	1	2224165010	Turntable
065B	1	1	1	2224257022	Lid
068B	1	1	1	51280306B0	B.H. Tapped Screw B3 x 6
004F	3	3	3	2891056010	Buffer
018F	1	1	1	62030049W0	Lug
035F	3	3	3	51340325P0	F.H. Tapped Screw F3 x 25
M002	1	1	1	PM23300090	Phonomotor Unit DC 18V 80mA

### 5.3 [P02-99] TONE ARM



REF. DESIG.	Q'TY			PART NO.	DESCRIPTION
	U	C	N		
A001	1	1	1	2262002210	Pipe Arm Assembly
A002	2	2	2	2224104210	Nut
A003	2	2	2	2224104220	Pivot M3 x 16
A004	1	1	1	2262104210	Pivot Ring Assembly
A005	1	1	1	2262160210	Base Bracket Assembly
A006	1	1	1	2224154210	Knob, IFC
A007	1	1	1	2256265210	Plate, IFC
A009	1	1	1	2256118220	Washer
A010	1	1	1	2256118210	Washer
A011	1	1	1	2256104210	Cam, IFC
A012	1	1	1	54020201E0	Washer
A013	1	1	1	51060214E9	Screw 2 x 14
A014	1	1	1	2224354210	Lever, IFC
A015	1	1	1	2224115210	Spring, IFC
A016	1	1	1	2262053210	Cover
A017	1	1	1	51380205P0	P.H. Tapped Screw P2 x 5
A018	1	1	1	2262002220	Arm Assembly
A019	1	1	1	51072612S9	Screw 2.6 x 12
A020	1	1	1	2262115210	Spring
A021	1	1	1	2224008210	Weight Assembly
N002	1	1	1	YS02040040	Head Shell
025B	3	3	3	52730412S9	H.S. Head Bolt H3 x 12
061B	1	1	1	2224104240	Retainer
063B	1	1	1	51380208P0	P.H. Tapped Screw P2 x 8
007N	1	1	1	2256002530	Arm
010N	2	2	2	51690303Q0	Socket Screw, HP 3 x 3
F010	1	1	1	FD20100010	Ferrite Magnet

5.4 [P03-99] PRYS ASSEMBLED ON THE CHASSIS



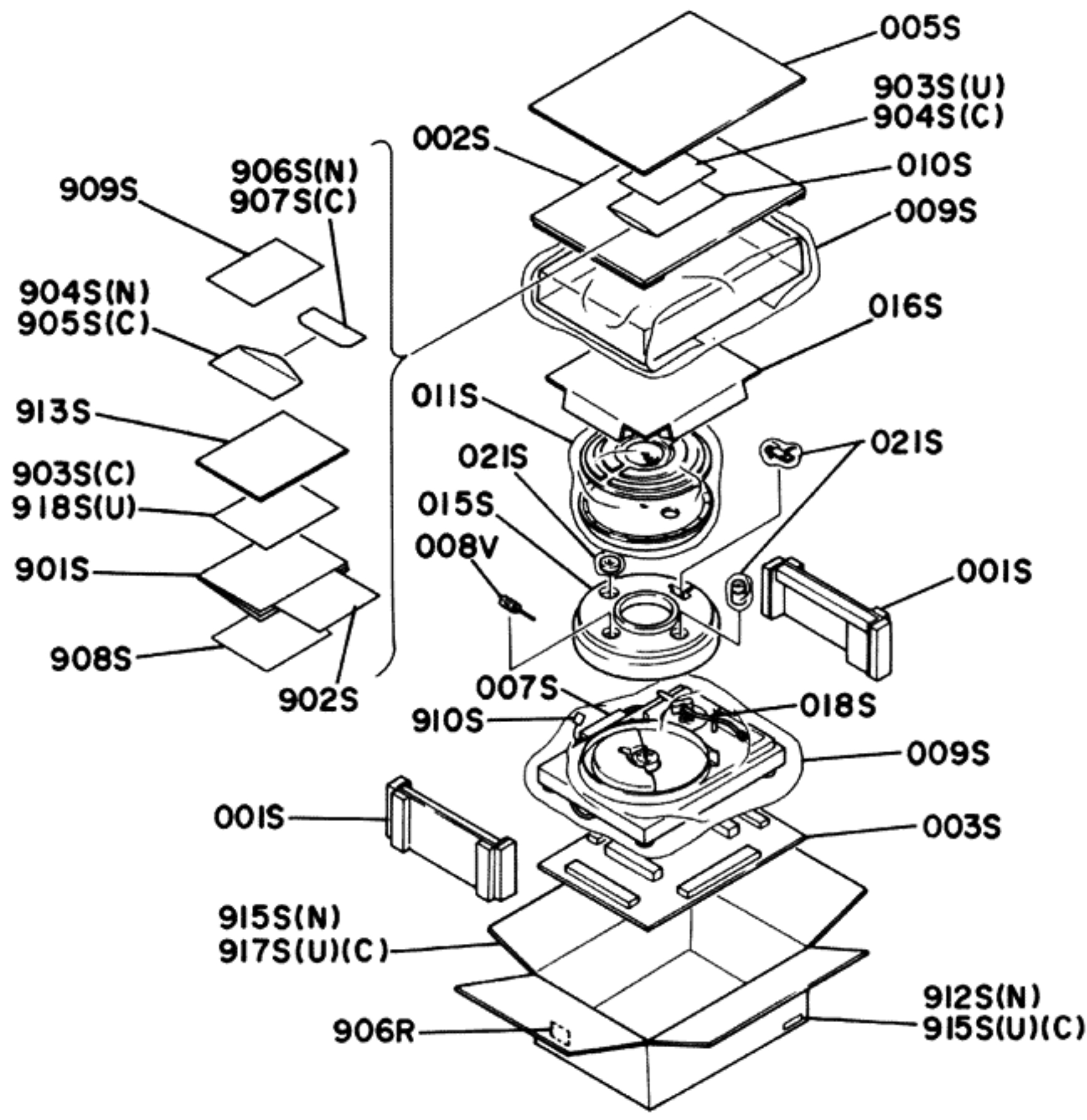


- (U) for U.S.A.
- (C) for Canada
- (N) for Europe

REF. DESIG.	Q'TY			PART NO.	DESCRIPTION
	U	C	N		
012B	2	2	2	2963154020	Knob
013B	2	2	2	2224154030	Knob
014B	3	3	3	2963154030	Knob
913B			1	2224160050	Bracket
914B			2	51060306A9	P.H.M. Screw P3 x 6
915B			4	51280308B0	B.H. Tapped Screw B3 x 8
007F	1	1	1	2262120010	Insulator
013F	1	1	1	2224120020	Insulator
018F	1	1	1	62030049W0	Lug
046F	1	1	1	2262101010	Support
047F	1	1	1	2256109010	Shield
048F	1	1	1	51100305A9	B.H.M. Screw B3 x 5
051F	1	1	1	2262160022	Bracket
054F	2	2	2	51280308B0	B.H. Tapped Screw B3 x 8
091F	1	1	1	2262354020	Lever
092F	1	1	1	51040306A9	F.H.M. Screw F3 x 6
093F	1	1	1	2262160030	Bracket
094F	2	2	2	51100304A9	B.H.M. Screw B3 x 4
095F	3	3	3	51280308B0	B.H. Tapped Screw B3 x 8
096F	1	1	1	2262115020	Spring
098F	2	2	2	2262056030	Buffer
102F	1	1	1	2262160010	Bracket
103F	3	3	3	51280308B0	B.H. Tapped Screw B3 x 8
105F	2	2	2	51100306A9	B.H.M. Screw B3 x 6
110F	2	2	2	2262160042	Bracket
112F	4	4	4	51100208A0	B.H.M. Screw B2 x 8
113F	4	4	4	51100306A9	B.H.M. Screw B3 x 6
121F	2	2	2	2262354012	Lever
123F	2	2	2	51100306A9	B.H.M. Screw B3 x 6
125F	1	1	1	2262005020	Clamper
901F			2	2255120032	Insulator
901F	2	2		2256120050	Insulator
905F	2	2		51100316B9	B.H.M. Screw B3 x 16
906F	1			53110303E9	Hexagon Nut
907F	2			51100316B9	B.H.M. Screw B3 x 16
909F		2		53110303E9	Hexagon Nut
910F		2		51100316B9	B.H.M. Screw B3 x 16
911F	1	1		2262115032	Spring
911F			1	2262115040	Spring
914F			4	50060316B9	Screw
916F			2	50060316B9	Screw
917F			2	53110303E9	Hexagon Nut
918F			2	2256120050	Insulator

REF. DESIG.	Q'TY			PART NO.	DESCRIPTION
	U	C	N		
012N	1	1	1	2256160143	Bracket
013N	1	1	1	2256160192	Bracket
014N	2	2	2	2256115050	Spring
015N	2	2	2	51280308B0	B.H. Tapped Screw B3 x 8
016N	1	1	1	51100306A9	B.H.M. Screw B3 x 6
017N	4	4	4	51100306E9	B.H.M. Screw B3 x 6
018N	1	1	1	51100308A9	B.H.M. Screw B3 x 8
019N	1	1	1	51100314A9	B.H.M. Screw B3 x 14
020N	1	1	1	51100305A9	B.H.M. Screw B3 x 5
021N	2	2	2	51202603A0	P.H.W.H. Screw P2.6 x 3
022N	1	1	1	2262160060	Bracket
023N	1	1	1	51280306B0	B.H. Tapped Screw B3 x 6
901R		1		2457861040	Label
901R	1			9511101060	Label
905R			1	2939861022	Label
J001			1	BY03110010	Plug, Voltage Selector
J002			1	YL09020040	Terminal 2P
L002	1	1	1	ME10430050	Solenoid Coil
R002	1	1	1	RK05020130	Variable Resistor 5K $\Omega$
R003	1	1	1	RK05020130	Variable Resistor 5K $\Omega$
S001	1	1		SP01010180	Push Switch, Power
S001			1	SP02010250	Push Switch, Power
S002			1	SM01020090	Mini Switch
S002	1			SM01020150	Mini Switch
S002		1		SM01020330	Mini Switch
S003			1	SM01020090	Mini Switch
S003	1			SM01020150	Mini Switch
S003		1		SM01020330	Mini Switch
S005	1	1	1	SM01020140	Mini Switch UP/Down
S006	1	1	1	SM01020140	Mini Switch UP/Down
PV01	1	1	1	YF22620020	P.W. Board, Adjustor
SV01	1	1	1	SP02020330	Push Switch
SV02			1	SM01020090	Mini Switch
SV02	1			SM01020150	Mini Switch
SV02		1		SM01020330	Mini Switch

5.5 [H01-99] PACKING MATERIALS



• (U) for U.S.A.  
 • (C) for Canada  
 • (N) for Europe

REF. DESIG.	Q'TY			PART NO.	DESCRIPTION
	U	C	N		
001S	2	2	2	2262803010	Partitioner
002S	1	1	1	2224807012	Reinforcing
003S	1	1	1	2262807022	Reinforcing
005S	1	1	1	2224807032	Reinforcing
007S	2	2	2	2864804010	Sleeve
009S	1	1	1	9014543380	Polyethy Bag
010S	1	1	1	9013025010	Polyethy Bag
011S	1	1	1	9013540010	Polyethy Bag
014S	1	1	1	2224803050	Partitioner
015S	1	1	1	2224803060	Partitioner
016S	1	1	1	2224803072	Partitioner
018S	1	1	1	2256005050	Clamper
021S	3	3	3	9010510010	Polyethy Bag
901S	1			2262851012	Instructions
901S		1	1	2262851312	Instructions
902S	1			2262851022	Instructions
902S			1	2262851030	Instructions
902S		1		2262851052	Instructions
903S	1			2262851060	Instructions
903S			1	2262851070	Instructions

REF. DESIG.	Q'TY			PART NO.	DESCRIPTION
	U	C	N		
903S		1		2886851100	Instructions
904S		1		2262851070	Instructions
904S			1	2818813010	Envelope
905S		1		2918813010	Envelope
906S			1	9630000180	Guarantee Card
907S		1		9630000180	Guarantee Card
908S		1		9650000050	S. Station Cord
909S		1		2818854040	Guarantee Card
910S			1	9560000043	Hang Tag
912S			3	9526019030	Serial No Card
913S	1			2818854024	Guarantee Card
915S			1	2262801010	Packing Case
915S	3			9526019010	Serial No Card
915S		3		9526019020	Serial No Card
917S	1			2262801010	Packing Case
917S		1		2262801150	Packing Case
918S	1			2225813010	Envelope
906R		2		9510901020	Label
008V	1	1	1	2939164010	Adjuster

- (U) for U.S.A.
- (C) for Canada
- (N) for Europe

REF. DESIG.	Q'TY			PART NO.	DESCRIPTION
	U	C	N		
P800	1	1	1	YF22620010	<b>P800-POWER SUPPLY CIRCUIT BOARD</b> P.W. Board, Power Supply
	1			ZZ22620010	P.W. Board Assembly
		1		ZZ22629010	P.W. Board Assembly
			1	ZZ22628010	P.W. Board Assembly
<b>P800-CAPACITORS</b>					
C801	1	1	1	DK18103510	Ceramic 0.01 $\mu$ F $\pm$ 20% 50V
C802	1	1	1	EA10705090	Elect 100 $\mu$ F 50V
C803	1	1	1	EA10702590	Elect 100 $\mu$ F 25V
C804	1	1	1	DK18103510	Ceramic 0.01 $\mu$ F $\pm$ 20% 500V
C805	1	1	1	EA10705090	Elect 100 $\mu$ F 50V
C806		1		DF17223800	Film 0.022 $\mu$ F $\pm$ 20% 1000V
C806		1		DF17473590	Film 0.047 $\mu$ F $\pm$ 20% 125V
C806	1			DF17473600	Film 0.047 $\mu$ F $\pm$ 20% 125V
C807			1	DF17223800	Film 0.022 $\mu$ F $\pm$ 20% 1000V
<b>P800-RESISTORS</b>					
R801	1	1	1	GJ05150020	15 $\Omega$ $\pm$ 5% 2W
R802	1	1	1	RT05182140	1.8K $\Omega$ $\pm$ 5% $\frac{1}{4}$ W
R803	1	1	1	RT05104140	100K $\Omega$ $\pm$ 5% $\frac{1}{4}$ W
<b>P800-SEMICONDUCTORS</b>					
Q801	1	1	1	HD20013100	Diode 10D1
Q802	1	1	1	HD20013100	Diode 10D1
Q803	1	1	1	HD20013100	Diode 10D1
Q804	1	1	1	HD20013100	Diode 10D1
Q805	1	1	1	HD30030090	Zener WZ177
Q806	1	1	1	HT403311F0	Transistor 2SD331F
<b>P800-MISCELLANEOUS</b>					
F801		1		FS10050800	Fuse AC 250V 500mAT
F802		1		FS10020800	Fuse AC 250V 500mAT
J812		1		YJ08000200	Jack, Fuse
J813		1		YJ08000200	Jack, Fuse
J815		1		YL01010040	Terminal
J816		1		YL01010040	Terminal
J818		1		YJ08000200	Jack, Fuse
J819		1		YJ08000200	Jack, Fuse

REF. DESIG.	Q'TY			PART NO.	DESCRIPTION
	U	C	N		
PV01	1	1	1	YH22561210	P.W. Board, Adjuster
	1	1	1	ZZ22561210	P.W. Board Assembly
SV03	1	1	1	SC01010280	Lead Switch
PV02	1	1	1	YH22561220	P.W. Board, Adjuster
	1	1	1	ZZ22561220	P.W. Board Assembly
SV04	1	1	1	SC01010280	Lead Switch
PV03	1	1	1	YD22240020	P.W. Board, Connective
	1	1	1	ZZ22240020	P.W. Board Assembly
PV04	1	1	1	YF22620020	P.W. Board, Auto/Manual
	1	1	1	ZZ22620020	P.W. Board Assembly
RV01	1	1	1	GS10151050	Resistor 150 $\Omega$ $\pm$ 10% 5W
RV02	1	1	1	GJ05047010	Resistor 4.7 $\Omega$ $\pm$ 5% 1W
QV01	1	1	1	HD20003210	Diode 1S2471
SV01	1	1	1	SP02020330	Push Switch 33/45, Auto/Manual

(W01-99)	Assembly and Wiring
(T01-99)	Adjustment
(X01-00)	Correction



**marantz.**

**MARANTZ CO., INC. • P.O. BOX 577 • CHATSWORTH, CALIFORNIA • 91311**



A WHOLLY-OWNED SUBSIDIARY OF SUPERSCOPE INC., CHATSWORTH, CALIFORNIA • 91311

CD-4 is a trademark of Victor Company of Japan, Ltd.