



Service Bulletin

No. : MZ08-064

Date: October 6, 2008

Model: AV8003

Subject: Service spare part addition information.

Symptom: The part number of Extension FFC will be added to the Service parts. PWB can be removed from a unit and now checked.

Solution: The Extension FFC comes in several types depending on the number of PINs and the length. That is why each comes marked in the same color with the location specified on the wiring diagram. Please check the attached wiring diagram on the following pages before use.

Parts:

POS. NO.	VERS. COLOR	PART NO. (MZ)	PART NAME	DESCRIPTION
		943606004580M	EXTENSION FFC KIT	AV8003 EXTENSION FFC KIT Factory code no. non

CONFIDENTIALITY NOTICE:

The information contained in this document is intended for the exclusive use by MARANTZ Authorized Service Centers and their employees. This document may contain information that is privileged, confidential and may be protected from disclosure under applicable laws and terms of the MARANTZ Service Agreement. Any distribution, disclosure, dissemination or copying of this document and the information it contains is prohibited. No responsibility will be accepted by MARANTZ for any damage, injury or loss resulting from the misuse of the information contained in this document.

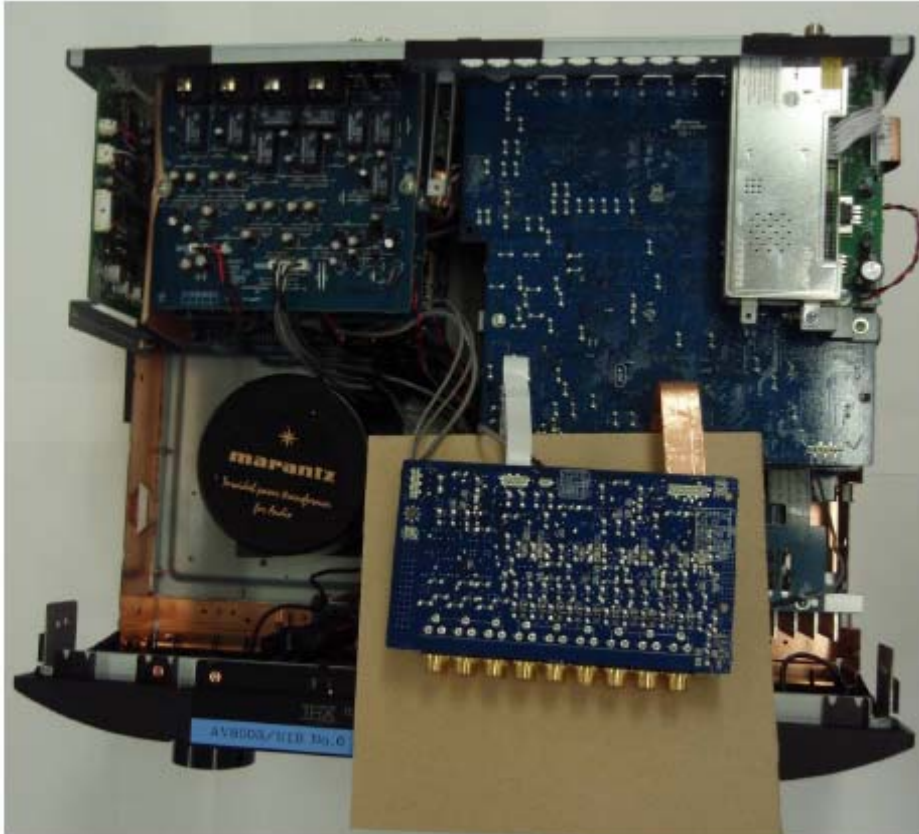
The information contained in this document is intended for the exclusive use by MARANTZ Authorized Service Centers and their employees. This document may contain information that is privileged, confidential and may be protected from disclosure under applicable laws and terms of the MARANTZ Service Agreement. Any distribution, disclosure, dissemination or copying of this document and the information it contains is prohibited. No responsibility will be accepted by MARANTZ for any damage, injury or loss resulting from the misuse of the information contained in this document.

Extension cable part number: 943606004580M

AV8003 EXTENSION FFC KIT

Prepare a suitable insulator board to rest any removed pcb's on during troubleshooting.

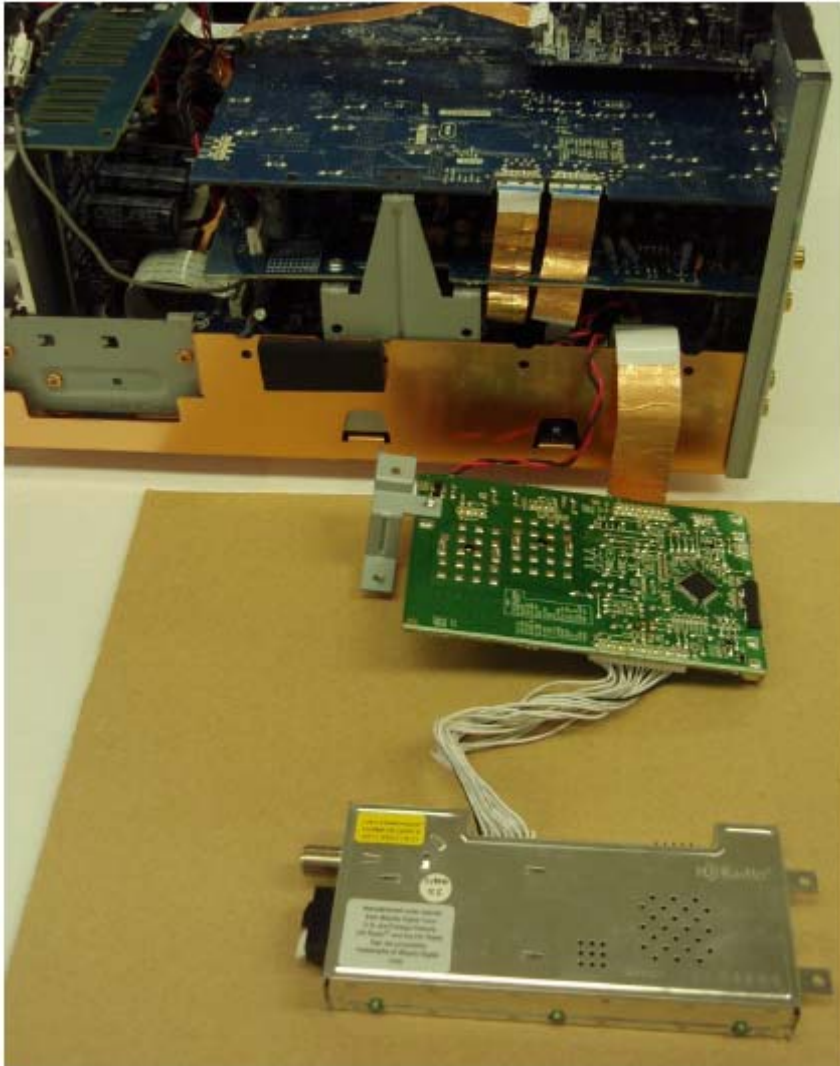
Place the Component PWB on the insulator board.



CONFIDENTIALITY NOTICE:

The information contained in this document is intended for the exclusive use by MARANTZ Authorized Service Centers and their employees. This document may contain information that is privileged, confidential and may be protected from disclosure under applicable laws and terms of the MARANTZ Service Agreement. Any distribution, disclosure, dissemination or copying of this document and the information it contains is prohibited. No responsibility will be accepted by MARANTZ for any damage, injury or loss resulting from the misuse of the information contained in this document.

If you want to check the HD Radio PWB.



Put on the HD Radio PWB onto insulator board.

CONFIDENTIALITY NOTICE:

The information contained in this document is intended for the exclusive use by MARANTZ Authorized Service Centers and their employees. This document may contain information that is privileged, confidential and may be protected from disclosure under applicable laws and terms of the MARANTZ Service Agreement. Any distribution, disclosure, dissemination or copying of this document and the information it contains is prohibited. No responsibility will be accepted by MARANTZ for any damage, injury or loss resulting from the misuse of the information contained in this document.

If you want to check the DSP PWB, Video PWB or HDMI PWB.



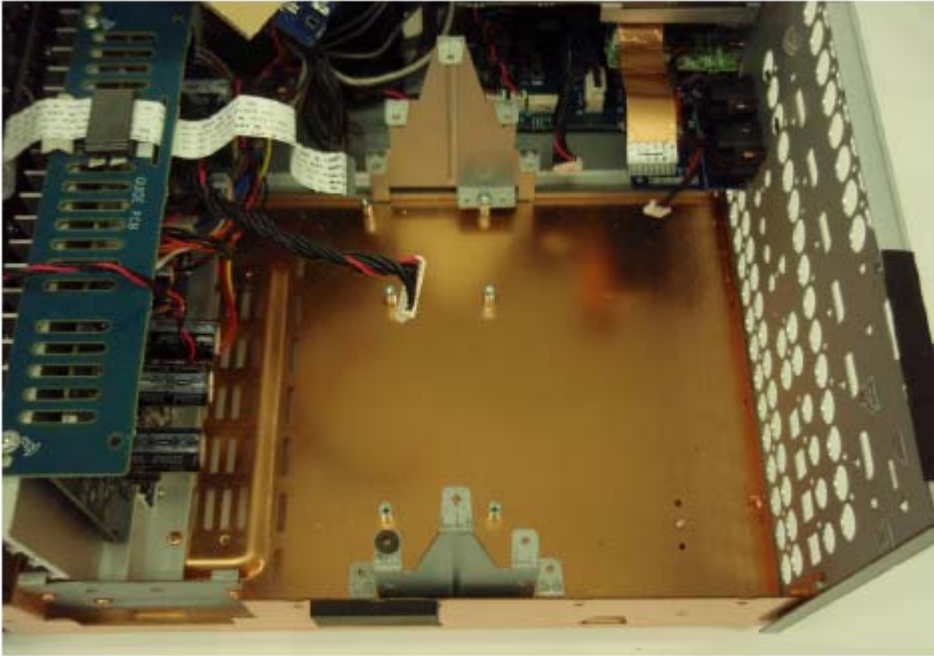
Change FFC : 17P 1.0mm(AV8003 A : Blue) : CN71(DSP) <--->CN72(VIDEO)
Change FFC : 13P 1.0mm(AV8003 B : Red) : CN83(DSP) <--->CN84(HDMI)
Change FFC : 15P 1.0mm(AV8003 C : Green) : CN81(DSP) <--->CN82(HDMI)

Put the Video PWB, HDMI PWB and Component PWB onto the insulator board.

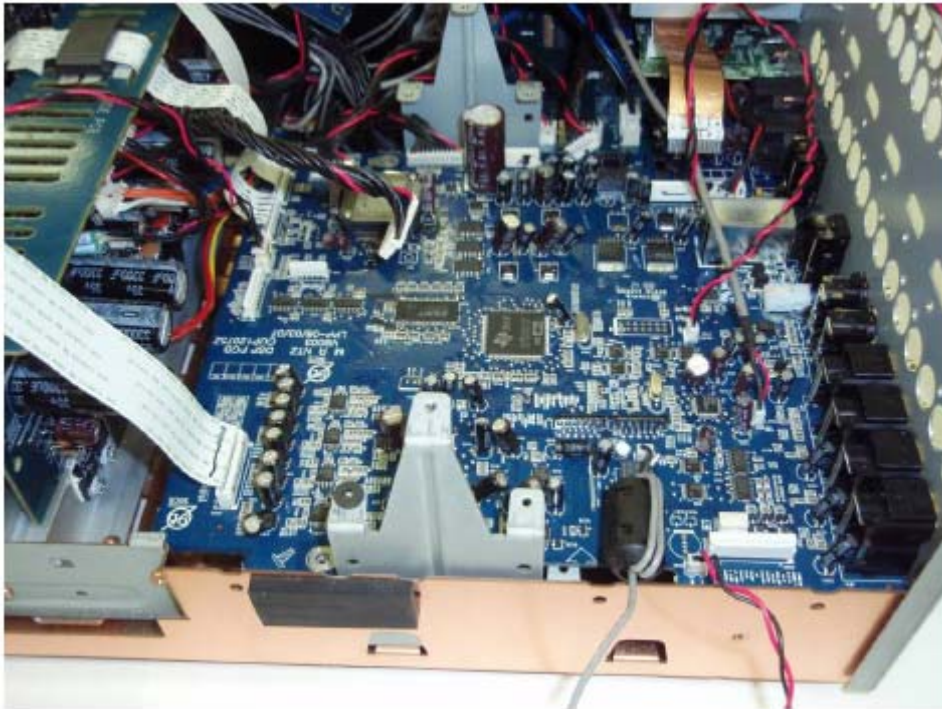
CONFIDENTIALITY NOTICE:

The information contained in this document is intended for the exclusive use by MARANTZ Authorized Service Centers and their employees. This document may contain information that is privileged, confidential and may be protected from disclosure under applicable laws and terms of the MARANTZ Service Agreement. Any distribution, disclosure, dissemination or copying of this document and the information it contains is prohibited. No responsibility will be accepted by MARANTZ for any damage, injury or loss resulting from the misuse of the information contained in this document.

If you want to check the Input PWB.



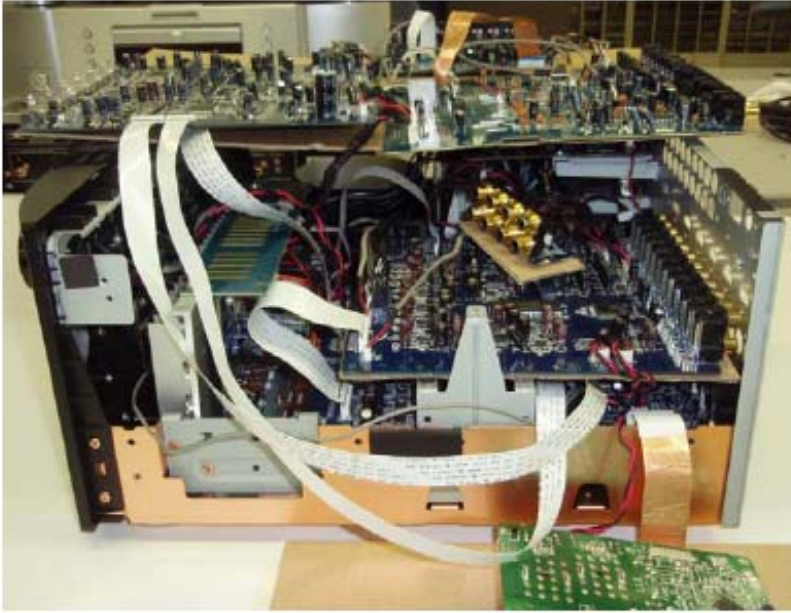
Take out the Input PWB.



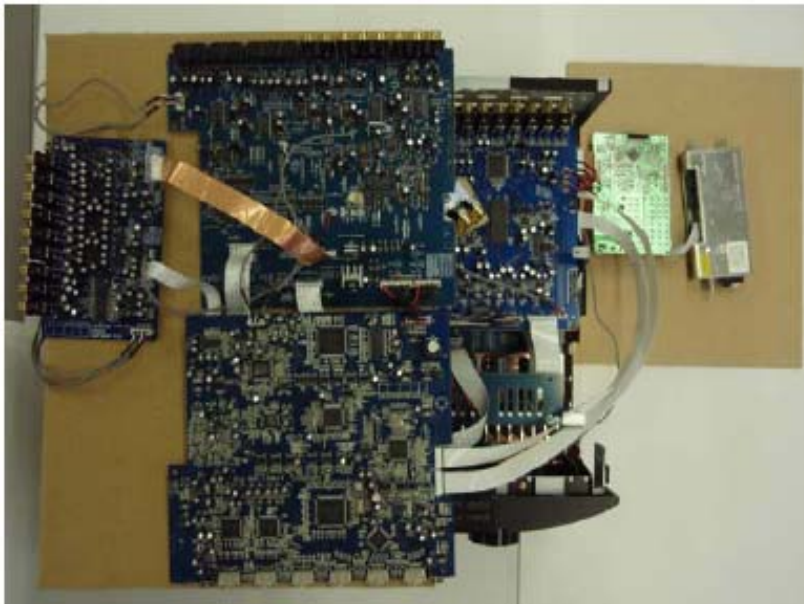
Install the DSP PWB.

CONFIDENTIALITY NOTICE:

The information contained in this document is intended for the exclusive use by MARANTZ Authorized Service Centers and their employees. This document may contain information that is privileged, confidential and may be protected from disclosure under applicable laws and terms of the MARANTZ Service Agreement. Any distribution, disclosure, dissemination or copying of this document and the information it contains is prohibited. No responsibility will be accepted by MARANTZ for any damage, injury or loss resulting from the misuse of the information contained in this document.



Put the Input PWB onto the insulator board and install the other PWB.



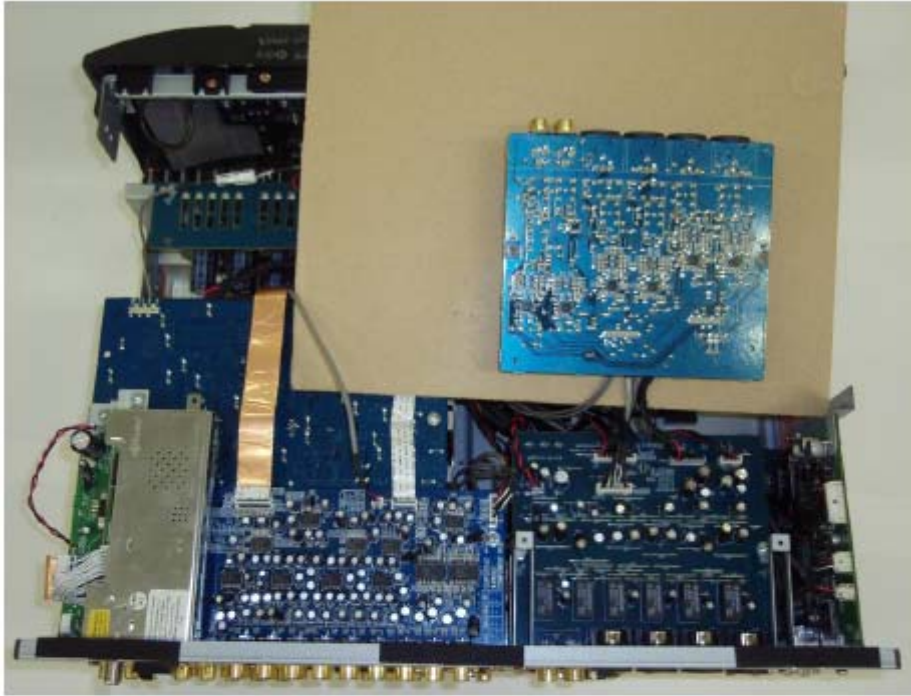
Change FFC: 17P 1.0mm (AV8003 A: Blue): CN71 (DSP) <--->CN72 (VIDEO)
Change FFC: 13P 1.0mm (AV8003 B: Red): CN83 (DSP) <--->CN84 (HDMI)
Change FFC: 15P 1.0mm (AV8003 C: Green): CN81 (DSP) <--->CN82 (HDMI)

Put the Input PWB, Video PWB, HDMI PWB and Component PWB onto the insulator.

CONFIDENTIALITY NOTICE:

The information contained in this document is intended for the exclusive use by MARANTZ Authorized Service Centers and their employees. This document may contain information that is privileged, confidential and may be protected from disclosure under applicable laws and terms of the MARANTZ Service Agreement. Any distribution, disclosure, dissemination or copying of this document and the information it contains is prohibited. No responsibility will be accepted by MARANTZ for any damage, injury or loss resulting from the misuse of the information contained in this document.

If you want to check the Preout PWB or Standby PWB.

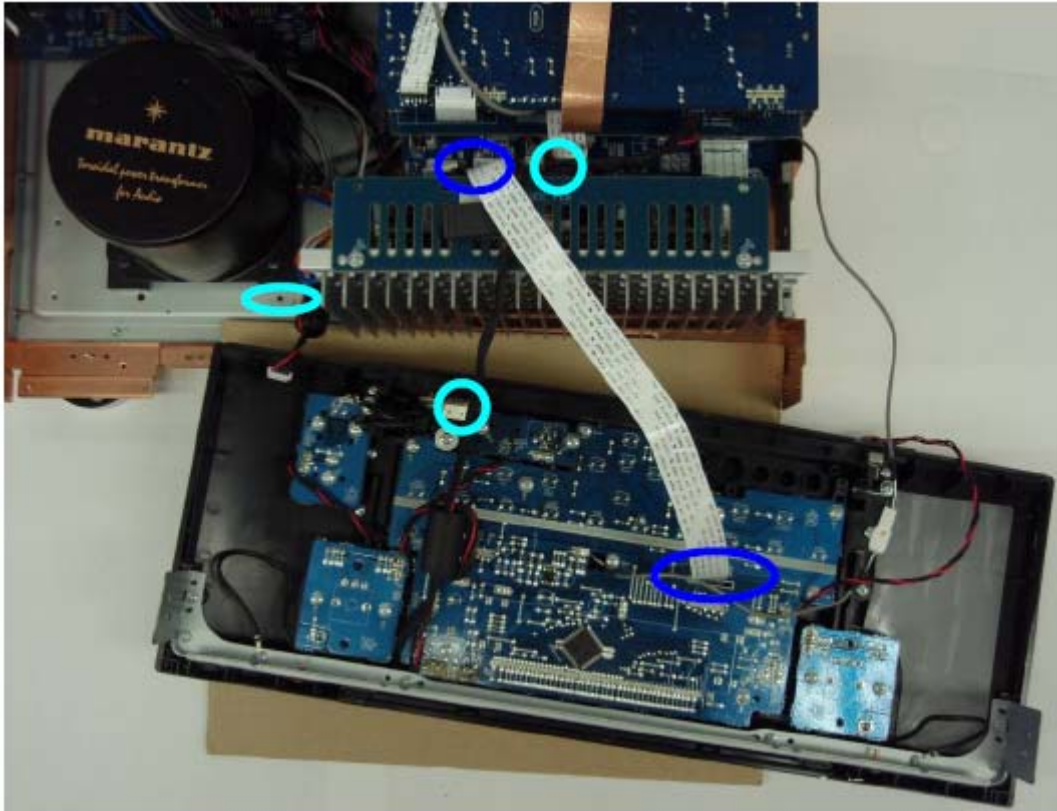


Put the Preout PWB on the insulator board.

CONFIDENTIALITY NOTICE:

The information contained in this document is intended for the exclusive use by MARANTZ Authorized Service Centers and their employees. This document may contain information that is privileged, confidential and may be protected from disclosure under applicable laws and terms of the MARANTZ Service Agreement. Any distribution, disclosure, dissemination or copying of this document and the information it contains is prohibited. No responsibility will be accepted by MARANTZ for any damage, injury or loss resulting from the misuse of the information contained in this document.

If you want to check the Front PWB.



Change FFC : 17P 1.0mm(AV8003 A : Blue) : CN63(DSP) <--->CN64(FRONT)
Disconnect the CN89 (Headphone PWB) and CN17(DSP).

You will place the set into the headphone mode when you disconnect the CN89 (Headphone PWB).

Disconnecting CN17 (DSP) does not flash the HDMI and Pure Direct indicator.

CONFIDENTIALITY NOTICE:

The information contained in this document is intended for the exclusive use by MARANTZ Authorized Service Centers and their employees. This document may contain information that is privileged, confidential and may be protected from disclosure under applicable laws and terms of the MARANTZ Service Agreement. Any distribution, disclosure, dissemination or copying of this document and the information it contains is prohibited. No responsibility will be accepted by MARANTZ for any damage, injury or loss resulting from the misuse of the information contained in this document.