

**marantz®**

## **Service Bulletin**

**No. :** MZ07-090

**Date:** October 2, 2007

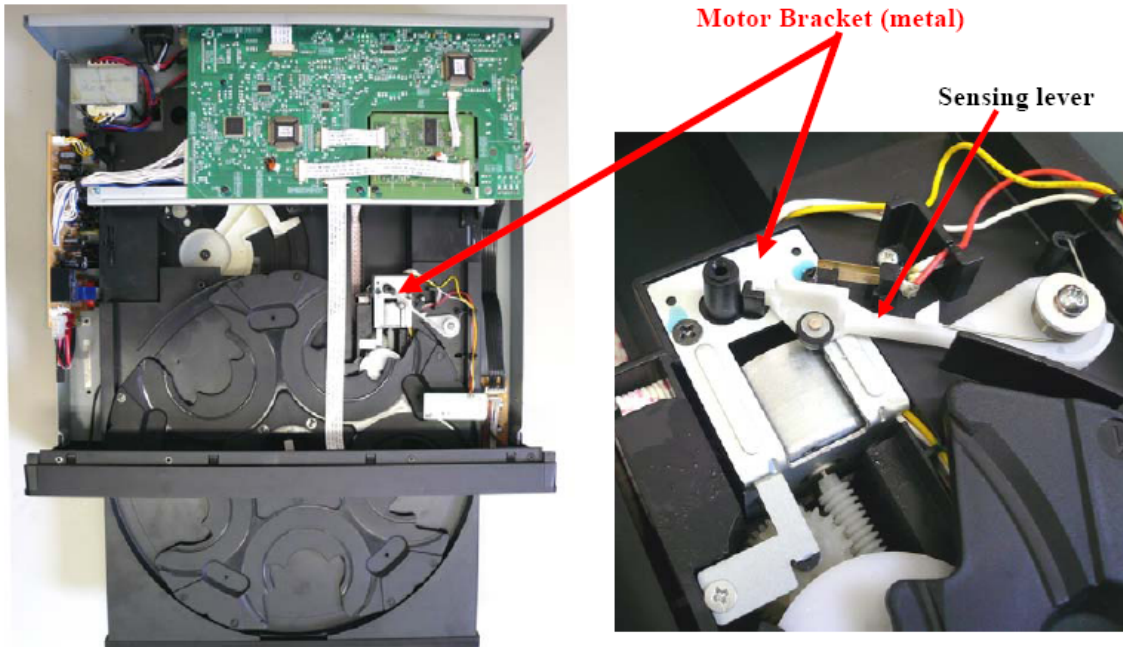
---

**Model:** CC4001

**Subject:** The disc tray sometimes will not open.

**Symptom:** The roulette (tray) rotation position sensing lever is sometimes caught by a burr that remains on the surface of the motor bracket under the lever.

**Solution:** The burr on the surface of the motor bracket (metal) must be filed off. For the procedure, refer to the following.



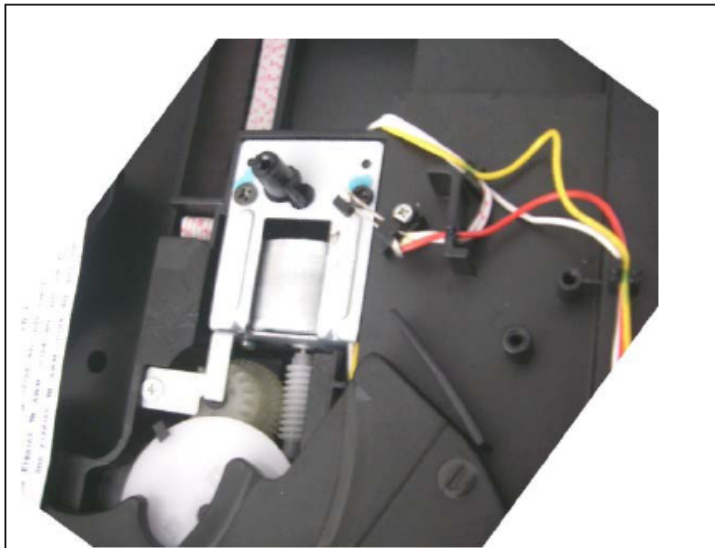
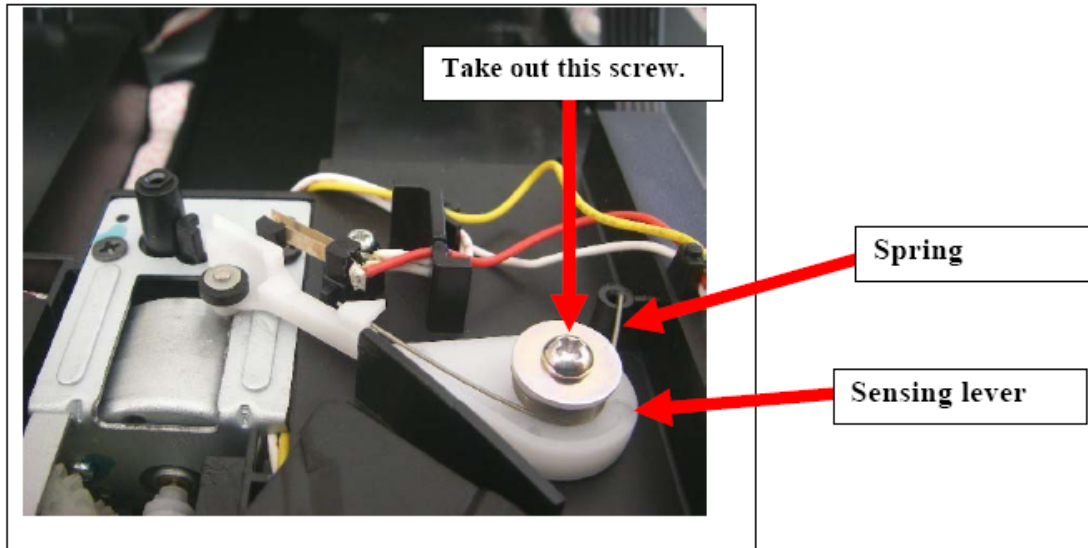
---

### **CONFIDENTIALITY NOTICE:**

The information contained in this document is intended for the exclusive use by MARANTZ Authorized Service Centers and their employees. This document may contain information that is privileged, confidential and may be protected from disclosure under applicable laws and terms of the MARANTZ Service Agreement. Any distribution, disclosure, dissemination or copying of this document and the information it contains is prohibited. No responsibility will be accepted by MARANTZ for any damage, injury or loss resulting from the misuse of the information contained in this document.

## WORKING PROCEDURE

- 1) Turn on the power and open the disc tray. If it will not open, use the forced opening lever on the bottom. (For the procedure, refer to the Service Manual on Page 6.)
- 2) Pull the mains cord out of the socket.
- 3) Take out a screw and remove the sensing lever and spring.

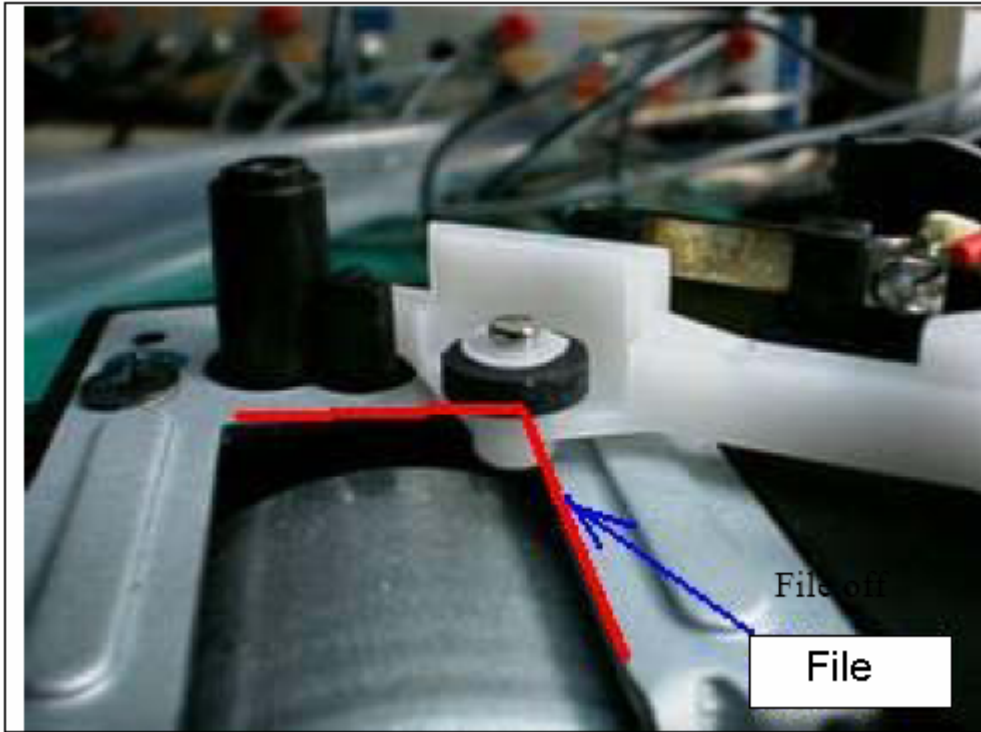


---

## CONFIDENTIALITY NOTICE:

The information contained in this document is intended for the exclusive use by MARANTZ Authorized Service Centers and their employees. This document may contain information that is privileged, confidential and may be protected from disclosure under applicable laws and terms of the MARANTZ Service Agreement. Any distribution, disclosure, dissemination or copying of this document and the information it contains is prohibited. No responsibility will be accepted by MARANTZ for any damage, injury or loss resulting from the misuse of the information contained in this document.

4) File off the burr on the surface of the motor bracket. (See the photo below.) Smooth out the area where the sensing lever moves over.



**Caution:** The motor fixture is greased. When filing, make sure that no metal filings land on the grease or remains in the unit.

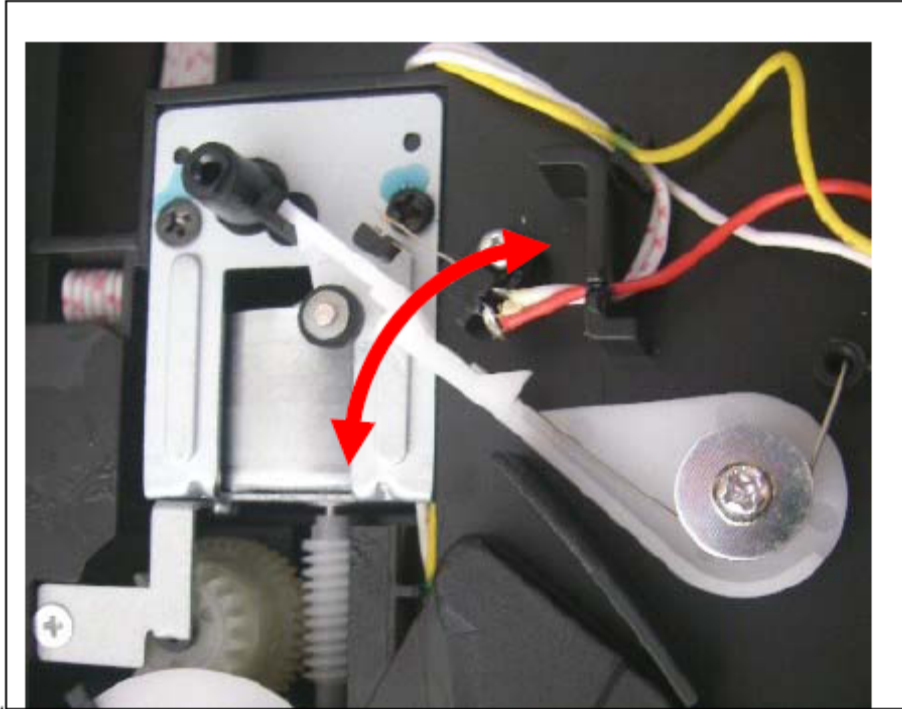
5) Re-attach the sensing lever and spring and screw them down.

6) Manually move the sensing lever and confirm that it moves smoothly.

---

#### **CONFIDENTIALITY NOTICE:**

The information contained in this document is intended for the exclusive use by MARANTZ Authorized Service Centers and their employees. This document may contain information that is privileged, confidential and may be protected from disclosure under applicable laws and terms of the MARANTZ Service Agreement. Any distribution, disclosure, dissemination or copying of this document and the information it contains is prohibited. No responsibility will be accepted by MARANTZ for any damage, injury or loss resulting from the misuse of the information contained in this document.



This is the end of the process. Reassemble the unit and test.

### **Serial Number Range:**

MZ0006xx000001 ~ MZ0007xx008330

All units after this number (MZ0007xx008331 ~) have already been corrected in the production line.

---

#### **CONFIDENTIALITY NOTICE:**

The information contained in this document is intended for the exclusive use by MARANTZ Authorized Service Centers and their employees. This document may contain information that is privileged, confidential and may be protected from disclosure under applicable laws and terms of the MARANTZ Service Agreement. Any distribution, disclosure, dissemination or copying of this document and the information it contains is prohibited. No responsibility will be accepted by MARANTZ for any damage, injury or loss resulting from the misuse of the information contained in this document.