

Service Manual

DV110/N1S

DVD / Tuner

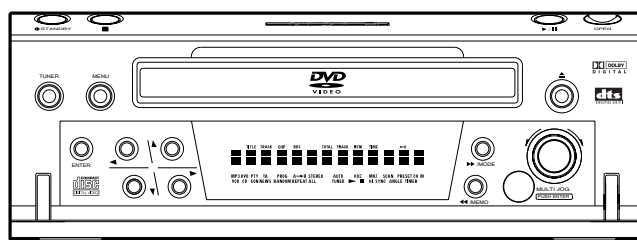
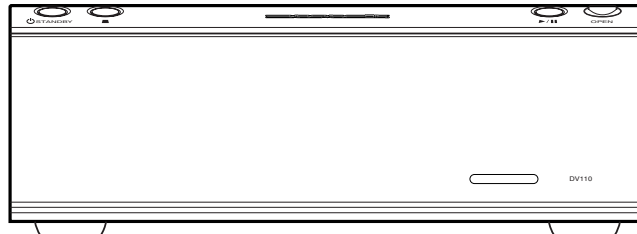


TABLE OF CONTENTS

SECTION	PAGE
1. TECHNICAL SPECIFICATIONS	1
2. SERVICE INFORMATION AND PROCEDURE	4
3. WIRING DIAGRAM	9
4. BLOCK DIAGRAM	11
5. SCHEMATIC DIAGRAM	13
6. PARTS LOCATION	15
7. IC DATA	22
8. EXPLODED VIEW AND PARTS LIST	25
9. ELECTRICAL PARTS LIST	29

Please use this service manual with referring to the user guide (D.F.U.) without fail.

修理の際は、必ず取扱説明書を準備し操作方法を確認の上作業を行ってください。

marantz®

DV110

17AW855010 MIT
First Issue 2003.3

MARANTZ DESIGN AND SERVICE

Using superior design and selected high grade components, **MARANTZ** company has created the ultimate in stereo sound. Only original **MARANTZ** parts can insure that your **MARANTZ** product will continue to perform to the specifications for which it is famous.

Parts for your **MARANTZ** equipment are generally available to our National Marantz Subsidiary or Agent.

ORDERING PARTS :

Parts can be ordered either by mail or by Fax.. In both cases, the correct part number has to be specified.

The following information must be supplied to eliminate delays in processing your order :

1. Complete address
2. Complete part numbers and quantities required
3. Description of parts
4. Model number for which part is required
5. Way of shipment
6. Signature : any order form or Fax. must be signed, otherwise such part order will be considered as null and void.

USA

MARANTZ AMERICA, INC
1100 MAPLEWOOD DRIVE
ITASCA, IL. 60143
USA
PHONE : 630 - 741 - 0300
FAX : 630 - 741 - 0301

EUROPE / TRADING

MARANTZ EUROPE B.V.
P. O. BOX 8744, BUILDING SILVERPOINT
BEEMDSTRAAT 11, 5653 MA EINDHOVEN
THE NETHERLANDS
PHONE : +31 - 40 - 2507844
FAX : +31 - 40 - 2507860

CANADA

LENBROOK INDUSTRIES LIMITED
633 GRANITE COURT,
PICKERING, ONTARIO L1W 3K1
CANADA
PHONE : 905 - 831 - 6333
FAX : 905 - 831 - 6936

PROFESSIONAL AMERICAS

SUPERSCOPE TECHNOLOGIES, INC.
MARANTZ PROFESSIONAL PRODUCTS
2640 WHITE OAK CIRCLE, SUITE A
AURORA, ILLINOIS 60504 USA
PHONE : 630 - 820 - 4800
FAX : 630 - 820 - 8103

PROFESSIONAL AUSTRALIA

TECHNICAL AUDIO GROUP PTY, LTD
43-53 Bridge Rd.,
STANMORE NSW 2048
AUSTRALIA
PHONE : +61 - (0)2 - 9519 - 0900
FAX : +61 - (0)2 - 9519 - 0600

PROFESSIONAL HONG KONG

Jolly ProAudio Broadcast Engineering Ltd.
UNIT 2, 10F, WAH HUNG CENTRE,
41 HUNG TO ROAD, KWUN TONG, KLN.,
HONG KONG
PHONE : 852 - 21913660
FAX : 852 - 21913990

AUSTRALIA

QualiFi Pty Ltd,
24 LIONEL ROAD,
MT. WAVERLEY VIC 3149
AUSTRALIA
PHONE : +61 - (0)3 - 9543 - 1522
FAX : +61 - (0)3 - 9543 - 3677

THAILAND

MRZ STANDARD CO., LTD
746 - 754 MAHACHAI ROAD.,
WANGBURAPAPIROM, PHRANAKORN,
BANGKOK, 10200 THAILAND
PHONE : +66 - 2 - 222 9181
FAX : +66 - 2 - 224 6795

SINGAPORE

WO KEE HONG DISTRIBUTION PTE LTD
130 JOO SENG ROAD
#03-02 OLIVINE BUILDING
SINGAPORE 368357
PHONE : +65 6858 5535 / +65 6381 8621
FAX : +65 6858 6078

NEW ZEALAND

WILDASH AUDIO SYSTEMS NZ
14 MALVERN ROAD MT ALBERT
AUCKLAND NEW ZEALAND
PHONE : +64 - 9 - 8451958
FAX : +64 - 9 - 8463554

TAIWAN

PAI- YUING CO., LTD.
6 TH FL NO, 148 SUNG KIANG ROAD,
TAIPEI, 10429, TAIWAN R.O.C.
PHONE : +886 - 2 - 25221304
FAX : +886 - 2 - 25630415

MALAYSIA

WO KEE HONG ELECTRONICS SDN. BHD.
2ND FLOOR BANGUNAN INFINITE CENTRE
LOT 1, JALAN 13/6, 46200 PETALING JAYA
SELANGOR DARUL EHSAN, MALAYSIA
PHONE : +60 - 3 - 7954 8088
FAX : +60 - 3 - 7954 7088

JAPAN Technical

MARANTZ JAPAN, INC.
35- 1, 7- CHOME, SAGAMIONO
SAGAMIHARA - SHI, KANAGAWA
JAPAN 228-8505
PHONE : +81 42 748 1013
FAX : +81 42 741 9190

日本マランツ株式会社

本社 〒228-8505
神奈川県相模原市相模大野7-35-1

KOREA

MK ENTERPRISES LTD.
ROOM 604/605, ELECTRO-OFFICETEL, 16-58,
3GA, HANGANG-RO, YONGSAN-KU, SEOUL
KOREA
PHONE : +822 - 3232 - 155
FAX : +822 - 3232 - 154

SHOCK, FIRE HAZARD SERVICE TEST :

CAUTION : After servicing this appliance and prior to returning to customer, measure the resistance between either primary AC cord connector pins (with unit NOT connected to AC mains and its Power switch ON), and the face or Front Panel of product and controls and chassis bottom.

Any resistance measurement less than 1 Megohms should cause unit to be repaired or corrected before AC power is applied, and verified before it is return to the user/customer.

Ref. UL Standard No. 1492.

In case of difficulties, do not hesitate to contact the Technical Department at above mentioned address.

1. TECHNICAL SPECIFICATIONS

TUNER SECTION

FM TUNER SECTION

Tuning range	87.5 to 108.0 MHz
Usable sensitivity (3% distortion)	9.5 dB μ
S/N ratio	Mono: 65 dB / Stereo: 60 dB
T.H.D. 1kHz	Mono: 0.5% or less / Stereo: 1.0% or less
Output voltage	800 mV \pm 120 mV

AM TUNER SECTION

Tuning range	531 to 1602 kHz
Usable sensitivity (Loop antenna)	1500 μ V/m / 63.5 dB μ /m
S/N ratio (400Hz/30% Modulation/10mV/m input)	35 dB
T.H.D. (400Hz/30% Modulation/10mV/m input)	1.5% or less
Sensitivity (\pm 9kHz)	20 dB
Output voltage (400Hz 30% Modulation)	240 mV \pm 60 mV

DVD SECTION

AUDIO SECTION

Frequency response	20-20 kHz \pm 1 dB
S/N IEC-A	90 dB
Dynamic range	90 dB
T.H.D.	0.01 %
Channel separation 1kHz	90 dB
Audio output	2.0 V \pm 1 dB
Digital output	0.5 Vp-p \pm 0.05

VIDEO SECTION

Frequency response (100IRE, Multi burst 1MHz Ref. 4.8MHz)	6.0 dB
Video S/N (White100%, LPF:4.2MHz, HPF:100kHz, SC trap:ON)	60 dB
Color S/N (Magenta100%, LPF:500kHz, HPF:100kHz)	56 dB
Video output	1.0 Vp-p \pm 0.8 dB
Video output impedance	75 Ω
Y output level	1.0 Vp-p \pm 0.1
C output level	0.286 Vp-p \pm 0.0286
Y/C output impedance	75 Ω

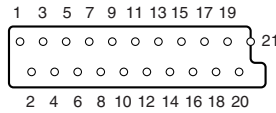
GENERAL

Power supply	AC 230V, 50 Hz
Power Consumption	18 W
Maximum external dimensions (W x H x D)	210 x 71.5 x 320 mm
Weight	2.8 kg

ACCESSORIES

Remote control unit (RC110DV)	1
Batteries (AAA type)	2
FM feeder antenna	1
Antenna plug adapter	1
AM loop antenna	1
Audio cable (Red/White)	1
Video cable (Yellow)	1
Coaxial cable (Black)	1
Remote cable (Orange)	1
Registration card	1
User's guide	1

SCART CONNECTOR



Pin No. TV (OUT)

Pin 1	Audio R out : 2Vrms
Pin 2	Audio R in : 2Vrms
Pin 3	Audio L out : 2Vrms
Pin 4	GND
Pin 5	GND
Pin 6	Audio L in : 2Vrms
Pin 7	Blue out/C in Blue : 0.7Vpp ±0.1V into 75 Ohm *1 C : 300mVpp ±30 into 75 Ohm *2
Pin 8	function switching out <2V : TV >5/<8 : asp.ratio 16 : 9 DVD/AUX >9.5/<12 : asp.ratio 4 : 3 DVD/AUX
Pin 9	GND
Pin 10	not connected
Pin 11	Green out:0.7Vpp ±0.1V into 75 Ohm *1
Pin 12	not connected
Pin 13	GND
Pin 14	GND
Pin 15	Red/C out Red : 0.7Vpp ±0.1V into 75 Ohm *1 C : 300mVpp ±30 into 75 Ohm *2
Pin 16	fast switching out <0.4V into 75 Ohm=CVBS/S-Video 1</<3 into 75 Ohm=RGB
Pin 17	GND
Pin 18	GND
Pin 19	CVBS/Y out : 1Vpp ±0.1V *1
Pin 20	CVBS/Y in : 1Vpp ±0.1V *1
Pin 21	GND

Pin No. AUX (IN)

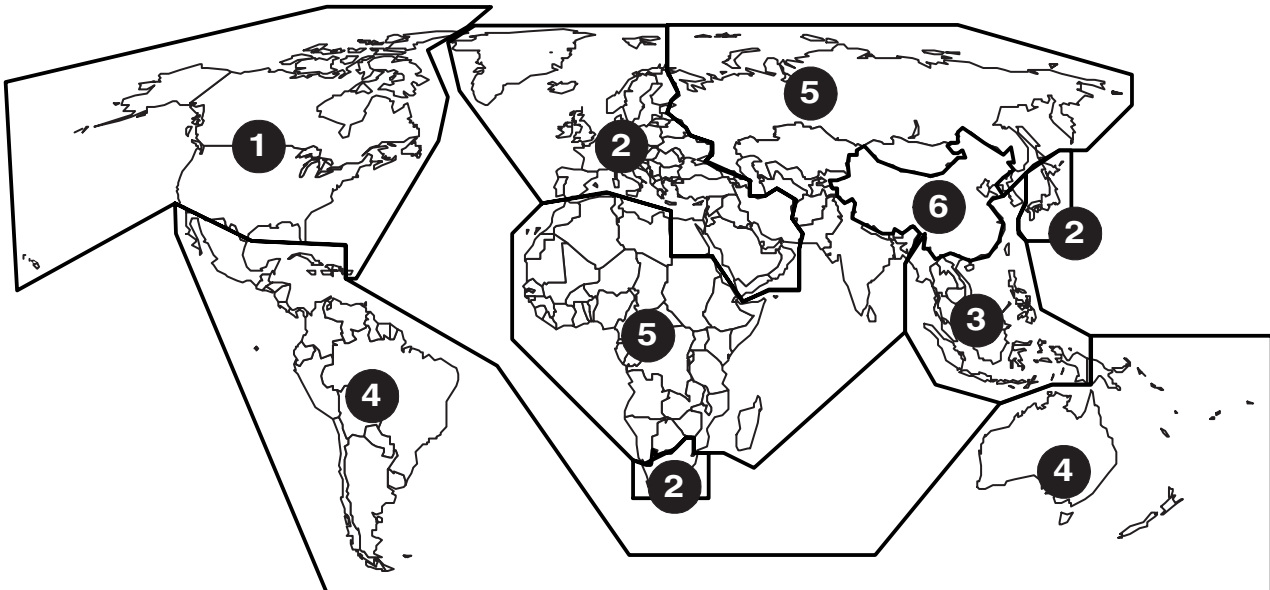
Pin 1	Audio R out : 2Vrms
Pin 2	Audio R in : 2Vrms
Pin 3	Audio L out : 2Vrms
Pin 4	GND
Pin 5	GND
Pin 6	Audio L in : 2Vrms
Pin 7	Blue in/C out Blue : 0.7Vpp ±0.1V into 75 Ohm *1 C : 300mVpp ±30 into 75 Ohm *2
Pin 8	function switching in <2V : DVD >5/<8 : asp.ratio 16 : 9 AUX >9.5/<12 : asp.ratio 4 : 3 AUX
Pin 9	GND
Pin 10	not connected
Pin 11	Green in:0.7Vpp ±0.1V into 75 Ohm
Pin 12	not connected
Pin 13	GND
Pin 14	GND
Pin 15	Red/C in Red : 0.7Vpp ±0.1V into 75 Ohm *1 C : 300mVpp ±30 into 75 Ohm *2
Pin 16	fast switching in <0.4V into 75 Ohm=CVBS/S-Video 1</<3 into 75 Ohm=RGB
Pin 17	GND
Pin 18	GND
Pin 19	CVBS/Y out : 1Vpp ±0.1V *1
Pin 20	CVBS/Y in : 1Vpp ±0.1V *1
Pin 21	GND

*1 : 100% White *2 : Burst Level *3 : color bar(chroma level : 75%)

REGIONAL CODES

Motion picture studios want to control the home release of movies in different countries because theater releases aren't simultaneous (a movie may come out on DVD in the US when it is just hitting screens in Europe). Therefore they have required that the DVD standard include codes which can be used to lock out the playback of certain discs in certain geographical regions. Players sold in each region will have that region's code built into the player. The player will refuse to play these "region coded" discs which are not allowed in the region. However, regional codes are entirely optional. Discs without codes will play on any player in any country. Some studios have already announced that only their new releases will have regional codes. There are six regions:






- | | |
|------------------------------------|------------------------------|
| 1. United States and Canada | 2. Europe and Japan |
| 3. Far East (except Japan & China) | 4. South America and Oceania |
| 5. Africa and the Middle East | 6. China (except Hong Kong) |



Map of DVD Regions

ABOUT DISCS

PLAYABLE DISCS

	DVD
	DVD-R Finalized DVD disc recorded in the DVD video format.
	Video CD (VCD)
	Audio CD (CD-DA)
	CD-R/CD-RW Finalized CD-R and CD-RW discs recorded in the CD-DA format, MP3 format(ISO9006), Video-CD format can be played with the unit. Nevertheless, some discs may not be able to be played depending on condition of the discs.

* Finalize is the process to make a DVD-R or CD-R/CD-RW playable for players (not recorders)

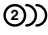

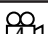
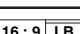

NOT PLAYABLE DISCS

- DVD discs whose region number is not "2" nor "ALL".
- DVD-RW
- DVD-ROM
- DVD-RAM
- DVD-Audio
- DVD+RW
- CD-ROM
- CDV
- CD-G
- CVD
- Super Audio CD
- CD Photo, etc.

ABOUT DVD DISCS

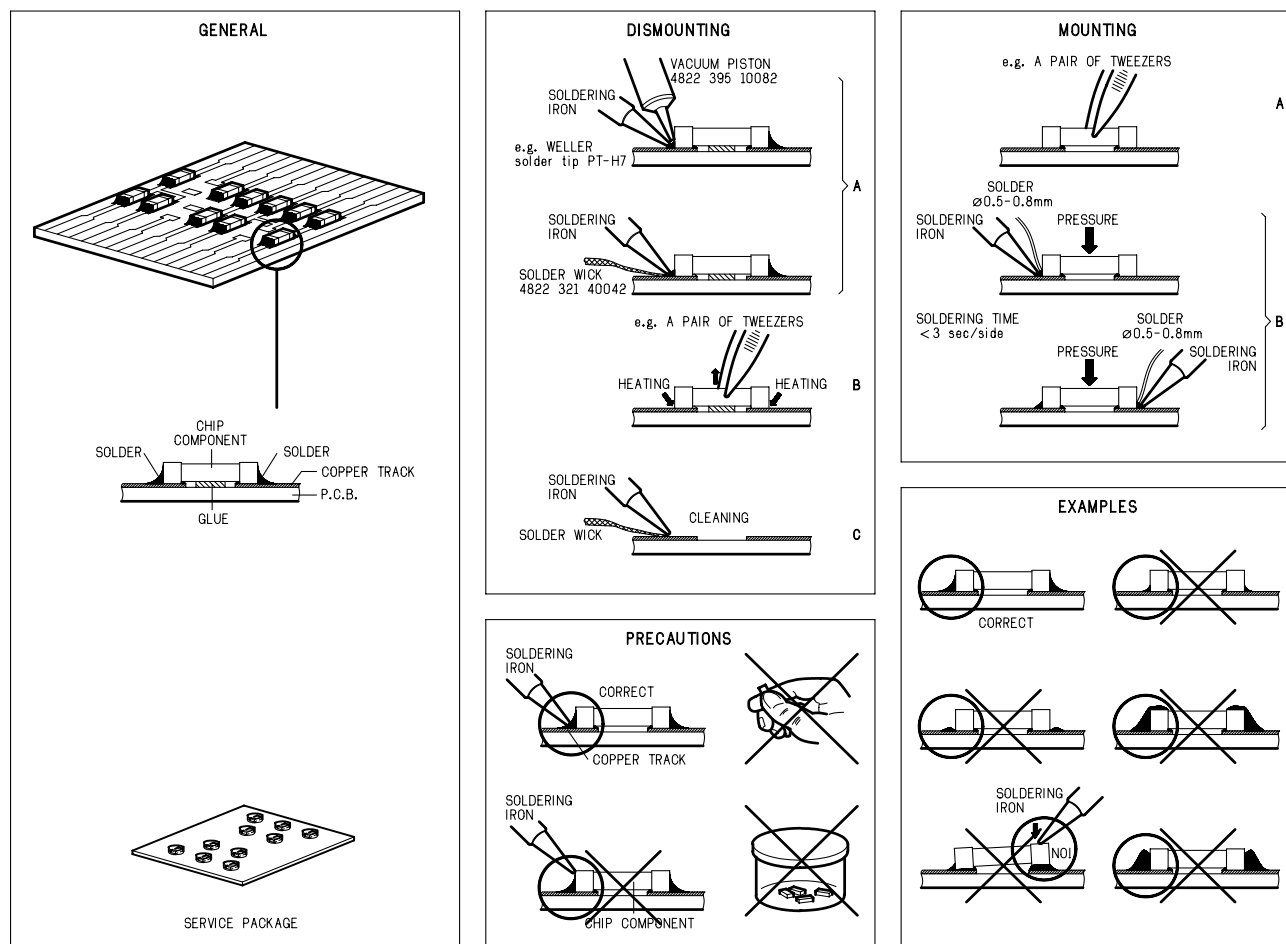
Marks on packages

The marks listed below indicate contents in a disc.

	Indicates the number of recorded audio tracks.
	Indicates the number of recorded subtitle languages.
	Indicates the number of recorded angles.
	Indicates the selectable aspect ratios.
	Indicates the region number of the disc.

2. SERVICE INFORMATION AND PROCEDURE

SERVICE HINTS



SERVICE TOOLS

Disc for firmware update

Audio signals disc

Disc without errors (SBC444)+

Disc with DO errors, black spots and fingerprints (SBC444A)

Disc (65 min 1kHz) without no pause

Max. diameter disc (58.0 mm)

Torx screwdrivers

Set (straight)

Set (square)

13th order filter

DVD test disc (PAL)

DVD test disc (NTSC) ALMEDIO

*DV110xxxx

4822 397 30184

4822 397 30245

4822 397 30155

4822 397 60141

4822 395 50145

4822 395 50132

4822 395 30204

4822 397 10131

TDV-540

WARNINGS AND LASER SAFETY INSTRUCTIONS

(GB) WARNING

All ICs and many other semi-conductors are susceptible to electrostatic discharges (ESD). Careless handling during repair can reduce life drastically.

When repairing, make sure that you are connected with the same potential as the mass of the set via a wrist wrap with resistance.

Keep components and tools also at this potential.



(NL) WAARSCHUWING

Alle IC's en vele andere halfgeleiders zijn gevoelig voor elektrostatische ontladingen (ESD).

Onzorgvuldig behandelen tijdens reparatie kan de levensduur drastisch doen verminderen.

Zorg ervoor dat u tijdens reparatie via een polsband met weerstand verbonden bent met hetzelfde potentiaal als de massa van het apparaat.

Houd componenten en hulpmiddelen ook op hetzelfde potentiaal.

(F) ATTENTION

Tous les IC et beaucoup d'autres semi-conducteurs sont sensibles aux décharges statiques (ESD).

Leur longévité pourrait être considérablement écourtée par le fait qu'aucune précaution n'est prise à leur manipulation.

Lors de réparations, s'assurer de bien être relié au même potentiel que la masse de l'appareil et enfiler le braceleterti d'une résistance de sécurité.

Veiller à ce que les composants ainsi que les outils que l'on utilise soient également à ce potentiel.

(D) WARNUNG

Alle IC und viele andere Halbleiter sind empfindlich gegen elektrostatische Entladungen (ESD).

Unvorsichtige Behandlung bei der Reparatur kann die Lebensdauer drastisch vermindern. Sorgen sie dafür, das Sie im Reparaturfall über ein Pulsarmband mit Widerstand mit dem Massepotential des Gerätes verbunden sind.

Halten Sie Bauteile und Hilfsmittel ebenfalls auf diesem Potential.

(I) AVVERTIMENTO

Tutti IC e parecchi semi-conduttori sono sensibili alle scariche statiche (ESD).

La loro longevita potrebbe essere fortemente ridatta in caso di non osservazione della piu grande cauzione alla loro manipolazione.

Durante le riparazioni occorre quindi essere collegato allo stesso potenziale che quello della massa dell'apparecchio tramite un braccialeto a resistenza.

Assicurarsi che i componenti e anche gli utensili con quali si lavora siano anche a questo potenziale.

(GB)

Safety regulations require that the set be restored to its original condition and that parts which are identical with those specified be used.

(NL)

Veiligheidsbepalingen vereisen, dat het apparaat in zijn oorspronkelijke toestand wordt terug gebracht en dat onderdelen, identiek aan de gespecificeerde worden toegepast.

(D)

Bei jeder Reparatur sind die geltenden Sicherheitsvorschriften zu beachten. Der Originalzustand des Gerats darf nicht verändert werden. Für Reparaturen sind Original-Ersatzteile zu verwenden.

(I)

Le norme di sicurezza esigono che l'apparecchio venga rimesso nelle condizioni originali e che siano utilizzati pezzi di ricambio idetici a quelli specificati.

(F)

Les normes de sécurité exigent que l'appareil soit remis à l'état d'origine et que soient utilisées les pièces de rechange identiques à celles spécifiées.



SHOCK, FIRE HAZARD SERVICE TEST:

CAUTION: After servicing this appliance and prior to returning to customer, measure the resistance between either primary AC cord connector pins (with unit NOT connected to AC mains and its Power switch ON), and the face or Front Panel of product and controls and chassis bottom,

Any resistance measurement less than 1 Megohms should cause unit to be repaired or corrected before AC power is applied, and verified before return to user/customer.

Ref.UL Standard NO.1492.

NOTE ON SAFETY:

Symbol  : Fire or electrical shock hazard. Only original parts should be used to replace any part with symbol  Any other component substitution (other than original type), may increase risk of fire or electrical shock hazard.

"Pour votre sécurité, ces documents doivent être utilisés par des spécialistes agréés, seuls habilités à réparer votre appareil en panne."

LASER SAFETY

This unit employs a laser. Only a qualified service person should remove the cover or attempt to service this device, due to possible eye injury.

LASER DEVICE UNIT

Type: SemiconductorlaserGaAlAs
Wave length: 650 nm (DVD)
780 nm (VCD/CD)
Output Power: 7 mW (DVD)
10 mW (VCD/CD)
Beam divergence: 60 degree



USE OF CONTROLS OR ADJUSTMENTS OR PERFORMANCE OF PROCEDURE OTHER THAN THOSE SPECIFIED HEREIN MAY RESULT IN HAZARDOUS RADIATION EXPOSURE.

AVOID DIRECT EXPOSURE TO BEAM

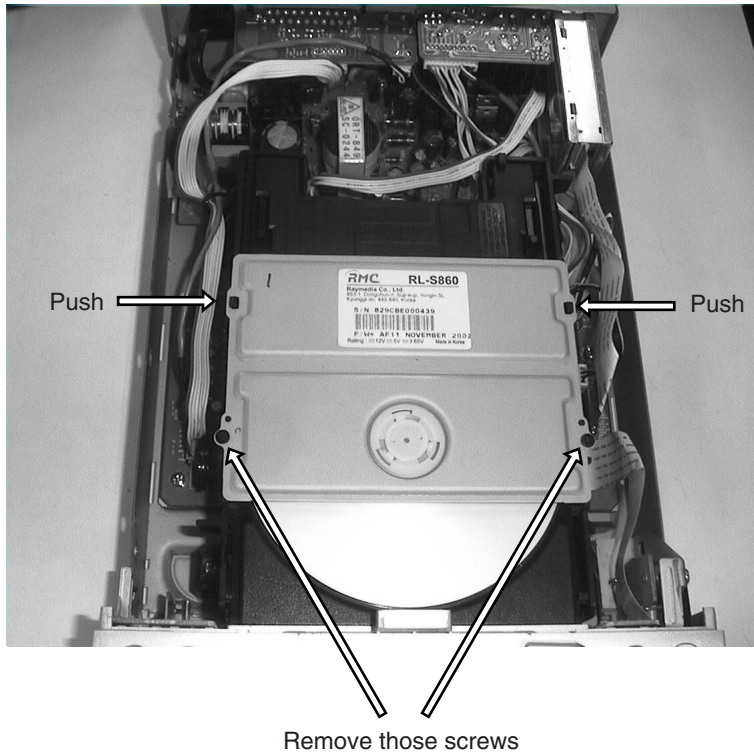
WARNING

The use of optical instruments with this product will increase eye hazard.
Repair handling should take place as much as possible with a disc loaded inside the player

WARNING LOCATION: INSIDE ON LASER COVERSIELD

CAUTION VISIBLE AND INVISIBLE LASER RADIATION WHEN OPEN AVOID EXPOSURE TO BEAM
ADVARSEL SYNLIG OG USYNLIG LASERSTRÅLING VED ÅBNING UNDGÅ UDSÆTTELSE FOR STRÅLING
ADVARSEL SYNLIG OG USYNLIG LASERSTRÅLING NÅR DEKSEL ÅPNES UNNGÅ EKSPONERING FOR STRÅLEN
VARNING SYNLIG OCH OSYNLIG LASERSTRÅLNING NÅR DENNA DEL ÄR ÖPPNAD BETRAKTA EJ STRÅLEN
VARO! AVATT AESSA OLET ALTTIINA NÄKYVÄLLE JA NÄKYMÄTT ÖMÄLLE LASER SÄTEILYLLE. ÄLÄ KATSO SÄTEESEEN
VORSICHT SICHTBARE UND UNSICHTBARE LASERSTRAHLUNG WENN ABDECKUNG GEÖFFNET NICHT DEM STRAHL AUSSETZEN
DANGER VISIBLE AND INVISIBLE LASER RADIATION WHEN OPEN AVOID DIRECT EXPOSURE TO BEAM
ATTENTION RAYONNEMENT LASER VISIBLE ET INVISIBLE EN CAS D'OUVERTURE EXPOSITION DANGEREUSE AU FAISCEAU

EMERGENCY DISC EJECT



1. Remove the top cover of the player.
2. Remove two screws shown in the picture above.
3. Remove the top cover of the drive unit with pressing the latches.
4. Now you can remove the disc.

RESETTING THE UNIT

Reset all the settings EXCEPT the parental lock password

1. Pull out the Mains(AC) plug from wall outlet.
2. Keep pressing the **STAND BY** button on the front panel.
3. Insert the Mains(AC) plug to wall outlet.
4. All the settings except the parental lock password are reset.

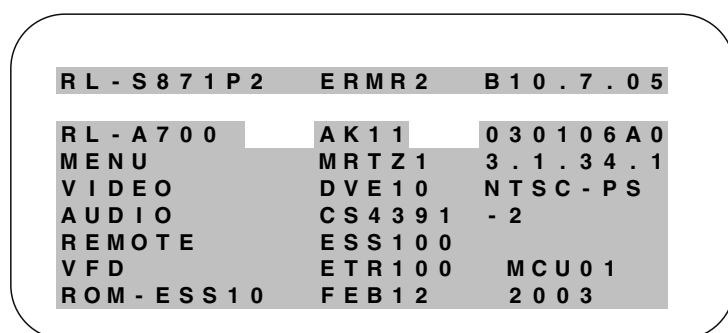
Reset all the settings INCLUDING the parental lock password

1. Press the **OPEN/CLOSE** button to open the tray.
2. Press the **SETUP** button on the remote controller.
3. Input the code **"8800"** with the numeric buttons on the remote controller.
4. Press the **SETUP** button on the remote controller again.
5. Press the **S.TITLE** button on the remote controller.
6. All the settings including the parental lock password are reset.

FIRMWARE VERSION CHECK

Firmware version check for the main drive unit

1. First, connect a TV monitor to the player.
2. Press the **OPEN/CLOSE** button to open the tray.
3. Press the **SETUP** button on the remote controller.
4. Input the code "8800" with the numeric buttons on the remote controller.
5. Press the **SETUP** button on the remote controller again.
6. Press the **▶▶ (NEXT)** button on the remote controller.
7. The following information is displayed on the TV screen. The firmware version is shown at the top right corner.
(Ex.: B10.7.05)



Firmware version check for the front micro-computer

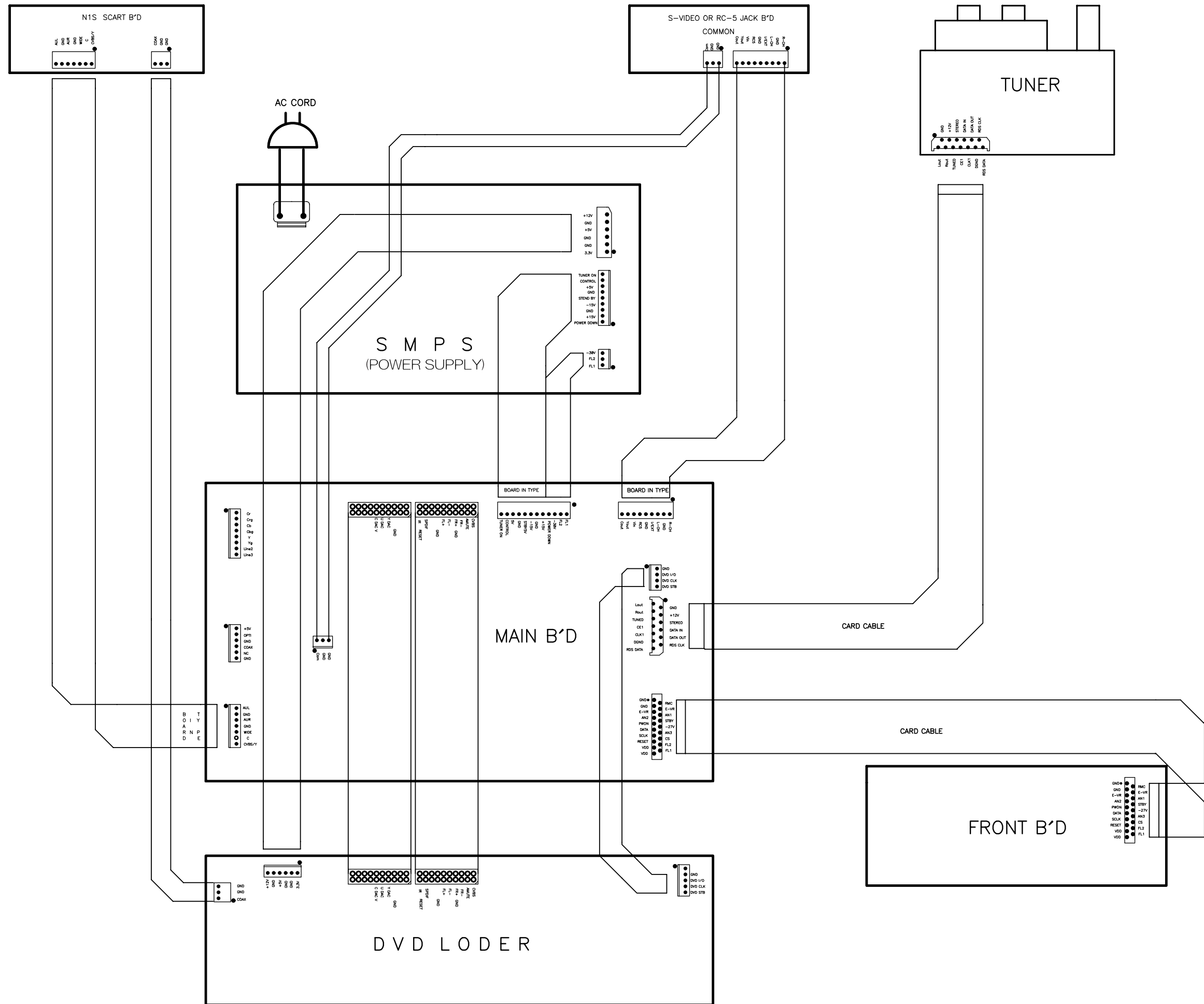
1. Pull out the Mains(AC) plug from wall outlet.
2. Keep pressing the **STOP** button on the front panel.
3. Insert the Mains(AC) plug to wall outlet.
4. The firmware version is displayed on the front FLD.
(Ex.: Ver2-23)
5. Turn the MULTI JOG dial one step to either side. All the FLD segments light up then light off one by one.

FIRMWARE UPDATE

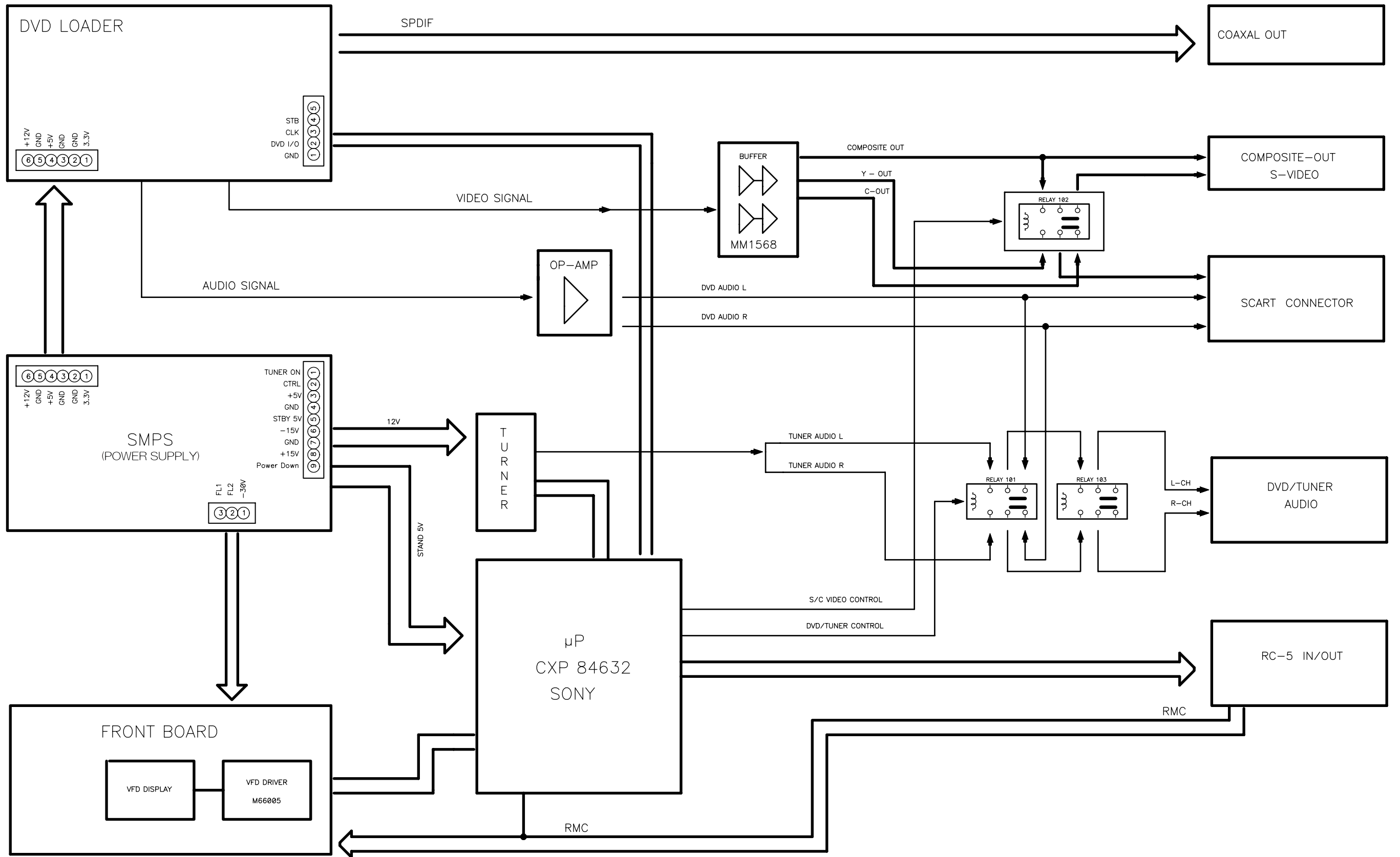
1. First, connect a TV monitor to the player.
2. Press the **STANDBY** button to turn on the unit.
3. Press the **OPEN/CLOSE** button to open the tray. Insert the update CD-ROM(Part No.: *DV110xxxx).
4. Press the **PLAY** button.
5. Firmware update will be done automatically. When updating is finished, "VERIFY DONE xxxxxx" is displayed on the TV screen. Then the disc tray opens automatically.
6. Remove the CD-ROM from the disc tray.
7. Press the **STANDBY** button to turn off the unit.
8. Press the **STANDBY** button again to turn on the unit.
9. The firmware update procedure has been completed.

Note: To check the firmware version number, follow the procedure "Firmware version check for the main drive unit" above.

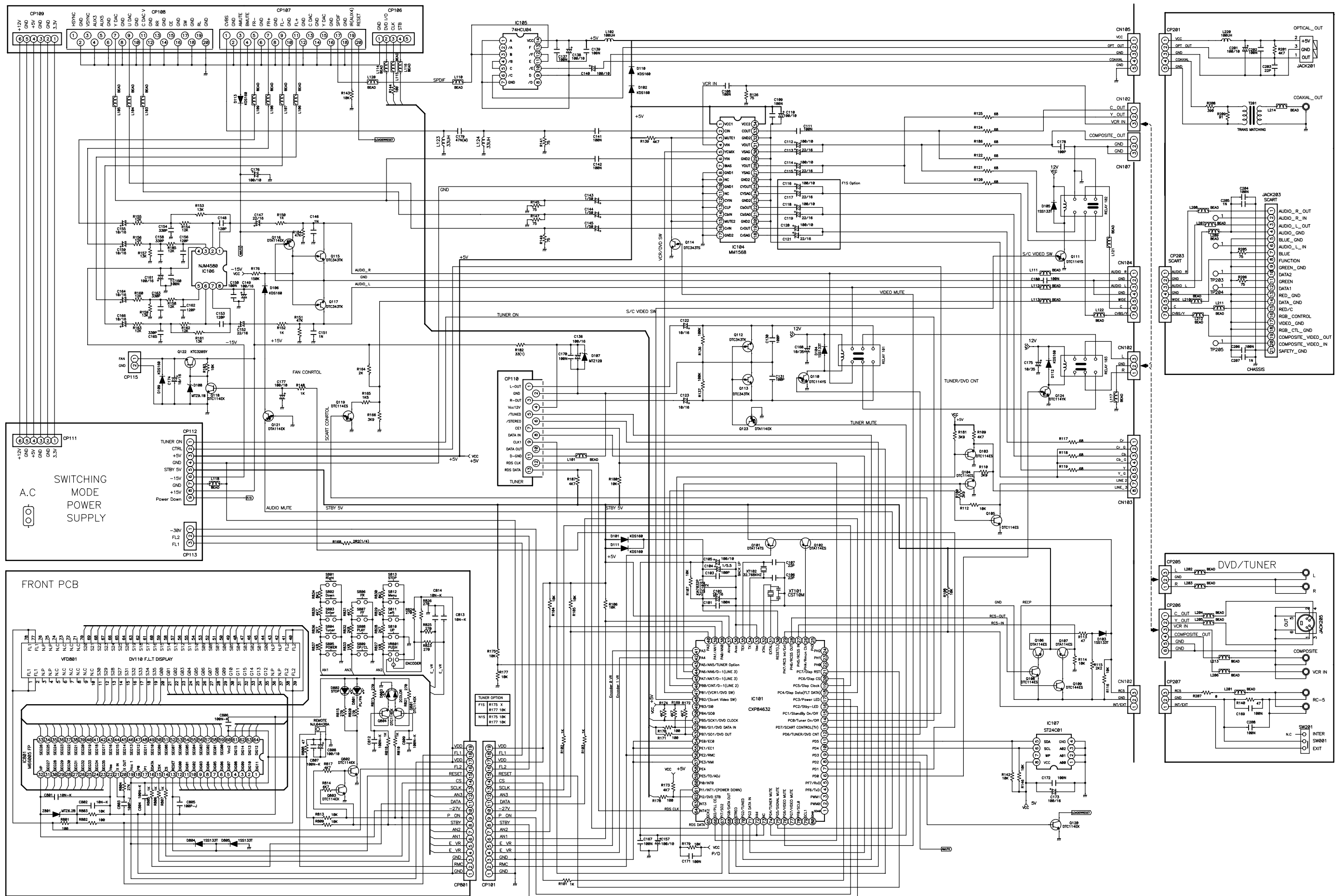
3. WIRING DIAGRAM



4. BLOCK DIAGRAM

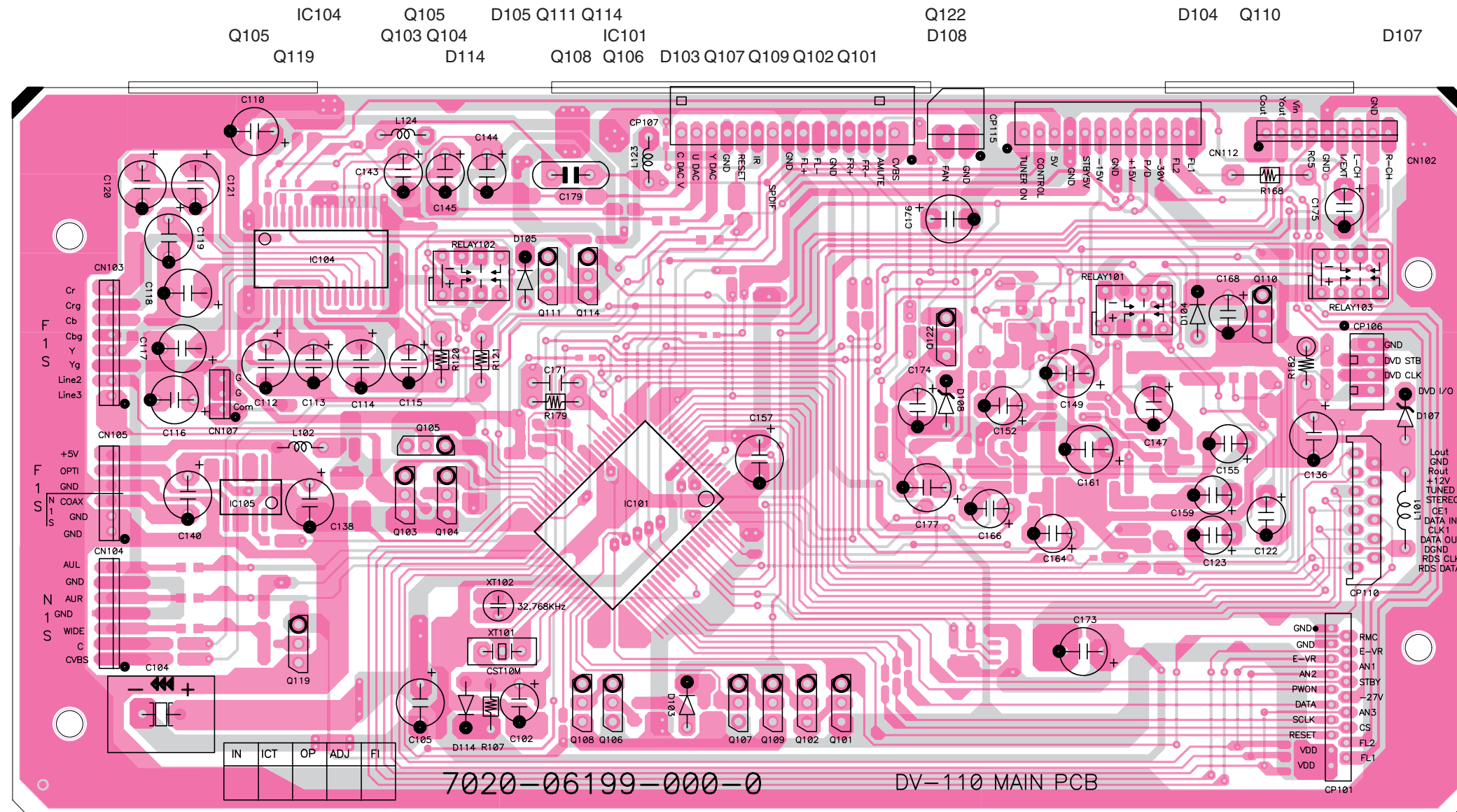


5. SCHEMATIC DIAGRAM

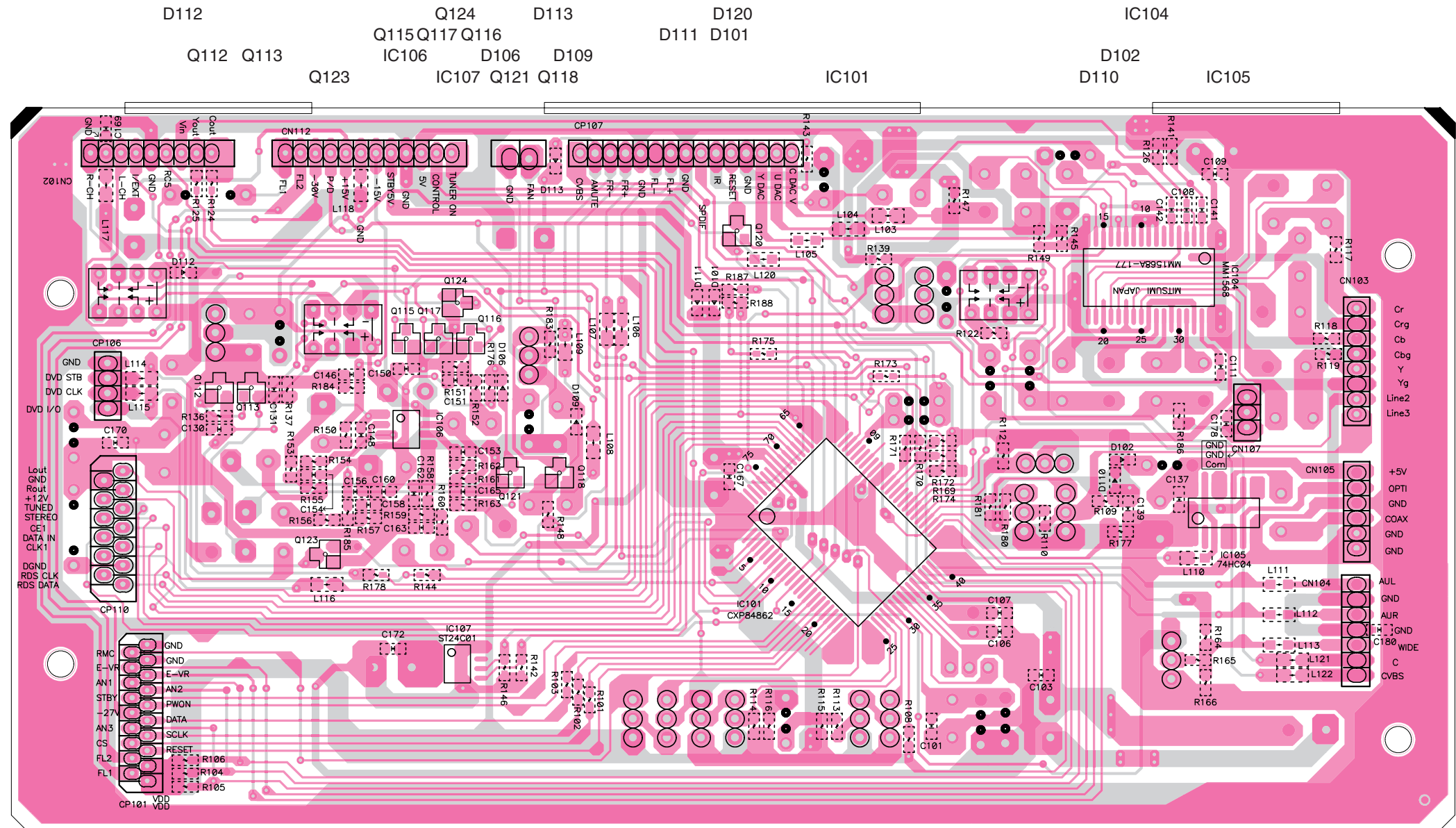


6. PARTS LOCATION

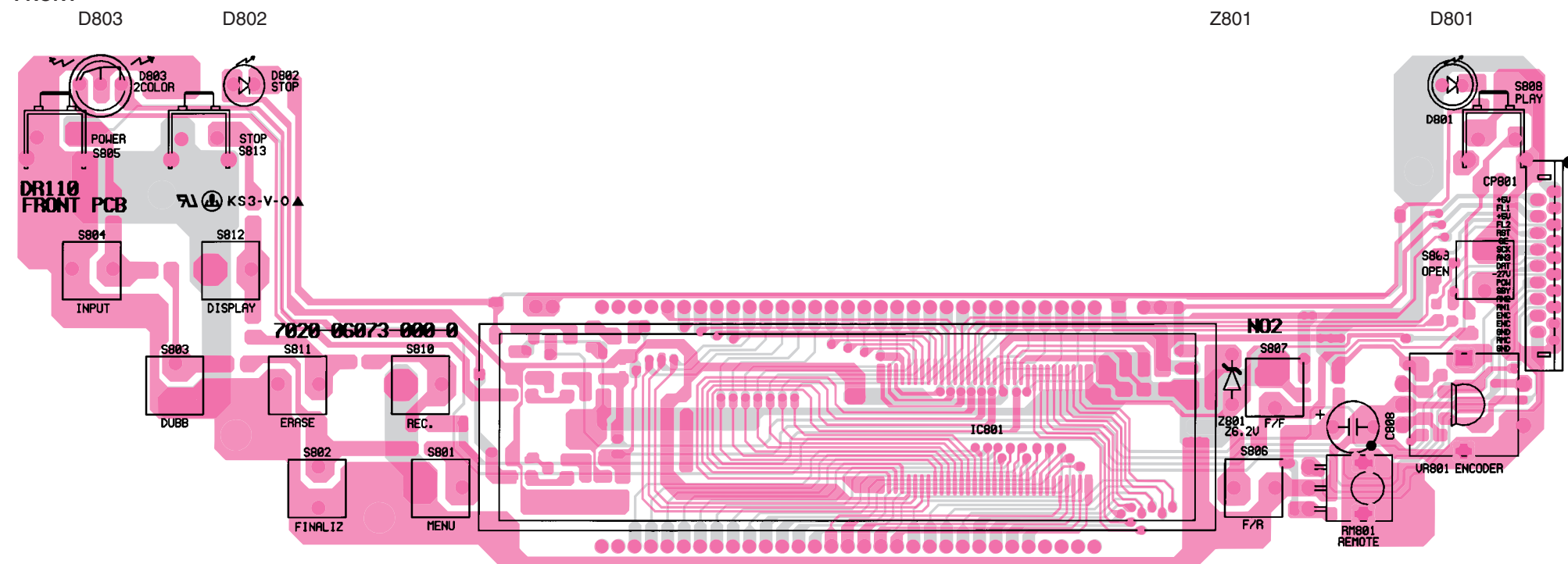
MAIN



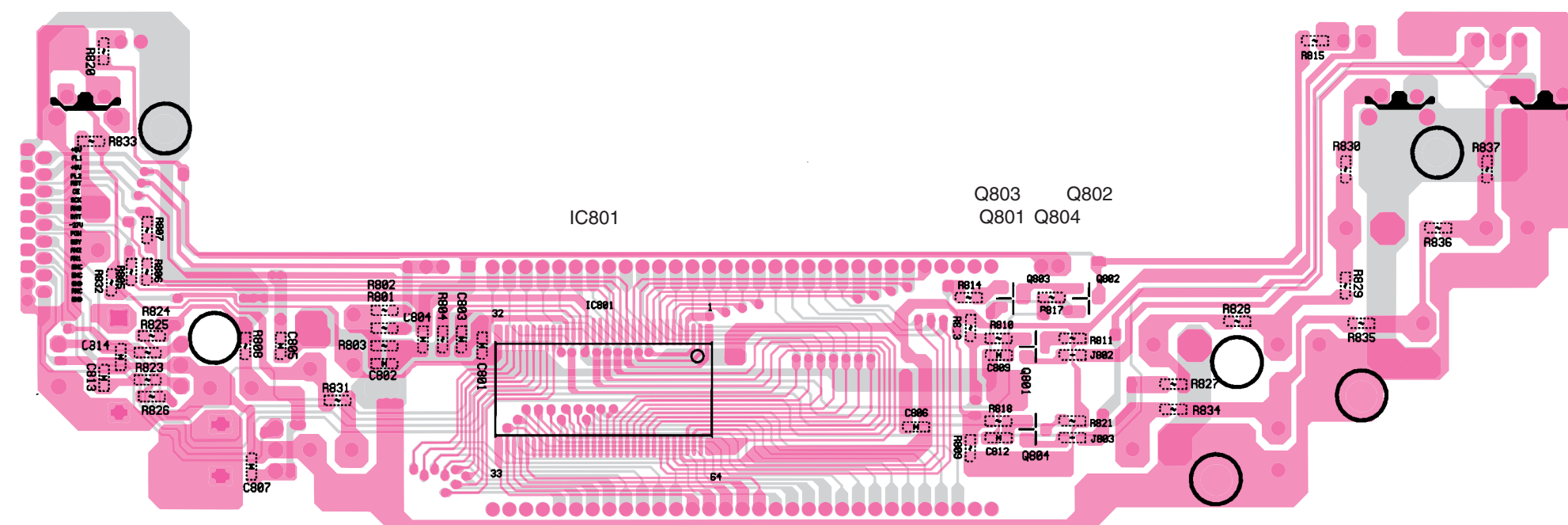
MAIN



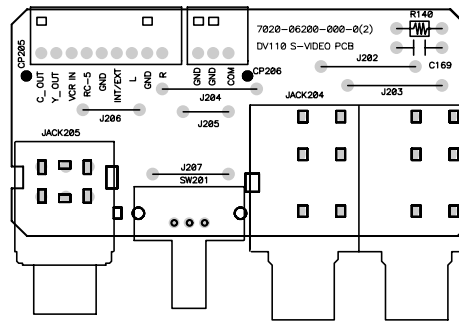
FRONT



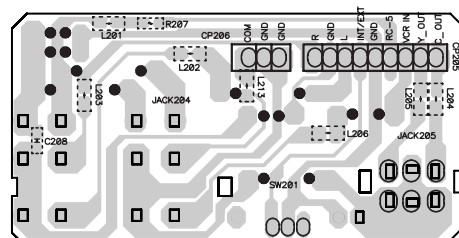
FRONT



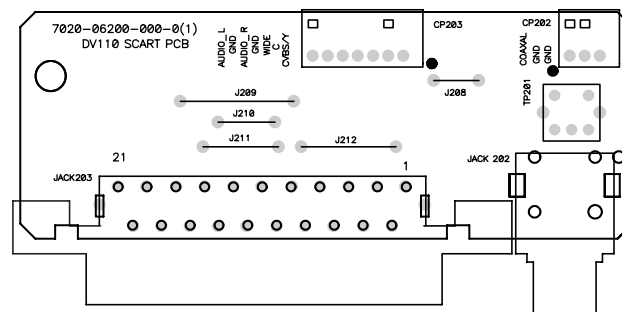
S-VIDEO



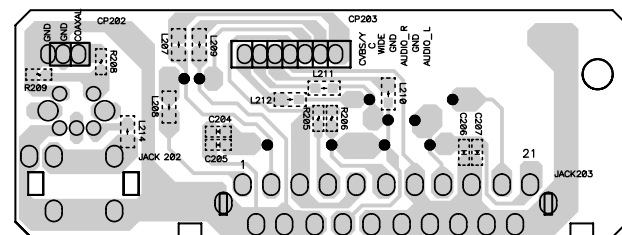
S-VIDEO



SCART



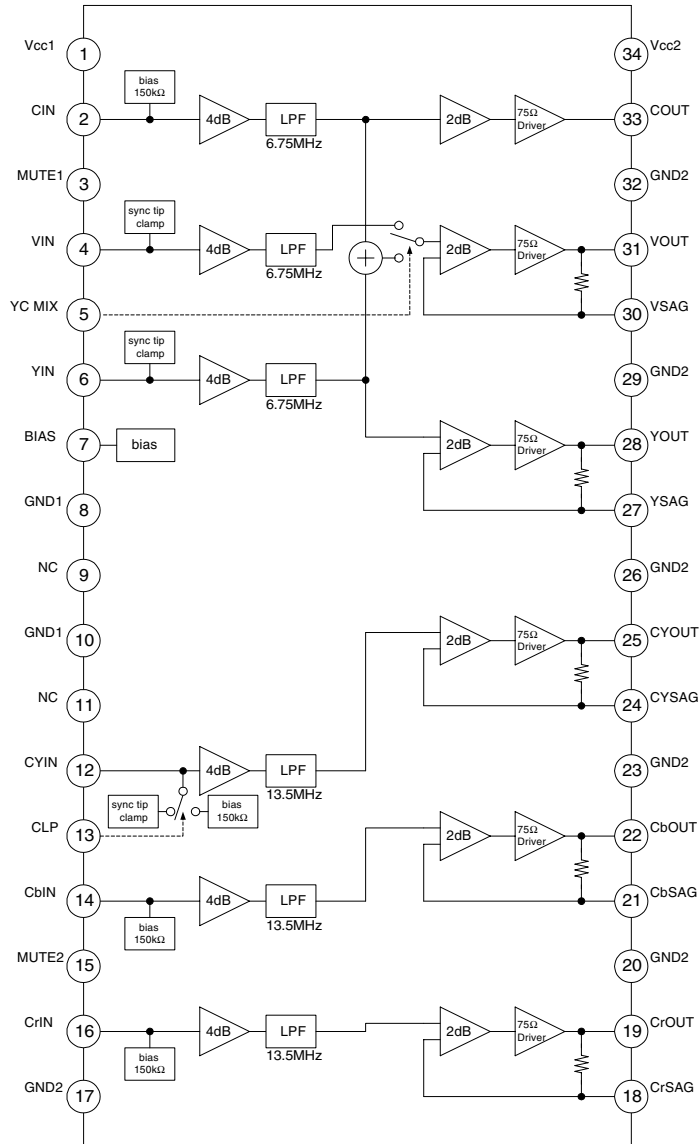
SCART



7. IC DATA

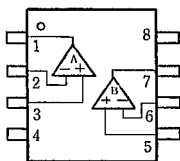
IC104:MM1568

Block Diagram

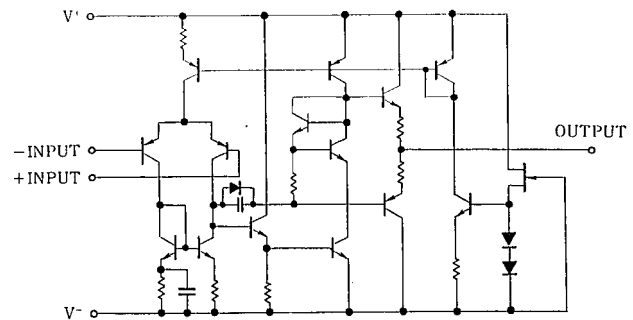


IC106:NJM4580M

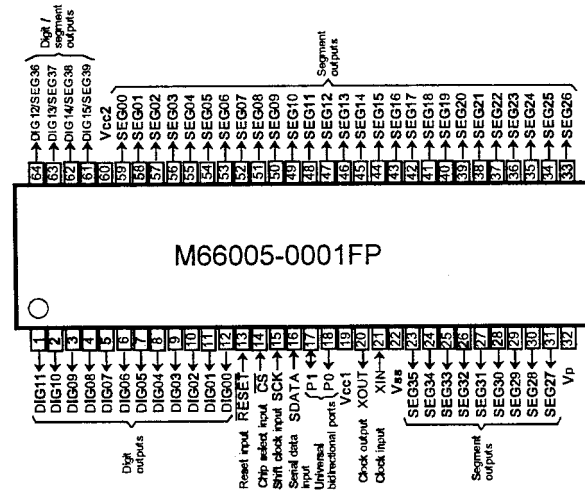
Pin Assignment



Equivalent Circuit



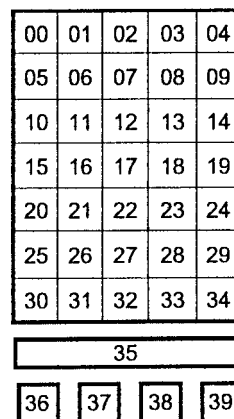
IC801:M66005FP
Pin Assignment



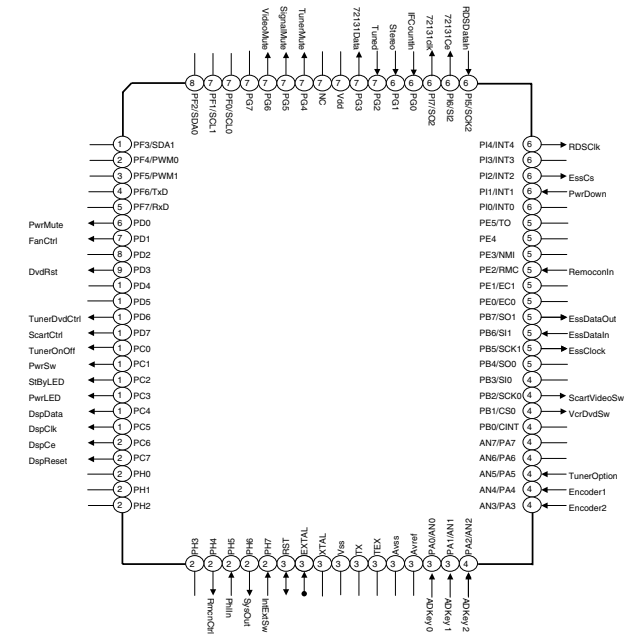
Pin Function

Symbol	Pin name	Comment
RESET	Reset input	When "L", M66005 is initialized.
CS	Chip select input	When "L", communication with the MCU is possible. When "H", any instruction from the MCU is neglected.
SCK	Shift clock input	Serial input data is taken and shifted by the positive edge of SCK.
SDATA	Serial data input	
XIN, XOUT	Clock input Clock output	When use as a CR oscillator, connect external resistor and capacitor. When use an external clock, input external clock to XIN, and XOUT must be opened.
DIG00~DIG15	Digit output	Connect to digit (grid) pins of VFD.
SEG00~SEG39	Segment output	Connect to segment (anode) pins of VFD. Pins from SEG00 to SEG39 correspond to segment pins of VFD as shown in the table below. SEG36~SEG39 pins are common to DIG12~DIG15 pins. So, when use SEG36~SEG39, the number of digit to be used is decreased.
P1, P0	Universal port P1 : bidirectional P0 : output	Generally, use this port as the static output port. This port also operates as the timing IN/OUT port to control another M66005.
Vcc1		Positive power supply for internal logic.
Vcc2		Positive power supply for DIG and SEG outputs.
Vss		GND (0V)
Vp		Negative power supply to pull down.

VFD Grid



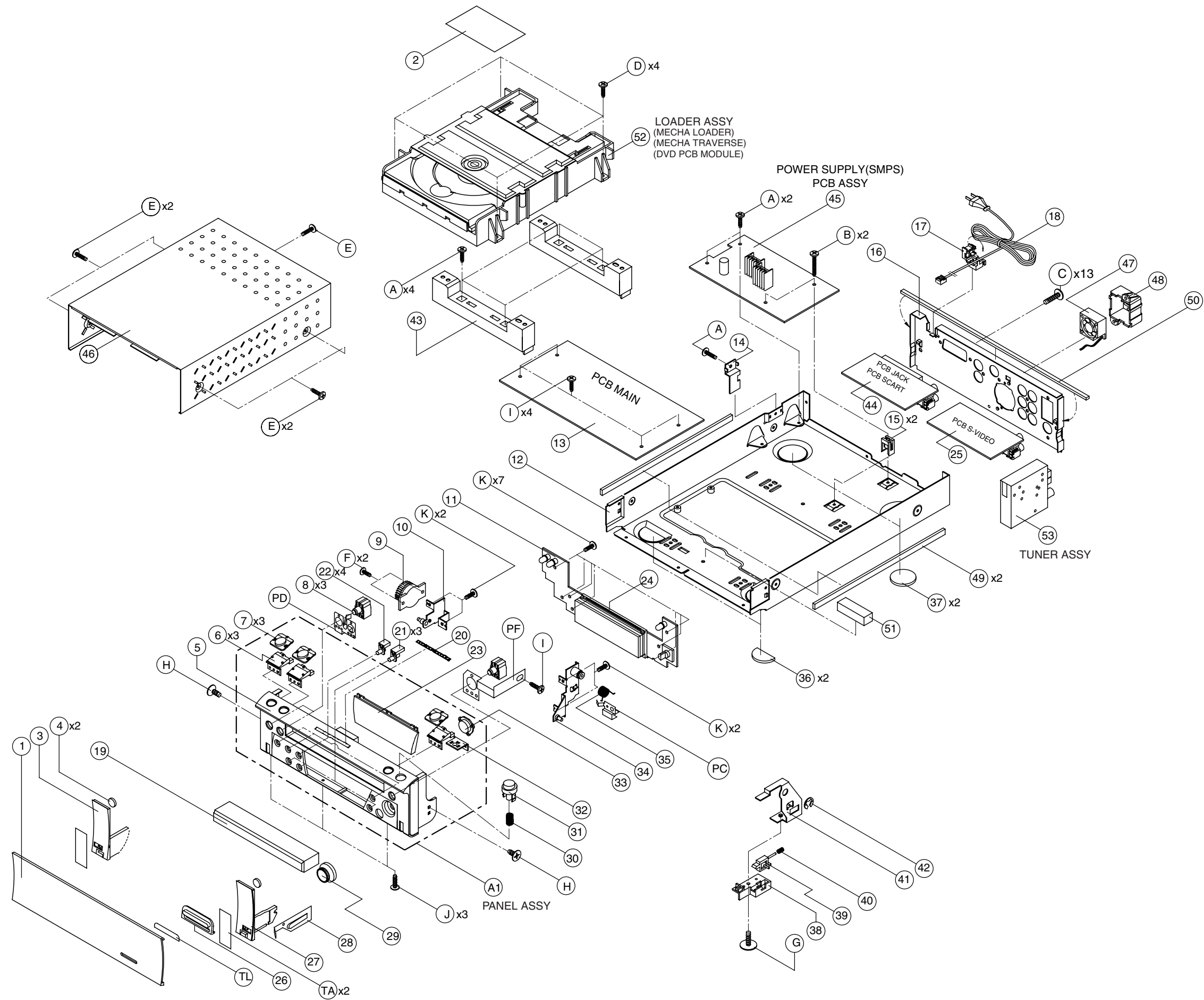
IC101:CXP84632
Pin Assignment



Pin Function

Pin No	Pin Name	Act	I/O	Description
1-5	-	-	-	Unused Pin
6	PwrMute	H/L	O	Analog Output Relay On/Off Control
7	FanCtrl	H/L	O	Fan On/Off Control
8	-	-	-	Unused Pin
9	DvdRst	H/L	O	Loader Micom Reset
10-11	-	-	-	Unused Pin
12	TunerDvdCtrl	H/L	O	Analog Output Selection(Dvd/Tuner)
13	ScartCtrl	H/L	O	Wide Port of Scart Jack Control
14	TunerOnOff	H/L	O	Loader Power On/Off Control
15	PwrSw	H/L	O	Main Power On/Off Control
16	StByLED	H/L	O	Button LED Control
17	PwrLED	H/L	O	Button LED Control
18	DspData	H/L	O	Communication Data to FL Driver IC
19	DspClk	H/L	O	Communication Clock to FL Driver IC
20	DspCe	H/L	O	Communication Chip Enable to FL Driver IC
21	DspReset	H/L	O	FI Driver IC Reset
22-25	-	-	-	Unused Pin
26	RmcnCtrl	H/L	O	Remocon Pulse Bypass Control
27	PhIn	H/L	I	RC-5/6 Read-In port
28	SysOut	H/L	O	RC-5/6 Send-Out Port
29	IntExtSw	H/L	I	Internal/External Mode Selection Check
30	RST	H/L	I	Micom Reset
31	EXTAL	H/L	I	EXTAL(10MHz)
32	XTAL	H/L	O	XTAL(10MHz)
33	Vss	L	I	GND
34	TX	H/L	O	TX(32KHz)
35	TEX	H/L	I	TEX(32KHz)
36	Avss	L	I	Analog GND
37	Avref	H	I	Analog Reference Voltage(+5V)
38	ADKey0	A	I	Analog Key Input0
39	ADKey1	A	I	Analog Key Input1
40	ADKey2	A	I	Analog Key Input2
41	Encoder2	H/L	I	Encoder Pulse In 2
42	Encoder1	H/L	I	Encoder Pulse In1
43	TunerOption	A	I	Tuner Option Selection Voltage
44-46	-	-	-	Unused Pin
47	VcrDvdSw	H/L	O	YCMix Selection to Video IC(MM1568)
48	ScartVideoSw	H/L	O	S-video/Composite Selection
49-50	-	-	-	Unused Pin
51	EssClock	H/L	O	Communication clock to Loader Micom
52	EssDataIn	H/L	I	Communication Data In from Loader Micom
53	EssDataOut	H/L	O	Communication Data Out to Loader Micom
54-55	-	-	-	Unused Pin
56	RemoconIn	H/L	I	Remocon Pulse In
57-60	-	-	-	Unused Pin
61	PwrDown	H/L	I	Power Down Status Check
62	EssCs	H/L	I	Communication Check From Loader Micom
63	-	-	-	Unused Pin
64	RDSClk	H/L	O	RDS Clock to Tuner Pack
65	RDSDataIn	H/L	I	RDS Data In from Tuner Pack
66	72131Ce	H/L	O	Communication Chip Enable to Tuner Pack
67	72131clk	H/L	O	Communication clock to Tuner Pack
68	IFCountIn	H/L	I	IF Count Pulse from Tuner Pack
69	Stereo	H/L	I	Stereo Port from TunerPack
70	Tuned	H/L	I	Tuned Port from TunerPack
71	72131Data	H/L	O	Communication Data to TunerPack
72	Vdd	H	I	VDD
73	NC	H	I	VDD
74	TunerMute	H/L	O	Tuner Mute Control
75	Signal Mute	H/L	O	Loader Analog Signal Mute Control
76	Video Mute	H/L	O	Video Mute Control
77-80	-	-	-	Unused Pin

8. EXPLODED VIEW AND PARTS LIST



POS. NO	VERS. COLOR	PART NO. (FOR EUR)	PART NO. (MJI)	DESCRIPTION		
CP107		nsp	nsp	CN.WAFER 2.0MM	53015-1510 15P ANGLE	L101530151510
CP110		nsp	nsp	CN.FPC 1.25MM	8370-131 13P ST	L131837001300
CP115		nsp	nsp	CN.WAFER 2.5MM	5268-02A 2P ANGLE	L102526800200
D101		nsp	*HD201560R	D,SWITCHING CHIP	KDS160(μF) /USC	K005016000010
D103		nsp	*HD201720R	D,SWITCHING	1N4148-52RE 75V 150MA DO-34	K000414803520
D104		nsp	*HD201720R	D,SWITCHING	1N4148-52RE 75V 150MA DO-34	K000414803520
D105		nsp	*HD201720R	D,SWITCHING	1N4148-52RE 75V 150MA DO-34	K000414803520
D106		nsp	*HD201560R	D,SWITCHING CHIP	KDS160(μF) /USC	K005016000010
D107		*HD302160R	*HD302160R	D,ZENER	MTZJ12B-0.5W/5MA-52MM	K06012R044520
D108		*HD301970R	*HD301970R	D,ZENER	MTZJ9.1B-0.5W/5MA-52MM	K06009R144520
D109		nsp	*HD201560R	D,SWITCHING CHIP	KDS160(μF) /USC	K005016000010
D112		nsp	*HD201560R	D,SWITCHING CHIP	KDS160(μF) /USC	K005016000010
D112		nsp	*HD201720R	D,SWITCHING	1N4148-52RE 75V 150MA DO-34	K000414803520
D113		nsp	*HD201560R	D,SWITCHING CHIP	KDS160(μF) /USC	K005016000010
IC101		*HU100650R	*HU100650R	IC,CPU MICRO PROCESS	CXP84632-315Q QFP80 DWP-372	J020846323150
IC104		*HC108290R	*HC108290R	IC,LINEAR-DRIVER	MM1568AJBE/DRIVER SSOP34	J127156800010
IC106		*HC400050R	*HC400050R	IC,LINEAR OP	NJM4580M-SOP8P	J121458000040
L101		*FC900310R	*FC900310R	BEAD,COIL	PI3.5*5MM 52RE	7610000020520
L103						
∫		*FC900290R	*FC900290R	BEAD,COIL CHIP	HB-IT2012-121JT 2012REEL	7611010000020
L122						
L123		nsp	nsp	COIL,FILTER-INDUCTOR	33UH-Q40/14M-R4.7-52RE	D330330700520
L124		nsp	nsp	COIL,FILTER-INDUCTOR	33UH-Q40/14M-R4.7-52RE	D330330700520
Q101		*BA001340R	*BA001340R	SEMI,BRT/PNP RA	DTA114TS,0.3W/TO92M-REEL	J6000114T0010
Q102		BA10007210	BA10007210	SEMI,BRT/PNP RA	DTA114ES,0.3W/TO92M-REEL	J6000114E0010
Q106		BA10007210	BA10007210	SEMI,BRT/PNP RA	DTA114ES,0.3W/TO92M-REEL	J6000114E0010
Q107		BA10007210	BA10007210	SEMI,BRT/PNP RA	DTA114ES,0.3W/TO92M-REEL	J6000114E0010
Q108		*BA001350R	*BA001350R	SEMI,BRT/NPN RC	DTC114ES,0.3W/TO92M-REEL	J6020114E0010
Q109		*BA001390R	*BA001390R	SEMI,BRT/NPN RC	DTC114ES,0.3W/TO92M-REEL	J6020144E0010
Q110		*BA001360R	*BA001360R	SEMI,BRT/NPN RC	DTC114YS,0.3W/TO92M-REEL	J6020114Y0050
Q111		*BA001360R	*BA001360R	SEMI,BRT/NPN RC	DTC114YS,0.3W/TO92M-REEL	J6020114Y0050
Q112		*BA001470R	*BA001470R	TRS.CHIP/NPN 2SC	DTC343TK(H03) 0.2W/SMT-REEL	J5220343T0210
Q113		*BA001470R	*BA001470R	TRS.CHIP/NPN 2SC	DTC343TK(H03) 0.2W/SMT-REEL	J5220343T0210
Q114		*BA001480R	*BA001480R	SEMI,BRT/NPN RC	DTC343TS,0.3W/TO92M-REEL	J6020343T0010
Q115		*BA001470R	*BA001470R	TRS.CHIP/NPN 2SC	DTC343TK(H03) 0.2W/SMT-REEL	J5220343T0210
Q116		BA10023210	BA10023210	TRS.CHIP/PNP 2SA	DTA114EK(14) 0.2W/SMT-REEL	J5200114E0210
Q117		*BA001470R	*BA001470R	TRS.CHIP/NPN 2SC	DTC343TK(H03) 0.2W/SMT-REEL	J5220343T0210
Q118		BA20005210	BA20005210	TRS.CHIP/NPN 2SC	DTC114EK(24),0.2W/SMT-REEL	J5220114E0210
Q119		*BA001350R	*BA001350R	SEMI,BRT/NPN RC	DTC114ES,0.3W/TO92M-REEL	J6020114E0010
Q120		BA20005210	BA20005210	TRS.CHIP/NPN 2SC	DTC114EK(24),0.2W/SMT-REEL	J5220114E0210
Q121		BA10023210	BA10023210	TRS.CHIP/PNP 2SA	DTA114EK(14) 0.2W/SMT-REEL	J5200114E0210
Q122		*BA001260R	*BA001260R	SEMI,TR/GE NPN 2SC	KTC3205Y,1W/TO92L-REEL	J5023205Y0020
Q123		BA10023210	BA10023210	TRS.CHIP/PNP 2SA	DTA114EK(14) 0.2W/SMT-REEL	J5200114E0210
Q124		BA20007210	BA20007210	TRS.CHIP/NPN 2SC	DTC114YK (64),0.2W/SMT-REEL	J5220114Y0210
R101		nsp	NN05102610	R,CHIP THICK	1k-J,1/16W-1608REEL	C20001026M160
R102		nsp	NN05102610	R,CHIP THICK	1k-J,1/16W-1608REEL	C20001026M160
R103		nsp	NN05102610	R,CHIP THICK	1k-J,1/16W-1608REEL	C20001026M160
R104		nsp	NN05103610	R,CHIP THICK	10k-J,1/16W-1608REEL	C20001036M160
R105		nsp	NN05103610	R,CHIP THICK	10k-J,1/16W-1608REEL	C20001036M160
R106		nsp	NN05103610	R,CHIP THICK	10k-J,1/16W-1608REEL	C20001036M160
R107		nsp	nsp	R,CARBON FILM	100k-J,1/5W-52RE-AX	C00001046P520
R108		nsp	NN05103610	R,CHIP THICK	10k-J,1/16W-1608REEL	C20001036M160
R113		nsp	NN05470610	R,CHIP THICK	47-J,1/16W-1608REEL	C20004706M160
R114		nsp	NN05103610	R,CHIP THICK	10k-J,1/16W-1608REEL	C20001036M160
R115		nsp	NN05222610	R,CHIP THICK	2.2k-J,1/16W-1608REEL	C20002226M160
R116		nsp	NN05103610	R,CHIP THICK	10k-J,1/16W-1608REEL	C20001036M160
R120		nsp	nsp	R,FIXED,CARBON FILM	RD-T-1/6WJ-68 1.9*3.2 52REEL	N111112668010
R121		nsp	nsp	R,FIXED,CARBON FILM	RD-T-1/6WJ-68 1.9*3.2 52REEL	N111112668010
R122		nsp	NN05680610	R,CHIP THICK	68-J,1/16W-1608REEL	C20006806M160
R124		nsp	NN05680610	R,CHIP THICK	68-J,1/16W-1608REEL	C20006806M160
R125		nsp	NN05680610	R,CHIP THICK	68-J,1/16W-1608REEL	C20006806M160
R126		nsp	NN05750610	R,CHIP THICK	75-J,1/16W-1608REEL	C20007506M160
R127		nsp	NN05000610	R,CHIP THICK	0-J,1/16W-1608REEL	C20000006M160
R136		nsp	NN05104610	R,CHIP THICK	100k-J,1/16W-1608REEL	C20001046M160

NOTE : *nsp* PART IS LISTED FOR REFERENCE ONLY, MARANTZ WILL NOT SUPPLY THESE PARTS.

POS. NO	VERS. COLOR	PART NO. (FOR EUR)	PART NO. (MJI)	DESCRIPTION		
R137		nsp	NN05104610	R,CHIP THICK	100k-J,1/16W-1608REEL	C20001046M160
R139		nsp	NN05472610	R,CHIP THICK	4.7k-J,1/16W-1608REEL	C20004726M160
R141		nsp	NN05750610	R,CHIP THICK	75-J,1/16W-1608REEL	C20007506M160
R143		nsp	NN05103610	R,CHIP THICK	10k-J,1/16W-1608REEL	C20001036M160
R144		nsp	NN05101610	R,CHIP THICK	100-J,1/16W-1608REEL	C20001016M160
R145		nsp	NN05750610	R,CHIP THICK	75-J,1/16W-1608REEL	C20007506M160
R147		nsp	NN05750610	R,CHIP THICK	75-J,1/16W-1608REEL	C20007506M160
R148		nsp	NN05102610	R,CHIP THICK	1k-J,1/16W-1608REEL	C20001026M160
R149		nsp	NN05750610	R,CHIP THICK	75-J,1/16W-1608REEL	C20007506M160
R150		nsp	NN05102610	R,CHIP THICK	1k-J,1/16W-1608REEL	C20001026M160
R151		nsp	NN05473610	R,CHIP THICK	47k-J,1/16W-1608REEL	C20004736M160
R152		nsp	NN05102610	R,CHIP THICK	1k-J,1/16W-1608REEL	C20001026M160
R153		nsp	NN05133610	R,CHIP THICK	13k-J,1/16W-1608REEL	C20001336M160
R154		nsp	NN05123610	R,CHIP THICK	12k-J,1/16W-1608REEL	C20001236M160
R155		nsp	NN05123610	R,CHIP THICK	12k-J,1/16W-1608REEL	C20001236M160
R156		nsp	NN05123610	R,CHIP THICK	12k-J,1/16W-1608REEL	C20001236M160
R157		nsp	NN05133610	R,CHIP THICK	13k-J,1/16W-1608REEL	C20001336M160
R158		nsp	NN05123610	R,CHIP THICK	12k-J,1/16W-1608REEL	C20001236M160
R159		nsp	NN05133610	R,CHIP THICK	13k-J,1/16W-1608REEL	C20001336M160
R160		nsp	NN05123610	R,CHIP THICK	12k-J,1/16W-1608REEL	C20001236M160
R161		nsp	NN05133610	R,CHIP THICK	13k-J,1/16W-1608REEL	C20001336M160
R162		nsp	NN05123610	R,CHIP THICK	12k-J,1/16W-1608REEL	C20001236M160
R163		nsp	NN05123610	R,CHIP THICK	12k-J,1/16W-1608REEL	C20001236M160
R164		nsp	NN05202610	R,CHIP THICK	2k-J,1/16W-1608REEL	C20002026M160
R165		nsp	NN05152610	R,CHIP THICK	1.5k-J,1/16W-1608REEL	C20001526M160
R166		nsp	NN05392610	R,CHIP THICK	3.9k-J,1/16W-1608REEL	C20003926M160
R168		nsp	nsp	R,CARBON FILM	2.2-J,1/4W-52RE-AX	C0002R2063520
R169		nsp	NN05472610	R,CHIP THICK	4.7k-J,1/16W-1608REEL	C20004726M160
R170		nsp	NN05101610	R,CHIP THICK	100-J,1/16W-1608REEL	C20001016M160
R171		nsp	NN05101610	R,CHIP THICK	100-J,1/16W-1608REEL	C20001016M160
R172		nsp	NN05472610	R,CHIP THICK	4.7k-J,1/16W-1608REEL	C20004726M160
R173		nsp	NN05472610	R,CHIP THICK	4.7k-J,1/16W-1608REEL	C20004726M160
R174		nsp	NN05472610	R,CHIP THICK	4.7k-J,1/16W-1608REEL	C20004726M160
R175		nsp	NN05103610	R,CHIP THICK	10k-J,1/16W-1608REEL	C20001036M160
R176		nsp	NN05154610	R,CHIP THICK	150k-J,1/16W-1608REEL	C20001546M160
R177		nsp	NN05103610	R,CHIP THICK	10k-J,1/16W-1608REEL	C20001036M160
R178		nsp	NN05101610	R,CHIP THICK	100-J,1/16W-1608REEL	C20001016M160
R179		nsp	nsp	R,FIXED,CARBON FILM	RD-T-1/6WJ-10K 1.9*3.2 52REEL	N111112610310
R182		nsp	nsp	R,FIXED,METAL	RSS-RT-1WJ-33 2.6*6.2(MAX)	N112135633011
R183		nsp	NN05103610	R,CHIP THICK	10k-J,1/16W-1608REEL	C20001036M160
R184		nsp	NN05473610	R,CHIP THICK	47k-J,1/16W-1608REEL	C20004736M160
R185		nsp	NN05123610	R,CHIP THICK	12k-J,1/16W-1608REEL	C20001236M160
R186		nsp	NN05680610	R,CHIP THICK	68-J,1/16W-1608REEL	C20006806M160
R187		nsp	NN05472610	R,CHIP THICK	4.7k-J,1/16W-1608REEL	C20004726M160
R188		nsp	NN05103610	R,CHIP THICK	10k-J,1/16W-1608REEL	C20001036M160
	RELAY101	*LY000350R	*LY000350R	RELAY	SG-G6K2P-001A DC12V	G680120102010
	RELAY102	*LY000350R	*LY000350R	RELAY	SG-G6K2P-001A DC12V	G680120102010
	RELAY103	*LY000350R	*LY000350R	RELAY	SG-G6K2P-001A DC12V	G680120102010
XT101		*FQ000350R	*FQ000350R	RESONATOR,CERAMIC	CST10.0MTW-TF01/REEL	E830100000050
XT102		*JX000830R	*JX000830R	CRYSTAL	X-TAL MX-38T(32.768KHZ) NDK	E800327680050
				FRONT PCB		
C801		nsp	DK96103300	C,CERAMIC CHIP HIK	0.01µF-K/50V-1608REEL	D011103777160
C802		nsp	DK96103300	C,CERAMIC CHIP HIK	0.01µF-K/50V-1608REEL	D011103777160
C803		nsp	DD95101300	C,CERAMIC CHIP T.C	100pF-J/50V-1608REEL	D010101167160
C804						
}		nsp	DK96104300	C,CERAMIC CHIP HIK	0.1µF-K/50V-1608REEL	D011104577160
C807						
C808		nsp	nsp	C,ELECT GE 85C	100µF-M/10V,6.3*5-5RE SY	D040101082050
C809		nsp	DK96104300	C,CERAMIC CHIP HIK	0.1µF-K/50V-1608REEL	D011104577160
C812		nsp	DK96104300	C,CERAMIC CHIP HIK	0.1µF-K/50V-1608REEL	D011104577160
C813		nsp	DK96103300	C,CERAMIC CHIP HIK	0.01µF-K/50V-1608REEL	D011103777160
C814		nsp	DK96103300	C,CERAMIC CHIP HIK	0.01µF-K/50V-1608REEL	D011103777160
CP801		nsp	nsp	CN.FPC 1.0MM	SCB 2119-00 19P ST	L130211900010

NOTE : *nsp* PART IS LISTED FOR REFERENCE ONLY, MARANTZ WILL NOT SUPPLY THESE PARTS.

POS. NO	VERS. COLOR	PART NO. (FOR EUR)	PART NO. (MJI)	DESCRIPTION		
D801		*HI100970R	*HI100970R	LED,ROUND	HL-50CDG GREEN MILKY RESIN	K50000020010
D802		*HI100970R	*HI100970R	LED,ROUND	HL-50CDG GREEN MILKY RESIN	K50000020010
D803		*HI100980R	*HI100980R	LED,ROUND	PI5-RD,GR/HLD50RGR,DUAL	K500052003090
D804		nsp	*HD201580R	D,SWITCHING CHIP	1SS355USM(A)	K005035500010
D805		nsp	*HD201580R	D,SWITCHING CHIP	1SS355USM(A)	K005035500010
IC801		*HC107180R	*HC107180R	IC,LINEAR-DRIVER	M66005FP-SOP64P /FL DRIVER	J127660050010
J802		nsp	NN05000610	R,CHIP THICK	0-J,1/16W-1608REEL	C20000006M160
J803		nsp	NN05000610	R,CHIP THICK	0-J,1/16W-1608REEL	C20000006M160
Q801						
∫		BA20005210	BA20005210	TRS.CHIP/NPN 2SC	DTC114EK(24),0.2W/SMT-REEL	J5220114E0210
Q804						
R801		nsp	NN05101610	R,CHIP THICK	100-J,1/16W-1608REEL	C20001016M160
R802		nsp	NN05101610	R,CHIP THICK	100-J,1/16W-1608REEL	C20001016M160
R803		nsp	NN05103610	R,CHIP THICK	10k-J,1/16W-1608REEL	C20001036M160
R804		nsp	NN05273610	R,CHIP THICK	27k-J,1/16W-1608REEL	C20002736M160
R805		nsp	NN05102610	R,CHIP THICK	1k-J,1/16W-1608REEL	C20001026M160
R806		nsp	NN05102610	R,CHIP THICK	1k-J,1/16W-1608REEL	C20001026M160
R807		nsp	NN05102610	R,CHIP THICK	1k-J,1/16W-1608REEL	C20001026M160
R808		nsp	NN05470610	R,CHIP THICK	47-J,1/16W-1608REEL	C20004706M160
R809		nsp	NN05103610	R,CHIP THICK	10k-J,1/16W-1608REEL	C20001036M160
R810		nsp	NN05102610	R,CHIP THICK	1k-J,1/16W-1608REEL	C20001026M160
R811		nsp	NN05271610	R,CHIP THICK	270-J,1/16W-1608REEL	C20002716M160
R813		nsp	NN05103610	R,CHIP THICK	10k-J,1/16W-1608REEL	C20001036M160
R814		nsp	NN05102610	R,CHIP THICK	1k-J,1/16W-1608REEL	C20001026M160
R815		nsp	NN05271610	R,CHIP THICK	270-J,1/16W-1608REEL	C20002716M160
R817		nsp	NN05472610	R,CHIP THICK	4.7k-J,1/16W-1608REEL	C20004726M160
R818		nsp	NN05102610	R,CHIP THICK	1k-J,1/16W-1608REEL	C20001026M160
R820		nsp	NN05271610	R,CHIP THICK	270-J,1/16W-1608REEL	C20002716M160
R821		nsp	NN05271610	R,CHIP THICK	270-J,1/16W-1608REEL	C20002716M160
R823						
∫		nsp	NN05103610	R,CHIP THICK	10k-J,1/16W-1608REEL	C20001036M160
R826						
R827		nsp	NN05182610	R,CHIP THICK	1.8k-J,1/16W-1608REEL	C20001826M160
R828		nsp	NN05272610	R,CHIP THICK	2.7k-J,1/16W-1608REEL	C20002726M160
R829		nsp	NN05472610	R,CHIP THICK	4.7k-J,1/16W-1608REEL	C20004726M160
R830		nsp	NN05822610	R,CHIP THICK	8.2k-J,1/16W-1608REEL	C20008226M160
R831		nsp	NN05472610	R,CHIP THICK	4.7k-J,1/16W-1608REEL	C20004726M160
R832		nsp	NN05272610	R,CHIP THICK	2.7k-J,1/16W-1608REEL	C20002726M160
R833		nsp	NN05182610	R,CHIP THICK	1.8k-J,1/16W-1608REEL	C20001826M160
R834		nsp	NN05822610	R,CHIP THICK	8.2k-J,1/16W-1608REEL	C20008226M160
R835		nsp	NN05472610	R,CHIP THICK	4.7k-J,1/16W-1608REEL	C20004726M160
R836		nsp	NN05272610	R,CHIP THICK	2.7k-J,1/16W-1608REEL	C20002726M160
R837		nsp	NN05182610	R,CHIP THICK	1.8k-J,1/16W-1608REEL	C20001826M160
RM801		*HW100520R	*HW100520R	MODULE,REMOCON	NJL64H380A	E940643800000
S801						
∫		*SP001140R	*SP001140R	SW,TACT	SKHV10920A,5MM/260G-REEL	G180000270010
S804						
S805		*SP001220R	*SP001220R	SW,TACT	THHH582GAA /VERTICAL P=4.5	G180040520020
S806		*SP001140R	*SP001140R	SW,TACT	SKHV10920A,5MM/260G-REEL	G180000270010
S807		*SP001140R	*SP001140R	SW,TACT	SKHV10920A,5MM/260G-REEL	G180000270010
S808		*SP001220R	*SP001220R	SW,TACT	THHH582GAA /VERTICAL P=4.5	G180040520020
S809						
∫		*SP001140R	*SP001140R	SW,TACT	SKHV10920A,5MM/260G-REEL	G180000270010
S812						
S813		*SP001220R	*SP001220R	SW,TACT	THHH582GAA /VERTICAL P=4.5	G180040520020
VFD801		*HQ300600R	*HQ300600R	DISPLAY,FLT	16-ST-62GN 89.6*25 DV110/N1S	K530166200010
VR801		*SR000170R	*SR000170R	SW,ROTARY	EC12B24S2033ZZZ/WITH PUSH	G120122420330
Z801		HD30621000	HD30621000	D,ZENER	MTZJ6.2B-0.5W/5MA-52MM	K06006R244520
				S-VIDEO PCB		
C169		nsp	nsp	C,CERAMIC HIK AXIAL	0.1µF-Z/50V-52RE	D005104597530
C170		nsp	nsp	C,CERAMIC HIK AXIAL	0.1µF-Z/50V-52RE	D005104597530
C208		nsp	DK96104300	C,CERAMIC CHIP HIK	0.1µF-K/50V-1608REEL	D011104577160
CP205		nsp	nsp	CN.WAFER 2.0MM	53015-0910 9P ANGLE	L101530150910

NOTE : *nsp* PART IS LISTED FOR REFERENCE ONLY, MARANTZ WILL NOT SUPPLY THESE PARTS.

POS. NO	VERS. COLOR	PART NO. (FOR EUR)	PART NO. (MJI)	DESCRIPTION		
CP206		nsp	nsp	CN.WAFER 2.0MM	53015-0310 3P ANGLE	L101530150310
J202						
}		nsp	nsp	CN,WIRE 1P	JUMPER (0.6/52MM)	L045084006040
J207						
JACK204		*YT003090R	*YT003090R	TERMINAL CINCH 6PIN	JB060015EN	G603060015000
JACK205		*YT003070R	*YT003070R	TERMINAL CINCH 1PIN	Y/CJACK, 205902004/YKF51-5508	G600000010020
L201						
}		*FC900290R	*FC900290R	BEAD,COIL CHIP	HB-IT2012-121JT 2012REEL	7611010000020
L206						
L213		*FC900290R	*FC900290R	BEAD,COIL CHIP	HB-IT2012-121JT 2012REEL	7611010000020
R140		nsp	nsp	R,FIXED,CARBON FILM	RD-T-1/6WJ-47 1.9*3.2 52REEL	N111112647010
R207		nsp	NN05000610	R,CHIP THICK	0-J,1/16W-1608REEL	C20000006M160
SW201		*SS000700R	*SS000700R	SW,SLIDE	SSAF112NA011	G060112011010
				SCART PCB		
C204		nsp	DK96104300	C,CERAMIC CHIP HIK	0.1µF-K/50V-1608REEL	D011104577160
C205		nsp	DK96102300	C,CERAMIC CHIP HIK	1000pF-K/50V-1608REEL	D011102777160
C206		nsp	DK96104300	C,CERAMIC CHIP HIK	0.1µF-K/50V-1608REEL	D011104577160
C207		nsp	DK96102300	C,CERAMIC CHIP HIK	1000pF-K/50V-1608REEL	D011102777160
CP203		nsp	nsp	CN.WAFER 2.0MM	53015-0710 7P ANGLE	L101530150710
CP204		nsp	nsp	CN.WAFER 2.0MM	53015-0310 3P ANGLE	L101530150310
J208						
}		nsp	nsp	CN,WIRE 1P	JUMPER (0.6/52MM)	L045084006040
J212						
JACK203		*YT003060R	*YT003060R	JACK,MODULAR	DV110,SCART CS21C1110P	G40621C111000
JACK206		*YT003080R	*YT003080R	TERMINAL CINCH 2PIN	JE020059FN(GND) (BK,BK)	G601020170050
L207						
}		*FC900290R	*FC900290R	BEAD,COIL CHIP	HB-IT2012-121JT 2012REEL	7611010000020
L214						
R205		nsp	NN05750610	R,CHIP THICK	75-J,1/16W-1608REEL	C20007506M160
R206		nsp	NN05750610	R,CHIP THICK	75-J,1/16W-1608REEL	C20007506M160
R208		nsp	NN05391610	R,CHIP THICK	390-J,1/16W-1608REEL	C20003916M160
R209		nsp	*NN000490R	R,CHIP THICK	91-J,1/16W-1608REEL	C20009106M160
TP201		*LC107290R	*LC107290R	COIL,CHOKE	COIL TRANS MATCHING	D300010250000
				POWER SUPPLY(SMPS) PCB		
▲ F1		*FS001020R	*FS001020R	FUSE	T2AL/250V	G659202251010

NOTE : "nsp" PART IS LISTED FOR REFERENCE ONLY, MARANTZ WILL NOT SUPPLY THESE PARTS.