

# Service Manual

74 PM44/ 10B/15B

Integrated amplifier

---

This service manual explains them by extracting the different specifications from those of the model PM-44SE, based on the model PM-40SE. For both electrical and mechanical information on the after-sales service which is not stated, all information is described in the model PM-40SE service manual (Codenummer 4822 725 50913).

The dispatch of the parts for after-sales service has to be referred to this service manual, with the first priority.

For this reason, please use this service manual with referring to the model PM-40SE service manual, without fail.

---

# marantz®

---

## model PM-44SE

First issue; 1993  
4822 725 51023

PCS 68 436

## TECHNICAL SPECIFICATIONS (DIN)

### Power Amplifier Section

IHF Dynamic Power	
2 ohms	: 100W
4 ohms	: 80W
8 ohms	: 54W

Power Output Per Channel	
DIN 8 ohms 1 kHz 1% THD	: 48W
FTC 4 ohms 40—20 kHz 0.15% THD	: 55W
FTC 8 ohms 40—20 kHz 0.08% THD	: 43W

Total Harmonic Distortion at 8 ohms	: 0.015%
I. M. Distortion at 8 ohms	: 0.015%
Damping Factor	: 100

### Phono Amplifier Section

MM Cartridge Input	
Frequency Difference	: $\pm 0.5$ dB
Signal to Noise Ratio (A weighted)	: 87 dB
Input Sensitivity	: 2.5 mV
Input Impedance	: 47k Ohms

### High Level Section

Frequency Response	: 10—60 kHz
Signal to Noise Ratio (A weighted)	: 87 dB
Input Sensitivity	: 150 mV
Input Impedance	: 33k Ohms
Tape Output Level [Phono (MM) 5 mV 1 kHz Input ]	: 300 mV
Tape Output Impedance (Phono)	: 220 Ohms
	: 440 Ohms (only/10B version)

### General

Power Requirements	
/ 10B/ 15B	: 230V/ 240V

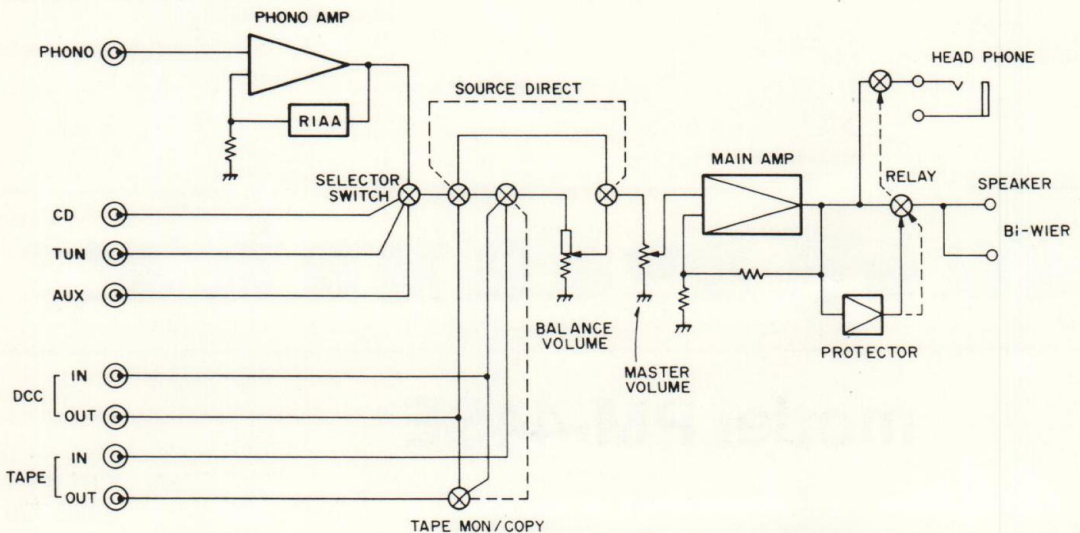
Power Consumption (Rated Power)	
AB Class Moode	: 170W
A Class Moode	: —

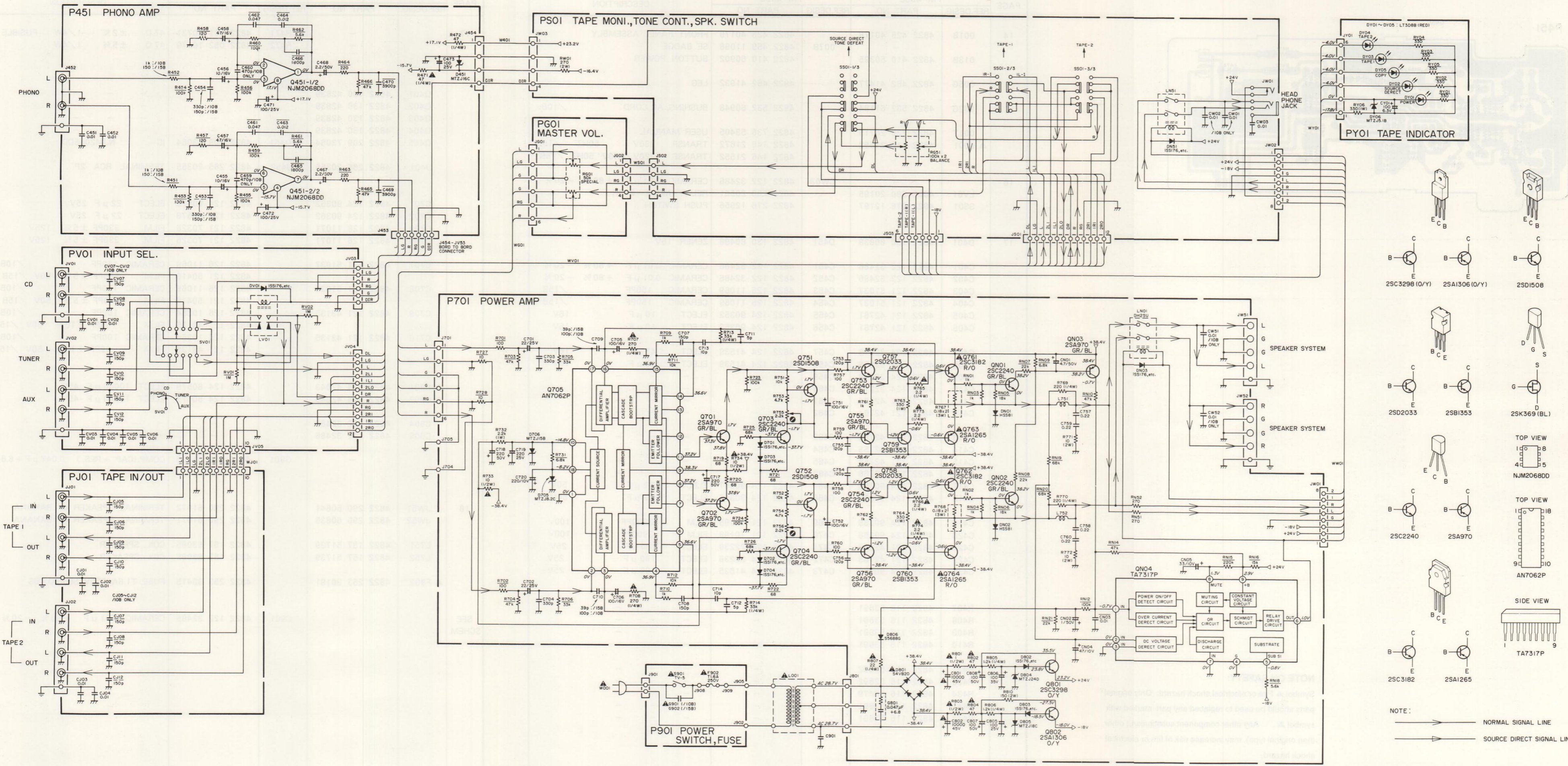
Dimensions	
Panel Width	: 420 mm
Panel Height	: 118 mm
Depth	: 280 mm

Weight	
Unit alone	: 10 kg

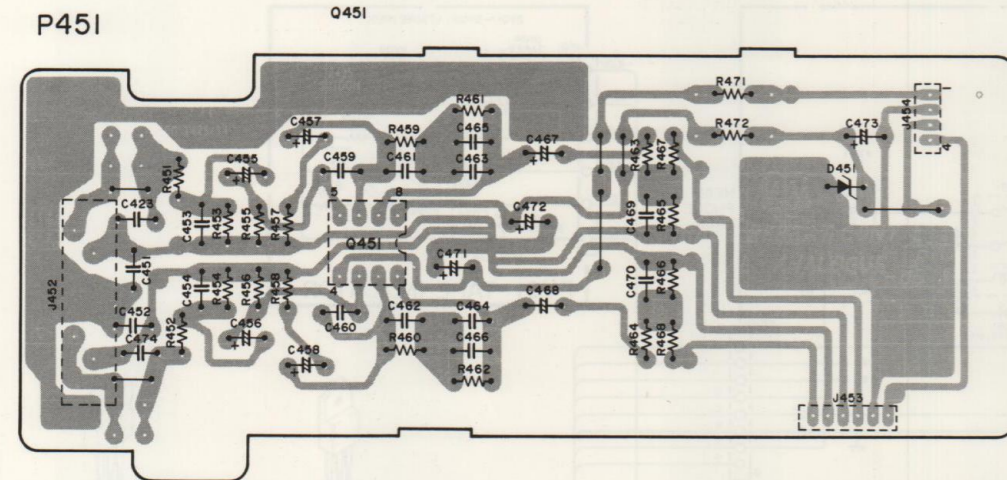
Specifications and appearance are subject to change for modification without notice.

### BLOCK DIAGRAM





PARTS LOCATION



**NOTE ON SAFETY:**

Symbol ▲ Fire or electrical shock hazard. Only original parts should be used to replaced any part marked with symbol ▲. Any other component substitution ( other than original type), may increase risk of fire or electrical shock hazard.

DIFFERENT PARTS LIST BETWEEN MODEL PM-40SE AND MODEL PM-44SE

PAGE	PM-40SE		PM-44SE		DESCRIPTION
	REF.DESIG.	PART NO.	REF.DESIG.	PART NO.	
14	001B	4822 425 40178	007B	4822 425 40179	FRONT PANEL ASSEMBLY
	013B	4822 410 60395		4822 459 11096	SE BADGE
	005G	4822 462 41477		4822 410 60902	BUTTON, POWER
	902G	4822 532 61184		4822 462 41932	LEG
	001T	4822 736 20715		4822 532 60948	BUSHING, AC CORD /10B
	▲ L001	4822 146 21552		4822 736 53405	4822 146 21672
16				4822 146 21552	TRANSF. 230V 50HZ /10B
				4822 146 21552	TRANSF. 220V/240V 50HZ /15B
17			CW03	4822 122 32486	CERAMIC 0.01 μ F + 80 % - 20 %
	LV01	4822 280 20195		4822 280 20501	RELAY MR62 - 24SR
	SS01	4822 276 12197		4822 276 12956	PUSH SWITCH
	D401	4822 130 80838	D451	4822 130 80498	ZENER 16V
	C401	4822 122 32486	C451	4822 122 32486	CERAMIC 0.01 μ F + 80 % - 20 %
	C402	4822 122 32486	C452	4822 122 32486	CERAMIC 0.01 μ F + 80 % - 20 %
	C403	4822 121 51037	C453	4822 126 11069	CERAMIC 150PF /15B
	C404	4822 121 51037	C454	4822 126 11069	CERAMIC 150PF /15B
	C405	4822 121 42761	C455	4822 124 90352	ELECT 10 μ F 16V
	C406	4822 121 42761	C456	4822 124 90352	ELECT 10 μ F 16V
	C407	4822 124 22278	C457	4822 124 41539	ELECT 47 μ F 16V
	C408	4822 124 22278	C458	4822 124 41539	ELECT 47 μ F 16V
C409	4822 124 22279	C459	-	-	
C410	4822 124 22279	C460	-	-	
C411	4822 121 42764	C461	-	-	
C412	4822 121 42764	C462	-	-	
C413	4822 121 42755	C463	-	-	
C414	4822 121 42755	C464	-	-	
C415	4822 121 42758	C465	-	-	
C416	4822 121 42758	C466	-	-	
C417	4822 124 90358	C467	4822 124 90357	ELECT 2.2 μ F 50V	
C418	4822 124 90358	C468	4822 124 90357	ELECT 2.2 μ F 50V	
C419	4822 124 90358	C469	4822 121 70198	FILM 3900PF 100V	
C420	4822 124 90358	C470	4822 121 70198	FILM 3900PF 100V	
C421	4822 121 42763	C471	4822 124 22238	ELECT 100 μ F 25V	
C422	4822 121 42763	C472	4822 124 22238	ELECT 100 μ F 25V	
C430	4822 124 90365	C473	4822 124 41535	ELECT 100 μ F 25V	
R407	4822 116 53691		-	-	
R408	4822 116 53691		-	-	
R409	4822 116 53691		-	-	
R410	4822 116 53691		-	-	
R431	4822 116 52892		-	-	
R432	4822 116 52892		-	-	
R434	4822 116 53479		-	-	
R441	4822 116 53691		-	-	
R442	4822 116 53691		-	-	

SCHEMATIC DIAGRAM

PAGE	PM-40SE		PM-44SE		DESCRIPTION
	REF.DESIG.	PART NO.	REF.DESIG.	PART NO.	
17		-	▲ R471	4822 111 90731	47 Ω ± 2 % 1/4W FUSIBLE
		-	R472	4822 052 10479	47 Ω ± 5 % 1/4W
18	Q401	4822 130 42839		-	-
	Q402	4822 130 42839		-	-
	Q403	4822 130 42839		-	-
	Q404	4822 130 42839		-	-
	Q405	4822 209 73064	Q451	4822 209 73064	IC NJM2068DD
	J401	4822 265 20355	J452	4822 265 20355	TERMINAL RCA 2P
	C701	4822 124 90362		4822 124 80578	ELECT 22 μ F 25V
	C702	4822 124 90362		4822 124 80578	ELECT 22 μ F 25V
	C703	4822 126 11071		4822 121 70326	FILM 330PF ± 5 % 125V
	C704	4822 126 11071		4822 121 70326	FILM 330PF ± 5 % 125V
C707	4822 121 51037		4822 126 11069	CERAMIC 150PF /10B	
18				4822 121 50416	FILM 150PF ± 5 % 50V /15B
				4822 126 11069	CERAMIC 150PF /10B
C708	4822 121 51037		4822 121 50416	FILM 150PF ± 5 % 50V /15B	
18				4822 126 10364	CERAMIC 100PF /10B
				4822 121 43135	FILM 39PF ± 10 % 50V /15B
C710	4822 121 43135		4822 126 10364	CERAMIC 100PF /10B	
			4822 121 43135	FILM 39PF ± 10 % 50V /15B	
▲ C801	4822 124 42043		4822 124 80579	ELECT 10000 μ F 45V	
▲ C802	4822 124 42043		4822 124 80579	ELECT 10000 μ F 45V	
C804	4822 122 32486		-	-	
C809	4822 122 32486		-	-	
		G801	4822 126 11235	COMP.(CAP. + RES.) 0.047 μ F + 6.8 Ω	
18	JW51	4822 290 60841		4822 290 61072	TERMINAL, SPEAKER 4P BANANA
	JW52	4822 290 60836		4822 290 61071	TERMINAL, SPEAKER 4P BANANA
L751	4822 157 51739		4822 157 63085	COIL, SPEAKER	
L752	4822 157 51739		4822 157 63085	COIL, SPEAKER	
▲ F902	4822 253 30191		4822 253 30415	FUSE, T1.6A 250V SEMKO/BS	
SEE SCHEM.			C901	4822 122 32486	CERAMIC 0.01 μ F + 80 % - 20 %