

Service Manual

SW200/F1M, /K1M

Active Subwoofer

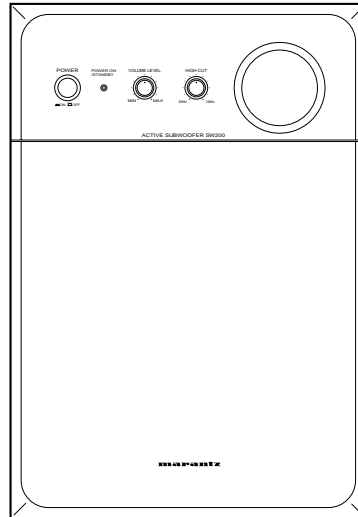


TABLE OF CONTENTS

| | |
|---|----|
| 1. TECHNICAL SPECIFICATIONS | 1 |
| 2. BLOCK DIAGRAM | 2 |
| 3. WIRING DIAGRAM | 3 |
| 4. SCHEMATIC DIAGRAM AND PARTS LOCATION | 5 |
| 5. EXPLODED VIEW AND PARTS LIST | 11 |
| 6. ELECTRICAL PARTS LIST | 13 |

Please use this service manual with referring to the user guide (D.F.U) without fail.
修理の際は、必ず取扱説明書を準備し操作方法を確認の上作業を行って下さい。

marantz®

SW200

MARANTZ DESIGN AND SERVICE

Using superior design and selected high grade components, **MARANTZ** company has created the ultimate in stereo sound. Only original **MARANTZ** parts can insure that your **MARANTZ** product will continue to perform to the specifications for which it is famous.

Parts for your **MARANTZ** equipment are generally available to our National Marantz Subsidiary or Agent.

ORDERING PARTS :

Parts can be ordered either by mail or by Fax.. In both cases, the correct part number has to be specified.

The following information must be supplied to eliminate delays in processing your order :

1. Complete address
2. Complete part numbers and quantities required
3. Description of parts
4. Model number for which part is required
5. Way of shipment
6. Signature : any order form or Fax. must be signed, otherwise such part order will be considered as null and void.

USA

MARANTZ AMERICA, INC.
1100 MAPLEWOOD DRIVE
ITASCA, IL. 60143
USA
PHONE : 630 - 741 - 0300
FAX : 630 - 741 - 0301

EUROPE / TRADING

MARANTZ EUROPE B.V.
P.O.BOX 80002, BUILDING SFF2
5600 JB EINDHOVEN
THE NETHERLANDS
PHONE : +31 - 40 - 2732241
FAX : +31 - 40 - 2735578

BRAZIL

PHILIPS DA AMAZONIA IND. ELET. ITDA
CENTRO DE INFORMACOES AO
CEP 04698-970
SAO PAULO, SP, BRAZIL
PHONE : 0800 - 123123(Discagem Direta Gratuita)
FAX : +55 11 534. 8988

PROFESSIONAL AMERICAS

SUPERSCOPE TECHNOLOGIES, INC.
MARANTZ PROFESSIONAL PRODUCTS
2640 WHITE OAK CIRCLE, SUITE A
AURORA, ILLINOIS 60504 USA
PHONE : 630 - 820 - 4800
FAX : 630 - 820 - 8103

PROFESSIONAL AUSTRALIA

TECHNICAL AUDIO GROUP PTY, LTD
558 DARLING STREET,
BALMAIN, NSW 2041,
AUSTRALIA
PHONE : 61 - 2 - 9810 - 5300
FAX : 61 - 2 - 9810 - 5355

CANADA

LENBROOK INDUSTRIES LIMITED
633 GRANITE COURT,
PICKERING, ONTARIO L1W 3K1
CANADA
PHONE : 905 - 831 - 6333
FAX : 905 - 831 - 6936

AUSTRALIA

QualiFI Pty Ltd,
24 LIONEL ROAD,
MT. WAVERLEY VIC 3149
AUSTRALIA
PHONE : +61 - (0)3 - 9543 - 1522
FAX : +61 - (0)3 - 9543 - 3677

THAILAND

MRZ STANDARD CO.,LTD
746 - 754 MAHACHAI ROAD.,
WANGBURAPAPIROM, PHRANAKORN,
BANGKOK, 10200 THAILAND
PHONE : +66 - 2 - 222 9181
FAX : +66 - 2 - 224 6795

SINGAPORE

WO KEE HONG DISTRIBUTION PTE LTD
130 JOO SENG ROAD
#03-02 OLIVINE BUILDING
SINGAPORE 368357
PHONE : +65 858 5535 / +65 381 8621
FAX : +65 858 6078

NEW ZEALAND

WILDASH AUDIO SYSTEMS NZ
14 MALVERN ROAD MT ALBERT
AUCKLAND NEW ZEALAND
PHONE : +64 - 9 - 8451958
FAX : +64 - 9 - 8463554

TAIWAN

PAI- YUING CO., LTD.
6 TH FL NO, 148 SUNG KIANG ROAD,
TAIPEI, 10429, TAIWAN R.O.C.
PHONE : +886 - 2 - 25221304
FAX : +886 - 2 - 25630415

MALAYSIA

WO KEE HONG ELECTRONICS SDN. BHD.
SUITE 8.1, LEVEL 8, MENARA GENESIS,
NO. 33, JALAN SULTAN ISMAIL,
50250 KUALA LUMPUR, MALAYSIA
PHONE : +60 3 - 2457677
FAX : +60 3 - 2458180

JAPAN *Technical*

MARANTZ JAPAN, INC.
35- 1, 7- CHOME, SAGAMIONO
SAGAMIHARA - SHI, KANAGAWA
JAPAN 228-8505
PHONE : +81 42 748 1013
FAX : +81 42 741 9190

日本マランツ株式会社

本社 〒228-8505
神奈川県相模原市相模大野7-35-1
営業本部 〒150-0022
東京都渋谷区恵比寿南1-11-9

KOREA

MK ENTERPRISES LTD.
ROOM 604/605, ELECTRO-OFFICETEL, 16-58,
3GA, HANGANG-RO, YONGSAN-KU, SEOUL
KOREA
PHONE : +822 - 3232 - 155
FAX : +822 - 3232 - 154

SHOCK, FIRE HAZARD SERVICE TEST :

CAUTION : After servicing this appliance and prior to returning to customer, measure the resistance between either primary AC cord connector pins (with unit NOT connected to AC mains and its Power switch ON), and the face or Front Panel of product and controls and chassis bottom.

Any resistance measurement less than 1 Megohms should cause unit to be repaired or corrected before AC power is applied, and verified before it is return to the user/customer.

Ref. UL Standard No. 1492.

In case of difficulties, do not hesitate to contact the Technical Department at above mentioned address.

1. TECHNICAL SPECIFICATIONS

AMPLIFIER

Output 70 W (EIAJ THD 10%)
Input Terminals Line / SPK.
Output Terminals SPK.
S/N Ratio 95 dB

SPEAKER

Type 1-way Bass Ref type
Playback Frequency Response 30 ~ 200 Hz (-10 dB)
Drive Unit Magnetically shielded woofer with 200mm cone x 1
High Cut Filter 50 ~ 150 Hz Continuously variable (-24 dB / oct.)

POWER SUPPLY

Power Supply AC 100V, 50 / 60 Hz (/ F)
AC 110 - 115V / 220 - 230V, 50 / 60 Hz (/ K)
Rated power consumption 39 W

APPEARANCE

Maximum External Dimensions 235 x 340 x 318 mm (Width x Height x Depth)
Weight 8.4 kg

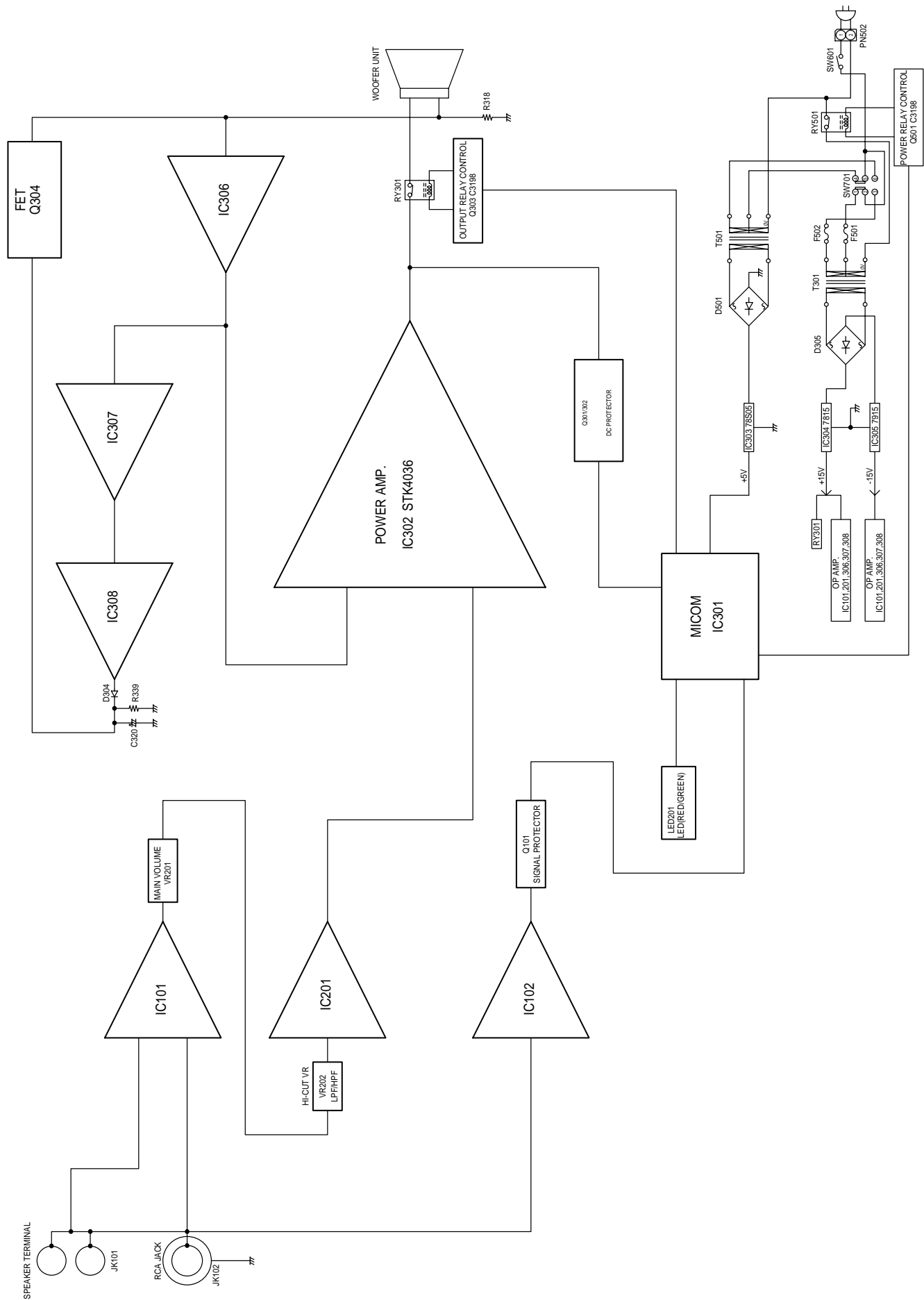
ACCESSORIES

Audio Cable (3m - RCA Pin plug) 1
Speaker Cable (4 m) 2
User's Manual 1

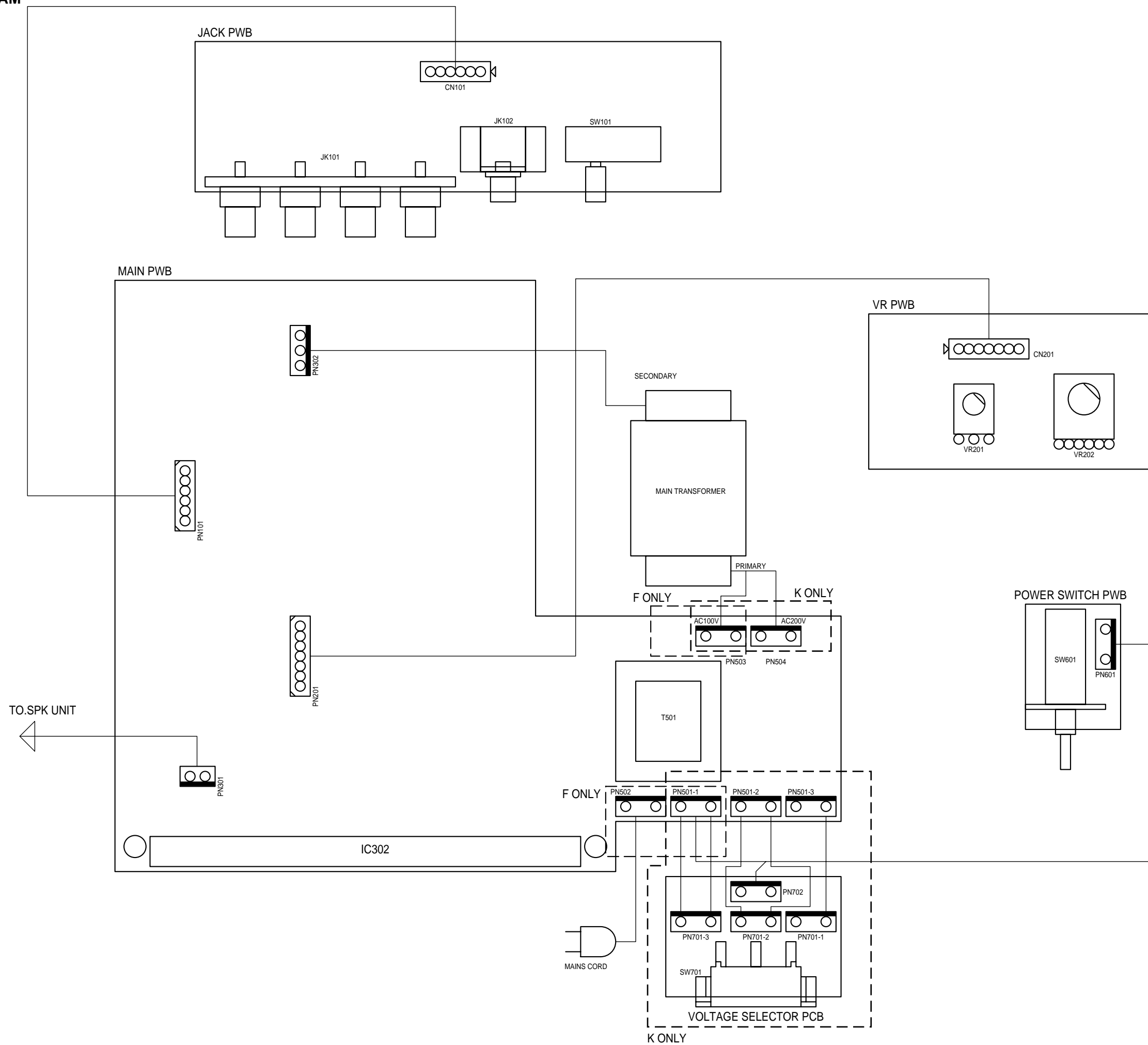
* The SW200 drive unit has a magnetically shielded design, but it may cause color irregularities on television screens if placed close to the set. In this case, increase the distance between the television and the SW200 unit accordingly.

* Specifications and appearance are subject to change without notice due to improvements.

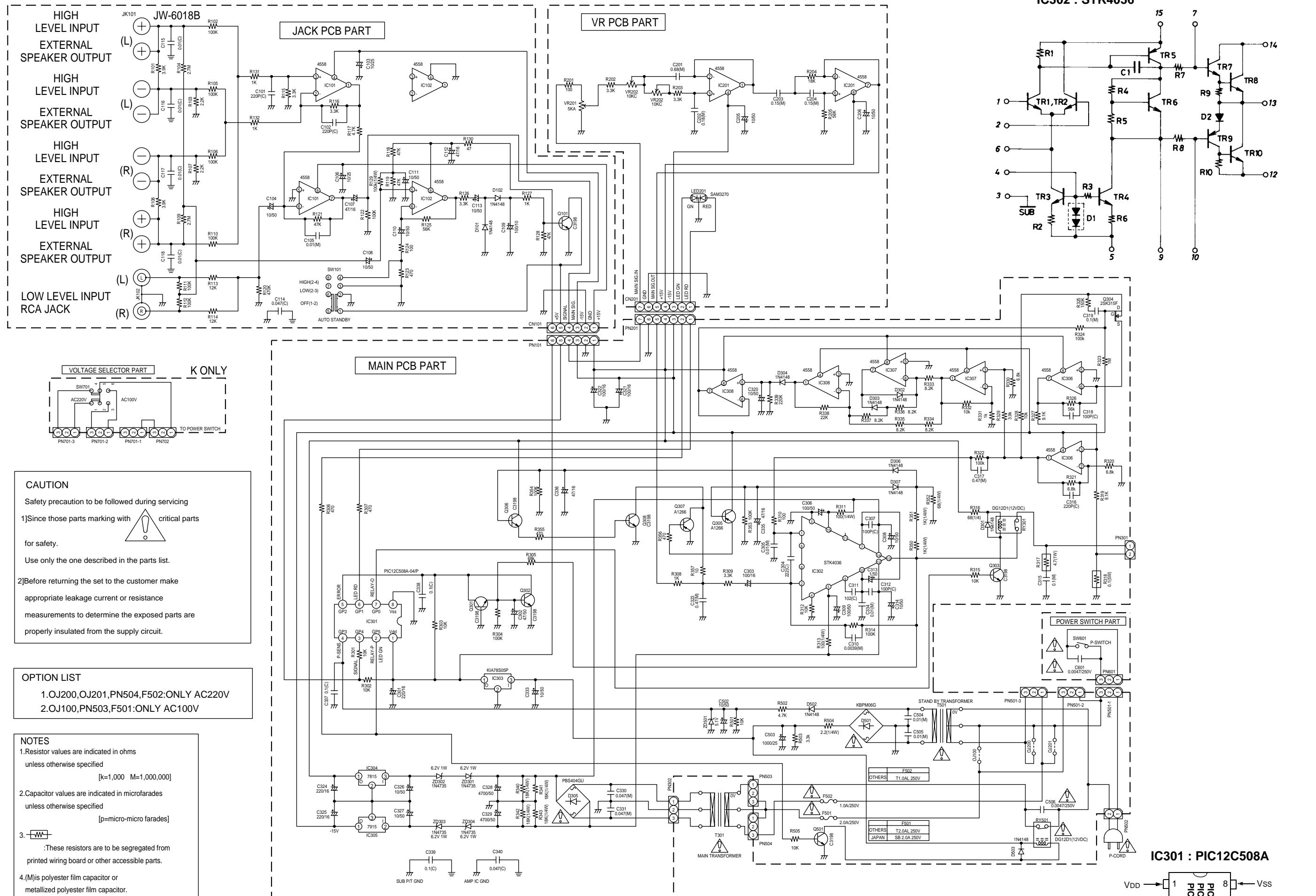
2. BLOCK DIAGRAM



3. WIRING DIAGRAM



4. SCHEMATIC DIAGRAM AND PARTS LOCATION



CAUTION
 Safety precaution to be followed during servicing

1) Since those parts marking with critical parts for safety.
 Use only the one described in the parts list.

2) Before returning the set to the customer make appropriate leakage current or resistance measurements to determine the exposed parts are properly insulated from the supply circuit.

OPTION LIST

1. OJ200, OJ201, PN504, F502: ONLY AC220V
 2. OJ100, PN503, F501: ONLY AC100V

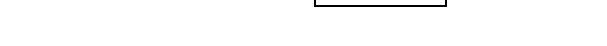
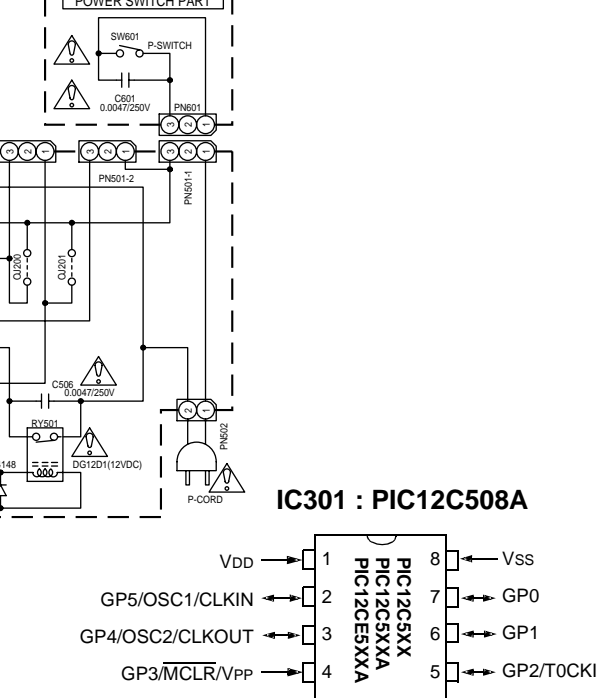
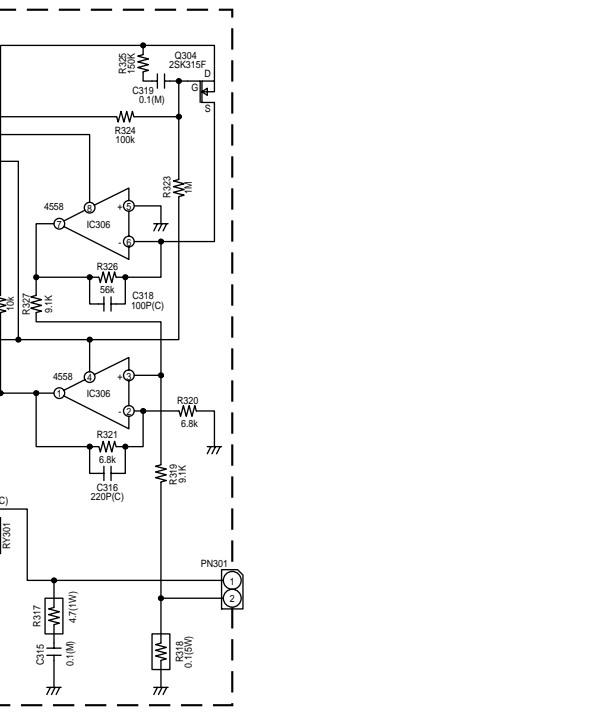
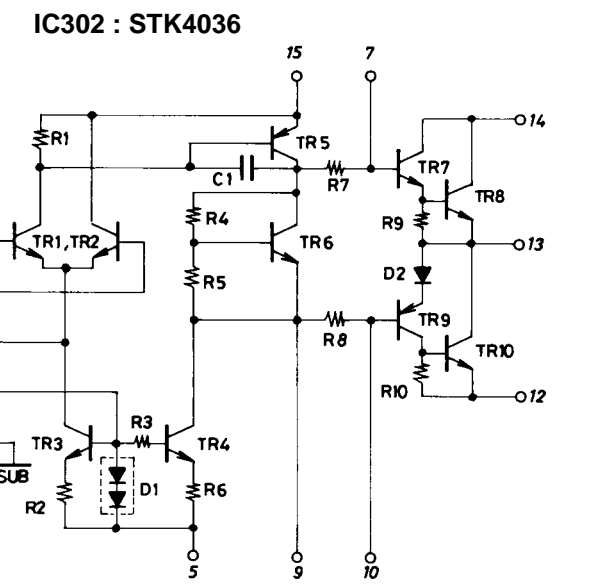
NOTES

1. Resistor values are indicated in ohms unless otherwise specified
 [k=1,000 M=1,000,000]

2. Capacitor values are indicated in microfarads unless otherwise specified
 [p=micro-micro farads]

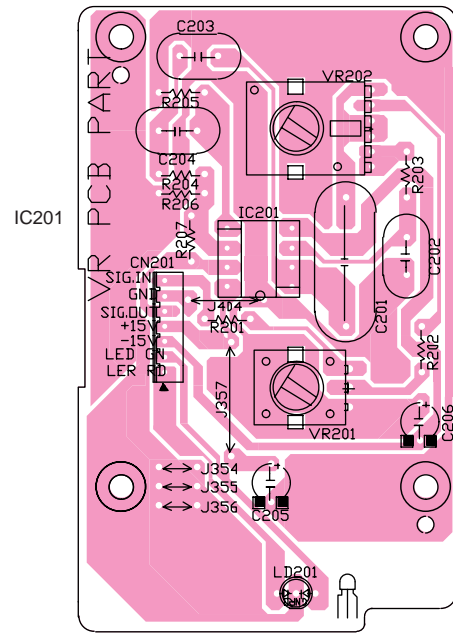
3. : These resistors are to be segregated from printed wiring board or other accessible parts.

4. (M) is polyester film capacitor or metallized polyester film capacitor.

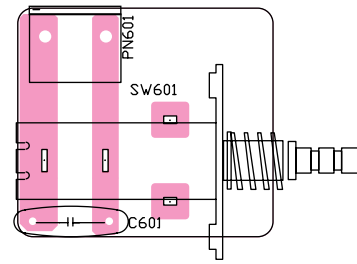


(PARTS SIDE)

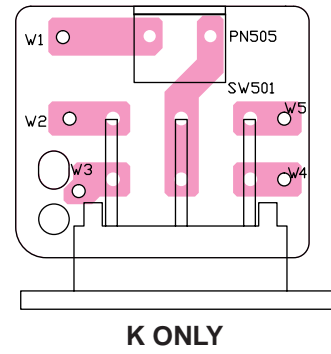
VR PCB



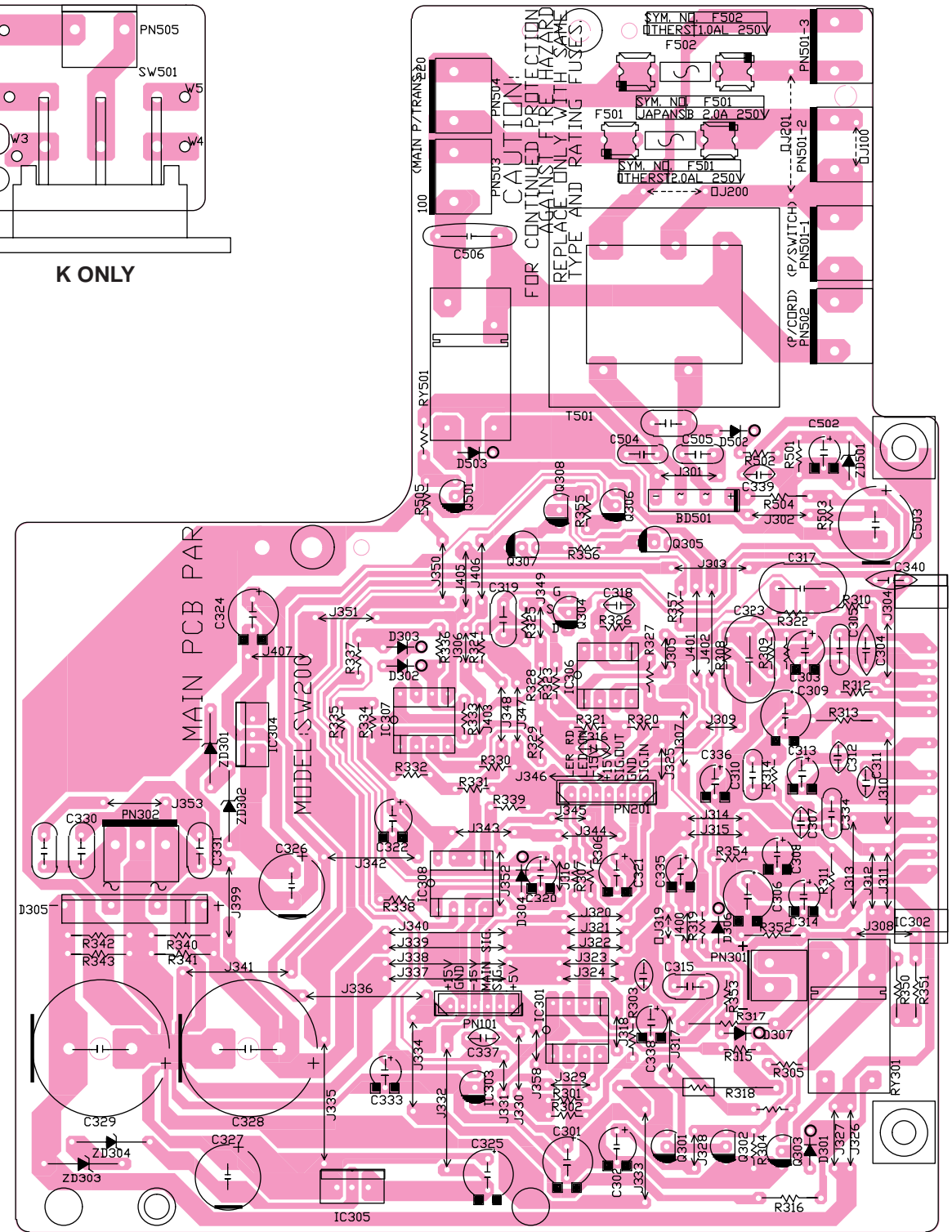
POWER SWITCH PCB



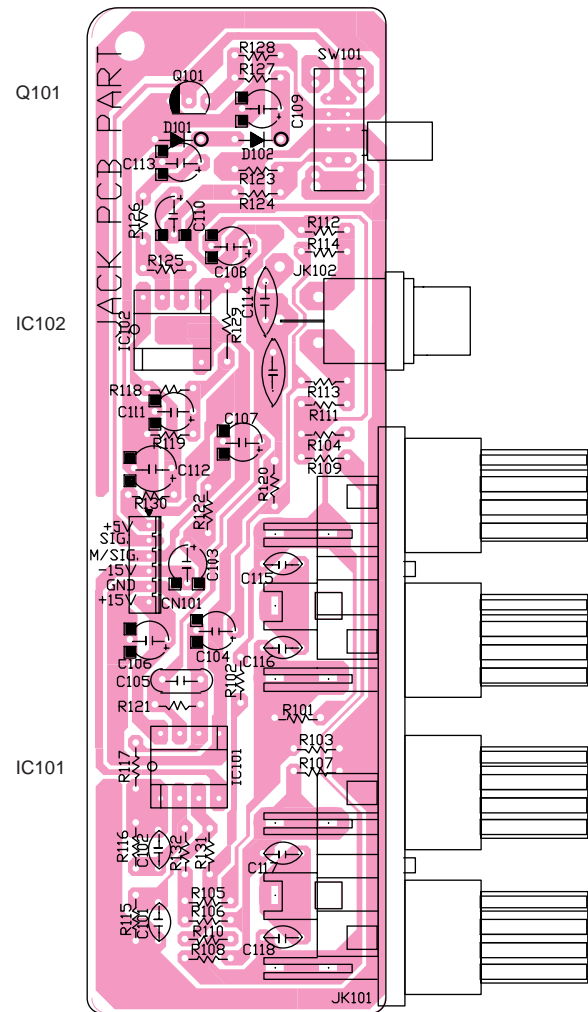
VOLTAGE SELECTOR PCB



MAIN PCB

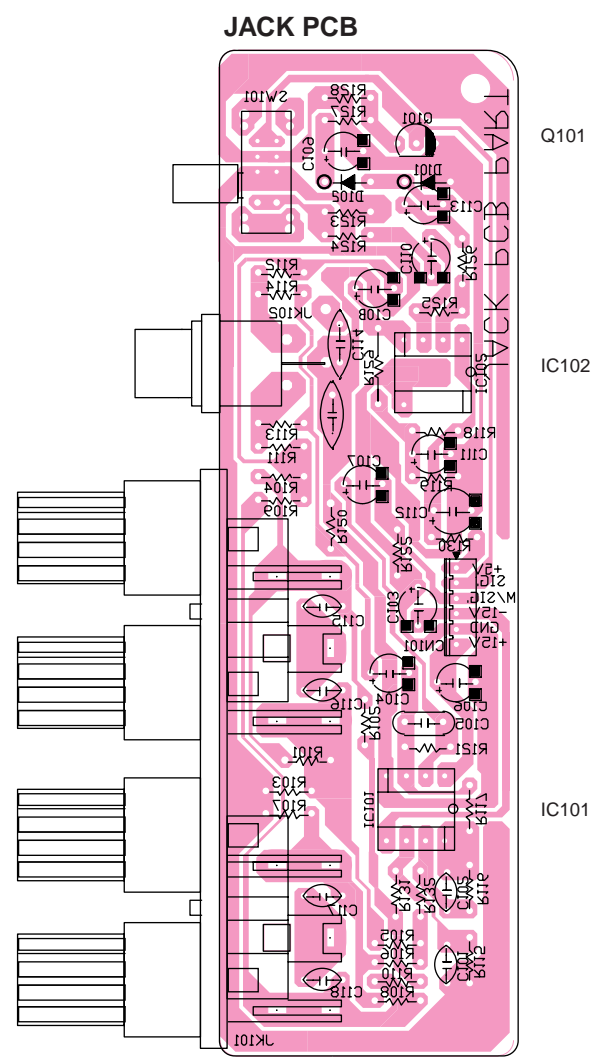
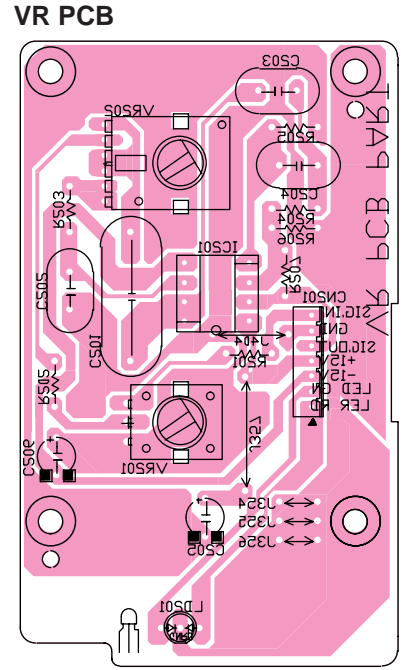
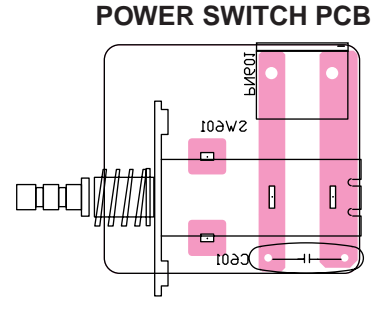
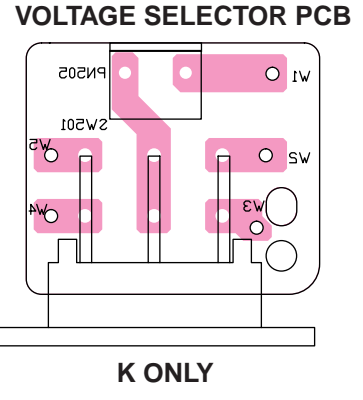
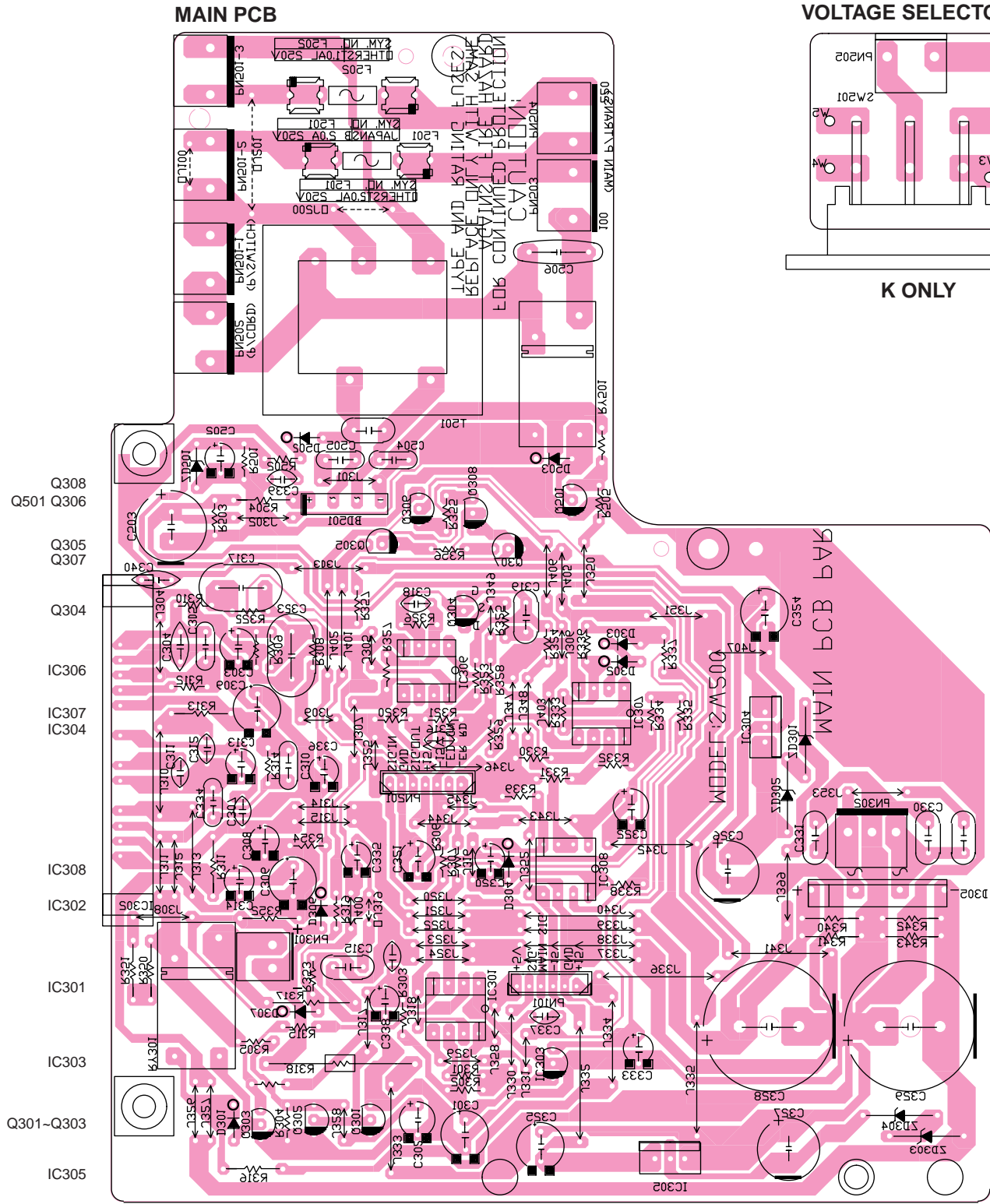


JACK PCB

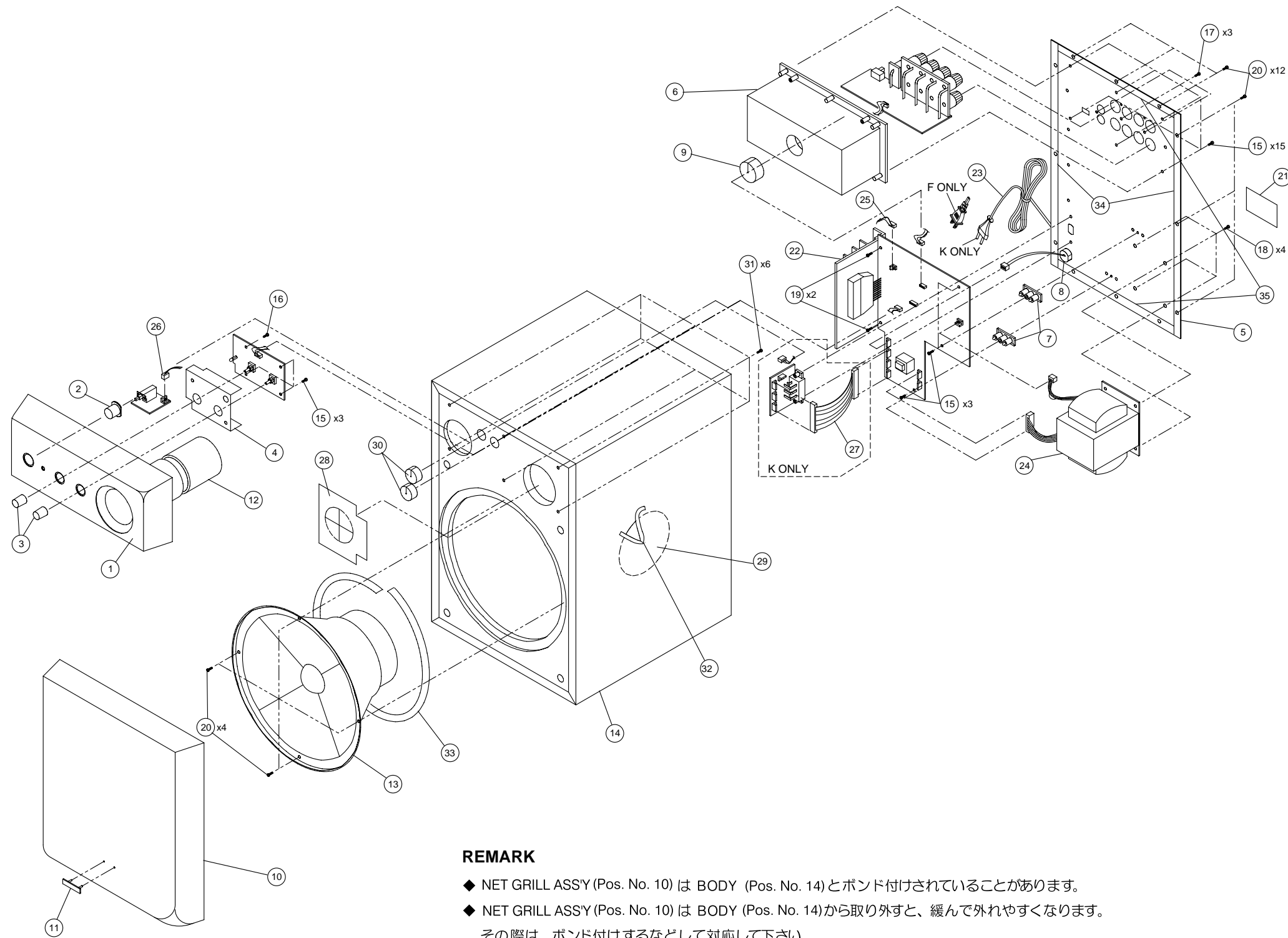


- Q308
- Q501 Q306
- Q305
- Q307
- Q304
- IC306
- IC307
- IC304
- IC308
- IC302
- IC301
- IC303
- Q301-Q303
- IC305

(SOLDER SIDE)



5. EXPLODED VIEW AND PARTS LIST



REMARK

- ◆ NET GRILL ASS'Y (Pos. No. 10) は BODY (Pos. No. 14) とボンド付けされていることがあります。
- ◆ NET GRILL ASS'Y (Pos. No. 10) は BODY (Pos. No. 14) から取り外すと、緩んで外れやすくなります。その際は、ボンド付けするなどして対応して下さい。
- ◆ WOOFER UNIT (Pos. No. 13) は BODY (Pos. No. 14) から取り外すと、SCREW (Pos. No. 20) が緩んで外れやすくなります。その際は、ボンド付けするなどして対応して下さい。

REMARK

- NET GRILL ASS'Y (Pos. No. 10) and BODY (Pos. No. 14) can be fixed by bond.
- If NET GRILL ASS'Y (Pos. No. 10) removes from BODY (Pos. No. 14), it will be loose and will become easy to separate. In that case, please fix by bond or etc. and correspond.
- If WOOFER UNIT (Pos. No. 13) removes from BODY (Pos. No. 14), SCREW (Pos. No. 20) will be loose and will not be affective. In that case, please fix by bond or etc. and correspond.

| POS. NO | VERS. COLOR | DESCRIPTION | PART NO. (MJI) |
|---------|-------------|-----------------------------------|----------------|
| 1 | | 3720V-0008A FRONT PANEL | 317W248010 |
| 2 | | 4940V-0008A BUTTON POWER | 317W270010 |
| 3 | | 4940V-0009A KNOB VOLUME/HIGH CUT | 317W154010 |
| 4 | | 3300V-0001A SHIELD | nsp |
| 5 | /F | 3720V-0009A REAR PANEL | nsp |
| 5 | /K | 3720V-0009B REAR PANEL | nsp |
| 6 | | 3550V-0002A COVER JACK PCB | nsp |
| 7 | | 4930V-0007A HOLDER PCB | nsp |
| 8 | | 4930V-0006A CORD BUSHING | 317W259010 |
| 9 | | 4850V-0001F CUSHION | nsp |
| 10 | | SGC-223-01 NET GRILL ASSY | 317W401500 |
| 11 | | SPB-000-03 BADGE MARANTZ.AU(GOLD) | 354H251230 |
| 12 | | SUE-551-04 DUCT | nsp |
| 13 | | SXB-200-59 WOOFER UNIT | QK0205901R |
| 14 | | HAB-232-05 BODY | nsp |
| 15 | | 4000V-0001F SCREW | nsp |
| 16 | | 4000V-0007A SCREW | nsp |
| 17 | | 4000V-0001K SCREW | nsp |
| 18 | | 4000V-0002A SCREW | nsp |
| 19 | | 4000V-0001D SCREW(BIND HEAD) | nsp |
| 20 | | SFG-000-05 SCREW WOOD | nsp |
| 21 | | SRB-002-02 LABEL SERIAL NO. | nsp |
| 22 | | 4920V-E007A HEATSINK MAIN | nsp |
| 23 | /K | 6410V-E1W0A POWER CORD | *ZC000120R |
| 23 | /F | 6410V-J0W0A POWER CORD | *ZC000130R |
| ▲24 | /K | 6170V-Z66WK POWER TRANSFORMER | *TS001390R |
| ▲24 | /F | 6170V-J66WK POWER TRANSFORMER | *TS001400R |
| 25 | | 6630V-WT BCT SPEAKER CONNECTOR 2P | nsp |
| 26 | | 6630V-WW BDT CONNECTOR 2P | nsp |
| 27 | | 6630V-WW CKD CONNECTOR 5P | nsp |
| 28 | | SGG-881-01 GASKET PORT | nsp |
| 29 | | SGG-270-01 GASKET EVA | nsp |
| 30 | | SGG-050-01 GASKET CORD | nsp |
| 31 | | SFG-000-20 SCREW | nsp |
| 32 | | YMG-500 COLOR TIE 100mm | nsp |
| 33 | | SGG-187-03 WOOFER GASKET | nsp |
| 34 | | 4850V-0001D CUSHION | nsp |
| 35 | | 4850V-0001E CUSHION | nsp |
| 001T | /F | PACKING | |
| 001T | /K | USER GUIDE JAPANESE | 317W851110 |
| | | USER GUIDE | 317W851350 |
| | | ENGLISH/CHINESE | |
| 001S | | NOT STANDARD SPARE PARTS | |
| 002S | | PACKING CASE | 317W801010 |
| | | CUSHION | 317W809010 |

NOTE : "nsp" PART IS LISTED FOR REFERENCE ONLY, MARANTZ WILL NOT SUPPLY THESE PARTS.

6. ELECTRICAL PARTS LIST

ASSIGNMENT OF COMMON PARTS CODES. RESISTORS

R*** : 1) GD05 x x x 140, Carbon film fixed resistor, ±5% 1/4W
 R*** : 2) GD05 x x x 160, Carbon film fixed resistor, ±5% 1/6W
 ① Resistance value

Examples
 ① Resistance value
 0.1Ω 001 10Ω 100 1kΩ 102 100kΩ 104
 0.5Ω 005 18Ω 180 2.7kΩ 272 680kΩ 684
 1Ω 010 100Ω 101 10kΩ 103 1MΩ 105
 6.8Ω 068 390Ω 391 22kΩ 223 4.7MΩ 475
Note : Please distinguish 1/4W from 1/6W by the shape of parts used actually.

CAPACITORS

C*** : CERAMIC CAP.
 3) DD1 x x x 370, Ceramic capacitor
 Disc type
 Temp.coeff. P350-N1000, 50V
 ③ Capacity value
 ② Tolerance

Examples
 ② Tolerance (Capacity deviation)
 ±0.25 pF 0
 ±0.5 pF 1
 ±5 % 5
 Tolerance of COMMON PARTS handled here are as follows :
 0.5 pF - 5 pF ± 0.25 pF
 6 pF - 10 pF ± 0.5 pF
 12 pF - 560 pF ± 5 %
 ③ Capacity value
 0.5 pF 005 3 pF 030 100 pF 101
 1 pF 010 10 pF 100 220 pF 221
 1.5 pF 015 47 pF 470 560 pF 561

C*** : CERAMIC CAP.
 4) DK16 x x x 300, High dielectric constant ceramic capacitor
 Disc type
 Temp.chara. 2B4, 50V
 ④ Capacity value

Examples
 ④ Capacity value
 100 pF 101 1000 pF 102 10000 pF 103
 470 pF 471 2200 pF 222

C*** : 5) ELECTROLY CAP. (), 6) FILM CAP. ()
 5) EA x x x x x 10, Electrolytic capacitor
 One-way lead type, Tolerance ±20%
 ⑥ Working voltage
 ⑤ Capacity value

Examples
 ⑤ Capacity value
 0.1 μF 104 4.7 μF 475 100 μF 107
 0.33 μF 334 10 μF 106 330 μF 337
 1 μF 105 22 μF 226 1100 μF 118
 2200 μF 228
 ⑥ Working voltage
 6.3 V 006 25 V 025
 10 V 010 35 V 035
 16 V 016 50 V 050

6) DF15 x x x 350 Plastic film capacitor
 DF15 x x x 310 One-way type, Mylar ±5% 50V
 DF16 x x x 310 Plastic film capacitor
 One-way type, Mylar ±10% 50V
 ⑦ Capacity value

Examples
 ⑦ Capacity value
 0.001 μF (1000 pF) 102 0.1 μF 104
 0.0018 μF 182 0.56 μF 564
 0.01 μF 103 1 μF 105
 0.015 μF 153

NOTE 1) The above CODES(R***, R***, C***, C*** and C***) are omitted on the schematic diagram in some case.
 2) On the occasion, be confirmed the common parts on the parts list.
 3) Refer to "Common Parts List" for the other common parts(R105, DD4, DK4).

NOTE ON SAFETY FOR FUSIBLE RESISTOR :

The suppliers and their type numbers of fusible resistors are as follows ;

1. KOA Corporation
 Part No.(MJI) Type No.(KOA) Description
 NH05 x x x 140 RF25S x x x Ω J ±5% (1/4W)
 NH05 x x x 120 RF50S x x x Ω J ±5% (1/2W)
 NH85 x x x 110 RF73B2A x x x Ω J ±5% (1/10W)
 NH95 x x x 140 RF73B2E x x x Ω J ±5% (1/4W)
 * Resistance value Resistance value(0.1Ω - 10k Ω)

2. Matsushita Electronic Components Co., Ltd
 Part No.(MJI) Type No.(MEC) Description
 NF05 x x x 140 ERD-2FCJ x x x (±5% 1/4W)
 RF05 x x x 140 ERD-2FCG x x x (±2% 1/4W)
 NF02 x x x 140 ERD-2FCG x x x (±2% 1/4W)
 RF02 x x x 140 ERD-2FCG x x x (±2% 1/4W)
 * Resistance value

Examples
 * Resistance value
 0.1Ω 001 10Ω 100 1kΩ 102 100kΩ 104
 0.5Ω 005 18Ω 180 2.7kΩ 272 680kΩ 684
 1Ω 010 100Ω 101 10kΩ 103 1MΩ 105
 6.8Ω 068 390Ω 391 22kΩ 223 4.7MΩ 475

| ABBREVIATION AND MARKS | | | |
|------------------------|------------------|---------|---------------|
| ANT. | : ANTENNA | BATT. | : BATTERY |
| CAP. | : CAPACITOR | CER. | : CERAMIC |
| CONN. | : CONNECTING | DIG. | : DIGITAL |
| HP | : HEADPHONE | MIC. | : MICROPHONE |
| μ-PRO | : MICROPROCESSOR | REC. | : RECORDING |
| RES. | : RESISTOR | SPK | : SPEAKER |
| SW | : SWITCH | TRANSF. | : TRANSFORMER |
| TRIM. | : TRIMMING | TRS. | : TRANSISTOR |
| VAR. | : VARIABLE | X' TAL | : CRYSTAL |

NOTE ON SAFETY:

Symbol ▲ Fire or electrical shock hazard. Only original parts should be used to replaced any part marked with symbol ▲ Any other component substitution (other than original type), may increase risk of fire or electrical shock hazard.

安全上の注意 :

▲ がついている部品は、安全上重要な部品です。必ず指定されている部品番号の部品を使用して下さい。

| POS. NO | VERS. COLOR | DESCRIPTION | PART NO. (MJI) | POS. NO | VERS. COLOR | DESCRIPTION | PART NO. (MJI) |
|--------------------------------------|-------------|---|----------------|-----------------------|-------------|---------------------------------|----------------|
| MAIN CIRCUIT BOARD CAPACITORS | | | | | | | |
| C301 | | 0CE2276F605 ELECT 220/16,TP | nsp | R320 | | 0RD6801F409 6.8K,1/6W,5%,TP52 | nsp |
| C302 | | 0CE4766K605 ELECT 47/50,TP | nsp | R321 | | 0RD6801F409 6.8K,1/6W,5%,TP52 | nsp |
| C303 | | 0CE1076F605 ELECT 100/16,TP | nsp | R322 | | 0RD1003F409 100K,1/6W,5%,TP52 | nsp |
| C304 | | 0CK2220K405 CER. 222,TP | nsp | R323 | | 0RD1004F409 1M,1/6W,5%,TP52 | nsp |
| C305 | | 0CQ1031N405 MYLAR 103,TP | nsp | R324 | | 0RD1003F409 100K,1/6W,5%,TP52 | nsp |
| C306 | | 0CE1076K605 ELECT 100/50,TP | nsp | R325 | | 0RD1503F409 150K,1/6W,5%,TP52 | nsp |
| C307 | | 0CC1010K415 CER. 100P,TP | nsp | R326 | | 0RD5602F409 56K,1/6W,5%,TP52 | nsp |
| C308 | | 0CE1066K605 ELECT 10/50,TP | nsp | R327 | | 0RD9101F409 9.1K,1/6W,5%,TP52 | nsp |
| C309 | | 0CE1076K605 ELECT 100/50,TP | nsp | R328 | | 0RD1002F409 10K,1/6W,5%,TP52 | nsp |
| C310 | | 0CQ3921N405 MYLAR 392,TP | nsp | R329 | | 0RD3901F409 3.9K,1/6W,5%,TP52 | nsp |
| C311 | | 0CK1020K405 CER. 102,TP | nsp | R330 | | 0RD6801F409 6.8K,1/6W,5%,TP52 | nsp |
| C312 | | 0CC1010K415 CER. 100P,TP | nsp | R331 | | 0RD1001F409 1K,1/6W,5%,TP52 | nsp |
| C313 | | 0CE1056K605 ELECT 1/50,TP | nsp | R332 | | 0RD1002F409 10K,1/6W,5%,TP52 | nsp |
| C314 | | 0CE1066K605 ELECT 10/50,TP | nsp | R333 | | 0RD8201F409 8.2K,1/6W,5%,TP52 | nsp |
| C315 | | 0CQ1041N405 MYLAR 104,TP | nsp | R334 | | 0RD8201F409 8.2K,1/6W,5%,TP52 | nsp |
| C316 | | 0CC2210K405 CER. 220P | nsp | R335 | | 0RD8201F409 8.2K,1/6W,5%,TP52 | nsp |
| C317 | | 0CQ4741N401 MYLAR 474 | nsp | R336 | | 0RD8201F409 8.2K,1/6W,5%,TP52 | nsp |
| C318 | | 0CC1010K415 CER. 100P,TP | nsp | R337 | | 0RD8201F409 8.2K,1/6W,5%,TP52 | nsp |
| C319 | | 0CQ1041N405 MYLAR 104,TP | nsp | R338 | | 0RD2202F409 22K,1/6W,5%,TP52 | nsp |
| C320 | | 0CE1066K605 ELECT 10/50,TP | nsp | R339 | | 0RD2203F409 220K,1/6W,5%,TP52 | nsp |
| C321 | | 0CE1076F605 ELECT 100/16,TP | nsp | R340 | | 0RD1802G409 18K,1/4W,5%,TP52 | nsp |
| C322 | | 0CE1076F605 ELECT 100/16,TP | nsp | R341 | | 0RD1802G409 18K,1/4W,5%,TP52 | nsp |
| C323 | | 0CQ4741N401 MYLAR 474 | nsp | R342 | | 0RD1802G409 18K,1/4W,5%,TP52 | nsp |
| C324 | | 0CE2276F605 ELECT 220/16,TP | EA22701610 | R343 | | 0RD1802G409 18K,1/4W,5%,TP52 | nsp |
| C325 | | 0CE2276F605 ELECT 220/16,TP | EA22701610 | R350 | | 0RD1001G409 1K,1/4W,5%,TP52 | nsp |
| C326 | | 0CE1066K605 ELECT 10/50,TP | EA10605010 | R351 | | 0RD1001G409 1K,1/4W,5%,TP52 | nsp |
| C327 | | 0CE1066K605 ELECT 10/50,TP | EA10605010 | R352 | | 0RD0682G409 68,1/4W,5%,TP52 | nsp |
| C328 | | 0CE4787K610 ELECT 4700/50 | *EA001060R | R353 | | 0RD1003F409 100K,1/6W,5%,TP52 | nsp |
| C329 | | 0CE4787K610 ELECT 4700/50 | *EA001060R | R354 | | 0RD1003F409 100K,1/6W,5%,TP52 | nsp |
| C330 | | 0CQ4731N405 MYLAR 473,TP | nsp | R355 | | 0RD4700F409 470,1/6W,5%,TP52 | nsp |
| C331 | | 0CQ4731N405 MYLAR 473,TP | nsp | R356 | | 0RD4700F409 470,1/6W,5%,TP52 | nsp |
| C333 | | 0CE1066K605 ELECT 10/50,TP | nsp | R357 | | 0RD0102F409 10,1/6W,5%,TP52 | nsp |
| C334 | | 0CQ1031N405 MYLAR 103,TP | nsp | R501 | | 0RD1002F409 10K,1/6W,5%,TP52 | nsp |
| C335 | | 0CE4766F605 ELECT 47/16,TP | nsp | R502 | | 0RD4701F409 4.7K,1/6W,5%,TP52 | nsp |
| C336 | | 0CE4766F605 ELECT 47/16,TP | nsp | R503 | | 0RD3301F409 3.3K,1/6W,5%,TP52 | nsp |
| C337 | | 0CK1040K405 CER. 104,TP | nsp | R504 | | 0RD0221G409 2.2,1/4W,5%,TP52 | nsp |
| C338 | | 0CE1056K605 ELECT 1/50,TP | nsp | R505 | | 0RD1002F409 10K,1/6W,5%,TP52 | nsp |
| C339 | | 0CK1040K405 CER. 104,TP | nsp | RY301 | | 6920V-DG1A1 RELAY DG12D1(12VDC) | LY10120350 |
| C340 | | 0CK4730K405 CER. 473,TP | nsp | ▲RY501 | | 6920V-DG1A1 RELAY DG12D1(12VDC) | LY10120350 |
| C502 | | 0CE1066K605 ELECT 10/50,TP | nsp | SEMICONDUCTORS | | | |
| C503 | | 0CE1086H605 ELECT 1000/25 | nsp | D301 | | 0DD4148B052 DIODE 1N4148 | nsp |
| C504 | | 0CQ1031N405 MYLAR 103,TP | nsp | D304 | | | |
| C505 | | 0CQ1031N405 MYLAR 103,TP | nsp | ▲D305 | | 0DD404GE108 DIODE PBS404GU | *HE200270R |
| ▲C506 | | 0DC4721R6A1 CER. 472/250V | *DK100690R | D306 | | 0DD4148B052 DIODE 1N4148 | nsp |
| | | | | D307 | | 0DD4148B052 DIODE 1N4148 | nsp |
| | | | | ▲BD501 | | 0DDM06GD114 DIODE KBPM06G | *HE200280R |
| R301 | | 0RD1002F409 10K,1/6W,5%,TP52 | nsp | D502 | | 0DD4148B052 DIODE 1N4148 | nsp |
| R302 | | 0RD1002F409 10K,1/6W,5%,TP52 | nsp | D503 | | 0DD4148B052 DIODE 1N4148 | nsp |
| R303 | | 0RD1002F409 10K,1/6W,5%,TP52 | nsp | IC301 | | 0IM508ADIP IC PIC12C508A-04/P | *HC107000R |
| R304 | | 0RD1003F409 100K,1/6W,5%,TP52 | nsp | IC302 | | 0ISA4036TFH IC STK4036 | HC10173030 |
| R305 | | 0RD6802F409 68K,1/6W,5%,TP52 | nsp | IC303 | | 0IKE78S05TP IC KIA78S05P | HC38105090 |
| R306 | | 0RD4700F409 470,1/6W,5%,TP52 | nsp | IC304 | | 0IKE7815SIP IC KIA7815 | HC3891509F |
| R307 | | 0RD4700F409 470,1/6W,5%,TP52 | nsp | IC305 | | 0IKE7915SIP IC KIA7915 | HC3991509F |
| R308 | | 0RD1001F409 1K,1/6W,5%,TP52 | nsp | IC306 | | 0IKE4558DIP IC KIA4558 | HC10008090 |
| R309 | | 0RD3301F409 3.3K,1/6W,5%,TP52 | nsp | IC307 | | 0IKE4558DIP IC KIA4558 | HC10008090 |
| R310 | | 0RD1000F409 100,1/6W,5%,TP52 | nsp | IC308 | | 0IKE4558DIP IC KIA4558 | HC10008090 |
| R311 | | 0RD1000G409 100,1/4W,5%,TP52 | nsp | Q301 | | 0TR3198AHNP TRS. 2SC3198 | nsp |
| R312 | | 0RD1002F409 10K,1/6W,5%,TP52 | nsp | Q302 | | 0TR3198AHNP TRS. 2SC3198 | nsp |
| R313 | | 0RD1000G409 100,1/4W,5%,TP52 | nsp | Q303 | | 0TR3198AHNP TRS. 2SC3198 | nsp |
| R314 | | 0RD1003F409 100K,1/6W,5%,TP52 | nsp | Q304 | | 0TF315FBLNC FET,2SK315F | *HF200270R |
| R315 | | 0RD1002F409 10K,1/6W,5%,TP52 | nsp | Q305 | | 0TR1266AFP TRS. 2SA1266Y | nsp |
| R316 | | 0RD0682G409 68,1/4W,5%,TP52 | nsp | Q306 | | 0TR3198AHNP TRS. 2SC3198 | nsp |
| R317 | | 0RN0471J410 4.7(1W) | GA05047010 | Q307 | | 0TR1266AFP TRS. 2SA1266Y | nsp |
| R318 | | 0RC0100M425 CEMENT 0.1(5W), FORMING(25mm) | *G0000009R | Q308 | | 0TR3198AHNP TRS. 2SC3198 | nsp |
| R319 | | 0RD9101F409 9.1K,1/6W,5%,TP52 | nsp | | | | |

NOTE : "nsp" PART IS LISTED FOR REFERENCE ONLY, MARANTZ WILL NOT SUPPLY THESE PARTS.

| POS. NO | VERS. COLOR | DESCRIPTION | PART NO. (MJI) | POS. NO | VERS. COLOR | DESCRIPTION | PART NO. (MJI) |
|---------|-------------|--|----------------|---------|-------------|---|----------------|
| Q501 | | 0TR3198AHNP TRS. 2SC3198 | nsp | R118 | | ORD4702F409 47K,1/6W,5%,TP52 | nsp |
| ▲ F501 | | MISCELLANEOUS | | R119 | | ORD4702F409 47K,1/6W,5%,TP52 | nsp |
| ▲ F502 | /K | 0FT2000T503 FUSE 5*20,50T 2.0A/250V VDE | FS10200800 | R120 | | ORD4703F409 470K,1/6W,5%,TP52 | nsp |
| ▲ PM502 | | 0FT1000T503 FUSE 5*20,50T 1.0A/250V VDE | FS10100950 | R121 | | ORD4702F409 47K,1/6W,5%,TP52 | nsp |
| PM504 | /K | 6602V-D02ST WAFER 2P,P=7.92,HANLIM, LWP1143-02 | nsp | R122 | | ORD1003F409 100K,1/6W,5%,TP52 | nsp |
| PN101 | | 6602V-A06ST WAFER 6P,P=2.0,53014-06 | nsp | R123 | | ORD4700F409 470,1/6W,5%,TP52 | nsp |
| PN201 | | 6602V-A07ST WAFER 7P,P=2.0,53014-07 | nsp | R124 | | ORD1000F409 100,1/6W,5%,TP52 | nsp |
| PN301 | | 6602V-C02ST WAFER 2P,P=3.96,HANLIM LW1143-02 | nsp | R125 | | ORD5602F409 56K,1/6W,5%,TP52 | nsp |
| PN302 | | 6602V-C03ST WAFER 3P,P=3.96,HANLIM LW1143-03 | nsp | R126 | | ORD3301F409 3.3K,1/6W,5%,TP52 | nsp |
| PN501-1 | | 6602V-D02ST WAFER 2P,P=7.92,HANLIM LWP1143-02 | nsp | R127 | | ORD1001F409 1K,1/6W,5%,TP52 | nsp |
| PN503 | | 6602V-D02ST WAFER 2P,P=7.92,HANLIM LWP1143-02 | nsp | R128 | | ORD4702F409 47K,1/6W,5%,TP52 | nsp |
| ▲ T501 | /F | 6170V-J35IK POWER TRS. ANS FORMER SUB 35*14 | *TS001450R | R129 | | ORD1003G409 100K,1/4W,5%,TP52 | nsp |
| ▲ T501 | /K | 6170V-Z35IK POWER TRS. ANS FORMER SUB 35*15 AC115/230V | *TS001460R | R130 | | ORD0472F409 47,1/6W,5%,TP52 | nsp |
| ZD301 | | 0DZ6210JA09 ZENER DIODE 6.2V,1W,1N4735 | *HD301960R | R131 | | ORD1001F409 1K,1/6W,5%,TP52 | nsp |
| ZD304 | | 0DZ5110HA09 ZENER DIODE 5.1V | HD30511000 | R132 | | ORD1001F409 1K,1/6W,5%,TP52 | nsp |
| ZD501 | | JACK CIRCUIT BOARD CAPACITORS | | | | SEMICONDUCTORS | |
| C101 | | 0CC2210K405 CER. 220P,TP | nsp | D101 | | ODD4148B052 DIODE 1N4148 | nsp |
| C102 | | 0CC2210K405 CER. 220P,TP | nsp | D102 | | ODD4148B052 DIODE 1N4148 | nsp |
| C103 | | 0CE1066H605 ELECT 10/25,TP | nsp | IC101 | | 0IKE4558DIP IC KIA4558 | HC10008090 |
| C104 | | 0CE1066K605 ELECT 10/50,TP | nsp | IC102 | | 0IKE4558DIP IC KIA4558 | HC10008090 |
| C105 | | 0CQ2231N405 MYLAR 103,TP | nsp | Q101 | | 0TR3198AHNP TRS. C3198 | nsp |
| C106 | | 0CE1066H605 ELECT 10/25,TP | nsp | CN101 | | 6630V-WPFAJ CONNECTOR ASSY 6p | nsp |
| C107 | | 0CE4766F605 ELECT 47/16,TP | nsp | JK101 | | 6800V-SRR08 JACK JW-6018B | YT01080120 |
| C108 | | 0CE1066K605 ELECT 10/50,TP | nsp | JK102 | | 6612V-RWR02 JACK RCA-2P WH/RD JW-1609DR(4PIN) | *YT002420R |
| C109 | | 0CE1076D605 ELECT 100/10,TP | nsp | SW101 | | 6600V-S2C3P SWITCH AUTO-STANDBY CSS-2307A | *SS000670R |
| C110 | | 0CE1066K605 ELECT 10/50,TP | nsp | | | VR CIRCUIT BOARD CAPACITORS | |
| C111 | | 0CE1066K605 ELECT 10/50,TP | nsp | C201 | | 0CM6841N403 MYLAR ME 684,100V | nsp |
| C112 | | 0CE4766F605 ELECT 47/16,TP | nsp | C202 | | 0CQ1841N401 MYLAR 184,TP | nsp |
| C113 | | 0CE1066K605 ELECT 10/50,TP | nsp | C203 | | 0CQ1541N401 MYLAR 154,TP | nsp |
| C114 | | 0CK4730K405 CER. 0.047(C),TP | nsp | C204 | | 0CQ1541N401 MYLAR 154,TP | nsp |
| C115 | | 0CK1030K405 CER. 0.01(C),TP | nsp | C205 | | 0CE1066K605 ELECT 10/50,TP | nsp |
| C116 | | 0CK1030K405 CER. 0.01(C),TP | nsp | C206 | | 0CE1066K605 ELECT 10/50,TP | nsp |
| C117 | | 0CK1030K405 CER. 0.01(C),TP | nsp | | | RESISTORS | |
| C118 | | 0CK1030K405 CER. 0.01(C),TP | nsp | R201 | | ORD1000F409 100,1/6W,5%,TP52 | nsp |
| R101 | | ORD3901F409 3.9K,1/6W,5%,TP52 | nsp | R202 | | ORD3301F409 3.3K,1/6W,5%,TP52 | nsp |
| R102 | | ORD1003F409 100K,1/6W,5%,TP52 | nsp | R203 | | ORD3301F409 3.3K,1/6W,5%,TP52 | nsp |
| R103 | | ORD2201F409 2.2K,1/6W,5%,TP52 | nsp | R204 | | ORD1802F409 18K,1/6W,5%,TP52 | nsp |
| R104 | | ORD1004F409 2.7M,1/6W,5%,TP52 | nsp | R205 | | ORD5602F409 56K,1/6W,5%,TP52 | nsp |
| R105 | | ORD1003F409 100K,1/6W,5%,TP52 | nsp | | | SEMICONDUCTORS | |
| R106 | | ORD1003F409 100K,1/6W,5%,TP52 | nsp | IC201 | | 0IKE4558DIP IC KIA4558 | HC10008090 |
| R107 | | ORD2201F409 2.2K,1/6W,5%,TP52 | nsp | LED201 | | 0DL3R25S04D LED SAM3270 DUAL COLOR | H110096300 |
| R108 | | ORD3901F409 3.9K,1/6W,5%,TP52 | nsp | LED201H | | 4930V-0008A HOLDER LED SW-200,H=11mm | nsp |
| R109 | | ORD1004F409 2.7M,1/6W,5%,TP52 | nsp | CN201 | | 6630V-SLGAS CONNECTOR ASSY 7P | nsp |
| R110 | | ORD1003F409 100K,1/6W,5%,TP52 | nsp | VR201 | | 6610V-AS530 VR ROTARY A5KOHM | *RB000010R |
| R111 | | ORD1003F409 100K,1/6W,5%,TP52 | nsp | VR202 | | 6610V-DD140 VR ROTARY C10KOHMx2 | *RM000430R |
| R112 | | ORD1003F409 100K,1/6W,5%,TP52 | nsp | | | | |
| R113 | | ORD1202F409 12K,1/6W,5%,TP52 | nsp | | | | |
| R114 | | ORD1202F409 12K,1/6W,5%,TP52 | nsp | | | | |
| R115 | | ORD3301F409 3.3K,1/6W,5%,TP52 | nsp | | | | |
| R116 | | ORD3301F409 3.3K,1/6W,5%,TP52 | nsp | | | | |
| R117 | | ORD4701F409 4.7K,1/6W,5%,TP52 | nsp | | | | |

NOTE : "nsp" PART IS LISTED FOR REFERENCE ONLY, MARANTZ WILL NOT SUPPLY THESE PARTS.

| POS. NO | VERS. COLOR | DESCRIPTION | PART NO. (MJ) |
|---------|-------------|---|---------------|
| ▲ C601 | | POWER SWITCH CIRCUIT BOARD 0DC4721R6A1 CER.CAP 472/250V | *DK100690R |
| PN601 | | 6602V-D02ST WAFER 2P,P=7.92 | nsp |
| ▲ SW601 | | 6600V-A2WHS SWITCH POWER TV-3, CLASS I, UL/CSA/BSI/VDE | SP01010650 |
| | | VOLTAGE SELECTOR CIRCUIT BOARD | |
| PN701-1 | | 6602V-D02ST WAFER 2P,P=7.92,HANLIM LWP1143-02 | nsp |
| PN701-2 | | 6602V-D02ST WAFER 2P,P=7.92,HANLIM LWP1143-02 | nsp |
| PN701-3 | | 6602V-D02ST WAFER 2P,P=7.92,HANLIM LWP1143-02 | nsp |
| PN702 | | 6602V-D02AN WAFER 2P,P=7.92 HANLIM,LAP1143-02 | nsp |
| SW701 | | 6600V-V6LSS SWITCH,VOLTAGE SEL SDKGA43001,5A/250V | *SS000680R |

NOTE : "nsp" PART IS LISTED FOR REFERENCE ONLY, MARANTZ WILL NOT SUPPLY THESE PARTS.