



# SERVICE MANUAL

# 1130

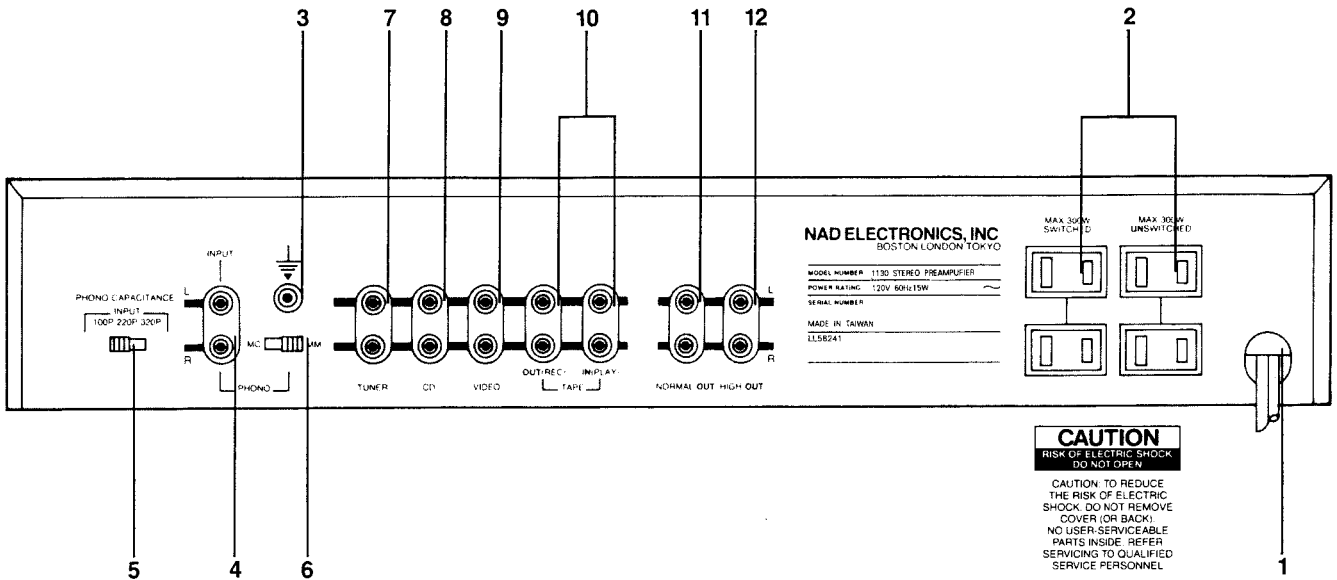
STEREO PREAMPLIFIER

## CONTENTS

REAR PANEL CONNECTIONS .....	PAGE 3
SPECIFICATIONS, (NAD 1130 STEREO PREAMPLIFIER) .....	PAGE 4
MAIN PCB COMPONENT LOCATION .....	PAGE 5, 6
PCB LAYOUT AND WIRING DIAGRAM .....	PAGE 7, 8
SCHEMATIC DIAGRAM.....	PAGE 9, 10
1130 PARTS LIST.....	PAGE 11-13
EXPLODED VIEW .....	PAGE 14
PACKING DIAGRAM .....	PAGE 15

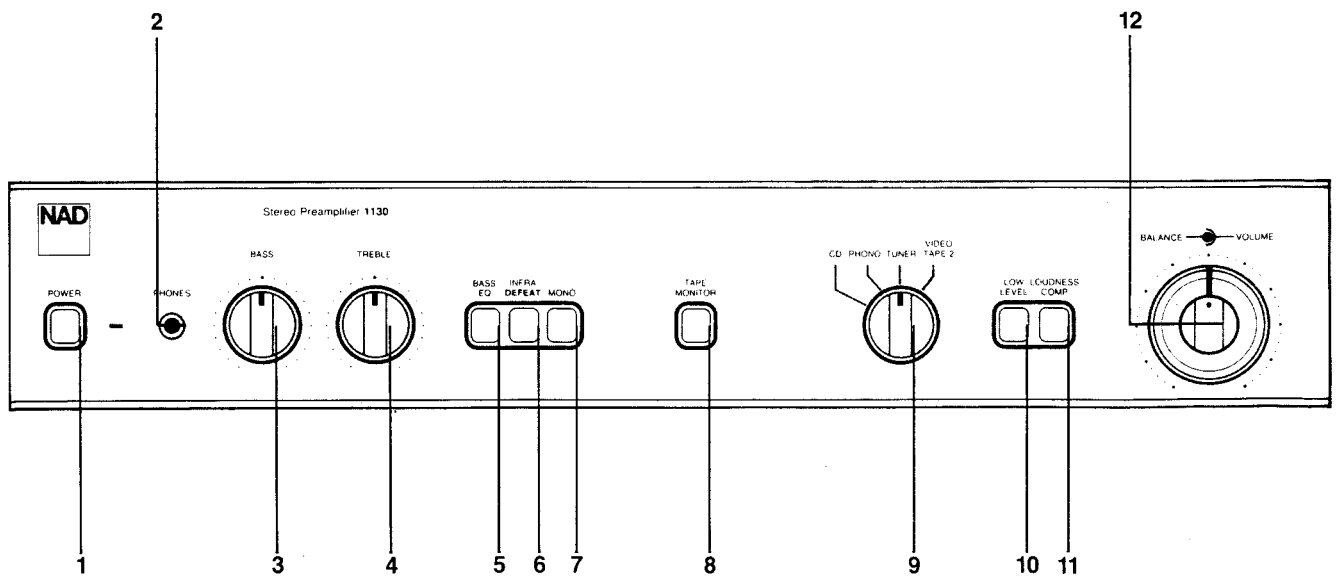
**REAR PANEL**

- |                            |                                |
|----------------------------|--------------------------------|
| 1. AC Line Cord.           | 7. Tuner Input.                |
| 2. AC Convenience Outlets. | 8. CD Input.                   |
| 3. Phono Ground.           | 9. Video Input.                |
| 4. Phono Input.            | 10. Tape Rec/Play.             |
| 5. Capacitance Selector.   | 11. Preamp Output (Normal)     |
| 6. MM/MC Selector.         | 12. Preamp Output (High Level) |



**FRONT PANEL**

- |                              |                            |
|------------------------------|----------------------------|
| 1. Power.                    | 7. Mono.                   |
| 2. Phones.                   | 8. Tape Monitor.           |
| 3. Bass.                     | 9. Input Selector.         |
| 4. Treble.                   | 10. Low Level.             |
| 5. Bass EQ.                  | 11. Loudness Compensation. |
| 6. Infrasonic Filter Defeat. | 12. Volume/Balance.        |



## SPECIFICATIONS, NAD 1130 STEREO PREAMPLIFIER

### Input Sensitivity (1KHz)

MC	0.1mV
MM	1.5mV
High-Level	90mV

Rated output Voltage 20-20KHz	8V
Rated Distortion 20–20KHz	0.02%

### Max output Voltage (at clipping point)

50K ohm load	8V
600 ohm load	2.5V

### Signal to noise ratio

MC	Flat (INFRASONIC DEFEAT OFF)	59dB
	A-weighted	75dB
MM	Flat (INFRASONIC DEFEAT OFF)	75dB
	A-weighted	85dB
High-Level	Flat (INFRASONIC DEFEAT ON)	80dB
	A-weighted	90dB

RIAA PHONO	±0.5dB
------------	--------

Frequency Response 20–20KHz	±0.5dB
-----------------------------	--------

### Tone control

Treble	(10KHz)	±7dB
Bass	(50Hz)	±9.5dB
Loudness	(10KHz)	+3dB/±0.5dB
Loudness	(50Hz)	+6dB/±1dB

### Bass Equalization

(at 70Hz)	+2dB
(at 40 Hz)	+5dB

Audio Muting (Low Level)	–20dB±1dB
--------------------------	-----------

Infrasonic filter	–3dB at 9Hz, 12dB/octave
-------------------	--------------------------

### Max output Voltage (at clipping point)

50K ohm Load	13V
--------------	-----

600 ohm Load	9V
--------------	----

8 ohm Load	300mV
------------	-------

Net Weight	4.25 Kg/9 lb, 6 oz.
------------	---------------------

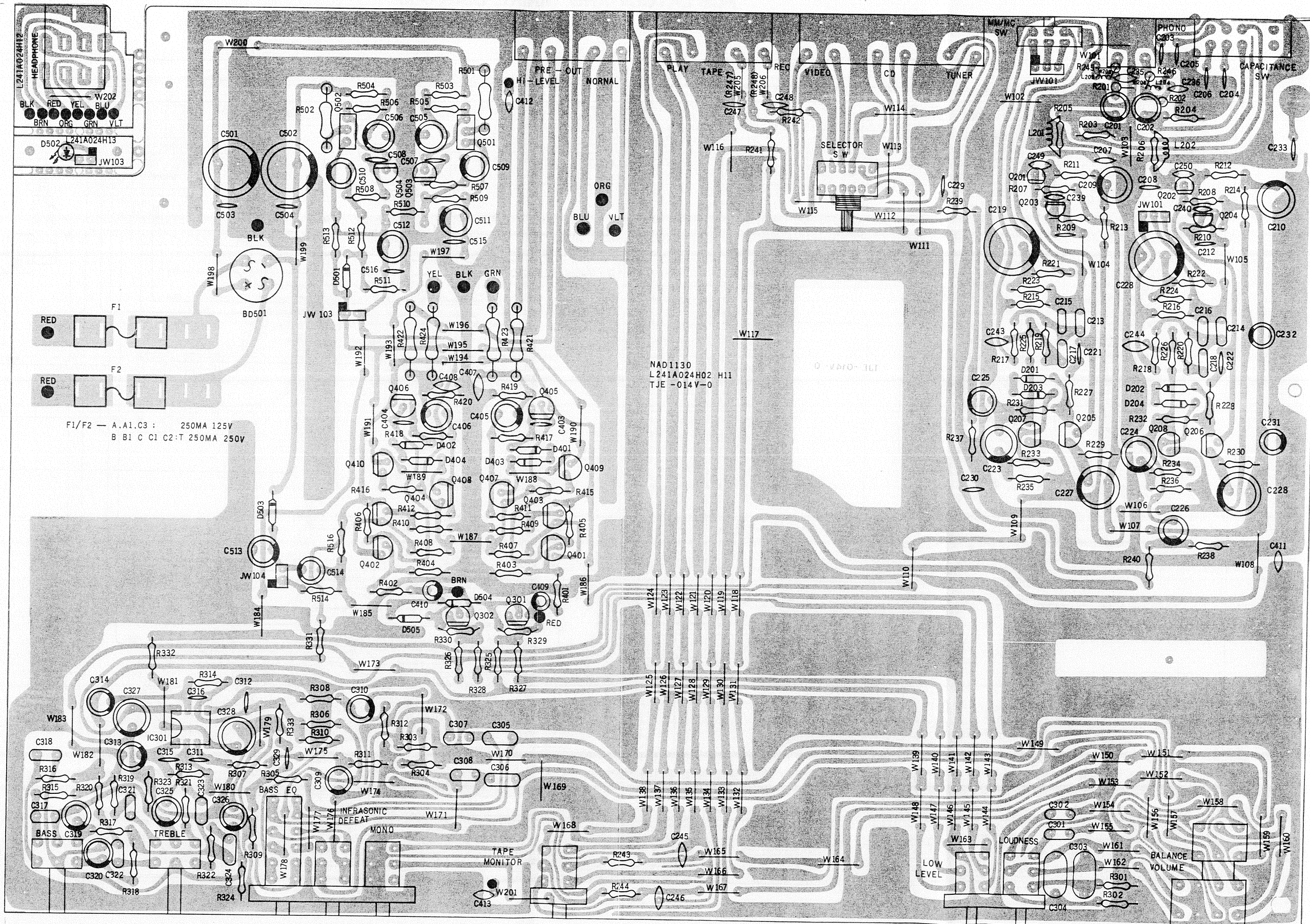
Shipping Weight	4.7 Kg/10 lb, 5 oz.
-----------------	---------------------

Power consumption	50/60 Hz at 120.
-------------------	------------------

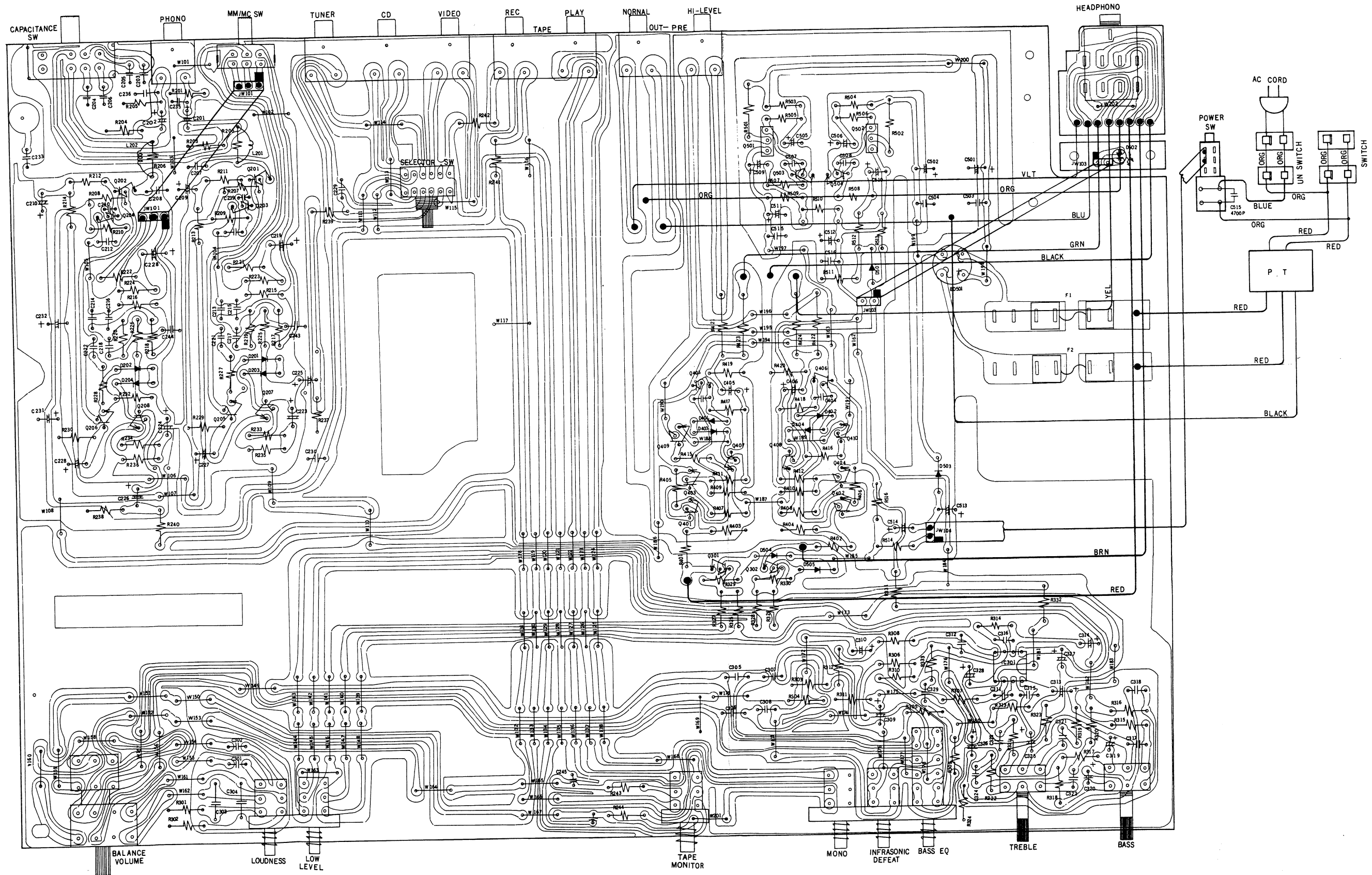
220 or 240 VAC

17 W

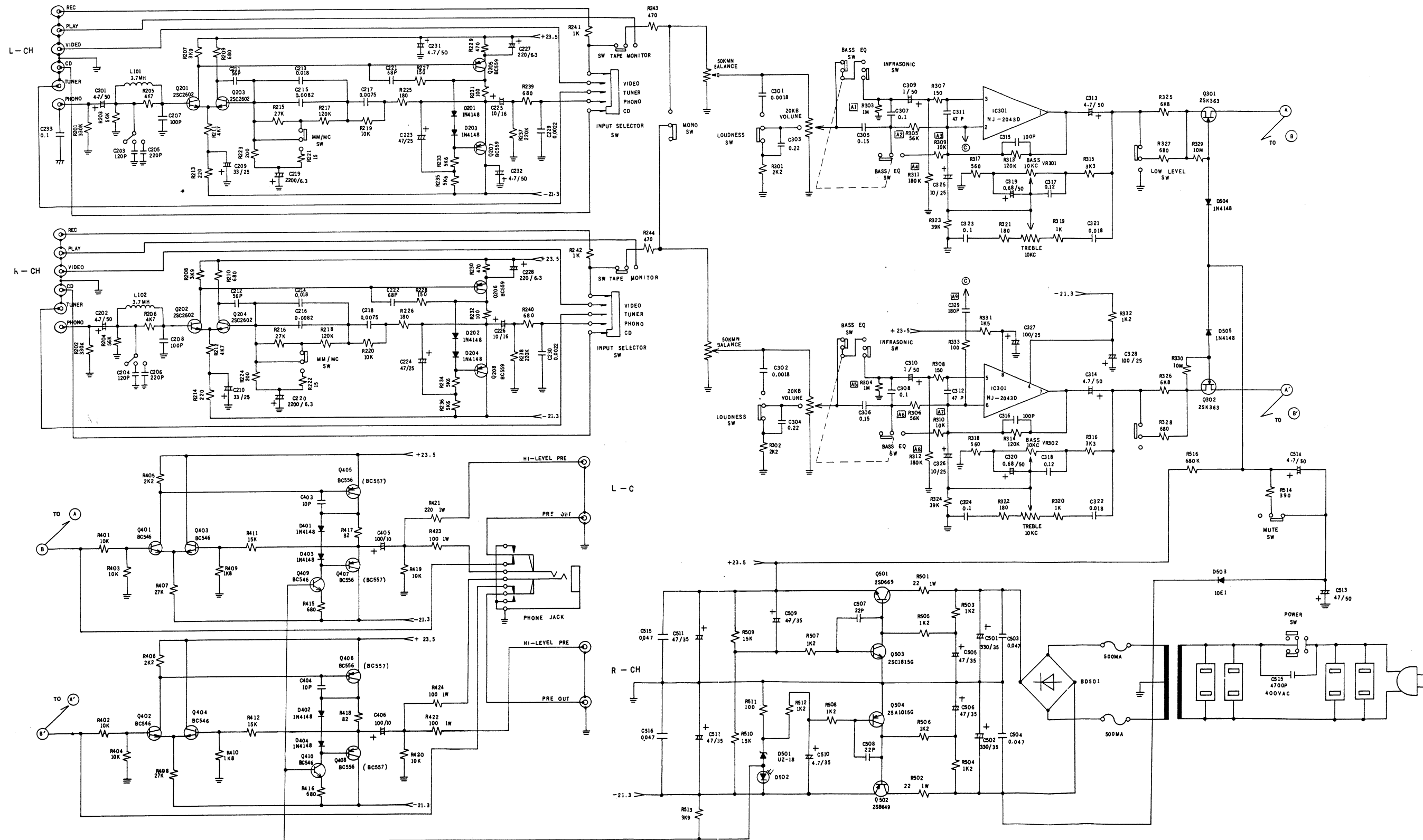
# MAIN PCB COMPONENT LOCATION



# PCB LAYOUT AND WIRING DIAGRAM



# SCHEMATIC DIAGRAM



NAD 1130 PARTS LIST

SYMBOL NO.	PART NO.	DESCRIPTION	REF
R201	L103Y214H49	Res, Carb. 330K ±5% 1/4W	
R202	"	" " " " " "	
R203	L103Y214H40	" 56K " " " "	
R204	"	" " " " " "	
R205	U103S104H27	" 4.7K " " " "	
R206	"	" " " " " "	
R207	L103Y214H26	" 3.9K " " " "	
R208	"	" " " " " "	
R209	L103Y214H17	" 680 " " " " "	
R210	"	" " " " " "	
R211	L103Y214H27	" 4.7K " " " "	
R212	"	" " " " " "	
R213	L103Y214H11	" 220 " " " " "	
R214	"	" " " " " "	
R215	L103Y216H59	" 27K ±2% " " "	
R216	"	" " " " " "	
R217	L103Y216H75	" 120K " " " "	
R218	"	" " " " " "	
R219	L103Y216H49	" 10K " " " "	
R220	"	" " " " " "	
R221	L103Y214H02	" 15 ±5% " " "	
R222	"	" " " " " "	
R223	L103Y216H08	" 200 ±2% " " "	
R224	"	" " " " " "	
R225	L103Y214H10	" 180 ±5% " " "	
R226	"	" " " " " "	
R227	L103Y214H09	" 150 " " " " "	
R228	"	" " " " " "	
R229	L103Y214H15	" 470 " " " " "	
R230	"	" " " " " "	
R231	L103Y214H07	" 100 " " " " "	
R232	"	" " " " " "	
R233	L103Y214H28	" 5.6K " " " " "	
R234	"	" " " " " "	
R235	"	" " " " " "	
R236	"	" " " " " "	
R237	L103Y214H47	" 220K " " " " "	
R238	"	" " " " " "	
R239	L103Y214H17	" 680 " " " " "	
R240	"	" " " " " "	
R241	L103Y214H19	" 1K " " " " "	
R242	"	" " " " " "	
R243	L103Y214H15	" 470 " " " " "	
R244	"	" " " " " "	
R301	L103Y214H23	" 2.2K " " " " "	
R302	"	" " " " " "	
R303	L103Y214H55	" 1M " " " " "	
R304	L103Y214H55	" 1M " " " " "	
R305	L103Y214H40	" 56K " " " " "	
R306	"	" " " " " "	
R307	L103Y214H09	" 150 " " " " "	
R308	"	" " " " " "	
R309	L103Y214H31	" 10K " " " " "	
R310	"	" " " " " "	
R311	L103Y214H46	" 180K " " " " "	
R312	"	" " " " " "	
R313	L103Y214H44	" 120K " " " " "	
R314	"	" " " " " "	
R315	L103Y214H25	" 3.3K " " " " "	
R316	"	" " " " " "	
R317	L103Y214H16	" 560 " " " " "	
R318	"	" " " " " "	
R319	L103Y214H19	" 1K " " " " "	
R320	"	" " " " " "	
R321	L103Y214H10	" 180 " " " " "	

SYMBOL NO.	PART NO.	DESCRIPTION	REF
R322	L103Y214H10	Res, Carb. 180 ±5% 1/4W	
R323	L103Y214H38	" 39K " " " "	
R324	"	" " " " " "	
R325	L103Y214H29	" 6.8K " " " "	
R326	"	" " " " " "	
R327	L103Y214H17	" 680 " " " " "	
R328	"	" " " " " "	
R329	L103Y214H59	" 10M " " " " "	
R330	"	" " " " " "	
R331	L103Y214H21	" 1.5K " " " " "	
R332	L103Y214H20	" 1.2K " " " " "	
R333	L103Y214H07	" 100 " " " " "	
R401	L103Y214H31	" 10K " " " " "	
R402	"	" " " " " "	
R403	L103Y214H31	" " " " " "	
R404	"	" " " " " "	
R405	L103Y214H23	" 2.2K " " " " "	
R406	"	" " " " " "	
R407	L103Y214H36	" 27K " " " " "	
R408	"	" " " " " "	
R409	L103Y214H22	" 1.8K " " " " "	
R410	"	" " " " " "	
R411	L103Y214H33	" 15K " " " " "	
R412	"	" " " " " "	
R413	"	" " " " " "	
R414	"	" " " " " "	
R415	L103Y214H17	" 680 " " " " "	
R416	"	" " " " " "	
R417	L103Y214H70	" 82 " " " " "	
R418	"	" " " " " "	
R419	L103Y214H31	" 10K " " " " "	
R420	"	" " " " " "	
R421	U105S005H17	" 220 " " 1W	
R422	"	" " " " " "	
R423	U105S005H13	" 100 " " 1W	
R424	"	" " " " " "	
R501	U105S005H05	" 22 " " 1W	
R502	"	" " " " " "	
R503	L103Y214H19	" 1K " " 1/4W	
R504	"	" " " " " "	
R505	"	" " " " " "	
R506	"	" " " " " "	
R507	"	" " " " " "	
R508	"	" " " " " "	
R509	L103Y214H33	" 15K " " " " "	
R510	"	" " " " " "	
R511	L103Y214H07	" 100 " " " " "	
R512	L103Y214H20	" 1.2K " " " " "	
R513	L103Y214H26	" 3.9K " " " " "	
R514	L103Y214H14	" 390 " " " " "	
R515	"	" " " " " "	
R516	L103Y214H53	" 680K " " " " "	
C201	L182Y322H63	Cap, El. 4.7µF +75-10% 50V	
C202	"	" " " " " "	
C203	L140Y203H37	Cap, Cer. 120PF ±5% 50WV	
C204	"	" " " " " "	
C205	L140Y306H05	" 220PF ±10% 50WV	
C206	"	" " " " " "	
C207	L140Y203H35	Cap, Cer. 100PF ±5% 50WV	
C208	"	" " " " " "	
C209	L183Y322H36	Cap, El. 33µF +50-10% 25V	
C210	"	" " " " " "	
C211	L140Y203H29	Cap, Cer. 56Pf ±5% 50WV	
C212	"	" " " " " "	

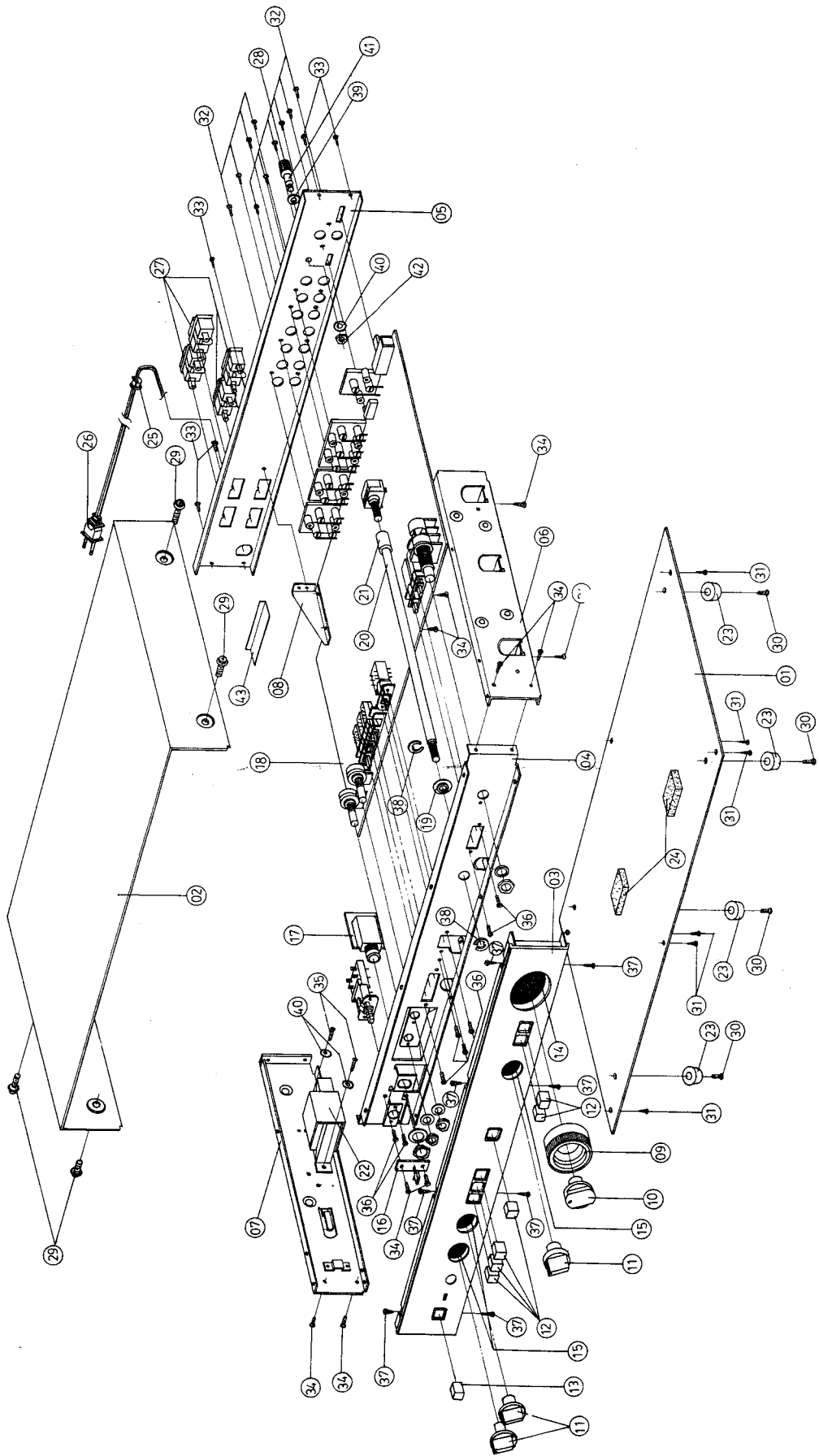
SYMBOL NO.	PART NO.	DESCRIPTION	REF
C213	L172Y306H16	Cap, Poly. 0.018µF ±5% 50WV	
C214	"	" " " " " "	
C215	L172Y306H12	" 0.0082µF " " " "	
C216	"	" " " " " "	
C217	L172Y004H01	" 0.0075µF " " " "	
C218	"	" " " " " "	
C219	U182S022H07	Cap, El. 2200µF +50-10% 6.3V	
C220	"	" " " " " "	
C221	L140Y203H31	Cap, Cer. 68PF ±5% 50WV	
C222	"	" " " " " "	
C223	L182Y322H37	Cap, El. 47µF +50-10% 25V	
C224	"	" " " " " "	
C225	L182Y322H22	Cap, El. 10µF +50-10% 16V	
C226	"	" " " " " "	
C227	L182Y322H03	" 220µF " " 6.3V	
C228	"	" " " " " "	
C229	L172Y306H05	Cap, Poly. 0.0022µF ±5% 50WV	
C230	"	" " " " " "	
C231	L182Y322H63	Cap, El. 4.7µF +75-10% 50V	
C232	"	" " " " " "	
C233	L140Y201H25	Cap, Cer. 0.1µF ±10% 50WV	
C301	L172Y306H04	Cap, Poly 0.0018µF ±5% 50WV	
C302	"	" " " " " "	
C303	U172S002H15	" 0.22µF " " " "	
C304	"	" " " " " "	
C305	U172S002H14	" 0.15µF " " " "	
C306	"	" " " " " "	
C307	L172Y306H25	Cap, Poly. 0.1µF ±5% 50WV	
C308	"	" " " " " "	
C309	U182S033H40	Cap, El. 1µF +75-10% 50V	
C310	"	" " " " " "	
C311	L140Y203H27	Cap, Cer. 47PF ±5% 50WV	
C312	"	" " " " " "	
C313	L182Y322H63	Cap, El. 4.7µF +75-10% 50V	
C314	"	" " " " " "	
C315	L140Y203H35	Cap, Cer. 100pF ±5% 50WV	
C316	"	" " " " " "	
C317	L172Y306H26	Cap, Poly 0.12µF " " " "	
C318	"	" " " " " "	
C319	U192S022H59	Cap, El. 0.68µF +75-10% 50V	
C320	"	" " " " " "	
C321	L172Y306H16	Cap, Poly 0.018µF ±5% 50WV	
C322	"	" " " " " "	
C323	L172Y306H25	" 0.1µF " " " "	
C324	"	" " " " " "	
C325	L182Y322H34	Cap, El. 10µF +50-10% 25V	
C326	"	" " " " " "	
C327	L182Y322H38	" 100µF " " " "	
C328	"	" " " " " "	
C329	L140Y306H04	Cap, Cer. 180pF ±5% 50WV	
C401	"	" " " " " "	
C402	"	" " " " " "	
C403	L140Y203H11	Cap, Cer. 10pF ±0.5pF 50WV	
C404	"	" " " " " "	
C405	L182Y322H14	Cap, El. 100µF +50-10% 10V	
C406	"	" " " " " "	
C501	U182S022H51	Cap, El. 330µF +50-10% 35V	
C502	"	" " " " " "	
C503	L140Y306H45	Cap, Cer. 0.047µF +80-20% 50WV	
C504	"	" " " " " "	
C505	L182Y322H48	Cap, El. 47µF +50-10% 35V	
C506	"	" " " " " "	
C507	L140Y203H19	Cap, Cer. 22pF ±5% 50WV	
C508	"	" " " " " "	
C509	L182Y322H63	Cap, El. 4.7µF +75-10% 50V	

SYMBOL NO.	PART NO.	DESCRIPTION	REF
C510	L182Y322H63	Cap, El. 4.7µF +75-10% 50V	
C511	L182Y302H48	Cap, El. 47µF +50-10% 35V	
C512	"	" " " " " "	
C513	L182Y322H67	" 47µF " " 50V	
C514	L182Y322H63	" 4.7µF +75-10% 50V	
C515	L140Y306H45	Cap, Cer. 0.047µF +80-20% 50WV	
C516	L140Y306H45	" " " " " "	
Q201	L260D023H02	TR, 2SC2602 (G)	
Q202	"	" " " " " "	
Q203	"	" " " " " "	
Q204	"	" " " " " "	
Q205	L260D027H03	TR, BC559B	
Q206	"	" " " " " "	
Q207	"	" " " " " "	
Q208	"	" " " " " "	
Q301	L260D036H01	TR, 2SK363 (GR)	
Q302	"	" " " " " "	
Q401	L260D034H02	TR, BC546A	
Q402	"	" " " " " "	
Q403	"	" " " " " "	
Q404	"	" " " " " "	
Q405	L260D035H06	TR, BC557B	
Q406	"	" " " " " "	
Q407	"	" " " " " "	
Q408	"	" " " " " "	
Q409	L260D034H02	TR, BC546A	
Q410	"	" " " " " "	
Q501	L260D024H05	TR, 2SD669A (C)	
Q502	L260D021H05	TR, 2SB649A (C)	
C503	U260S061H03	TR, 2SC1815 (GR)	
Q504	L260D020H03	TR, 2SA1015 (GR)	
D201	U264D037H01	DIODE, 1N4148	
D202	"	" " " " " "	
D203	"	" " " " " "	
D204	"	" " " " " "	
D401	U264D037H01	DIODE 1N4148	
D402	"	" " " " " "	
D403	"	" " " " " "	
D404	"	" " " " " "	
D501	U264C003H01	DIODE, ZENER UZ-18B (H)	
D502	"	" " " " " "	
D503	U264S003H01	DIODE 10E1	
D504	U264D037H01	DIODE 1N4148	
D505	"	" " " " " "	
BD501	L264D017H01	DIODE PB153M	
IC301	L262C020H01	IC, NJM2043 (D)	
LED	L268Y026H01	LED, SE-9421D (GREEN)	
L201	L351Y004H01	COIL, TOROIDL	
L202	"	" " " " " "	
VR201	L121Y011H01	VR, VOLUME 20KB+50KMN	
VR301	L121Y010H01	VR, 10KB	
VR302	"	" " " " " "	
SW	L430Y009H01	SW, SELECT CD/PHONO/TU/VIDEO	
SW	L431Y012H01	SW, SLIDE MM/MC	
SW	L431Y021H01	SW, SLIDE CAPACITANCE	
SW	L432Y028H01	SW, PUSH LOW LEVEL LOUDNESS	
SW	L432Y029H01	SW, PUSH TAPE MONITOR	

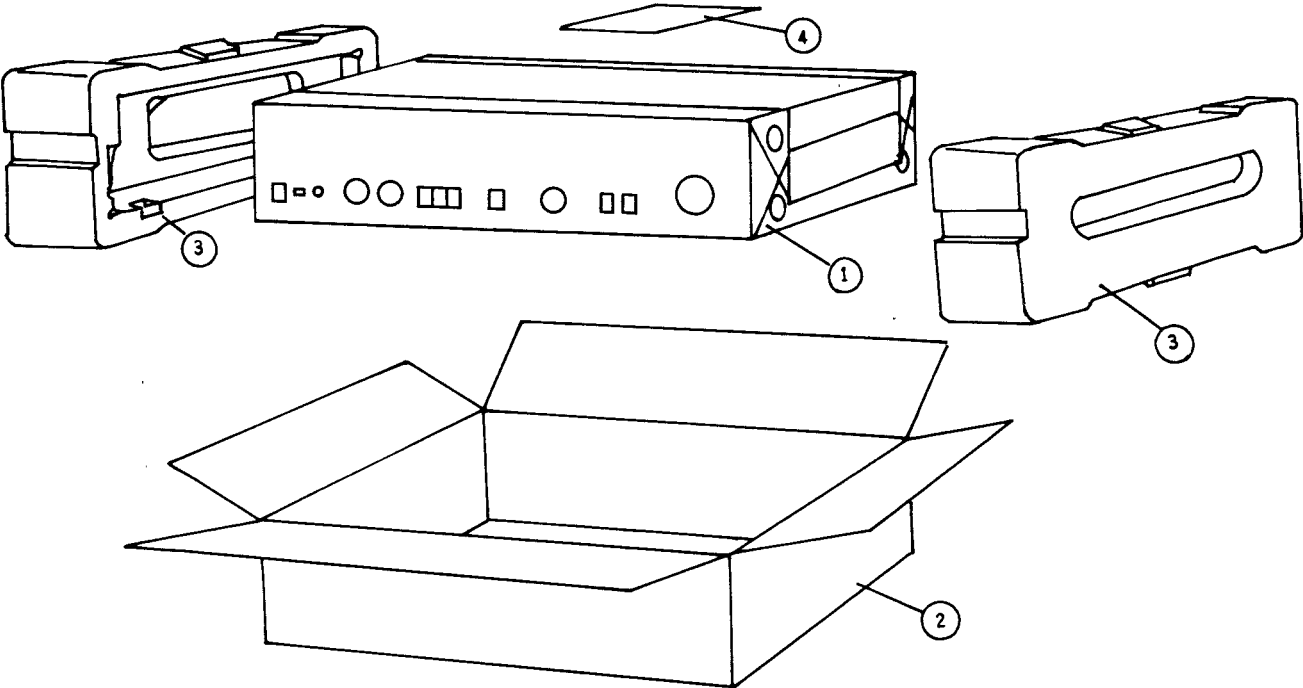
SYMBOL NO.	PART NO.	DESCRIPTION	REF
SW	L432Y045H01	SW, PUSH MONO/INF/BASS	
J	L440Y005H01	JACK RAC PHONO	
J	L440Y006H01	JACK RCA PRE-OUT TAPE	
J	L440Y008H01	JACK RCA TU/CD/VIDEO	
J	L451Y017H01	JACK HEAD PHONE	
TP	U685S223H01	PIN	
PT	L350Y049H01	TRANS. POWER	A1
PT	L350Y050H01	"	A
PT	L350Y051H01	"	B
PT	L350Y052H01	"	C1
PT	L350Y052H01	"	C
PT	L350Y051H01	"	B1
PT	L350Y053H01	"	C3
PT	L350Y052H01	"	C2
SW	L432Y035H01	SW, POWER	A1
SW	L432Y035H01	SW, POWER	A
SW	L432Y034H01	"	B
SW	L432Y034H01	"	C1
SW	L432Y034H01	"	C
SW	L432Y034H01	"	B1
SW	L432Y034H01	"	C3
SW	L432Y034H01	"	C2
F	U283S017H04	FUSE UL	A1
F	"	"	A
F	U283S022H27	FUSE, SEMKO	B
F	"	"	C1
F	"	"	C
F	U283S022H27	FUSE SEMKO	B1
F	U283S017H04	FUSE UL	C3
F	U283S022H27	FUSE SEMKO	C2
	L230Y002H01	CONNECTOR	B
	"	"	C1
	"	"	C
	"	"	B1
	"	"	C2
	L457D501H01	FUSE HOLDER	

ITEM	PARTS NO.	NAME	Q'TY
01	L580B004H01	Cover Bott	1
02	L561B006H01	Cabinet	1
03	L702A016H01	Panel Front	1
04	L547B009H01	Chassis Front Sub.	1
05	L582B003H01	Panel Rear	A1
05	L582B003H01	"	A
05	L582B003H02	"	B
05	L582B003H03	"	C1
05	L582B003H03	"	C
05	L582B003H02	"	B1
05	L582B003H03	"	C3
05	L582B003H04	"	C2
06	L547B008H01	Frame (R)	1
07	L547B007H01	Frame (L)	1
08	L541D089H01	Bracker, PCB Support	1
09	L704D062H01	Knob Volume	1
10	L704D065H01	Knob Balance	1
11	L704D064H01	Knob Rotary	3
12	L704D061H01	Knob Push	6
13	L704D061H02	Knob Power	1
14	L550D037H02	Felt Ring	1
15	L550D037H01	Felt Ring	3
16	L241A024H13	PCB-Main (LED)	1
17	L241A024H12	PCB Main (HEAD PHONE)	1
18	L241A024H01	PCB Main (PRE AMP)	1
19	L550D036H01	Guide Shaft	1
20	L531D017H02	Shaft Rotary	1
21	L562D022H01	Sleeve, input selector Switch	1
22	L350Y049H01	Transformer, Power	1
23	L771D006H01	Foot Rubber	4
24	L552D015H01	Cushion Sponge	2
25	L540D501H01	Clamper	1
26	L242Y501H01	AC Cord	A1
26	L242Y501H01	"	A
26	U242C872H06	"	B
26	U242C809H18	"	C1
26	U242C809H18	"	C
26	L242Y013H01	"	B1
26	L242C310H01	"	C3
26	U242C809H18	"	C2
27	L449Y002H02	AC Socket	A1
27	L449Y002H02	"	A
27	L449Y002H02	"	C3
27	L449Y002H02	"	C2
28	L531D018H01	Shaft Gnd	1
29	L650D005H02	Screw-B M4x5	4
30	U650S025H31	Screw-P M4 x 10	4
31	U656S263H23	Screw-Tap 2-3x6	6
32	U656S164H24	Screw-Tap 1-3x8	10
33	U656S164H24	Screw-Tap 1-3x8	5
34	U656S263H33	Screw-Tap 2-3x6	10
35	U656S165H22	Screw-Tap 1-3x5	2
36	U650S063H19	Screw-B M3x6	8
37	U656S164H23	Screw-Tap 1-3x6	8
38	U685S100H08	E-Ring 5	2
39	L683D011H01	Washer Post	1
40	U680S322H03	Washer Toothed 3	3
41	L670D002H01	Nut Gnd	1
42	L670D004H01	Nut M3.5	1
43	L840D009H01	Cover AC Socket	A1
43	"	Cover AC Socket	A
43	"	Cover AC Socket	C3
43	"	Cover AC Socket	C2

EXPLODED VIEW



# PACKING DIAGRAM



Item	Number	NAME	Q'ty
1	L831D004H01	Bag-Poly	1
2	L800D004H02	Carton Individual	1
3	L813A010H01	Styro Packing	2
4	L871B001H72	Instruction	1