

NAD **SERVICE**
MANUAL

MONITOR SERIES

7600

AM/FM RECEIVER

Contents

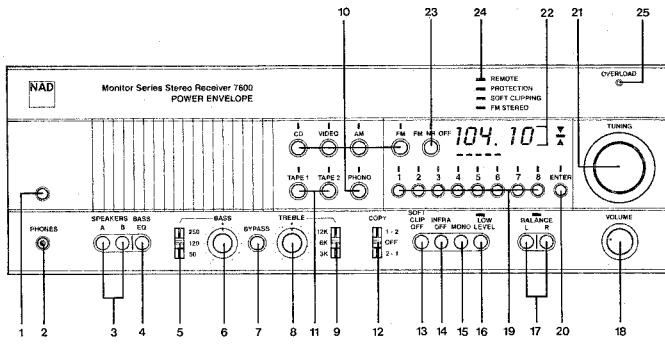
	Page
SPECIFICATIONS	6
BLOCK DIAGRAM	9
ALIGNMENT PROCEDURES	12
WIRING DIAGRAM	15
SCHEMATIC AND PCB LAYOUT	19
EXPLODED VIEW	51
PARTS LIST	56
SCHEMATIC DIAGRAM	67

Version List

[A] : USA Version
[A1] : CANADA Version
[B] : U.K. Version
[B1] : AUSTRALIA/N.Z. Version
[C] : EUROPE & OTHERS Version
[C1] : W.GERMANY Version

FRONT PANEL

- | | | | | |
|----------------------|-------------------------|-------------------------------|-------------------------|-------------------------|
| 1. Power. | 6. Bass. | 11. Tape 1, Tape 2 (Monitor). | 16. Low Level. | 21. Tuning. |
| 2. Phones. | 7. Tone Control Bypass. | 12. Tape Copy. | 17. Balance Left/Right. | 22. Tuning Display. |
| 3. Speaker Selector. | 8. Treble. | 13. Soft Clipping Off. | 18. Volume. | 23. FM NR Off. |
| 4. Bass EQ. | 9. Treble Range. | 14. Infrasonic Filter Off. | 19. Pre-sets. | 24. Status Indicators. |
| 5. Bass Range. | 10. Input Selector. | 15. Mono. | 20. Memory Enter. | 25. Overload Indicator. |

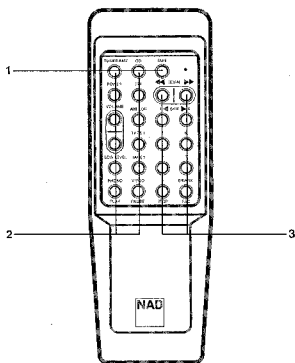
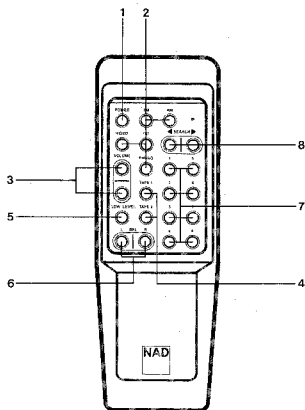


REMOTE CONTROL

- | | |
|------------------------------|---------------------------|
| 1. Power. | 5. Low Level. |
| 2. Input Selector. | 6. Balance Left/Right. |
| 3. Volume Up/Down. | 7. Station Pre-sets. |
| 4. Tape 1, Tape 2 (Monitor). | 8. Tuning Search Up/down. |

UNIFIED REMOTE CONTROL

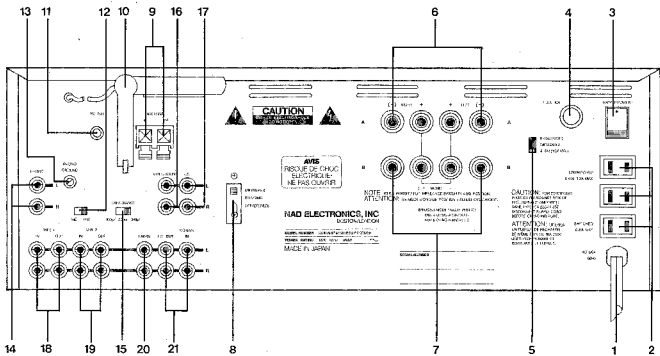
- | | |
|----------------------------|----------------------|
| 1. Mode Selection | 3. Station Selection |
| 2. Signal Source Selection | CD Tracks |
| Volume | Tape Coations |
| Playback Controls | |



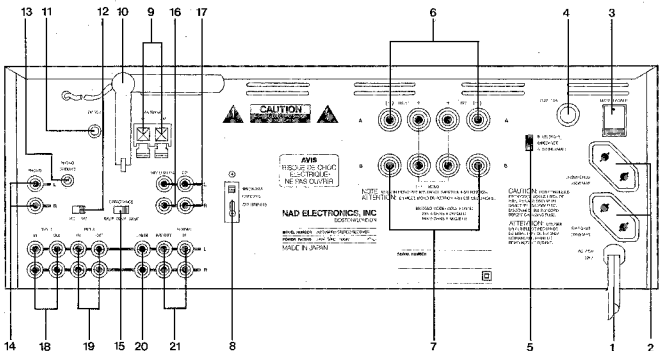
REAR PANEL (For A, A1 Version)

- | | | |
|-------------------------|--------------------------|----------------------------------|
| 1. AC Line Cord. | 8. Bridging. | 15. Phono Capacitance (MM only). |
| 2. AC Outlets. | 9. AM Antenna Terminals. | 16. Video Sound Input. |
| 3. Master Power Switch. | 10. AM Rod Antenna. | 17. CD Input. |
| 4. AC Fuse. | 11. FM Antenna Input. | 18. Tape 1 Input/Output. |
| 5. Speaker Impedance. | 12. MM/MC. | 19. Tape 2 Input/Output. |
| 6. Speakers A. | 13. Phono Ground. | 20. Lab Input. |
| 7. Speakers B. | 14. Phono Input. | 21. Preamp Out, Normal In. |

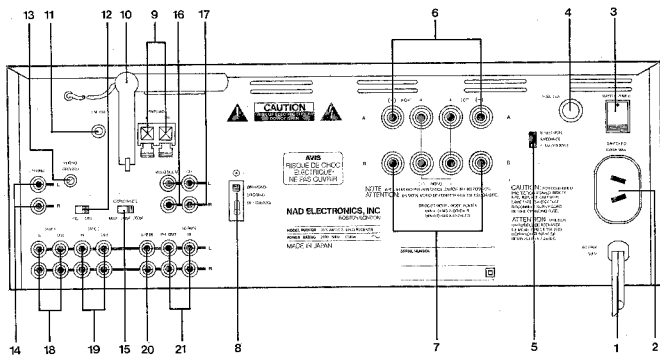
CAUTION
 HIGH VOLTAGE
 CAUTION: REMOVE THE MARK OF ELECTRIC SHOCK. DO NOT REMOVE COVER FOR REPAIR. NO USER SERVICEABLE PARTS. REFER SERVICE TO QUALIFIED SERVICE PERSONNEL.



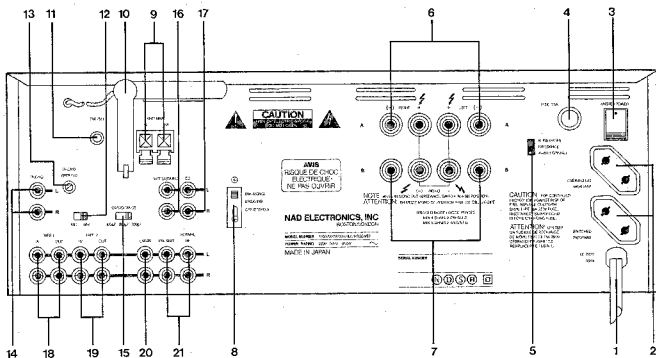
(For B Version)



(For B1 Version)



(For C, C1 Version)



SPECIFICATIONS

FEATURES

A. CONTROLS AND SWITCHES

- Function Selector switch : CD/VIDEO/PHONO/ : Sensor type
FM/AM
- Tuning control : Up/Down : Rotary type
- Volume control : Min/Max : Rotary type
- Low Level switch : On/Off : Push type
- Enter switch : On : Sensor type
- Preset switch (1-8) : On : Sensor type
- Mono switch : Stereo/Mono : Push type
- Bass control : Min/Max : Rotary type
- Treble control : Min/Max : Rotary type
- Tone Bypass switch : On/Off : Push type
- Tape Monitor switch : Tape 1/Tape 2 : Sensor type
- Dubbing switch : 1→2/Off/2→1 : Lever type
- Speaker Selector switch : A/B : Push type
- Bass EQ switch : On/Off : Push type
- Balance control : Left/Right : Sensor type
- FM NR Off switch : On/Off : Sensor type
- AC Power switch : On/Off : Sensor type
- Soft Clipping switch : On/Off : Push type
- Infrasonic switch : On/Off : Push type
- Bass Turnover switch : 250/120/50Hz : Lever type
- Treble Turnover switch : 12/6/3kHz : Lever type
- FM De-Emphasis switch : 75/50 μsec : Slide type (Inside)
- Scan Step switch : AM 9/10kHz : Slide type (Inside)
- PHONO switch : MC/MM : Slide type (Rear)
- PHONO Capacitance Loading switch : 100/200/300 pF : Slide type (Rear)
- Bridging switch : Stereo/Mono : Slide type (Rear)
- Speaker Impedance switch : 4/8Ω : Slide type (Rear)
- Master Power switch : On/Off : Rocker type (Rear)

B. EXTERNAL CONNECTIONS

- AM antenna : 2 p terminal
- FM antenna : 75Ω F-type coaxial terminal
- Phono input (L/R) : RCA type pin jack (2p)
- Lab input (L/R) : RCA type pin jack (2p)
- CD input (L/R) : RCA type pin jack (2p)
- Video input (L/R) : RCA type pin jack (2p)
- Tape monitor input (L/R)×2 : RCA type pin jack (4p)
- Pre output (L/R) : RCA type pin jack (2p)
- Normal input (L/R) : RCA type pin jack (2P)
- Recording output (L/R)×2 : RCA type pin jack (4p)
- AC Line cord : UL type
- Speaker system A : Army type binding post for banana plug [A][A1][B][B1] not for banana plug [C][C1]
- Speaker system B : Army type binding post for banana plug [A][A1][B][B1] not for banana plug [C][C1]

C. OUTPUT LOAD

- Speaker output : 8Ω/4Ω
- Headphone output : 8Ω
- Recording output : 10KΩ

D. AC POWER SUPPLY

- 120V/60Hz [A][A1]
240V/50Hz [B][B1]
220V/50Hz [C][C1]

E. REMOTE CONTROL TRANSMITTER

- Volume control : Up/Down : Sensor type
- Power switch : On/Off : Sensor type
- Memory switch (1-8) : On : Sensor type
- Search : Up/Down : Sensor type
- Low Level : On/Off : Sensor type
- Tape : Tape 1/Tape 2 : Sensor type
- Function Selector : Phono/CD/VIDEO/ : Sensor type
FM/AM
- Power supply : UM3×2
- Size : W=60 H=180 D=36(mm)

F. UNIFIED REMOTE CONTROL TRANSMITTER

- Volume control : Up/Down : Sensor type
- Power switch : On/Off : Sensor type
- Low Level : On/Off : Sensor type
- Tuner Amp. (Mode Selector) : On : Sensor type
- 4-1. Band Selector : AM/FM : Sensor type
- 4-2. Memory switch (1-8) : On : Sensor type
- 4-3. Frequency control : Up/Down : Sensor type
- CD (Mode/Function Selector) : On : Sensor type
- 5-1. Scan : Up/Down : Sensor type
- 5-2. Skip : Up/Down : Sensor type
- 5-3. Play : On : Sensor type
- 5-4. Pause : On : Sensor type
- 5-5. Stop : On : Sensor type
6. Tape (Mode Selector) : On : Sensor type
- 6-1. F.F. : On : Sensor type
- 6-2. Rew : On : Sensor type
- 6-3. Play : On : Sensor type
- 6-4. Pause : On : Sensor type
- 6-5. Stop : On : Sensor type
- 6-6. Rec : On : Sensor type
7. Other Function Selector : PHONO/VIDEO
8. Tape : Tape 1/Tape 2
9. Power supply : UM3×2
10. Size : W=60 H=180 D=36 (mm)

G. DIMENSIONS AND NET WEIGHT

- Dimensions : W=435 H=150 D=422(mm)
- Net Weight : 16.5Kg

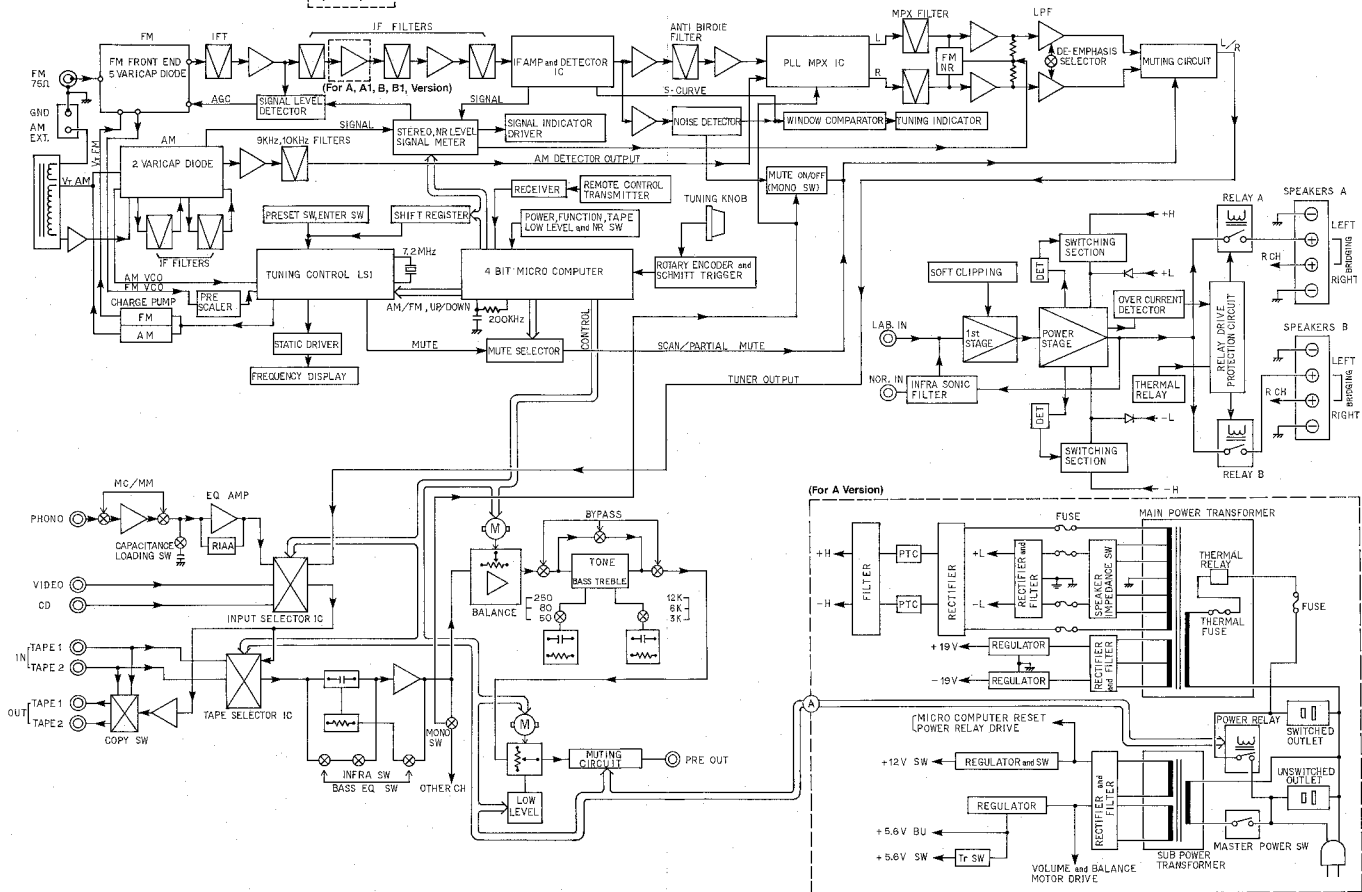
[A] : USA Version
[A1] : CANADA Version

[B] : U.K. Version
[B1] : AUSTRALIA/N.Z. Version

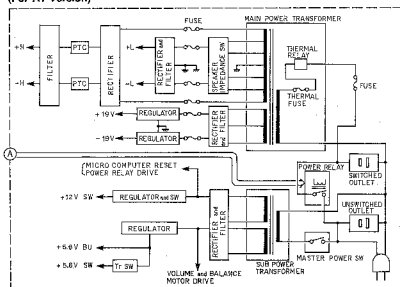
[C] : EUROPE & OTHERS Version
[C1] : W.GERMANY Version

BLOCK DIAGRAM

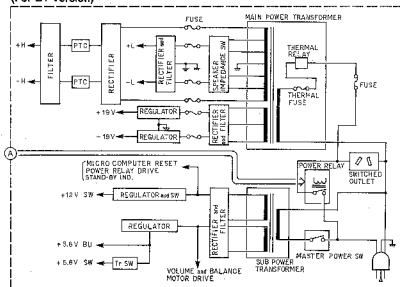
(For C, C1 Version)



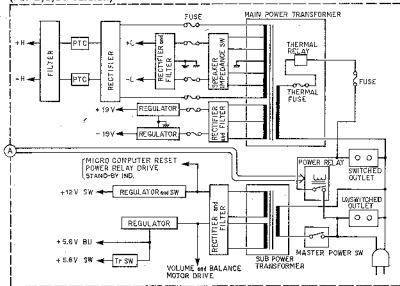
(For A1 Version)



(For B1 Version)



(For B,C,C1 Version)



ALIGNMENT PROCEDURES

Amplifier

Condition

1. SPEAKER IMPEDANCE SW (Rear Panel): 4-8Ω (NORMAL)
2. SPEAKER Selector: A position
3. SPEAKER A load: 8Ω dummy

IDLING

1. Set the VOLUME control to minimum.
2. No input.
3. Preheat more than 15 minutes.
4. Connect the DC digital volt meter to TP601 (L)/TP602 (R).
5. Adjust SVR603 (L)/SVR604 (R) for $7.5 \pm 0.5\text{mV}$.

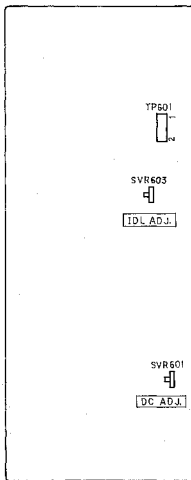
OFFSET VOLTAGE

1. Set the VOLUME control to minimum.
2. No input.
3. Connect the DC digital volt meter to the SPEAKER TERMINAL A (L/R).
4. Adjust SVR601 (L)/SVR602 (R) for between -5mV and $+5\text{mV}$.

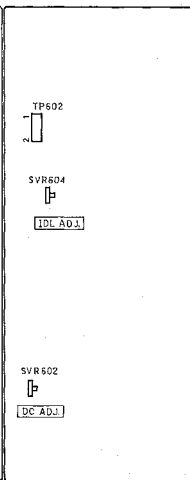
L/R OUTPUT BALANCE

1. Set the VOLUME control to maximum.
2. Connect the audio generator to both channels of VIDEO.
3. Set the Mono switch and the LOW LEVEL SW to OFF position.
4. Set the input frequency to 1kHz and 3V at the Left CH of SPEAKER OUTPUT.
5. Adjust SVR501 for $3V \pm 0.1\text{dB}$ at the right CH.

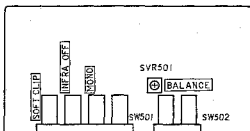
ML P.C.Board



MR P.C.Board



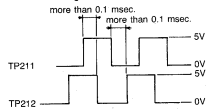
SV P.C.Board



Tuner

ENCODER LEVEL

1. Connect the dual trace oscilloscope to the test point TP211/TP212, monitor the rotary encoder output.
2. Adjust SVR201 until the overlap part of output waveform is more than 0.1 msec. at the test point TP211/TP212 when turn as fast as possible the tuning knob.



AM

Condition

1. Tuning method: Tuning indicator ON or the output is maximum.
2. Modulation: 400Hz, 30%
3. Generator output: IRE Loop antenna 24" (60cm) spacing.
4. Preheat: More than 1 minute.

TUNING VOLTAGE

1. No input.
2. Connect the DC digital volt meter to the test point TP101 and GND.
3. Set the tuner frequency to F1 kHz.
4. Adjust TC102 for 30±0.1V.
5. Set the tuner frequency to F2 kHz.
6. Adjust T101 for 1.6±0.05V.

IF

1. Set the tuner frequency to the point of non-interference.
2. Connect the output of IF sweep generator to the test point TP102 through I/F dummy and set the frequency to 450±0.5kHz.
3. Connect the input of IF sweep generator to the test point TP103 through a 10μF cap.
4. Adjust T102/T103 for flat and maximum output.

TRACKING

1. Set the tuner frequency to F3 kHz.
2. Connect the output of signal generator to IRE Loop and set the frequency to F3 kHz.
3. Connect the ACVM to TAPE OUT jacks.
4. Adjust TC101 for maximum output.
5. Change the tuner frequency to F4 kHz.
6. Adjust the Bar antenna for maximum output.

SIGNAL METER

1. Set the tuner frequency to F5 kHz.
2. Set the input level to 84dBm.
3. Adjust SVR101 until the signal indicators fully light up.

MUTING LEVEL

1. Set the input level to 48dBm.
2. Short TP141 to ground.
3. Adjust SVR102 until the tuning indicator lights up.

AM Frequency table

	A, A1	B, B1, C, C1
F1	1710	1710
F2	520	522
F3	1400	1404
F4	600	603
F5	1000	999

FM

Condition

1. Tuning method: Tuning indicator ON
2. Generator: Mono-1kHz, 75kHz dev. Stereo-1kHz, 75kHz dev. pilot 9%
3. TAPE OUT load: 100kΩ resistor shunted by 1000pF capacitor.
4. Input level: 65dB unless otherwise noticed.
5. De-Emphasis switch(SW061): 75μs Position.
6. Preheat more than 1 minute.

TUNING VOLTAGE

1. Connect the DC digital volt meter to TP001 and GND.
2. Set the tuner frequency to 87.50MHz.
3. Adjust OSC-L (Front end) for 3.6±0.2V.
4. Change the tuner frequency from 87.50MHz to 108.00MHz.
5. Check for 30.0±0.1V.

V.C.O

1. Connect the frequency counter to TP003.
2. Set the tuner frequency to 98.00MHz.
3. Adjust TC201 for 108.700MHz±3kHz.

IF

1. Connect the ACVM and the distortion meter to TAPE OUT jacks.
2. Connect the DC digital volt meter to TP002.
3. Set the tuner frequency to 98.00MHz.
4. Set the input level to V1 dB.
5. Set the Mono switch to ON position. (Partial mute OFF)
6. Adjust IFT (Front end) and T001 for minimum distortion.
7. Change the input level to 65dB.
8. Adjust T002 (PRI) for between -20mV and +20mV.
9. Adjust T002 (SEC) for minimum distortion.

TRACKING

1. Set the tuner frequency to 106.00MHz.
2. Set the input level to V1 dB.
3. Adjust ANT-TC1, 2, 3 and 4 (Front end) for minimum distortion or maximum output.
4. Change the tuner frequency to 90.00MHz.
5. Adjust ANT-L1, 2, 3 and 4 (Front end) for minimum distortion or maximum output.

SIGNAL METER

1. Set the input level to 71.3dB.
2. Adjust SVR141 until the topmost of signal indicators light up.

STEREO LEVEL

1. Set the tuner frequency to 98.00MHz.
2. Set the input level to 24.3dB.
3. Set the Mono switch to OFF position.
4. Adjust SVR142 until the STEREO indicator lights up.

SEPARATION

1. Change the input level to 65dB.
2. Connect the ACVM to TAPE OUT jacks.
3. Adjust SVR061 for best separation.

PILOT LEAK LEVEL

1. Change the modulation to pilot only.
2. Adjust T061 (L)/T062 (R) for minimum leak level.

L/R OUTPUT LEVEL

1. Change the modulation from stereo to mono.
2. Adjust SVR062 until the right CH level is the same as the left CH level.

SCAN STOP LEVEL

1. Set the input level to V2 dB.
2. Connect the DC volt meter to the cathode of D152 or D153.
3. Adjust SVR001 until the voltage changes 5V from 0V.

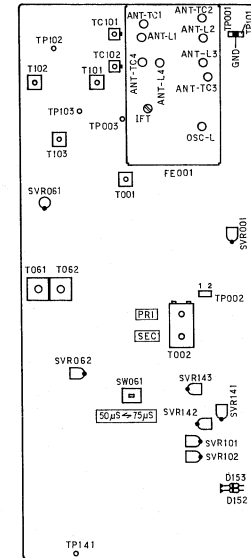
FM NR LEVEL

1. Set the input level to V3 dB.
2. Change the modulation from mono to stereo.
3. Connect the ACVM to TAPE OUT jacks.
4. Adjust SVR143 for 60dB S/N in stereo.

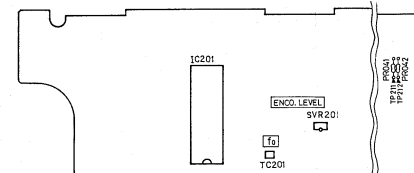
FM Input Level table

	A, A1	B, B1	C	C1
V1	8.3-10.3	8.3-10.3	12.3-15.3	12.3-15.3
V2	29.3	29.3	27.3	27.3
V3	34.3	35.3	36.3	38.3

TIM P.C.Board

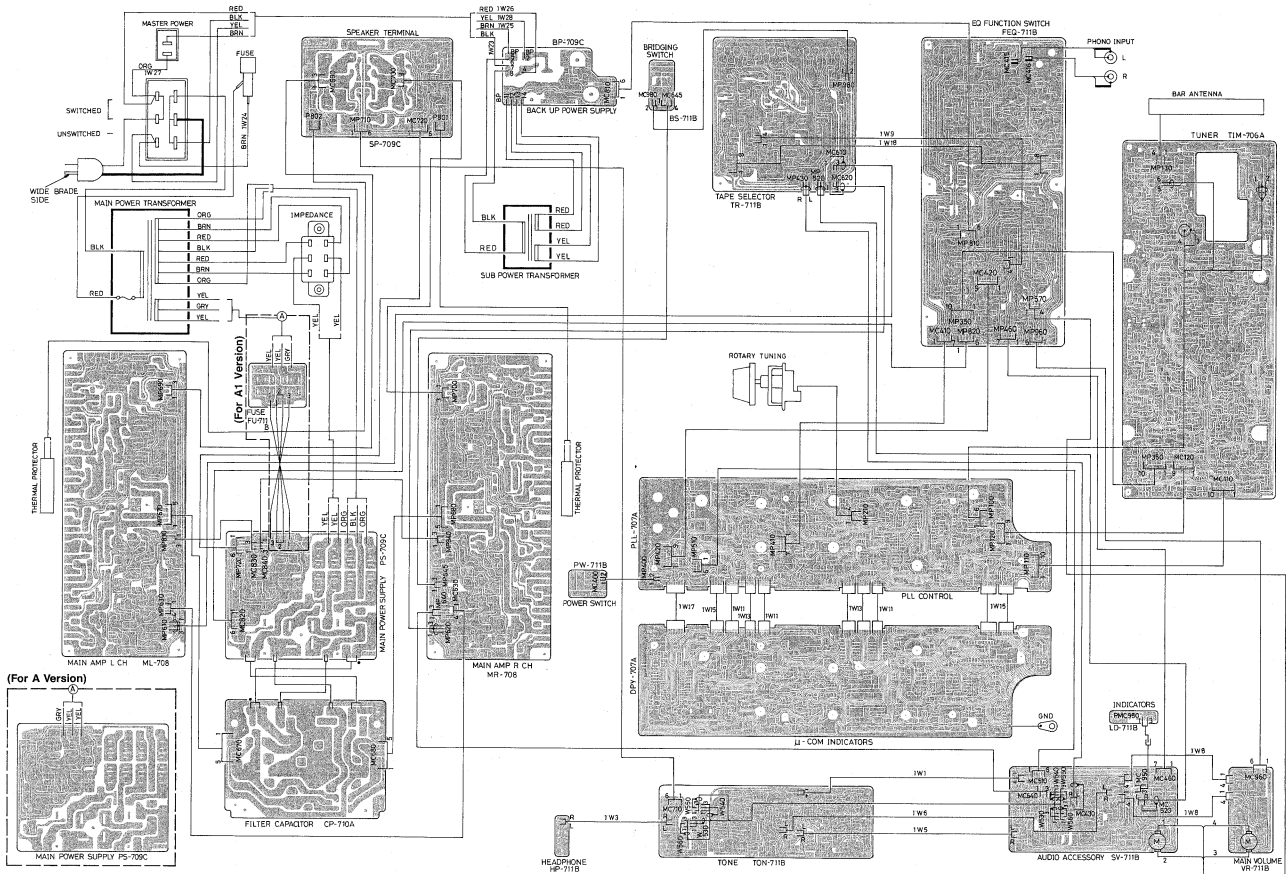


PLL P.C.Board



WIRING DIAGRAM (Component side)

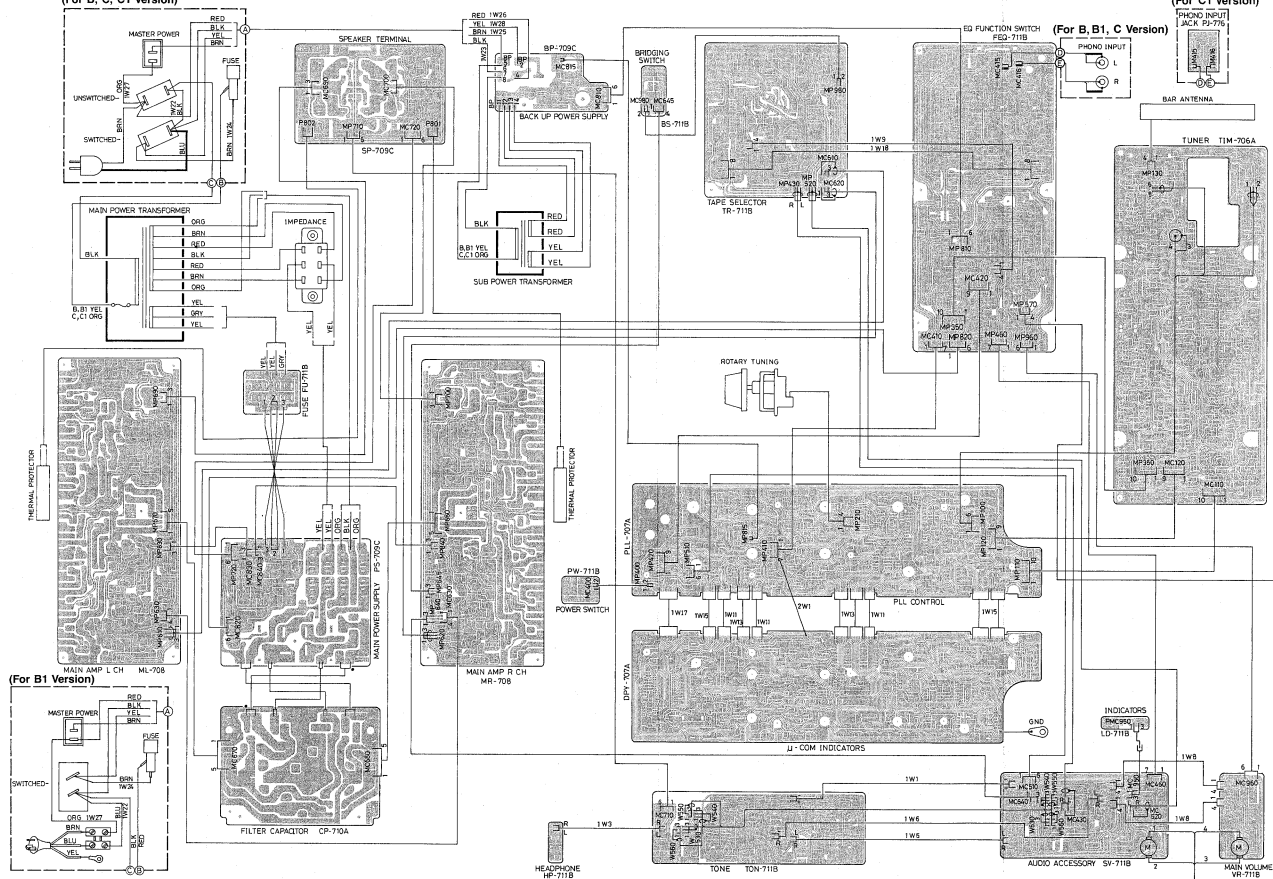
(For A,A1 Version)

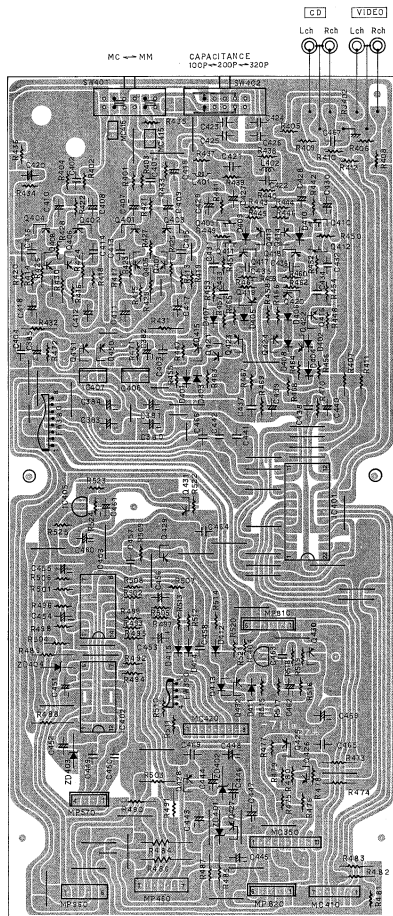


(For B,B1,C,C1 Version)

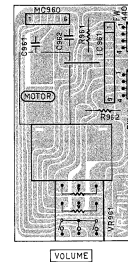
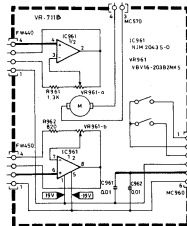
(For B, C, C1 Version)

(For C1 Version)

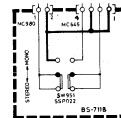




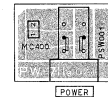
Main Volume (VR-PCB)



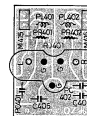
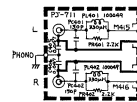
Bridging Switch (BS-PCB)



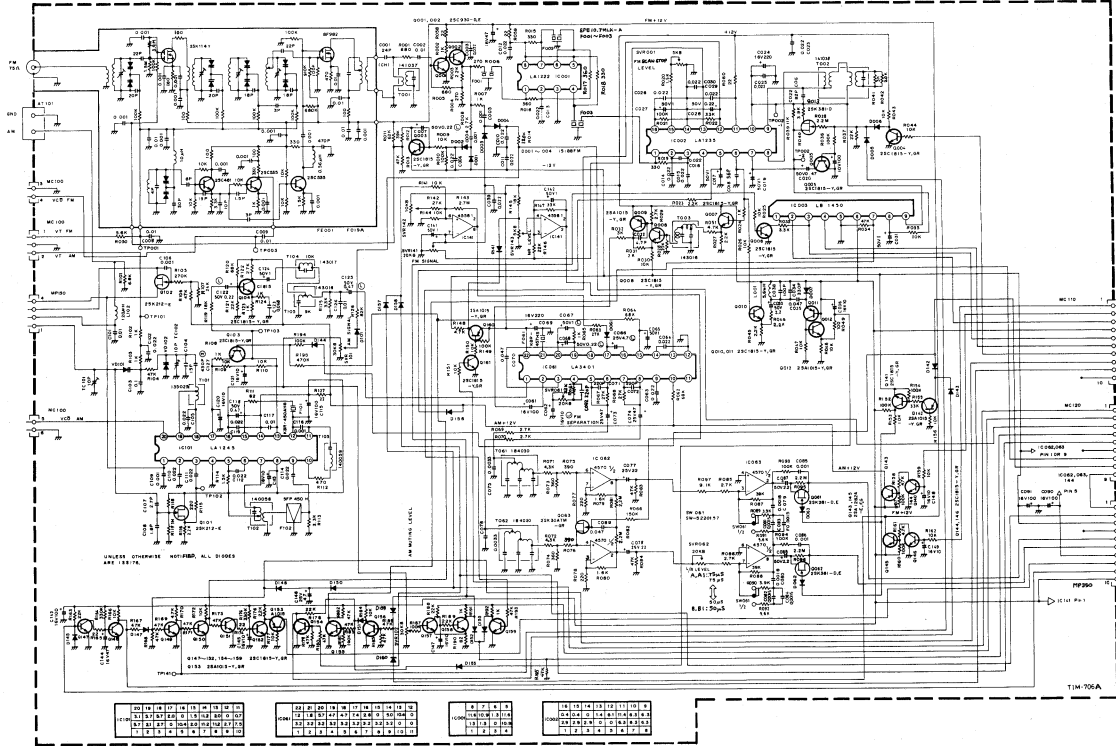
Power Switch (PW-PCB)

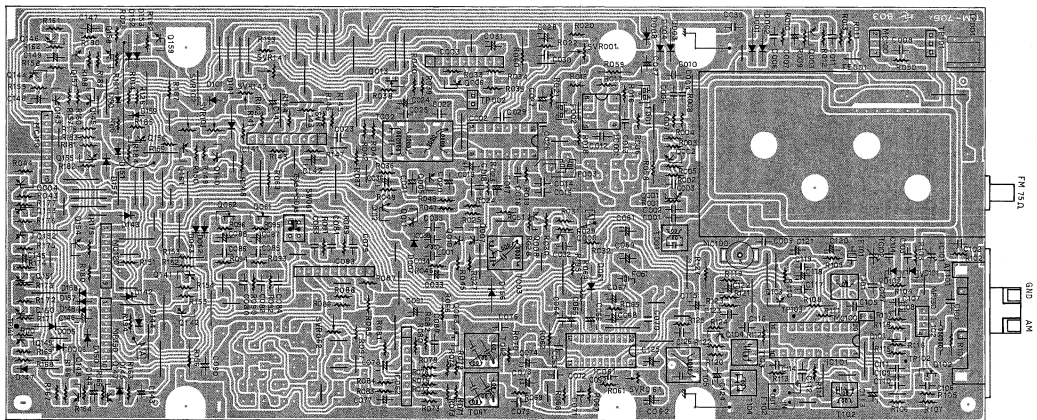


**Phono Input Jack (PJ-PCB)
(For C1 Version)**

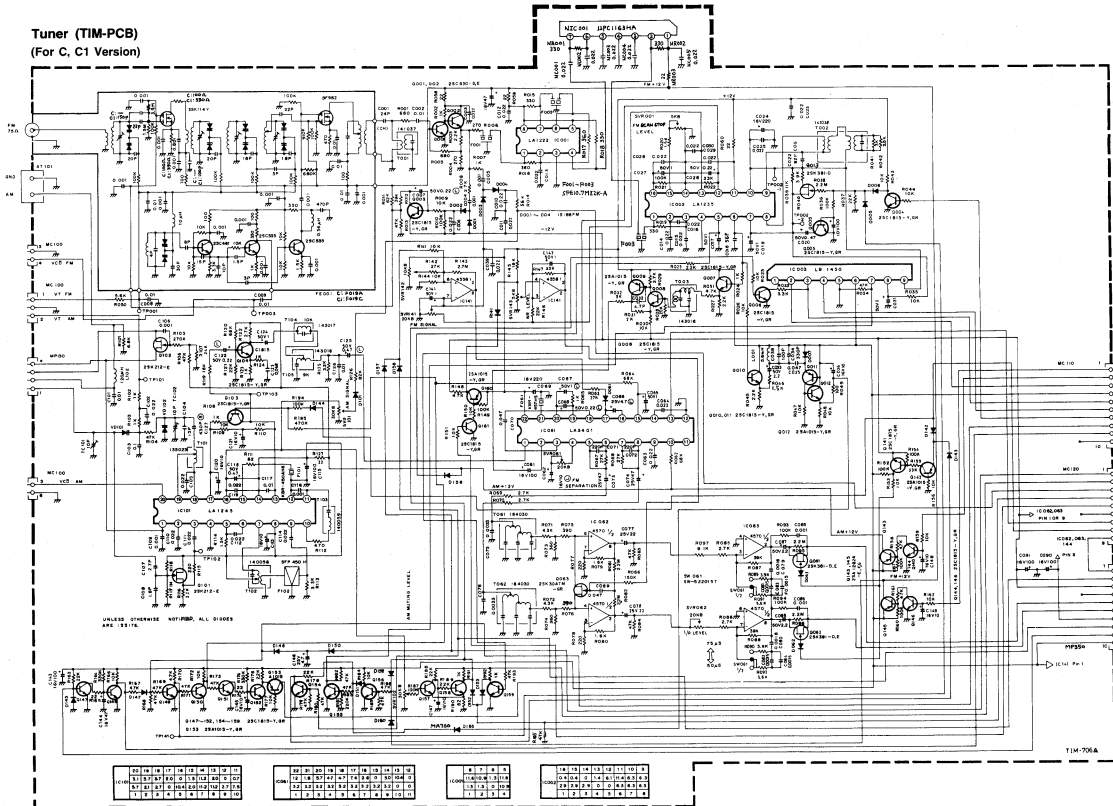


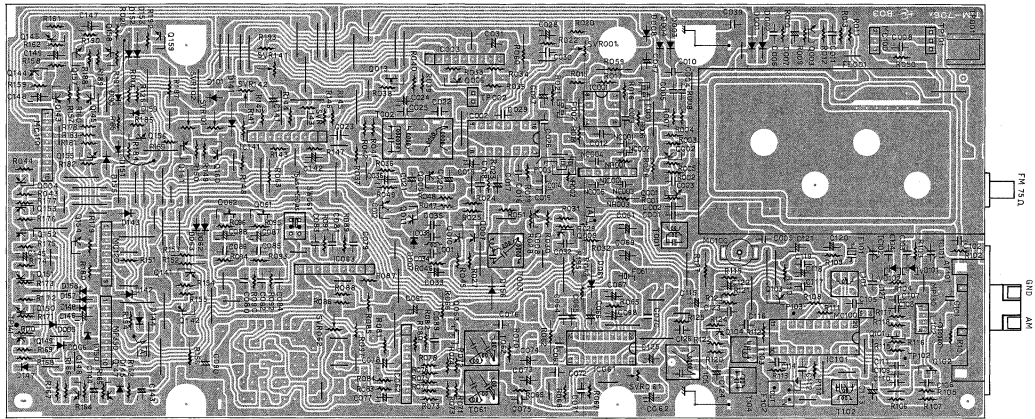
Tuner (TIM-PCB)
 (For A, A1, B, B1 Version)





**Tuner (TIM-PCB)
(For C, C1 Version)**

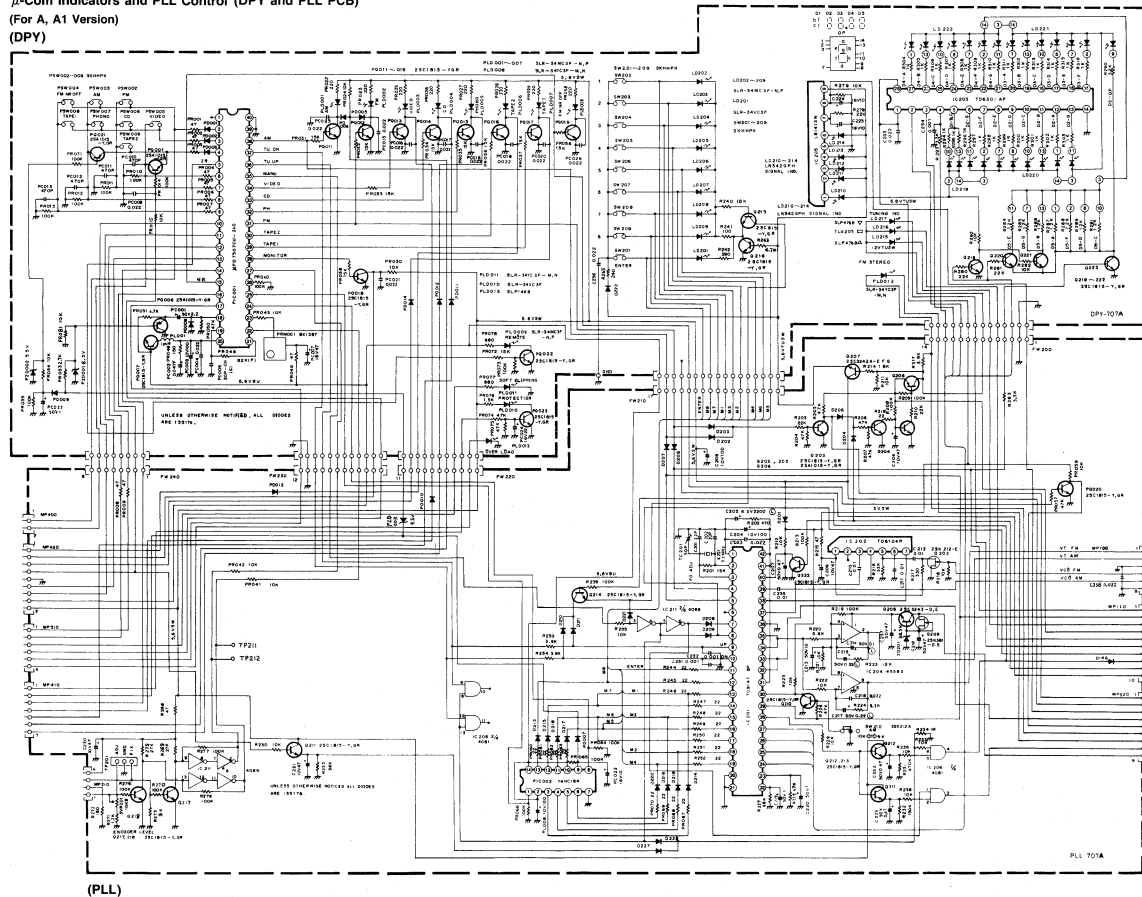




μ-Com Indicators and PLL Control (DPY and PLL PCB)

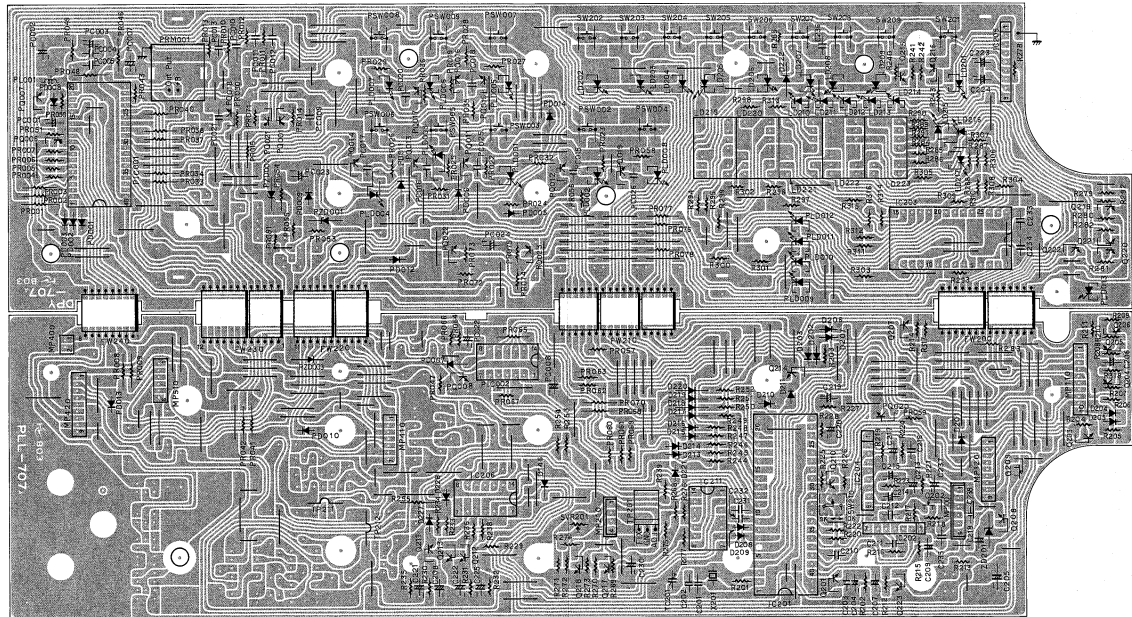
(For A, A1 Version)

(DPY)



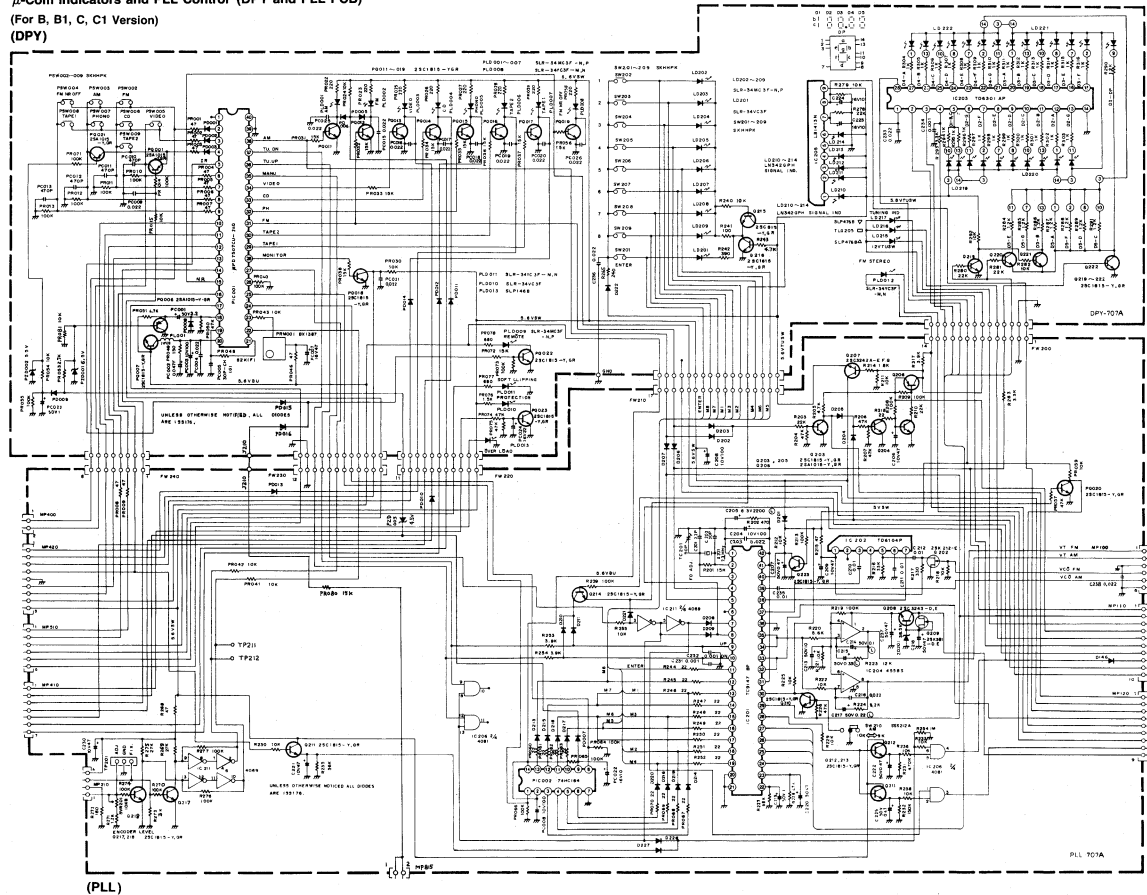
(PLL)

(DPY)



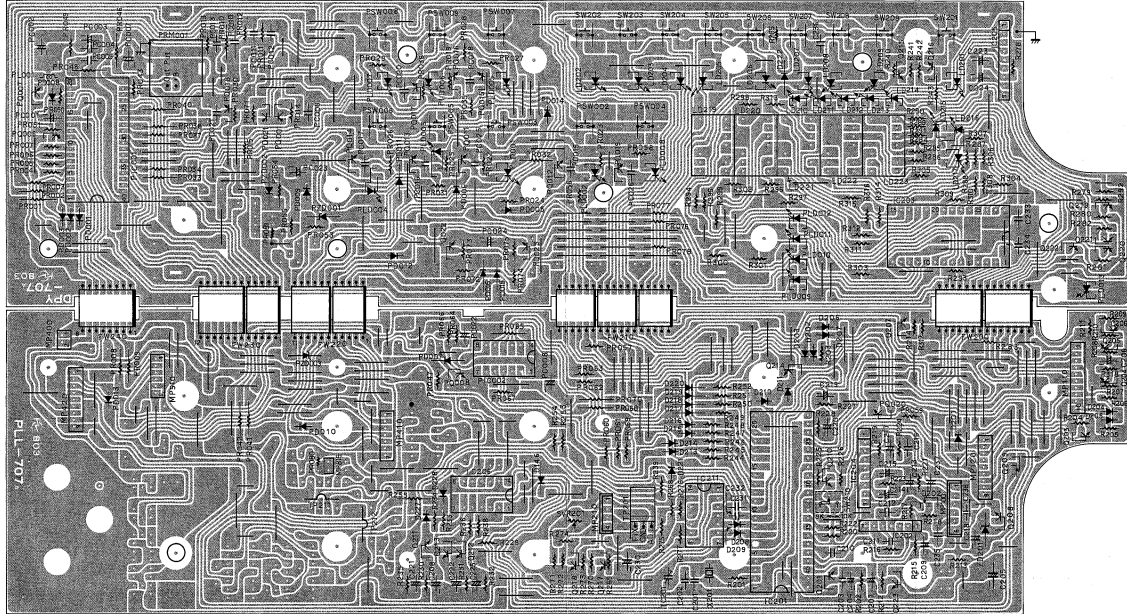
(PLL)

μ-Com Indicators and PLL Control (DPY and PLL PCB)
 (For B, B1, C, C1 Version)
 (DPY)



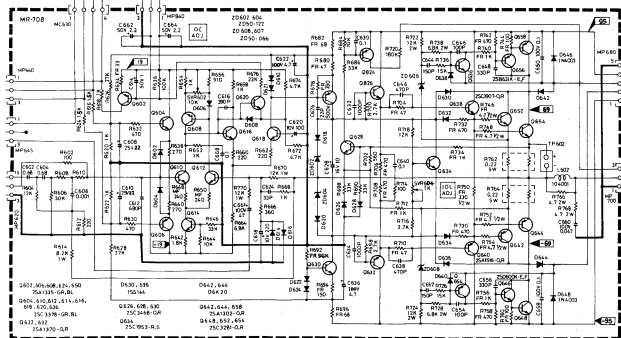
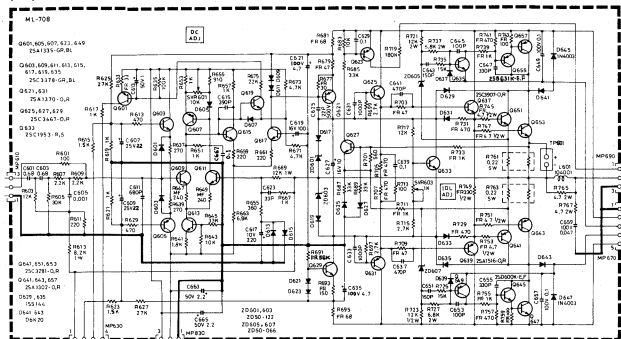
(PLL)

(DPY)



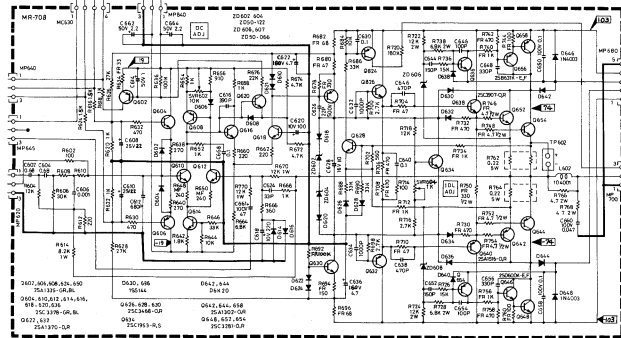
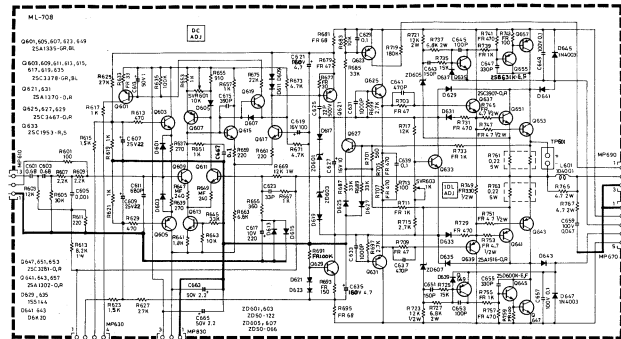
(PLL)

Main Amp L ch and R ch (ML and MR PCB)
(For A, A1 Version)
(ML)



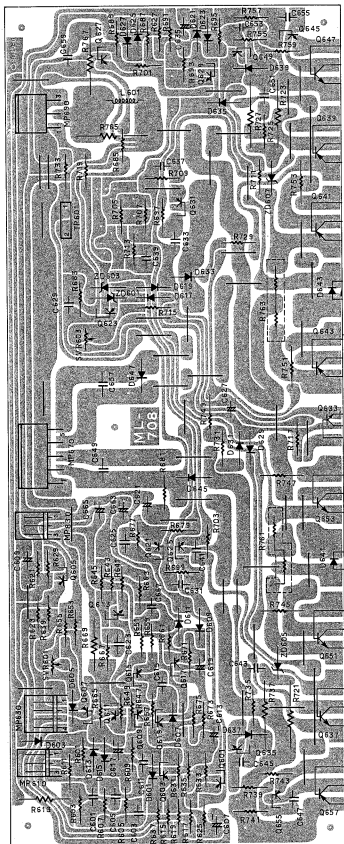
(MR)

(For B, B1, C, C1 Version)
(ML)

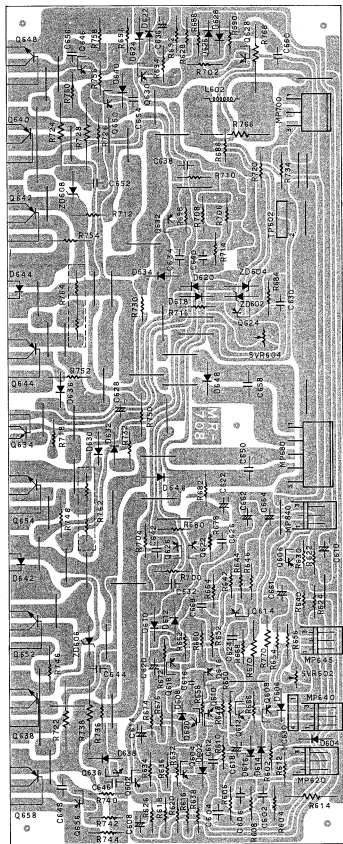


(MR)

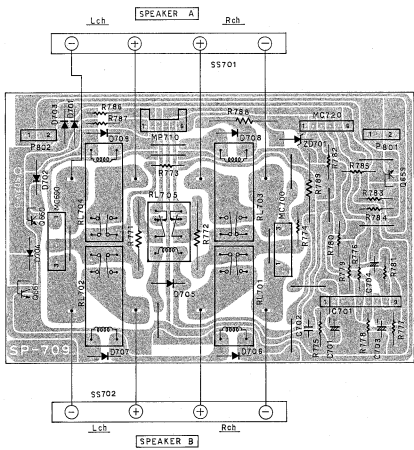
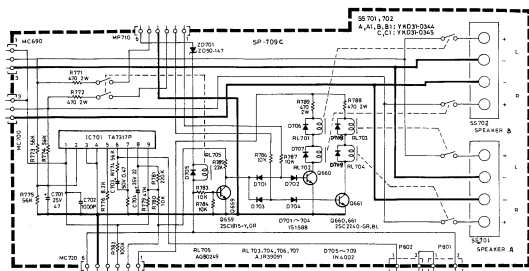
(ML)



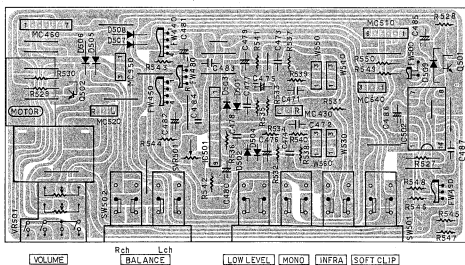
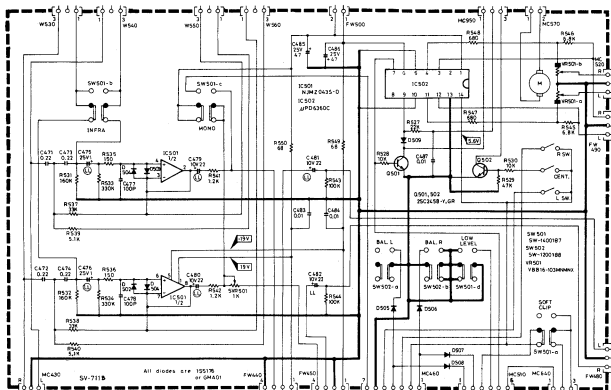
(MR)



Speaker Terminal (SP-PCB)



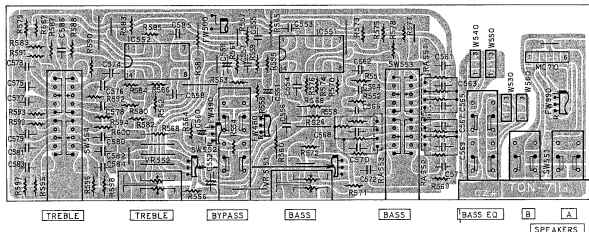
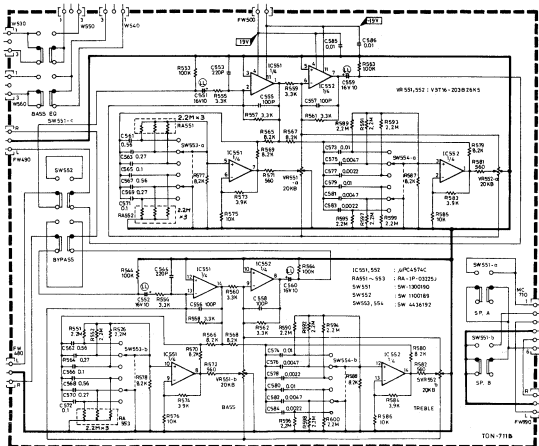
Audio Accessory (SV-PCB)



Indicators (LD-PCB)



Tone (TON-PCB)

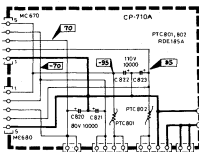


Headphone (HP-PCB)

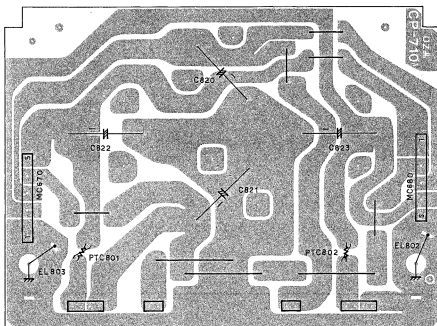
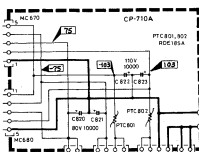


Filter Capacitor (CP-PCB)

(For A, A1 Version)

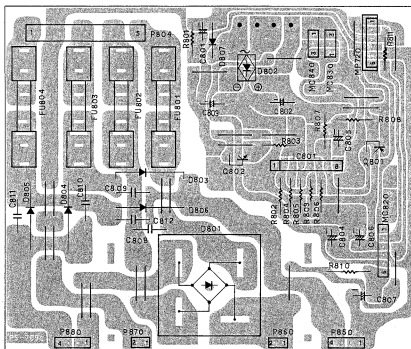
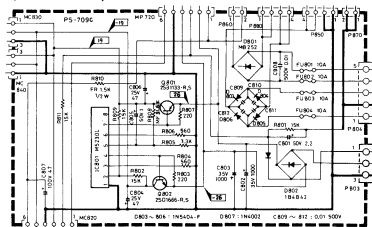


(For B, B1, C, C1 Version)

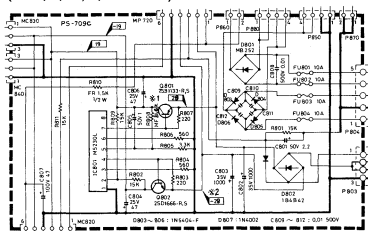


Main Power Supply (PS-PCB)

(For A1 Version)

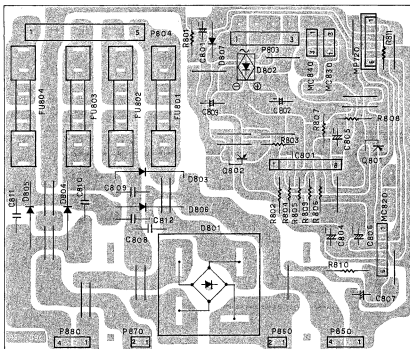


(For A, B, B1, C, C1 Version)

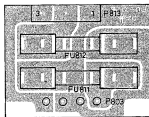


*1
A1 Version = 26
Other Version = 29

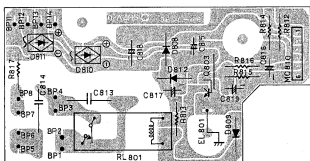
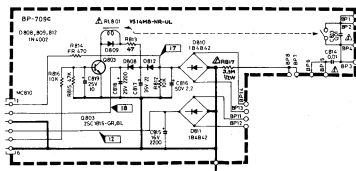
*2
A1 Version = -26
Other Version = -29



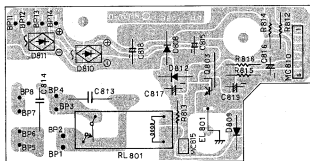
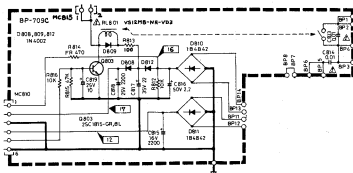
Fuse (FU-PCB)
(For A1, B, B1, C, C1 Version)



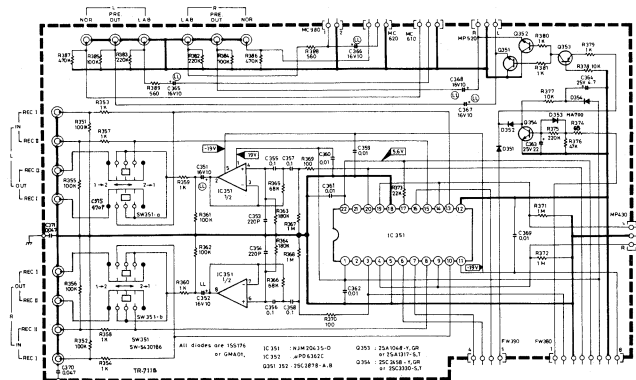
Back Up Power Supply (BP-PCB)
(For A, A1 Version)



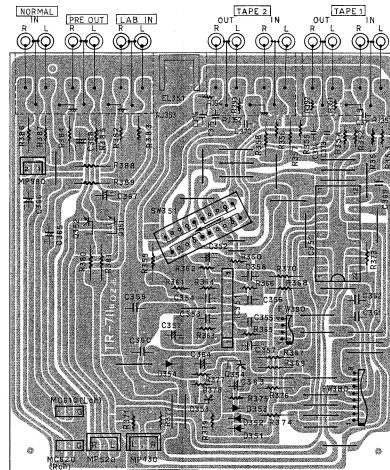
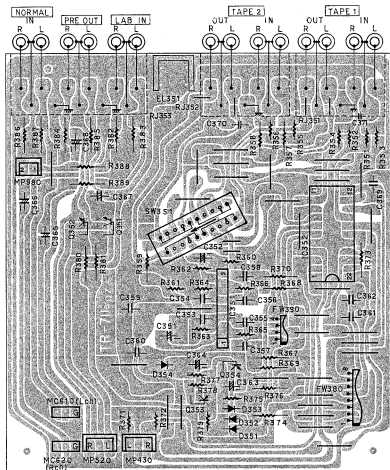
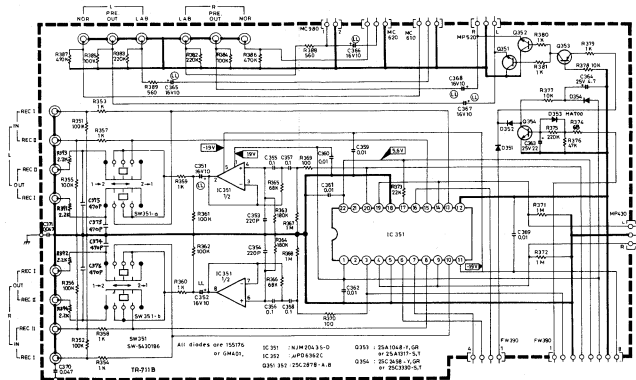
(For B, B1, C, C1 Version)



Tape Selector (TR-PCB)
 (For A, A1, B, B1, C Version)



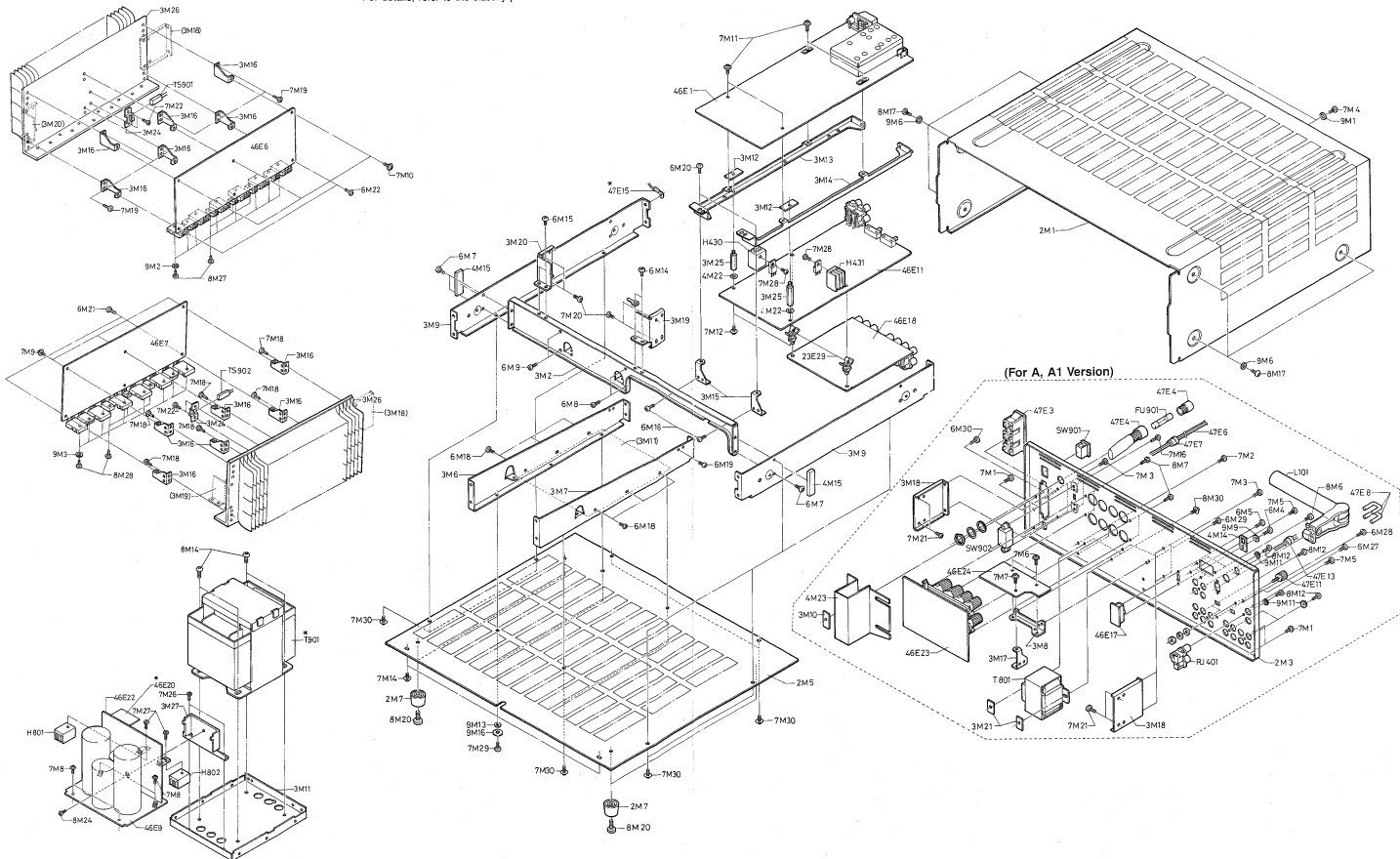
(For C1 Version)



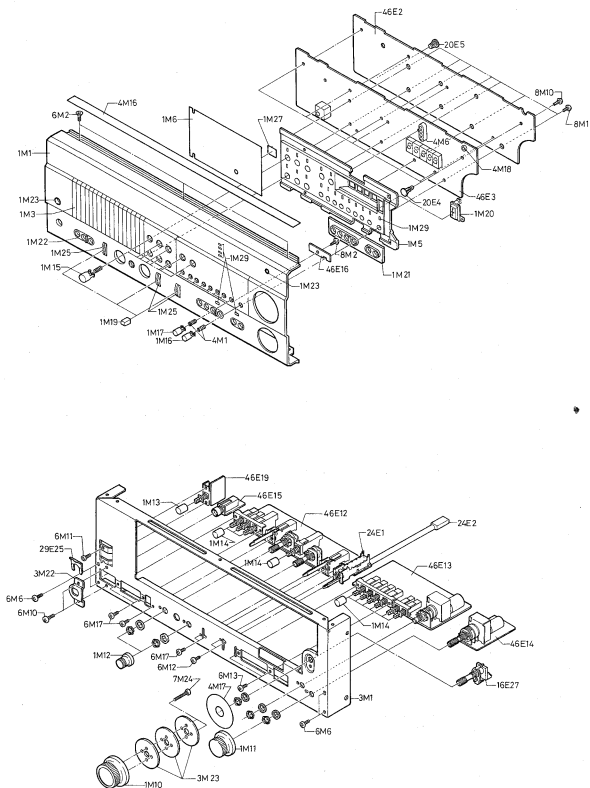
EXPLODED VIEW

Rear Panel and Chassis

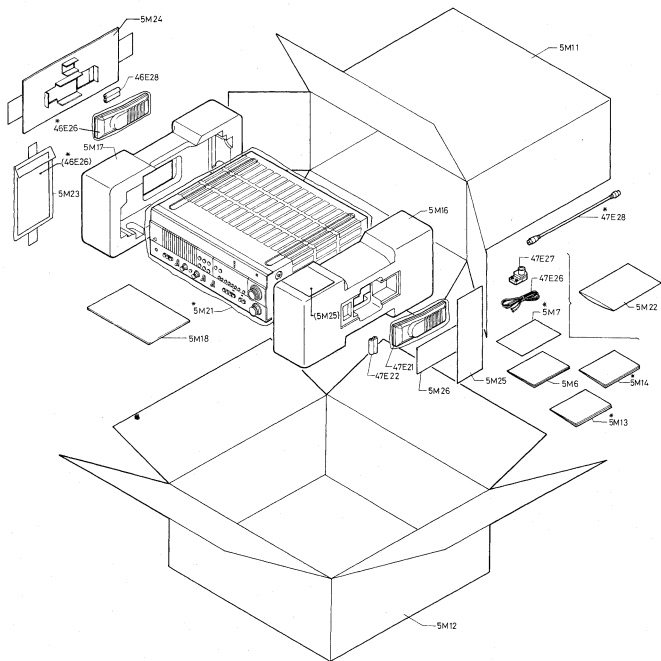
* Parts marked with * vary according to destinations.
For details, refer to the classify parts list.



Front Panel



Packing



PARTS LIST

● Parts marked with * vary according to destinations. For details, refer to the classify parts list.

TUNER PCB ASS'Y

REF. NO.	Q'TY	PART NO.	DESCRIPTION
P.C.B. BOARD			
40E	1	1IM-706A	PRINTED CIRCUIT BOARD
SEMICONDUCTORS			
D001-0004	4	1518RFH	DIODE
D005-0008	25	15517E	DIODE
061-063*			
101-141*			
145-147*			
148-150*			
153-156*			
160			
* 155			
0001-002	2	25C930NP-0+E	TRANSISTOR
0003-008	6	25C1815-Y+GR	TRANSISTOR
0009	1	25A1015-Y+GR	TRANSISTOR
0010	1	25C1815-Y+GR	TRANSISTOR
0011	1	25A1015-Y+GR	TRANSISTOR
0012	1	25C1815-Y+GR	TRANSISTOR
0013	1	25C381-D	TRANSISTOR
0601-062	2	25K381-0+E	TRANSISTOR
0603	1	25K3041M-GR	TRANSISTOR
2-0101-102	2	25C1815-Y+GR	TRANSISTOR
0103-104*	3	25C1815-Y+GR	TRANSISTOR
141			
0142	1	25A1015-Y+GR	TRANSISTOR
0143	1	25A1282A-E+FG	TRANSISTOR
0144	1	25C1815-Y+GR	TRANSISTOR
0145	1	25A1282A-E+FG	TRANSISTOR
0146-152	7	25C1815-Y+GR	TRANSISTOR
0153	1	25A1015-Y+GR	TRANSISTOR
0154-159	6	25C1815-Y+GR	TRANSISTOR
0160	1	25A1015-Y+GR	TRANSISTOR
0161	1	25C1815-Y+GR	TRANSISTOR
IC001	1	LA1222	IC
IC002	1	LA1235	IC
IC003	1	LA1450	IC
IC004	1	LA5401	IC
IC062-063	2	UPC4570HA	IC
IC101	1	LA1245	IC
IC141	1	HAJA5985	IC
VD101-102	2	KV1226-V	DIODE
CAPACITORS			
C001	1	HE405JCH240J	CERAMIC CAPACITOR
C002	1	EP05103N	CERAMIC CAPACITOR
C003	1	TP050F223Z	CERAMIC CAPACITOR
C004-005	2	UP050B102K	CERAMIC CAPACITOR
C006	1	TP050F223Z	CERAMIC CAPACITOR
C007	1	LL-50TWR22M	LOW LEAK. ELECTROLYTIC CAP.
C008	1	ECQB1H03JZ	METALLIZED FILM CAPACITOR
C009	1	TP125T100M	CERAMIC CAPACITOR
C010-016	7	TP050F223Z	CERAMIC CAPACITOR
C017	1	NS-50TWR0M	ELECTROLYTIC CAPACITOR
C018	1	UP050B156J2	CERAMIC CAPACITOR
C019	1	NS-50TMR0M	ELECTROLYTIC CAPACITOR
C020	1	NS-50TMR47M	ELECTROLYTIC CAPACITOR
C021	1	NS-10TMR1M	ELECTROLYTIC CAPACITOR
C022	1	FK16C001H020J	CERAMIC CAPACITOR
C023	1	TP050F223Z	CERAMIC CAPACITOR
C024	1	NS-16TWR21M	ELECTROLYTIC CAPACITOR
C025-026	2	TP050F223Z	CERAMIC CAPACITOR
C027	1	NS-50TMR0M	ELECTROLYTIC CAPACITOR
C028	1	NS-50TWR22M	ELECTROLYTIC CAPACITOR
C029-030	2	TP050F223Z	CERAMIC CAPACITOR
C031	1	NS-50TMR0M	ELECTROLYTIC CAPACITOR
C032	1	UP050S1487K	CERAMIC CAPACITOR
C033	1	NS-50TMR2M	ELECTROLYTIC CAPACITOR
C034	1	UP050B101K	CERAMIC CAPACITOR
C035	1	MY-50V047J3	MYLAR CAPACITOR
C036	1	NS-16TMR0M	ELECTROLYTIC CAPACITOR
C037	1	NS-16TMR47M	ELECTROLYTIC CAPACITOR
C038	1	NS-50V0331K	CERAMIC CAPACITOR
C039	1	TP050F223Z	CERAMIC CAPACITOR
C061	1	NS-16TMR10M	ELECTROLYTIC CAPACITOR
C062	1	LL-16TMR10M	LOW LEAK. ELECTROLYTIC CAP.
C063-064	2	TP050F223Z	CERAMIC CAPACITOR
C065	1	NS-50TMR0M	ELECTROLYTIC CAPACITOR
C066	1	LL-25TWR47M	LOW LEAK. ELECTROLYTIC CAP.
C067	1	LL-50TWR0M	LOW LEAK. ELECTROLYTIC CAP.
C068	1	LL-50TWR22M	LOW LEAK. ELECTROLYTIC CAP.
C069	1	NS-16TWR21M	ELECTROLYTIC CAPACITOR
C070	1	NS-50V047J3	CERAMIC CAPACITOR
C071-072	2	UP050B221K	CERAMIC CAPACITOR
C073-074	2	NS-25TMR47M	ELECTROLYTIC CAPACITOR
C075-076	2	MY-50V033J2	MYLAR CAPACITOR
C077-078	2	NS-25TMR47M	ELECTROLYTIC CAPACITOR
C079-080	2	MY-50V018J2	MYLAR CAPACITOR
C081-084	4	MY-50V015J2	MYLAR CAPACITOR
C085-086	2	NS-50V018J2	ELECTROLYTIC CAPACITOR
C087-088	2	NS-50TWR22M	ELECTROLYTIC CAPACITOR
C089	1	MY-50V047J3	MYLAR CAPACITOR
C090-091	2	NS-16TMR10M	ELECTROLYTIC CAPACITOR
* C092	1	UP050B221K	CERAMIC CAPACITOR
C101	1	ECQB1H03JZ	METALLIZED FILM CAPACITOR
C102	1	ECQV1H104JZ	METALLIZED FILM CAPACITOR
C103	1	ECQV1H104JZ	METALLIZED FILM CAPACITOR
C104	1	UP050S150J	CERAMIC CAPACITOR
C105	1	CP050F223Z	CERAMIC CAPACITOR
C106	1	UP050B102K	CERAMIC CAPACITOR
C107	1	UP050S127K	CERAMIC CAPACITOR

REF. NO.	Q'TY	PART NO.	DESCRIPTION
C108	1	UP050S180M	CERAMIC CAPACITOR
C109	1	UP050B102K	CERAMIC CAPACITOR
C110-112	3	TP050F233Z	CERAMIC CAPACITOR
C113	1	NS-16TMR10M	ELECTROLYTIC CAPACITOR
C114	1	NS-16TMR10M	ELECTROLYTIC CAPACITOR
C115	1	NS-16TMR10M	ELECTROLYTIC CAPACITOR
C116	1	UP050B102K	CERAMIC CAPACITOR
C117	1	EP050103M	CERAMIC CAPACITOR
C118	1	NS-50TWR47M	ELECTROLYTIC CAPACITOR
C119	1	TP050F223Z	CERAMIC CAPACITOR
C120-121	2	NS-16TMR10M	ELECTROLYTIC CAPACITOR
C122	1	LL-50TWR22M	LOW LEAK. ELECTROLYTIC CAP.
C123	1	MY-50V0608J	MYLAR CAPACITOR
C124	1	NS-50TMR0M	ELECTROLYTIC CAPACITOR
C125	1	LL-50TWR47M	LOW LEAK. ELECTROLYTIC CAP.
C126	1	ECQB1H03JZ	METALLIZED FILM CAPACITOR
C127	1	ST-50W531J	SYDROL CAPACITOR
C141-142	2	NS-50TMR0M	ELECTROLYTIC CAPACITOR
C143	1	NS-16TMR10M	ELECTROLYTIC CAPACITOR
C144	1	NS-16TMR70M	ELECTROLYTIC CAPACITOR
C145	1	NS-16TMR10M	ELECTROLYTIC CAPACITOR
C146	1	NS-25TWR47M	ELECTROLYTIC CAPACITOR
C147-149	3	NS-16TMR10M	ELECTROLYTIC CAPACITOR
TC101-102	2	CTC-6U-010	TRIMMER CAPACITOR
RESISTORS			
R001	1	KA165T6E1J	CARBON RESISTOR
R002	1	KA165T102J	CARBON RESISTOR
R003	1	KA165T22J	CARBON RESISTOR
R004	1	KA165T21J	CARBON RESISTOR
R005	1	KA165T6E1J	CARBON RESISTOR
R006	1	KA165T27J	CARBON RESISTOR
R007	1	KA165T102J	CARBON RESISTOR
R008	1	KA165T27J	CARBON RESISTOR
R009	1	KA165T103J	CARBON RESISTOR
R010	1	KA165T04J	CARBON RESISTOR
R011	1	KA165T62J	CARBON RESISTOR
R012	1	KA165T39J	CARBON RESISTOR
R013	1	KA165T13J	CARBON RESISTOR
* R014	1	KA165T124J	CARBON RESISTOR
R015	1	KA165T31J	CARBON RESISTOR
R016-017	2	KA165T102J	CARBON RESISTOR
R019-019	2	KA165T31J	CARBON RESISTOR
R020	1	KA165T152J	CARBON RESISTOR
R021	1	KA165T104J	CARBON RESISTOR
R022	1	KA165T33J	CARBON RESISTOR
R023	1	KA165T222J	CARBON RESISTOR
R024	1	KA165T102J	CARBON RESISTOR
* R025-026	2	KA165T103J	CARBON RESISTOR
R027	1	KA165T222J	CARBON RESISTOR
R028	1	KA165T203J	CARBON RESISTOR
R029	1	KA165T272J	CARBON RESISTOR
R030	1	KA165T103J	CARBON RESISTOR
R031	1	KA165T202J	CARBON RESISTOR
R032	1	KA165T302J	CARBON RESISTOR
R033	1	KA165T392J	CARBON RESISTOR
R034	1	KA165T103J	CARBON RESISTOR
R035	1	KA165T103J	CARBON RESISTOR
R036	1	KA165T104J	CARBON RESISTOR
* R037	1	KA165T25J	CARBON RESISTOR
R038	1	KA165T252J	CARBON RESISTOR
R039	1	KA165T113J	CARBON RESISTOR
R040	1	KA165T392J	CARBON RESISTOR
R041	1	KA165T82J	CARBON RESISTOR
R042	1	KA165T203J	CARBON RESISTOR
* R043-044	2	KA165T103J	CARBON RESISTOR
R045	1	KA165T222J	CARBON RESISTOR
* R046	1	KA165T222J	CARBON RESISTOR
R047-048	2	KA165T103J	CARBON RESISTOR
R049	1	KA165T104J	CARBON RESISTOR
R050	1	KA165T62J	CARBON RESISTOR
R051	1	KA165T472J	CARBON RESISTOR
R058-060	3	KA165T202J-LP	CARBON RESISTOR
* R061	1	KA165T225J	CARBON RESISTOR
R062	1	KA165T603J	CARBON RESISTOR
R063	1	KA165T273J	CARBON RESISTOR
R064	1	KA165T683J	CARBON RESISTOR
R065	1	KA165T102J	CARBON RESISTOR
R066	1	KA165T194J	CARBON RESISTOR
R067-068	2	KA165T273J	CARBON RESISTOR
R069-070	2	KA165T272J	CARBON RESISTOR
R071-072	2	KA165T472J	CARBON RESISTOR
R073-074	2	KA165T361J	CARBON RESISTOR
R075-076	2	KA165T391J	CARBON RESISTOR
R077-078	2	KA165T271J	CARBON RESISTOR
R079-080	2	KA165T102J	CARBON RESISTOR
R081-082	2	KA165T225J	CARBON RESISTOR
R083-084	2	KA165T473J	CARBON RESISTOR
R085-086	2	KA165T272J	CARBON RESISTOR
R087-088	2	KA165T393J	CARBON RESISTOR
R089-090	2	KA165T392J	CARBON RESISTOR
R091-092	2	KA165T102J	CARBON RESISTOR
R093-094	2	KA165T104J	CARBON RESISTOR
R095-096	2	KA165T225J	CARBON RESISTOR
R097	1	KA165T102J	CARBON RESISTOR
R101	1	KA50T602J	CARBON RESISTOR
R102-103	2	KA165T102J	CARBON RESISTOR
R104	1	KA165T473J	CARBON RESISTOR
R105	1	KA165T274J	CARBON RESISTOR
R106	1	KA165T473J	CARBON RESISTOR
R107	1	KA165T293J	CARBON RESISTOR
R108	1	KA165T102J	CARBON RESISTOR
R109-110	2	KA165T103J	CARBON RESISTOR

REF. NO.	QTY	PART NO.	DESCRIPTION
R111	1	KA15T820J	CARBON RESISTOR
R112	1	KA15T471J	CARBON RESISTOR
R113	1	KA15T352J	CARBON RESISTOR
R114	1	KA15T152J	CARBON RESISTOR
R115	1	KA15T221J	CARBON RESISTOR
R116	1	KA15T222J	CARBON RESISTOR
R117-118	2	KA15T105J	CARBON RESISTOR
R119	1	KA15T183J	CARBON RESISTOR
R120	1	KA15T683J	CARBON RESISTOR
R121	1	KA15T223J	CARBON RESISTOR
R122	1	KA15T272J	CARBON RESISTOR
R123-124	2	KA15T102J	CARBON RESISTOR
R125	1	KA15T352J	CARBON RESISTOR
R126	1	KA15T823J	CARBON RESISTOR
R127	1	KA25T220J-LP	CARBON RESISTOR
R141	1	KA15T103J	CARBON RESISTOR
R142	1	KA15T273J	CARBON RESISTOR
R143	1	KA15T275J	CARBON RESISTOR
R144	1	KA15T103J	CARBON RESISTOR
R145	1	KA15T183J	CARBON RESISTOR
R146	1	KA15T223J	CARBON RESISTOR
R147	1	KA15T353J	CARBON RESISTOR
R148	1	KA15T472J	CARBON RESISTOR
R149	1	KA15T104J	CARBON RESISTOR
R150-151	2	KA15T105J	CARBON RESISTOR
R152	1	KA15T104J	CARBON RESISTOR
R153	1	KA15T223J	CARBON RESISTOR
R154	1	KA15T104J	CARBON RESISTOR
R155	1	KA15T353J	CARBON RESISTOR
R156	1	KA15T103J	CARBON RESISTOR
R157	1	KA15T104J	CARBON RESISTOR
R158	1	KA15T272J	CARBON RESISTOR
R159	1	KA15T103J	CARBON RESISTOR
R160	1	KA15T104J	CARBON RESISTOR
R161	1	KA15T272J	CARBON RESISTOR
R162	1	KA15T103J	CARBON RESISTOR
R163	1	KA15T223J	CARBON RESISTOR
R164	1	KA15T354J	CARBON RESISTOR
R165	1	KA15T272J	CARBON RESISTOR
R166	1	KA15T103J	CARBON RESISTOR
R167-169	3	KA15T473J	CARBON RESISTOR
R170	1	KA15T472J	CARBON RESISTOR
R171	1	KA15T473J	CARBON RESISTOR
R172	1	KA15T103J	CARBON RESISTOR
R173	1	KA15T473J	CARBON RESISTOR
R174	1	KA15T220J	CARBON RESISTOR
R175	1	KA15T224J	CARBON RESISTOR
R176	1	KA15T222J	CARBON RESISTOR
R177	1	KA15T103J	CARBON RESISTOR
R178	1	KA15T223J	CARBON RESISTOR
R179-180	2	KA15T473J	CARBON RESISTOR
R181	1	KA15T104J	CARBON RESISTOR
R182-183	2	KA15T473J	CARBON RESISTOR
R184	1	KA15T103J	CARBON RESISTOR
R185-186	2	KA15T473J	CARBON RESISTOR
R187	1	KA15T104J	CARBON RESISTOR
R188-189	2	KA15T223J	CARBON RESISTOR
R190	1	KA15T272J	CARBON RESISTOR
R191-192	2	KA15T102J	CARBON RESISTOR
R193	1	KA15T473J	CARBON RESISTOR
R194	1	KA15T104J	CARBON RESISTOR
R195	1	KA15T474J	CARBON RESISTOR
R196	1	KA15T563J	CARBON RESISTOR
SVR001	1	SVR-06T38502	SEMI-VARIABLE
SVR061	1	SVR-06T38203CM	SEMI-VARIABLE RESISTOR
SVR062	1	SVR-06T38203	SEMI-VARIABLE
SVR101-102	2	SVR-06T38503	SEMI-VARIABLE
SVR141	1	SVR-06T38205	SEMI-VARIABLE
SVR142	1	SVR-06T38103	SEMI-VARIABLE
SVR143	1	SVR-06T38502	SEMI-VARIABLE
COILS			
L101	1	LHL06562J	INDUCTOR
L102	1	LAL03121K	INDUCTOR
T001	1	141037	FM IFT
T002	1	141038	FM DET COIL
T003	1	143016	FILTER COIL
T061-062	2	14B04703	FILTER INDUCTOR
T101	1	135025	HM OSC COIL
T102	1	140059	HM IFT
T103	1	140059	HM IFT
T104	1	143017	FILTER COIL
T105	1	143018	FILTER COIL
SWITCHES			
SW061	1	5M-5220157	SLIDE SWITCH
MISCELLANEOUS			
F001-003	3	3FE10.7MLK-A	10.7MHZ FILTER
F004	1	KBR-45795	CERAMIC FILTER 457KHZ
F101	1	KBR-450AHAB	CERAMIC FILTER
F102	1	SFP450H	CERAMIC FILTER
IE 2	1	1K198	GND LUG
IE 5	2	59951692	GND LUG
1W01	1	0975200005-J-J	SOLDER PLATED WIRE
1W50	1	0975200118-J-J	SOLDER PLATED WIRE
7E12	1	HL-504P5272-EF	CONNECTOR
9E19	1	NC06-031	MICRO SOCKET ASSY
9E20	1	HK09-624	MICRO SOCKET ASSY

REF. NO.	QTY	PART NO.	DESCRIPTION
9E21	1	HK10-625	MICRO SOCKET ASSY
AT101	1	PT-C02P01	TERMINAL 2P
*F0501	1	F019A	FRONT END
HP301	1	B10B-PH-K	CONNECTOR
TP002	1	1MSA-1008-02A	MINI TERMINAL PLATE
TP101	1	1MSA-1008-03A	MINI TERMINAL PLATE
TP102-103	3	ME-10160	TERMINAL PIN
141			
11E22	55	5E-T05	JUMP WIRE
11E23	44	4E-T05	JUMP WIRE

PLL CONTROL PCB ASSY

REF. NO.	QTY	PART NO.	DESCRIPTION
P.C. BOARD			
40E 2	1	PLL-707A	PRINTED CIRCUIT BOARD
SEMI-CONDUCTORS			
D146-201	23	15S176	DIODE
211-213			
221-227			
228			
Q201	1	25C1815-Y+GR	TRANSISTOR
Q202	1	25K212-E	TRANSISTOR
Q203-205	3	25C1815-Y+GR	TRANSISTOR
Q206	1	25A1815-Y+GR	TRANSISTOR
Q207	1	25C3242-A-E-F+G	TRANSISTOR
Q208	1	25C3243-D-E	TRANSISTOR
Q209	1	25K301-D+E	TRANSISTOR
Q210-214	8	25C1815-Y+GR	TRANSISTOR
217-218			
223			
IC201	1	TC91478P	IC
IC202	1	TD0194P	IC
IC204	1	NJM4595S	IC
IC206	1	LC40081B	IC
IC211	1	LC40690B	IC
P0007-010	3	15S176	DIODE
Q13			
P0008-020	2	25C1815-Y+GR	TRANSISTOR
ZD01	1	R039E-81	ZENER DIODE
PIC002	1	LC74HC164	IC
PZD003	1	ZD050-945	ZENER DIODE
CAPACITORS			
C201	1	UP050CH2R2K	CERAMIC CAPACITOR
C202	1	HE505JCH360J	CERAMIC CAPACITOR
C203	1	TP050F233Z	CERAMIC CAPACITOR
C204	1	NS-10T4101M	ELECTROLYTIC CAPACITOR
C205	1	LL-083T422MKF	LOW LEAK. ELECTROLYTIC CAP.
C206	1	NS-10T4707M	ELECTROLYTIC CAPACITOR
C207	1	NS-50T4047M	ELECTROLYTIC CAPACITOR
C208	1	NS-10T4101M	ELECTROLYTIC CAPACITOR
C209	1	NS-10T4707M	ELECTROLYTIC CAPACITOR
C210-212	3	EP050Y103N	CERAMIC CAPACITOR
C215	1	NS-50T1010M	ELECTROLYTIC CAPACITOR
C216	1	LL-50T4707M	LOW LEAK. ELECTROLYTIC CAP.
C217	1	LL-50T4707M	LOW LEAK. ELECTROLYTIC CAP.
C218	1	NS-50T4707M	ELECTROLYTIC CAPACITOR
C219-220	2	NS-50T4180M	ELECTROLYTIC CAPACITOR
C221	1	NS-10T4707M	ELECTROLYTIC CAPACITOR
C222-225	2	NS-50T4047M	ELECTROLYTIC CAPACITOR
C230	1	NS-10T4707M	ELECTROLYTIC CAPACITOR
C231-232	2	UP050H102K	CERAMIC CAPACITOR
C233	1	EP050Y103N	CERAMIC CAPACITOR
C237	1	NS-50T4707M	ELECTROLYTIC CAPACITOR
C238	1	TP050F223Z	CERAMIC CAPACITOR
PC008	1	NS-10T4101M	ELECTROLYTIC CAPACITOR
PC022	1	NS-14T1000M	ELECTROLYTIC CAPACITOR
TC201	1	CTC-6H-050	TRIMMER CAPACITOR
RESISTORS			
R201	1	KA165T153J	CARBON RESISTOR
R202	1	KA165T471J	CARBON RESISTOR
R203	1	KA165T223J	CARBON RESISTOR
R204	1	KA165T473J	CARBON RESISTOR
R205	1	KA165T472J	CARBON RESISTOR
R206-207	2	KA165T473J	CARBON RESISTOR
R208-209	2	KA165T104J	CARBON RESISTOR
R210	1	KA165T223J	CARBON RESISTOR
R211-212	2	KA165T103J	CARBON RESISTOR
R213	1	KA165T104J	CARBON RESISTOR
R214	1	KA165T192J	CARBON RESISTOR
R215	1	KA165T470J	CARBON RESISTOR
R216	1	KA165T353J	CARBON RESISTOR

REF. NO.	Q'TY	PART NO.	DESCRIPTION
R217	1	KAI657351J	CARBON RESISTOR
R218	1	KAI651103J	CARBON RESISTOR
R219	1	KAI651104J	CARBON RESISTOR
R220-222	3	KAI651103J	CARBON RESISTOR
R223	1	KAI651223J	CARBON RESISTOR
R224	1	KAI657022J	CARBON RESISTOR
R225	1	KAI651103J	CARBON RESISTOR
R226	1	KAI651473J	CARBON RESISTOR
R227	1	KAI657033J	CARBON RESISTOR
R228	1	KAI651473J	CARBON RESISTOR
R229+230	2	KAI651103J	CARBON RESISTOR
R231	1	KAI651474J	CARBON RESISTOR
R232	1	KAI651104J	CARBON RESISTOR
R233	1	KAI651103J	CARBON RESISTOR
R234	1	KAI651105J	CARBON RESISTOR
R235	1	KAI651563J	CARBON RESISTOR
R236+238	2	KAI651103J	CARBON RESISTOR
R239	1	KAI651104J	CARBON RESISTOR
R244-252	9	KAI657220J	CARBON RESISTOR
R253+254	2	KAI657322J	CARBON RESISTOR
R255	1	KAI651223J	CARBON RESISTOR
R268	1	KAI65470J	CARBON RESISTOR
R269	1	KAI65273J	CARBON RESISTOR
R270	1	KAI657104J	CARBON RESISTOR
R271	1	KAI651223J	CARBON RESISTOR
R272	1	KAI651101J	CARBON RESISTOR
R273	1	KAI657322J	CARBON RESISTOR
R274	1	KAI651104J	CARBON RESISTOR
R275	1	KAI657273J	CARBON RESISTOR
R276+277	2	KAI651104J	CARBON RESISTOR
R283	1	KAI65332J	CARBON RESISTOR
R317	1	KAI651102J	CARBON RESISTOR
R318	1	KAI65720J	CARBON RESISTOR
PR008+009	2	KAI65470J	CARBON RESISTOR
PR041+042	2	KAI651103J	CARBON RESISTOR
PR047	1	KAI651104J	CARBON RESISTOR
PR057	1	KAI65473J	CARBON RESISTOR
PR059	1	KAI651103J	CARBON RESISTOR
PR060-063	4	KAI657220J	CARBON RESISTOR
PR064-066	3	KAI651104J	CARBON RESISTOR
PR067-070	4	KAI65720J	CARBON RESISTOR
SWR201	1	RH0614C-103	SEMI-VARIABLE RESISTOR
SWITCHES			
SW210	1	555212A	SLIDE SWITCH
MISCELLANEOUS			
X201	1	HC10A07-20MHZ	QUARTZ OSCILLATOR UNIT
1W11	3	2HJ526806-J-J	S-LEAD, FLAT CABLE
1W13	3	2HJ526806-J-J	S-LEAD, FLAT CABLE
1W15	3	2HJ5267806-J-J	T-LEAD, FLAT CABLE
1W17	1	2HJ526806-J-J	S-LEAD, FLAT CABLE
NP100	1	808-EH-A	CONNECTOR
NP110	1	808-PH-K	CONNECTOR
NP120	1	808-PH-K	CONNECTOR
NP120	1	808-EH-A	CONNECTOR
NP400	1	878-PH-X	CONNECTOR
NP410	1	878-PH-K	CONNECTOR
NP420	1	808-PH-K	CONNECTOR
MP510	1	808-PH-X	CONNECTOR
TP201	1	171826-3	MICRO PLUG
20E 1	89	5E-705	JUMP WIRE
20E 2	30	4E-705	JUMP WIRE
20E 3	2	1PS-103A-3	JUMP WIRE

U - COM INDICATORS PCB ASS'Y

REF. NO.	Q'TY	PART NO.	DESCRIPTION
P.C. BOARD			
40E 3	1	DPY-707A	PRINTED CIRCUIT BOARD
SEMICONDUCTORS			
D222	1	155176	DIODE
Q215-216+219-222	6	25C1815-Y+GR	TRANSISTOR
IC203	1	1D6301AP	IC
IC205	1	1L8143N	IC
L0201	1	5L8-34VC3F	LED
L0202-209	8	5L8-34VC3F-N+P	LED
L0210-214	5	LN3426PH	LED
L0215	1	TL6209	LED
L0216	1	TL6209	LED
L0217	1	5LP4708	LED
L0219-223	5	LN5148A	LED
PD001+003+005+006+008+009	10	155176	DIODE
011+012+014			
PR001+006	2	25A1015-Y+GR	TRANSISTOR

REF. NO.	Q'TY	PART NO.	DESCRIPTION
PD007+011-019	10	25C1815-Y+GR	TRANSISTOR
PR021	1	25A1815-Y+GR	TRANSISTOR
PR022+023	2	25C1815-Y+GR	TRANSISTOR
1ZE10	1	Z050-066	ZENER DIODE, 1/2W, 6.6V
PI001	1	UPD7597CU-240	IC
PLD001+007	7	5L8-34VC3F-N+P	LED
PLD008	1	5L8-34VC3F-N+P	LED
PLD009	1	5L8-34VC3F-N+P	LED
PLD010	1	5L8-34VC3F	LED
PLD011+012	2	5L8-34VC3F-N+P	LED
PLD013	1	5LP1468	LED
PD2002	1	Z050-055	ZENER DIODE, 1/2W, 5.5V
CAPACITORS			
C223+224	2	57-16T100M	ELECTROLYTIC CAPACITOR
C235	1	1P050F2232	CERAMIC CAPACITOR
C234	1	1P050B1026	CERAMIC CAPACITOR
C236	1	1P050F232	CERAMIC CAPACITOR
PC001	1	57-50T2R2M	ELECTROLYTIC CAPACITOR
PC002	1	EECF90U473Z	GOLD CAPACITOR
PC003	1	57-10T4101M	ELECTROLYTIC CAPACITOR
PC004	1	1P050F2232	CERAMIC CAPACITOR
PC005	1	HE905JC1800G	CERAMIC CAPACITOR
PC007	1	57-10T4707M	ELECTROLYTIC CAPACITOR
PC009	1	1P050F2232	CERAMIC CAPACITOR
PC010-013	4	UP9008471K	CERAMIC CAPACITOR
PC015+021	7	1P050F2232	CERAMIC CAPACITOR
PC023	1	57-10T4707M	ELECTROLYTIC CAPACITOR
PC024	1	57-16T1222M	ELECTROLYTIC CAPACITOR
PC025+026	2	1P050F2232	CERAMIC CAPACITOR
RESISTORS			
R240	1	KAI657103J	CARBON RESISTOR
R241	1	KAI657101J	CARBON RESISTOR
R242	1	KAI65731J	CARBON RESISTOR
R243	1	KAI651472J	CARBON RESISTOR
R245	1	KAI65241J	CARBON RESISTOR
R270	1	KAI657223J	CARBON RESISTOR
R280+291	2	KAI651223J	CARBON RESISTOR
R282	1	KAI651103J	CARBON RESISTOR
R284+291	8	KAI651223J	CARBON RESISTOR
R292	1	KAI651103J	CARBON RESISTOR
R293	1	KAI65332J	CARBON RESISTOR
R294+316	23	KAI651102J	CARBON RESISTOR
PR001+007	7	KAI65470J	CARBON RESISTOR
PR010-014	5	KAI651104J	CARBON RESISTOR
PR015	1	KAI651103J	CARBON RESISTOR
PR022+023	2	KAI657221J	CARBON RESISTOR
PR024	1	KAI651103J	CARBON RESISTOR
PR025+029	5	KAI657221J	CARBON RESISTOR
PR030	1	KAI651103J	CARBON RESISTOR
PR031+038	8	KAI651533J	CARBON RESISTOR
PR040	1	KAI651104J	CARBON RESISTOR
PR043	1	KAI651103J	CARBON RESISTOR
PR046	1	KAI65470J	CARBON RESISTOR
PR048	1	HP2557023F	METAL FILM RESISTOR
PR049	1	KAI651101J	CARBON RESISTOR
PR050	1	KAI651473J	CARBON RESISTOR
PR051	1	KAI65472J	CARBON RESISTOR
PR053	1	KAI651222J	CARBON RESISTOR
PR054	1	KAI651103J	CARBON RESISTOR
PR055	1	KAI651104J	CARBON RESISTOR
PR056	1	KAI651533J	CARBON RESISTOR
PR058	1	KAI651221J	CARBON RESISTOR
PR071	1	KAI651104J	CARBON RESISTOR
PR072	1	KAI651533J	CARBON RESISTOR
PR073	1	KAI651104J	CARBON RESISTOR
PR074+075	2	KAI65473J	CARBON RESISTOR
PR076	1	KAI65152J	CARBON RESISTOR
PR077+078	2	KAI65708J	CARBON RESISTOR
PR081	1	KAI651103J	CARBON RESISTOR
COILS			
PL001	1	LA03102K	INDUCTOR
SWITCHES			
SW201+209	9	5KHHPK	TACT SWITCH
PSW002+009	8	5KHHPK	TACT SWITCH
MISCELLANEOUS			
AW 7	2	445089A	SIELD CUSHION
AW 8	3	444997	SIELD CUSHION
AW 9	21	N42597-4	WASHER
AW10	1	N42597-5	WASHER
AW11	7	N42597-7	WASHER
AW12	2	N42597-9	WASHER
AW13	2	N42597-4	WASHER
AW14	1	N44127-1	SHIELD PAPER
AW18	1	N45223	FC CUSHION
AW20	1	N45226	FC CUSHION
15E15	74	5E-705	JUMP WIRE
15E16	20	4E-705	JUMP WIRE
15E18	1	R-020-20	CABLE ASS'Y
PRN001	1	BX1387	REMOTE SIGNAL RECEIVING UNIT

MAIN AMP L CH PCB ASS'Y

REF. NO.	Q'TY	PART NO.	DESCRIPTION
P.C.B. BOARD			
46E 6	1	ML-708	PRINTED CIRCUIT BOARD
SEMICONDUCATORS			
D001+005+	14	151580	DIODE
805+607+			
809+611+			
815+615+			
817+619+			
821+623+			
825+627+			
D029	1	155144	DIODE
D031+635+	2	151580	DIODE
D035	1	155144	DIODE
D037+639+	2	151580	DIODE
D041+643+	2	D0420	DIODE
D045+647+	2	1N4005	DIODE
Q401	1	25A1355-GR	TRANSISTOR
Q403	1	25C3378-GR	TRANSISTOR
Q405+607	2	25A1355-GR	TRANSISTOR
Q409+611+	6	25C3378-GR	TRANSISTOR
815+615+			
817+619+			
Q421	1	25A1370-E+F	TRANSISTOR
Q423	1	25A1355-GR	TRANSISTOR
Q425+627+	3	25C377-E+F	TRANSISTOR
829			
Q431	1	25A1370-E+F	TRANSISTOR
Q433	1	25C1933-R+S	TRANSISTOR
Q435	1	25C3378-GR	TRANSISTOR
Q437	1	25C3907-R+D	TRANSISTOR
Q439	1	25A1514-R+D	TRANSISTOR
Q441+643+	2	25A1302-R+D	TRANSISTOR
Q445	1	25D0608-E+F	TRANSISTOR
Q447	1	25C3291-R+D	TRANSISTOR
Q449	1	25A1355-GR	TRANSISTOR
Q451+653+	2	25C3281-R+D	TRANSISTOR
Q455	1	25B031K-E+F	TRANSISTOR
Q457	1	25A1302-R+D	TRANSISTOR
Z0401+643	2	Z050-122	ZENER DIODE 1/2W+12.2V
Z0405+607	2	Z050-066	ZENER DIODE 1/2W, 6.6V
CAPACITORS			
C01+603	2	ECGV1H684JZ	METALLIZED FILM CAPACITOR
C05	1	MY-50VU102J	MYLAR CAPACITOR
C07+609	2	HE905JSL391K	ELECTROLYTIC CAPACITOR
C11	1	HE115JL060K	CERAMIC CAPACITOR
C13	1	MS-50VW100R	ELECTROLYTIC CAPACITOR
C15	1	HE905JSL391K	CERAMIC CAPACITOR
C17	1	MS-107W221M	ELECTROLYTIC CAPACITOR
C19	1	MS-167W101M	ELECTROLYTIC CAPACITOR
C21	1	HE107W187M	ELECTROLYTIC CAPACITOR
C23	1	HE905JSL330K	CERAMIC CAPACITOR
C25	1	HM605JSH220K	CERAMIC CAPACITOR
C27	1	MS-167W100R	ELECTROLYTIC CAPACITOR
C29	1	ECGV1H04JZ	METALLIZED FILM CAPACITOR
C31+633	2	HE905JYD102M	CERAMIC CAPACITOR
C33	1	MS107W187M	ELECTROLYTIC CAPACITOR
C35	1	HE905JSL471K	CERAMIC CAPACITOR
C39	1	ECGV1H04JZ	METALLIZED FILM CAPACITOR
C41	1	HE905JSL471K	CERAMIC CAPACITOR
C43	1	HE905JSL151K	CERAMIC CAPACITOR
C45	1	HE905JSL101K	CERAMIC CAPACITOR
C47	1	HE905JSL331K	CERAMIC CAPACITOR
C49	1	MY100V5104K-KF	MYLAR CAPACITOR
C51	1	HE905JSL151K	CERAMIC CAPACITOR
C53	1	HE905JSL101K	CERAMIC CAPACITOR
C55	1	HE905JSL331K	CERAMIC CAPACITOR
C57	1	MY100V5104K-KF	MYLAR CAPACITOR
C59	1	MY100V573K	MYLAR CAPACITOR
C63+665	2	MS-50V2R2R	ELECTROLYTIC CAPACITOR
C67	1	ECGV1H04JZ	METALLIZED FILM CAPACITOR
RESISTORS			
R001	1	KA255101J	CARBON RESISTOR
R003	1	KA255123J	CARBON RESISTOR
R005	1	KA255139J	CARBON RESISTOR
R007+609	2	KA255170J-LP	CARBON RESISTOR
R011	1	KA255122J	CARBON RESISTOR
R013	1	3A-1W1B22J-LP	METAL OXIDE RESISTOR
R015	1	KA255152J	CARBON RESISTOR
R017+619+	3	KA255102J	CARBON RESISTOR
621			
R023	1	KA255125J	CARBON RESISTOR
R25+627	2	KA255127J	CARBON RESISTOR
R29+631	2	KA255147J-LP	CARBON RESISTOR
R33	1	FR2551470J-LP	FLAME PROOF RESISTOR
R35	1	KA255104J	CARBON RESISTOR
R37+639	2	KA255127J-LP	CARBON RESISTOR
R41	1	KA255182J	CARBON RESISTOR
R43	1	KA255103J	CARBON RESISTOR
R45	1	KA255133J	CARBON RESISTOR
R47+649	2	MP251223J-LP	METAL OXIDE RESISTOR
R51+653+	2	KA255102J	CARBON RESISTOR
R55	1	KA255111J	CARBON RESISTOR
R57	1	KA255102J	CARBON RESISTOR
R59+661	2	KA255122J-LP	CARBON RESISTOR
R63	1	KA255182J	CARBON RESISTOR
R65	1	KA255136J-LP	CARBON RESISTOR
R67	1	KA255102J	CARBON RESISTOR
R69	1	3A-1W125J-LP	METAL OXIDE RESISTOR
R71+673	2	KA255147J	CARBON RESISTOR

REF. NO.	Q'TY	PART NO.	DESCRIPTION
R675	1	KA255123J	CARBON RESISTOR
R677	1	FR255133J-LP	FLAME PROOF RESISTOR
R679	1	FR2551470J-LP	FLAME PROOF RESISTOR
R681	1	FR2551680J-LP	FLAME PROOF RESISTOR
R683	1	KA255103J	CARBON RESISTOR
R685	1	KA255133J	CARBON RESISTOR
R687+689	2	FR255133J	FLAME PROOF RESISTOR
*R691	1	FR255156J	FLAME PROOF RESISTOR
R693	1	FR255151J-LP	FLAME PROOF RESISTOR
R695	1	FR2551680J-LP	FLAME PROOF RESISTOR
R697+699	2	FR255127J	FLAME PROOF RESISTOR
8701	1	KA255156J	CARBON RESISTOR
R703	1	FR2551470J-LP	FLAME PROOF RESISTOR
R705+707	2	FR2551471J-LP	FLAME PROOF RESISTOR
R709	1	FR2551470J-LP	FLAME PROOF RESISTOR
R711	1	FR255102J-LP	FLAME PROOF RESISTOR
R713	1	KA255101J	CARBON RESISTOR
R715	1	KA255127J-LP	CARBON RESISTOR
R717	1	KA255123J	CARBON RESISTOR
R719	1	KA255138J	CARBON RESISTOR
R721+723	2	3A-2W123J-LP	METAL OXIDE RESISTOR
R725	1	KA255135J	CARBON RESISTOR
R727	1	3A-2W102J-LP	METAL OXIDE RESISTOR
R729+731	2	FR2551471J-LP	FLAME PROOF RESISTOR
R733	1	FR255102J-LP	FLAME PROOF RESISTOR
R735	1	KA255155J	CARBON RESISTOR
R737	1	3A-2W102J-LP	METAL OXIDE RESISTOR
R739	1	FR255102J-LP	FLAME PROOF RESISTOR
R741	1	FR2551471J-LP	FLAME PROOF RESISTOR
R743	1	FR255101J-LP	FLAME PROOF RESISTOR
R745+747	2	FR5051487J-LP	FLAME PROOF RESISTOR
R749	1	FR505133J-LP	FLAME PROOF RESISTOR
R751+753	2	FR255101J-LP	FLAME PROOF RESISTOR
R755	1	FR255102J-LP	FLAME PROOF RESISTOR
R757	1	FR2551471J-LP	FLAME PROOF RESISTOR
R759	1	FR255101J-LP	FLAME PROOF RESISTOR
R761+763	2	MPC722R2KXZLF	CEMENT RESISTOR
R765+767	2	3A-2W147J-LP	METAL OXIDE RESISTOR
SVR601	1	SVR-0853810J	SEMI-VARIABLE RESISTOR
SVR603	1	SVR-08538102	SEMI-VARIABLE RESISTOR
COILS			
L001	1	104001	AIR-CORE COIL
MISCELLANEOUS			
MP610	1	53B-EH	CONNECTOR
MP630	1	54B-EH	CONNECTOR
MP650	1	53B-EH	CONNECTOR
MP670	1	835V-WH	CONNECTOR
MP690	1	835V-WH	CONNECTOR
TP601	1	WB-2	TERMINAL PIN
3E 3	6	AC 262	MICA
3E 6	2	AC 238	MICA
36E16	47	SE-T05	JUMP WIRE
36E17	2	PS-1041-9	JUMP WIRE

MAIN AMP R CH PCB ASS'Y

REF. NO.	Q'TY	PART NO.	DESCRIPTION
P.C.B. BOARD			
46E 7	1	MR-708	PRINTED CIRCUIT BOARD
SEMICONDUCATORS			
D002+004+	14	151580	DIODE
806+808+			
810+812+			
814+816+			
818+820+			
822+824+			
826+828			
D030	1	155144	DIODE
D032+634	2	151580	DIODE
D036	1	155144	DIODE
D038+640	2	151580	DIODE
D042+644	2	D0420	DIODE
D046+648	2	1N4005	DIODE
Q402	1	25A1355-GR	TRANSISTOR
Q404	1	25C3378-GR	TRANSISTOR
Q406+608	2	25A1355-GR	TRANSISTOR
Q410+612+	6	25C3378-GR	TRANSISTOR
814+816+			
818+820+			
Q422	1	25A1370-E+F	TRANSISTOR
Q424	1	25A1355-GR	TRANSISTOR
Q426+628	3	25C3467-E+F	TRANSISTOR
830			
Q432	1	25A1370-E+F	TRANSISTOR
Q434	1	25C1933-R+S	TRANSISTOR
Q436	1	25C3378-GR	TRANSISTOR
Q438	1	25C3907-R+D	TRANSISTOR
Q440	1	25A1514-R+D	TRANSISTOR
Q442+644	2	25A1302-R+D	TRANSISTOR
Q446	1	25D0608-E+F	TRANSISTOR
Q448	1	25C3291-R+D	TRANSISTOR
Q450	1	25A1355-GR	TRANSISTOR
Q452+654	2	25C3281-R+D	TRANSISTOR
Q456	1	25B031K-E+F	TRANSISTOR

REF. NO.	Q'TY	PART NO.	DESCRIPTION
0656	1	Z5A1302-R=0	TRANSISTOR
Z0602+004	2	Z050-122	ZENER DIODE 1/2Wx12-2V
Z0606+008	2	Z050-066	ZENER DIODE 1/2Wx 6.6V
CAPACITORS			
C092+004	2	ECQV1H084JZ	METALLIZED FILM CAPACITOR
C096	1	MY-50V102J	MYLAR CAPACITOR
C098+010	2	NS-25T102M	ELECTROLYTIC CAPACITOR
C112	1	H1E113SL081K	CERAMIC CAPACITOR
C614	1	NS-50T140R0	ELECTROLYTIC CAPACITOR
C616	1	HE905JSL391K	CERAMIC CAPACITOR
C618	1	NS-10T221M	ELECTROLYTIC CAPACITOR
C620	1	NS-10T1610M	ELECTROLYTIC CAPACITOR
C622	1	NS100T0407M	ELECTROLYTIC CAPACITOR
C624	1	HE405JSL330K	CERAMIC CAPACITOR
C626	1	HM605ZH220K	CERAMIC CAPACITOR
C628	1	NS-10T1810R0	ELECTROLYTIC CAPACITOR
C630	1	ECQV1H044JZ	METALLIZED FILM CAPACITOR
C632+634	2	HE405Y10102M	CERAMIC CAPACITOR
C636	1	NS100T0407M	ELECTROLYTIC CAPACITOR
C638	1	HE905JSL471K	CERAMIC CAPACITOR
C640	1	ECQV1H044JZ	METALLIZED FILM CAPACITOR
C642	1	HE905JSL471K	CERAMIC CAPACITOR
C644	1	HE605JSL151K	CERAMIC CAPACITOR
C646	1	HE905JSL101K	CERAMIC CAPACITOR
C648	1	HE905JSL331K	CERAMIC CAPACITOR
C650	1	NY100W5104K-KF	MYLAR CAPACITOR
C652	1	HE605JSL151K	CERAMIC CAPACITOR
C654	1	HE905JSL101K	CERAMIC CAPACITOR
C656	1	HE905JSL331K	CERAMIC CAPACITOR
C658	1	NY100W5104K-KF	MYLAR CAPACITOR
C660	1	NY45A475K	MYLAR CAPACITOR
C661	1	NS100T0479M-KF	ELECTROLYTIC CAPACITOR
C662+664	2	NS-50T02R2M	ELECTROLYTIC CAPACITOR
C668	1	ECQV1H044JZ	METALLIZED FILM CAPACITOR
RESISTORS			
R602	1	KA255T101J	CARBON RESISTOR
R604	1	KA255T123J	CARBON RESISTOR
R606	1	KA255T305J	CARBON RESISTOR
R608+610	2	KA255T222J	CARBON RESISTOR
R612	1	KA255T221J	CARBON RESISTOR
R614	1	FR255T102J-LP	CARBON RESISTOR
R616	1	KA255T152J	CARBON RESISTOR
R618+620+	3	KA255T101J	CARBON RESISTOR
622			
R624	1	KA255T102J	CARBON RESISTOR
R626+628	2	KA255T223J	CARBON RESISTOR
R630+632	2	KA255T151J	CARBON RESISTOR
R634	1	FR255T330J-LP	FLAME PROOF RESISTOR
R636	1	KA255T102J	CARBON RESISTOR
R638+640	2	KA255T221J	CARBON RESISTOR
R642	1	KA255T182J	CARBON RESISTOR
R644	1	KA255T103J	CARBON RESISTOR
R646	1	KA255T335J	CARBON RESISTOR
R648+650	2	MF255T241F	METAL OXIDE RESISTOR
R652+654	2	KA255T102J	CARBON RESISTOR
R656	1	KA255T911J	CARBON RESISTOR
R658	1	KA255T102J	CARBON RESISTOR
R660+662	2	KA255T221J	CARBON RESISTOR
R664	1	KA255T602J	CARBON RESISTOR
R666	1	KA255T361J	CARBON RESISTOR
R668	1	KA255T102J	CARBON RESISTOR
R670	1	SA-1W123J-LP	METAL OXIDE RESISTOR
R672+674	2	KA255T472J	CARBON RESISTOR
R676	1	KA255T223J	CARBON RESISTOR
R678	1	FR255T331J-LP	FLAME PROOF RESISTOR
R680	1	FR255T470J-LP	FLAME PROOF RESISTOR
R682	1	FR255T600J-LP	FLAME PROOF RESISTOR
R684	1	KA255T103J	CARBON RESISTOR
R686	1	KA255T335J	CARBON RESISTOR
R688+690	2	FR255T223J	FLAME PROOF RESISTOR
*R692	1	FR255T563J	FLAME PROOF RESISTOR
R694	1	FR255T151J-LP	FLAME PROOF RESISTOR
R696	1	FR255T600J-LP	FLAME PROOF RESISTOR
R698+700	2	FR255T221J	FLAME PROOF RESISTOR
702	1	KA255T961J	CARBON RESISTOR
704	1	FR255T470J-LP	FLAME PROOF RESISTOR
706+708	2	FR255T471J-LP	FLAME PROOF RESISTOR
710	1	FR255T470J-LP	FLAME PROOF RESISTOR
712	1	FR255T102J-LP	FLAME PROOF RESISTOR
714	1	KA255T101J	CARBON RESISTOR
716	1	KA255T222J	CARBON RESISTOR
718	1	FR255T123J	CARBON RESISTOR
720	1	KA255T184J	CARBON RESISTOR
722+724	2	SA-2W123J-LP	METAL OXIDE RESISTOR
726	1	KA255T102J	CARBON RESISTOR
728	1	SA-2W1682J-LP	METAL OXIDE RESISTOR
730+732	2	FR255T471J-LP	FLAME PROOF RESISTOR
734	1	FR255T102J-LP	FLAME PROOF RESISTOR
736	1	KA255T151J	CARBON RESISTOR
738	1	SA-2W1682J-LP	METAL OXIDE RESISTOR
740	1	FR255T102J-LP	FLAME PROOF RESISTOR
742	1	FR255T471J-LP	FLAME PROOF RESISTOR
744	1	FR255T101J-LP	FLAME PROOF RESISTOR
746+748	2	FR505T407J-LP	FLAME PROOF RESISTOR
750	1	FR505T331J-LP	FLAME PROOF RESISTOR
752+754	2	FR505T407J-LP	FLAME PROOF RESISTOR
756	1	FR255T102J-LP	FLAME PROOF RESISTOR
758	1	FR255T471J-LP	FLAME PROOF RESISTOR
760	1	FR255T101J-LP	FLAME PROOF RESISTOR
762+764	2	FR505T407J-LP	FLAME PROOF RESISTOR
766+768	2	SA-2W147J-LP	METAL OXIDE RESISTOR
770	1	SA-1W123J-LP	METAL OXIDE RESISTOR

REF. NO.	Q'TY	PART NO.	DESCRIPTION
5VR602	1	5VR-0853B103	SEMI-VARIABLE RESISTOR
5VR604	1	5VR-0853B102	SEMI-VARIABLE RESISTOR
COILS			
L002	1	1L04001	AIR-CORE COIL
MISCELLANEOUS			
MC630	1	MC04-606	MICRO SOCKET ASS'Y
MP020+606,	4	538-EH	CONNECTOR
645+609	1	B955-VH	CONNECTOR
MP700	1	B395-VH	CONNECTOR
TP602	1	WB-2	TERMINAL PIN
37E 3	6	AC262	MICA
37E 6	2	AC238	MICA
40E16	49	5E-T05	JUMP WIRE
40E17	2	1PS-1041-L9	JUMP WIRE

REF. NO.	Q'TY	PART NO.	DESCRIPTION
MAIN POWER SUPPLY PCB ASS'Y			
P.C. BOARD			
40E22	1	PS-709C	PRINTED CIRCUIT BOARD
SEMICONDUCTORS			
D001	1	HM252	DIODE
D002	1	104842	DIODE
D003+806	4	1N4004-F	DIODE
D007	1	1N4002	DIODE
R001	1	25B1133-R-V5	TRANSISTOR
R002	1	25D1606-R-V5	TRANSISTOR
IC801	1	MS236L	IC
CAPACITORS			
C001	1	NS-50TWR28M	ELECTROLYTIC CAPACITOR
C002+803	2	516-35T1W02MFK	ELECTROLYTIC CAPACITOR
C004	1	NS-25T4W70M	ELECTROLYTIC CAPACITOR
C005	1	NS-50T4W80M	ELECTROLYTIC CAPACITOR
C006	1	NS-25T4W70M	ELECTROLYTIC CAPACITOR
C007	1	NS100T0479M-KF	ELECTROLYTIC CAPACITOR
C008+012	5	HM55JY0183K	CERAMIC CAPACITOR
RESISTORS			
R001+802	2	KA255T153J	CARBON RESISTOR
R003	1	KA255T221J	CARBON RESISTOR
R004	1	KA255T561J	CARBON RESISTOR
R005	1	MF255T25F	METAL FILM RESISTOR
R006	1	KA255T561J	CARBON RESISTOR
R007	1	KA255T211J	CARBON RESISTOR
R008	1	MF255T162F	METAL FILM RESISTOR
R009	1	KA255T153J	CARBON RESISTOR
R010	1	FR505T152J-LP	FLAME PROOF RESISTOR
R011	1	KA255T153J	CARBON RESISTOR
MISCELLANEOUS			
*PB03	1	WB-3	TERMINAL PIN
PB04	1	WB-5	TERMINAL PIN
PB05	1	1MSA-1068-04D	MINI TERMINAL PLATE
PB06+870	2	1MSA-1068-02D	MINI TERMINAL PLATE
PB80	1	1MSA-1068-04D	MINI TERMINAL PLATE
FR801-804	4	FU-621034-312	FUSE
MC820	1	MC06-609	MICRO SOCKET ASS'Y
MC830	1	MC03-602	MICRO SOCKET ASS'Y
MC840	1	MC05-603	MICRO SOCKET ASS'Y
MP720	1	BAB-EH-A	CONNECTOR
*4E14	8	5-W5051	FUSE HOLDER
4E214	22	5E-T05	JUMP WIRE
SPEAKER TERMINAL PCB ASS'Y			
REF. NO.	Q'TY	PART NO.	DESCRIPTION
P.C. BOARD			
40E23	1	SP-709C	PRINTED CIRCUIT BOARD
SEMICONDUCTORS			
D701-709	4	531588	DIODE
0705-709	5	1N4002	DIODE
9659	1	25C1815-GR	TRANSISTOR
0646+661	2	25C2240-GR	TRANSISTOR
IC701	1	1A7317P	IC
D701	1	D050-147	ZENER DIODE 1/2Wx14.7V
CAPACITORS			
C701	1	NS-25T4W70M	ELECTROLYTIC CAPACITOR
C702	1	HE405JY0120M	CERAMIC CAPACITOR

REF. NO.	Q'TY	PART NO.	DESCRIPTION
C703	1	NS-50TW47H	ELECTROLYTIC CAPACITOR
C704	1	NS-25T4220M	ELECTROLYTIC CAPACITOR
RESISTORS			
R771-R772	2	5A-2W471J-LP	METAL OXIDE RESISTOR
R773-R775	3	KA2951563J	CARBON RESISTOR
R776	1	KA2951823J	CARBON RESISTOR
R777	1	KA2951333J	CARBON RESISTOR
R778	1	KA2951563J	CARBON RESISTOR
R779	1	KA2951473J	CARBON RESISTOR
R780	1	KA2951103J	CARBON RESISTOR
R781	1	KA2951224J	CARBON RESISTOR
R782	1	KA2951104J	CARBON RESISTOR
R783-R784	2	KA2951103J	CARBON RESISTOR
R785	1	KA2951223J	CARBON RESISTOR
R786-R787	2	KA2951103J	CARBON RESISTOR
R788-R789	2	5A-2W471J-LP	METAL OXIDE RESISTOR
MISCELLANEOUS			
P001-B02	2	WB-2	TERMINAL PIN
MC490-700	2	MA03-617	MICRO SOCKET ASS'Y
MC720	1	MC06-607	MICRO SOCKET ASS'Y
MP10	1	56B-PH-K	CONNECTOR
RL701-704	4	AJ839091	RELAY
RL705	1	AG80249	RELAY
* SS701-702	2	YK031-0344	SPEAKER SOCKET 4P
43E29	11	5E-T05	JUMP WIRE

BACK UP POWER SUPPLY PCB ASS'Y

REF. NO.	Q'TY	PART NO.	DESCRIPTION
P.C. BOARD			
46E24	1	BP-709C	PRINTED CIRCUIT BOARD
SEMICONDUCTORS			
980B-B09	2	1N4002	DIODE
980B-B11	2	18A842	DIODE
981	2	1N4002	DIODE
9803	1	25C1815-GR	TRANSISTOR
CAPACITORS			
* C813-B14	2	EC0U1A103MH	METALLIZED FILM CAPACITOR
C815	1	NS-161W222H-KF	ELECTROLYTIC CAPACITOR
C816	1	NS-501W100H	ELECTROLYTIC CAPACITOR
C817	1	NS-351W220H	ELECTROLYTIC CAPACITOR
C818	1	NS-951W222H-KF	ELECTROLYTIC CAPACITOR
C819	1	NS-251W100H	ELECTROLYTIC CAPACITOR
RESISTORS			
R812	1	KA2951103J	CARBON RESISTOR
* R813	1	KA2951470J	CARBON RESISTOR
R814	1	FQ2951471J-LP	FLAME PROOF RESISTOR
R815	1	KA2951473J	CARBON RESISTOR
R816	1	KA2951103J	CARBON RESISTOR
* R817	1	KA5091335J	CARBON RESISTOR
MISCELLANEOUS			
1W23	1	672520081R-C-D	SOLDER-PLATED WIRE
1W25	1	672520012B-C-D	SOLDER-PLATED WIRE
* 1W26	1	R-3Y16027	CABLE ASS'Y
* 1W20	1	R-3Y16122	CABLE ASS'Y
EL801	1	59851692	GND LUG
MC10	1	MC06-608	MICRO SOCKET ASS'Y
* RL801	1	V514MB-NR-UL	RELAY
45E24	1	5E-T05	JUMP WIRE

FILTER CAPACITOR PCB ASS'Y

REF. NO.	Q'TY	PART NO.	DESCRIPTION
P.C. BOARD			
44E 9	1	CP-710A	PRINTED CIRCUIT BOARD
CAPACITORS			
C820-B21	2	CB0103K70GH5	ELECTROLYTIC CAPACITOR
C822-B23	2	CB0103MH0GH6	ELECTROLYTIC CAPACITOR
MISCELLANEOUS			
EL802-B03	2	59851692	GND LUG
44E17	2	MA05-620	MICRO SOCKET ASS'Y
44E19	5	1PS-1034-3	JUMP WIRE
44E20	5	1PS-1041-9	JUMP WIRE
PTC81-B02	2	RD1815A	P.T.C

EQ FUNCTION SWITCH PCB ASS'Y

REF. NO.	Q'TY	PART NO.	DESCRIPTION
P.C. BOARD			
46E11	1	FE0-711B	PRINTED CIRCUIT BOARD
SEMICONDUCTORS			
0401-415	15	155176	DIODE
0401-402	2	25C3329-GR-BL	TRANSISTOR
0403-404	2	25A1316-GR-BL	TRANSISTOR
0405-406	2	25A1335-GR	TRANSISTOR
0407-408	2	25C3378-GR	TRANSISTOR
0409-412	4	25K170-GR-BL	TRANSISTOR
0413-414	2	25A1335-GR	TRANSISTOR
0415-416	2	25C3378-GR	TRANSISTOR
0417-420	4	25A1335-GR	TRANSISTOR
0421-422	2	25C3378-GR	TRANSISTOR
0423-424	2	25A1335-GR	TRANSISTOR
0425-426	2	25C2878-A-B	TRANSISTOR
0427	1	25D1666-R-5	TRANSISTOR
0429	1	25H1133-R-5	TRANSISTOR
0429	1	25A1282A-E-F	TRANSISTOR
0430-431	2	25H1133-R-5	TRANSISTOR
0432	1	25C2456-Y-GR	TRANSISTOR
0450	1	25C1815-Y-GR	TRANSISTOR
0451	1	25A1015-Y-GR	TRANSISTOR
IC401	1	UPD0362C	IC
IC402	1	181849	IC
IC403	1	1C4010	IC
IC404-A05	2	AN5237L	IC
IC406	1	AN7812F	IC
IC407	1	AN7912F	IC
Z0401-402	2	Z050-127	ZENER DIODE 1/2W+12.7V
Z0403-404	2	Z050-049	ZENER DIODE 1/2W+4.9V
CAPACITORS			
* C300-301	2	NS-50TW100H	ELECTROLYTIC CAPACITOR
C302	1	NS-16TW101M	ELECTROLYTIC CAPACITOR
C303-304	2	NS-50TW100H	ELECTROLYTIC CAPACITOR
C305	1	NS-16TW101M	ELECTROLYTIC CAPACITOR
C401-402	2	MY-50VU102J	MYLAR CAPACITOR
C403-404	2	HE705JFF103Z	CERAMIC CAPACITOR
* C405-406	2	HE135JF472Z	CERAMIC CAPACITOR
C407-412	6	NS403T471M	ELECTROLYTIC CAPACITOR
C413-416	4	HE405JSL561K	CERAMIC CAPACITOR
C417-418	2	NS403T471M	ELECTROLYTIC CAPACITOR
C419-420	2	NP-25TW100H	NON-POLAR ELECTROLYTIC
C421-422	2	HE505JSL101K	CERAMIC CAPACITOR
C423-424	2	HE705JSL221K	CERAMIC CAPACITOR
C425-426	2	HE505JSL101K	CERAMIC CAPACITOR
C427-428	2	NP-16TW100H	NON-POLAR ELECTROLYTIC CAP.
C429-430	2	NS-10TW221K	ELECTROLYTIC CAPACITOR
C431-432	2	MY-50VU752J	MYLAR CAPACITOR
C433-434	2	MY-50VU275J	MYLAR CAPACITOR
C435-436	2	MY-50VU222J	MYLAR CAPACITOR
C437-438	2	MY-50VU222J	MYLAR CAPACITOR
C439-440	2	NP-16TW100H	NON-POLAR ELECTROLYTIC CAP.
C441-442	2	HE705JFF103Z	CERAMIC CAPACITOR
C443-448	5	NS-25TW100H	ELECTROLYTIC CAPACITOR
C449-450	2	EC0V1H104JZ	METALLIZED FILM CAPACITOR
C451-452	2	NS-16TW101M	ELECTROLYTIC CAPACITOR
C453-456	4	NS-50TW222H	ELECTROLYTIC CAPACITOR
C457-458	2	HE705JFF103Z	CERAMIC CAPACITOR
C459	1	NS-16TW171H	ELECTROLYTIC CAPACITOR
C60	1	NS-10TW471M	ELECTROLYTIC CAPACITOR
C461-462	2	NS-50TW100H	ELECTROLYTIC CAPACITOR
C463-468	6	EC0V1H104JZ	METALLIZED FILM CAPACITOR
C469-466	2	HE705JFF103Z	CERAMIC CAPACITOR
C467	1	HE135JF475Z	CERAMIC CAPACITOR
C469	1	HE705JFF103Z	CERAMIC CAPACITOR
RESISTORS			
R401-402	2	KA205T100J	CARBON RESISTOR
R403-404	2	KA205T101J	CARBON RESISTOR
R405-406	2	KA165T204J	CARBON RESISTOR
R407-408	2	KA165T102J	CARBON RESISTOR
R409-410	2	KA165T224J	CARBON RESISTOR
R411-412	2	KA165T102J	CARBON RESISTOR
R413-416	4	HF165T135F	METAL FILM RESISTOR
R417-420	4	HF165T192F	METAL FILM RESISTOR
R421-422	2	KA205T600J	CARBON RESISTOR
R423-424	2	KA205T102J	CARBON RESISTOR
R427-428	2	KA205T131J	CARBON RESISTOR
R429-432	4	KA205T361J	CARBON RESISTOR
R433-436	4	KA205T104J	CARBON RESISTOR
R435-436	2	KA205T471J	CARBON RESISTOR
R437-438	2	KA165T472J	CARBON RESISTOR
R439-440	2	KA165T474J	CARBON RESISTOR
R441-442	2	KA165T563J	CARBON RESISTOR
R443-448	6	KA165T101J	CARBON RESISTOR
R449-450	2	KA165T101J	CARBON RESISTOR
R451-452	2	KA165T103J	CARBON RESISTOR
R453-454	2	KA165T124J	CARBON RESISTOR
R455-456	2	KA165T131J	CARBON RESISTOR
R457-458	2	KA165T181J	CARBON RESISTOR
R459-460	2	KA165T131J	CARBON RESISTOR
R461-462	2	KA165T103J	CARBON RESISTOR
R463-464	2	KA165T271J	CARBON RESISTOR
R465-468	4	KA165T101J	CARBON RESISTOR
R467-468	2	KA165T081J	CARBON RESISTOR
R469-470	2	KA165T333J	CARBON RESISTOR
R471-472	2	KA205T102J	CARBON RESISTOR
R473-474	2	KA165T221J	CARBON RESISTOR

REF. NO.	Q'TY	PART NO.	DESCRIPTION
R475+476	2	KAI65102J	CARBON RESISTOR
R477+478	2	KAI65104J	CARBON RESISTOR
R479+480	2	KAI65102J	CARBON RESISTOR
R481+483	5	KAI65104J	CARBON RESISTOR
R484	1	5A-1W101J-LP	METAL OXIDE RESISTOR
R485	1	KAI65122J	CARBON RESISTOR
R486	1	5A-1W101J-LP	METAL OXIDE RESISTOR
R487	1	KAI65122J	CARBON RESISTOR
R488+489	2	FMS05100J-LP	FLAME PROOF RESISTOR
R490+491	2	KAI65124J	CARBON RESISTOR
R492+493	2	KAI65103J	CARBON RESISTOR
R494+497	4	KAI65105J	CARBON RESISTOR
R498+499+	4	KAI65103J	CARBON RESISTOR
501+502			
R503+504	2	KAI65112J	CARBON RESISTOR
R505+506	2	KAI65105J	CARBON RESISTOR
R507+511	5	KAI65104J	CARBON RESISTOR
R512+513	2	KAI65103J	CARBON RESISTOR
R514	1	KAI65152J	CARBON RESISTOR
R515	1	KAI65175ZJ	CARBON RESISTOR
R516	1	MF165736F	METAL FILM RESISTOR
R517	1	MF165743F	METAL FILM RESISTOR
R518	1	KAI65174J	CARBON RESISTOR
R519	1	KAI65122J	CARBON RESISTOR
R520	1	KAI65156ZJ	CARBON RESISTOR
R521	1	KAI65103J	CARBON RESISTOR
R522	1	KAI65122J	CARBON RESISTOR
R523	1	KAI65174J	CARBON RESISTOR
R524	1	MF165735F	METAL FILM RESISTOR
R525	1	MF165743F	METAL FILM RESISTOR

COILS

L401+402 2 15-168-0-0 CHDKE COIL

SWITCHES

S401 1 5W-543210A SLIDE SWITCH
S402 1 5W-523210S SLIDE SWITCH

MISCELLANEOUS

1W 9 1 2HJ5264822-J-J 4-LEAD, FLAT CABLE
1W10 1 2HJ526810-J-J 4-LEAD, FLAT CABLE

*MC415 1 MZ0-635 CONNECTOR
*MC416 1 MZ0-636 CONNECTOR

MP460 1 B78-PH-K CONNECTOR
MP570 1 B4B-EH-A CONNECTOR
MP510+620 2 B4B-EH-A CONNECTOR
MP960 1 B4B-PH-K CONNECTOR

RJ402 1 T5858-AA RCA JACK 4P

30E26 1 MK09-627 MICRO SOCKET ASS'Y
30E27 1 MK10-628 MICRO SOCKET ASS'Y
30E30 1 MK10-626 MICRO SOCKET ASS'Y

32E16 45 5E-T05 JUMP WIRE
32E17 10 4E-T05 JUMP WIRE

TOPE PCB ASS'Y

REF. NO.	Q'TY	PART NO.	DESCRIPTION
P.C. BOARD			
40E12	1	TON-711B	PRINTED CIRCUIT BOARD
SEMICONDUCTORS			
1C551+552	2	UPC4574C	IC
CAPACITORS			
C501+552	2	LL-167W100N	LOW LEAK- ELECTROLYTIC CAP.
C553+554	1	UP0509201K	CERAMIC CAPACITOR
C555+558	4	HE405JSL560K	CERAMIC CAPACITOR
C559+560	2	LL-167W100N	LOW LEAK- ELECTROLYTIC CAP.
C561+562	2	EGCV1H274JZ	METALLIZED FILM CAPACITOR
C563+564	2	EGCV1H274JZ	METALLIZED FILM CAPACITOR
C565+566	2	EGCV1H104JZ	METALLIZED FILM CAPACITOR
C567+568	2	EGCV1H94JZ	METALLIZED FILM CAPACITOR
C569+570	2	EGCV1H274JZ	METALLIZED FILM CAPACITOR
C571+572	2	EGCV1H94JZ	METALLIZED FILM CAPACITOR
C573+574	2	NY-50VU103J	MYLAR CAPACITOR
C575+576	2	NY-50VU47ZJ	MYLAR CAPACITOR
C577+578	2	NY-50VU22J	MYLAR CAPACITOR
C579+580	2	NY-50VU103J	MYLAR CAPACITOR
C581+582	2	NY-50VU47ZJ	MYLAR CAPACITOR
C583+584	2	NY-50VU22J	MYLAR CAPACITOR
C585+586	2	HE705JF103Z	CERAMIC CAPACITOR
RESISTORS			
R526+551+552	3	KAI651225J	CARBON RESISTOR
R553+554	2	KAI65104J	CARBON RESISTOR
R555+562	8	KAI65135ZJ	CARBON RESISTOR
R563+564	2	KAI65104J	CARBON RESISTOR
R565+570	6	KAI65103J	CARBON RESISTOR
R571+572	2	KAI65156J	CARBON RESISTOR
R573+574	2	KAI65139ZJ	CARBON RESISTOR
R575+576	2	KAI65103J	CARBON RESISTOR
R577+580	4	KAI65182ZJ	CARBON RESISTOR
R581+582	2	KAI65156J	CARBON RESISTOR
R583+584	2	KAI65122J	CARBON RESISTOR
R585+586	2	KAI65103J	CARBON RESISTOR

REF. NO.	Q'TY	PART NO.	DESCRIPTION
R597+598	2	KAI65182ZJ	CARBON RESISTOR
R599+600	12	KAI651225J	CARBON RESISTOR
RA551-553	3	RA-IP-C3225J	BLOCK RESISTOR
VR551+552	2	VB16-203826K5	ROTARY POTENTIOMETER
SWITCHES			
S4551	1	5W-1300100	PUSH SWITCH
S4552	1	5W-1100190	PUSH SWITCH
S4553+554	2	5W-4436192	LEVER SWITCH
MISCELLANEOUS			
W500	1	C7916KW26GCGF	PCB CONNECTOR
W500	1	C7916KW25GCGF	PCB CONNECTOR
W560	1	C7916KW26GCGF	PCB CONNECTOR
1W 1	1	2HJ5262815AJJ	2-LEAD, FLAT CABLE
1W 3	1	2HJ526390A-J-J	3-LEAD, FLAT CABLE
1W 4	1	2HJ5263911-J-J	3-LEAD, FLAT CABLE
1W 5	1	2HJ5263910-J-J	3-LEAD, FLAT CABLE
1W 6	1	2HJ5263924-J-J	3-LEAD, FLAT CABLE
29E 6	8	5E-T05	JUMP WIRE
29E 7	7	4E-T05	JUMP WIRE
29E 9	1	MK06-621	MICRO SOCKET

AUDIO ACCESSORY PCB ASS'Y

REF. NO.	Q'TY	PART NO.	DESCRIPTION
P.C. BOARD			
40E13	1	5V-711B	PRINTED CIRCUIT BOARD
SEMICONDUCTORS			
D501+509	9	155176	DIODE
Q501+502	2	25C2458-Y+GR	TRANSISTOR
1C501	1	NJM20435-D	IC
1C502	1	UP06360C	IC
CAPACITORS			
C471+474	4	EGCV1H274JZ	METALLIZED FILM CAPACITOR
C475+476	2	LL-257W100M	LOW LEAK- ELECTROLYTIC CAP.
C477+478	2	HE505JSL101K	CERAMIC CAPACITOR
C479+482	4	LL-107W220H	LOW LEAK- ELECTROLYTIC CAP.
C483+484	2	HE705JF103Z	CERAMIC CAPACITOR
C485+486	2	NS-257W470H	ELECTROLYTIC CAPACITOR
C487	1	HE705JF103Z	CERAMIC CAPACITOR
RESISTORS			
R527	1	KAI65133AJ	CARBON RESISTOR
R527	1	KAI651223J	CARBON RESISTOR
R528	1	KAI65103J	CARBON RESISTOR
R529	1	KAI65174J	CARBON RESISTOR
R530	1	KAI65103J	CARBON RESISTOR
R531+532	2	KAI65164J	CARBON RESISTOR
R533+534	2	KAI65151AJ	CARBON RESISTOR
R535+536	2	KAI65151AJ	CARBON RESISTOR
R538	1	KAI65133AJ	CARBON RESISTOR
R539+540	2	KAI65151AJ	CARBON RESISTOR
R541+542	2	KAI65122J	CARBON RESISTOR
R543+544	2	KAI65104J	CARBON RESISTOR
R545+546	2	KAI65168ZJ	CARBON RESISTOR
R547+548	2	KAI65168J	CARBON RESISTOR
R549+550	2	F2955T680J-LP	FLAME PROOF RESISTOR
VR501	1	VB816-105MNXH	ROTARY POTENTIOMETER
VR501	1	5VR-06738102	SEMI-VARIABLE
SWITCHES			
S4501	1	5W-1400187	PUSH SWITCH
S4502	1	5W-1200188	PUSH SWITCH
MISCELLANEOUS			
1W 8	2	2HJ5264812-J-J	4-LEAD, FLAT CABLE
26E29	1	MK03-615	MICRO SOCKET ASS'Y
26E30	1	MK03-616	MICRO SOCKET ASS'Y
27E26	16	5E-T05	JUMP WIRE
27E27	3	4E-T05	JUMP WIRE
27E28	1	MK03-604	MICRO SOCKET ASS'Y
27E29	1	MK03-611	MICRO SOCKET ASS'Y
27E30	1	MK06-629	MICRO SOCKET ASS'Y
30E25	1	MK04-605	MICRO SOCKET ASS'Y
30E29	1	MK07-622	MICRO SOCKET ASS'Y

RAIN VOLUURE PCB ASS'Y

REF. NO.	Q'TY	PART NO.	DESCRIPTION
P.C. BOARD			
46E14	1	VR-711B	PRINTED CIRCUIT BOARD
SEMI CONDUCTORS			
IC961	1	NJM20435-D	IC
CAPACITORS			
C961+962	2	HE705JF103Z	CERAMIC CAPACITOR
RESISTORS			
R961	1	KA165T132J	CARBON RESISTOR
R962	1	KA165T081J	CARBON RESISTOR
VR961	1	VBV16-20392NK5	ROTARY POTENTIOMETER
MISCELLANEOUS			
24E 0	1	5E-T05	JUMP WIRE
30E29	1	MK06-623	MICRO SOCKET ASS'Y

HEADPHONE PCB ASS'Y

REF. NO.	Q'TY	PART NO.	DESCRIPTION
P.C. BOARD			
46E15	1	HP-711B	PRINTED CIRCUIT BOARD
MISCELLANEOUS			
HP951	1	HLJ0541-01-010	NIC JACK

INDICATORS PCB ASS'Y

REF. NO.	Q'TY	PART NO.	DESCRIPTION
P.C. BOARD			
46E16	1	LD-711B	PRINTED CIRCUIT BOARD
SEMI CONDUCTORS			
LD951	1	SLR-34YCF-M-N LED	
LD952	1	SLR-34MCF-M-NP LED	
RESISTORS			
R951+952	2	KA165T081J	CARBON RESISTOR
MISCELLANEOUS			
29E15	1	MK03-610	MICRO SOCKET ASS'Y

BRIDGING SWITCH PCB ASS'Y

REF. NO.	Q'TY	PART NO.	DESCRIPTION
P.C. BOARD			
46E17	1	BS-711B	PRINTED CIRCUIT BOARD
SWITCHES			
SW951	1	55B022	SLIDE SWITCH
MISCELLANEOUS			
29E19	1	MK02-601	MICRO SOCKET ASS'Y
29E20	1	MK03-618	MICRO SOCKET

TAPE SELECTOR PCB ASS'Y

REF. NO.	Q'TY	PART NO.	DESCRIPTION
P.C. BOARD			
46E18	1	TR-711B	PRINTED CIRCUIT BOARD
SEMI CONDUCTORS			
D351+352	2	155176	DIODE
D353	1	M4700	DIODE
D354	1	155176	DIODE
Q351+352	2	25C2878-A+B	TRANSISTOR
Q353	1	25A1048-Y+GR	TRANSISTOR
Q354	1	25C2458-Y+GR	TRANSISTOR
IC351	1	NJM20435-D	IC
IC352	1	UPD6362C	IC
CAPACITORS			
C351+352	2	LL-167M100M	LOW LEAK. ELECTROLYTIC CAP.
C353+354	2	HE705JSL221K	CERAMIC CAPACITOR
C355+358	4	ECGV1H104J2	METALLIZED FILM CAPACITOR
C359+362	4	HE705JF103Z	CERAMIC CAPACITOR
C363	1	NS-25T420W	ELECTROLYTIC CAPACITOR
C364	1	NS-25T470M	ELECTROLYTIC CAPACITOR
C365+368	4	LL-167M100M	LOW LEAK. ELECTROLYTIC CAP.
C369	1	HE705JF103Z	CERAMIC CAPACITOR
C370+371	2	HE355JF475Z	CERAMIC CAPACITOR

REF. NO.	Q'TY	PART NO.	DESCRIPTION
RESISTORS			
R351+352	2	KA165T104J	CARBON RESISTOR
R353+354	2	KA165T102J	CARBON RESISTOR
R355+356	2	KA165T104J	CARBON RESISTOR
R357+360	4	KA165T102J	CARBON RESISTOR
R361+362	2	KA165T104J	CARBON RESISTOR
R363+364	2	KA165T104J	CARBON RESISTOR
R365+366	2	KA165T083J	CARBON RESISTOR
R367+368	2	KA165T105J	CARBON RESISTOR
R369+370	2	KA165T101J	CARBON RESISTOR
R371+372	2	KA165T105J	CARBON RESISTOR
R373	1	KA165T223J	CARBON RESISTOR
R374	1	KA165T600J	CARBON RESISTOR
R375	1	KA165T224J	CARBON RESISTOR
R376	1	KA165T473J	CARBON RESISTOR
R377+378	2	KA165T103J	CARBON RESISTOR
R379+381	3	KA165T102J	CARBON RESISTOR
R382+383	2	KA165T224J	CARBON RESISTOR
R384+385	2	KA165T104J	CARBON RESISTOR
R386+387	2	KA165T474J	CARBON RESISTOR
R388+389	2	KA165T561J	CARBON RESISTOR
SWITCHES			
SW351	1	5W-5430186	SLIDE SWITCH
MISCELLANEOUS			
EL351	1	M169B	GND LUG
MP430+520	2	B50-EH-A	CONNECTOR
MP980	1	B70-EH-A	CONNECTOR
RJ351+352	2	T585-AA	RCA JACK 4P
RJ353	1	T5916-AAAA	RCA JACK 6P
25E20	31	5E-T05	JUMP WIRE
25E21	6	4E-T05	JUMP WIRE
25E24	1	MK03-612	MICRO SOCKET ASS'Y
25E25	1	MK03-613	MICRO SOCKET ASS'Y

POWER SWITCH PCB ASS'Y

REF. NO.	Q'TY	PART NO.	DESCRIPTION
P.C. BOARD			
46E19	1	PH-711B	PRINTED CIRCUIT BOARD
SWITCHES			
PS4001	1	5W-1100164	PUSH SWITCH
MISCELLANEOUS			
29E28	1	MK02-630	MICRO SOCKET ASS'Y

OTHER PARTS

REF. NO.	Q'TY	PART NO.	DESCRIPTION
MISCELLANEOUS			
1W20	2	0155200V25-D-E	SOLDER PLATED WIRE
*1W24	1	672520017-0-D	SOLDER PLATED WIRE
*1W27	1	6725200007-0-B	SOLDER PLATED WIRE
2W 7	2	GT-M04W15	GLASS TUBE
*2W10	1	U9-3/8B10	UL TYPE TUBE
2W11	1	U9-5/8B035	UL TYPE TUBE
2W12+W13	2	U9-4000B15	UL TYPE TUBE
4W 4	1	CT-M04R008	SHRINKABLE TUBE
4W21	23	N45092	TAPE+DOUBLE FACED
5W 1-M 3	5	N45335	LABEL+SERIAL NO.
5W 4	1	N45093	ANT CAUTION LABEL
*5W 5	1	N41939	LABEL+ FUSE
*5W 6	1	N44043	LABEL+ SA1945(LIGHTNING FLASH)
5W20	1	N45469	LABEL+POWER IND.
5W27	1	N45200	PROTECTION SHEET
*5W29	1	BK3035	SAFETY INSTRUCTION SHEET
*5W29	1	N44687A	CAUTION SHEET+POLARIZED PLUG
47E16+E17	15	8K-1	CORD CLAMP
47E18+E19	3	NO-5167	CORD CLAMP

FRONT PANEL

REF. NO.	Q'TY	PART NO.	DESCRIPTION
SWITCHES			
24E 1	1	5W-4X36185	LEVER SWITCH
24E 2	1	5WR20	REMOTE WIRE
MISCELLANEOUS			
1M 1	1	N214A8-1	FRONT PANEL
1M 3	1	N214A9A-1	FRONT GLASS
1M 5	1	N21450A	DISPLAY FRAME
1M 6	1	N44873	FRONT GLASS BACK SHEET
1M10	1	62-2320-1	TUNING KNOB 43
1M11	1	N44870-2	KNOB 33
1M12	2	KND6448-0226	KNOB 18 (POTENTIOMETER)
1M13	1	62-1111-1-0	PUSH BUTTON
1M14	10	62-1111-0-0	PUSH BUTTON
1M15	8	N44957-BK	PUSH BUTTON
1M16	1	N44908-RD	PUSH BUTTON
1M17	8	N44956-BK	PUSH BUTTON
1M19	3	KNB-0449A	LEVER KNOB
1M20	1	N31035	LED GUIDE
1M21	1	N45299	BUTTON GUIDE
1M22	1	SPA-0122	BUTTON GUIDE
1M23	2	62-3490-0-0	BUTTON FRAME
1M25	3	SPA-0124	LEVER KNOB GUIDE
1M27	1	N44877	FILTER
1M29	23	N44882A	LED CHIP
3M 1	1	N21452	FRONT CHASSIS
3M2	1	N44886	FITTINGS (HEADPHONE JACK)
3M23	3	N44887	FLYWHEEL
4M 1	17	N44959	KNOB SPRING
4M 6	1	N44880	LED SHIELD COVER
4M16	1	N44967-50	CABINET MAT
4M17	1	N45091	TUN KNOB COVER
4M18	1	N41940-3	SPACER
6M 2	3	T55-30X06-Y	TAP SCREW 5, FLAT HEAD, Y
6M 5+M10+M13+M17	18	T58-30X06-Y	TAP SCREW 5, BIND HEAD, Y
M22			
7M24	2	T88-30X16-Y	TAP SCREW 8, BIND HEAD, Y
9M 1+M 2	8	TPM-30X08-Y	TAP SCREW P, ROUND HEAD, Y
8M10	1	TPM-30X10-Y	TAP SCREW P, ROUND HEAD, Y
16E27	1	FSRA-5	ROTARY ENCODER
20E 4	6	KGL5-BRT	SPACER
20E 5	1	KGPS-BR	SPACER
29E25	1	MT41-0105	SNAP PLATE

REAR PANEL AND CHASSIS

REF. NO.	Q'TY	PART NO.	DESCRIPTION
COLLS			
L101	1	122043	LOOPSTICK ANT.
*T901	1	NPT-23345	POWER TRANSFORMER
*T901	1	NPT-23245	POWER TRANSFORMER
SWITCHES			
5W901	1	EST-2011B	POWER SWITCH
5W902	1	5W-520179	SWITCH
MISCELLANEOUS			
H430+431+801+802	4	OSH-1625-HP	HEAT SINK
2M 1	1	N21451	CABINET
*2M 3	1	N16444-1A	REAR PANEL
2M 5	1	N30951A	BOTTOM BOARD
2M 7	4	ND-7103-UL	FOOT
3M 2	1	N21456	FRONT SUB CHASSIS
3M 6	1	N30959	CENTER CHASSIS L
3M 7	1	N30960	CENTER CHASSIS R
3M 8	1	N44605	FITTINGS (HEAT SINK)
3M 9	2	N21455	SIDE CHASSIS
3M10	1	N44523	FITTINGS (P.T.)
3M11	1	N30999	SUPPORT CHASSIS (P.T.)
3M12	2	N44523	FITTINGS (P.T.)
3M13	1	N30729C	ANGLE L (P.C.-B)
3M14	1	N30734C	ANGLE R (P.C.-B)
3M15+M17	15	N44881	FITTINGS (P.C.-B)

REF. NO.	Q'TY	PART NO.	DESCRIPTION
3M18	2	N44883	FITTINGS R (HEAT SINK)
3M19	1	N44885	FITTINGS FR (HEAT SINK)
3M20	1	N44884	FITTINGS FL (HEAT SINK)
3M21	2	N44523	FITTINGS (P.T.)
3M24	2	N4222	FITTINGS (THERMAL RELAY)
3M25	2	N44550	STUD 30
3M26	2	N21457	HEAT SINK
3M27	1	N44254C	HEAT SINK
4M14	1	N44230-1	LOCK PLATE
4M15	2	N44996	SPACER
4M19	2	N4203-30	PLATE
4M22	2	N41946A-50-1	WASHER
*4M23	1	N45182	TERMINAL COVER
6M 4+M 5	2	T58-26X05-B	TAP SCREW 5, BIND HEAD, B
6M 7+M 9+	25	T58-30X06-Y	TAP SCREW 5, BIND HEAD, Y
M14+M14+M18+M21			
6M27+M30	5	T58-30X06-B	TAP SCREW 5, BIND HEAD, B
7M 1+M 5	16	T58-30X06-B	TAP SCREW 5, BIND HEAD, B
7M 6+M12	19	T5C-30X06-Y	TAP SCREW 5, WASHER FACED, Y
M14	2	T5C-30X06-B	TAP SCREW 5, WASHER FACED, B
7M10	2	T88-26X08-B	TAP SCREW 8, BIND HEAD, B
7M18+M22	24	T88-30X08-Y	TAP SCREW 8, BIND HEAD, Y
7M26+M30	17	T88-30X08-B	TAP SCREW 8, BIND HEAD, B
3M 6+M 7	6	TPM-30X08-B	TAP SCREW P, ROUND HEAD, B
4M12	2	TPM-30X10-B	TAP SCREW P, ROUND HEAD, B
4M14	4	T5C-40X08-Y	TAP SCREW 5, WASHER FACED, Y
4M17	6	T50-40X08-B	TAP SCREW 5, BIND HEAD, B
3M20	4	Z8-STR40X14-2Y	TAP SCREW, BIND HEAD, Y
8M24	1	ZC-STR30X18-2Y	TAP SCREW, WASHER FACED
8M27+M28	22	T88-30X12-Y	TAP SCREW 8, BIND HEAD, Y
9M30	2	T5C-30X08-B	TAP SCREW 5, WASHER FACED, B
9M 1+M 3	19	2AKX830-05-B	PLAIN WASHER, B
9M 6	6	2AKX840-05-B	PLAIN WASHER, B
9M 9	1	2AKX826-05-B	PLAIN WASHER, B
9M11	4	2TWX30-B	TOOTHED WASHER (B, BLACK)
9M13	1	2AKX8730-10-B	PLAIN WASHER, B
9M16	1	2AKX1230-08-B	PLAIN WASHER, B
*FU901	1	FU-621034-314	FUSE
*RJ401	1	T5880-AAAA	RCA JACK 2P
T5901+902	2	U12-10005-280A	THERMAL RELAY
23E29	2	KGL5-10RT	SPACER
*4E 3	1	AC-T01FB33	AC OUTLET
*4E 4	1	PH-032C	FUSE HOLDER
*4E 6	1	ACC-02205-4EE1	LINE CORD
*4E 7	1	SR-4N-4	CORD STOPPER
4E 8	2	P2170	SHORT PIN
4E11	1	US-0229-1	GROUND TERMINAL
4E13	1	SR-4N-4	CORD STOPPER

PACKING

REF. NO.	Q'TY	PART NO.	DESCRIPTION
MISCELLANEOUS			
5M 6	1	UM-657B	INSTRUCTION MANUAL
*5M 7	1	N40-4C2A	CARD/WARRANTY REGISTRATION
5M11	1	N21501A	SHIPPING CARTON
5M12	1	N21502B	OUTER CARTON
5M16	1	N21459-R	PACKING PAD R
5M17	1	N21458-L	PACKING PAD L
5M18	1	N4536B	PACKING PAD
*5M21	1	N4012A-1	POLYETHYLENE BAG (UNIT)
5M22	1	N40187	POLYETHYLENE BAG (ACCESSORIES)
5M23	1	N45459	POLYETHYLENE BAG
5M24	1	N45458	PACKING PAD (ROTATE)
5M25	1	N44904	PACKING MATERIAL
7M26	1	N45000A	PACKING PAD
*46E26	1	RC-1001-UAE	REMOTE CONTROL TRANSMITTER
46E28	1	UM-3-2	BATTERY
47E21	1	RC-1001-R	REMOTE CONTROL TRANSMITTER
47E22	1	UM-3-2	BATTERY
47E26	1	TANT-051	FR ANTENNA (CORD)
47E27	1	YAE21-001C	MATCHING ADAPTOR

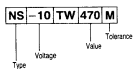
Classify Parts List

A: USA B: U.K. C: EUROPE & OTHERS
 A1: CANADA B1: AUSTRALIA/N.Z. C1: GERMANY

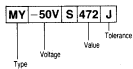
Ref. No.	Description	A	A1	B	B1	C	C1
UNLSE PCB ASSY							
D082	CERAMIC CAPACITOR	UP0508221K	US1876	UP0508221K	US1876		
D155	DIODE	1S8176	1S8176	1S8176	1S8176		
FD01-003	10.7MHZ FILTER	SFE10.7MHL-A	SFE10.7MHL-A				
FE001	FRONT END	F019A	F019A				
NC001-005	CERAMIC CAPACITOR	NIL	NIL				
NC1001	IC	NIL	NIL				
NCB01,002	CARBON RESISTOR	NIL	NIL				
NR003	CARBON RESISTOR	NIL	NIL				
RO14	CARBON RESISTOR	KA16ST124J	KA16ST124J	KA16ST124J	KA16ST124J		
RO46	CARBON RESISTOR	KA16ST222J	KA16ST222J	KA16ST222J	KA16ST222J		
RO61	CARBON RESISTOR	KA16ST223J	KA16ST223J	KA16ST223J	KA16ST223J		
R181	CARBON RESISTOR	KA16ST104J	KA16ST104J	KA16ST104J	KA16ST104J		
PL1	CONTROL PCB ASSY						
PR080	CARBON RESISTOR	NIL	NIL	B2B-PH-C	B2B-PH-C	B2B-PH-C	B2B-PH-C
PR081	GOLDEN-PLATED WIRE	NIL	NIL	KA16ST153J	KA16ST153J	KA16ST153J	KA16ST153J
RW	COIN INDICATORS PCB ASSY						
PD015_018 IDIODE							
MAIN AMP 1 CH PCB ASSY							
CE21	ELECTROLYTIC CAPACITOR	NS100T4WR7N	NS100T4WR7N	NS160T4WR7N	NS160T4WR7N	NS160T4WR7N	NS160T4WR7N
CE35	ELECTROLYTIC CAPACITOR	NS100T4WR7N	NS100T4WR7N	NS160T4WR7N	NS160T4WR7N	NS160T4WR7N	NS160T4WR7N
RE31	FLAME PROOF RESISTOR	FR25ST563J	FR25ST563J	FR25ST104J	FR25ST104J	FR25ST104J	FR25ST104J
MAIN AMP 8 CH PCB ASSY							
CE22	ELECTROLYTIC CAPACITOR	NS100T4WR7N	NS100T4WR7N	NS160T4WR7N	NS160T4WR7N	NS160T4WR7N	NS160T4WR7N
CE36	ELECTROLYTIC CAPACITOR	NS100T4WR7N	NS100T4WR7N	NS160T4WR7N	NS160T4WR7N	NS160T4WR7N	NS160T4WR7N
RE32	FLAME PROOF RESISTOR	FR25ST563J	FR25ST563J	FR25ST104J	FR25ST104J	FR25ST104J	FR25ST104J
MAIN POWER SUPPLY PCB ASSY							
FD001-004	FUSE	FU-521034-312	FU-521034-312	FU-521039T	FU-521039T	FU-521039T	FU-521039T
PD03	TERMINAL PIN	WB-3	WB-3	NIL	NIL	NIL	NIL
41214	FUSE HOLDER	S-36051	S-36051	21615102-BB-C	21615102-BB-C	21615102-BB-C	21615102-BB-C
RM 8-1	FUSE LABEL	NIL	NIL	N41853-105	N41853-103	N41853-103	N41853-103
SPEAKER TERMINAL PCB ASSY							
YS101-107 SPEAKER PCB 4P		YK031-0344	YK031-0344	YK031-0344	YK031-0344	YK031-0344	YK031-0344
BACK UP POWER SUPPLY PCB ASSY							
CE13,814	INSTALLED FILM CAPACITOR	EC00A1103MH	EC00A1103MH	EC00A1103MH	EC00A1103MH	EC00A1103MH	EC00A1103MH
MC815	MICRO SOCKET ASSY	NIL	NIL	MK02-693	MK02-693	MK02-693	MK02-693
RE13	CARBON RESISTOR	KA25ST470J	KA25ST470J	KA25ST101J	KA25ST101J	KA25ST101J	KA25ST101J
RE17	CARBON RESISTOR	KA0X0735J	KA0X0735J	NIL	NIL	NIL	NIL
RL001	RELAY ASSY	V512M-NR-VD	V512M-NR-VD	V512M-NR-VD3	V512M-NR-VD3	V512M-NR-VD3	V512M-NR-VD3
1N26	WAVE ASSY	R-31Y16R2T	NIL	672S200R25-C-D	672S200R25-C-D	NIL	672S200R25-C-D
1N28	SOLDER-PLATED WIRE	R-31Y16R2Z	NIL	672S200Y20-C-D	672S200Y20-C-D	NIL	672S200Y20-C-D
1N29	SOLDER-PLATED WIRE	NIL	NIL	672S200Y20-C-D	672S200Y20-C-D	NIL	672S200Y20-C-D
RG FUNCTION SWITCH PCB ASSY							
C405,406	CERAMIC CAPACITOR	HE1387YF473Z	HE1387YF473Z	HE1357YF473Z	HE1357YF473Z	HE1387YF473Z	HE1387YF473Z
MC415	CONNECTOR	M202-636	M202-636	M202-636	M202-636	M202-636	B2B-BH-A
MC416	CONNECTOR	M202-636	M202-636	M202-636	M202-636	M202-636	B2B-BH-A
FAIR SELECTOR PCB ASSY							
C575-378	CERAMIC CAPACITOR	NIL	NIL	NIL	NIL	NIL	HE05034741K
R291-394	RESISTOR (FOR A1,B,C1)	NIL	NIL	NIL	NIL	NIL	KA16ST222J
PRINTED CIRCUIT BOARD							
48E20	PRINTED CIRCUIT BOARD	NIL	FU-711B	FU-711B	FU-711B	FU-711B	FU-711B
F0811,812	FUSE	FU-521024-SM	FU-521024-SM	FU-521029T	FU-521029T	FU-521029T	FU-521029T
PD02	TERMINAL PIN	WA-4	WA-4	WA-4	WA-4	WA-4	WA-4
PD13	TERMINAL PIN	WB-3	WB-3	WB-3	WB-3	WB-3	WB-3
Z0B21	FUSE HOLDER	S-48051	S-48051	21615102-BB-C	21615102-BB-C	21615102-BB-C	21615102-BB-C
SM 7-1	LABEL FUSE	N44853-102	N44853-102	NIL	NIL	NIL	NIL
PROMO INPUT JACK PCB ASSY (FOR G1)							
C405,406	ICL. CERAMIC CAPACITOR	NIL	NIL	NIL	NIL	NIL	XC06057F4732KX
MA15	MICRO SOCKET	NIL	NIL	NIL	NIL	NIL	MC02-697
MA16	MICRO SOCKET	NIL	NIL	NIL	NIL	NIL	MC02-696
PC401,402	CERAMIC CAPACITOR	NIL	NIL	NIL	NIL	NIL	HB0505161MKX
PL401,402	CHOKE COIL	NIL	NIL	NIL	NIL	NIL	100049
PR401,402	CARBON RESISTOR	NIL	NIL	NIL	NIL	NIL	KA16ST222J
RJ401	RCA JACK 2P	NIL	NIL	NIL	NIL	NIL	T0880-AAAA
REAR PANEL AND CHASSIS							
FU001	FUSE	FU-621034-314	FU-621034-314	FU-525029T	FU-525029T	FU-525029T	FU-525029T
RJ401	RCA JACK 2P	T0880-AAAA	T0880-AAAA	T0880-AAAA	T0880-AAAA	T0880-AAAA	NIL
T501	POWER TRANSFORMER	NPT-2324S	NPT-2324S	NPT-2327S	NPT-2327S	NPT-2325S	NPT-2335S
T901	POWER TRANSFORMER	NPT-2324S	NPT-2324S	NPT-2327S	NPT-2327S	NPT-2325S	NPT-2335S
47E 3	AC OUTLET	AC-701F833	AC-701F833	SE-729T-100	SE-729T-100	SE-729T-100	SE-729T-100
47E 4	FUSE HOLDER	FM-033	FM-033	FM-033	FM-033	FM-033	FM-033
47E 6	LINE COORD	ACC-0420D5-4E81	ACC-0420D5-4E81	ACC-0420D6-4E81	ACC-0420D6-4E81	ACC-0420D6-4E81	ACC-0420D6-4E81
47E 7	CORD STOPPER	SR-4N-4	SR-4N-4	SR-5M-4	SR-5M-4	SR-5M-4	SR-5M-4
47E14	TERMINAL HOOK	NIL	NIL	NIL	NIL	NIL	NIL
47E15	LUG	NIL	NIL	NIL	NIL	NIL	NIL
2M 3	REAR PANEL	NIL	NIL	NIL	NIL	NIL	NIL
4N23	TERMINAL COVER	N40182	N40182	N40488-2A	N40488-2A	N40488-1A	N40488-1A
4N25	INSULATION SHEET	NIL	NIL	N45333	N45333	N45333	N45333
4N27	SPACER	NIL	NIL	N40365	N40365	NIL	NIL
8W22	TAP SCREW S, BIND HEAD, B	NIL	NIL	N40368	N40368	NIL	NIL
9M12	UL TYP. HEXAGONAL HEAD	NIL	NIL	T88430X16-B	T88430X16-B	NIL	NIL
9M17	UL TYP. HEXAGONAL HEAD	NIL	NIL	T88X30-2T	T88X30-2T	NIL	NIL
PACKING							
48E26	REMOTE CONTROL TRANSMITTER	RC-1001-UAE	RC-1001-UAEFG	RC-1001-UAEFG	RC-1001-UAEFG	RC-1001-UAEFG	RC-1001-UAEFG
47E28	MATCHING ADAPTOR	NIL	NIL	YAF11-0329	YAF11-0329	YAF11-0329	YAF11-0329
SM 7	CARD, WARRANTY REGISTRATION	WBL-MC2A	WBL-MC2A	NIL	NIL	NIL	NIL
SM13	INSTRUCTION MANUAL	OM-824	OM-824	NIL	NIL	OM-826	OM-826
SM14	INSTRUCTION MANUAL	NIL	NIL	NIL	NIL	OM-125	OM-125
SM1	POLYETHYLENE BAG (UNIT)	N40612A-1	N40612A-1	N45012	N40612A-1	N40612A-1	N40612A-1
OTHER PARTS							
SM 5	LABEL, PUSE	N41939	N41939	NIL	NIL	NIL	NIL
SM 7-2	LABEL, DRP	NIL	NIL	NIL	NIL	NIL	N45460
SM 8	LABEL, SAA1965(LIGHTNING FLASH)	N44043	N44043	NIL	NIL	NIL	NIL
SM 9	NON-WARRANTY CARD	LEN-2006	LEN-2006	NIL	NIL	NIL	NIL
SM10	CARD, WARRANTY	LEN-2001	LEN-2001	NIL	NIL	NIL	NIL
SM24	STICKER, WARNING	NIL	NIL	N41994	N41994	NIL	NIL
SM28	SAFETY INSTRUCTION SHEET	NK6385	NK6385	NIL	NIL	NIL	NIL
SM29	CAUTION SHEET, POLARIZED PLUG	N44687A	N44687A	NIL	NIL	NIL	NIL
SM30	LABEL, VOLTAGE	N45567	N45567	NIL	NIL	NIL	NIL
1W22	SOLDER-PLATED WIRE	672S200T11-D-D	672S200T11-D-D	672S200R06-D-D	672S200A12-D-D	672S200R06-D-D	672S200R06-D-D
1W24	SOLDER-PLATED WIRE	672S200T17-D-D	672S200T17-D-D	672S200Y19-D-D	672S200Y19-D-D	672S200T19-D-D	672S200T19-D-D
1W27	SOLDER-PLATED WIRE	672S200T07-D-D	672S200T07-D-D	672S200Y07-D-D	672S200Y07-D-D	672S200T07-D-D	672S200T07-D-D
1W29	UL TYP. TUBE	UP-400810	UP-400810	UP-400810	UP-400810	UP-400810	UP-400810

Capacitors Description

• Electrolytic



• Mylar - Styrol



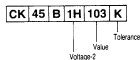
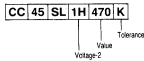
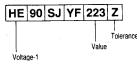
• Electrolytic

Type	Voltage	Value	Tolerance
LL: Low Leak	-10: 10V	R47: 0.47 μ F	K: \pm 10%
NP: Non-Pole	-50: 50V	4R7: 4.7 μ F	M: \pm 20%
NS: Standard	6R3: 6.3V	470: 470 μ F	
		471: 470 μ F	
		472: 4700 μ F	

• Mylar - Styrol

Type	Voltage	Value	Tolerance
MY: Mylar	-25V: 25V	4R7: 4.7pF	G: \pm 2%
ST: Styrol	125V: 125V	470: 47pF	J: \pm 5%
	-63T: 63V	471: 470pF	K: \pm 10%
		472: 4700pF	M: \pm 20%
		473: 0.047 μ F	
		474: 0.47 μ F	
		(1000pF=0.001 μ F)	

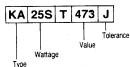
• Ceramic



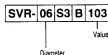
Voltage-1	Voltage-2	Value	Tolerance
HC: 25V	1E: 25V	4R7: 4.7pF	C: \pm 0.25pF
HE: 50V	1H: 50V	470: 47pF	D: \pm 0.5pF
H: 100V	2H: 500V	471: 470pF	F: \pm 1pF
HK: 250V		472: 4700pF	J: \pm 5%
HM: 500V		473: 0.047 μ F	K: \pm 10%
		474: 0.47 μ F	M: \pm 20%
		(1000pF=0.001 μ F)	Z: \pm 80--20%

Resistors Description

• Fixed

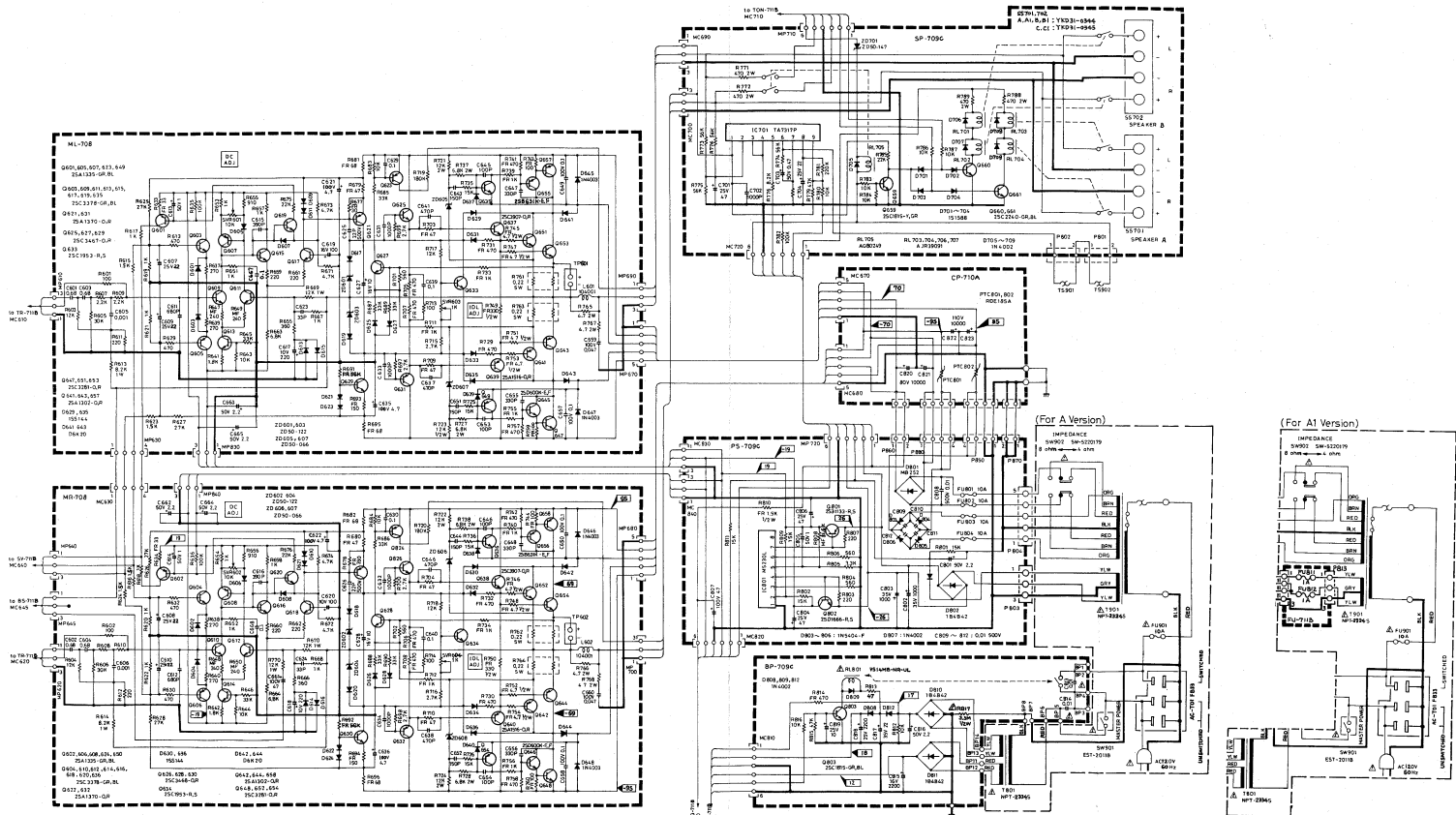


• Semi-Variable

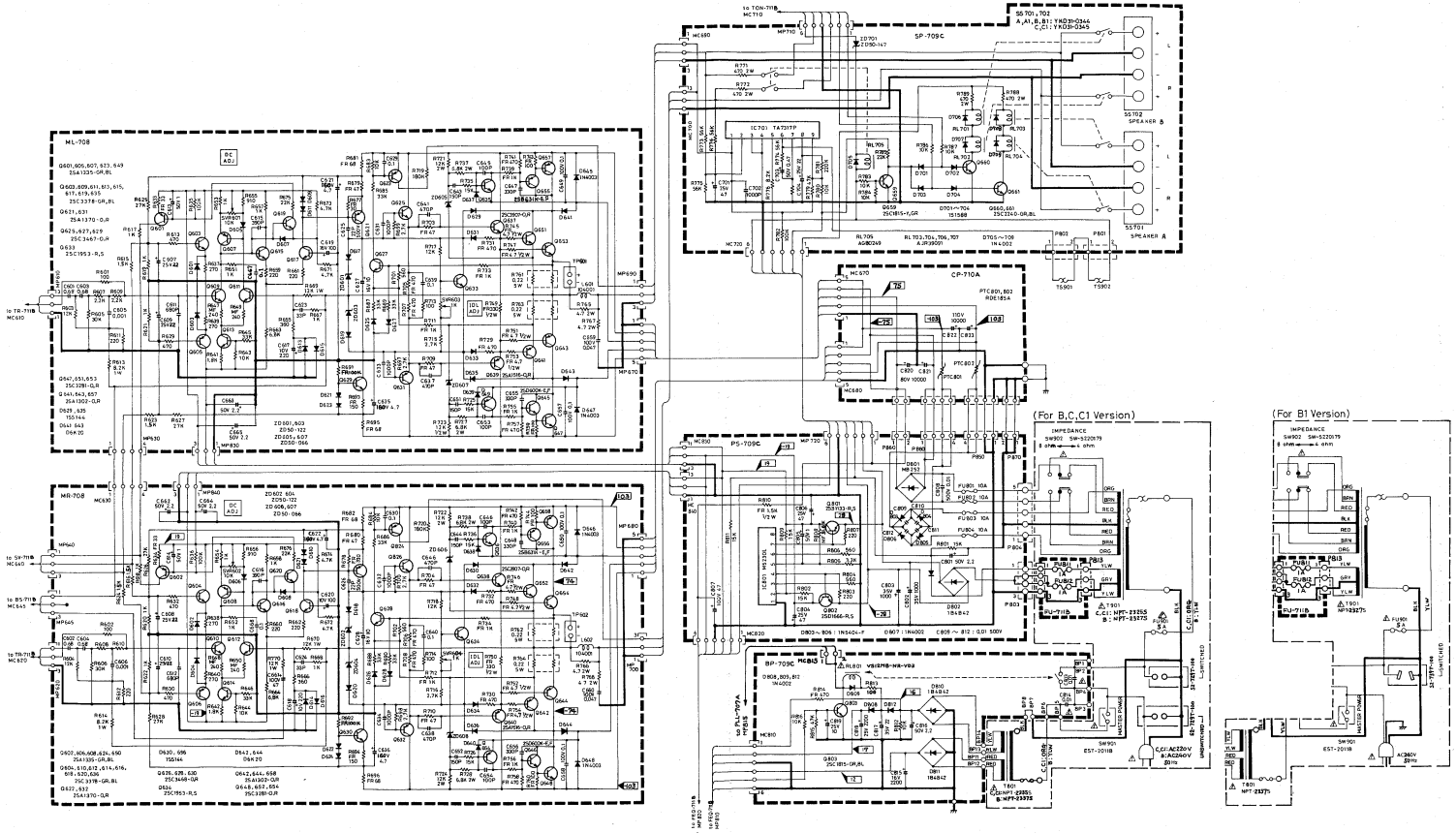


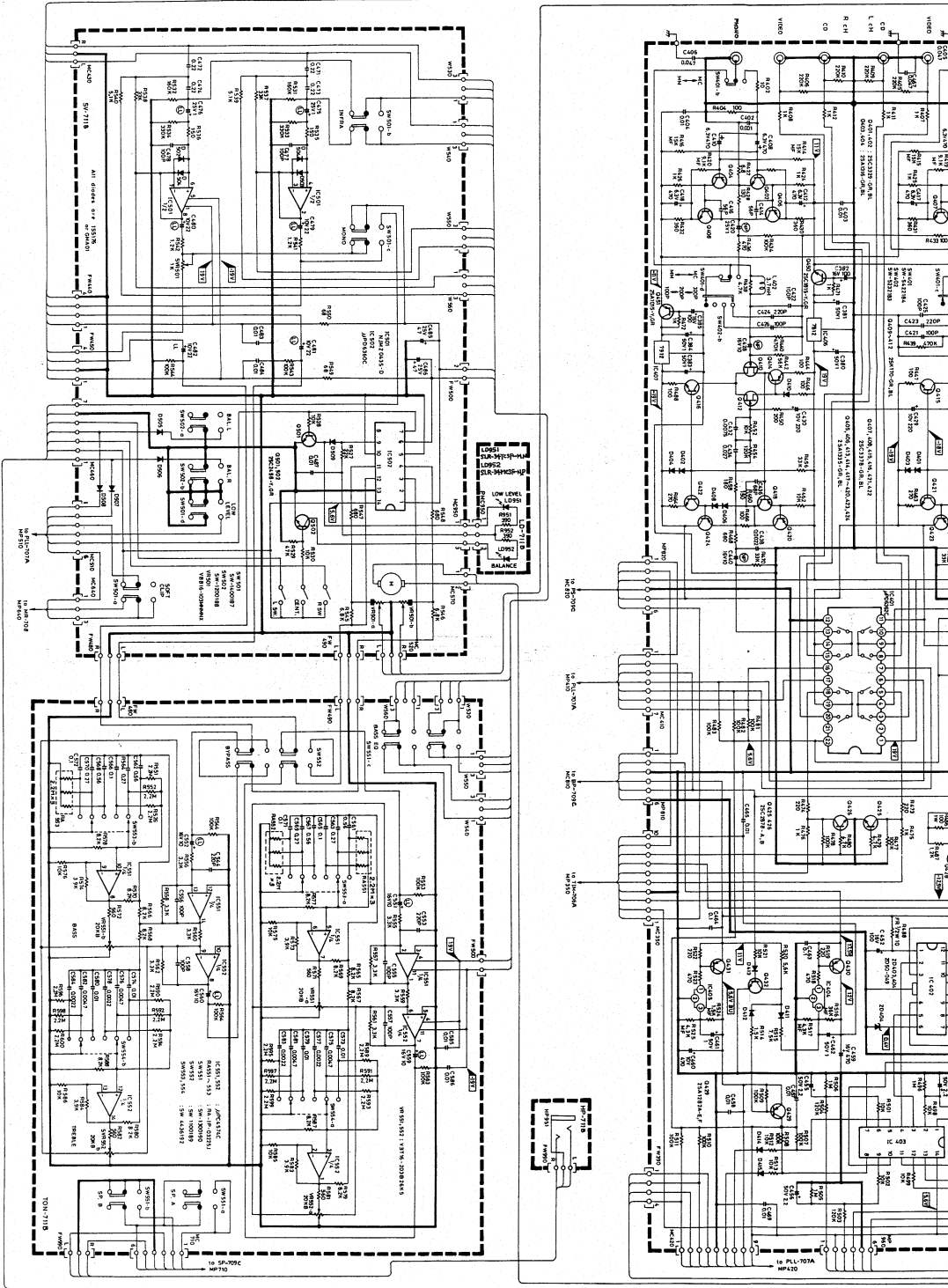
Type	Wattage	Value	Tolerance	Diameter
CE: Cement Case	-2W: 2W	R47: 0.47 Ω	M: \pm 20%	8 ϕ
FR: Flame Proof	10W: 10W	4R7: 4.7 Ω	K: \pm 10%	10 ϕ
KA: Carbon	16S: 16W	470: 470 Ω	J: \pm 5%	06 ϕ
MF: Metal Film	20S: 15W	471: 470 Ω	G: \pm 2%	
RF: Fusible	25S: 14W	472: 4.7k Ω	F: \pm 1%	
SA: Metal Oxide	50S: 12W	473: 47k Ω	D: \pm 0.5%	
	50X: 12W	474: 470k Ω		
	S3W: 3W	475: 4.7M Ω		

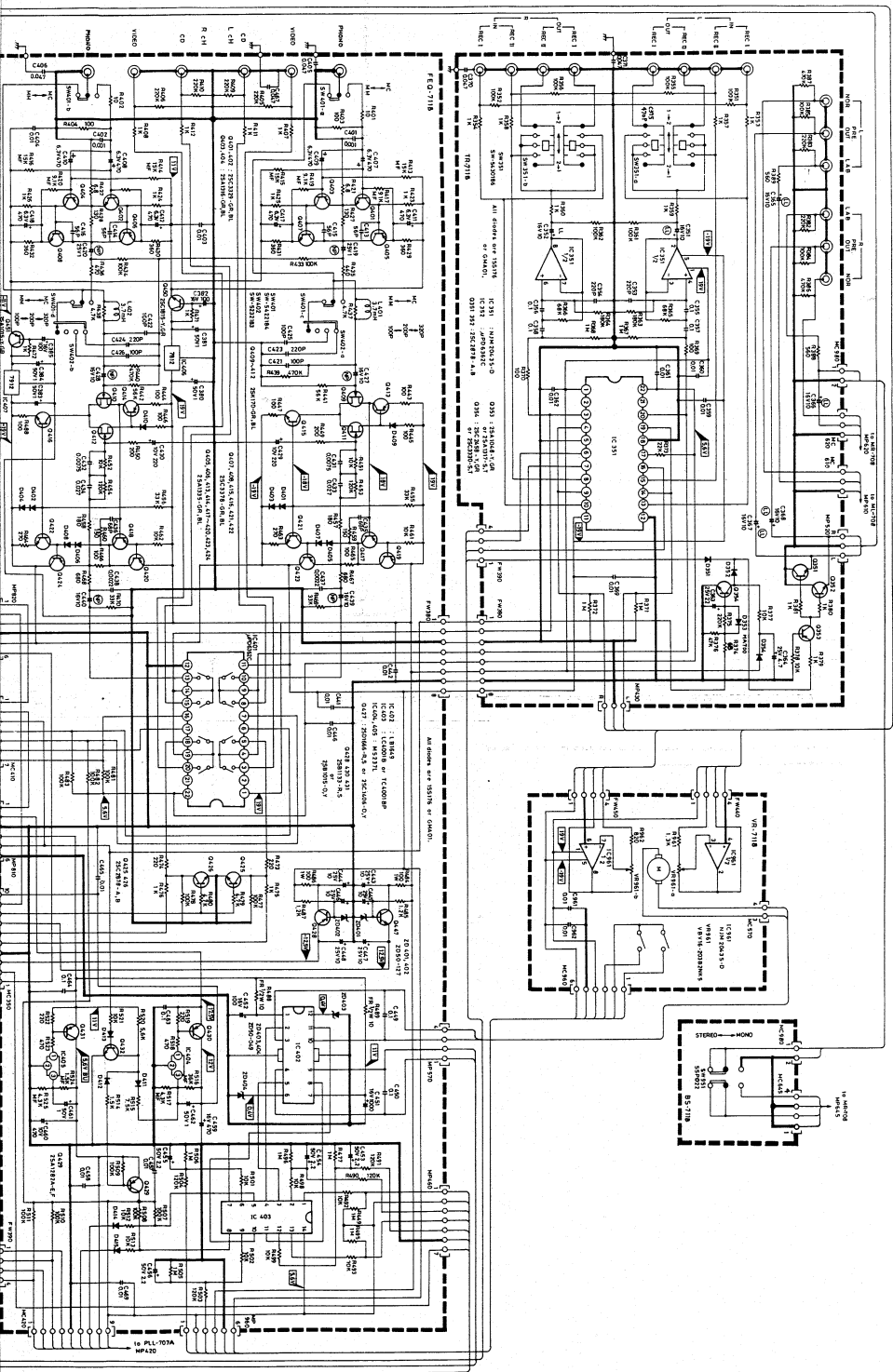
Main Amp and Power Supply
(For A, A1 Version)

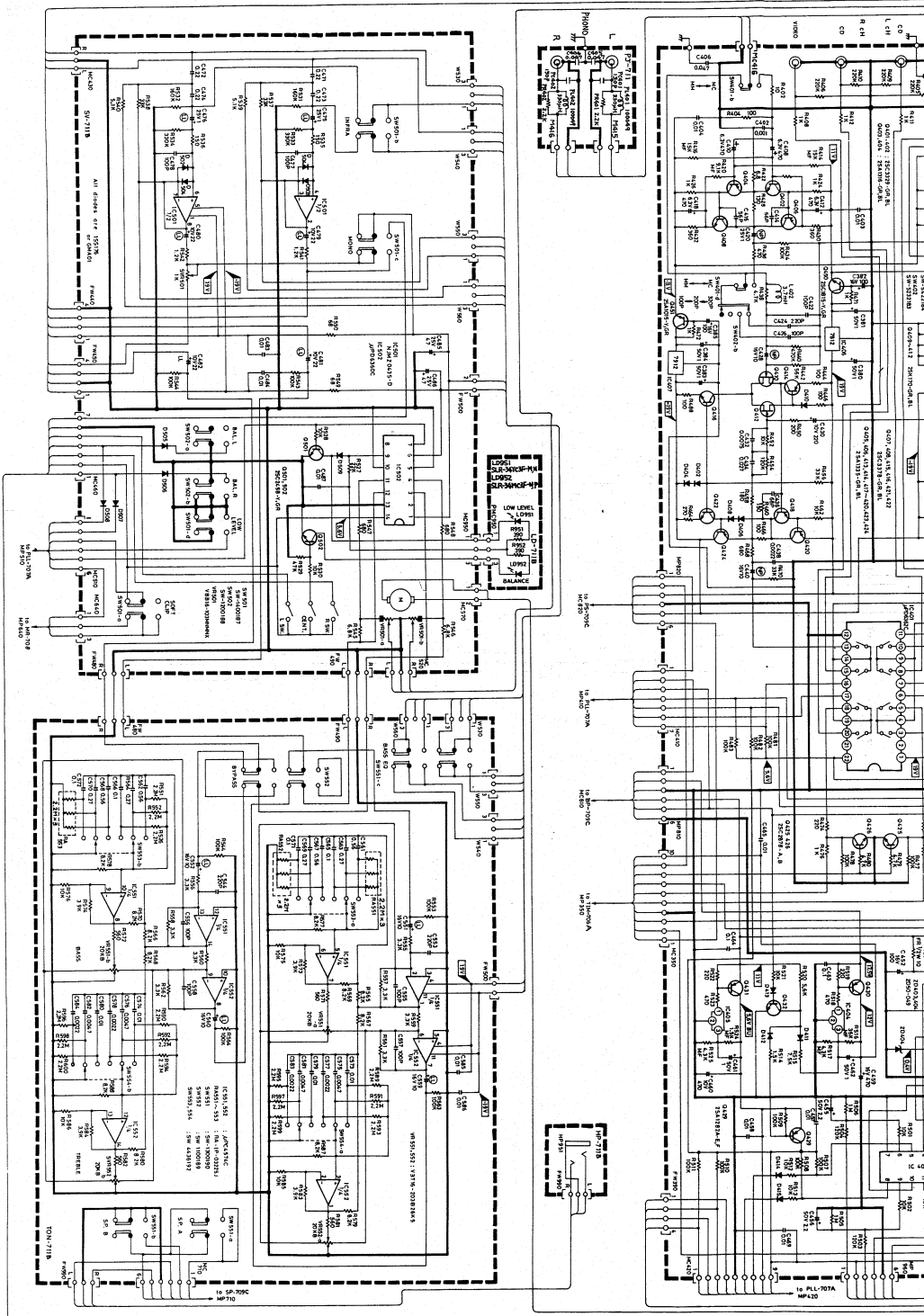


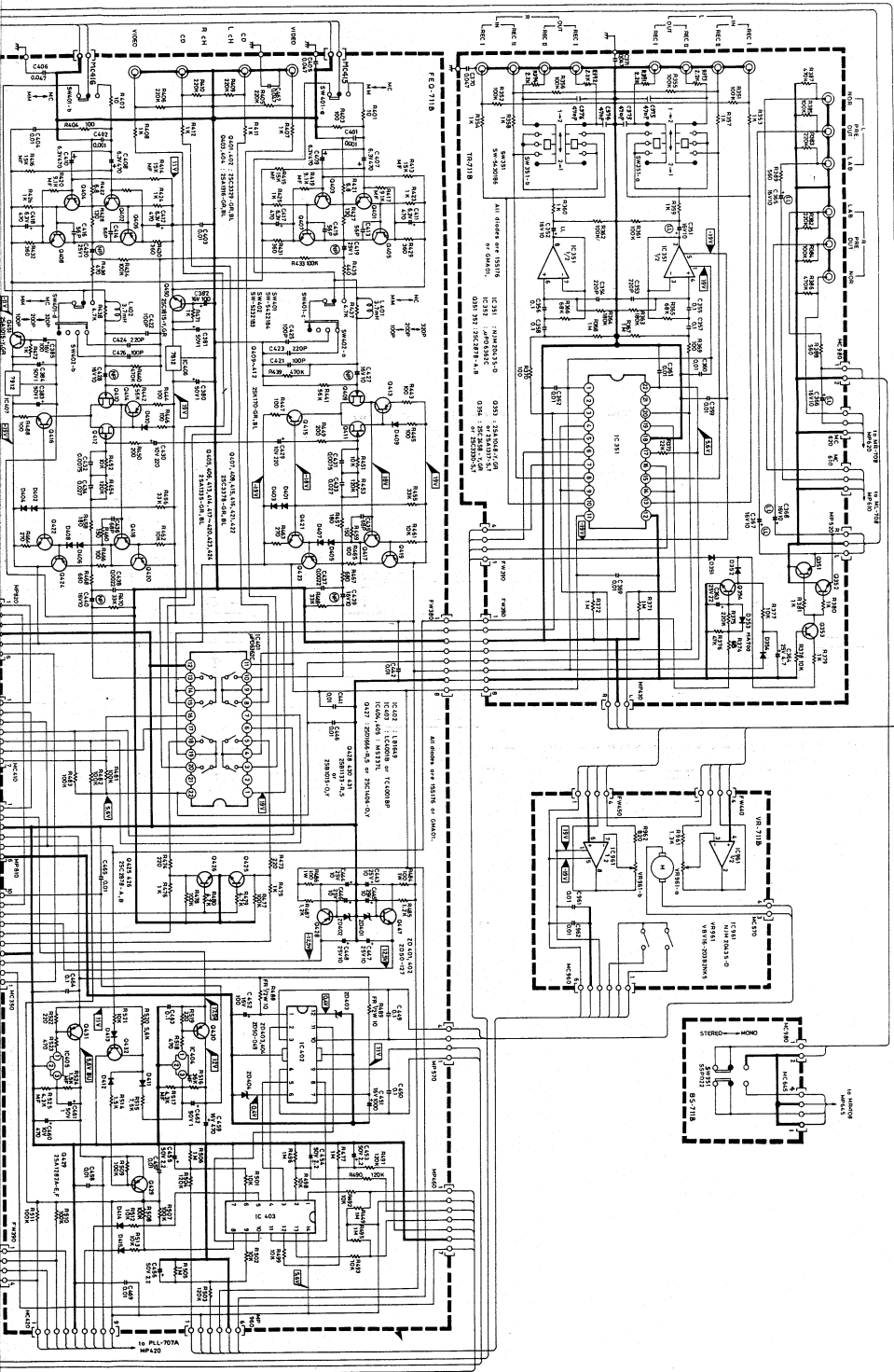
(For B, B1, C, C1 Version)

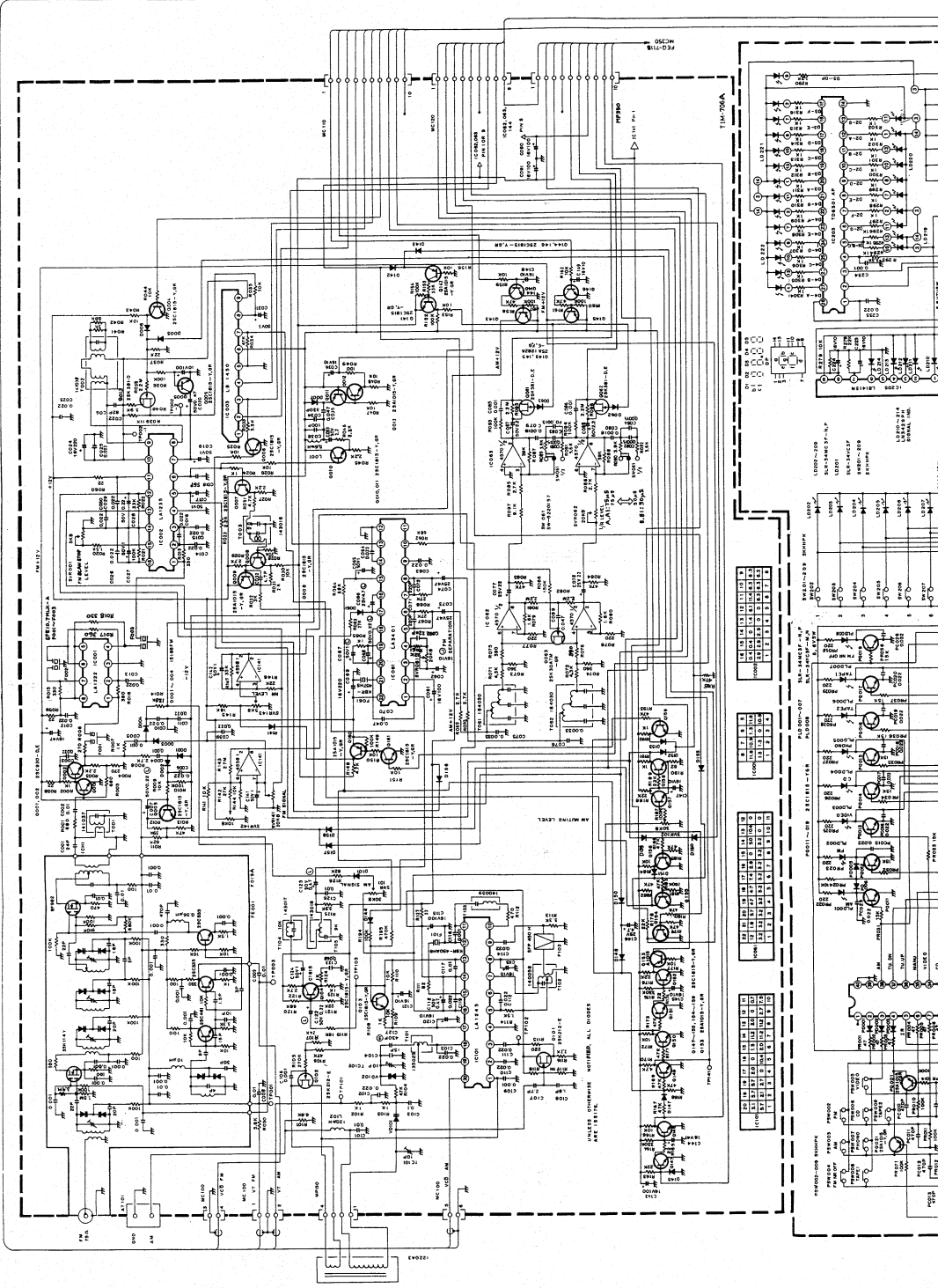




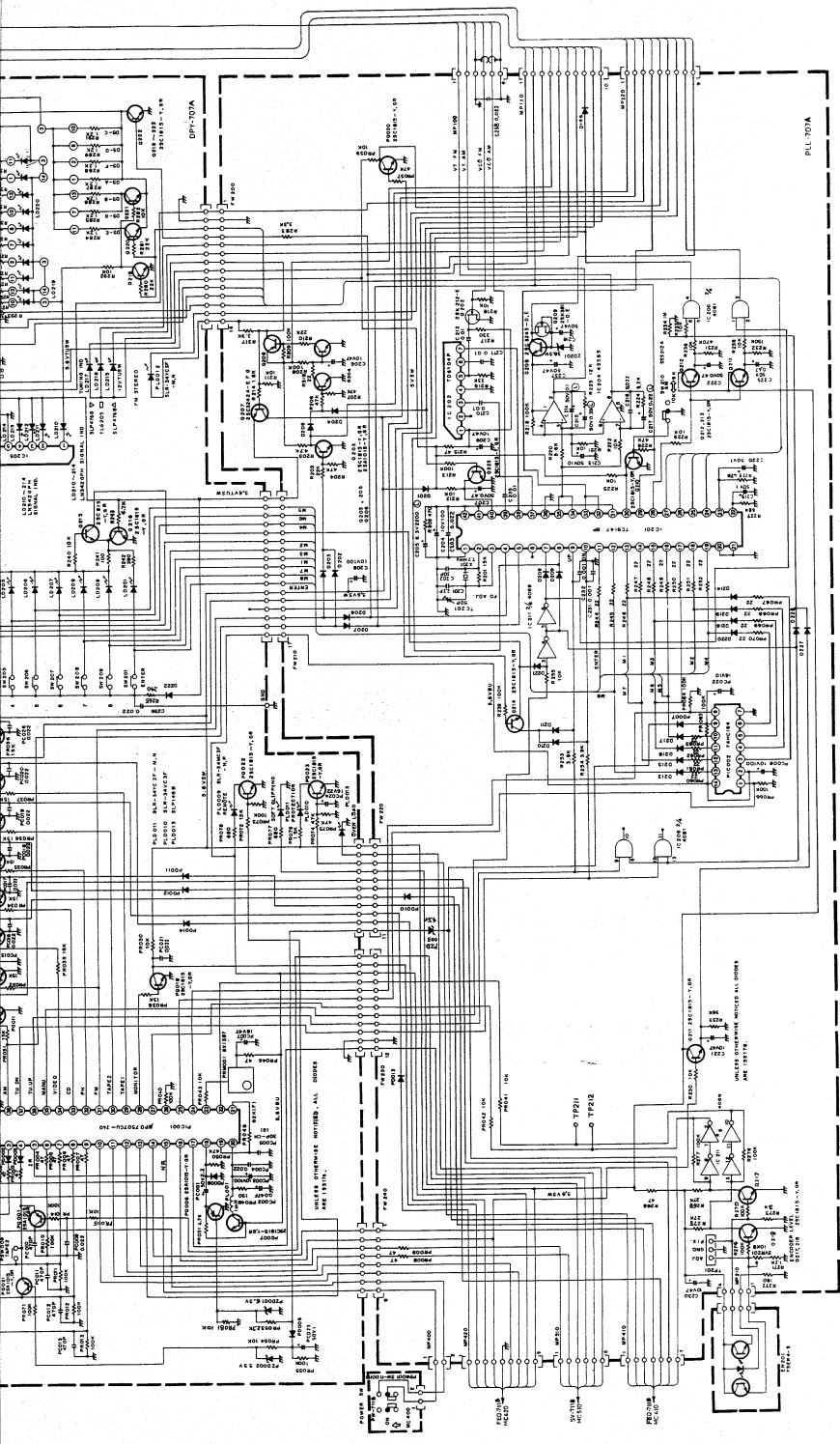








Tuner (For A, A1 Version)



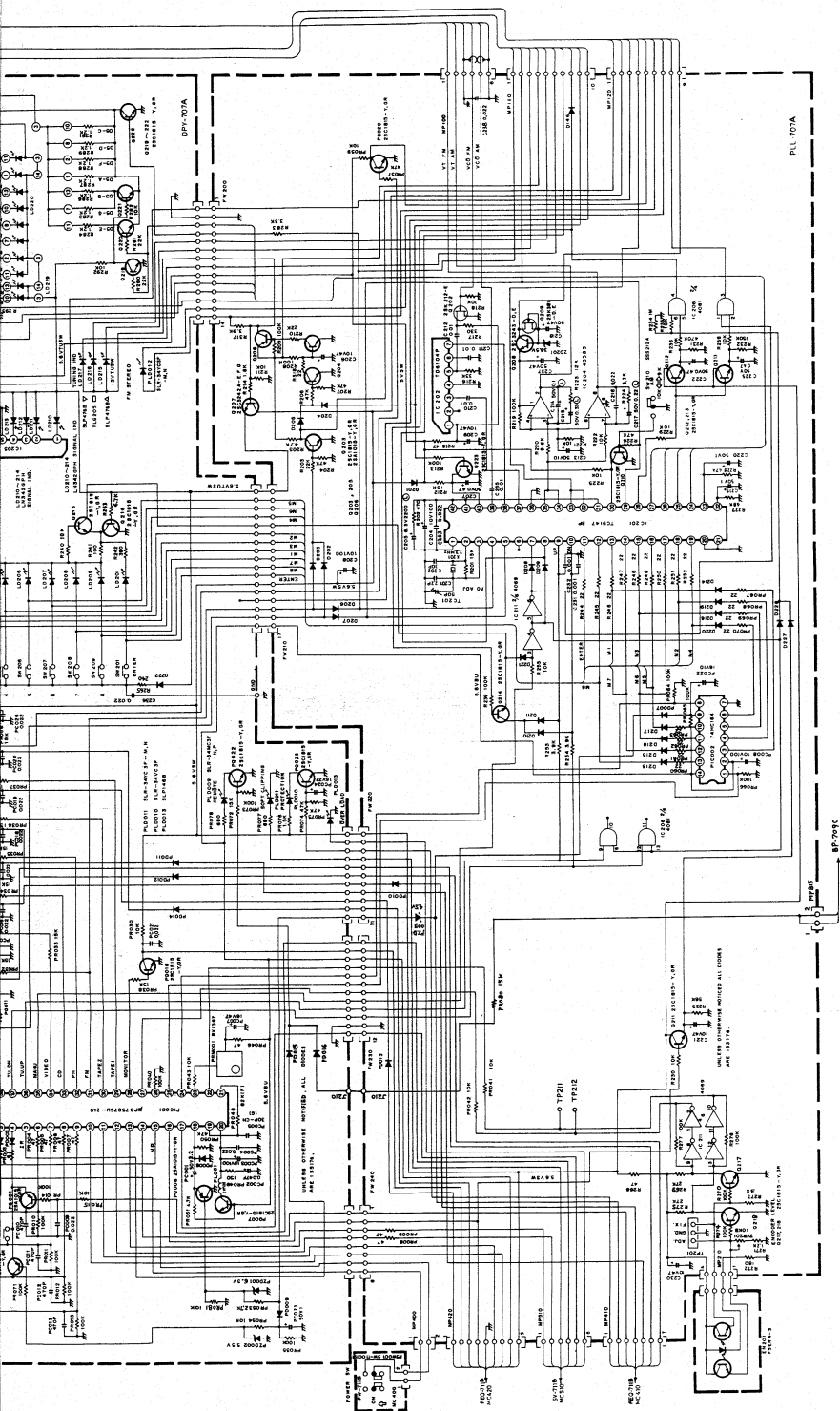
PULL 107A

DPP-107A

UNLESS OTHERWISE NOTIFIED, ALL DIMENSIONS ARE IN INCHES.

UNLESS OTHERWISE NOTIFIED, ALL DIMENSIONS ARE IN INCHES.

UNLESS OTHERWISE NOTIFIED, ALL DIMENSIONS ARE IN INCHES.



P.L. 707A

BP-793C
PC-63F

FIGURE 1

