

May 2005

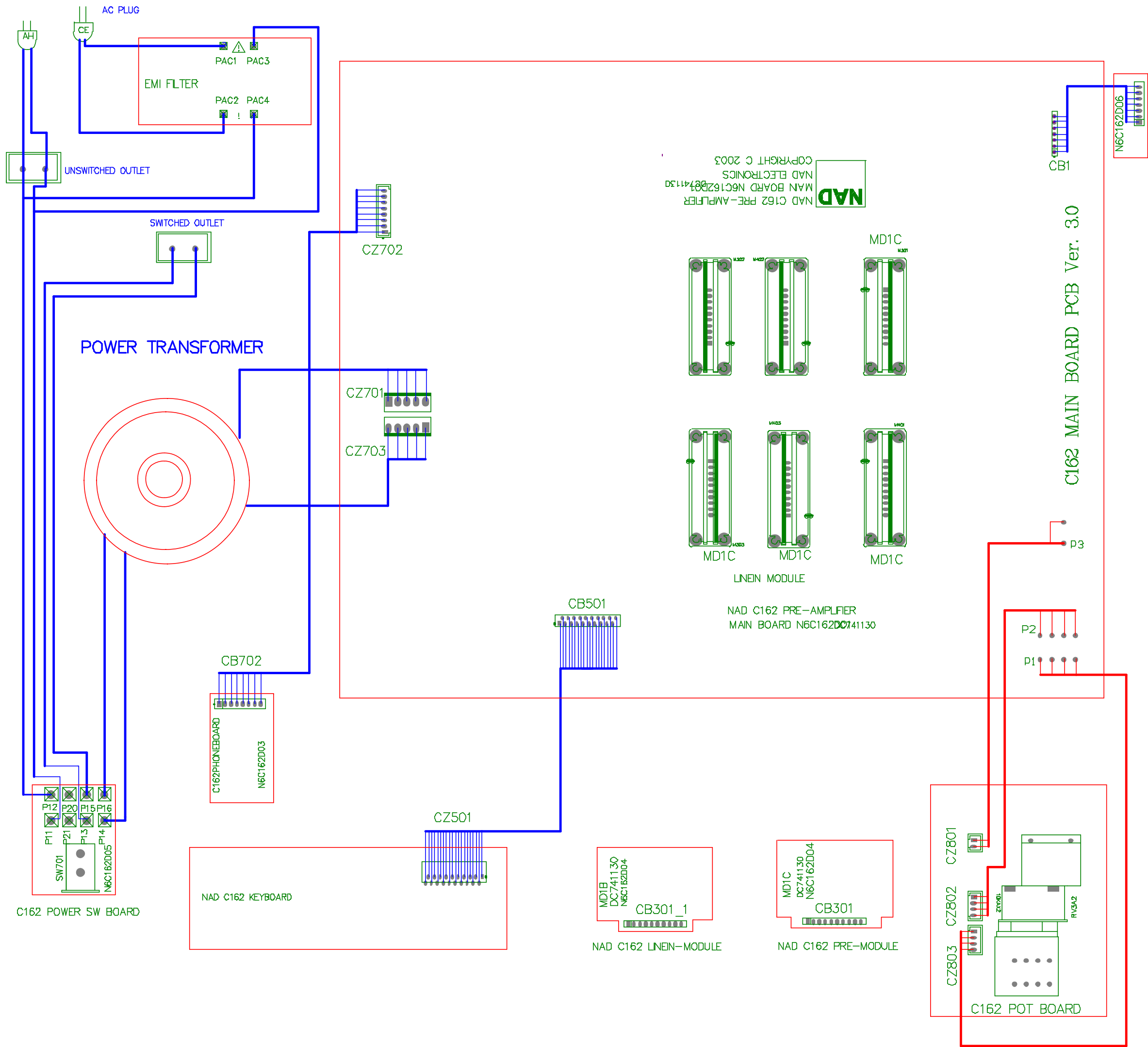
# SERVICE MANUAL



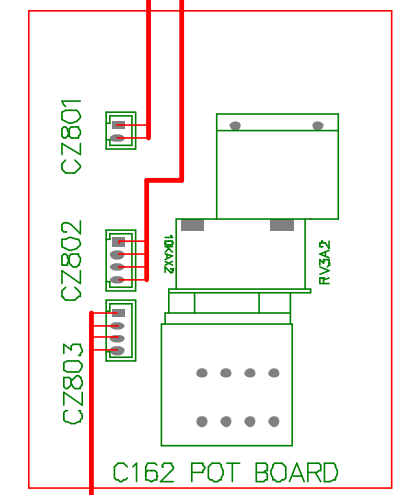
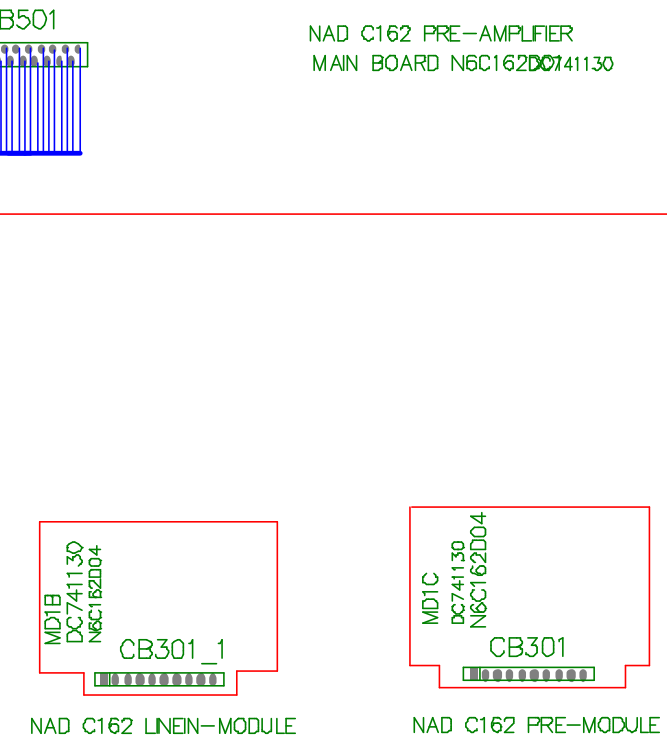
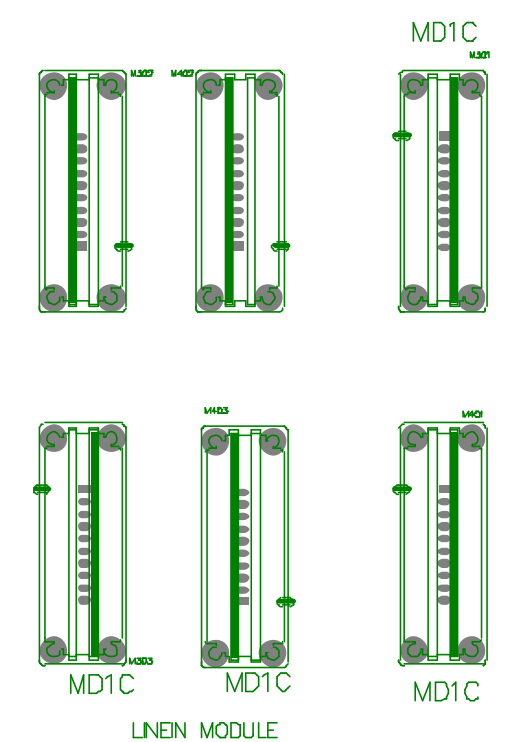
**STEREO  
PREAMPLIFIER**

# C 162

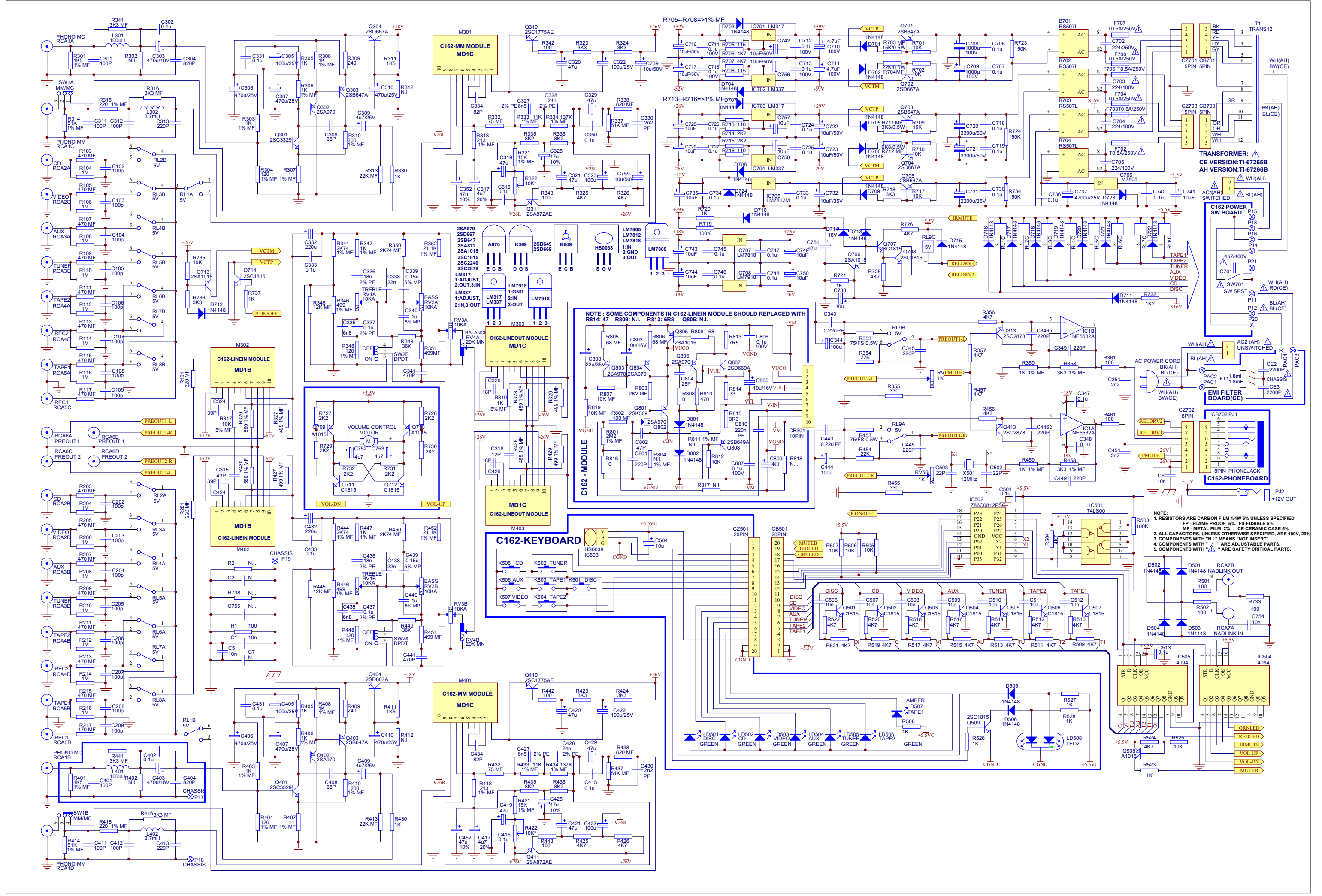
**STEREO  
PREAMPLIFIER**



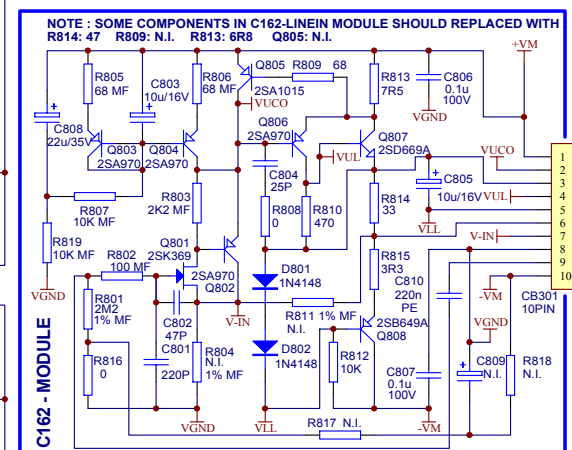
NAD  
 NAD C162 PRE-AMPLIFIER  
 MAIN BOARD N6C162D0141130  
 NAD ELECTRONICS  
 COPYRIGHT © 2003



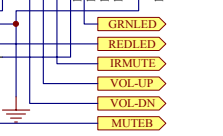
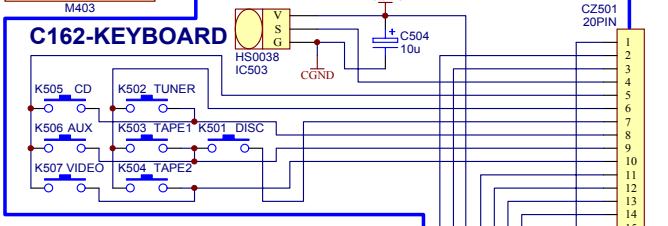
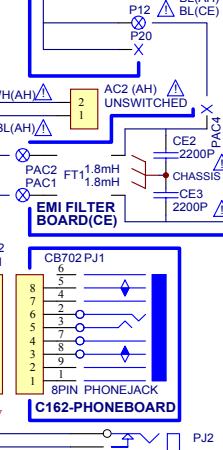
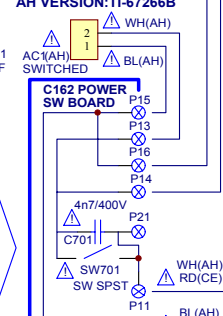
C162 MAIN BOARD PCB Ver. 3.0



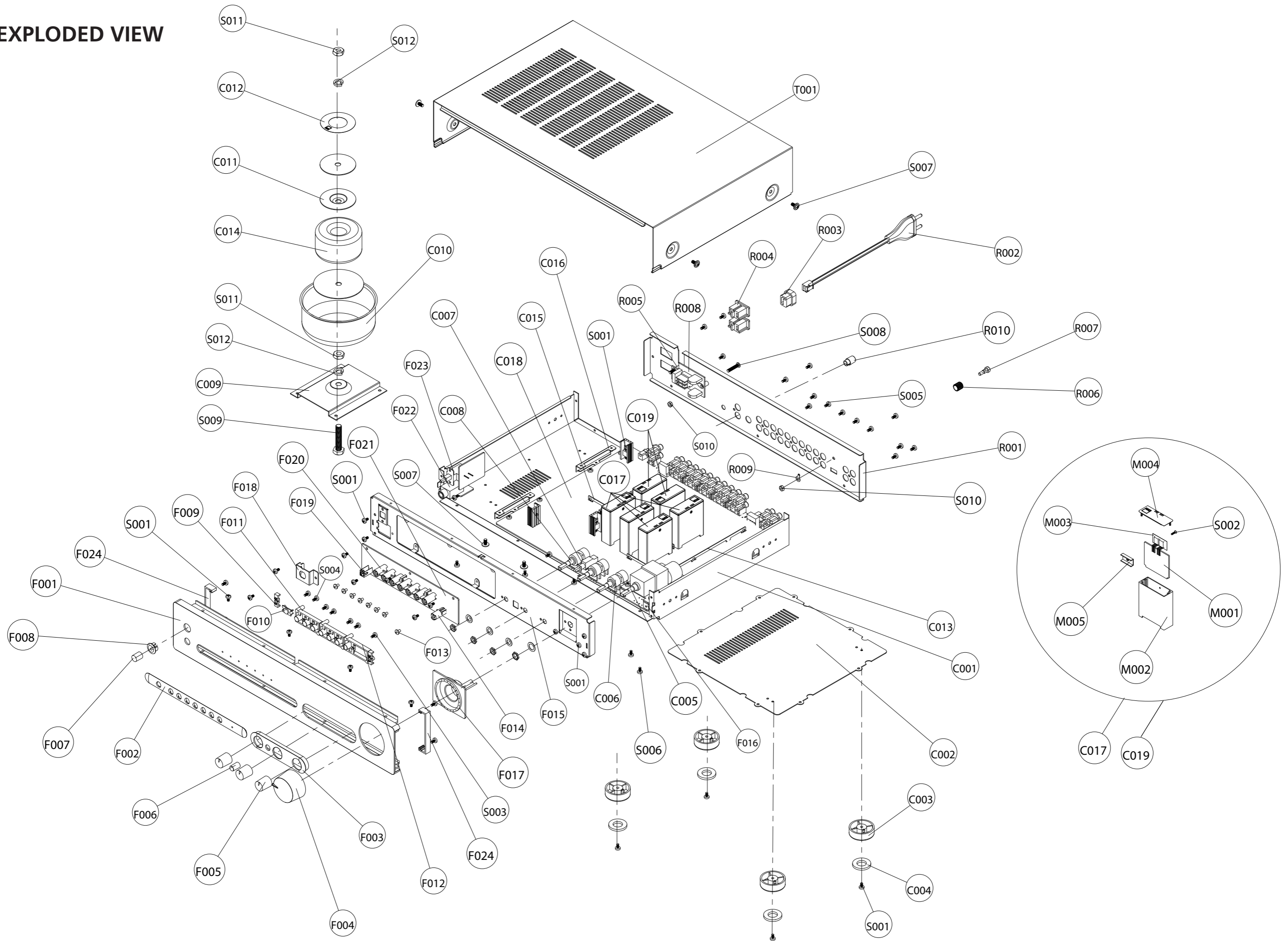
- NOTE:
1. RESISTORS ARE CARBON FILM 1/4W 5% UNLESS SPECIFIED. FP - FLAME PROOF 5% FS-FUSIBLE 5% MF - METAL FILM 2% CE-CERAMIC CASE 5%
  2. ALL CAPACITORS, UNLESS OTHERWISE SPECIFIED, ARE 100V, 20%
  3. COMPONENTS WITH "N.I." MEANS "NOT INSERT"
  4. COMPONENTS WITH " " ARE ADJUSTABLE PARTS.
  5. COMPONENTS WITH "▲" ARE SAFETY CRITICAL PARTS.



TRANSFORMER:  
 CE VERSION: TI-67265B  
 AH VERSION: TI-67266B



# EXPLODED VIEW



## EXPLODED VIEW PARTS LIST

REF. NO	PART NO.	DESCRIPTION	QTY.	REF. NO	PART NO.	DESCRIPTION	QTY.
C001	66-026002-1	Chassis	1	F020	75-003001-0	Sleeve(7P)	1
C002	66-025003-0	Base Cover	1	F021	01-16020-00	Assembled Tack Switch PCB	1
C003	75-010004-1	Foot	4	F022	17-02001-00	Headphone Jack	1
C004	78-001002-0	Foot Pad	4	F023	16-16205-00	Assembled Power Switch PCB	1
C005	09-01103-08	Volume POT	1	F024	66-009007-0	End Cap R	1
C006	09-01203-00	Balance POT	1				
C007	09-01103-04	Treble and Bass POTs	2	R001	67-025001-0	Rear Panel C Version	1
C008	11-02202-00	Push Switch	1		67-025002-0	Rear Panel AH Version	1
C009	66-001010-0	Transformer Bracket	1	R002	15-02251-21	AC Cord C Version	1
C010	67-003006-0	Transformer Shielding Box	1		15-10121-10	AC Cord AH Version	1
C011	66-003004-0	Metal Disc	1	R003	84-001002-0	Strain Relief Bushing	1
C012	94-003002-0	Transformer Label	1	R004	17-07002-10	AC Outlets	2
C013	69-002006-0	Bas Bar (2)	1	R005	85-005001-0	PCB Support	2
C014	18-16040-20	Mains Transformer C Version	1	R006	71-003002-0	Grd. Post Cap	1
	18-16040-10	Mains Transformer AH Version	1	R007	71-003001-0	Grd. Post Bolt	1
C015	69-002007-0	Bas Bar (3)	1	R008	01-16070-00	EMI Filter PCB	1
C016	66-002007-0	PCB Support	2	R009	73-003001-0	Rotate Knob	1
C017	01-16204-10	Assembled Module 301 401 303 403	4				
C018	01-16010-01	Assembled Main Board	1	S001	61-023106-0	Self Taping Screw, STB3x6	56
C019	01-16204-20	Assembled Module M302, M402	2	S002	61-062108-0	Self Taping Screw, STF2x8-0	6
F001	67-025004-0	Fascia	1	S003	61-082204-6	Self Taping Screw, BTB2.6x6	2
F002	77-001002-1	Input Button Lozenge		S004	61-022206-6	Self Taping Screw, STPW2.6x4	7
F003	77-001001-1	Tone Control Lozenge	1	S005	61-023208-0	Self Taping Screw, BTB3x8	19
F004	73-014002-1	Volume Knob	1	S006	61-023108-0	Self Taping Screw, STB3x8	4
F005	73-014001-1	Tone Knob	3	S007	61-084108-0	Self Taping Screw, STPW4x8	8
F006	77-002002-1	Tone Button	1	S008	61-024520-0	Machine Screw, MB4x8	2
F007	77-001006-1	Power Button	1	S009	64-108045-0	Bolt, M8x45	1
F008	77-001007-1	Power Button Bezel	1	S010	62-010402-0	Nut, M4	3
F009	75-003003-0	Fixing Bracket	2	S011	62-010802-0	Nut, M8	2
F010	76-001001-0	IRS Lens	1	S012	63-020820-0	Spring Washer, M8	2
F011	74-001002-1	Input Button (3P)	2				
F012	74-003001-1	Input Button (1P)	1	M001	01-16204-01	Assembled Module PCB NSP	4
F013	76-003001-0	Led Lens	8	M002	70-002004-0	Module Case	6
F014	75-003002-0	Sleeve (1P)	1	M003	78-005004-0	Insulated Cushion	6
F015	66-025001-0	Subfascia	1	M004	75-003004-0	Module Lid	6
F016	66-010010-0	Support 6	2	M005	66-002009-0	Trans.Clamp (Module)	6
F017	77-025001-0	Knob Button Bezel	1				
F018	66-003005-0	Bracket (PH.)	1	T001	67-025003-0	T-Cover	1
F019	66-003003-0	IR Bracket	1				

# SERVICE MANUAL

**C162**

**STEREO PREAMPLIFIER**