

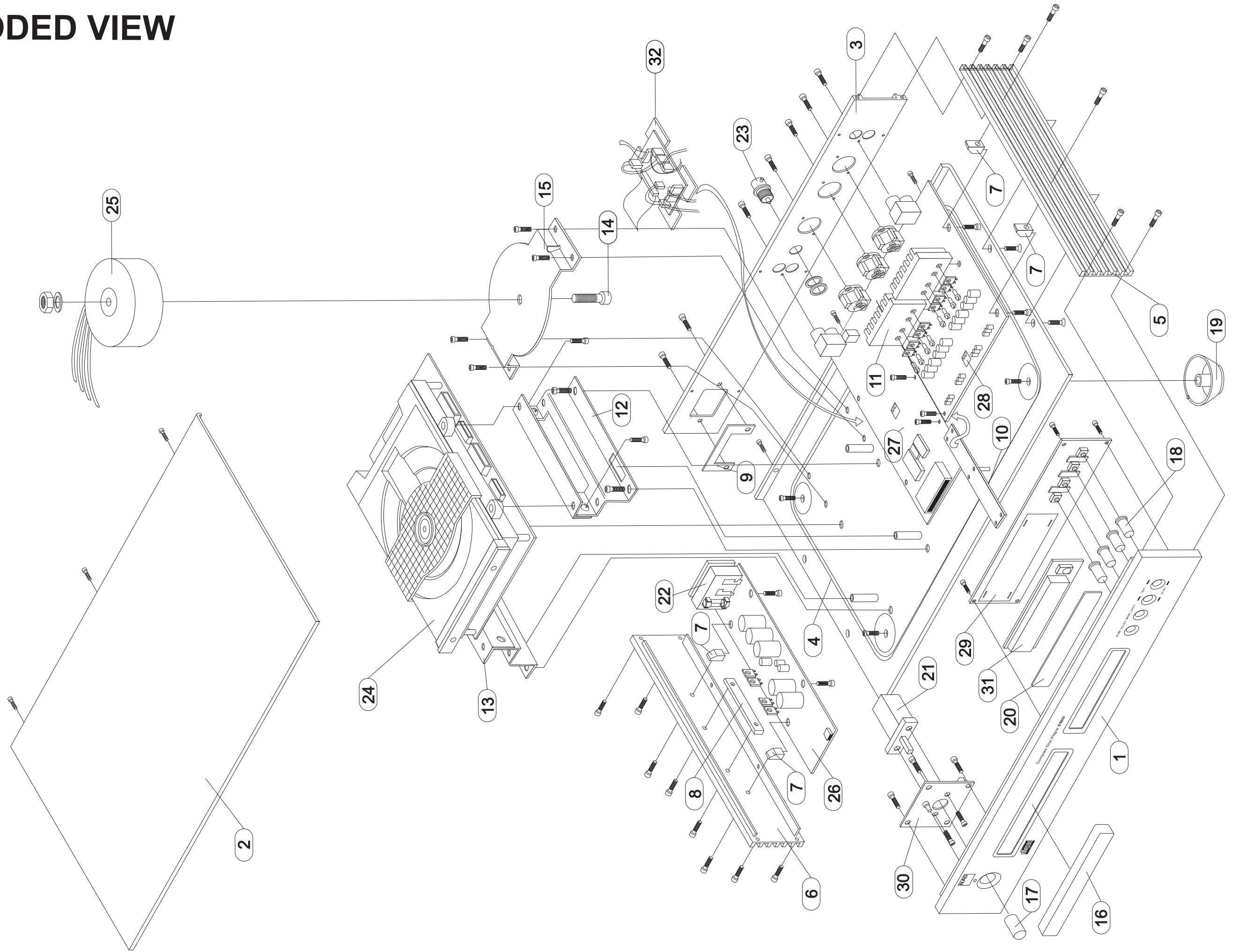
SERVICE MANUAL




S 500i
COMPACT
DISC PLAYER


S 500i
COMPACT
DISC PLAYER

EXPLODED VIEW



EXPLODED VIEW PARTS LIST*

Location	Part Number	Description	Quantity
1	S500i-2001-1	FRONT FASCIA	1
2	S500-2004-2	TOP COVER	1
3	S500-2005-4	REAR PANEL 230V	1
4	S500i-2003-1	BASE PLATE	1
5	S500-2002R-3	RIGHT SIDE PANEL	1
6	S500-2002L-4	LEFT SIDE PANEL	1
7	S500-2026-2	PCB BAR	4
8	S500-2036-2	CLAMP BAR	1
9	S100-2020-2	AC INLET PLATE	1
10	S500-2016-1	PCB PLATE	1
11	S500-2009-5	HEAT SINK 1	2
12	S500i-2013-2	RIGHT MECHANISM BRACKET	1
13	S500i-2113-2	LEFT MECHANISM BRACKET	1
14	NPN	TRANSFORMER BOLT □	1
15	S500i-2023-2	TRAFO BRACKET	1
16	S500i-2008-2	CD TRAY LID	1
17	S100-2011-4	10MM POWER BUTTON	1
18	S100-2121-2	6MM INPUT BUTTON	4
19	S100-2013-3	FOOT WITH RUBBER CUSHION	4
20	S400-2221-2	DISPLAY LENS	1
21	5200-3181-0-01	POWER SWITCH	1
22	AC1	AC INLET	1
23	S500-0206	BNC CONNECTOR	1
24	VAE1250	CD MECHANISM WITH LOADER	1
25	 TI-65575A	TRANSFORMER	1
26	S500-0130	POWER SUPPLY (PSU PCB)	1
27	S500-0100	CONTROL PCB	1
28	S500-0150	DAC PCB	1
29	S500-0170	FRONT PANEL PCB**	1
30	S500-0205	POWER SWITCH PCB WITH SWITCH	1
31	S400-DISPLAY	DISPLAY MODULE**	1
32	MECH-S500i	MECHANISM INTERFACE BOARD + 7 SOCKETS & STICKY FOAM/TAPE	1 1

Parts marked with the symbol  are critical with regard to the risk of fire and electric shock. Replace only with parts recommended by the manufacturer.

** S500-0171 S500-0170 FRONT PANEL PCB AND S400-DISPLAY DISPLAY MODULE

* Refer to S500 Service Manual for electrical parts and service procedures.

SERVICE MANUAL

S 500i
COMPACT
DISC PLAYER

© NAD 2003

NAD ELECTRONICS LTD
LONDON