



T 762

Surround Sound Receiver

SERVICE MANUAL

ADDENDUM

VERSION HISTORY	2
PCB LAYOUT - DSP BOARD (ISSUE 8 - 10)	3 - 5
PCB LAYOUT - KEYBOARD (ISSUE 8 - 10)	6 - 8
SCHEMATIC DIAGRAM - DSP BOARD (ISSUE 8 - 10)	9 - 11
SCHEMATIC DIAGRAM - KEYBOARD (ISSUE 8 - 10)	12 - 14
NEW DSP BOARD AND DSP SCHEMATIC (SERVICE PART REPLACEMENT)	15-16
REPLACEMENT ASSEMBLY FOR Q701	17-18

VERSION HISTORY

ISSUE	DESC. / PART NO.	CAUSE(S)	SERIAL NUMBER
ISSUE 6	DSP : 55-0762054-20-00 (CNC BOARD)	• Change FFC connector to pin connector	R2ZT76200001-R2ZT76200400
	KEYBOARD : 55-0762003-20-00 (CNC BOARD)	• Change FFC connector to pin connector	
ISSUE 7	DSP : 55-0762054-20-00 (TOOLED PCB)	• Move A/D Component • Add Coil in Digital Input • Del Wire form Crystal to Chassis	R2ZT76200401-R2ZT76201400
	KEYBOARD : 55-0762003-20-00 (TOOLED PCB)	• Add Supply E.Cap • Add Transistor for IR_OUT	
ISSUE 8	DSP : 55-0762054-20-01 (TOOLED PCB)	• Add test pin	R31T76201401-R31T76202198
	KEYBOARD : 55-0762003-20-01 (TOOLED PCB)	• Add missing connection of R229.2 to C223.1 • Add test pin	
ISSUE 9	DSP : 55-0762054-20-02 (TOOLED PCB)	• Add C.Cap C1181 for safety issue	R33T76202201-R33T76204100
	KEYBOARD : 55-0762003-20-02 (TOOLED PCB)	• Swap connection of TRIG_OUT_2 / TRIG_OUT_3	
ISSUE 10	DSP : 55-0762054-20-03 (TOOLED PCB)	• Add E.Cap C1182 for eliminate Pop noise	R35T76214101-R35T76214600
	KEYBOARD : 55-0762003-20-03 (TOOLED PCB)	• Delete Component of IR_OUT • C223 Change to Axial Type	

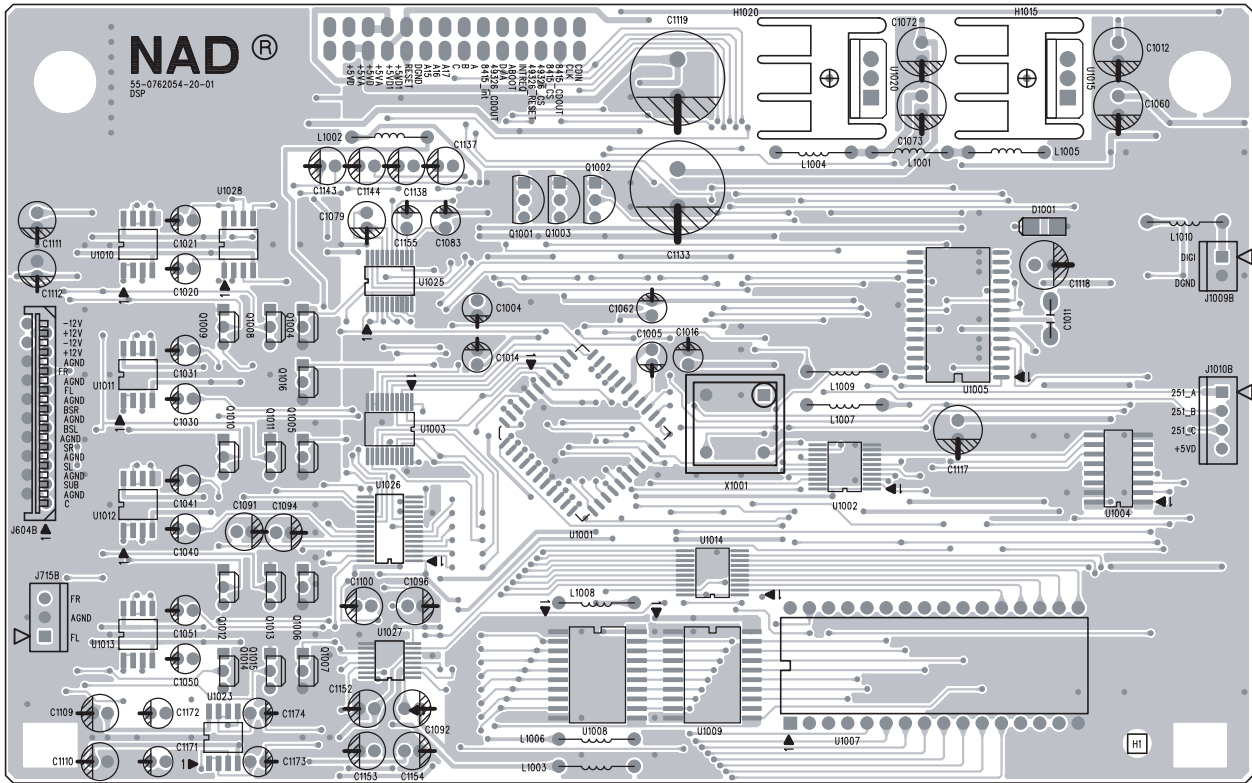
NOTES:

The PCBs are compatible use from Issue 7 to 10. (Issue 6 is not a compatible with later issues)
The DSP assemblies are keyboard specific. Please refer to pages 15 and 16 for jumper settings.

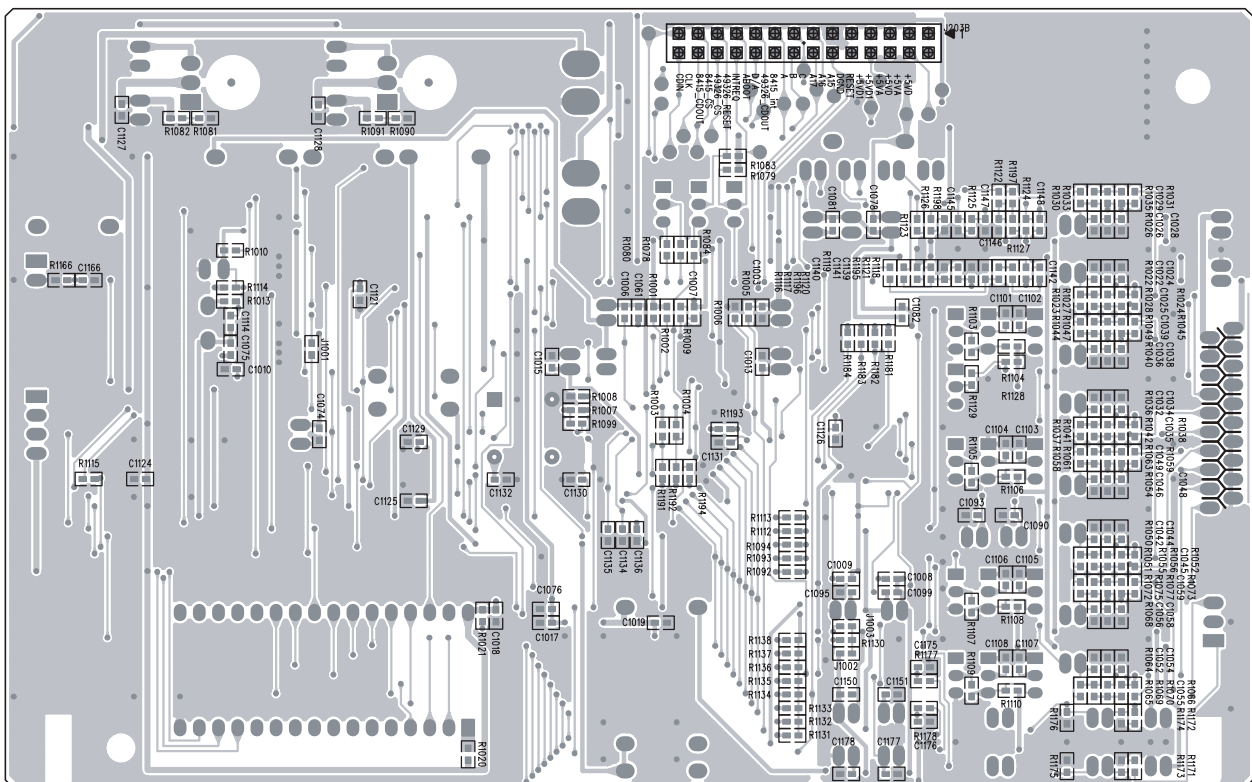
Original P/N	Interim P/N	Final P/N with Description
80-0907620-02-00	800-KEBD62-00	50-922-0762-90 - T762(i) KEYBOARD ASSEMBLY
80-0907620-32-00	800-LEBD62-00	50-915-0762-90 - T762(i) LED BOARD ASSEMBLY
80-0907620-42-00	800-VEBD62-00	50-920-0762-90 - T762(i) COMPOSITE VIDEO BOARD ASSEMBLY
80-0907620-63-00	800-POBD62-00	50-924-0762-90 - T762(i) PRE-OUT BOARD ASSEMBLY
80-0907620-65-00	800-DSBD62-00	see pages 15-16 - T762(i) ORIGINAL DSP ASSEMBLY (NLA)
95-0907625-12-01	OHF-N0762S-01	50-940-1762-90 - T762AH POWER AMP MODULE W/O HS
N/A	OHF-N0762I-01	50-940-0762-90 - T762(i) POWER AMP MODULE

PCB LAYOUT DSP BOARD (ISSUE 8)

COMPONENT SIDE

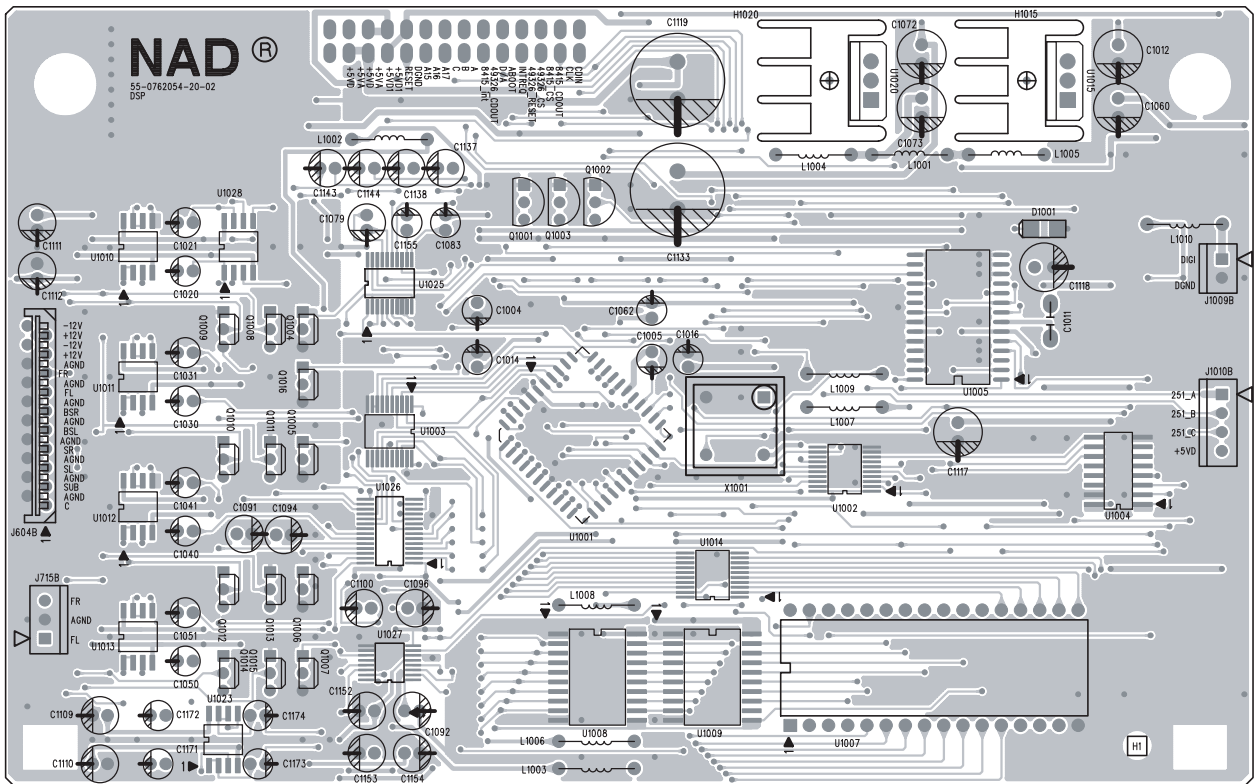


COPPER SIDE

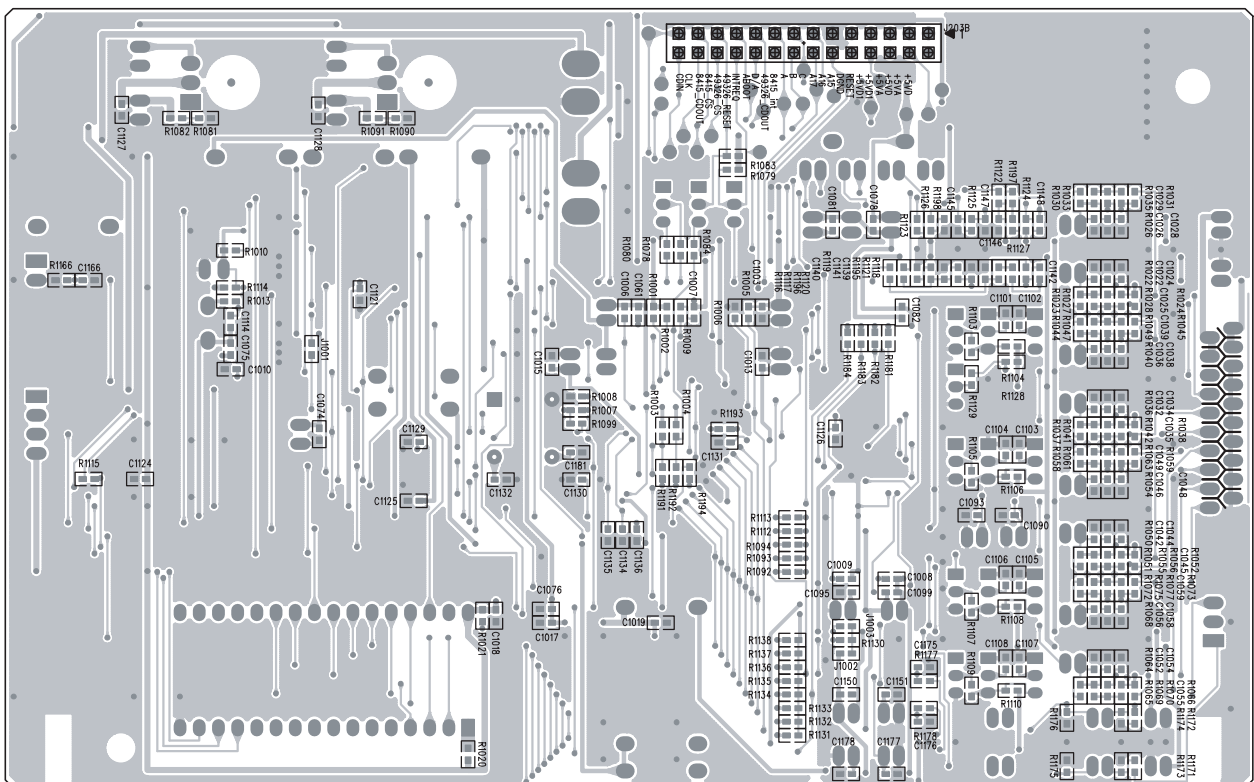


PCB LAYOUT DSP BOARD (ISSUE 9)

COMPONENT SIDE

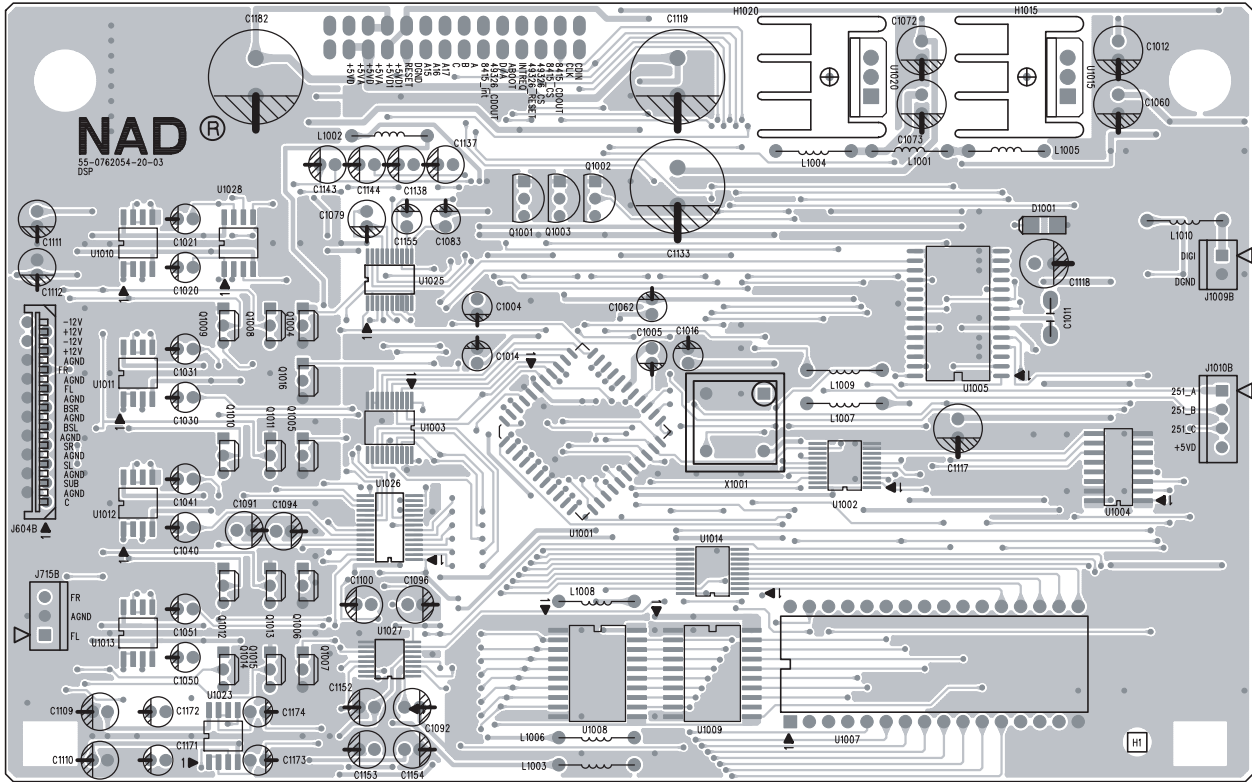


COPPER SIDE

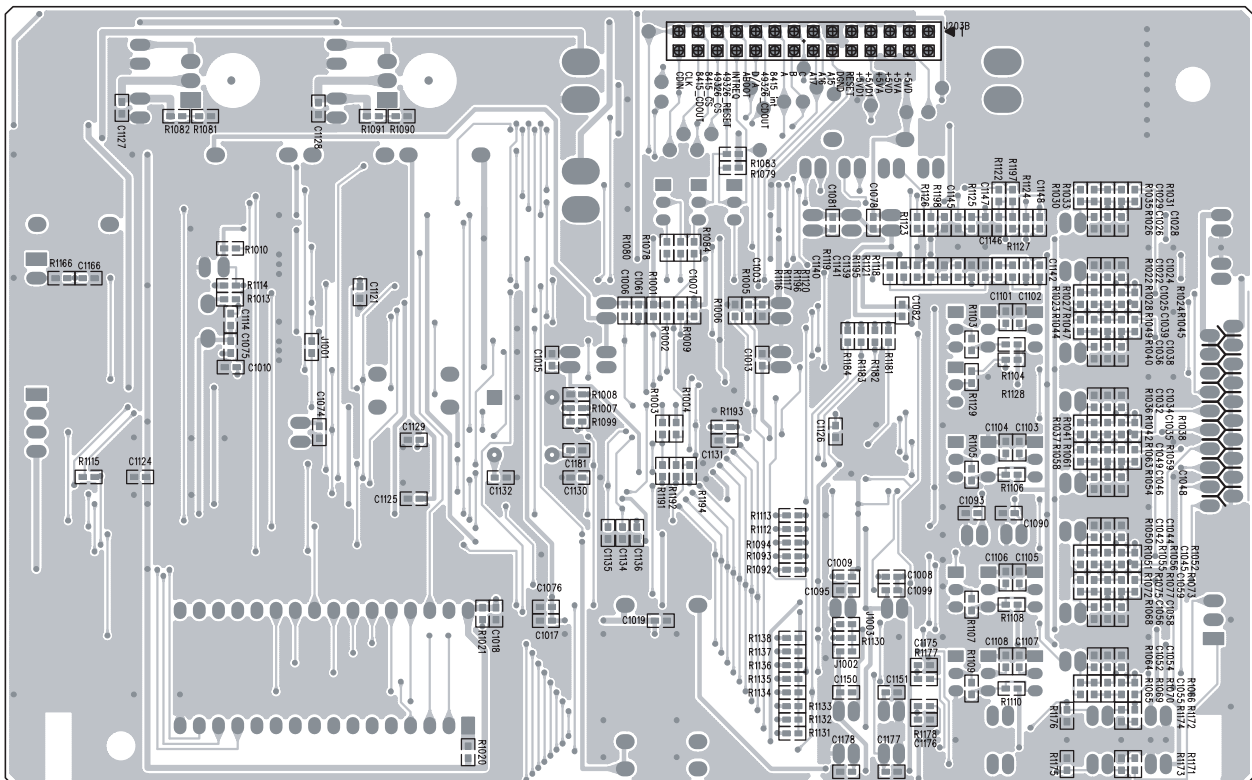


PCB LAYOUT DSP BOARD (ISSUE 10)

COMPONENT SIDE

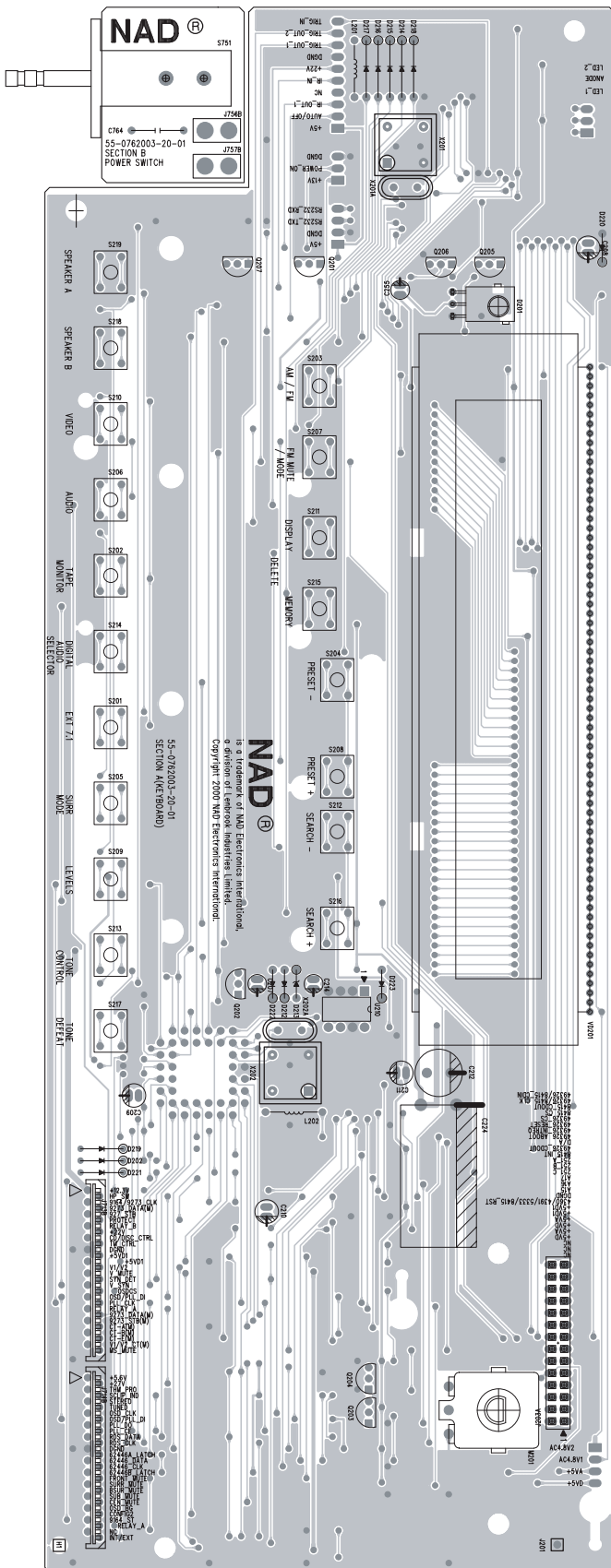


COPPER SIDE

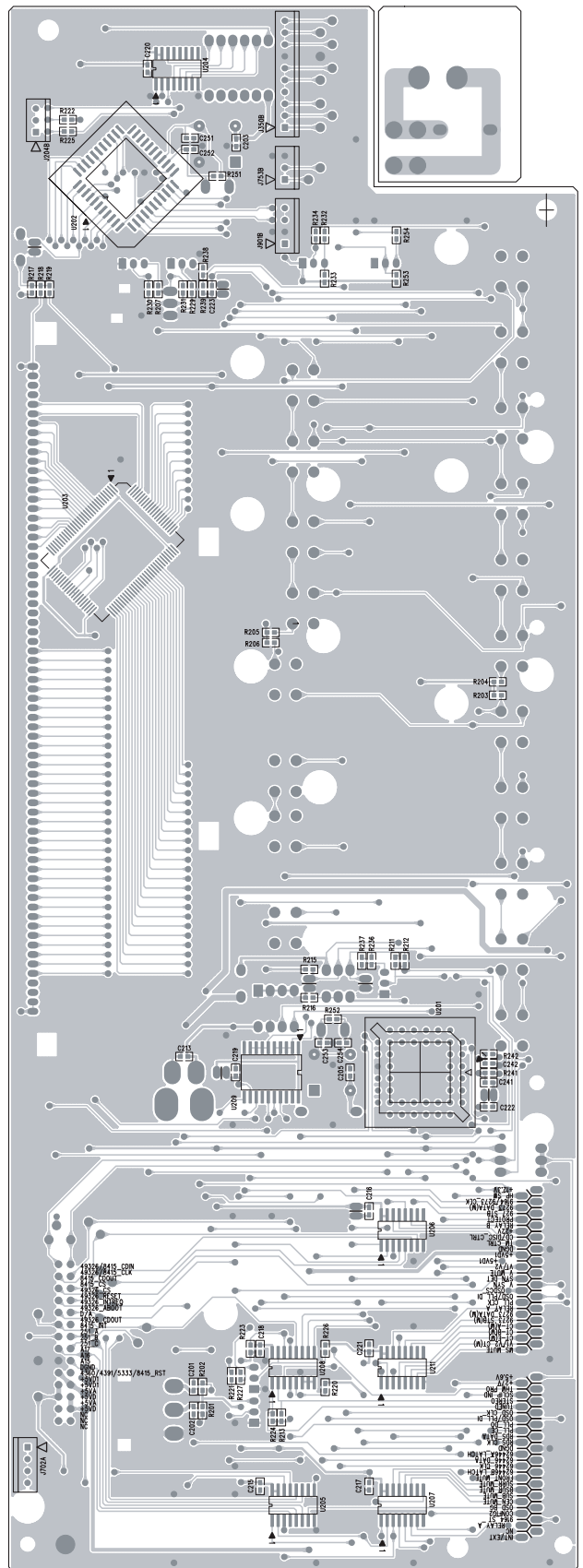


PCB LAYOUT KEYBOARD (ISSUE 8)

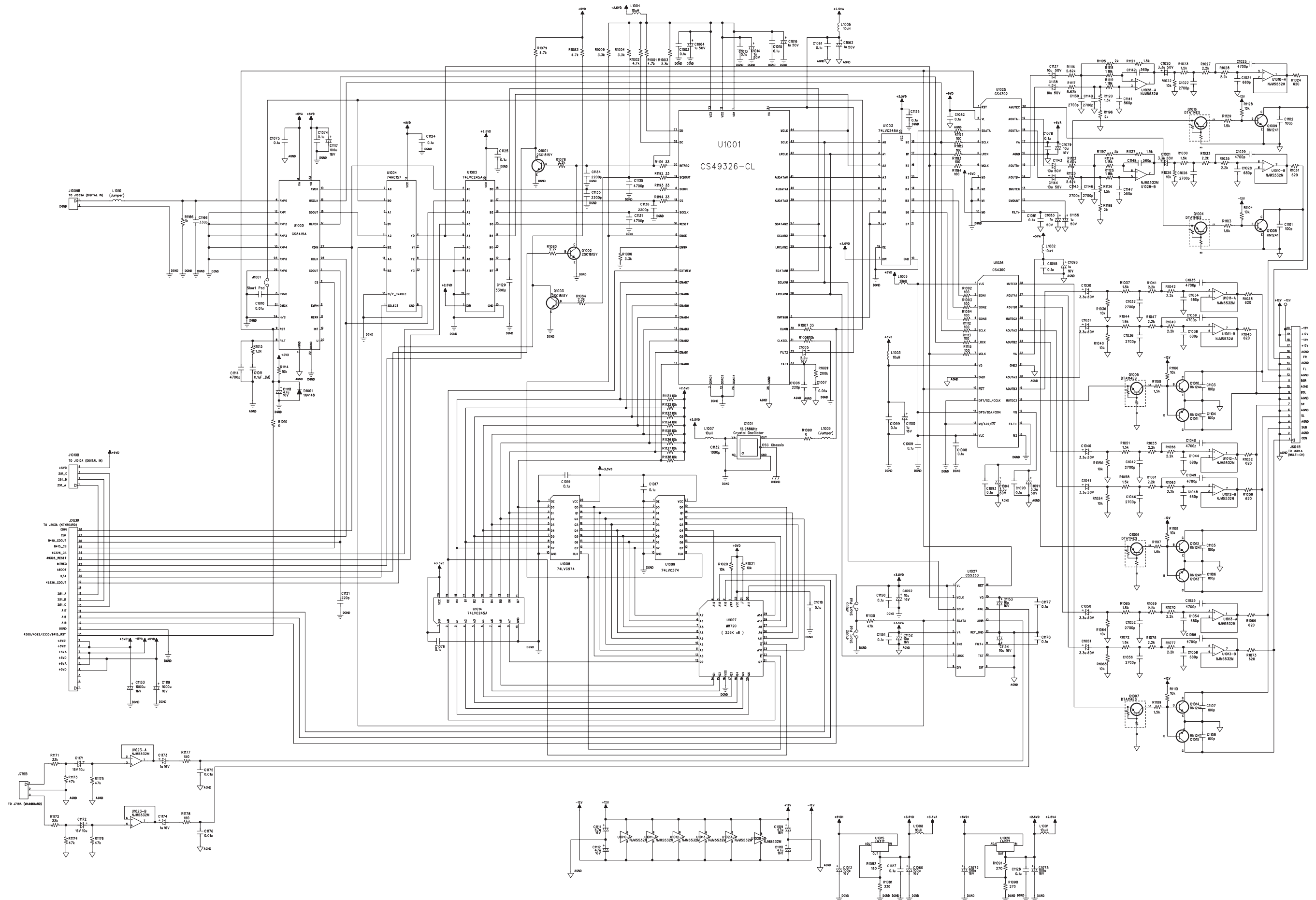
COMPONENT SIDE



COPPER SIDE

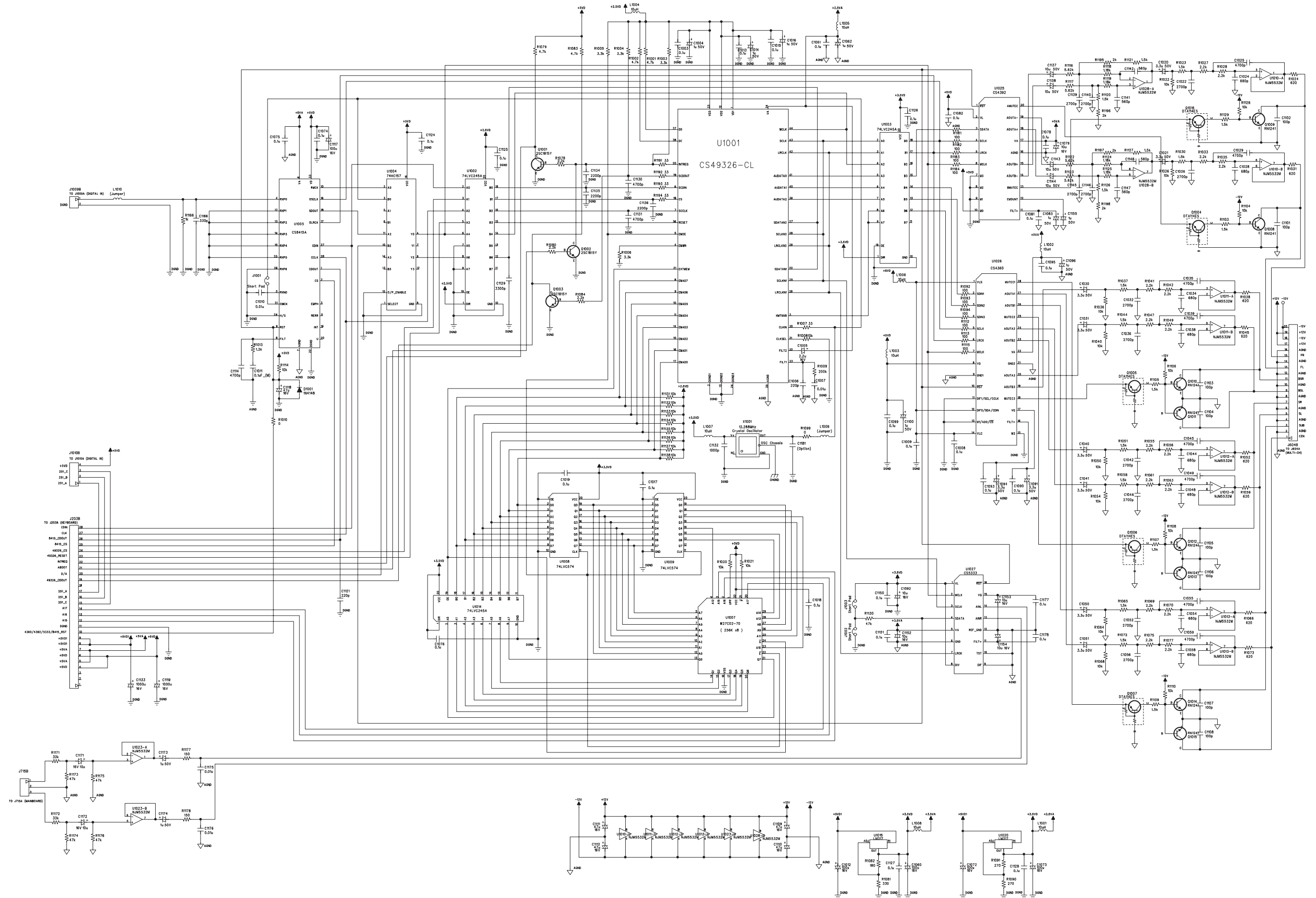


SCHEMATIC DIAGRAM DSP BOARD (ISSUE 8)



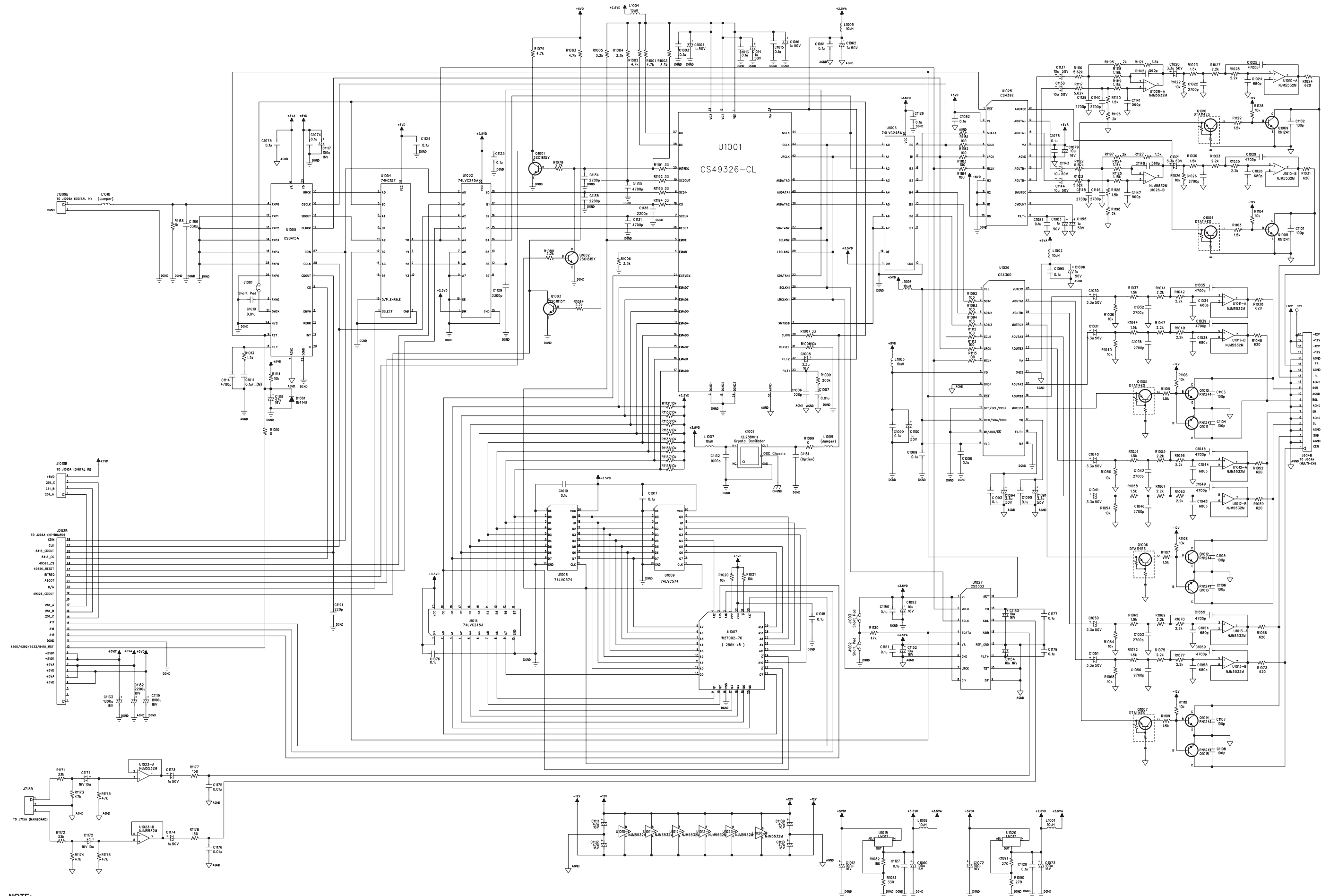
NOTE:
 1. RESISTORS, UNLESS OTHERWISE SPECIFIED, ARE 1/6W, 5%.
 2. ALL CERAMIC CAPACITORS, UNLESS OTHERWISE SPECIFIED, ARE 50V, 5%.

SCHEMATIC DIAGRAM DSP BOARD (ISSUE 9)



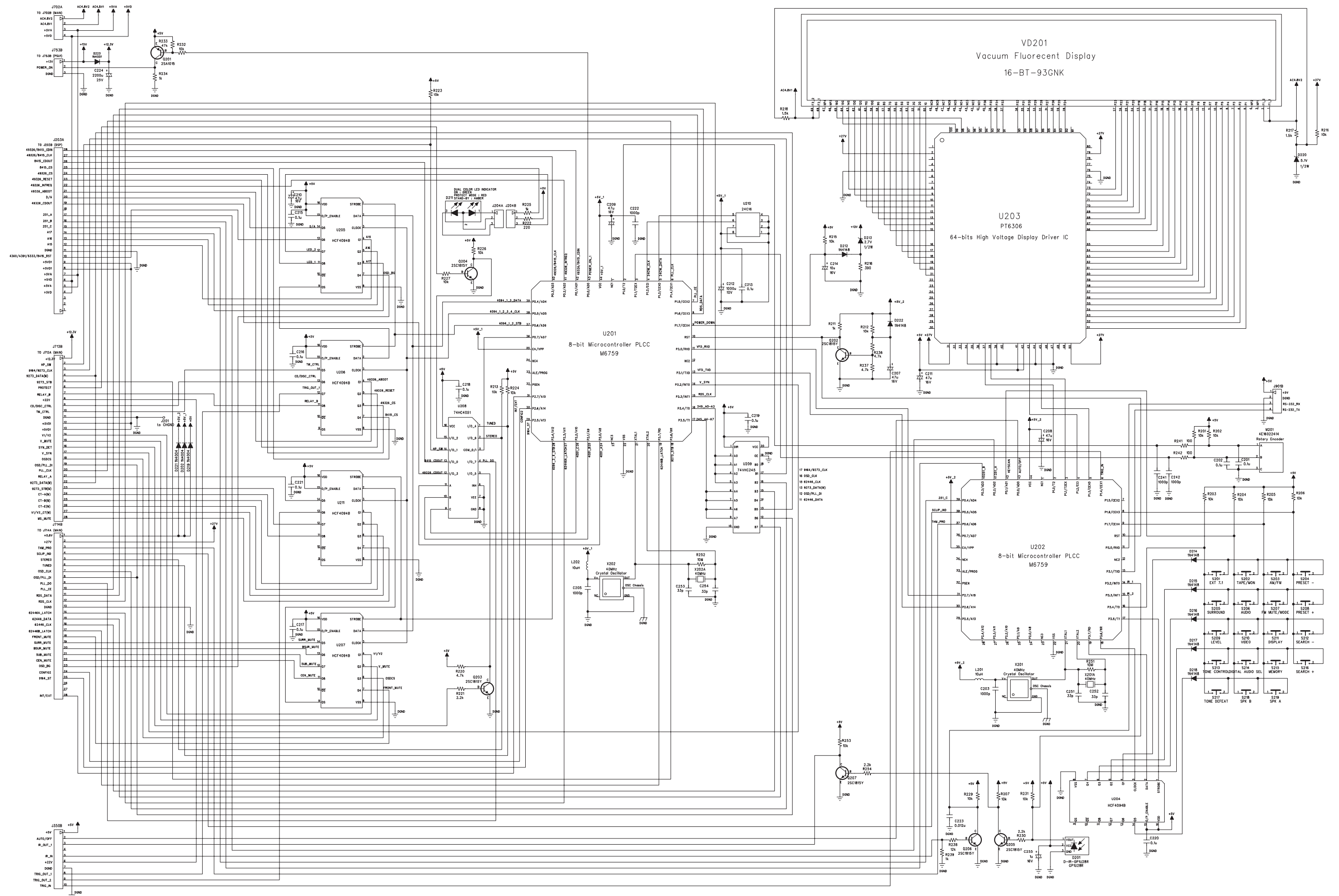
NOTE:
 1. RESISTORS, UNLESS OTHERWISE SPECIFIED, ARE 1/6W, 5%.
 2. ALL CERAMIC CAPACITORS, UNLESS OTHERWISE SPECIFIED, ARE 50V, 10%.

SCHEMATIC DIAGRAM DSP BOARD (ISSUE 10)



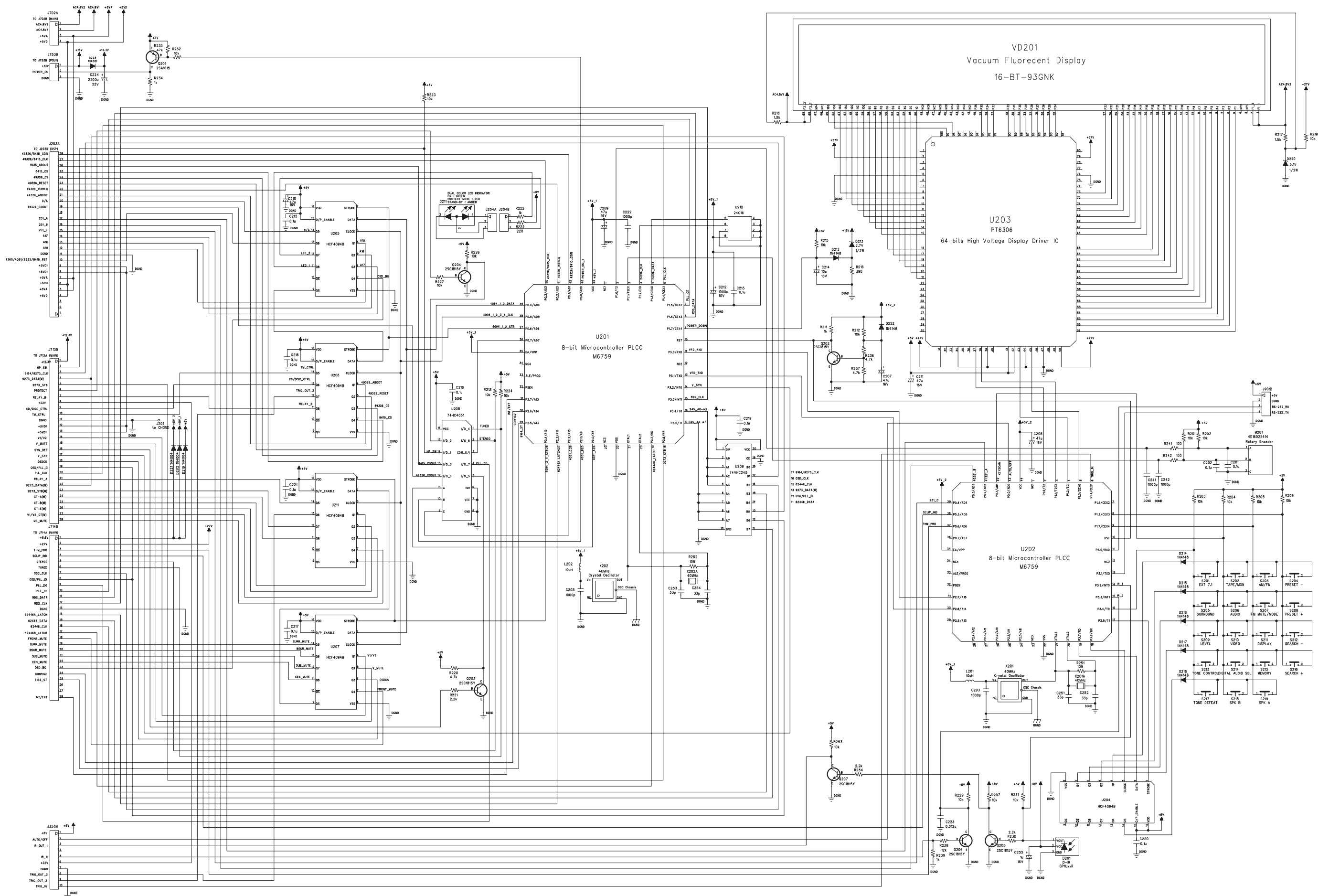
NOTE:
 1. RESISTORS, UNLESS OTHERWISE SPECIFIED, ARE 1/6W, 5%.
 2. ALL CERAMIC CAPACITORS, UNLESS OTHERWISE SPECIFIED, ARE 50V, 10%.

SCHEMATIC DIAGRAM KEYBOARD (ISSUE 8)



NOTE:
 1. RESISTORS, UNLESS OTHERWISE SPECIFIED, ARE 1/6W, 5%.
 2. ALL CERAMIC CAPACITORS, UNLESS OTHERWISE SPECIFIED, ARE 50V, 10%.

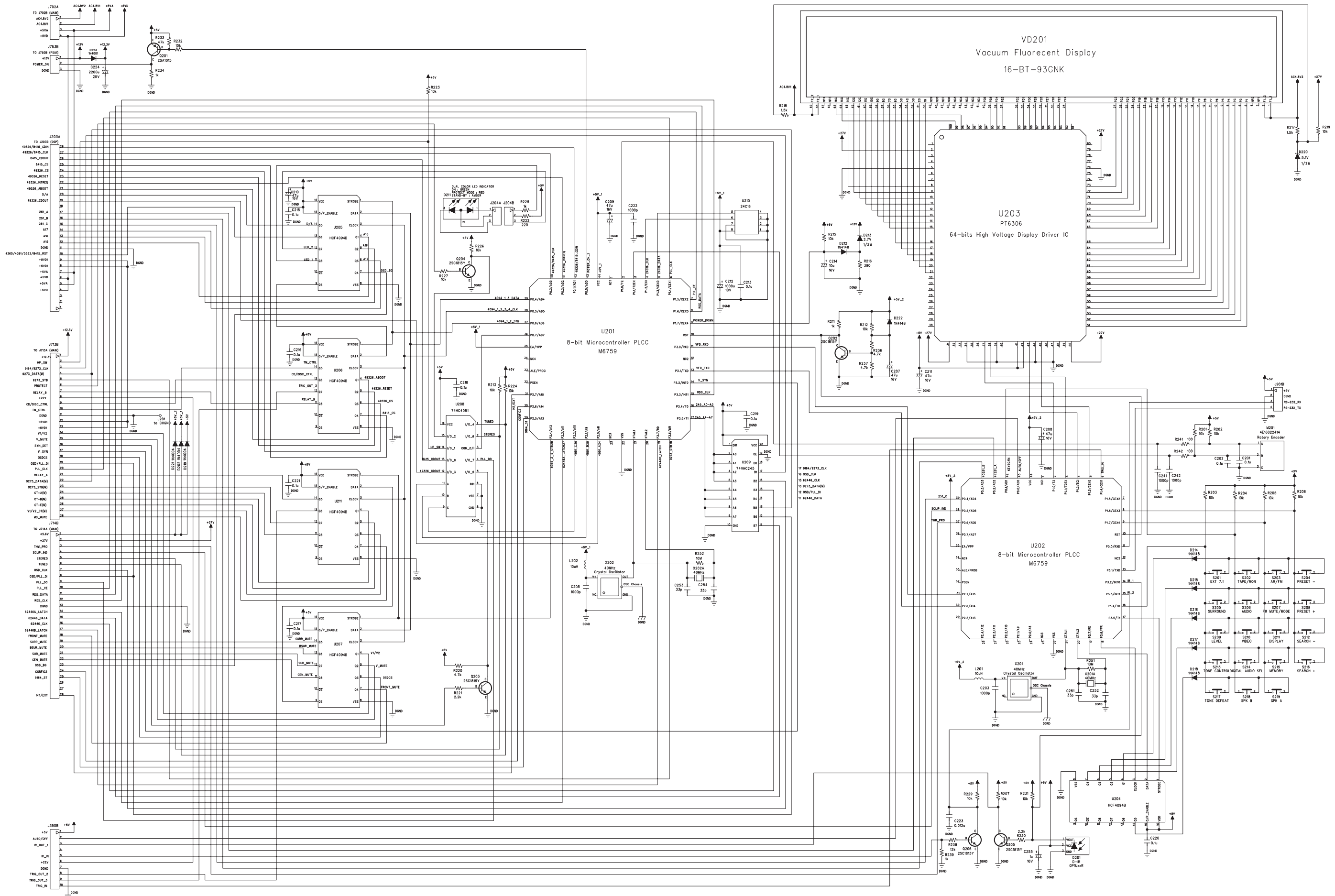
SCHEMATIC DIAGRAM KEYBOARD (ISSUE 9)



NOTE:
 1. RESISTORS, UNLESS OTHERWISE SPECIFIED, ARE 1/6W, 5%.
 2. ALL CERAMIC CAPACITORS, UNLESS OTHERWISE SPECIFIED, ARE 50V, 10%.

SCHEMATIC DIAGRAM

KEYBOARD (ISSUE 10)



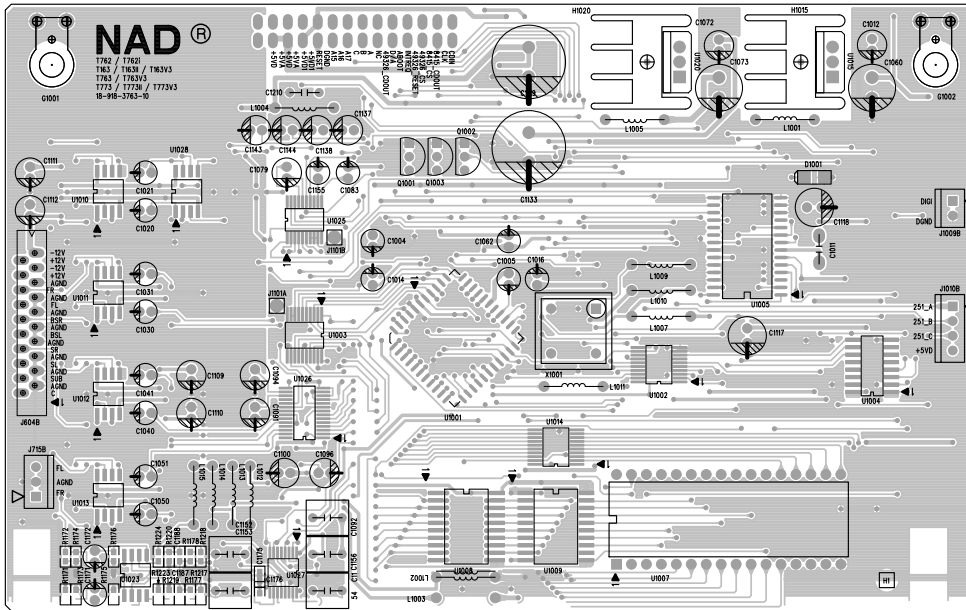
NOTE:
 1. RESISTORS, UNLESS OTHERWISE SPECIFIED, ARE 1/6W, 5%.
 2. ALL CERAMIC CAPACITORS, UNLESS OTHERWISE SPECIFIED, ARE 50V, 10%.

PCB LAYOUT DSP BOARD (FINAL SERVICE PARTS VERSION)

Part Number: 50-918-0762-90 T762/T762i DSP (For ALi Keyboards, backwards compatible via jumper option below)

Part Number: 50-918-1762-90 T762/T762i DSP (For ATMEL Keyboards, forwards compatible via jumper option below)

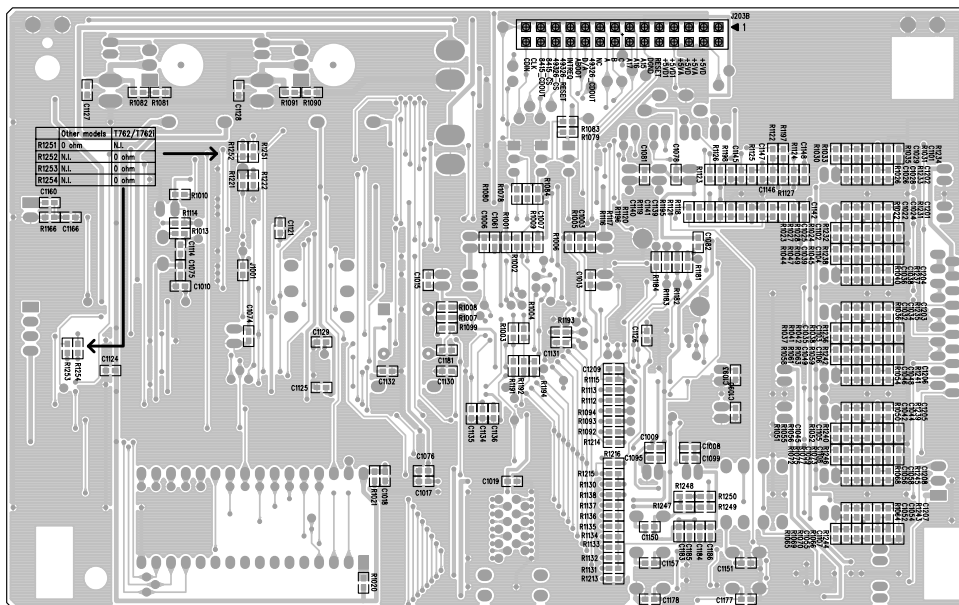
COMPONENT SIDE



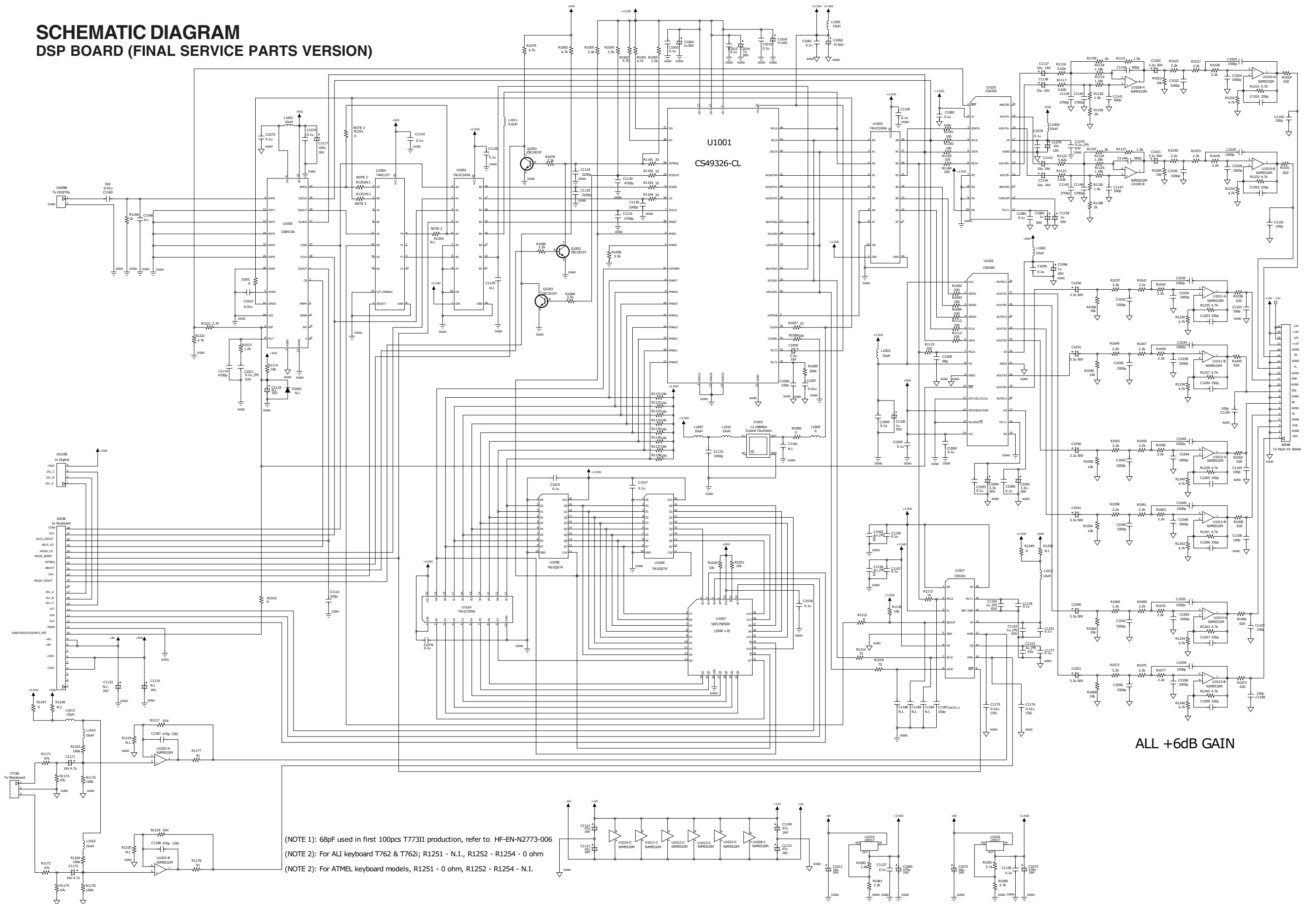
COPPER SIDE (SHOWING JUMPER OPTION)

For ALI keyboard T762 & T762i; R1251 - N.I., R1252 - R1254 - 0 ohm

For ATMEL keyboard models, R1251 - 0 ohm, R1252 - R1254 - N.I.



SCHEMATIC DIAGRAM DSP BOARD (FINAL SERVICE PARTS VERSION)



ALL +6dB GAIN

(NOTE 1): 68pF used in first 100pcs T773II production, refer to HF-EN-N2773-006
 (NOTE 2): For All keyboard T762 & T762i; R1251 - N.I., R1252 - R1254 - 0 ohm
 (NOTE 2): For ATMEL keyboard models, R1251 - 0 ohm, R1252 - R1254 - N.I.

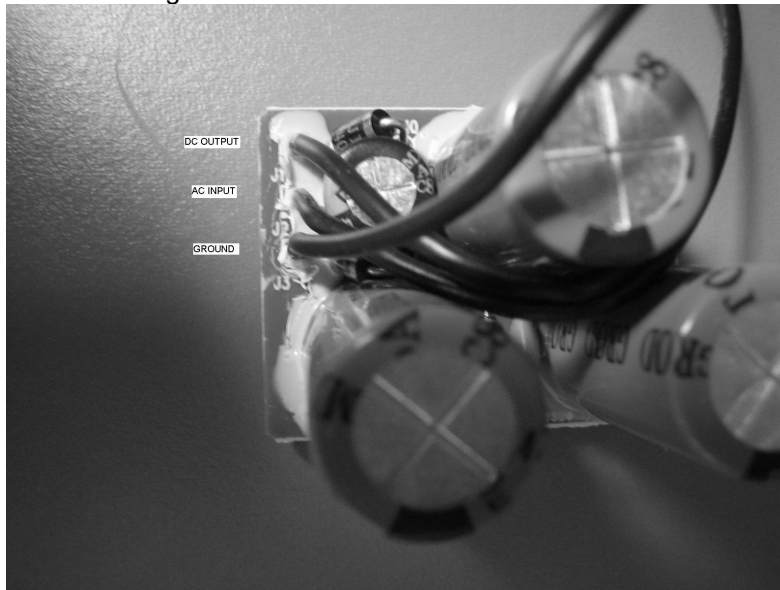
NOTE:
 1. RESISTORS, UNLESS OTHERWISE SPECIFIED, ARE 1/6W, 5%.
 2. ALL CERAMIC CAPACITORS, UNLESS OTHERWISE SPECIFIED, ARE 50V, 5%.

Service Hint for replacing Q701 in T752/T762 with 95-0907627-12-01

- 1 Q701 module with flying leads
- 1 black foam block, with double sided tape on two sides
- 1 set of instructions

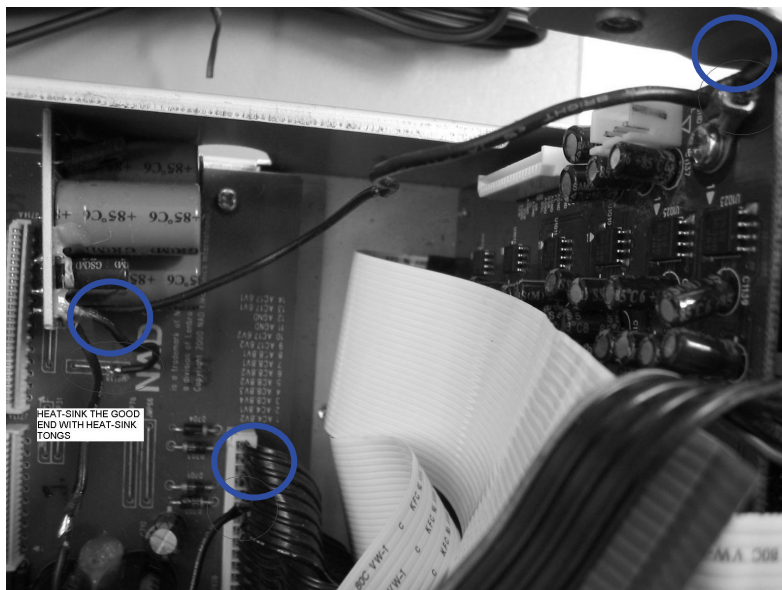
When Q701 becomes defective, the T752 will turn on, but the VFD will not light up. The purpose of replacing the transistor Q701 with a module is to facilitate a more reliable and quicker repair process with a minimum of parts disturbance, if and when Q701 becomes defective.

- **J1** is DC output
- **J2** is AC input
- **J3** is ground

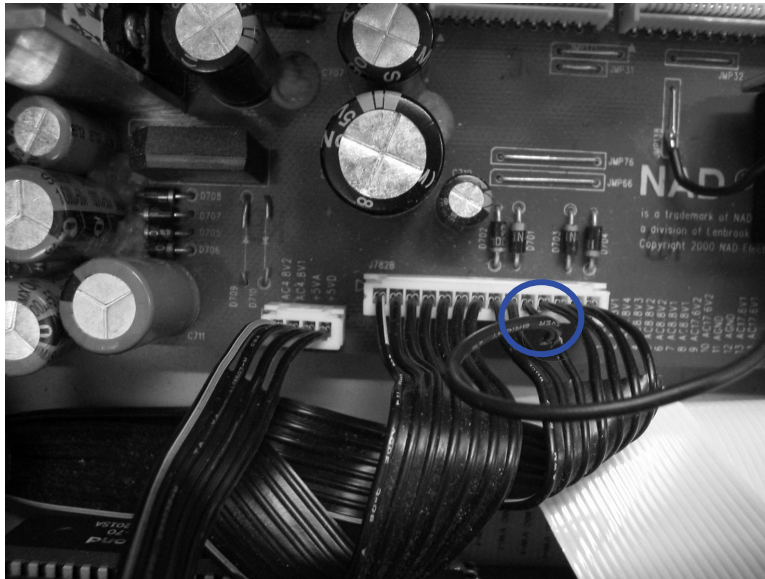


95-0907627-12-01

- Connect the long ground wire to the DSP ground, top right hand side of the DSP module
- Connect the DC Output to jumper **JMP138** be sure not to heat up the solder connections on the bottom of the main PCB: Use heat-sink tongs.
- Tap into the AC Input to the AC source wire **#10** of cable **AC17.6V2**



Another view of tapping into the AC Input source wire #10 of cable AC17.6V2



- Cut out the following parts:
 1. Diodes **D709** and **D710**
 2. **Q701** (cut out or pull out)
 3. Cut out **R702**

