

SERVICE MANUAL

ADDENDIUM (W/O IPOD)



BEFORE SERIAL NUMBER: T79T765G01306

T 765

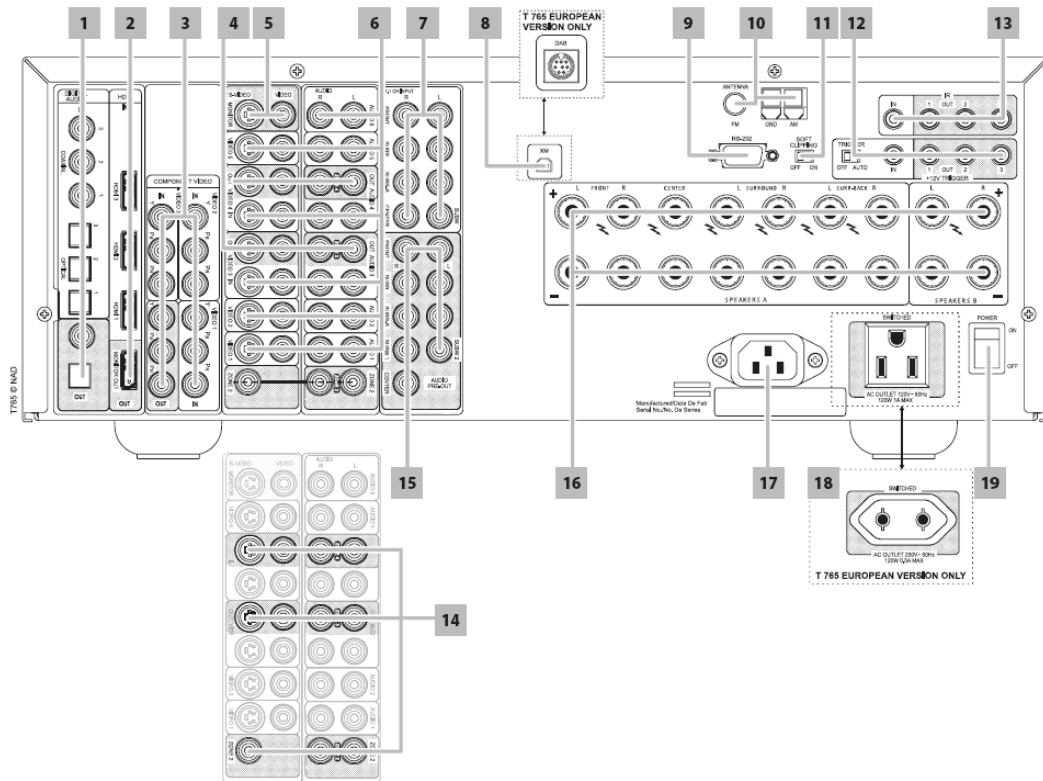
Surround Sound Receiver

T 765

Surround Sound
Receiver

REAR PANEL VIEW

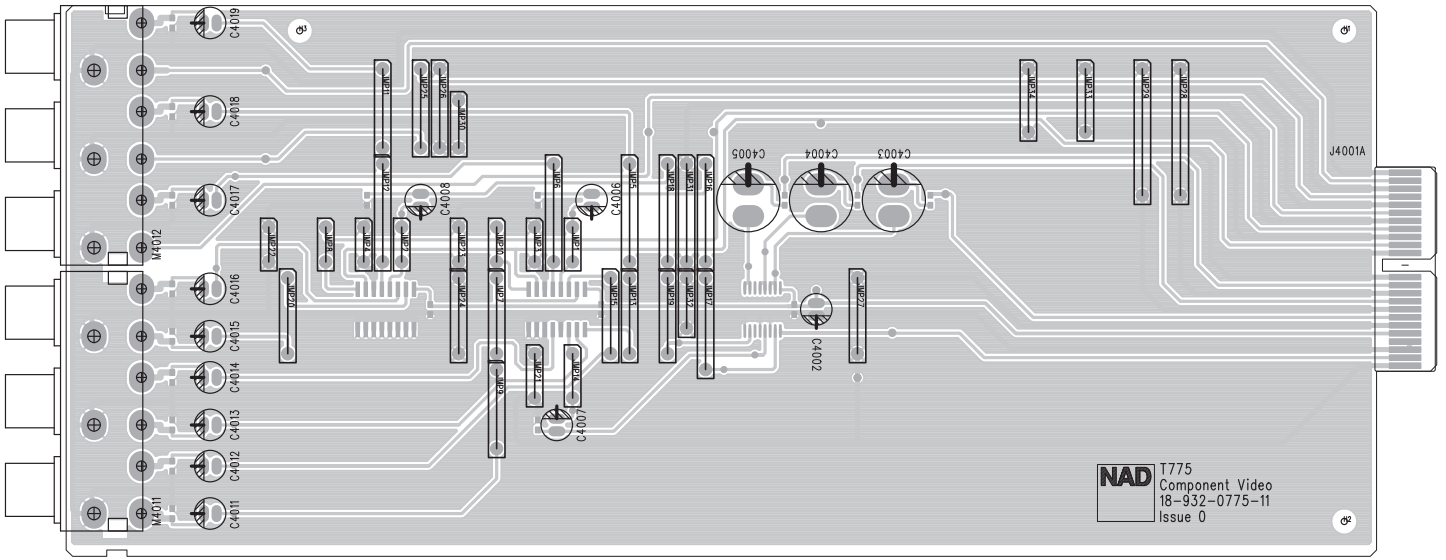
REAR PANEL (FOR NO IPOD)



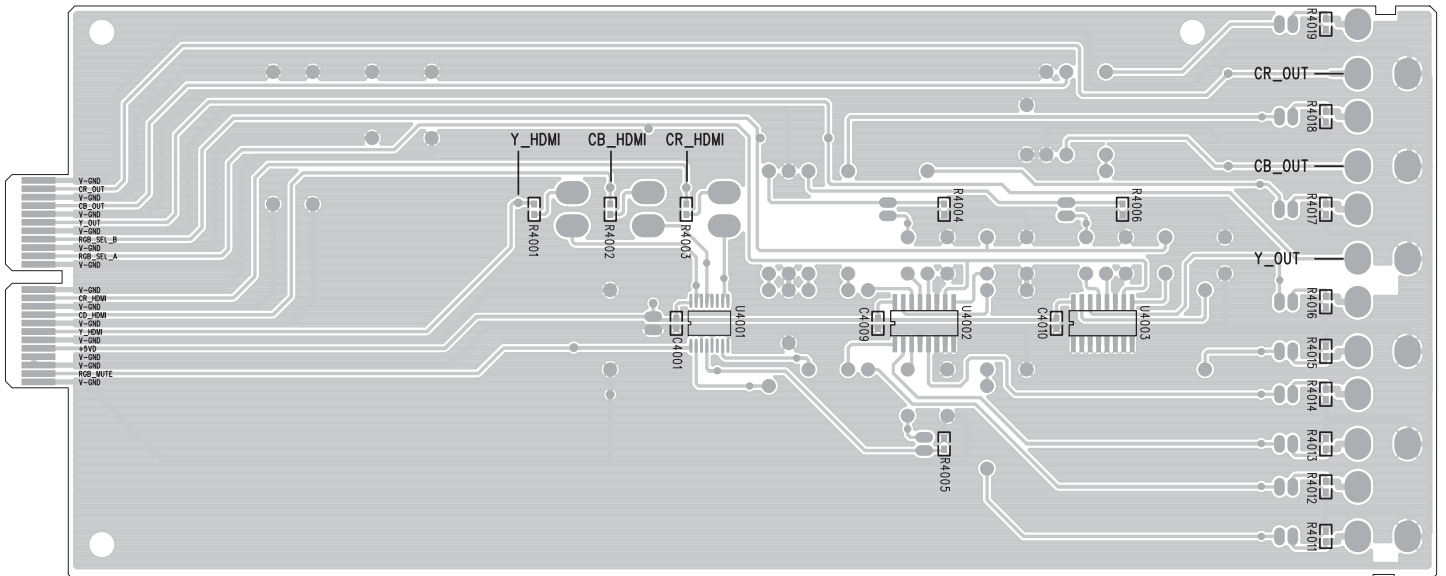
- | | | |
|---------------------------|-------------------------|---------------------------|
| 1. DIGITAL AUDIO IN/OUT | 7. 7.1 CH INPUT | 13. IR IN/OUT |
| 2. HDMI | 8. XM MODULE INPUT(AH) | 14. ZONE 2,3,4 |
| 3. COMPONENT IN &OUT | DAB MODULE INOUT(C,CT) | 15. AUDIO PREOUT |
| 4. AUDIO 3/4 OUT | 9. RS-232 | 16. SPEAKERS A, SPEAKER B |
| 5. MONITOR(S-VIDEO,VIDEO) | 10. FM,AM ANTENNA INPUT | 17. AC POWER INLET |
| 6. AUDIO/VEDIO IN | 11. SOFT CLIPPING | 18. SWITCHED AC OUTLET |
| | 12. +12V TRIGGER OUT | 19. POWER |

PCB LAYOUT (FOR NO IPOD)

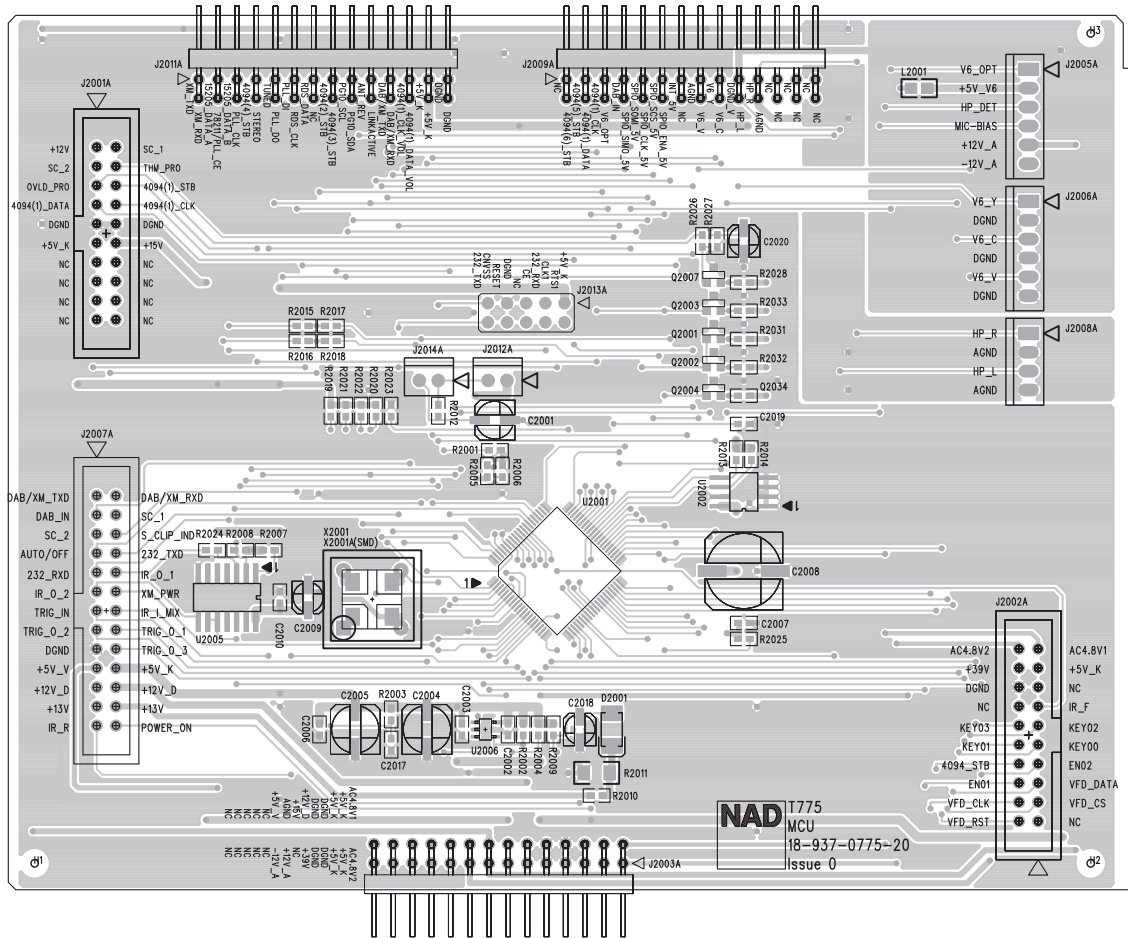
COMPONENT BOARD-COMPONENT SIDE



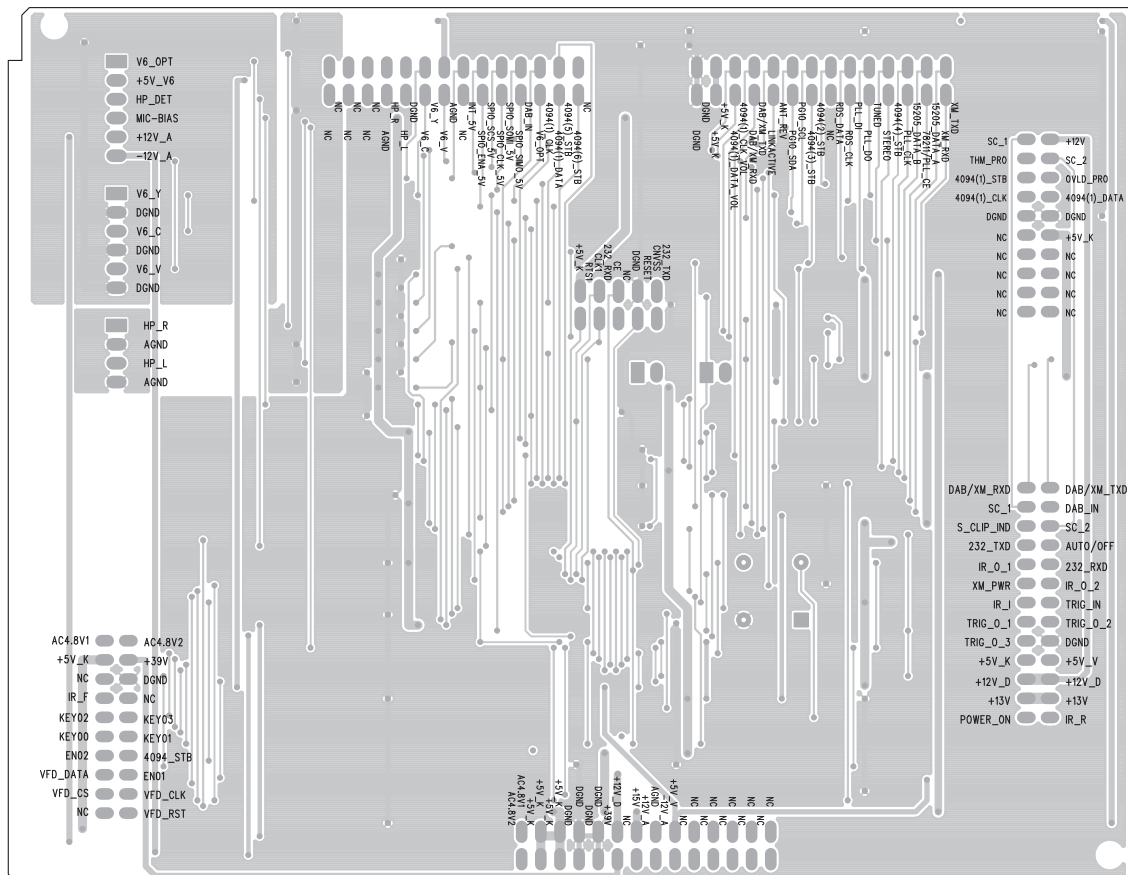
COMPONENT BOARD-COPPER SIDE



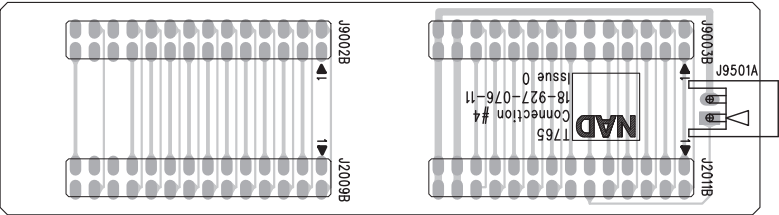
MCU BOARD-COMPONENT SIDE



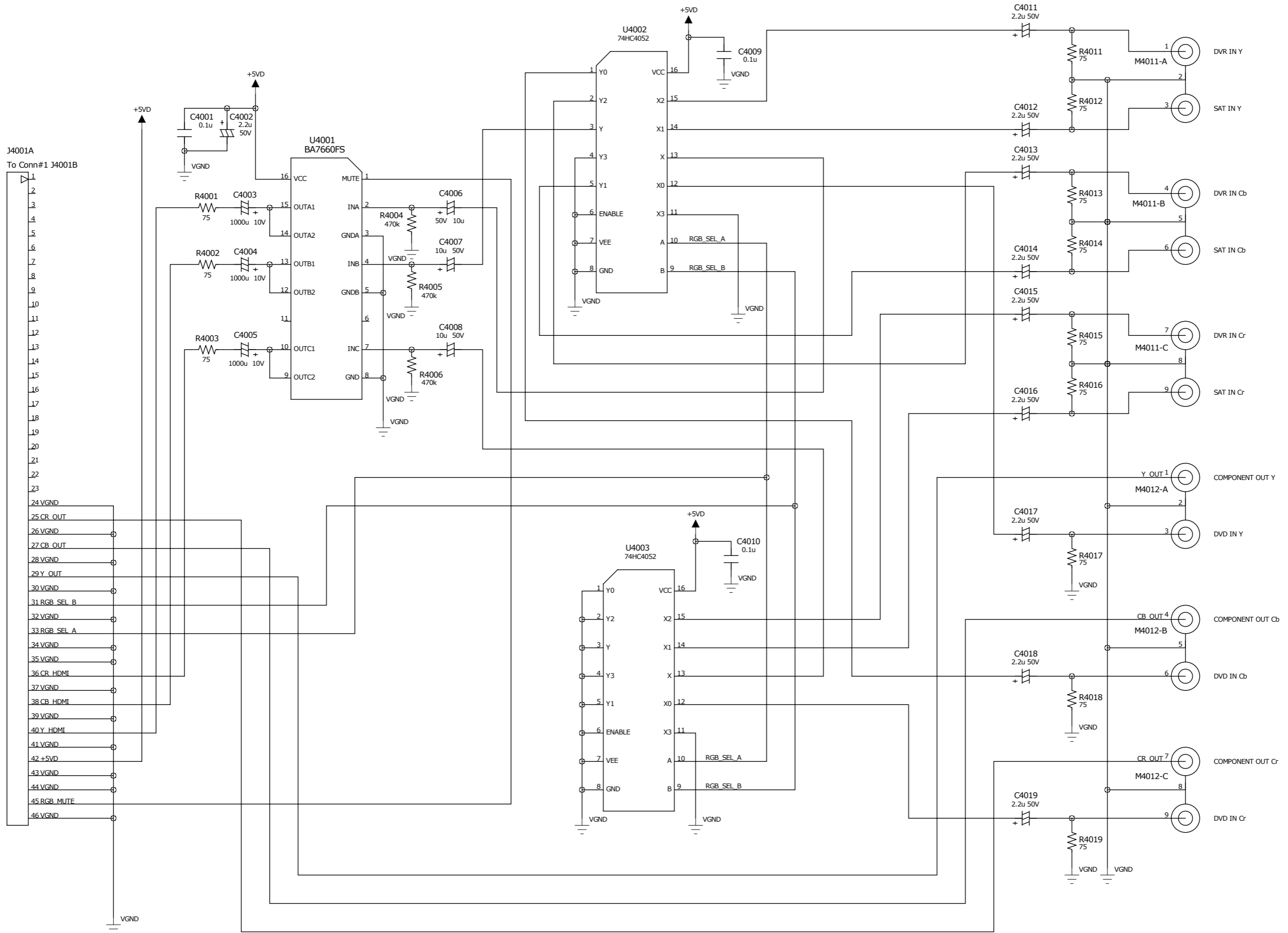
MCU BOARD-COPPER SIDE



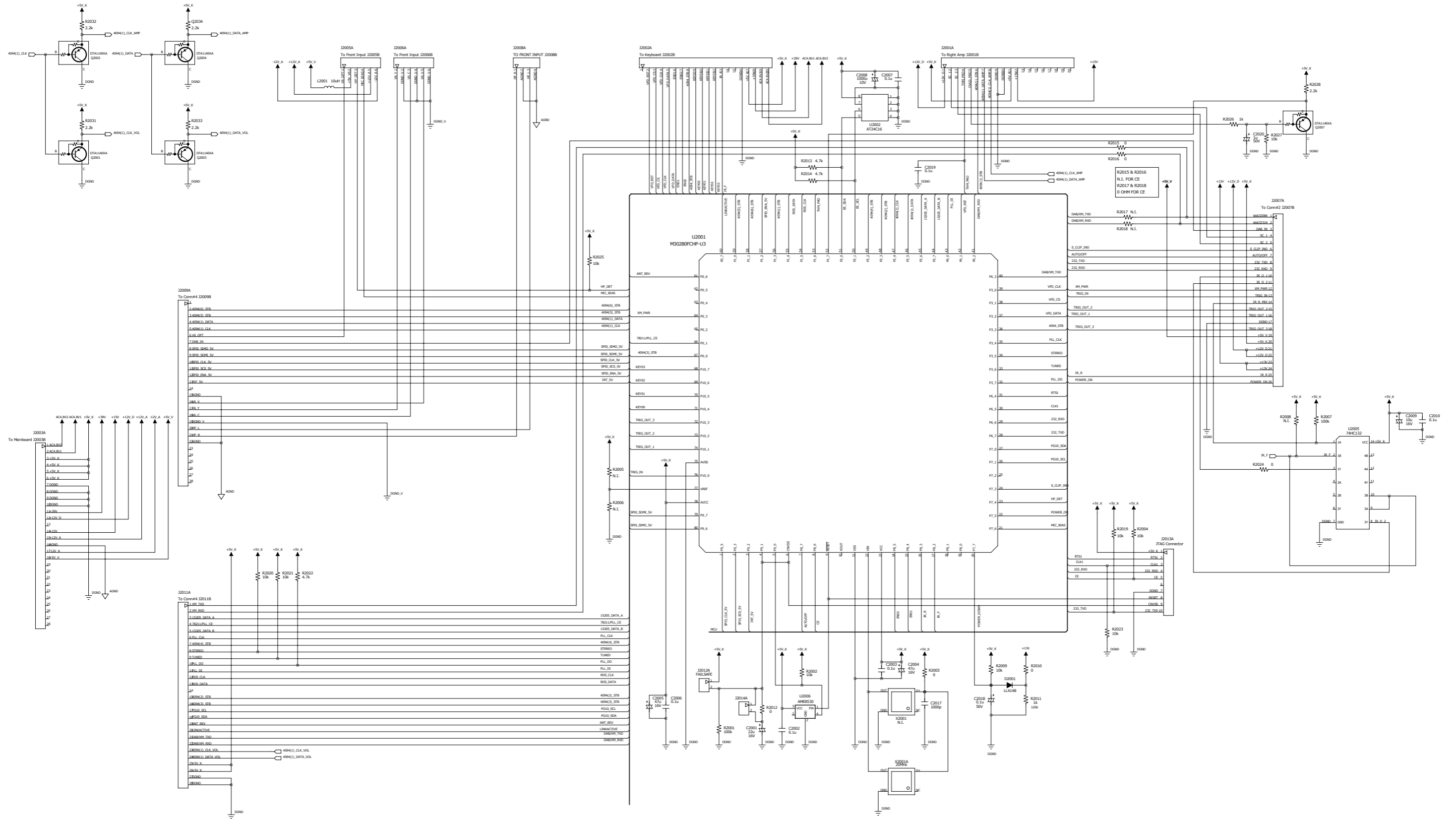
CONNECTOR-4 BOARD-COMPONENT SIDE



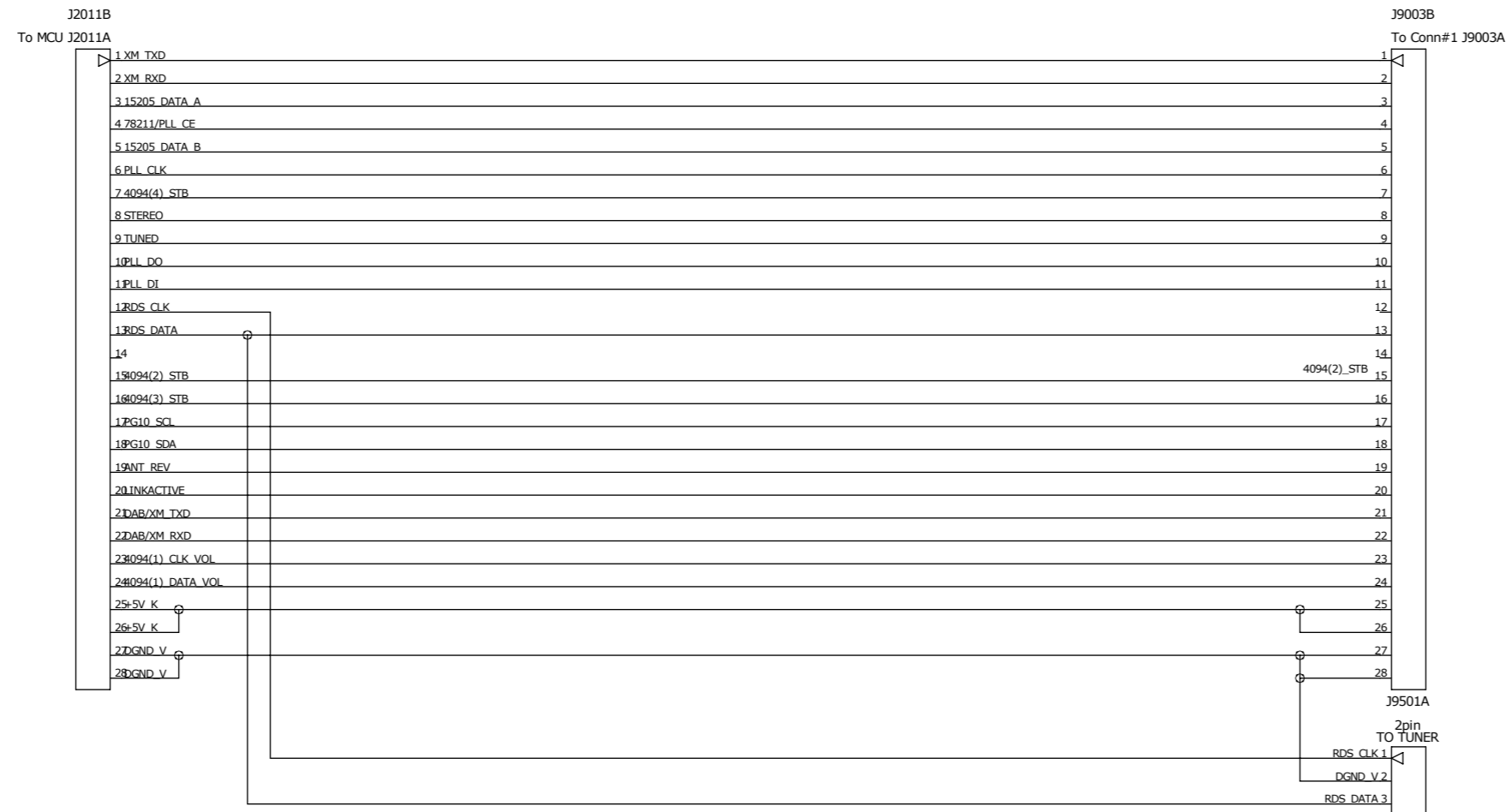
SCHEMATIC DIAGRAM (FOR NO IPOD) COMPONENT VIDEO



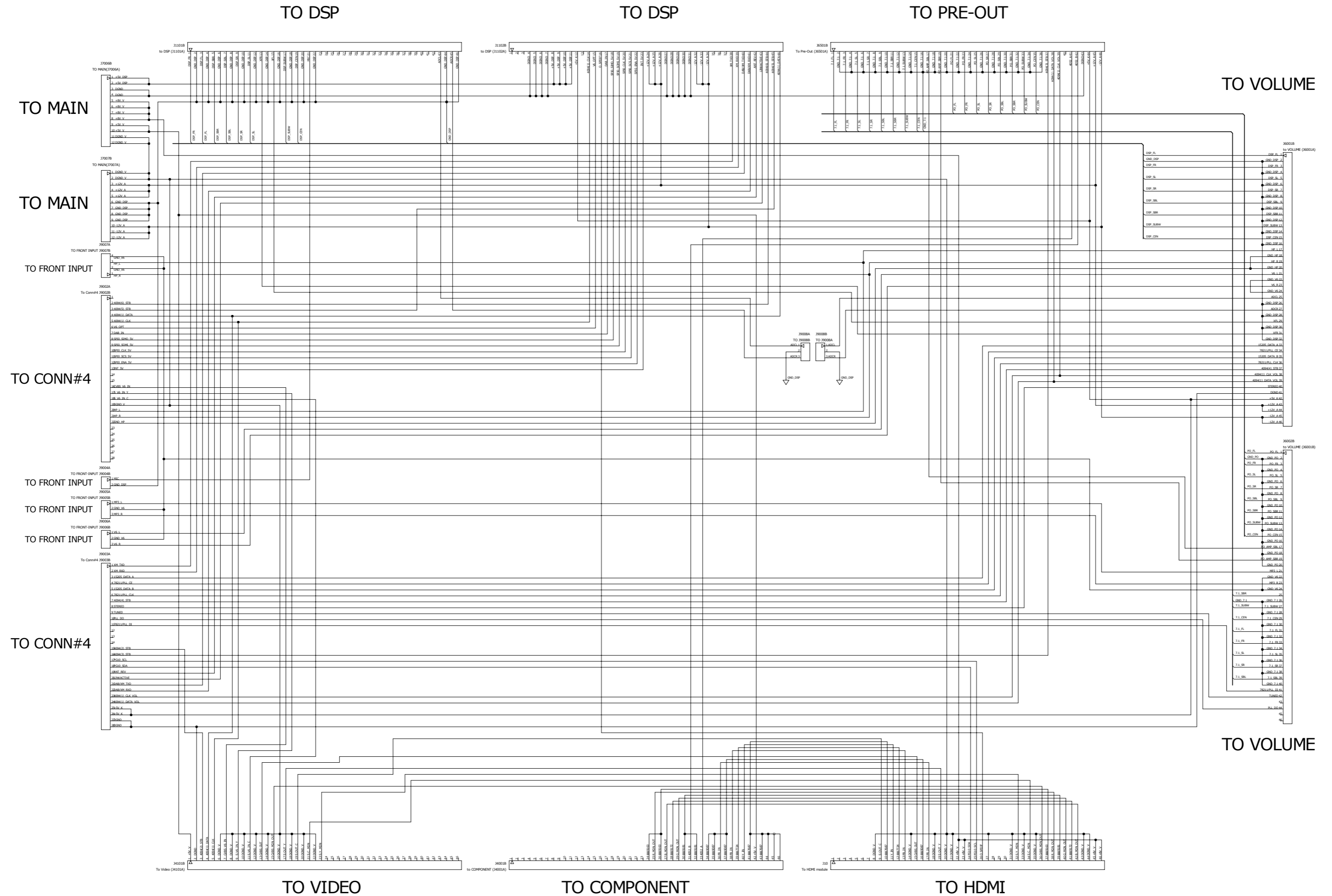
MCU



CONNECTOR-4



CONNECTOR-1



ELECTRICAL PARTS LIST (FOR NO IPOD)

<u>Reference</u>	<u>Database Part No.</u>	<u>DESCRIPTION</u>
** FOR NO IPOD VERSION, COMPONENT BOARD / MCU ASSEMBLY HAVE COMPONENTS DIFFERENCE.		
<u>COMPONENT VIDEO BOARD</u>		
<i>PCB ASSEMBLY</i>	27-932-0765-90	T765 Component Video Board Assembly
<i>CAPACITORS</i>		
C4006-4008	03-002-0129-00	CAP ELEC SS 10uF 16V 20% 85C
C4003-4005	03-002-0133-00	CAP ELEC GS 1000uF 10V 20% 85C RAD ST5
C4002 C4011-4019	03-002-0157-00	CAP ELEC SS 2.2uF 50V 20% 85C RAD
<i>JACKS</i>		
M4011 M4012	15-003-0033-90	RCA JACK 6 R-BL-G/R-BL-G PCB MOUNT GOLD
<i>SMD ICS</i>		
U4002-4003	01-012-0067-00	IC LOGIC ANALOG MULTIPLEXER/DE MULTIPLEXER SMD SOIC-16 74HC4052D
U4001	01-026-0001-90	IC VIDEO 3-CHANNEL 75 OHM DRIVER SSOP BA7660FS
<i>RES SMDISTORS</i>		
R4004-4006	02-007-0352-00	RES SMD 470K OHM 5% 1/16W 0603
R4001-4003 R4011-4019	02-007-0357-00	RES SMD 75 OHM 5% 1/16W 0603
<i>SMD CAPACITORS</i>		
C4001 C4009-4010	03-009-0075-00	CAP CER SMD 0.1uF 50V 20% Y5V 0603
<i>JUMPERS</i>		
JMP5-6 JMP12 JMP16-18 JMP28-29 JMP31 JMP35-36	17-016-0077-00	Jumper wire Dia. 0.5mm L=52.0mm
JMP1-4 JMP7-11 JMP13-15 JMP19-27 JMP30 JMP32-34 JMP37-38	17-016-0080-90	Jumper Wire Dia. 0.5mm For L Smaller than 14mm
<u>MCU BOARD</u>		
<i>PCB ASSEMBLY*AH</i>	27-937-0775-90	T775AH MCU Board Assembly
<i>PCB ASSEMBLY*C,CT</i>	27-946-0775-90	T775C MCU Board Assembly
<i>SMD ICS</i>		
U2006	01-008-0007-90	IC MICROPOWER UP WATCH DOG TIMER 2.93V SOT-25 AME8530AEEVEFX29Z
U2001	01-010-0025-90IC	M30280FCHP-U3 16-BIT MCU 128K ROM 12K RAM QFP 80P6Q-A
U2002	01-011-0034-90	IC LE030401 AT24C16-AN-2.7 ATMEL
U2005	01-012-0073-90	IC 74HC132D LOGIC QUAD 2-INPUT NAND SCHMITT TRIGGER SMD 14 PINS SOIC
<i>RES SMDISTORS</i>		
R2026	02-007-0042-00	RES SMD 1K OHM 0603 5%
R2011	02-007-0094-00	RES SMD 1K OHM 1/4W 1206 1%
R2013-2014 R2022 R2028 R2044	02-007-0139-00	RES SMD 4.7K OHM 0603 5%
R2004 R2009 R2002 R2019-2021 R2023	02-007-0157-00	RES SMD 10K OHM 0603 1%
R2025 R2027 R2043		
R2001 R2007	02-007-0267-00	RES SMD 100K OHM 5% 1/16W 0603

R2003 R2010 R2012 R2015-2016 R2024 R2042*AH	02-007-0288-00	RES SMD 0 OHM 5% 1/16W 0603
R2003 R2010 R2012 R2017-2018 R2024 R2042*C,CT	02-007-0288-00	RES SMD 0 OHM 5% 1/16W 0603
R2031-R2034	02-007-0292-00	RES SMD 2.2K OHM 1% 1/16W 0603
SMD CAPACITORS		
C2002-2003 C2006-2007 C2010 C2019 C2033	03-009-0075-00	CAP CER SMD 0.1uF 50V 20% Y5V 0603
C2017	03-009-0112-00	CAP CER SMD 1nF 50V 10% X7R 0603
C2009	03-009-0136-00	CAP ELEC SMD 10uF 16V 20% 4X5.4
C2008	03-009-0138-00	CAP ELEC SMD 1000uF 10V 20% 10X10.5
C2018	03-009-0139-00	CAP ELEC SMD 0.1uF 50V 20% 4X5.4
C2001	03-009-0140-00	CAP ELEC SMD 22uF 16V 20% 5X5.4
C2004-2005	03-009-0143-00	CAP ELEC SMD 47uF 50V 20% 6.3X7.7
C2020	03-009-0153-00	CAP ELEC SMD 1uF/50V ±20% B CASE 4 X 5.4
SMD DIODES		
D2001	04-006-0021-90	SMD Diode LL4148 SOD80 RES SMD
SMD TRANSISTORS		
Q2007	05-004-0020-00	SMD Transistor T3904 SOT-23CAP ELEC SMD
Q2012	05-004-0035-90	TRANSISTOR SS NPN HFE30 250MHz SPT DTC114EKAT146
Q2001-Q2004	05-004-0037-90	TRANSISTOR SS PNP HFE 30 250MHz SPT DTA114EKAT146
SMD INDUCTOR		
L2001	07-007-0019-90	IND SMD 10uH 10% 0805 YT201212T-100K-S
SMD OSCILLATOR		
X2001A	14-004-0019-90	CRYSTAL OSCILLATOR 20.000MHz 5V 50ppm 15pF SMD

SERVICE MANUAL

ADDENDIUM (W/O IPOD)

T 765

Surround Sound Receiver