

A

B

C

D

PC BOARD VIEWS-1

U01 AMPLIFIER PC BOARD (NAAF-8294 & NAETC-8305)

1

Connection of jumper wire

Component side

NAAF-8294

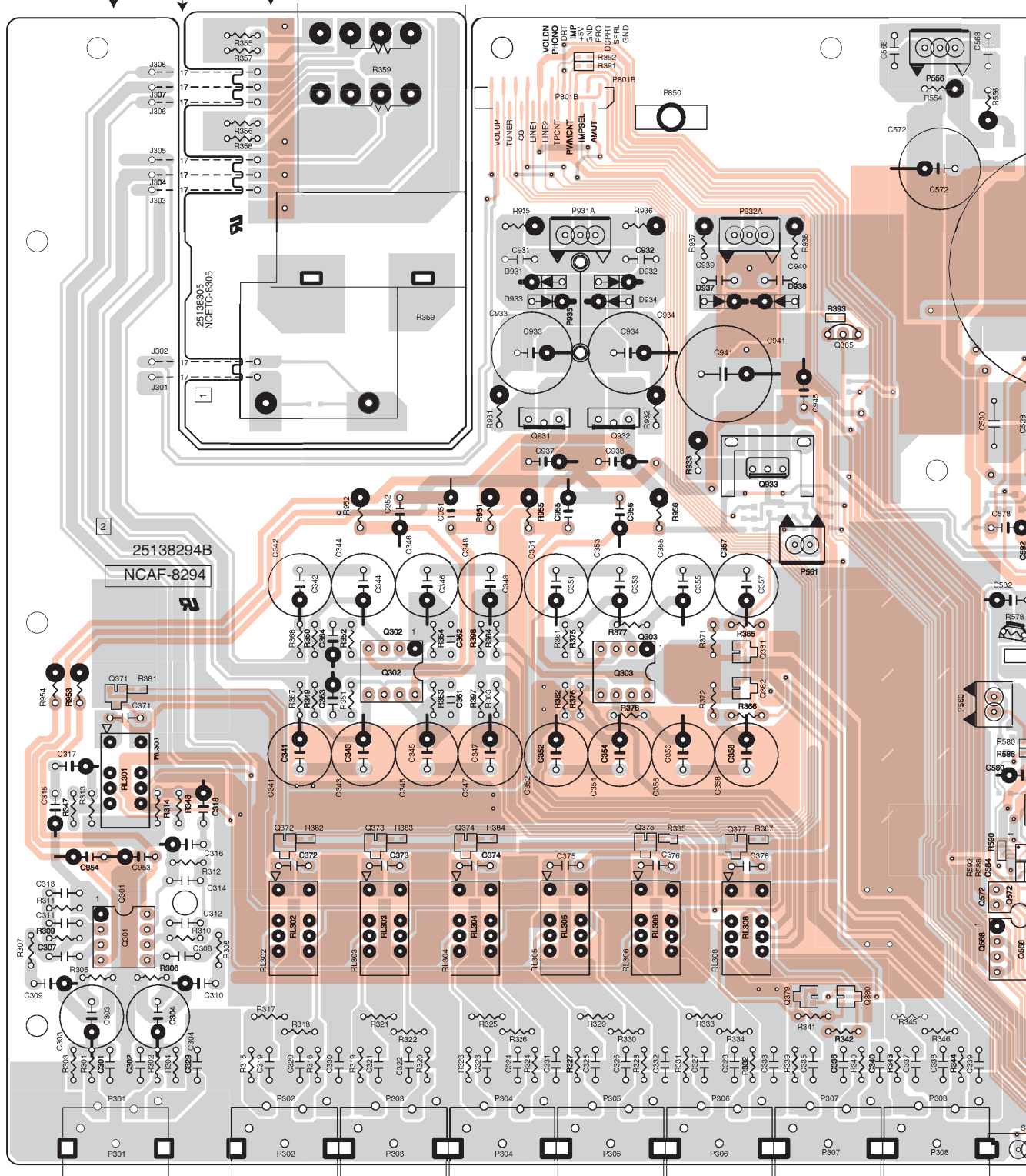
NAETC-8305

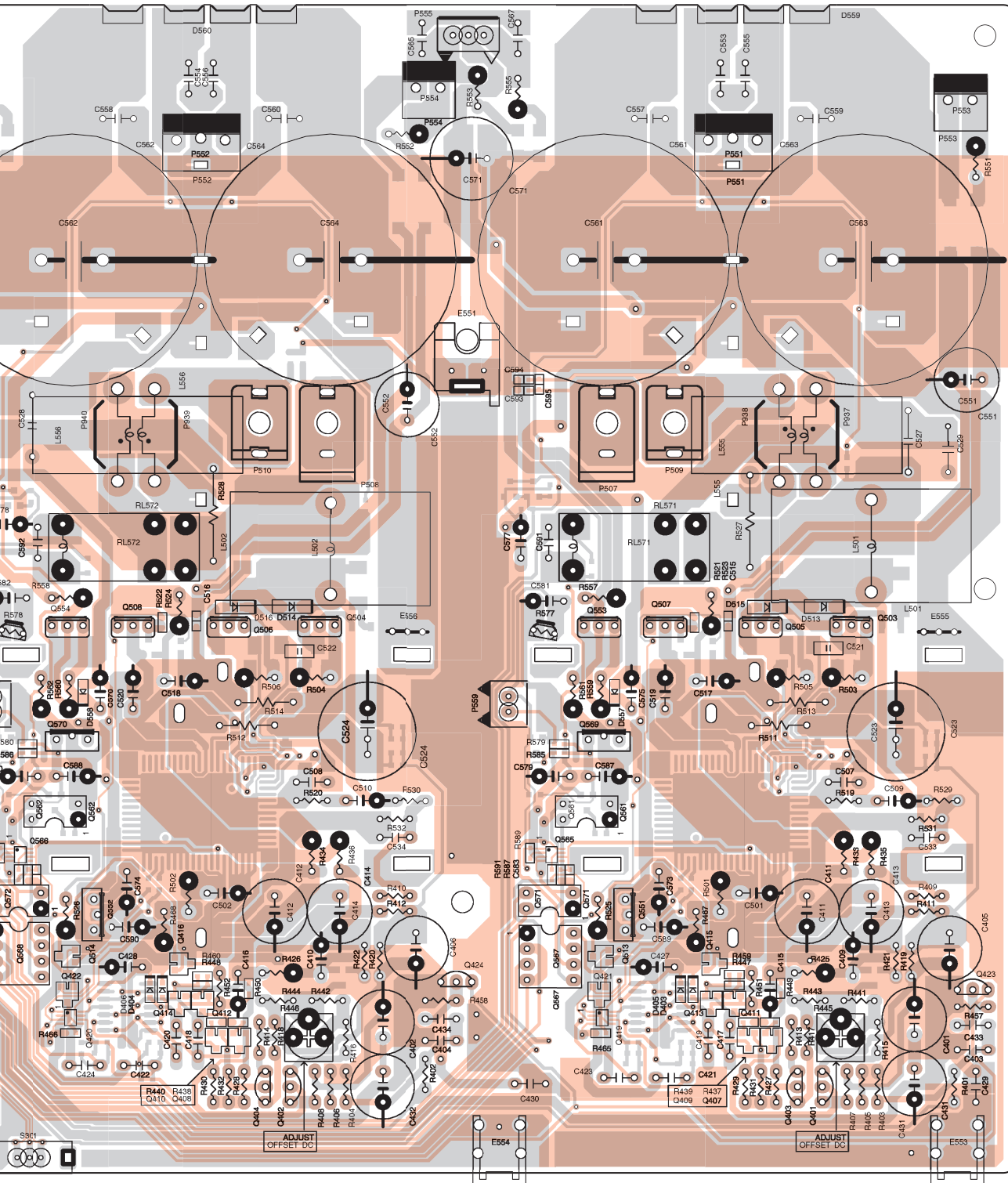
2

3

4

5



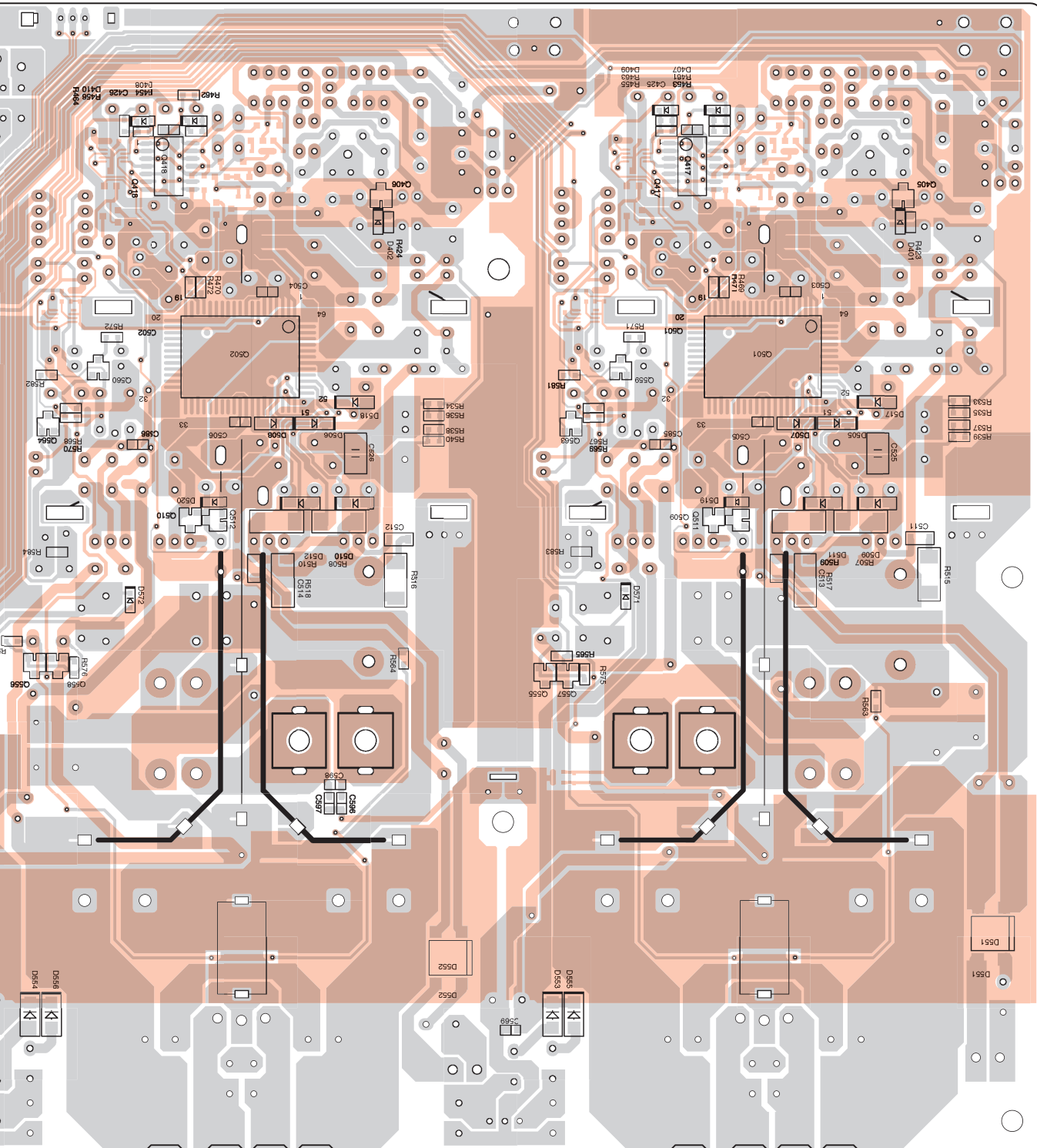


E

F

G

H



A

B

C

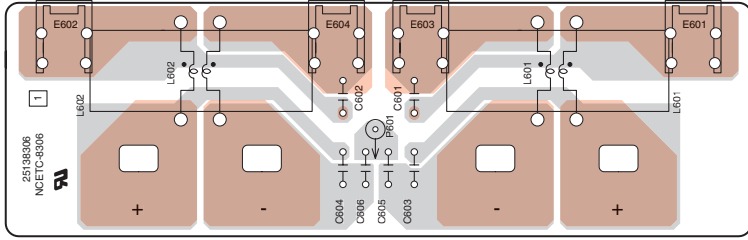
D

PRINTED CIRCUIT BOARD VIEWS-3

U03 SPEAKER FILTER PC BOARD (NAETC-8306)

1

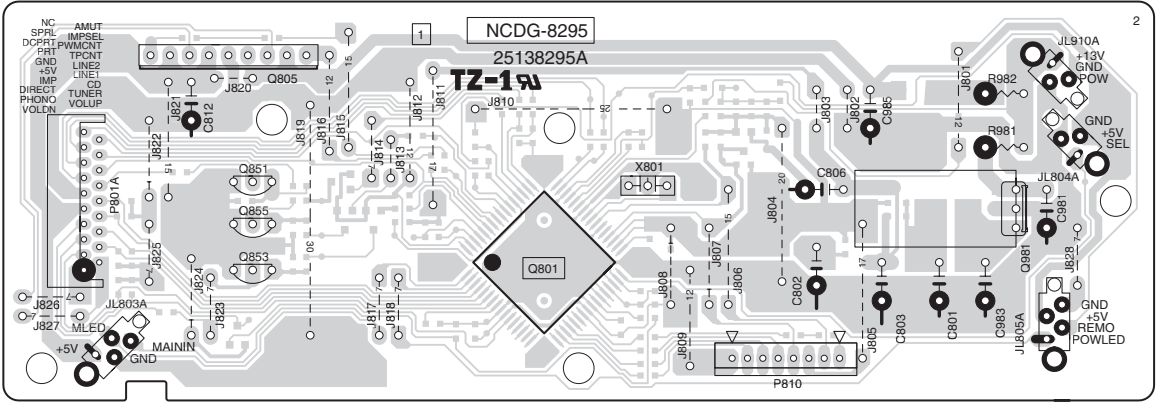
Soldering side



2

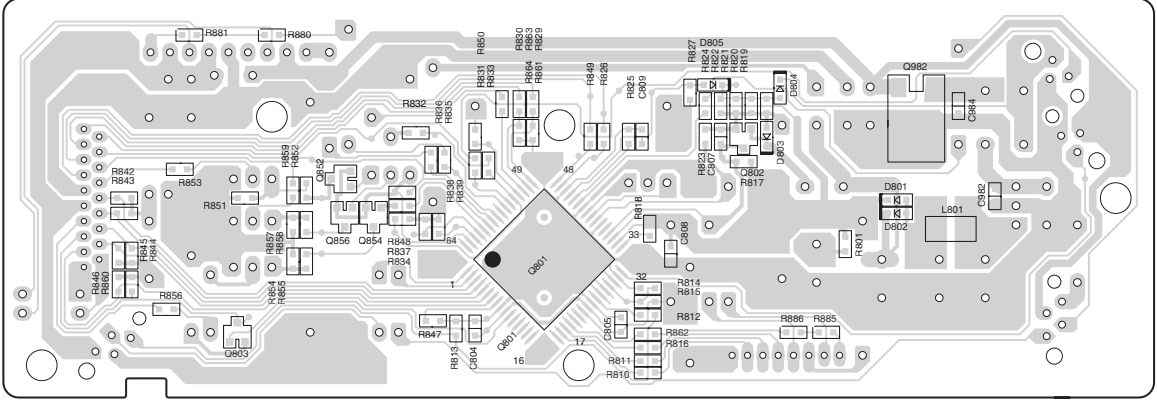
U05 MICROPROCESSOR PC BOARD (NADG-8295)

Component side



3

Soldering side



5

A

B

C

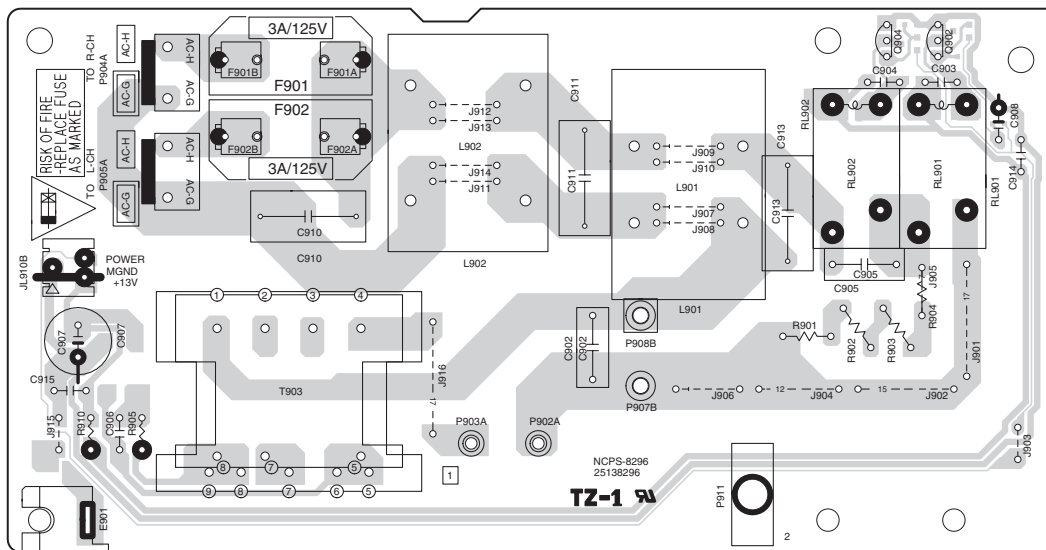
D

PRINTED CIRCUIT BOARD VIEWS-4

U06 POWER SUPPLY PC BOARD (NAPS-8296)

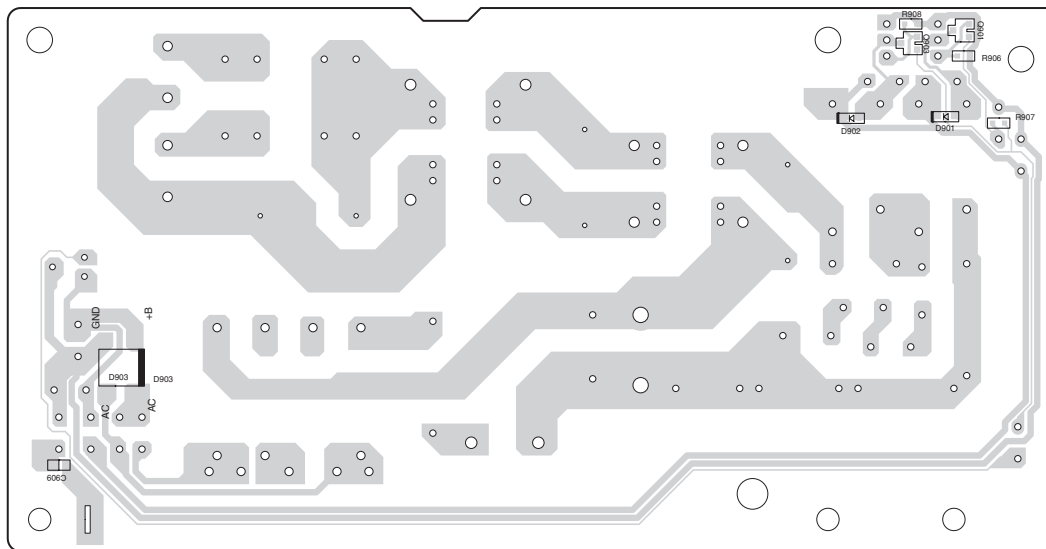
1

Component side



2

Soldering side



3

4

5

A

B

C

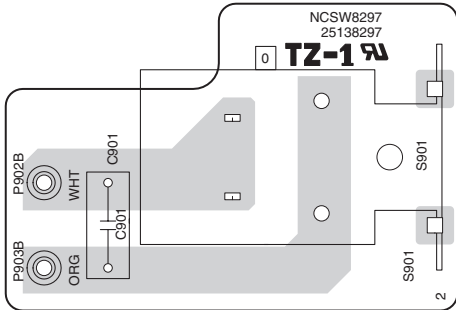
D

PRINTED CIRCUIT BOARD VIEWS-5

U07 POWER SWITCH PC BOARD (NASW-8297)

1

Component side



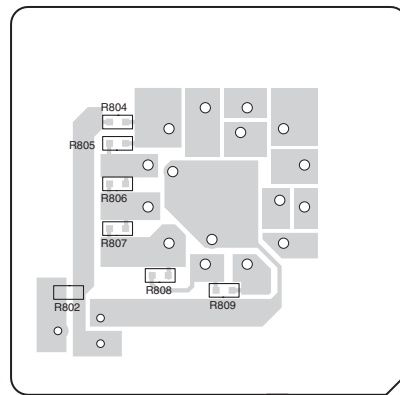
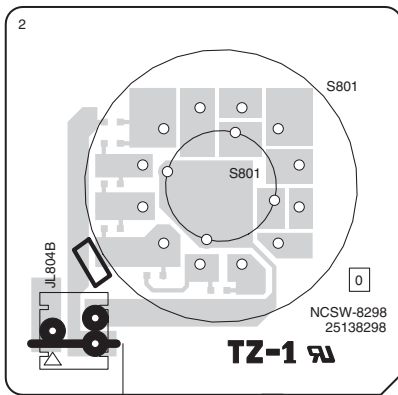
2

U08 SELECTOR SWITCH PC BOARD (NASW-8298)

3

Component side

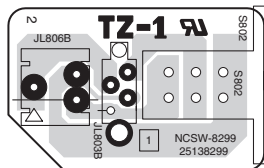
Soldering side



U09 DIRECT SWITCH PC BOARD (NASW-8299)

4

Component side



5

A

B

C

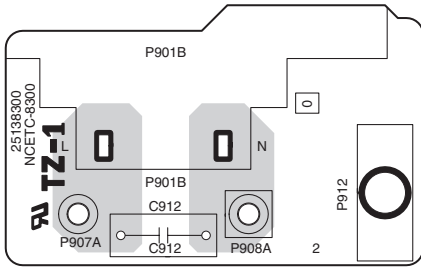
D

PRINTED CIRCUIT BOARD VIEWS-6

1

U10 INLET PC BOARD (NAETC-8300)

Component side

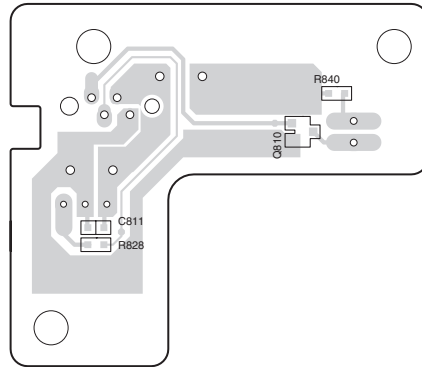
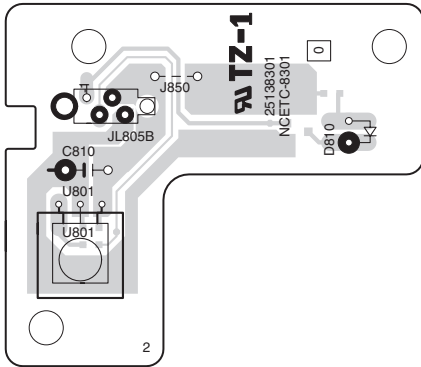


2

U11 REMOTE SENSOR PC BOARD (NAETC-8301)

Component side

Soldering side

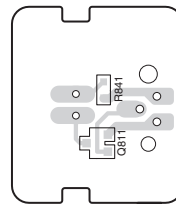
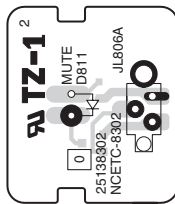


3

U12 MUTING LED PC BOARD (NAETC-8302)

Component side

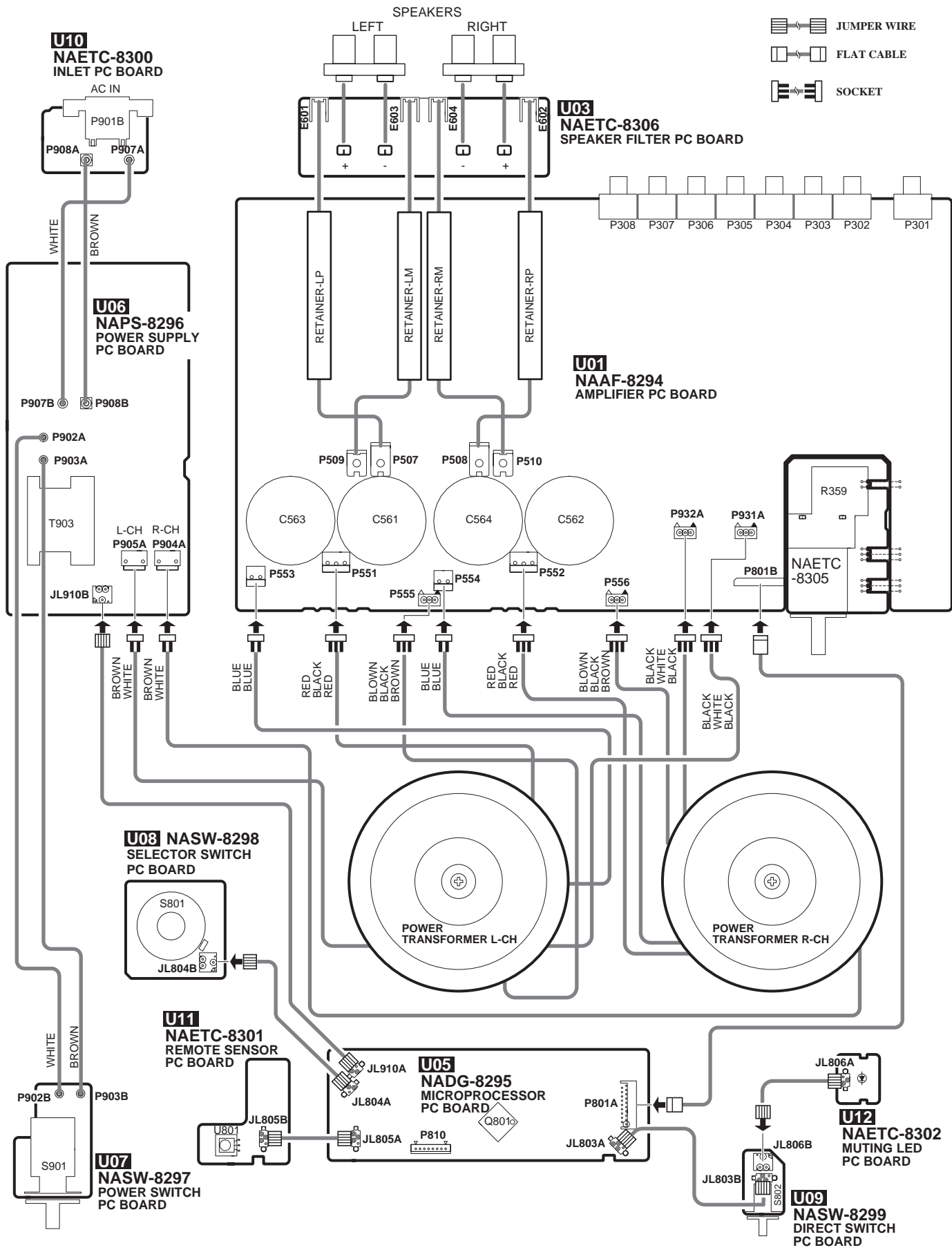
Soldering side



4

5

PC BOARD CONNECTION DIAGRAM



- JUMPER WIRE
- FLAT CABLE
- SOCKET

U10
NAETC-8300
INLET PC BOARD

U06
NAPS-8296
POWER SUPPLY
PC BOARD

U08 NASW-8298
SELECTOR SWITCH
PC BOARD

U11
NAETC-8301
REMOTE SENSOR
PC BOARD

U07
NASW-8297
POWER SWITCH
PC BOARD

U03
NAETC-8306
SPEAKER FILTER
PC BOARD

U01
NAAF-8294
AMPLIFIER PC BOARD

U05
NADG-8295
MICROPROCESSOR
PC BOARD

U12
NAETC-8302
MUTING LED
PC BOARD

U09
NASW-8299
DIRECT SWITCH
PC BOARD

SPEAKERS
LEFT RIGHT

P308 P307 P306 P305 P304 P303 P302 P301

RETAINER-LP
RETAINER-LM
RETAINER-RM
RETAINER-PP

C563 C561 C564 C562

NAETC-8305

POWER
TRANSFORMER L-CH

POWER
TRANSFORMER R-CH

AC IN
P901B
P908A P907A

WHITE
BROWN

P907B P908B

P902A
P903A
T903
L-CH R-CH
P905A P904A
JL910B

BROWN WHITE
BROWN WHITE

BLUE BLUE
RED BLACK RED

BROWN BLACK BROWN
BLUE BLUE

RED BLACK RED
BROWN BLACK BROWN

BLACK WHITE BLACK
BLACK WHITE BLACK

P902B P903B

S901

JL805B
JL805A

JL910A
JL804A

Q801
P810

P801A

JL803A

JL803B
S802

JL806A

JL806B

SCHEMATIC DIAGRAMS-1 AMPLIFIER SECTION

NAAF-8294
U01 AMPLIFIER PC BOARD

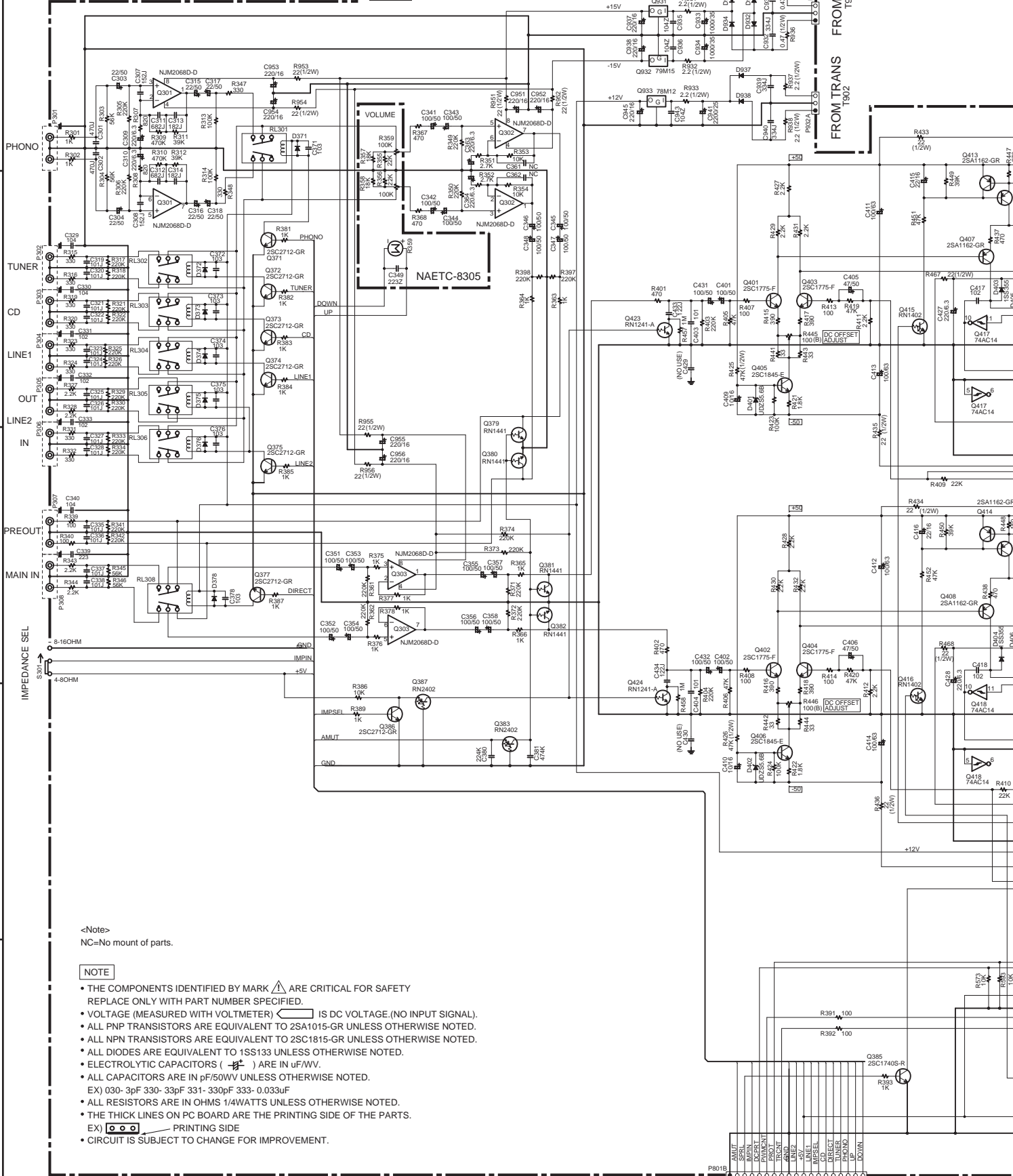
1

2

3

4

5



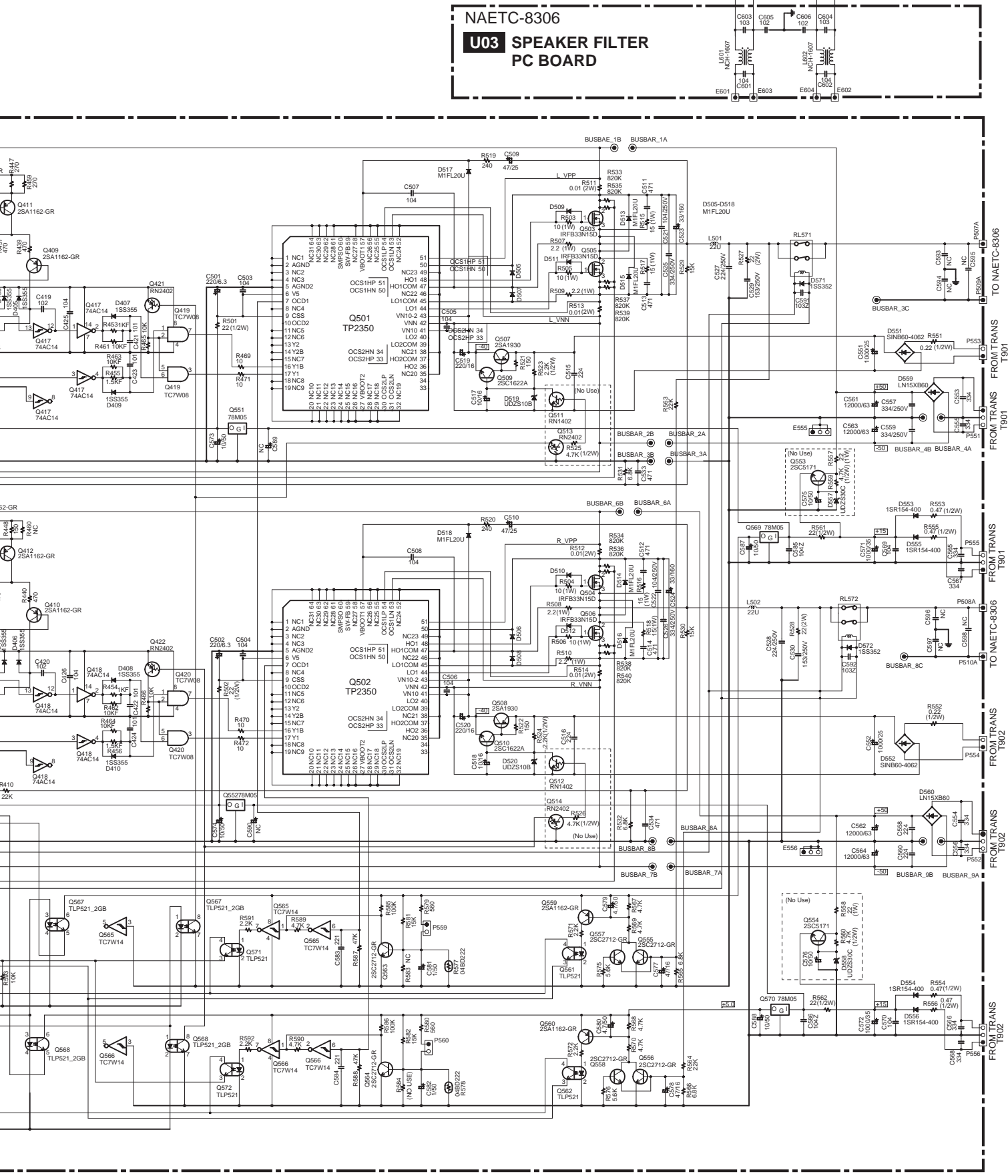
<Note>
NC=No mount of parts.

NOTE

- THE COMPONENTS IDENTIFIED BY MARK Δ ARE CRITICAL FOR SAFETY REPLACE ONLY WITH PART NUMBER SPECIFIED.
- VOLTAGE (MEASURED WITH VOLTMETER) \square IS DC VOLTAGE.(NO INPUT SIGNAL).
- ALL PNP TRANSISTORS ARE EQUIVALENT TO 2SA1015-GR UNLESS OTHERWISE NOTED.
- ALL NPN TRANSISTORS ARE EQUIVALENT TO 2SC1815-GR UNLESS OTHERWISE NOTED.
- ALL DIODES ARE EQUIVALENT TO 1SS133 UNLESS OTHERWISE NOTED.
- ELECTROLYTIC CAPACITORS (---) ARE IN $\mu\text{F/WV}$.
- ALL CAPACITORS ARE IN pF/50WV UNLESS OTHERWISE NOTED.
- EX) 030-3pF 330-33pF 331-330pF 333-0.033uF
- ALL RESISTORS ARE IN OHMS 1/4WATTS UNLESS OTHERWISE NOTED.
- THE THICK LINES ON PC BOARD ARE THE PRINTING SIDE OF THE PARTS.
- EX) \square PRINTING SIDE
- CIRCUIT IS SUBJECT TO CHANGE FOR IMPROVEMENT.

NAETC-8306
U03 SPEAKER FILTER
 PC BOARD

SPEAKERS



A

B

C

D

SCHEMATIC DIAGRAMS-2 MICROPROCESSOR & POWER SUPPLY SECTION

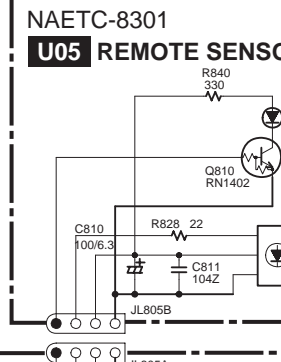
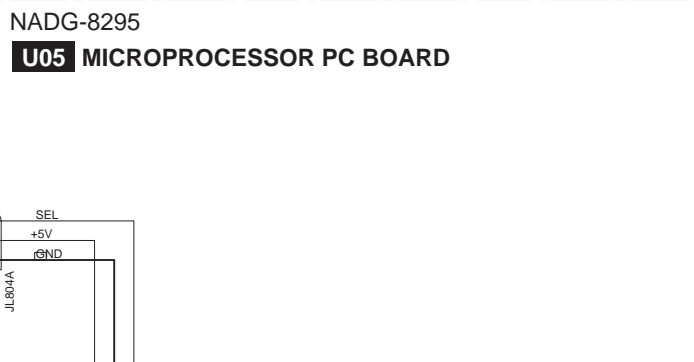
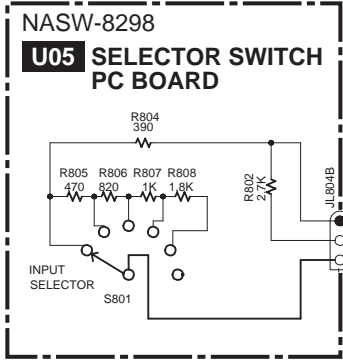
1

2

3

4

5



TO NAPS-8296

JL800A

JL800A

JL800A

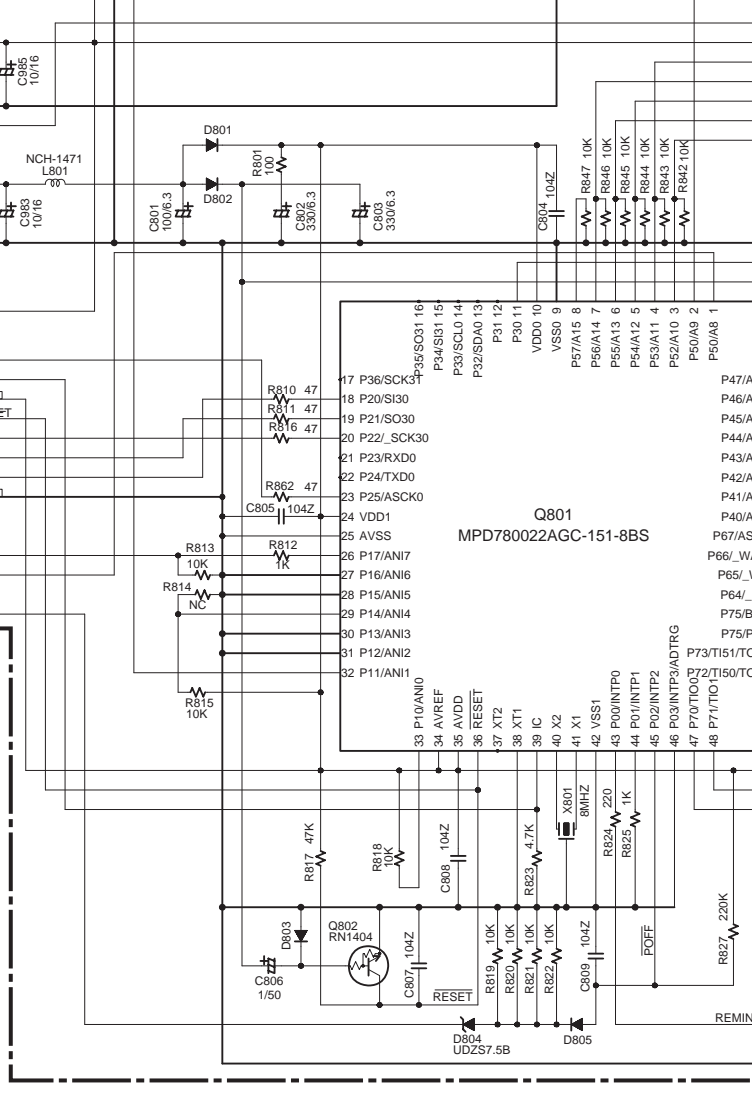
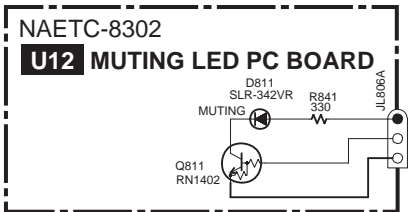
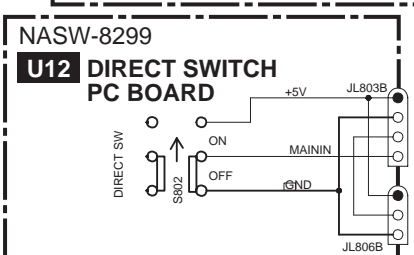
JL800A

JL800A

JL800A

JL800A

JL800A



P810 FLASH WRITER

HS

VPP

VDD

RESET

SCK

SI

SO

GND

GND

GND

GND

GND

GND

GND

GND

GND

GND

GND

GND

GND

GND

GND

GND

GND

GND

GND

GND

GND

GND

GND

GND

GND

GND

GND

GND

GND

GND

GND

GND

GND

GND

GND

GND

GND

GND

GND

GND

GND

GND

GND

GND

GND

GND

GND

GND

GND

GND

GND

GND

GND

GND

GND

GND

GND

GND

GND

GND

GND

GND

GND

GND

GND

GND

GND

GND

GND

GND

GND

GND

GND

GND

GND

GND

GND

GND

GND

GND

GND

GND

GND

GND

GND

GND

GND

GND

GND

GND

GND

GND

GND

GND

GND

GND

GND

GND

GND

GND

GND

GND

GND

GND

GND

GND

GND

GND

GND

GND

GND

GND

GND

GND

GND

GND

GND

GND

GND

GND

GND

GND

GND

GND

GND

GND

GND

GND

GND

GND

GND

GND

GND

GND

GND

GND

GND

GND

GND

GND

GND

GND

GND

GND

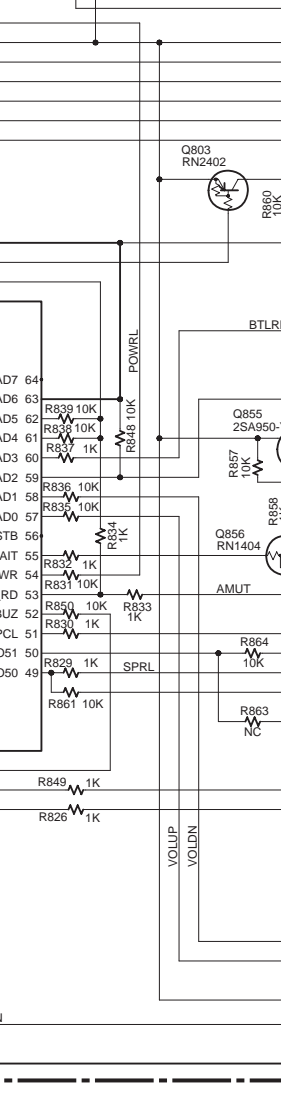
GND

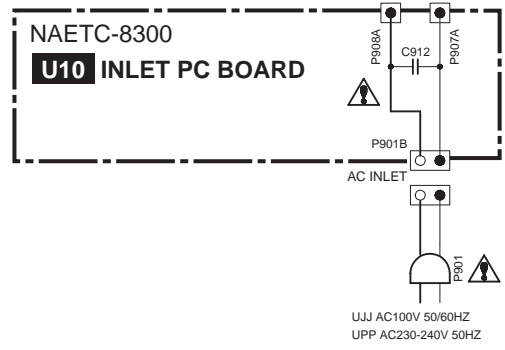
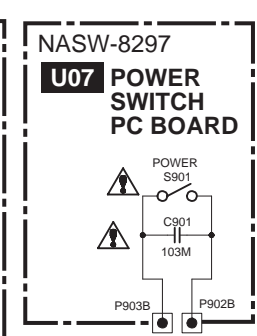
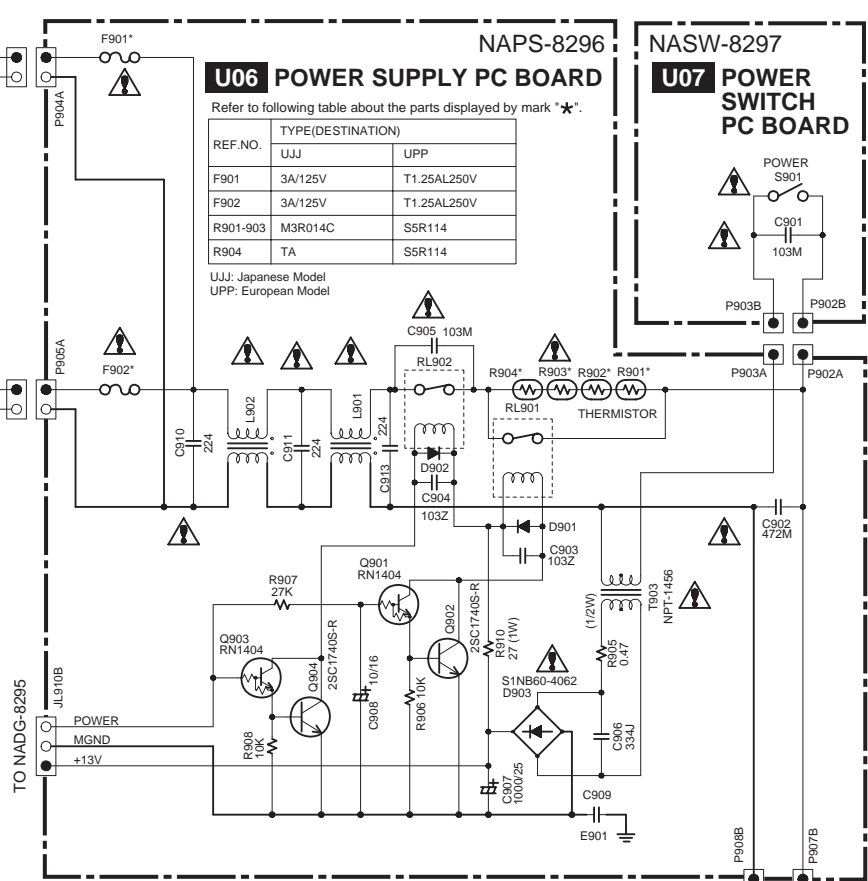
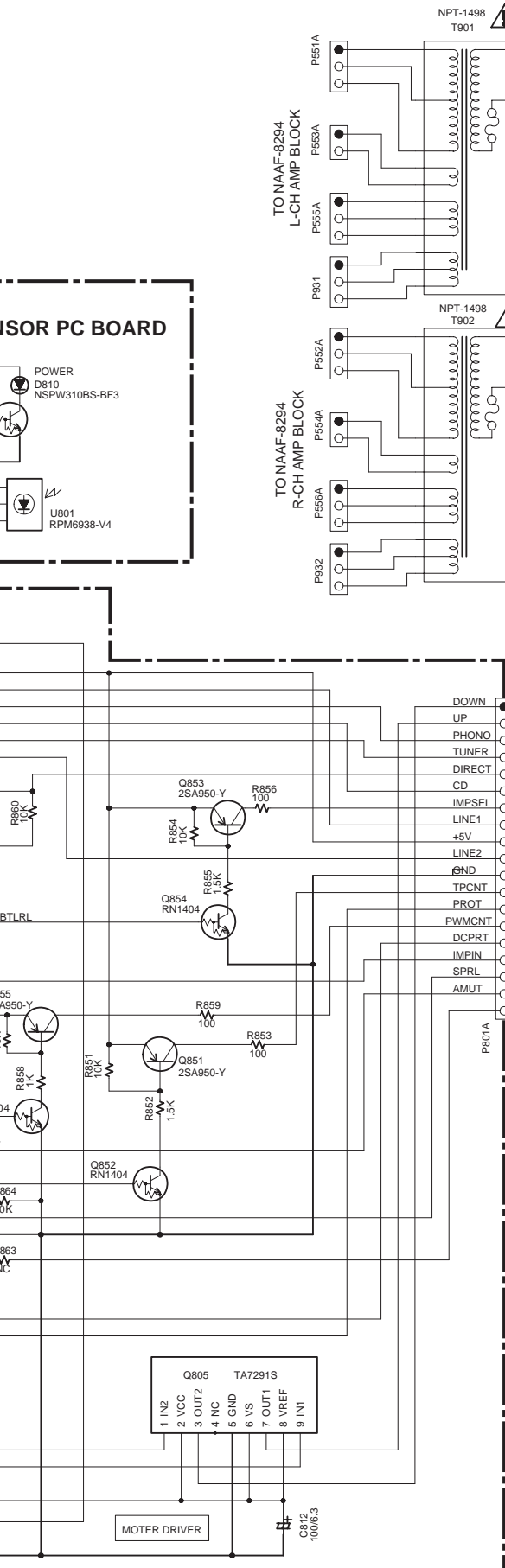
GND

GND

GND

GND





NOTE

- THE COMPONENTS IDENTIFIED BY MARK ARE CRITICAL FOR SAFETY. REPLACE ONLY WITH PART NUMBER SPECIFIED.
- VOLTAGE (MEASURED WITH VOLTMETER) IS DC VOLTAGE.(NO INPUT SIGNAL).
- ALL PNP TRANSISTORS ARE EQUIVALENT TO 2SA1015-GR UNLESS OTHERWISE NOTED.
- ALL NPN TRANSISTORS ARE EQUIVALENT TO 2SC1815-GR UNLESS OTHERWISE NOTED.
- ALL DIODES ARE EQUIVALENT TO 1SS133 UNLESS OTHERWISE NOTED.
- ELECTROLYTIC CAPACITORS () ARE IN uF/WV.
- ALL CAPACITORS ARE IN pF/50VWV UNLESS OTHERWISE NOTED.
EX) 030- 3pF 330- 33pF 331- 330pF 333- 0.033uF
- ALL RESISTORS ARE IN OHMS 1/4WATTS UNLESS OTHERWISE NOTED.
- THE THICK LINES ON PC BOARD ARE THE PRINTING SIDE OF THE PARTS.
EX) PRINTING SIDE
- CIRCUIT IS SUBJECT TO CHANGE FOR IMPROVEMENT.

CAUTION

FOR CONTINUED PROTECTION AGAINST FIRE HAZARD, REPLACE ONLY WITH FUSE OF SAME TYPE AND RATING INDICATED.

ATTENTION

AFIN D'ASSURER UNE PROTECTION PERMANENTE CONTRE LES RISQUES D'INCENDIE, REMPLACER UNIQUEMENT PAR UN FUSIBLE DE MEME TYPE ET CALIBRATION COMME INDIQUE.



THIS SYMBOL LOCATED NEAR THE FUSE INDICATES THAT THE FUSE USED IS SLOW OPERATING TYPE FOR CONTINUED PROTECTION AGAINST FIRE HAZARD,REPLACE WITH SAME TYPE FUSE. FOR FUSE RATING REFER TO THE MARKING ADJACENT TO THE SYMBOL.



CE SYMBOLE INDIQUE QUE LE FUSIBLE UTILISE EST E LENT.POUR UNE PROTECTION PERMANENTE,N'UTILISER QUE DES FUSIBLES DE MEME TYPE. CE DERNIER EST INDIQUE LA QU LE PRESENT SYMBOLE EST APPOSE.