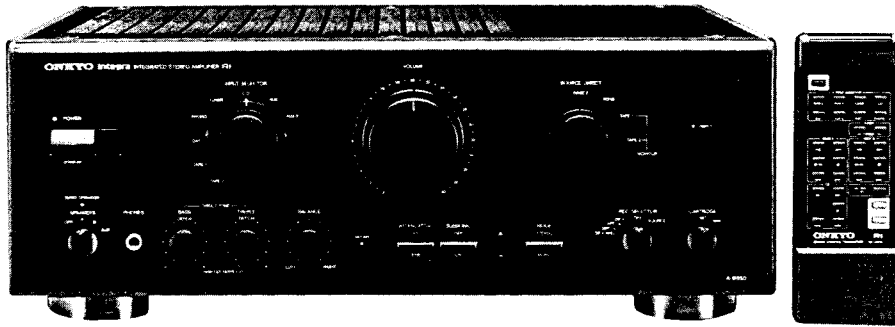


ONKYO® SERVICE MANUAL

Integrated Stereo Amplifier MODEL A-8850



Black and silver models

SAFETY-RELATED COMPONENT WARNING!!
COMPONENTS IDENTIFIED BY MARK Δ ON THE SCHEMATIC DIAGRAM AND IN THE PARTS LIST ARE CRITICAL FOR RISK OF FIRE AND ELECTRIC SHOCK. REPLACE THESE COMPONENTS WITH ONKYO PARTS WHOSE PARTS NUMBERS APPEAR AS SHOWN IN THIS MANUAL. MAKE LEAKAGE-CURRENT OR RESISTANCE MEASUREMENTS TO DETERMINE THAT EXPOSED PARTS ARE ACCEPTABLY INSULATED FROM THE SUPPLY CIRCUIT BEFORE RETURNING THE APPLIANCE TO THE CUSTOMER.

TABLE OF CONTENTS

Specifications	2
Precautions	2
Adjustment procedures	3
IC block diagram	4
Block diagram	7
Chassis exploded view	9
Printed circuit board parts list	12
Printed circuit board view	16
Schematic diagram	21
Packing part list	24
Front panel facilities	25
System connections	25

ONKYO
AUDIO COMPONENTS

SPECIFICATIONS

Power Output:	80 watts per channel, min. RMS, at 8 ohms, both channels driven from 20 Hz to 20 kHz, with no more than 0.008% Total harmonic distortion.	
Dynamic Power:	210 watts at 2 ohms, 167 watts at 4 ohms 115 watts at 8 ohms	
Total Harmonic Distortion	0.008% at rated power 0.008% at 1 watt output	
Intermodulation Distortion:	0.005% at rated power	
Damping Factor:	150 at 8 ohms (1 kHz)	
Input Sensitivity/Impedance:	Phono (MM):	2.5 mV/50 kohms
	Phono (MC):	160 μ V/130 ohms
	CD:	150 mV/30 kohms
	TUNER:	150 mV/30 kohms
	Tape Play:	150 mV/30 kohms
Output Level/Impedance:	Tape Rec:	150 mV/1.0 kohms (Phono)
Phono Overload:	Phono (MM):	180 mV RMS, at 1 kHz, 0.015% THD.
Tone Control (Vol -20 dB):	BASS:	± 8 dB at 100 Hz
	TREBLE:	± 8 dB at 10 kHz
High Cut:	6 kHz (6 dB/Octave) (TREBLE min.)	
Frequency Response:	CD, Tuner:	2 Hz -50 kHz (+0, -1 dB)
RIAA Deviation:	Phono (MM):	± 0.3 dB, 20 Hz -20 kHz
Subsonic Filter:	20Hz (-3dB, 6dB/Oct)	
Signal to Noise Ratio (IHF-A):	Phono (MM):	93 dB (5.0 mV input)
	Phono (MC):	74 dB (0.5 mV input)
	CD (DIRECT):	107 dB
Attenuator:	-20 dB	
Muting:	- ∞	
Power Supply:	European models:	AC230V, 50 Hz
Dimensions (W x H x D):	455 x 170 x 420 mm 17-15/16" x 6-11/16" x 16-9/16"	
Weight:	15.5 kg	

Specifications and features are subject to change without notice.

PRECAUTIONS

1. Replacing the fuses

For continued protection against risk fire, replace only with same type and same rating fuse.

CIRCUIT NO.	PART NO.	DESCRIPTION,
F901	252075	2.5A-SE-EAK, Primary fuse
F902	252076	3.15A-SE-EAK, Primary fuse

ADJUSTMENT PROCEDURES

Adjustments and Checking the Protection Circuitry

1. Preparations

- 1) Place the unit on the workbench. (There should be about 15 mm of space between the base plate of the unit and the work surface.)
- 2) Set up the unit as follows.
 - (1) No load
 - (2) No signal
 - (3) Volume turned all the way down
 - (4) Speaker switch OFF
 - (5) Power switch OFF

Note) Check the following points before making adjustments

- (1) The power switch should be OFF.
- (2) The interior of the unit should not be warm.

2. Idling current adjustment

- 1) Turn the power switch ON and allow the unit to warm up for about 10 minutes.
 - (1) Adjust R535 (R536) so that the voltage at test point VCT-IID on the NAAF-4209 circuit board is $15\text{mV} \pm 5\text{mV}$.
- Note) Semi-fixed resistors enclosed in parentheses () are for the right channel.

3. Check of operation of protection circuitry

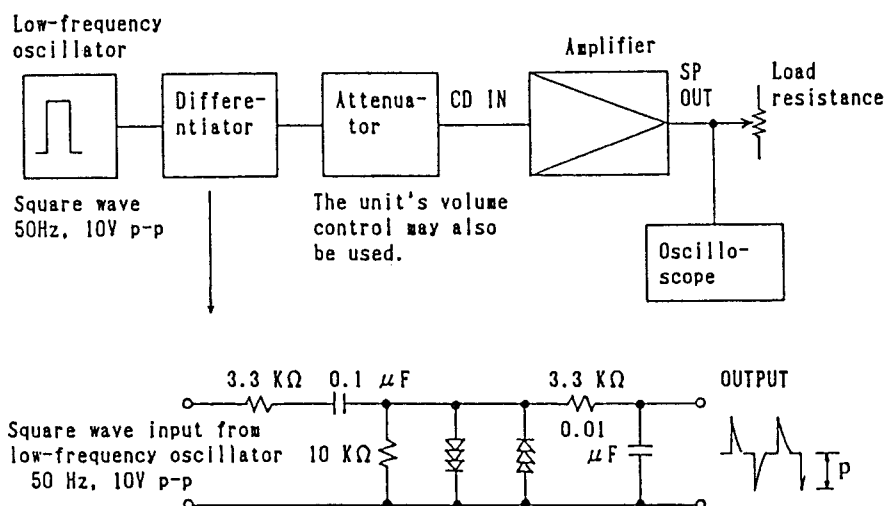
- 1) Check of operation of protection relay
 - (1) Confirm that the relay turns ON approximately 5 seconds after the power switch is turned ON.
 - (2) The SERVO indicator LED should light at the same time.
 - (3) The relay should turn OFF approximately 0.5 seconds after the power switch is turned OFF.
- 2) Check of DC detection and servo circuitry operation
 - (1) Turn the power on with no load.
 - (2) After the speaker relay turns ON, apply DC+200mV to the CD input terminals. Confirm that the relay turns OFF.
 - (3) Confirm that operation is the same as (2) above when an input of DC-200mV is applied.

Note) Under no circumstances connect a load or short the speaker terminals when performing the above test.

3) Signal input from the circuit illustrated below with no load.

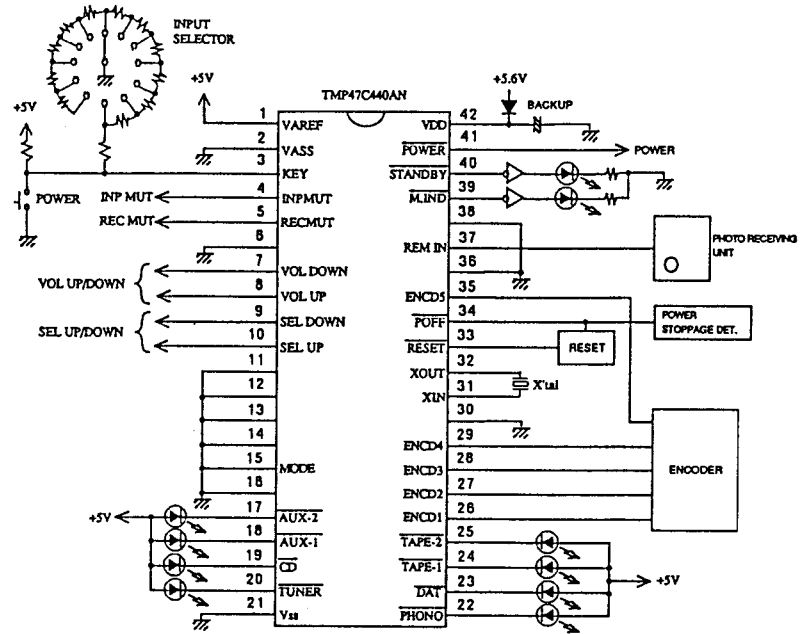
- (1) Confirm that the speaker relay does not turn OFF even when a 2 ohm load is connected when a peak value of 30Vp is output.
- (2) Next, confirm that when a 1 ohm load is connected the speaker relay switches OFF and ON a couple of times and then stays OFF.

Note) The period before that relay stays OFF should not last for more than 1 minute.
Relay OFF status can be canceled by switching the power OFF.



IC BLOCK DIAGRAM

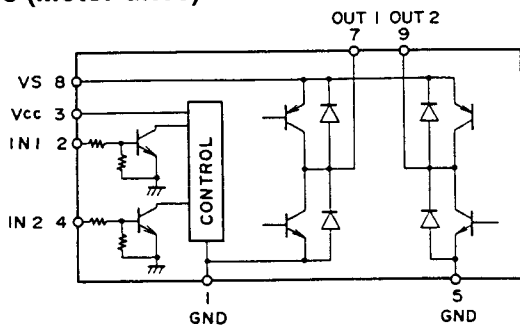
TMP47C440AN (Microprocessor)



Pin No.	Symbol	Description																								
1	VAREF	Analog reference voltage for A/D conversion																								
2	VASS	Analog reference GND for A/D conversion																								
3	KEY	Input Selector, Power key input terminal. To read Input Selector and Power key by means of A/D conversion																								
4	INPUT	Muting output terminal for Main amplifier input. Active "H"																								
5	RECMUT	Muting output terminal for Rec. output. Active "H" To be output when switching Input Selector. To be output continuously in case of Input Selector TAPE-1, TAPE-2, DAT, and DIGITAL-4.																								
6	PLAYER	Control output terminal for PLAYER. "L" will be output for 200ms if input K64 code for remote control and set Input Selector for PHONO.																								
7	VOL DOWN	UP/DOWN output terminal for volume. Active "H"																								
8	VOL UP	In case of UP (DOWN), VOL UP output will be "H" ("L"), while VOL DOWN output will be "L" ("H"). When not moving, both outputs shall be "H" (Brake).																								
9	SEL DOWN	UP/DOWN output terminal for Input Selector. Active "H" In case of UP (DOWN), SEL UP output will be "H" ("L"), While SEL DOWN output will be "L" ("H").																								
10	SEL UP	When not moving, both outputs shall be "H" (Brake).																								
11	S1	Output terminal for switching digital signal. Switch as follows through the position of Input Selector.																								
12	S2																									
13	S3																									
<table border="1"> <thead> <tr> <th>Input selector</th> <th>Output S3</th> <th>Output S2</th> <th>Output S1</th> </tr> </thead> <tbody> <tr> <td>DIGITAL-1</td> <td>L</td> <td>L</td> <td>L</td> </tr> <tr> <td>DIGITAL-2</td> <td>L</td> <td>L</td> <td>H</td> </tr> <tr> <td>DIGITAL-3</td> <td>L</td> <td>H</td> <td>L</td> </tr> <tr> <td>DIGITAL-4</td> <td>L</td> <td>H</td> <td>H</td> </tr> <tr> <td>Others (Analog)</td> <td>H</td> <td>H</td> <td>H</td> </tr> </tbody> </table>			Input selector	Output S3	Output S2	Output S1	DIGITAL-1	L	L	L	DIGITAL-2	L	L	H	DIGITAL-3	L	H	L	DIGITAL-4	L	H	H	Others (Analog)	H	H	H
Input selector	Output S3	Output S2	Output S1																							
DIGITAL-1	L	L	L																							
DIGITAL-2	L	L	H																							
DIGITAL-3	L	H	L																							
DIGITAL-4	L	H	H																							
Others (Analog)	H	H	H																							
14	EXP/JPN	Input terminal for remote control initialization when energizing.																								

Pin No.	Symbol	Description									
15	DIG-4/MODE	Output terminal for Input Selector display. Output of the position currently selected will be "L" (lighted). DIG-4/MODE output will be input terminal MODE for initialization of operation switch when energizing. Output DIG-1/AUX-1, DIG-2/AUX-2 will be switched by initializing MODE into;									
16	DIG-3										
17	DIG-2/AUX-2										
18	DIG-1/AUX-1										
19	CD										
20	TUNER	<table border="1"> <tr> <td>MODE</td> <td>DIG-1/AUX-1</td> <td>DIG-2/AUX-2</td> </tr> <tr> <td>L (0)</td> <td>AUX-1</td> <td>AUX-2</td> </tr> <tr> <td>H (1)</td> <td>DIG-1</td> <td>DIG-2</td> </tr> </table>	MODE	DIG-1/AUX-1	DIG-2/AUX-2	L (0)	AUX-1	AUX-2	H (1)	DIG-1	DIG-2
MODE	DIG-1/AUX-1	DIG-2/AUX-2									
L (0)	AUX-1	AUX-2									
H (1)	DIG-1	DIG-2									
21	VSS	GND terminal									
22	PHONO	Output terminal for Input Selector display. The output of the position currently selected will be "L (lighted).									
23	DAT										
24	TAPE-1										
25	TAPE-2										
26	ENCD1	Input terminal for detecting position of rotary sw of input Selector. To be connected with Encoder output for position detecting of Rotary sw.									
27	ENCD2										
28	ENCD3										
29	ENCD4										
30	TEST	To be connected with GND.									
31	XIN	Terminal for connecting with ceramic oscillator (4 MHz)									
32	XOUT										
33	RESET	Input terminal for reset signal. Active "L"									
34	POFF	Input terminal for detecting power suspension. Take a countermeasure as soon as possible against power failure when turned into "L". Set at HOLD mode.									
35	ENCD5	Input terminal for detecting Rotary sw position of Input Selector. To be connected with Encoder output for position detecting of Rotary sw.									
36	SYS OUT/SYS EN	Output terminal for System code. Active "L" to be turned into SYS EN for initialization input when energizing.									
37	REM IN	Input terminal for remote control signal. Active "L" To be connected with output of photoreceivin unit.									
38	SYS IN	Input terminal for System code. Active "H".									
39	M. IND	Output terminal for Muting display. Lighted in case of "L" To be set "L" when Muting of remote control is ON.									
40	STANBY	Output terminal for Standby display. Lighted in case of "L" To be turned into "L" when Power is OFF. Except the case of power suspension, the level inverted of Power output is always output.									
41	POWER	Output terminal for Power control. "L" When Power is ON									
42	VDD	Power (+5V) Connecting terminal.									

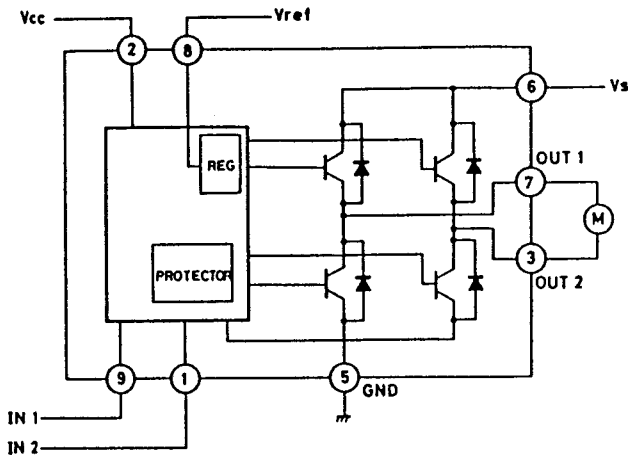
LB1638 (Motor drive)



Taugh Table

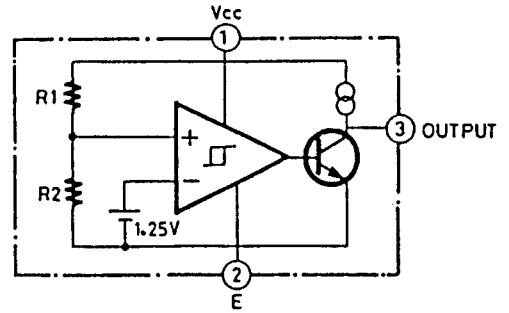
IN 1	IN 2	OUT 1	OUT 2	モード
H	L	H	L	NORMAL
L	H	L	H	REVERSE
H	H	L	L	BRAKE
L	L	OFF	OFF	WAIT

TA7291S (Motor drive)

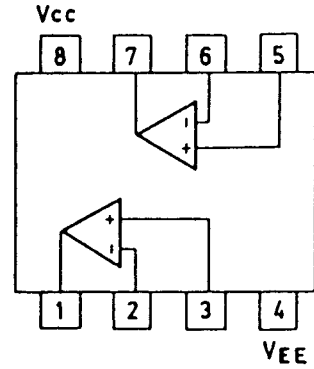


INPUT		OUTPUT		MODE
IN 1	IN 2	OUT 1	OUT 2	
0	0	∞	∞	STOP
1	0	H	L	CW/CCW
0	1	L	H	CCW/CW
1	1	L	L	BRAKE

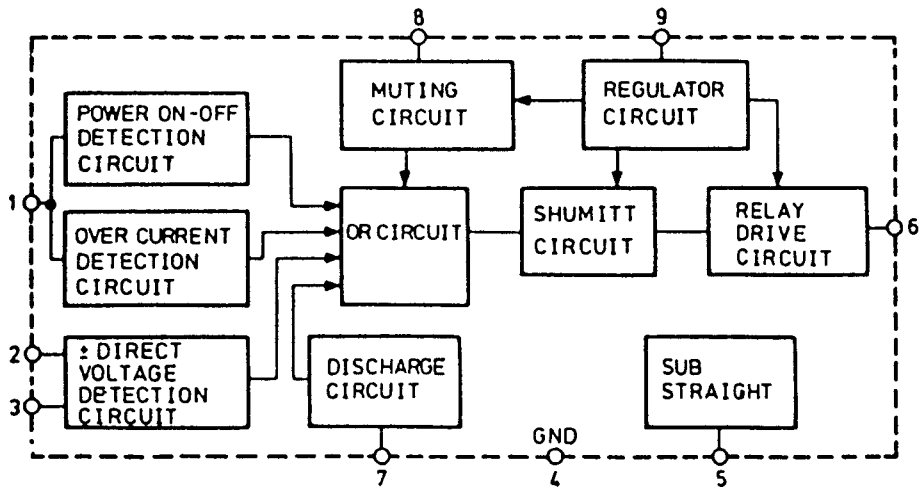
M51943BSL (System reset)



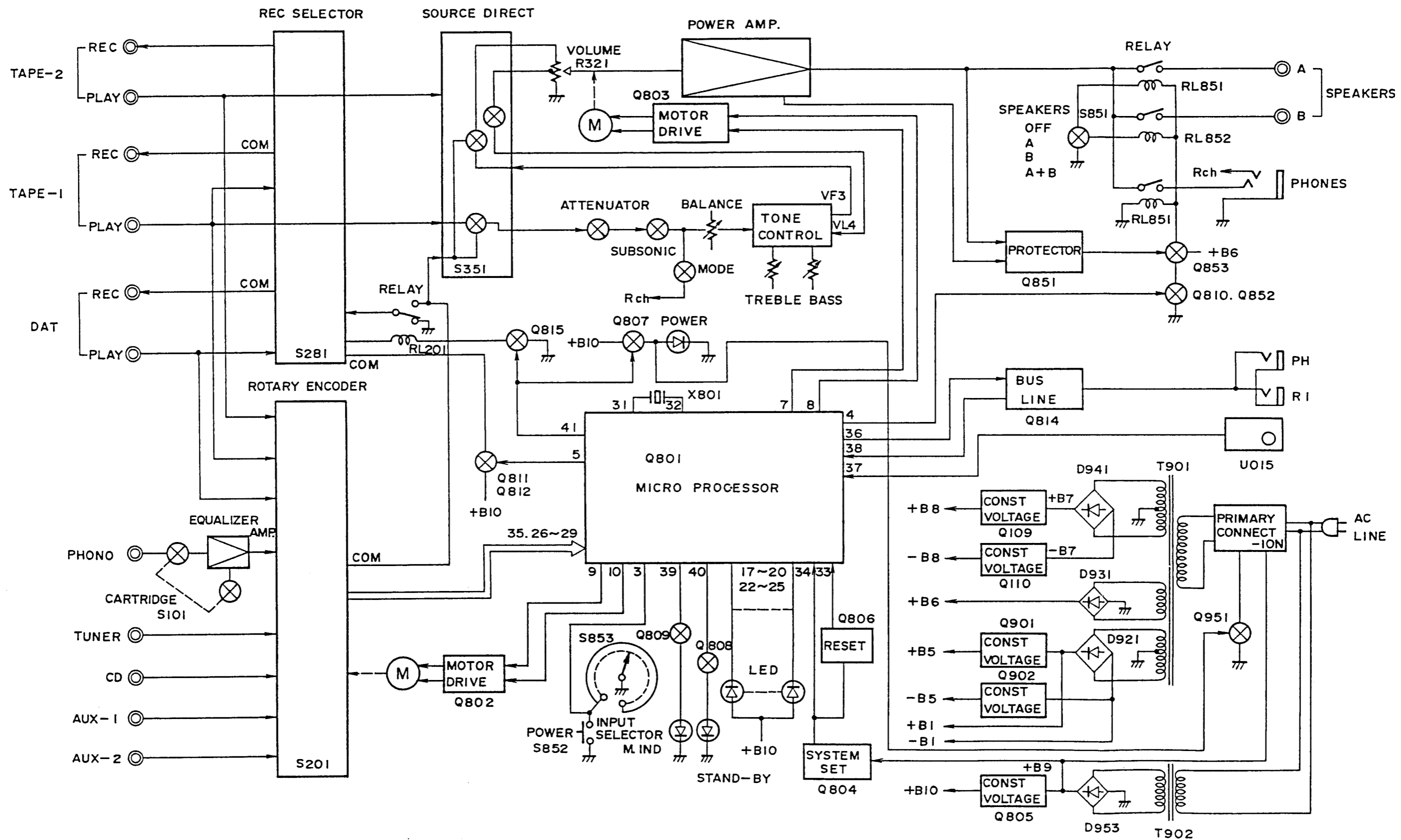
NJM5532DD (OP Amp)
NJM4560DX



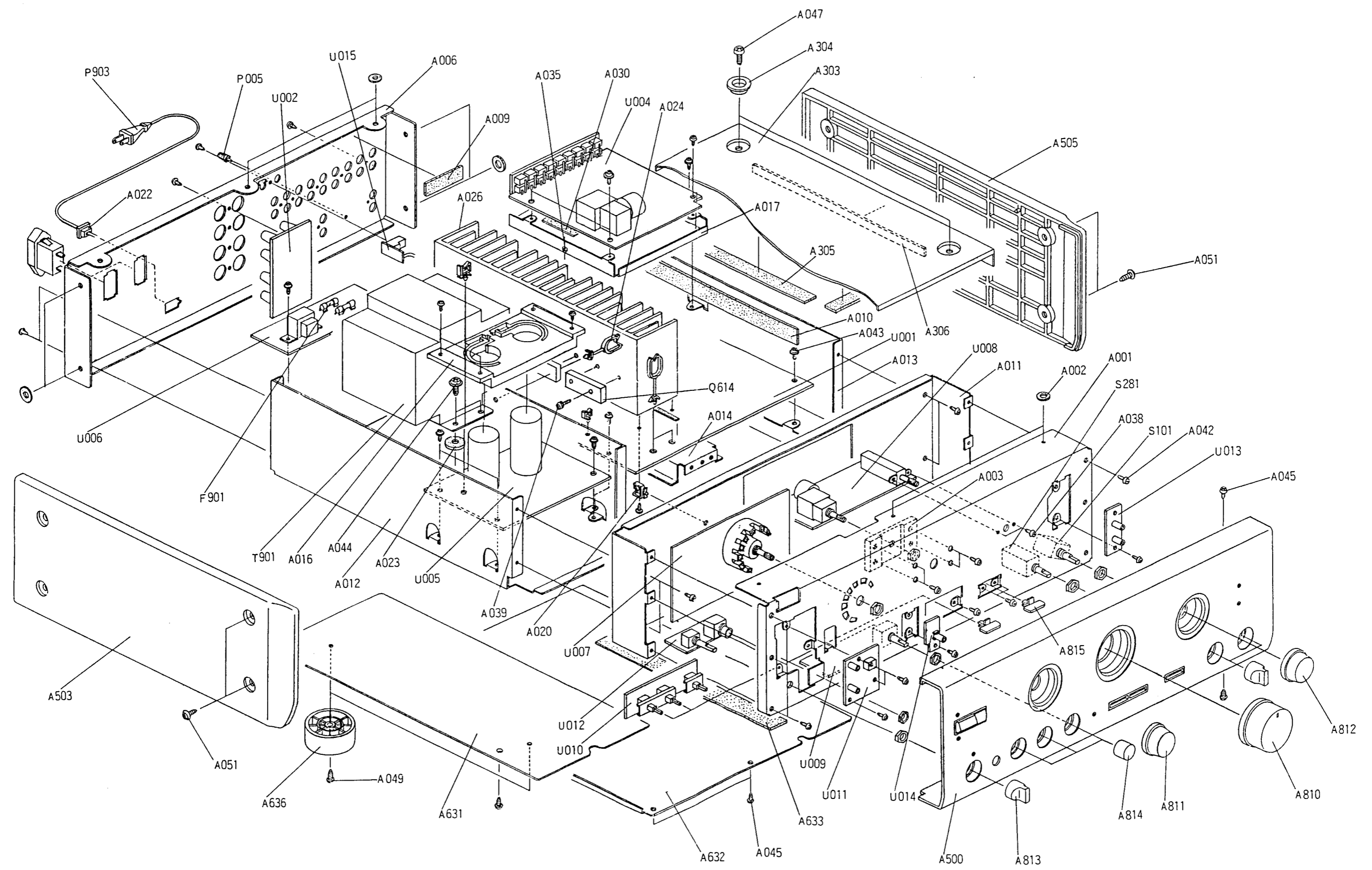
TA7317P (Protective circuit)



BLOCK DIAGRAM



CHASSIS-EXPLODED VIEW



CHASSIS EXPLODED VIEW PARTS LIST

REF. NO.	PART NO.	DESCRIPTION,	REF. NO.	PART NO.	DESCRIPTION,
A001	27110588-1C	FRONT BRACKET	A811	28324407	KNOB (SEL) [BLK]
A002	27270212	SPACER	A811	28324409	KNOB (SEL) [SIL]
A006	27121483A	BACK PANEL	A812	28324408	KNOB (D) [BLK]
A009	28140859	60 × 20 × 1.5T, CUSHION	A812	28324410	KNOB (D) [SIL]
A010	28140695	25 × 240 × 1.5T, CUSHION	A813	28324086	KNOB (SP) [BLK]
A011	27130622A	BRACKET (SHIELD)	A813	28324416	KNOB (SP) [SIL]
A012	27130623	BRACKET (L)	A814	28324411	KNOB (TONE) [BLK]
A013	27130624	BRACKET (R)	A814	28324412	KNOB (TONE) [SIL]
A014	27130656A	BRACKET (C)	A815	28324088A	KNOB (PUSH) [BLK]
A016	27190846	HOLDER (CAPACITOR)	A815	28324417	KNOB (PUSH) [SIL]
A017	27130627	BRACKET (EQ)	Q611, Q612	2201793 OR	2SA1493-O OR
A020	27300833	WS-2NS, CRAMP		2201796 OR	2SA1493-P OR
A022	27300750	#2271, BUSHING (AC CORD)		2201794	2SA1493-Y, TRANSISTOR
A023	27270213	SPACER (PT)	Q613, Q614	2201803 OR	2SC3857-O OR
A024	27301394	HL-18-0, CRAMP		2201806 OR	2SC3857-P OR
A026	27160284	RADIATION		2201804	2SC3857-Y, TRANSISTOR
A030	28140808	50 × 50 × 3T, CUSHION	△ T901	2300715	NPT-1118P, POWER
A035	800529	BUSHING (PC)			TRANSFORMER
A038	82143006	3P+6FN(BC), PAN-HEAD SCREW	S101	25030348	NRSF-102-20BU, SWITCH
A039	801433	3SMS8WSW+14B(BC), SPECIAL			OPERATION SECTION
		TAP-TIGHT SCREW	S281	25030349	NRSF-104-20BU, SWITCH
A042	834430088	3TTS+8B(BC), TAP-TIGHT SCREW			OPERATION SECTION
A043	831130088	3TTW+8B, TAP-TIGHT SCREW	P005	25060044	TERMINAL (GROUND)
A044	830440109	4TTC+10C(BC), TAP-TIGHT	△ P901, P902	25050337	NSCT-2P164, AC SOCKET
		SCREW	△ P903	253148 OR	AS-CEE OR
A045	801230	3STS+8BQ(BC), TAP-TIGHT		253150	AS-CEE, POWER SUPPLY CABLE
		SCREW			
A047	838440089	4TTB+8C(BC), TAP-TIGHT SCREW	△ (F901	252075	2.5A-SE-EAK, FUSE)
A049	831430088	3TTW+8B(BC), TAP-TIGHT SCREW	△ F902	252076	3.15A-SE-EAK, FUSE
A051	837440169	4TTT+16C(BC), TAP-TIGHT	U001	1A299509-2A	NAAF-4209-2A, MAIN CIRCUIT PC
		SCREW			BOARD ASS'Y
A303	28184464	TOP COVER	U002	1A299510-2A	NAETC-4210-2A, SPEAKER
A304	27265155A	COSMETIC RING (COVER)			TERMINAL PC BOARD ASS'Y
A305	28140695	25 × 240 × 1.5T, CUSHION	U004	1A299512-2A	NASW-4212-2A, INPUT CIRCUIT PC
A306	28140693	10 × 185 × 1.5T, CUSHION			BOARD ASS'Y
A500	1A299121	FRONT PANEL ASS'Y [BLK]	U005	1A297513-2	NAPS-4213-2, POWER SUPPLY
(A511)	27265219	COSMETIC RING (L) [BLK]			CIRCUIT (1) PCBOARD ASS'Y
(A512)	27265224A	COSMETIC RING ASS'Y (SEL)	U006	1A297514-2D	NAETC-4214-2D, POWER SUPPLY
		[BLK]			CIRCUIT (2) PC BOARD ASS'Y
(A516)	28198742	FACET	U007	1A297515-2A	NADG-4215-2A,
(A518)	27265223	COSMETIC RING (D) [BLK]			MICROPROCESSOR CIRCUIT
(A519)	27265220-3A	COSMETIC RING (R) [BLK]			PC BOARD ASS'Y
(A520)	28198742	FACET	U008	1A297517-1	NAAF-4217-1, VOLUME & DIRECT
(A523)	27265221-3	COSMETIC RING (VOL) [BLK]			SWITCHCIRCUIT PC BOARD
(A524)	28135199	NAME PLATE			ASS'Y
(A801)	28324082A	KNOB ASS'Y (POW) [BLK]	U009	1A297518-2	NAAF-4218-2, MUTING/SUBSONIC
(A805)	28191568	CLEAR PLATE (RE)			SWITCH PC BOARD ASS'Y
(A806)	28198753	FACET	U010	1A297519-2	NASW-4219-2, TONE CONTROL
(A807)	28198742	FACET			CIRCUIT PC BOARD ASS'Y
A808	28199190	FILM	U011	1A297520-2	NADIS-4220-2, PHOTO RECEIVING
A500	1A300121	FRONT PANEL ASS'Y [SIL]			CIRCUIT PC BOARD ASS'Y
(A511)	27265219-1	COSMETIC RING (L) [SIL]	U012	1A297521-2	NASW-4221-2, SPEAKER SWITCH
(A512)	27265224-3A	COSMETIC RING ASS'Y (SEL)			CIRCUIT PC BOARD ASS'Y
		[SIL]	U013	1A297522-2	NADIS-4222-2, LED PC BOARD
(A518)	27265223-3	COSMETIC RING (D) [SIL]			ASS'Y
(A519)	27265220-4	COSMETIC RING (R) [SIL]	U014	1A297523-2	NADIS-4223-2, LED PC BOARD
(A523)	27265221-4	COSMETIC RING (VOL) [SIL]			ASS'Y
(A801)	28324414	KNOB ASS'Y (POW) [SIL]	U015	1A297524-2A	NAETC-4224-2A, REMOTE
A503	28185359	SIDE BOARD (L)			CONTROL TERMINAL PC BOARD
A505	28185360	SIDE BOARD (R)			ASS'Y
A631	27170271	BOTTOM BOARD (L)	U016	1A299525-2A	NAETC-4225-2A, TUNER TERMINAL
A632	27170272A	BOTTOM BOARD (R)			PC BOARD ASS'Y
A633	28141024	20 × 240 × 2.5T, CUSHION			
A636	27175251	LEG ASS'Y			
A810	28324083A	KNOB (VOL) [BLK]			
A810	28324413A	KNOB (VOL) [SIL]			

NOTE: [BLK]: ONLY BLACK MODEL
[SIL]: ONLY SILVER MODEL

NOTE:
THE COMPONENTS IDENTIFIED BY MARK Δ ARE CRITICAL
FOR RISK OF FIRE AND ELECTRIC SHOCK. REPLACE ONLY
WITH PARTS NUMBER SPECIFIED.

PRINTED CIRCUIT BOARD PARTS LIST

MAIN CIRCUIT PC BOARD (NAAF-4209-2A)

CIRCUIT NO.	PART NO.	DESCRIPTION	CIRCUIT NO.	PART NO.	DESCRIPTION
	ICs			Coils	
Q105, Q106	222570	NJM4560D-X	L601, L602	231134	S-0.8E
Q109	222780183	78L18	L201-L203	230905	BL02RN1-R62
Q110	222790183	79L18			
Q519, Q520	222570	NJM4560D-X		Capacitors	
Q851	222584	TA7317P	C105, C106	372121214	120 pF, 50V, Styrene
	Transistors		C111, C112	379122024	2000 pF, 50V, Film (DEW)
Q101, Q102	2211535 OR	2SK146-GR OR	C113-C116	379122434	0.024 μ F, 50V, Film (DEW)
	2211536 OR	2SK146-BL OR	C117, C118	374724334	0.043 μ F, 50V, Film (TF)
	2211537	2SK146-V	C119-C122	391251017	100 μ F, 25V, Elect.(MUSE)
Q501, Q502	2212805 OR	2SK389-GR OR	C123, C124	374722024	2000 pF, 50V, Film (TF)
	2212806 OR	2SK389-BL OR	C147, C148	354764719	470 μ F, 35V, Elect.
	2212807	2SK389-V	C151, C152	354761019	100 μ F, 35V, Elect.
Q503-Q506	2211733 OR	2SC1845-E OR	C153, C154	354762219	220 μ F, 35V, Elect.
	2211732	2SC1845-F	C155, C156		
Q507, Q508	2213666 OR	2SA1240-F OR	C501, C502	372121014	100 pF, 50V, Styrene
	2213667	2SA1240-G	C509, C510	372121014	100 pF, 50V, Styrene
Q511, Q512	2211455 OR	2SA1015-GR OR	C511, C512	372123304	33 pF, 50V, Styrene
	2211454	2SA1015-Y	C513-C516	391252207	22 μ F, 25V, Elect.(MUSE)
Q513, Q514	2211354 OR	2SA949-Y OR	C523, C524	354742219	220 μ F, 16V, Elect.
	2211353	2SA949-O	C525-C526	374722235	0.022 μ F, 50V, Film (TF)
Q517, Q518	2211255 OR	2SC1815-GR OR	C527, C528	374794734	0.047 μ F, 63V, Film (TF)
	2211256	2SC1815-BL	C529, C530	354790479	4.7 μ F, 100V, Elect.
Q581-Q584	2211634 OR	2SC2229-Y OR	C605, C606	354741019	100 μ F, 16V, Elect.
Q601, Q602	2211633	2SC2229-O	C607, C608	374791044	0.1 μ F, 63V, Film (TF)
Q603, Q604	2211354 OR	2SA949-Y OR	C609, C610	374794734	0.047 μ F, 63V, Film (TF)
	2211353	2SA949-O	C619-C622	374791044	0.1 μ F, 63V, Film (TF)
Q605, Q606	2202034 OR	2SD1763A-D OR	C851	354722219	220 μ F, 6.3V, Elect.
	2202035	2SD1763A-E	C852	354742209	22 μ F, 16V, Elect.
Q607, Q608	2202024 OR	2SB1186A-D OR	C853	354784799	0.47 μ F, 50V, Elect.
	2202025	2SB1186A-E	C855	354743319	330 μ F, 16V, Elect.
Q617, Q618	2211634 OR	2SC2229-Y OR	C858, C859	374721044	0.1 μ F, 50V, Film (TF)
	2211633	2SC2229-O	C901-C903	354772219	220 μ F, 63V, Elect.
Q619, Q620	2211793 OR	2SA992-E OR	C905, C906	354782219	220 μ F, 50V, Elect.
	2211792	2SA992-F	C913, C914	354754719	470 μ F, 25V, Elect.
Q852	2212600	DTA124ES	C915, C916	354761019	100 μ F, 35V, Elect.
Q853	2211504	2SA950-Y	C921		
Q901	2211634 OR	2SC2229-Y OR		Resistors	
	2211633	2SC2229-O	R151, R152	442525604	56 Ω , 1/2W, Metal oxide film
Q902	2211354 OR	2SA949-Y OR	R527, R528	442524734	47 k Ω , 1/2W, Metal oxide film
	2211353	2SA949-O	R535, R536	5210062	N06HR4.7KBBD, Semi-fixed
Q903, Q904	2211945	2SK246-GR	R601, R602	442522224	2.2 k Ω , 1/2W, Metal oxide film
	Diodes		R603, R604	442522214	220 Ω , 1/2W, Metal oxide film
D505, D506	225251	TLR112, LED	R609-R612	442520224	2.2 Ω , 1/2W, Metal oxide film
D511-D516	223163	1SS133	R623-R626	4000078	0.33 Ω , 5W, Metal plate
D517-D520	225251	TLR112, LED	R633, R634	442820824	8.2 Ω , 3W, Metal oxide film
D851, D852	223163	1SS133	R862	442525114	510 Ω , 1/2W, Metal oxide film
D853	224450623	MTZ6.2C, Zener	R875, R876	441623914	390 Ω , 1W, Metal oxide film
D854	223163	1SS133	R901-R903	441621304	13 Ω , 1W, Metal oxide film
D901-D903	224450562	MTZ5.6B, Zener	R905, R906	442525614	560 Ω , 1/2W, Metal oxide film
D905, D906	225251	TLR112, LED			
D907, D908	224452204	MTZ22D, Zener			

CIRCUIT NO.	PART NO.	DESCRIPTION
	Switch	
S101	25065439	NSS-62159, Slide switch
	Relaies	
RL851, RL852	25065275	NRL-2P5A-DC12-38
	Plug	
P104	25055100	NPLG-3P84
P256	25055133	NPLG-3P117
P321	25055137	NPLG-7P121
P852	25055139	NPLG-9P123
	Terminal	
P101	25045341	NPJ-2PDBL-192
	Socket ass'y	
P103	2000551	NSAS-6P507
P752	2009990003	NSAS-06P0007
P753	2009990004	NSAS-06P0008
	Jumper sockets	
JL211	25050268	NSCT-4P96
JL212, JL213	25050267	NSCT-3P95
JL951		
	Bracket	
	27141059	(Ground)
	27301427	(Bus)
	Cushion	
	28140963	
	Holder clamp	
	27301186	MSA-1606
	27301271	MSA-1609

SPEAKER TERMINAL PC BOARD (NAETC-4210-2A)

CIRCUIT NO.	PART NO.	DESCRIPTION
	Terminals	
P751, P752	25060162	NTM-4PDMN088

INPUT CIRCUIT PC BOARD (NASW-4212-2A)

CIRCUIT NO.	PART NO.	DESCRIPTION
	Diode	
D201	223163	1SS133
	Capacitor	
C201	374721034	0.01 μ F, 50V, Film (TF)
	Switches	
S201	25030330	NRS-2211-BA, Rotary
S281	25065438	NSS-84158, Slide
	Relay	
RL201	25065397	NRL-2P1A-DC5-068
	Input terminals	
P201-P204	25045305	NPJ-4PDBL164
P207	25045304	NPJ-2PDBL163
	Plugs	
P205, P206	25055133	NPLG-3P117
P103A		
P211	25055139	NPLG-9P123
	Socket ass'y	
P256	2009990090	NSAS-6P0128
	Jumper socket	
JL201	25050267	NSCT-3P95

POWER SUPPLY CIRCUIT (1) PC BOARD (NAPS-4213-2)

CIRCUIT NO.	PART NO.	DESCRIPTION
	Diodes	
D921	22380038	RBV-602
D922, D923	22380003	1N5402
D931, D941	22380039	1D4B42
	Coils	
L921, L922	230905	BL02RN1-R62
	Capacitors	
C921, C922	3504247	12000 μ F, 53V, Elect.
C923-C925	374503345	0.33 μ F, 125V, Film (ME)
C931, C932	374722235	0.022 μ F, 50V, Film (TF)
C933	354741029	1000 μ F, 16V, Elect.
C941, C942	354764719	470 μ F, 35V, Elect.
C943, C944	374722235	0.022 μ F, 50V, Film (TF)
C945		
	Resistors	
R931	442520104	1 Ω , 1/2W, Metal oxide film
R932	441623314	330 Ω , 1W, Metal oxide film
R941, R942	442522294	0.22 Ω , 1/2W, Metal oxide film
	Jumper socket	
JL941	25050267	NSCT-3P95
	Socket ass'y	
P104	2009990069	NSAS-6P0106
	Plug	
P951a	25055133	NPLG-3P117
	Bracket	
	27301367	(Bus)
	Radiator	
D921a	27160265	RAD-82

POWER SUPPLY CIRCUIT (2) PC BOARD (NAETC-4214-2D)

CIRCUIT NO.	PART NO.	DESCRIPTION
	Transistor	
Q951	2213650	DTD113ZS
	Diodes	
D951	223163	1SS133
D952	22380039	1D4B42
	Transformer	
Δ T902	2300711	NPT-1117P
	Capacitors	
C951-C952	374721034	0.01 μ F, 50V, Film (TF)
C954, C955	374722235	0.022 μ F, 50V, Film (TF)
C956	354752229	2200 μ F, 25V, Elect.
Δ C971	3500065A	0.01 μ F, AC400V/125V, Film (IS)
Δ C972	3500065A	0.01 μ F, AC400V/125V, Film (IS)

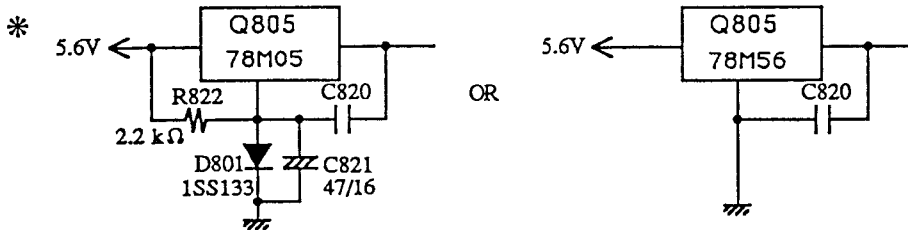
CIRCUIT NO	PART NO.	DESCRIPTION
Condensator cover		
△ C971a, C972a C973a	27301216	SB1925A
Resistors		
R951	442520104	1 Ω, 1/2W, Metal oxide film
R952	441628214	820 Ω, 1W, Metal oxide film
Relay		
△ RL901	25065248	NRL-1P15A-DC12-29
Terminals		
	25060092	NTM-1S33
Socket ass'y		
P951	2009990180	NSAS-6P0250
Fuse holder		
△ F901a, F902a	25050065	YSH403T
Fuse label		
△ F902b	29360374	T4A/250V

**MICROPROCESSOR CIRCUIT PC BOARD
(NADG-4215-2A)**

CIRCUIT NO	PART NO.	DESCRIPTION
ICs		
Q801	22240377	TMP47C440AN-1997
Q802	22240358	LB1638
Q803	22240239	TA7291S
Q804	222951	M51943BSL
Q805	222780055	78M05HF
* (Q805)	222780565	78M56
Transistors		
Q806	2213160	DTC124ES
Q807-Q809	2213510	DTA114ES

CIRCUIT NO.	PART NO.	DESCRIPTION
Q810	2211255	2SC1815-GR
Q811	2213090	DTA114YS
Q812	2213650	DTD113ZS
Q813	2211164	2SC2120-Y
Q814	2213090	DTA114YS
Q815	2211504	2SA950-Y
Diodes		
D801, D816	223163	1SS133
D803-D807		
D802	224450562	MTZ5.6B, Zener
D808-D815	225142DX2	SEL2913K-DX2, LED
D817	224450562	MTZ5.6B, Zener
Coils		
L801	233409K220	NCH-1284
L802-L805	230906	BL02RN2-R62
Osc. element		
X801	3010150	CST4.00M3W
Capacitors		
C803, C807	354744709	47 μF, 16V, Elect.
C808	375524744	0.47 μF, 50V, Film (MMT)
C810	3000051	0.047 F, 5.5V, Super
C816	374721044	0.1 μF, 50V, Film (TF)
C819	354724719	470 μF, 6.3V, Elect.
C821	354744709	47 μF, 16V, Elect.
C822	354761009	10 μF, 35V, Elect.
C824	354744709	47 μF, 16V, Elect.
C827	353741009	10 μF, 16V, Elect.
C829, C830	374721035	0.01 μF, 50V, Film (TF)
Resistors		
R817, R818	49163103405	RM1/10IJ10K × 5, Resistor network
R830	441620564	5.6 Ω, 1W, Metal oxide film
Socket ass'y		
P211	2009990110	NSAS-18P0167
P801	2000871	NSAS-6P827
Radiator		
Q805a	27160145	RAD-51
Switch		
S853	25030334	NRS-112-25RSM
Holder		
	27190786	(LED-8)

NOTE:



VOLUME & DIRECT SWITCH CIRCUIT PC BOARD (NAAF-4217-1)

CIRCUIT NO.	PART NO.	DESCRIPTION
	Resistor	
R321	5104293	N16RGM50KBT25, Variable
	Switch	
S351	25030336A	NRS-184-25SS, Rotary
	Socket ass'y	
P205	2000809	NSAS-6P765
P206	2000630	NSAS-6P586
P321	2009990181	NSAS-14P0251
	Plug	
P401A	25055133	NPLG-3P117

MUTING/SUBSONIC SWITCH PC BOARD (NAAF-4218-2)

CIRCUIT NO.	PART NO.	DESCRIPTION
	Capacitors	
C301~C304	374721635	0.016 μ F, 50V, Film (TF)
C305, C306	374721825	1800 pF, 50V, Film (TF)
C307, C308	374728234	0.082 μ F, 50V, Film (TF)
	Resistors	
R301	5148107A	N16RGMC250KMN25, Variable
R302	5142002	N16RGM11C100K25, Variable
R303	5144011	N16RGM11C70K88K25, Variable

TONE CONTROL CIRCUIT PC BOARD (NASW-4219-2)

CIRCUIT NO.	PART NO.	DESCRIPTION
	Capacitors	
C331, C332	354784799	0.47 μ F, 50V, Elect.
	Switches	
S331 (S332)	25035601	NPS-222-L565
S333	25035584	NPS-122-L546

PHOTO RECEIVING CIRCUIT PC BOARD (NADIS-4220-2)

CIRCUIT NO.	PART NO.	DESCRIPTION
	Photo receiving unit	
U015	24130003	GPIU50XS
	Diodes	
D831~D833	223163	1SS133
D834~D836	225142DX2	SEL2913K-DX2, LED
	Capacitor	
C831	354744709	47 μ F, 16V, Elect.
	Switch	
S852	25035548	NRS-111-S510
	Holder	
	27190787	(LED-1)

SPEAKER SWITCH CIRCUIT PC BOARD (NASW-4221-2)

CIRCUIT NO.	PART NO.	DESCRIPTION
	Diode	
D855	223163	1SS133
	Switch	
S851	25030335	NRSF-124-20BU, Rotary
	Stereo jack	
P851	25045337	HLJ4317-01-3120
	Relay	
RL853	25065174	NRL-2P1A-DC12-09
	Socket ass'y	
P852	2009990185	NSAS-18P0255
	Shield plate	
	27150208	

LED PC BOARD (NADIS-4222-2)

CIRCUIT NO.	PART NO.	DESCRIPTION
	Diodes	
D203	225142DX2	SEL2913K-DX2, LED
	Jumper socket	
JL210	25050267	NSCT-3P95
	Holder	
	27190787	(LED-1)

LED PC BOARD (NADIS-4223-2)

CIRCUIT NO.	PART NO.	DESCRIPTION
	Diode	
D821	225142DX2	SEL2913K-DX2
	Holder	
	27190787	(LED-1)

REMOTE CONTROL TERMINAL PC BOARD (NAETC-4224-2A)

CIRCUIT NO.	PART NO.	DESCRIPTION
	Mini jack	
P251	25045172	HSJ1003-01-020
	Plug	
P801a	25055133	NPLG-3P117

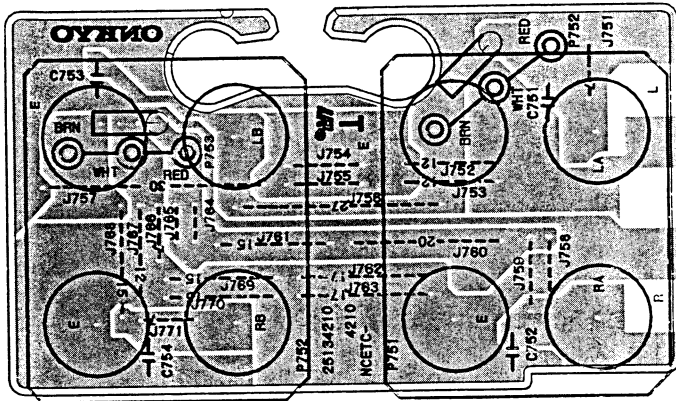
TUNER TERMINAL PC BOARD (NAETC-4225-2)

CIRCUIT NO.	PART NO.	DESCRIPTION
	Terminal	
P221	25045307	NPJ-2PDBL166

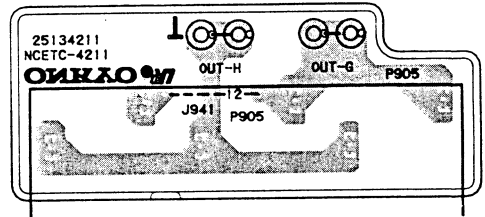
NOTE:
THE COMPONENTS IDENTIFIED BY MARK Δ ARE CRITICAL FOR RISK OF FIRE AND ELECTRIC SHOCK. REPLACE ONLY WITH PARTS NUMBER SPECIFIED.

PRINTED CIRCUIT BOARD VIEW FROM BOTTOM SIDE

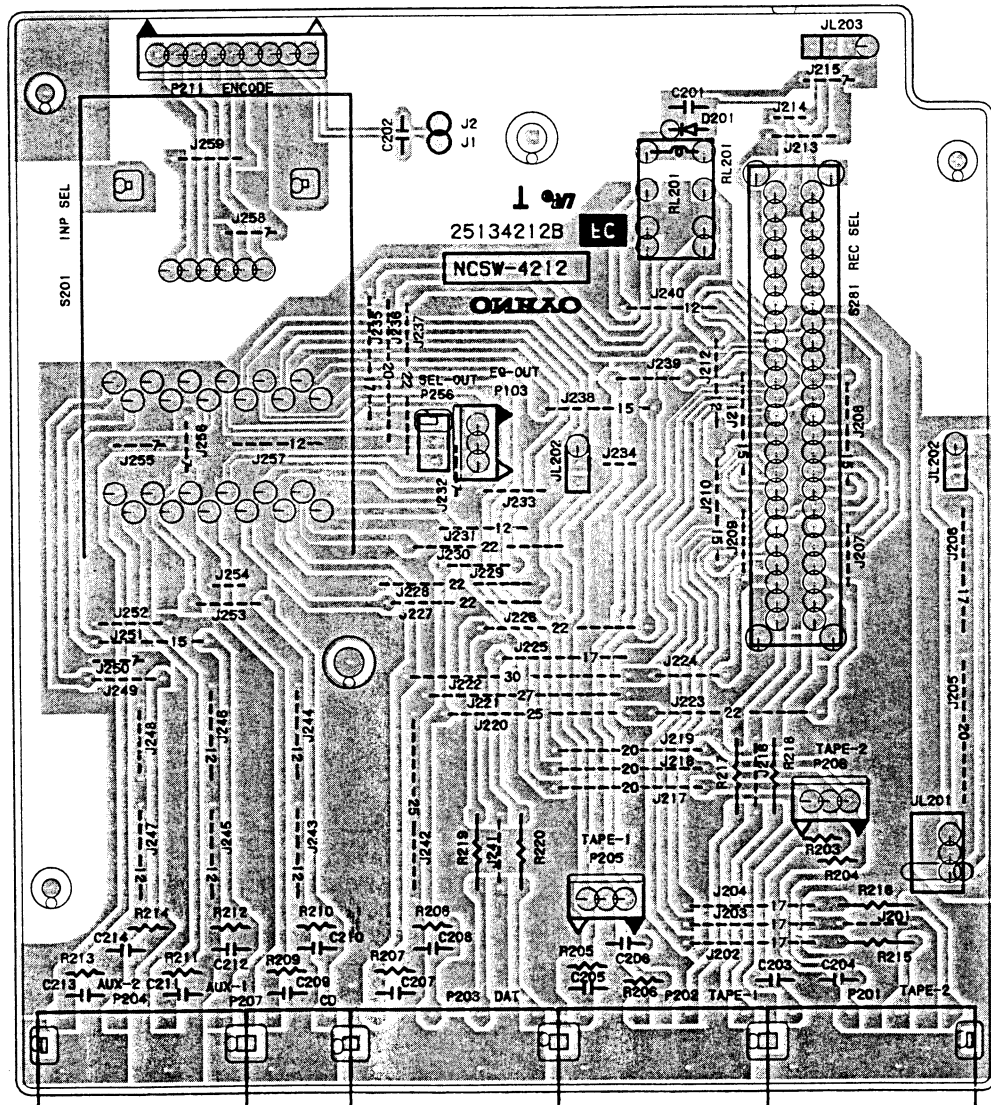
NAETC-4210

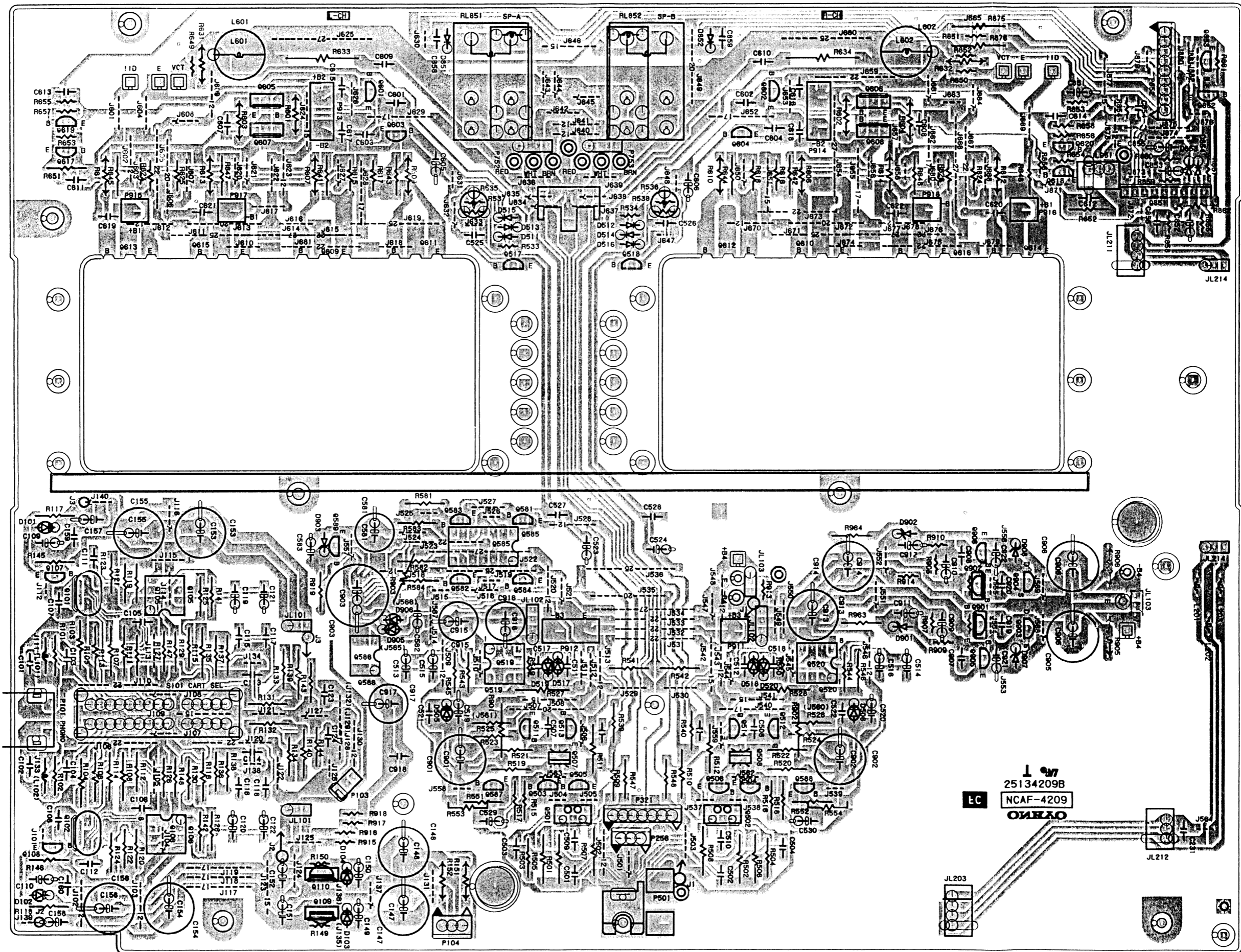


NAETC-4211

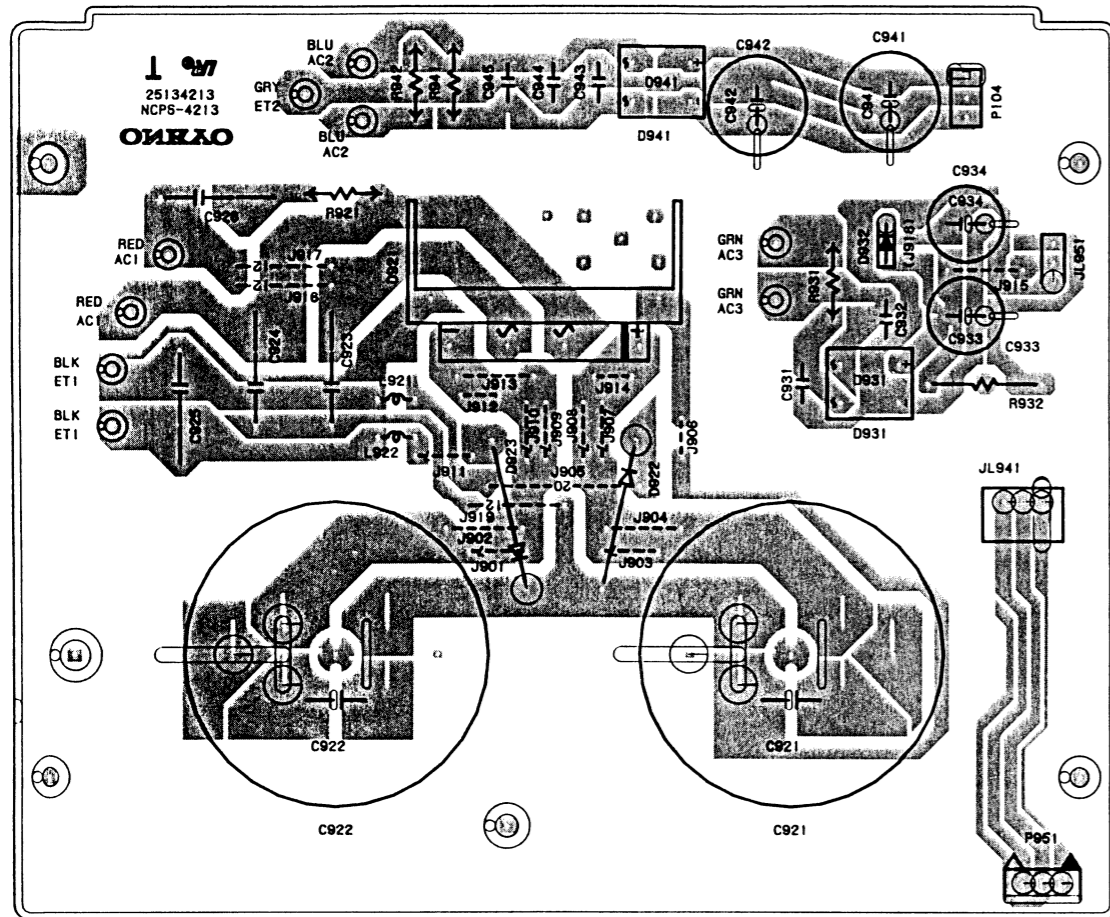


NASW-4212

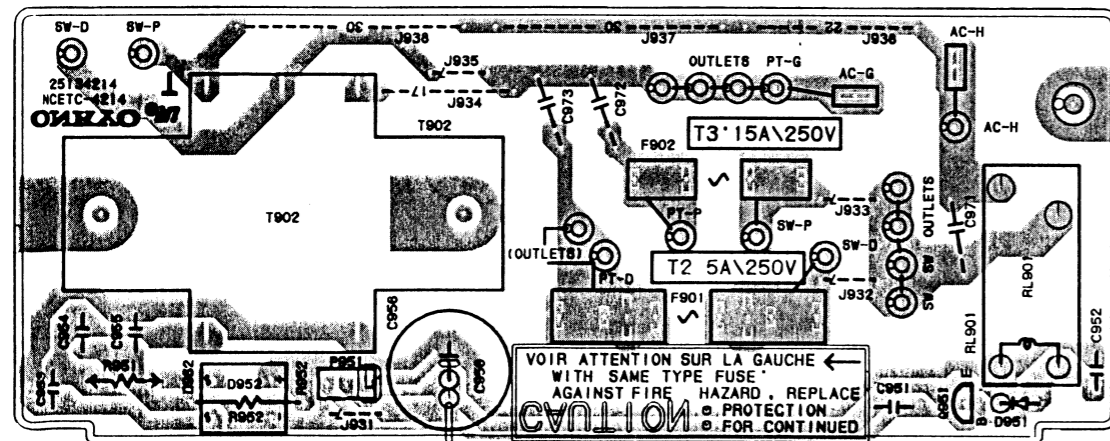




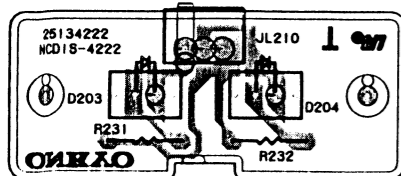
NAPS-4213



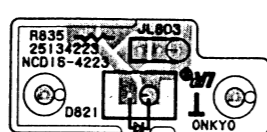
NAETC-4214



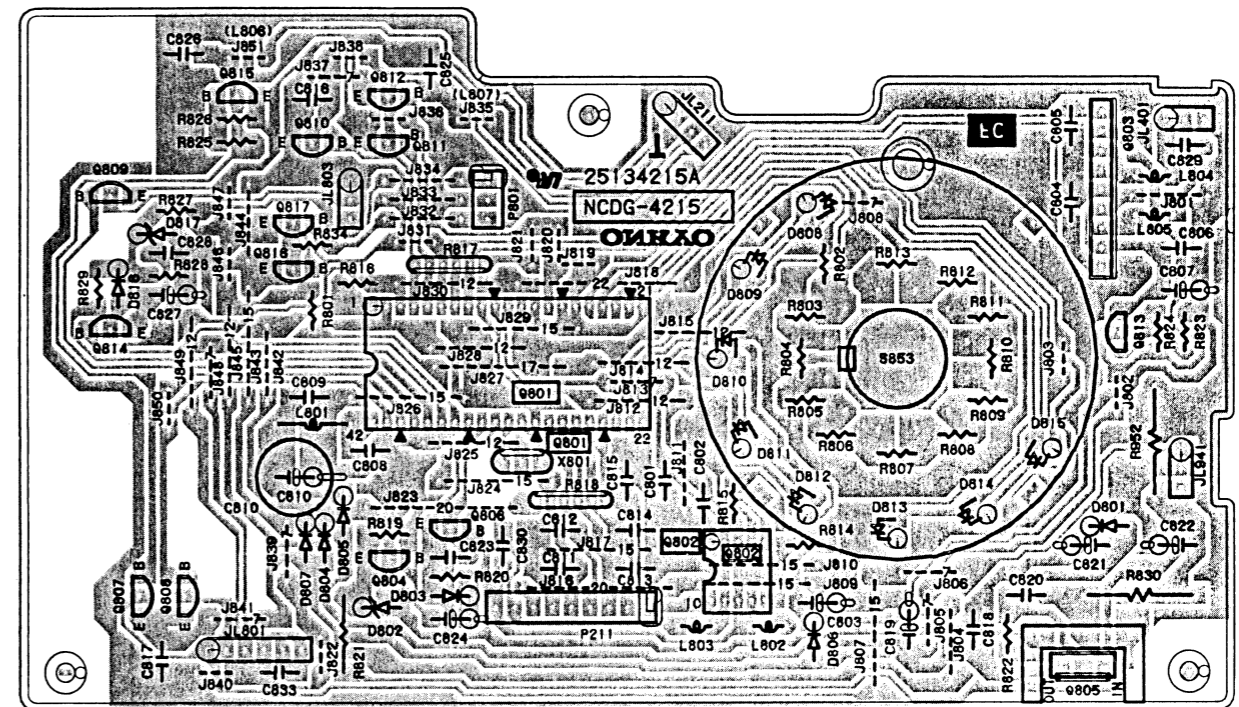
NADIS-4222



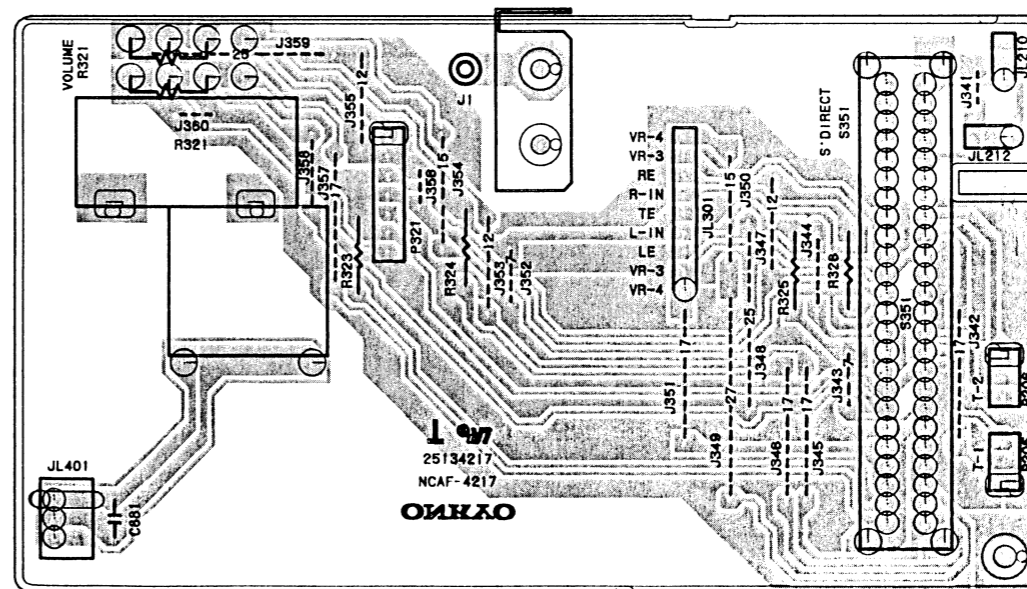
NADIS-4223



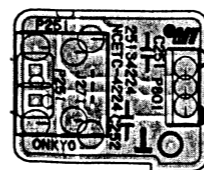
NADG-4215



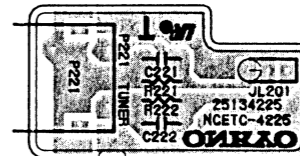
NAAF-4217



NAETC-4224



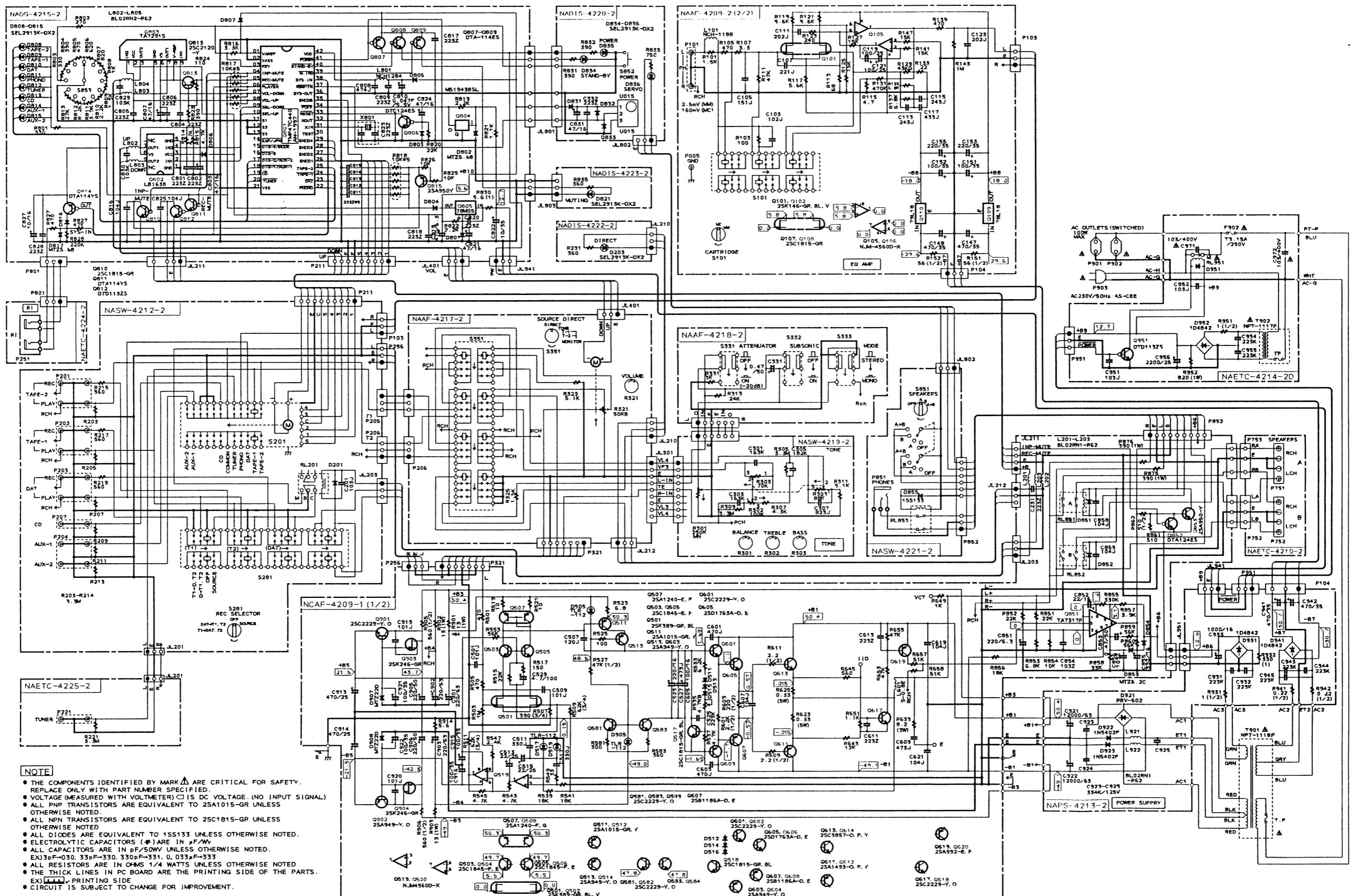
NAETC-4225



SCHEMATIC DIAGRAM

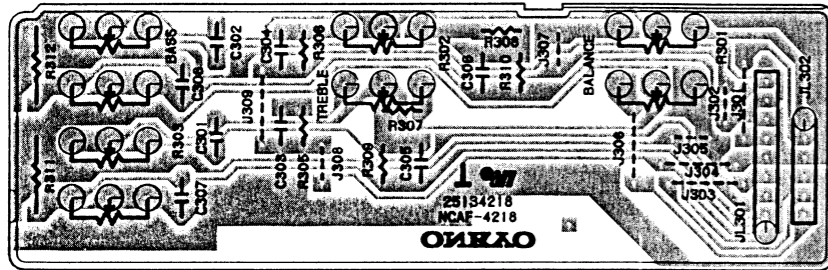
MODEL A-8850

1
2
3
4
5
6

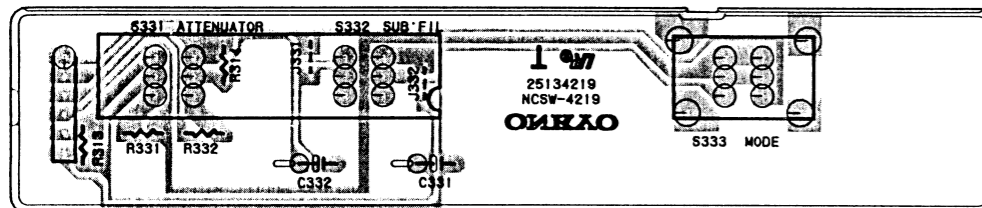


- NOTE**
- THE COMPONENTS IDENTIFIED BY MARK Δ ARE CRITICAL FOR SAFETY. REPLACE ONLY WITH PART NUMBER SPECIFIED.
 - VOLTAGE (MEASURED WITH VOLTMETER) □ IS DC VOLTAGE. (NO INPUT SIGNAL).
 - ALL PNP TRANSISTORS ARE EQUIVALENT TO 2SA1015-GR UNLESS OTHERWISE NOTED.
 - ALL NPN TRANSISTORS ARE EQUIVALENT TO 2SC1815-GR UNLESS OTHERWISE NOTED.
 - ALL DIODES ARE EQUIVALENT TO 1SS133 UNLESS OTHERWISE NOTED.
 - ELECTROLYTIC CAPACITORS (E) ARE IN μ F/V.
 - ALL CAPACITORS ARE IN pF/SOMV UNLESS OTHERWISE NOTED.
 - EX) 3pF-030, 33pF-330, 330pF-331, 0.033 μ F-333
 - ALL RESISTORS ARE IN OHMS 1/4 WATTS UNLESS OTHERWISE NOTED.
 - THE THICK LINES IN PC BOARD ARE THE PRINTING SIDE OF THE PARTS.
 - EX) PRINTING SIDE.
 - CIRCUIT IS SUBJECT TO CHANGE FOR IMPROVEMENT.

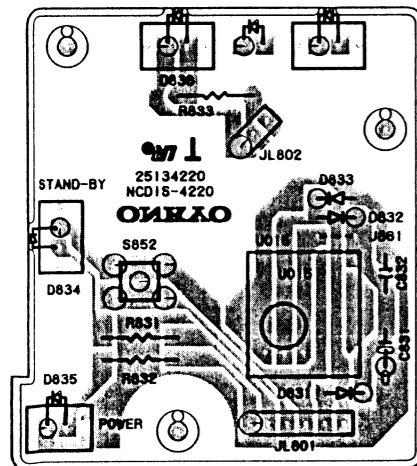
NAAF4218



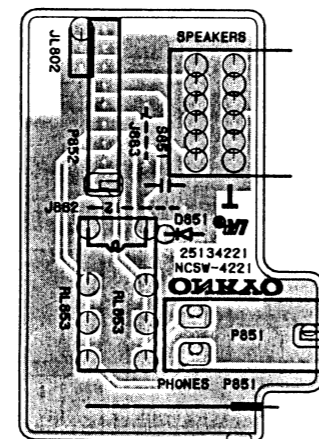
NASW-4219



NADIS-4220



NASW-4221

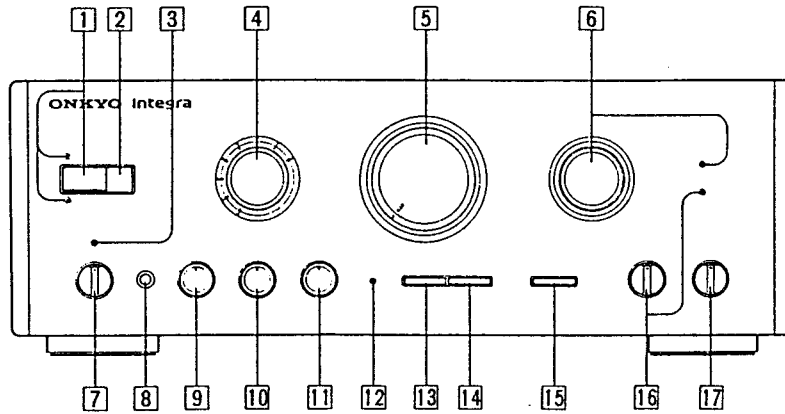


PARTS LIST OF PACKING

REF. NO.	PART NO.	DESCRIPTION
A851	29052263	MASTER CARTON BOX [BLK]
A851	29052265	MASTER CARTON BOX [SIL]
A852	29091425A	PAD, LEFT
A853	29091426A	PAD, RIGHT
A854	261504	PAPER TAPE
A855	29100035A	1020 x 720, POLY-VINYL BAG
A857	282320	SEALING HOOK
A858	29110071	DAMPLON TAPE (W=50)
	29355133A	DBP CAUTION LABEL
ACCESSORY BAG		
A901	29341650	INSTRUCTION MANUAL
	29365020C	WARRANTYCARD
	29100094A	POLY-VINYL BAG
A903	24140207	RC-207S, REMOTE CONTROL TRANSMITTER
A904	3010054	UM-3, BATTERY
A905	2010200	3.5 mm, MINI PLUG ASS'Y
A906	29100097	350 x 250, POLY-VINYL BAG

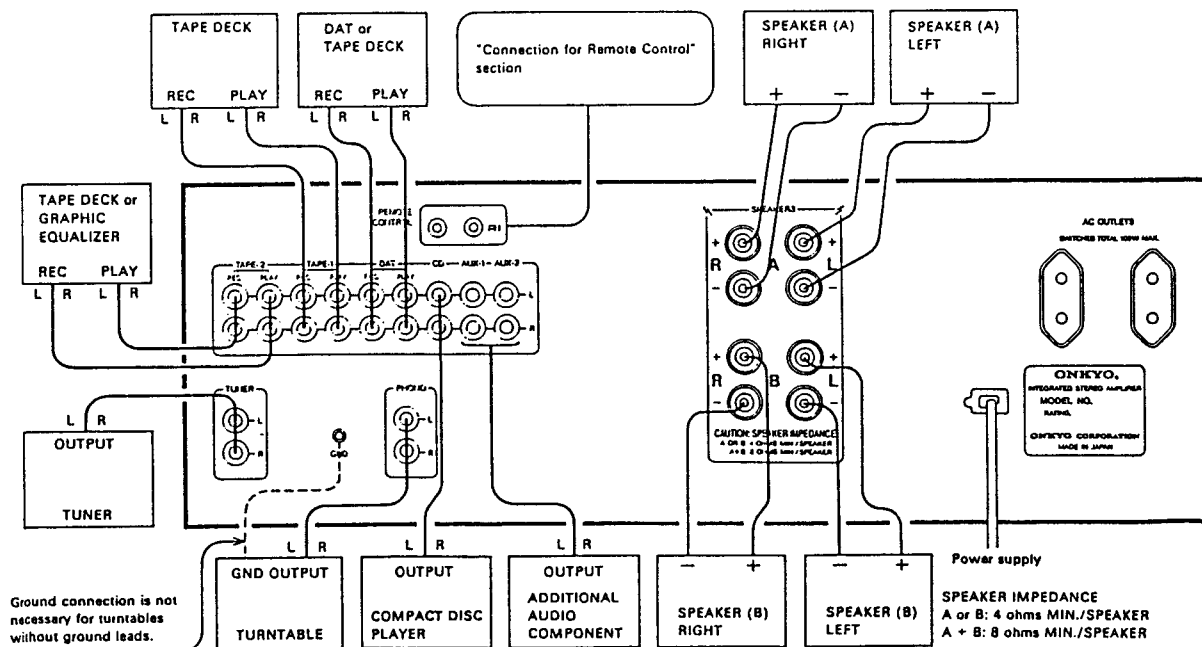
NOTE [BLK]: ONLY BLACK MODEL
[SIL]: ONLY SILVER MODEL

FRONT PANEL FACILITIES



- | | |
|--|---|
| <ol style="list-style-type: none"> 1. Power switch (POWER) 2. Remote control sensor 3. Servo operation indicator (SERVO OPERATION) 4. Input selector switch (INPUT SELECTOR)
TAPE-2, TAPE-1, DAT, PHONO, CD, AUX-1, AUX-2 5. Volume control (VOLUME) 6. Source direct switch (SOURCE DIRECT)
DIRECT, TONE, MONITOR TAPE-1/TAPE-2 7. Speaker selector switch (SPEAKERS)
OFF, A, B, A+B 8. Headphone jack (PHONES) 9. Bass control (BASS) | <ol style="list-style-type: none"> 10. Treble control (TREBLE) 11. Balance control (BALANCE) 12. Muting indicator 13. Attenuator switch (ATTENUATOR) 14. Subsonic filter switch (SUBSONIC) 15. Mode selector switch (MODE)
STEREO, MONO 16. Recording source selector switch (REC SELECTOR)
TAPE-1 → DAT & TAPE-2, DAT → TAPE-1 & 2
OFF
SOURCE 17. Cartridge selector switch (CARTRIDGE)
MC, MM |
|--|---|

SYSTEM CONNECTIONS



A-8850

ONKYO CORPORATION

International Division: Onarimon Yusen Bldg., 23-5, Nishi-Shimbashi 3-chome, Minato-ku,
TOKYO 105, JAPAN Tel: 03-3432-6987 Fax: 03-3436-6979

ONKYO DEUTSCHLAND GMBH ELECTRONICS
Industriestrasse 20, 8034 Germering, GERMANY
Tel: 089 84 93 20 Fax: 089 84 93 226