

ONKYO SERVICE MANUAL

CD TUNER AUDIO SYSTEM MODEL CBX-300



MDC	120V AC, 60Hz
MPP	230V AC, 50Hz

SAFETY-RELATED COMPONENT WARNING!!

COMPONENTS IDENTIFIED BY MARK \triangle ON THE SCHEMATIC DIAGRAM AND IN THE PARTS LIST ARE CRITICAL FOR RISK OF FIRE AND ELECTRIC SHOCK. REPLACE THESE COMPONENTS WITH ONKYO PARTS WHOSE PART NUMBERS APPEAR AS SHOWN IN THIS MANUAL.

MAKE LEAKAGE-CURRENT OR RESISTANCE MEASUREMENTS TO DETERMINE THAT EXPOSED PARTS ARE ACCEPTABLY INSULATED FROM THE SUPPLY CIRCUIT BEFORE RETURNING THE APPLIANCE TO THE CUSTOMER.

A

B

C

D

EXPLODED VIEW

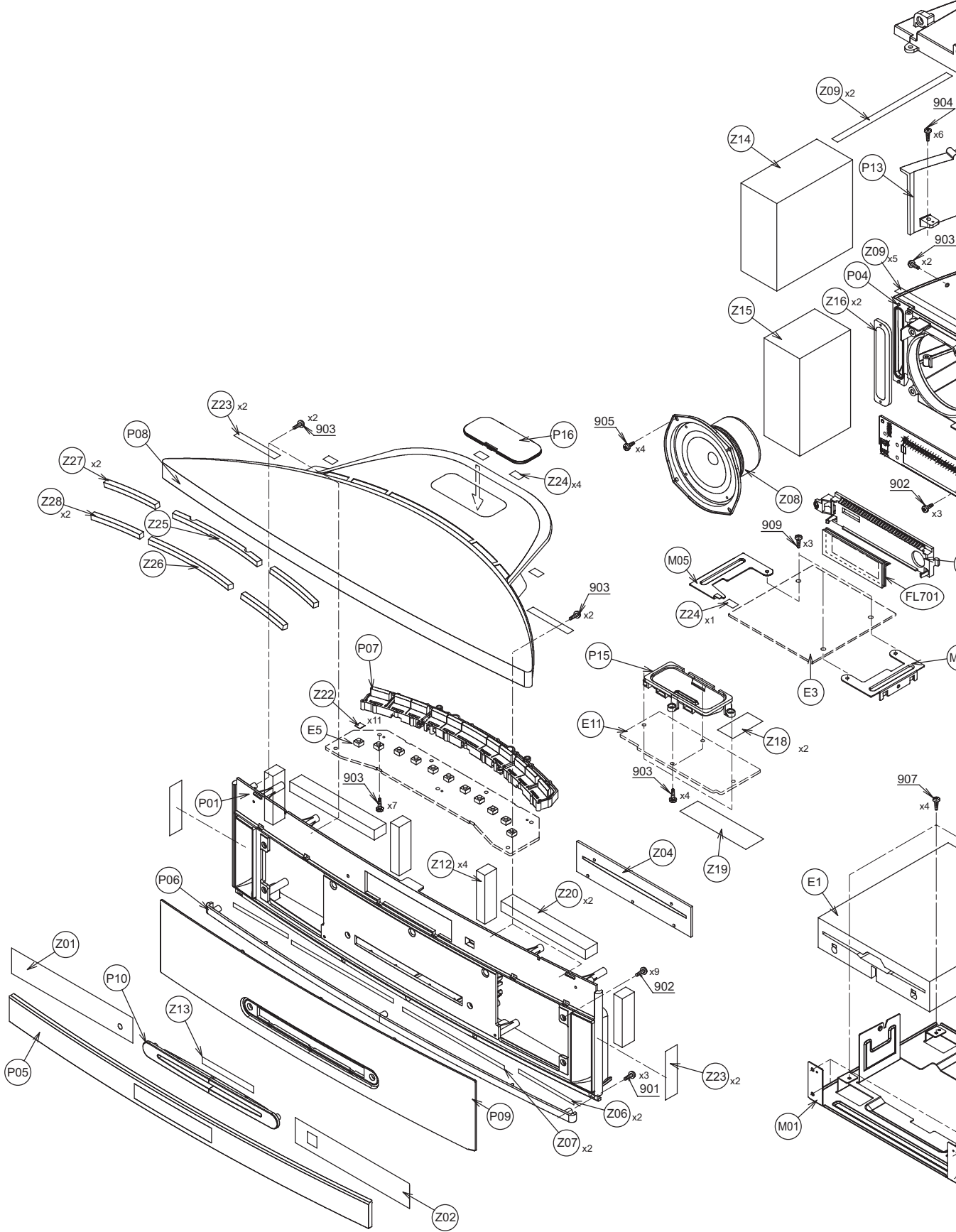
1

2

3

4

5

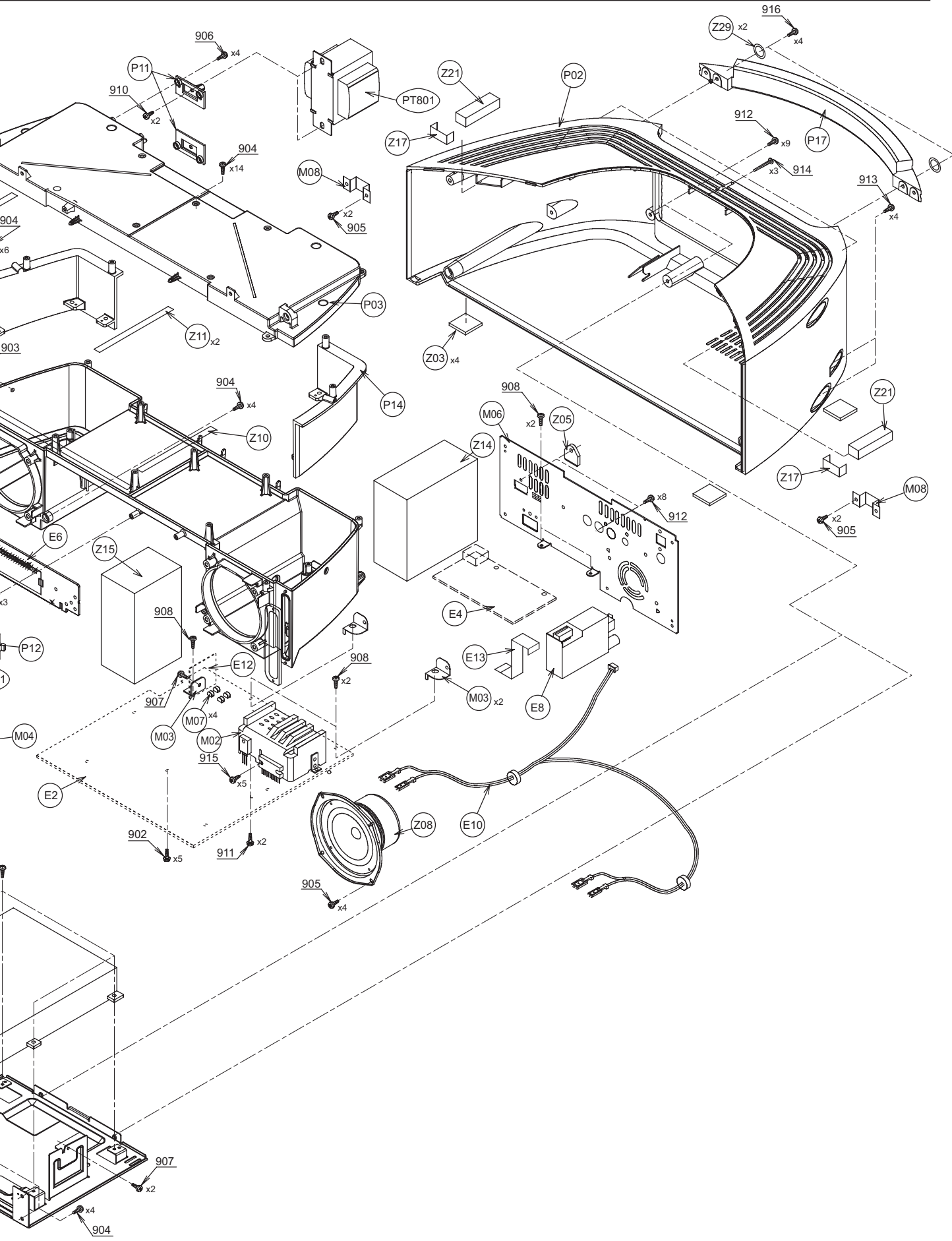


E

F

G

H



A

B

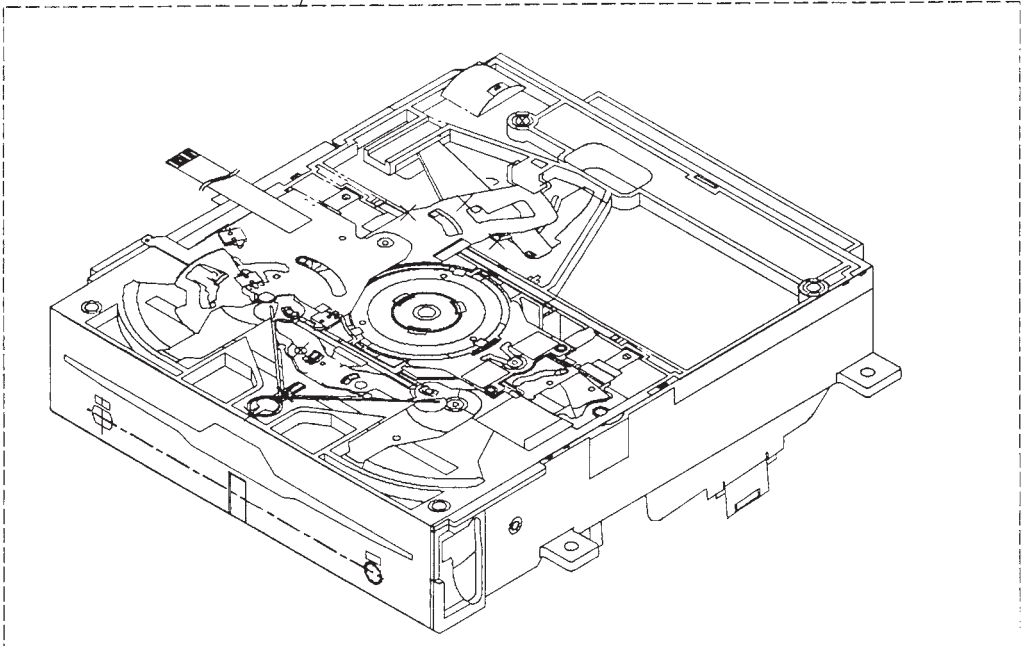
C

D

EXPLODED VIEW OF MECHANISM

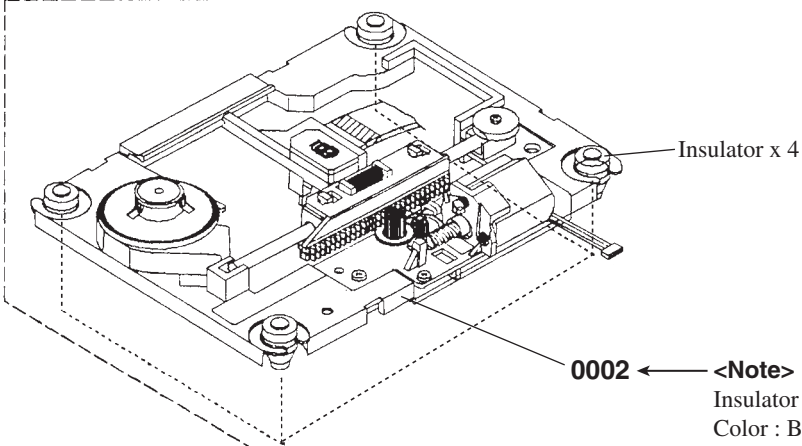
1

0001



2

3



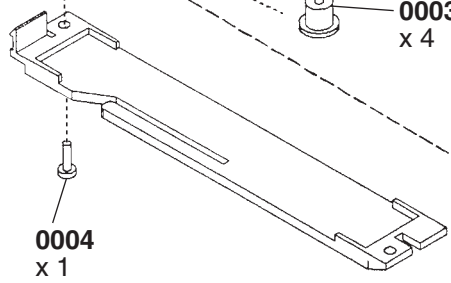
4

0002 <Note>

Insulator x 4 =
Color : Blue (For CBX-100/-300) --- OK
Color : Gray (Other models) --- NG

0003
x 4

5



0004
x 1

SCHEMATIC DIAGRAMS-1 AMPLIFIER SECTION

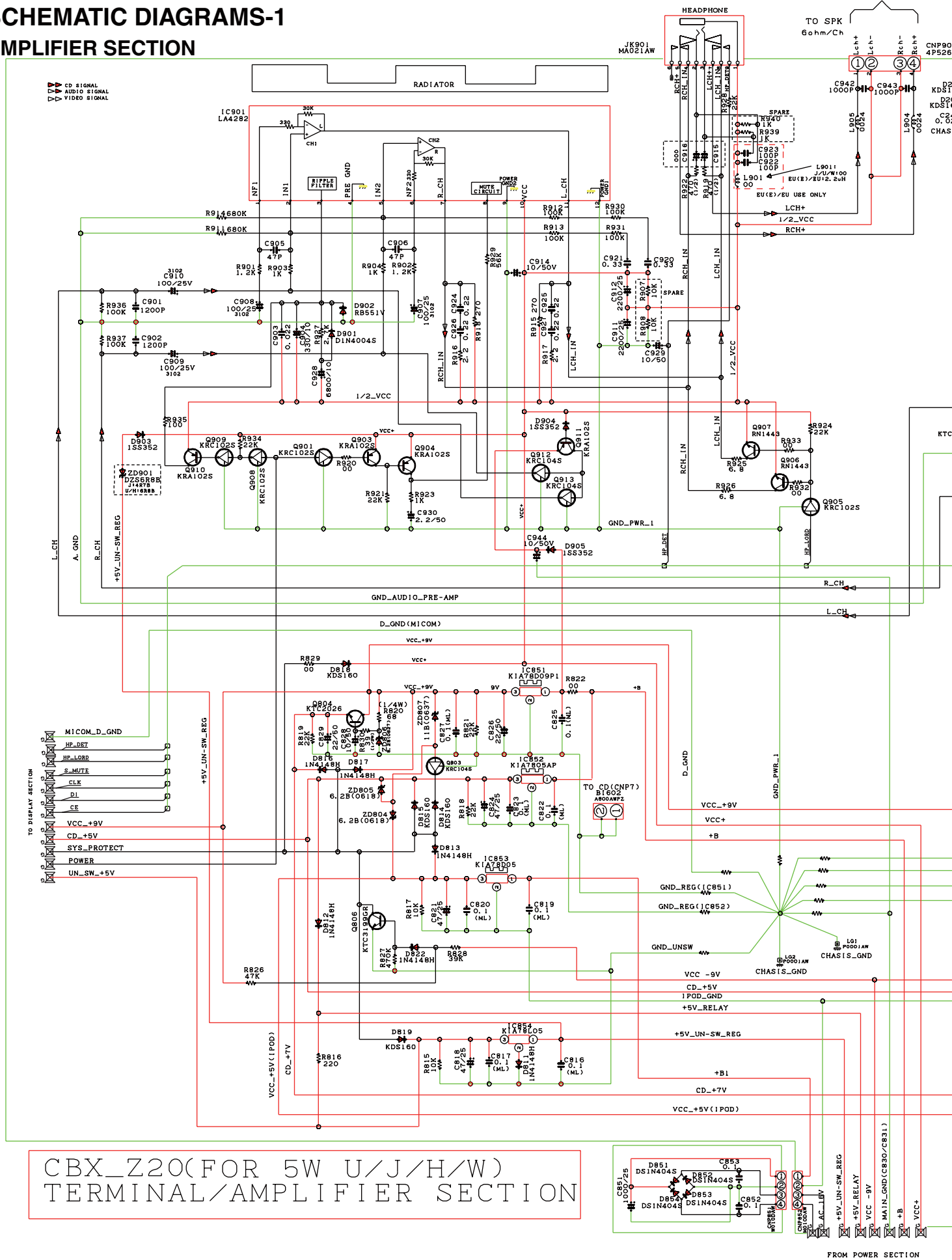
1

2

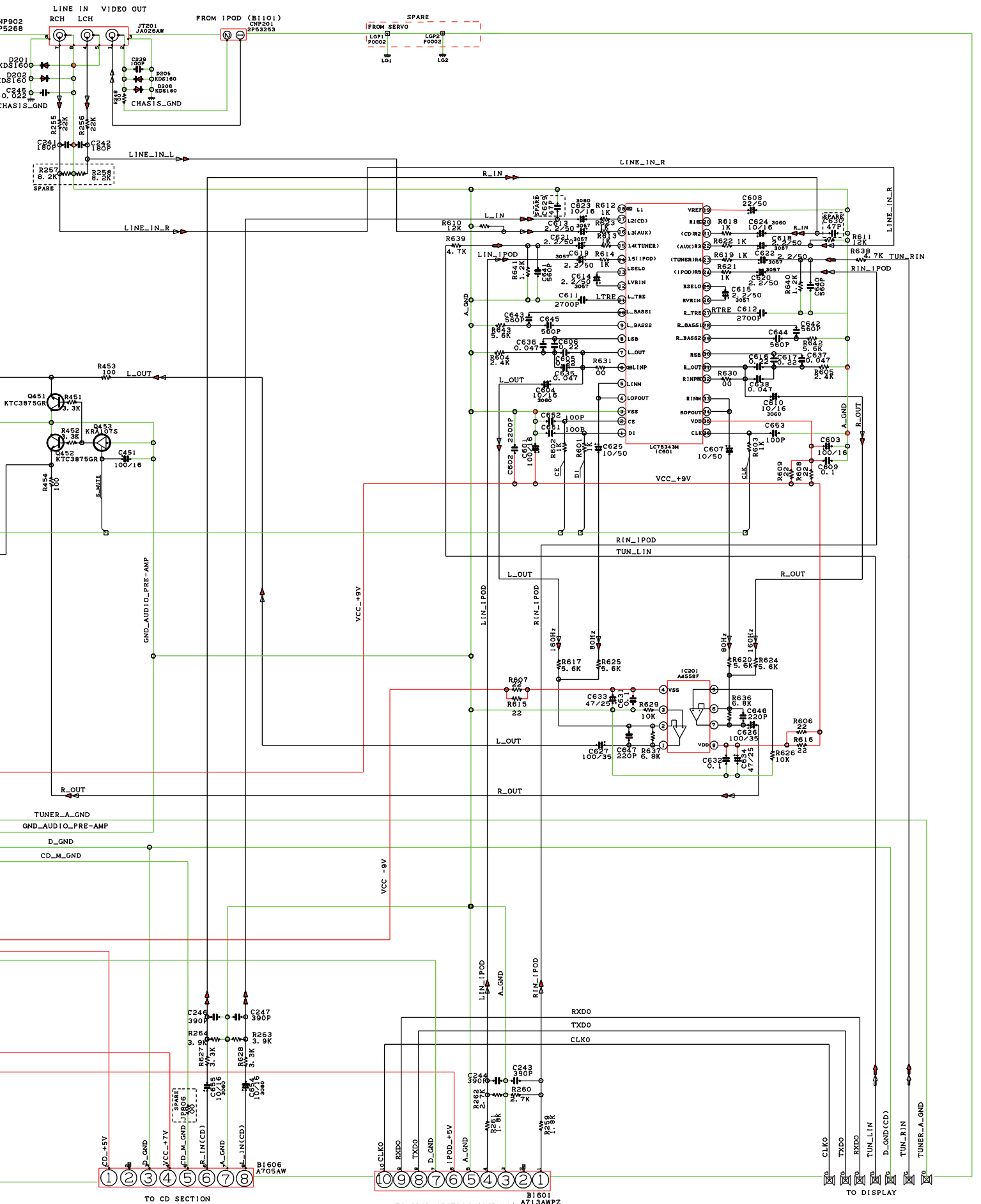
3

4

5



CBX_Z20(FOR 5W U/J/H/W)
TERMINAL/AMPLIFIER SECTION



TO CD SECTION (TO CNP3)

TO IPOD SECTION (CNP102) A713AMPZ

TO DISPLAY

SCHEMATIC DIAGRAMS-2

CD SECTION

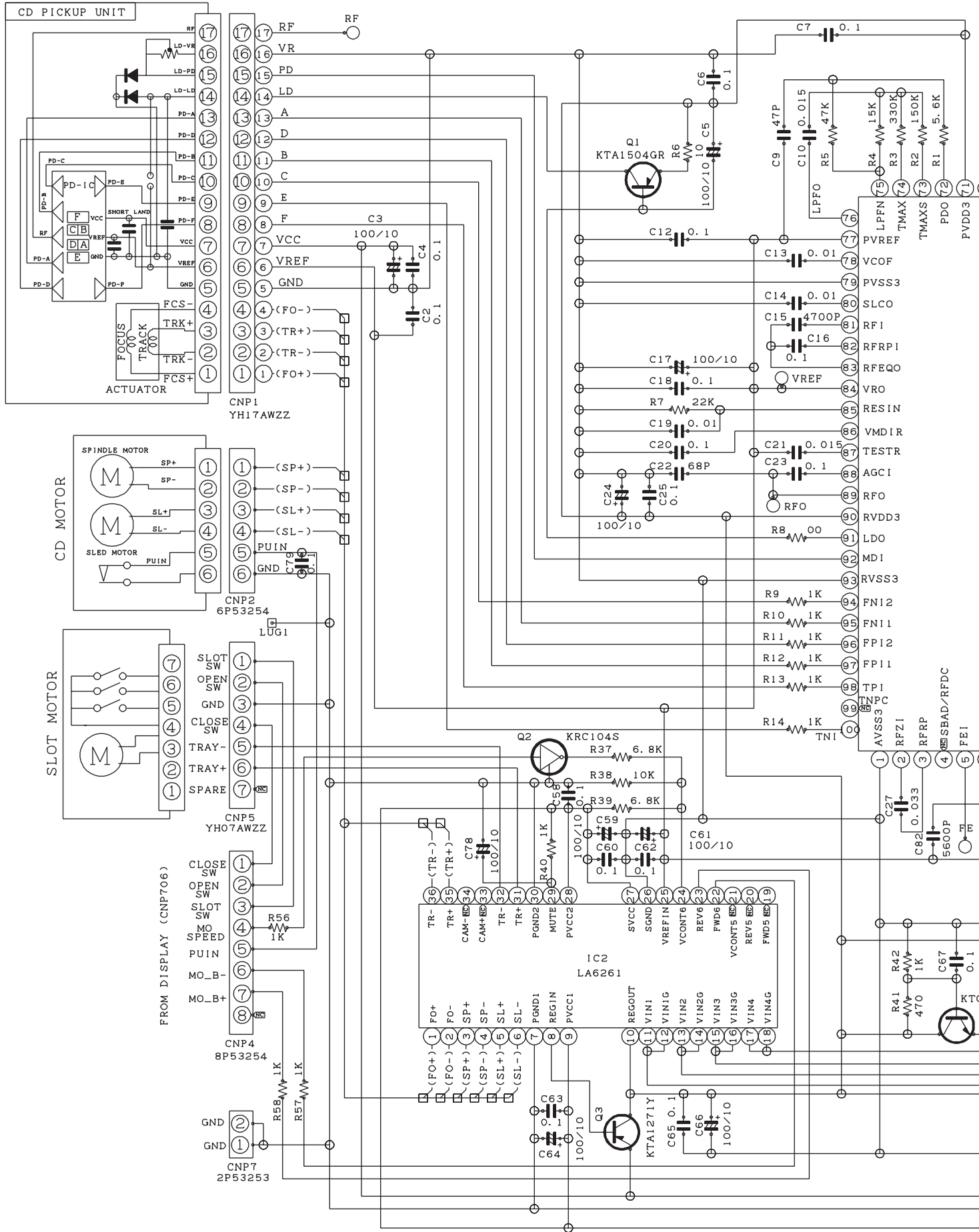
1

2

3

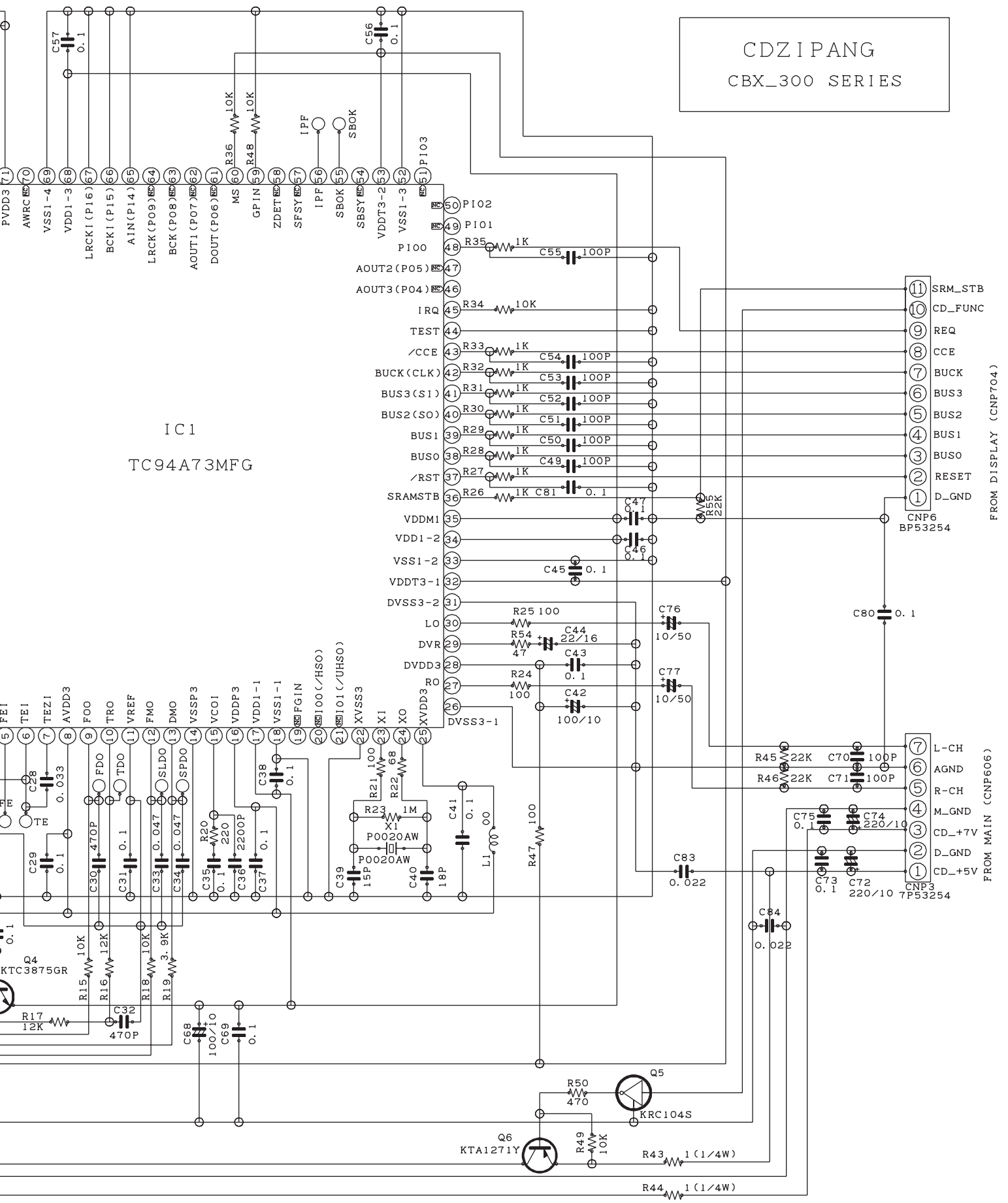
4

5



CDZ I PANG
CBX_300 SERIES

IC1
TC94A73MFG



FROM DISPLAY (CNP704)

FROM MAIN (CNP606)

SCHEMATIC DIAGRAMS-3 DISPLAY / MICOM SECTION

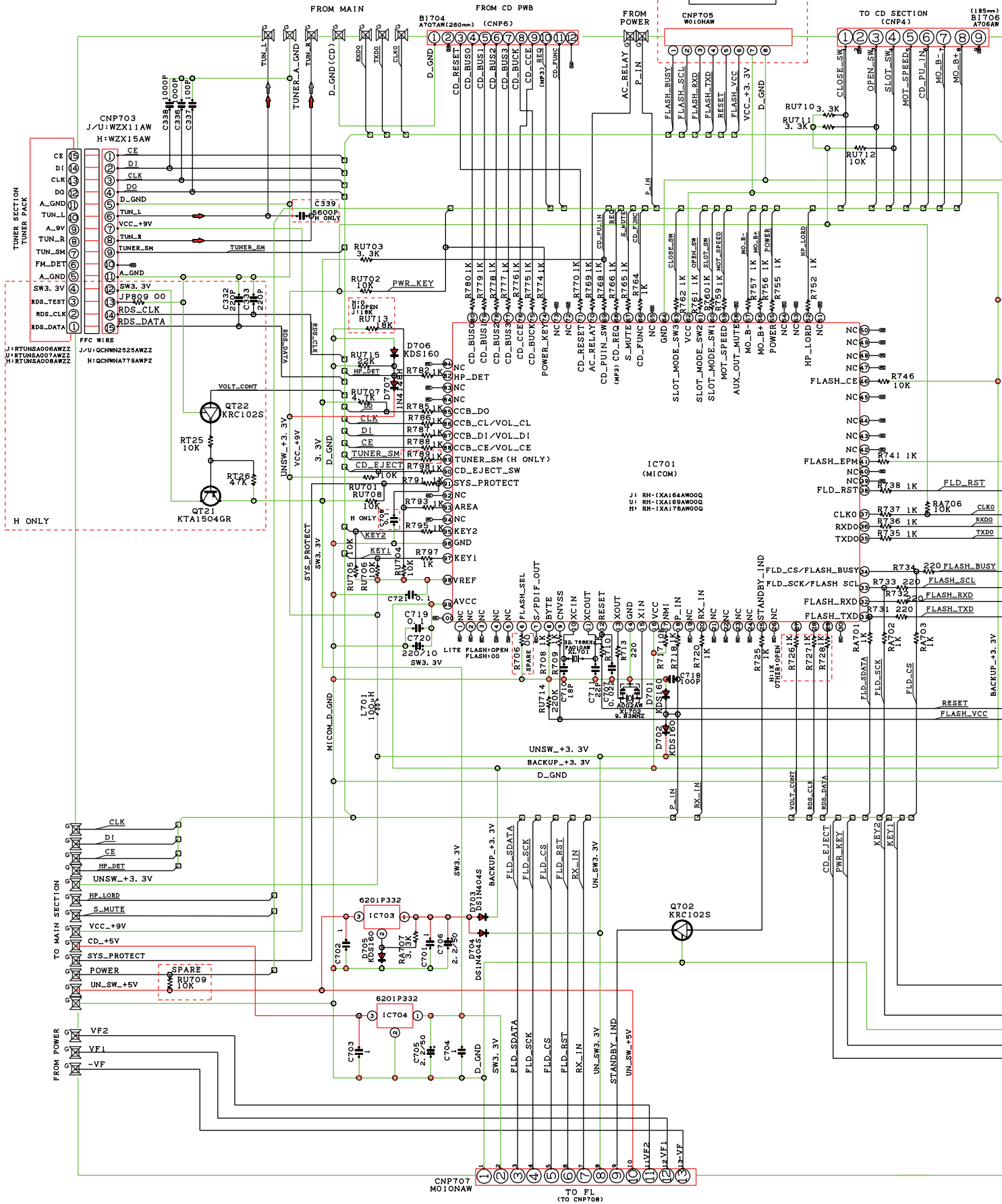
1

2

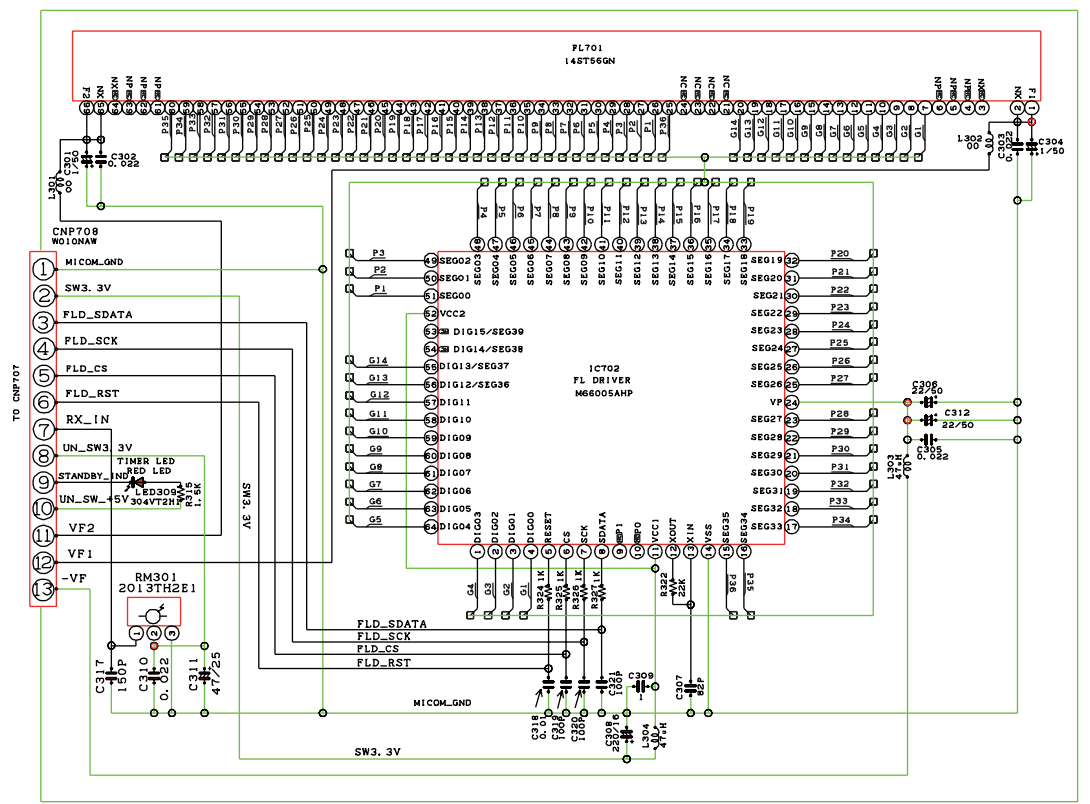
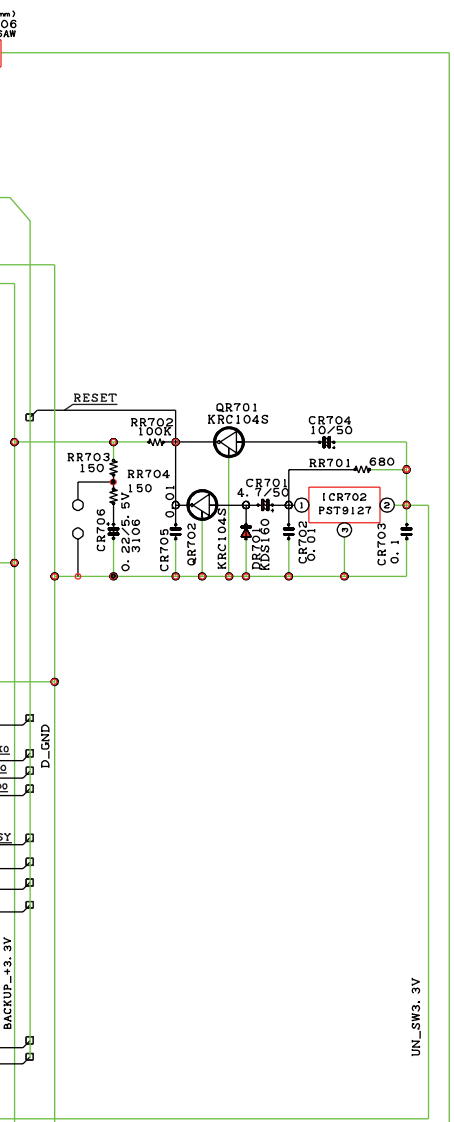
3

4

5

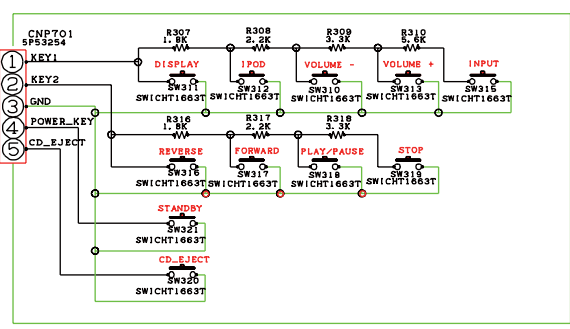
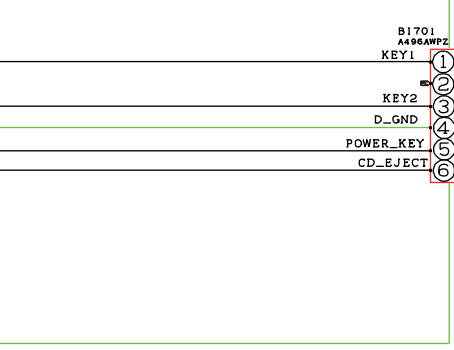


CNP707
MO10AW
TO F1
(TO CNP708)



FM SIGNAL
AM SIGNAL
CD SIGNAL
AUDIO SIGNAL

CBX-Z20/300U/300H(5W J/H/U)
DISPLAY/MICOM SECTION



A

B

C

D

SCHEMATIC DIAGRAMS-4

POWER SECTION

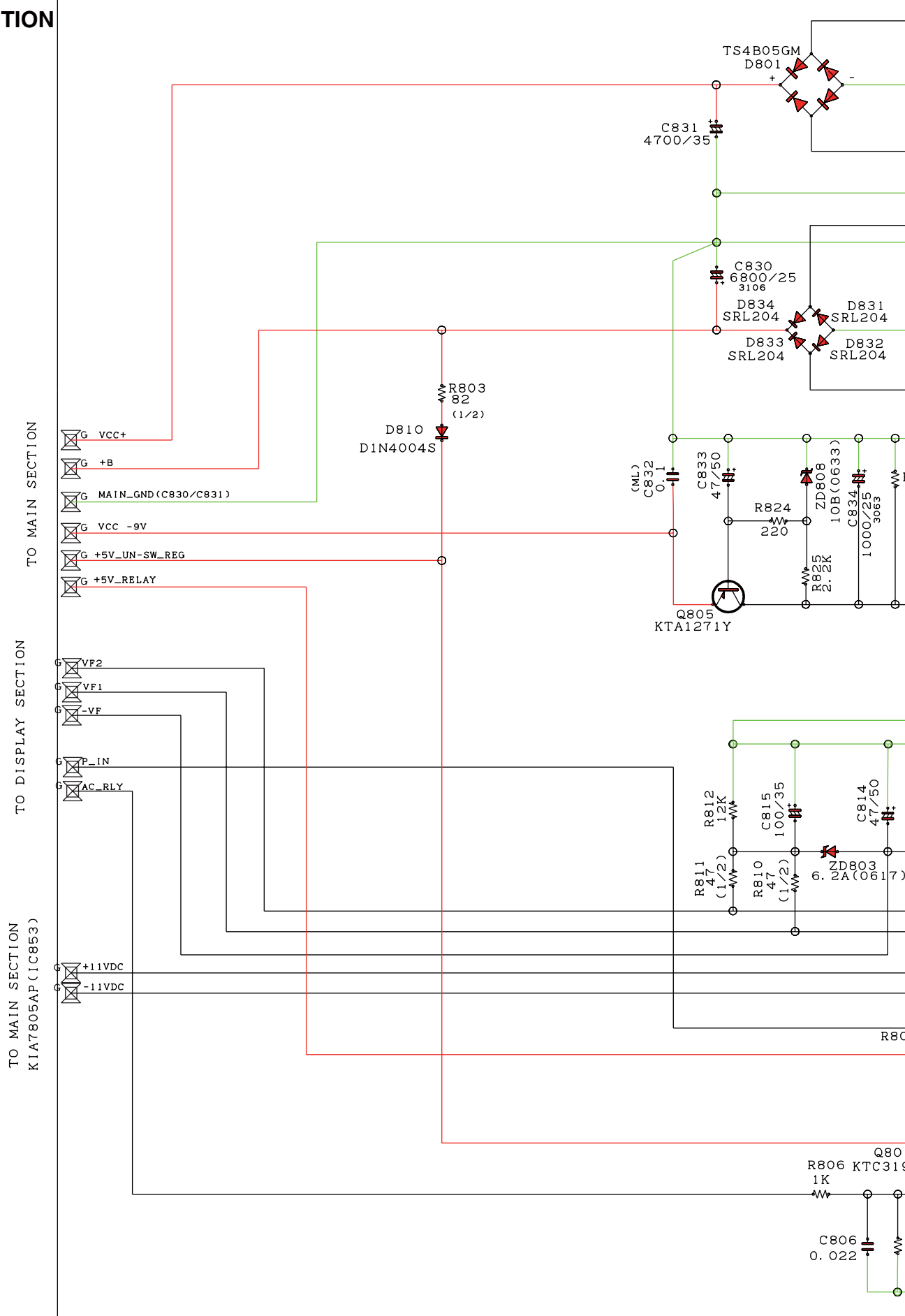
1

2

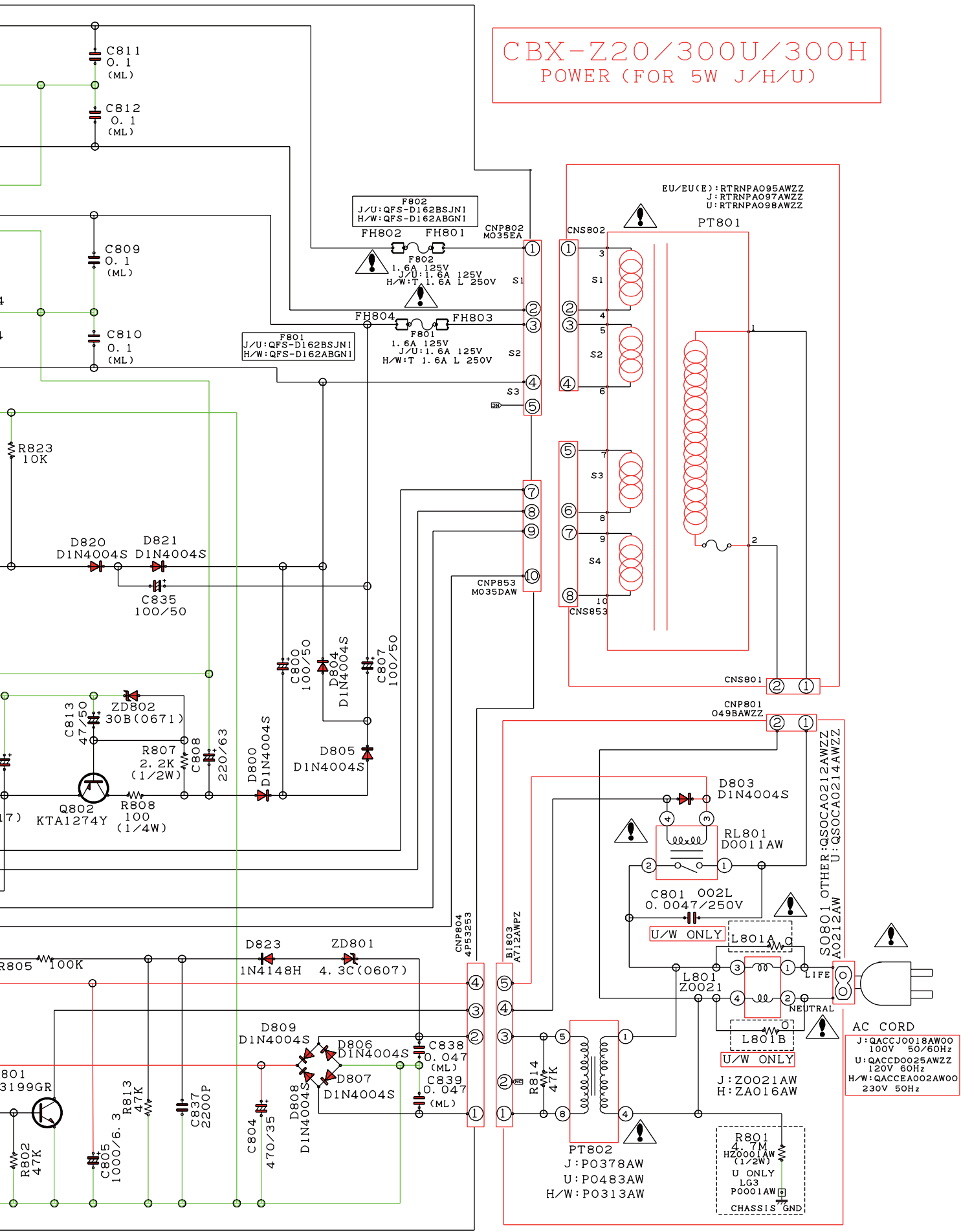
3

4

5



CBX-Z20/300U/300H
POWER (FOR 5W J/H/U)



AC CORD
 J: QACJ0018AW00
 100V 50/60Hz
 U: QACCD0025AWZZ
 120V 60Hz
 H/W: QACCEA002AW00
 230V 50Hz

R801
 4.7M
 HZ0001AW
 (1/2W)
 U ONLY
 LG3
 P0001AW
 CHASSIS GND

PT802
 J: P0378AW
 U: P0483AW
 H/W: P0313AW

J: Z0021AW
 H: ZAO16AW

S0801 OTHER: QS0CA0212AWZZ
 A0212AW U: QS0CA0214AWZZ

CNP801
 049BAWZZ

CNP853
 M035DAW

CNP804
 4P53253

CNP802
 M035EA

F802
 J/U: QFS-D162BSJN1
 H/W: QFS-D162ABGN1

F801
 J/U: QFS-D162BSJN1
 H/W: QFS-D162ABGN1

F801
 1.6A 125V
 J/U: 1.6A 125V
 H/W: T 1.6A L 250V

EU/EU(E): RTRNPA095AWZZ
 J: RTRNPA097AWZZ
 U: RTRNPA098AWZZ

A

B

C

D

SCHEMATIC DIAGRAMS-5

IPOD DOCK SECTION

IPOD CONNECTION *() RESISTOR WITH 0.5% TOLERANCE

1

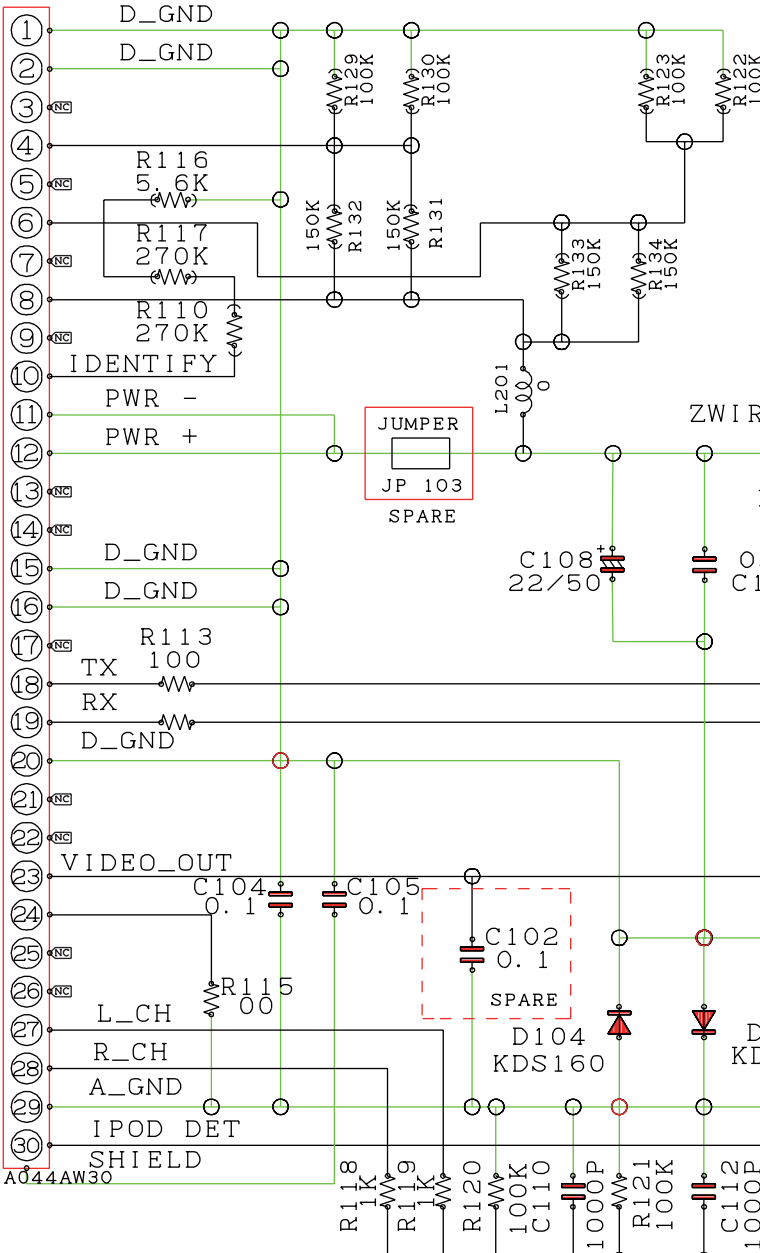
2

3

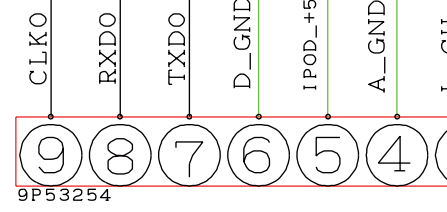
4

5

CNP101



CBX-Z10/Z20
IPOD



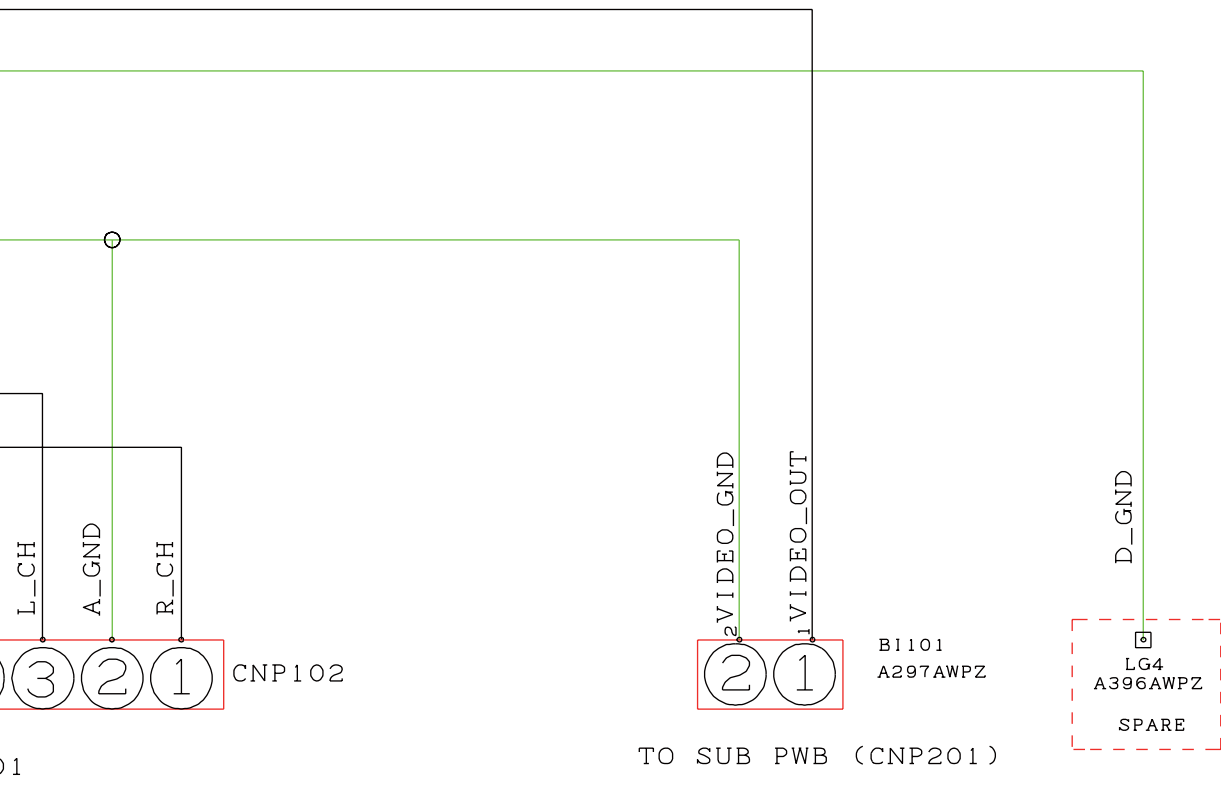
TO MAIN BI601

E

F

G

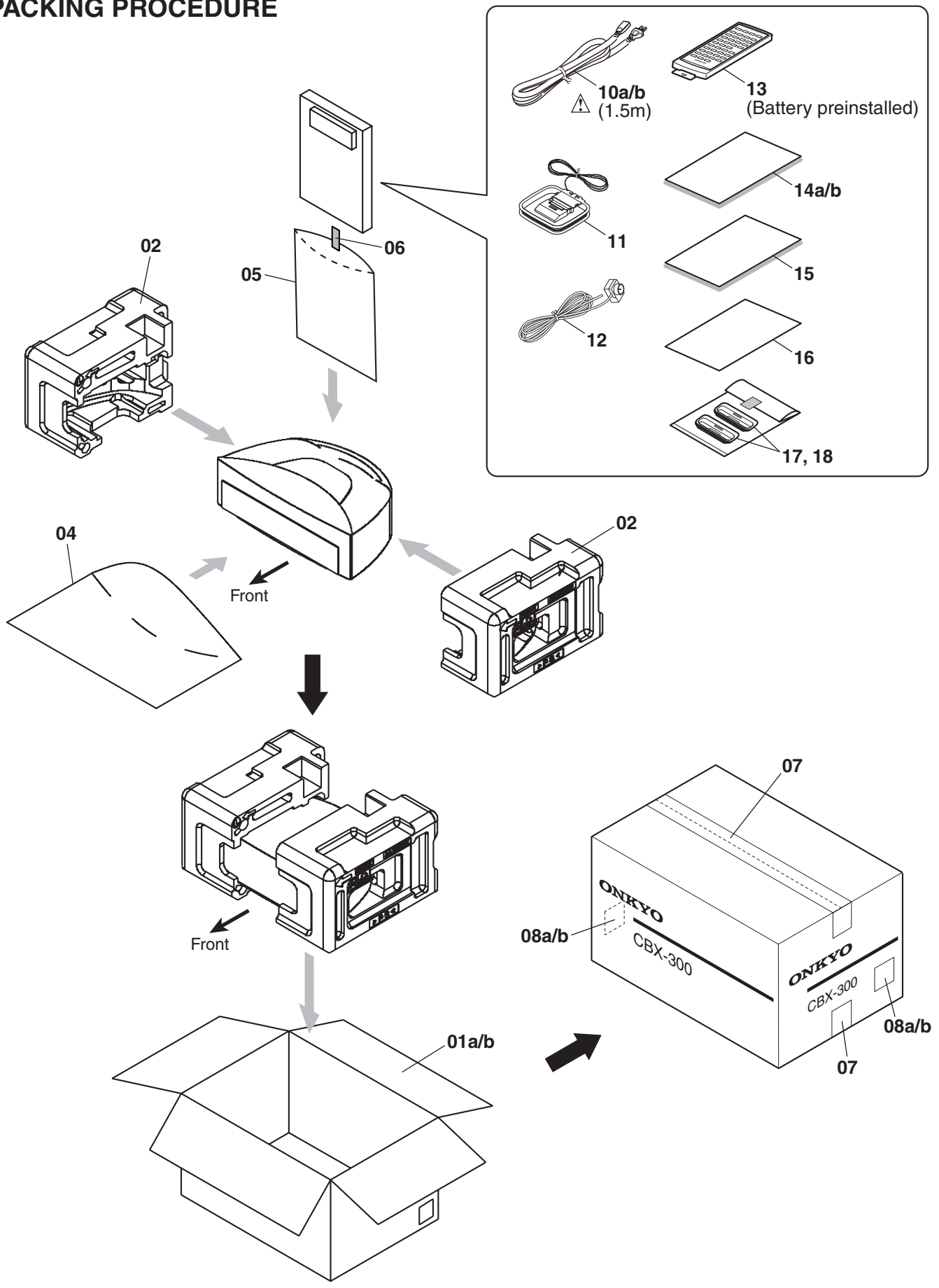
H



01

TO SUB PWB (CNP201)

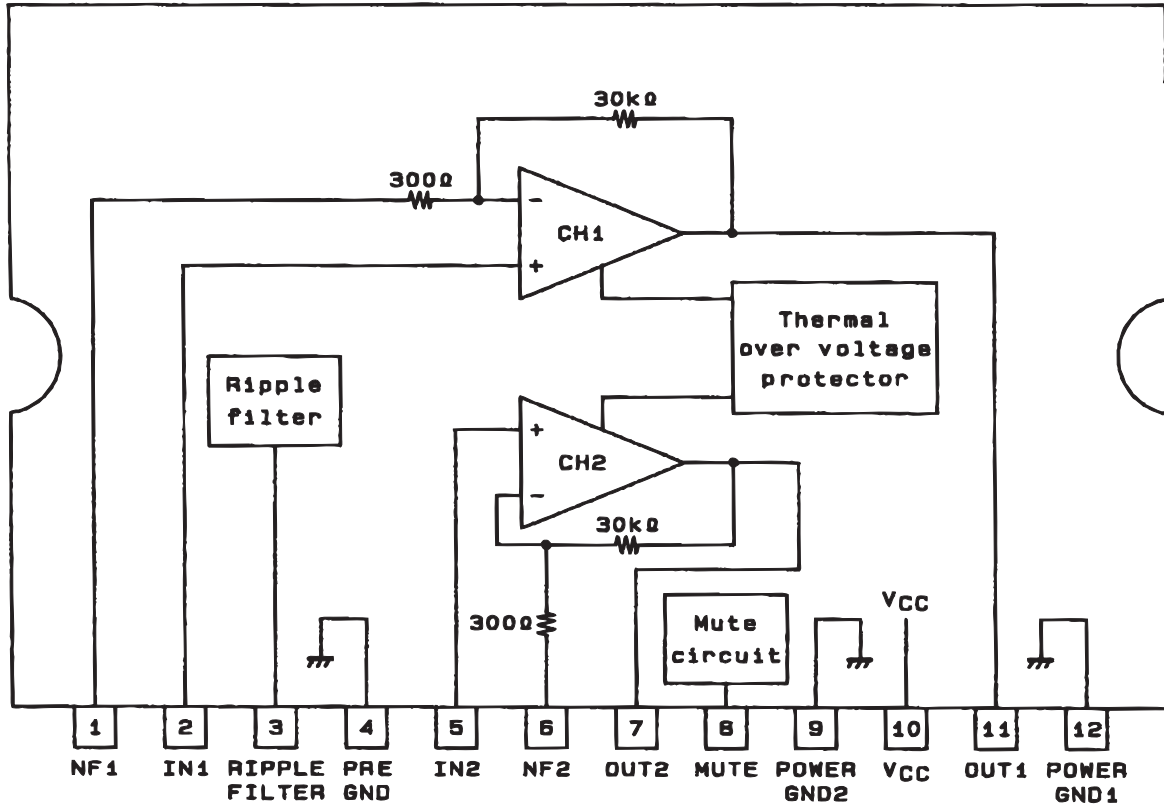
PACKING PROCEDURE



IC BLOCK DIAGRAM AND TERMINAL DESCRIPTION

IC901 : LA4282 (Power Amplifier)

BLOCK DIAGRAM



SERVICE PROCEDURE

PROTECTION OF EYES FROM LASER BEAM DURING SERVICING

This set employs a laser. Therefore, be sure to follow carefully the instructions below when servicing.

WARNING!!

SERVICE WARNING : DO NOT APPROACH THE LASER EXIT WITH THE EYE TOO CLOSELY. IN CASE IT IS NECESSARY TO CONFIRM LASER BEAM EMISSION, BE SURE TO OBSERVE FROM A DISTANCE OF MORE THAN 30cm FROM THE SURFACE OF THE OBJECTIVE LENS ON THE OPTICAL PICKUP BLOCK.

Laser Diode Properties

Material: GaAS/GaAlAs

Wavelength: 760-800nm

Laser output: max. 0.5mW*

Emission Duration: continuous

*This output is the value measured at a distance about 1.8mm from the objective lens surface on the Optical Pickup Block.

Laser warning label

Class 1 label



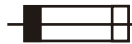
Printed on rear panel

**LUOKAN 1
LASERLAITE
KLASS 1
LASER APPARAT**

Replacing the fuse



This symbol located near the fuse indicates that the fuse used is show operating type, For continued protection against fire hazard, replace with same type fuse , For fuse rating, refer to the marking adjacent to the symbol.



Ce symbole indique que le fusible utilise est e lent. Pour une protection permanente, n'utiliser que des fusibles de meme type. Ce dernier est indique la qu le present symbol est apposse.

REF. NO.	PART NAME	DESCRIPTION	PART NO. (SN)	REMARKS
F801	FUSE	1.6A-T/UL-ST2 (1.6A/125V)	252252GR	<MDC> ⚠
F801	FUSE	1.6A-SE-TL250V (1.6A/250V)	252273GR	<MPP> ⚠
F802	FUSE	1.6A-T/UL-ST2 (1.6A/125V)	252252GR	<MDC> ⚠
F802	FUSE	1.6A-SE-TL250V (1.6A/250V)	252273GR	<MPP> ⚠

Initialize the unit

- (1) Disconnect the AC power cord from the wall outlet.
- (2) Press and hold down the STANDBY/ON button, connect the AC power cord into the wall outlet.

FL display



---> Standby mode

- (3) Disconnect the AC power cord from the wall outlet.

CBX-300**<Note>**

Parts marked by "NSP" are generally unavailable because they are not in our Master Spare Parts List.

**NOTE : THE COMPONENTS IDENTIFIED BY THE MARK
! ARE CRITICAL FOR RISK OF FIRE AND
ELECTRIC SHOCK. REPLACE ONLY WITH PART
NUMBER SPECIFIED.**

<Notes>

<MDC> : Canadian model

<MPP> : European model

EXPLODED VIEW PARTS LIST

	REF. NO.	PART NAME / DESCRIPTION	Q'TY	PART NO. (SN)	REMARKS
EXPLODED	TRANSFORMER				
EXPLODED	PT 801	Power (Main)	01	RTRNPA098AWZZ	!<MDC>
EXPLODED	PT 801	Power (Main)	01	RTRNPA095AWZZ	!<MPP>
EXPLODED	FL TUBE				
EXPLODED	FL 701	FL Display	01	VVK14ST56GN-1	
EXPLODED	TUNER UNIT				
EXPLODED	E 8	Tuner Pack	01	RTUNSA007AWZZ	<MDC>
EXPLODED	E 8	Tuner Pack	01	RTUNSA008AWZZ	<MPP>
EXPLODED	CABINET PARTS				
EXPLODED	E 10	Speaker Wire	01	QCNWNA710AWPZ	NSP
EXPLODED	E 13	Flat Cable,11Pin	01	QCNWN2525AWZZ	
EXPLODED	M 01	Mach Chassis	01	LCHSMA072AWFW	
EXPLODED	M 02	Heat Sink	01	PRDARA123AWFW	NSP
EXPLODED	M 03	Bracket, Support Angle	03	LANGT0042AWFW	NSP
EXPLODED	M 04	Bracket, Servo PWB R	01	LANGKA102AWFW	NSP
EXPLODED	M 05	Bracket, Servo PWB L	01	LANGKA128AWFW	NSP
EXPLODED	M 06	Back Plate	01	GITARA475AWSA	N <MDC>
EXPLODED	M 06	Back Plate	01	GITARA473AWSA	N <MPP>
EXPLODED	M 07	Holder,Fuse	04	QFSDH0001AWZZ	
EXPLODED	M 08	Bracket, Handle Support	02	LANGKA135AWFW	N
EXPLODED	P 01	Front Panel	01	HPNLCA083AWSA	
EXPLODED	P 02	Rear Cabinet	01	GCABBA076AWSA	N
EXPLODED	P 03	Console Box A	01	GBOXSA170AWZZ	
EXPLODED	P 04	Console Box B	01	GBOXSA171AWZZ	
EXPLODED	P 05	FL Window	01	HDECQA411AWSA	N
EXPLODED	P 06	Bottom Panel	01	HDECQA312AWSB	
EXPLODED	P 07	Button, Function	01	JKNBZA207AWSB	N
EXPLODED	P 08	Top Cabinet	01	GCABCA078AWSB	N
EXPLODED	P 09	Net Frame	01	GWAKPA042AWSA	N
EXPLODED	P 10	CD Decoration Panel	01	HDECQA396AWSA	
EXPLODED	P 11	PT Holder	02	LHLDZA148AWZZ	NSP
EXPLODED	P 12	FL Holder	01	LHLDZA146AWZZ	NSP
EXPLODED	P 13	Duct Wall Panel L	01	HDECQA397AWZZ	
EXPLODED	P 14	Duct Wall Panel R	01	HDECQA398AWZZ	
EXPLODED	P 15	Docking Holder	01	LHLDZA145AWSB	N
EXPLODED	P 16	Docking Cover	01	GCOVAA151AWSB	N
EXPLODED	P 17	Handle	01	JHNDPA006AWSA	N

EXPLODED	Z	01	Sheet, Fl Window A	01	PSHEZA108AWZZ	
EXPLODED	Z	02	Sheet, Fl Window B	01	PSHEZA110AWZZ	
EXPLODED	Z	03	Cushion,Leg	04	PCUSG0022AWZZ	
EXPLODED	Z	04	Sheet, CD Door	01	PSHEPA089AWZZ	
EXPLODED	Z	05	Terminal Cover	01	GCOVD1006AWSB	NSP
EXPLODED	Z	06	Sheet, Bottom Panel A	02	PSHEZA107AWZZ	
EXPLODED	Z	07	Sheet, Bottom Panel B	02	PSHEZA114AWZZ	
EXPLODED	Z	08	Speaker Unit	02	PD8180AA	
EXPLODED	Z	09	Felt, Console Box A	07	PFLT-A068AWZZ	NSP
EXPLODED	Z	10	Felt, Console Box C	01	PFLT-A070AWZZ	NSP
EXPLODED	Z	11	Felt, Duct Wall A	02	PFLT-A116AWZZ	
EXPLODED	Z	12	Front Reticulated	04	PKYU-A027AWZZ	N
EXPLODED	Z	13	Sheet, FL Panel	01	PSHEZA136AWZZ	
EXPLODED	Z	14	White Wool A	02	PKYU-A021AWZZ	NSP
EXPLODED	Z	15	White Wool B	02	PKYU-A023AWZZ	NSP
EXPLODED	Z	16	Cushion, Duct Port	02	PCUSZA017AWZZ	NSP
EXPLODED	Z	17	Cloth Tape (W8x50mm cut)	02	29110082	
EXPLODED	Z	18	Cloth Tape (W16x20mm cut)	02	29110083	
EXPLODED	Z	19	Cloth Tape (W16x90mm cut)	01	29110083	
EXPLODED	Z	20	Reticulated Foam A	02	PKYU-A022AWZZ	NSP
EXPLODED	Z	21	Reticulated Foam C	02	PKYU-A026AWZZ	NSP
EXPLODED	Z	22	Felt, Button	11	PFLT-A080AWZZ	NSP
EXPLODED	Z	23	Felt, Top Cabinet A	04	PFLT-A078AWZZ	
EXPLODED	Z	24	Felt, Top Cabinet B	05	PFLT-A079AWZZ	
EXPLODED	Z	25	Cushion, Button A	01	PCUSGA124AWZZ	N
EXPLODED	Z	26	Cushion, Button B	01	PCUSGA102AWZZ	NSP
EXPLODED	Z	27	Cushion, Button, C	02	PCUSGA125AWZZ	N
EXPLODED	Z	28	Cushion, Button D	02	PCUSGA104AWZZ	NSP
EXPLODED	Z	29	Washer	02	XWHBZ33-05060	N
EXPLODED		901	Screw,M2.6x6mm	03	XEBY726P06000	NSP
EXPLODED		902	Screw,M2.6x8mm	17	XEBY726P08000	NSP
EXPLODED		903	Screw,M2.6x10mm	17	XEBY726P10000	
EXPLODED		904	Screw,M3x10mm	28	XEBY730P10000	NSP
EXPLODED		905	Screw,M4x10mm	12	XEBY840P10000	NSP
EXPLODED		906	Screw,M3x12mm	04	XEBY730P12000	NSP
EXPLODED		907	Screw,M3x6mm	07	XJBY730P06000	NSP
EXPLODED		908	Screw,M3x8mm	05	XJBY730P08000	NSP
EXPLODED		909	Screw,M3x4mm	03	XHBY730P04000	NSP
EXPLODED		910	Screw,M4x12mm	02	XEBY740P12000	NSP
EXPLODED		911	Screw,M3x8mm	02	XJBY830P08000	NSP
EXPLODED		912	Screw,M3x8mm	17	LX-BZA031AWF8	NSP
EXPLODED		913	Screw,M3x10mm	04	LX-BZA032AWF8	NSP
EXPLODED		914	Screw,M3x30mm	03	LX-BZA033AWF8	NSP
EXPLODED		915	Screw,M3x12mm	05	LX-JZ0036AWF7	NSP
EXPLODED		916	Screw,M3x10mm	04	LX-BZA037AWF8	N
EXPLODED	MECHANISM PARTS					
EXPLODED	E	1	CD mecha	01	-	NSP
EXPLODED		0001	Loading Mechanism Ass'y	01	KMECZA003AWZZ	
EXPLODED		0002	CD Pickup Mechanism Ass'y	01	92LCDMECA6915A	
EXPLODED		0003	Screw	04	LX-EZA002AWF7	NSP
EXPLODED		0004	Screw, M2 x 6mm	01	XEBY720P06000	NSP

EXPLODED PWB ASS'Y						
EXPLODED	E	2		Main PWB	01	*** <MDC>
EXPLODED	E	2		Main PWB	01	*** <MPP>
EXPLODED	E	3		CD Servo PWB	01	92LPWB6915CDUS
EXPLODED	E	4		Power PWB	01	*** <MDC>
EXPLODED	E	4		Power PWB	01	*** <MPP>
EXPLODED	E	5		Function PWB	01	*** <MDC>
EXPLODED	E	5		Function PWB	01	*** <MPP>
EXPLODED	E	6		FL PWB	01	*** <MDC>
EXPLODED	E	6		FL PWB	01	*** <MPP>
EXPLODED	E	11		i-pod PWB	01	- NSP
EXPLODED	E	12		i-pod Power PWB	01	- NSP

CBX-300**<Note>**

Parts marked by "NSP" are generally unavailable because they are not in our Master Spare Parts List.

**NOTE : THE COMPONENTS IDENTIFIED BY THE MARK
! ARE CRITICAL FOR RISK OF FIRE AND
ELECTRIC SHOCK. REPLACE ONLY WITH PART
NUMBER SPECIFIED.**

<Notes>

<MDC> : Canadian model

<MPP> : European model

PRINTED CIRCUIT BOARD PARTS LIST

	CIRCUIT NO.	PART NAME / DESCRIPTION	Q'TY	PART NO. (SN)	REMARKS
PWB	IC				
PWB	IC 1	CD/MP3 Decoder, TC94A73MFG	01	VHITC94A73MFG	
PWB	IC 2	Focus / Tracking / Spin / Sled Driver, LA6261	01	VHILA6261/-1	
PWB	IC 601	Audio Processor, LC75343M	01	VHILC75343M-1	
PWB	IC 701	Microcomputer, IXA169AW	01	RH-IXA169AW00	
PWB	IC 702	FL Driver, M66005AHP	01	VHIM66005AHP1	
PWB	IC 901	Power Amp., LA4282	01	VHILA4282/-1	
PWB	ICR 702	Reset, PST9127	01	VHIPST9127/-1	NSP
PWB	FUSE				
PWB	F 801	1.6A-T/UL-ST2 (1.6A/125V)	01	252252GR	! <MDC>
PWB	F 801	1.6A-SE-TL250V (1.6A/250V)	01	252273GR	! <MPP>
PWB	F 802	1.6A-T/UL-ST2 (1.6A/125V)	01	252252GR	! <MDC>
PWB	F 802	1.6A-SE-TL250V (1.6A/250V)	01	252273GR	! <MPP>
PWB	TRANSFORMER				
PWB	PT 802	Power (Sub)	01	RTRNP0483AWZZ	! <MDC>
PWB	PT 802	Power (Sub)	01	RTRNP0313AWZZ	! <MPP>
PWB	OTHER CIRCUITRY PARTS				
PWB	BI 101	Connector Ass'y, 2/2Pin	01	QCNWNA297AWPZ	
PWB	BI 601	Connector Ass'y,	01	QCNWNA713AWPZ	
PWB	BI 602	Connector Ass'y, 2/2Pin	01	QCNWNA800AWPZ	
PWB	BI 606	Connector Ass'y,	01	QCNWNA705AWPZ	
PWB	BI 701	Connector Ass'y, 6/5Pin	01	QCNWNA496AWPZ	
PWB	BI 704	Connector Ass'y,	01	QCNWNA707AWPZ	
PWB	BI 706	Connector Ass'y,	01	QCNWNA706AWPZ	
PWB	BI 803	Connector Ass'y,	01	QCNWNA712AWPZ	
PWB	CNP 1	Socket	01	QCNCWYH17AWZZ	
PWB	CNP 2	Plug, 6Pin	01	92LCONE6P53254	
PWB	CNP 3	Plug, 7Pin	01	92LCONE7P53254	
PWB	CNP 4	Plug, 8Pin	01	92LCONE8P53254	
PWB	CNP 5	Socket, 5Pin	01	QCNCWYH07AWZZ	
PWB	CNP 6	Plug, 11Pin	01	92LCONEBP53254	
PWB	CNP 7	Plug, 2Pin	01	92LCONE2P53254	
PWB	CNP 101	Socket, 30Pin	01	QCNCWA047AW30	N
PWB	CNP 102	Plug, 9Pin	01	92LCONE9P53254	
PWB	CNP 201	Plug, 2Pin	01	92LCONE2P53253	
PWB	CNP 701	Plug, 5Pin	01	92LCONE5P53254	
PWB	CNP 703	Socket, 11Pin	01	QCNCWZX11AWZZ	

PWB	CNP	705		Socket, 8Pin	01	QCNCW010HAWZZ	
PWB	CNP	707		Plug, 13Pin	01	QCNCM010NAWZZ	
PWB	CNP	708		Socket, 13Pin	01	QCNCW010NAWZZ	
PWB	CNP	801		Plug, 2Pin	01	QCNCM049BAWZZ	
PWB	CNP	802		Plug, 5Pin	01	QCNCM035EAWZZ	
PWB	CNP	804		Plug, 4Pin	01	92LCONE4P53253	
PWB	CNP	851		Connector Ass'y, 4Pin	01	QCNCW010DAWZZ	
PWB	CNP	852		Plug, 4Pin	01	QCNCM010DAWZZ	
PWB	CNP	853		Plug, 4Pin	01	QCNCM035DAWZZ	
PWB	CNP	902		Plug, 4Pin	01	92LCONE4P5268	
PWB	JK	901		Jack, Headphones	01	QJAKMA012AWZZ	
PWB	JT	201		Jack, RCA	01	QSOCJA026AWZZ	
PWB	LG	1		Lug	01	QLUGP0001AWZZ	
PWB	LG	2		Lug	01	QLUGP0001AWZZ	
PWB	LG	3		Lug	01	QLUGP0001AWZZ	
PWB	RL	801		Relay	01	RRLYD0011AWZZ	
PWB	RM	301		Remote Sensor, 2013TH2E1	01	VHLK2013TH2E1	
PWB	SO	801		Socket AC Input	01	QSOCA0214AWZZ	
PWB	SW	310		Switch, Key Type	01	92LSWICHT1663	
PWB	SW	311		Switch, Key Type	01	92LSWICHT1663	
PWB	SW	312		Switch, Key Type	01	92LSWICHT1663	
PWB	SW	313		Switch, Key Type	01	92LSWICHT1663	
PWB	SW	315		Switch, Key Type	01	92LSWICHT1663	
PWB	SW	316		Switch, Key Type	01	92LSWICHT1663	
PWB	SW	317		Switch, Key Type	01	92LSWICHT1663	
PWB	SW	318		Switch, Key Type	01	92LSWICHT1663	
PWB	SW	319		Switch, Key Type	01	92LSWICHT1663	
PWB	SW	320		Switch, Key Type	01	92LSWICHT1663	
PWB	SW	321		Switch, Key Type	01	92LSWICHT1663	

CBX-300**<Note>**

Parts marked by 'NSP' are generally unavailable because they are not in our Master Spare Parts List.

**NOTE : THE COMPONENTS IDENTIFIED BY THE MARK
! ARE CRITICAL FOR RISK OF FIRE AND
ELECTRIC SHOCK. REPLACE ONLY WITH PART
NUMBER SPECIFIED.**

<Notes>

<MDC> : Canadian model

<MPP> : European model

PACKING PROCEDURE PARTS LIST

	REF. NO.	PART NAME	DESCRIPTION	Q'TY	PART NO. (SN)	REMARKS
PACKING	01a	PACKING CASE	CBX-300 MDC CARTON BOX	1	SPAKCA506AWZZ	<MDC>
PACKING	01b	PACKING CASE	CBX-300 MPP CARTON BOX	1	SPAKCA497AWZZ	<MPP>
PACKING	02	PACKING PAD	PAD (L/R 1set)	1	SPAKAA169AWZZ	
PACKING	04	POLY BAG	(For SET)	1	SSAKH0148AWZZ	
PACKING	05	POLY BAG	350 x 250	1	29100250A	
PACKING	06	TAPE	NITTO NO.29 W18 (Yellow)	(1)	29110149	
PACKING	07	PP TAPE or	W50	(1)	29110071 or	
PACKING	07	PP TAPE or	W48 OPP TAPE	(1)	29110148 or	
PACKING	07	PP TAPE	NITTO 3703 SUPER W50L100	(1)	29110176	
PACKING	08a	UPC LABEL	CBX-300	(1)	---	NSP <MDC>
PACKING	08b	EAN LABEL	CBX-300	(1)	---	NSP <MPP>
PACKING	10a	AC POWER SUPPLY CORD	1.5m	1	QACCD0025AWZZ	! <MDC>
PACKING	10b	AC POWER SUPPLY CORD	1.5m	1	QACCE002AW00	! <MPP>
PACKING	11	ANT COIL	NMA-3057	1	232140	
PACKING	12	FM ANT AS	Type D	1	292189	<MDC>
PACKING		Change			Change	
PACKING		FM ANT AS	Type D	1	292191	<MDC>
PACKING	12	FM ANT AS	Type D	1	292191	<MPP>
PACKING	13	REMO CON	RC-713S (24140713)	1	RRMCGA144AWSA	
PACKING	14a	OPERATION MANUAL	U3EnFrEs(CBX-300)(29344625)	1	TINSZA296AWZZ	<MDC>
PACKING	14b	OPERATION MANUAL	U3EnFrEs(CBX-300)(29344626)	1	TINSZA283AWZZ	<MPP>
PACKING	15	OPERATION MANUAL	U2DeIt(CBX-300)(29344747)	1	TINSZA314AWZZ	<MPP>
PACKING	16	WRNTY CARD	(ONKYO)	1	29365102A	<MDC>
PACKING	17	IPOD DOCK ADAPTER	ADAPTER A (BLACK)	1	GCOVAA175AWSB	
PACKING	18	IPOD DOCK ADAPTER	ADAPTER B (BLACK)	1	GCOVAA176AWSB	

ONKYO CORPORATION

Sales & Product Planning Div. : 2-1, Nisshin-cho, Neyagawa-shi, OSAKA 572-8540, JAPAN
Tel: 072-831-8023 Fax: 072-831-8124

ONKYO U.S.A. CORPORATION

18 Park Way, Upper Saddle River, N.J. 07458, U.S.A.
Tel: 201-785-2600 Fax: 201-785-2650 <http://www.us.onkyo.com/>

ONKYO EUROPE ELECTRONICS GmbH

Liegnitzerstrasse 6, 82194 Groebenzell, GERMANY
Tel: +49-8142-4401-0 Fax: +49-8142-4401-555 <http://www.eu.onkyo.com/>

ONKYO EUROPE UK Office

Suite 1, Gregories Court, Gregories Road, Beaconsfield, Buckinghamshire, HP9 1HQ
UNITED KINGDOM Tel: +44-(0)1494-681515 Fax: +44(0)-1494-680452

ONKYO CHINA LIMITED

Units 2102-2107, Metroplaza Tower I, 223 Hing Fong Road, Kwai Chung,
N.T., HONG KONG Tel: 852-2429-3118 Fax: 852-2428-9039
<http://www.ch.onkyo.com/>

