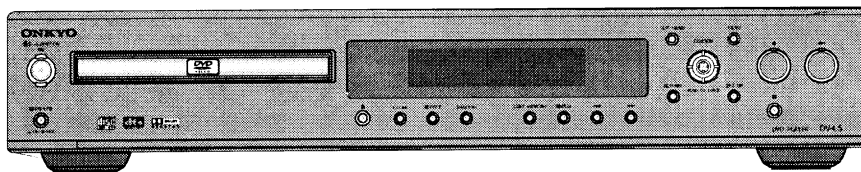


Ref. No. 3695
082001

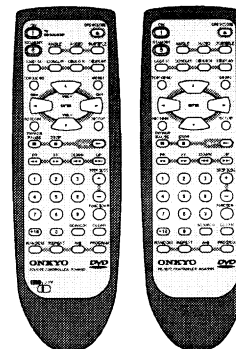
ONKYO® SERVICE MANUAL

DVD Player

DV-L5



Silver and Titanium color models



RC-449DV
<MDD>

RC-450DV
<MUP, MUT,
MUS, MUR>

MDD	120V AC, 60Hz
MUP, MUT, MUS, MUR	100 - 240V, 50/60Hz

PCB Layout

SAFETY-RELATED COMPONENT WARNING!!

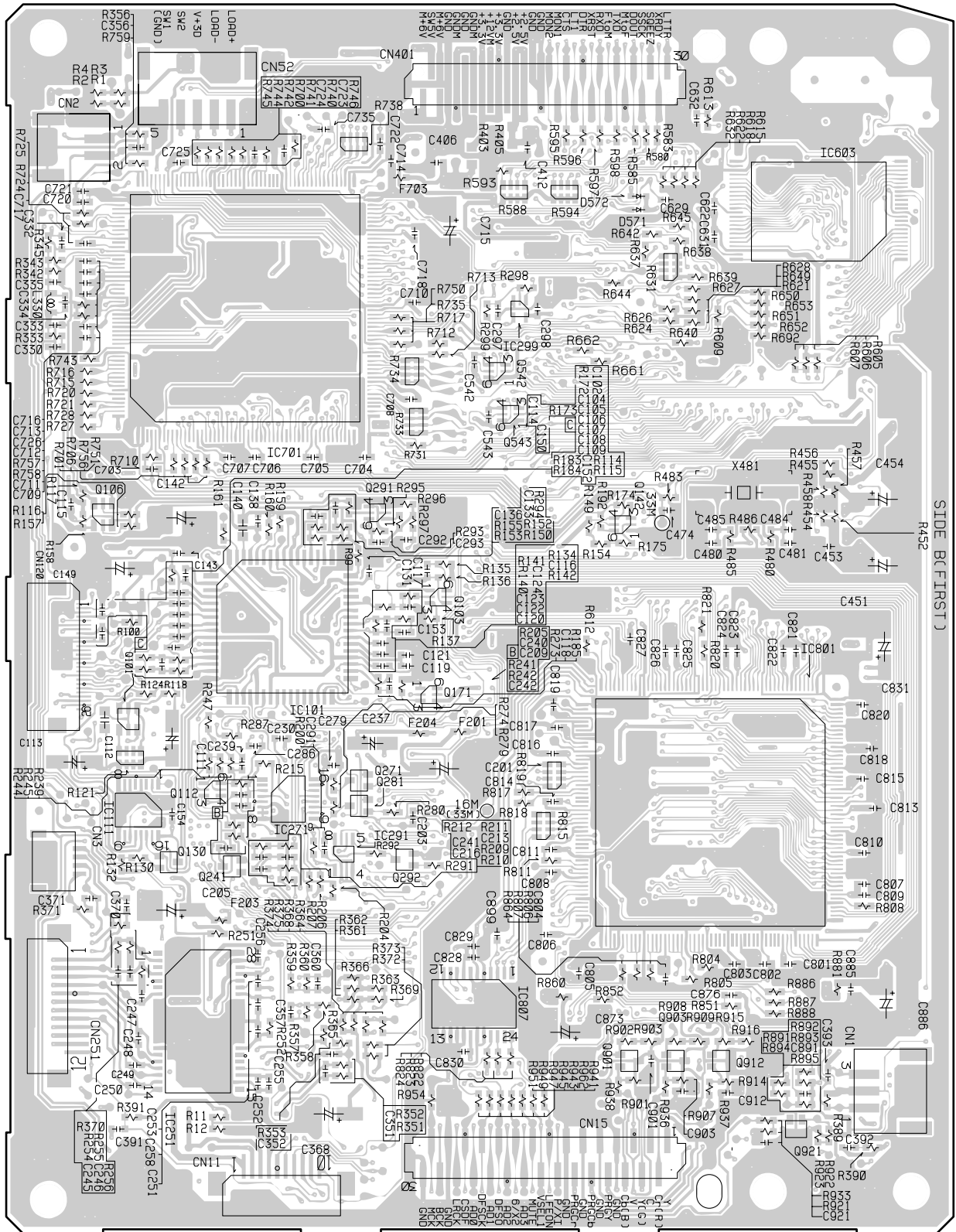
COMPONENTS IDENTIFIED BY MARK \triangle ON THE SCHEMATIC DIAGRAM AND IN THE PARTS LIST ARE CRITICAL FOR RISK OF FIRE AND ELECTRIC SHOCK. REPLACE THESE COMPONENTS WITH ONKYO PARTS WHOSE PART NUMBERS APPEAR AS SHOWN IN THIS MANUAL.

MAKE LEAKAGE-CURRENT OR RESISTANCE MEASUREMENTS TO DETERMINE THAT EXPOSED PARTS ARE ACCEPTABLY INSULATED FROM THE SUPPLY CIRCUIT BEFORE RETURNING THE APPLIANCE TO THE CUSTOMER.

ONKYO®
IMAGINATIVE SIGHT & SOUND

PRINTED CIRCUIT BOARD VIEWS

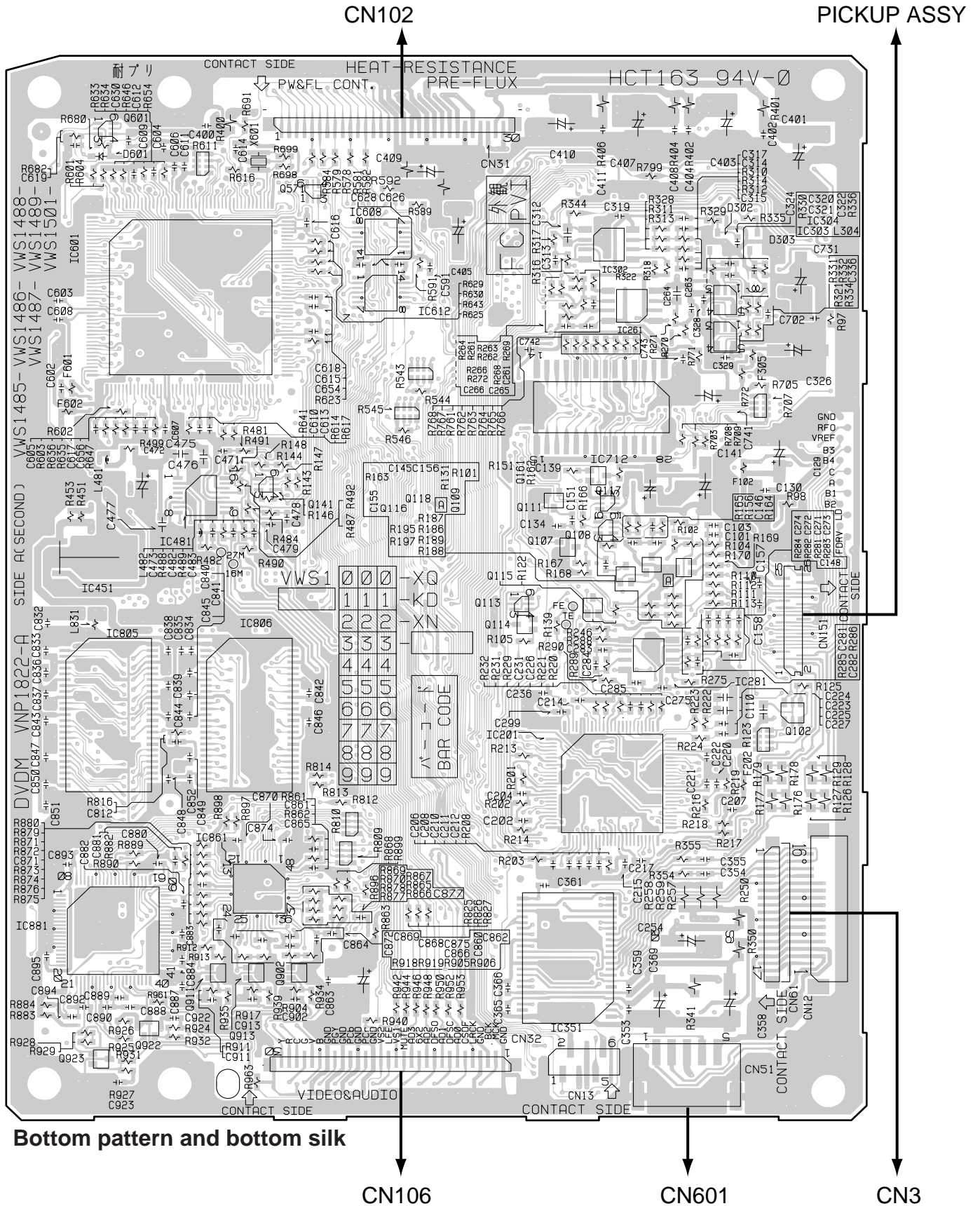
Z1:Main circuit PC board (DB-VPB301)



Top pattern and top silk

PRINTED CIRCUIT BOARD VIEWS

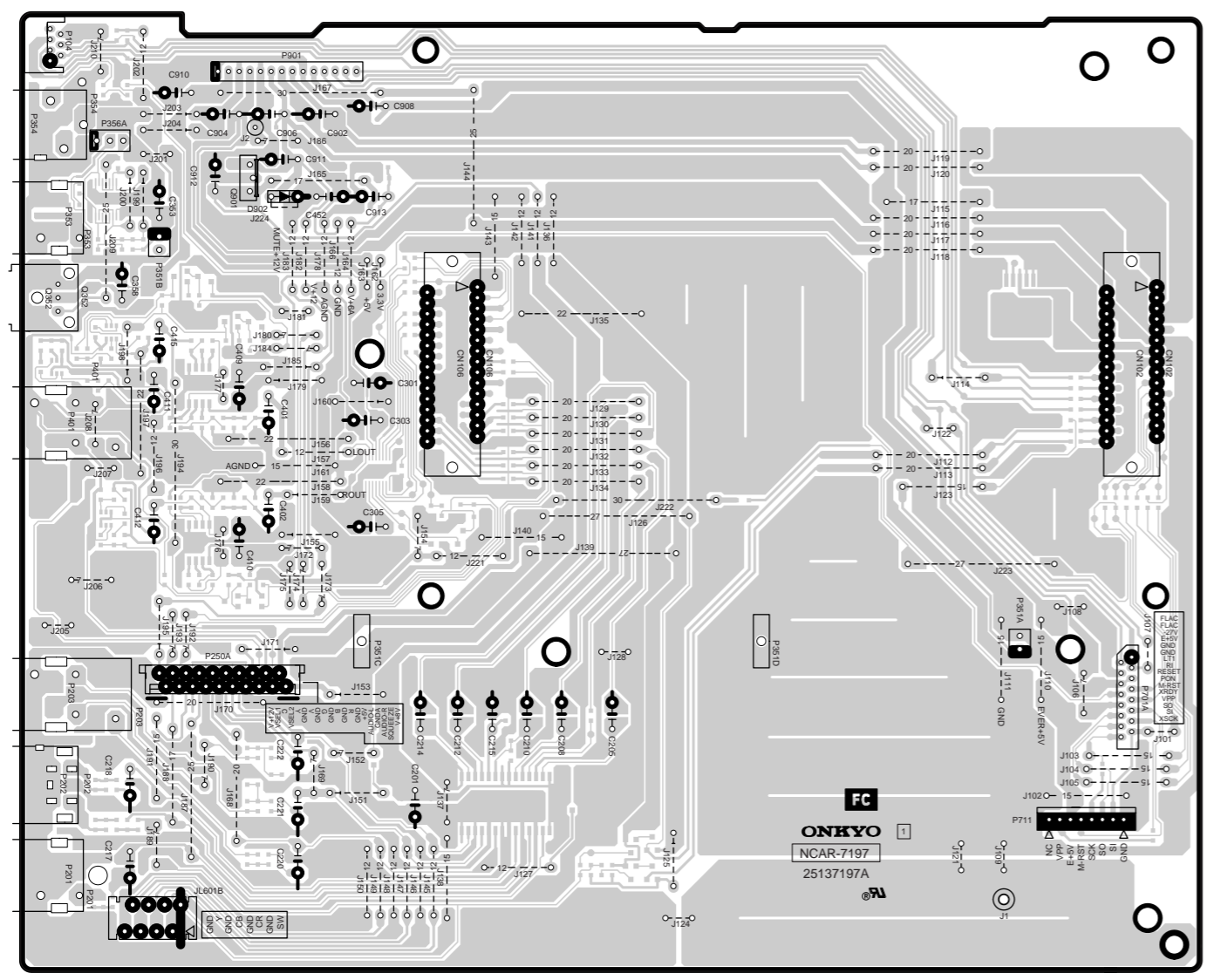
Z1:Main circuit PC board (DB-VPB301)



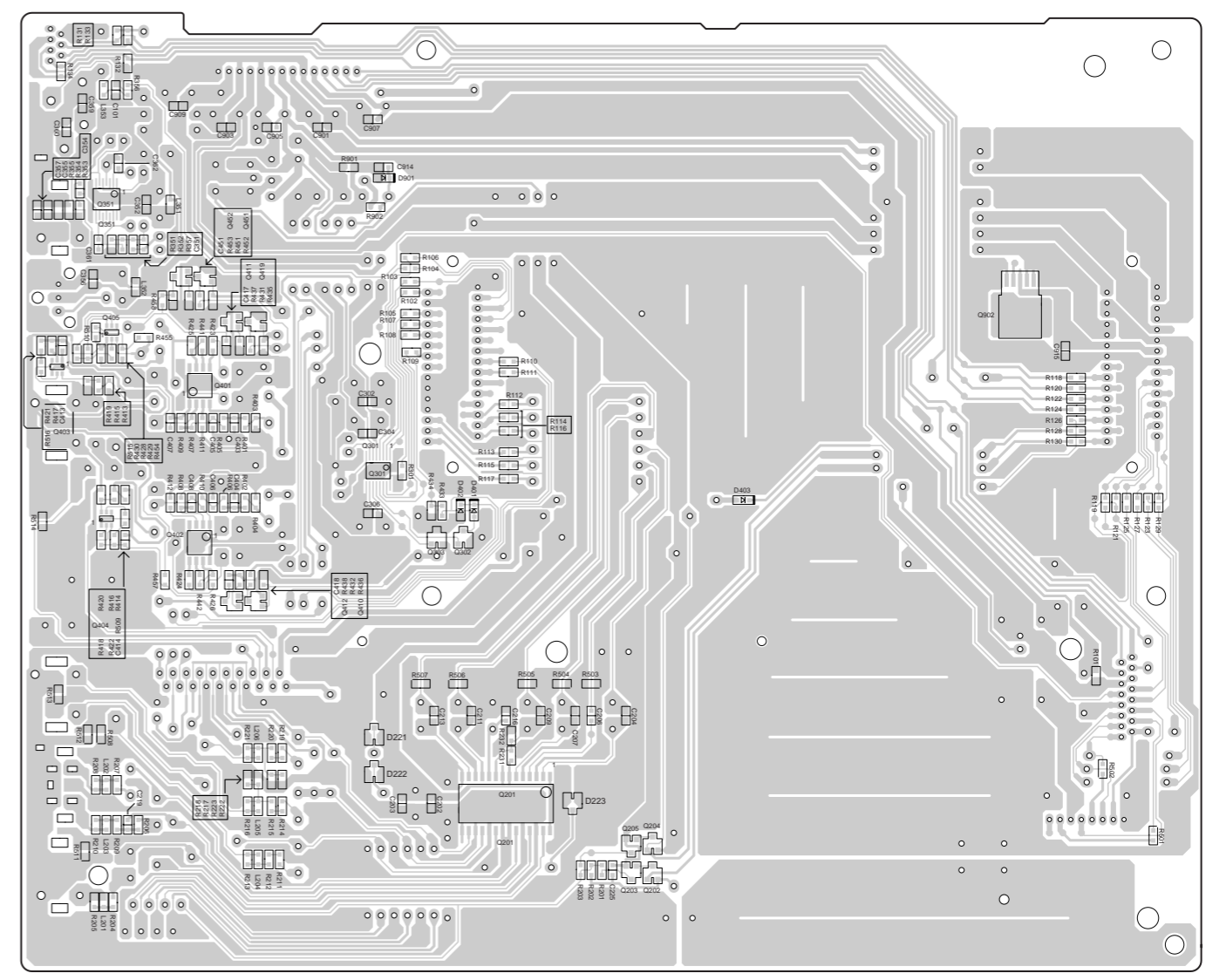
Bottom pattern and bottom silk

PRINTED CIRCUIT BOARD VIEWS -2
(NAAR-7197)

1
2
3
4
5

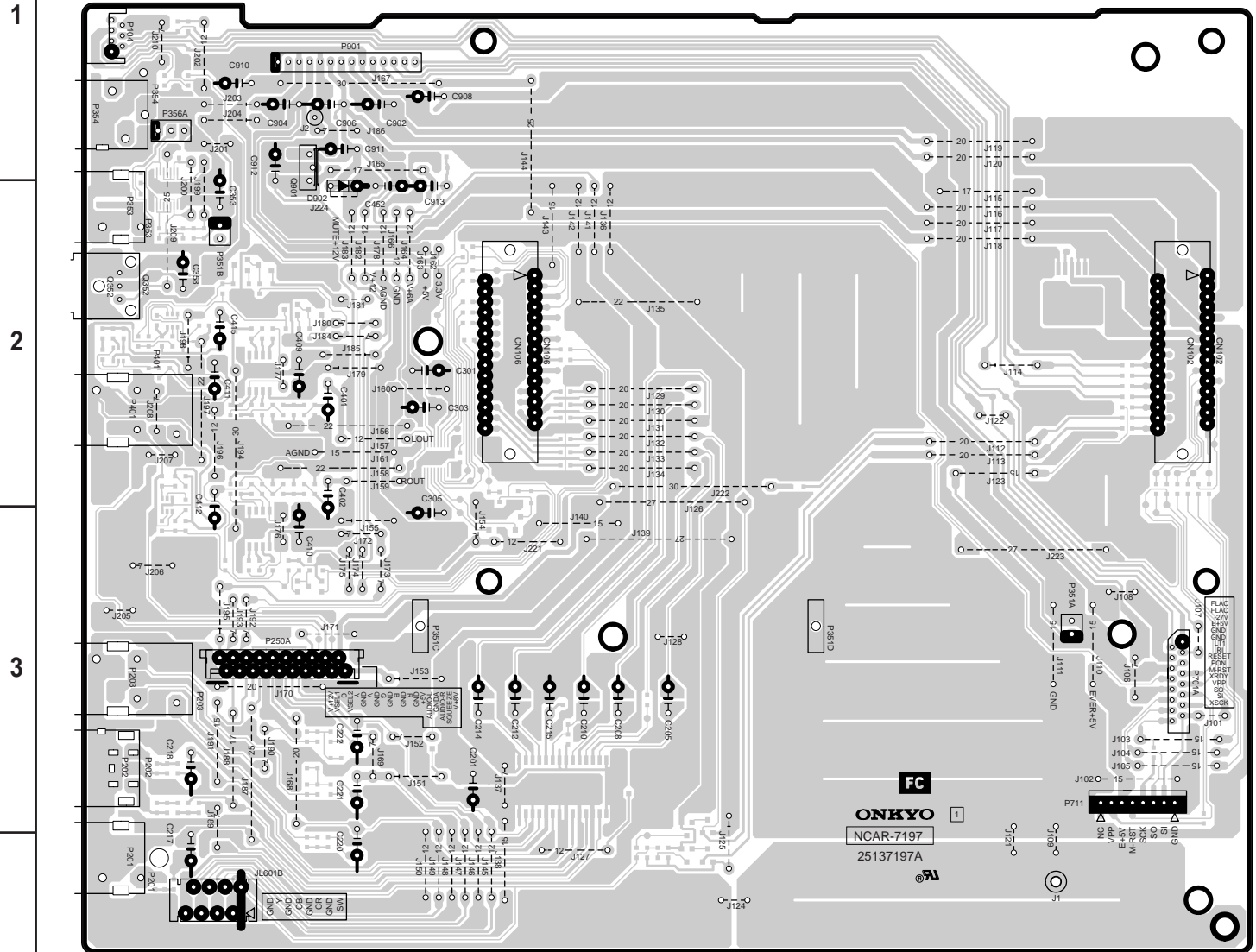


Component side view



Soldering side view

A B C D
PRINTED CIRCUIT BOARD VIEWS -2
(NAAR-7197)



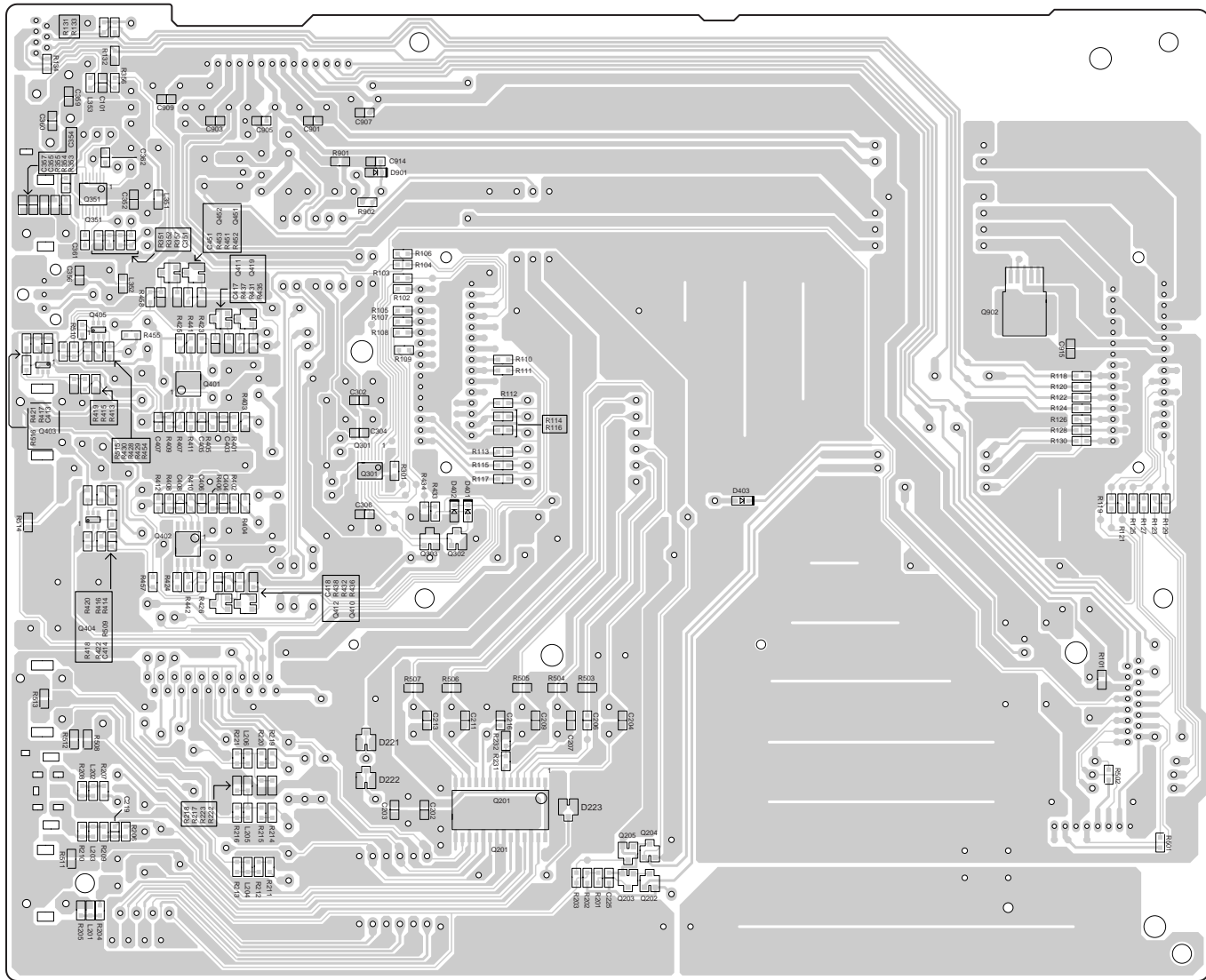
Component side view

1
2
3
4
5

E

F

G



Soldering side view

PRINTED CIRCUIT BOARD VIEWS -2
Display circuit PC board (NADIS-7198)

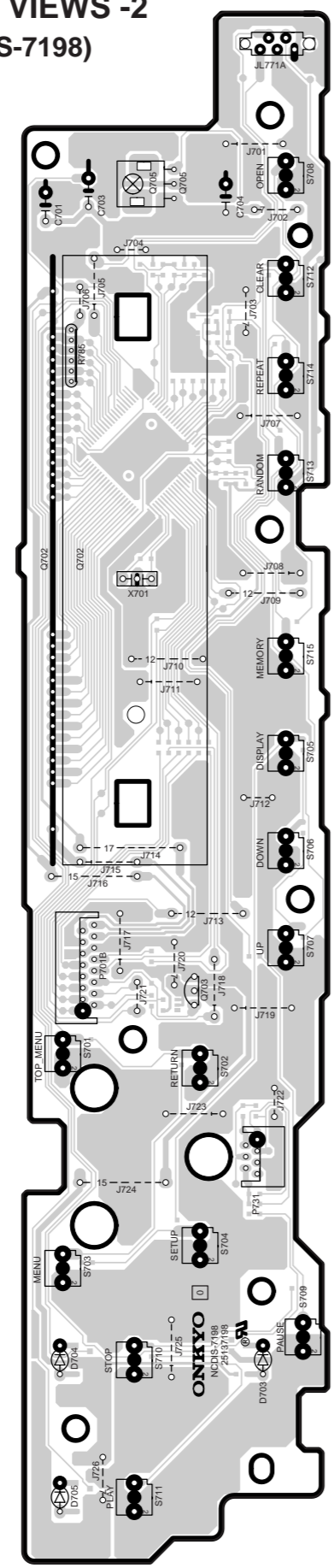
1

2

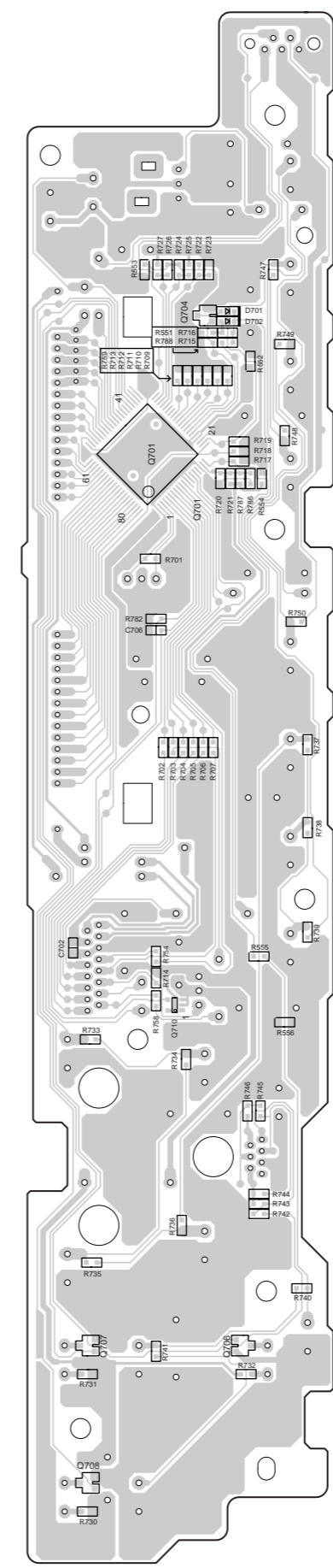
3

4

5



Component side view



Soldering side view

A

B

C

D

PRINTED CIRCUIT BOARD VIEWS -2

Display circuit PC board (NADIS-7198)

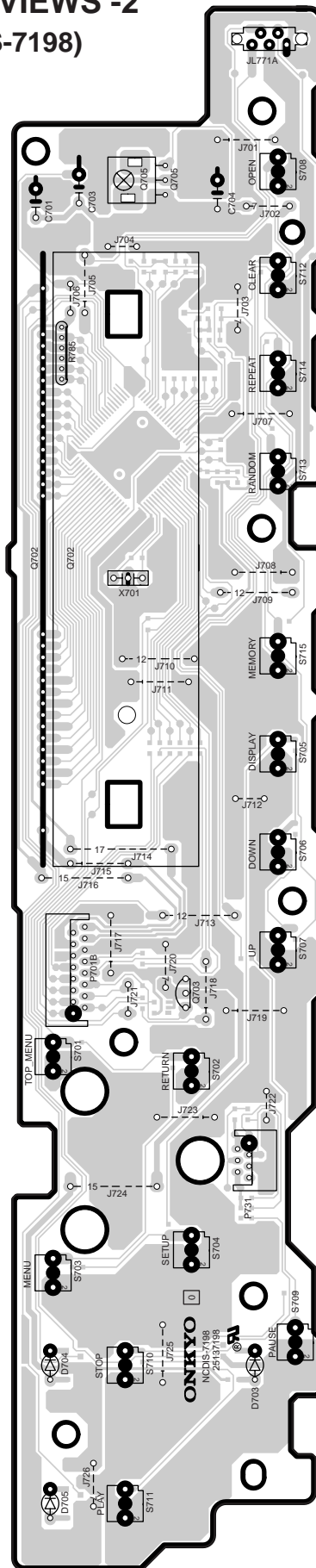
1

2

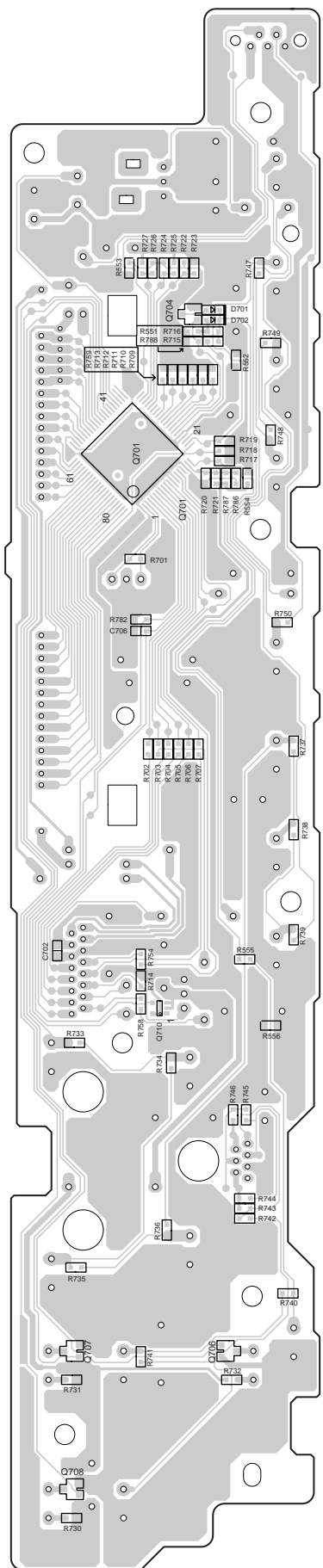
3

4

5



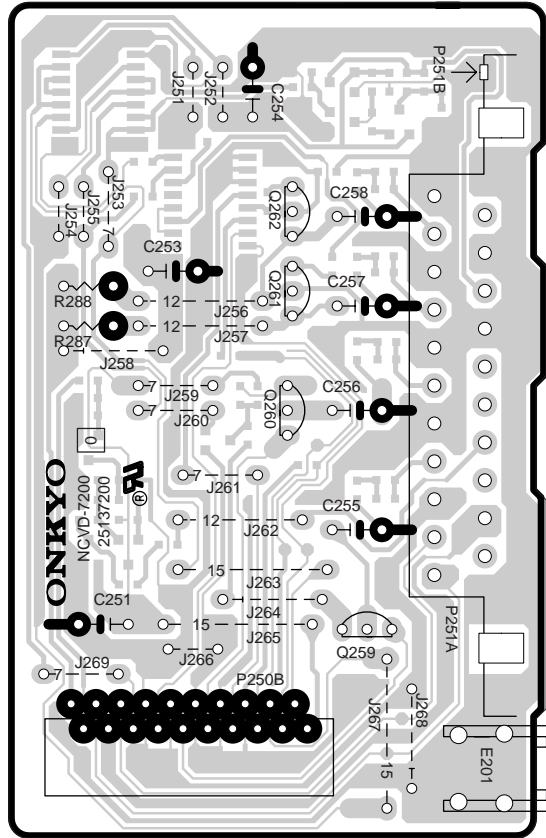
Component side view



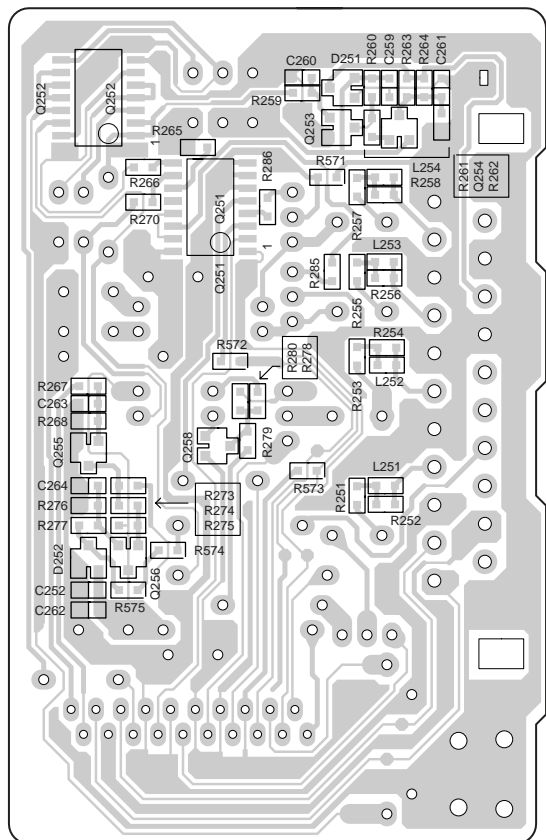
Soldering side view

PRINTED CIRCUIT BOARD VIEWS -4

U4: SCART TERMINAL PC BOARD
 (NAVD-7200)
 <MUP> only



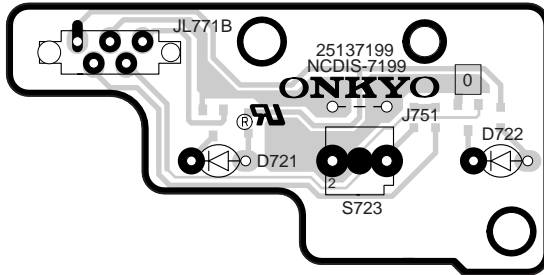
Component side view



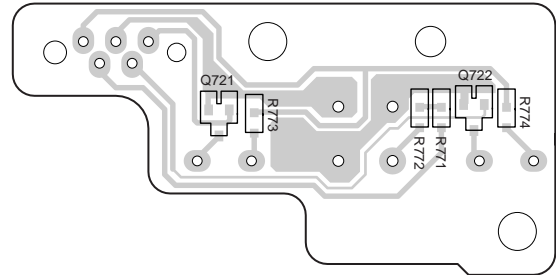
Soldering side view

PRINTED CIRCUIT BOARD VIEWS -3

U3: STANDBY LED PC BOARD (NADIS-7199)

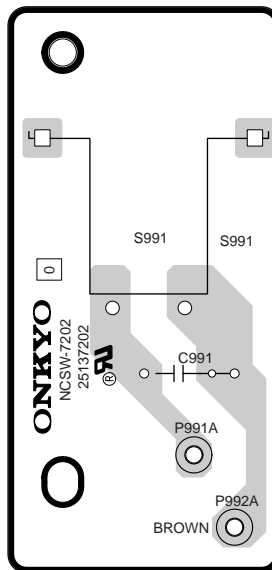


Component side view



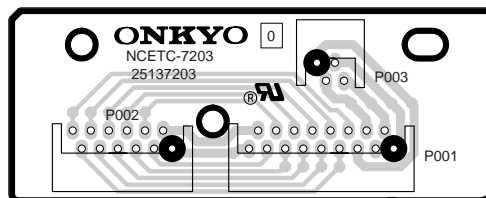
Soldering side view

U6: POWER SWITCH PC BOARD (NASW-7202)



Component side view

U7: CONNECTION PC BOARD (NAETC-7203)



Component side view