

CONFIDENTIAL

**ONKYO**<sup>®</sup>

18 Park Way, Upper Saddle River, NJ 07458

## Technical Tip

**Date:** May 24, 2006

---

**Model:** DTR-4.6/5.6/6.6/7.6

**Subject:** Remote and Wired remote does not respond well to input commands

**Symptom:** When using remote or an external IR controller connected to the rear panel IR input the set may not respond properly to IR commands.

**Solution:** Install the IR Shield PC Board as described. Cover the IR Remote Sensor.

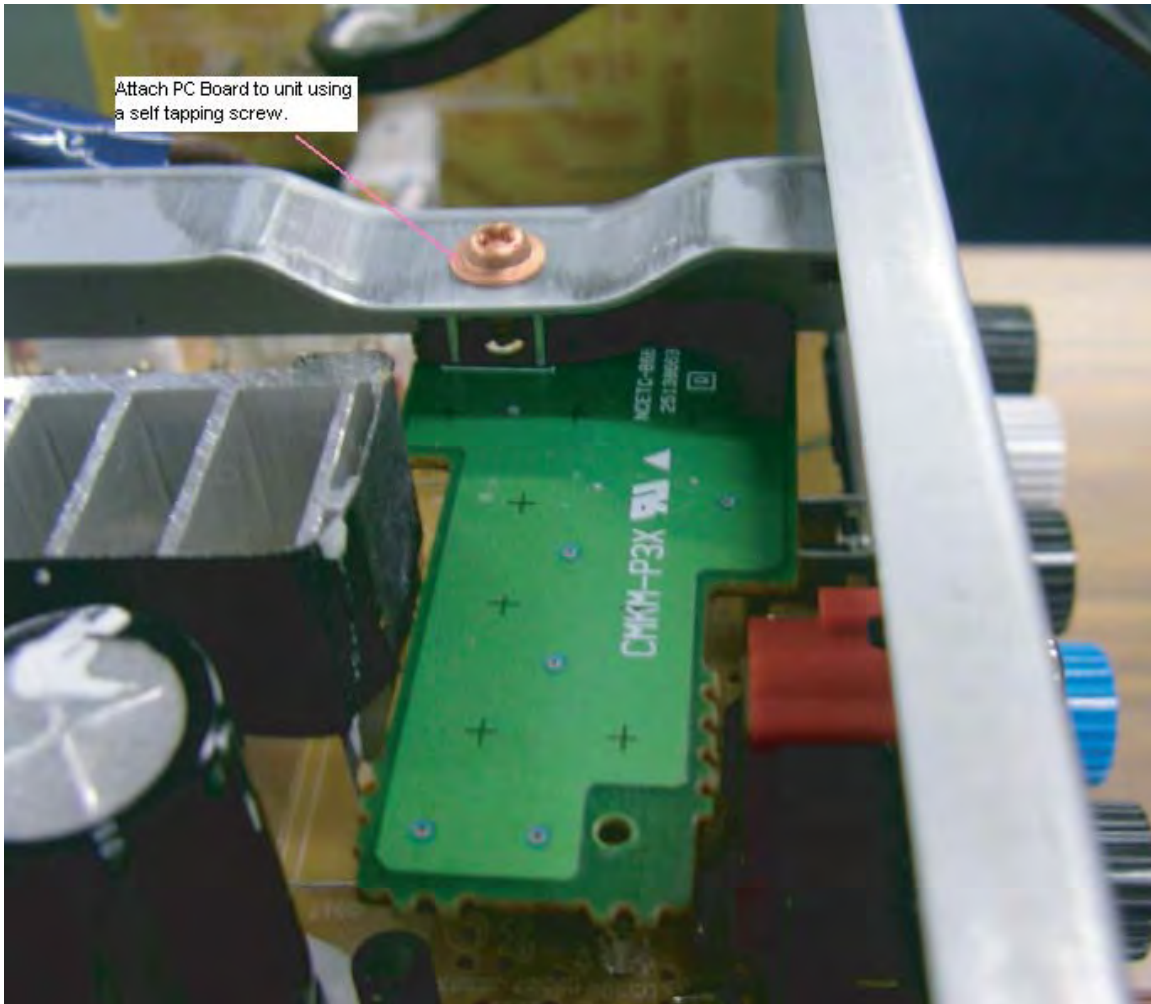


- 1.) Solder the Terminal Connector to the PC board.
- 2.) Attach the PCB you assembled to the set using a self tapping screw.

---

### CONFIDENTIALITY NOTICE:

This document and the information it contains is intended for the exclusive use of Authorized ONKYO Service Centers and their employees. This document may contain information that is privileged, confidential and exempt from disclosure under applicable law and terms of the ONKYO Service Agreement. Any dissemination, distribution or copying of this document and the information it contains is strictly prohibited.



Attach PC Board to unit using a self tapping screw.

**Parts:**

Ref#	Description	Part Number
NA	Solder Terminal	25060312
NA	PC Board NCETC-8663	25138663
NA	Self Tapping Screw	831430088

**CONFIDENTIALITY NOTICE:**

This document and the information it contains is intended for the exclusive use of Authorized ONKYO Service Centers and their employees. This document may contain information that is privileged, confidential and exempt from disclosure under applicable law and terms of the ONKYO Service Agreement. Any dissemination, distribution or copying of this document and the information it contains is strictly prohibited.