

**Assembly / Adjustment Procedure**

Any further updates or electrical faults can be accessed on Kbase within Technical Support(search on CR16)

1\*

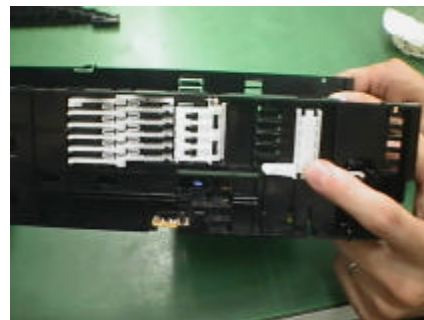


**\* Denotes parts that did not require removal in Disassembly so may already be fitted**

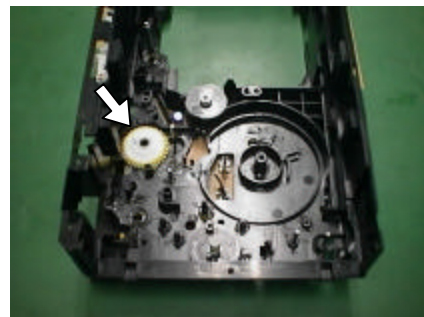
2\*



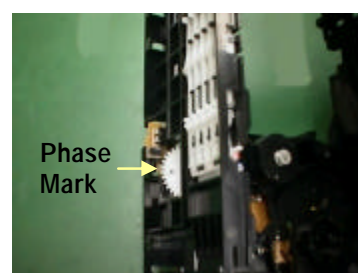
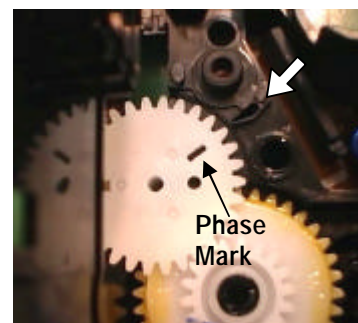
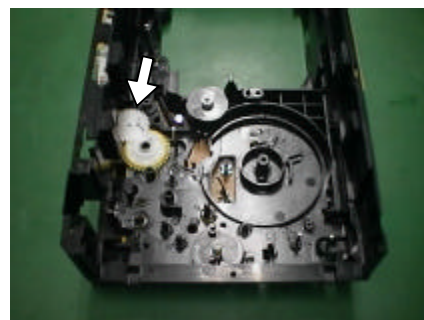
3\*



4\*



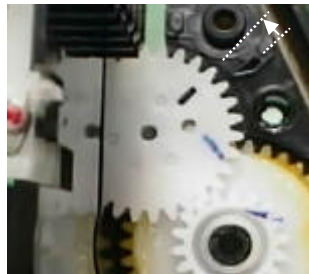
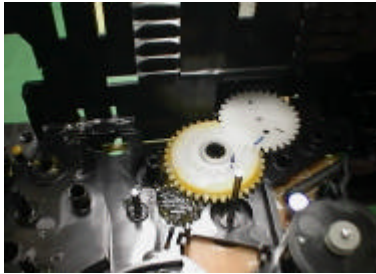
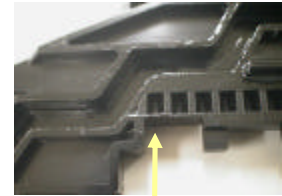
5\*



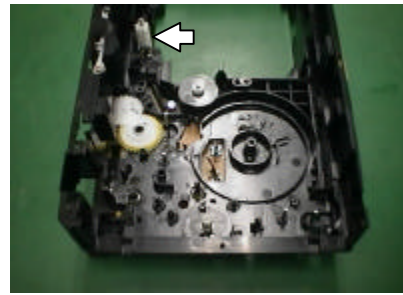
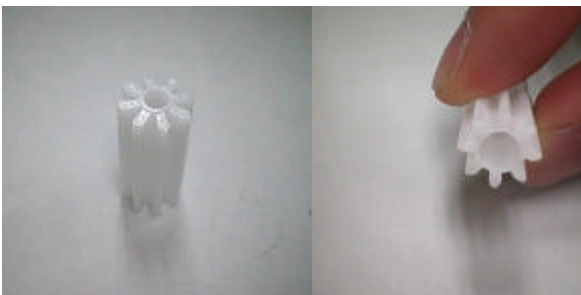
6



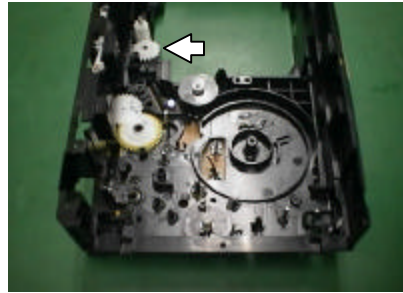
**This part is critical**  
Move side plate forward a fraction when fitting. When it clicks into position, move side plate back again. **Arrowed tooth must locate in first slot of side plate as shown**



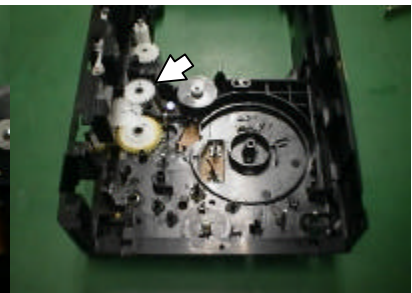
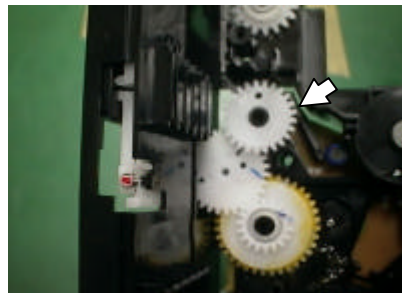
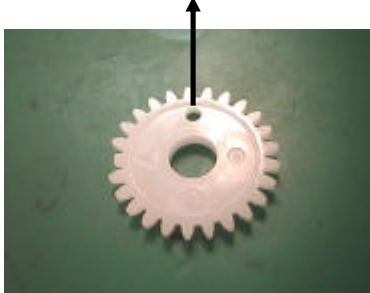
7\*



8\*

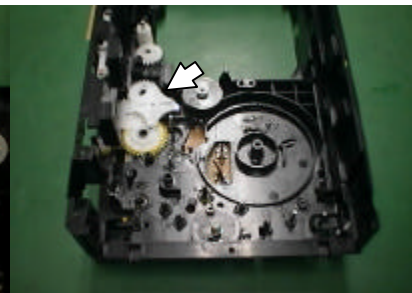
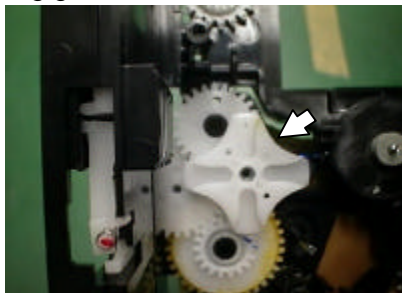


9\*



Hold above gear in position whilst fitting gear below

10





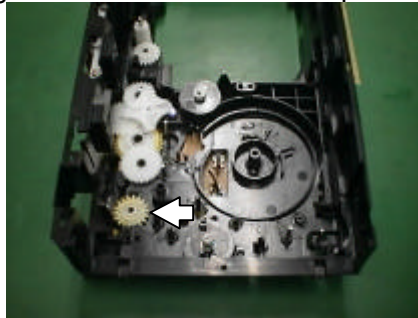
11\*



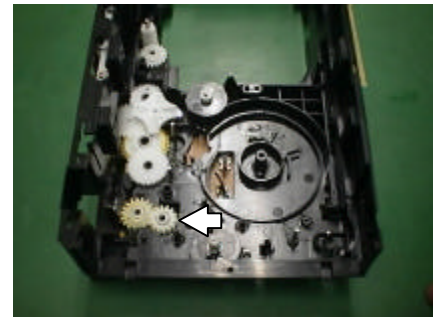
Refit screw if it was originally fitted, part number XTBS26+8J

Be careful not to over-tighten-this gear is not used in mech operation, only used for the jig tool

12\*



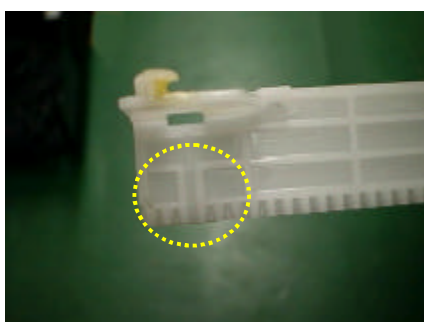
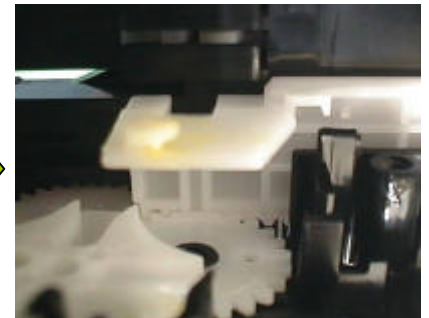
13\*



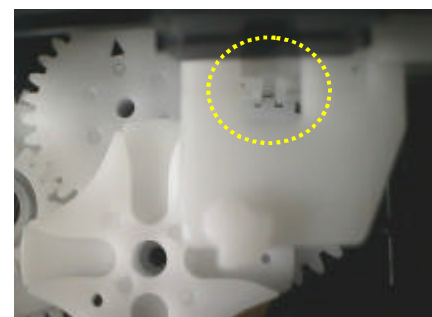
14



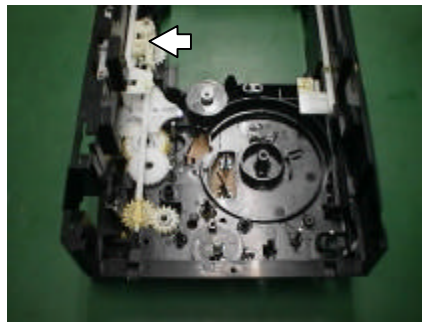
15



Align the long tooth  
on the rack (see left)  
with the half tooth on  
the gear (see right)

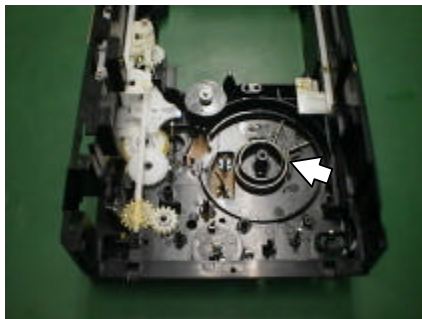


16

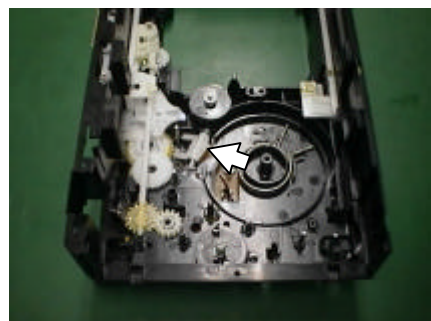


Fit then screw in

17

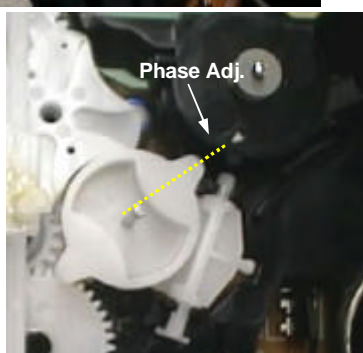
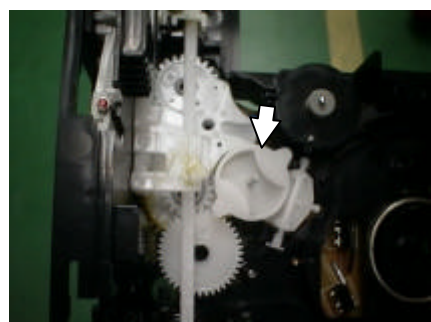
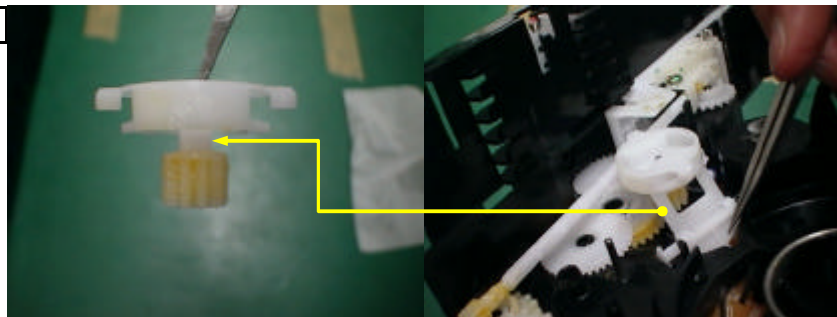


18\*



Insert this way round  
NB Not necessary to  
remove this "lifter"  
gear in disassembly

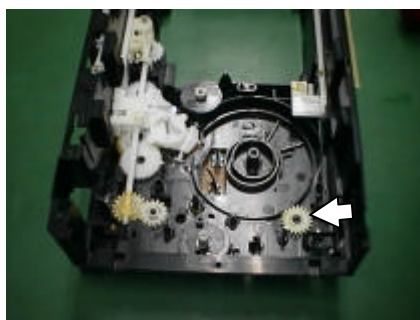
19



Phase Adj.

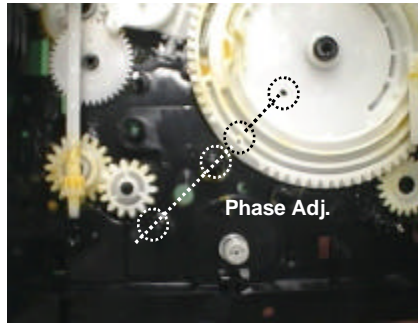
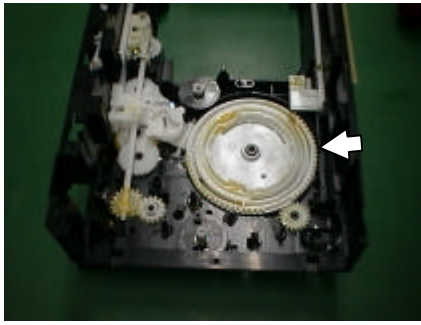
With the left side  
plate far back,  
this gear should turn  
anticlockwise  
but only slightly clockwise

20\*





21

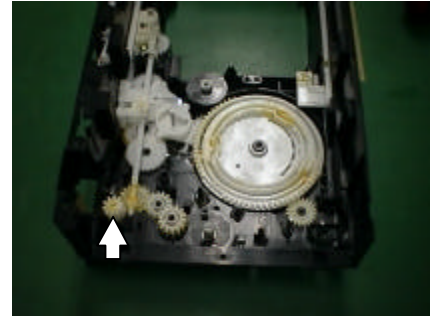


Slot in as shown on far left, then rotate until phase aligned. Large gear will then catch the "pip" of the lifter below the "lemon" gear.

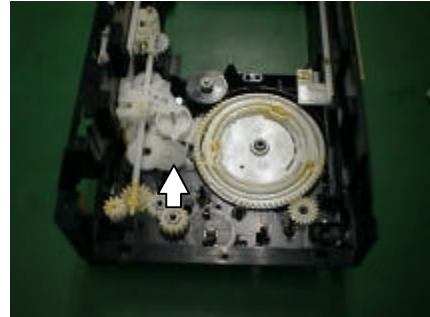
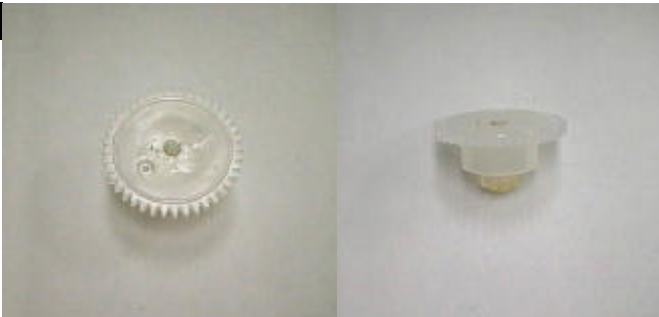
22\*



23\*



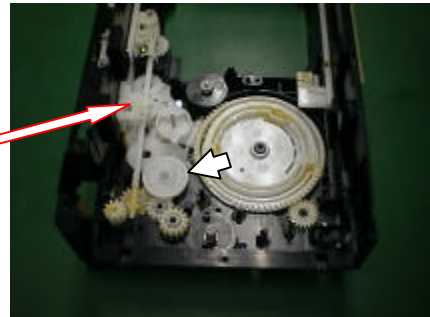
24\*



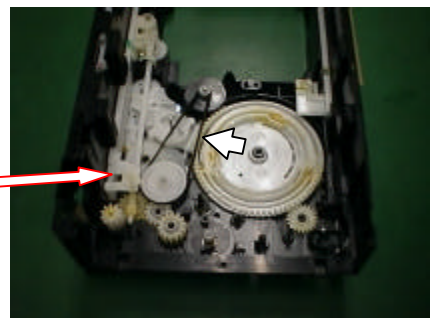
25



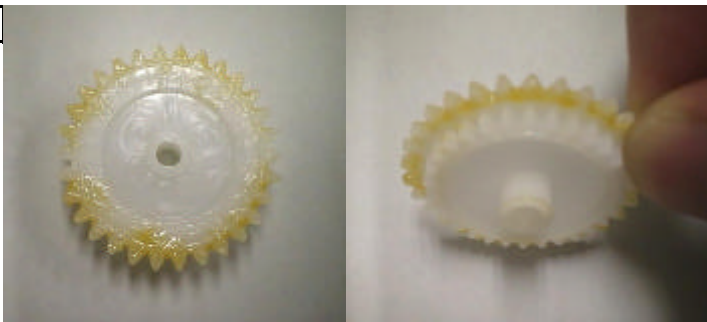
The white rack indicated by the red arrows, is shown in the forward position from 26 onwards. This is due to us changing the point of moving side plate forwards to simplify repair process. This will be rectified once more photos have been taken. This part will naturally move forward when side plate is wound forward in section 34



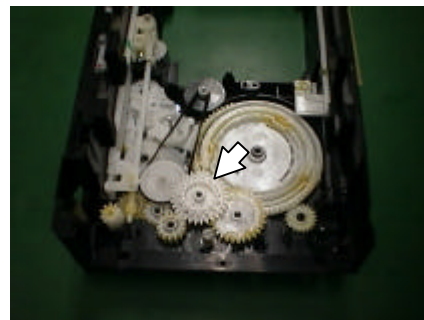
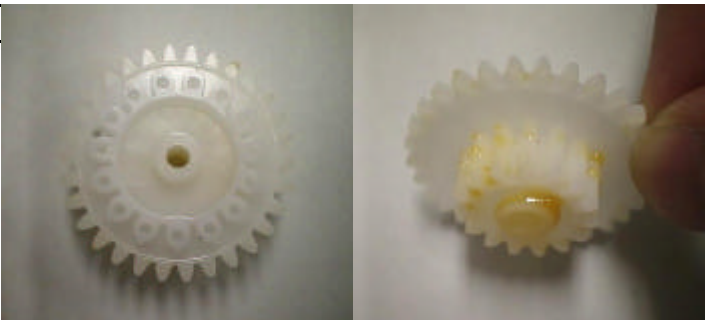
26



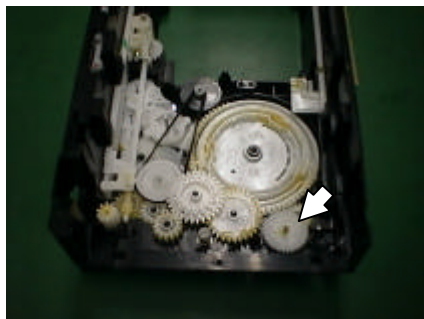
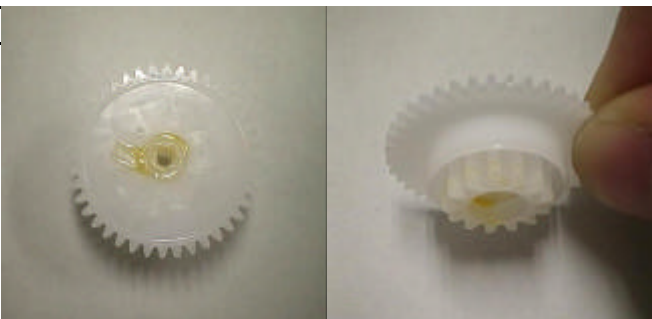
27



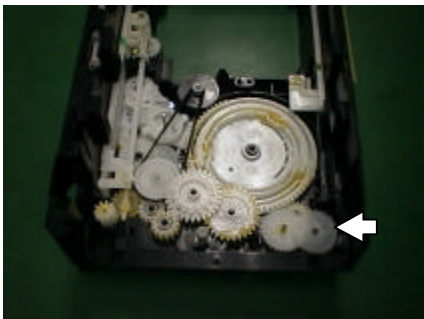
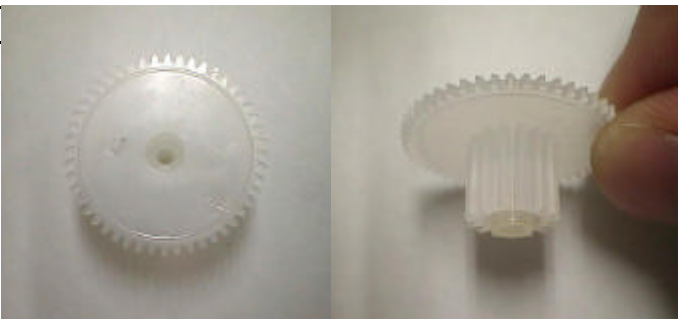
28



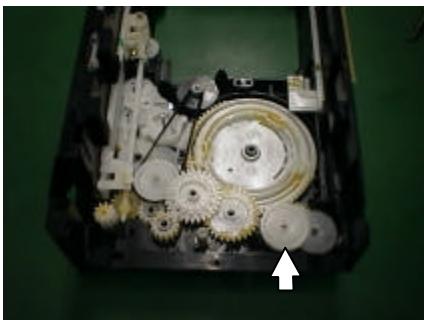
29\*



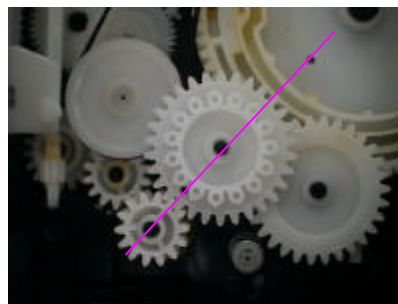
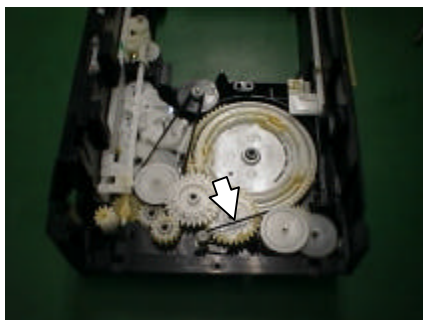
30\*



31\*



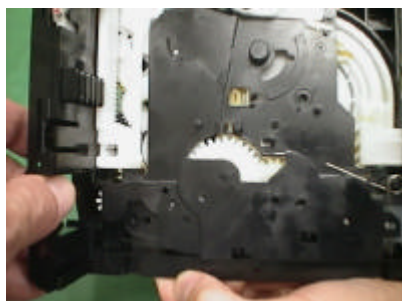
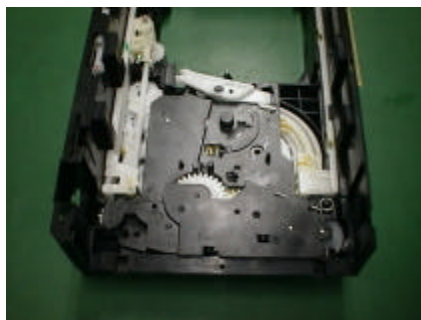
32



Align as shown on left



32

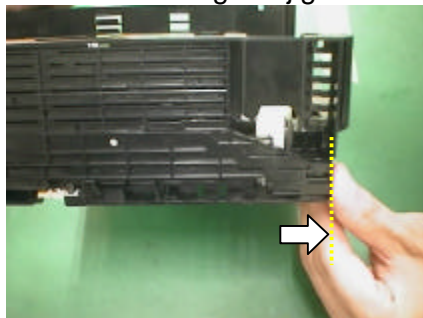
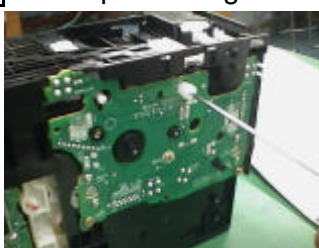


○ Screw

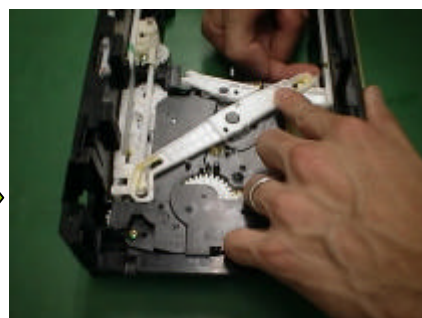
□ Hook

33

At this point bring the side plate forward using the jig tool until level with front of chassis

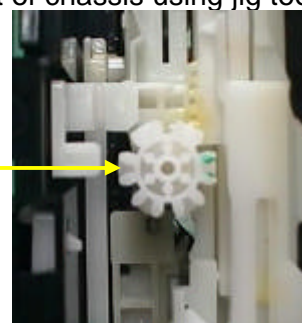
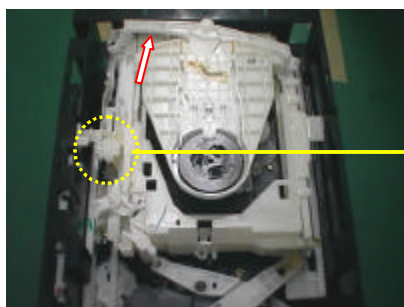


34



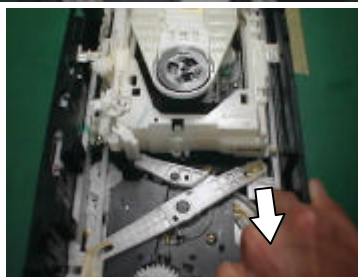
35

Traverse in down position-lever at rear should be as far back as possible on left side. (See red arrow) Traverse should slot in left side first-may find it easier to use jig tool to move side plate forward further (33). Slow down as reaching end of travel as complete re-alignment required if it clicks out of position! After slotting in traverse, side plate should be moved back level to front of chassis using jig tool



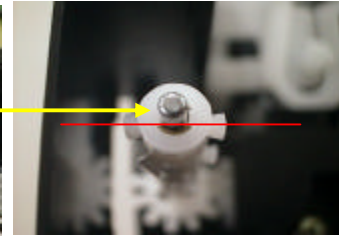
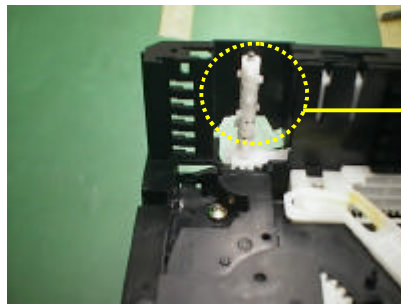
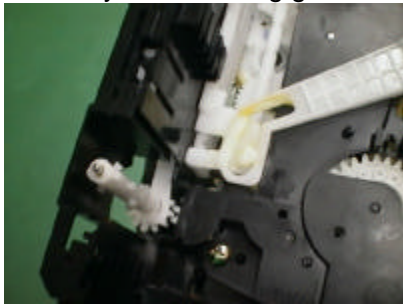
\*Marking to the right\*  
Important that this gear does NOT engage with drive rack just above.

Pull white rack slightly as shown on left until it clicks into position.



Insert tray drive loading gear in to position and then insert metal shaft down the centre

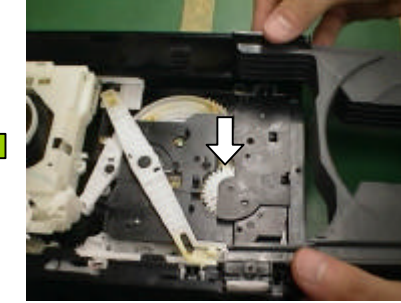
37



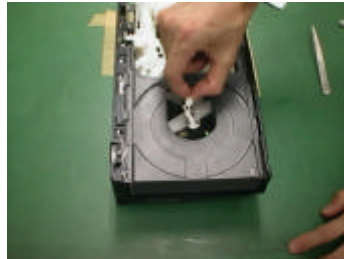
Top lugs on the tray drive loading gear should align horizontally with front of mech and trays should be as far forward as possible before slotting down.

**The white gear in the centre of the black plate should move clockwise slightly when the trays are inserted- if it moves anti-clockwise adjust the tray loading drive gear slightly and re-attempt. Turning tray drive loading gear 180 degrees may help**

38



39



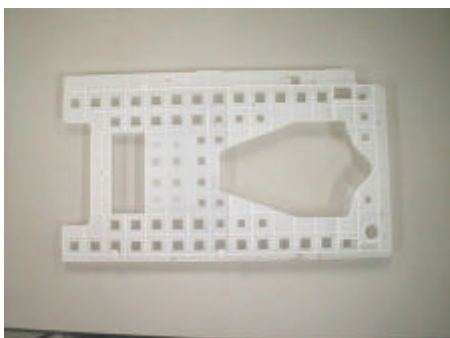
Slide all trays back manually together until front of trays align with front of mech then insert lock lever.



40



41



We recommend fitting top cover before powering up as this provides additional support to the side plate.

You are now ready to operate. Please use additional info on CD Test Mode to check operation.