

Service Manual

Speaker System

Model No.: SC-HT20GW-K

Specification

Output Power(RMS)	:40W+10W*2
Frequency response	:40Hz-20Khz
Impedance	: 8Ohm
Signal to Noise ratio	: >= 80dB
Separation	:>=45dB
Subwoofer driver size	:. 6.5"
Satellite Speaker driver size	: 3.0"
Dimensions (W xH xD)	: Woofer 240 mm x 385 mm x 318mm Satellite 127 mm x448mm x 104mm
Mass	: 10.8kg

Notes :

1. Specifications are subject to change without notice.
Mass and dimensions are approximate.

WARNING.

This service information is designed for experience repair technicians only and is not designed for us by the general public.

It does not contain warnings or cautions to advise non-technical individuals of potential dangers in attempting to service a product.

Products powered by electricity should be serviced or repaired only by experienced professional technicians. Any attempt to service or repair the product or products dealt with in this service information by anyone else could result in serious injury or death/

CONTENTS

Page

1 Assembling and Disassembling	3
1.1. Disassembly flow chart	3
1.2. Disassembly of Back Panel assembly	4
1.3. Disassembly of Front Panel assembly	4
1.4. Disassembly of Tweeter	5
1.5. Disassembly of Semi-finished middle frame	6
2. Assembly of Speaker unit	8
3. Disassembly of Satellite.....	12
4.Connection of the Speaker Cables.....	13
5 Connection of the Wiring Diagram	14
6 Exploded view.....	15
6.1. Cabinet Parts Location	15
6.2. Packaging.....	16
7 Replacement Parts List	17
8 Trouble Shooting	18

“ATTENTION SERVICER”

Some chassis components may have sharp edges. Be careful when disassembling and servicing.

1. This section describes procedures for checking the operation of the major printed circuit boards and replacing the main components.
2. For reassembly after operation checks or replacement, reverse the respective procedures. Special reassembly procedures are described only when required.
3. Select items from the following index when checks or replacement are required.
4. Refer to the Parts No. on the page of “Parts Location and Replacement Parts List” (Section 5), if necessary.

Caution:

Original screws should be used.

Below is the list of disassembly sections

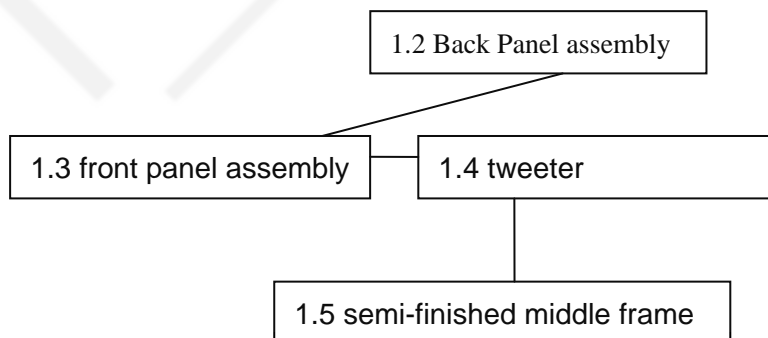
- Disassembly of Back Panel assembly
- Disassembly of front panel assembly
- Disassembly of Tweeter
- Disassembly of semi-finished middle frame
- Disassembly of Satellite

Assembling and Disassembling

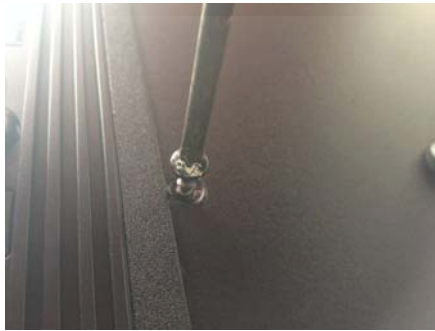
1. Disassembling

1.1. Disassembly flow chart

The following chart is the procedure for disassembling the casing and inside parts for internal inspection when carrying out the servicing.



1.2 Disassembly of back panel



①

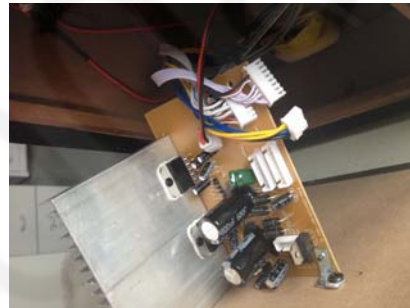
Step 1: Remove 10 screws.



②



①



②

Step 2: take out the back panel from wooden box , then detach 4 cable line away from PCB

1.3 Disassembly of front panel

Follow (step 1) in item 1.2.



①



②



③



④

Step 1: Insert the knife into the grooves of front panel assembly. Push the steel rule foward and backward as shown above from ①-④

Caution:

Do not exert strong force as it may damage the front panel assembly.

1.4 Disassembly of tweeter

Follow (step 1) in item 1.2.

Follow (step 1) in item 1.3.



①



②



③

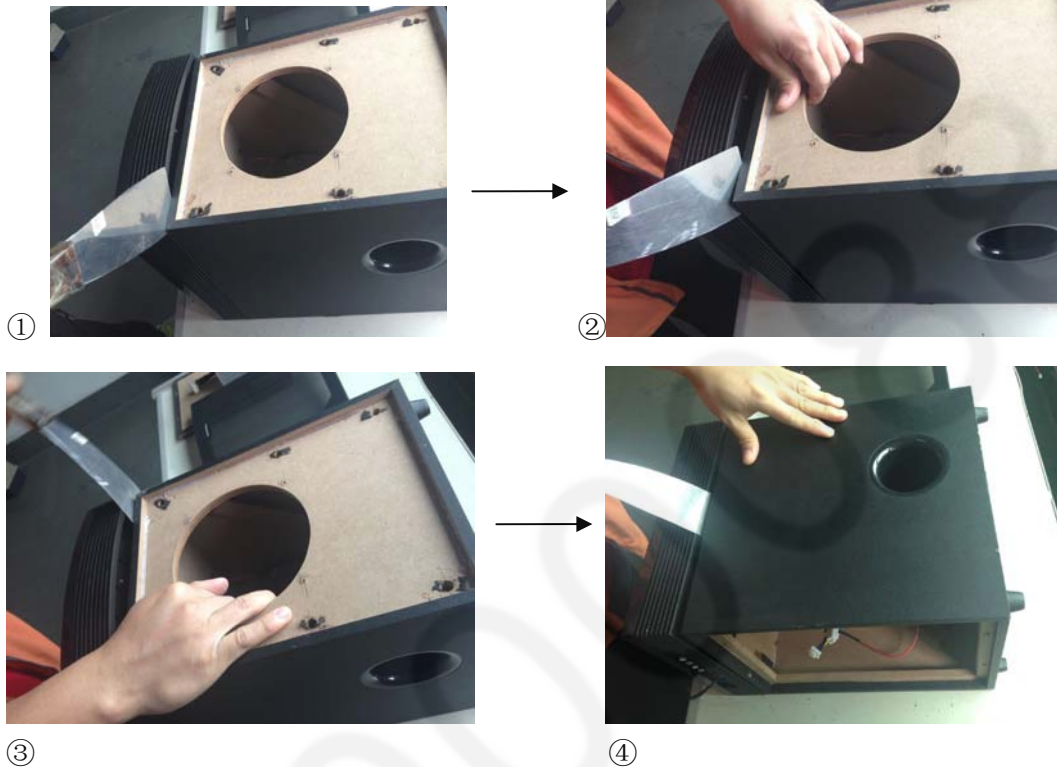
Step 1: Remove 4 screws.

1.5 Disassembly of semi-finished middle frame

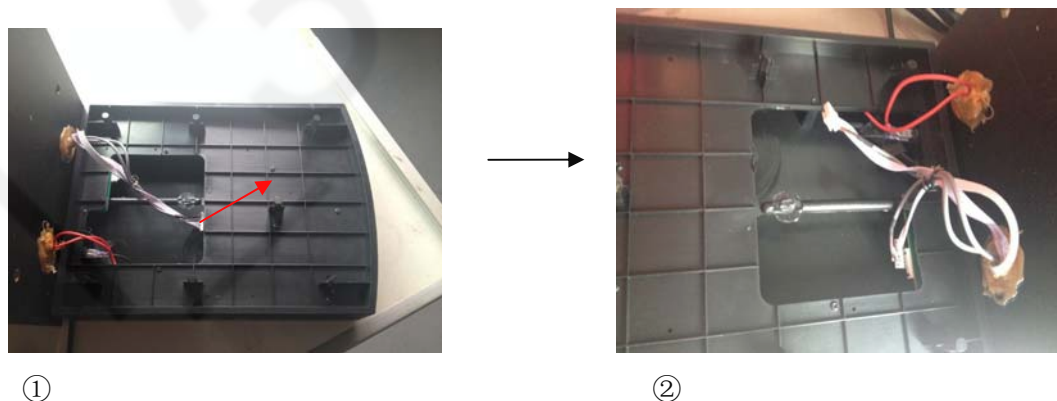
Follow (step 1) in item 1.2.

Follow (step 1) in item 1.3.

Follow (step 1) in item 1.4.



Step 1: Upset the speaker unit as shown above, Insert the knife into the grooves of middle frame assembly. One hand press the speaker box, the other hand push the steel rule forward and backward as shown above from ①-④



Step 2: Detach the 8 pin and 7pin cable away from middle frame as above arrow shown from ①- ②.



①



②

Step 3: Use a sissor to cut the heat-shrinkable tube, Press the key by using a tool with a sharp point as above arrow shown, then pull out the red cable.



②



②

Step 4: Remove screws as above shown



①



②



③

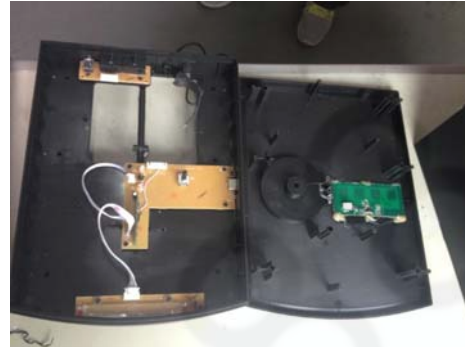


④

Step 5: One hand press and hold the bottom of frame, then another hand, grab the connecting rod outward force to detach the middle frame and top panel. Then the volume knob will come off from top panel automaticlly.



①



②

Step 6: Pull out the cable as above red arrow show

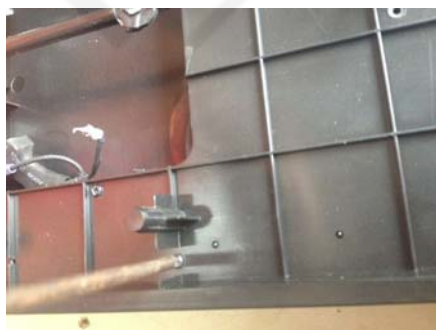


①



②

Step1: Insert the cable into the connector, then close the top panel and middle frame



③



④

Step 2: Fix the screws as above shown.



①



②

Step 2: Install the knob on Top panel.

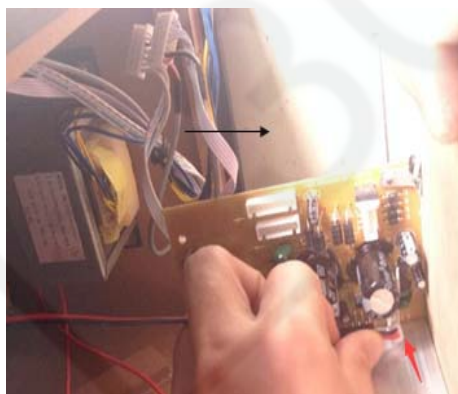


①

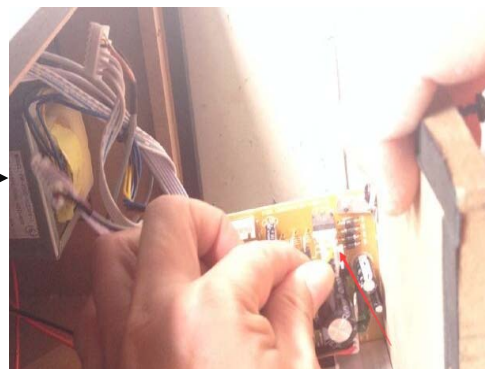
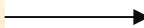


②

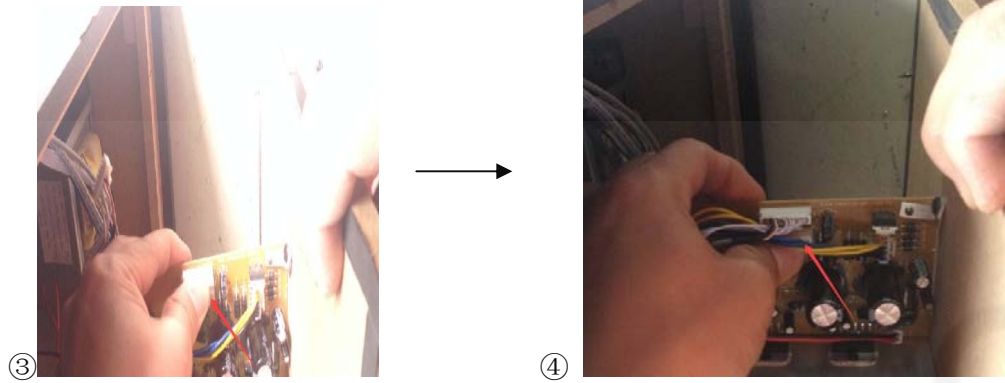
Step 3: Put the speaker on wooden box, then use 4 screws to fix the speaker.



①



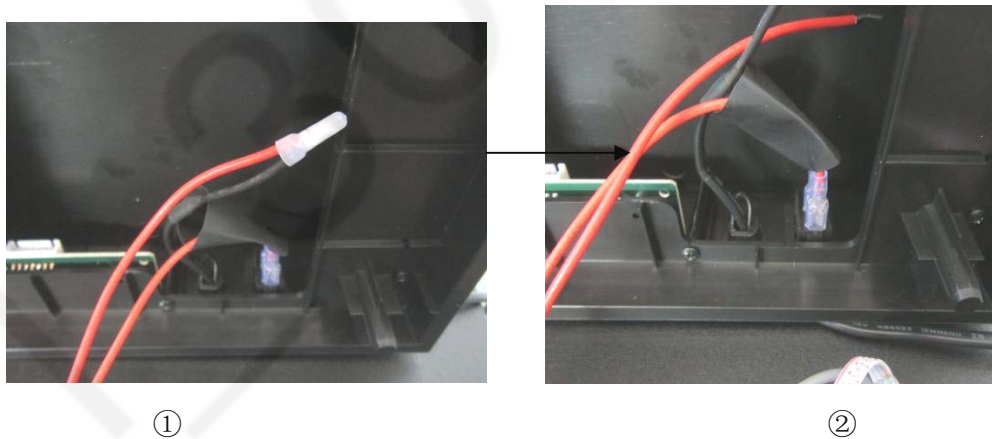
②



Step 4: As above picture ①- ④ shown, Connect 7Pin cable, 8Pin cable, 2Pin cable and transformer primary fuses to Amplifier PCBA

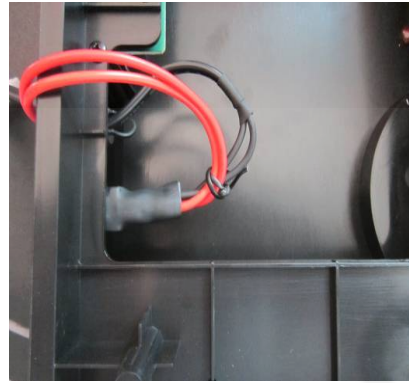


Step 5: As above picture ①-② shown, install the back panel to wooden box, and use screws to fix it.



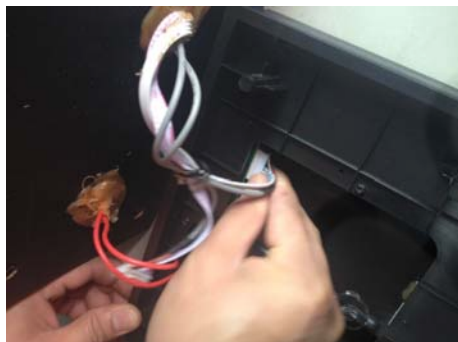


③

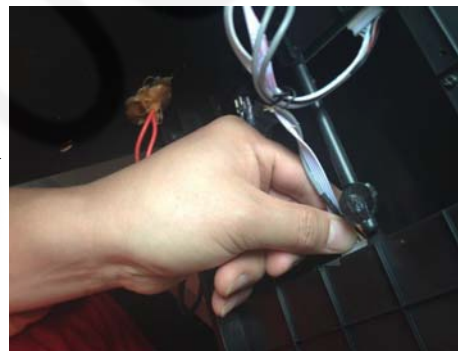


④

Step 6: As above picture ①-④ shown, Twist the main cord and transformer primary fuses together, and fixed via a cable conector, Thread the transformer primary fuses with terminal end of woofer through into the heat-shrinkable tubing, then insert it on power switch; Final heat the heat-shrinkable tube via thermal chimney



①



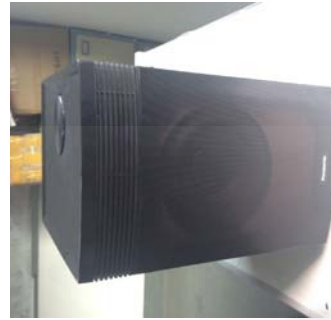
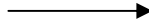
②

Step 7: As above picture ①-② shown, Insert the 7pin cable to control board PCBA, 8Pin cable to Input-Output PCBA



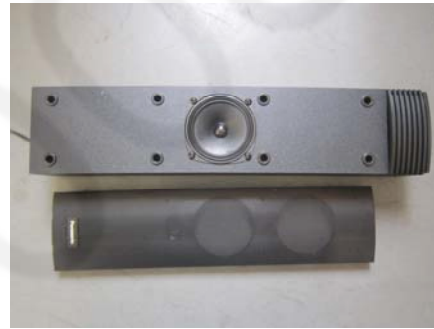
①

Step 8: As shown in the picture, Cover the top panel on wooden box by rubber hammer



Step 9: As shown in the picture, Install metal grill to wooden box.

3 Disassembly of Satellite



Step 1: Insert the knife into the grooves of front panel assembly. Push the steel rule forward and backward same as subwoofer front panel disassembly



Step 2: Remove 4 screws .

4 Connection of the Speaker Cables

- Be sure to connect speaker cables before connecting the AC power supply cord.
- Be sure to connect the cable of speaker to output RCA plug, connect audio cable to input RCA plug, Connect 3.5mm stereo cable to AUX plug.
- Twist and pull off the vinyl tip of the speaker cords. If the speaker cords do not have vinyl tips, connect them directly to the terminals. Make sure the bare ends of the wires are not unravelled.

Placement

- **Place this unit on a even surface.**
- **To reduce the risk of fire, electric shock or product damage.**
 - **Do not intall or place this unit in a bookcase, built-in cabinet or in another confined space. Ensure this unit is well ventilated.**
 - **Do not obstruct this unit's ventilation openings with newspapers, tablecloths, curtains, and similar items.**
 - **Do not expose this unit to direct sunlight, high temperatures, high humidity and excessive vibration**

Notes

- You can damage your speakers and shorten their useful life
- if you play sound at high levels over extended periods.
- Reduce the volume in the following cases to avoid damage.
- When playing distorted sound.
- When the speakers emit strange noise (howling) from a microphone or record player, noise from FM broadcasts, or continuous signals from an oscillator, test disc, or electronic instrument.
- When adjusting the sound quality.
- When turning the unit on or off.

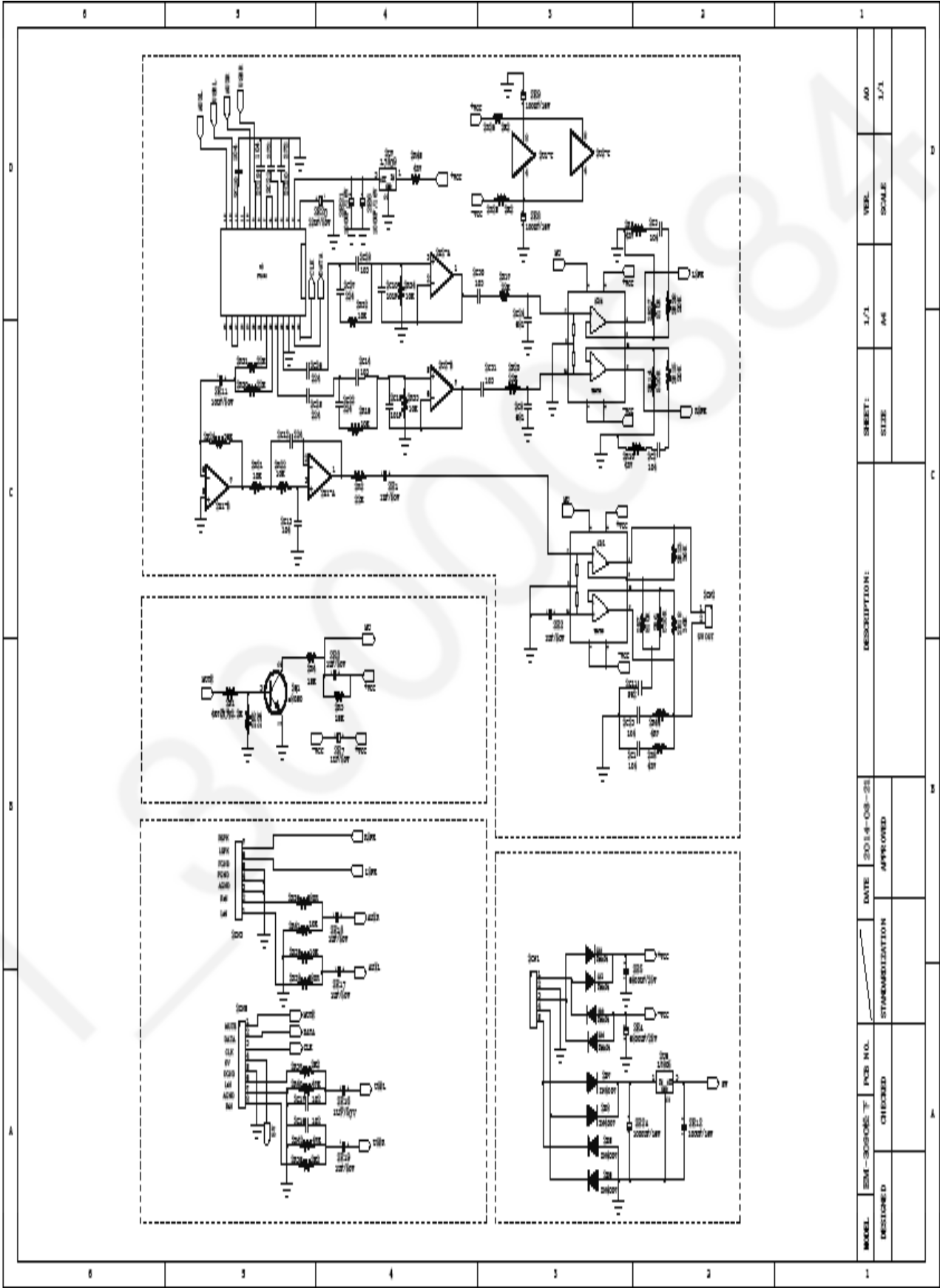
If irregular coloring occurs on your television

These speakers are designed to be used close to a television, but the picture may be affected with some televisions and setup combinations.

If this occurs, turn the television off for about 30 minutes

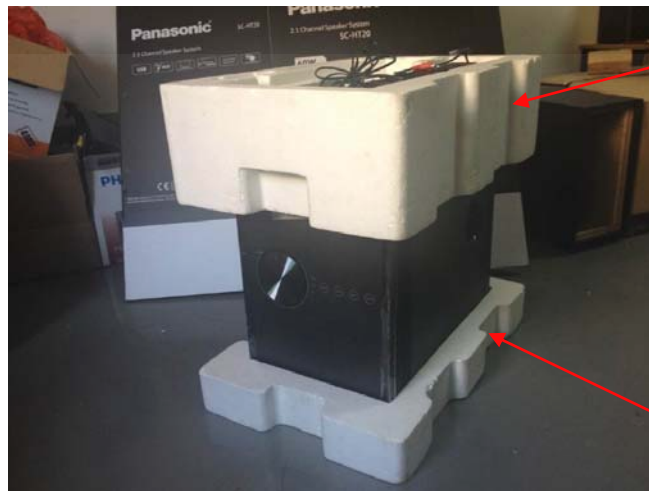
The television's demagnetizing function should correct the problem. If it persists, move the speakers further away from the television.

5. Connection of the Wiring Diagram



15

6.2. Packaging



7. Replacement Parts List

Notes :

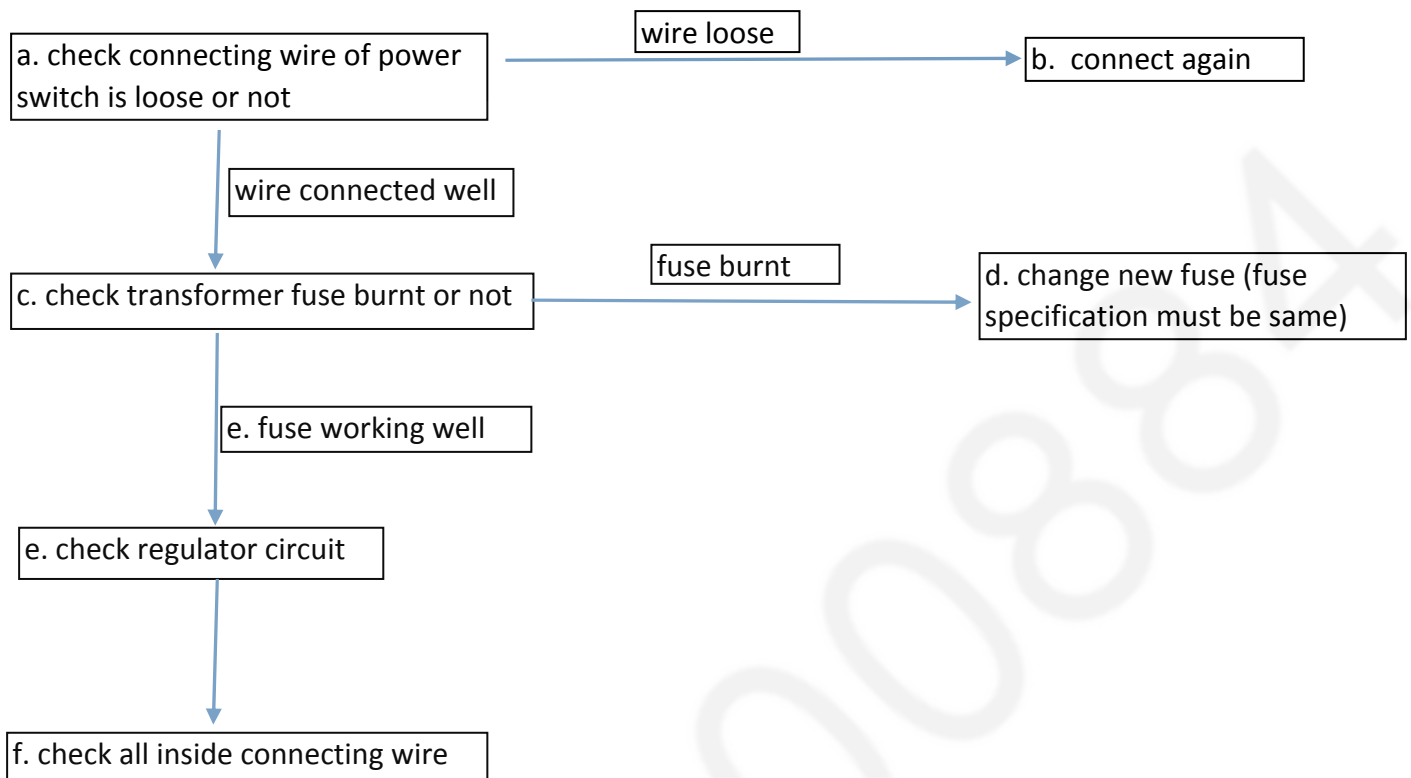
• Important safety notice :

When replacing any of these components, be sure to use only manufacturer's specified parts shown in the parts list.

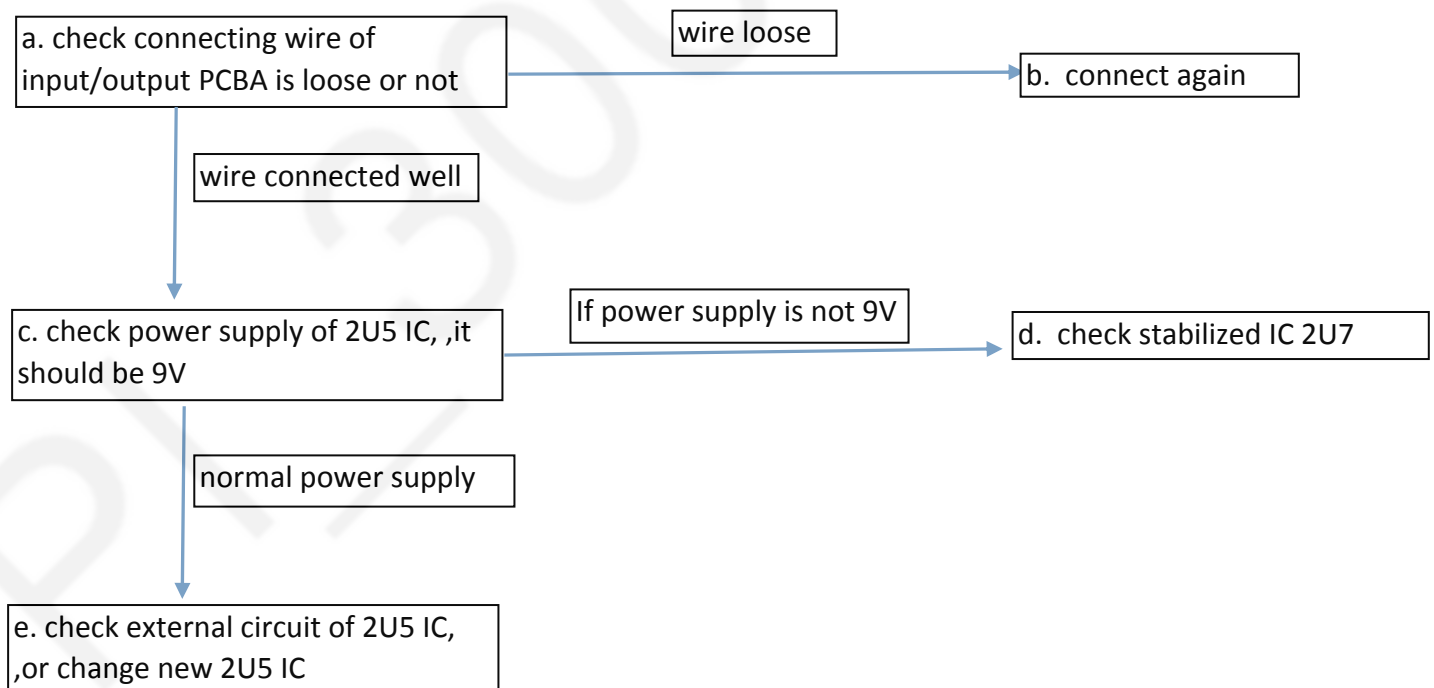
Ref. No.	Part No.	Part Name & Description
1	23-072651-000	IC TDA7265
2	42-764223-01R	变压器 transformer
3	40-805065-02R	低音喇叭 Subwoofer speaker
4	40-801530-21R	全音喇叭 Satellite Speaker
5	71-130900-07R	主机顶盖 Subwoofer top panel
6	47-130901-00R	主机铁网 Subwoofer Metal grill
7	87-309019-05R	遥控器 Remote
8	80-309081-07R	彩盒 Gift box
9	90-309020-00A	功放板 Amplifier PCBA
10	90-309040-000	控制板 CONTROL BOARD PCBA
11	90-309090-000	触摸板 Touchpad PCBA
12	90-309012-000	接收板 LED/IR Receiver PCBA

Trouble Shooting

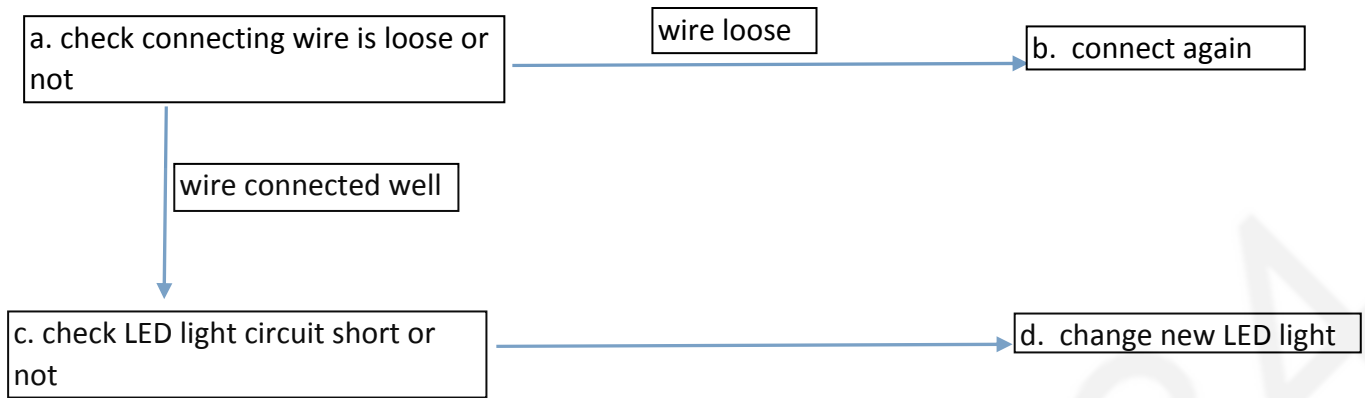
1. No power



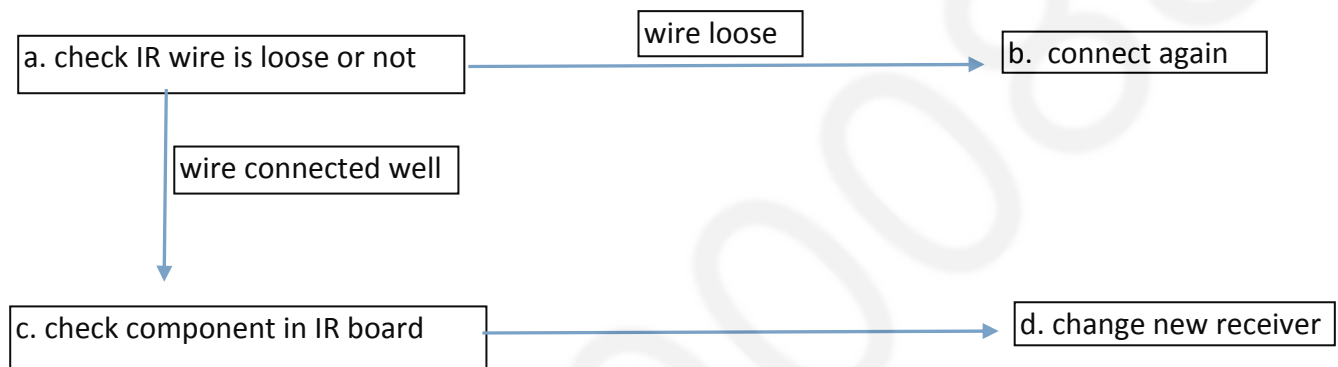
2. No Volume



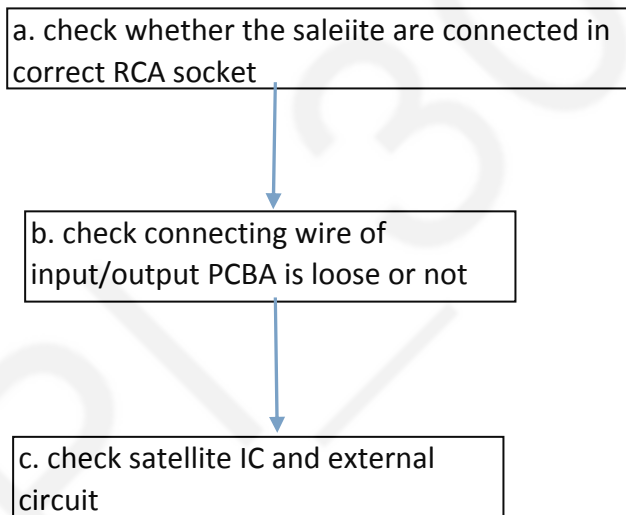
3. LED indicator does not shining



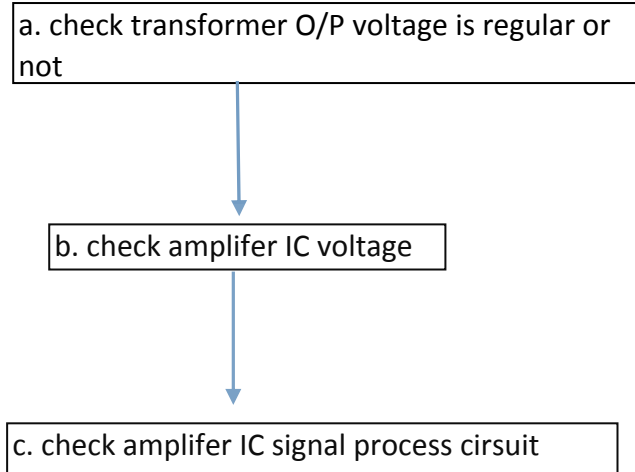
4. Remote not working



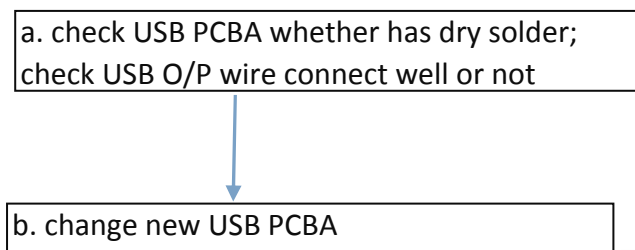
5. No treble or only one channel with treble, crosstalk



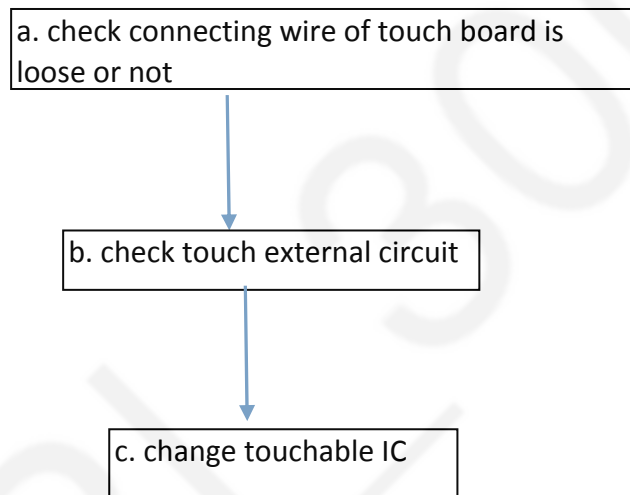
6. Current Noise



7. U disk not working / one channel not working



8.Touch no working



9. No bass

