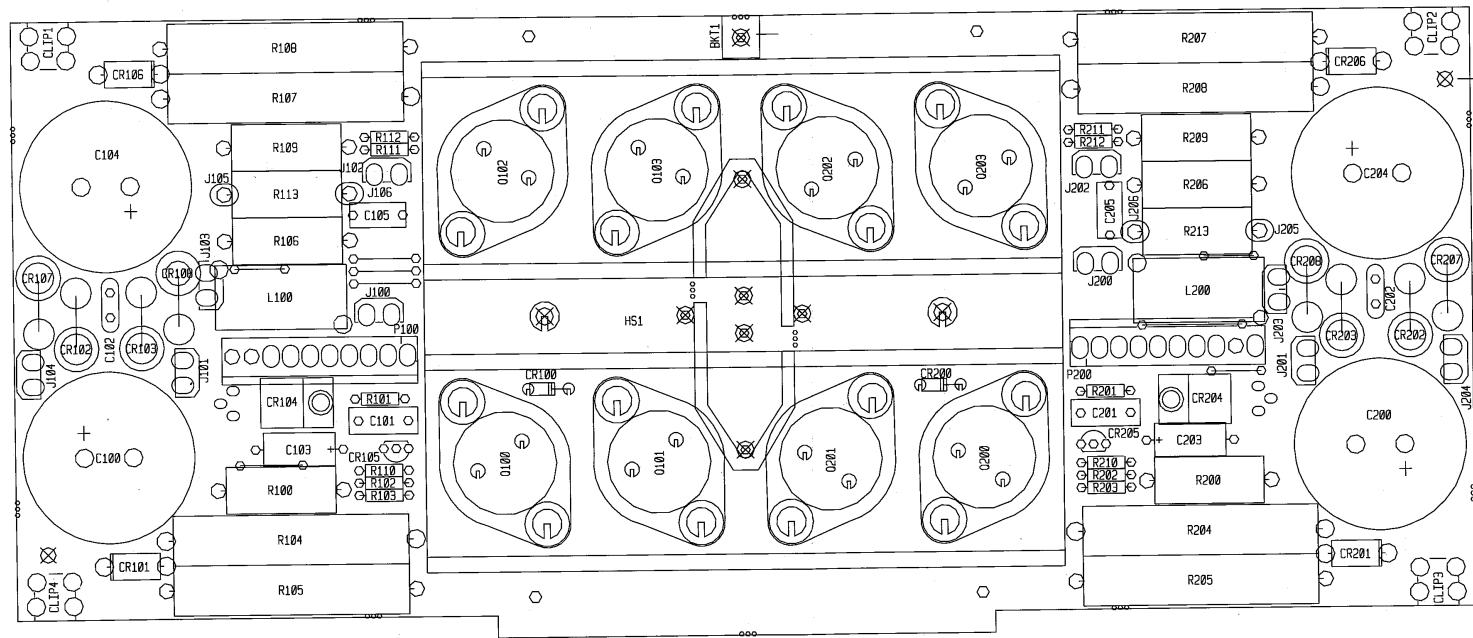


LAST REF USED: C185, CR184, J185, L186, P186, Q181, R113
 LAST REF USED: C285, CR284, J286, L286, P286, Q281, R213

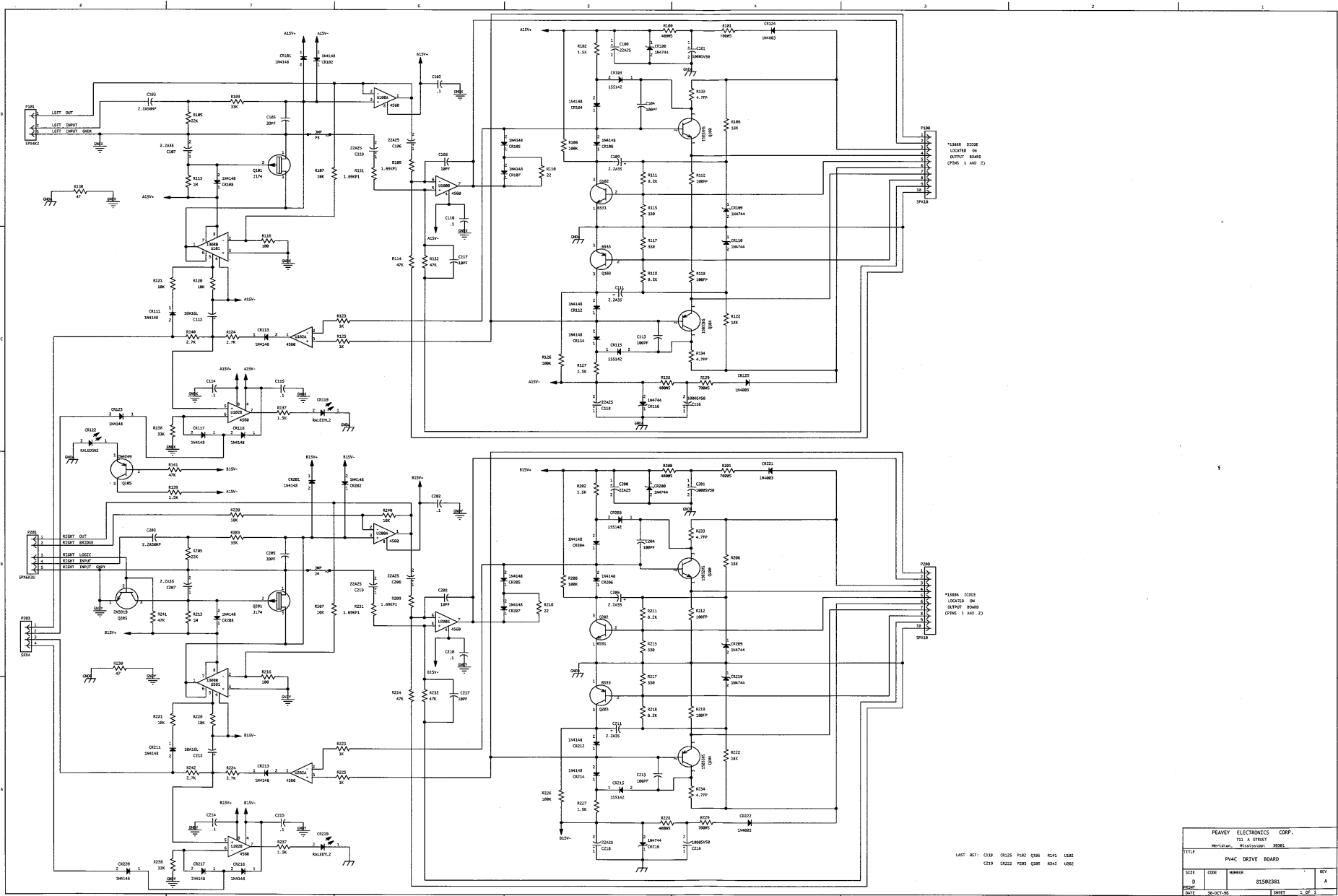
PEAVEY ELECTRONICS CORP.			
714 A STREET			
MERIDIAN, MISSISSIPPI 39301			
TITLE			
PV4C OUTPUT BD.			
SIZE	CODE	NUMBER	REV
C		98871781	A
DESIG	DATE	15-SEP-82	SHEET 1 OF 1

#81502381



PV4C OUTPUT

98871781

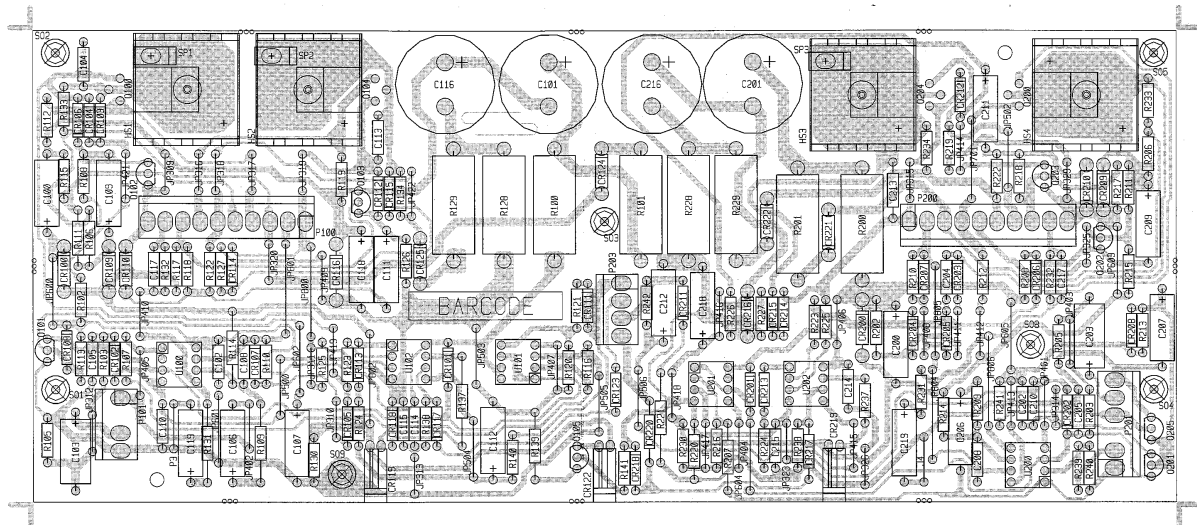


*150V 5000
LOCATED ON
OUTLET BOARD
(P300 1 AND 2)

*150V 5000
LOCATED ON
OUTLET BOARD
(P300 1 AND 2)

PEAVEY ELECTRONICS CORP.				
711 A STREET				
MERRIFIELD, MASS 01901				
TITLE PWC DRIVE BOARD				
SIZE	CODE	NAME#	REV	A
D		61502381		
DATE	30-OCT-86		SHEET	5 OF 1

LAST REF: C110 CR20 P300 Q200 R240 U200
C110 CR22 P200 Q200 R240 U200



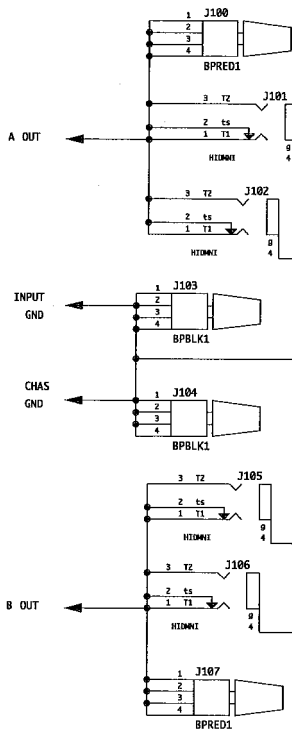
PV-4C Drive

BOARD NAME: PV4C OTPT BD
 ASSEMBLY LEVEL NUMBER: 99371781

PART	NAME	VALUE	NUMBER	DESCRIPTION AND DEVICE DESIGNATIONS	QTY	83180	83180	70483180	
1	LBRKT1	71500238	71500238	#74 L-BRACKET W/4-40 HOLE	2	83180	83180	70483180	SJ-83180 NPN 3A 180V TO-3 PWR TRANS Q100, Q101
1	3300R80	3300R80	70320132	3300MF - 20% - 80VDC - EL - R/S	2	73180	73180	70473180	SJ-73180 PNP 3A 180V TO-3 PWR TRANS Q102, Q103
1	.22R100M	.22R100M	70330007	.22 MFD 100VDC 5% MYLAR	2	83180	83180	70483180	SJ-83180 NPN 3A 180V TO-3 PWR TRANS Q200, Q201
1	.01CD	.01CD	70320248	.01MF-20%-1000VDC-CD-T&A	2	73180	73180	70473180	SJ-73180 PNP 3A 180V TO-3 PWR TRANS Q202, Q203
1	2.2A50NP	2.2A50NP	70320010	2.2MFD 20% 50V NP EL T&R	1	2KW5	2KW5	70250063	2K-5W-10%-WW-AXL R100
1	3300R80	3300R80	70320132	3300MF - 20% - 80VDC - EL - R/S	1	180	180	70240012	180-1/4W-5%-CF-T&R R101
1	.1BOX	.1BOX	70320086	.1 MFD 100VDC 10% BOX CAP	2	2.7K	2.7K	70240021	2.7K-1/4W-5%-CF-T&R R102, R103
1	3300R80	3300R80	70320132	3300MF - 20% - 80VDC - EL - R/S	2	.33W10	.33W10	70250011	.33-10W-10%-WW-AXL R104, R105
1	.1BOX	.1BOX	70320086	.1 MFD 100VDC 10% BOX CAP	1	5.6W5	5.6W5	70250026	5.6-5W-10%-WW-AXL R106
1	3300R80	3300R80	70320132	3300MF - 20% - 80VDC - EL - R/S	2	.33W10	.33W10	70250011	.33-10W-10%-WW-AXL R107, R108
1	.22R100M	.22R100M	70330007	.22 MFD 100VDC 5% MYLAR	1	2KW5	2KW5	70250063	2K-5W-10%-WW-AXL R109
1	.01CD	.01CD	70320248	.01MF-20%-1000VDC-CD-T&A	1	47K	47K	70240031	47K-1/4W-5%-CF-T&R R110
1	2.2A50NP	2.2A50NP	70320010	2.2MFD 20% 50V NP EL T&R	2	2.7K	2.7K	70240021	2.7K-1/4W-5%-CF-T&R R111, R112
1	3300R80	3300R80	70320132	3300MF - 20% - 80VDC - EL - R/S	1	5.6W5	5.6W5	70250026	5.6-5W-10%-WW-AXL R113
1	.1BOX	.1BOX	70320086	.1 MFD 100VDC 10% BOX CAP	1	2KW5	2KW5	70250063	2K-5W-10%-WW-AXL R200
4	CLIP1785	70901785	70901785	screw term, 6-32 - pcb mnt.	1	180	180	70240012	180-1/4W-5%-CF-T&R R201
1	13886	13886	70413886	CLIP1, CLIP2, CLIP3, CLIP4	2	2.7K	2.7K	70240021	2.7K-1/4W-5%-CF-T&R R202, R203
1	MR502	MR502	70400502	MR502/1N5402 200V, 3A SILICON DIODE	2	.33W10	.33W10	70250011	.33-10W-10%-WW-AXL R204, R205
2	MR752CD	MR752CD	70400752	MR752/P600D 200V, 6A SIL DIODE -CATH DOWN	1	5.6W5	5.6W5	70250026	5.6-5W-10%-WW-AXL R206
1	SAC187	SAC187	70400187	SAC187 200V TO220 TRIAC	2	.33W10	.33W10	70250011	.33-10W-10%-WW-AXL R207, R208
1	SBS14	SBS14	70460014	SBS14 8V TO-92 BI-DIRECTIONAL SWITCH T&A	1	2KW5	2KW5	70250063	2K-5W-10%-WW-AXL R209
1	MR502	MR502	70400502	MR502/1N5402 200V, 3A SILICON DIODE	1	47K	47K	70240031	47K-1/4W-5%-CF-T&R R210
2	MR752CU	MR752CU	70400752	MR752/P600D 200V, 6A SIL DIODE -CATH UP	2	2.7K	2.7K	70240021	2.7K-1/4W-5%-CF-T&R R211, R212
1	13886	13886	70413886	SZ-13886-2 DUAL DIODE	1	5.6W5	5.6W5	70250026	5.6-5W-10%-WW-AXL R213
1	MR502	MR502	70400502	MR502/1N5402 200V, 3A SILICON DIODE	*****				
2	MR752CD	MR752CD	70400752	MR752/P600D 200V, 6A SIL DIODE -CATH DOWN					
1	SAC187	SAC187	70400187	SAC187 200V TO220 TRIAC					
1	SBS14	SBS14	70460014	SBS14 8V TO-92 BI-DIRECTIONAL SWITCH T&A					
1	MR502	MR502	70400502	MR502/1N5402 200V, 3A SILICON DIODE					
2	MR752CU	MR752CU	70400752	MR752/P600D 200V, 6A SIL DIODE -CATH UP					
1	HS1466	98001466	98001466	204S HT/SNK					
5	SPD	73716194	73716194	.250 PC MNT SPADE .093 PCB					
2	MMP	MMP	73711812	J100, J101, J102, J103, J104					
5	SPD	73716194	73716194	.250 PC MNT SPADE .093 PCB					
2	MMP	MMP	73711812	R93-12 PN C.B. MALE MOLEX PIN					
2	.8MH	.8MH	70519917	.8MH AIR CORE COIL / CS1200					
2	SPX10	SPX10	XXXXXXXX	L100, L200					
				10 EACH OF STAKE PINS					
				P100, P200					

8 7 6 5 4 3 2 1

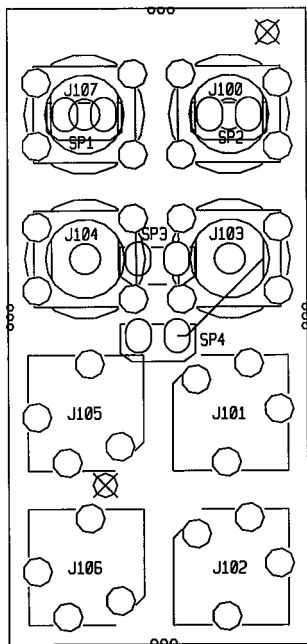
D
C
B
A



#81502381

PEAVEY ELECTRONICS CORP. 711 A STREET MERIDIAN, MISSISSIPPI 39301			
TITLE PV4C JACK BOARD			
SIZE B	CODE	NUMBER 98871840	REV A
PRINT	DATE 16-JUN-92	SHEET 1 OF 1	

8 7 6 5 4 3 2 1

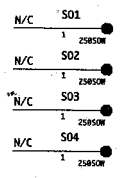
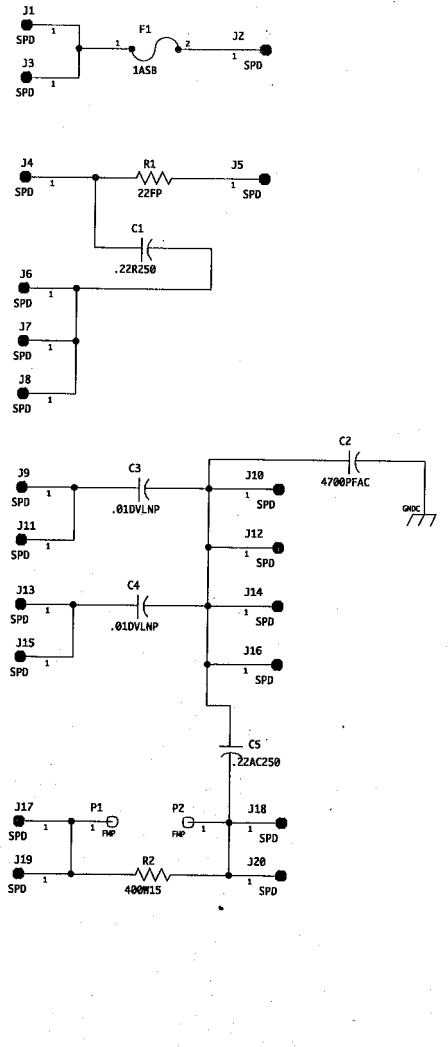


BOARD NAME: PV4CJACK
 ASSEMBLY LEVEL NUMBER: 99371840

** QTY.	PART NUMBER	DESCRIPTION AND DEVICE DESIGNATIONS *****
1	71466201	BINDING POST PC RED-90 J100
2	71466214	2 TIP HID JACK NINS W/SPD J101, J102
2	71466200	BINDING POST PC BLK-90 J103, J104
2	71466214	2 TIP HID JACK NINS W/SPD J105, J106
1	71466201	BINDING POST PC RED-90 J107
2	70600005	22GA JUMPER WIRES T&R JP800, JP801
4	73716194	.250 PC MNT SPADE .093 PCB SP1, SP2, SP3, SP4

PV4C JACK
 98871840

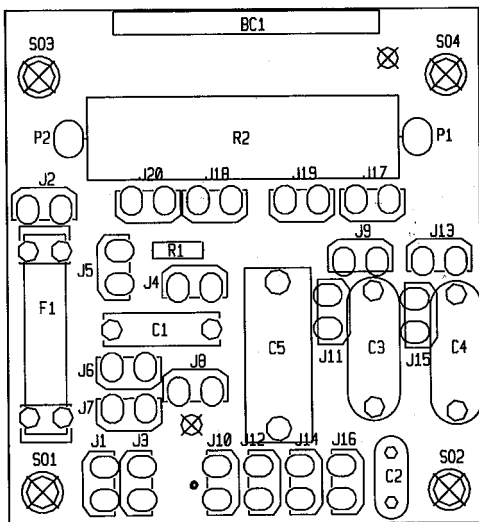
LAST REF USED: C3 F1 J20 P2 R2 S04



#81502381

PEAVEY ELECTRONICS CORP. PRINTED IN U.S.A.

PEAVEY ELECTRONICS CORP. 711 A STREET MERIDIAN, MISSISSIPPI 39301			
TITLE PV4C AC BOARD 120V			
SIZE B	CODE	NUMBER 98871770	REV A
PRINT	DATE 19-OCT-92		SHEET 1 OF 1

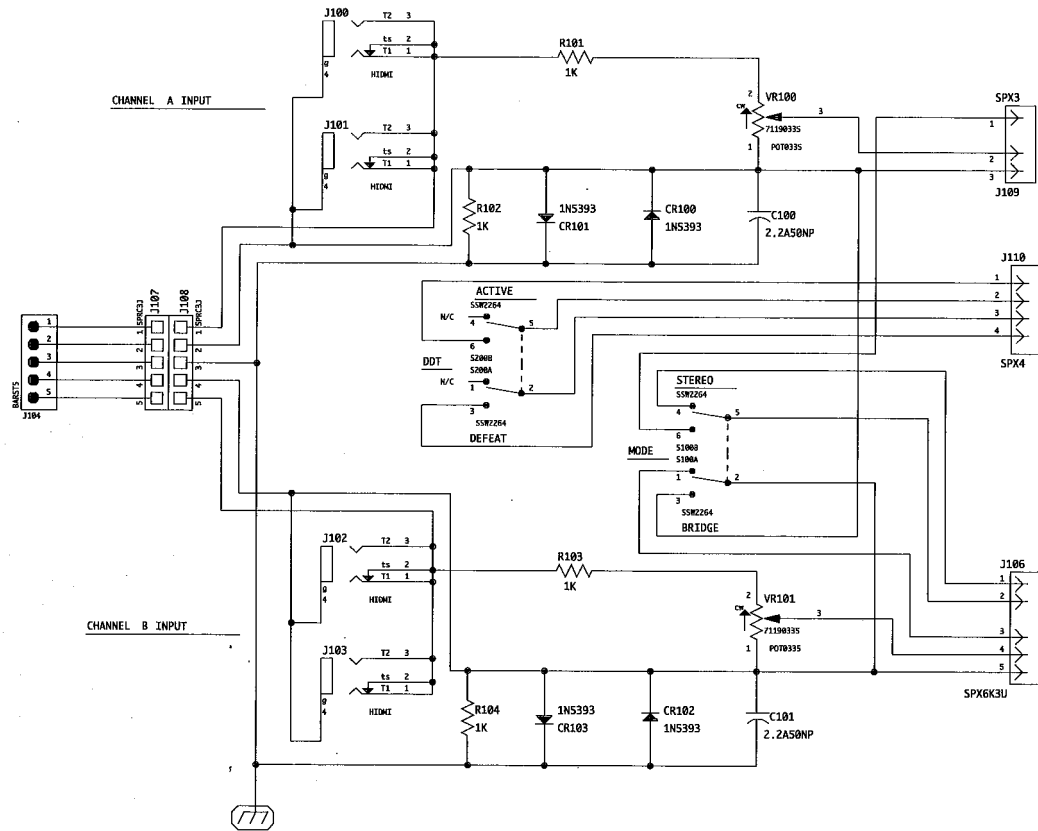


BOARD NAME: PV4CA120

ASSEMBLY LEVEL NUMBER: 99371770

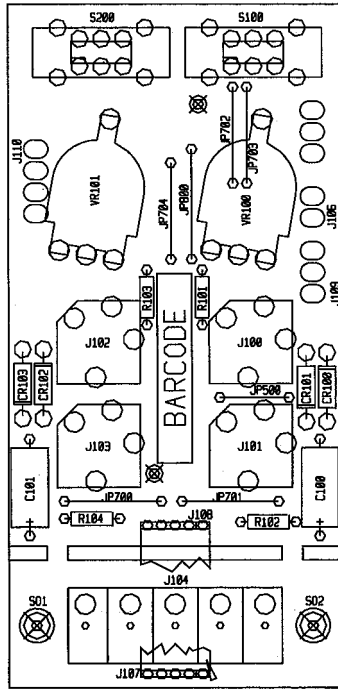
** QTY.	PART NUMBER	DESCRIPTION AND DEVICE DESIGNATIONS *****
1	70320129	.22MFD 10% 250V MY R/W C1
1	70320114	4700PF 400VAC EXP LINE CAP X C2
2	70320104	.01 MFD 125VDC DVL MYLAR +0-20% C3, C4
1	70320161	.22 mfd 20% 250vac my r/a C5
1	70900379	1 AMP S/B FUSE WITH 2 FUSECLIPS #70900816 F1
20	73716194	.250 PC MNT SPADE .093 PCB J1, J2, J3, J4, J5, J6, J7, J8, J9, J10, J11, J12, J13, J14, J15, J16, J17, J18, J19, J20
2	73711811	M118-171 C.B. FEMALE MOLEX PIN P1, P2
1	70240100	22FP-1/4W-5%—FP— R1
1	70250013	400-15W-10%-WW-AXL R2
4	70900785	SPACER, 1/4,R(#4),.187 SWAGE ALUM. S01, S02, S03, S04

LAST REF USED: C101 CR103 J110 R104 5100 VR101



#81502381

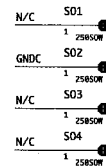
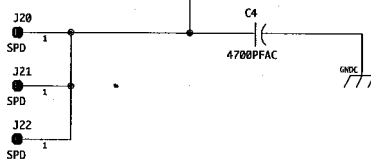
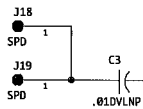
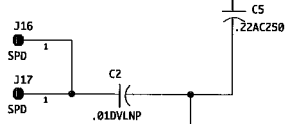
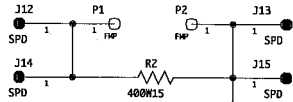
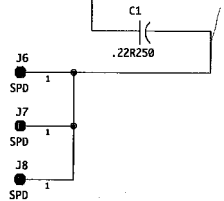
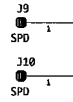
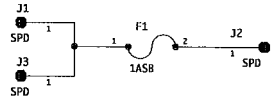
PEAVEY ELECTRONICS CORP. 711 A STREET MERIDIAN, MISSISSIPPI 39301			
TITLE PV4C INPUT BOARD			
SIZE B	CODE	NUMBER 98871751	REV A
PRINT DATE	29-JAN-93	SHEET	1 OF 1



BOARD NAME: PV4C1PB
 ASSEMBLY LEVEL NUMBER: 99371751

** QTY.	PART NUMBER	DESCRIPTION AND DEVICE DESIGNATIONS *****
2	70320010	2.2MΩ 20% 50V NP EL T&R C100, C101
4	70465393	1N5393-RL 200V, 1.5, 5% DIODE -T&R CR100, CR101, CR102, CR103
4	71466215	2 TIP HD JACK INSO W/SPD J100, J101, J102, J103
1	70900845	SINGLE ROW 5 POS STRIP WITHOUT EARS J104
1	XXXXXXXXXX	5 EACH OF STAKE PINS J106
2	70600037	5C PRE-TIN .100 3* JMPR J107, J108
1	XXXXSPX3	3 EACH OF STAKE PINS J109
1	XXXXXXXXXX	4 EACH OF STAKE PINS J110
4	70240017	1K-1/4W-5% -CF-T&R R101, R102, R103, R104
2	71322264	SLIDE SWITCH PC MOUNT S100, S200
2	70900788	SPACER, 1/8, R(#4), .187 SWAGE ALUM. S01, S02
2	71190335	50K LIN METRIC SPIDER 1MM VR100, VR101

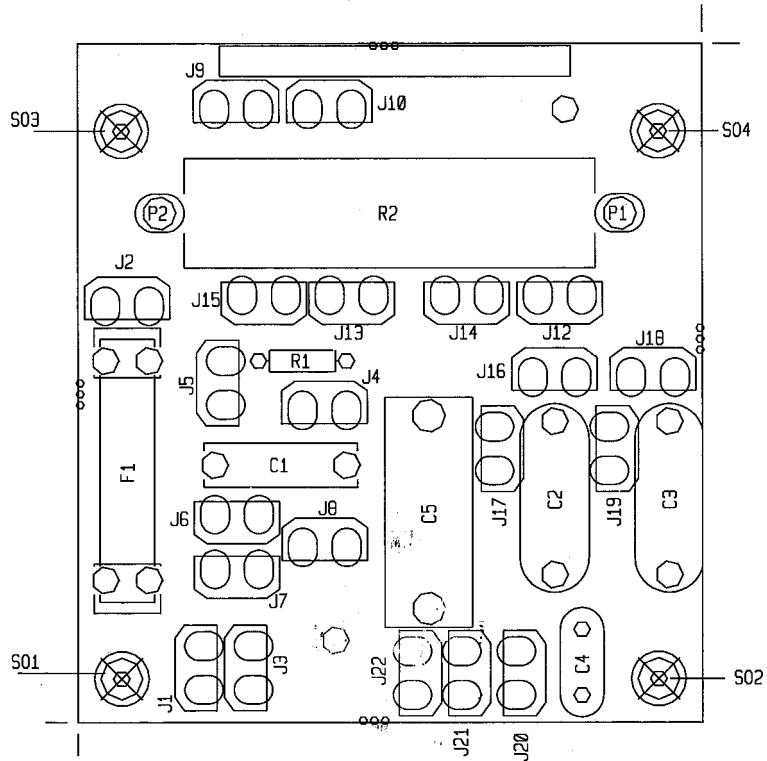
LAST REF USED: CS F1 J22 P2 R2 S04



#81502381

PRINTED IN U.S.A.

PEAVEY ELECTRONICS CORP. 711 A STREET MERIDIAN, MISSISSIPPI 39301			
TITLE PV4C AC BOARD 100V			
SIZE B	CODE	NUMBER 98871830	REV A
PRINT DATE	19-OCT-92	SHEET	1 OF 1



PV4C 100V AC
98871830

BOARD NAME: PV4C AC 100V

ASSEMBLY LEVEL NUMBER: 99371830

PART	PART	DESCRIPTION AND		
* QTY.	NAME	VALUE	NUMBER	DEVICE DESIGNATIONS *****
1	.22R250	.22R250	70320129	.22MFD 10% 250V MY R/W C1
2	.01DVLNP	.01DVLNP	70320104	.01 MFD 125VDC DVL MYLAR +0-20% C2, C3
1	4700PFAC	4700PFAC	70320114	4700PF 400VAC EXP LINE CAP X C4
1	.22AC250	.22AC250	70320161	.22 mfd 20% 250vac my r/a C5
1	1ASB	1ASB	70900379	1 AMP S/B FUSE WITH 2 FUSECLIPS #70900283 F1
21	SPD	73716194	73716194	.250 PC MNT SPADE .093 PCB J1, J2, J3, J4, J5, J6, J7, J8, J9, J10, J12, J13, J14, J15, J16, J17, J18, J19, J20, J21, J22
2	FMP	FMP	73711811	M118-171 C.B. FEMALE MOLEX PIN P1, P2
1	22FP	22FP	70240100	22FP-1/4W-5%—FP— R1
1	400W15	400W15	70250013	400-15W-10%-WW-AXL R2
4	250SOW	70900785	70900785	SPACER, 1/4,R(#4),.187 SWAGE ALUM. S01, S02, S03, S04

8

7

6

5

4

3

2

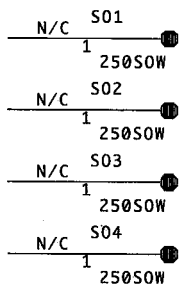
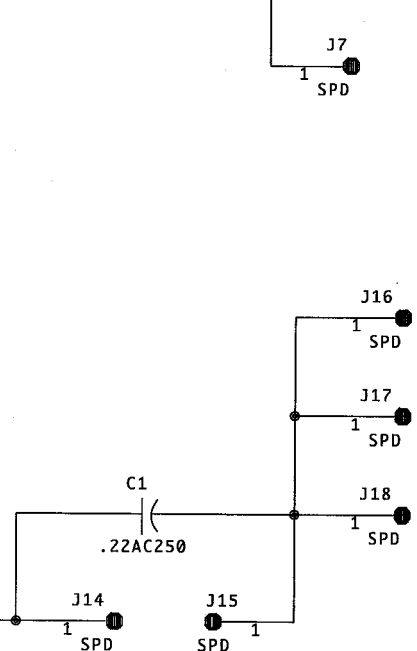
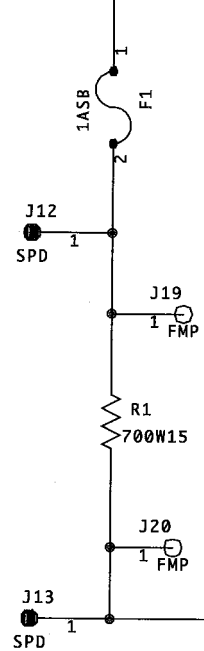
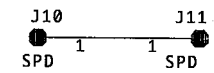
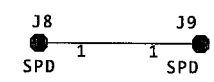
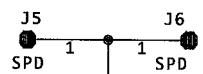
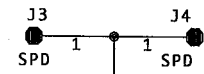
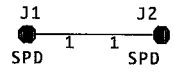
1

D

C

B

A



#81502381

PEAVEY ELECTRONICS, CORP. 711 'A' STREET MERIDIAN, MISSISSIPPI 39301			
TITLE PV4C AC BD 230V			
SIZE A PRINT	CODE	NUMBER 98871820	REV A
DATE 29-OCT-92	SHEET 1 OF 1		

8

7

6

5

4

3

2

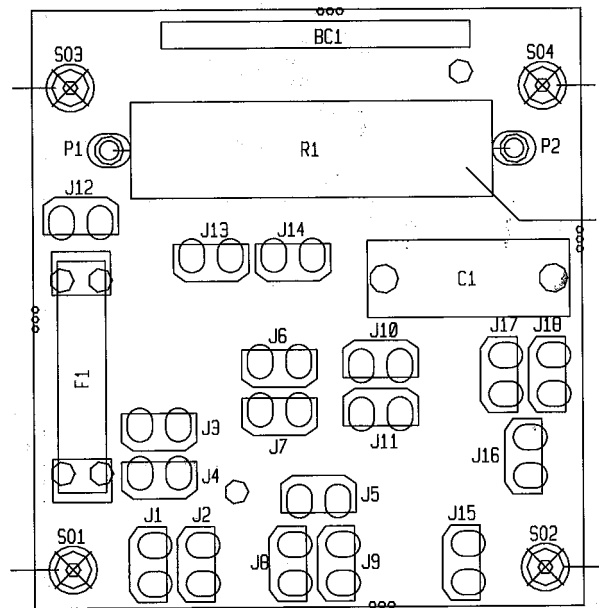
1

D

C

B

A



PV4C 230V AC (EXPORT)
98871820

BOARD NAME: PV4C 230V AC

ASSEMBLY LEVEL NUMBER: 99571820

PART	VALUE	PART NUMBER	DESCRIPTION AND
* QTY.	NAME	NUMBER	DEVICE DESIGNATIONS *****

1	.22AC250	.22AC250 70320161	.22 mfd 20% 250vac my r/a C1
1	1ASB	1ASB 70900379	1 AMP S/B FUSE WITH 2 FUSECLIPS #70900816 F1
18	SPD	73716194 73716194	.250 PC MNT SPADE .093 PCB J1, J2, J3, J4, J5, J6, J7, J8, J9, J10, J11, J12, J13, J14, J15, J16, J17, J18
2	FMP	FMP 73711811	M118-171 C.B. FEMALE MOLEX PIN P1, P2
1	700W15	700W15 70250037	700-15W-10%-WW-AXL R1
4	250SOW	70900785 70900785	SPACER, 1/4,R(#4),.187 SWAGE ALUM. S01, S02, S03, S04
