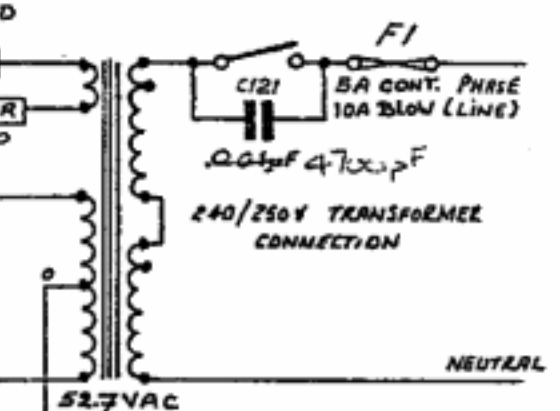
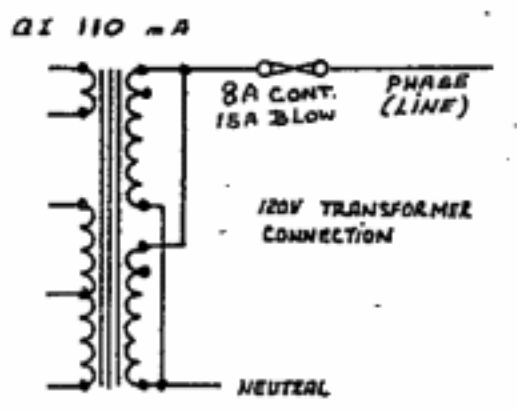


VOLTAGES SHOWN WITH NO LOAD
D.C. RAILS FULL LOAD

180W+180W
INTO 8Ω



- R1 - R31 - 1K8
- R2 - R32 - 47K
- R3 - R33 - 2K2
- R4 - R34 - 3K3
- R5 - R35 - 3K3
- R6 - R36 - 47K
- R7 - R37 - 2M2
- R8 - R38 - 27K
- R9 - R39 - 2K7
- R10 - R40 - 56K
- R11 - R41 - 270R
- R12 - R42 - 22K
- R13 - R43 - 100R
- R14 - R44 - 100R
- R15 - R45 - 47K
- R16 - R46 - 47K
- R17 - R47 - 220R
- R18 - R48 - 220R
- R19 - R49 - 220R
- R20 - R50 - 220R
- R21 - R51 - 4R7 (2W)
- R22 - R52 - 10R (2W)
- R23 - R53 - 10R (2W)
- R24 - R54 - 180R
- R25 - R55 - 180R
- R26 - R56 - 6K8 (2W)
- R27 - R57 - 6K8 (2W)
- R28 - R58 -
- R29 - R59 -
- R30 - 27K
- R100 - 560R (2W)

- C1 - C21 - 2.2μF
- C2 - C22 - 10PF
- C3 - C23 - 150PF
- C4 - C24 - 100μF
- C5 - C25 - 3.3PF
- C6 - C26 - 0.1μF
- C7 - C27 - 6.8PF
- C8 - C28 - 0.022μF
- C9 - C29 - 0.047μF
- C10 - C30 - 0.047μF
- C11 - C31 - 10μF
- C12 - C32 - 0.1μF
- C13 - C33 - 10μF
- C14 - C34 - 0.1μF
- C15 - C35 - 10μF
- C16 - C36 - 0.1μF
- C17 - C37 - 10μF
- C18 - C38 - 0.1μF
- C19 - C39 - 15000μF
- C20 - C3 - 15000μF
- C121 - 0.047μF 470μF 250V
- D1 - D11 - IN4148
- D2 - D12 - IN4148
- D3 - D13 - IN4148
- D4 - D14 - IN4004
- D5 - D15 - IN4004
- D6 - D16 - IN4004
- D7 - D17 - IN4004

- Q1 - Q11 - PSLP-3
- Q2 - Q12 - PSLP-3
- Q3 - Q13 - PSLN-3
- Q4 - Q14 - PSLN-3
- Q5 - Q15 - PSLP-3
- Q6 - Q16 - 2SK135
- Q7 - Q17 - 2SK135
- Q8 - Q18 - 2SJ50
- Q9 - Q19 - 2SJ50
- AV1 - AV3 - 1K
- AV2 - AV4 - 100K
- Z01 - Z03 - 9.1V
- Z02 - Z04 - 9.1V
- BR1 - BR354
- L1 - L2 - CHTD134
- F1 - 5A CONT. (240VAC)
10A BLOW
- F2 - F3 - F4 - F5
5A CONT.
10A BLOW

PROPRIETARY WARNING
THIS DOCUMENT PRINT OR ARTICLE CONTAINS PATENTED COPYRIGHT AND PROTECTED DESIGNS MATERIAL INFORMATION AND DATA OWNED BY PERREUX SOUND LTD AND IS NOT FOR SALE OR OTHER DISPOSITION ALTERATION DUPLICATION COPY APPLICATION OR USE EITHER WHOLLY OR PARTLY PUBLICLY PRIVATELY WHERESOEVER AND HOWSOEVER WITHOUT EXPRESSLY THE WRITTEN CONSENT OF PERREUX SOUND LTD. FIRST OBTAINED. ANY UNAUTHORIZED BREACH OR ATTEMPTED BREACH OF THIS WARNING WILL BE LEGALLY ACTIONABLE.

VOLTAGES SHOWN WERE MEASURED WITH A FLUKE MODEL 77 WITH NO INPUTS OR OUTPUTS CONNECTED. UNLESS STATED OTHERWISE ALL ARE D.C. VOLTS, REFERENCED TO CHASSIS AND ARE APPROXIMATE ONLY. SOME VOLTAGES WILL VARY WITH VARIATIONS IN MAINS/LINE SUPPLY.

CIRCUIT DIAGRAM
3000B

ISSUE 6 4-3-86
12/7/84

L/814