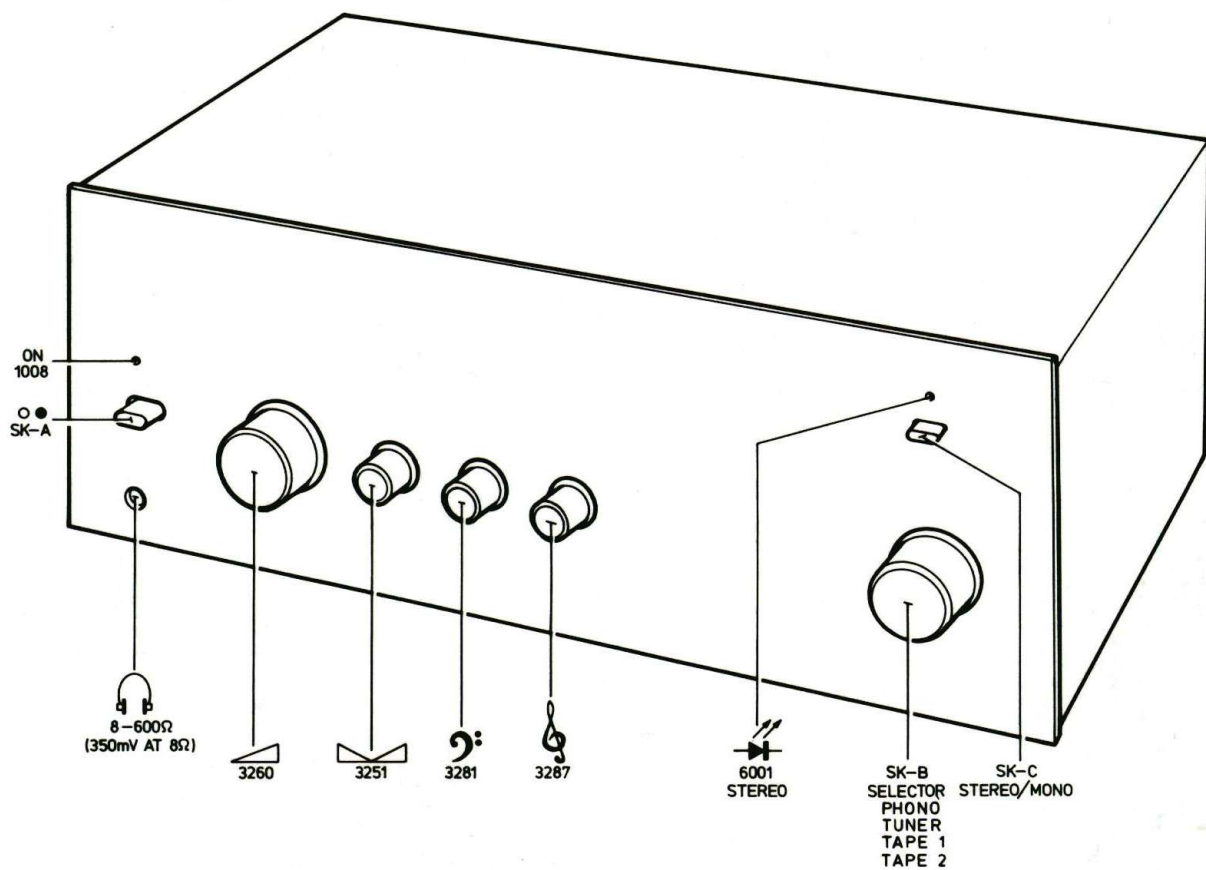
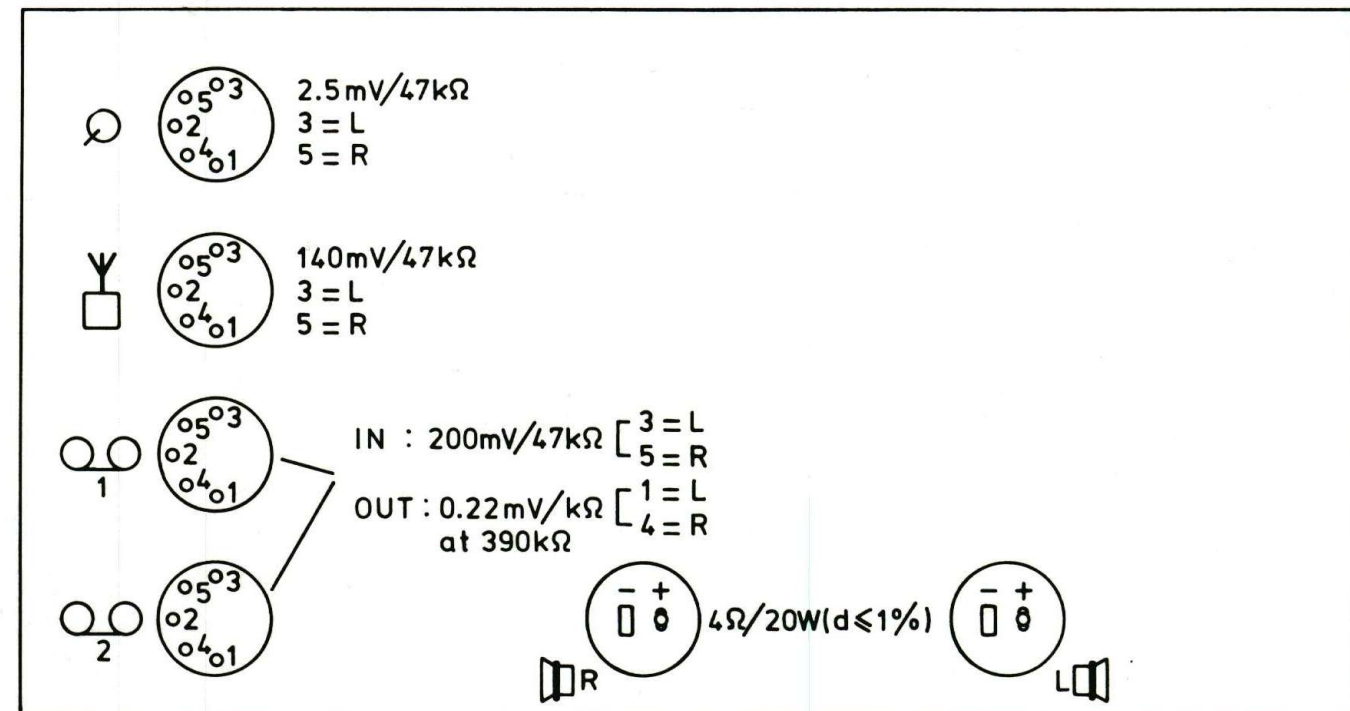


Service
Service
Service

Service Manual



15373 B12



15324A12

(GB)

Safety regulations require that the set be restored to its original condition and that parts which are identical with those specified, be used.

(NL)

Veiligheidsbepalingen vereisen, dat het apparaat bij reparatie in zijn oorspronkelijke toestand wordt teruggebracht en dat onderdelen, identiek aan de gespecificeerde, worden toegepast.

(F)

Les normes de sécurité exigent que l'appareil soit remis à l'état d'origine et que soient utilisées les pièces de rechange identiques à celles spécifiées.

(D)

Die Sicherheitsvorschriften erfordern, dass das Gerät sich nach der Reparatur in seinem originalen Zustand befindet und dass die benutzten Einzelteile den aufgeführten Teilen identisch sind.

(SF)

Korjatessa laitetta on turvallisuussyistä ehdottomasti eneteltävä oikein ja käytettävä tehtaan määrittämiä alkuperäisvaraosia.

(I)

Le norme di sicurezza esigono che l'apparecchio venga rimesso nelle condizioni originali e che siano utilizzati i pezzi di ricambio identici a quelli specificati.

(S)

Säkerhetsbestämmelserna kräver att varje reparation skall utföras korrekt med hänsyn till ursprunglig placering av komponenter, ledningar etc. och med användning af föreskrivna reservdelar.

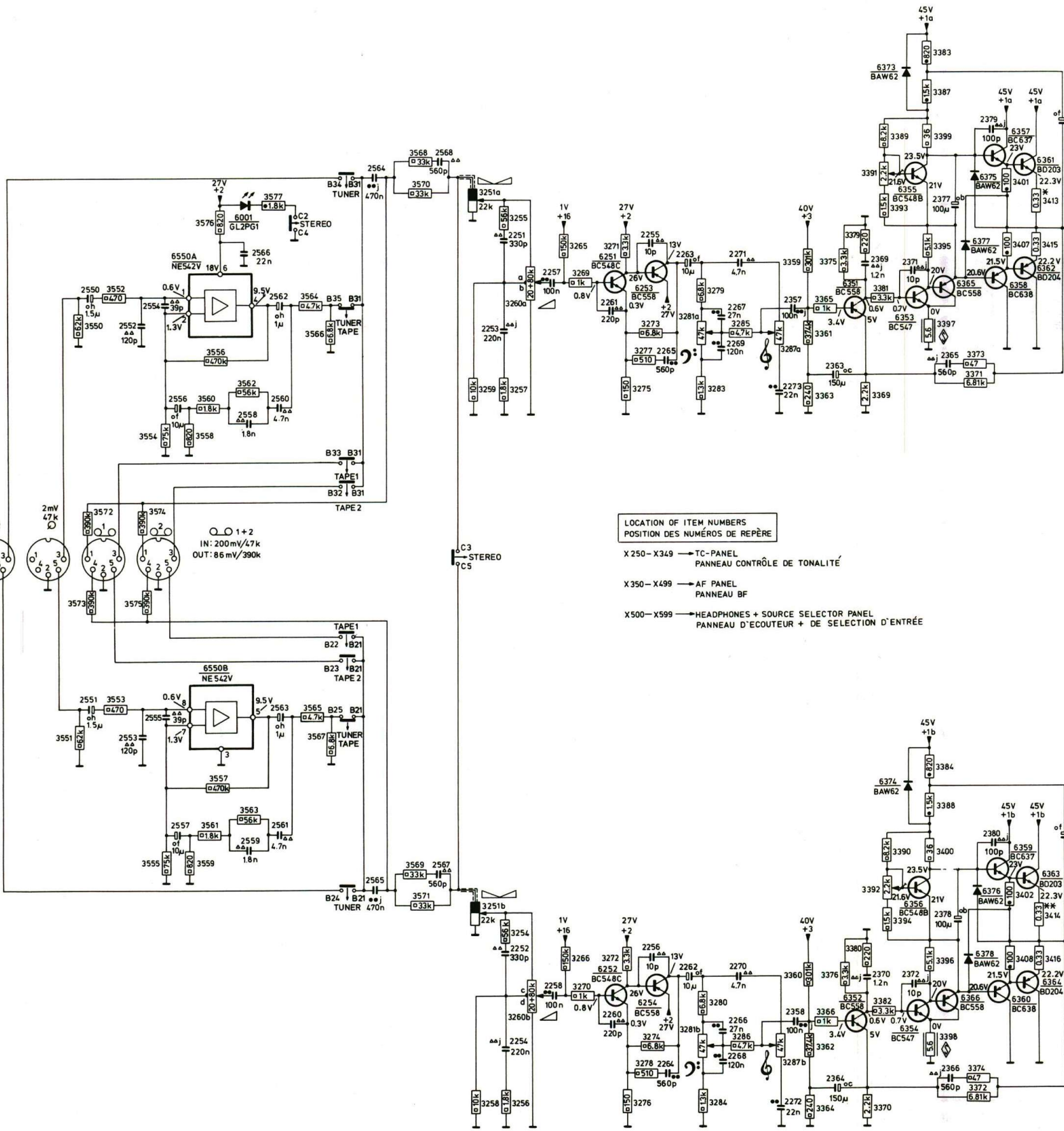
(DK)

Myndighedernes sikkerheds- og radiostøjbestemmelser kræver, at enhver reparation skal udføres korrekt m.h.t. overholdelse af originalplacering og montering af komponenter, ledningsbunder, etc., og ved anvendelse af de foreskrevne reservedele.

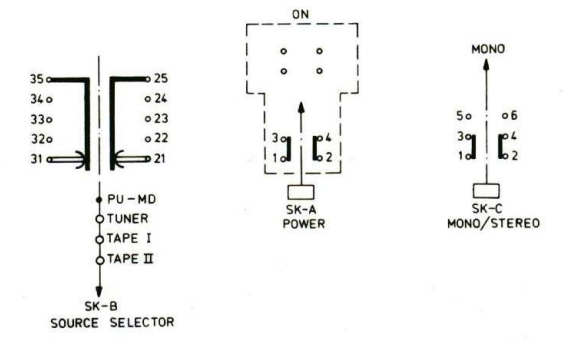
(N)

Sikkerhetsbestemmelser kreves at apparatet blir gjenopprettet til original utførelse og at deler som er identiske med de som er spesifisert, blir benyttet.

MISC.	TS6251, 6253										TS6351, D6373, TS6355, 6353, 6365, D6377, 6375, TS6357, 6358, 6361, 6362										TS6384					S5001					MISC.					
C	TS6252, 6254										TS6352, D6374, TS6356, 6354, 6366, D6378, 6376, TS6359, 6360, 6363, 6364										D6386					D6369					L1008					MISC.
2550	2552	2554	2556	2566	2568	2562	2560	2568	2253	2251	2257	2261	2255	2265	2262	2267	2269	2271	2357	2273	2263	2369	2371	2377	2365	2379	2373	2501	2259	2359	2355	2354	2352	2351	2353	3428
3550	3552	3554	3556	3566	3568	3572	3570	3568	3251a	3255	3260a	3265	3269	3271	3279	3359	3375	3379	3389	3391	3393	3383	3387	3389	3401	3407	3413	3415	3425	3501	3503	3502	1351	3427	3422	
3551	3553	3555	3557	3567	3570	3572	3574	3569	3251b	3256	3260b	3266	3270	3272	3280	3275	3277	3273	3281a	3283	3285	3287a	3361	3363	3365	3369	3381	3395	3397	3373	3371	3500	3502	1352	3424	3423
3573	3575	3555	3561	3557	3577	3565	3571	3258	3254	3276	3278	327k	3281b	3284	3286	3287b	3362	3364	3366	3370	3382	3396	3398	3374	3372	3372	3372	3372	3372	3372	3372	3372	3372	3372	3372	



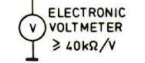
* THE QUIESCENT CURRENT MUST BE 50mA ± 10% THROUGH 3413
COURANT DE REPOS : 50mA ± 10% PAR 3413



DRAWN IN POSITION PU-MD
DESSINE EN POS TD

- SAFETY CARBON RESISTOR
- CARBON RESISTOR E24-SERIES 0.125W 5%
- CARBON RESISTOR E24-SERIES 0.25W < 1MΩ 5%
- CARBON RESISTOR E24-SERIES 0.5W > 1MΩ 10%
- PLATE CERAMIC CAPACITOR
- FLAT-FOIL POLYESTER CAPACITOR
- MINIATURE ELECTROLYTIC CAPACITOR

* b = 4V g = 40V r = 250V
c = 6.3V h = 63V s = 350V
d = 10V j = 100V
e = 16V m = 150V
f = 25V q = 200V



ELECTRONIC VOLTMETER ≥ 40kΩ/V

LOCATION OF ITEM NUMBERS
POSITION DES NUMÉROS DE REPÈRE

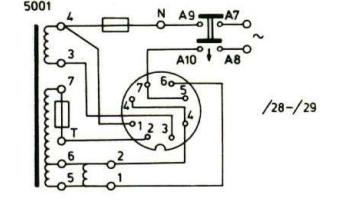
X250-X349 → TC-PANEL
PANNEAU CONTRÔLE DE TONALITÉ

X350-X499 → AF PANEL
PANNEAU BF

X500-X599 → HEADPHONES + SOURCE SELECTOR PANEL
PANNEAU D'ÉCOUTEUR + DE SÉLECTION D'ENTRÉE

* THE QUIESCENT CURRENT MUST BE 50mA ± 10% THROUGH 3414
COURANT DE REPOS : 50mA ± 10% PAR 3414

CONNECTED			
220V	2-3	4-7	
127V	1-2	3-4	6-7
240V	2-3	5-6	
110V	1-2	3-4	4-7

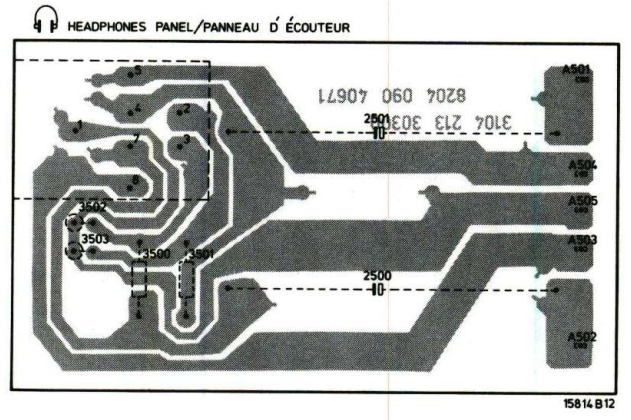
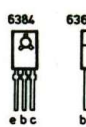
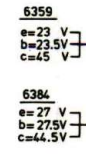
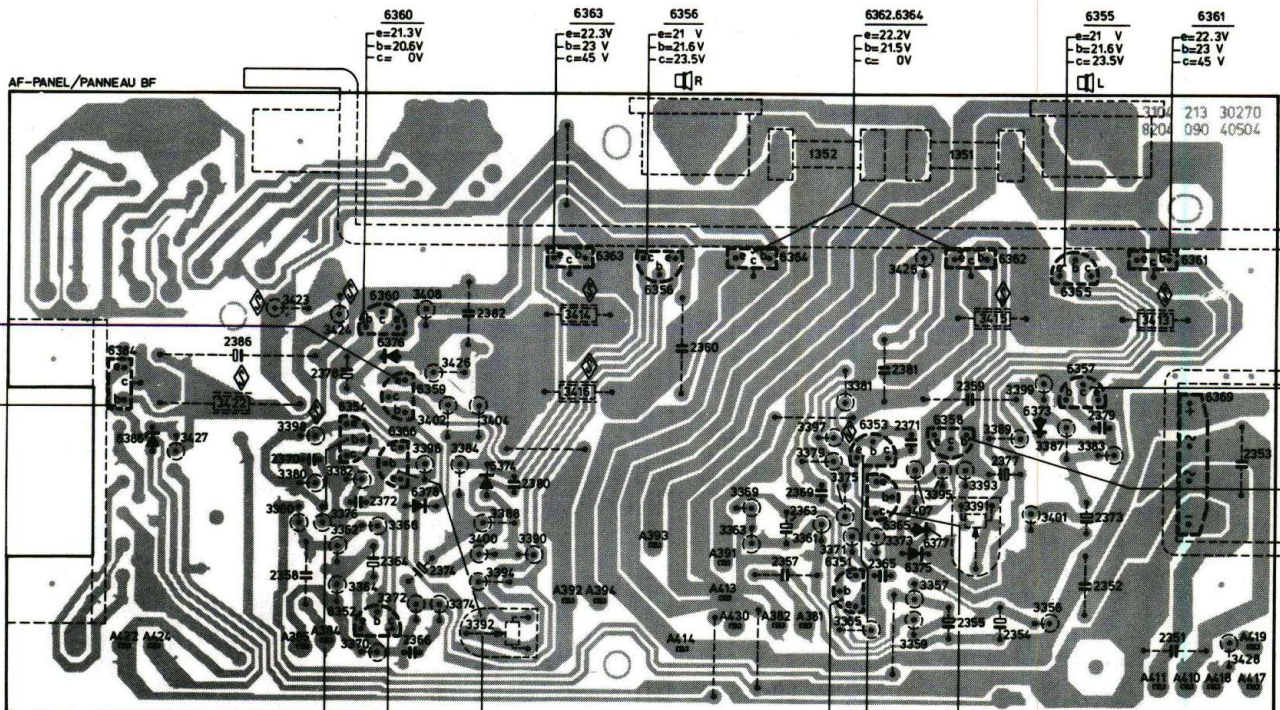


/28-/29

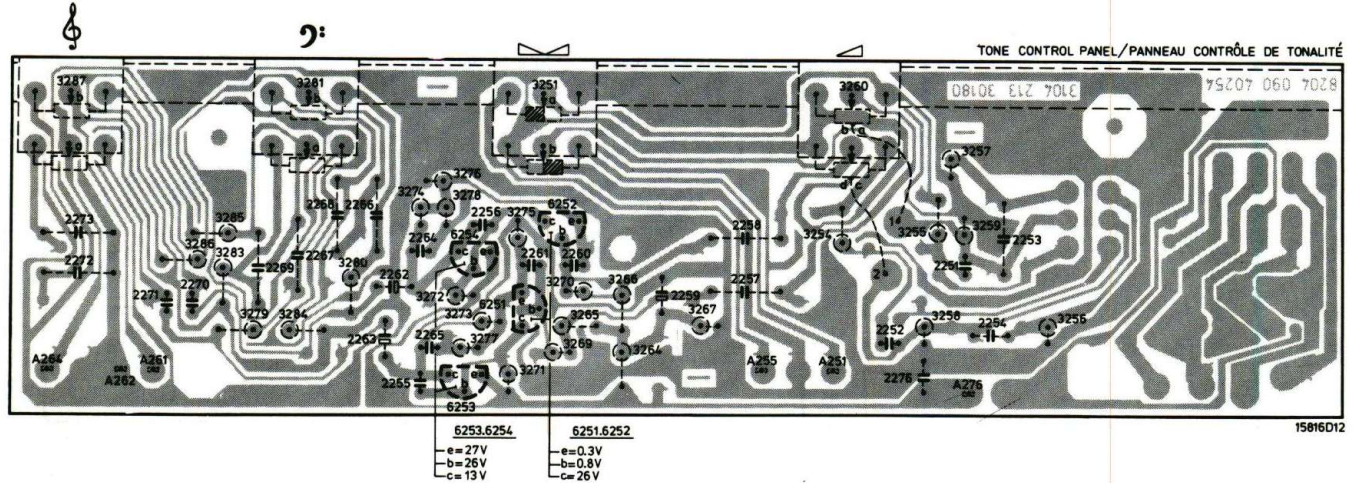
ONLY FOR /15
SEULEMENT POUR /15

- CONNECT A10 WITH 5 OF 5001
- CONNECT ON THE TRANSFORMER 6 WITH 2 AND 5 WITH 1

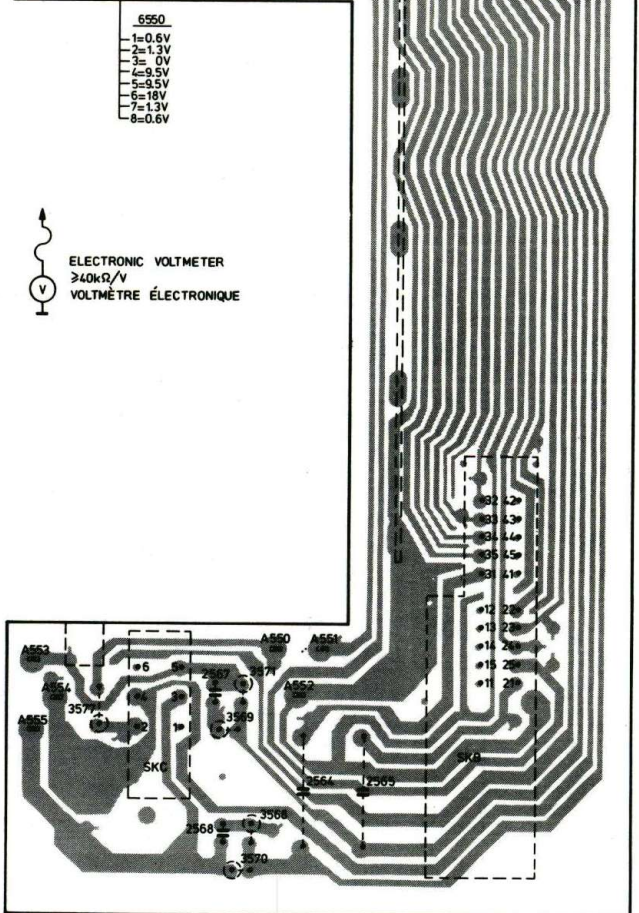
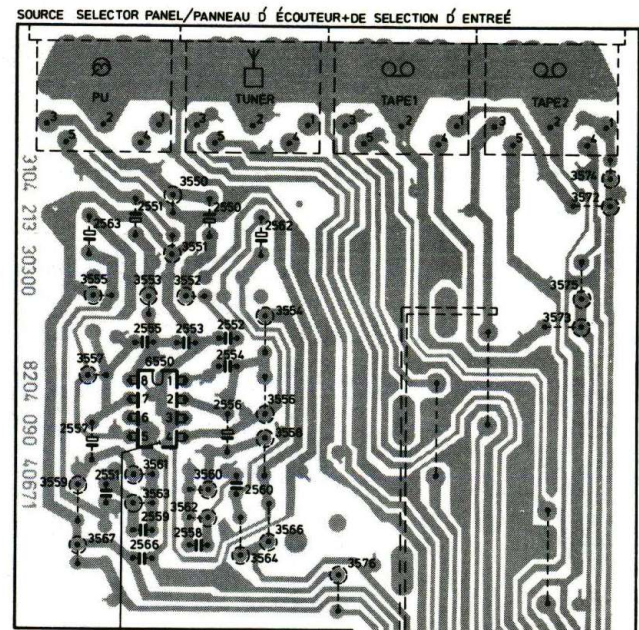
MISC.	6384	6360,6376,6359	6363	6356	6364	1352	6353	6358,1351,6382	6355,6357,6361	6369			
C	2351 + 2366	2358	2364	2366	2360	2357,2363	2365	2355,2359,2354	2352	2351	2353		
R	3373 + 3396	3380,3376,3382,3396,3374,3384,3388,3394,3392,3390	3369,3363	3361,3371,3365,3357,3359	3378,3381,3375,3373,3395,3393,3391,3389,3387,3383	3372,2379	3356	3397	3407,3425	3415	3401,3399	3413	3428



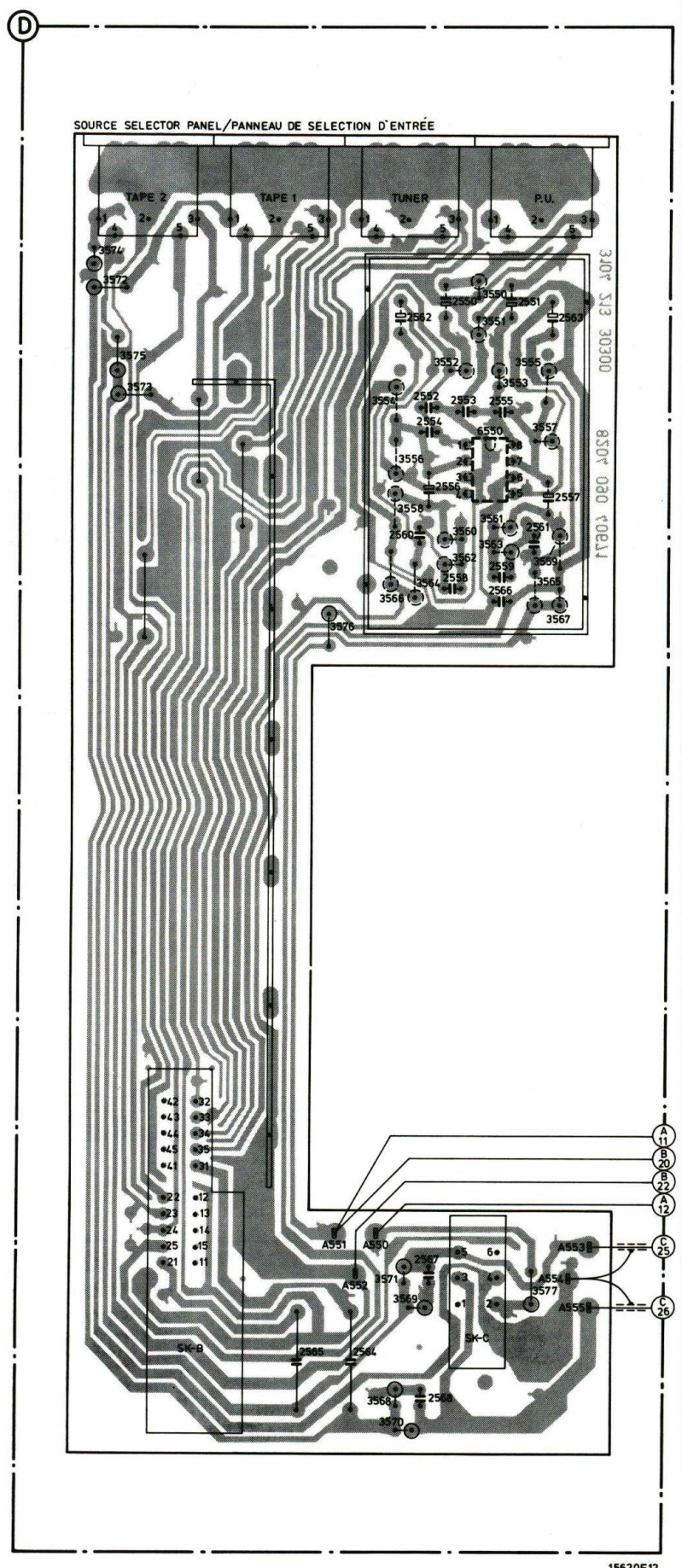
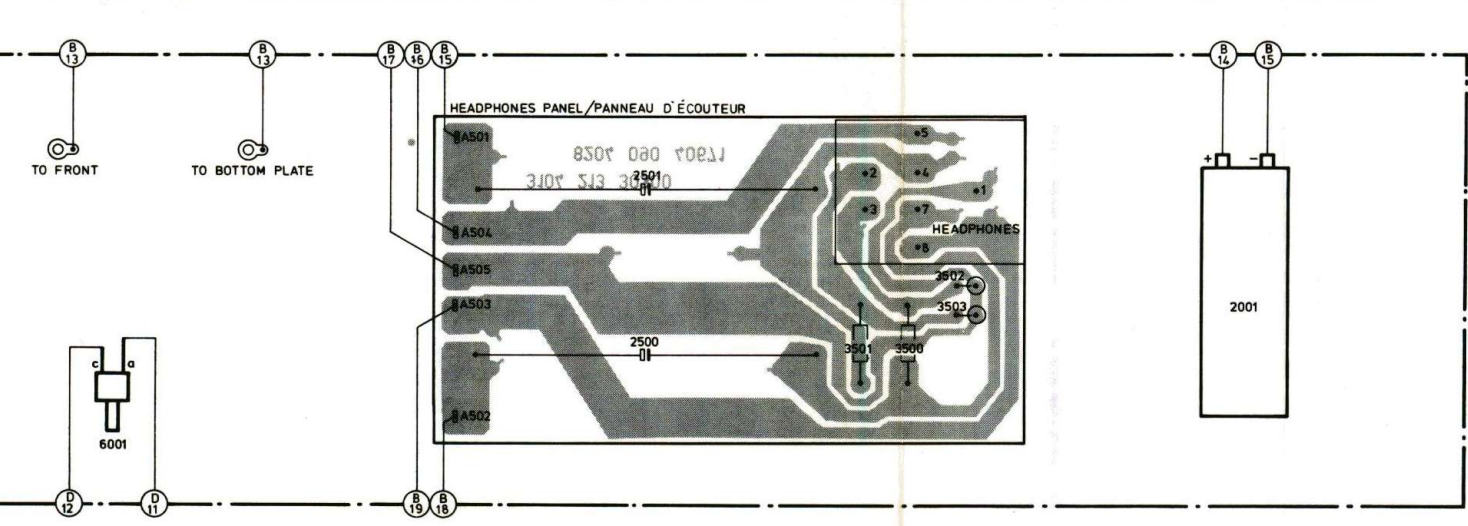
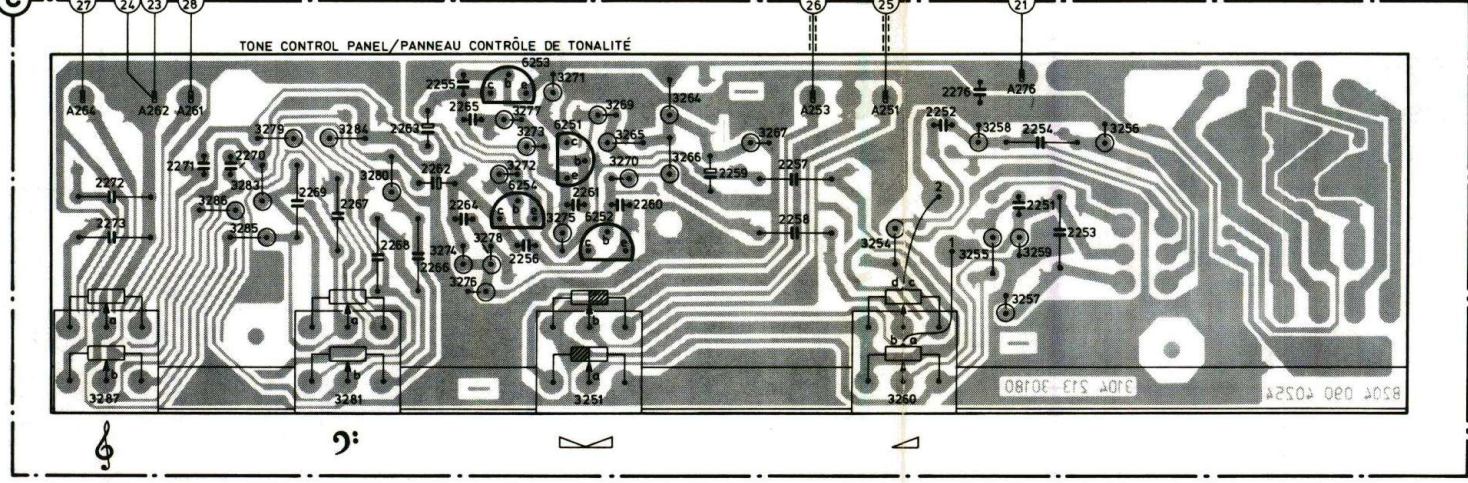
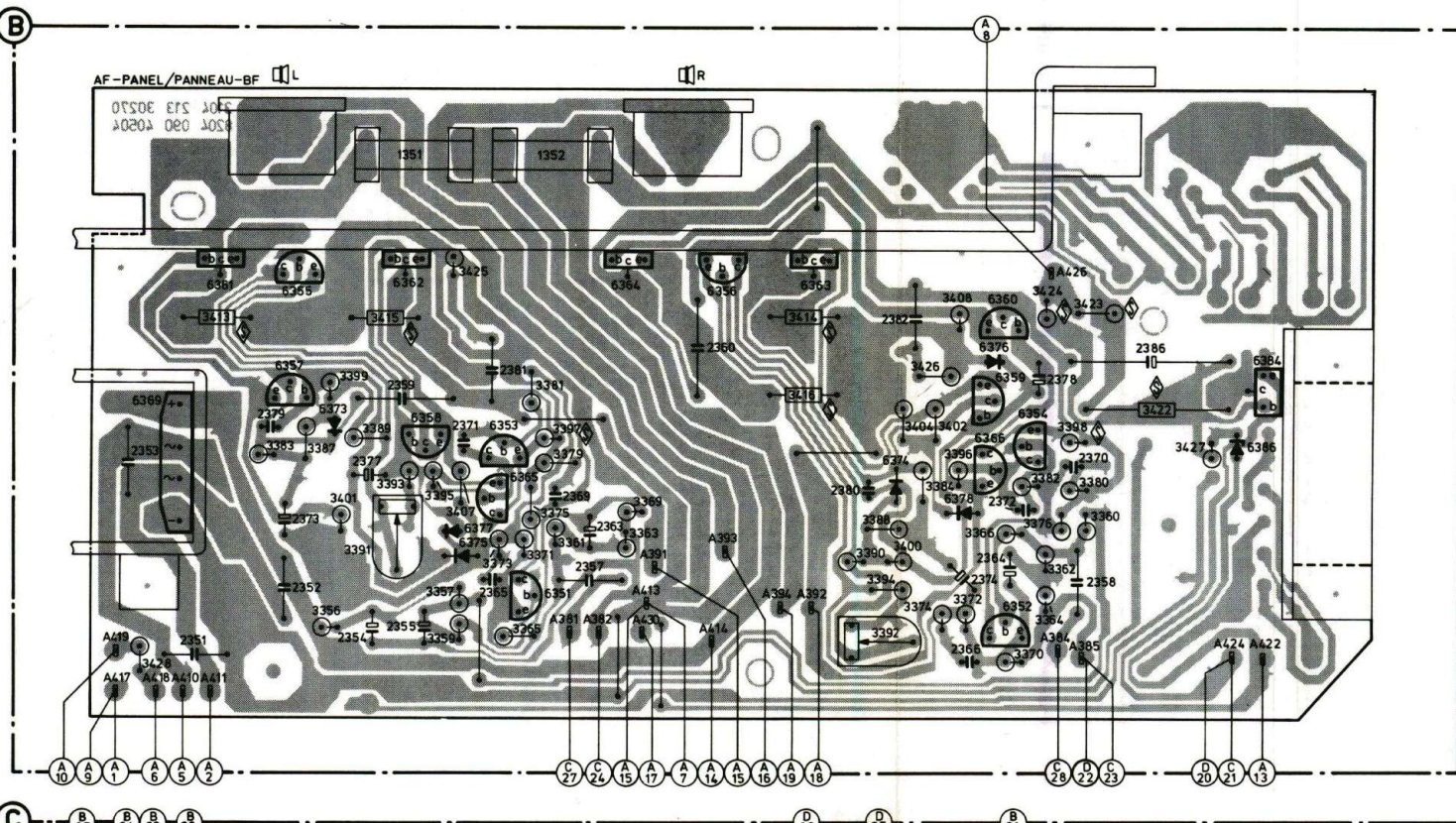
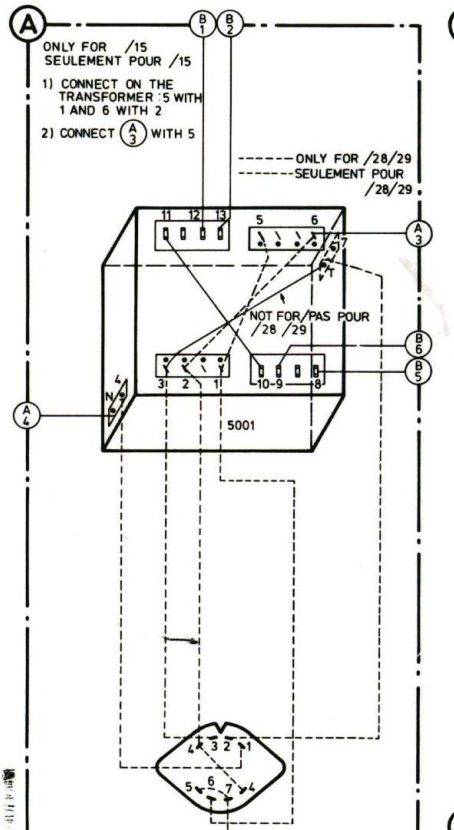
MISC.	6253,6254,6251	6252								
C	2273,2272	2271,2270	2269	2267	2268	2266,2262+2265,2255,2256,2261	2260	2259	2258,2257	2252,2276,2251,2254,2253
R	3287a,b	3286,3283,3285,3279,3284,3281a,b,3280,3272+3278,3251a,b,3269+3271,3264+3266,3267	3254,3260a+d,3255,3257+3259	3256						

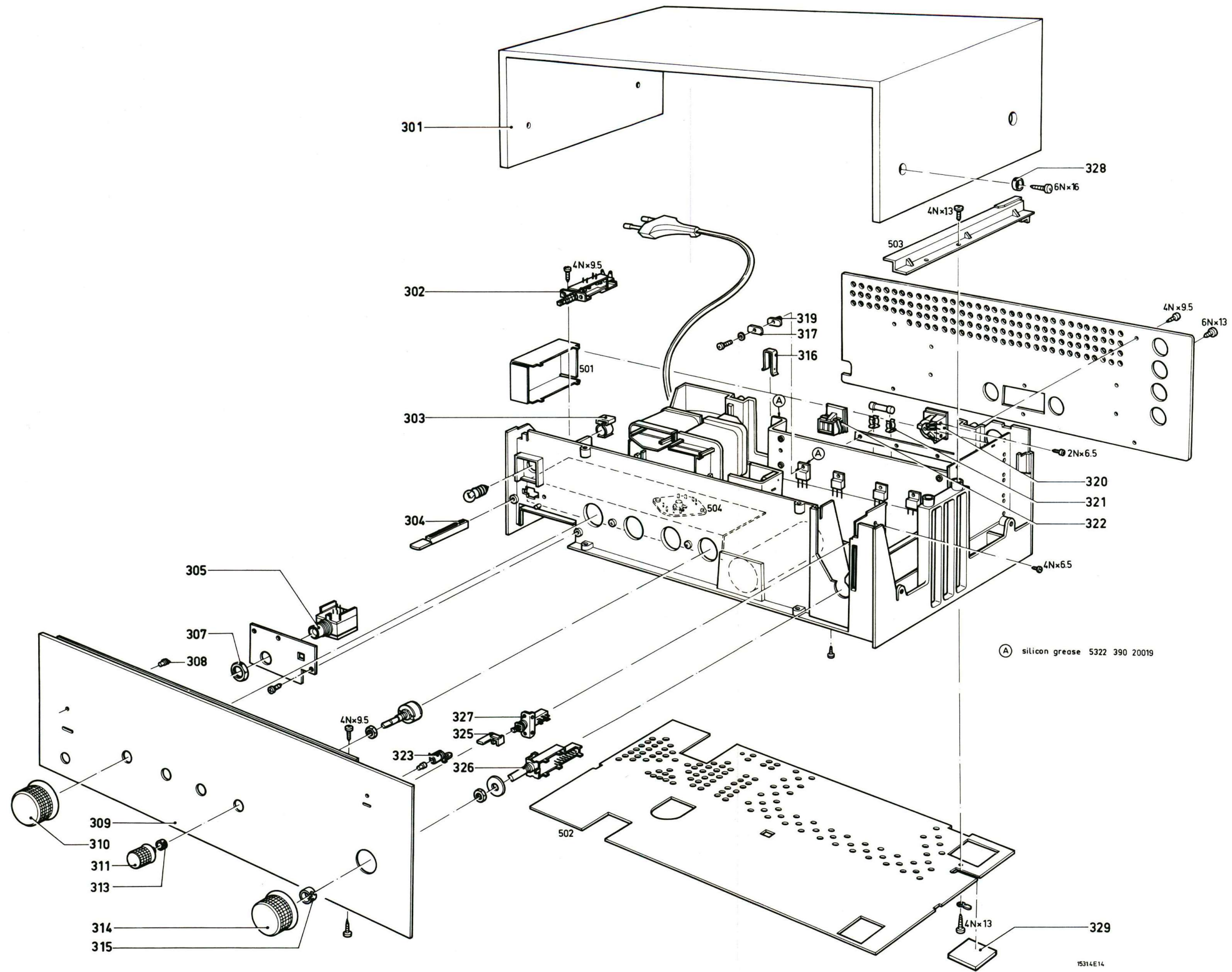


MISC.	C	R
2551		3574
2550		3550
2563		3572
2562		3551
2552		3555
2553		3553
2555		3552
2554		3575
6550		3554
2556		3557
2557		3556
2558		3558
2551		3561
2560		3560
2559		3559
2558		3563
2566		3562
		3566
		3567
		3564
		3576
2567		3571
		3577
		3568
SKB		2564
SKC		2565
		3568
		3570



MISC	5001	6369 6361 6357.6355.6373.1351.6362.6358.6377.6365.6353.1352	6364	6356	6363	6374.6366.6359.6376.6360.6354	6386.6384	6550		
	SK-A 1008	6001	6375.6351.6251 + 6254			6378 6352		SK-B		
C	2001 + 2273	2272.2273	2271.2270	2269.2267.2268.2262+2266.2255	2261	2259	2257.2258	2252.2276.2251.2254.2253	2001	SK-C
	2351 + 2567	2353	2351	2379.2373.2352.2377.2354.2359.2355.2371.2381.2365.2369.2363.2357.2501.2500.2360				2380.2382.2374.2366.2364.2372.2378.2370.2358.2386		
R	3251 + 3287	3287	3286.3285.3283.3279.3284.3281.3280	3274 + 3278.3269+3273.3251.3264 + 3266	3267			3254.3260.3258.3255.3257.3259	3256	2564.2565.2567.2568.2562.2560.2558.2550 + 2556.2559.2566.2561.2557.2563
	3356 + 3398		3383.3387.3356.3389.3393.3395.3359.3357.3373.3365.3371.3381.3375.3397.3379.3361.3363	3369.3390.3392.3398.3394.3374.3396.3372.3366.3370.3382.3362.3364.3376.3398.3380.3360						
	3399 + 3577	3428	3413	3399.3401	3415	3425.3407			3572 + 3575	3576 3568 + 3571.3550 + 3557.3558 + 3567.3577





301	4822 420 60047
302	4822 276 10693
303	4822 255 10007
304	4822 410 30169
305	4822 267 30277
307	4822 505 10571
308	4822 404 20267
309	4822 426 50287
309/28	4822 426 50313
310	4822 413 50986
311	4822 413 50987
313	4822 532 10284
314	4822 413 50985
315	4822 492 60268
316	4822 492 40658
317	4822 255 40138
319	4822 532 51069
320	4822 267 40209
321	4822 492 60063
322	4822 267 30264
323	4822 256 90201
325	4822 410 20171
326	4822 273 10074
327	4822 276 10692
328	4822 532 51052
329	4822 462 40326

(A) silicon grease 5322 390 20019

-IC-	-TS-		3397,98	Saf res 5.6E	4822 111 30435
6550	NE542V	4822 209 80359	3411,12	WW res 0.33 E	4822 113 60119
6351,52			3417,18		
6365,66	BC558	4822 130 40941	3422	Saf res 39E	4822 111 50368
6353,54	BC547	4822 130 44257	3428	Saf res 3.9E	4822 111 30379
6355,56	BC548B	4822 130 40937	3251	Potm balance 2x22K	4822 102 30256
6357-60	BC637/638 pair	4822 130 41056	3260	Potm volume log 2x20+80K	4822 102 30257
6361-64	BD203/204	4822 130 41043	3281,87	Potm bass, treble	4822 102 30258
6251,52	BC548C	4822 130 44196		Semilog 2x47K	
6253,54	BC558	4822 130 40941	3291,92	Res CR37 110E	5322 116 54474
-D-			-C-		
6001	LED GL2PG1	4822 130 31049	2001	Elco 3300 μ F - 63V	4822 124 70268
6369	BY225	4822 130 30917	2500,01	Elco 2200 μ F - 40V	4822 124 20797
6373-78	BAW62	4822 130 30613	2566	Plate cap 22 nF	4822 122 30103
6386	BZX79/C27	5322 130 34379	2351,52,55	PPC - 47 nF 100V	4822 121 40336
-R-			2381,82	PPC 100 nF - 100V	4822 121 40334
3500,01	WW Vitrohm 2W 180R	4822 112 20087	2359,60		
3359,60	Met film res 301K	5322 116 54743	-Miscellaneous-		
3361,62	Met film res 37.4K	5322 116 54663	1008	Lamp 6V - 100 mA	4822 134 40326
3371,72	Met film res 6.81K	5322 116 54012	5001	Trafo	4822 146 20549
3391,92	Trimpot 2.2K	4822 100 10029	1351,51	Fuse 1.6 AT	4822 253 30024

Service
Service
Service

Service Manual

(GB)

For the service data of the above apparatus, see service documentation 22AH590/00, with the exception of the following item numbers from the mechanical parts list.

(F)

Pour ce qui est des données de service de l'appareil dont il est question ci-dessus, veuillez consulter la Documentation Technique du 22AH590/00 sauf pour ce qui concerne les pièces mécaniques ci-dessous.

(I)

Per quanto è dei dati di servizio per l'apparecchio di cui sopra, si prega di riferirsi alla Documentazione di Servizio dei 22AH590/00, eccetto per quanto concerne i pezzi meccanici qui sotto.

(DK)

Ved servicering af ovennævnte apparat se service manual for 22AH590/00 med undtagelse af følgende positionsnumre i den mekaniske reservedelsliste.

(SF)

Huoltotiedot yllä olevalle laitteelle löytyvät laitteen 22AH590/00 huolto-ohjeesta mekaanisen osaluettelon seuraavia osanumeroita lukuunottamatta.

(NL)

Voor de Service gegevens van bovengenoemd apparaat zie service documentatie 22AH590/00 m.u.v. de volgende onderdelen van de mechanische stuklijst.

(D)

Für die Service-Daten des obengenannten Geräts siehe die Service Dokumentation 22AH590/00 mit Ausnahme der nachstehenden Einzelteile in der mechanischen Stückliste.

(S)

Servicedata för ovensående apparat se servicemanual 22AH590/00 med undantag av följande reservdelar.

(N)

För ovennevnte apparats servicedata, se service manual for 22AH590/00 med unntak av følgende mekaniske deler.

22AH590/00

301	4822 426 60149
309	4822 426 50369
310	4822 413 51028
311	4822 413 51029
314	4822 413 51027