

Service  
Service  
**Service**



# Service Manual



**CONTENTS**

Technical Specification..... 1-1..1-4

Version Variation.....2-1

Safety Instruction.....2-2

Block diagram.....3-1

Wiring diagram .....3-2

Circuit Diagram

  Main + KEY board.....4-1

  Main board.....4-2

  Layout diagram

    MAIN BOARD Layout.....5-1 5-2

    KEY Layout.....5-3

    AMP BOARD Layout.....5-4 5-5

  Explode Drawing.....6-1

**CLASS 1  
LASER PRODUCT**

©Copyright 2012 Philips Consumer Electronics B.V. Eindhoven, The Netherlands  
All rights reserved. No part of this publication may be reproduced, stored in a retrieval system or transmitted, in any form or by any means, electronic, mechanical, photocopying, or otherwise without the prior permission of Philips.

Published by LZ 1207 Subject to modification

3141 785 37410

**Version 1.0**



**PHILIPS**

## TECHNICAL SPECIFICATION

<b>General description:</b>										1
<b>LIFETIME : 5 YEARS (ACC. TO UAN-D1611)</b>										2
<b>PERFORMANCE CLASSES :</b>										
	TUNER	SUPPLY, AMPLIFIER	SPEAKER BOXES	RECORDER	CLOCK	CD	DCC	TELEPHONE	REC. PLAYER	
I	x	x								3
II						x				4
III										5
<b>SAFETY REQUIREMENTS:</b>										
EN 60065 (IEC 65) CE , UL approbation for version 37										6
<b>RADIATION, IMMUNITY REQUIREMENTS: (EMC/FCC)</b>										
EN55013, EN55020 .FOR VERSION 05/12/79/98 FCC FOR /37 VERSION										7
<b>CLIMATIC REQUIREMENTS: (acc. to UAN-D1590)</b>										
All climates: -10 °C till +50 °C (Functional); Set has to be pre-conditioned for 2 hour, except CD function										8
For all measurements: 25 °C										9
<b>POWER SUPPLY:</b>										
<b>MAINS (AC) operation</b>					<b>DC (int. or ext.) operation / Backup Buffer</b>					
Voltage selection:		See table below			Battery type: AA, C-cell x 6; nom.: 9V minimum operating voltage : 6.3V for CD					10
Selection:		See table below			Lifetime: CD ≥ 3.8 hours  (400mW, AA 金霸王 alkaline batteries)					11
Frequency:		See table below			External DC: No					12
<b>POWER CONSUMPTION:</b>										
Standby: ≤0.5W typ. 3 W (power off mode)					Standby: 0nW (power off mode)					13
Maximum: 6 W					Maximum:					14
<b>General:</b>										
Q and R according to production division rules :					Q ≤ 1% (Major), Q ≤ 4% (Minor)					
Measured according to:					R ≤ 3% (CE52)					
<b>DERIVED VERSIONS:</b>									<b>APPROBATION</b>	
Version	AC Voltage/ Frequency on typeplate		Safety Tolerance							15
12	100-240VAC/ 50/60HZ		+/-10%							
05	100-240VAC/ 50/60HZ		+/-10%							
37	120VAC/ 60HZ		+/-10%							
<b>REMARKS:</b>										
For operation and thermal stability test : AC/DC SWITCHIG ADAPTER INPUT:100-240VAC										16

## TECHNICAL SPECIFICATION

### SUPPLY, AF-AMPLIFIER & LOUDSPEAKER PART:

<b>TECHNICAL description:</b>					
	Power supply	Tone Control	AF-Amplifier	Loudspeaker	
Active components			CD2822		1
Passive components				1 W, 8ohm	2
					3
<b>GENERAL part:</b>					
Headphone type	None				4
Loudspeaker filter, high pass	None				5
Loudspeaker filter, low pass	None				6
Power stage protection	AC – NO; DC - NO; Temperature – YES; Short circuit – NO				7
Public address	No				8
<b>INDICATORS:</b>					
Output power or VU-meter	No	:	digits:		9
Frequency response	No	:	digits:		10
Low power (battery)	No				11
<b>ELECTRICAL DATA:</b>					
<b>TONE/EQUALIZER/DBB</b>					
			Balance control	No	12
			Mechanical noise (ISO 1996)		13
			Noise overall (ISO)		14
			Channel difference at 50mW		15
			Hum (vol.max.-20dB to vol.min.)	Limit: 250 nW	16
			Residual noise (volume minimum)	Limit: 100 nW	17
Input sens.: Nom.			500mV	mV	
for 50mW Limit:				mV	
Line outp.: Nom.				mV	
voltage Limit:				mV	
<b>OUTPUT POWER:</b>					
Mains operation:	D=10%	1W		Limit: -	18
Battery operation:	D=10%	1W		Limit: -	19
Music power (MPO) / Peak-MPO (PMPO):				(acc. to DIN45324)	20
Short term maximum output power:	-1*1.2W			(acc. to IEC 60268-15)	21
Long term maximum output power:	-			(acc. to IEC 60268-15)	22
Headphone output voltage/power:					23
Bandwidth FTC – 1dB at:	n.a.			(acc. to FTC/16/1/D/432)	24
Bandwidth DIN – 3dB at:	-			(acc. to IEC 60268-15)	25
Frequency response at Vol. max – 20dB:	typ. 60Hz to 16kHz (±3dB)				26
DBB raise level	4db at125hz vol max-20db			Disc SBC429 Track 12	
<b>LOUDSPEAKER (output):</b>					
Low pass crossover frequency:	-	kHz	tolerance:	Hz	27
High pass crossover frequency:	-	kHz	tolerance:	Hz	28
Short term maximum output power:	-	W (acc. to IEC 60268-15)			29
Long term maximum output power:	-	W (acc. to IEC 60268-15)			30
Frequency response at:	-	Hz		kHz	31
<b>REMARKS:</b>					
27 : Measured in Tuner mode; 28: CD or LINE IN mode.					32

## TECHNICAL SPECIFICATION

### CD-PART: (SANYO DA11VF CD MECHANISM) (BALL type)

<b>Technical description:</b>					
	Input	Output	Motor/control	Logic control	
Active components			TA2157F	TC94A29FAG-018	1
Passive components					2
	Signal processing	D/A converter	HF-preamplifier	Servo processor	3
Active components	CD: TC94A29FAG-018	CD: TC94A29FAG-018	D9258PH		4
Passive components					5
					6
<b>Indicators/Display/Keys:</b>					
Display:					7
Keys: Slide switches & tact switches					8
<b>Playability:</b> (acc. to AHR-82-Gbu-00-4201)					
	Limit	Typical	Testdisc		9
Wedge	600 $\mu$ m	900 $\mu$ m	TNO 7,9 of SBC 444A (7104 099 24990)		10
Eccentric	150 $\mu$ m	200 $\mu$ m	TNO 1,24 of 200 $\mu$ m disc (7104 099 24960)		11
Fingerprint	No audible defect		TNO 11 of Subchassis 8A		12
Black dot	500 $\mu$ m	600 $\mu$ m	TNO 13, 14 of SBC 444A (7104 099 24990)		13
Double black dot	No failure		TNO 9 of Subchassis 8A		14
Skew 0.6 deg, 8cm	No audible defect		TNO 1,6 of 0.6deg C, 8cm skew disc		15
Bad HF track	No audible defect		TNO 8 of Subchassis 8A		16
Heavy fingerprint	No track jumps/plops		TNO 10 of Subchassis 8A		17
Maximum diameter	No audio effect		Last TNO of Subchassis 8A		18
Thick disc	No failure		Thick test disc		19
Thin disc	No failure		Thin test disc		20
Vertical deviation disc	No failure		TNO 1,16 of ABEX TCD-732RA (VDD +/- 0.5mm)		21
Playback position	Horizontal, Normal position (Set is located on a flat surface, floor)				22
- Playback of above mentioned tracks possible without track loss or audible defects.					23
- This unit can playback CD-R or CD-RW discs.					
<b>Shock resistance:</b> (acc. to AR 13-A6-CD-068)					
$\pm$ Z axis	5 G				24
$\pm$ X or Y axis	5 G				25
<b>Acoustical noise:</b>					
Mode: Play/Pause	35 dBA max. (45 dbA in Search mode)				26
Mode: Jump (Next)	45 dBA max.				27
<b>Acoustic feedback:</b>	Acoustical feedback is not allowed.	Test disc TNO 2,6,11,18,19,20 of SBC444 , 10% THD o/p , DBB on			
<b>AUDIO part:</b> (Measured with Audio Signals Disc-1, 7104 078 04911 on Speakers or Headphone socket with nom. load)					
	Typ.	Limit			
Output level (TNO1)	3.1V				28
SNR unwd.	60 dB	50 dB			29
SNR wtd. dBA	62 dBA	57 dBA			30
Crosstalk (1kHz) TNO 67, 71	35 dB	30 dB			31
Crosstalk (other range) TNO 66 – 73 (16 TO 16kHz)	35 dB	30 dB			32
Frequency response Vol.max.-20dB (DBB on)	-1.5dB -1dB	$\pm$ 2dB	at 100Hz at 10kHz		33
Frequency response (+/- 3dB)	100 10k	80 Hz 12.5 kHz			34
THD (1kHz, 0 dB)	1%	1.5 %			35
THD (overall frequency response range, 0dB)	2 %	3 %			36
Channel difference	0				37
Frequency accuracy	-	+/-0.5 %			38
De-emphasis	15 $\mu$ s / 50 $\mu$ s Switchable via Subcode information				39

**TECHNICAL SPECIFICATION**

**REMARKS:**

- Amplification reserve for CD = +2dB ( $\pm 2$ dB); Ref. Level for CD is a 1kHz, -6dB (Audio signal disc 1, track 35)
- 

40

CD-RW Test discs :

- |       |                      |       |
|-------|----------------------|-------|
| ( A ) | Audio signal disc 1  | ( N ) |
| ( B ) | SBC444A              | ( O ) |
| ( G ) | Burn-in SBC 442      | ( P ) |
| ( K ) | Printed CD-RW        | ( Q ) |
| ( L ) | Low reflect CD-RW    | ( R ) |
| ( M ) | High reflected CD-RW | ( S ) |
|       |                      | ( T ) |

Description		condition (test disc)		Noraml	limit		
<b>CD-RW playability</b>							
1	Fingerprint	"K" TNO 18		No audible disturbance			
2	Black dot	"K" 13, 17	um	800	400		
3	Low reflection	"L"		No audible disturbance			
4	High reflection	"M"		Startup			



## 2.0 SAFETY INSTRUCTIONS

**(GB)** WARNING

All ICs and many other semi-conductors are susceptible to electrostatic discharges (ESD). Careless handling during repair can reduce life drastically. When repairing, make sure that you are connected with the same potential as the mass of the set via a wrist wrap with resistance. Keep components and tools also at this potential.

**ESD****(NL)** WAARSCHUWING

Alle IC's en vele andere halfgeleiders zijn gevoelig voor electrostatische ontladingen (ESD). Onzorgvuldig behandelen tijdens reparatie kan de levensduur drastisch doen verminderen. Zorg ervoor dat u tijdens reparatie via een polsband met weerstand verbonden bent met hetzelfde potentiaal als de massa van het apparaat. Houd componenten en hulpmiddelen ook op ditzelfde potentiaal.

**(F)** ATTENTION

Tous les IC et beaucoup d'autres semi-conducteurs sont sensibles aux décharges statiques (ESD). Leur longévité pourrait être considérablement écourtée par le fait qu'aucune précaution n'est prise à leur manipulation. Lors de réparations, s'assurer de bien être relié au même potentiel que la masse de l'appareil et enfilez le bracelet serti d'une résistance de sécurité. Veiller à ce que les composants ainsi que les outils que l'on utilise soient également à ce potentiel.

**(D)** WARNUNG

Alle ICs und viele andere Halbleiter sind empfindlich gegenüber elektrostatischen Entladungen (ESD). Unsorgfältige Behandlung im Reparaturfall kann die Lebensdauer drastisch reduzieren. Veranlassen Sie, dass Sie im Reparaturfall über ein Pulsarmband mit Widerstand verbunden sind mit dem gleichen Potential wie die Masse des Gerätes. Bauteile und Hilfsmittel auch auf dieses gleiche Potential halten.

**(I)** AVVERTIMENTO

Tutti IC e parecchi semi-conduttori sono sensibili alle scariche statiche (ESD). La loro longevità potrebbe essere fortemente ridotta in caso di non osservazione della più grande cauzione alla loro manipolazione. Durante le riparazioni occorre quindi essere collegato allo stesso potenziale che quello della massa dell'apparecchio tramite un braccialetto a resistenza. Assicurarsi che i componenti e anche gli utensili con quali si lavora siano anche a questo potenziale.

**(GB)**

Safety regulations require that the set be restored to its original condition and that parts which are identical with those specified, be used.

"Pour votre sécurité, ces documents doivent être utilisés par des spécialistes agréés, seuls habilités à réparer votre appareil en panne".

**(NL)**

Veiligheidsbepalingen vereisen, dat het apparaat bij reparatie in zijn oorspronkelijke toestand wordt teruggebracht en dat onderdelen, identiek aan de gespecificeerde, worden toegepast.

**(F)**

Les normes de sécurité exigent que l'appareil soit remis à l'état d'origine et que soient utilisés les pièces de rechange identiques à celles spécifiées.

**(GB)** Warning !

Invisible laser radiation when open. Avoid direct exposure to beam.

**(D)**

Bei jeder Reparatur sind die geltenden Sicherheitsvorschriften zu beachten. Der Originalzustand des Geräts darf nicht verändert werden; für Reparaturen sind Original-Ersatzteile zu verwenden.

**(S)** Varning !

Osynlig laserstrålning när apparaten är öppnad och spårren är urkopplad. Betrakta ej strålen.

**(I)**

Le norme di sicurezza esigono che l'apparecchio venga rimesso nelle condizioni originali e che siano utilizzati i pezzi di ricambio identici a quelli specificati.

**(SF)** Varoitus !

Avatussa laitteessa ja suojalukituksen ohitettaessa olet alltiina näkymättömälle laserisäteilylle. Älä katso säteeseen!

"After servicing and before returning set to customer perform a leakage current measurement test from all exposed metal parts to earth ground to assure no shock hazard exist. The leakage current must not exceed 0.5mA."

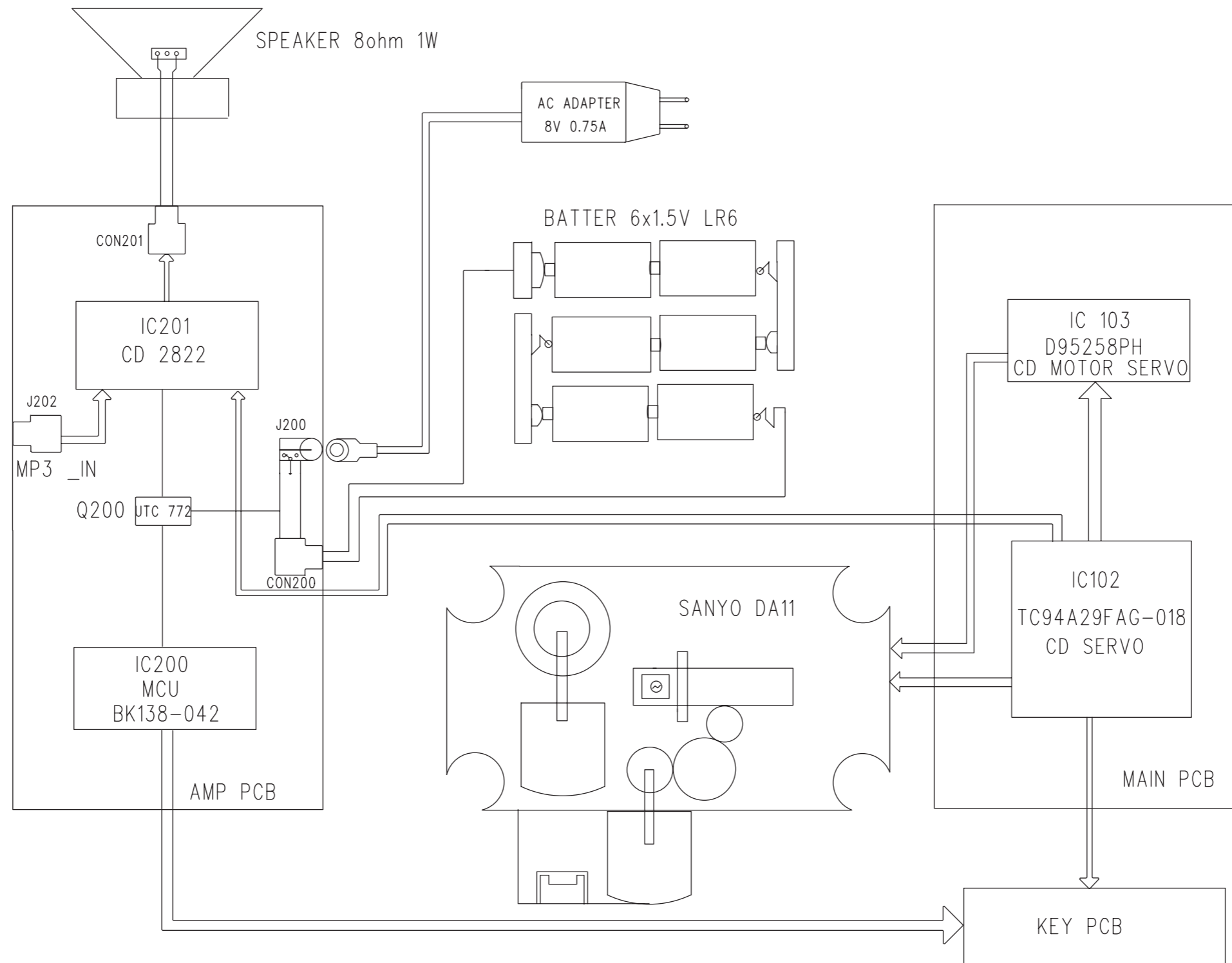
**DK** Advarsel !

Usynlig laserstrålning ved åbning når sikkerhedsafbrydere er ude af funktion. Undgå udsættelse for strålning.

Caution: These servicing instructions are for use by qualified service personnel only.

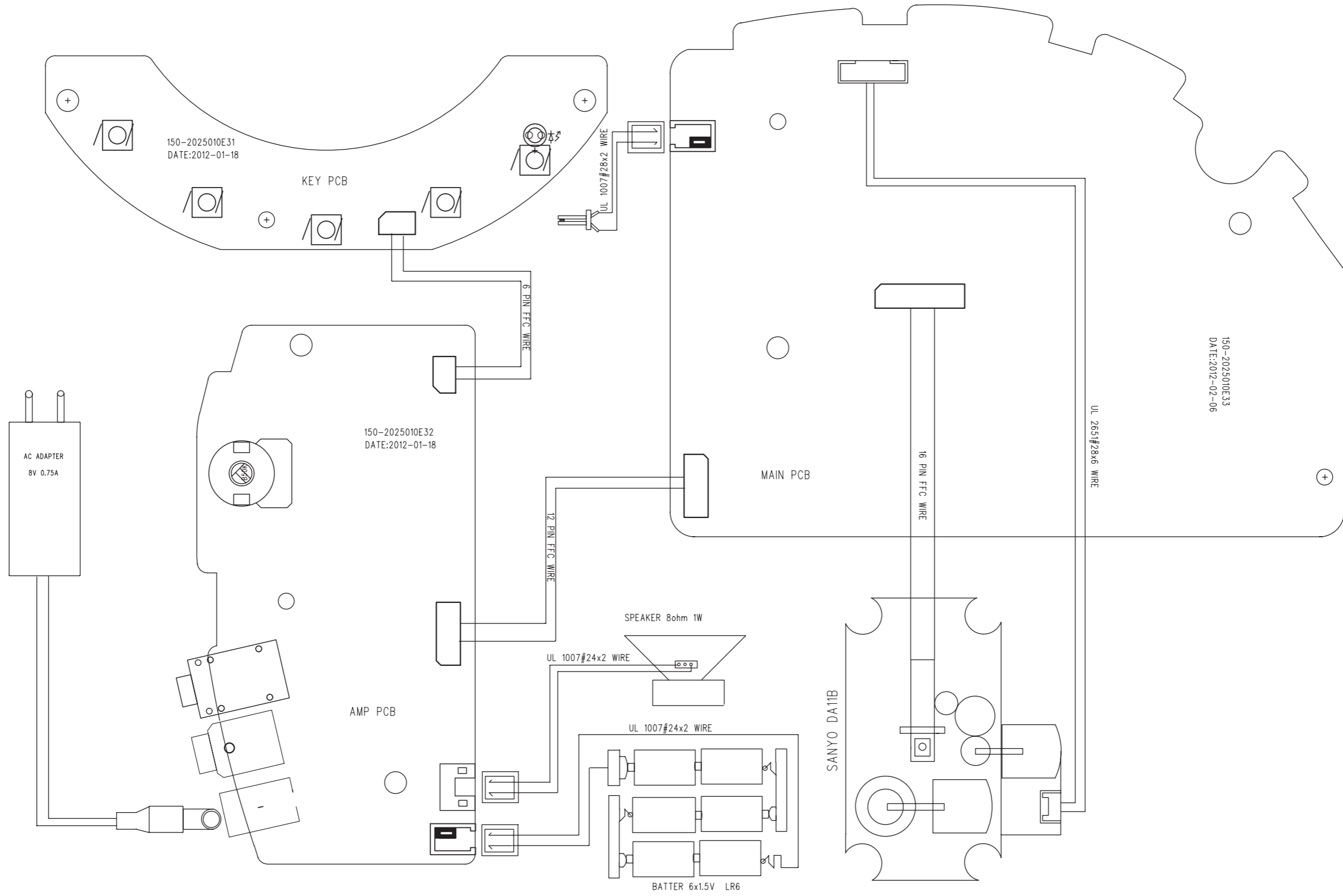
To reduce the risk of electric shock do not perform any servicing other than that contained in the operating instructions unless you are qualified to do so.

SET BLOCK DIAGRAM

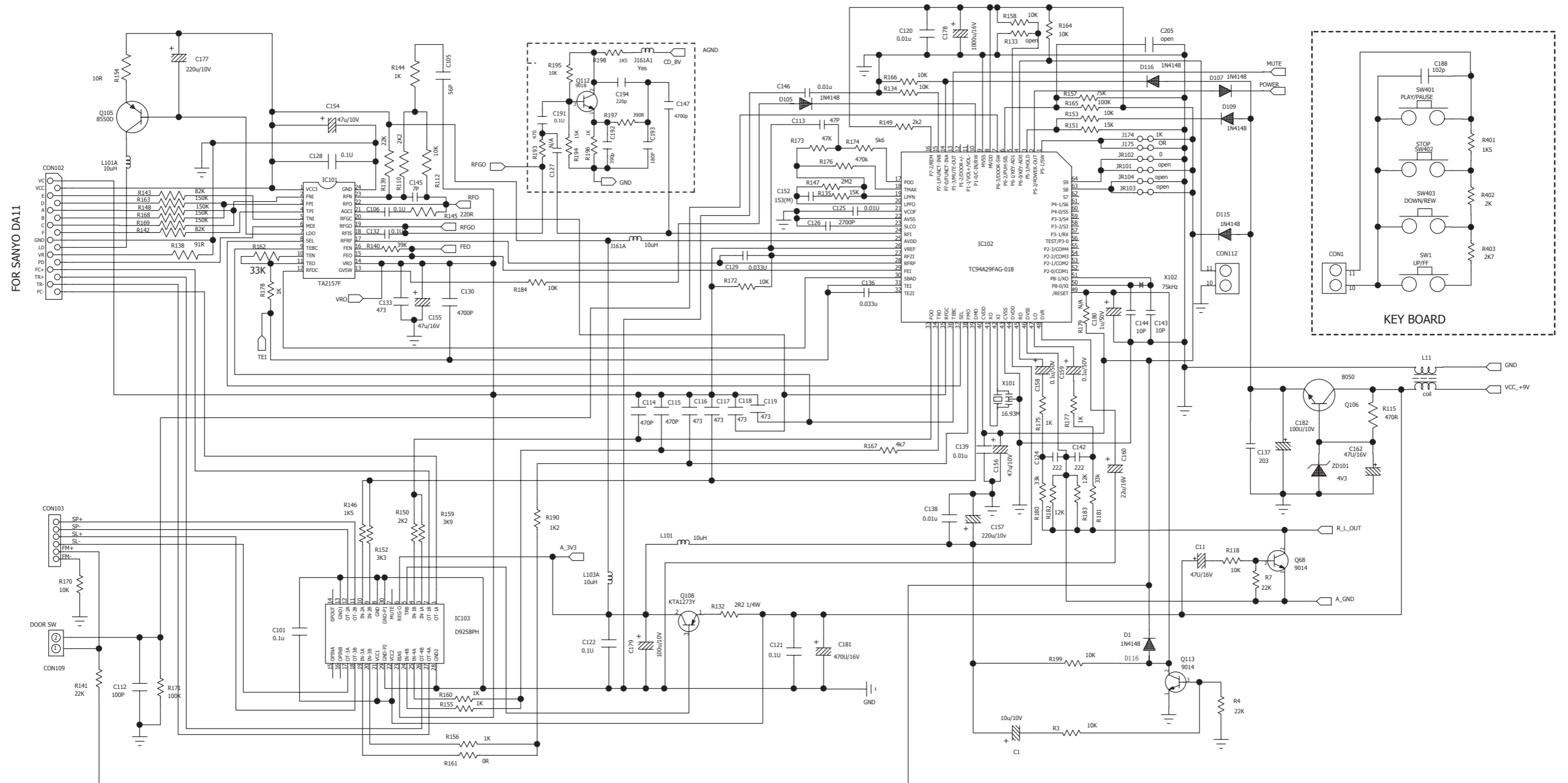




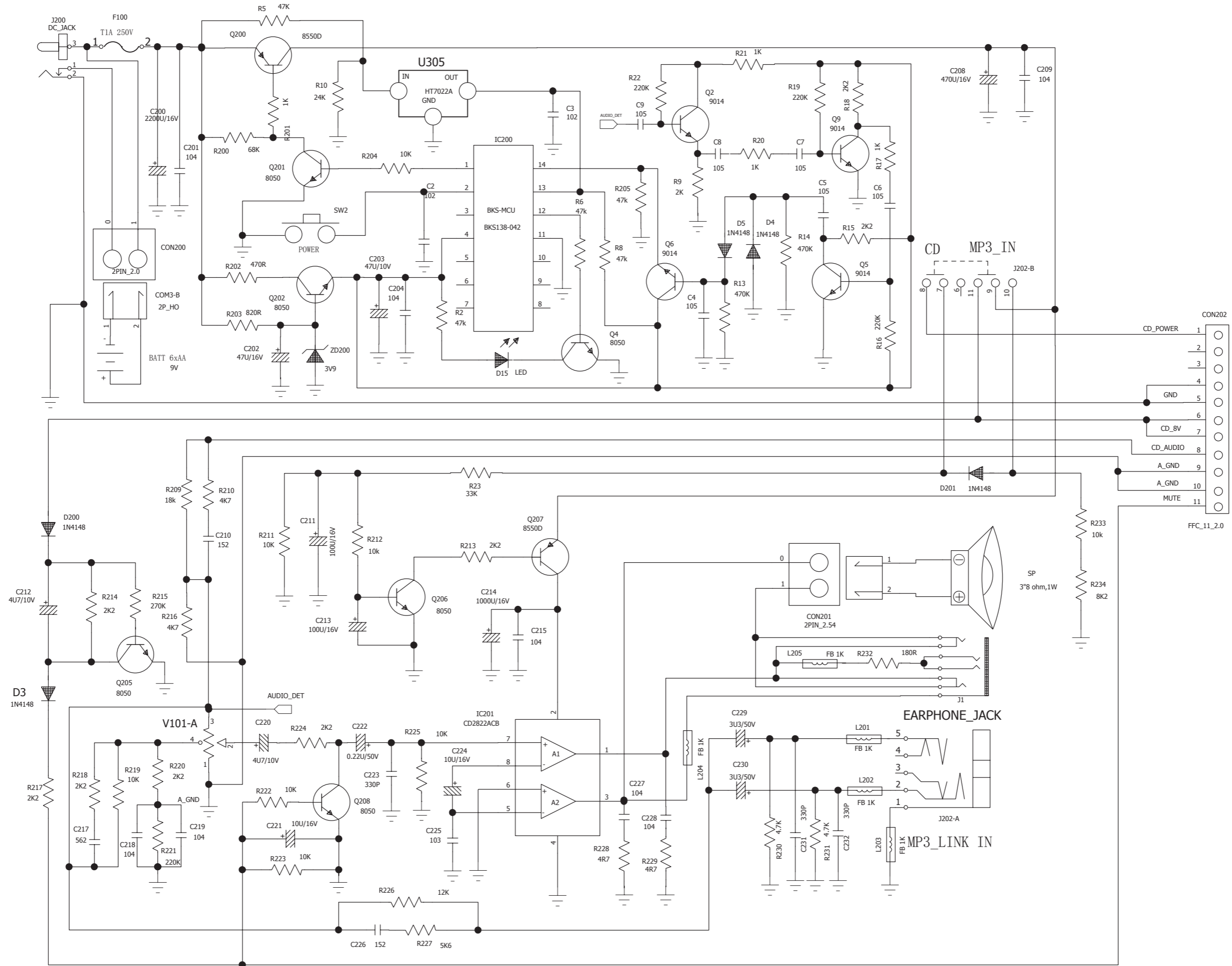
# WIRE CONNECT DIAGRAM



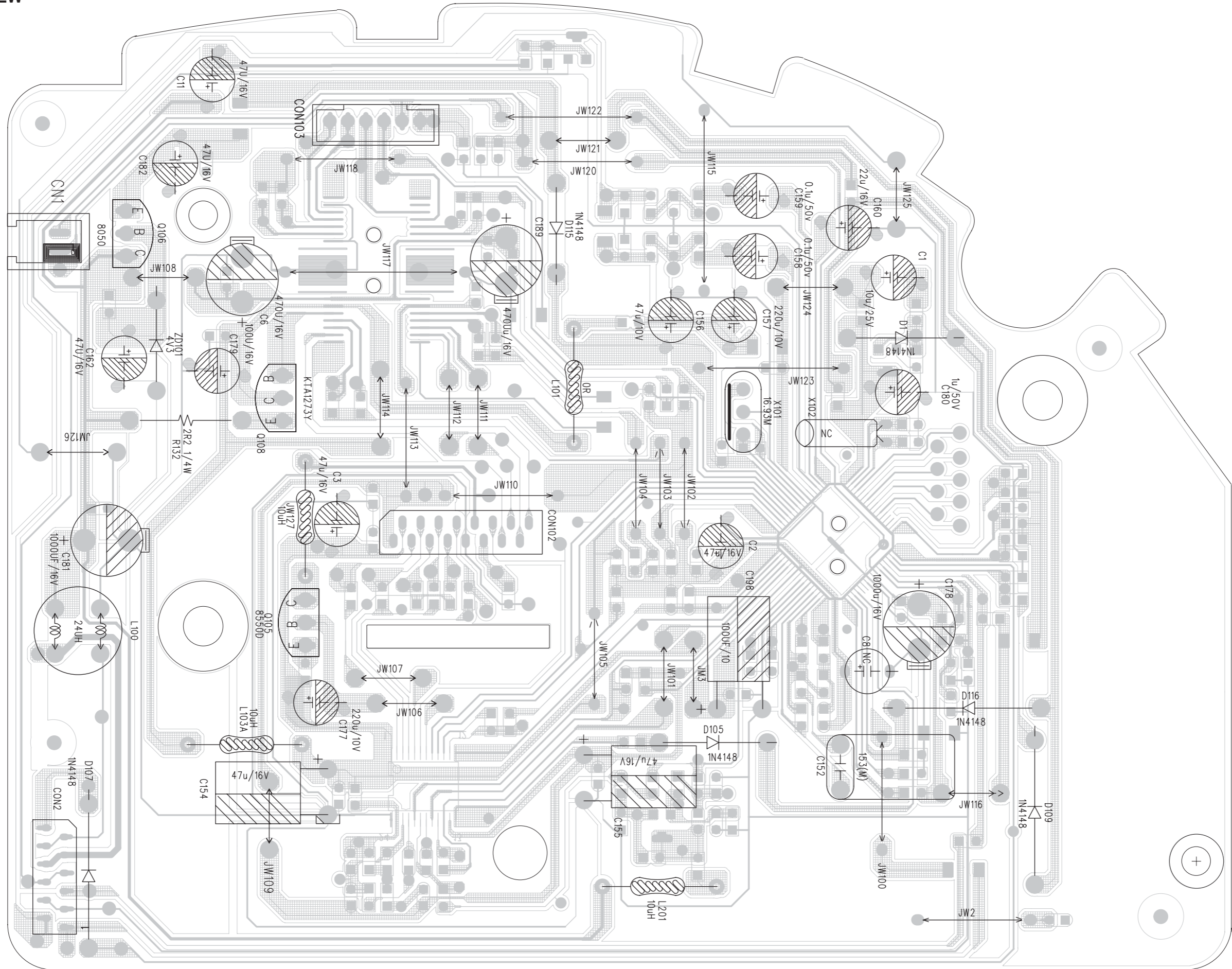
# CIRCUIT DIAGRAM -MAIN + KEY BOARD PART1



# CIRCUIT DIAGARM -MAIN BOARD PART 2



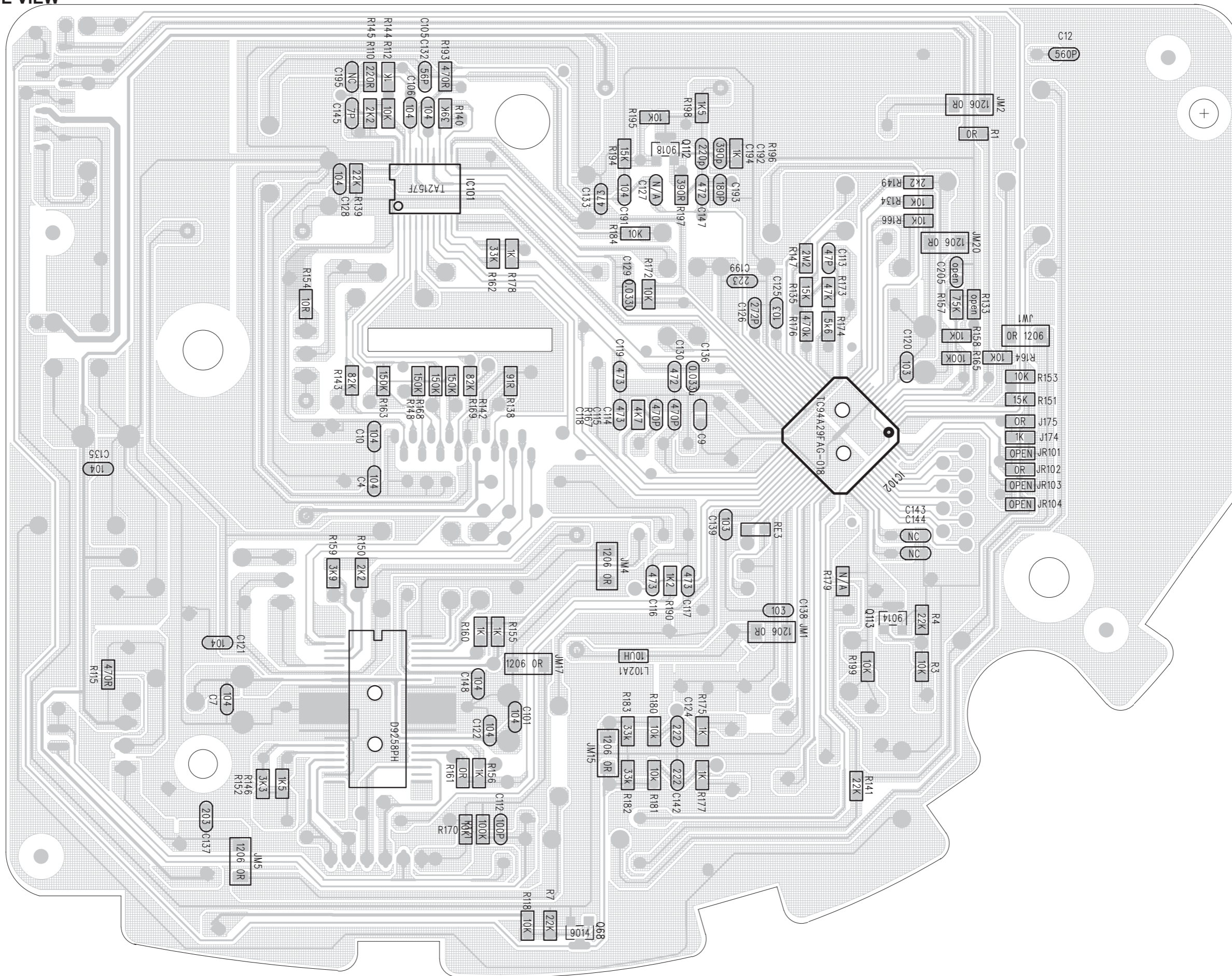
LAYOUT DIAGARM -MAIN BOARD  
TOP SIDE VIEW



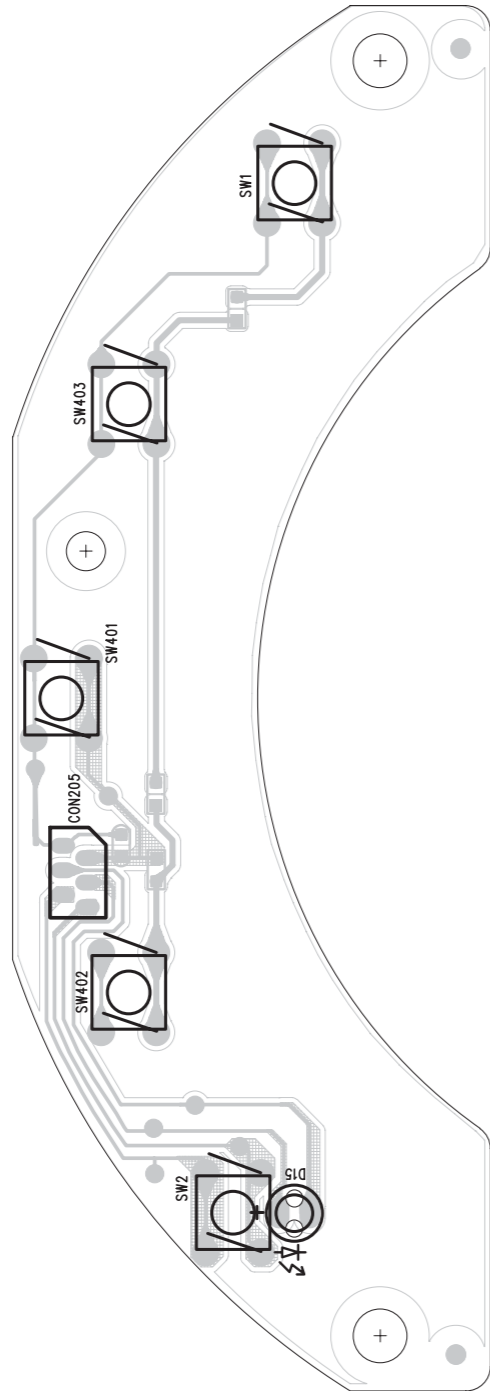
LAYOUT DIAGRAM - MAIN BOARD  
BOTTOM SIDE VIEW

5-2

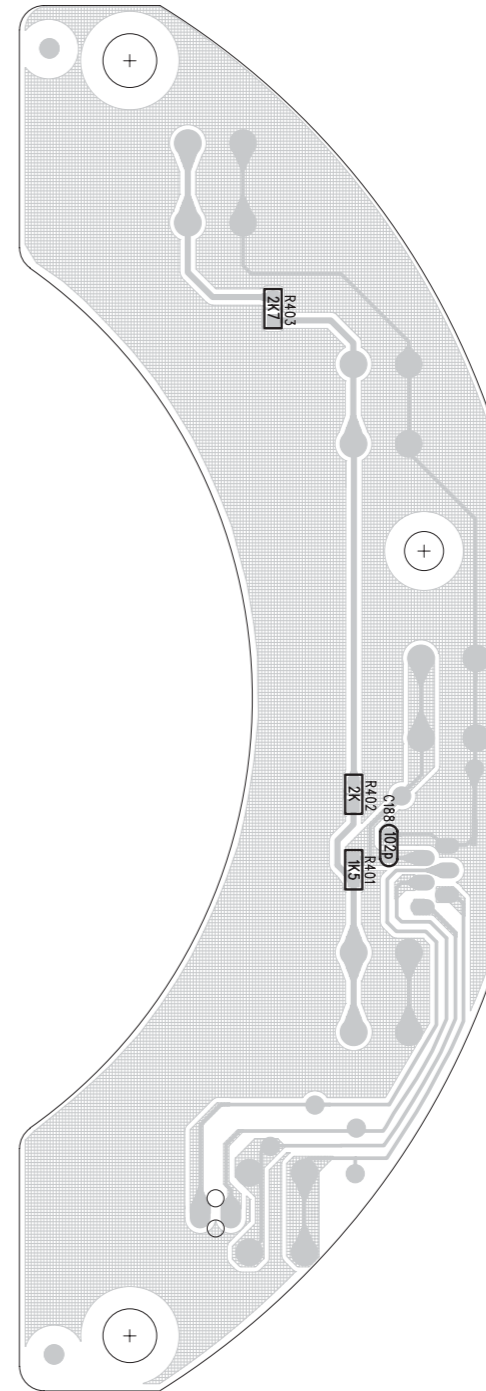
5-2



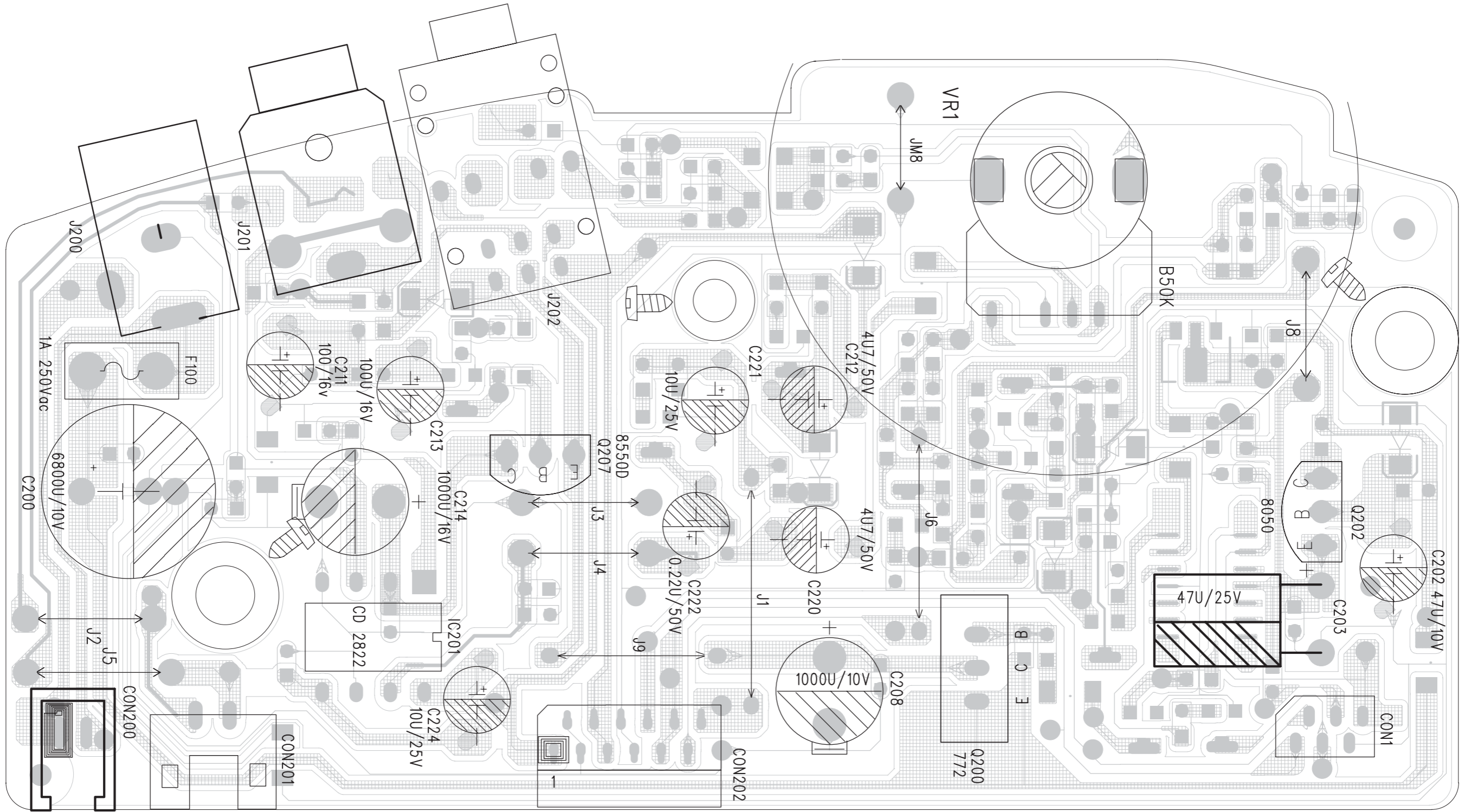
LAYOUT DIAGARM -KEY BOARD  
TOP VIEW



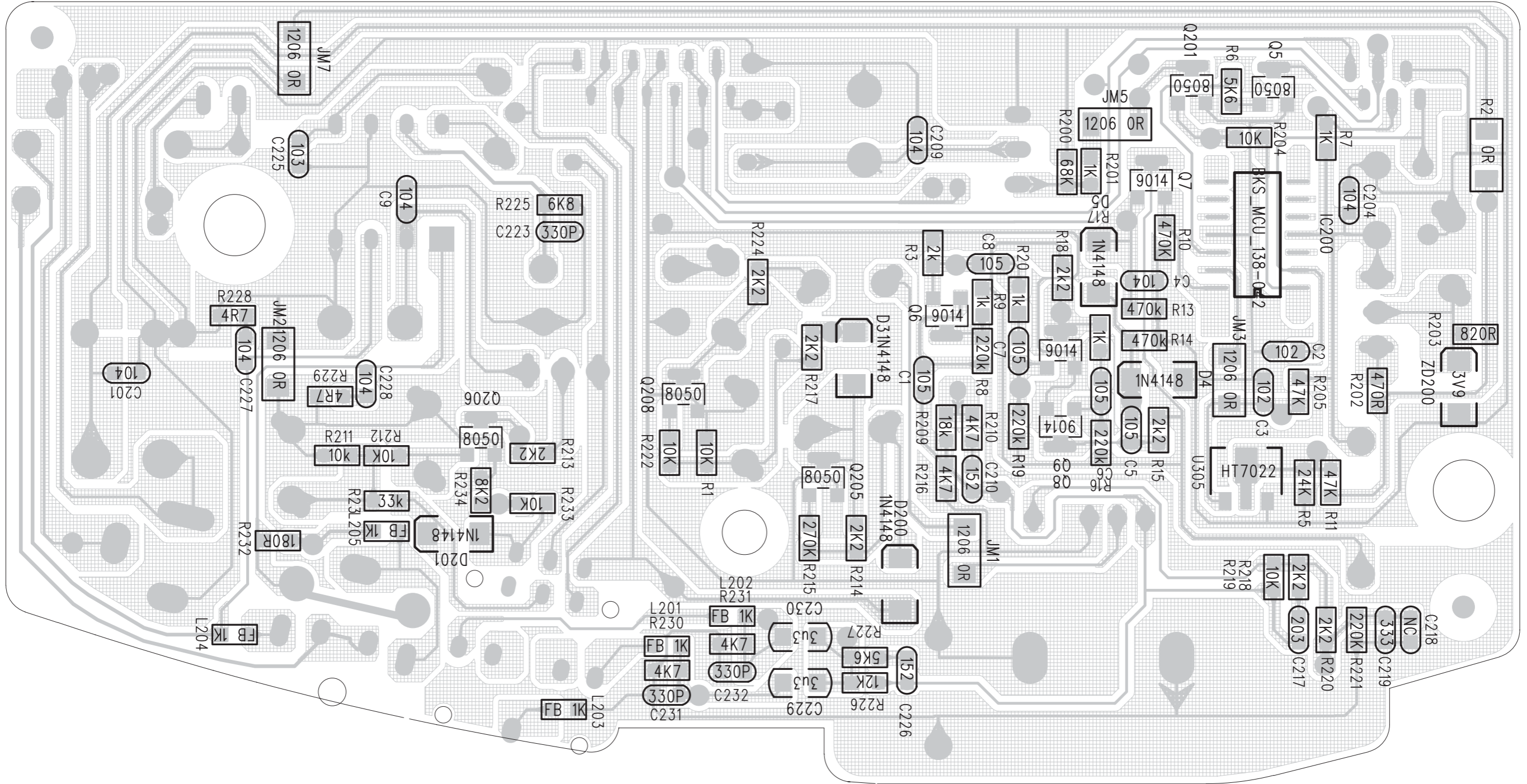
LAYOUT DIAGARM -KEY BOARD  
BOTTOM VIEW



LAYOUT DIAGARM -AMP BOARD  
TOP SIDE VIEW



LAYOUT DIAGARM -AMP BOARD  
BOTTOM SIDE VIEW





# EXPLODED VIEW DIAGRAM

