

PHILIPS

Model L2G2IT

General Description: Six-transistor (plus diode), two-waveband portable receiver with sockets for car aerial and earpiece. A transistor detector (T_3) with crystal diode (X_1) A.G.C. rectifier. Also known as **Model 221T**.

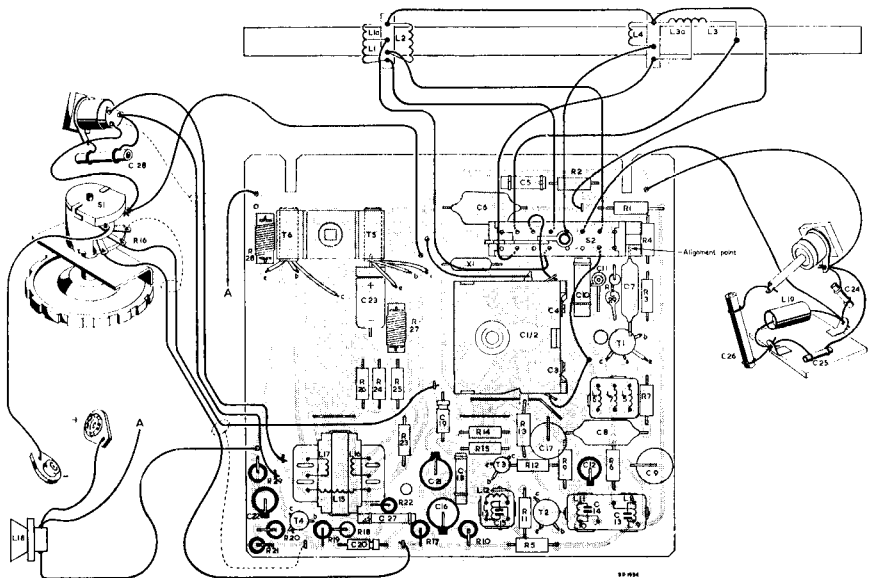
Power Supply: 9-volt battery (PP7 or equivalent). No-signal consumption about 18 mA.

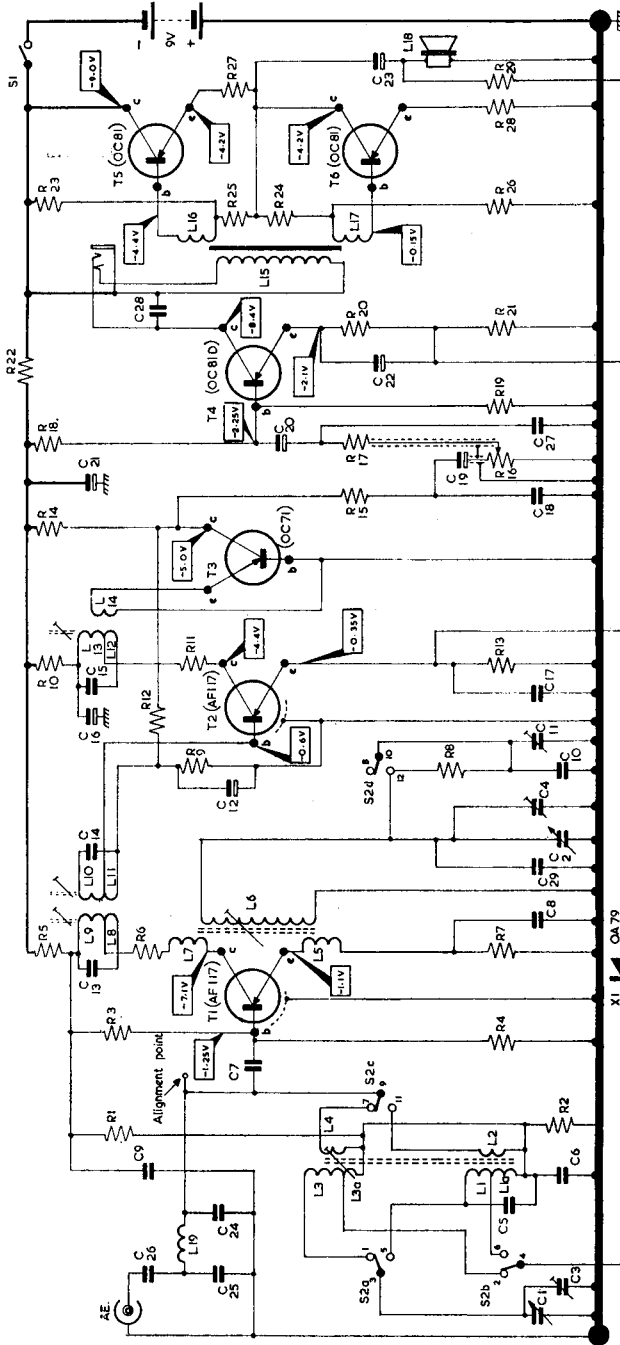
Wavebands: M.W. 187-555m.; L.W. 1215-2000 m.

Transistors: ($T_1, 2$) AF117; (T_3) OC71; (T_4) OC81D; ($T_5, 6$) matched OC81. Diode (X_1) OA70.

Alignment Frequencies: I.F. 470 kc/s. ($L_{12/13}, L_{10/11}, L_8/9$). M.W. 537 kc/s. ($L_5/6/7$); 1610 kc/s. (C_4); 623 kc/s. ($L_3/4$); 1400 kc/s. (C_3). L.W. 145.5 kc/s. (C_{11}); 180 kc/s. (L_1/L_2).

Dismantling: *To release chassis.* Place set face up on soft surface, pull off tuning knob and release pointer by springing apart retaining collar with screwdriver. Turn set over, release two captive screws and remove back. Withdraw chassis retaining screws (2) and turn chassis over towards handle. *To replace chassis.* Turn gang to maximum and align lever of wavechange control to operating arm on W/C switch. Turn chassis over into position and replace fixing screws. Place pointer on tuning spindle with arms parallel to cabinet top edge, then push it down to lower section of shaft. Fit tuning knob, battery and cabinet back.





CIRCUIT DIAGRAM—PHILIPS MODEL L2G21T

Capacitors

- C5 56 pF. (1%)
- C6 0.1
- C7 8,200 pF.
- C8 18,000 pF.
- C9 0.15
- C10 180 pF.
- C11 100 pF.
- C12 10
- C13 200 pF.
- C14 200 pF.
- C15 0.1 pF. (1%)
- C16 160
- C17 0.15
- C18 3,900 pF.
- C19 3.2
- C20 3.2
- C21 160
- C22 100
- C23 160
- C24 15 pF. (5%)
- C25 15 pF. (5%)
- C26 10,000 pF.
- C27 4,700 pF.
- C28 10,000 pF.
- C29 8 pF. or 3 pF.

Resistors

- R1 10
- R2 100
- R3 33k
- R4 6.8k
- R5 100
- R6 390
- R7 18k
- R8 1k
- R9 15
- R10 10k
- R11 2.2k
- R12 180
- R13 47k
- R14 27k
- R15 47k
- R16 50k (log.)
- R17 15
- R18 10
- R19 10
- R20 10
- R21 10
- R22 10
- R23 10
- R24 10
- R25 10
- R26 10
- R27 10
- R28 10
- R29 10

All voltages taken with respect to chassis using a V.V. meter or approx. Resistor values are given in ohms, kilohms, megohms, and varied from print side.



HC switch shown in MH pos. and varied from print side.

Coils

- L1 100 pF.
- L2 100 pF.
- L3 180 pF.
- L4 100 pF.
- L5 100 pF.
- L6 100 pF.
- L7 100 pF.
- L8 100 pF.
- L9 100 pF.
- L10 100 pF.
- L11 100 pF.
- L12 100 pF.

50165