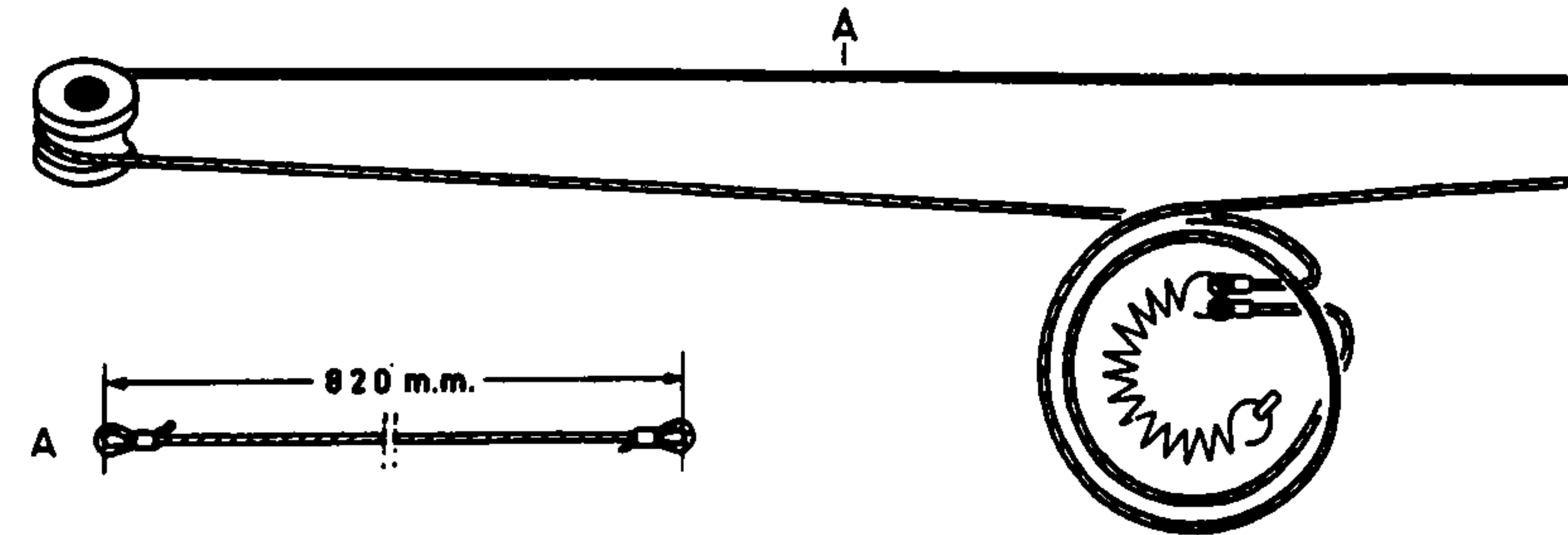
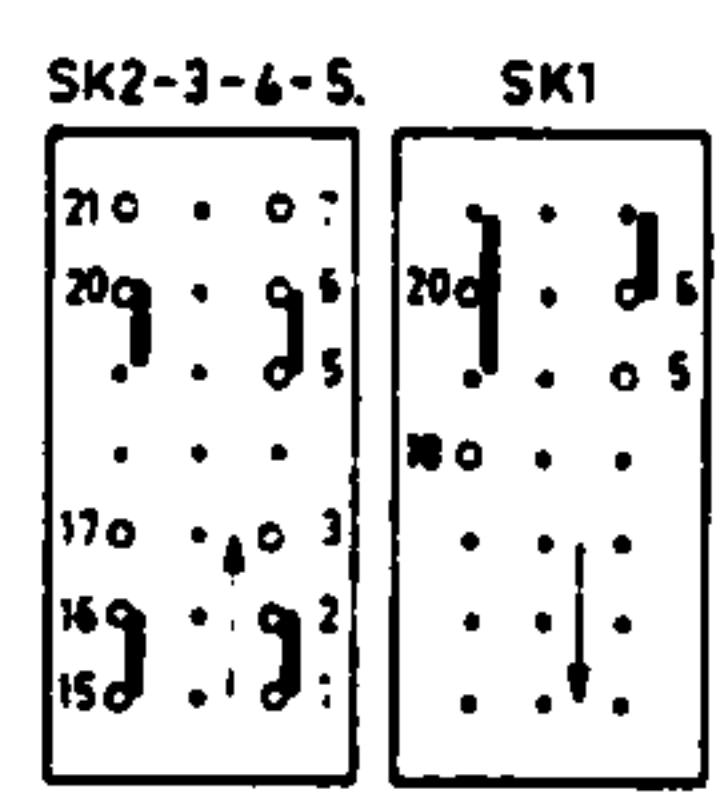
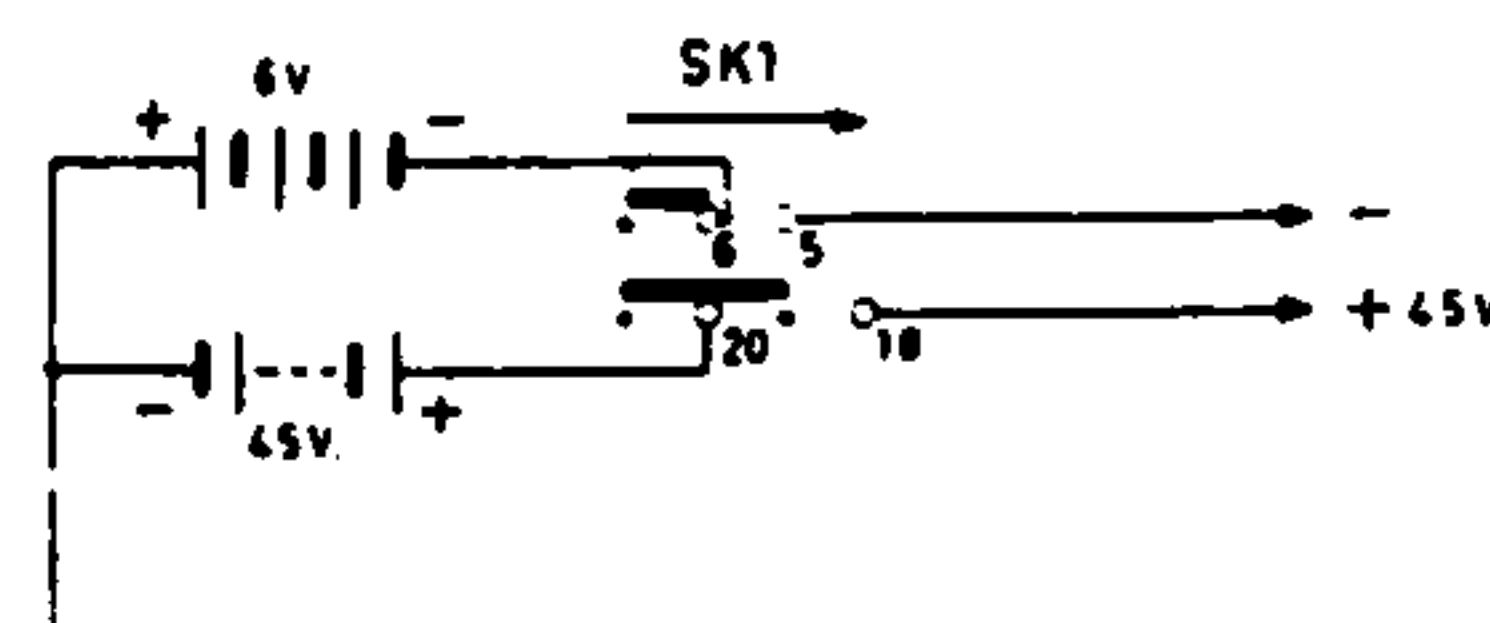
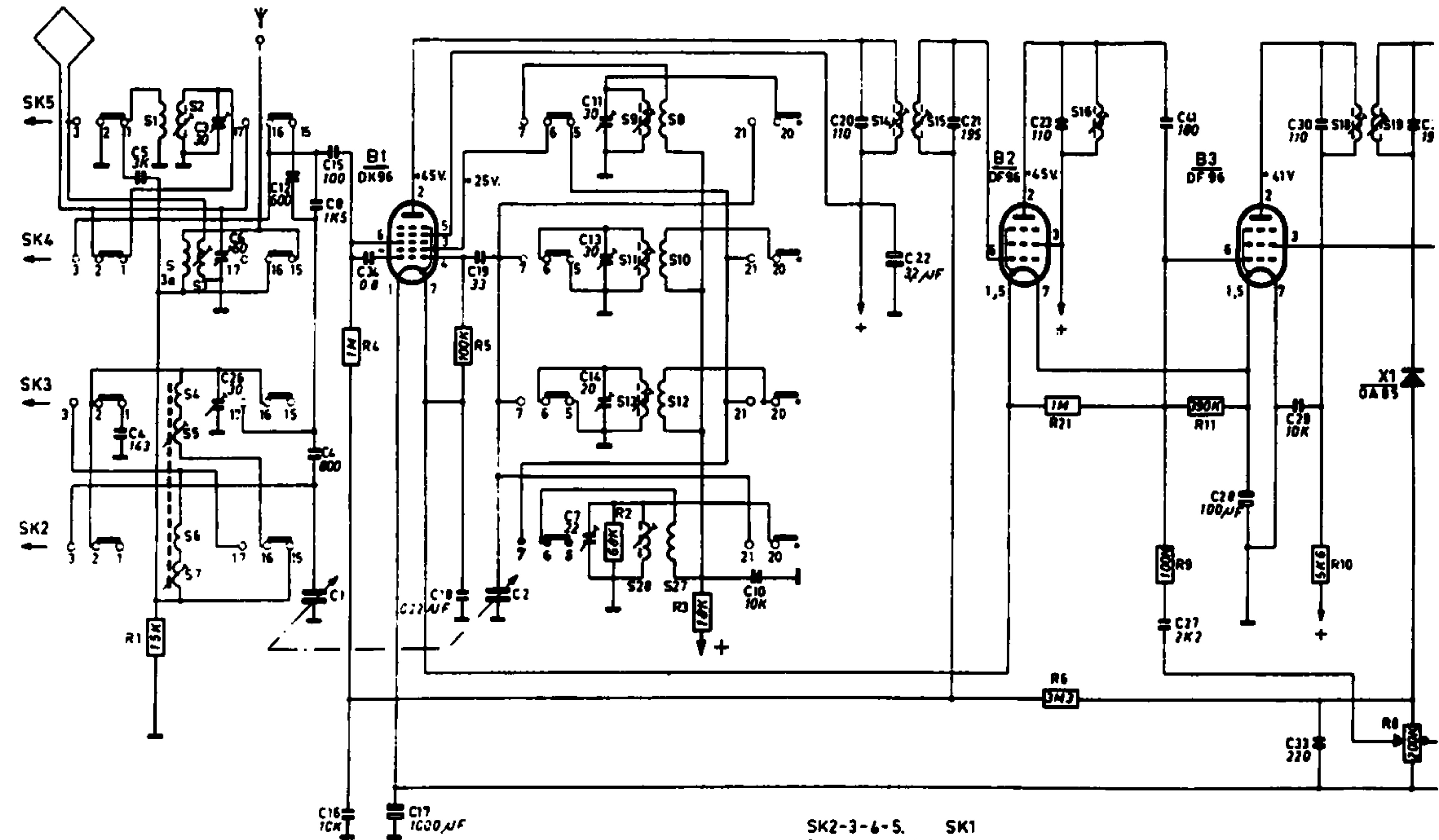
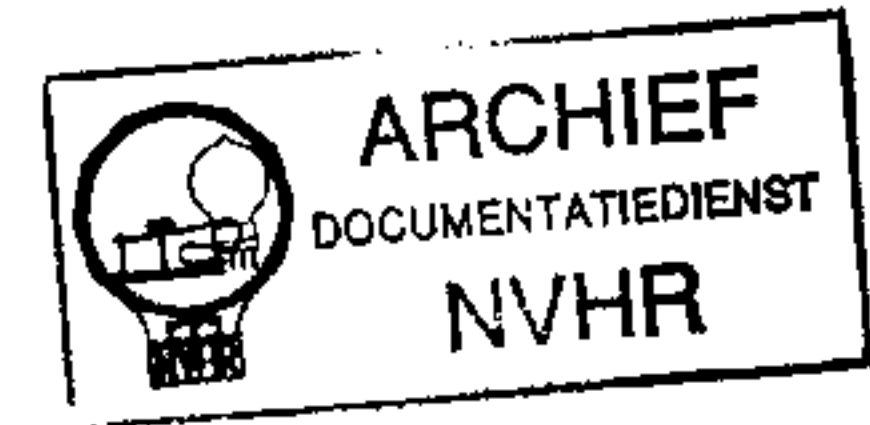
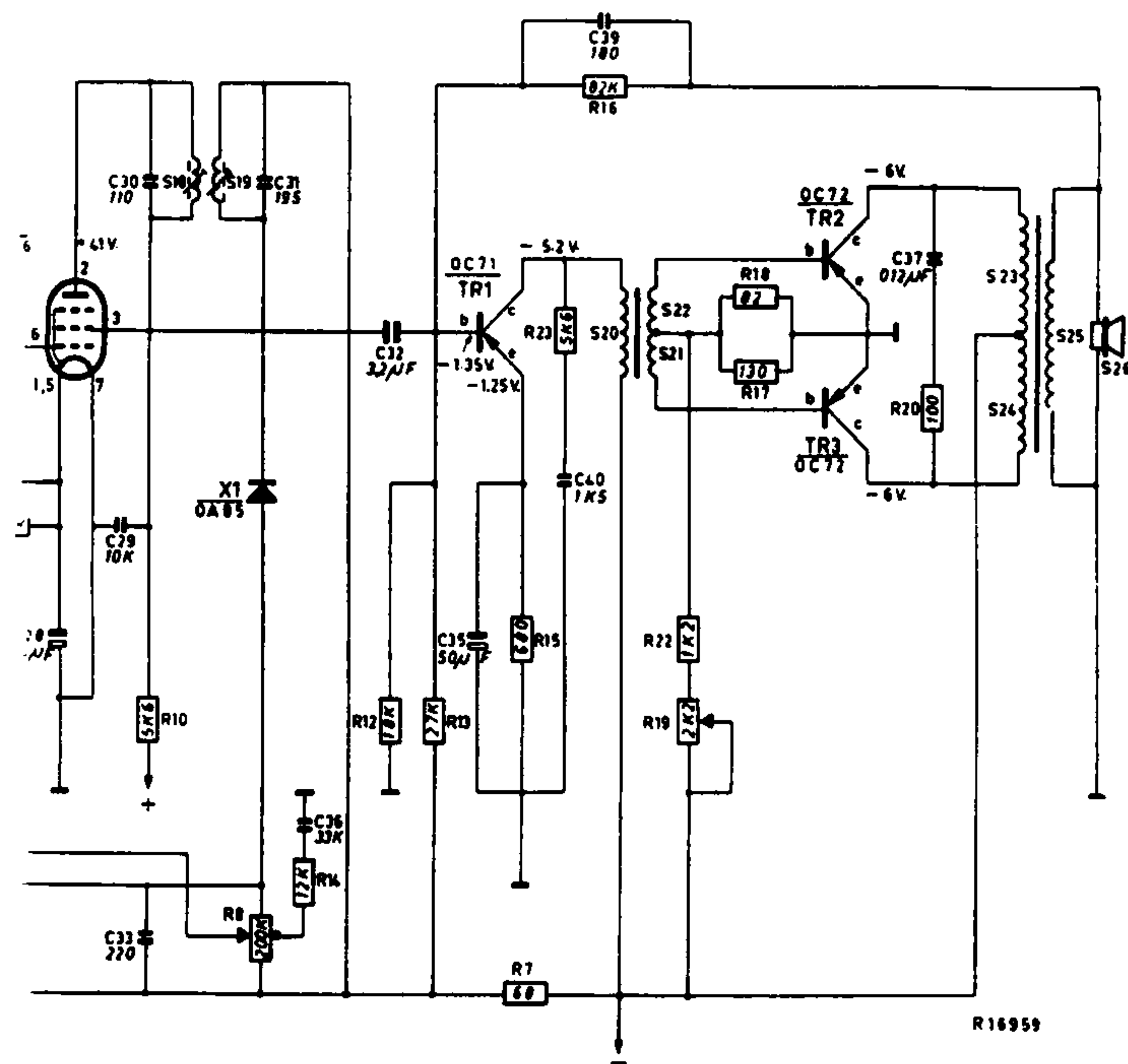


# Service



**Receptor portátil de radiodifusão sonora PHILIPS**  
**Tipos L4X65 BT-00-04**



**GAMAS DE FREQUENCIA**

- OM ÷ 517-1610 kHz (186-580 m)
- OC . 3 ÷ 1,6-4 MHz (75-187 m)
- OC . 2 ÷ 5,9-12,1 MHz (24,8-50,8 m)
- OC . 2a ÷ 12,1-22,2 MHz (13,5-24,8 m)

**F. I.: 452 kHz**

**Pilhas:**

Anódica 45 V

Filamentos e transistores 8 × 1,5 V

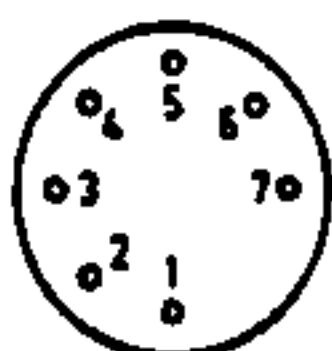
**Consumo (à máxima tensão de saída)**

Corrente anódica 3 mA

Corrente de filamentos e transistores  
55 mA

**Altifalante: AD 3460 Z**

B1-2-3.



TR1-2-3.

