

Serv-o-Meum E-a-1 E-a-2 E-a-3	Push button Draktoets Taste Touche Tecla	Varco Varco Drehko Cond. var. Cond. var.	Signal Signaal Signal Signal Señal	Adjust Afregelen Abgleichen Réglér Ajustense	Indication Aanwijzing Anzeige Indication Indicación
I.F. circuits M.F.-kringen ZF-Kreise (AM) Circuits F.I. Circuitos de F.I.	3	min.	452 kc/s via 33 nF + 1 kΩ e - TS5 b - TS4 b - TS3	S35 S33 S29, S30	
R.F. circuits H.F.-kringen HF-Kreise Circuits H.F. Circuitos de R.F.	3	550 kc/s	550 kc/s	S22	max. output max. uitg. spanning max. Ausg. spannung max. de sortie max. de salida
		1550 kc/s	1550 kc/s	C39	
	550 kc/s	550 kc/s	S14		
2	150 kc/s	150 kc/s	C40		
	200 kc/s	200 kc/s	S16, C32		
4	6 Mc/s	6 Mc/s	S20		
	9,5 Mc/s	9,5 Mc/s	C38		
		6 Mc/s	6 Mc/s	S12	
		9,5 Mc/s	9,5 Mc/s	C35	
I.F. circuits M.F.-kringen ZF-Kreise (FM) Circuits F.I. Circuitos de F.I.	5	max.	10,7 Mc/s via 1500 pF e - TS5 b - TS4 b - TS3 S4/R4 (A) e - TS2	S37 S38 S31 S26, S28 S7, S25 S4	max. D.V. * 0 V D.V. ** max. D.V. ** max. D.V. * max. D.V. * min. D.V. *
R.F. circuits H.F.-kringen HF-Kreise (FM) Circuits H.F. Circuitos de R.F.	5	88,2 Mc/s 107,4 Mc/s	88,2 Mc/s 107,4 Mc/s	S5, S3 C24, C15	max. D.V. *

Connect diode voltmeter as indicated in
 Diodenvoltmeter aansluiten als aangegeven in
 Diodenvoltmeter anschliessen wie angegeben in
 Connecter le voltmètre à diode comme il est indiqué dans
 Conectese el voltmetro de diode como se indica en

: * fig. A ** fig. B
 : fig. A fig. B
 : fig. A fig. B
 : fig. A fig. B
 : fig. A fig. B

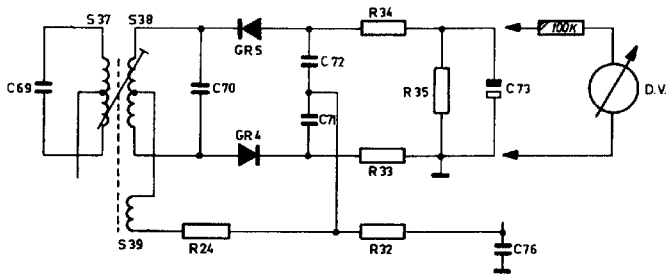
Cabinet of black	WE 592 41	Gehäuse, 01-encast	WE 592 41	caja, 00-marzo	WE 592 41
Ornamental profile, 00 (A)	WE 671 57	Zierprofil, 00 (A)	WE 671 57	Cuadro ornamental, 00 (A)	WE 671 57
Ornamental profile, 01 (A)	WE 671 58	Zierprofil, 01 (A)	WE 671 58	Cuadro ornamental, 01 (A)	WE 671 58
Ornamental front, 00 (B)	WE 598 84	Zierblende, 00 (B)	WE 598 84	Fronte ornamental, 00 (B)	WE 598 84
Ornamental front, 01 (B)	WE 598 85	Zierblende, 01 (B)	WE 598 85	Fronte ornamental, 01 (B)	WE 598 85
Ornamental profile, 00 (C)	WE 745 72	Zierprofil, 00 (C)	WE 745 72	Cuadro ornamental, 00 (C)	WE 745 72
Ornamental profile, 01 (C)	WE 745 73	Zierprofil, 01 (C)	WE 745 73	Cuadro ornamental, 01 (C)	WE 745 73
Ornamental profile, 00 (D)	WE 746 25	Zierprofil, 00 (D)	WE 746 25	Cuadro ornamental, 00 (D)	WE 746 25
Cover over WE 746 22	WE 746 25	Kappe über WE 746 22	WE 746 25	Caperusa sobre WE 746 22	WE 746 25
Ornamental profile, 01 (D)	WE 746 25	Zierprofil, 01 (D)	WE 746 25	Cuadro ornamental, 01 (D)	WE 746 25
Cover over WE 746 23	WE 746 26	Kappe über WE 746 23	WE 746 26	Caperusa sobre WE 746 23	WE 746 26
Ornamental profile, 00 (E)	WE 671 55	Zierprofil, 00 (E)	WE 671 55	Cuadro ornamental, 00 (E)	WE 671 55
Ornamental profile, 01 (E)	WE 671 70	Zierprofil, 01 (E)	WE 671 70	Cuadro ornamental, 01 (E)	WE 671 70
Handle, 00	WE 761 15	Handgriff, 00	WE 761 15	Asa, 00	WE 761 15
Handle, 01	WE 761 16	Handgriff, 01	WE 761 16	Asa, 01	WE 761 16
Screw, fixing handle	WE 579 90	Schraube, Bef. Handgriff	WE 579 90	Tornillo, fij. asa	WE 579 90
Battery holder	WE 745 77	Batteriehälter	WE 745 77	Batería	WE 745 77
Bracket, fix. batt. holder	WE 745 76	Bügel, Bef. Batteriehälter	WE 745 76	Abrazadera, fij. portapila	WE 745 76
Bracket, fix. chassis	WE 745 75	Bügel, Bef. Chassis	WE 745 75	Abrazadera, fij. chasis	WE 745 75
Spring of batt. holder (+)	WE 648 98	Feder in Batt.halter (+)	WE 648 98	Resorte en portapila (+)	WE 648 98
Spring of batt. holder (-)	WE 644 17	Feder in Batt.halter (-)	WE 644 17	Resorte en portapila (-)	WE 644 17
Contacts of battery	WE 688 23	Kontaktplatte in Batterie	WE 688 23	Placa de contacto en batería	WE 688 23
Aerial (+)	WE 333 69	Antenne (+)	WE 333 69	Perceña (+)	WE 333 69
Bridged wafer on: rear panel	WE 695 78	Schammierelegung auf: Rückwand	WE 695 78	Saqueo de articulación en tapa posterior	WE 695 78
bottom	WE 695 77	bodem	WE 695 77	base	WE 695 77
Foot on bottom, 00	WE 317 45	Fuß auf Boden, 00	WE 317 45	Pie en base, 00	WE 317 45
Foot on bottom, 01	WE 317 52	Fuß auf Boden, 01	WE 317 52	Pie en base, 01	WE 317 52
Socket for earphone	AS 966 21	Steckerbuchse	AS 966 21	Conexión de casero telef.	AS 966 21
Socket for PU	AS 788 92	PU-steckleitung	AS 788 92	Conexión de Condensator	AS 788 92
Screw fix. rear panel	WE 580 15	Schraube, bev. Rückwand	WE 580 15	Tornillo fij. tapa posterior	WE 580 15
Knob (tone control)	WE 745 61	Knopf (Tonregler)	WE 745 61	Botón (tonalidad)	WE 745 61
Knob (volume control)	WE 745 54	Knopf (Lautstärkerregler)	WE 745 54	Botón (control de volumen)	WE 745 54
Knob (tuning)	WE 367 33	Knopf (Abstimmung)	WE 367 33	Botón (sintonía)	WE 367 33
Roll on variable capacitor	WE 745 57	Roll op variable condensator	WE 745 57	Polen en condensador variable	WE 745 57
Footed wheel (tone control)	WE 745 52	Tandwal (Tonreg.)	WE 745 52	Rueda dentada (tonalidad)	WE 745 52
Pointer	WE 590 98	Wäizer	WE 590 98	Aguja	WE 590 98
Screen for dial	WE 745 59	Platt. voor schaal	WE 745 59	Agua para cuadrante	WE 745 59
Socket for aerial	WE 333 68	Antenne-anschluss	WE 333 68	Enchufe de antena	WE 333 68
Push button unit	WE 181 29	Drucktaastenschalter	WE 181 29	Unidad de pulsadores	WE 181 29
Push button	EA 713 52	Drucktaaste	EA 713 52	Pulsador	EA 713 52
fil., small:	WE 227 06	Schaal, klein:	WE 227 06	Cuadrante pequeño:	WE 227 06
overse, 00	WE 227 07	übersee, 00	WE 227 07	ultramar, 00	WE 227 07
overse, 01	WE 227 08	übersee, 01	WE 227 08	ultramar, 01	WE 227 08
N-B, Zwi., 00	WE 222 42	N-B, Schweiz, 00	WE 222 42	N-B, Suiza, 00	WE 222 42
N-B, Zwi., 01	WE 222 43	N-B, Schweiz, 01	WE 222 43	N-B, Suiza, 01	WE 222 43
fil., large	WE 222 77	Schaal, great:	WE 222 77	Cuadrante grande:	WE 222 77
overse, 00	WE 222 78	übersee, 00	WE 222 78	ultramar, 00	WE 222 78
overse, 01	WE 222 97	übersee, 01	WE 222 97	ultramar, 01	WE 222 97
N-B, Zwi., 00	WE 223 09	N-B, Schweiz, 00	WE 223 09	N-B, Suiza, 00	WE 223 09
N-B, Zwi., 01	WE 223 09	N-B, Schweiz, 01	WE 223 09	N-B, Suiza, 01	WE 223 09
Imped. circuit, PM	S31	Parresistor	S31	IF band pass filter, PM	S31
Imped. circuit, PM	S35	Stabantenne	S35	MF-bandfilter, PM	S35
Imped. circuit, PM	S36	Stabantenne	S36	ZF-Bandfilter, PM	S36
S2	S37	S2	S37	S2	S37

C10
C11 WE 347 01
C12

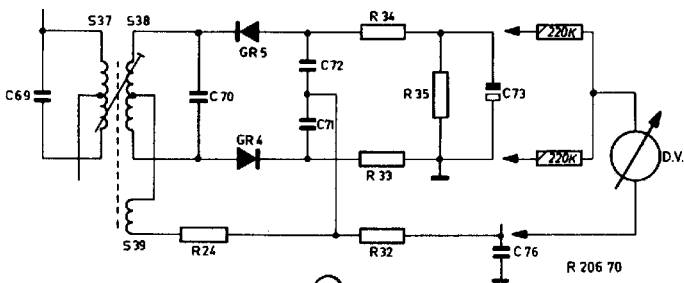
IF band pass filter, PM
MF-bandfilter, PM
ZF-Bandfilter, PM
WE 127 65

S31
S35
S36
S37

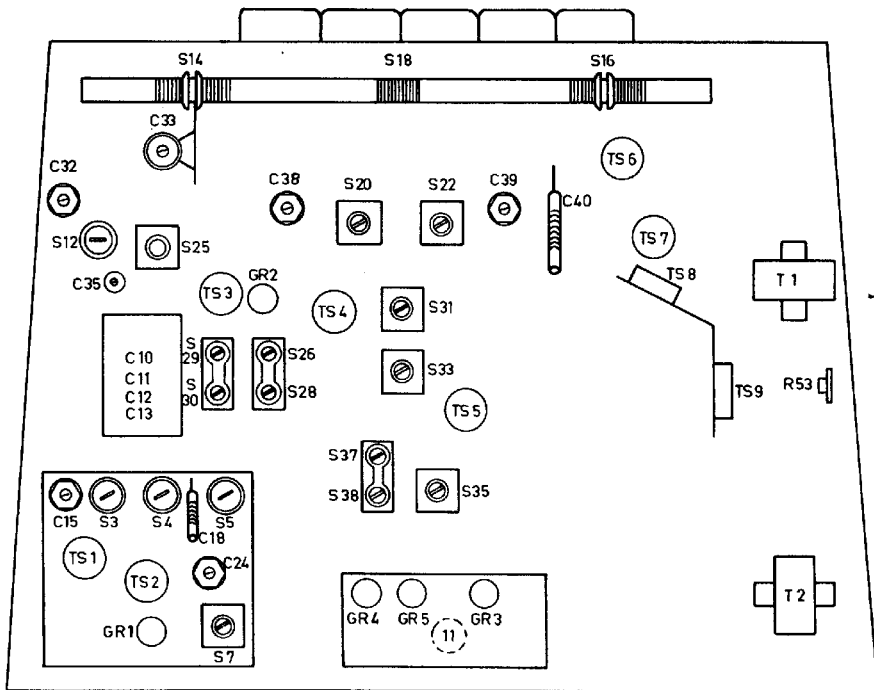
Imped. circuit, PM
Imped. circuit, PM
Imped. circuit, PM
S2



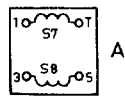
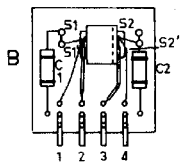
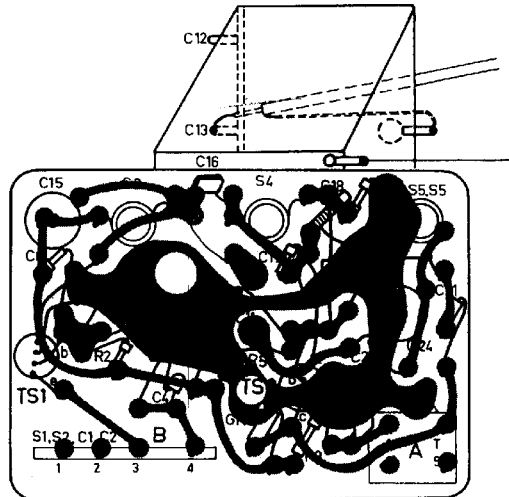
(A)



(B)

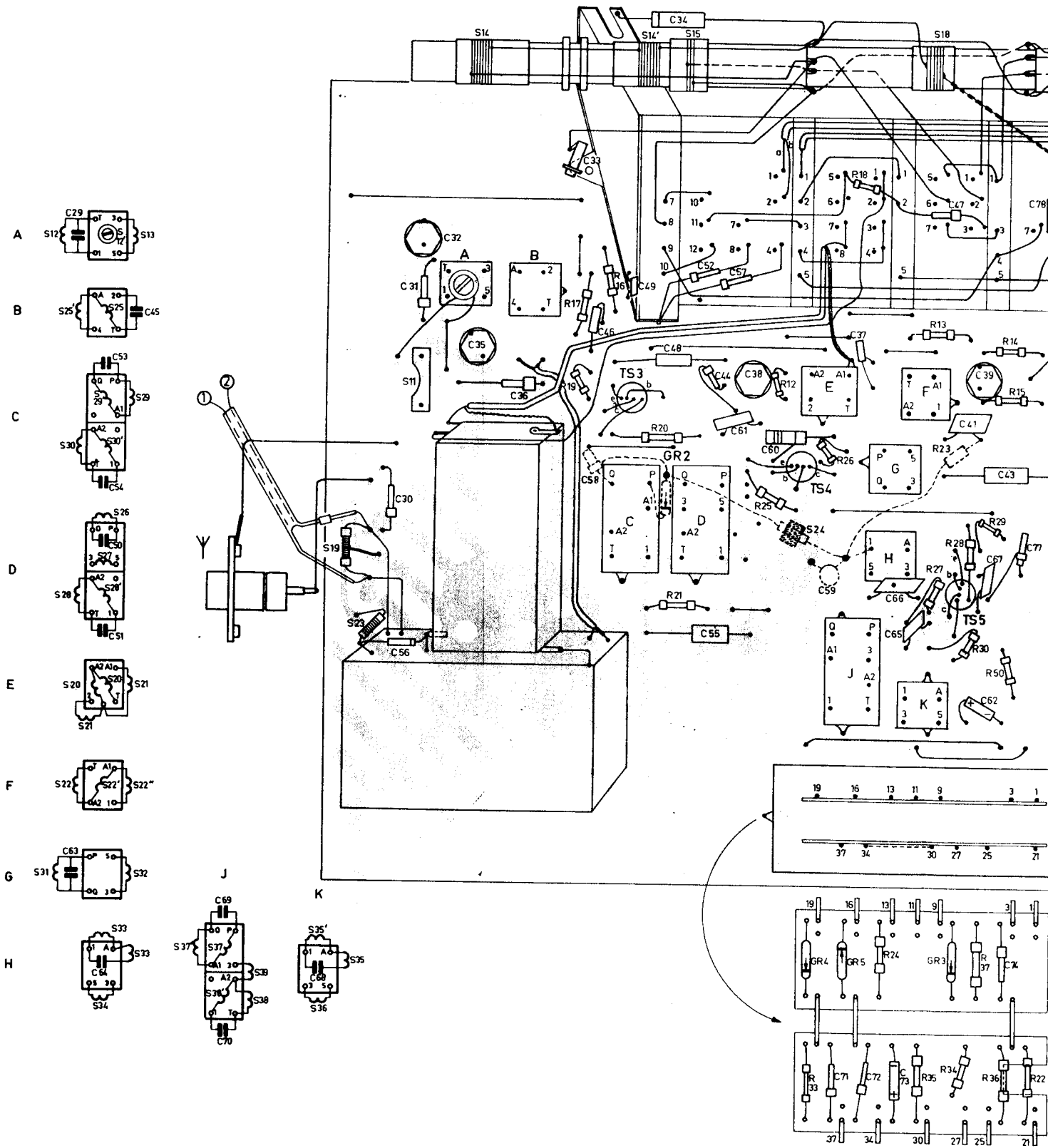


S	1. 1'	2. 3. 2'	4.	7. 8. 5. 5'
C	1. 6. 15	5. 4. 2. 12. 13. 16.	7. 10. 17.	18. 19. 20. 22. 23. 24. 21.
R		2. 3. 1	7. 5. 8.	4.

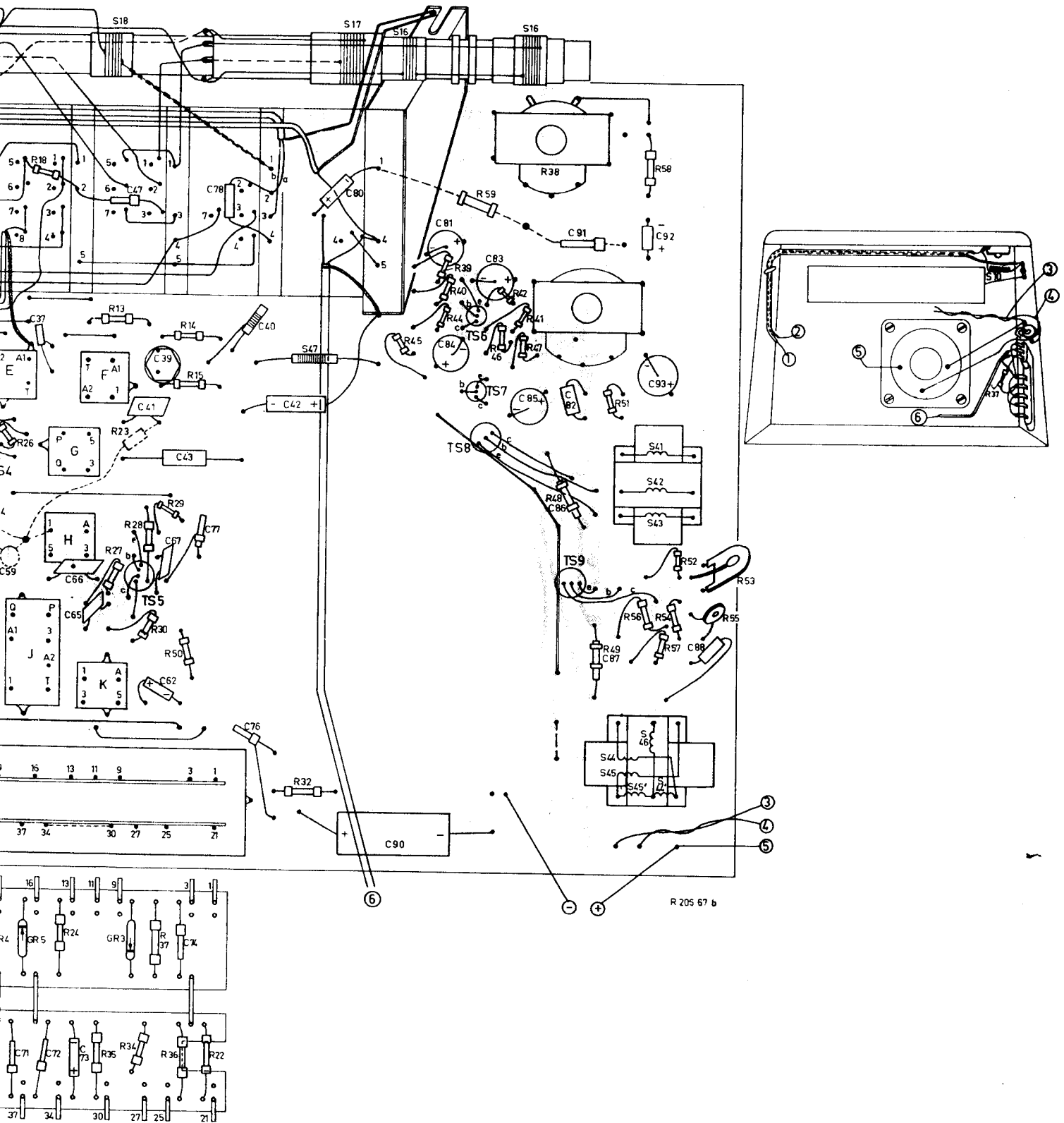


R 207 56

S	19.	23.	11.	A.	14.	8.		C.	D.	14.	15.		24.	E.	J.	G.	H.	F.	K.	18.															
R							17	16	19	20	21	25	12.	26	33	18	24	35	27	28	30	34	13	31	29	50	36	14	15	22	23				
C	30.	56.	32	31.	12.	13.	35	36.	33.	46	49	58.	48	55	44	52	61	38	57	60	37	71	72	66	65	73	47.	62	67	39	41	77	74	43	76



J	G	H	F	K	18	47	17	16	16	41	42	43	44	44'	45	45'	46																				
39	18	24	35	27	28	30	34	13	31	29	50	36	14	15	22	23	32	45	39	40	44	42	41	46	47	38	43	48	49	51	58	56	57	52	54	53	55
37	71	72	66	65	73	47	62	67	39	41	77	74	43	76	78	40	42	80	90	81	84	83	85	91	86	82	87	93	92	88							



27	28	29	30	31	32	33	34	35	35'	37	37'	38	39	39'	40	41	42	43	44	45	46	47	48	49	50	51	52	53	54	55	56	57	58	59	60	61	62	63	64	65	66	67	68	69	70	71	72	73	74	75	76	77	78	79	80	81	82	83	84	85	86	87	88	89	90																								
1	2	3	4	5	6	7	8	9	10	11	12	13	14	15	16	17	18	19	20	21	22	23	24	25	26	27	28	29	30	31	32	33	34	35	36	37	38	39	40	41	42	43	44	45	46	47	48	49	50	51	52	53	54	55	56	57	58	59	60	61	62	63	64	65	66	67	68	69	70	71	72	73	74	75	76	77	78	79	80	81	82	83	84	85	86	87	88	89	90

