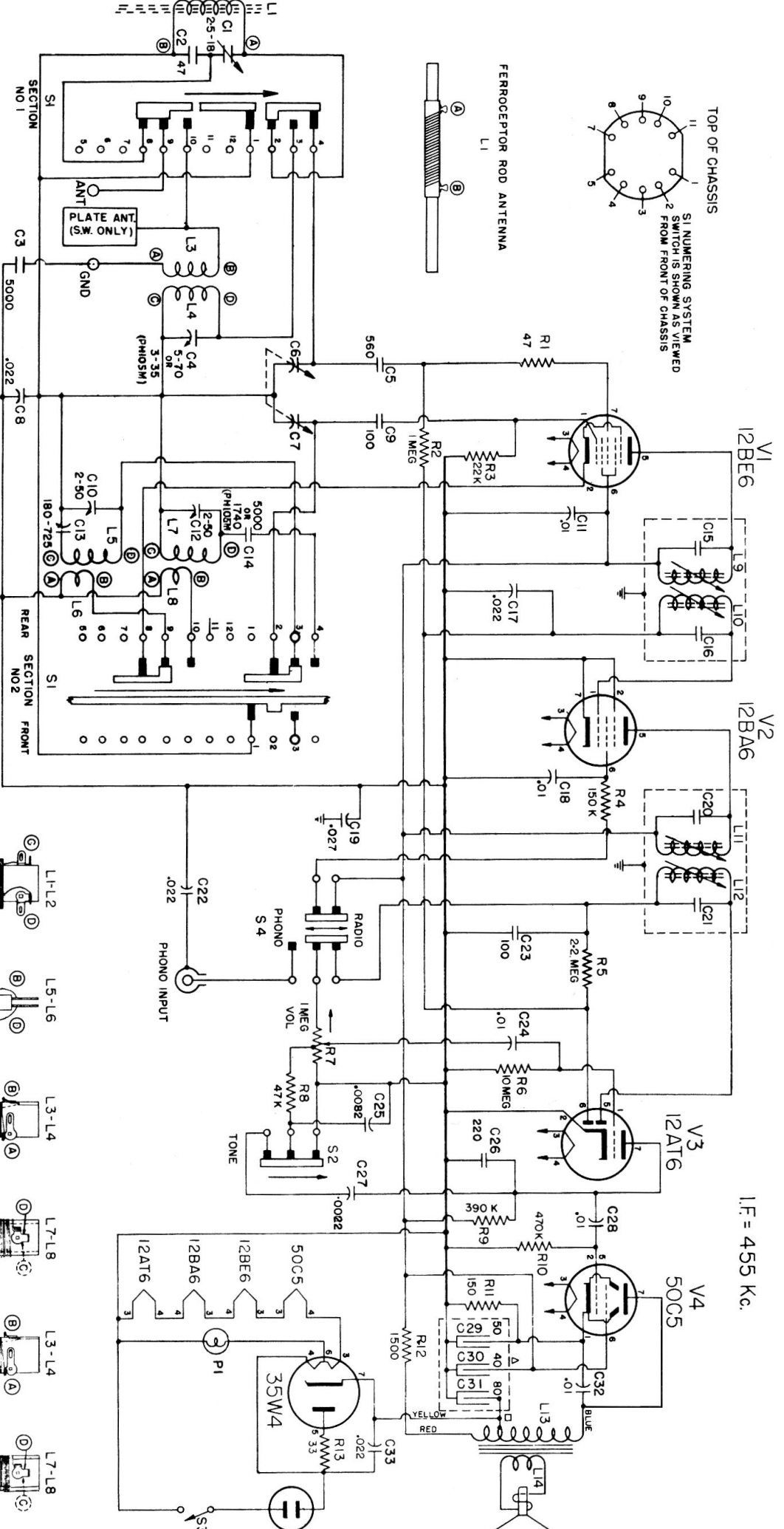
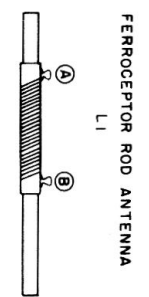
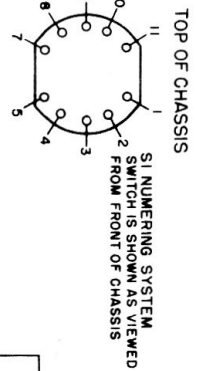


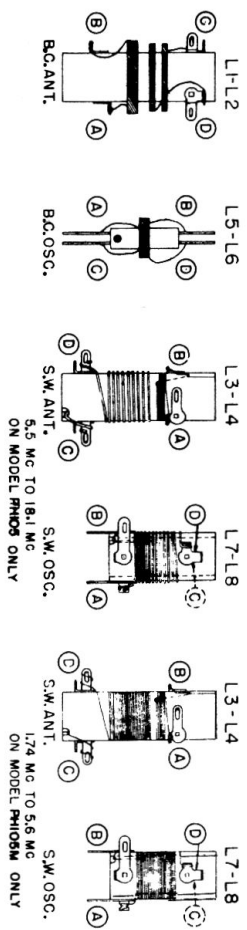
L	1	3, 4	5, 6, 7, 8, 9, 10	11	12	23	24	25	26	27	28	29, 30, 31, 32	33	
C	1, 2	3	4, 5, 6, 8, 7, 9	10, 11, 12, 13, 14, 15, 17, 16	18	19, 20, 4	21	22	23	24	25	26, 27, 8	9, 10, 11	12
R		1	2, 3			5	6, 7, 8							13



I.F. = 455 Kc.

ARROWS → ON POTENTIOMETERS AND SWITCHES INDICATE CLOCKWISE ROTATION OF SHAFT. ALL SWITCH SECTIONS ARE SHOWN IN THE EXTREME COUNTER CLOCKWISE POSITION OF SWITCH (S1 IS IN THE STANDARD BROADCAST POSITION). ALL DC. VOLTAGES MEASURED TO B - WITH A 20,000 OHMS PER VOLT METER, NO SIGNAL APPLIED. TEST VOLTAGE = 117 V., 25-60  $\sim$

ALL RESISTANCE VALUES ARE INDICATED IN OHMS, K = 1000 OHMS, MEG = 1000,000 OHMS. CAPACITOR VALUES,  $\mu$  - MICRO-FARADS,  $\mu$  - MICRO-FARADS,  $\mu$  - MICRO-FARADS.



# ALIGNMENT PROCEDURE

SIGNAL GENERATOR		RECEIVER				
Operation Steps	Output Connections to Receiver	Frequency	Range Switch	Tuning Capacitor	See Notes	Adjust in Stated Order For Maximum Output
1	To 12BA6 Control Grid (1) through .05 MF capacitor	455 kc.	Pos. 1	Min.		2nd I.F. Transformer L12, L11.
2	To stator plates of C6	455 kc.	Pos. 1	Min.	A	1st I.F. Transformer L10, L9.
3	To Antenna terminal through 5 mmf capacitor*	1500 kc.	Pos. 1	1500 kc.		B.C. Osc. Trimmer C10 B.C. Ant. Trimmer C1
4	To Antenna terminal through 5 mmf capacitor**	600 kc.	Pos. 1	600 kc.	B	B.C. Osc. Padder C13
5 (PH105)	To Antenna terminal through 100 mmf capacitor **	16 Mc.	Pos. 2	16 Mc.	C	S.W. Osc. Trimmer C12 S.W. Ant. Trimmer C4
5 (PH105M)	To antenna terminal through 100 mmf capacitor **	5 Mc.	Pos. 2	5 Mc.	C	S.W. Osc. Trimmer C12 S.W. Ant. Trimmer C4

\* or a Standard Dummy Antenna in series with a 5 mmf capacitor.

\*\* or a Standard Dummy Antenna in series with a 200 mmf capacitor.

NOTE A: After operation 2 has been completed do not make any further adjustments to L12, L11.

NOTE B: After operation 4 has been completed, repeat operation 3 then operation 4.

NOTE C: Unscrew Osc. Trimmer approximately 3 turns from tight. Then turn clockwise until the first output peak is obtained. Make adjustments using this peak. Rock the tuning capacitor back and forth while adjusting antenna trimmer.

POINTER SHOWN AT HIGH FREQUENCY END OF DIAL SCALE.  
GANG CONDENSER AT MIN. CAPACITY (OPEN).  
DRUM IN POSITION SHOWN.  
COILS OF SPRING EXTENDED TO 1".  
LENGTH OF CORD APPROX. 31"

