

POWER AMPLIFIER

MAX 250/500

SERVICE MANUAL



POWER AMPLIFIER

MAX 250/500

SERVICE MANUAL

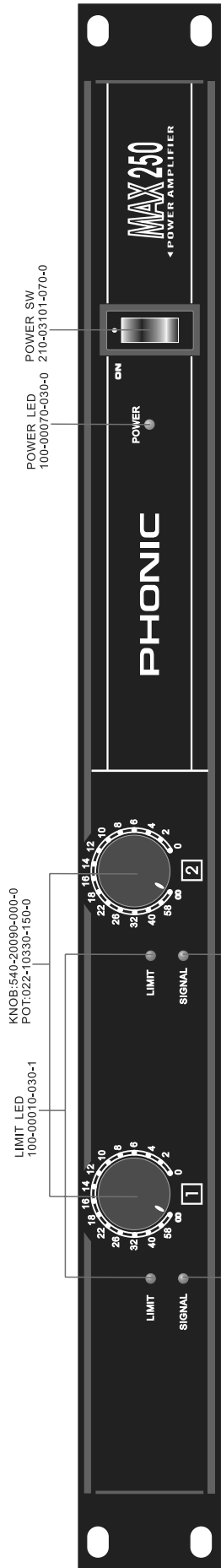
CONTENTS

PANEL LAYOUT.....	3
SYSTEM BLOCK DIAGRAM	
MAX250 SYSTEM BLOCK DIAGRAM.....	4
MAX500 SYSTEM BLOCK DIAGRAM.....	5
PCB	
MAX250 MAIN BOARD PCB.....	6
MAX500 FRONT PANEL PCB/ IN/OUT & POWER SUPPLY PCB.....	7
MAX500 POWER AMP. PCB.....	8
SCHEMATIC	
MAX250 SCHEMATIC.....	9
MAX250 POWER SUPPLY SCHEMATIC.....	10
MAX250 POWERAMP. SCHEMATIC.....	11
MAX250 IN/OUT SCHEMATIC.....	12
PART LIST	
MAX250 MAIN BORD PCB-PART LIST.....	13
MAX250 MISCELLANEOUS ITEMS.....	17
MAX250 POWER REQUIREMENT CLASSIFICATION.....	19
MAX500 FRONT PANEL PCB-PART LIST.....	20
MAX500 POWER AMP. PCB-PART LIST.....	21
MAX500 IN/OUT & POWER SUPPLY PCB-PART LIST.....	22
MAX500 MISCELLANEOUS ITEMS.....	24
MAX500 POWER REQUIREMENT CLASSIFICATION.....	26
DIMENSIONS	
MAX250 DIMENSIONS.....	27
MAX500 DIMENSIONS.....	28

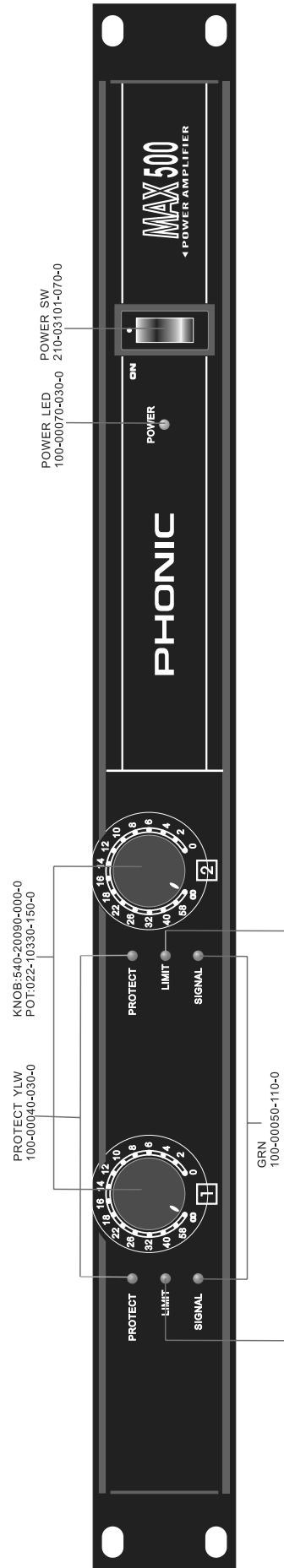
Phonic reserves the right to improve or alter any information supplied within this document without prior notice.

V2.1
Oct 14, 2002

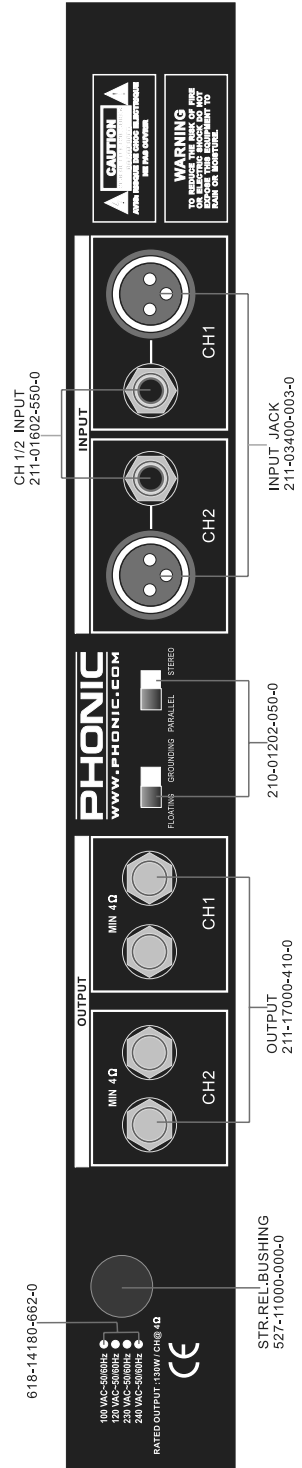
MAX250 Front Panel



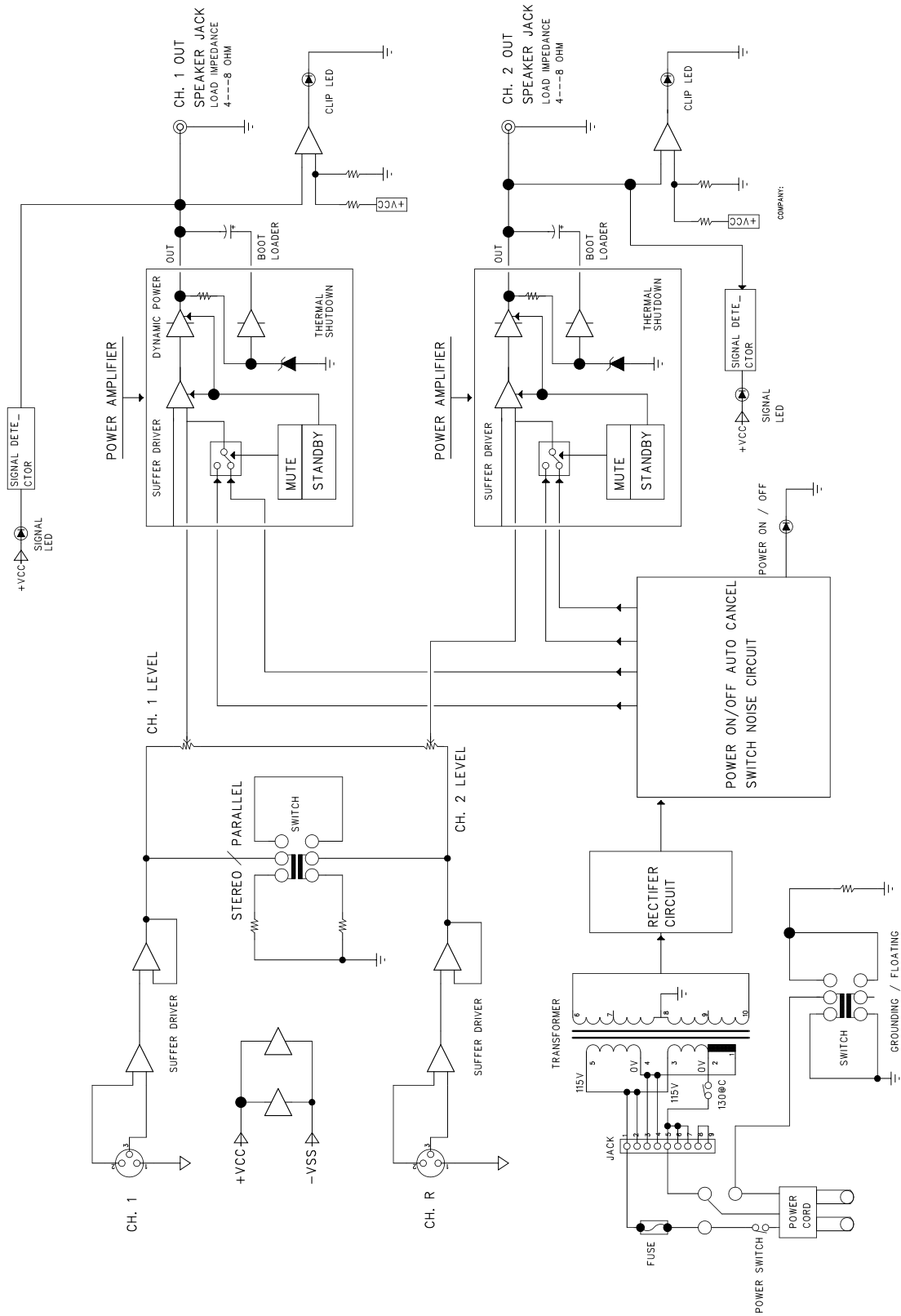
MAX500 Front Panel



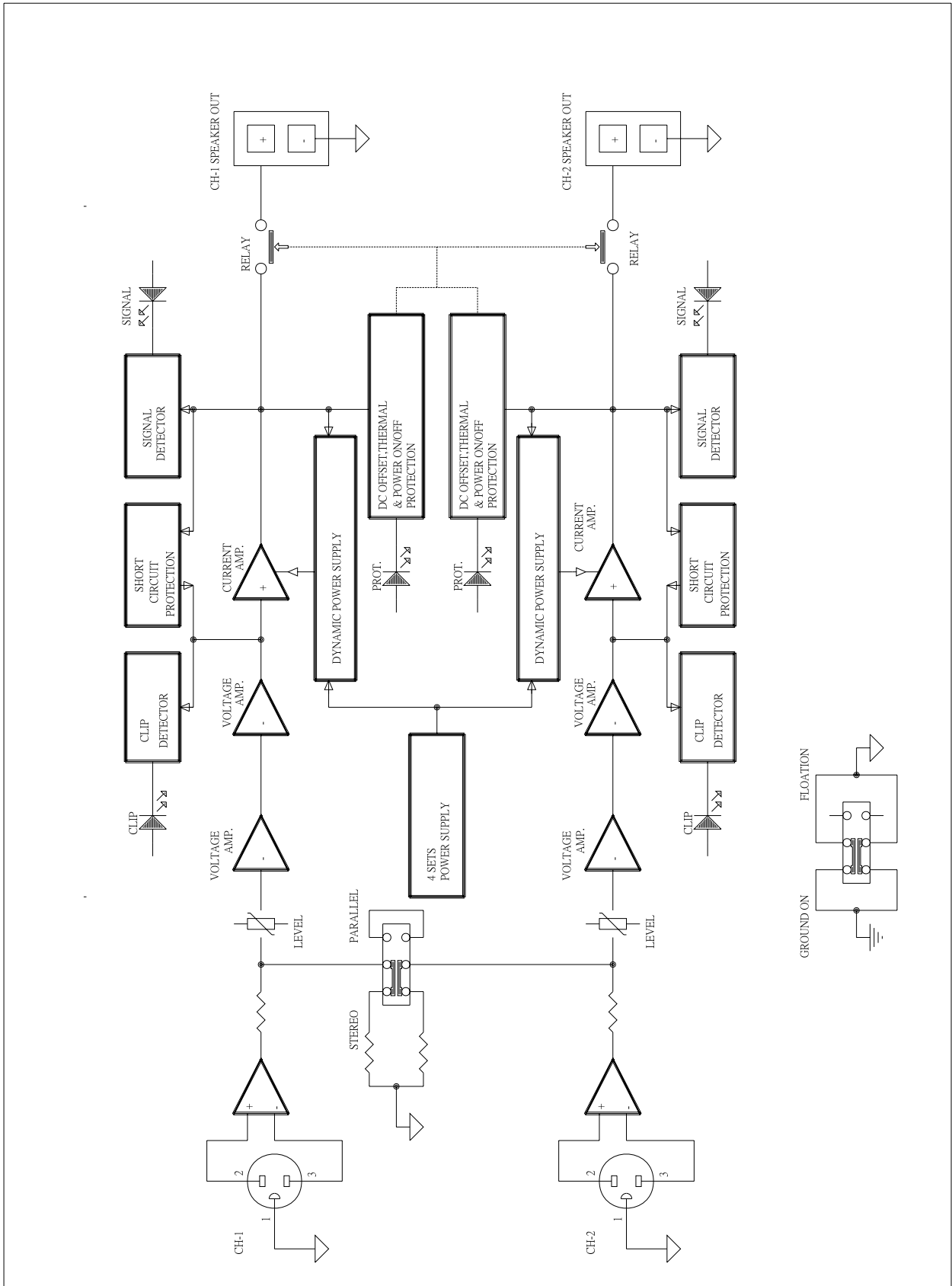
MAX250/500 Rear Panel



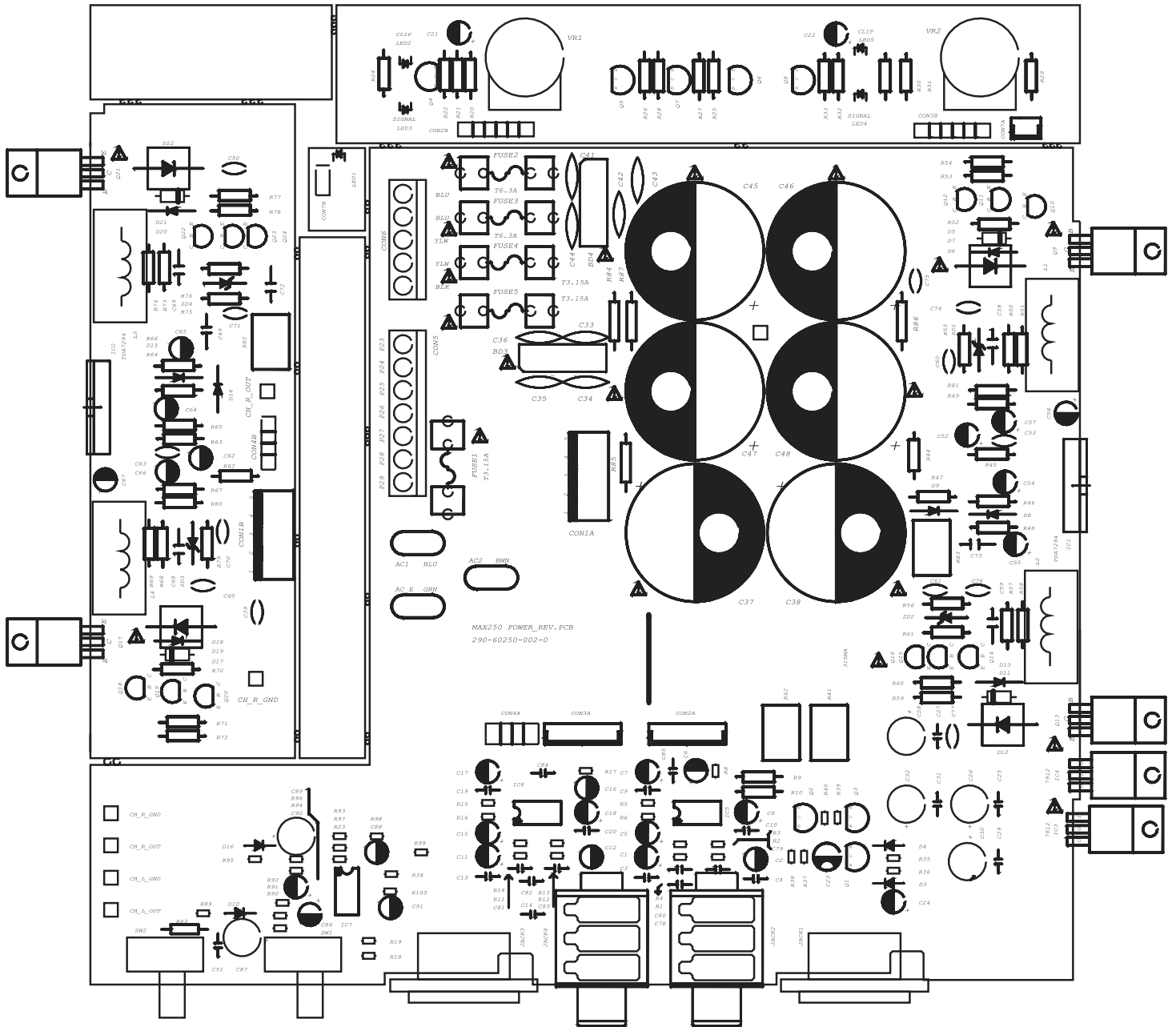
MAX250 SYSTEM BLOCK DIAGRAM



MAX 500 SYSTEM BLOCK DIAGRAM

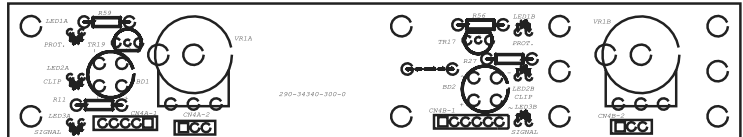


MAX250 MAIN BOARD PCB

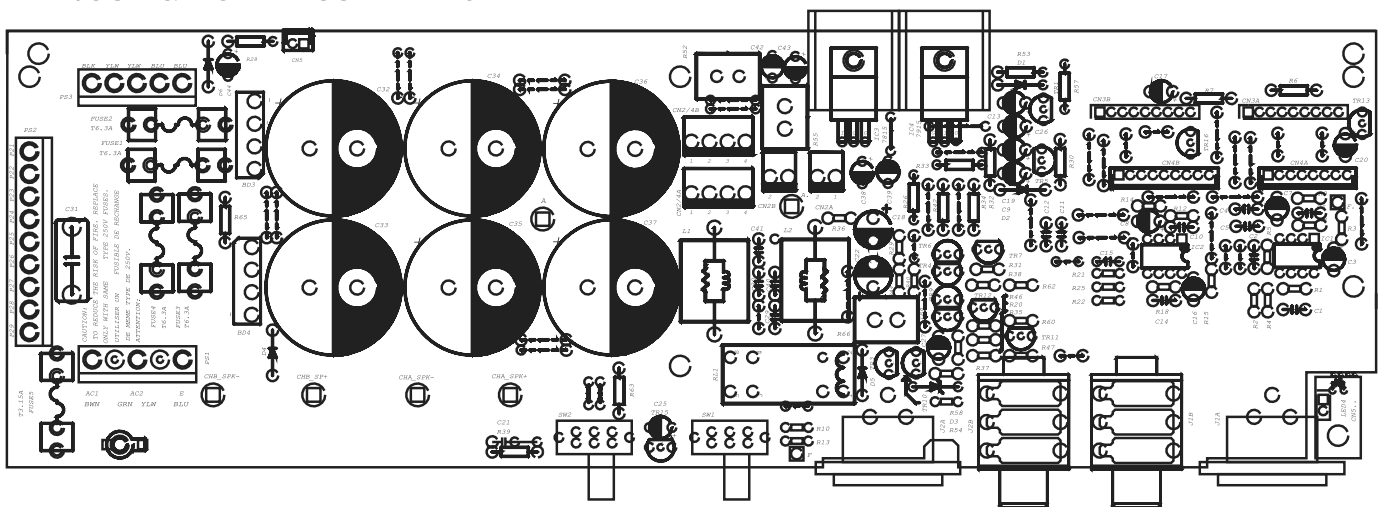


MAX500 FRONT PANEL PCB/ IN/OUT & POWER SUPPLY PCB

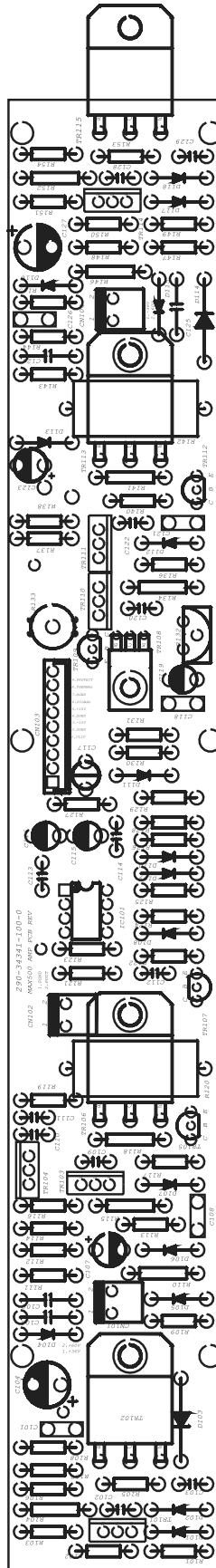
MAX500 FRONT PANEL PCB



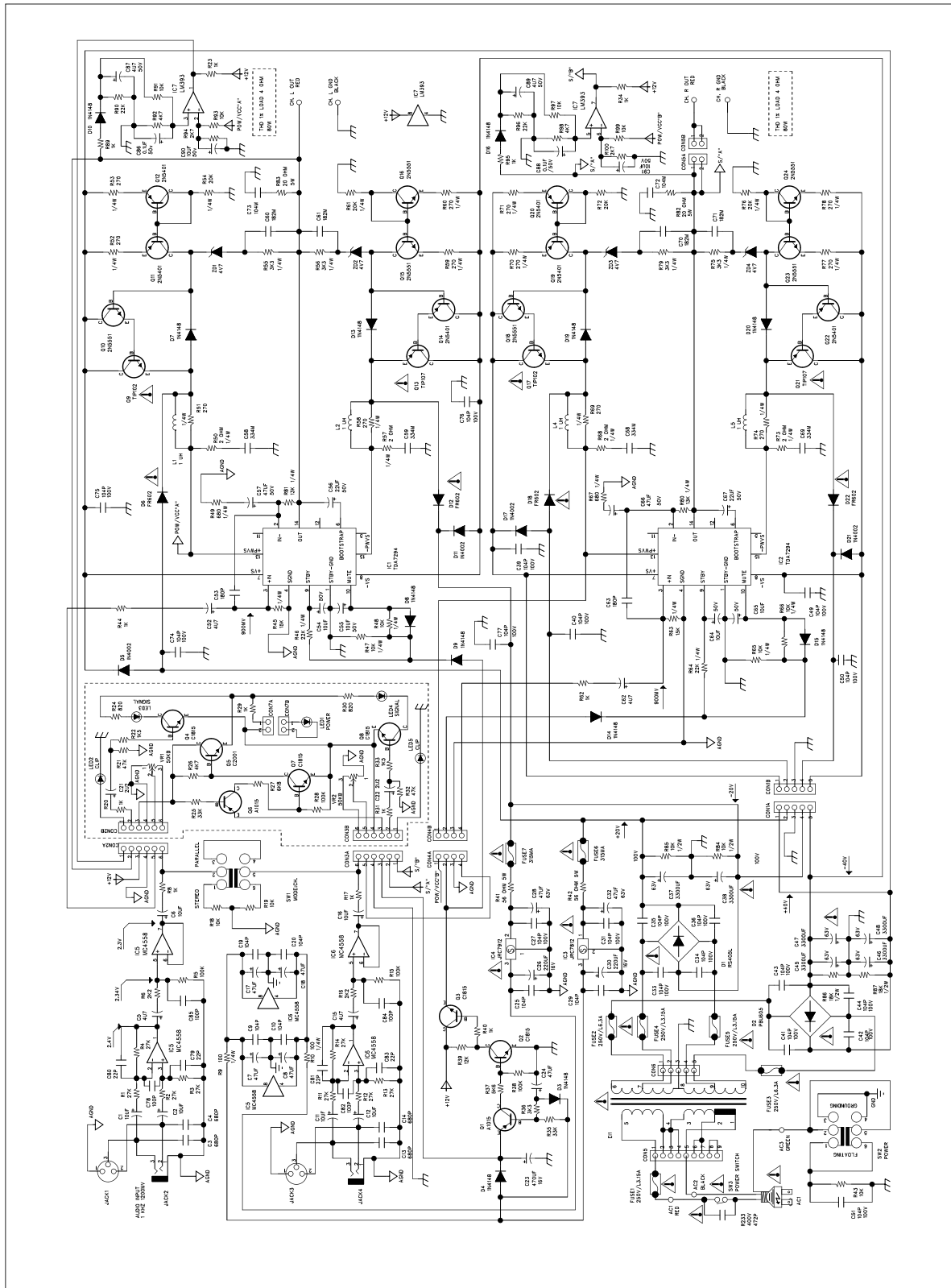
IN/OUT & POWER SUPPLY PCB



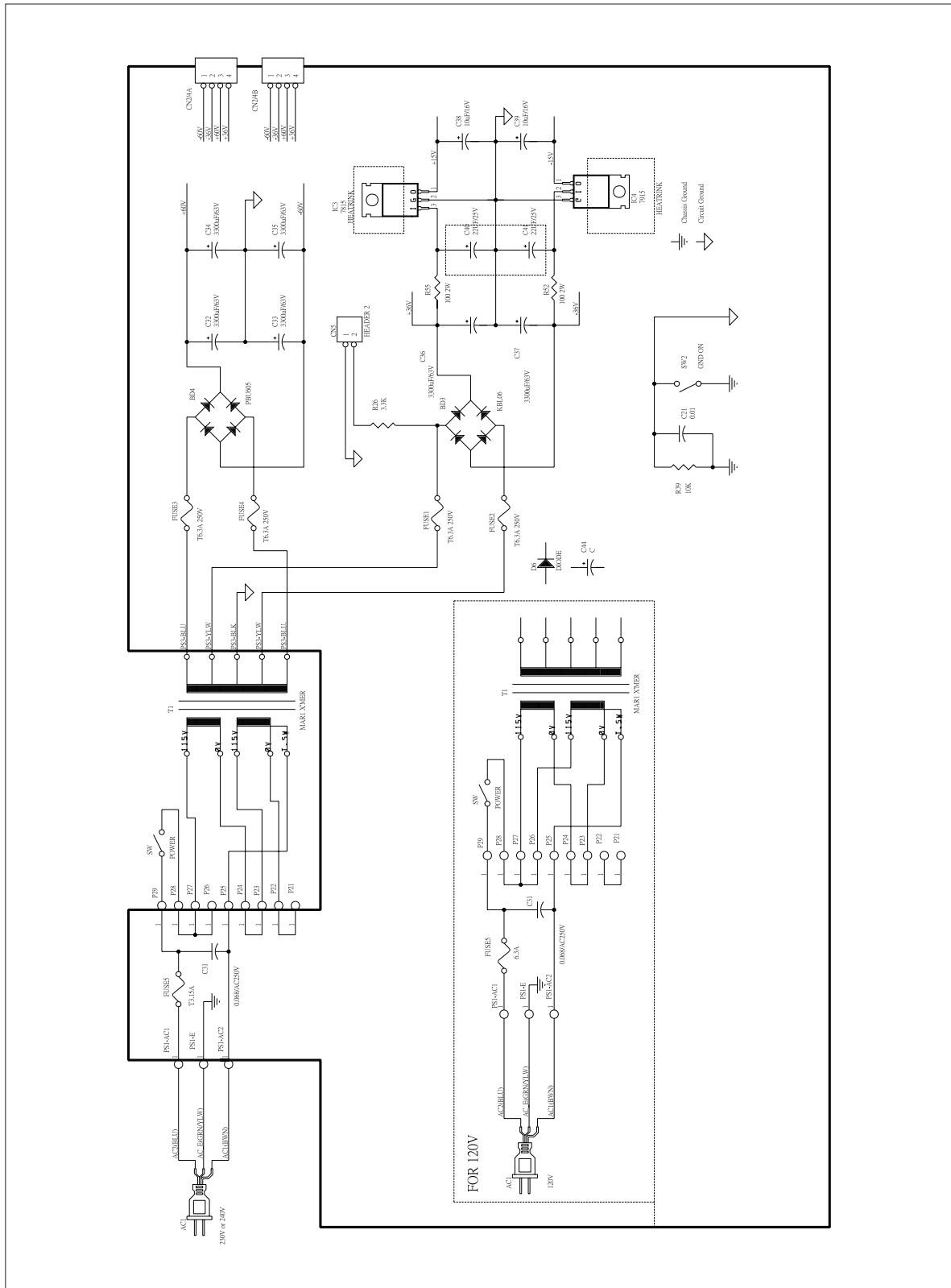
MAX500 POWER AMP. PCB



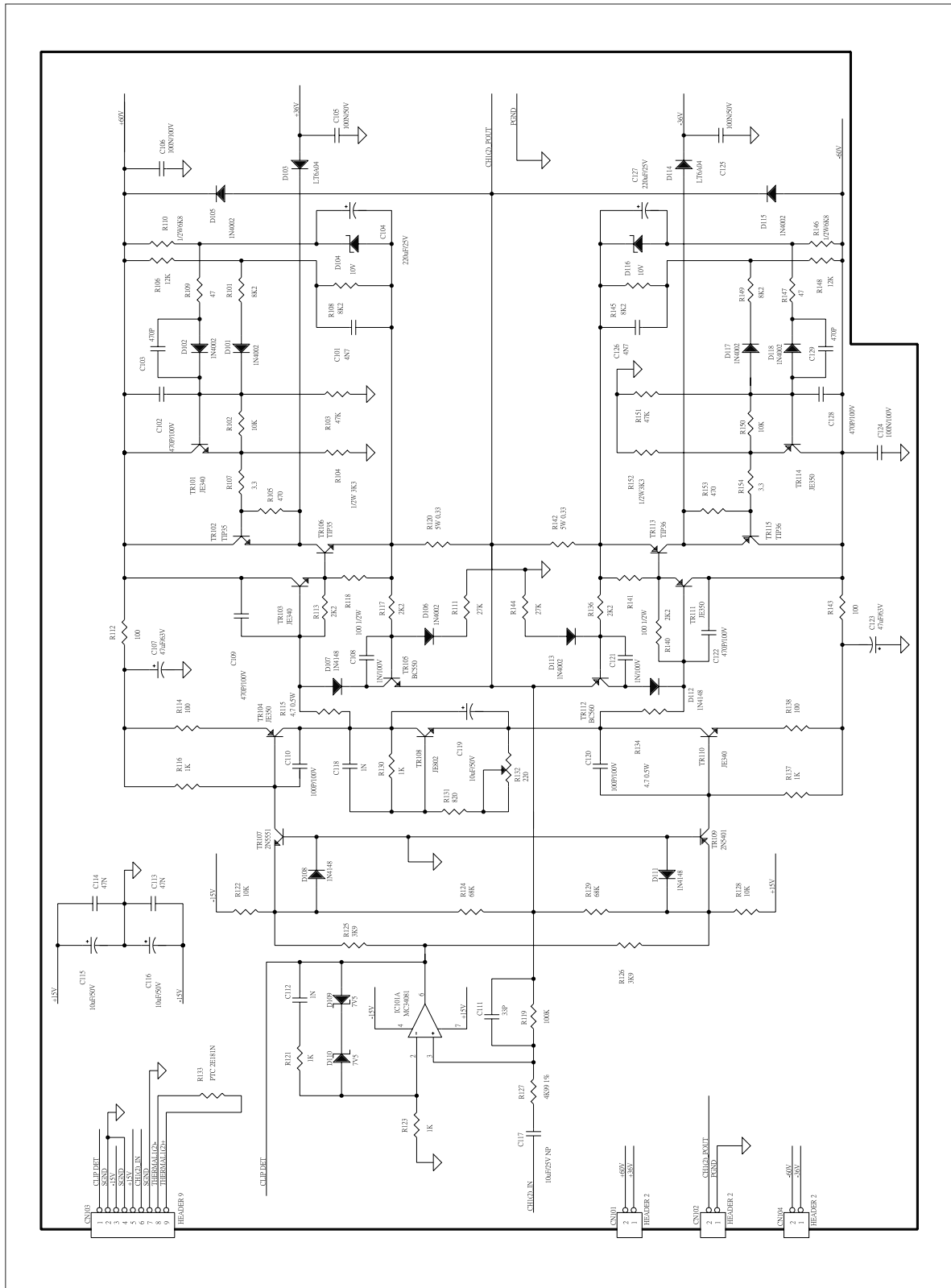
MAX250 SCHEMATIC



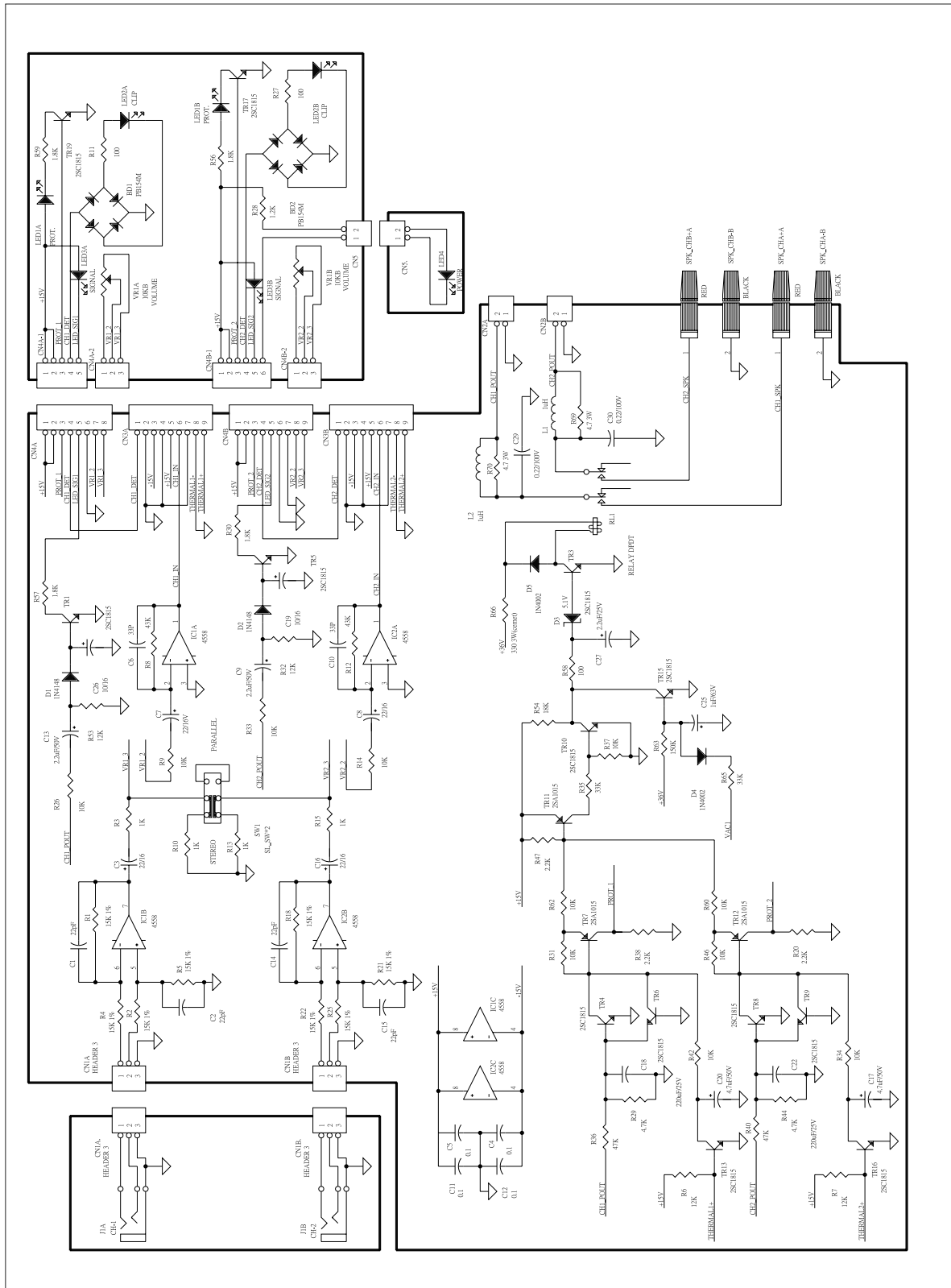
MAX250 POWER SUPPLY SCHEMATIC



MAX250 POWER AMP. SCHEMATIC



MAX250 IN/OUT SCHEMATIC



MAX250 MAIN BORD PCB-PART LIST

Ref.	Phonic	Specifications
R84.85	000-10336-400-0	CF RES.10K J 0.5W T
R86.87	000-18336-400-0	CF RES. 18K J 1/2W
R82.83	003-20073-602-0	CEMENT RES. 20 J 5W SQM
R41.42	003-56073-601-6	CEMENT RES.56J 5W
VR1.2	022-10330-150-0	S.ROT/VR 10KB 20MM P
C37.38.45-48	030-33866-031-0	E/C 3300UF 63V 30*26 P 105 DEGREE
L1.2.4.5	075-10081-100-0	INDUCTANCE 1UH J M 10MM
D5.11.17.21	090-00002-000-0	DIODE 1N4002 SILITEK
D6.12.18.22	090-02007-000-0	DIODE FR602
BD4	090-10013-000-0	B/DIODE PBU605
BD3	090-10015-000-0	B/DIODE KBL06
LED2.5	100-00010-030-1	LED SE 3011 RED 3MM (HIGH LIGHT)
LED3.4	100-00050-110-0	LED EL204GT GREEN 3D HIGH LIGHT
LED1	100-00070-030-0	LED 204UBD D3 BLUE
Q5	120-00003-400-0	TRAN. 2SC2120 TOSHIBA
Q9.17	120-00009-900-0	TRAN TIP102ST
Q13.21	121-00007-600-0	TRAN. TIP107ST
IC5.6	160-00000-902-0	IC NJM 4558DD JRC
IC3	160-00001-219-0	IC 7812
IC4	160-00001-331-0	IC LM7912
IC7	160-00001-600-0	IC LM393N NS
IC1.2	160-00021-100-0	IC TDA7294
SW1.2	210-01202-050-0	SLD/SW SSFZ22-07
JK2.4	211-01602-550-0	6D3/J PJB0661-6
JK1.3	211-03400-003-0	XLR/J 91M-107P2
CON7A	211-10021-160-0	2P WAFER/S 2532-02 (PITCH2.5MM)

MAX250 MAIN BORD PCB-PART LIST

Ref.	Phonic	Specifications
R84.85	000-10336-400-0	CF RES.10K J 0.5W T
R86.87	000-18336-400-0	CF RES. 18K J 1/2W
R82.83	003-20073-602-0	CEMENT RES. 20 J 5W SQM
R41.42	003-56073-601-6	CEMENT RES.56J 5W
VR1.2	022-10330-150-0	S.ROT/VR 10KB 20MM P
C37.38.45-48	030-33866-031-0	E/C 3300UF 63V 30*26 P 105 DEGREE
L1.2.4.5	075-10081-100-0	INDUCTANCE 1UH J M 10MM
D5.11.17.21	090-00002-000-0	DIODE 1N4002 SILITEK
D6.12.18.22	090-02007-000-0	DIODE FR602
BD4	090-10013-000-0	B/DIODE PBU605
BD3	090-10015-000-0	B/DIODE KBL06
LED2.5	100-00010-030-1	LED SE 3011 RED 3MM (HIGH LIGHT)
LED3.4	100-00050-110-0	LED EL204GT GREEN 3D LIGH LIGHT
LED1	100-00070-030-0	LED 204UBD D3 BLUE
Q5	120-00003-400-0	TRAN. 2SC2120 TOSHIBA
Q9.17	120-00009-900-0	TRAN TIP102ST
Q13.21	121-00007-600-0	TRAN. TIP107ST
IC5.6	160-00000-902-0	IC NJM 4558DD JRC
IC3	160-00001-219-0	IC 7812
IC4	160-00001-331-0	IC LM7912
IC7	160-00001-600-0	IC LM393N NS
IC1.2	160-00021-100-0	IC TDA7294
SW1.2	210-01202-050-0	SLD/SW SSFZ22-07
JK2.4	211-01602-550-0	6D3/J PJB0661-6
JK1.3	211-03400-003-0	XLR/J 91M-107P2
CON7A	211-10021-160-0	2P WAFER/S 2532-02 (PITCH2.5MM)

MAX250 MAIN BORD PCB-PART LIST

Ref.	Phonic	Specifications
R84.85	000-10336-400-0	CF RES.10K J 0.5W T
R86.87	000-18336-400-0	CF RES. 18K J 1/2W
R82.83	003-20073-602-0	CEMENT RES. 20 J 5W SQM
R41.42	003-56073-601-6	CEMENT RES.56J 5W
VR1.2	022-10330-150-0	S.ROT/VR 10KB 20MM P
C37.38.45-48	030-33866-031-0	E/C 3300UF 63V 30*26 P 105 DEGREE
L1.2.4.5	075-10081-100-0	INDUCTANCE 1UH J M 10MM
D5.11.17.21	090-00002-000-0	DIODE 1N4002 SILITEK
D6.12.18.22	090-02007-000-0	DIODE FR602
BD4	090-10013-000-0	B/DIODE PBU605
BD3	090-10015-000-0	B/DIODE KBL06
LED2.5	100-00010-030-1	LED SE 3011 RED 3MM (HIGH LIGHT)
LED3.4	100-00050-110-0	LED EL204GT GREEN 3D HIGH LIGHT
LED1	100-00070-030-0	LED 204UBD D3 BLUE
Q5	120-00003-400-0	TRAN. 2SC2120 TOSHIBA
Q9.17	120-00009-900-0	TRAN TIP102ST
Q13.21	121-00007-600-0	TRAN. TIP107ST
IC5.6	160-00000-902-0	IC NJM 4558DD JRC
IC3	160-00001-219-0	IC 7812
IC4	160-00001-331-0	IC LM7912
IC7	160-00001-600-0	IC LM393N NS
IC1.2	160-00021-100-0	IC TDA7294
SW1.2	210-01202-050-0	SLD/SW SSFZ22-07
JK2.4	211-01602-550-0	6D3/J PJB0661-6
JK1.3	211-03400-003-0	XLR/J 91M-107P2

MAX250 MAIN BORD PCB-PART LIST

Ref.	Phonic	Specifications
CON7A	211-10021-160-0	2P WAFER/S 2532-02 (PITCH2.5MM)
CON5A.5B	211-10024-110-0	2P WAFER/S A3963WV2-2P
CON4A	211-10041-141-0	4P WAFER/S TJC3-4A PH=2.5MM 180DEGREE
CON1A	211-10054-050-6	5P WAFER/S PH=3.96
CON2A.3A	211-10061-171-0	6P WAFER/S TJC3-6A P=2.5mm
CON6	211-24503-000-0	5P SCREW/T GGC-10-01 (GREEN)
CON5	211-24903-000-0	9P SCREW/T GGC-10-01 (GREEN)
CON7B	212-10022-690-0	2P WAFER/P 180MM UL1007#24 PH=2.5MM
CON4B	212-10041-400-0	4P WAFER/P #28 RED L=300MM PH=2.5mm
	212-10054-000-0	5P WIRE/P #18 L=350MM PH=3.96mm
CONE2B.3B	212-10061-070-0	6P WAFER/P #28 BLUE L=300MM PH=2.5mm
FUSE1.2.3.4.5*2	281-00000-020-0	FUSE CLIP FH-1206
Q9.13.17.21.IC3.4	313-00000-000-0	TRANSISTOR WASHER TO-220
IC1.2	313-00000-050-0	TQ3A 29*22mm
IC1-4.Q9.13.17.21	314-00000-050-0	BUSHES 602S(V.0) 180DEGREE
AC1.2.3	315-00012-000-0	LUG PIN JP-15
CH.R OUT*1	380-60080-000-0	M.WIRE UL1617#18 150mm RED
CH.R GND	380-60081-000-0	M.WIRE UL1617#18 150mm BLK

MAX250 MISCELLANEOUS ITEMS

Ref.	Phonic	Specifications
	058-47236-001-0	LINE/C 0.0047MF M 400V
	070-23108-800-0	X'MER 115/230V MAX250
	210-03101-070-0	SSA/SW
CH1.2	211-17000-410-0	BINDING POST BP-47-2P
AC1	212-10010-820-0	1P WAFER/P 320MM BLUE
CON5B	212-10023-070-0	2P WAFER/P 230mm
	307-00000-000-0	CORD CONNECTOR HW-C4
	321-00000-070-0	CABLE TIE HW-100MM
POWER SW	380-60077-000-0	M.WIRE UL1617#18 300mm RED
AC2	380-60078-000-0	M.WIRE UL1617#18 300mm BRN
AC3	380-60079-000-0	M.WIRE UL1617#18 300mm GREEN
	510-61100-000-0	PANEL MAX250
	516-60035-000-0	TOP COV MAX250
	517-60065-000-0	BOT COVER MAX250/330
	518-20200-020-0	FUSE COV FH-IL POWERPOD1860
	525-20003-000-0	FEET D20*10.4(GL-4)
	527-11000-000-0	STR.REL BUSHING 6W3-4 R (6N3-4)
	540-20090-000-0	R/KNOB PA1100
	560-60390-000-0	CARTON MAX250
	561-60260-000-0	MAX250 G/B
	565-60091-000-0	POLYLON MAX250
	568-00003-000-0	PE PAGE #10 240*340*0.05
	568-60071-010-0	PE BAG 480*600*0.05
	572-00000-050-0	DRYER 5g

MAX250 MISCELLANEOUS ITEMS

Ref.	Phonic	Specifications
BOTTOM+HEATSINK*4	590-54008-200-0	M/E SET SCR. M4.0*8 BLK
XLS JACK*4	591-03008-200-0	T/P FLT SCR. D3.0*8 BLK
HEAT SINK&BOT COV*4	591-53012-200-0	T/P SET SCR. D3.0*12 BLK
HEATSINK&TOP COV*4		
FEET*4	610-00301-001-0	PLA. WAS. D3.0*D8*1.0 NI
	610-30300-501-0	TOOTH WAS. D3.0*D6.5*0.5 NI
R/KNOB	615-60036-620-0	BOSS H4.5 D3.2 3-4.5
	615-60067-620-0	BOSS 30.5+4 M3
	615-60068-620-0	BOSS 28.5+6 M3
	618-14180-662-0	SPEC FIXED PIN SR-2 WHT
AMP PCB*1	630-60058-450-0	PVC INSULATION
POWER PCB*1	630-60059-450-0	PVC INSULATION
	631-20019-000-0	HEMELON D30*D5.5*0.5MM
	631-60003-000-0	HEMECON 10*360MM
	510-61100-000-F	PANEL MAX250
	516-60035-000-F	TOP COVER MAX250
	517-60065-000-F	BOT COVER MAX250

MAX250 POWER REQUIREMENT CLASSIFICATION

Ref.	Phonic	Specifications
<u>BS</u>		
FUSE2.3	280-3E216-001-0	FUSE 3.15A/250V S BEL5ST3.15
FUSE2.3	280-63267-000-0	FUSE TSD6.3A 250V VDE/UL/CSES
	370-26B40-439-1	P/CORD 230V 13A 2m5 BS 3P
	573-10032-010-0	POWER LABEL (ONLY USED IN BS)
<u>SA</u>		
FUSE4.5	280-3E216-001-0	FUSE 3.15A/250V S BEL5ST3.15
FUSE2.3	280-63267-000-0	FUSE TSD6.3A 250V VDE/UL/CSES
	370-12020-829-0	P/CORD 240V 10A/250V 3P6F SA
<u>SAA</u>		
FUSE4.5	280-3E216-001-0	FUSE 3.15A/250V S BEL5ST3.15
FUSE2.3	280-63267-000-0	FUSE TSD6.3A 250V VDE/UL/CSES
	370-12640-631-6	P/CORD 15A/250V 3P 2.5M (1.0)SAA
<u>UL</u>		
F4.5	280-3E216-001-0	FUSE 3.15A/250V S BEL5ST3.15
FUSE1.2.3	280-63267-000-0	FUSE TSD6.3A 250V VDE/UL/CSES
	370-08010-733-0	P/CORD 125V10A 2.5M 1MM/3P UL/CSA
	573-60018-000-0	FUSE LABEL 12*2.5

MAX500 FRONT PANEL PCB-PART LIST

Ref.	Phonic	Specifications
VR1A 1B	022-10330-150-0	S.ROT/VR 10KB 20MM P
BD1.2	090-10000-000-0	B/DIODE PB154
LED2A.2B	100-00010-030-1	LED SE 3011 RED 3MM (HIGH LIGHT)
LED1A.1B	100-00040-030-0	LED EL204YT YEL
LED3A.3B	100-00050-110-0	LED EL204GT GREEN 3D HIGH LIGHT
CN4A-1-2	212-10080-420-0	8P WAFER/P 270mm
CN4B-1-2	212-10090-320-0	9P WAFER/P 270mm
	615-60004-620-0	LED BOSS L=13 LEDS=13
R11.27	000-10126-400-0	CF RES. 100 J 0.25W T
R59	000-18226-400-0	CF RES. 1K8 J 0.25W T
R56	000-39126-400-0	CF RES. 390 J 0.25W T
TR17.19	120-00000-800-0	TRAN. 2SC1815 GR TOSHIBA
	290-34340-300-0	PCB MAR-1 VR+LED

MAX500 POWER AMP. PCB-PART LIST

Ref.	Phonic	Specifications
R112.114.138.143	000-10126-400-0	
R116.121.123.137.130.131	000-10226-400-0	CF RES. 1K J 0.25W T
R102.122.128.150	000-10326-400-0	
R119	000-10426-400-0	CF RES. 100K J 0.25W T
R106.148	000-12326-400-0	CF RES. 12K J 0.25W T
R113.117.136.140	000-22226-400-0	
R111.144	000-27326-400-0	CF RES. 27K J 0.25W T
R107.154	000-33726-400-0	CF RES.3.3 1/4W T
R125.126	000-39226-400-0	CF RES. 3K9 J 0.25W T
R109.147	000-47026-400-0	CF RES. 47 J 0.25W T
R105.153	000-47126-400-0	CF RES. 470 J 0.25W T
R103.151	000-47326-400-0	CF RES. 47K J 0.25W T
R124.129	000-68326-400-0	CF RES. 68K J 0.25W T
R101.108.145.149	000-82226-400-0	
R127	006-49912-420-0	MF RES. 4K99 F 0.25W M
C115.116.119	030-10658-0A0-0	E/C 10MF Z 50V 5*11 T
C117	032-10636-000-0	NP E/C 10MF M 25V 6*11 P
C110.120	042-10144-050-0	C/C2 100PF J 100V 5T
C111	042-33024-050-0	C/C2 33PF J 50V 5 T
C103.129	042-47124-050-0	C/C2 470PF J 50V 5 T
C102.109.122.128	042-47144-050-0	C/C2 470PF J 100V 5T
C101.126	042-47225-000-0	C/C2 4700PF K 50V
C112.118	046-10204-060-0	M/C 0.001MF J 50V 5 T
C108.121	046-10214-060-0	M/C 0.001MF J 100V T
D104.116	090-01103-010-0	Z/DIODE 10V K 0.5W FAIRC
D109.110	090-01752-010-0	ZEN/DIODE 7V5 K 0.5W FAIRCH
D108.107.111.112	090-02000-020-0	DIODE 1N4148 T
	290-34341-100-0	PCB MAX500 POWER

MAX500 IN/OUT & POWER SUPPLY PCB-PART LIST

Ref.	Phonic	Specifications
R66	003-33003-601-0	CEMENT RES.330 5W U
R52.55	005-10127-400-0	MOF RES. 100OHMS K 2W T
C38.39.42.43	030-10636-0A0-0	E/C 10MF M 25V 5*11 T
C32-37	030-33866-030-0	E/C 3300UF M 63V 25*30 P
C31	058-68325-100-0	MEX-683K 0.068MF/250V 18*13.5 P=15
L1.2	075-10082-100-0	INDUCTANCE 1UH K M
RL1	076-01212-012-0	RELAY VB12MBU-5 TAKAMISAWA
D4.5.6	090-00002-001-0	DIODE 1N4002
BD4	090-10009-000-0	B/DIODE PBU805
BD3	090-10015-000-0	B/DIODE KBL06
LED4	100-00070-030-0	LED 204UBD D3 BLUE
	160-00000-902-0	IC NJM 4558DD JRC
IC4	160-00002-909-0	IC 7915
IC3	160-00005-909-0	IC 7815
SW1.2	210-01202-050-0	SLD/SW SSFZ22-07
J1B.2B	211-01602-550-0	6D3/J PJB0661-6
J1A.2A	211-03400-003-0	XLR/J 91M-107P2
CN5	211-10021-160-0	2P WAFER/S 2532-02 (PITCH2.5MM)
CN2A.2B	211-10024-110-0	2P WAFER/S A3963WV2-2P
CN2/4A.4B	211-10044-040-0	4P WAFER/S A3963WV2-4P
CN4A	211-10081-130-0	8P WAFER/S 2532-08 180DEGREE
CN4B	211-10091-130-0	9P WAFER/S 2532-09 PH=2.5MM 180DEGREE
PS1.PS3	211-24503-000-0	5P SCREW/T GGC-10-01 (GREEN)
PS2	211-24903-000-0	9P SCREW/T GGC-10-01 (GREEN)
	212-10010-580-0	1P WAFER/P 60MM RED

MAX500 IN/OUT & POWER SUPPLY PCB-PART LIST

Ref.	Phonic	Specifications
R58	000-10106-400-0	CF RES. 100 J 0.0625W T
R3.10.13.15	000-10206-400-0	CF RES. 1K J 0.0625W T
R31.37.46.60.62.9.14	000-10306-400-0	CF RES. 10K J 0.0625W T
R26.33.34.39.42	000-10326-400-0	CF RES. 10K J 0.25W T
R32.53	000-12326-400-0	CF RES. 12K J 0.25W T
R63	000-15426-400-0	CF RES. 150K J 0.25W T
R30.57	000-18226-400-0	CF RES. 1K8 J 0.25W T
R54	000-18306-400-0	CF RES. 18K J 0.0625W T
R20.38.47	000-22206-400-0	CF RES. 2K2 J 0.0625W T
R8.12	000-27306-400-0	CF RES. 27K J 0.0625W T
R28	000-33226-400-0	CF RES. 3K3 J 0.25W T
R35	000-33306-400-0	CF RES. 33K J 0.0625W T
R65	000-33326-400-0	CF RES. 33K J 0.25W T
R29.44	000-47206-400-0	CF RES 4.7K J 0.0625W T
R36.40	000-47306-400-0	CF RES. 47K J 0.0625W T
R6.7	000-82326-400-0	CF RES. 82K J 0.25W T
R1.2.4.5.18.21.22.25	006-15020-440-0	MF RES 15K F 0.0625W T
C25	030-10564-0A0-0	E/C 1MF J 63V 5*11 T
C19.26	030-10626-0A0-0	E/C 10MF M 16V 5*11 T
C44	030-10658-0A0-0	E/C 10MF Z 50V 5*11 T
C27	030-22538-000-0	E/C 2.2MF Z 25V 5*11 P
C9.13	030-22556-0A0-0	E/C 2.2MF M 50V T 5*11
C3.8.7.16	030-22628-0A0-0	E/C 22MF Z 16V 5*11 T
C18.22	030-22738-001-0	E/C 220MF Z 25V 10*15 P
C17.20	030-47556-0A0-0	E/C 4.7MF M 50V 5*11 T
C21	042-10325-050-0	C/C2 0.01MF K 50V T
C4.5.11.12	042-10426-050-0	C/C2 0.1MF M 50V 5 T
C1.2.14.15	042-22024-020-0	C/C2 22PF J 50V 5
C6.10	042-33024-001-0	C/C2 33PF J 50V 5
C29.30	046-22456-060-6	M/C 0.22UF 150V M T
D3	090-01512-000-0	ZEN/DIODE 5.1V J 0.5W
D1.2	090-02000-020-0	DIODE 1N4148 T
TR1.3-6. 8-10.13.15.16	120-00000-800-0	TRAN. 2SC1815 GR TOSHIBA
TR7.11.12	121-00000-200-0	TRAN. 2SA1015 GR TOSHIBA

MAX500 MISCELLANEOUS ITEMS

Ref.	Phonic	Specifications
CH1.2	070-23118-800-0	X'MER 115/230V MAR-1
	210-03101-070-0	SSA/SW
	211-17000-410-0	BINDING POST BP-47-2P
	212-10010-770-6	1P WAFER/P 1617#18 350mm RED
	212-10023-070-0	2P WAFER/P 230mm
	212-10023-080-0	2P WAFER/P 320mm
	212-10041-100-0	4P WAFER/P 250/350
	321-00000-070-0	CABLE TIE HW-100MM
POWER/SW*2	322-21500-400-6	TUBE 15MM*D4
	510-61230-100-0	PANEL MAX500
	516-20390-000-0	TOP COV MAR1 PHONIC
	517-60100-000-0	BOT COV MAX500
	525-20003-000-0	FEET D20*10.4(GL-4)
	540-20090-000-0	R/KNOB PA1100
	552-20048-420-0	ADHESIVE FIXED FW-5D-3M
	560-60380-000-0	CARTON MAX500 A=A T=6.5mm 564*440*375
	561-60250-100-0	MAX500 G/B
	565-60014-000-0	POLYLOR 150*410*87
	568-00003-000-0	PE PAGE #10 240*340*0.05
	568-30005-000-0	PE BAG 640*530*0.05
	572-00000-050-0	DRYER 5g
	573-60012-010-0	LABEL
	573-60013-000-0	"CE" LABEL
	573-60240-000-0	BAR CODE LABEL PHONIC
	573-60343-000-0	LABEL LEVEL METER LABEL BLUE D=8mm
	574-6A134-010-0	OWN. MANU. MAX500
579-00000-068-0	MINI CATALOG PHONIC SERIES	
PANEL&BOT COV*4	590-04010-200-0	M/E FLT SCR. M4.0*10 BLK
PCB*14	590-43006-100-0	M/E PAN SCR. M3.0*6

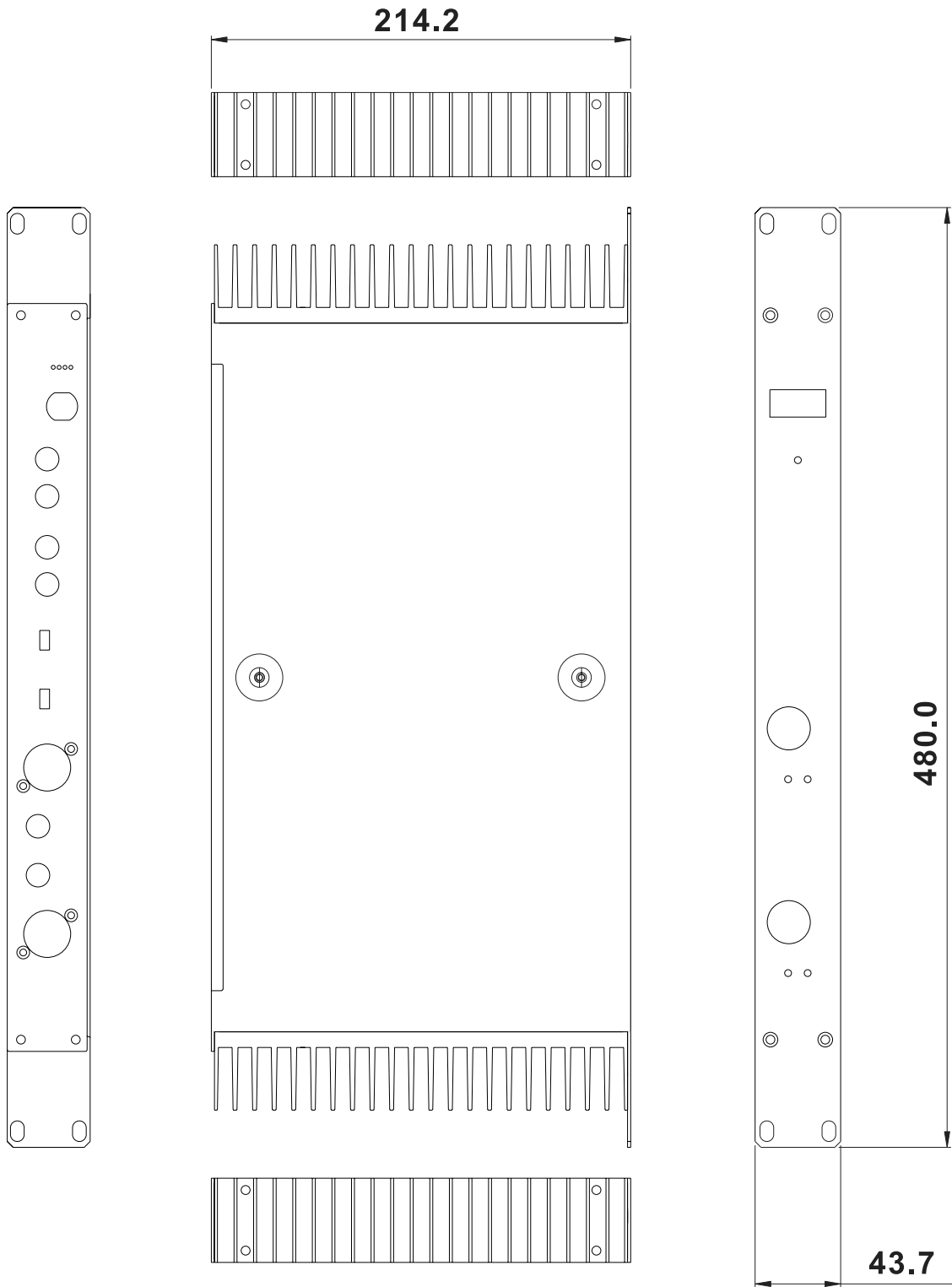
MAX500 MISCELLANEOUS ITEMS

Ref.	Phonic	Specifications
	618-14180-662-0	SPEC FIXED PIN SR-2 WHT
	630-60021-411-0	MYLAR INSU 45*15*0.4mm
	630-60057-450-0	PVC INSULATION
	631-20019-000-0	HEMELON D30*D5.5*0.5MM
	631-60003-000-0	HEMECON 10*360MM
	510-61230-000-F	PANEL MAX500
	516-20390-000-F	TOP COV MAR1
	517-60100-000-F	BOT COV MAX500

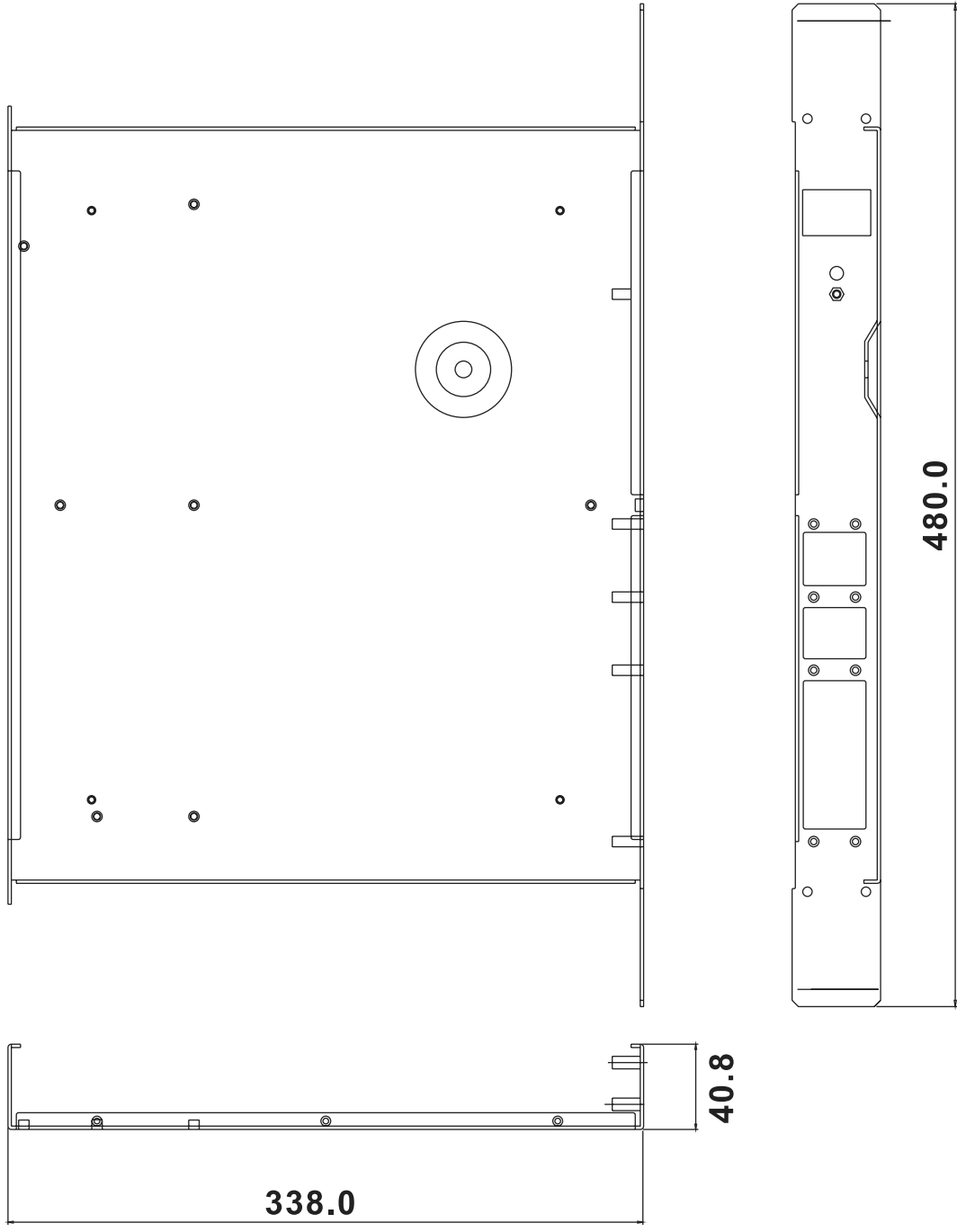
MAX500 POWER REQUIREMENT CLASSIFICATION

Ref.	Phonic	Specifications
<u>BS</u>		
FUSE1-4	280-3E216-001-0	FUSE 3.15A/250V S BEL5ST3.15
FUSE1-4	280-63267-000-0	FUSE TSD6.3A 250V VDE/UL/CSES
	370-26B40-439-1	P/CORD 230V 13A 2m5 BS 3P
	527-11000-000-0	STR.REL BUSHING 6W3-4 R (6N3-4)
	573-10032-010-0	POWER LABEL (ONLY USED IN BS)
	619-06380-320-0	PLA RIVET SR-3L BLACK
FUSE1-4	280-3E216-001-0	FUSE 3.15A/250V S BEL5ST3.15
FUSE1-4	280-63267-000-0	FUSE TSD6.3A 250V VDE/UL/CSES
	370-12020-829-0	P/CORD 240V 10A/250V 3P6F SA
	527-11000-000-0	STR.REL BUSHING 6W3-4 R (6N3-4)
	619-06380-320-0	PLA RIVET SR-3L BLACK
<u>SAA</u>		
	619-06380-320-0	PLA RIVET SR-3L BLACK
FUSE5	280-3E216-001-0	FUSE 3.15A/250V S BEL5ST3.15
FUSE1-4	280-63267-000-0	FUSE TSD6.3A 250V VDE/UL/CSES
	370-12640-631-6	P/CORD 15A/250V 3P 2.5M (1.0)SAA STR.REL BUSHING 6W3-4 R (6N3-4)
<u>UL</u>		
FUSE1-5	280-63267-000-0	FUSE TSD6.3A 250V VDE/UL/CSES
	370-08010-733-0	P/CORD 125V10A 2.5M 1MM/3P UL/CSA
	527-11000-000-0	STR.REL BUSHING

MAX250 DIMENSIONS



MAX500 DIMENSIONS



PHONIC
WWW.PHONIC.COM