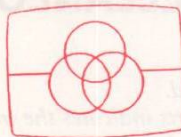




Service Manual



Free service manuals
Gratis schema's
Digitized by

www.freeservicemanuals.info

ORDER NO.
ARP2033

STEREO AMPLIFIER

A-757 MARK II

HEWZ, HE, HB

- Refer to the service manual ARP1816, A-757/HEZ type.
- This manual is applicable to the A-757 mark II /HEWZ, HE and HB types.)

not available

PIONEER ELECTRONIC CORPORATION 4-1, Meguro 1-Chome, Meguro-ku, Tokyo 153, Japan
PIONEER ELECTRONICS SERVICE INC. P.O. Box 1760, Long Beach, California 90801 U.S.A.
PIONEER ELECTRONICS OF CANADA, INC. 505 Cochrane Drive, Markham, Ontario L3R 8E3 Canada
PIONEER ELECTRONIC [EUROPE] N.V. Keetberglaan 1, 2740 Beveren, Belgium
PIONEER ELECTRONICS AUSTRALIA PTY. LTD. 178-184 Boundary Road, Braeside, Victoria 3195, Australia TEL: [03] 580-9911

1. CONTRAST OF MISCELLANEOUS PARTS

NOTES:

- Parts without part number cannot be supplied.
- The Δ mark found on some component parts indicates the importance of the safety factor of the part. Therefore, when replacing, be sure to use parts of identical designation.
- Parts marked by "⊙" are not always kept in stock. Their delivery time may be longer than usual or they may be unavailable.

The A-757 mark II /HEWZ, HE and HB types are the same as the A-757/HEZ type with the exception of the following sections.

Mark	Symbol & Description	Part No.				Remarks
		A-757/HEZ type	A-757mark II / HEWZ type	A-757mark II / HE type	A-757mark II / HB type	
	REC OUT assembly	Non supply	Non supply	Non supply	Non supply	
	INPUT SELECTOR assembly	AWZ2347	AWZ2347	AWZ2453	AWZ2453	
	POWER AMP assembly	AWZ2330	AWZ2330	AWZ2447	AWZ2447	
	POWER SUPPLY assembly	AWZ2331	AWZ2331	AWZ2448	AWZ2448	
	SPEAKER TERMINAL assembly	AWZ2332	AWZ2332	AWZ2449	AWZ2449	
	PHONO AMP assembly	AWZ2333	AWZ2333	AWZ2450	AWZ2450	
	HEAD PHONE assembly	Non supply	Non supply	Non supply	Non supply	
Δ	T1 Power transformer	ATS1208	ATS1285	ATS1285	ATS1285	
Δ	T2 Power transformer	ATS1209	ATS1286	ATS1286	ATS1286	
Δ	FU1 Fuse (T4A/250V)	AEK-400	AEK-400	AEK-400	
Δ	FU4 Fuse (T4A/250V)	AEK-514	
	C1,C2 Ceramic capacitor	CKDYB472K50	
	C3	ACH1045	ACH1154	ACH1154	ACH1154	
	R1	RD1/4PM4R7J	RD1/4PM4R7J	
	R2	RD1/4PM100J	RD1/4PM100J	
Δ	AC Power cord	ADG1049	ADG1049	ADG1049	ADG1052	
	Front panel	ANB1294	ANB1377	ANB1377	ANB1377	
	Panel base	AMB1200	AMB1628	AMB1628	AMB1628	
	Rotary knob L	AAB1107	AAB1126	AAB1126	AAB1126	
	Rotary knob M	AAB1108	AAB1127	AAB1127	AAB1127	
	Rotary knob S	AAB1109	AAB1143	AAB1143	AAB1143	
	Packing case	AHD1632	AHD1815	AHD1815	AHD1815	
	Operating instructions (German)	ARC1146	ARC1184	
	Operating instructions (English/German/French/Italian/Swedish/Dutch/Spanish/Portuguese)	ARE1148	
	Operating instructions (English)	ARB1229	

REC OUT assembly
 The REC OUT assembly (HE and HB types) is the same as the REC OUT assembly (HEZ and HEWZ types) with the exception of the following sections.

Mark	Symbol & Description	Part No.		Remarks
		HEWZ, HEZ types	HE and HB types	
C803-C814		CKCYB331K50	
R803-R806, R811, R812		RD1/4PM182J	RD1/4PM222J	
R807, R808		RD1/8PM182J	RD1/8PM222J	
R809, R810		RD1/8PM221J	
R813, R814		RD1/4PM221J	

INPUT SELECTOR assembly (AWZ2453)
 The INPUT SELECTOR assembly (AWZ2453) is the same as the INPUT SELECTOR assembly (AWZ2347) with the exception of the following sections.

Mark	Symbol & Description	Part No.		Remarks
		AWZ2347	AWZ2453	
C701-C704, C707-C710		CKCYB331K50	
C705, C706		CKCYP331K500	

POWER AMP assembly (AWZ2447)
 The POWER AMP assembly (AWZ2447) is the same as the POWER AMP assembly (AWZ2330) with the exception of the following sections.

Mark	Symbol & Description	Part No.		Remarks
		AWZ2330	AWZ2447	
C113, C114		CCCSL271J50	CKCYB561K50	
C139-C142		CCCSL221J50	
C157, C158		CKCYB331K50	
C155		CCDSL151J50	
R245, R246		RDR1/4PM100J	
R227-R230		ACN1063	ACN-139	

POWER SUPPLY assembly (AWZ2448)
 The POWER SUPPLY assembly (AWZ2448) is the same as the POWER SUPPLY assembly (AWZ2331) with the exception of the following sections.

Mark	Symbol & Description	Part No.		Remarks
		AWZ2331	AWZ2448	
C615		COMXA104J100	ACG1005	
R609, R610		RD1/4PM101J	△ RFA/4PS221J	
R611, R612		RFA1/4PS221J	RD1/4PM101J	
R626		RD1/4PM221J	△ RFA1/4PS221J	
R630		△ RFA1/4PS470J	

SPEAKER TERMINAL assembly (AWZ2449)
 The SPEAKER TERMINAL assembly (AWZ2449) is the same as the SPEAKER TERMINAL assembly (AWZ2332) with the exception of the following sections.

Mark	Symbol & Description	Part No.		Remarks
		AWZ2332	AWZ2449	
C905-C908		COMXA472J100	
C909, C910		CCDSL101K500	
SPEAKER TERMINAL		AKE1015	AKE1017	

PHONO AMP assembly (AWZ2450)
 The PHONO AMP assembly (AWZ2450) is the same as the PHONO AMP assembly (AWZ2333) with the exception of the following sections.

Mark	Symbol & Description	Part No.		Remarks
		AWZ2333	AWZ2450	
L501, L502 (270µH)		ATH1010	
L503, L504		LAU2R2M	
C505, C506		CCCSL221K500	CCCSL271K500	
C523, C524		CCDSL390J50	
R505, R506		RD1/8PM272J	

HEAD PHONE assembly
 The HEAD PHONE assembly (HE and HB types) is the same as the HEAD PHONE assembly (HEZ and HEWZ types) with the exception of the following sections.

Mark	Symbol & Description	Part No.		Remarks
		HEWZ, HEZ types	HE and HB types	
C951, C952		CKCYB392K50	

Line Voltage Selection

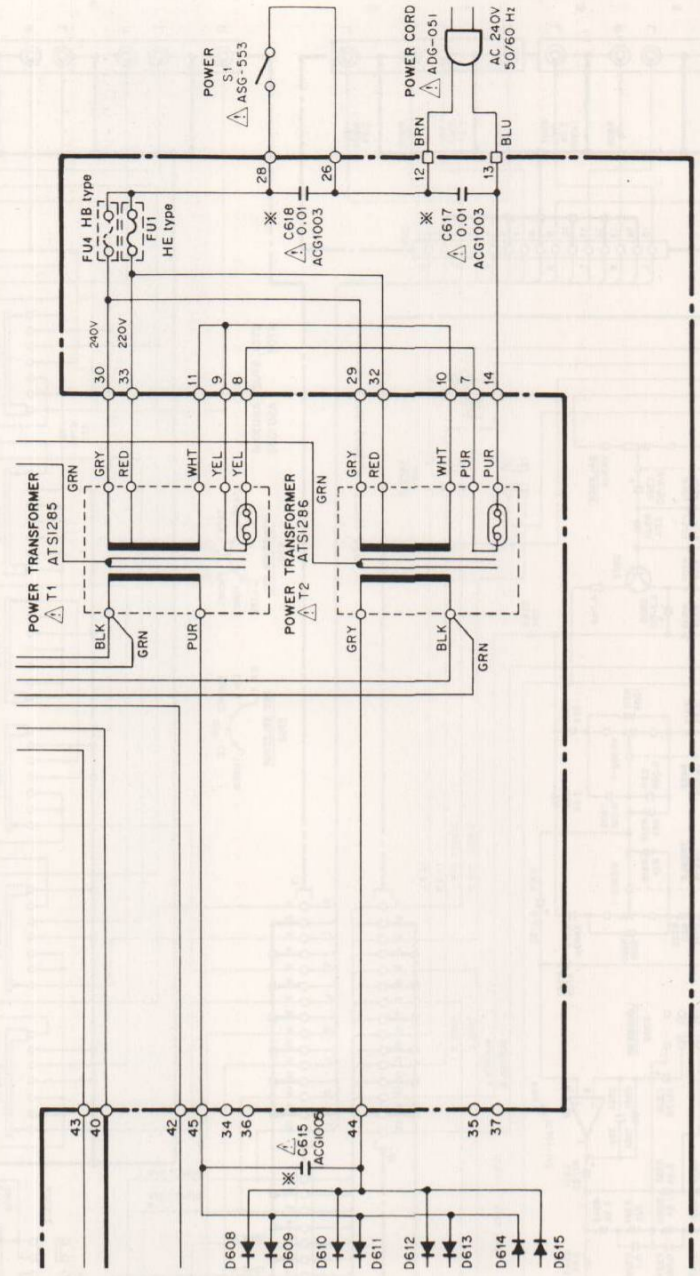
Line voltage can be changed with following steps.

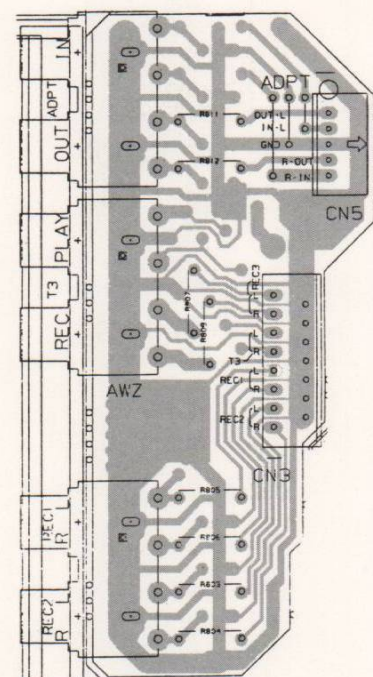
1. Disconnect the AC power cord.
2. Remove the top cover.
3. Change the position of the fuse in the POWER SUPPLY assembly as follows.

AC voltage	PCB position to instal
220V	FU1
240V	FU4

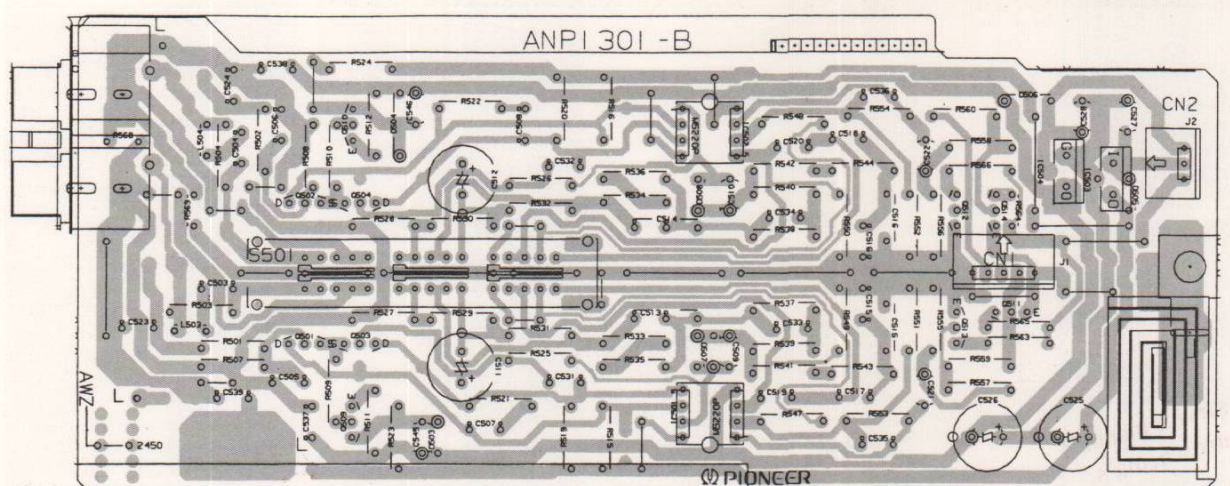
4. Stick the line voltage label on the rear panel.

Part No.	Description
AAX-193	220V label
AAX-192	240V label

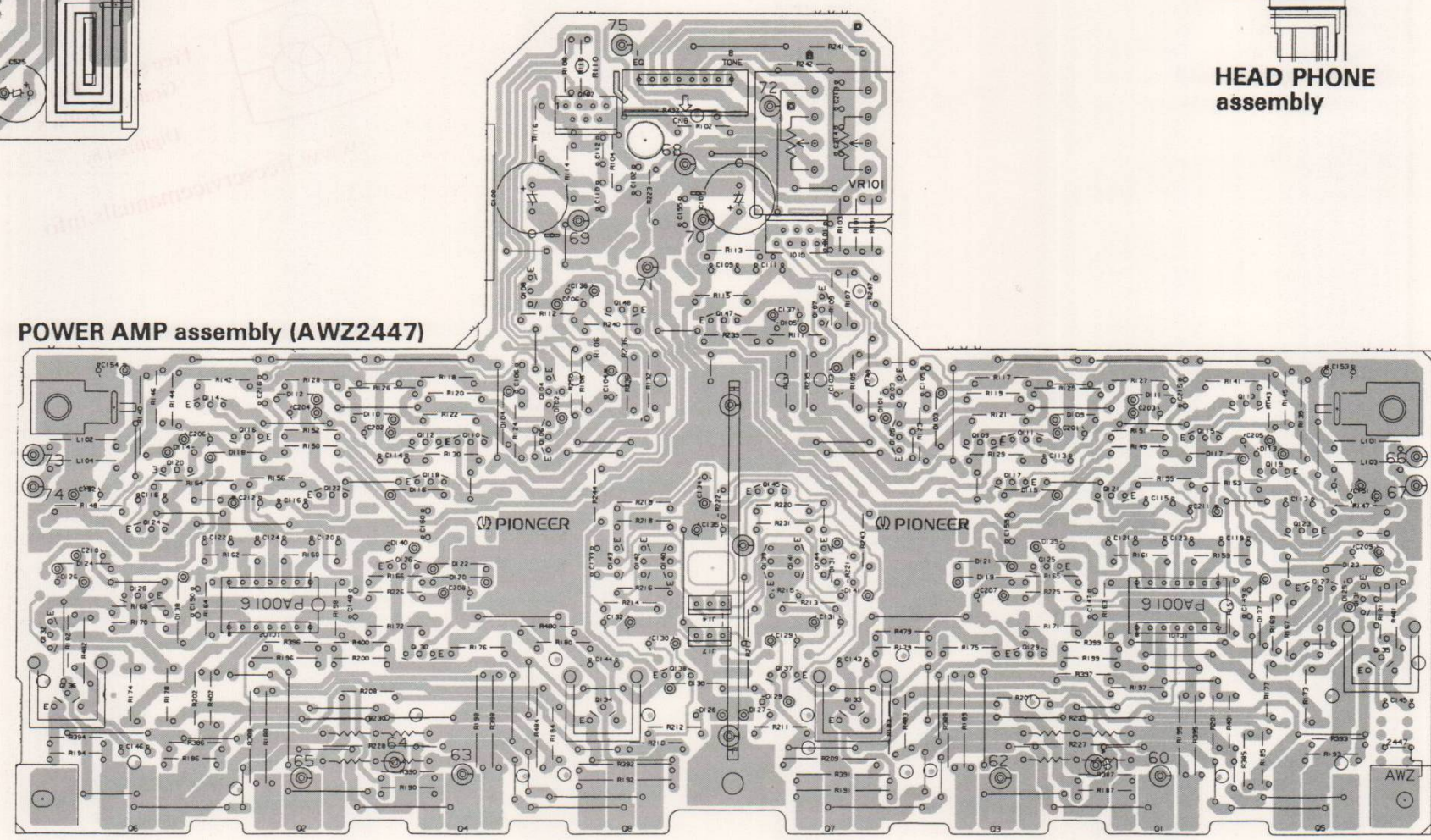




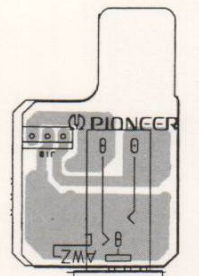
REC OUT assembly



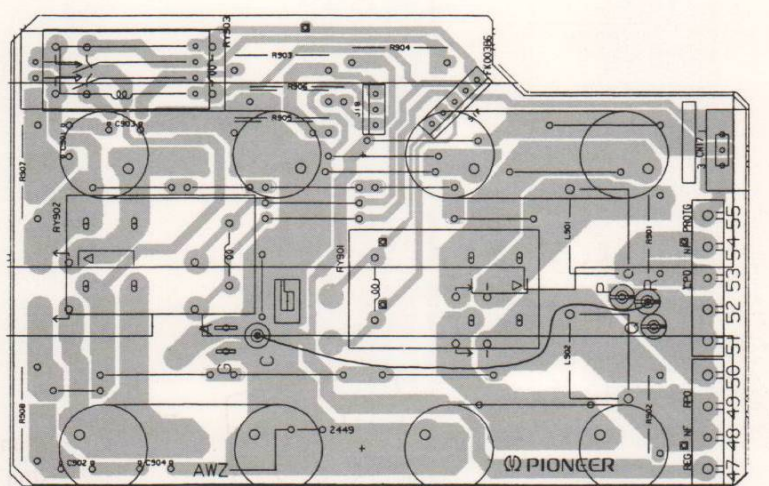
PHONO AMP assembly (AWZ2450)



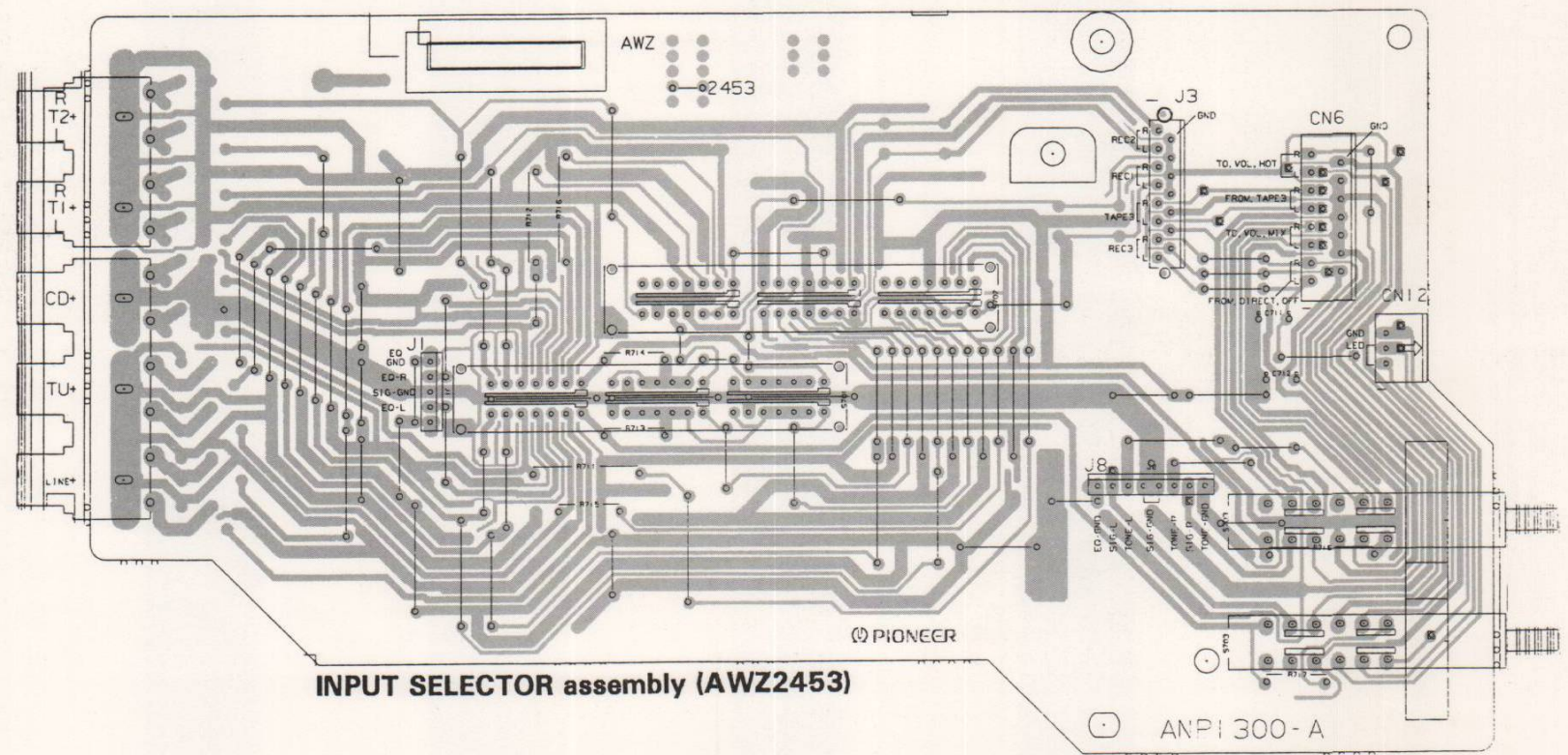
POWER AMP assembly (AWZ2447)



HEAD PHONE assembly



SPEAKER TERMINAL assembly (AWZ2449)



INPUT SELECTOR assembly (AWZ2453)

- Q108 Q106 Q102 Q148 Q147 Q105 Q101 Q107
- Q103 Q105 Q103 Q109 Q111 Q109 D111 Q115 Q117 Q113 Q113 Q119
- D126 D124 Q124 Q122 D140 Q126 Q116 Q118 Q143 Q142 Q140 Q145 Q139 Q141 Q144 D131 D121 D119 Q117 D139 Q125 Q121 Q123 Q127 D123
- Q132 Q136 Q128 D138 IC102 Q130 D122 D120 Q134 Q138 D130 D128 D127 D129 Q137 D141 Q133 Q129 IC101 D137 D125 Q131 Q135

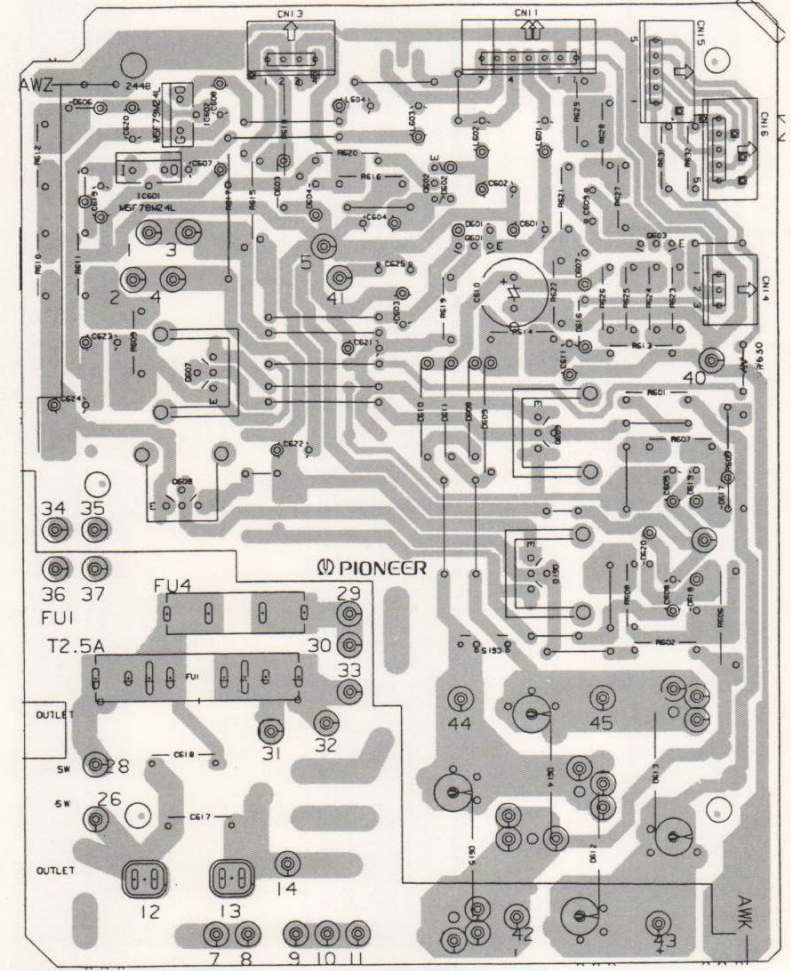
NOTE

1. This P.C.B connection diagram is viewed from the parts mounted side.
2. The parts which have been mounted on the board can be replaced with those shown with the corresponding wiring symbols listed in the following Table.

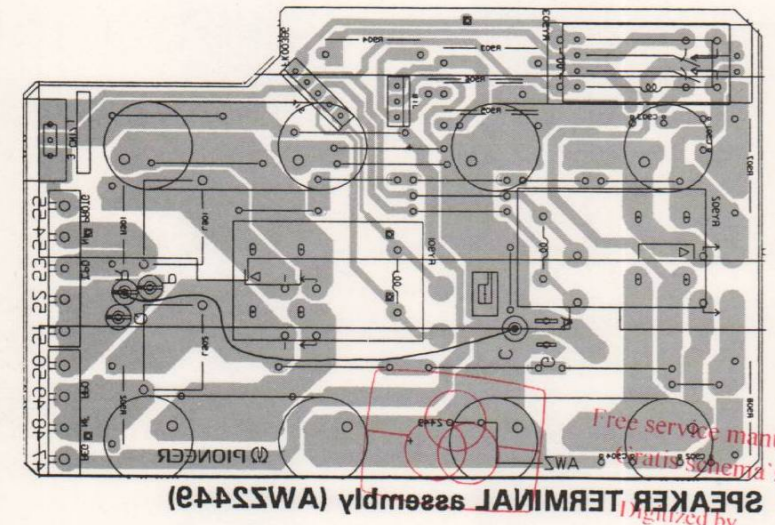
P.C.B. pattern diagram indication	Corresponding part symbol	Part Name
		Transistor
		Radiator type transistor
		Diode
		Resistor
		Capacitor (Polarity)
		Capacitor (Non-polarity)

P.C.B. pattern diagram indication	Part Name
IC	IC
S	Switch
RY	Relay
L	Coil
F	Filter
VR	Variable resistor or Semi-fixed resistor

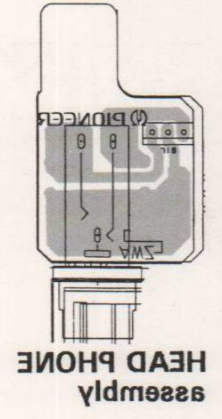
3. The capacitor terminal marked with ⊕ (double circles) shows negative terminal.
4. The diode terminal marked with ⊕ (double circles) shows cathode side.
5. The transistor terminal to which E is affixed shows the emitter.



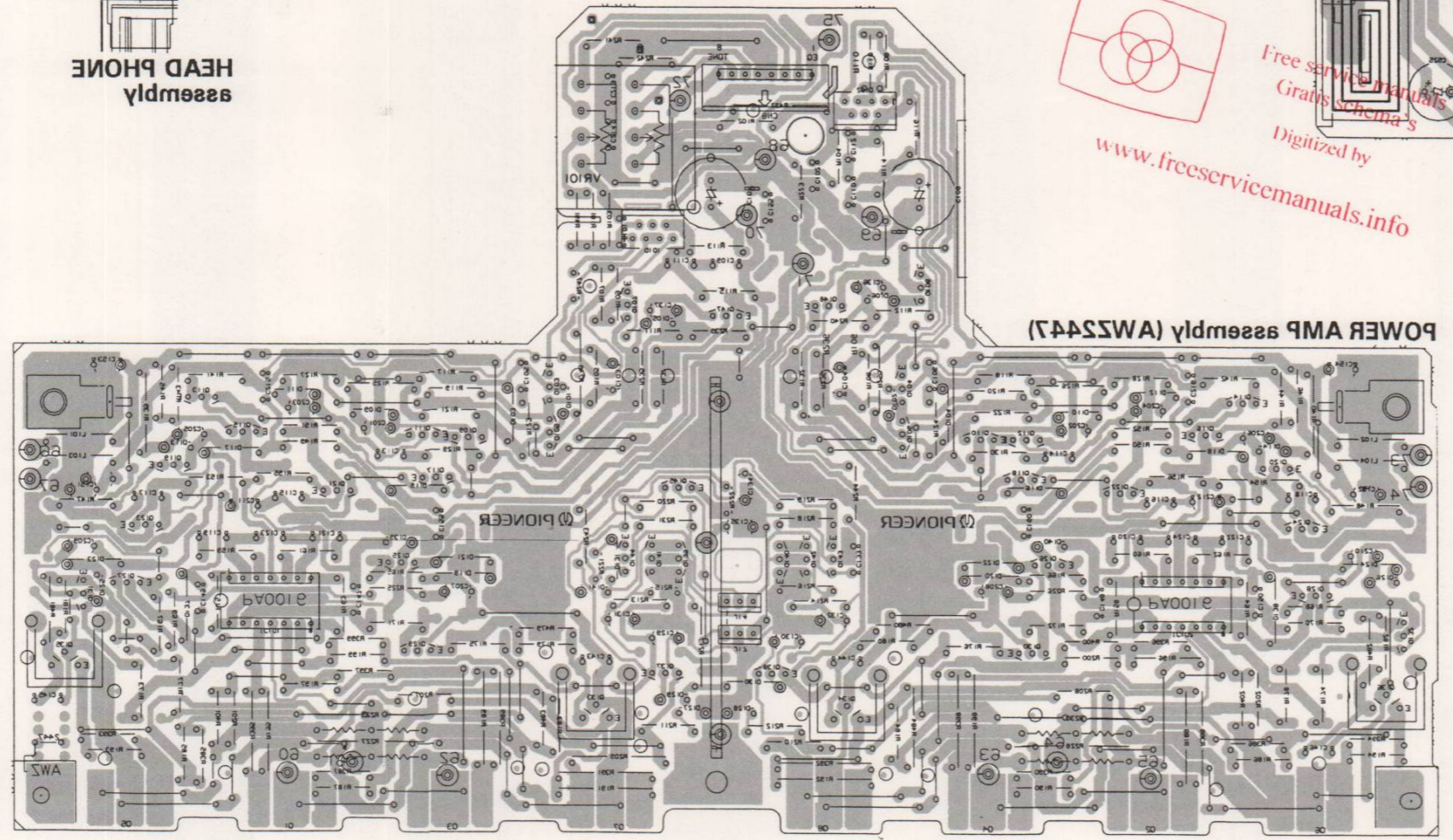
POWER SUPPLY assembly (AWZ2448)



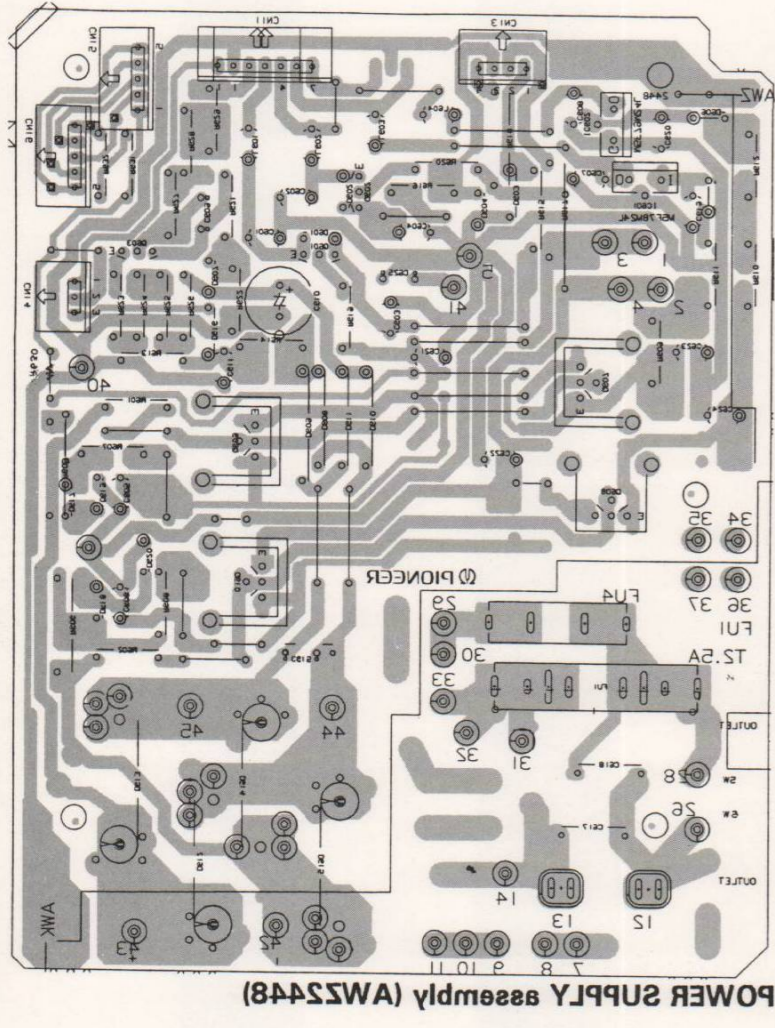
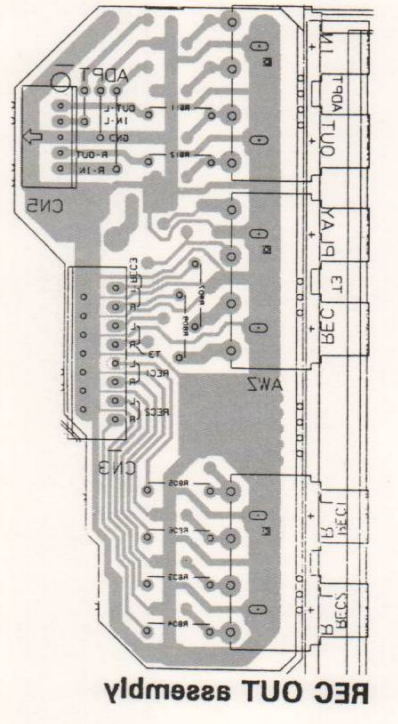
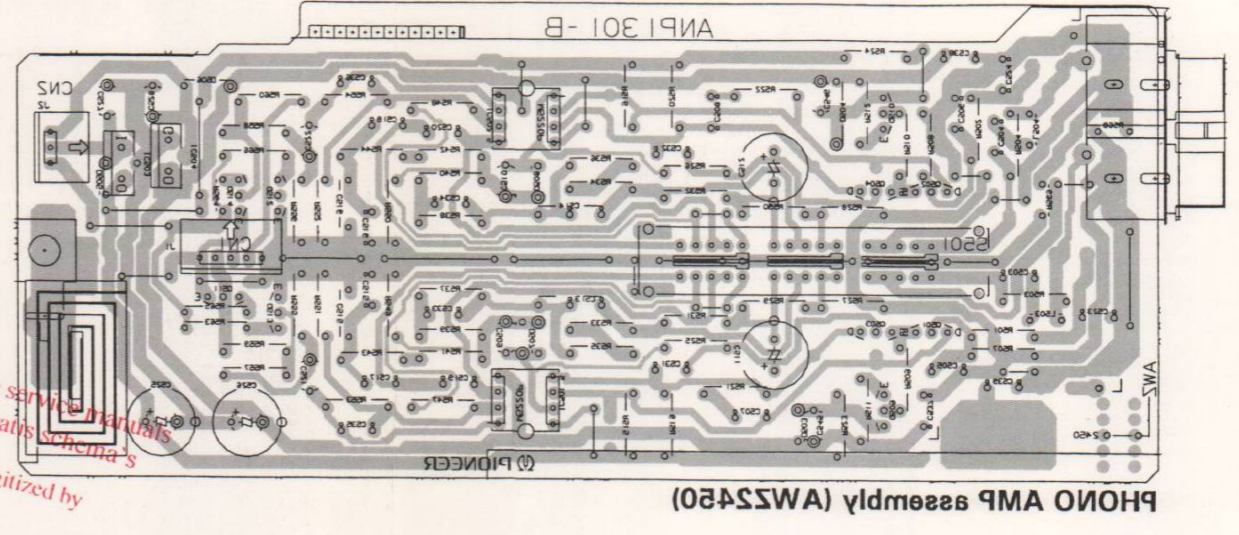
Free service manuals
 and repair guides
 by www.freesevice manuals.info



NOTE:
 This picture shows the foil side of the printed circuit.



Free service manuals
 and repair guides
 by www.freesevice manuals.info



0125 0126 0128 0129 IC105
 0129 0130 0131 0132 0133 0134 0135 0136 0137 0138 0139 0140 0141 0142 0143 0144 0145 0146 0147 0148 0149 0150
 0151 0152 0153 0154 0155 0156 0157 0158 0159 0160 0161 0162 0163 0164 0165 0166 0167 0168 0169 0170
 0171 0172 0173 0174 0175 0176 0177 0178 0179 0180 0181 0182 0183 0184 0185 0186 0187 0188 0189 0190
 0191 0192 0193 0194 0195 0196 0197 0198 0199 0200 0201 0202 0203 0204 0205 0206 0207 0208 0209 0210
 0211 0212 0213 0214 0215 0216 0217 0218 0219 0220 0221 0222 0223 0224 0225 0226 0227 0228 0229 0230
 0231 0232 0233 0234 0235 0236 0237 0238 0239 0240 0241 0242 0243 0244 0245 0246 0247 0248 0249 0250
 0251 0252 0253 0254 0255 0256 0257 0258 0259 0260 0261 0262 0263 0264 0265 0266 0267 0268 0269 0270
 0271 0272 0273 0274 0275 0276 0277 0278 0279 0280 0281 0282 0283 0284 0285 0286 0287 0288 0289 0290
 0291 0292 0293 0294 0295 0296 0297 0298 0299 0300 0301 0302 0303 0304 0305 0306 0307 0308 0309 0310
 0311 0312 0313 0314 0315 0316 0317 0318 0319 0320 0321 0322 0323 0324 0325 0326 0327 0328 0329 0330
 0331 0332 0333 0334 0335 0336 0337 0338 0339 0340 0341 0342 0343 0344 0345 0346 0347 0348 0349 0350
 0351 0352 0353 0354 0355 0356 0357 0358 0359 0360 0361 0362 0363 0364 0365 0366 0367 0368 0369 0370
 0371 0372 0373 0374 0375 0376 0377 0378 0379 0380 0381 0382 0383 0384 0385 0386 0387 0388 0389 0390
 0391 0392 0393 0394 0395 0396 0397 0398 0399 0400 0401 0402 0403 0404 0405 0406 0407 0408 0409 0410
 0411 0412 0413 0414 0415 0416 0417 0418 0419 0420 0421 0422 0423 0424 0425 0426 0427 0428 0429 0430
 0431 0432 0433 0434 0435 0436 0437 0438 0439 0440 0441 0442 0443 0444 0445 0446 0447 0448 0449 0450
 0451 0452 0453 0454 0455 0456 0457 0458 0459 0460 0461 0462 0463 0464 0465 0466 0467 0468 0469 0470
 0471 0472 0473 0474 0475 0476 0477 0478 0479 0480 0481 0482 0483 0484 0485 0486 0487 0488 0489 0490
 0491 0492 0493 0494 0495 0496 0497 0498 0499 0500 0501 0502 0503 0504 0505 0506 0507 0508 0509 0510
 0511 0512 0513 0514 0515 0516 0517 0518 0519 0520 0521 0522 0523 0524 0525 0526 0527 0528 0529 0530
 0531 0532 0533 0534 0535 0536 0537 0538 0539 0540 0541 0542 0543 0544 0545 0546 0547 0548 0549 0550
 0551 0552 0553 0554 0555 0556 0557 0558 0559 0560 0561 0562 0563 0564 0565 0566 0567 0568 0569 0570
 0571 0572 0573 0574 0575 0576 0577 0578 0579 0580 0581 0582 0583 0584 0585 0586 0587 0588 0589 0590
 0591 0592 0593 0594 0595 0596 0597 0598 0599 0600 0601 0602 0603 0604 0605 0606 0607 0608 0609 0610
 0611 0612 0613 0614 0615 0616 0617 0618 0619 0620 0621 0622 0623 0624 0625 0626 0627 0628 0629 0630
 0631 0632 0633 0634 0635 0636 0637 0638 0639 0640 0641 0642 0643 0644 0645 0646 0647 0648 0649 0650
 0651 0652 0653 0654 0655 0656 0657 0658 0659 0660 0661 0662 0663 0664 0665 0666 0667 0668 0669 0670
 0671 0672 0673 0674 0675 0676 0677 0678 0679 0680 0681 0682 0683 0684 0685 0686 0687 0688 0689 0690
 0691 0692 0693 0694 0695 0696 0697 0698 0699 0700 0701 0702 0703 0704 0705 0706 0707 0708 0709 0710
 0711 0712 0713 0714 0715 0716 0717 0718 0719 0720 0721 0722 0723 0724 0725 0726 0727 0728 0729 0730
 0731 0732 0733 0734 0735 0736 0737 0738 0739 0740 0741 0742 0743 0744 0745 0746 0747 0748 0749 0750
 0751 0752 0753 0754 0755 0756 0757 0758 0759 0760 0761 0762 0763 0764 0765 0766 0767 0768 0769 0770
 0771 0772 0773 0774 0775 0776 0777 0778 0779 0780 0781 0782 0783 0784 0785 0786 0787 0788 0789 0790
 0791 0792 0793 0794 0795 0796 0797 0798 0799 0800 0801 0802 0803 0804 0805 0806 0807 0808 0809 0810
 0811 0812 0813 0814 0815 0816 0817 0818 0819 0820 0821 0822 0823 0824 0825 0826 0827 0828 0829 0830
 0831 0832 0833 0834 0835 0836 0837 0838 0839 0840 0841 0842 0843 0844 0845 0846 0847 0848 0849 0850
 0851 0852 0853 0854 0855 0856 0857 0858 0859 0860 0861 0862 0863 0864 0865 0866 0867 0868 0869 0870
 0871 0872 0873 0874 0875 0876 0877 0878 0879 0880 0881 0882 0883 0884 0885 0886 0887 0888 0889 0890
 0891 0892 0893 0894 0895 0896 0897 0898 0899 0900 0901 0902 0903 0904 0905 0906 0907 0908 0909 0910
 0911 0912 0913 0914 0915 0916 0917 0918 0919 0920 0921 0922 0923 0924 0925 0926 0927 0928 0929 0930
 0931 0932 0933 0934 0935 0936 0937 0938 0939 0940 0941 0942 0943 0944 0945 0946 0947 0948 0949 0950
 0951 0952 0953 0954 0955 0956 0957 0958 0959 0960 0961 0962 0963 0964 0965 0966 0967 0968 0969 0970
 0971 0972 0973 0974 0975 0976 0977 0978 0979 0980 0981 0982 0983 0984 0985 0986 0987 0988 0989 0990
 0991 0992 0993 0994 0995 0996 0997 0998 0999 1000

