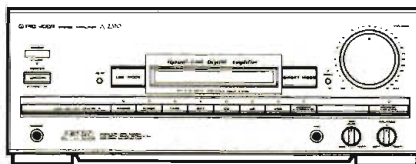


Service Manual



ORDER NO.
ARP2158

STEREO AMPLIFIER

A-Z370

MODEL A-Z370 HAS FOLLOWING VERSIONS :

Type	Power requirement	Export destination
HE	AC220V, 240V(switchable) *	European continent
HB	AC220V, 240V(switchable) *	United Kingdom
HEWZIW	AC220V, 240V(switchable) *	Germany and Italy
SD	AC110V,120V-127V, 220V, 240V(switchable)	Kingdom of Saudi Arabia and general market

* : Change the primary wiring.

- This manual is applicable to the A-Z370/HE, HB and HEWZIW types.
- As to the HB and HEWZIW types, refer to page 37.
- As to the other types, refer to applicable service manuals.
- This product is a component of a system. As to the system composition, refer to the system manual.
- This product does not function properly when independent ; to avoid malfunctions, be sure to connect it to the prescribed system component, otherwise damage may result.

CONTENTS

1. SPECIFICATIONS	2	4. SCHEMATIC DIAGRAMS AND P.C.BOARD	
2. EXPLODED VIEWS, PACKING AND PARTS LIST	3	CONNECTION DIAGRAMS	11
3. P.C.B's PARTS LIST	7	5. FOR HB AND HEWZIW TYPES	37
		6. PANEL FACILITIES	51

PIONEER ELECTRONIC CORPORATION 4-1, Meguro 1-Chome, Meguro-ku, Tokyo 153, Japan

PIONEER ELECTRONICS SERVICE INC. P.O. Box 1760, Long Beach, California 90801 U.S.A.

PIONEER ELECTRONICS OF CANADA, INC. 505 Cochrane Drive, Markham, Ontario L3R 8E3 Canada

PIONEER ELECTRONIC [EUROPE] N.V. Keetberglaan 1, 2740 Beveren, Belgium

PIONEER ELECTRONICS AUSTRALIA PTY. LTD. 178-184 Boundary Road, Braeside, Victoria 3195, Australia TEL: [03] 580-9911

© PIONEER ELECTRONIC CORPORATION 1991

FV JAN. 1991 Printed in Japan

1. SPECIFICATIONS

Continuous Power Output (DIN)	60 W + 60 W (1 kHz, T.H.D. 1 %, 8 Ω)
Music power (DIN)	100 W + 100 W (1 kHz, T.H.D. 1 %, 8 Ω)
D/A converter section	
Signal-to-Noise Ratio	More than 96 dB (EIAJ)
Dinamic range	More than 94 dB (EIAJ)
Frequency range	25 Hz to 20 kHz
Total Harmonic Distortion (1 kHz, 30 W, 8 Ω)	No more than 0.06 % **
Input sensitivity	
PHONO (MM)	2.5 mV
VCR	150 mV
LD	250 mV
Output level	
DAT, VCR	150 mV
MUTING	- ∞

Power Supply/Miscellaneous

Power requirements	a.c.240 Volts ~ , 50/60 Hz
Power consumption	300 W
AC outlets switched (x 1)	50 W
Dimensions	360 (W) x 343 (D) x 135.5 (H) mm
Weight (without package)	8.2 kg

Accessories

Operating instructions	1
Remote control unit	1
Dry cell batteries "AAA" (IEC R03/UM-4)	1

** Measured By Audio Spectrum Analyzer.

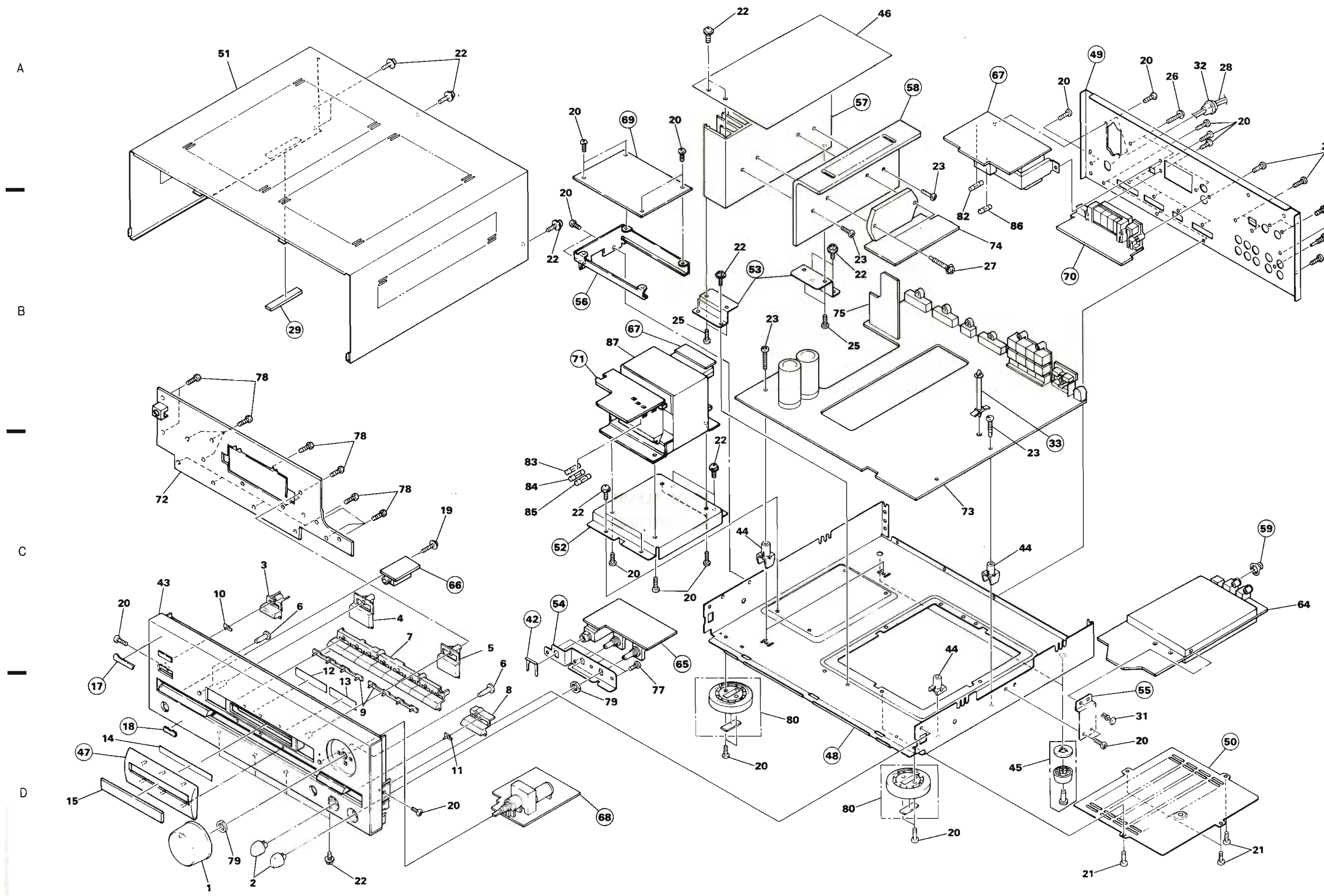
2. EXPLODED VIEWS, PACKING AND PARTS LIST

- NOTES:**
- Parts without part number cannot be supplied.
 - Parts marked by "⊙" are not always kept in stock. Their delivery time may be longer than usual or they may be unavailable.
 - The Δ mark found on some component parts indicates the importance of the safety factor of the part. Therefore, when replacing, be sure to use parts of identical designation.

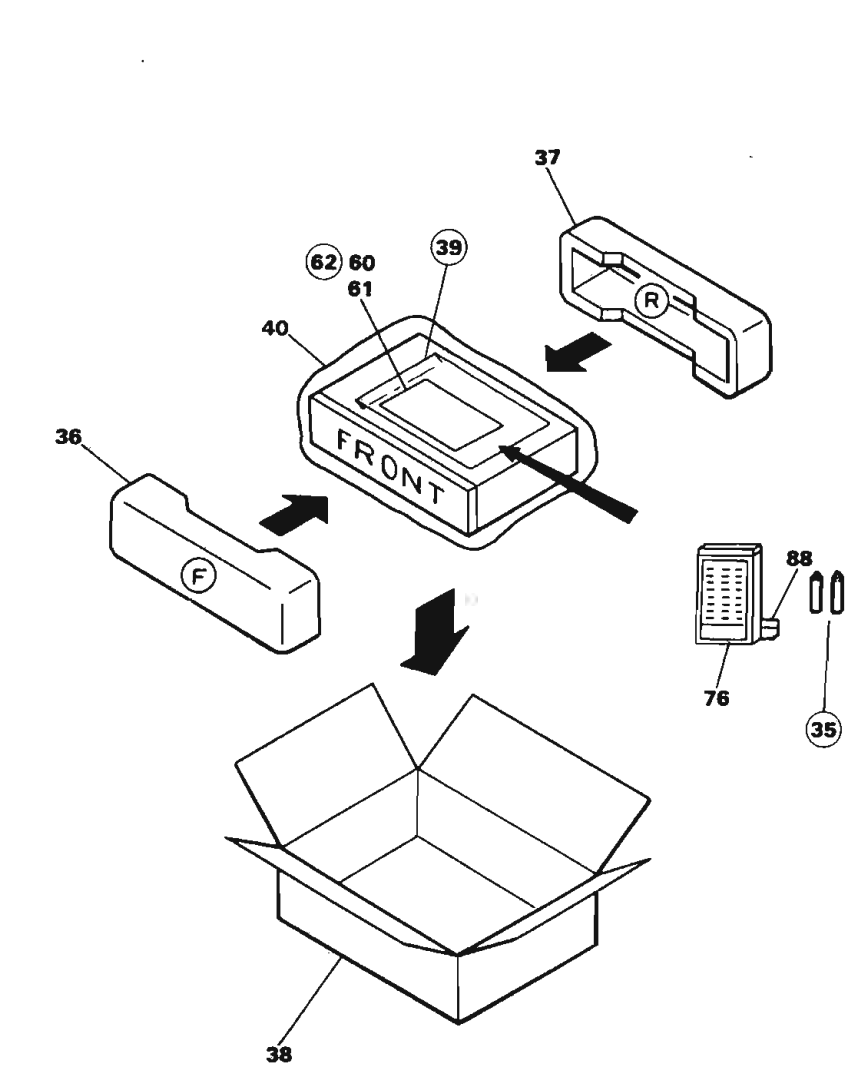
2.1 PARTS LIST

Mark	No.	Description	Part No.	Mark	No.	Description	Part No.
	1	VOL KNOB(VOLUME)	AAB1117		49	REAR PANEL	
	2	ROTARY KNOB(MIC LEVEL,BALANCE)	AAB1130		50	BOTTOM PLATE	
	3	POWER BUTTON	AAD1595		51	BONNET CASE	ANE1208
	4	BOTTUN L (LSS MODE)	AAD1596		52	TRANS. HOLDER	
	5	BUTTON L (DIRECT MODE)	AAD1597		53	HEAT SINK HOLDER	
	6	KIN BUTTON (MUTING, LSS SET)	AAD1682		54	VOLUME HOLDER	
	7	FUNCTION BUTTON	AAD1967		55	HOLDER	
	8	BUTTON S (SPEAKERS)	AAD1970		56	HOLDER A	
	9	LENS L	AAK1757		57	HEAT SINK	
	10	LENS S	AAK1758		58	HEAT SINK	
	11	LENS	AAK1759		59	GROUND PLATE	
	12	SHEET			60	OPERATING INSTRUCTIONS (Dutch, Swedish, Spanish, Portuguese)	ARC1248
	13	SHEET			61	OPERATING INSTRUCTIONS (English, German, French, Italian)	ARE1180
	14	PVC SHEET			62	WARRANTY CARD	
	15	PANEL	AAK2116		63	
	16			64	DAC ASSEMBLY	AWK1384
	17	NAME PLATE(PLASTIC)			65	MIC ASSEMBLY	
	18	NAME PLATE			66	HEAD PHONE ASSEMBLY	
	19	SCREW (STEEL)	ABA-283		67	SUB TRANS ASSEMBLY	
	20	SCREW	ABA-298		68	POWER VR ASSEMBLY	
	21	SCREW (STEEL)	ABA1009		69	RELAY ASSEMBLY	
	22	SCREW (STEEL)	ABA1011		70	SP TERMINAL ASSEMBLY	
	23	SCREW	ABA1018		71	FUSE ASSEMBLY	
	24	SCREW (STEEL)	ABA1047		72	DISPLAY ASSEMBLY	AWZ3360
	25	SCREW (STEEL)	ABA1050		73	AF ASSEMBLY	AWZ3402
	26	SCREW (STEEL)	ABA1072		74	POWER ASSEMBLY	AWZ2734
	27	SCREW	ABA1098		75	STANDBY ASSEMBLY	AWZ3505
	28	AC POWER CORD	ADG1019		76	REMOTE CONTROLLER (CU-AZ019)	AXD1193
	29	RUBBER CUSHION			77	SCREW	BBZ26P060FMC
	30			78	SCREW	BBZ26P080FMC
	31	NYLON RIVET	AEC-510		79	NUTS	NK90FZB
	32	STRAIN RELIEF	AEC-882		80	FOOT(PLASTIC)	RXA1276
	33	PCB SUPPORT			81	
	34			82	FU1 FUSE(T2.5A)	AEK-403
	35	BATTERY (R03, AAA)			83	FU2 FUSE(T2A)	AEK-017
	36	FRONT PAD	AHA1272		84	FU3 FUSE(T1.6A)	AEK-405
	37	REAR PAD	AHA1273		85	FU4 FUSE(T1.6A)	AEK-405
	38	PACKING CASE	AHD2007		86	FU5 FUSE(T2A)	AEK-017
	39	LITERATURE BAG	AHG1016		87	T1 POWER TRANSFORMER	ATS1223
	40	PACKING SHEET			88	BATTERY COVER	AZN2072
	41	TERMINAL SCREW					
	42	MOUNTING PLATE					
	43	FRONT PANEL ASSY	AMB1759				
	44	PCB MOULD					
	45	LEG ASSY(S)					
	46	PLATE	AMR2133				
	47	SASH					
	48	CHASSIS					

2.2 EXPLODED VIEWS

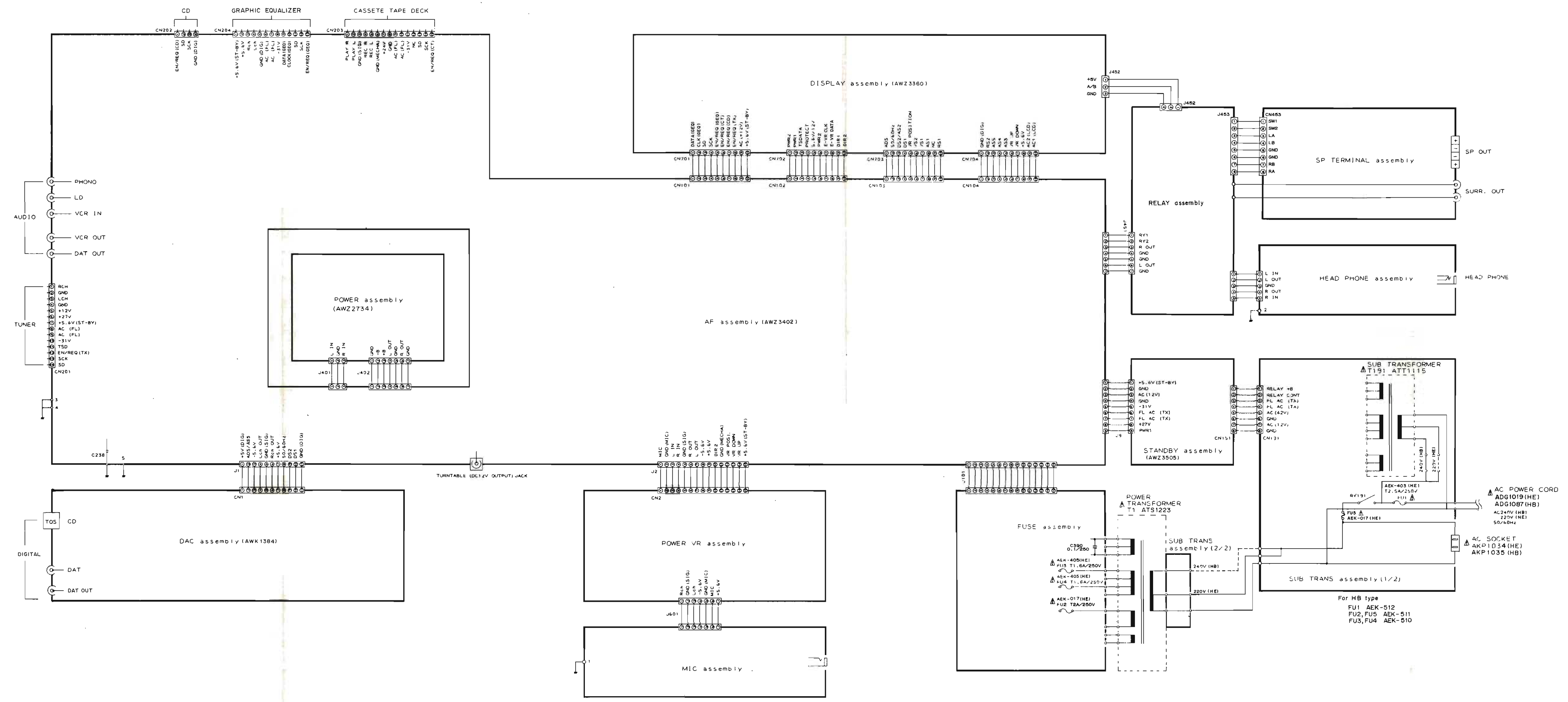


2.3 PACKING



4. SCHEMATIC DIAGRAMS AND P.C.BOARD CONNECTION DIAGRAMS

4.1 OVER ALL SCHEMATIC DIAGRAM



- 1.RESISTORS:**
Indicated in Ω , 1/8, 1/4W., $\pm 5\%$ tolerance unless otherwise noted
k; k Ω , M; M Ω , (F); $\pm 1\%$, (G); $\pm 2\%$, (K); $\pm 10\%$, (M); $\pm 20\%$ tolerance.
- 2.CAPACITORS:**
Indicated in capacity (μ F)/voltage(V) unless otherwise noted p; pF. Indication without voltage is 50V except electrolytic capacitor.
- 3.VOLTAGE, CURRENT:**
 ; Signal voltage at 60 W + 60 W, 8 Ω output(1kHz).
 ; DC voltage (V) at no input signal.
 Value in () is DC voltage at rated power.
 ; DC current at no input signal.
- 4.OTHERS:**
 ; Signal route.
 ; Adjusting point
 The Δ mark found on some component parts indicates the importance of the safety factor of the part. Therefore, when replacing, be sure to use parts of identical designation.
 * marked capacitors and resistors have parts numbers.
 This is the basic schematic diagram, but the actual circuit may vary due to improvements in design.
- 5.SWITCHES:**
DISPLAY ASSEMBLY
 S701 : POWER
 S702 : LSS SET
 S703 : LSS MODE
 S704 : PHONO
 S705 : TUNER
 S706 : TAPE
 S707 : DAT
 S708 : CD
 S709 : LD
 S710 : VCR
 S711 : SURROUND & STEREO WIDE
 S712 : DIRECT MODE
 S713 : MUTING
 S714 : SPEAKERS A/B OR A+B

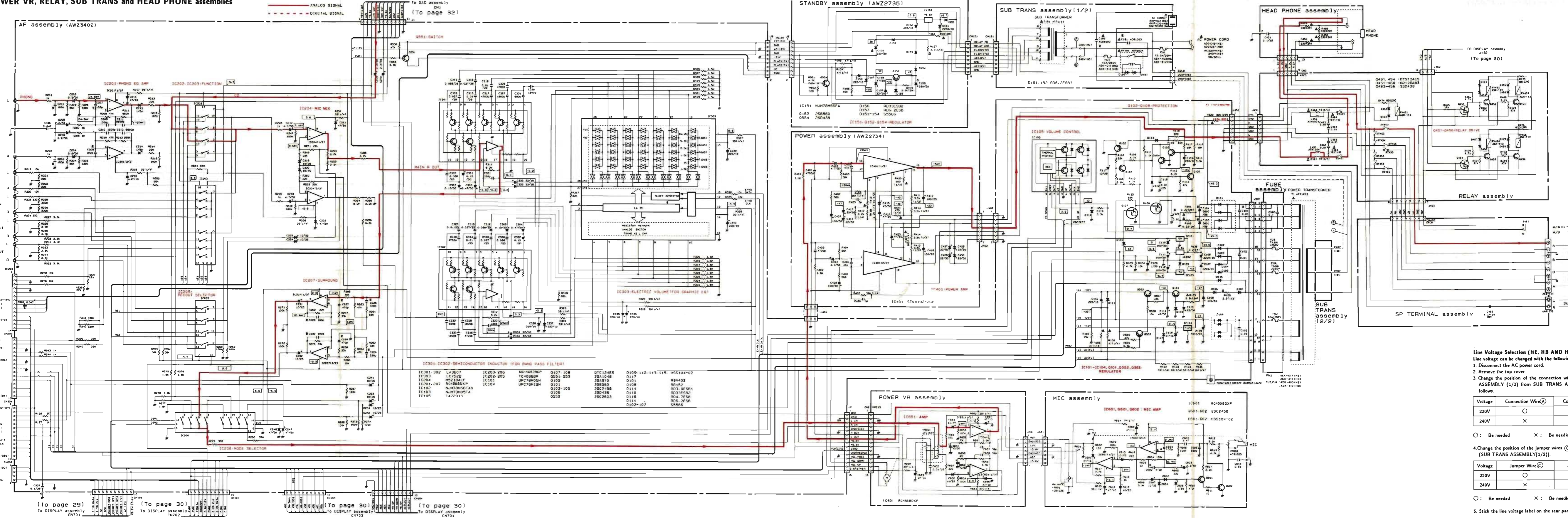
4.2 AF(AWZ3402), STANDBY(AWZ2735), SP TERMINAL, FUSE, POWER(AWZ2734),
MIC, POWER VR, RELAY, SUB TRANS and HEAD PHONE assemblies

A

B

C

D



- Line Voltage Selection (HE, HB AND HEWZIW TYPES)**
Line voltage can be changed with the following steps.
1. Disconnect the AC power cord.
 2. Remove the top cover.
 3. Change the position of the connection wires to SUB TRANS ASSEMBLY (1/2) from SUB TRANS ASSEMBLY (2/2) as follows.
 4. Change the position of the jumper wires (C) and (D) as follows. (SUB TRANS ASSEMBLY (1/2)).
 5. Stick the line voltage label on the rear panel.

Voltage	Connection Wire(A)	Connection Wire(B)
220V	○	×
240V	×	○

○ : Be needed × : Be needless

Voltage	Jumper Wire(C)	Jumper Wire(D)
220V	○	×
240V	×	○

○ : Be needed × : Be needless

Parts No.	Description
AXX-193	220V label
AXX-192	240V label

1 2 3 4 5 6 7 8 9

A

B

C

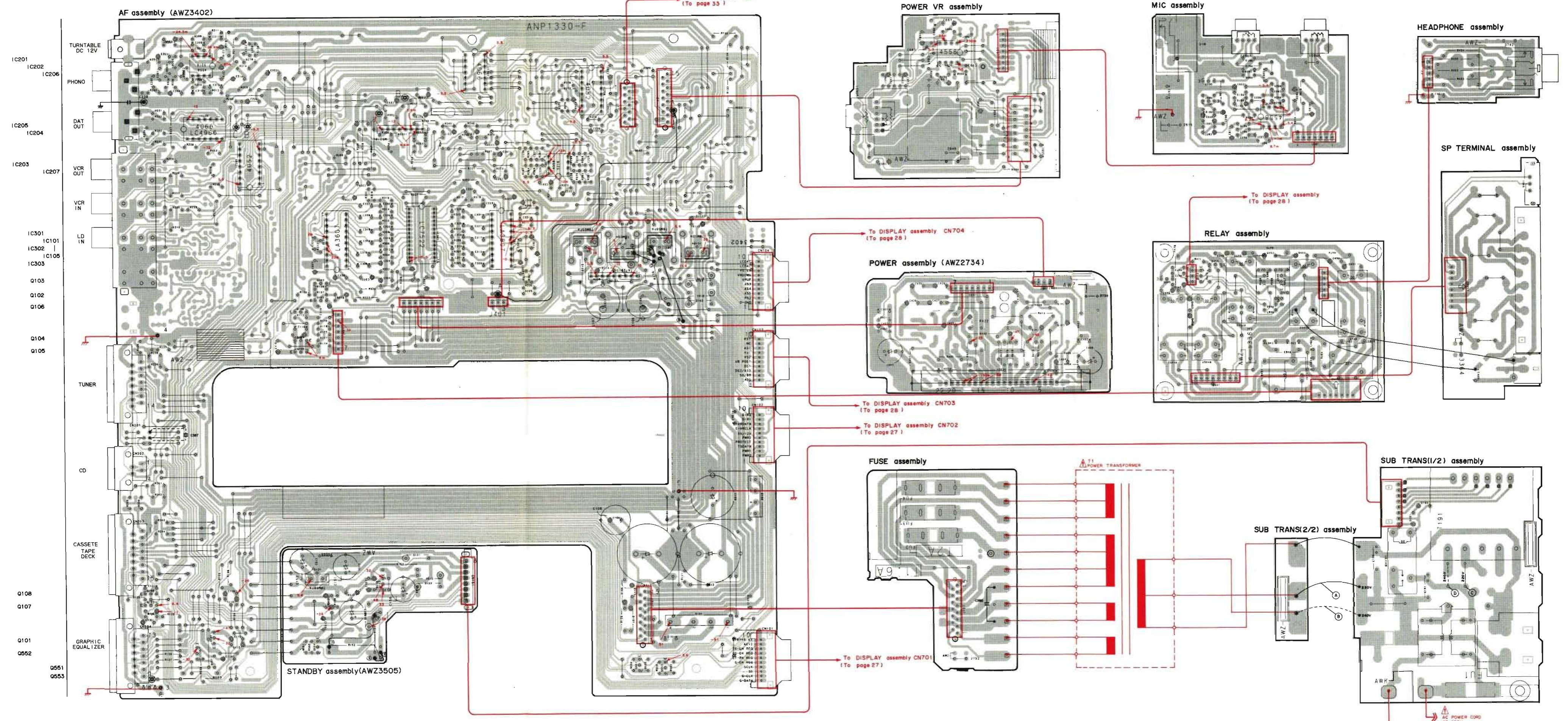
D

A

B

C

D



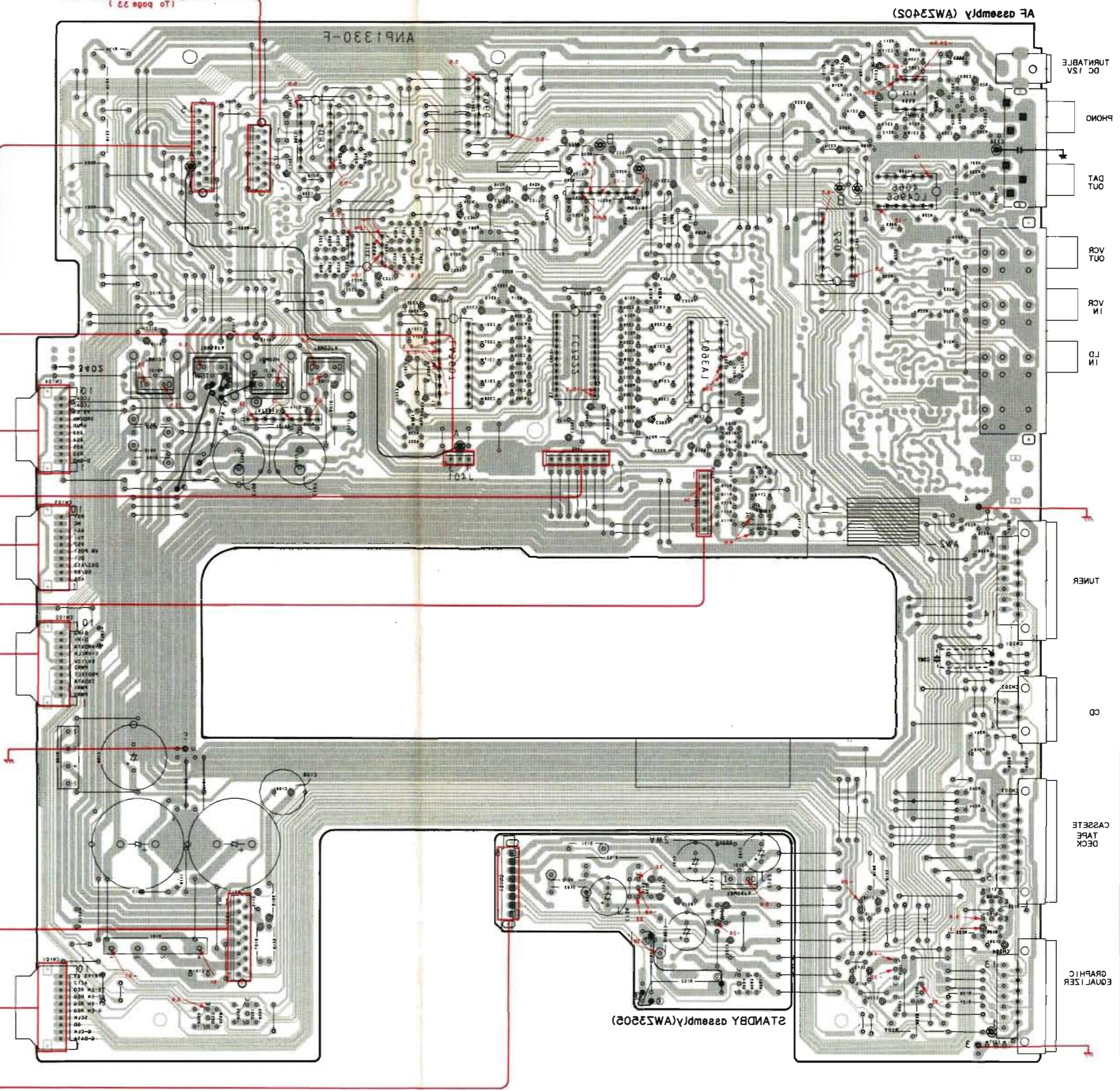
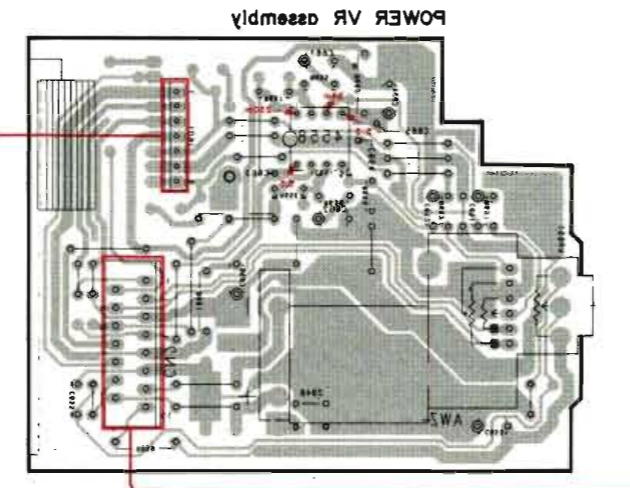
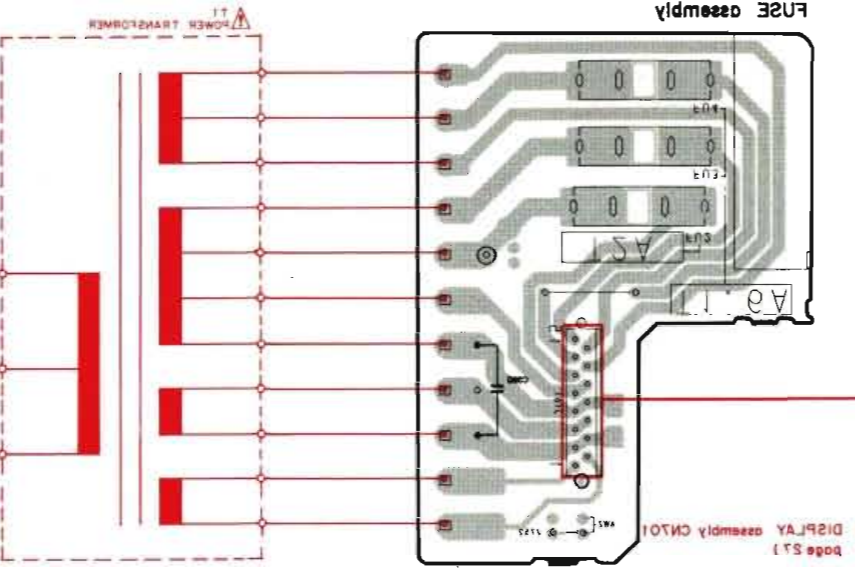
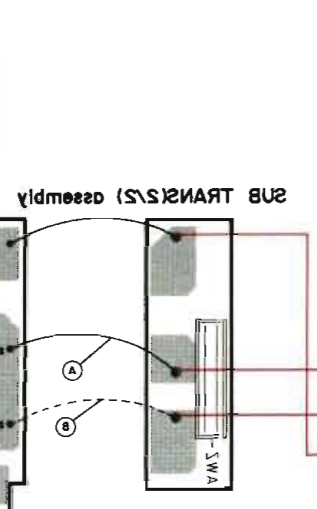
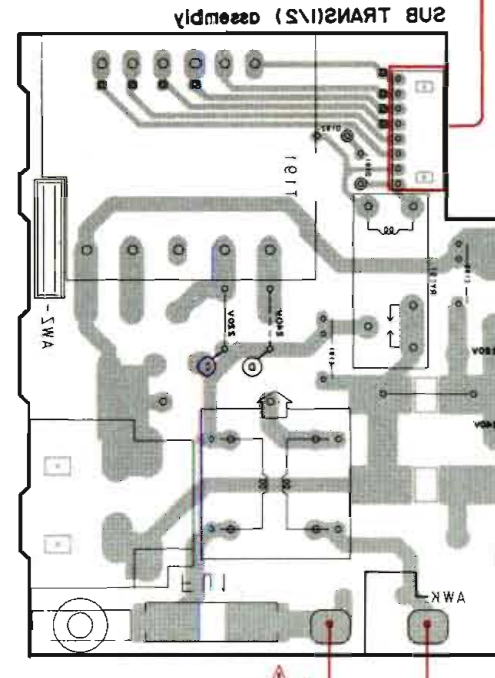
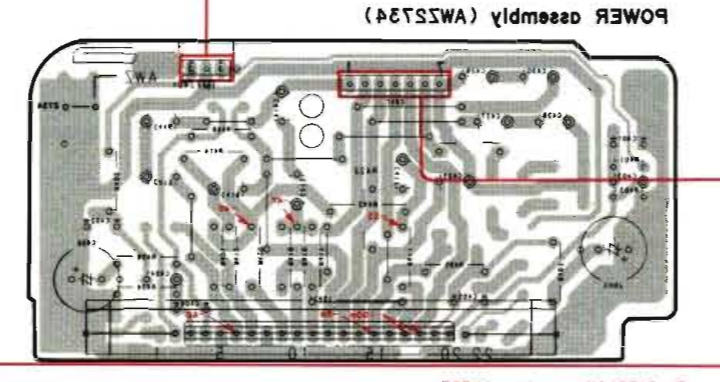
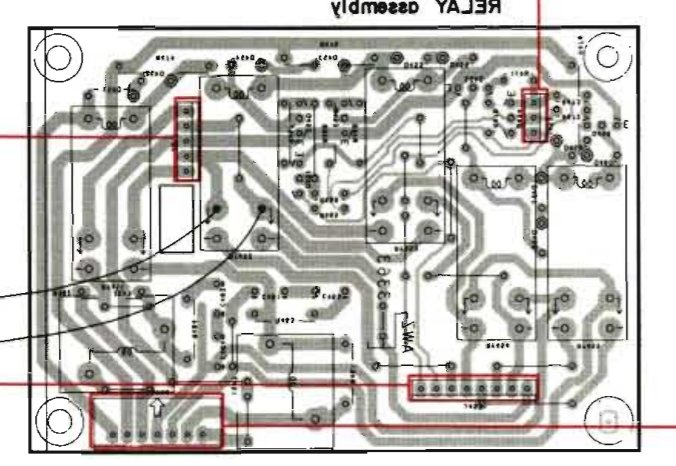
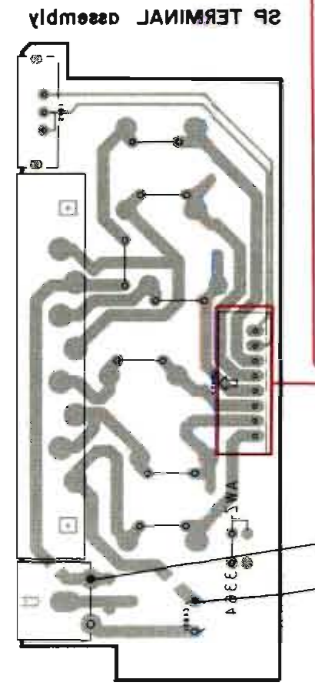
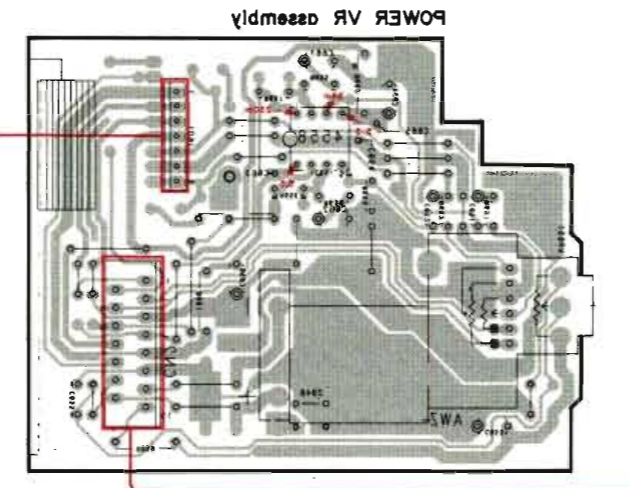
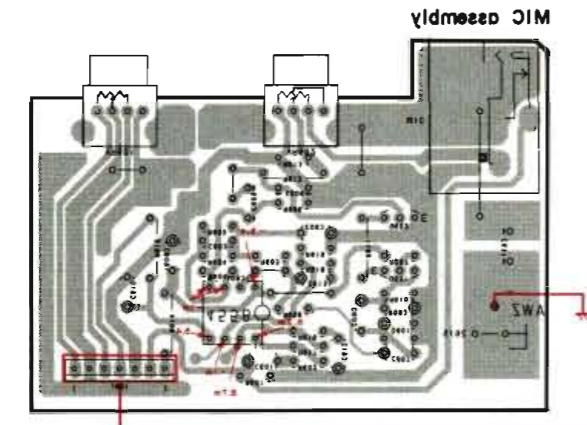
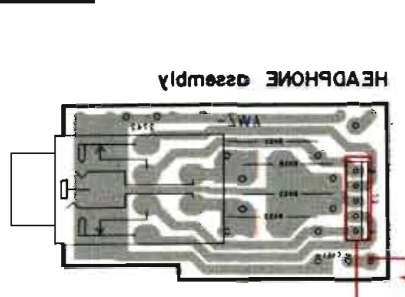
IC201
IC202
IC206
PHONO
IC205
IC204
DAT OUT
IC203
IC207
VCR OUT
VCR IN
LD IN
IC301
IC101
IC302
IC105
IC303
Q103
Q102
Q106
Q104
Q105
TUNER
CD
CASSETTE TAPE DECK
Q108
Q107
Q101
Q552
Q551
Q553
GRAPHIC EQUALIZER

A

B

C

D



This P.C.B. connection diagram is viewed from the foil side.

A

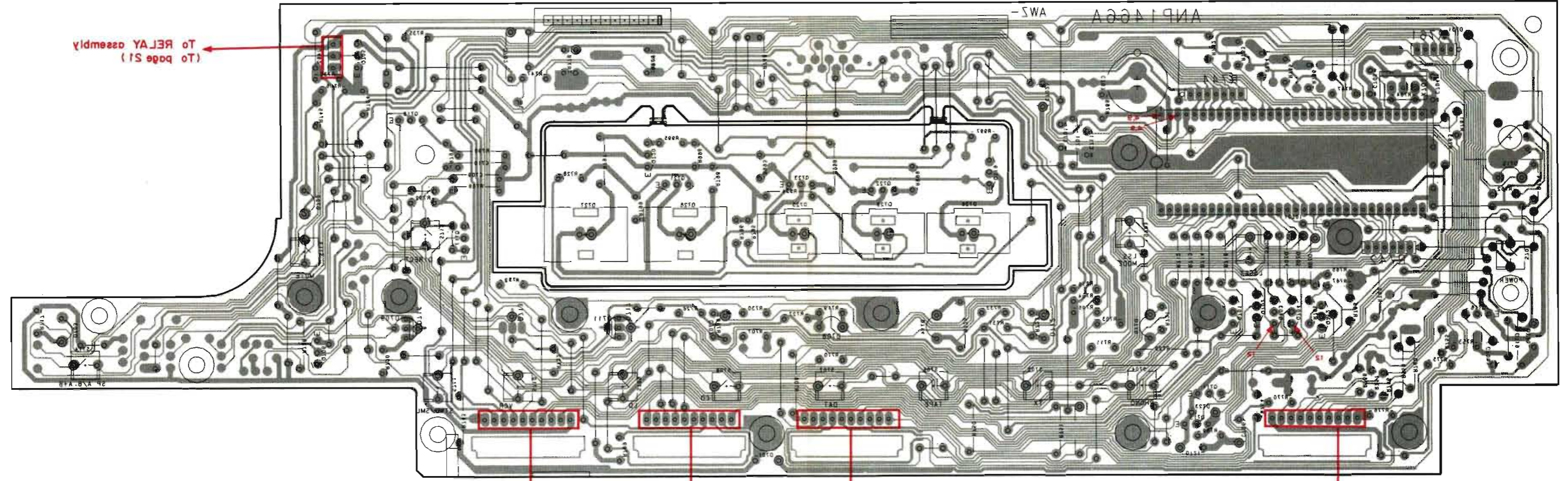
B

C

D

This P.C.B. connection diagram is viewed from the foil side.

DISPLAY assembly(YAW3360)



To RELAY assembly
(To page S1)

To AF assembly CN104
(To page S0)

To AF assembly CN103
(To page S0)

To AF assembly CN103
(To page S0)

To AF assembly CN105
(To page S0)

To AF assembly CN101
(To page S0)

Q204 Q205
Q215 Q201 Q213
IC201 Q203 Q211

Q216 Q219 Q255 Q253 Q251 Q250 Q217 Q218 Q202 Q208

A

B

C

D

A

B

C

D

a

b

4

3

2

1

a

b

4

3

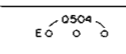

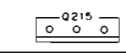
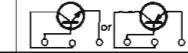
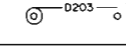
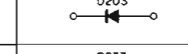
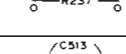
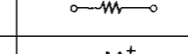
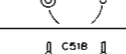
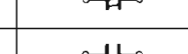

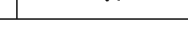
2

1

4.3 DISPLAY(AWZ3360) assembly

NOTE

1. This P.C.B connection diagram is viewed from the parts mounted side.
2. The parts which have been mounted on the board can be replaced with those shown with the corresponding wiring symbols listed in the following Table.

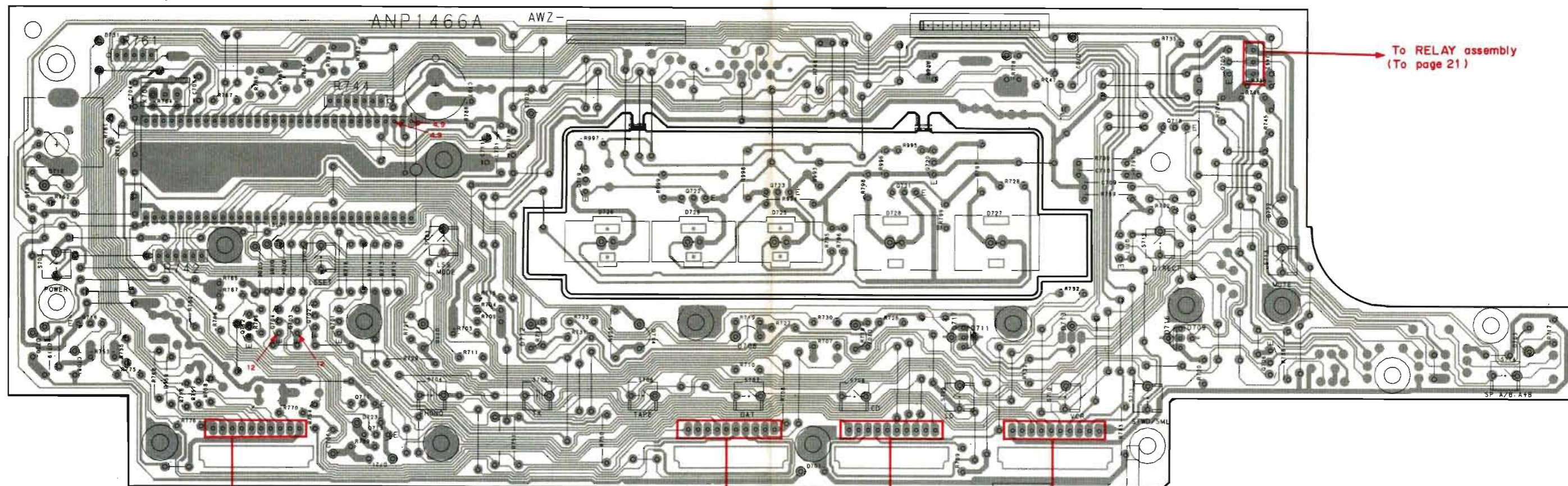
P.C.B. pattern diagram indication	Corresponding part symbol	Part Name
		Transistor
		Radiator type transistor
		Diode
		Resistor
		Capacitor (Polarity)
		Capacitor (Non-polarity)

Others

P.C.B. pattern diagram indication	Part Name
IC	IC
S	Switch
RY	Relay
L	Coil
F	Filter
VR	Variable resistor or Semi-fixed resistor

3. The capacitor terminal marked with ⊖ (double circles) shows negative terminal.
4. The diode terminal marked with ⊖ (double circles) shows cathode side.
5. The transistor terminal to which E is affixed shows the emitter.

DISPLAY assembly(AWZ3360)



Q716

IC701 Q703 Q711
Q712 Q701 Q713
Q704 Q702

Q719

Q722

Q723

Q721 Q720

Q717 Q718

Q705 Q706

To AF assembly CN101
(To page 20)

To AF assembly CN102
(To page 20)

To AF assembly CN103
(To page 20)

To AF assembly CN104
(To page 20)

To RELAY assembly
(To page 21)

1 2 3 4 5 6

DISPLAY assembly (AWZ3360)

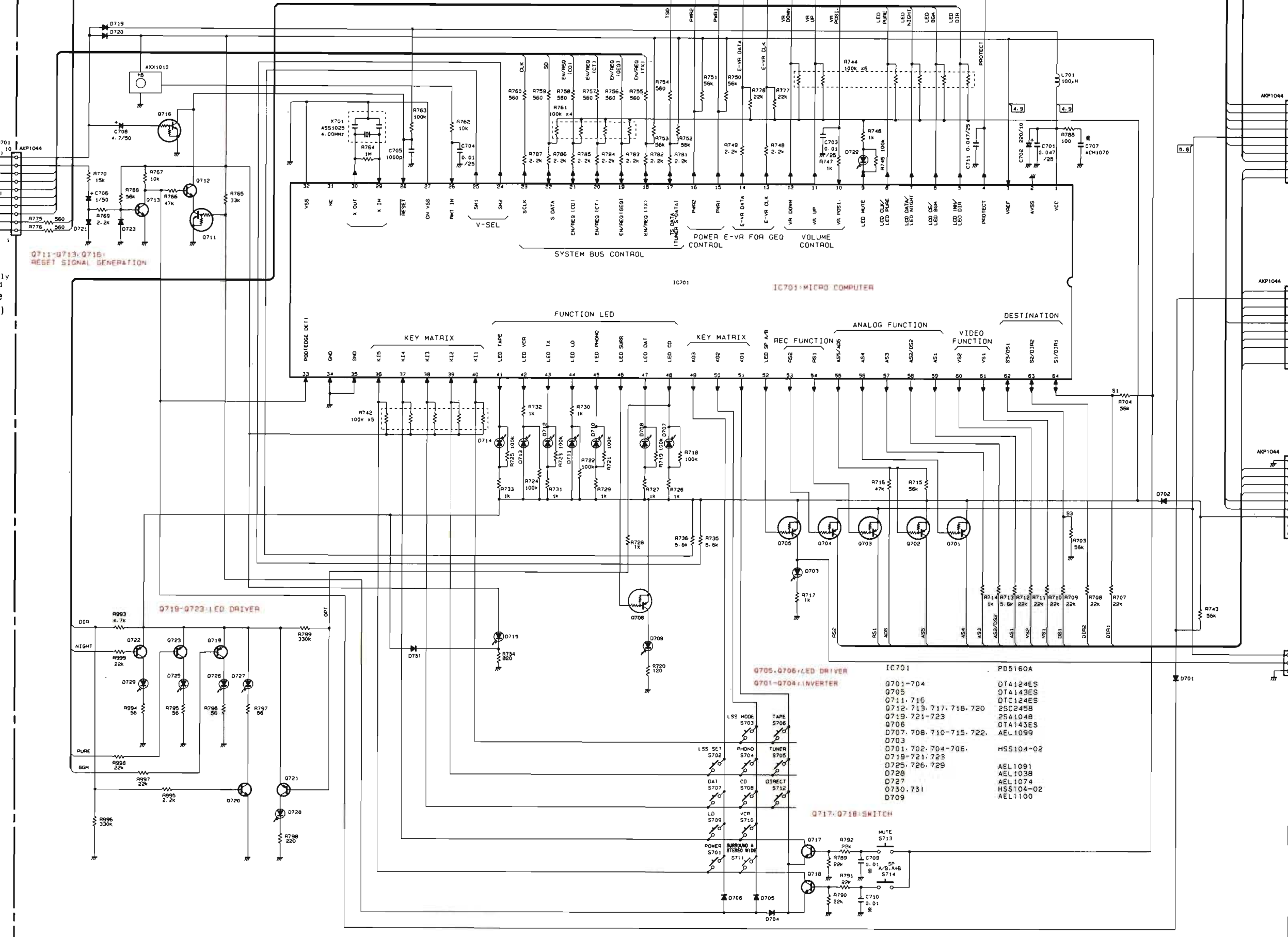
To AF assembly CN101 (To page 15)

To AF assembly CN102 (To page 15)

To AF assembly CN103 (To page 15)

To AF assembly CN104 (To page 16)

To RELAY assembly J452 (To page 18)



IC701	PD5160A
0701-704	DTA124ES
0705	DTA143ES
0711-716	OTC124ES
0712-713, 717, 718, 720	2SC245B
0719-721-723	2SA104B
0706	DTA143ES
0707, 708, 710-715, 722,	AEL1099
0703	
0701, 702, 704-706,	HSS104-02
0719-721, 723	
0725, 726, 729	AEL1091
0728	AEL103B
0727	AEL1074
0730, 731	HSS104-02
0709	AEL1100

1 2 3 4 5 6

4.4 DAC(AWK1384) assembly

A

B

C

D

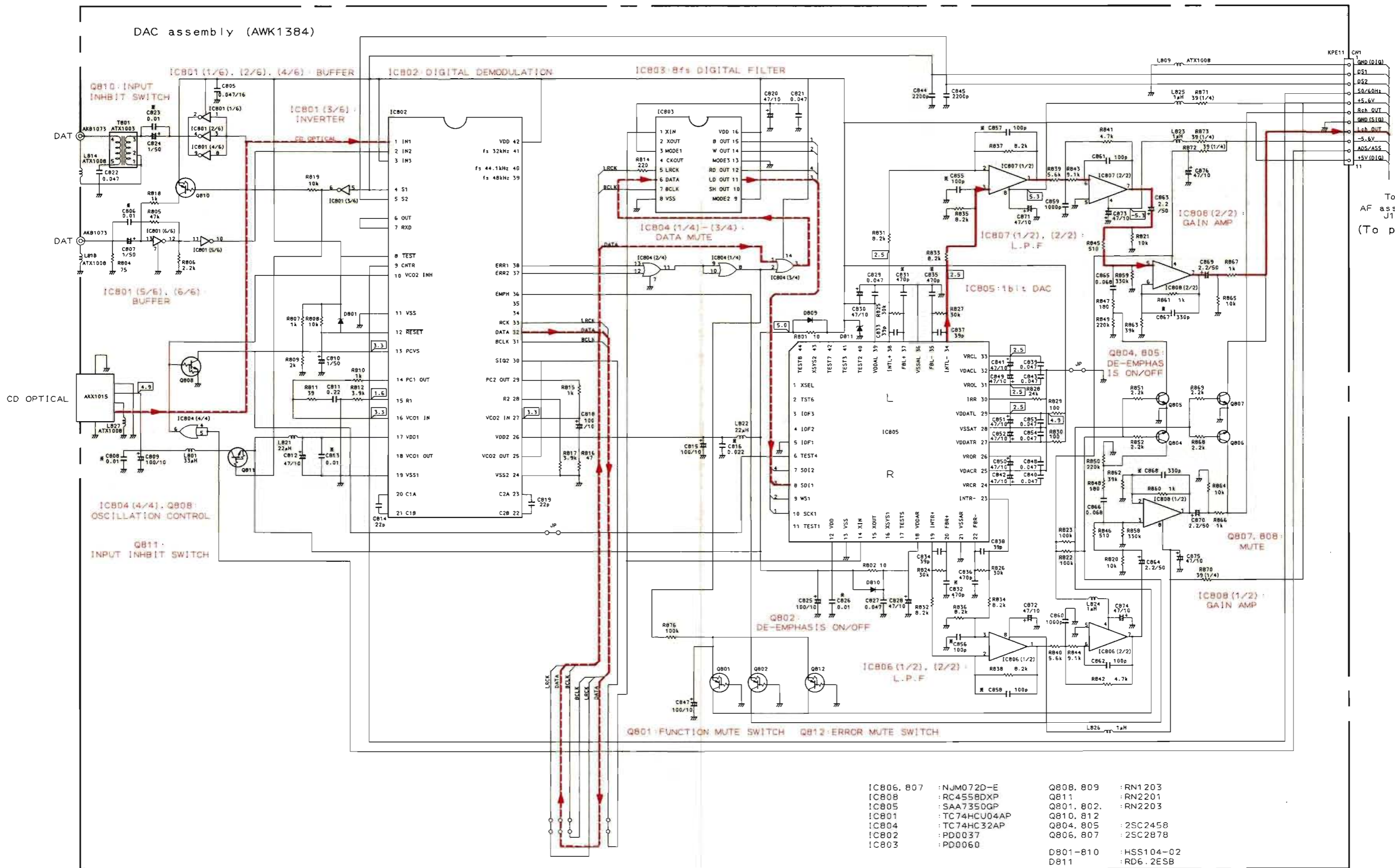
A

B

C

D

DAC assembly (AWK1384)

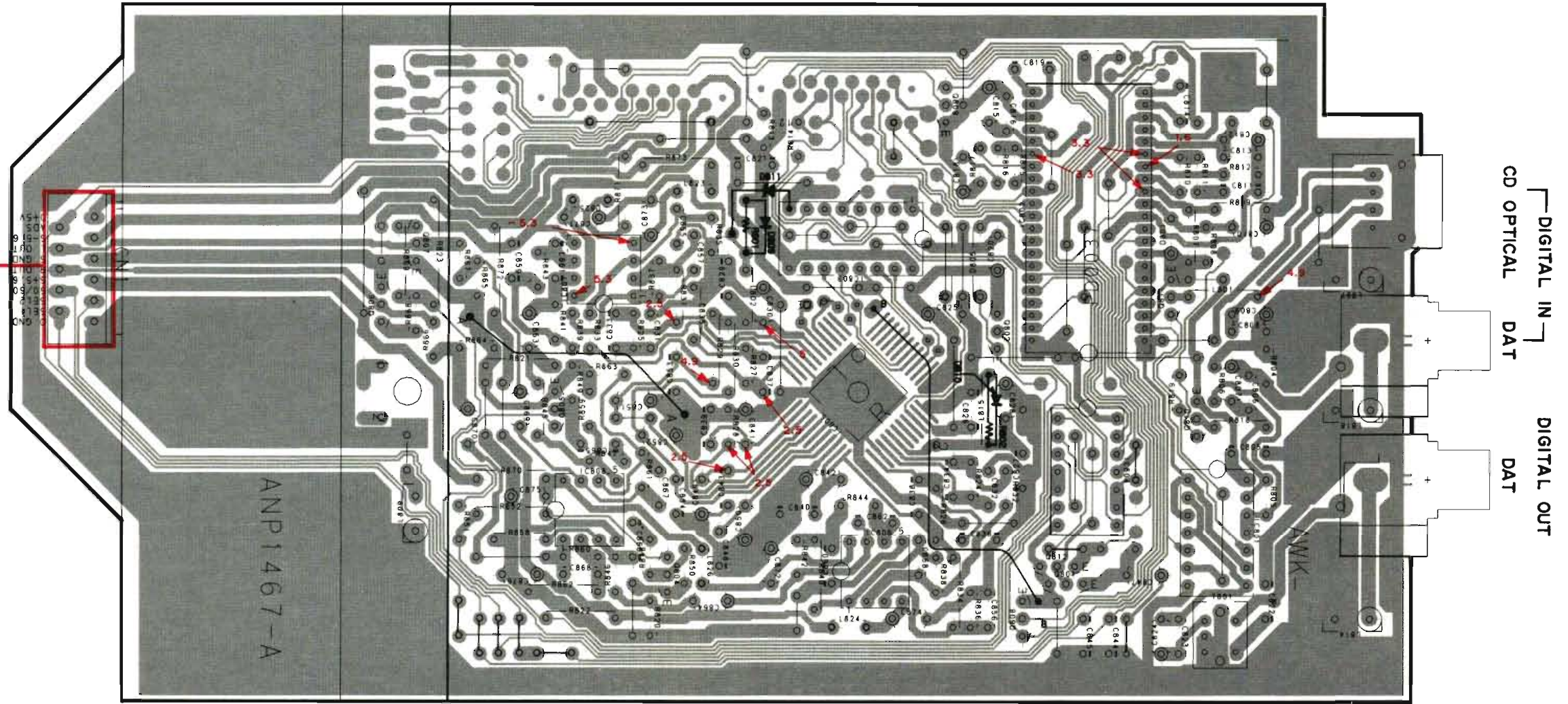


To AF assembly J1 (To page 16)

IC806, 807	: NJM072D-E	Q808, 809	: RN1203
IC808	: RC4558DXP	Q811	: RN2201
IC805	: SAA7350GP	Q801, 802	: RN2203
IC801	: TC74HC04AP	Q810, 812	
IC804	: TC74HC32AP	Q804, 805	: 2SC2458
IC802	: PD0037	Q806, 807	: 2SC2878
IC803	: PD0060	D801-810	: HSS104-02
		D811	: RD6.2ESB

DAC assembly (AWK1384)

To AF assembly J1
(To page 20)



Q806 Q807 Q805 IC807 IC803 Q809 Q802 IC802 Q811 Q810
IC808 Q804 IC805 IC806 Q808 IC804 IC801
Q812
Q801

NOTE

1. This P.C.B connection diagram is viewed from the parts mounted side.
2. The parts which have been mounted on the board can be replaced with those shown with the corresponding wiring symbols listed in the following Table.

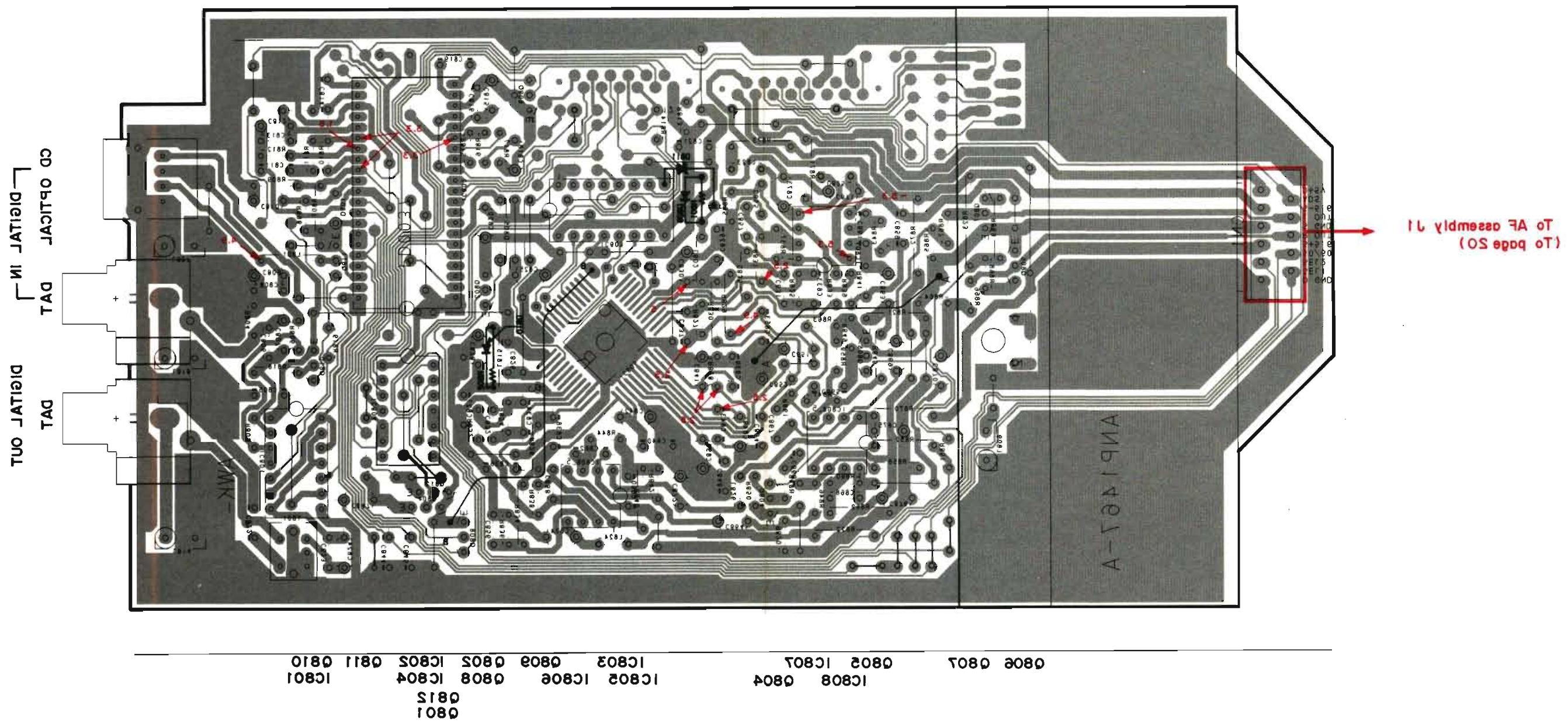
P.C.B. pattern diagram indication	Corresponding part symbol	Part Name
		Transistor
		Radiator type transistor
		Diode
		Resistor
		Capacitor (Polarity)
		Capacitor (Non-polarity)

Others

P.C.B. pattern diagram indication	Part Name
IC	IC
S	Switch
RY	Relay
L	Coil
F	Filter
VR	Variable resistor or Semi-fixed resistor

3. The capacitor terminal marked with ⊕ (double circles) shows negative terminal.
4. The diode terminal marked with ⊕ (double circles) shows cathode side.
5. The transistor terminal to which E is affixed shows the emitter.

DAC assembly (WK1384)



This P.C.B. connection diagram is viewed from the foil side.

5. FOR HB AND HEWZIWI TYPES

- NOTES:**
- Parts without part number cannot be supplied.
 - Parts marked by "⊙" are not always kept in stock. Their delivery time may be longer than usual or they may be unavailable.
 - The Δ mark found on some component parts indicates the importance of the safety factor of the part. Therefore, when replacing, be sure to use parts of identical designation.

CONTRAST OF MISCELLANEOUS PARTS

The A-Z370/HB and HEWZIWI types are the same as the A-Z370/HE type with the exception of the following sections.

Mark	Symbol & Description	Part No.			Remarks
		HE type	HB type	HEWZIWI type	
⊙	AF assembly	AWZ3402	AWZ3402	AWZ3405	
⊙	POWER assembly	AWZ2734	AWZ2734	AWZ2739	
	SP TERMINAL assembly	Non supply	Non supply	Non supply	
	POWER VR assembly	Non supply	Non supply	Non supply	
	HEAD PHONE assembly	Non supply	Non supply	Non supply	
	SUB TRANS assembly	Non supply	Non supply	Non supply	
	MIC assembly	Non supply	Non supply	Non supply	
Δ	AC power cord	ADG1019	ADG1087	ADG1012	
Δ	FU1 Fuse	AEK-403	AEK-512	AEK-403	
Δ	FU2,5 Fuse	AEK-017	AEK-511	AEK-017	
Δ	FU3,4 Fuse	AEK-405	AEK-510	AEK-405	
	Operating instructions (Dutch, Swedish, Spanish, Portuguese)	ARC1248	
	Operating instructions (English, German, French, Italian)	ARE1180	
	Operating instructions (English)	ARB1290	
	Operating instructions (German)	ARC1245	

AF assembly (AWZ3405)

The AF assembly(AWZ3405) is the same as the AF assembly(AWZ3402) with the exception of the following sections.

Mark	Symbol & Description	Part No.		Remarks
		AWZ3402	AWZ3405	
	C102, C103	CKDYF103Z50	CKDYF473Z50	
	C341-344, 347-349, 383, 386, 387	CKDYF473Z50	
	C345, 346	CQMA104K50	
	C351, 352	ACG1020	
	C353, 354, 357, 358, 361, 362	CKDYB331K50	
	C355, 356, 359, 360, 363, 364, 373-382	ACG1018	
	C384, 385	CKDYB391K50	
	R201, 202	RD1/8PM102J	RD1/8PM222J	

POWER assembly (AWZ2739)

The POWER assembly(AWZ2739) is the same as the POWER assembly(AWZ2734) with the exception of the following sections.

Mark	Symbol & Description	Part No.		Remarks
		AWZ2734	AWZ2739	
	C405, 406	CCDSL470J50	CCDSL221J50	
	C431, 432	CCDSL101K500	
	C433, 434	CCDSL101J50	
	C435, 436	CKDYB331K50	
	R425, R429, R430	RD1/8PM100J	

SP TERMINAL assembly

The SP TERMINAL assembly (HEWZIWI type) is the same as the SP TERMINAL assembly (HE and HB types) with the exception of the following sections.

Mark	Symbol & Description	Part No.		Remarks
		HE, HB types	HEWZIWI type	
	C365, 366	CFTXA103J50	
	C471-482	CQMXA103J100	
	L353, 354	ATH1002	

POWER VR assembly

The POWER VR assembly (HEWZIWI type) is the same as the POWER VR assembly (HE and HB types) with the exception of the following sections.

Mark	Symbol & Description	Part No.		Remarks
		HE, HB types	HEWZIWI type	
	C663-665	CKDYB103K50	
	C666, 667	CCDSL470J50	
	R700	RD1/8PM100J	

HEAD PHONE assembly

The HEAD PHONE assembly (HEWZIWI type) is the same as the HEAD PHONE assembly (HE and HB types) with the exception of the following sections.

Mark	Symbol & Description	Part No.		Remarks
		HE, HB types	HEWZIWI type	
	C369, 370	CKDYX473M25	

SUB TRANS assembly

The SUB TRANS assembly (HB type) is the same as the SUB TRANS assembly (HE and HEWZIWI types) with the exception of the following sections.

Mark	Symbol & Description	Part No.		Remarks
		HE, HEWZIWI types	HB type	
	AC socket (OUTLET 1P)	AKP1034	AKP1035	

MIC assembly

The MIC assembly (HEWZIWI type) is the same as the MIC assembly (HE and HB types) with the exception of the following sections.

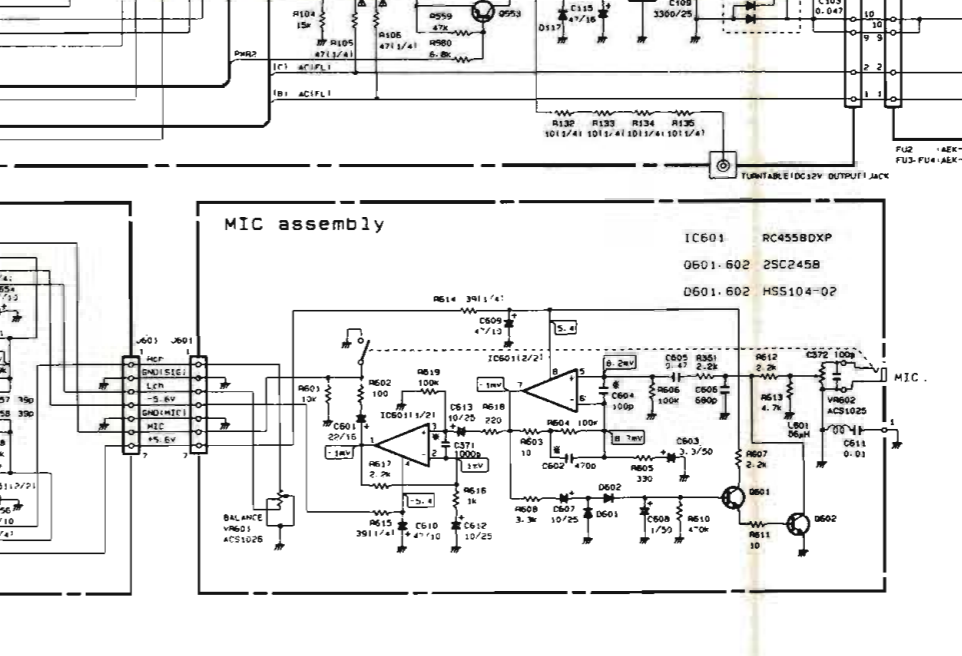
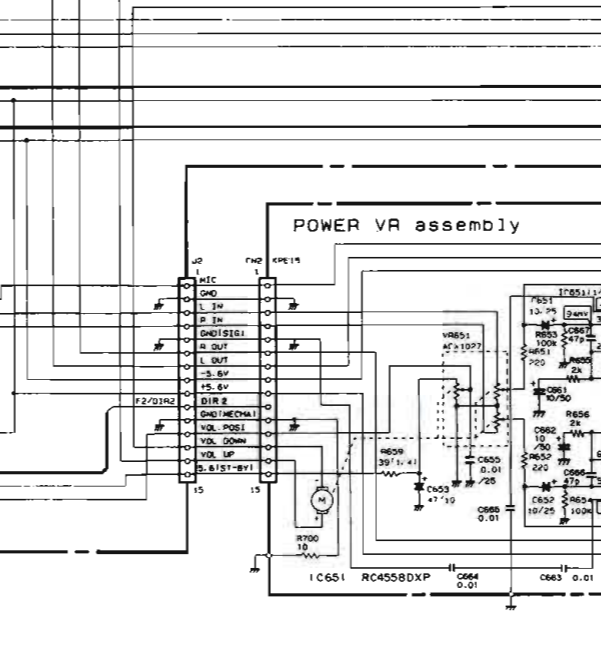
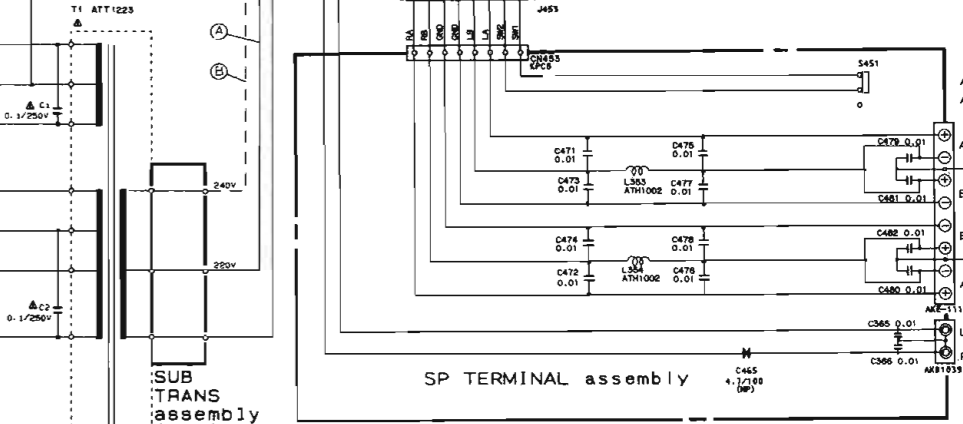
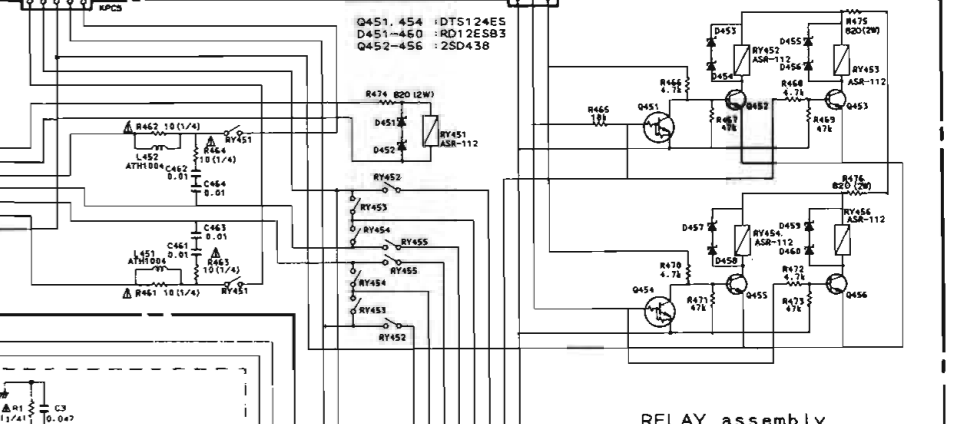
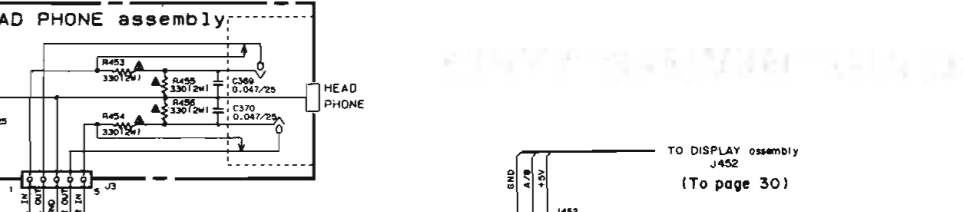
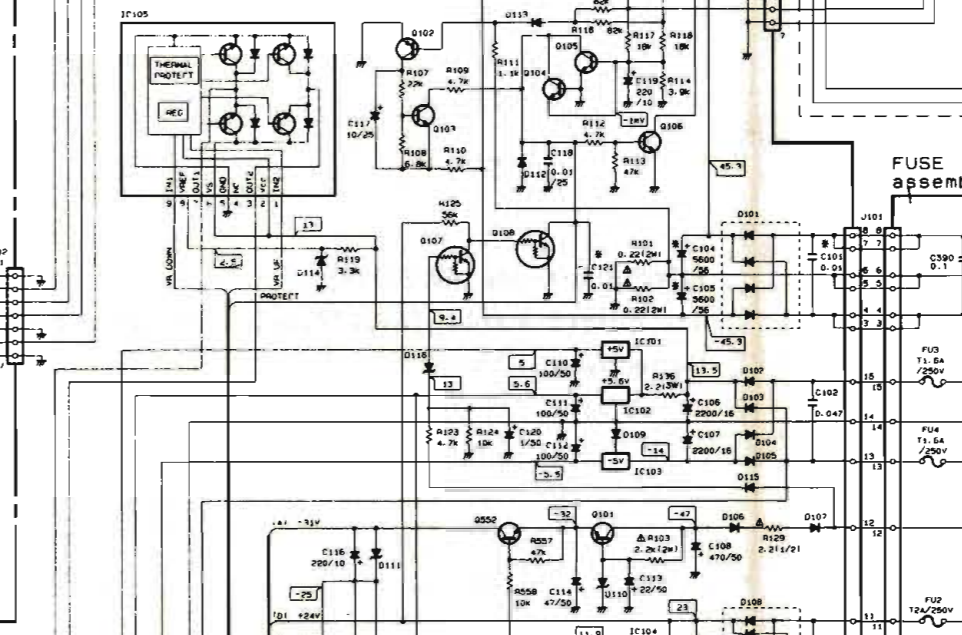
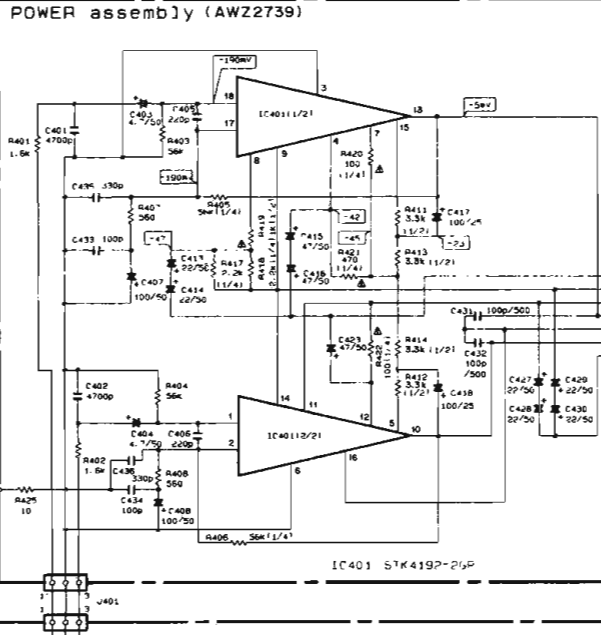
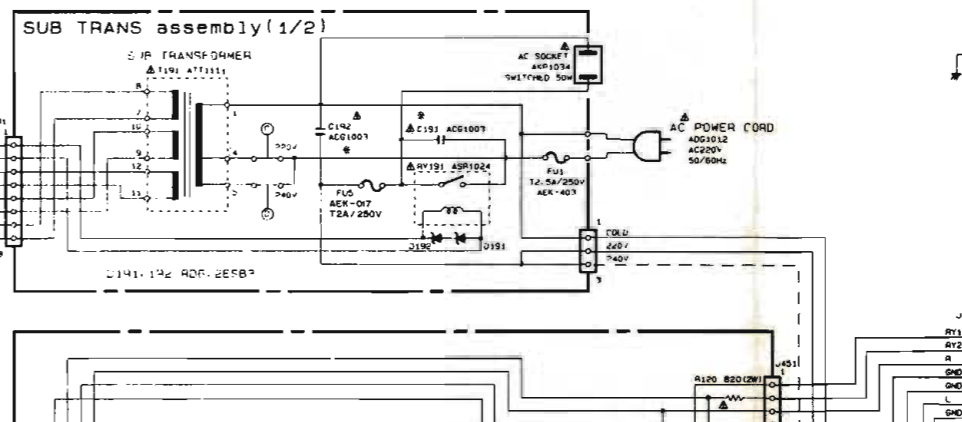
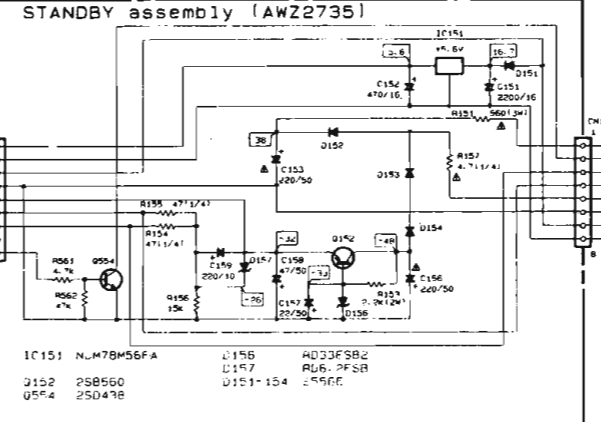
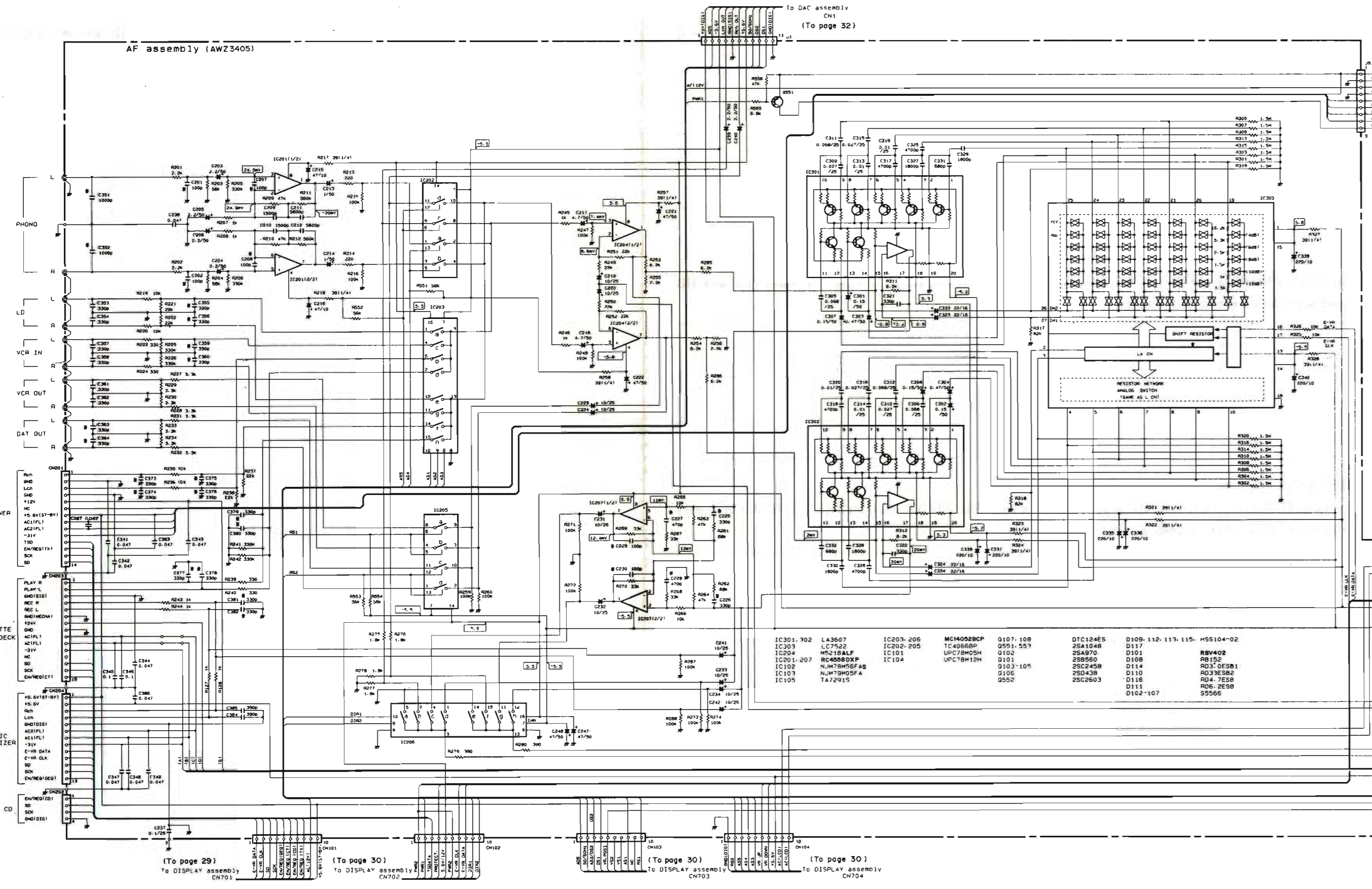
Mark	Symbol & Description	Part No.		Remarks
		HE, HB types	HEWZIWI type	
	C371	ACG1020	
	C372	ACG1017	
	C604	ACG1017	ACG1020	
	L601	LAUR56M	
	R351	RD1/8PM222J	

A

B

C

D

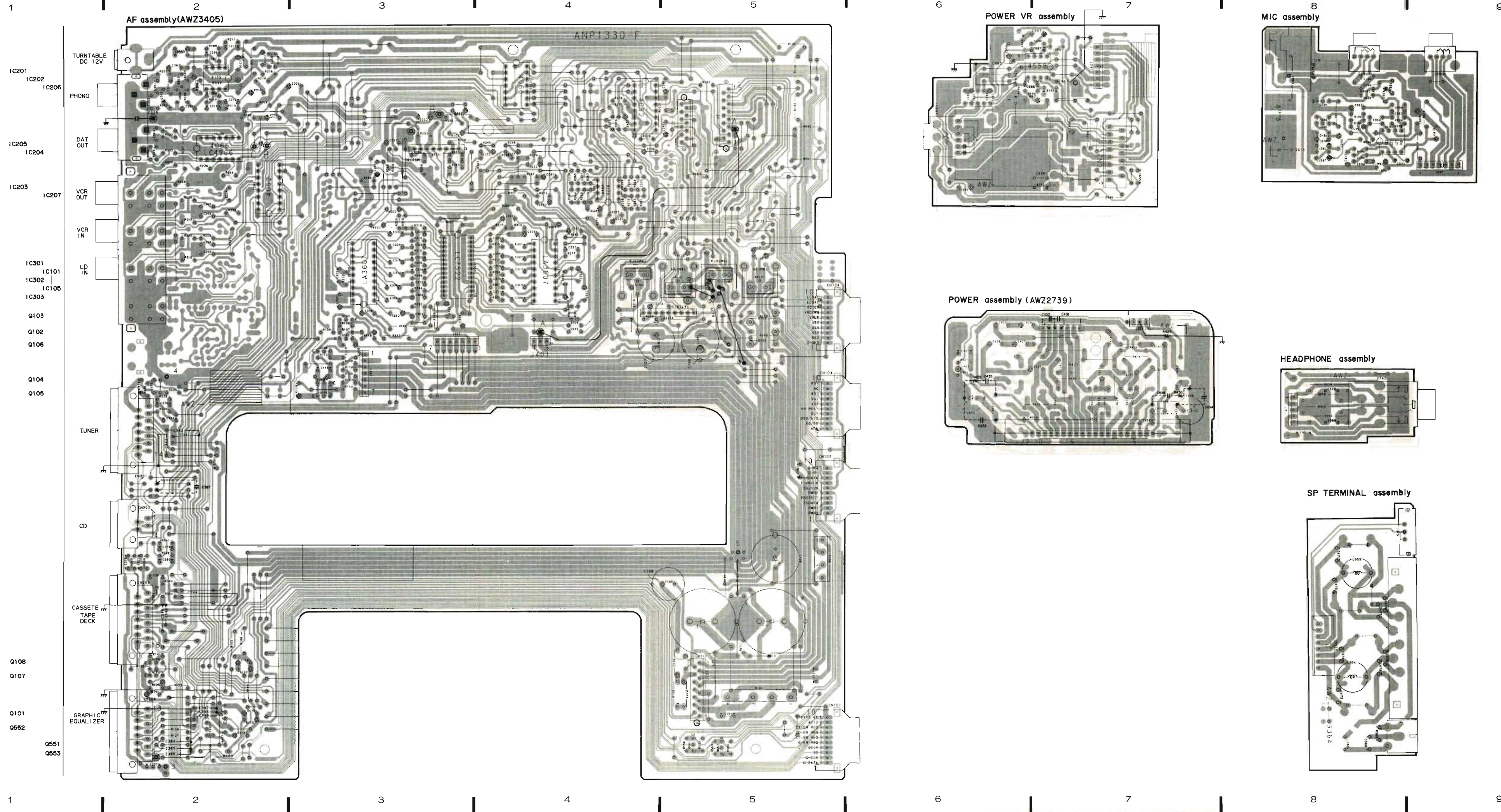


A

B

C

D



AF assembly(AWZ3405)

POWER VR assembly

MIC assembly

POWER assembly (AWZ2739)

HEADPHONE assembly

SP TERMINAL assembly

1 2 3 4 5 6 7 8 9

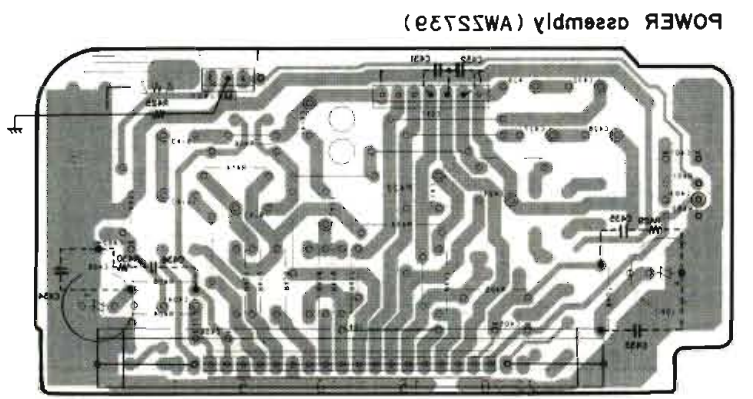
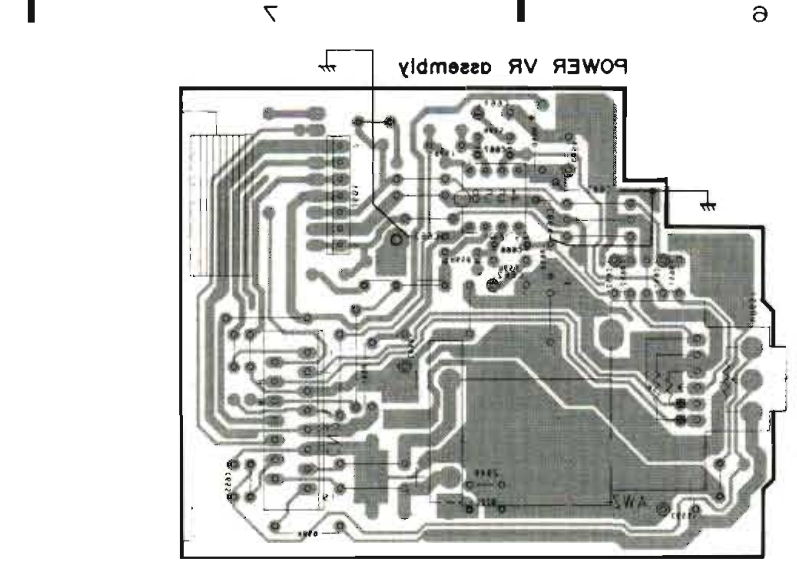
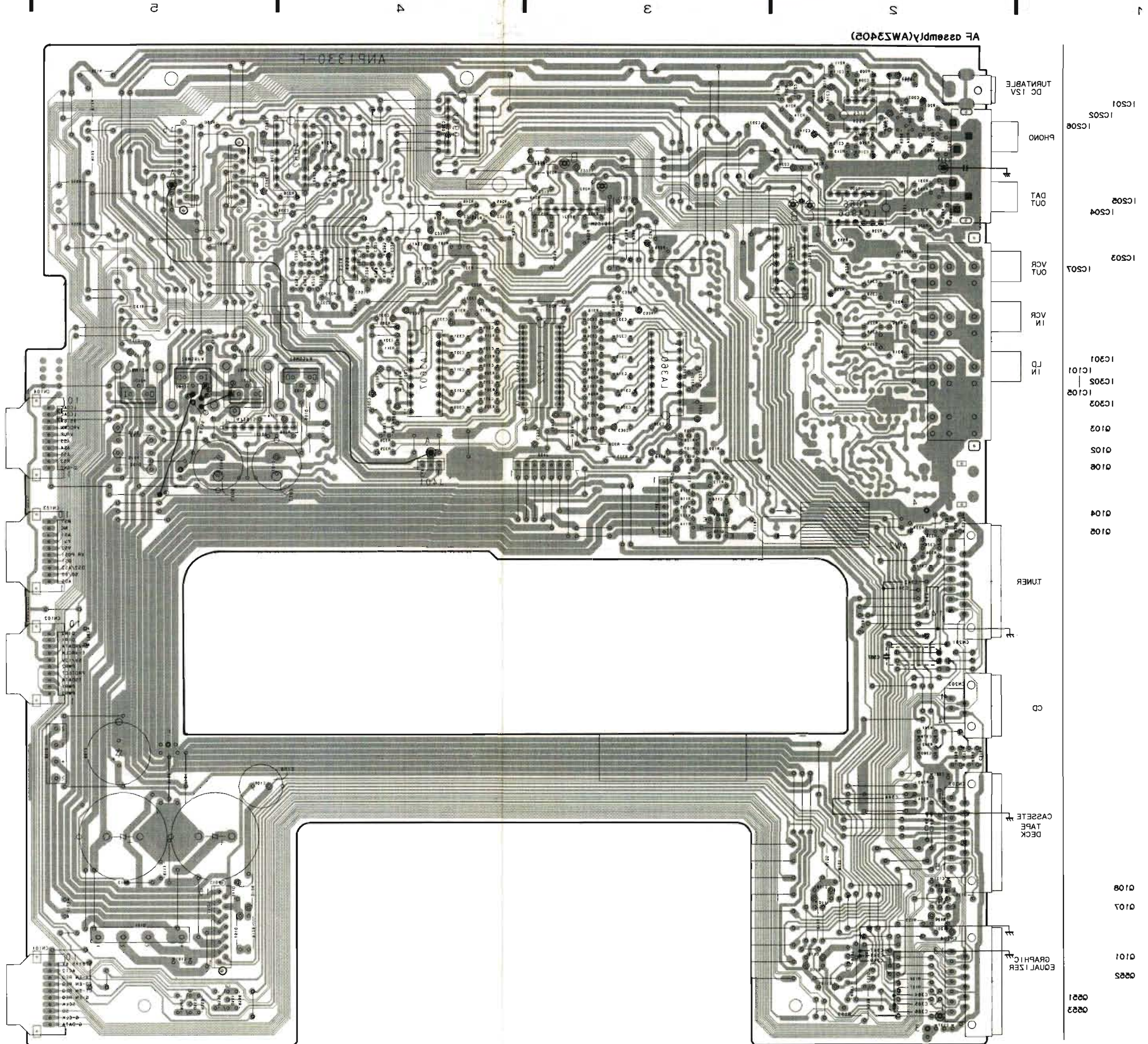
A

B

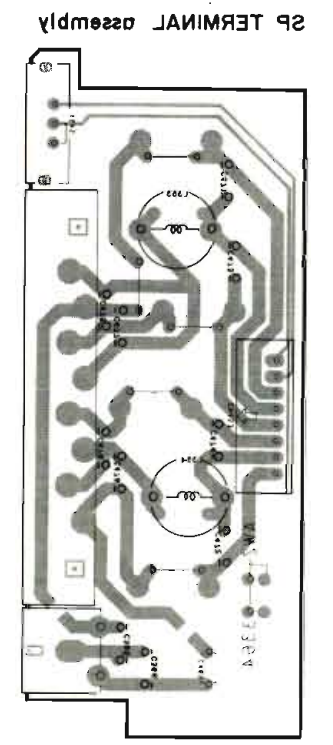
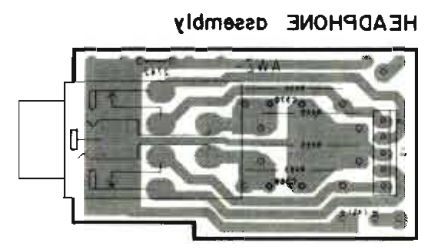
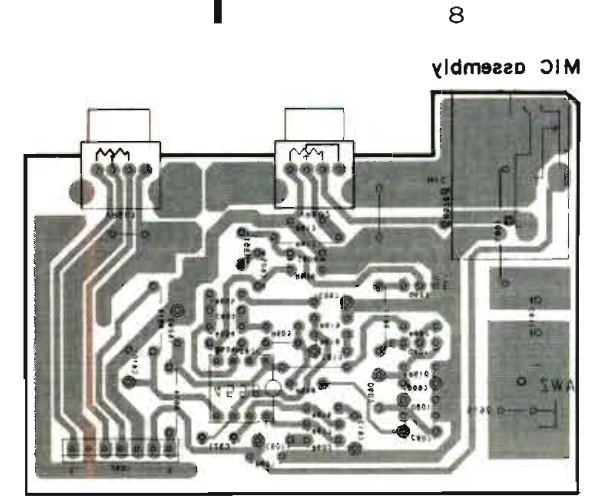
C

D

1 2 3 4 5 6 7 8 9

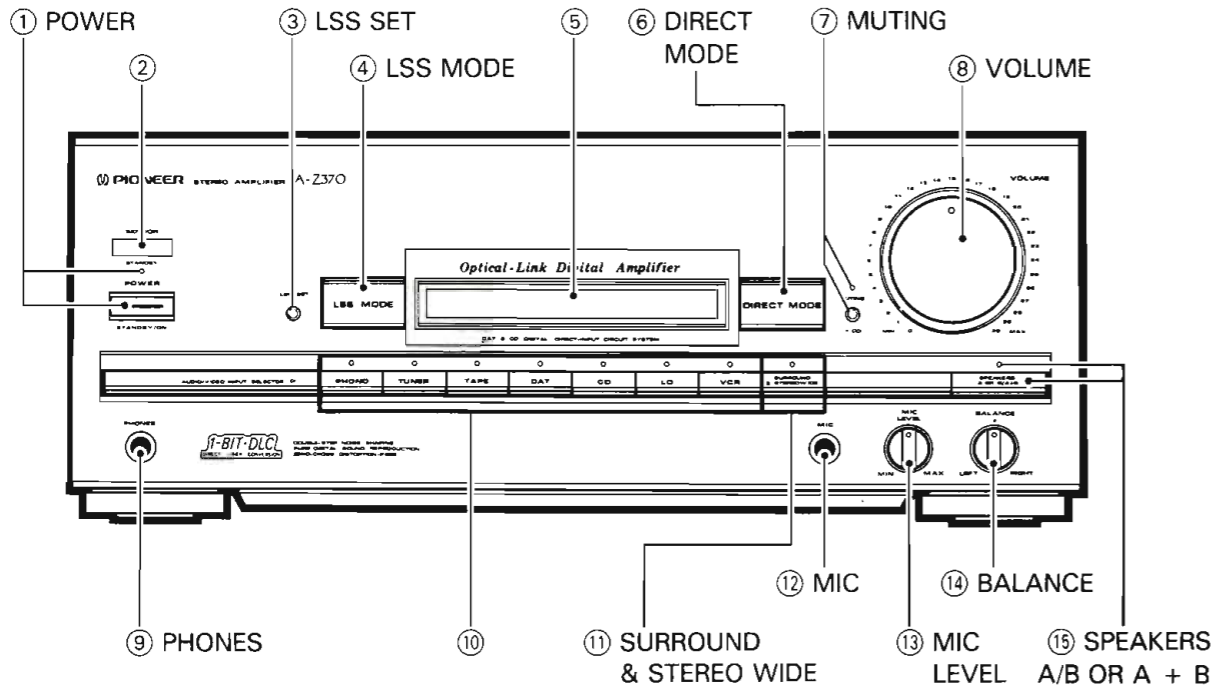


This P.C.B. connection diagram is viewed from the foil side.

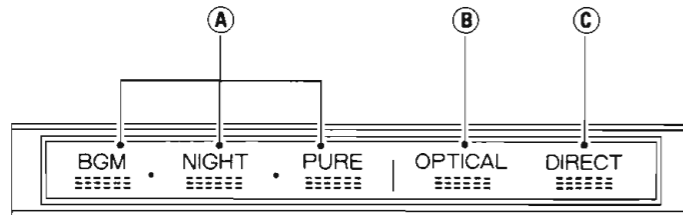


6. PANEL FACILITIES

Front panel



Display section



① POWER STANDBY/ON switch/indicator

This is the switch for electric power.

ON ... When set to the ON position, power is supplied and the unit becomes operational.

STANDBY ... When set to the STANDBY position, the main power flow is cut and the unit is no longer fully operational. A minute flow of power feeds the unit to maintain operation readiness.

The indicator above the switch lights when the power is STANDBY, and goes out during ON.

② Remote sensor

③ LSS SET button

Use to operate the Listening Style Selector memory.

④ LSS MODE button

Use to recall the Listening Style Selector.

⑤ Display section

A This shows the position of the listening style selector.

B This lights when you play a CD.

C This lights when you can select CD and DAT direct mode.

⑥ DIRECT MODE button

Use this when you want by-pass sound quality adjustment circuitry and listen to a CD or DAT in the direct mode.

⑦ MUTING button/indicator

Use when you want to temporarily cut sound during playback. Press again to return to the previous volume level.

⑧ VOLUME control

⑨ PHONES jack

For stereo headphones.

NOTE:

There is no output from the speakers when headphones are plugged into PHONES jack.

⑩ Input selector buttons/indicators

[PHONO]

Press to play records on a turntable connected to the PHONO input jacks.

[TUNER]

Press to listen to radio broadcast.

[TAPE]

Press to listen to cassette tape.

[DAT]

Press to listen to a DAT playing on a digital audio tape deck connected to the DAT jacks.

[CD]

Press to listen to compact disc.

[LD]

Press to play an LD on a video disc player connected to the LD input jacks.

[VCR]

Press to play a tape on a video cassette recorder connected to the VCR jacks.

⑪ SURROUND & STEREO WIDE button/indicator

By turning this button on, you can enjoy surround reproduction when rear speakers are used.

By turning this button on, you can enjoy STEREO WIDE reproduction with greater left-right spread when rear speakers are not used.

NOTE:

- In the case of a monaural source, SURROUND & STEREO WIDE effects cannot be obtained.
- SURROUND & STEREO WIDE functions do not operate if DIRECT MODE is on.

⑫ MIC (microphone) jack

This is a standard jack for connecting a microphone.

NOTE:

Mike mixing is not possible when CD DIRECT or DAT DIRECT are ON.

⑬ MIC LEVEL control

Used for adjusting the volume of microphone.

⑭ BALANCE control

Used for changing the balance between left and right channels. Usually set to the center position.

⑮ SPEAKERS button (A/ B OR A + B)/indicator

When the SPEAKER MODE selector switch on the rear panel is set to the A/B (left), use this button to switch between sound from speakers A only, and sound from speakers B only.

When the SPEAKER MODE selector switch is set to the A/A + B (right), use this button to switch between sound from speakers A only, and sound from both speakers A and B.

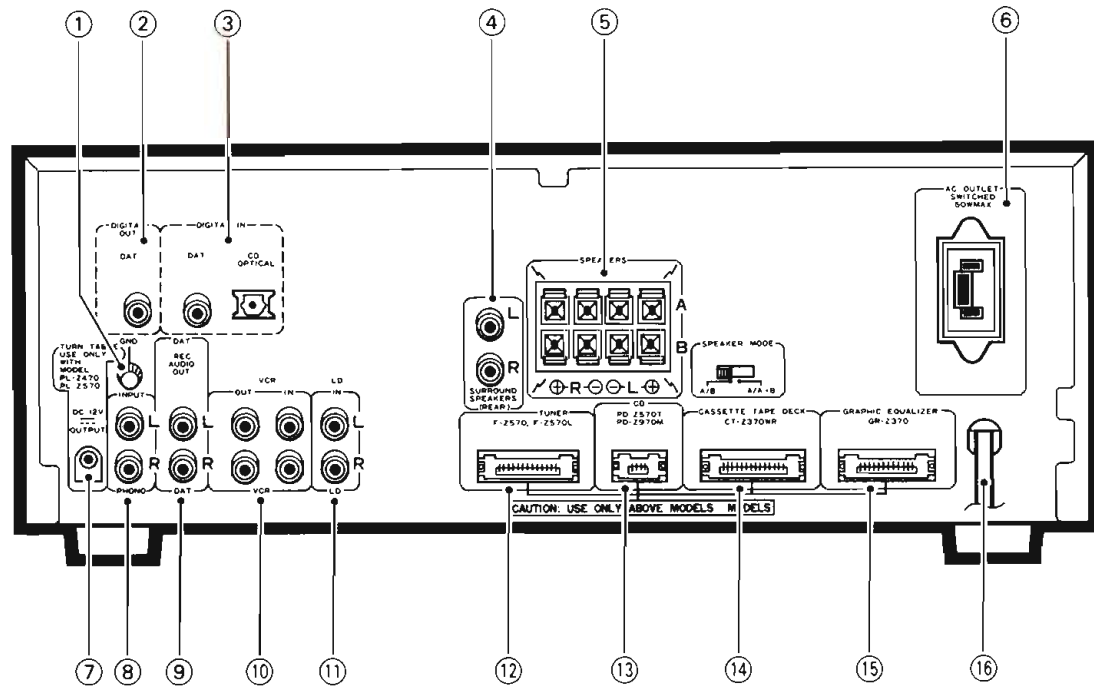
Refer to page 18 No.⑤ concerning SPEAKER MODE selector switch.

Rear panel SPEAKER MODE switch	SPEAKERS	
	Indicator off	Indicator lit
A/B	A	B
A/A + B	A	A + B

NOTE:

If speakers A and B are not both connected, there will be no sound when the button is set for A + B.

REAR PANEL FACILITIES



① Ground terminal (GND)

Connect this to the ground terminal on the turntable (except for PL-Z470/PL-Z570).

② DIGITAL OUT (DAT) jack

Outputs digital signal taken from CD player optical input. A digital audio tape deck's digital input jack (coaxial cable input) can be connected here. Consult with your dealer to see if it's possible to connect your digital audio tape deck.

③ DIGITAL IN jacks

[DAT] A digital audio tape deck's digital output jack (coaxial cable output) can be connected here. Consult with your dealer to see if it's possible to connect your digital audio tape deck.
[CD] Connect a CD player's OPTICAL OUT jack.

④ SURROUND SPEAKERS jacks

Connect the Surround speaker systems.

NOTE:

Connect a speaker system having a nominal impedance of 16 Ω or more.

⑤ SPEAKERS terminals and SPEAKER MODE selector switch

A: Connect to a first set of speakers
B: Connect to a second set of speakers
Set the selector switch to the A/B (left), and use the SPEAKERS button on the front panel to switch between sound from speakers A only, and sound from speakers B only.
If you set the selector switch to the A/A + B (right), use the SPEAKERS button on the front panel to switch between sound from speakers A only, and sound from both speakers A and B.

NOTE:

Connect a speaker system having a nominal impedance ranging from 8 Ω to 16 Ω .

⑥ AC OUTLET (SWITCHED 50 W MAX)

Power supplied through this outlet is turned on and off by the amplifier's POWER switch. Total electrical power consumption of connected equipment should not exceed 50 W. PD-Z570T or PD-Z970M CD player power cord can be connected.

NOTE:

Do not connect appliances with high power consumption such as heaters, irons, or television sets to the AC OUTLET in order to avoid overheating or fire risk. This can cause the amplifier to malfunction.

⑦ TURNTABLE (DC 12 V OUTPUT) jack

This jack supplies power to the turntable. (PL-Z470/PL-Z570)

⑧ PHONO input jacks

Connect the output cord of the turntable to these jacks.

⑨ DAT REC OUT jacks

Connect to audio input jacks of the digital audio tape deck.

⑩ VCR jacks

IN: Connect to the audio output jacks of VCR.
OUT: Connect to audio input jacks of VCR.

⑪ LD input jacks

Connect to audio output jacks of the LD player.

⑫ TUNER jack

Connect the tuner cord here.

⑬ CD jack

Connect the compact disc player (PD-Z570T/PD-Z970M) cord here.

⑭ CASSETTE TAPE DECK jack

Connect the cassette deck cord here.

⑮ GRAPHIC EQUALIZER jack

Connect the graphic equalizer cord here.

⑯ Power cord

Connect this to the AC wall socket.