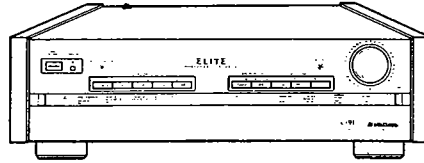


6/86

 **PIONEER**[®]
The future of sound and vision.

Service Manual



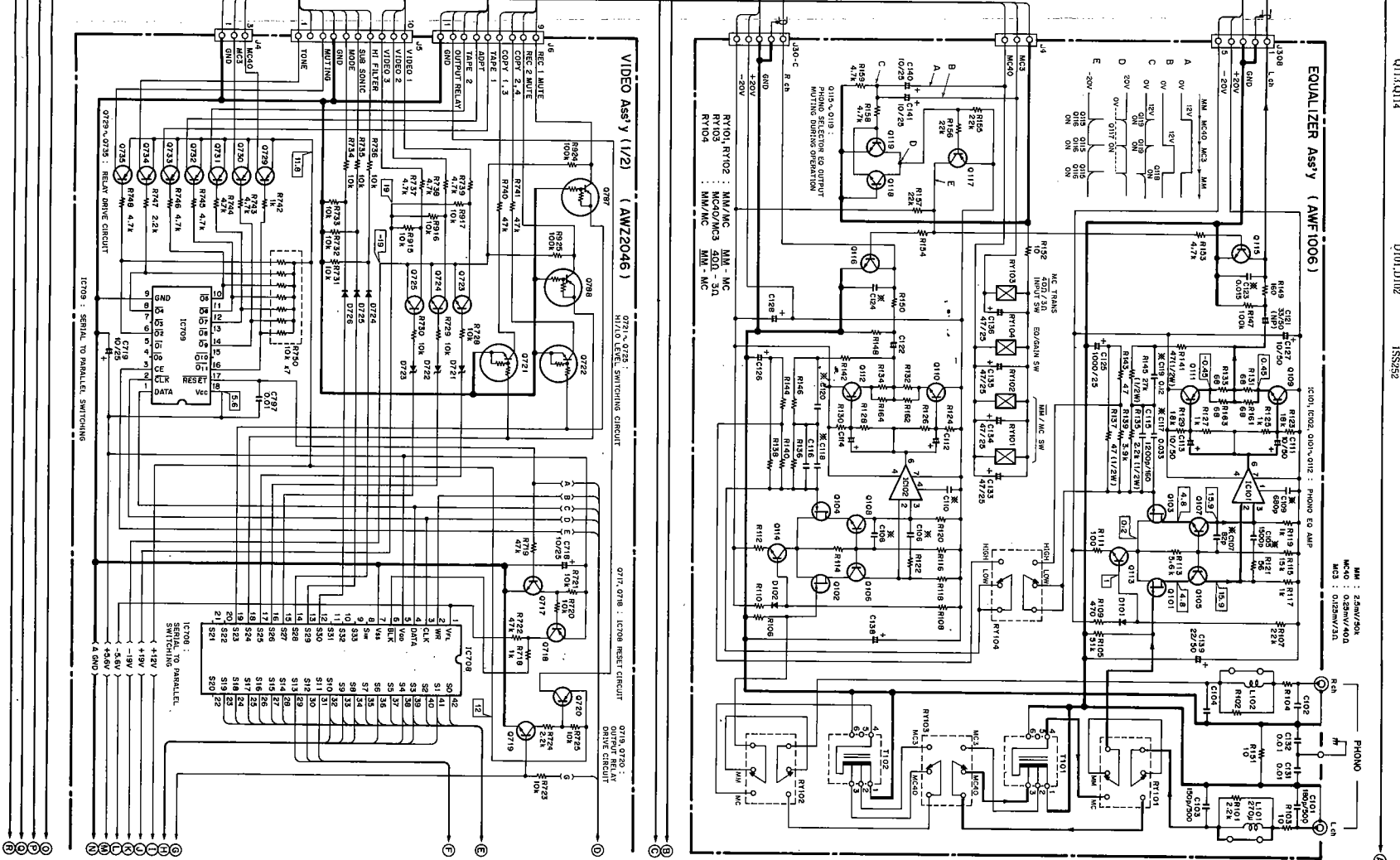
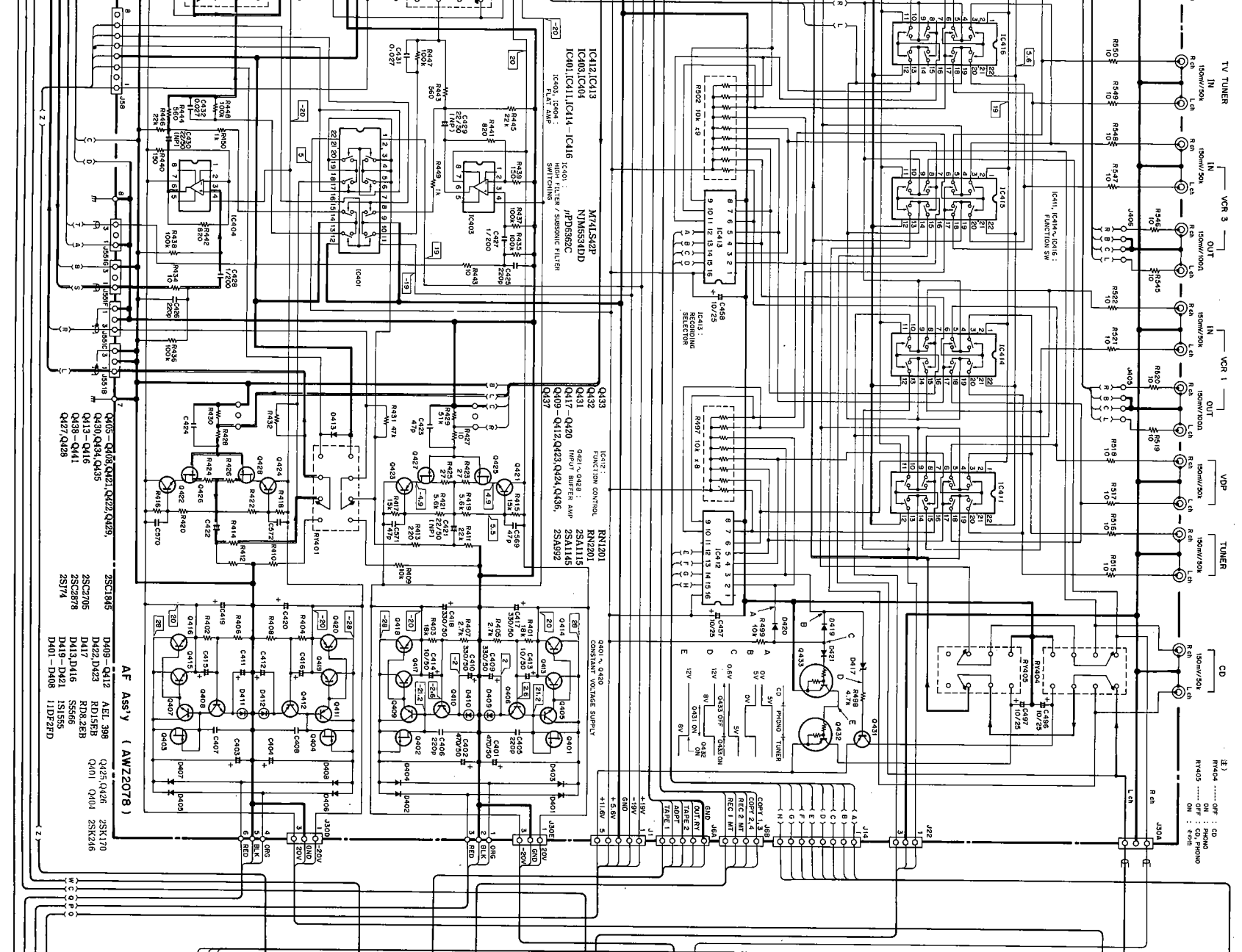
**ORDER NO.
ARZ1636**

STEREO CONTROL AMPLIFIER

C-91

PIONEER ELECTRONIC CORPORATION 4-1, Meguro 1-Chome, Meguro-ku, Tokyo 153, Japan
PIONEER ELECTRONICS SERVICE INC. P.O. Box 1760, Long Beach, California 90801 U.S.A.
PIONEER ELECTRONICS OF CANADA, INC. 505 Cochrane Drive, Markham, Ontario L3R 8E3 Canada
PIONEER ELECTRONIC [EUROPE] N.V. Keetberglaan 1, 2740 Beveren, Belgium
PIONEER ELECTRONICS AUSTRALIA PTY. LTD. 178-184 Boundary Road, Braeside, Victoria 3195, Australia TEL: [03] 580-9911
PIONEER ELECTRONIC CORPORATION 1988





- IC101, IC102 N1M554DD Q109, Q110
- Q117 2SC2328
- Q111, Q112 2SA1115 2SC2303
- Q105, Q108, Q101, Q104 2SA965 2SC2376
- Q113, Q114 2SC1845 2SC1845
- D101, D102 1SS252 1SS252

A

B

C

D

AF assembly (AWZ2078)

SEMICONDUCTORS

Mark	Symbol & Description	Part No.
	C138, C139	CEXA220M50
	C121, C122	CEYANP330M50
	C131, C132	CKCYF103Z50
	C103, C104	CMA151J500
	C101, C102	CMA181J500
	C115, C116	CO5XA122J160

RESISTORS

Mark	Symbol & Description	Part No.
	R135, R136, R145, R146	RDR1/2PM□□□F
	R137, R138, R141, R142	RDR1/2PM□□□J
	R131 - R134, R161 - R164	RD1/4PMFL680J
	R152	RD1/4PM100J
	R153 - R159	RD1/8PM□□□J
	Other resistors	RDR1/4PM□□□J

OTHERS

Mark	Symbol & Description	Part No.
	Terminal 2P (PHONO)	AKB1001

Control assembly (AWZ1055)

SEMICONDUCTORS

Mark	Symbol & Description	Part No.
	IC304, IC305	M74LS42P
	IC301	PDE012
	IC302, IC303	PD0012A
	Q301, Q302	2SC2458
	D301 - D306	1SS131

COILS

Mark	Symbol & Description	Part No.
	X301 Ceramic resonator	ASS-046
	L301 Inductor (1mH)	ATH-098

CAPACITORS

Mark	Symbol & Description	Part No.
	C305, C306	CCDCH101J50
	C301, C304	CEANL470M16
	C307 - C310	CEAS100M25
	C302, C303	CKDYB103K50
	C313	CKDYB103K500
	C311, C312	CKDYF103Z50

RESISTORS

Mark	Symbol & Description	Part No.
	R301 Resistor array	RA4S103J
	R310 Resistor array	RA8S103J
	Other resistors	RD1/8PM□□□J

AF assembly (AWZ2078)

SEMICONDUCTORS

Mark	Symbol & Description	Part No.
	IC417, IC418	LC4966
	IC407 - IC410	M5201P
	IC405, IC406	M5220P
	IC412, IC413	M74LS42P
	IC403, IC404	NJM5534DD
	IC401, IC411, IC414 - IC416	μPD6362C

RESISTORS

Mark	Symbol & Description	Part No.
	Q433	RN1201
	Q432	RN2201
	Q431	2SA1115
	Q417 - Q420	2SA1145
	Q409 - Q412, Q423, Q424, Q436, Q437	2SA992
	Q405 - Q408, Q421, Q422, Q429, Q430, Q434, Q435	2SC1845
	Q413 - Q416	2SC2705
	Q438 - Q441	2SC2878
	Q427, Q428	2SJ74
	Q425, Q426	2SK170
	Q401 - Q404	2SK246
	D409 - Q412	AEL-398
	D422, D423 Zener diode	RD15EB
	D417 Zener diode	RD8.2EB
	D413, D416	S5566
	D419 - D421	1S1555
	D401 - D408	11DF2FD

OTHERS

Mark	Symbol & Description	Part No.
	Terminal 4P (TAP E1, AUDIO ADAP, VCR1)	AKB-115
	Terminal 6P	AKB-117
	Terminal 6P	AKB1005
	Terminal 6P	AKB1066
	Other resistors	RDR1/4PM□□□J

Video assembly (AWZ2046)

SEMICONDUCTORS

Mark	Symbol & Description	Part No.
	IC708	LC7570
	IC709	PD0012A
	IC707	TC4011BP
	IC701 - IC706	TC4066BP
	IC710	TC4069UBP
	Q716	RN1201
	Q721, Q722	RN1203
	Q787, Q788	RN2203
	Q714, Q715, Q718, Q720, Q726, Q729 - Q736, Q747, Q749, Q751, Q752, Q766, Q781, Q783, Q785	2SA1115
	Q704	2SA1145
	Q739, Q745	2SA1346
	Q708, Q742	2SA985A
	Q741	2SC2275
	Q717, Q719, Q723 - Q725, Q737, Q743, Q748, Q750, Q753 - Q765, Q767 - Q774, Q776 - Q779, Q786	2SC2603
	Q702	2SC2705
	Q713, Q744, Q780, Q782, Q784	2SC2878
	Q728, Q738, Q740, Q746	2SC3400
	Q706, Q710, Q712	2SD836A
	Q701, Q703, Q705, Q707, Q709, Q711	2SK246

CAPACITORS

Mark	Symbol & Description	Part No.
	C717 (47000 μF/5.5V)	ACH1070
	C745	CCCH121J50
	C740, C742	CCCH330J50
	C764	CCCH470J50
	C763	CCCH680J50
	C749, C787, C794	CCCSL101J50
	C739, C785	CCCSL221J50
	C743, C793	CCCSL270J50
	C747, C759, C768, C771	CCCSL330J50
	C766	CCCSL390J50
	C781	CEAS010M50
	C718, C719, C723, C744, C754, C792, C796	CEAS100M25
	C722	CEAS100M50
	C708, C710, C724, C725, C738, C751, C760, C783, C784	CEAS101M10
	C748, C750, C769, C772, C776, C777	CEAS101M16
	C703 - C706, C712	CEXA101M25
	C729, C732, C733, D736, C773 - C775	CEAS102M10
	C791	CEAS102M6
	C713	CEAS101M25
	C711	CEAS102M25

AF assembly (AWZ2078)

SEMICONDUCTORS

Mark	Symbol & Description	Part No.
	D713 Zener diode	RD13EB
	D714 Zener diode	RD13ESB3
	D721 - D723 Zener diode	RD18EB
	D753 Zener diode	RD2.7ESB
	D709, D710 Zener diode	RD20ESB2
	D729, D730 Zener diode	RD4.3ESB1
	D750 Zener diode	RD5.6ESB2
	D743 Zener diode	RD6.2ESB2
	D712 Zener diode	RD6.8ESB2
	D711 Zener diode	1SS252
	D724 - D726, D731 - D733, D735 - D742, D744, D746, D751, D752	10E2FD
	D715 - D718	S5566
	D701 - D708, D747	

COILS

Mark	Symbol & Description	Part No.
	L701 - L704 Inductor (100 μH)	ATH-050
	L712 Inductor (5.6 μH)	ATH-065
	L708 Inductor (15 μH)	ATH-075
	L705, L711 Inductor (10 μH)	ATH-078
	L714 Inductor (47 μH)	ATH-082
	L716, L717 Inductor (1mH)	ATH-098
	L710 Inductor (33 μH)	ATH-100
	L706, L707, L713 Inductor (56 μH)	ATH-104
	DL701 Delay cable	ATL-034

5. SCHEMATIC DIAGRAM

A

1. RESISTORS:
Indicated in Ω, 1/4W, and 1/8W, ±5% tolerance unless otherwise noted. K, M, ML, (M), (F), ±1%, (G), ±2%, (K), ±10%, (M), ±20% tolerance
2. CAPACITORS:
Indicated in capacity (μF)/voltage (V) unless otherwise noted. p, pf, indication without voltage is 50V except electrolytic capacitor.
3. VOLTAGE, CURRENT:
V: Signal voltage at W + W, 8Ω output (1 KH)
V: DC voltage (V) at no input signal value in () is DC voltage at rated power.

4. OTHERS:

- ⊙: Signal route.
 - ⊕: Adjusting point.
 - The Δ mark found on some component parts indicates the importance of the safety factor of the part. Therefore, when replacing, be sure to use parts of identical designation.
 - X marked capacitors and resistors have parts numbers.
 - The underlined indicates the switch position.
- This is the basic schematic diagram, but the actual circuit may vary due to improvements in design.

5. SWITCH

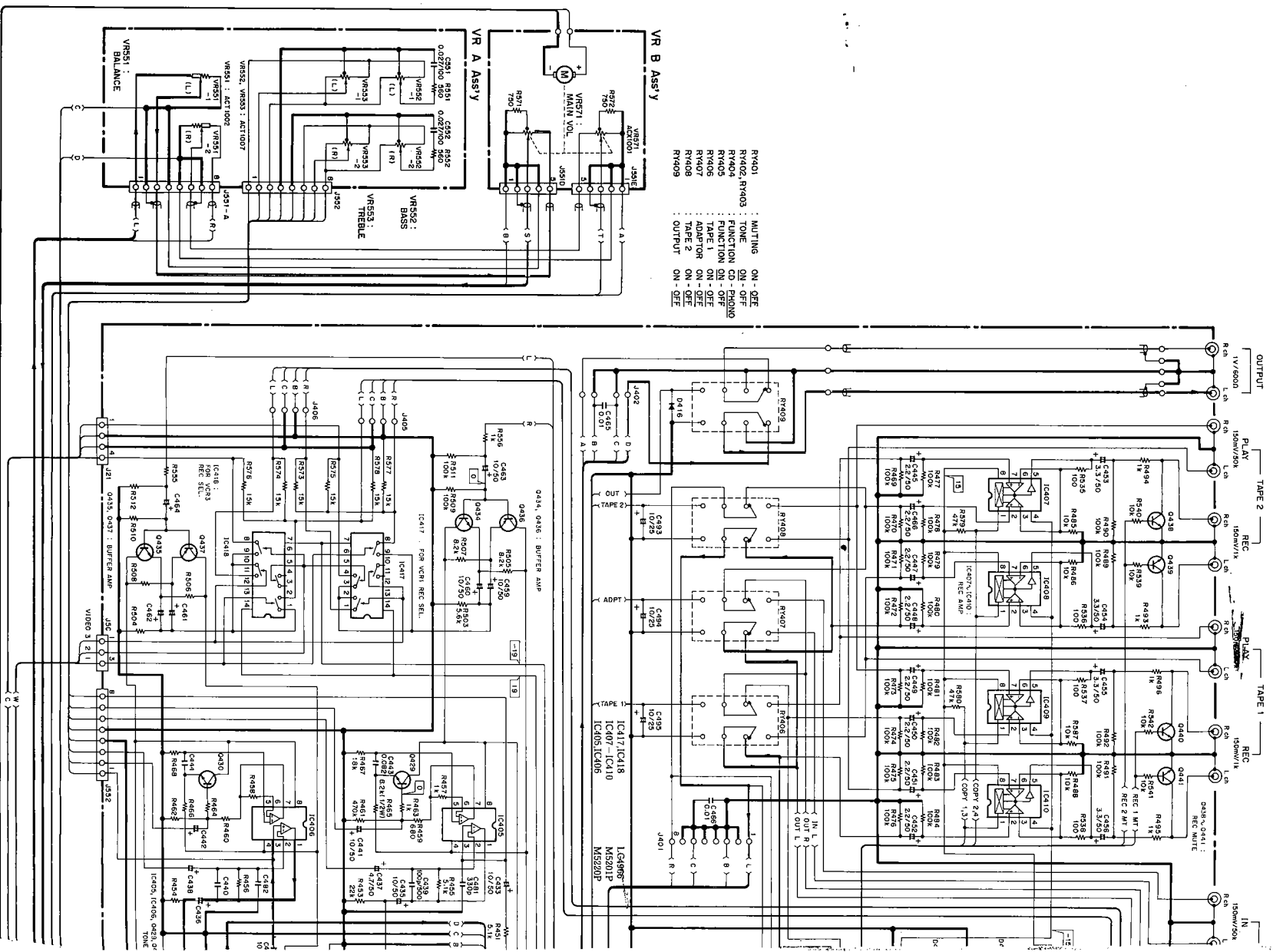
S1: Power switch ON - OFF

B

- S341: V. D. P.
- S342: VIDEO 1
- S343: VIDEO 2
- S344: VIDEO 3
- S345: VAUX
- S346: CD
- S347: PHONO
- S348: TUNER
- S349: TAPE 1
- S350: TAPE 2
- S351: RESEL
- S352: AUDIO ADAPTOR
- S353: VIDEO ADAPTOR
- S354: ENHANCER
- S355: HIGH CUT
- S356: SUBSONIC FILTER
- S357: MODE
- S358: DUBBING
- S359: PHONO SELECTOR
- S360: MUTE
- S361: VIDEO FUNCTION
- S362: STAND-BY
- S391: TONE

The underlined indicates the switch position.

C



Mark	Symbol & Description	Part No.
	C752, C753	CEAS220M16
	C756	CEAS221M10
	C728, C731, C735	CEAS221M16
	C761	CEAS331M16
	C714, C801	CEAS332M25
	C780	CEAS4R7M50
	C737, C741, C788, C789	CEAS470M10
	C758, C770	CEAS470M16
	C727, C730, C734, C778	CEAS470M25
	C709, C726, C757	CEAS471M10
	C701, C702	CEAS471M35
	C707	CEHAQ101M10
	C715, C716	CEHAQ101M25
	C746, C762	CKCYF102Z50
	C755, C765, C767, C782, C797	CKCYF103Z50
	C720, C721	CKCYF473Z50

Mark	Symbol & Description	Part No.
	R750 Resistor array	RA7S103J
	R795, R800, R835, R883, R887, R891	RD1/2PM□□□J
	R779, R781, R789, R791, R901, R903	RD1/4PM□□□J
	R867	FEA1/4PL680J
△	R912 - R914	FEA1/4PS□□□J
△	R904	RS1LMF4R7J
△	Other resistors	RD1/8PM□□□J

Mark	Symbol & Description	Part No.
	Terminal 3P (VIDEO1, VIDEO3)	AKB-134
	Terminal 3P (V ADAPTOR)	AKB1067
	Terminal 1P (MON.)	AKB1068
	Mini Jack (REMOTE CONTROL)	AKN-207
	5P DIN socket (RF:MOD)	AKP-081

Mark	Symbol & Description	Part No.
	IC601 - IC606	CX-894
	IC608, IC609	TC4053BP
	IC607	TC4066BP
	O601, O602, O605, O608, O609, O610	2SA1048
	O619	2SA965
	O613, O615, O617	2SC2235
	O603, O604, O607, O608, O611, O612, O620	2SC2458
	O614, O616, O618	2SK246

Mark	Symbol & Description	Part No.
	D602, D604, D606 Zener diode	RD13ESB2
	D607 Zener diode	RD5.1ESB1
	D608 - D619	1SS252
	D601, D603, D605	11E2
	D620	RD6.8ESB2

Mark	Symbol & Description	Part No.
	C619, C620, C625, C626, C631, C632	CCCSL330J50
	C622, C628, C634	CEAS101M10
	C601, C603, C605, C607, C609, C611, C613, C615, C617, C624, C630, C636, C642	CEAS101M16
	C621, C627, C633	CEAS102M10
	C637 - C640	CEAS330M25
	C623, C629, C635	CEAS331M16
	C602, C604, C606, C608, C610, C612, C614, C616, C618	CEAS470M16
	C641	CEAS470M25
	C643, C644	CKDYX473M25

Mark	Symbol & Description	Part No.
	R670 Resistor array	RA6S104J
	R609, R610, R615, R616, R623, R624, R629, R630, R637, R638, R643, R644	RD1/2PM□□□J
	R649	RD1/4PM222J
	R650	RS1LMF4R7J
△	Other resistors	RD1/8PM□□□J

Mark	Symbol & Description	Part No.
	4P Mini DIN socket (VCR1, VCR3, TV/AUX IN, MONITOR OUT)	AKP1016

Mark	Symbol & Description	Part No.
	D349, D351, D353, D355, D357, D368 - D372	AEL-451
	D341 - D348, D359 - D366, D373 - D381	AEL1004
	D350, D352, D354, D356, D358	AEL1005

Mark	Symbol & Description	Part No.
	D349, D351, D353, D355, D357, D368 - D372	AEL-451
	D341 - D348, D359 - D366, D373 - D381	AEL1004
	D350, D352, D354, D356, D358	AEL1005

Mark	Symbol & Description	Part No.
	S341 - S362 Tact switch (MUTE, VIDEO ADAPTOR, TAPE1, V/AUX, V.D.P, VIDEO1, CD, TAPE2, ENHANCER, MODE, VIDEO FUNCTION, DUBING, HI CUT, REC SEL, PHONO, VIDEO2, VIDEO3, TUNER, AUDIO ADAPTOR, SUB-SONIC FILTER, PHONO SELECTOR, STAND BY)	ASSG-711

Mark	Symbol & Description	Part No.
	R342, R343 Resistor array	RA4S391J
	R346 Resistor array	RA5S391J
	Other resistors	RD1/8PM□□□J

Mark	Symbol & Description	Part No.
	S391 Tact switch (TONE)	ASG-711

Mark	Symbol & Description	Part No.
	C551, C552 Polyester capacitor	COMXA273J100

Mark	Symbol & Description	Part No.
	VR551 Variable resistor (50K x 2)	ACT1002
	VR552, VR553 Variable resistor (10K x 2)	ACT1007
	R551, R552	RDRI/4PM561J

Mark	Symbol & Description	Part No.
	VR571 Variable resistor (15k x 2)	ACX1017
	R571, R572	RDRI/4PM751J

Mark	Symbol & Description	Part No.
	C798 - C800	CKCYF473Z50

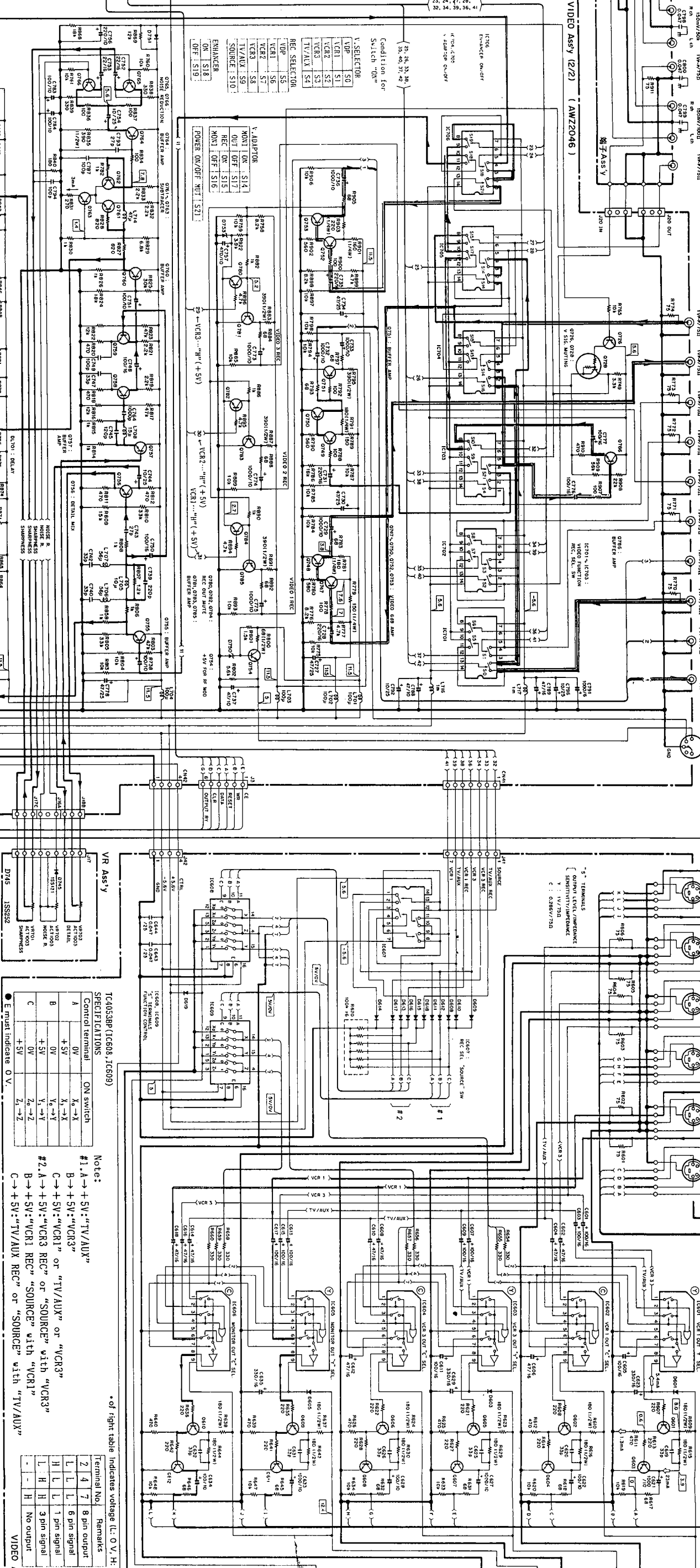
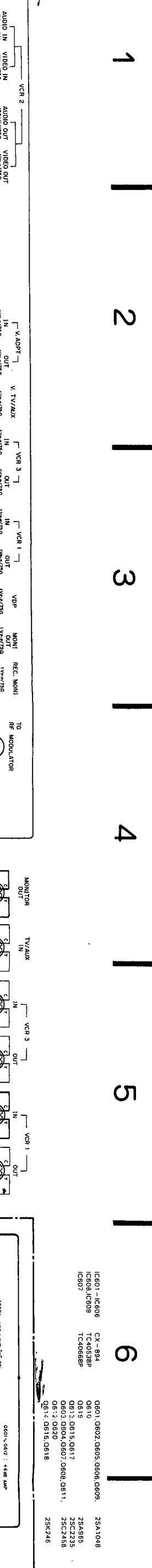
Mark	Symbol & Description	Part No.
	R911	RD1/8PM750J

Mark	Symbol & Description	Part No.
	Terminal 1P (VIDEO2 OUT, VIDEO2 IN)	AKB1004

Mark	Symbol & Description	Part No.
	D745	1SS252

Mark	Symbol & Description	Part No.
	VR701 - VR703 Variable resistor (1k)	ACT1003

Mark	Symbol & Description	Part No.
	L715 Line filter	ATF-163



Condition for Switch ON:
 V. SELECTOR
 MONI ON S14
 REC ON S17
 TV/AUX S10
 TV/AUX S4
 REC SELECTOR
 S5
 S6
 S7
 S8
 S9
 S10
 ENHANCER
 ON S18
 OFF S19

V. ADPTOR:
 MONI ON S14
 REC ON S17
 TV/AUX S10
 TV/AUX S4
 REC SELECTOR
 S5
 S6
 S7
 S8
 S9
 S10
 ENHANCER
 ON S18
 OFF S19

POWER ON/OFF SW: S21
 VCR1: +5V
 VCR2: +5V
 VCR3: +5V

TC4053BP (IC608, IC609)

SPECIFICATIONS

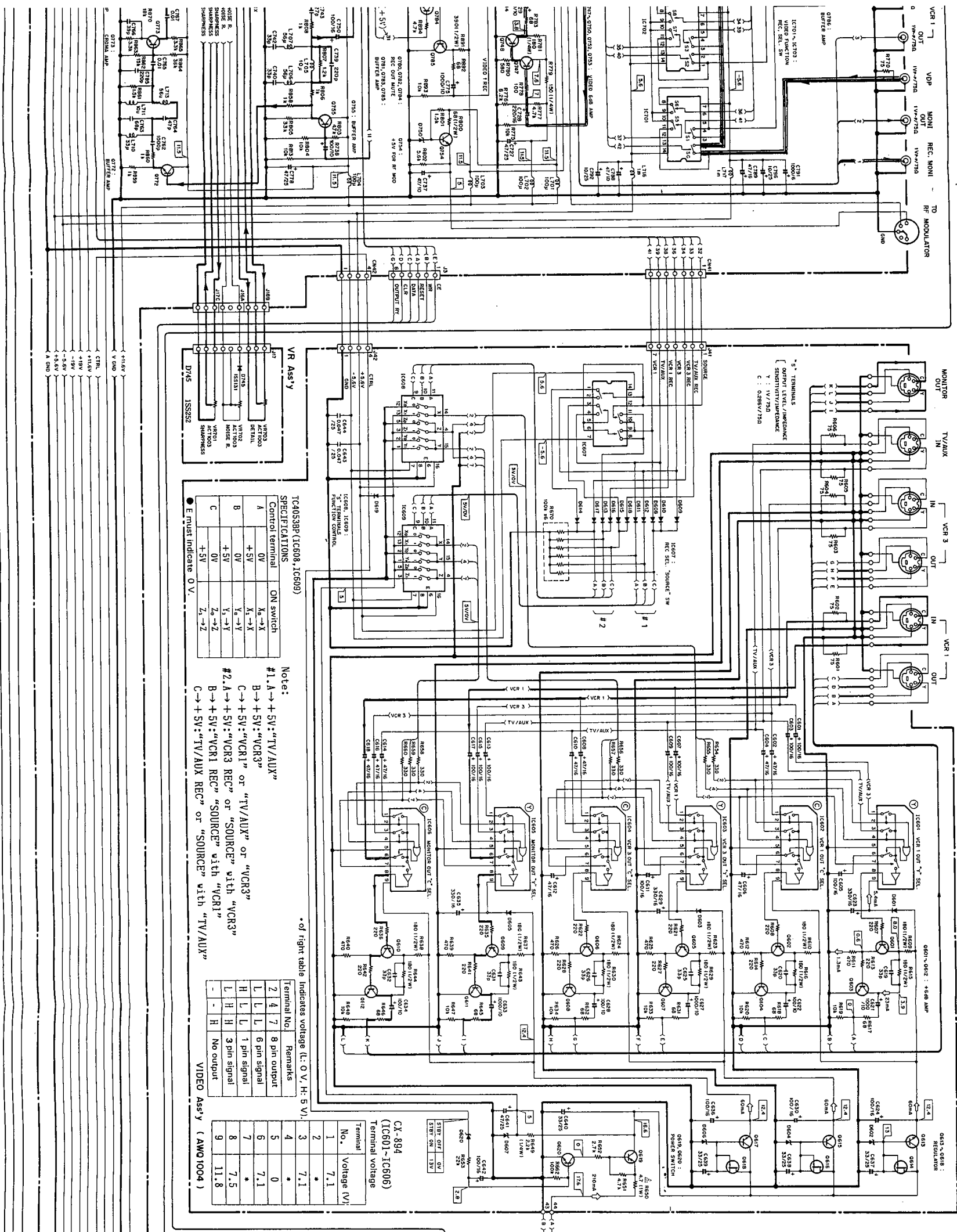
Control terminal	ON switch
A	K ₁ -X
B	+5V
C	OV
	+5V
	V _i -Y
	Z ₁ -Z ₂
	+5V

Note: #1: A → +5V; "TV/AUX"
 B → +5V; "VCR3"
 C → +5V; "VCR1" or "TV/AUX" or "VCR3"
 #2: A → +5V; "VCR3 REC" or "SOURCE" with "VCR3"
 B → +5V; "VCR1 REC" or "SOURCE" with "VCR1"
 C → +5V; "TV/AUX REC" or "SOURCE" with "TV/AUX"

* of right table indicates voltage (L: 0 V, H: 5 V).

Terminal No.	Remarks
2, 4, 7	B pin output
L, L, L	B pin signal
H, L, L	I pin signal
L, H, H	3 pin signal
-	No output

IC208	IC750	IC716	IC704	ZS41145	D702	IC101-IC106	IC501-IC606		
IC209	IC721, IC722	IC707	IC730, IC745	ZS41346	D713				
IC701-IC706	IC787, IC788	IC710	IC708, IC712	ZS49854	D714				
IC710	IC714, IC715, IC718, IC720, IC726, IC729-IC738, IC747, IC749, IC751, IC752, IC756, IC781, IC783, IC785	IC741	IC741, IC719, IC723-IC725, IC737, IC743, IC748, IC750, IC753-IC755, IC761-IC774, IC776-IC778, IC782-IC784, IC786, IC790, IC792, IC793, IC795, IC797, IC799, IC794, IC796-IC798, IC800, IC802, IC804, IC806, IC808, IC810, IC812, IC814, IC816, IC818, IC820, IC822, IC824, IC826, IC828, IC830, IC832, IC834, IC836, IC838, IC840, IC842, IC844, IC846, IC848, IC850, IC852, IC854, IC856, IC858, IC860, IC862, IC864, IC866, IC868, IC870, IC872, IC874, IC876, IC878, IC880, IC882, IC884, IC886, IC888, IC890, IC892, IC894, IC896, IC898, IC900, IC902, IC904, IC906, IC908, IC910, IC912, IC914, IC916, IC918, IC920, IC922, IC924, IC926, IC928, IC930, IC932, IC934, IC936, IC938, IC940, IC942, IC944, IC946, IC948, IC950, IC952, IC954, IC956, IC958, IC960, IC962, IC964, IC966, IC968, IC970, IC972, IC974, IC976, IC978, IC980, IC982, IC984, IC986, IC988, IC990, IC992, IC994, IC996, IC998, IC1000	ZS41115	D715, D723, D733, D743, D753, D763, D773, D783, D793, D803, D813, D823, D833, D843, D853, D863, D873, D883, D893, D903	IC507	IC601-IC609	IC507	IC601-IC609
	IC786, IC785	IC710	IC741	ZS49854	D714				
	IC783, IC785	IC710	IC741	ZS49854	D714				
	IC783, IC785	IC710	IC741	ZS49854	D714				
	IC783, IC785	IC710	IC741	ZS49854	D714				



IC601 - IC608	CX-894	D601, D602, D605, D606, D609	Z5A1048
IC608, IC609	TC4053BP	D610	D607, D604, D606
IC607	TC4068BP	D611, D612	D607, D618
		D613, D615, D617	D607, D618
		D602, D603, D607, D608, D611	D603, D605, D605
		D612, D620	11E2
		D614, D616, D618	25C2458
			25K246

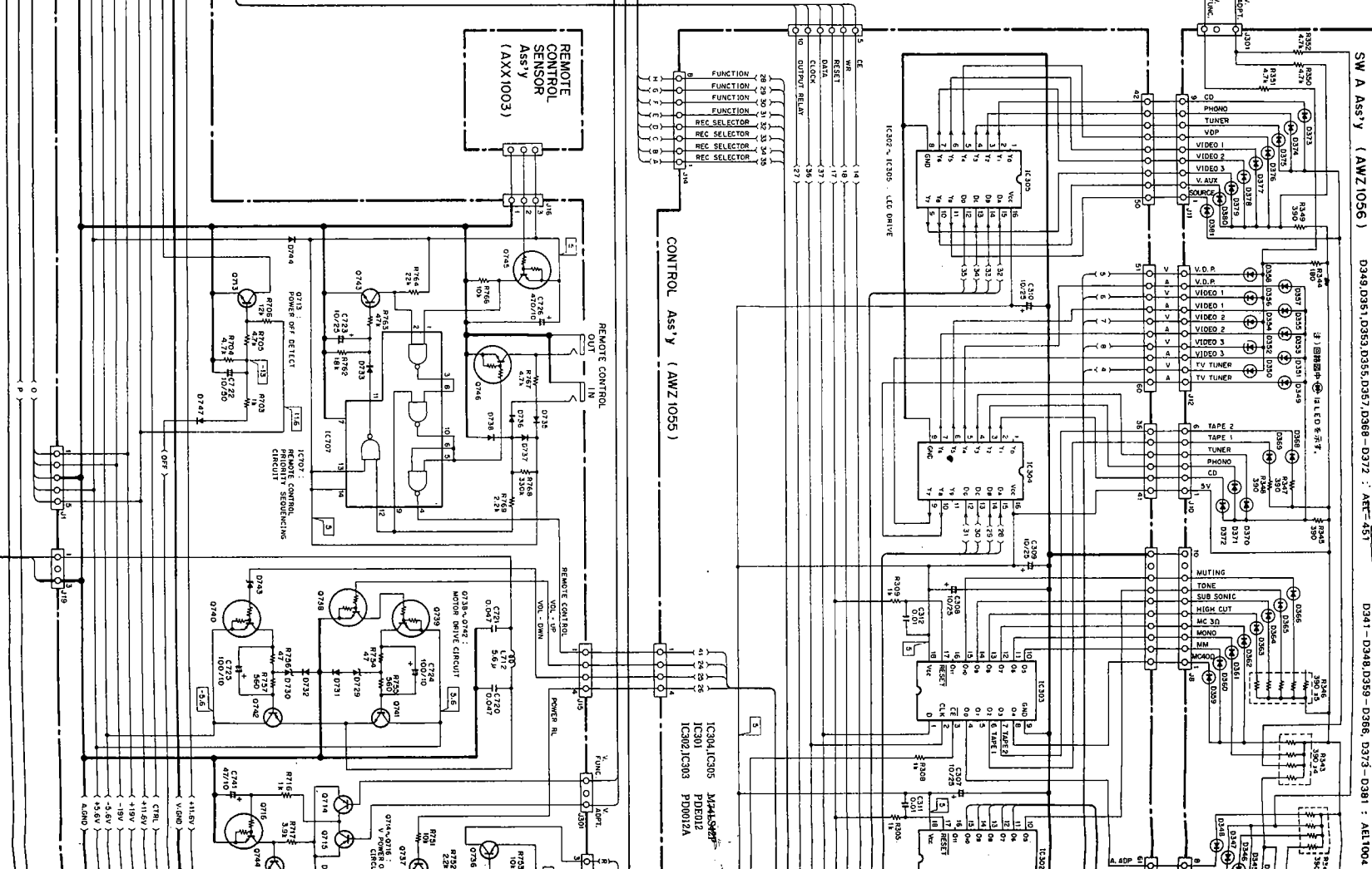
TC4053BP (IC608, IC609)
SPECIFICATIONS

Control Terminal	ON switch
A	K ₁ → X
B	+SV → +VCR3
C	0V → Y
	+SV → Y ₁ → Y
	0V → Z
	+SV → Z

Note:
#1. A → +SV: "TV/AUX"
B → +SV: "VCR3"
C → +SV: "VCR1" or "TV/AUX" or "VCR3"
#2. A → +SV: "VCR3 REC" or "SOURCE" with "VCR3"
B → +SV: "VCR1 REC" or "SOURCE" with "VCR1"
C → +SV: "TV/AUX REC" or "SOURCE" with "TV/AUX"

* of right table indicates voltage (L: 0 V, H: 5 V).

Terminal No.	Remarks	Voltage (V)
1	8 pin output	7.1
2	6 pin output	0
3	6 pin output	7.1
4	1 pin signal	7.5
5	3 pin signal	7.5
6	No output	11.8

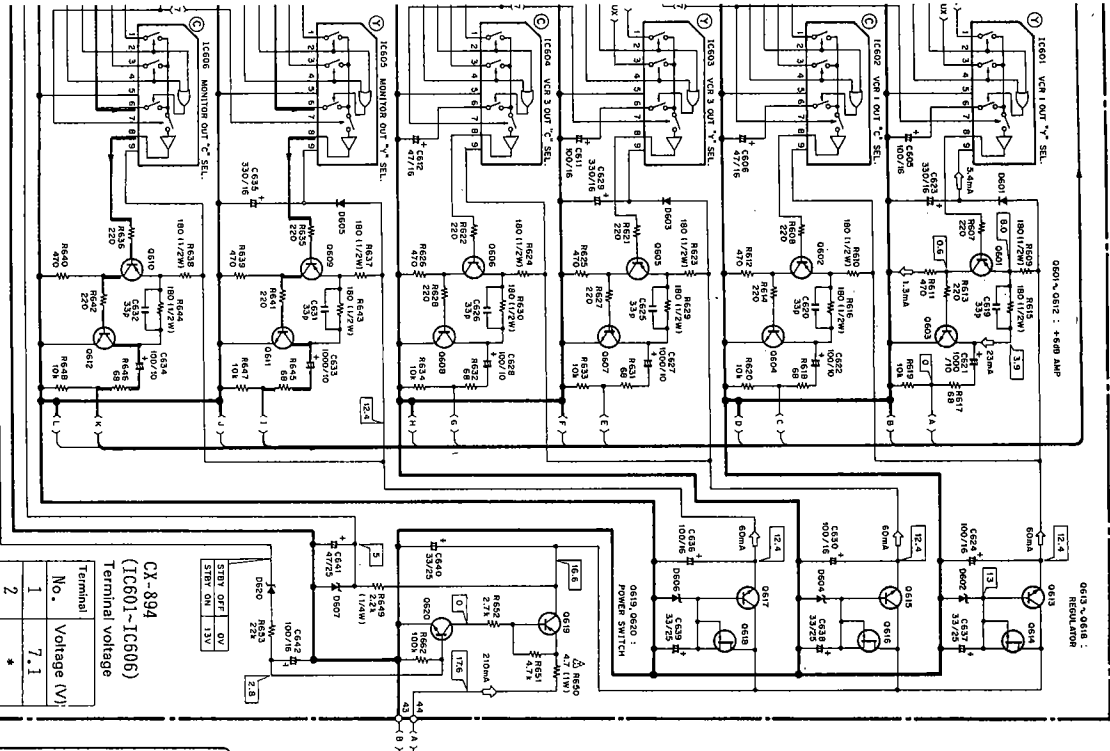


713, 0744, 0780, 0784, 0784
25C2705
25C2706
25C2707
25C2708
25C2709
25C2710
25C2711
25C2712
25C2713
25C2714
25C2715
25C2716
25C2717
25C2718
25C2719
25C2720
25C2721
25C2722
25C2723
25C2724
25C2725
25C2726
25C2727
25C2728
25C2729
25C2730
25C2731
25C2732
25C2733
25C2734
25C2735
25C2736
25C2737
25C2738
25C2739
25C2740
25C2741
25C2742
25C2743
25C2744
25C2745
25C2746
25C2747
25C2748
25C2749
25C2750
25C2751
25C2752
25C2753
25C2754
25C2755
25C2756
25C2757
25C2758
25C2759
25C2760
25C2761
25C2762
25C2763
25C2764
25C2765
25C2766
25C2767
25C2768
25C2769
25C2770
25C2771
25C2772
25C2773
25C2774
25C2775
25C2776
25C2777
25C2778
25C2779
25C2780
25C2781
25C2782
25C2783
25C2784
25C2785
25C2786
25C2787
25C2788
25C2789
25C2790
25C2791
25C2792
25C2793
25C2794
25C2795
25C2796
25C2797
25C2798
25C2799
25C2800
25C2801
25C2802
25C2803
25C2804
25C2805
25C2806
25C2807
25C2808
25C2809
25C2810
25C2811
25C2812
25C2813
25C2814
25C2815
25C2816
25C2817
25C2818
25C2819
25C2820
25C2821
25C2822
25C2823
25C2824
25C2825
25C2826
25C2827
25C2828
25C2829
25C2830
25C2831
25C2832
25C2833
25C2834
25C2835
25C2836
25C2837
25C2838
25C2839
25C2840
25C2841
25C2842
25C2843
25C2844
25C2845
25C2846
25C2847
25C2848
25C2849
25C2850
25C2851
25C2852
25C2853
25C2854
25C2855
25C2856
25C2857
25C2858
25C2859
25C2860
25C2861
25C2862
25C2863
25C2864
25C2865
25C2866
25C2867
25C2868
25C2869
25C2870
25C2871
25C2872
25C2873
25C2874
25C2875
25C2876
25C2877
25C2878
25C2879
25C2880
25C2881
25C2882
25C2883
25C2884
25C2885
25C2886
25C2887
25C2888
25C2889
25C2890
25C2891
25C2892
25C2893
25C2894
25C2895
25C2896
25C2897
25C2898
25C2899
25C2900
25C2901
25C2902
25C2903
25C2904
25C2905
25C2906
25C2907
25C2908
25C2909
25C2910
25C2911
25C2912
25C2913
25C2914
25C2915
25C2916
25C2917
25C2918
25C2919
25C2920
25C2921
25C2922
25C2923
25C2924
25C2925
25C2926
25C2927
25C2928
25C2929
25C2930
25C2931
25C2932
25C2933
25C2934
25C2935
25C2936
25C2937
25C2938
25C2939
25C2940
25C2941
25C2942
25C2943
25C2944
25C2945
25C2946
25C2947
25C2948
25C2949
25C2950
25C2951
25C2952
25C2953
25C2954
25C2955
25C2956
25C2957
25C2958
25C2959
25C2960
25C2961
25C2962
25C2963
25C2964
25C2965
25C2966
25C2967
25C2968
25C2969
25C2970
25C2971
25C2972
25C2973
25C2974
25C2975
25C2976
25C2977
25C2978
25C2979
25C2980
25C2981
25C2982
25C2983
25C2984
25C2985
25C2986
25C2987
25C2988
25C2989
25C2990
25C2991
25C2992
25C2993
25C2994
25C2995
25C2996
25C2997
25C2998
25C2999
25C3000

01-IC806 CX-884
08-IC809 TC4058BP
07-IC808BP TC4058BP

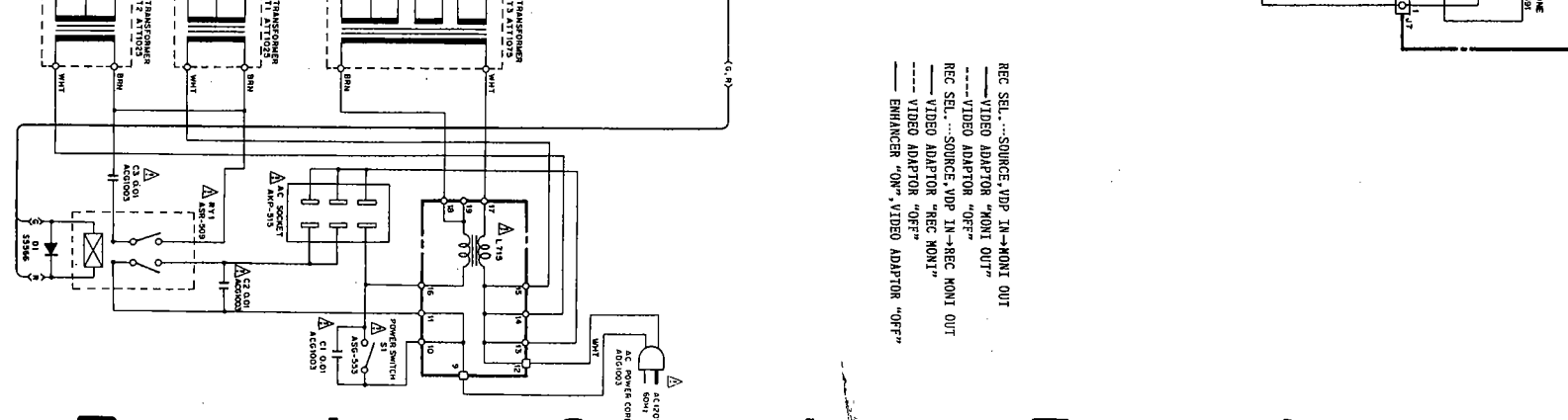
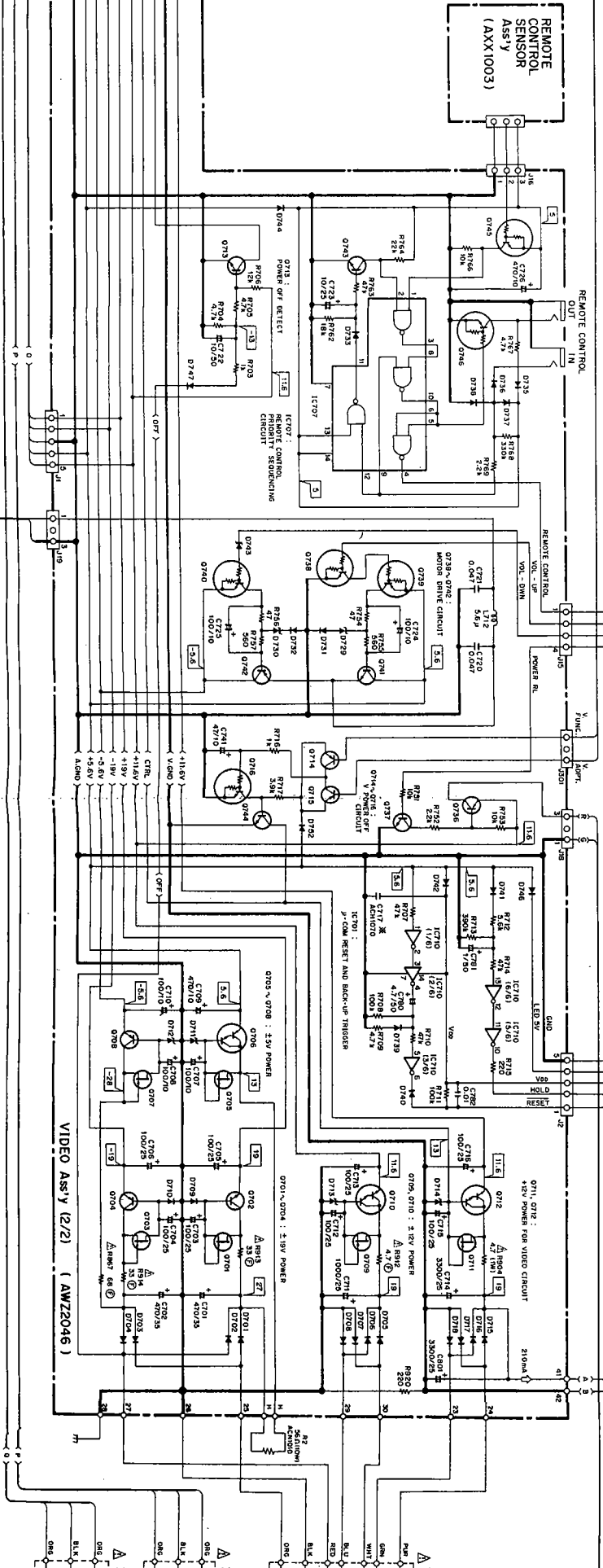
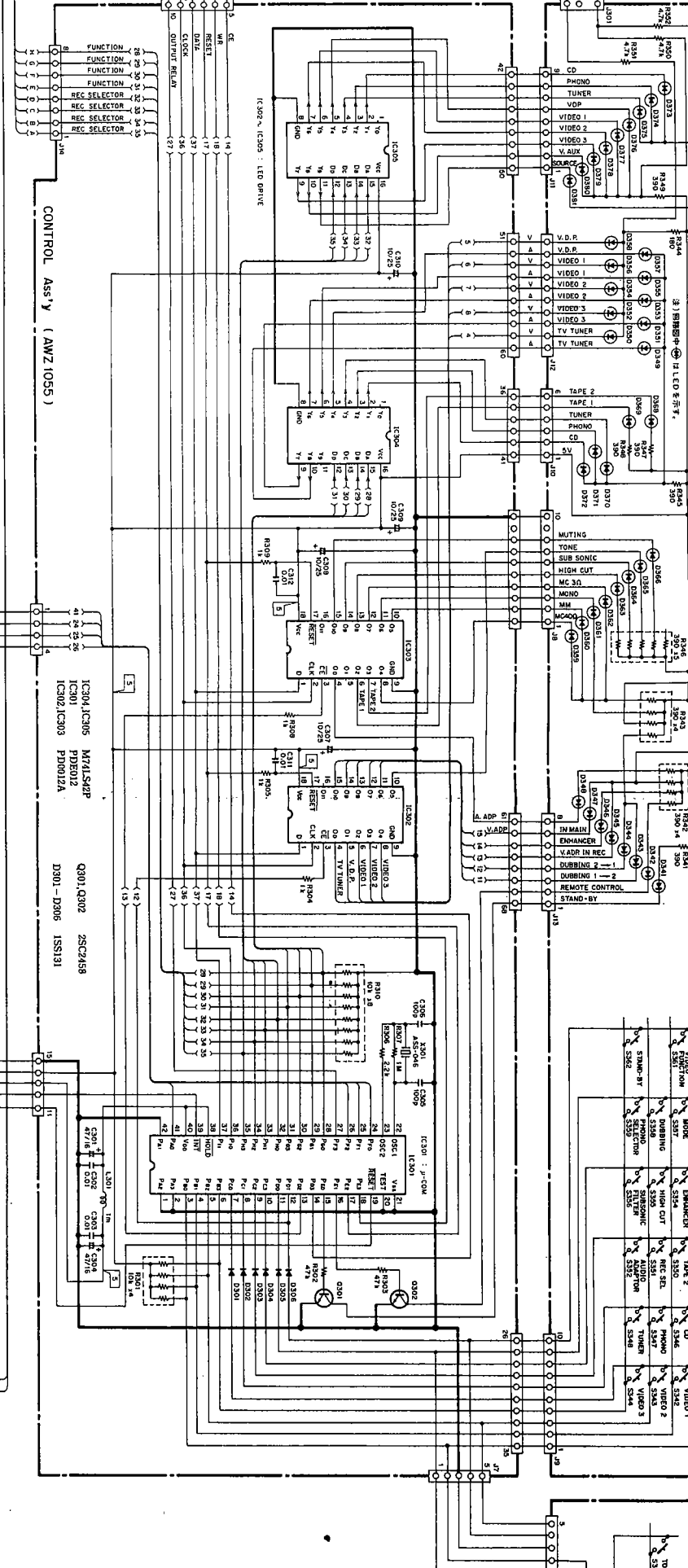
0801,0802,0805,0806,0809, 25A1048
0819 25A985
0813,0815,0817 25C235
0803,0804,0807,0808,0811, 25C248
0812,0820 25C248
0814,0816,0818 25X248

D802,D804,D806 D801,8E82
D807-D818 R05,1E81
D803,D804,D807,0808,0811, 1S822
D812,0820 11E2



IC806 MONITOR OUT "C" SEL.
IC805 VCR 3 OUT "A" SEL.
IC804 VCR 3 OUT "B" SEL.
IC803 VCR 3 OUT "C" SEL.
IC802 VCR 3 OUT "D" SEL.
IC801 VCR 3 OUT "E" SEL.

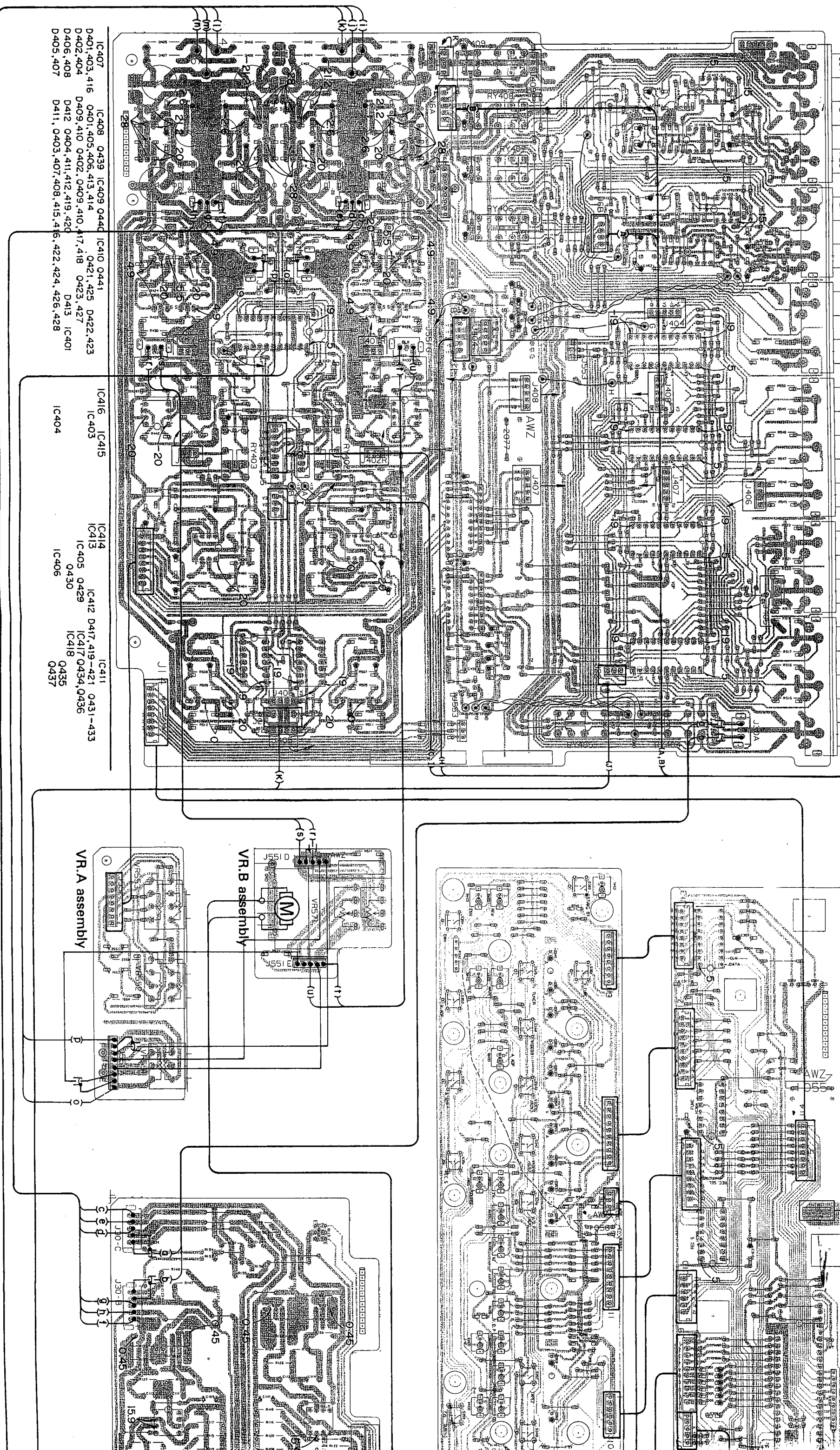
SW A Assy (AWZ1056) D348,D351,D353,D355,D357,D368-D372: AEL-451 D341-D348,D355-D366,D373-D381: AEL1004 D350,D352,D354,D356,D358: AEL1005
SW B Assy



6. P.C. BOARDS CONNECTION DIAGRAM

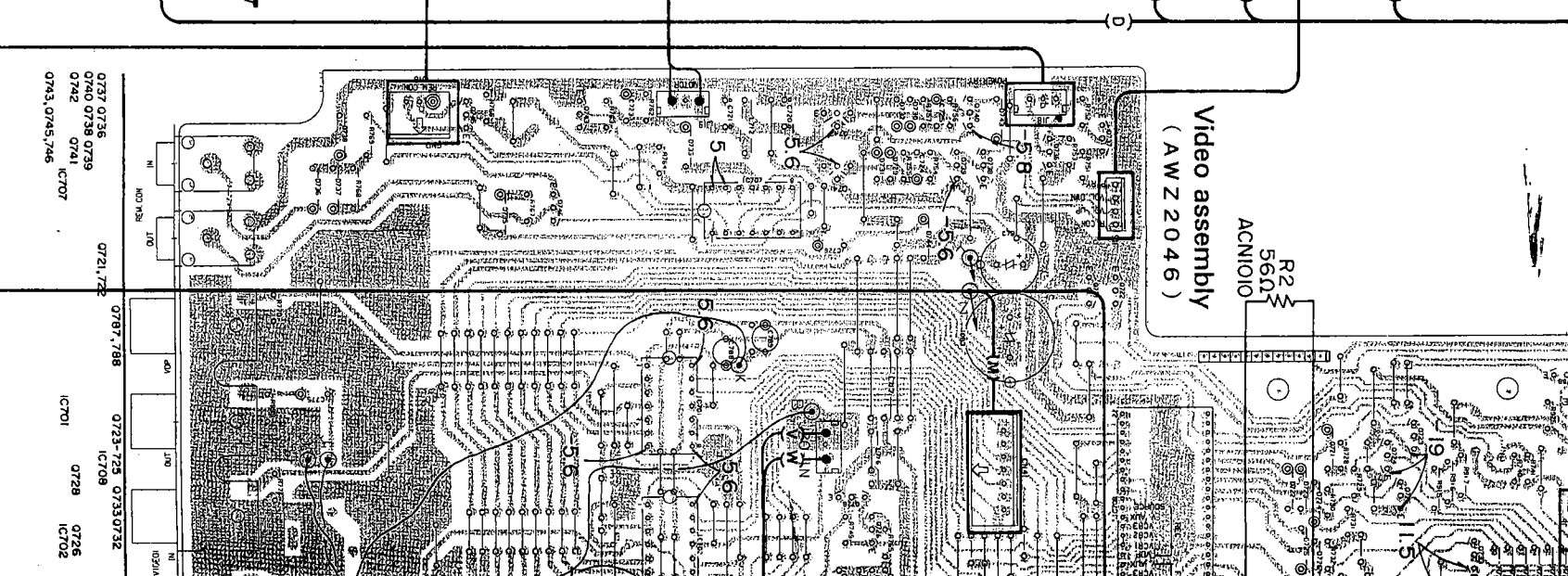
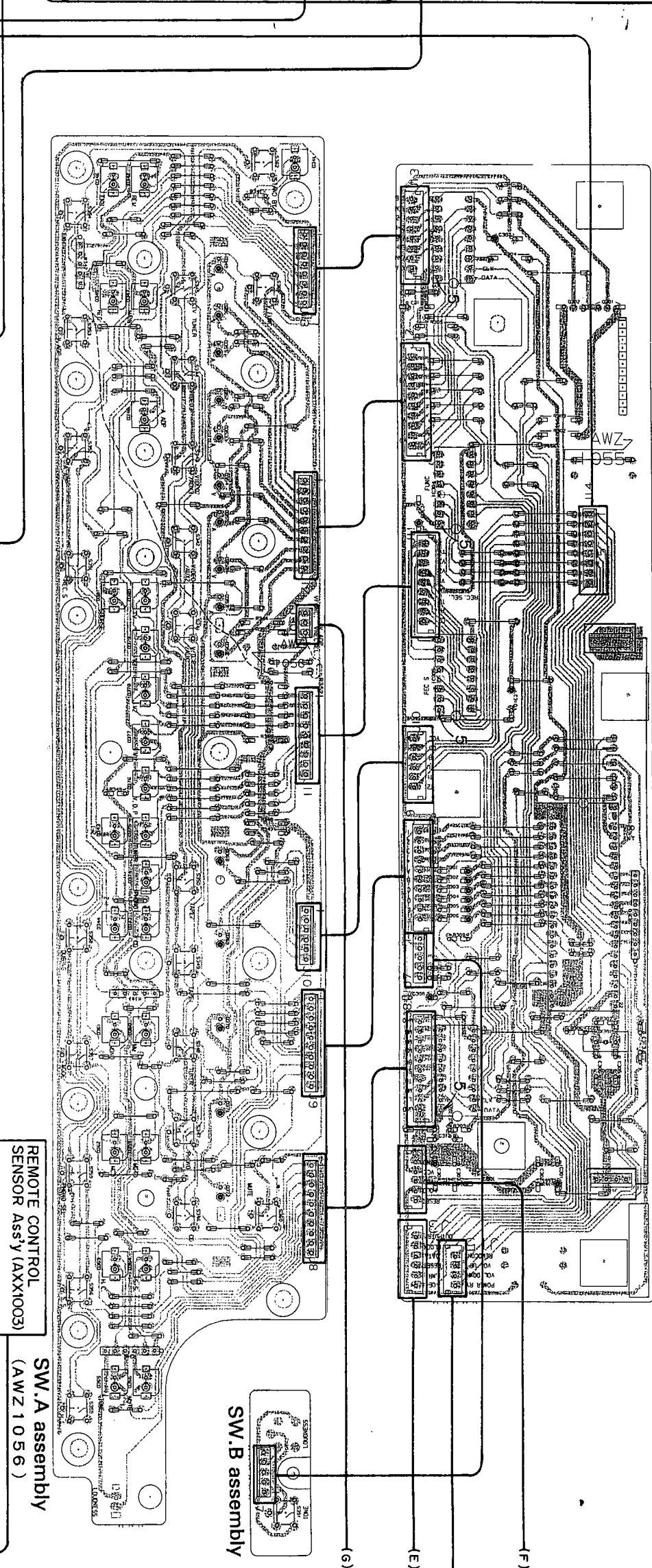
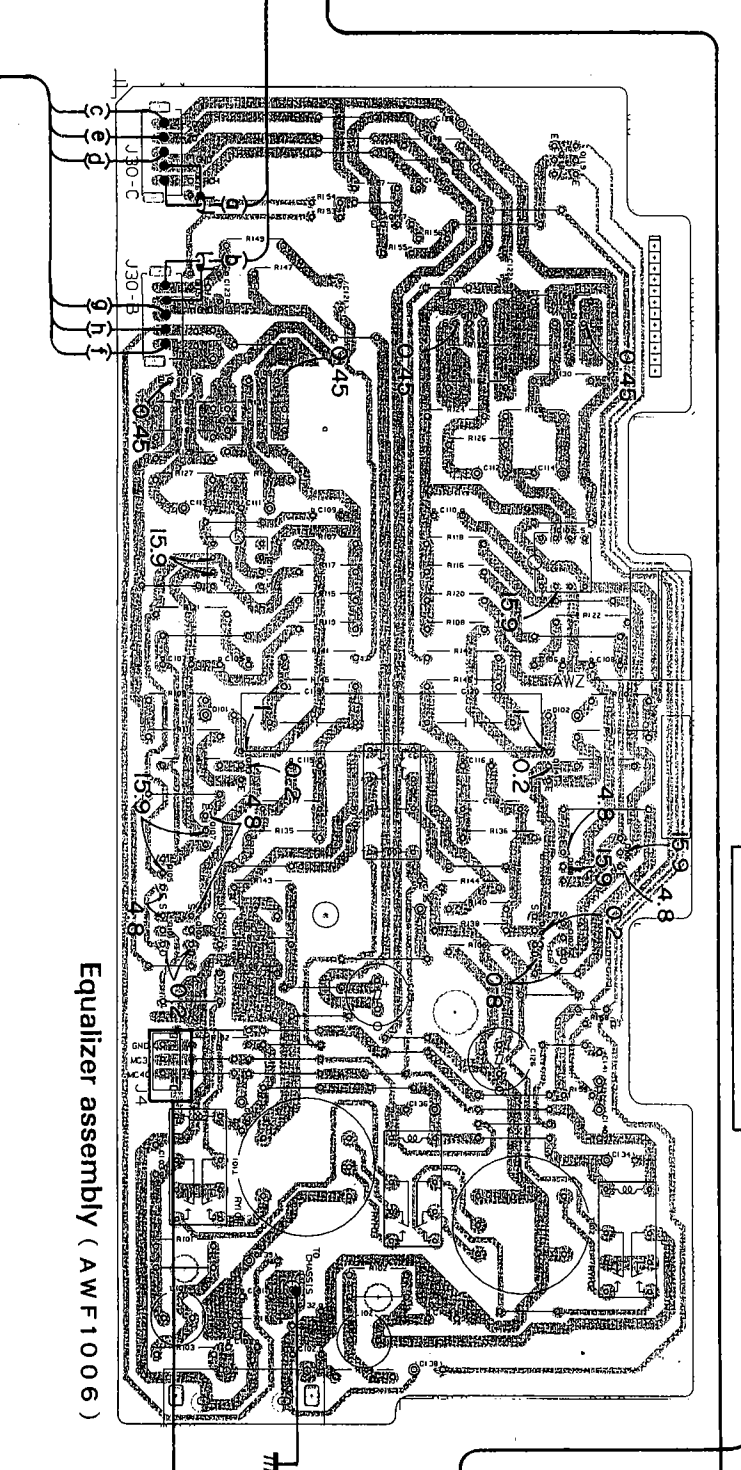
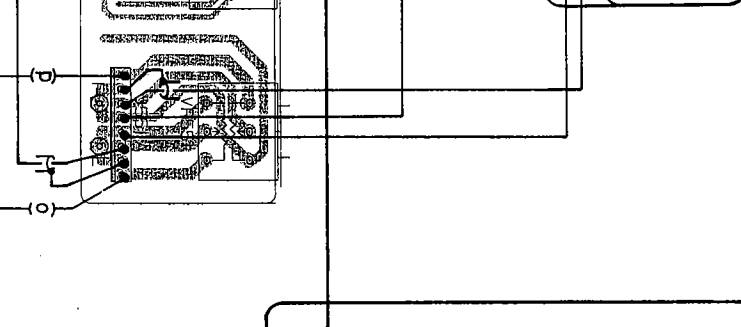
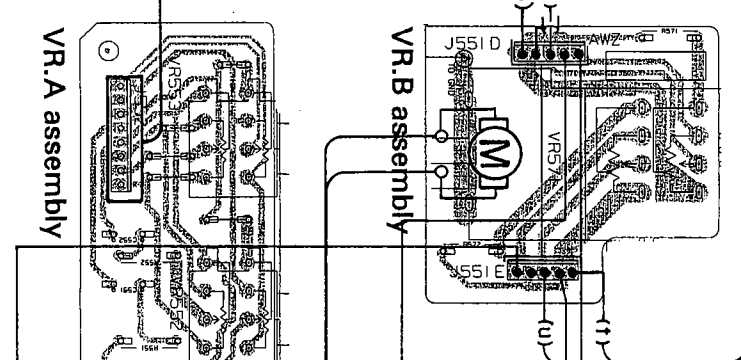
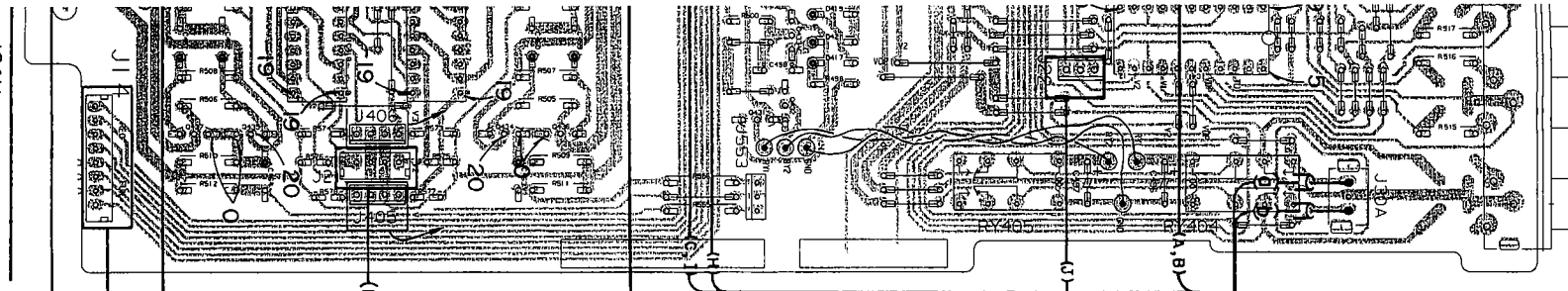
AF assembly (AWZ2078)

Control assembly (AWZ1055)

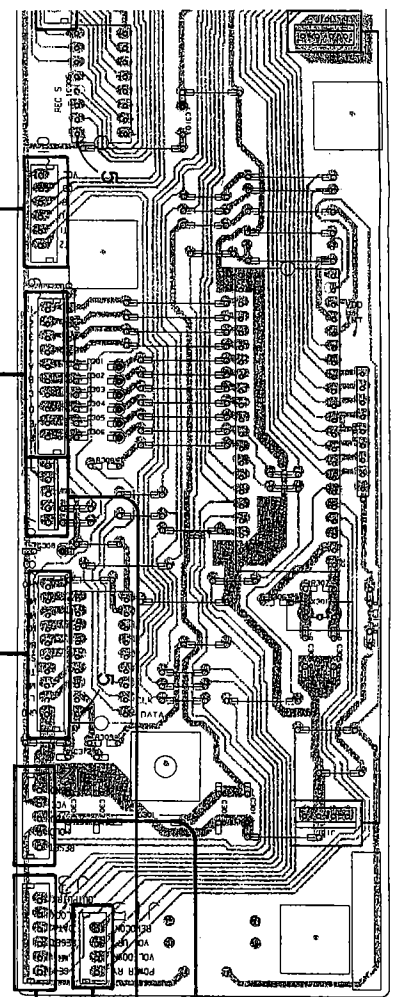


(A)(B)(C)(H)(I)

4 | 5 | 6 | 7 | 8 | 9 | 10

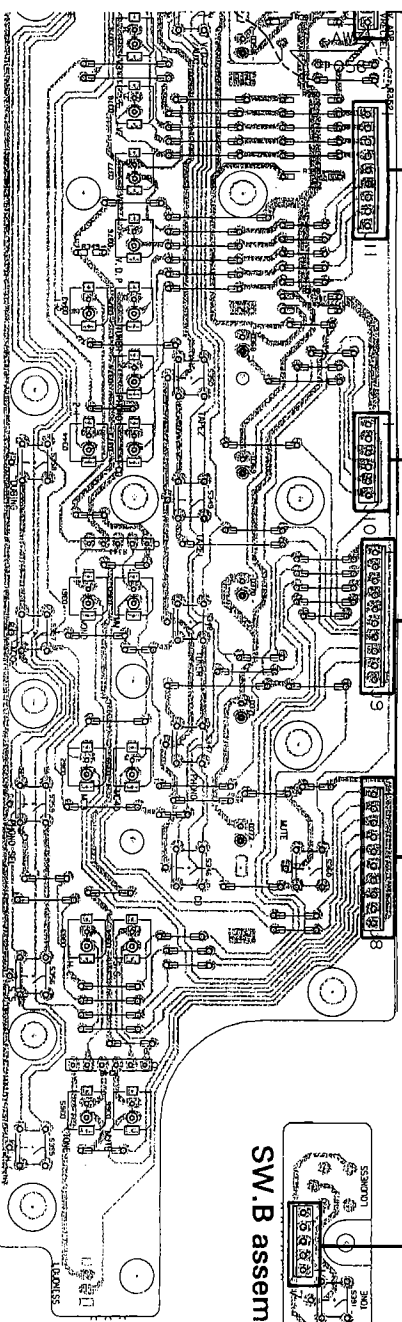


(A)H9XCH(X)1



Video assembly
(AWZ2046)

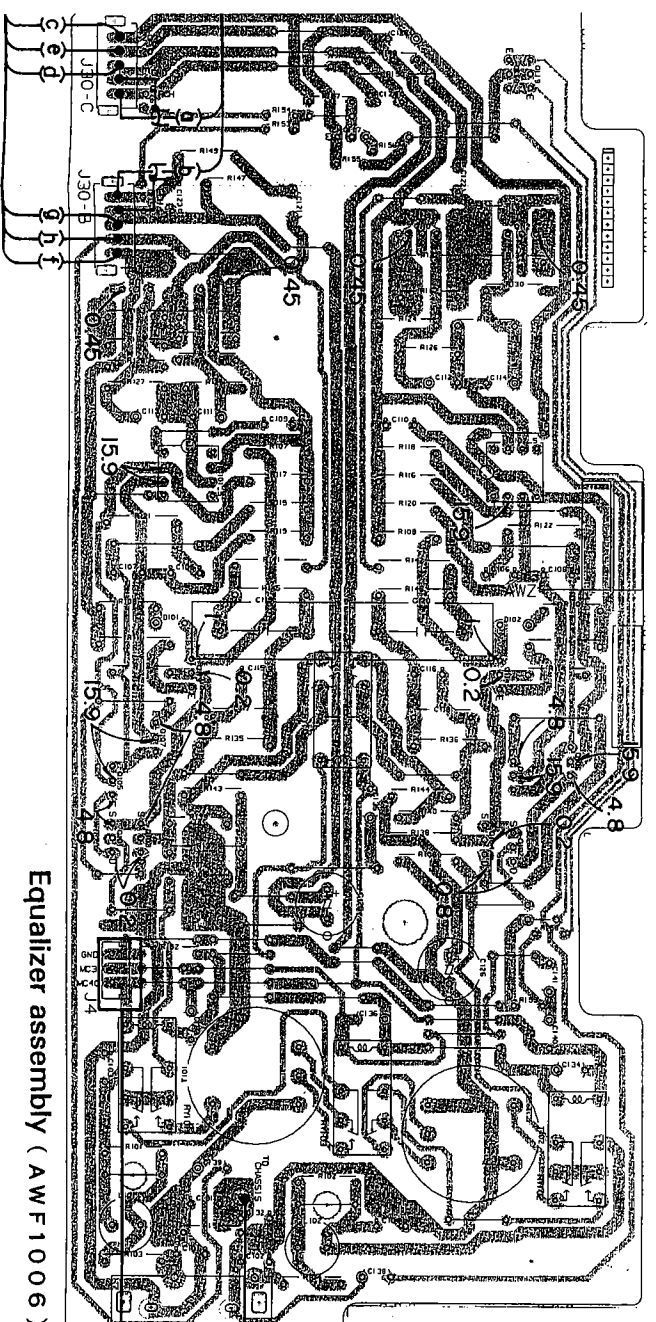
R2
560
ACN1010



REMOTE CONTROL
SENSOR Ass'y (AXX1003)

SW.A assembly
(AWZ1056)

SW.B assembly



Equalizer assembly (AWF1006)

0737 0736
0740 0738 0739
0742 0741 IC707
0743 0745 746

0721 722

0787 788

0723-725 0733 0732

IC701 0728 IC702

0731 0720 0735 0734 0719 0713 0729 730

0718 IC709 0717 0777

0761 763 IC703 0786

0771 0770 0777

0763 766 0773

IC704

0714-716

0711 712 0744 0701-704

0779 0736 0770 0755 0789 0771 772

IC706

0710 0709

0789 0784

0783 0781 0785 0783

0784 0780 0782

0789 0780

0784 0781

D C B A

D C B A

D C B A

D C B A

D C B A

D C B A

D C B A

D C B A

D C B A

D C B A

D C B A

D C B A

D C B A

D C B A

D C B A

D C B A

D C B A

D C B A

D C B A

D C B A

D C B A

D C B A

D C B A

D C B A

D C B A

D C B A

D C B A

D C B A

D C B A

D C B A

D C B A

D C B A

D C B A

D C B A

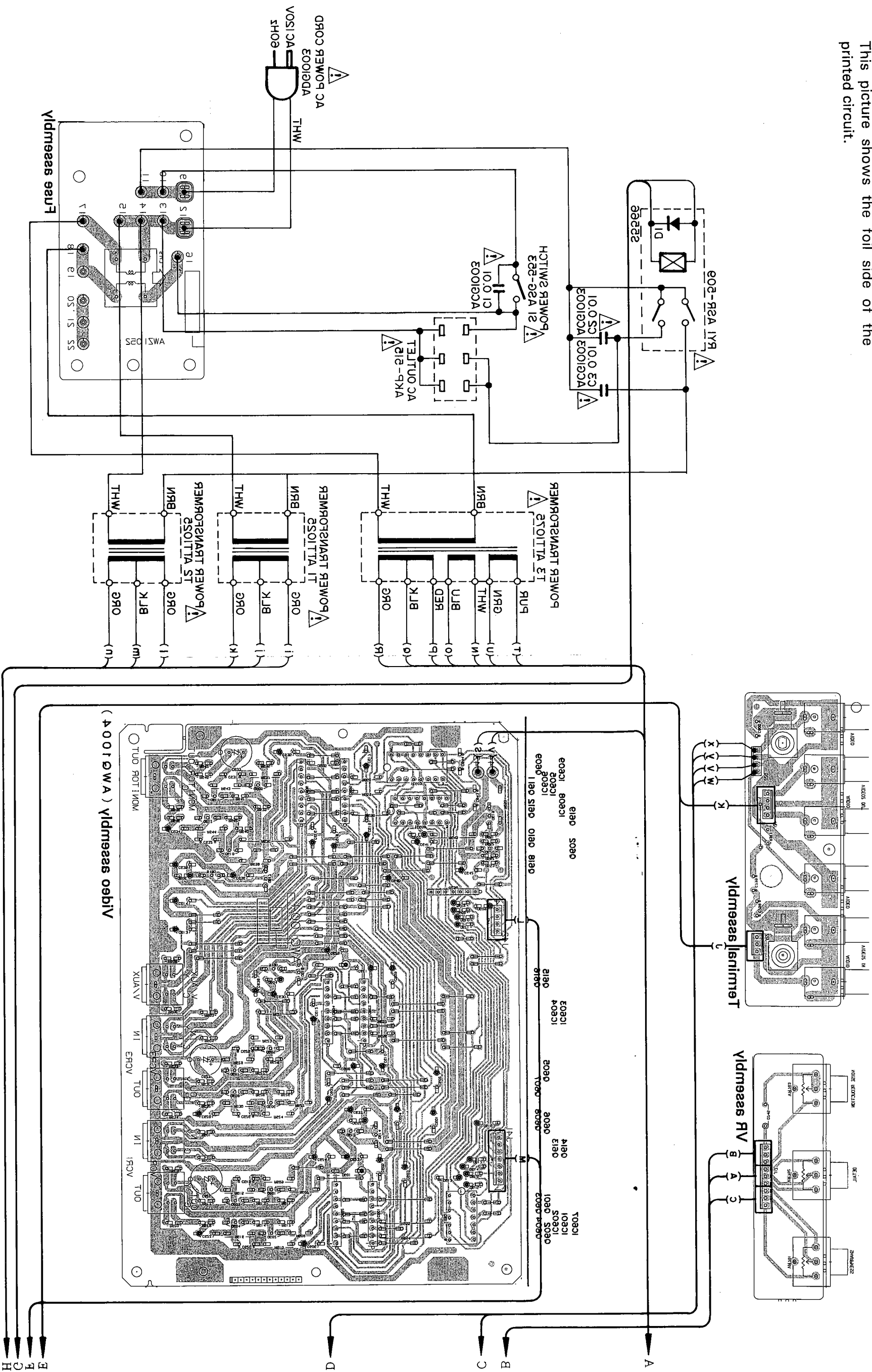
D C B A

D C B A

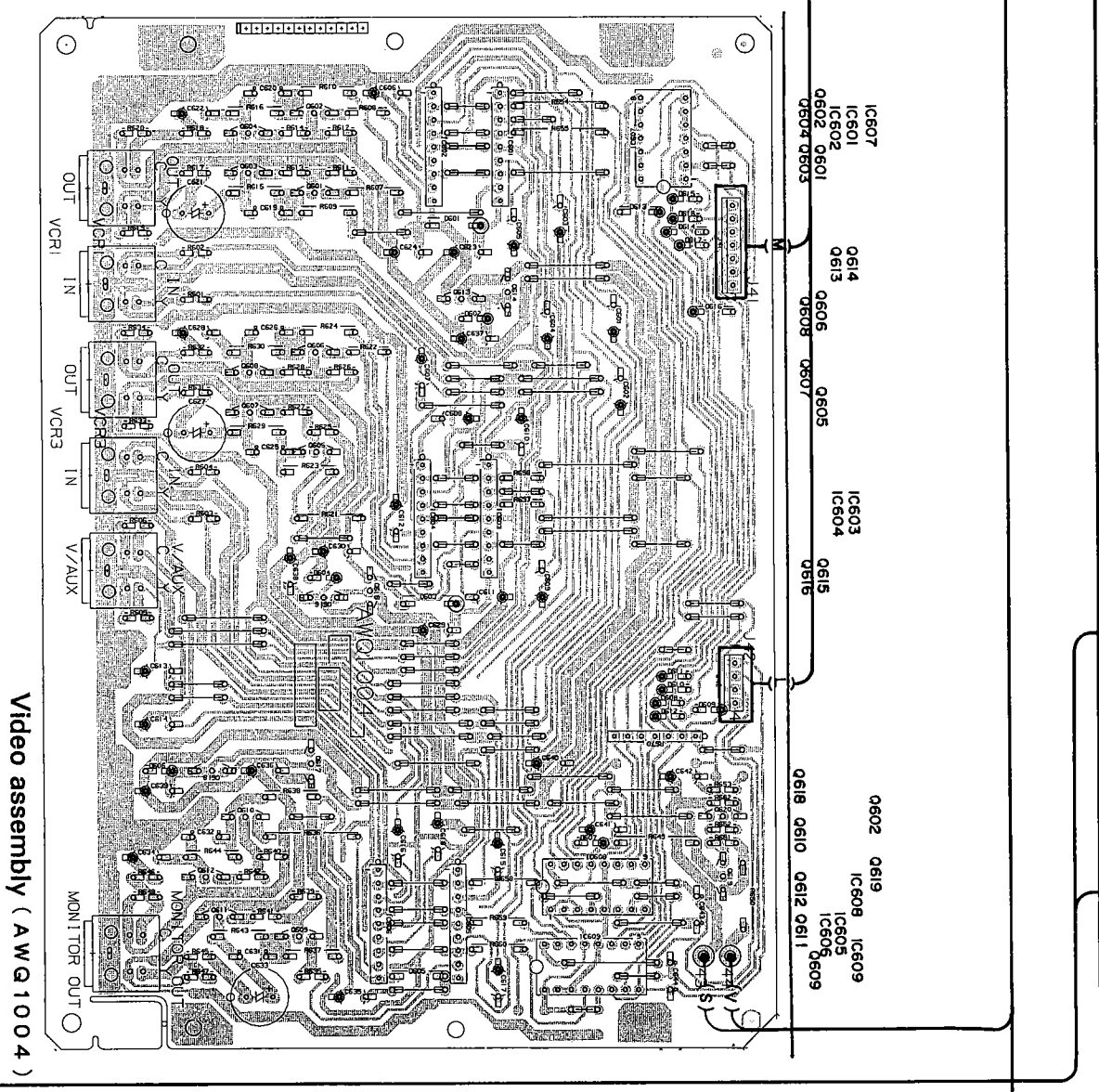
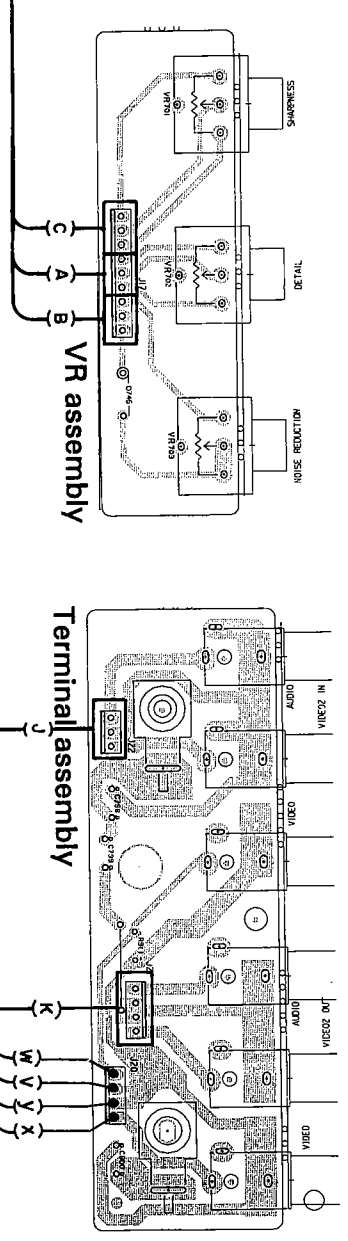
D C B A

D C B A

NOTE:
This picture shows the foil side of the
printed circuit.



1 2 3 4 5 6



NOTE

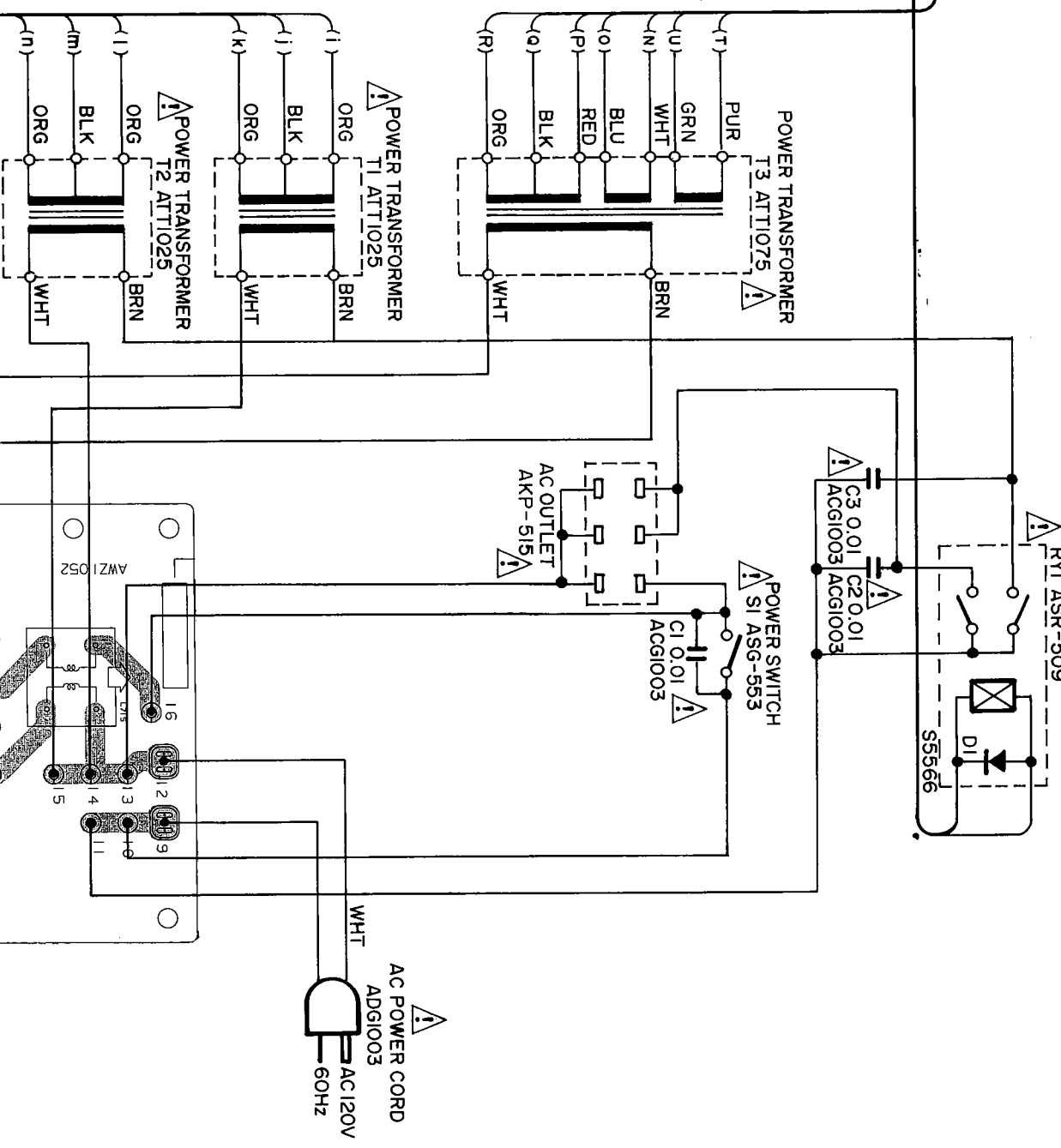
- The P.C.B. connection diagram is viewed from the parts mounted side.
- The parts which have been mounted on the board can be replaced with those shown with the corresponding wiring symbols listed in the following Table.

P.C.B. pattern diagram indication	Corresponding part symbol	Part Name
EO 0904	EO or ED	Transistor
0215	0215	Resistor type transistor
0203	0203	Diode
0237	0237	Relistor
CS13	CS13	Capacitor (polarity)
CS16	CS16	Capacitor (Non-polarity)

Others

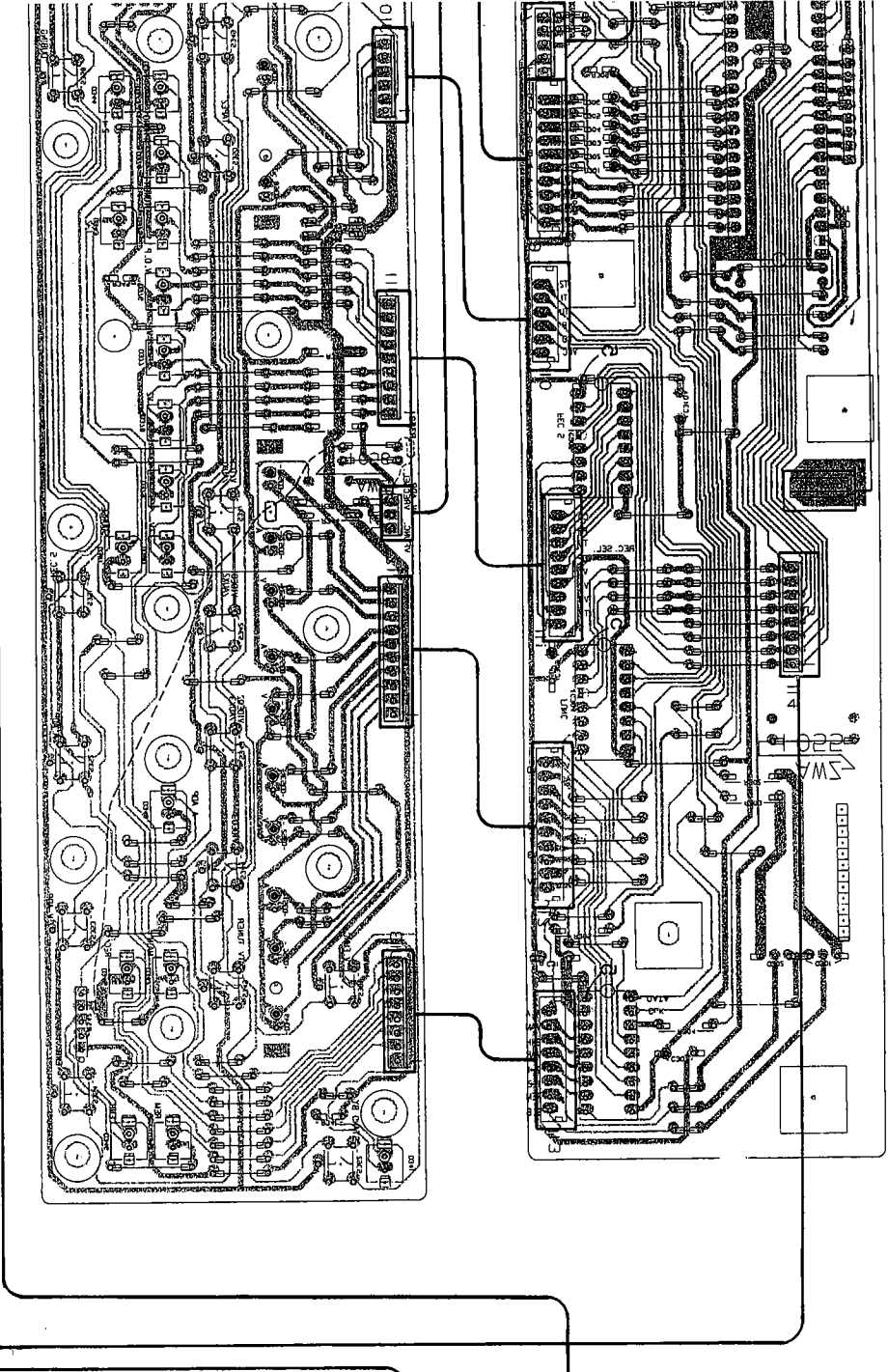
P.C.B. pattern diagram indication	Part Name
IC	IC
S	Switch
RV	Relay
L	Coil
F	Filter
VR	Variable reactor or Shunt'd reactor

- The capacitor marked with @ (double circles) shows negative terminal.
- The diode terminal marked with @ (double circles) shows cathode side.
- The transistor terminal to which E is wired shows the emitter.

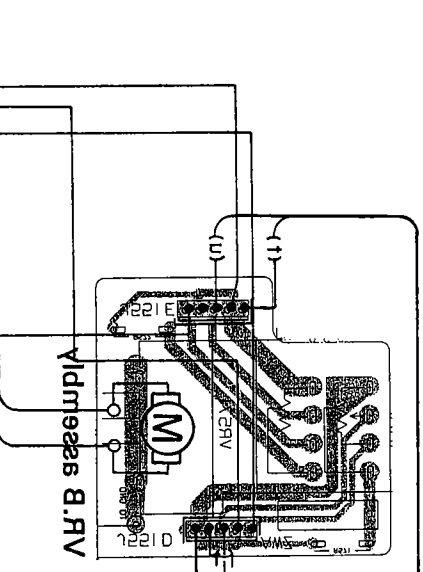
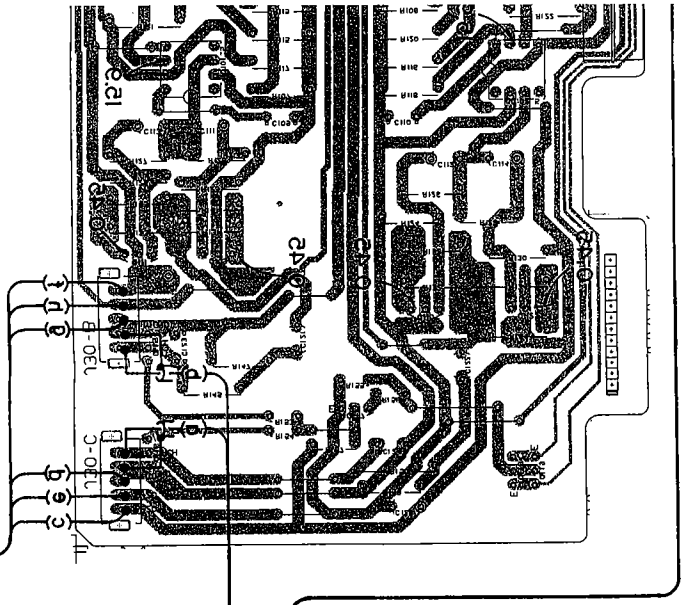
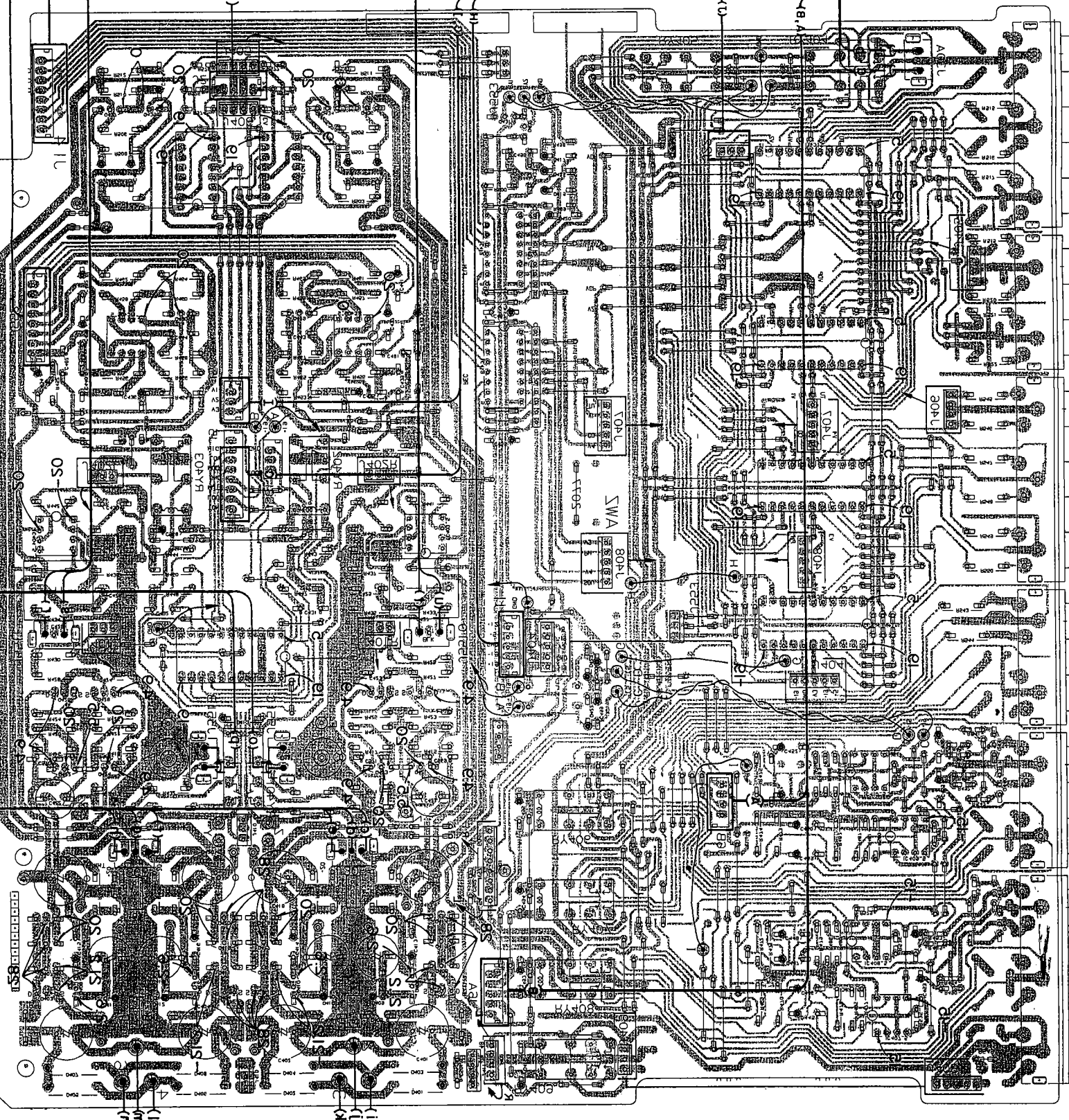


A B C D E F G H

(201 SWA) Vidmases Iontros



(8 TOS SWA) Vidmases JA



1120 CI
 1200 CI
 1300 CI
 1400 CI
 1500 CI
 1600 CI
 1700 CI
 1800 CI
 1900 CI
 2000 CI
 2100 CI
 2200 CI
 2300 CI
 2400 CI
 2500 CI
 2600 CI
 2700 CI
 2800 CI
 2900 CI
 3000 CI
 3100 CI
 3200 CI
 3300 CI
 3400 CI
 3500 CI
 3600 CI
 3700 CI
 3800 CI
 3900 CI
 4000 CI
 4100 CI
 4200 CI
 4300 CI
 4400 CI
 4500 CI
 4600 CI
 4700 CI
 4800 CI
 4900 CI
 5000 CI
 5100 CI
 5200 CI
 5300 CI
 5400 CI
 5500 CI
 5600 CI
 5700 CI
 5800 CI
 5900 CI
 6000 CI
 6100 CI
 6200 CI
 6300 CI
 6400 CI
 6500 CI
 6600 CI
 6700 CI
 6800 CI
 6900 CI
 7000 CI
 7100 CI
 7200 CI
 7300 CI
 7400 CI
 7500 CI
 7600 CI
 7700 CI
 7800 CI
 7900 CI
 8000 CI
 8100 CI
 8200 CI
 8300 CI
 8400 CI
 8500 CI
 8600 CI
 8700 CI
 8800 CI
 8900 CI
 9000 CI
 9100 CI
 9200 CI
 9300 CI
 9400 CI
 9500 CI
 9600 CI
 9700 CI
 9800 CI
 9900 CI
 10000 CI

7. PROGRAMMABLE REMOTE CONTROL UNIT (AXD1063)

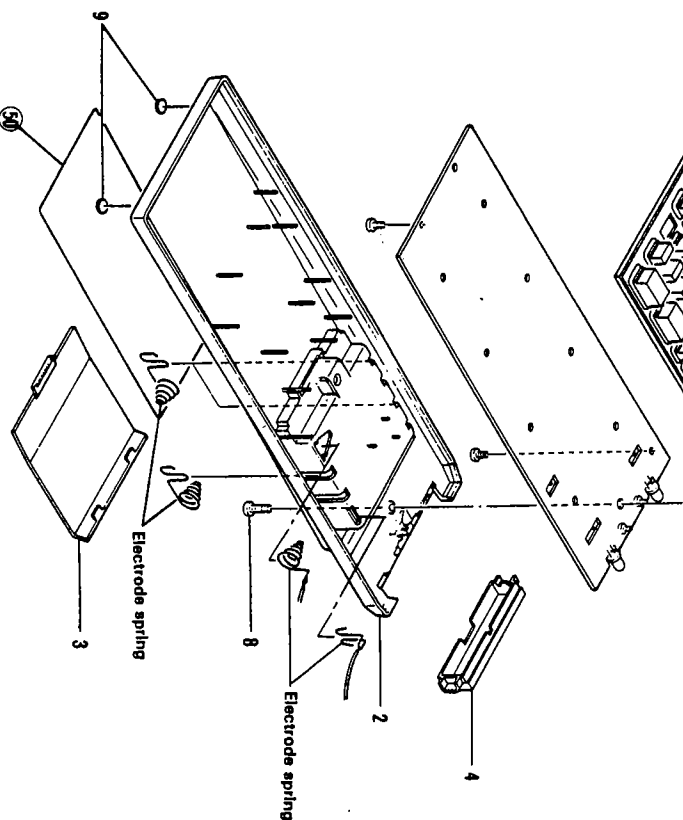
7.1 EXPLODED VIEWS AND PARTS LIST

- NOTES:
- Parts without part number cannot be supplied.
 - The Δ mark found on some component parts indicates the importance of the safety factor of the part. Therefore, when replacing, be sure to use parts of identical designation.
 - Parts marked by "●" are not always kept in stock. Their delivery time may be longer than usual or they may be unavailable.

PARTS LIST OF EXPLODED VIEWS

Mark	No.	Parts No.	Description
	1	AZH1033	Case (A)
	2	AZH1034	Case (B)
	3	AZH1035	Case (C)
	4	AZN1400	Filter
	5	AZA1086	Rubber switch
	6	AZS1042	Knob (AUDIO/VIDEO /AUX, USE/LEARN, DAT/TAPE)
	7	AZA1134	Name plate
	8	AZB1124	Screw
	9	AZN1401	Foot
	50		Rear name plate

※ When replacing the case No.2 (B) (AZH1034) by a new one, remove all electrode springs and install them into the new case (B).



7.2 ELECTRICAL PARTS LIST

- NOTES:
- Parts without part number cannot be supplied.
 - Parts marked by "●" are not always kept in stock. Their delivery time may be longer than usual or they may be unavailable.
 - The Δ mark found on some component parts indicates the importance of the safety factor of the part. Therefore, when replacing, be sure to use parts of identical designation.
 - When ordering resistors, first convert resistance values into code form as shown in the following examples.

Ex. 1 When there are 2 effective digits (any digit apart from 0), such as 560 ohm and 47k ohm (tolerance is shown by J = 5%, and K = 10%).

560 Ω 56×10^1 561..... RDI4PS \square \square \square J
 47k Ω 47×10^3 473..... RDI4PS \square \square \square J
 0.5 Ω 0R5..... RN2H \square \square \square K
 1 Ω 010..... RS1P \square \square \square K

Ex. 2 When there are 3 effective digits (such as in high precision metal film resistors).

5.62k Ω 562×10^1 5621..... RNI4SR \square \square \square F

SEMICONDUCTORS

Mark	Symbol & Description	Part No.
	IC01	PD5068-A
	IC02	AZC1045
	IC03	AZC1046
	IC04	AZC1047
	IC05	AZC1048

RESISTORS

Mark	Symbol & Description	Part No.
	R01 (8.2K)	AZC1064
	R02 (4.7K)	AZC1065
	R03, R08 (33K)	AZC1066
	R04 (220K)	AZC1067
	R05, R17, R39 (10K)	AZC1068
	R06 (82K)	AZC1069
	R07, R11, R30-R38 (100K)	AZC1073
	R09 (6.8K)	AZC1070
	R10 (56K)	AZC1071
	R12 (1M)	AZC1072
	R13, R16 (680 Ω)	AZC1075
	R14 (3.9 Ω)	AZC1078
	R15 (10 Ω)	AZC1076
	R18, R22-R29 (47K)	AZC1077
	R19-R21 (2.2K)	AZC1074

SWITCH

Mark	Symbol & Description	Part No.
	S01 Slide switch (AUDIO/VIDEO/AUX)	AZC1079
	S02, S03 Slide switch (USE/LEARN, DAT/TAPE)	AZC1080
	S04 Tact switch (RESET)	AZC1081

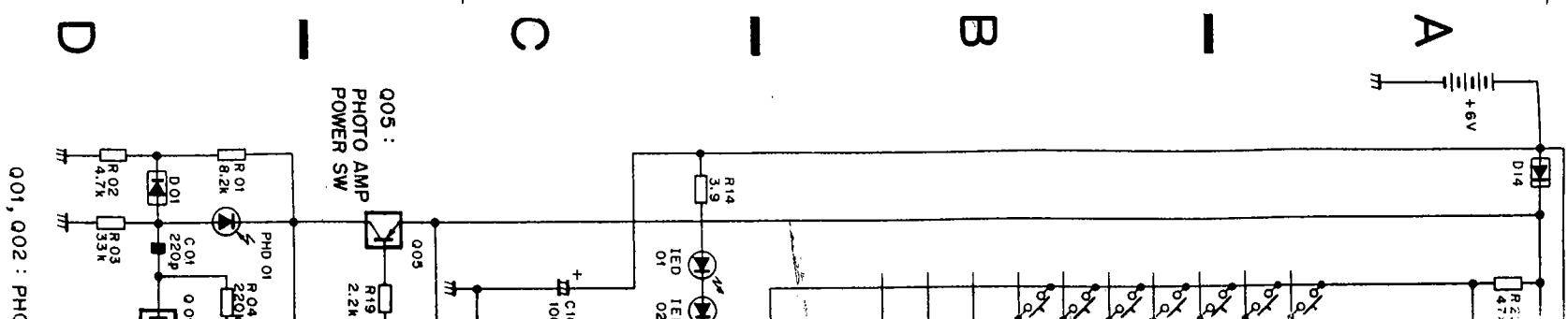
OTHERS

Mark	Symbol & Description	Part No.
	X1 Resonator (8MHz)	AZC1057

CAPACITORS

Mark	Symbol & Description	Part No.
	C01 (200P)	AZC1058
	C02 (33P)	AZC1059
	C03, C04 (0.001 μ F)	AZC1062
	C05, C06 (20P)	AZC1060
	C07 Electrolytic capacitor (4.7/6V)	CEAS4R7M6
	C08 (0.01)	AZC1061
	C09 Electrolytic capacitor (100 /6V)	CEAS101M6
	C10 Electrolytic capacitor (100/6V)	CEAS101M6
	C11 (0.01)	AZC1063

7.3 SCHEMATIC



XD1063)

7.2 ELECTRICAL PARTS LIST

NOTES:

- Parts without part number cannot be supplied.
- Parts marked by "⊗" are not always kept in stock. Their delivery time may be longer than usual or they may be unavailable.
- The Δ mark found on some component parts indicates the importance of the safety factor of the part. Therefore, when replacing, be sure to use parts of identical designation.
- When ordering resistors, first convert resistance values into code form as shown in the following examples.
- Ex. 1 When there are 2 effective digits (any digit apart from 0), such as 560 ohm and 47k ohm (tolerance is shown by J = 5%, and K = 10%):
560Ω 56 X 10¹ RDI4PS ⊗ ⊗ ⊗ J
47kΩ 47 X 10³ RDI4PS ⊗ ⊗ ⊗ J
0.5Ω 0R5 RNZH ⊗ ⊗ ⊗ K
1Ω 010 RSIP ⊗ ⊗ ⊗ K
- Ex. 2 When there are 3 effective digits (such as in high precision metal film resistors):
5.62kΩ 562 X 10¹ RN14SR ⊗ ⊗ ⊗ F

NS

time may be longer

SEMICONDUCTORS

Mark	Symbol & Description	Part No.
	IC01	PD5068-A
	IC02	AZC1045
	IC03	AZC1046
	IC04	AZC1047
	IC05	AZC1048

	001, 002	AZC1050
	003, 004	AZC1051
	005	AZC1052
	D01, D02, D07-D14	AZC1056
	D03-D06	AZC1049
	PHD01	AZC1055
	LED01, LED02	AZC1054
	LED01, LED02	AZC1053

SWITCH

Mark	Symbol & Description	Part No.
	S01	AZC1079
	S02, S03	AZC1080
	S04	AZC1081

CAPACITORS

Mark	Symbol & Description	Part No.
	C01	AZC1058
	C02	AZC1059
	C03, C04	AZC1062
	C05, C06	AZC1080
	C07	CEAS4R7M6
	C08	AZC1061
	C09	CEAS101M6
	C10	CEAS101M6
	C11	AZC1063

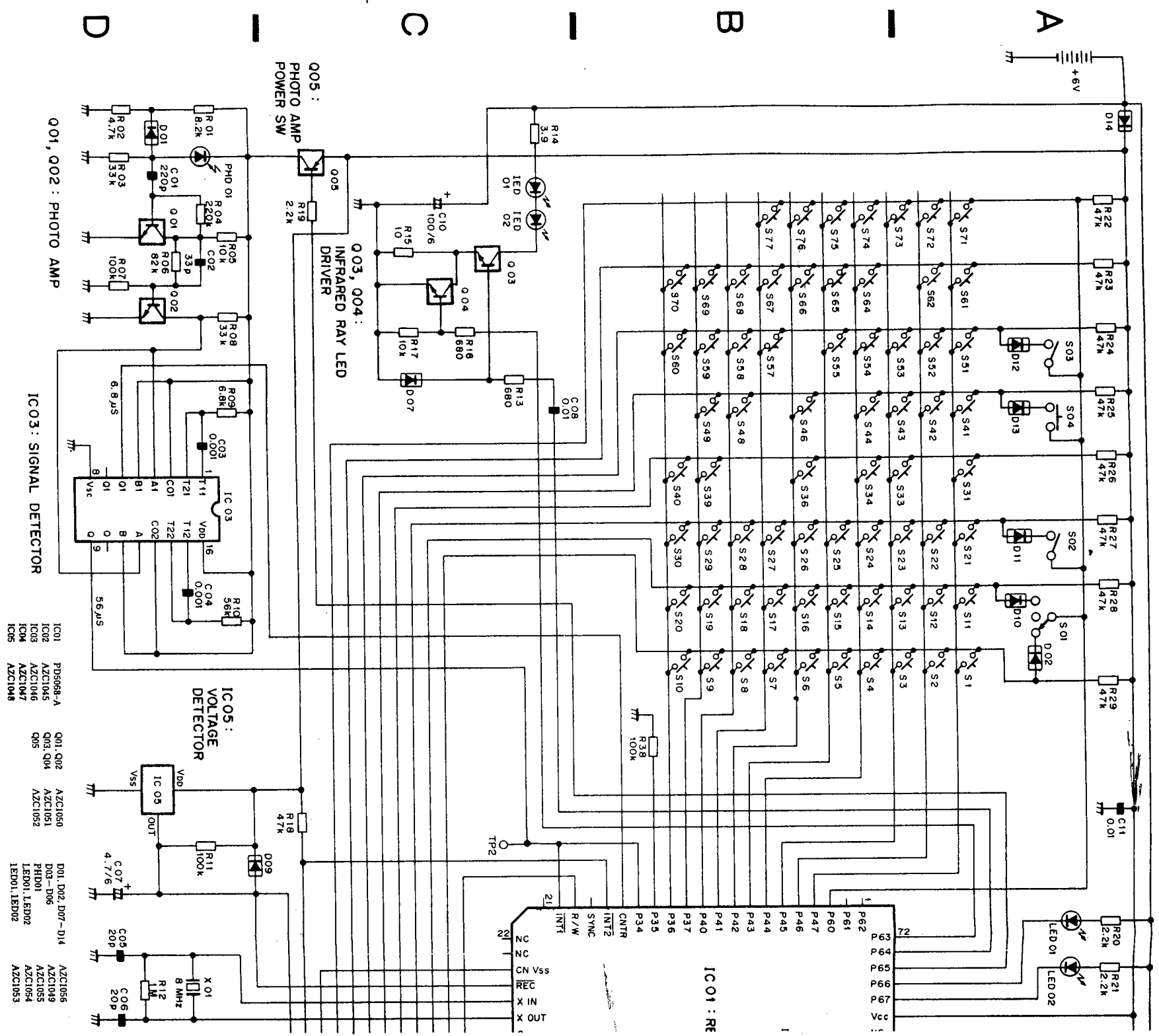
RESISTORS

Mark	Symbol & Description	Part No.
	R01	AZC1064
	R02	AZC1065
	R03, R08	AZC1066
	R04	AZC1067
	R05, R17, R39	AZC1068
	R06	AZC1069
	R07, R11, R30-R38	AZC1073
	R09	AZC1070
	R10	AZC1071
	R12	AZC1072
	R13, R16	AZC1075
	R14	AZC1078
	R15	AZC1076
	R18, R22-R29	AZC1077
	R19-R21	AZC1074

OTHERS

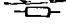


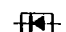
Mark	Symbol & Description	Part No.
	X1 Resonator (8MHz)	AZC1057

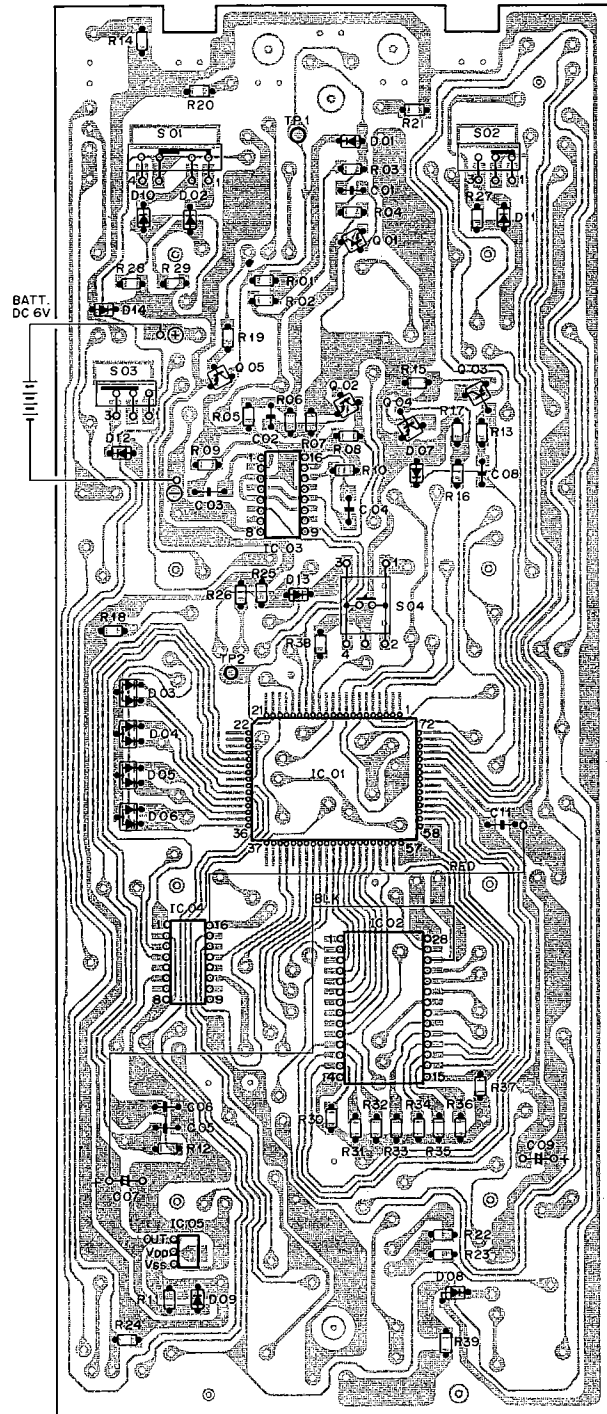
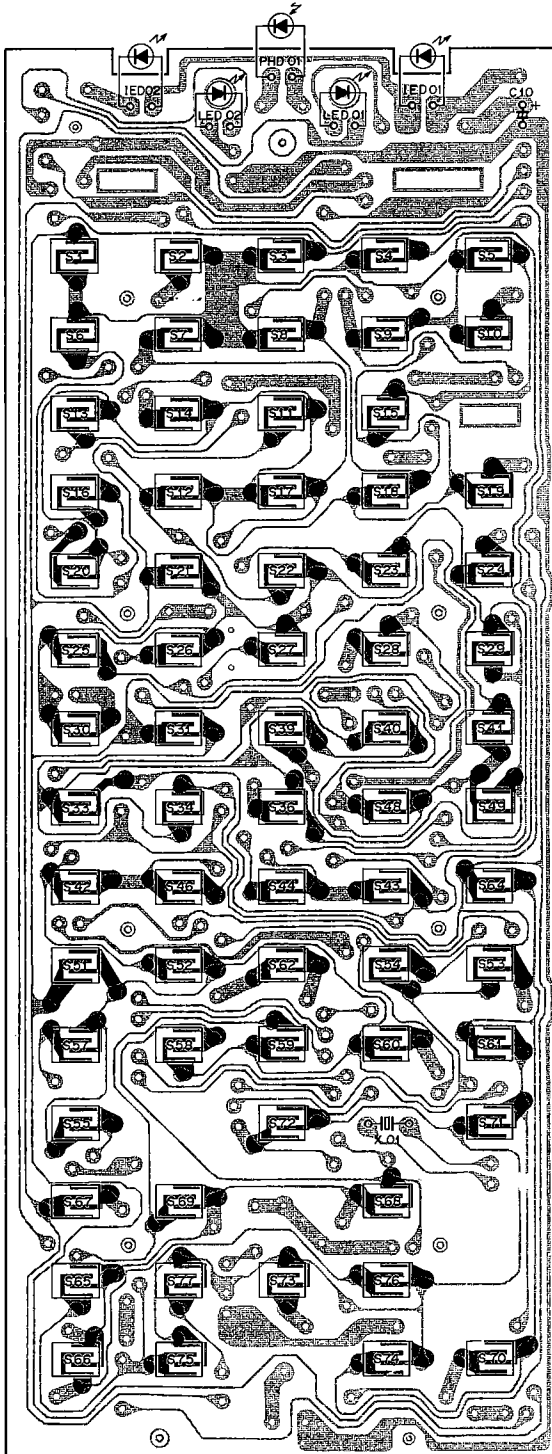
7.3 SCHEMATIC DIAGRAM



7.4 P.C.BOARD PATTERNS

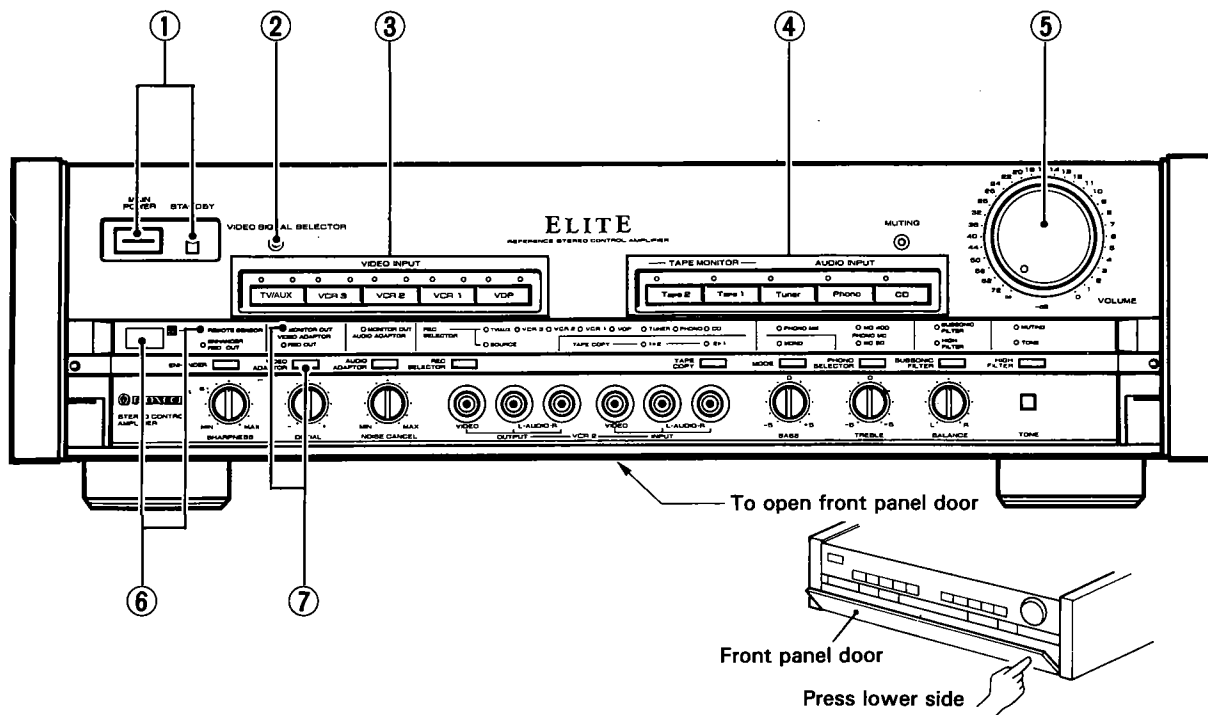
NOTE:

-  : Indicates a chip resistor.
-  : Indicates a chip capacitor.
-  : Indicates a chip transistor.
-  : Indicates a chip diode.



8. PANEL FACILITIES

FRONT PANEL



① MAIN POWER switch

STANDBY switch/indicator

- When the power switch is in the ON position, power can be turned ON/OFF to the amplifier and to the rear panel REMOTE CONTROL power outlets.
- Power is turned ON/OFF alternately with each press of the switch; when in the OFF (stand-by) position, the indicator will light (when in the ON position, the indicator will flash, then go out).
- The accessory remote control unit can be used to turn this switch ON/OFF, with the result that the remote control unit can be used from the listening position to control power not only to the amplifier, but also to those components connected to the rear panel REMOTE CONTROL power outlets.
- When not using the amplifier for an extended period of time, be sure to set the main power switch to the OFF position.

② VIDEO SIGNAL SELECTOR switch

Use to switch the video component's video signal regardless of the position of the input selector switch. The video indicators (green) above the input selector switch will light in order.

Even when listening to an audio component (record player, tuner, etc.), this switch can be used to perform video recording and playback while continuing to listen to the audio component playback.

③ VIDEO INPUT selector switches/indicators

Use to select the video component for playback.

- [VDP] — To play back the video disc player connected to the rear panel VDP terminals.
- [VCR1] — To play back the VCR connected to the rear panel VCR1 terminals.
- [VCR2] — To play back the VCR connected to the front panel VCR2 terminals.

[VCR3] — To play back the VCR connected to the rear panel VCR3 terminals.

[TV/AUX] — To use the TV tuner or video equipment connected to the rear panel TV/AUX terminals.

The red indication light during audio playback, while the green indicators light during video playback.

This switch is interlocked with the AUDIO INPUT selector.

④ AUDIO INPUT selector switches/indicators

Use to select the audio component for playback (the indicator will light).

[CD]: For compact disc player.

[Phono]: For turntable.

[Tuner]: For listening to FM/AM broadcasts with a tuner.

[Tape 1]: To use the tape deck connected to the rear panel Tape 1 terminals.

[Tape 2]: To use the tape deck connected to the rear panel Tape 2 terminals.

The Tape 1 and 2 switches go ON or OFF alternately each time they are pressed, independently of the other switches.

⑤ VOLUME control

Use to adjust the sound volume. At the [∞] position, sound will not be heard, while at the [0] position, sound volume will be at its maximum.

⑥ REMOTE SENSOR/indicators

⑦ VIDEO ADAPTOR switch/indicator

Set to the ON position when using the component connected to the rear panel ADAPTOR terminals VIDEO IN and OUT.